

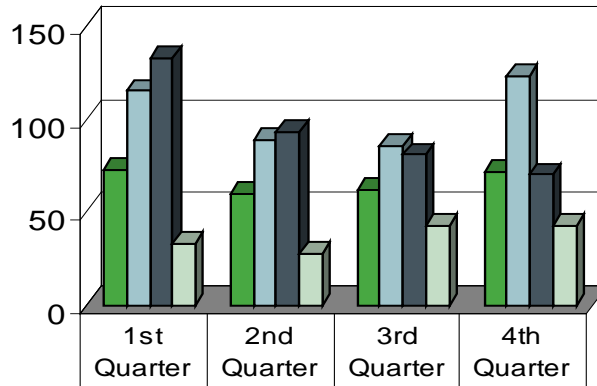
AN OVERVIEW OF OWCA SECTION'S ACTIVITY- 2012

The OWCA's fourth quarter activity report for 2012 is now available for customers to access.

1. Consultation Unit Report
2. Safety and Health Unit Report
3. Fraud Claims Unit Report
4. Hearing Unit Report
5. Second Injury Fund Unit Report

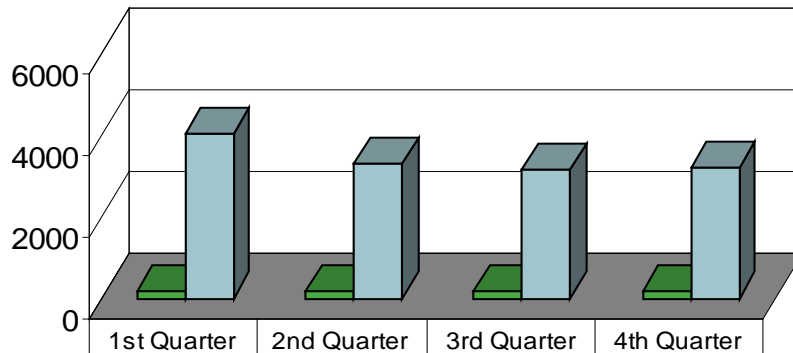
If you have questions about the information contained in this report, please contact dvaughan@lwc.la.gov.

Consultation Unit Report-2012



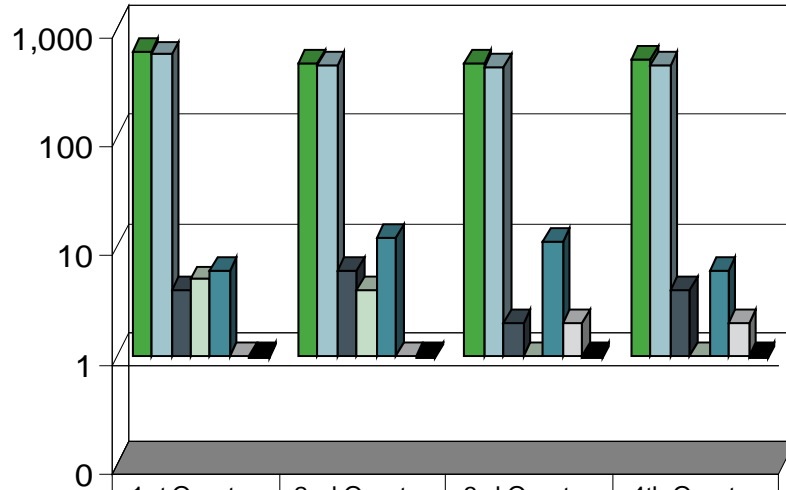
| | 1st Quarter | 2nd Quarter | 3rd Quarter | 4th Quarter |
|--|-------------|-------------|-------------|-------------|
| Requests received for services * | 73 | 60 | 62 | 72 |
| Onsite visits conducted * | 115 | 89 | 86 | 123 |
| Consultation inquiries ** | 133 | 93 | 81 | 70 |
| Average number of days from initial visit to case closed *** | 33 | 28 | 43 | 43 |

Safety and Health Unit Report-2012



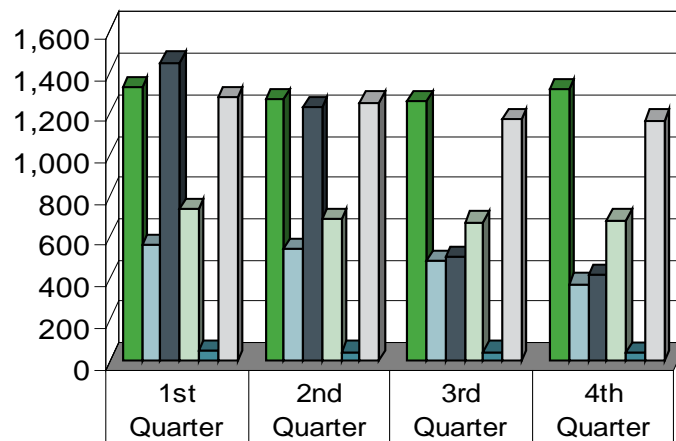
| | 1st Quarter | 2nd Quarter | 3rd Quarter | 4th Quarter |
|-------------------------------|-------------|-------------|-------------|-------------|
| Onsite visits and inspections | 157 | 157 | 157 | 156 |
| Clients assisted | 4,048 | 3,316 | 3,183 | 3,224 |

Fraud Claims Unit Report-2012



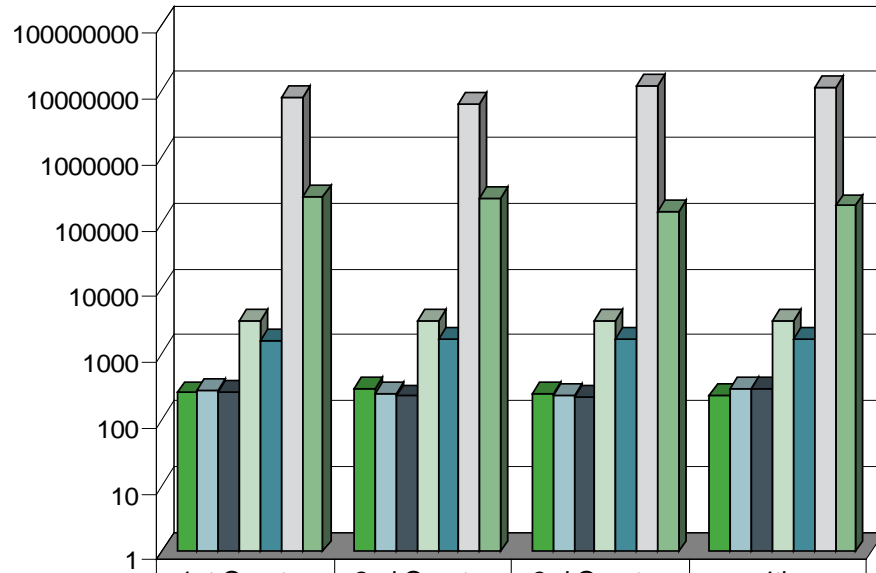
| | 1st Quarter | 2nd Quarter | 3rd Quarter | 4th Quarter |
|--|-------------|-------------|-------------|-------------|
| ■ Investigations initiated | 601 | 474 | 471 | 510 |
| ■ Investigations completed | 576 | 457 | 437 | 458 |
| ■ Referrals for prosecution | 4 | 6 | 2 | 4 |
| ■ Arrests/prosecutions | 5 | 4 | 0 | 1 |
| ■ Referrals for U. I. Fraud | 6 | 12 | 11 | 6 |
| □ Conviction | 1 | 0 | 2 | 2 |
| ■ % of investigations completed within 30 days | 95% | 96% | 93% | 93% |

Hearing Unit Report-2012



| | 1st Quarter | 2nd Quarter | 3rd Quarter | 4th Quarter |
|--------------------------------------|-------------|-------------|-------------|-------------|
| ■ Disputed claims filed | 1,327 | 1,271 | 1,262 | 1,318 |
| ■ Mediations held | 562 | 545 | 486 | 375 |
| ■ Disputes resolved before pre-trial | 1,447 | 1,228 | 503 | 419 |
| ■ Trials held | 740 | 688 | 675 | 684 |
| ■ Appeals filed | 53 | 45 | 46 | 43 |
| □ Approved settlements* | 1,279 | 1,253 | 1,173 | 1,167 |

Second Injury Fund Unit Report-2012



| | 1st Quarter | 2nd Quarter | 3rd Quarter | 4th |
|---|-------------|-------------|--------------|--------------|
| ■ Claims received | 261 | 294 | 256 | 238 |
| ■ Claims closed | 289 | 253 | 243 | 301 |
| ■ Decisions rendered | 267 | 233 | 221 | 301 |
| ■ Claims pending | 3,238 | 3,298 | 3,267 | 3,257 |
| ■ Claims with ongoing reimbursements | 1,633 | 1,672 | 1,720 | 1,719 |
| ■ Total amount reimbursed to carriers and self-insurers | \$8,048,597 | \$6,287,928 | \$12,244,478 | \$11,174,532 |
| ■ Total administrative costs | \$253,773 | \$234,128 | \$146,936 | \$181,558 |