

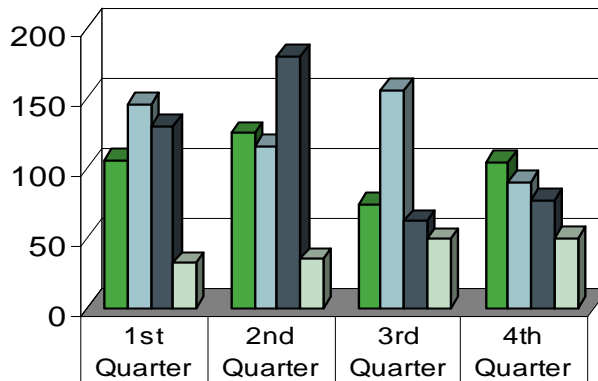
AN OVERVIEW OF OWCA SECTION'S ACTIVITY- 2011

The OWCA's fourth quarter activity report for 2011 is now available for customers to access.

1. Consultation Unit Report
2. Safety and Health Unit Report
3. Fraud Claims Unit Report
4. Hearing Unit Report
5. Second Injury Fund Unit Report

If you have questions about the information contained in this report, please contact dvaughan@lwc.la.gov.

Consultation Unit Report-2011



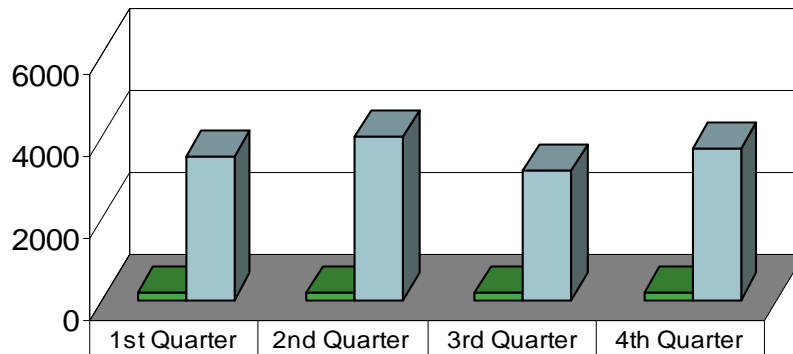
■ Requests received for services *	106	125	74	104
■ Onsite visits conducted *	146	116	156	90
■ Consultation inquiries **	130	180	62	77
■ Average number of days from initial visit to case closed ***	32	35	49	50

* 1st, 2nd and 3rd quarters have been amended

** 1st quarter has been amended

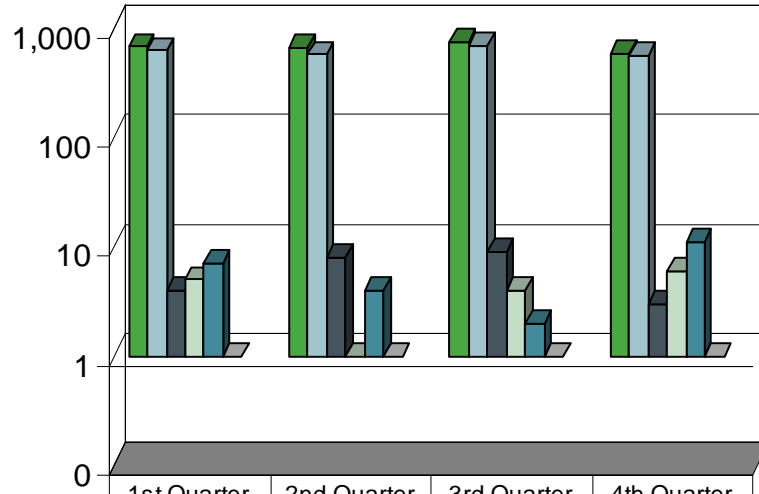
*** 2nd quarter has been amended

Safety and Health Unit Report-2011



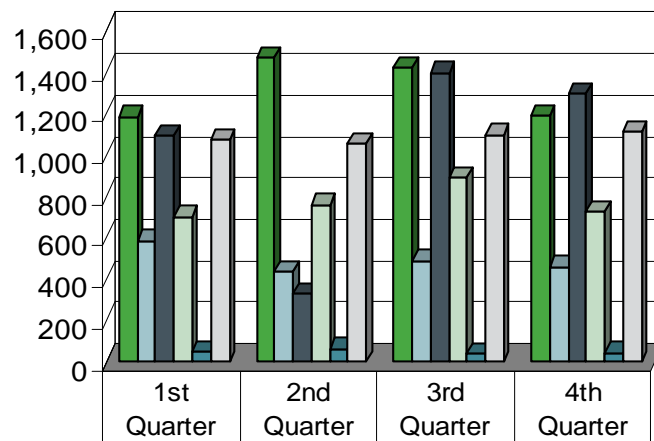
■ Onsite visits and inspections	156	156	155	156
■ Clients assisted	3,510	4,026	3,161	3,728

Fraud Claims Unit Report-2011



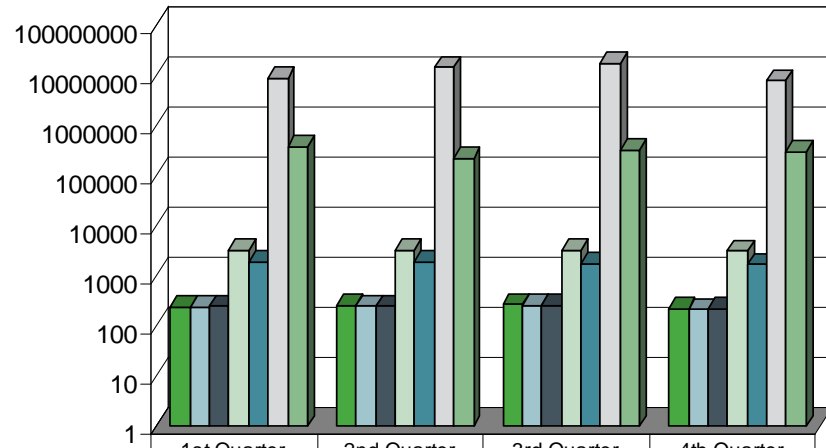
	1st Quarter	2nd Quarter	3rd Quarter	4th Quarter
■ Investigations initiated	674	657	742	587
■ Investigations completed	623	575	694	563
■ Referrals for prosecution	4	8	9	3
■ Arrests/prosecutions	5	1	4	6
■ Referrals for U. I. Fraud	7	4	2	11
■ Conviction	0	0	0	1
% of investigations completed within 30 days	92%	88%	94%	96%

Hearing Unit Report-2011



	1st Quarter	2nd Quarter	3rd Quarter	4th Quarter
■ Disputed claims filed	1,186	1,471	1,422	1,191
■ Mediations held	586	440	492	462
■ Disputes resolved before pre-trial	1,095	330	1,400	1,297
■ Trials held	703	760	890	728
■ Appeals filed	51	65	44	45
■ Approved settlements*	1,073	1,058	1,101	1,114

Second Injury Fund Unit Report-2011



	1st Quarter	2nd Quarter	3rd Quarter	4th Quarter
■ Claims received	238	255	273	219
■ Claims closed	242	247	255	211
■ Decisions rendered	251	247	258	221
□ Claims pending	3,322	3,304	3,302	3,189
■ Claims with ongoing reimbursements	1,899	1,906	1,807	1,710
□ Total amount reimbursed to carriers and self-insurers	\$9,004,864	\$14,552,239	\$18,035,962	\$8,012,505
■ Total administrative costs	\$391,488	\$227,062	\$325,034	\$307,047