

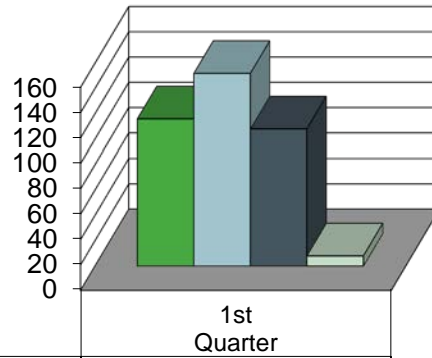
AN OVERVIEW OF OWCA SECTION'S ACTIVITY- 2016

The OWCA's first quarter activity report for 2016 is now available for customers to access.

1. OSHA Consultation Unit Report
2. Safety and Health Unit Report
3. Fraud Claims Unit Report
4. Hearing Unit Report
5. Second Injury Fund Unit Report

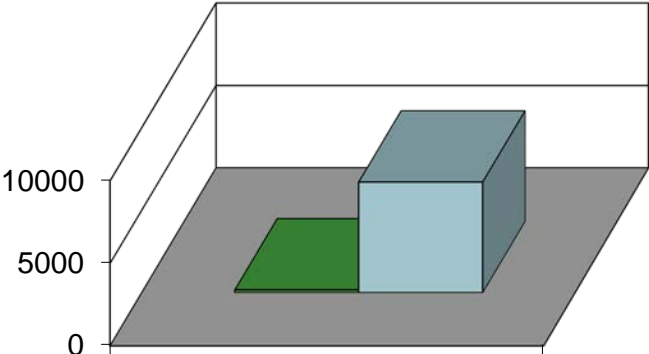
If you have questions about the information contained in this report, please contact cdesselles@lwc.la.gov.

Consultation Unit Report-2016



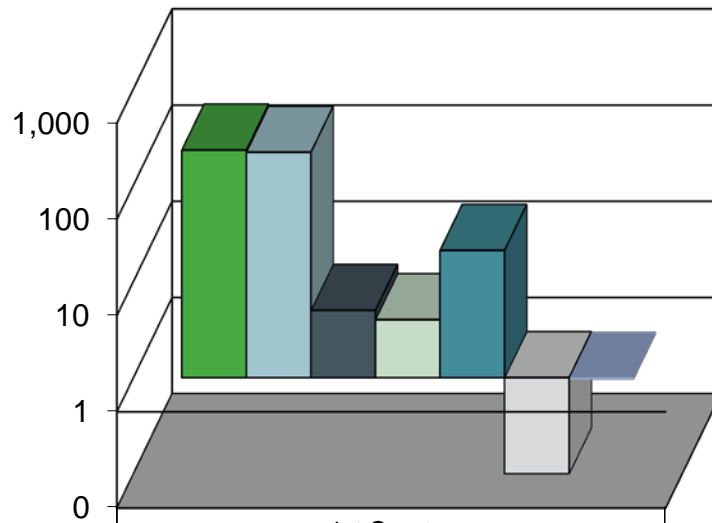
■ Requests received for services *	116
■ Onsite visits conducted *	152
■ Consultation inquiries **	108
■ Average number of days from initial visit to case closed ***	8

Safety and Health Unit Report-2016



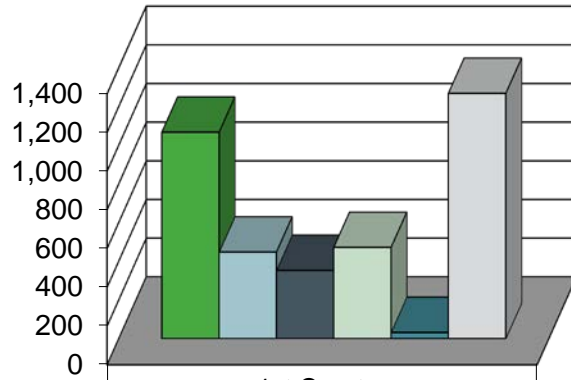
	1st Quarter
■ Onsite visits and inspections	158
■ Clients assisted	6,695

Fraud Claims Unit Report-2016



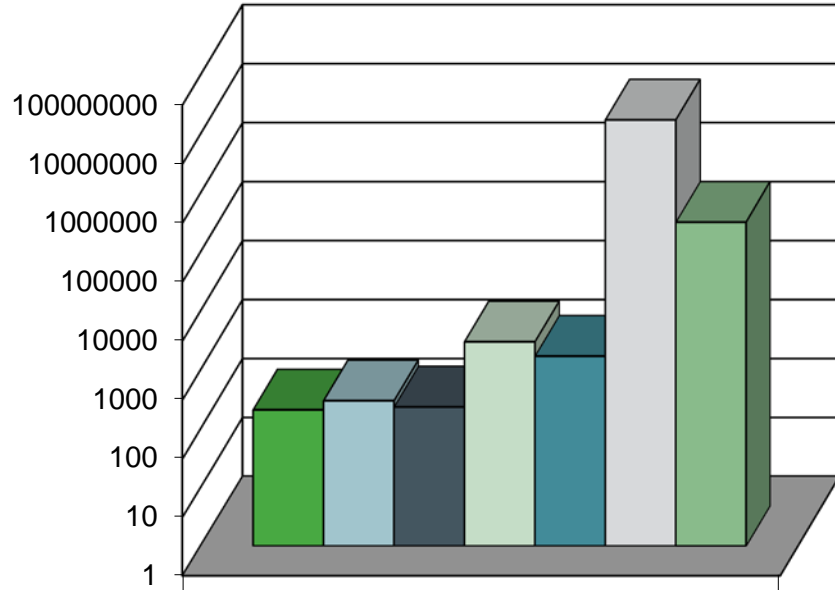
	1st Quarter
■ Investigations initiated	232
■ Investigations completed	220
■ Referrals for prosecution	5
■ Arrests/prosecutions	4
■ Referrals for U. I. Fraud	21
■ Conviction	0
■ % of investigations completed within 30 days	95%

Hearing Unit Report-2016



■ Disputed claims filed	1,066
■ Mediations held	446
■ Disputes resolved before pre-trial	351
■ Trials held	470
■ Appeals filed	31
■ Approved settlements*	1,267

Second Injury Fund Unit Report-2016



1st Quarter

■ Claims received	212
■ Claims closed	303
■ Decisions rendered	238
■ Claims pending	3,018
■ Claims with ongoing reimbursements	1,728
■ Total amount reimbursed to carriers and self-insurers	\$17,514,692
■ Total administrative costs	\$322,131