

OWCA

2011
ANNUAL
REPORT



The Louisiana Workforce Commission (LWC), Office of Workers' Compensation Administration (OWCA), respectfully submits its 2011 Annual Report. This report, past annual reports and other OWCA information can be found on the LWC Website www.laworks.net. In accordance with the Executive Order BJ-08-08, the OWCA will disseminate this Annual Report via electronic means whenever possible. However, 75 hard copies of the 2011 Annual Report have been published, at a cost \$86.74. LA. R.S 43.31 requires copies to be made available upon request or to individuals without the ability to receive this information in an electronic format. This document was published by the Louisiana Workforce Commission and OWCA, Post Office Box 94040, Baton Rouge, Louisiana 70804-9040.

The material in this publication is in the public domain and may be reproduced without permission if the State of Louisiana, Office of Workers' Compensation Administration is cited as the source.

TABLE OF CONTENTS

TABLE OF CONTENTS.....	i
EXECUTIVE SUMMARY	1
INTRODUCTION	3
OFFICE OF WORKERS' COMPENSATION FUNDING AND EXPENDITURES	4
STRUCTURE OF THE WORKERS' COMPENSATION ADMINISTRATION OFFICE	5
ADMINISTRATION	6
Administrative Section.....	6
Finance and Compliance Section.....	6
Fraud Section	6
Hearings Section	6
Legal Section	7
Records Management Section.....	7
Second Injury Board	7
Workplace Safety Section.....	8
Workers' Compensation Advisory Council.....	9
Workers' Compensation Medical Advisory Council.....	9
OWCA SECTION ACTIVITIES, 2007 – 2011	10
Workers' Compensation Claims	11
Hearings	11
Number of Disputed Claims Received by OWCA Offices	11
Number of Mediation Conferences Held by OWCA Offices.....	11
Number of Trials Held by OWCA Offices	11
Number of Decisions Rendered by OWCA Offices	11
Number of Appeals Filed by OWCA Offices.....	11
Number of Settlements Approved by OWCA Offices	11
Records Management	12
Second Injury Board	12
Workers' Compensation Fraud Claims	12
Workplace Safety.....	12
STATISTICAL REVIEW, 2007 – 2011	13
Table & Chart: Percentage of Workplace Injury by Cause, 2007 – 2011	13
WORKPLACE FATALITIES, 2007 – 2011	14
Table & Chart: Workplace Fatality Reported Claims, 2007 – 2011.....	14
CAUSE OF WORKPLACE FATALITIES, 2007 – 2011	15
Table & Chart: Cause of Workplace Fatalities 2007 – 2011	15
STATEWIDE DISTRICT DIRECTORY.....	16

EXECUTIVE SUMMARY

The Louisiana Office of Workers' Compensation Administration (OWCA) was created in 1983 in order to administer the Louisiana Workers' Compensation Act. Although many significant changes to its provisions have been made since then, the basic premise and purpose of that law have remained much the same. The premise is that employees injured in the workplace should be compensated regardless of who is at fault. The purpose is to provide protection to the injured employee through employer safety efforts, medical treatment, and partial compensation for lost income. The office exercises its authority under Chapter 10 of Title 23 of the Louisiana Revised Statutes and is established within the Louisiana Workforce Commission (LWC). The OWCA is administered by a director of the LWC pursuant to R.S. 36:307. The OWCA operates on a fiscal year that begins July 1 each year and ends on June 30 of the following year.

In 2011, the Office of Workers' Compensation Administration (OWCA) continued re-directing its focus to the question of improving service levels. Internal processes were subjected to detailed review, and the rollout of new delivery models began.

In 2011, the Hearings section received 5,270 disputed claims for compensation, an increase of 225 over disputes filed in 2010. The Section continues to assist parties in resolving their disputes. It does so through both adjudication and mediation. In 2011 the Hearings section conducted 3,081 trials and mediated 1,980 disputes. Additionally, 4,346 settlements were approved in 2011.

The Fraud section provides the OWCA with an aggressive program to fight fraud in the workers' compensation system. During 2011, the Fraud section continued high standards of investigation and ensured the continued prosecution of criminal activity. Throughout 2011, the section participated in training seminars to educate the public about the penalties for workers' compensation fraud and encouraged the use of its nationwide toll-free hotline (800) 201-3362, as well as internet resources to report suspected fraud directly to the office. In 2011, the OWCA Fraud Section began working cooperatively with the Office of Unemployment Insurance in both claim and tax fraud investigations. These joint efforts should result in an increase in fraud detection during the coming years.

In 2011, the section performed 2,660 investigations of those individuals, self-insured entities, and employers who were alleged to have violated the Louisiana Workers' Compensation Act. Twenty-four referrals for prosecution were submitted to the Attorney General's office to determine if sufficient information was evident to warrant further investigation with 16 arrests being reported. The number of referrals for unemployment insurance fraud increased for the third consecutive year. There was an increase of 32% over referrals made in 2010. This upward trend is expected to continue.

The Workplace Safety section distributed thousands of quarterly safety reports (LWC-WC-1017-A) which help identify employers who are experiencing above-average injuries for their industry classification. Additionally, the unit conducted 623 on site visits. The OSHA Consultation Program's continuing objective is to persistently improve the efficiency, quality and effectiveness of service to Louisiana employers and employees. This is achieved through consultation visits, outreach campaigns and training assistance, as well as supporting certain OSHA Performance Goals. A total 375 visits were conducted, and of that total, 300 were Initial, 19 were Training and Education, and 56 were Follow-up. The Project identified 659 serious and

imminent hazards in 110 initial safety visits with hazards and 388 serious and imminent hazards in 108 initial health visits with hazards. The Project also distributed over 300 CDs to residential contractors throughout the State.

The Records Management section responded to more than 19,169 requests for public information, with a response time of less than three days. In 2011, 29,567 workers' compensation reporting claim forms (forms processed by mail) were reported to the section, an increase of 5 percent from the previous year. The number of electronic LWC-WC-1007 forms continues to increase as more customers notice a dramatic improvement in cost savings and timeliness of claims information reported through e-filing.

INTRODUCTION

Vision

The Louisiana Workforce Commission will be an indispensable provider of workforce solutions.

Mission

The Louisiana Workforce Commission will lead the development of the system that delivers the workforce Louisiana's current and future employers need.

Values

- Excellence
- Trust
- Respect
- Fairness
- Involvement
- Open Communications

§1310.10. Provides that the Louisiana Workforce Commission (LWC), Office of Workers' Compensation Administration (OWCA) shall:

Report to governor, supreme court, and legislature annually, on or before the first day of April, commencing in 1990, the director shall prepare and submit a report for the prior calendar year to the governor, the chief justice of the supreme court, the president of the Senate, the speaker of the House of Representatives, and each member of the legislature, which shall include a statement of the number of awards made and the causes of the accidents leading to the injuries for which the awards were made, total workload data of the workers' compensation judges, a detailed report of the work load of each workers' compensation judge, a detailed statement of the expenses of the offices of the director of workers' compensation and the workers' compensation judges, together with any other matter which the director deems proper to report, including any recommendations he may desire to make.

This 2011 Annual Report includes all of the aforementioned requirements to satisfy §1310.10. Furthermore, the report gives an overview on the progress that the OWCA has made in the last calendar year. It demonstrates its dedication to the LWC's mission to promote workforce development and improve workplace safety and health throughout Louisiana. The report, however does not cover all aspects of what happens in the OWCA, nor is it intended to do so, although all of those elements are important.

More detailed information is available upon request by contacting owca@lwc.la.gov.

OFFICE OF WORKERS' COMPENSATION FUNDING AND EXPENDITURES

The OWCA's sole source of funding is a tax assessment paid by workers' compensation insurance carriers and self-insured. While the fund is considered to be "self-generated" and "dedicated," the OWCA's budget and expenditures are nonetheless subject to legislative oversight and approval.

All insurers and employers that pay Louisiana workers' compensation benefits submit a report annually to the OWCA on a form provided by the OWCA showing the amount of actual Louisiana workers' compensation benefits paid the previous calendar year. It is important to note that this assessment funds the operation of the OWCA, but it does not pay workers' compensation benefits for injured workers.

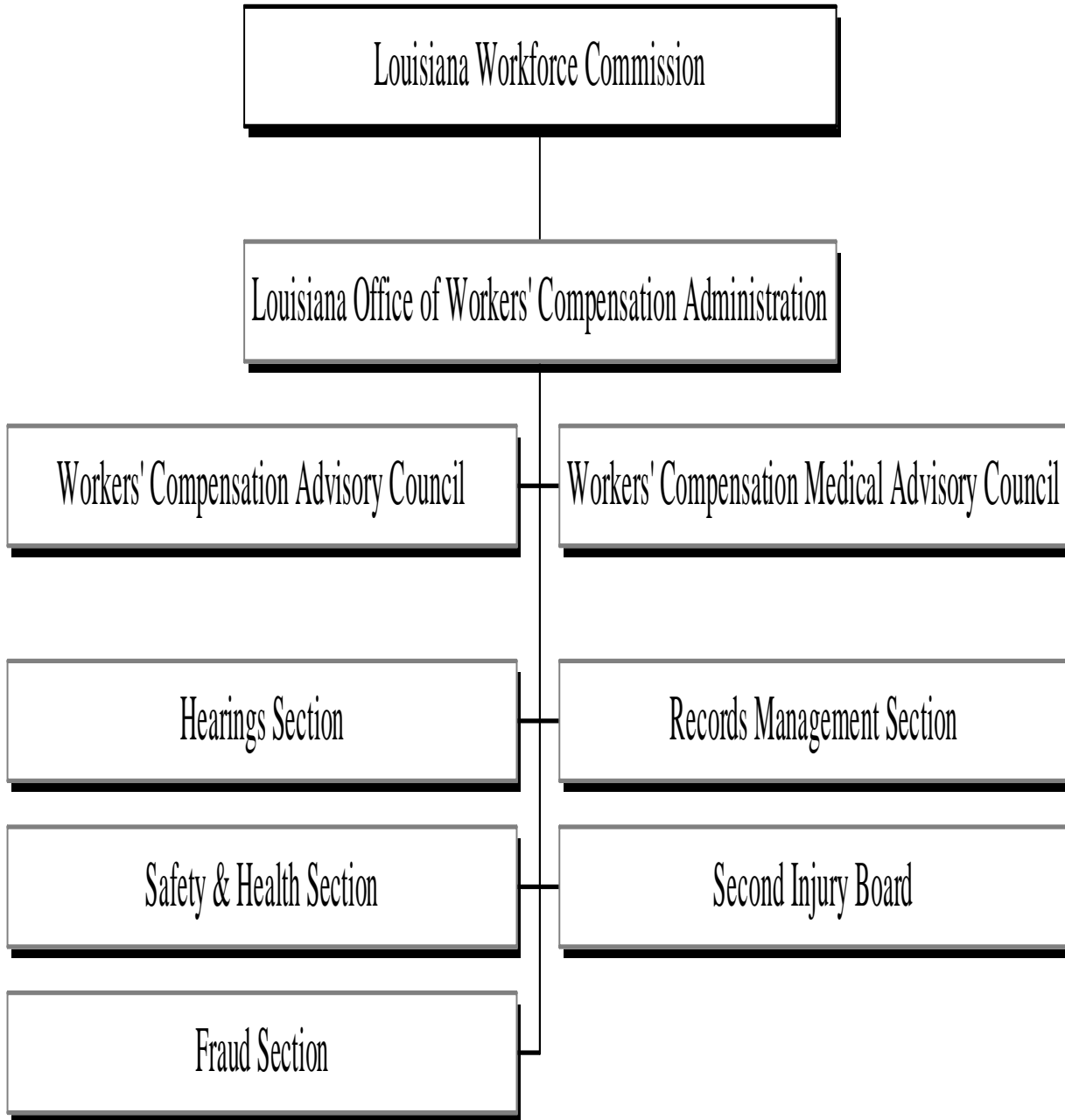
The approved budget for fiscal year (FY) 2011 was \$13,386,159 and the budget includes revenue increases, expenditure reductions, and service restructuring with the intent to deliver the results the public expected. The increases in expenditures are attributed to the office maintaining administrative services levels on most areas and making significant improvements in technology. During 2011, sections within the OWCA continued to "hold the line" in the face of growing state budget deficits.

Table 1 shows that in FY 2011 Salaries accounted for 46 percent and Other Charges accounted for 8 percent for fiscal year 2011. Related Benefits accounted for 17 percent and the remaining 29 percent was Other Compensation, Travel and Planning, Operating Services, Supplies, Professional Services, Acquisitions and IAT.

Table 1
Estimated Expenditures to Administer the Workers' Compensation Act
Fiscal Years 2007 – 2011

Description	Fiscal Year 2007	% of Total	Fiscal Year 2008	% of Total	Fiscal Year 2009	% of Total	Fiscal Year 2010	% of Total	Fiscal Year 2011	% of Total
Salaries	\$ 5,234,555	44	\$ 5,792,920	45	\$ 5,819,214	46	\$ 6,190,146	48	\$ 6,143,302	46
Other Compensation	\$ 77,818	1	\$ 153,846	1	\$ 166,438	1	\$ 190,127	1	\$ 171,508	1
Related Benefits	\$ 1,753,265	15	\$ 1,927,612	15	\$ 1,856,783	15	\$ 2,149,376	17	\$ 2,218,945	17
Travel & Planning	\$ 144,915	1	\$ 117,993	1	\$ 103,374	1	\$ 84,405	1	\$ 109,704	1
Operating Services	\$ 1,258,653	11	\$ 1,490,064	12	\$ 1,521,870	12	\$ 1,381,096	11	\$ 1,425,573	11
Supplies	\$ 114,523	1	\$ 82,733	1	\$ 87,309	1	\$ 120,783	1	\$ 140,740	1
Professional Services	\$ 902,927	8	\$ 1,087,284	8	\$ 1,056,081	8	\$ 1,115,918	8	\$ 960,734	7
Other Charges	\$ 2,125,122	18	\$ 2,114,906	16	\$ 1,920,217	15	\$ 1,566,748	12	\$ 1,126,567	8
Acquisitions	\$ 86,250	1	\$ 66,245	1	\$ 132,169	1	\$ 68,032	1	\$ 203,463	2
IAT									\$ 885,623	6
Total Expenditures	\$ 11,698,028	100	\$ 12,833,603	100	\$ 12,663,455	100	\$ 12,866,631	100	\$ 13,386,159	100

STRUCTURE OF THE WORKERS' COMPENSATION ADMINISTRATION OFFICE



ADMINISTRATION

The OWCA is headquartered in Baton Rouge. Its mission is to ensure a manageable, cost effective workers' compensation system. It is led by a strong administration team that continues to meet the administration's day-to-day challenges with great focus on customer service and many concrete examples of operational efficiencies.

Sections within OWCA:

ADMINISTRATIVE SECTION

Wes Hataway, Office of Workers' Compensation Director

The OWCA is headed by a Director who is appointed by and serves at the pleasure of the Governor.

The telephone number for the Administrative section is (225) 342-7561. The FAX number is (225) 342-5665. The email address for the director is whataway@lwc.la.gov.

FRAUD SECTION

Kaye H. Fournet, Manager

The Fraud section detects and deters workers' compensation fraud and educates the public about the penalties for workers' compensation fraud. It conducts investigations of alleged fraudulent activities reported to the Office of Workers' Compensation. The Fraud section provides resources to employers and insurers to increase their awareness of potentially fraudulent claims and offers guidance to avoid future instances of fraud. These resources include training seminars, the promotion of the use of written and electronic material, with its nationwide toll-free fraud hotline (800) 201-3362, as well as Internet resources to report suspected fraud directly to the office. Additionally, the Fraud section monitors employer compliance with the worker's compensation act and the assessment and collection of compliance penalties.

The telephone number for the Fraud section is (225) 342-7558. The FAX number is (225) 342-1880. The email address for its manager is kfournet@lwc.la.gov.

HEARINGS SECTION

Sheral Kellar, Workers' Compensation Chief Judge

The Hearings section's primary duty is to resolve disputed workers' compensation claims filed with the Office of Workers' Compensation Administration. A claim for benefits, the controversion of entitlement to benefits, or other relief under the Workers' Compensation Act is initiated by filing the appropriate form ([LWC-WC-1008](#)) with the office. There are ten district offices located statewide: [Alexandria](#), [Baton Rouge](#), [Covington](#), [Harahan](#), [Houma](#), [Lafayette](#), [Lake Charles](#), [Monroe](#), [New Orleans](#), and [Shreveport](#).

The telephone numbers for the main office of the Hearings section are (800) 201-2499 or (225) 342-7970. The FAX number is (225) 342-4790. The email address for its manager is wchearings@lwc.la.gov.

LEGAL SECTION

The Legal section serves in an advisory capacity to the Director and the office staff in legal matters falling under the jurisdiction of the OWCA. It also represents the OWCA in all matters in which the Director or the office are named. It also represents the State of Louisiana in defending constitutional challenges to the workers' compensation statutes and procedures.

The telephone numbers for the Legal section are (800) 201-3405 or (225) 342-7557. The FAX number is (225) 342-7593.

RECORDS MANAGEMENT SECTION

Andre de la fuente, Manager

The Records Management section is a support section for the OWCA. The section publishes the OWCA Annual Report, which highlights accomplishments of the OWCA in a given year and offers statistical information concerning workplace injuries and illnesses. It provides OWCA reporting forms, as well as instructions for their completion, by means of electronic filing on the LWC Website (www.laworks.net). The section responds to public record requests. It also serves as a repository for workers' compensation records and oversees the imaging of records of the office. In addition, the section provides copies of those records that are considered public records, whether on microfilm, electronically imaged, or on paper. In 2008 the Records Management section acquired the Occupational Safety and Health (OSH) Unit, which was previously in the Office of Occupational Information Services Division. This unit partners with the U.S. Department of Labor's Bureau of Labor Statistics (BLS) to provide fatality counts and estimates on work-related injuries and illnesses.

The telephone numbers for the Records Management section are (800) 201-3457 or (225) 342-5662. The FAX numbers are (225) 342-7582 and (225) 342-3539. The email address for its manager is recordsmanagement@lwc.la.gov.

SECOND INJURY BOARD

Pauline Williams, Director

The Second Injury Board (SIB) is an employer/insurer funded program, whose purpose is to encourage the employment of individuals with pre-existing permanent partial disabilities that are a hindrance or obstacle to obtaining employment. The SIB promotes the hiring of these individuals by protecting employers from excess liability for workers' compensation costs resulting from a job injury when statutory requirements are met. The SIB reimburses employers or their insurers for excess benefits paid to these employees on claims meeting those requirements. The SIB makes electronic fund transfer ([EFT](#)) options available to employers or their insurers for the payment of reimbursements.

The telephone numbers for the Second Injury Board section are (800) 201-2493 or (225) 342-7866. The FAX number is (225) 219-5968. The email address for its director is pwilliams2@lwc.la.gov.

WORKPLACE SAFETY SECTION

Steve Bowers, Manager – Safety & Health

Sandra Stokes, Manager – OSHA Consultation

The Workplace Safety section is responsible for distribution and processing of quarterly reports (LWC-WC-1017A) which identifies employers who are experiencing above-average injuries for their industry classification. The report is due one month from the quarter reported. In addition, the section provides on-site facility inspections to identify hazards and assess program elements to ensure compliance with workplace safety provisions. The Louisiana OSHA Consultation Program provides free assistance to employers in identifying potential hazards at their worksites, improve their occupational safety and health management systems, and even qualify for a one-year exemption from programmed OSHA inspections. The service is delivered by well-trained professional staff. Most consultations take place on-site, though limited services away from the worksite are available. Primarily targeted for smaller businesses, this safety and health consultation program is completely separate from the OSHA compliance effort. In addition, no citations are issued or penalties proposed. All findings are confidential. Your name, your firm's name, and any information you provide about your workplace, plus any unsafe or unhealthful working conditions that the consultant uncovers, will not be reported routinely to the OSHA inspection staff. The employer's only obligation will be to correct serious job safety and health hazards — a commitment which you are expected to make prior to the actual visit and carry out in a timely manner.

The telephone numbers for the Workplace Safety and Consultation section are (800) 201-2495 or (225) 342-9601. The FAX number is (225) 342-5158. The email address for the section is workplacesafety@lwc.la.gov.

WORKERS' COMPENSATION COUNCILS:

WORKERS' COMPENSATION ADVISORY COUNCIL

Wes Hataway, Chairman

The Advisory Council for the Office of Workers' Compensation was created within the Louisiana Workforce Commission pursuant to R.S. 23:1294. The Purpose of the Council is to consult periodically with the director on the efficient administration of the Office of Workers' Compensation. The Advisory Council is comprised of representatives from the general public, business, labor, trial attorneys and the insurance industry. The chairman of the council is the Director of the Office of Workers' Compensation Administration.

The Louisiana Workforce Commission's Website, www.laworks.net, displays the Workers' Compensation Advisory Council, which includes a listing of 2011 scheduled meetings for the council and locations for each meeting. A list with current members of the council is available on Louisiana government website.

http://www.legis.state.la.us/boards/board_members.asp?board=820.

WORKERS' COMPENSATION MEDICAL ADVISORY COUNCIL

The Medical Advisory Council reviews current guidelines and provides recommendations for a medical treatment schedule to guide treatment for workplace illnesses and injuries. It is made up of at least one orthopedic surgeon, neurosurgeon, neurologist, interventional pain management physician, family practice physician, physical and occupational therapists, psychologist and psychiatrists and a representative from the Chiropractic Association of Louisiana. Members of the council are appointed to two-year terms by the director of the state workers' compensation office.

The Louisiana Workforce Commission's Website, www.laworks.net, displays the Workers' Compensation Medical Council's scheduled meetings and locations.

OWCA SECTION ACTIVITY, 2007 – 2011

The following tables detail the activities of the OWCA sections for years 2007 – 2011:

- Section 1 [Workers' Compensation Claims, 2007 – 2011](#)

- Section 2 [Hearings](#)
 - [Number of Disputed Claims Received by OWCA Offices, 2007 – 2011](#)
 - [Number of Mediation Conferences Held by OWCA Offices, 2007 – 2011](#)
 - [Number of Trials Held by OWCA Offices, 2007 – 2011](#)
 - [Number of Decisions Rendered by OWCA Offices, 2007 – 2011](#)
 - [Number of Appeals Filed by OWCA Offices, 2007 – 2011](#)
 - [Number of Settlements Approved by OWCA Offices, 2007 – 2011](#)

- Section 3 [Records Management, 2007 – 2011](#)

- Section 4 [Second Injury Board, 2007 – 2011](#)

- Section 5 [Workers' Compensation Fraud Claims, 2007 – 2011](#)

- Section 6 [Workplace Safety, 2007 – 2011](#)

OWCA SECTION ACTIVITY, 2007 – 2011

WORKERS' COMPENSATION CLAIMS (Section #1)										
Year	Undisputed Claims Processed			Disputed Claims		Claims Closed			Claims Settled	
2007	16,150			6,712		5,168			5,279	
2008	14,550			7,691		5,968			4,960	
2009	12,833			7,562		5,271*			5,007	
2010	11,569 *			5,045		4,512**			4,382	
2011	11,714**			5,270		5,457**			4,346	
HEARINGS (Section # 2)										
Year	Disputed Claims Filed	Mediation Conferences Held		Claims Resolved Prior To Trial	Trials Held		Decisions Rendered	Appeals Filed	Settlements Approved	
2007	6,712	2,544		2,703	2,407		2,309	89	5,279	
2008	7,691	3,219		4,019	2,873		2,548	160	4,960	
2009	7,562	3,955		2,516	1,536		1,508	176	5,007	
2010	5,045	3,674		5,302	3,035		3,054	192	4,382	
2011	5,270	1,980		5,122	3,081		3,981	217	4,346	
Number of Disputed Claims Received by OWCA Offices										
Year	1W Shreveport	1E Monroe	2 Alexandria	3 Lake Charles	4 Lafayette	5 Baton Rouge	6 Covington	7 Harahan	8 New Orleans	9 Houma
2007	532	386	735	1,475	1,096	676	498	515	395	404
2008	646	365	666	1,603	1,121	1,056	641	694	487	412
2009	845	373	795	747	961	805	739	1,045	728	524
2010	365	289	501	760	590	708	495	499	401	437
2011	457	347	359	532	1,069	625	496	538	439	408
Number of Mediation Conferences Held by OWCA Offices										
Year	1W Shreveport	1E Monroe	2 Alexandria	3 Lake Charles	4 Lafayette	5 Baton Rouge	6 Covington	7 Harahan	8 New Orleans	9 Houma
2007	276	216	313	309	308	140	293	10	488	191
2008	307	21	592	534	563	64	11	457	454	216
2009	330	236	521	380	497	406	475	457	370	283
2010	287	206	649	373	399	321	368	390	350	331
2011	235	151	406	286	241	405	146	133	212	179
Number of Trials Held by OWCA Offices										
Year	1W Shreveport	1E Monroe	2 Alexandria	3 Lake Charles	4 Lafayette	5 Baton Rouge	6 Covington	7 Harahan	8 New Orleans	9 Houma
2007	209	148	195	180	308	219	173	9	653	312
2008	237	158	237	128	283	191	218	219	690	512
2009	123	69	141	144	184	123	148	148	334	122
2010	108	115	317	192	402	312	464	273	587	265
2011	221	133	158	270	427	240	563	320	473	276
Number of Decisions Rendered by OWCA Offices										
Year	1W Shreveport	1E Monroe	2 Alexandria	3 Lake Charles	4 Lafayette	5 Baton Rouge	6 Covington	7 Harahan	8 New Orleans	9 Houma
2007	164	130	176	277	282	218	134	11	637	279
2008	202	128	230	108	263	191	193	191	778	264
2009	146	61	154	97	169	149	156	154	304	118
2010	44	117	208	189	304	290	439	384	612	269
2011	221	132	171	234	342	194	384	298	1,763	242
Number of Appeals Filed by OWCA Offices										
Year	1W Shreveport	1E Monroe	2 Alexandria	3 Lake Charles	4 Lafayette	5 Baton Rouge	6 Covington	7 Harahan	8 New Orleans	9 Houma
2007	3	11	16	11	11	0	15	1	13	8
2008	21	19	33	16	17	3	19	4	17	11
2009	16	15	35	16	28	3	11	14	24	14
2010	22	11	41	16	9	27	23	23	15	5
2011	10	14	18	53	29	22	25	17	15	14
Number of Settlements Approved by OWCA Offices										
Year	1W Shreveport	1E Monroe	2 Alexandria	3 Lake Charles	4 Lafayette	5 Baton Rouge	6 Covington	7 Harahan	8 New Orleans	9 Houma
2007	452	401	542	460	726	762	546	205	724	461
2008	461	387	459	468	720	738	506	410	462	349
2009	500	336	521	377	720	828	459	461	406	399
2010	233	362	267	432	631	741	469	508	376	363
2011	317	391	244	417	706	979	527	507	357	391

OWCA SECTION ACTIVITY, 2007 – 2011 (continued)

RECORDS MANAGEMENT (Section # 3)								
Year	Forms Reported					Records Requests		
2007	31,502					7,856		
2008	31,796					9,494		
2009	29,716					10,150		
2010	28,178					18,423		
2011	29,567					19,169		
SECOND INJURY BOARD (Section # 4)								
Year	Claims Received	Claims Closed	Decisions Rendered	Claims Pending	Ongoing Claims	Assessment Actual	Reimbursement	Total Administrative Costs
2007	979	951	1,060	3,929	2,223	\$42,447,476	\$41,549,518	\$862,811
2008	957	1,192	947	3,902	2,243	\$42,429,319	\$42,181,211	\$1,081,014
2009	1,037	1,722	1,351	3,208	1,944	\$44,573,893	\$38,419,534	\$1,049,408
2010	981	1,201	1,035	3,281	1,888	\$45,754,077	\$43,690,296	\$1,085,819
2011	985	955	977	3,189	1,710	\$47,234,806	\$49,605,570	\$1,250,631
WORKERS' COMPENSATION FRAUD CLAIMS (Section # 5)								
Year	Investigations Initiated	Investigations Completed	Referrals for Prosecution	Arrests & Prosecutions	Referrals for U.I. Fraud	Convictions	Percent of Investigations Completed	
2007	1,833	1,731	8	6	10	5	94%	
2008	1,987	1,698	4	6	4	1	85%	
2009	3,310	2,944	26	15	16	2	94%	
2010	2,524	2,298	24	11	19	2	91%	
2011	2,660	2,455	24	16	24	1	92%	
WORKPLACE SAFETY (Section # 6)								
Year	Clients Assisted	Facility/On-site Inspections	Seminars, Training & Speaking Engagements	Number of Safety & Health Hazards Identified	Number of Serious Health Hazards Identified	Consultation Inquiries	Requests Received for Services	
2007	11,890	1,102	23	1,013	997	415	224	
2008	11,680	599	17	809	699	304	152	
2009	14,293	1,485	38	1,277	472	1,679	267	
2010	15,075	1,127	92	1,035	1,004	1,104	189	
2011	14,425	1,231	65	1,309	1,010	449	409	

* Data has been amended

** Preliminary Data

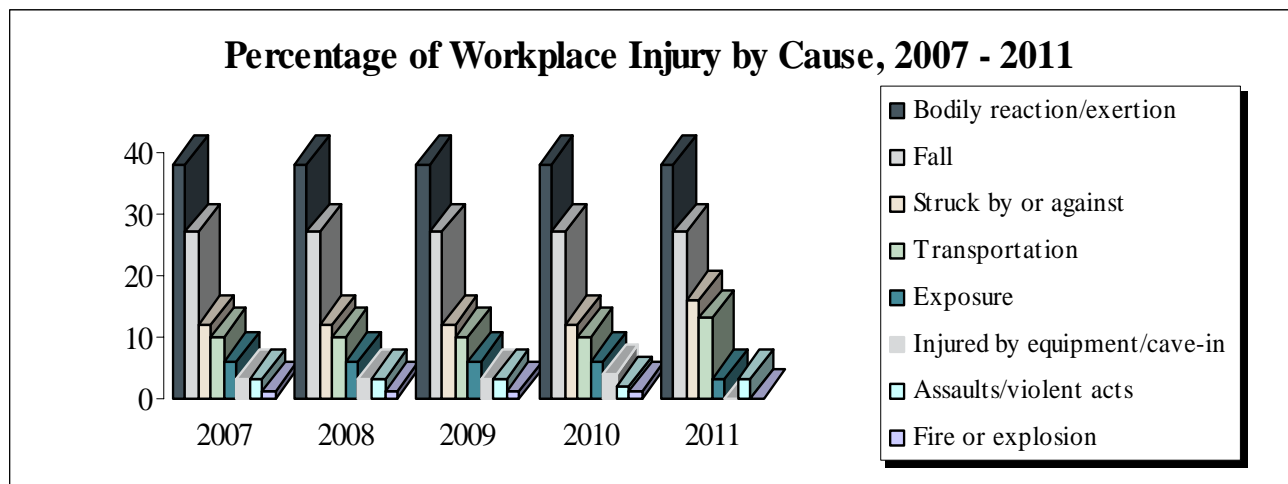
STATISTICAL REVIEW

For the past five years, the OWCA has been reviewing the manner in which injuries and illness occurred in the workplace. Over a five year period, there were 32,280 disputed workers' compensation cases reviewed for cause of injury and illness. According to the table below, per year, Bodily Reaction/Exertion was cited as having the highest percentage of cases (38). Falls continued to be the second cause of injury followed by Struck By or Against. Per year, twenty-seven percent of the cases reported resulted from falls. More than half of these incidents were falls onto the same level on which the employee had been standing. Although variations occur in four of the categories when compared by year, the data reflects no major shifts in the three most significant types of cause of injuries and illness.

Percentage of Workplace Injury by Cause, 2007 – 2011

Cause of Injury	2007	2008	2009	2010	2011
Bodily Reaction/Exertion	38	38	38	38	38
Fall	27	27	27	27	27
Struck By or Against	12	12	12	12	16
Transportation	10	10	10	10	13
Exposure	6	6	6	6	3
Injured by Equipment/Cave-In	3	3	3	4	0
Assaults/Violent Acts	3	3	3	2	3
Fire or Explosion	1	1	1	1	0

Note: The claims reported are workplace injuries that are identified through the filings of the LWC-WC-1008 form.



WORKPLACE FATALITIES

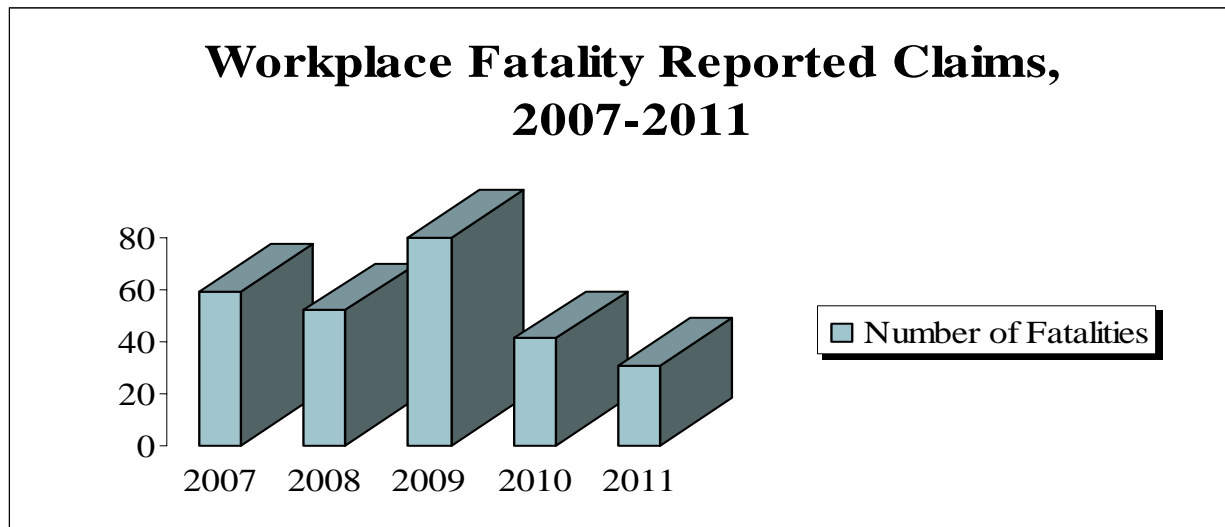
Each year, a small number of workplace fatalities result in the tragic death of workers. Workplace fatalities gradually declined in 2007 and 2008; however, the number of workplace fatalities peaked by 54% in 2009. Fatalities again declined in 2010 and 2011. The number of workplace fatalities was calculated by using data from the LWC-WC-1007 form.

The information represents workplace fatalities in instances that were reported where:

- death occurred while on the employer's premises and is work-related
- death occurred off the employer's premises and is work-related

Workplace Fatality Reported Claims, 2007 – 2011

Year	Number of Fatalities	Percentage of Change from Prior Year
2007	59	-5%
2008	52	-12%
2009	80	54%
2010	41	-49%
2011	31	-24%



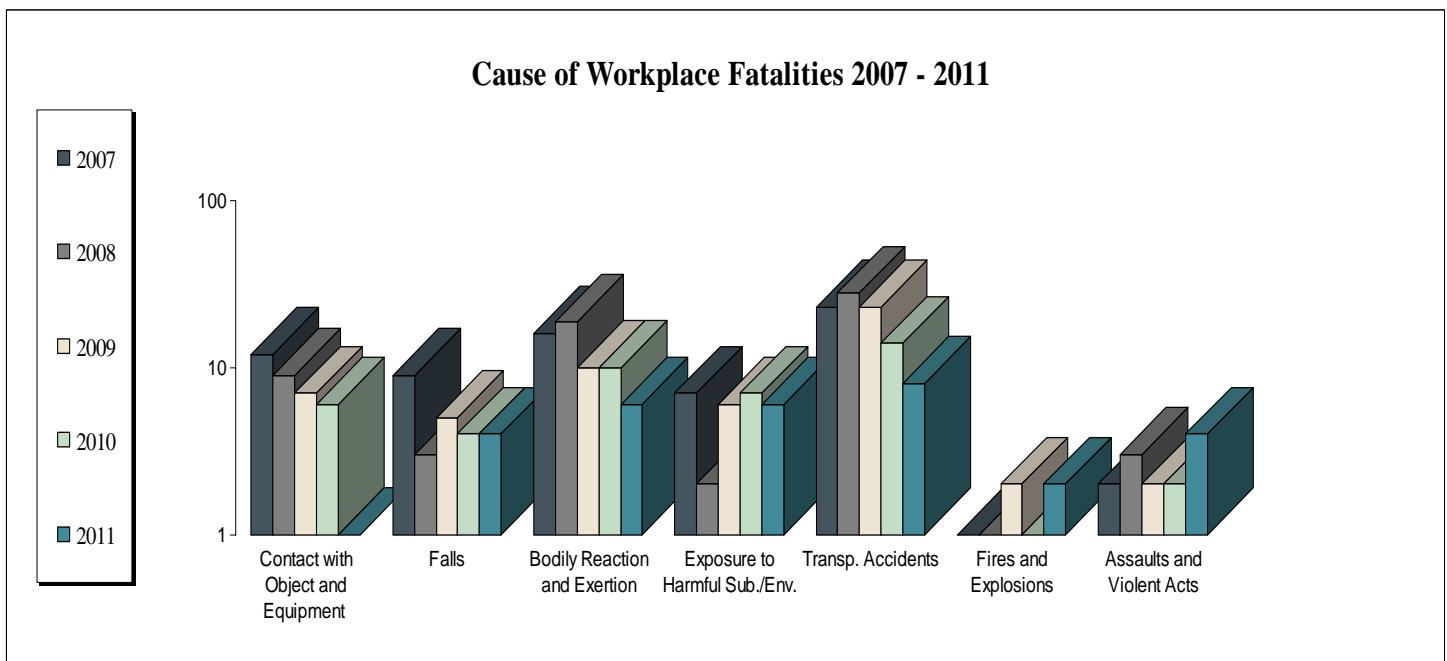
CAUSE OF WORKPLACE FATALITIES

The table below represents the cause of workplace fatalities over a five year period. Bodily Reaction and Exertion, which accounted for 23 percent of the claims, is a non-impact injury primarily associated with lifting and body motions which causes stress or strain to some part of the body. Heart attacks, which are bodily reaction and exertion, accounted for 41 of the 61 claims. Transportation accidents registered the highest claim rates which was 36 percent. The reported number of transportation accidents declined in 2011. Nearly half of all transportation accidents were caused by motor vehicles. Over a five year period, motor vehicle accidents accounted for an average of 17 cases and aircraft crashes accounted for an average of 3 cases.

Cause of Workplace Fatalities, 2007 – 2011

Year	Contact with Object & Equipment	Falls	Bodily Reaction & Exertion	Exposure to Harmful Substances or Environments	Transportation Accidents	Fires & Explosions	Assaults & Violent Acts
2007	12	9	16	7	23	0	2
2008	9	3	19	2	28	0	3
2009	7	5	10	6	23	2	2
2010	6	4	10	7	14	1	2
2011	1	4	6	6	8	2	4
Total	35	25	61	28	96	5	13

Note: The claims reported are workplace fatalities that are identified through the filings of the LWC-WC-1007 form. Date has been revised for all years as additional 1007s are processed or duplicates eliminated.



STATEWIDE DISTRICT DIRECTORY

Baton Rouge Administrative Office

CHIEF JUDGE SHERAL KELLAR
OFFICE OF WORKERS' COMPENSATION
P.O. Box 94040
1001 North 23rd Street
Baton Rouge, Louisiana 70804-9040
TELEPHONE: (225) 342-7970
TELEPHONE: (800) 201-2499
FAX: (225) 342-4790

District 1W

OFFICE OF WORKERS' COMPENSATION
DISPUTE RESOLUTION SPECIALIST: Daniel Kirkpatrick
9234 Linwood
Shreveport, Louisiana 71106-7001
TELEPHONE: (318) 676-5331
TELEPHONE: (800) 209-7173
FAX: (318) 676-5332

District 1E

OFFICE OF WORKERS' COMPENSATION
DISPUTE RESOLUTION SPECIALIST: Camelia Antie
1401 Hudson Lane
Monroe, Louisiana 71301-5730
TELEPHONE: (318) 362-3078
TELEPHONE: (800) 209-7321
FAX: (318) 362-3083

District 2

OFFICE OF WORKERS' COMPENSATION
DISPUTE RESOLUTION SPECIALIST: Jeanette Dodge
3724 Government Street
Alexandria, Louisiana 71302-3327
TELEPHONE: (318) 487-5966
TELEPHONE: (800) 209-7329
FAX: (318) 487-5967

District 3

OFFICE OF WORKERS' COMPENSATION
DISPUTE RESOLUTION SPECIALIST: Deborah Garriet
4250 Fifth Avenue, Suite 3
Lake Charles, Louisiana 70607-3812
TELEPHONE: (337) 475-4882
TELEPHONE: (888) 768-8745
FAX: (337) 475-4884

District 4

OFFICE OF WORKERS' COMPENSATION
DISPUTE RESOLUTION SPECIALIST: Jennifer Meche
556 Jefferson Street, First Floor
Lafayette, Louisiana 70501-6947
TELEPHONE: (337) 262-1057
TELEPHONE: (800) 209-7174
FAX: (337) 262-1106

District 5

OFFICE OF WORKERS' COMPENSATION
DISPUTE RESOLUTION SPECIALIST: Audrey Scott
224 Florida Boulevard, Suite 100
Baton Rouge, Louisiana 70801-1719
TELEPHONE: (225) 219-4378
TELEPHONE: (800) 209-7175
FAX: (225) 219-4377

District 6

OFFICE OF WORKERS' COMPENSATION
DISPUTE RESOLUTION SPECIALIST: Jonna Schneider
19374 North Third Street
Covington, Louisiana 70433-8813
TELEPHONE: (985) 871-1258
TELEPHONE: (888) 575-6149
FAX: (985) 871-1264

District 7

OFFICE OF WORKERS' COMPENSATION
DISPUTE RESOLUTION SPECIALIST: Kenneth Dupre
880 West Commerce Road, Suite 401
Harahan, Louisiana 70123-3333
TELEPHONE: (504) 736-8606
TELEPHONE: (866) 253-5830
FAX: (504) 736-8608

District 8

OFFICE OF WORKERS' COMPENSATION
DISPUTE RESOLUTION SPECIALIST: Christine Melford
1450 Poydras Street, Suite 838
New Orleans, Louisiana 70112-2001
TELEPHONE: (504) 568-6952
TELEPHONE: (800) 209-7232
FAX: (504) 568-8706

District 9

OFFICE OF WORKERS' COMPENSATION
DISPUTE RESOLUTION SPECIALIST: Debra Duplantis
8026 Main Street, Suite 404
Houma, Louisiana 70360-3407
TELEPHONE: (985) 857-3775
TELEPHONE: (800) 262-1497
FAX: (985) 857-3781

Louisiana Workforce Commission
Office of Workers' Compensation
Post Office Box 94040
Baton Rouge, LA 70804-9040
Telephone: (225) 342-7555
owca@lwc.la.gov



www.laworks.net