

**OWCA** 2010 ANNUAL REPORT



[www.laworks.net](http://www.laworks.net)

Louisiana Workforce Commission  
Office of Workers' Compensation  
Post Office Box 94040  
Baton Rouge, LA 70804-9040  
Telephone: (225) 342-7555  
owca@lwc.la.gov



Cover images: FEMA News Photos and US Coast Guard



[www.laworks.net](http://www.laworks.net)

The Louisiana Workforce Commission (LWC), Office of Workers' Compensation Administration (OWCA), respectfully submits its 2010 Annual Report. This report, past annual reports and other OWCA information are available on the LWC's website [www.LAWORKS.net](http://www.LAWORKS.net). In accordance with the Executive Order BJ-08-08, the OWCA will disseminate this Annual Report via electronic means whenever possible. However, 75 hard copies of the 2010 Annual Report have been published, at a cost of \$94.68. LA. R.S 43.31 requires copies to be made available upon request or to individuals without the ability to receive this information in an electronic format. This document was published by the Louisiana Workforce Commission and OWCA, Post Office Box 94040, Baton Rouge, Louisiana 70804-9040.

The material in this publication is in the public domain and may be reproduced without permission if the State of Louisiana, Office of Workers' Compensation Administration is cited as the source.

## EXECUTIVE SUMMARY

The Louisiana Office of Workers' Compensation Administration (OWCA) was created in 1983 in order to administer the Louisiana Workers' Compensation Act. Although many significant changes to its provisions have been made since then, the basic premise and purpose of that law have remained much the same. The premise is that employees injured in the workplace should be compensated regardless of who is at fault. The purpose is to provide protection to the injured employee through employer safety efforts, medical treatment, and partial compensation for lost income. The office exercises its authority under Chapter 10 of Title 23 of the Louisiana Revised Statutes and is established within the Louisiana Workforce Commission (LWC). The OWCA is administered by a director of the LWC pursuant to R.S. 36:307. The OWCA operates on a fiscal year that begins July 1 each year and ends on June 30 of the following year.

In 2010, the Office of Workers' Compensation Administration (OWCA) continued re-directing its focus to the question of improving service levels. Internal processes were subjected to detailed review, and the rollout of new delivery models began.

In 2010, the Hearings section continued to receive disputed workers' compensation claims and assist parties in resolving their disputes. The section received 5,045 disputed claims in 2010, a decrease of 2,517 disputed claims from 2009. Through efforts of the section, approximately 3,035 trials were held in 2010. Four thousand three hundred eighty two settlements were also approved in 2010.

The Fraud section provides the OWCA with an aggressive program to fight fraud in the workers' compensation system. During 2010, the Fraud section continued high standards of investigation and ensured the continued prosecution of criminal activity. Throughout 2010, the section participated in training seminars to educate the public about the penalties for workers' compensation fraud and encouraged the use of its nationwide toll-free hotline (800) 201-3362, as well as Internet resources to report suspected fraud directly to the office. In 2010, the section performed 2,524 investigations of those individuals, self-insured entities, and employers who were alleged to have violated the Louisiana Workers' Compensation Act. For the period 2006-2010, the year 2009 still reports having the highest number of referrals for prosecutions. Twenty-four referrals for prosecution were submitted to the Attorney General's office to determine if sufficient information was evident to warrant further investigation in 2010. "Referrals for U.I. Fraud" increased 19% from the previous year and considerably more than the reported total for 2008. In 2010, the total number of reported arrests and prosecutions were 11, a decrease of 27% over the 2009 reporting period.

The Workplace Safety section identified 1,035 safety and health hazards and of this number 1,004 were serious hazards. The section conducted 1,127 on-site inspections. The unit also participated in 1 Safety and Health Achievement Recognition Program (SHARP) for Louisiana employers. The unit distributed thousands of quarterly safety reports (LWC-WC-1017-A) which help identify employers who are experiencing above-average injuries for their industry classification.

The Medical Services section continued to process disputed medical claims in less than 30 days from date of receipt. A total of 636 independent medical examination (IME) requests were received in 2010, an increase of 26% over the year 2009. In 2010, the average time to review and schedule an independent medical exam was 4.83 days, a 29% increase from the 3.39 days reported in 2009. The section received 494 disputed medical reimbursement claims in 2010,

citing a decrease of 36% from the year 2009. An average of 107 medical claims per month were received in 2010, a decrease of 12% from 2009.

The Records Management section responded to more than 18,423 requests for public information, with a response time of less than three days. In 2010, 28,178 workers' compensation reporting claim forms were reported to the section, a decrease of 5 percent from the previous year. The number of workers' compensation reporting claim forms processed decreased by 9 percent. The number of electronic LWC-WC-1007 forms continues to increase as more customers notice a dramatic improvement in cost savings and timeliness of claims information reported through e-filing.

The Finance and Compliance section received and approved applications for self-insured status, examined statutory compliance regarding workers' compensation coverage, and conducted on-site audits. In 2010 within the state, 629 companies were approved to be self-insured. Some 282 insurance companies were authorized to sell workers' compensation insurance.

## INTRODUCTION

### **Vision**

The Louisiana Workforce Commission will be an indispensable provider of workforce solutions.

### **Mission**

The Louisiana Workforce Commission will lead the development of the system that delivers the workforce Louisiana's current and future employers need.

### **Values**

- Excellence
- Trust
- Respect
- Fairness
- Involvement
- Open Communications

§1310.10. Provides that the Louisiana Workforce Commission (LWC), Office of Workers' Compensation Administration (OWCA) shall:

Report to governor, supreme court, and legislature annually, on or before the first day of April, commencing in 1990, the director shall prepare and submit a report for the prior calendar year to the governor, the chief justice of the supreme court, the president of the Senate, the speaker of the House of Representatives, and each member of the legislature, which shall include a statement of the number of awards made and the causes of the accidents leading to the injuries for which the awards were made, total workload data of the workers' compensation judges, a detailed report of the work load of each workers' compensation judge, a detailed statement of the expenses of the offices of the director of workers' compensation and the workers' compensation judges, together with any other matter which the director deems proper to report, including any recommendations he may desire to make.

This 2010 Annual Report includes all of the aforementioned requirements to satisfy §1310.10. Furthermore, the report gives an overview on the progress that the OWCA has made in the last calendar year. It demonstrates its dedication to the LWC's mission to promote workforce development and improve workplace safety and health throughout Louisiana. The report, however does not cover all aspects of what happens in the OWCA, nor is it intended to do so, although all of those elements are important.

More detailed information is available upon request by contacting [owca@lwc.la.gov](mailto:owca@lwc.la.gov).

## OFFICE OF WORKERS' COMPENSATION FUNDING AND EXPENDITURES

The OWCA's sole source of funding is a tax assessment paid by workers' compensation insurance carriers and self-insured. While the fund is considered to be "self-generated" and "dedicated," the OWCA's budget and expenditures are nonetheless subject to legislative oversight and approval.

All insurers and employers that pay Louisiana workers' compensation benefits submit a report annually to the OWCA on a form provided by the OWCA showing the amount of actual Louisiana workers' compensation benefits paid the previous calendar year. It is important to note that this assessment funds the operation of the OWCA, but it does not pay workers' compensation benefits for injured workers.

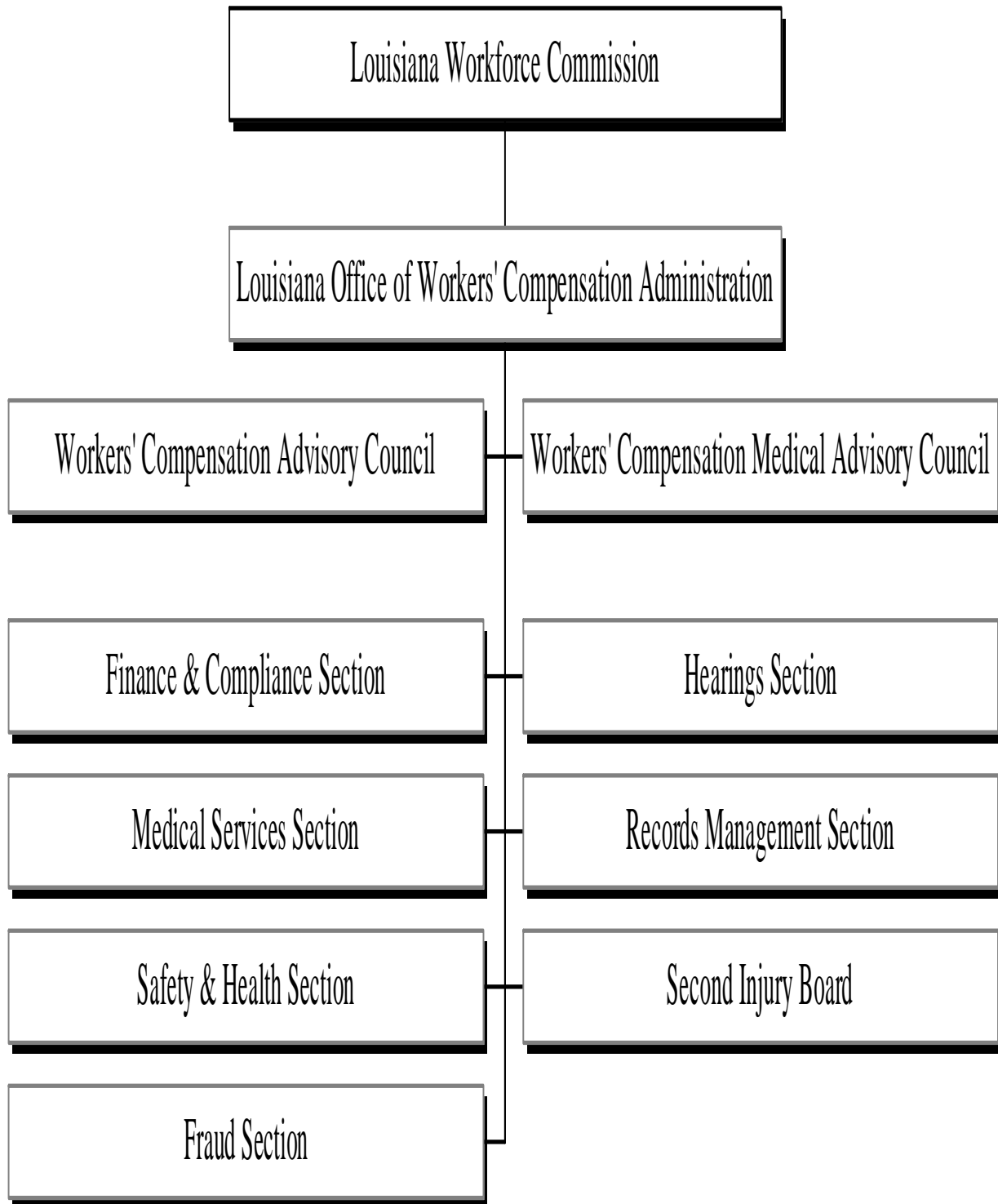
The approved budget for fiscal year (FY) 2010 was \$12,866,631, and the budget includes revenue increases, expenditure reductions, and service restructuring with the intent to deliver the results the public expected. The increases in expenditures are attributed to the office maintaining administrative services levels on most areas and making significant improvements in technology. During 2010, sections within the OWCA continued to "hold the line" in the face of growing state budget deficits.

Table 1 shows that in FY 2010 Salaries accounted for 48 percent and Other Charges accounted for 12 percent for fiscal year 2010. Related Benefits accounted for 17 percent and the remaining 23 percent was Other Compensation, Travel and Planning, Supplies, Professional Services and Capital Outlays.

**Table 1**  
**Estimated Expenditures to Administer the Workers' Compensation Act**  
**Fiscal Years 2006-2010**

Description	Fiscal Year 2006	% of Total	Fiscal Year 2007	% of Total	Fiscal Year 2008	% of Total	Fiscal Year 2009	% of Total	Fiscal Year 2010	% of Total
Salaries	\$ 5,034,364	43	\$ 5,234,555	44	\$ 5,792,920	45	\$ 5,819,214	46	\$ 6,190,146	48
Other Compensation	\$ 88,393	1	\$ 77,818	1	\$ 153,846	1	\$ 166,438	1	\$ 190,127	1
Related Benefits	\$ 1,692,908	15	\$ 1,753,265	15	\$ 1,927,612	15	\$ 1,856,783	15	\$ 2,149,376	17
Travel & Planning	\$ 84,078	1	\$ 144,915	1	\$ 117,993	1	\$ 103,374	1	\$ 84,405	1
Operating Services	\$ 1,122,996	10	\$ 1,258,653	11	\$ 1,490,064	12	\$ 1,521,870	12	\$ 1,381,096	11
Supplies	\$ 85,006	1	\$ 114,523	1	\$ 82,733	1	\$ 87,309	1	\$ 120,783	1
Professional Services	\$ 642,907	6	\$ 902,927	8	\$ 1,087,284	8	\$ 1,056,081	8	\$ 1,115,918	8
Other Charges	\$ 2,084,927	18	\$ 2,125,122	18	\$ 2,114,906	16	\$ 1,920,217	15	\$ 1,566,748	12
Capital Outlay	\$ 588,462	5	\$ 86,250	1	\$ 66,245	1	\$ 132,169	1	\$ 68,032	1
Total Expenditures	\$ 11,424,041	100	\$ 11,698,028	100	\$ 12,833,603	100	\$ 12,663,455	100	\$ 12,866,631	100

**STRUCTURE OF THE OFFICE OF WORKERS' COMPENSATION ADMINISTRATION**





## **ADMINISTRATION**

The OWCA is headquartered in Baton Rouge. Its mission is to ensure a manageable, cost effective workers' compensation system. It is led by a strong administration team that continues to meet the administration's day-to-day challenges with great focus on customer service and many concrete examples of operational efficiencies.

Sections within OWCA:

### **ADMINISTRATIVE SECTION**

---

Wes Hataway, Office of Workers' Compensation Director

The OWCA is headed by a Director who is appointed by and serves at the pleasure of the Governor.

The telephone number for the Administrative section is (225) 342-7561. The FAX number is (225) 342-5665. The email address for the director is [whataway@lwc.la.gov](mailto:whataway@lwc.la.gov).

### **FINANCE AND COMPLIANCE SECTION**

---

Vacant, Manager

The Finance and Compliance section evaluates and approves or disapproves applications for self-insured status, examines statutory compliance regarding workers' compensation coverage, and conducts audits of benefits paid by insurance companies, group self-insured funds and individual self-insurers. This section is also responsible for the calculation and collection of the annual administrative assessment. The administrative assessment for 2010 is \$14,576.41.

The telephone numbers for the Finance and Compliance section are (800) 201-3448 or (225) 342-5658. The FAX number is (225) 342-7578.

### **FRAUD SECTION**

---

Kaye Fournet, Manager

The Fraud section detects and deters workers' compensation fraud and educates the public about the penalties for workers' compensation fraud. It conducts investigations within 30 days of reported workers' compensation fraud. The Fraud Section provides resources to employers and insurers to increase their awareness of potentially fraudulent claims and offers guidance to avoid future instances of fraud. These resources include training seminars, the promotion of the use of written and electronic material, with its nationwide toll-free fraud hotline (800) 201-3362, as well as Internet resources to report suspected fraud directly to the office.

The telephone number for the Fraud section is (225) 342-7558. The FAX number is (225) 342-1880. The email address for its manager is [kfournet@lwc.la.gov](mailto:kfournet@lwc.la.gov).

### **HEARINGS SECTION**

---

Sheral Kellar, Manager and Workers' Compensation Chief Judge

The Hearings section's primary duty is to resolve disputed workers' compensation claims filed with the Office of Workers' Compensation Administration. A claim for benefits, the controversion of entitlement to benefits, or other relief under the Workers' Compensation Act is initiated by filing the appropriate form ([LWC-WC-1008](#)) with the office. There are ten district

offices located statewide: [Alexandria](#), [Baton Rouge](#), [Covington](#), [Harahan](#), [Houma](#), [Lafayette](#), [Lake Charles](#), [Monroe](#), [New Orleans](#), and [Shreveport](#).

The telephone numbers for the main office of the Hearings section are (800) 201-2499 or (225) 342-7970. The FAX number is (225) 342-4790. The email address for its manager is [skellar@lwc.la.gov](mailto:skellar@lwc.la.gov).

## **LEGAL SECTION**

---

The Legal section serves in an advisory capacity to the Director and the office staff in legal matters falling under the jurisdiction of the OWCA. It also represents the OWCA in all matters in which the Director or the office are named. It also represents the State of Louisiana in defending constitutional challenges to the workers' compensation statutes and procedures.

The telephone numbers for the Legal section are (800) 201-3405 or (225) 342-7557. The FAX number is (225) 342-7593.

## **MEDICAL SERVICES SECTION**

---

Sue Newman, R.N., Manager

The Medical Services section enforces the reimbursement schedule, audits specific medical bills, schedules independent medical examinations (IMEs), and reviews files for medical necessity of treatment.

All disputes presented to the section are informally resolved by issuance of a recommendation by the Director of the OWCA.

The telephone numbers for the Medical Services section are (800) 201-2494 or (225) 342-7559. The FAX number is (225) 342-9836. The email address for Medical Services is [snewman@lwc.la.gov](mailto:snewman@lwc.la.gov).

## **RECORDS MANAGEMENT SECTION**

---

Brenda D. Williams, Manager

The Records Management section is a support section for the OWCA. The section publishes the OWCA Annual Report, which highlights accomplishments of the OWCA in a given year and offers statistical information concerning workplace injuries and illnesses. It provides OWCA reporting forms, as well as instructions for their completion, by means of electronic filing on the LWC website ([www.LAWORKS.net](http://www.LAWORKS.net)). The section responds to public record requests. It also serves as a repository for workers' compensation records and oversees the imaging of records of the office. In addition, the section provides copies of those records that are considered public records, whether on microfilm, electronically imaged, or on paper. In 2008 the Records Management section acquired the Occupational Safety and Health (OSH) Unit, which was previously in the Office of Occupational Information Services Division. This unit partners with the U.S. Department of Labor's Bureau of Labor Statistics (BLS) to provide fatality counts and estimates on work-related injuries and illnesses.

The telephone numbers for the Records Management section are (800) 201-3457 or (225) 342-5662. The FAX numbers are (225) 342-7582 and (225) 342-3539. The email address for its manager is [bwilliams@lwc.la.gov](mailto:bwilliams@lwc.la.gov).

## **SECOND INJURY BOARD**

---

Pauline Williams, Director

The Second Injury Board (SIB) is an employer/insurer funded program, whose purpose is to encourage the employment of individuals with pre-existing permanent partial disability that is a hindrance or obstacle to obtaining employment. The SIB promotes the hiring of these individuals by protecting employers/insurers from excess liability for workers' compensation. The SIB reimburses employers/insurers for the medical and compensation costs paid to employees who have met the statutory qualifications and deductibles. The SIB provides an economic incentive to employers to hire or retain individuals with pre-existing disabilities. The SIB provides online claim status to employers and insurers. In addition, the SIB makes electronic fund transfer ([EFT](#)) options available to employers.

The telephone numbers for the Second Injury Board section are (800) 201-2493 or (225) 342-7866. The FAX number is (225) 219-5968. The email address for its director is [pwilliams2@lwc.la.gov](mailto:pwilliams2@lwc.la.gov).

## **WORKPLACE SAFETY SECTION**

---

Vacant, Director

The Workplace Safety section provides voluntary and confidential workplace inspections, on-site training and program assistance to employers in the state. The section administers the Cost Containment Program ([CCP](#)), which offers eligible employers the opportunity to lower their workers' compensation insurance premiums. The section is responsible for distribution and processing of quarterly reports ([LWC-WC-1017A](#)) which identifies employers who are experiencing above-average injuries for their industry classification. The report is due one month from the quarter reported. In addition, the section provides on-site facility inspections to identify hazards and assess program elements to ensure compliance with workplace safety provisions.

The telephone numbers for the Workplace Safety and Consultation section are (800) 201-2495 or (225) 342-9601. The FAX number is (225) 342-5158.

## **WORKERS' COMPENSATION COUNCILS:**

### **WORKERS' COMPENSATION ADVISORY COUNCIL**

---

Wes Hataway, Chairman

The Advisory Council for the Office of Workers' Compensation was created within the Louisiana Workforce Commission pursuant to R.S. 23:1294. The Purpose of the Council is to consult periodically with the director on the efficient administration of the Office of Workers' Compensation. The Advisory Council is comprised of representatives from the general public, business, labor, trial attorneys and the insurance industry. The chairman of the council is the Director of the Office of Workers' Compensation Administration.

The Louisiana Workforce Commission's website, [www.LAWORKS.net](http://www.LAWORKS.net), displays the Workers' Compensation Advisory Council, which includes a listing of 2010 scheduled meetings for the council and locations for each meeting. A list with current members of the council is available on Louisiana government website.

[http://www.legis.state.la.us/boards/board\\_members.asp?board=820](http://www.legis.state.la.us/boards/board_members.asp?board=820).

## **WORKERS' COMPENSATION MEDICAL ADVISORY COUNCIL**

---

The Medical Advisory Council reviews current guidelines and provides recommendations for a medical treatment schedule to guide treatment for workplace illnesses and injuries. It is made up of at least one orthopedic surgeon, neurosurgeon, neurologist, interventional pain management physician, family practice physician, physical and occupational therapists, psychologist and psychiatrists and a representative from the Chiropractic Association of Louisiana. Members of the council are appointed to two-year terms by the director of the state workers' compensation office.

The Louisiana Workforce Commission's website, [www.LAWORKS.net](http://www.LAWORKS.net), displays the Workers' Compensation Medical Council's scheduled meetings and locations.

## OWCA's SECTIONS' ACTIVITY, 2006-2010

The following tables give details of the activities of the OWCA sections for the years 2006-2010:

Section 1 [Workers' Compensation Claims, 2006-2010](#)

Section 2 [Hearings](#)

[Number of Disputed Claims Received by OWCA Offices, 2006-2010](#)

[Number of Mediation Conferences Held by OWCA Offices, 2006-2010](#)

[Number of Trials Held by OWCA Offices, 2006-2010](#)

[Number of Decisions Rendered by OWCA Offices, 2006-2010](#)

[Number of Appeals Filed by OWCA Offices, 2006-2010](#)

[Number of Settlements Approved by OWCA Offices, 2006-2010](#)

Section 3 [Medical Services](#)

[Estimated Amounts for Hospital Outliers \(Special Reimbursements\), 2006-2010](#)

[Estimated Amounts for Medical Reimbursement Disputed Claims, 2006-2010](#)

Section 4 [Records Management, 2006-2010](#)

Section 5 [Second Injury Board, 2006-2010](#)

Section 6 [Workers' Compensation Fraud Claims, 2006-2010](#)

Section 7 [Workplace Safety, 2006-2010](#)

## AN OVERVIEW OF OWCA CLAIMS AND SECTIONS' ACTIVITIES, 2006-2010

<b>WORKERS' COMPENSATION CLAIMS (Section #1)</b>										
Year	Undisputed Claims Processed			Disputed Claims		Claims Closed			Claims Settled	
2006	18,523			5,671		8,781			4,852	
2007	16,150			6,712		5,168			5,279	
2008	14,550			7,691		5,968			4,960	
2009	12,833*			7,562		5,271*			5,007	
2010	11,569 **			5,045		4,512 **			4,382	
<b>HEARINGS (Section # 2)</b>										
Year	Disputed Claims Filed	Mediation Conferences Held		Claims Resolved Prior To Trial	Trials Held	Decisions Rendered	Appeals Filed	Settlements Approved		
2006	5,671	4,586		2,549	1,715	1,469	157	4,852		
2007	6,712	2,544		2,703	2,407	2,309	89	5,279		
2008	7,691	3,219		4,019	2,873	2,548	160	4,960		
2009	7,562	3,955		2,516	1,536	1,508	176	5,007		
2010	5,045	3,674		5,302	3,035	3,054	192	4,382		
<b>Number of Disputed Claims Received by OWCA Offices</b>										
Year	1W Shreveport	1E Monroe	2 Alexandria	3 Lake Charles	4 Lafayette	5 Baton Rouge	6 Covington	7 Harahan	8 New Orleans	9 Houma
2006	525	377	572	726	1,099	404	522	585	465	396
2007	532	386	735	1,475	1,096	676	498	515	395	404
2008	646	365	666	1,603	1,121	1,056	641	694	487	412
2009	845	373	795	747	961	805	739	1,045	728	524
2010	365	289	501	760	590	708	495	499	401	437
<b>Number of Mediation Conferences Held by OWCA Offices</b>										
Year	1W Shreveport	1E Monroe	2 Alexandria	3 Lake Charles	4 Lafayette	5 Baton Rouge	6 Covington	7 Harahan	8 New Orleans	9 Houma
2006	383	378	618	949	432	205	521	230	409	461
2007	276	216	313	309	308	140	293	10	488	191
2008	307	21	592	534	563	64	11	457	454	216
2009	330	236	521	380	497	406	475	457	370	283
2010	287	206	649	373	399	321	368	390	350	331
<b>Number of Trials Held by OWCA Offices</b>										
Year	1W Shreveport	1E Monroe	2 Alexandria	3 Lake Charles	4 Lafayette	5 Baton Rouge	6 Covington	7 Harahan	8 New Orleans	9 Houma
2006	185	149	140	100	237	170	194	31	237	272
2007	209	148	195	180	308	219	173	9	653	312
2008	237	158	237	128	283	191	218	219	690	512
2009	123	69	141	144	184	123	148	148	334	122
2010	108	115	317	192	402	312	464	273	587	265
<b>Number of Decisions Rendered by OWCA Offices</b>										
Year	1W Shreveport	1E Monroe	2 Alexandria	3 Lake Charles	4 Lafayette	5 Baton Rouge	6 Covington	7 Harahan	8 New Orleans	9 Houma
2006	120	127	123	81	215	169	138	23	226	247
2007	164	130	176	277	282	218	134	11	637	279
2008	202	128	230	108	263	191	193	191	778	264
2009	146	61	154	97	169	149	156	154	304	118
2010	44	117	208	189	304	290	439	384	612	269
<b>Number of Appeals Filed by OWCA Offices</b>										
Year	1W Shreveport	1E Monroe	2 Alexandria	3 Lake Charles	4 Lafayette	5 Baton Rouge	6 Covington	7 Harahan	8 New Orleans	9 Houma
2006	15	16	27	27	13	4	33	2	10	10
2007	3	11	16	11	11	0	15	1	13	8
2008	21	19	33	16	17	3	19	4	17	11
2009	16	15	35	16	28	3	11	14	24	14
2010	22	11	41	16	9	27	23	23	15	5
<b>Number of Settlements Approved by OWCA Offices</b>										
Year	1W Shreveport	1E Monroe	2 Alexandria	3 Lake Charles	4 Lafayette	5 Baton Rouge	6 Covington	7 Harahan	8 New Orleans	9 Houma
2006	434	410	562	471	679	661	539	239	438	419
2007	452	401	542	460	726	762	546	205	724	461
2008	461	387	459	468	720	738	506	410	462	349
2009	500	336	521	377	720	828	459	461	406	399
2010	233	362	267	432	631	741	469	508	376	363

## AN OVERVIEW OF OWCA CLAIMS AND SECTIONS' ACTIVITIES, 2006-2010

<b>MEDICAL SERVICES (Section # 3)</b>								
Year	Medical Reimbursements		Independent Medical Exams		Utilization Reviews		Special Reimbursement Consideration Appeal Requests (Outliers)	
2006	1,010		630		129		132	
2007	791		502		125		55	
2008	703		397		141		49	
2009	774		471		145		80	
2010	424		636		153		72	
<b>Estimated Amounts for Hospital Outliers (Special Reimbursements)</b>								
Year	Hospital Outlier Cases		Billed Amounts		Recommended Reimbursements		Estimated Savings	
2006	132		\$6,138,000.00		\$1,889,632.00		\$4,248,368.00	
2007	55		\$3,663,920.00		\$1,448,792.00		\$2,215,128.00	
2008	49		\$3,279,941.00		\$1,793,706.00		\$2,462,515.00	
2009	80		\$5,214,674.45		\$1,464,665.02		\$3,750,009.43	
2010	70		\$4,631,395.25		\$1,998,874.00		\$2,632,521.25	
<b>Estimated Amounts for Medical Reimbursement Disputed Claims</b>								
Year	Disputed Claims		Billed Amounts		Recommended Reimbursements		Estimated Savings	
2006	1,010		\$19,744,600.00		\$2,525,522.00		\$17,219,078.00	
2007	791		\$4,963,907.35		\$3,083,703.01		\$1,880,207.34	
2008	703		\$4,467,933.54		\$3,338,686.79		\$1,121,056.80	
2009	774		\$5,590,330.00		\$4,210,899.00		\$1,377,130.00	
2010	424		\$3,969,253.92		\$2,162,557.28		\$1,806,696.64	
<b>RECORDS MANAGEMENT (Section # 4)</b>								
Year	Forms Reported				Records Requests			
2006	27,408				8,201			
2007	31,502				7,856			
2008	31,796				9,494			
2009	29,716				10,150			
2010	28,178				18,423			
<b>SECOND INJURY BOARD (Section # 5)</b>								
Year	Claims Received	Claims Closed	Decisions Rendered	Claims Pending	Ongoing Claims	Assessment Actual	Reimbursement	Total Administrative Costs
2006	955	891	741	4,162	2,413	\$42,573,324	\$38,540,285	\$809,349
2007	979	951	1,060	3,929	2,223	\$42,447,476	\$41,549,518	\$862,811
2008	957	1,192	947	3,902	2,243	\$42,429,319	\$42,181,211	\$1,081,014
2009	1,037	1,722	1,351	3,208	1,944	\$44,573,893	\$38,419,534	\$1,049,408
2010	981	1,201	1,035	3,281	1,888	\$45,754,077	\$43,690,296	\$1,085,819
<b>WORKERS' COMPENSATION FRAUD CLAIMS (Section # 6)</b>								
Year	Investigations Initiated	Investigations Completed	Referrals for Prosecution	Arrests & Prosecutions	Referrals for U.I. Fraud	Convictions	Percent of Investigations Completed	
2006	2,119	2,070	7	8	42	7	97%	
2007	1,833	1,731	8	6	10	5	94%	
2008	1,987	1,698	4	6	4	1	85%	
2009	3,310	2,944	26	15	16	2	94%	
2010	2,524	2,298	24	11	19	2	91%	
<b>WORKPLACE SAFETY (Section # 7)</b>								
Year	Clients Assisted	Facility/On-site Inspections	Seminars, Training & Speaking Engagements	Number of Safety & Health Hazards Identified	Number of Serious Health Hazards Identified	Consultation Inquiries	Requests Received for Services	
2006	8,430	847	34	1,539	924	508	254	
2007	11,890	1,102	23	1,013	997	415	224	
2008	11,680	599	17	809	699	304	152	
2009	14,293	1,485	38	1,277	472	1,679	267	
2010	15,075	1,127	92	1,035	1,004	1,104	189	

\* Data has been amended

\*\* Preliminary Data

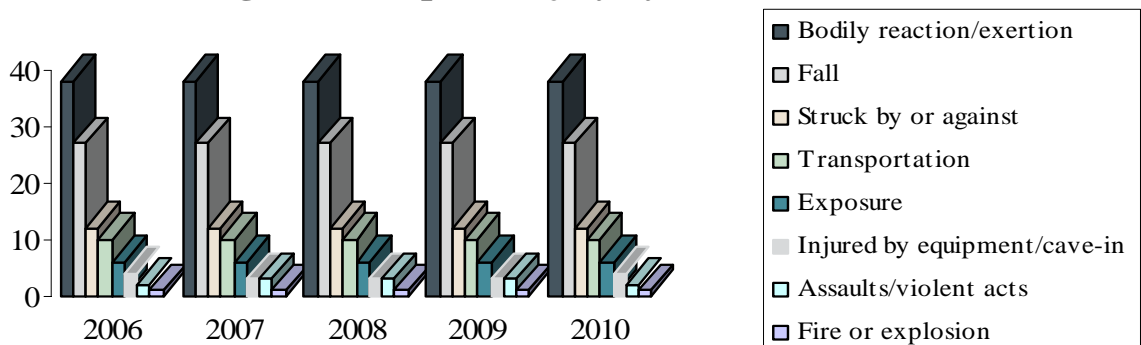
## STATISTICAL REVIEW

For the past five years, the OWCA has been reviewing the manner in which injuries and illness occurred in the workplace. Over a five year period, there were 32,681 disputed workers' compensation cases reviewed for cause of injury and illness. According to the table below, per year, Bodily Reaction/Exertion was cited as having the highest percentage of cases (38). Falls continued to be the second cause of injury exceeded only by Bodily Reaction/Exertion. Per year, twenty-seven percent of the cases reported resulted from falls. More than half of these incidents were falls onto the same level on which the employee had been standing. Although variations occur in four of the categories when compared by year, the data reflects no major shifts in the three most significant types of cause of injuries and illness.

**Percentage of Workplace Injury by Cause, 2006-2010**

Cause of Injury	2006	2007	2008	2009	2010
Bodily Reaction/Exertion	38	38	38	38	38
Fall	27	27	27	27	27
Struck By or Against	12	12	12	12	12
Transportation	10	10	10	10	10
Exposure	6	6	6	6	6
Injured by Equipment/Cave-In	4	3	3	3	4
Assaults/Violent Acts	2	3	3	3	2
Fire or Explosion	1	1	1	1	1

**Percentage of Workplace Injury by Cause, 2006 - 2010**





## WORKPLACE FATALITIES

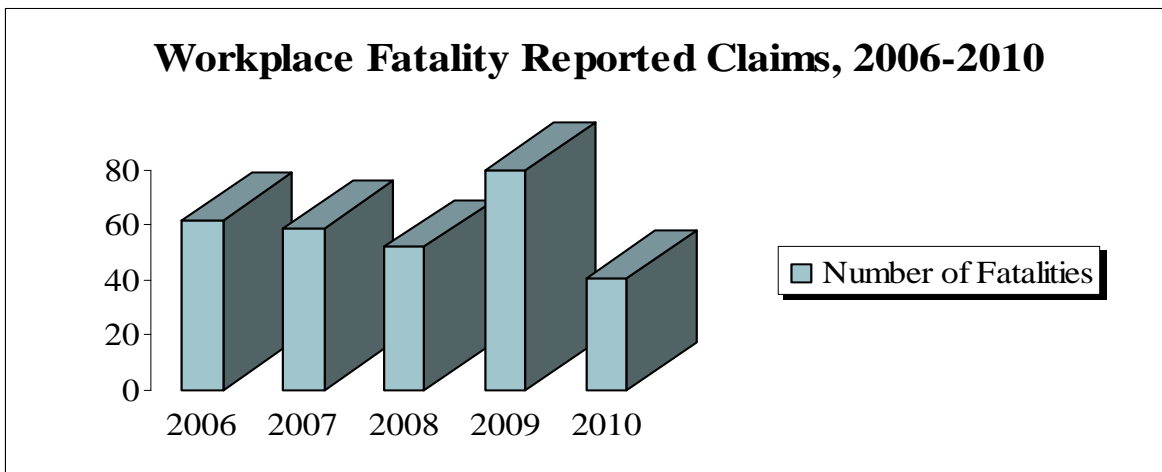
Each year, a small number of workplace fatalities result in the tragic death of workers. Workplace fatalities gradually declined in 2007 and 2008; however, the number of workplace fatalities peaked by 54% in 2009. Fatalities again declined in 2010. The number of workplace fatalities was calculated by using data from the LWC-WC-1007 form.

The information represents workplace fatalities in instances that were reported where:

- death occurred while on the employer's premises and is work-related
- death occurred off the employer's premises and is work-related

**Workplace Fatality Reported Claims, 2006 – 2010**

Year	Number of Fatalities	Percentage of Change from Prior Year
2006	62	-6%
2007	59	-5%
2008	52	-2%
2009	80	54%
2010	41	-49%



## CAUSE OF WORKPLACE FATALITIES

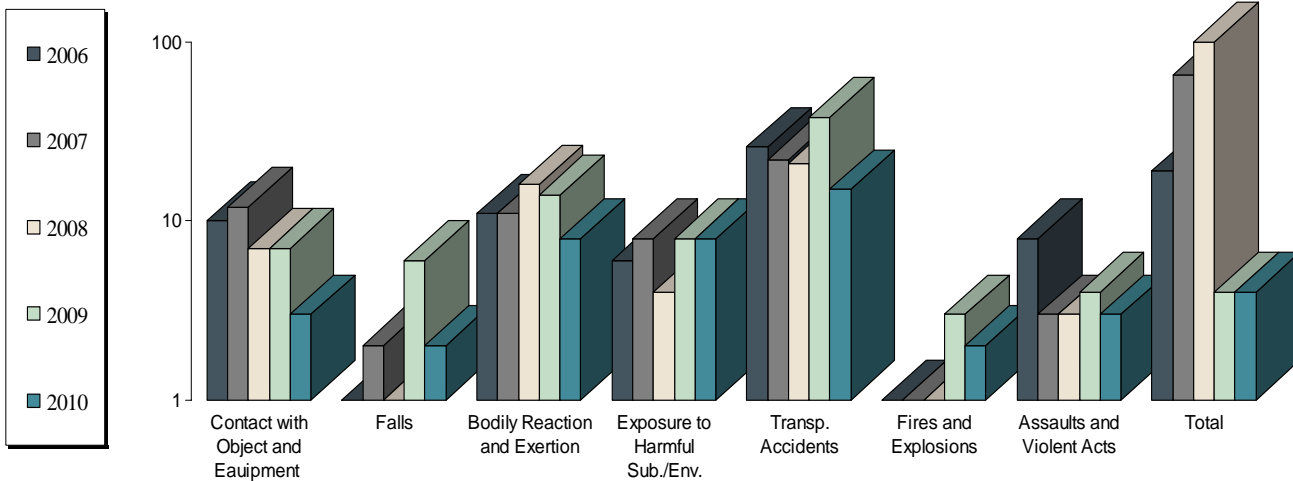
The table below represents the cause of workplace fatalities over a five year period. Bodily Reaction and Exertion, which accounted for 20 percent of the claims, is a non-impact injury primarily associated with lifting and body motions which causes stress or strain to some part of the body. Heart attacks, which are bodily reaction and exertion, accounted for 52 of the 60 claims. Transportation accidents registered the highest claim rates which was 41 percent. The reported number of transportation accidents peaked in 2009, but were much lower in 2007 and 2008 and again in 2010. Nearly half of all transportation accidents were caused by motor vehicles. Over a five year period, motor vehicle accidents accounted for 37 cases and aircraft crashes accounted for 17 cases.

**Cause of Workplace Fatalities, 2006 – 2010**

Year	Contact with Object & Equipment	Falls	Bodily Reaction & Exertion	Exposure to Harmful Substances or Environments	Transportation Accidents	Fires & Explosions	Assaults & Violent Acts
2006	10	0	11	6	26	1	8
2007	12	3	11	8	22	0	3
2008	7	1	16	4	21	0	3
2009	7	6	14	8	38	3	4
2010	3	2	8	8	15	2	3
<b>Total</b>	<b>39</b>	<b>12</b>	<b>60</b>	<b>34</b>	<b>122</b>	<b>6</b>	<b>21</b>

Note: The claims reported are workplace fatalities that are identified through the filings of the LWC-WC-1007 form.

**Cause of Workplace Fatalities 2006 - 2010**



# STATEWIDE DISTRICT DIRECTORY

## **Baton Rouge Administrative Office**

CHIEF JUDGE SHERAL KELLAR  
OFFICE OF WORKERS' COMPENSATION  
P.O. Box 94040  
1001 North 23<sup>rd</sup> Street  
Baton Rouge, Louisiana 70804-9040  
TELEPHONE: (225) 342-7970  
TELEPHONE: (800) 201-2499  
FAX: (225) 342-4790

## **District 1W**

OFFICE OF WORKERS' COMPENSATION  
DISPUTE RESOLUTION SPECIALIST: Vacant  
9234 Linwood  
Shreveport, Louisiana 71106-7001  
TELEPHONE: (318) 676-5331  
TELEPHONE: (800) 209-7173  
FAX: (318) 676-5332

## **District 1E**

OFFICE OF WORKERS' COMPENSATION  
DISPUTE RESOLUTION SPECIALIST: Camelia Antie  
1908 Stubbs  
Monroe, Louisiana 71201-5730  
TELEPHONE: (318) 362-3078  
TELEPHONE: (800) 209-7321  
FAX: (318) 362-3083

## **District 2**

OFFICE OF WORKERS' COMPENSATION  
DISPUTE RESOLUTION SPECIALIST: Jeanette Dodge  
3724 Government Street  
Alexandria, Louisiana 71302-3327  
TELEPHONE: (318) 487-5966  
TELEPHONE: (800) 209-7329  
FAX: (318) 487-5967

## **District 3**

OFFICE OF WORKERS' COMPENSATION  
DISPUTE RESOLUTION SPECIALIST: Deborah Garriet  
4250 Fifth Avenue, Suite 3  
Lake Charles, Louisiana 70607-3812  
TELEPHONE: (337) 475-4882  
TELEPHONE: (888) 768-8745  
FAX: (337) 475-4884

## **District 4**

OFFICE OF WORKERS' COMPENSATION  
DISPUTE RESOLUTION SPECIALIST: Jennifer Meche  
556 Jefferson Street, First Floor  
Lafayette, Louisiana 70501-6947  
TELEPHONE: (337) 262-1057  
TELEPHONE: (800) 209-7174  
FAX: (337) 262-1106

**District 5**

OFFICE OF WORKERS' COMPENSATION  
DISPUTE RESOLUTION SPECIALIST: Audrey Scott  
224 Florida Boulevard, Suite 100  
Baton Rouge, Louisiana 70801-1719  
TELEPHONE: (225) 219-4378  
TELEPHONE: (800) 209-7175  
FAX: (225) 219-4377

**District 6**

OFFICE OF WORKERS' COMPENSATION  
DISPUTE RESOLUTION SPECIALIST: Jonna Schneider  
19374 North Third Street  
Covington, Louisiana 70433-8813  
TELEPHONE: (985) 871-1258  
TELEPHONE: (888) 575-6149  
FAX: (985) 871-1264

**District 7**

OFFICE OF WORKERS' COMPENSATION  
DISPUTE RESOLUTION SPECIALIST: Kenneth Dupre  
880 West Commerce Road, Suite 401  
Harahan, Louisiana 70123-3333  
TELEPHONE: (504) 736-8606  
TELEPHONE: (866) 253-5830  
FAX: (504) 736-8608

**District 8**

OFFICE OF WORKERS' COMPENSATION  
DISPUTE RESOLUTION SPECIALIST: Christine Melford  
1450 Poydras Street, Suite 838  
New Orleans, Louisiana 70112-2001  
TELEPHONE: (504) 568-6952  
TELEPHONE: (800) 209-7232  
FAX: (504) 568-8706

**District 9**

OFFICE OF WORKERS' COMPENSATION  
DISPUTE RESOLUTION SPECIALIST: Debra Duplantis  
8026 Main Street, Suite 404  
Houma, Louisiana 70360-3407  
TELEPHONE: (985) 857-3775  
TELEPHONE: (800) 262-1497  
FAX: (985) 857-3781