

# Louisiana Workforce

## at a glance

Release Date: November 28, 2017

Data For: October 2017

<http://www.laworks.net>

### In This Issue

- 2 Economic Comparison
- 3-4 NSA State & Area Employment
- 5-8 Data Trends (Graphs)
- 9-15 Nonfarm Employment
- 16-17 Unemployment Rates & Civilian Labor Force
- 18 Average Hours & Earnings
- 19 Workforce Development Area Data
- 20-21 Glossary, Data Constraints, Downloads, & Web Links

Louisiana's seasonally adjusted nonfarm employment was estimated at 1,977,700 for October 2017. The figure represents a decrease of 2,800 jobs over the month but an increase of 8,600 jobs over the year. Private sector employment was estimated at 1,657,800, a decrease of 1,800 jobs over the month but a gain of 12,600 jobs over the year.

Over the month the largest gain was seen in the professional and business services sector, which added 4,900 jobs. The increase ends a streak of four straight monthly losses. Financial activities added 900 jobs from September with the real estate and rental and leasing subsector gaining 500 jobs. Education and health services increased by 400 jobs, ending a streak of three consecutive monthly losses. The health care and social assistance subsector rose by 1,400 jobs. Information showed a small increase of 100 jobs. The largest over-the-month loss was seen in construction, which fell by 3,300 jobs. The series has still seen gains over the month in four of the last six months. Leisure and hospitality declined by 2,200 jobs, its largest monthly loss since September 2008. The accommodation and food services subsector declined by 2,400 jobs. Trade, transportation, and utilities lost 1,400 jobs from September and has lost jobs in six of the last seven months. Transportation, warehousing and utilities lost 1,800 jobs while retail trade lost 700. Government dropped by 1,000 jobs with local government losing 900 jobs. Mining and logging declined by 700 jobs, its 30<sup>th</sup> loss in the last 36 months. Manufacturing lost 300 jobs and has lost jobs in four of the last five months. Other services showed 200 fewer jobs than in September.

Over the year the largest gain was seen in the construction sector which added 7,100 jobs. Construction has seen over-the-year gains for 13 consecutive months. Leisure and hospitality showed 4,600 more jobs than last year, as the accommodation and food services subsector gained 3,600 jobs. The education and health services sector rose by 4,400 jobs over the year, with the health care and social assistance subsector gaining 3,800 jobs. Education and health services has added jobs over the year every month beginning in October 2006. Professional and business services increased by 2,800 jobs and has seen over-the-year gains in seven of the last nine months. Other services added 1,400 jobs for its 13<sup>th</sup> straight over-the-year increase. Financial activities added 1,000 jobs from last October and hasn't lost jobs over the year since March. Manufacturing showed a small gain of 100 jobs. The largest decline over the year was seen in trade, transportation, and utilities lost which lost 7,100 jobs for its 24<sup>th</sup> straight over-the-year decrease. The retail trade subsector lost 4,500 jobs while the transportation, warehousing, and utilities subsector lost 4,400 jobs over the year. The government sector lost 4,000 jobs. Both the state government and local government subsectors lost 2,400 jobs. Information showed 1,100 fewer jobs than last year, its 21<sup>st</sup> consecutive month with an over-the-year loss. Mining and logging sector fell by 600 jobs. The series has lost jobs over the year for 34 straight months.

The October 2017 preliminary seasonally adjusted unemployment rate for Louisiana decreased to 4.8 percent from the September 2017 rate of 5.1 percent. The national unemployment rate for October of 2017 decreased to 4.1 percent from the September rate of 4.2 percent. Total unemployment in the state for October was 100,275. The state civilian labor force increased to 2,086,965, with an increase in total employment to 1,986,690.

The October 2017 preliminary seasonally adjusted unemployment rate for Louisiana decreased to 4.8 percent from the September 2017 rate of 5.1 percent. The national unemployment rate for October of 2017 decreased to 4.1 percent from the September rate of 4.2 percent. Total unemployment in the state for October was 100,275. The state civilian labor force increased to 2,086,965, with an increase in total employment to 1,986,690.

Seasonally Adjusted	United States	Louisiana
<b>Civilian Labor Force</b>	<b>OCT 2017</b>	<b>OCT 2017</b>
Labor Force	160,381,000	2,086,965
Employed	153,861,000	1,986,690
Unemployed	6,520,000	100,275
Unemployment Rate	4.1	4.8
<b>Nonfarm Wage and Salary Employment</b>	<b>OCT 2017</b>	<b>OCT 2017</b>
Total Nonfarm	147,010,000	1,977,700
Mining and Logging	717,000	35,100
Construction	6,930,000	149,700
Manufacturing	12,481,000	133,900
Trade, Transportation, and Utilities	27,434,000	380,500
Information	2,716,000	22,000
Financial Activities	8,483,000	93,200
Professional and Business Services	20,870,000	213,500
Education and Health Services	23,254,000	316,300
Leisure and Hospitality	15,979,000	235,900
Other Services	5,785,000	77,700
Government	22,361,000	319,900

### All Employees Average Hours & Earnings

(Not Seasonally Adjusted)

Construction	OCT 2017	OCT 2017
	United States	Louisiana
Average Weekly Earnings	\$ 1,157.78	\$ 1,087.16
Average Weekly Hours	39.8	41.4
Average Hourly Wages	\$ 29.09	\$ 26.26
<b>Manufacturing</b>		
Average Weekly Earnings	\$ 1,102.10	\$ 1,127.41
Average Weekly Hours	41.2	42.9
Average Hourly Wages	\$ 26.75	\$ 26.28

### Louisiana Unemployment Insurance Activities

Claims	OCT 2017
Initial New & Renewals	8,768
Continued Weekly Intrastate Only	64,623
<b>Insured Unemployment Rate</b>	1.1

### United States Consumer Price Index

	OCT 2017
<b>All Urban Consumers</b>	246.7



The civilian labor force and nonfarm **estimates** are prepared according to Bureau of Labor Statistics (BLS) methodology and are comparable with the U.S. and other states' data. For more information, go to page 20.

## Economic Comparison

Seasonally Adjusted	United States			Louisiana		
<b>Civilian Labor Force</b>	<b>OCT 2017</b>	<b>SEPT 2017</b>	<b>OCT 2016</b>	<b>OCT 2017</b>	<b>SEPT 2017</b>	<b>OCT 2016</b>
Labor Force	160,381,000	161,146,000	159,643,000	2,086,965	2,083,328	2,105,475
Employed	153,861,000	154,345,000	151,902,000	1,986,690	1,977,592	1,977,692
Unemployed	6,520,000	6,801,000	7,740,000	100,275	105,736	127,783
Unemployment Rate	4.1	4.2	4.8	4.8	5.1	6.1
<b>Nonfarm Wage and Salary Employment</b>	<b>OCT 2017</b>	<b>SEPT 2017</b>	<b>OCT 2016</b>	<b>OCT 2017</b>	<b>SEPT 2017</b>	<b>OCT 2016</b>
Total Nonfarm	147,010,000	146,749,000	145,006,000	1,977,700	1,980,500	1,969,100
Mining and Logging	717,000	719,000	659,000	35,100	35,800	35,700
Construction	6,930,000	6,919,000	6,743,000	149,700	153,000	142,600
Manufacturing	12,481,000	12,457,000	12,325,000	133,900	134,200	133,800
Trade, Transportation, and Utilities	27,434,000	27,428,000	27,331,000	380,500	381,900	387,600
Information	2,716,000	2,717,000	2,780,000	22,000	21,900	23,100
Financial Activities	8,483,000	8,478,000	8,330,000	93,200	92,300	92,200
Professional and Business Services	20,870,000	20,820,000	20,334,000	213,500	208,600	210,700
Education and Health Services	23,254,000	23,213,000	22,790,000	316,300	315,900	311,900
Leisure and Hospitality	15,979,000	15,873,000	15,695,000	235,900	238,100	231,300
Other Services	5,785,000	5,773,000	5,711,000	77,700	77,900	76,300
Government	22,361,000	22,352,000	22,308,000	319,900	320,900	323,900
<b>All Employees Average Hours &amp; Earnings</b>						
<b>Construction</b>	<b>United States (Not Seasonally Adjusted)</b>			<b>Louisiana (Not Seasonally Adjusted)</b>		
	<b>OCT 2017</b>	<b>SEPT 2017</b>	<b>OCT 2016</b>	<b>OCT 2017</b>	<b>SEPT 2017</b>	<b>OCT 2016</b>
Average Weekly Earnings	\$ 1,157.78	\$ 1,152.45	\$ 1,133.96	\$ 1,087.16	\$ 1,087.99	\$ 1,142.11
Average Weekly Hours	39.8	39.4	39.9	41.4	41.4	42.6
Average Hourly Wages	\$ 29.09	\$ 29.25	\$ 28.42	\$ 26.26	\$ 26.28	\$ 26.81
<b>Manufacturing</b>						
Average Weekly Earnings	\$ 1,102.10	\$ 1,086.91	\$ 1,078.71	\$ 1,127.41	\$ 1,135.25	\$ 1,077.93
Average Weekly Hours	41.2	40.8	41.0	42.9	43.9	41.3
Average Hourly Wages	\$ 26.75	\$ 26.64	\$ 26.31	\$ 26.28	\$ 25.86	\$ 26.10
<b>Louisiana Unemployment Insurance Activities</b>						
<b>Claims</b>		<b>OCT 2017</b>	<b>SEPT 2017</b>	<b>OCT 2016</b>	<b>% Change From</b>	
Initial New & Renewals		8,768	8,016	11,204	SEPT 2017	OCT 2016
Continued Weekly Intrastate Only		64,623	56,471	71,311	14.4	-9.4
<b>Insured Unemployment Rate*</b>		1.1	1.2	1.4	-6.7	-20.0
*Insured unemployment rate is for the week including the 12th of the month.						
<b>United States Consumer Price Index (Not Seasonally Adjusted)</b>						
	<b>OCT 2017</b>	<b>% Change From:</b>		<b>SEPT 2017</b>	<b>% Change From:</b>	
	<b>Index</b>	<b>Prior Month</b>	<b>Prior Year</b>	<b>Index</b>	<b>Prior Month</b>	<b>Prior Year</b>
<b>All Urban Consumers</b>	246.7	-0.1	2.0	246.8	0.5	2.2

STATEWIDE

Louisiana's total nonfarm not seasonally adjusted employment was estimated at 1,992,000 for October 2017. The estimate represents a gain of 11,200 jobs over the month and an increase of 9,200 jobs from October 2016. The series has gained jobs over the year for six consecutive months.

The total private employment figure was estimated at 1,667,900 in October 2017. Private sector employment showed an over-the-month increase of 8,800 jobs and a gain of 13,300 jobs from October 2016. This series has added jobs over the year for six straight months.

Over the month the largest increase was seen the professional and business services sector which added 6,100 jobs. That is the largest movement in the series since February 2013 and the second highest level of employment in the series history. Government rose by 2,400 jobs as local government added 1,800 jobs. Education and health services added 2,100 jobs with the health care and social assistance subsector adding 1,700 jobs. The 319,100 jobs in education and health services is a series high. Manufacturing added 1,200 jobs from September, ending a streak of three straight losses, with non-durable goods increasing by 800 jobs. Trade, transportation, and utilities added 200 jobs despite the transportation, warehousing, and utilities subsector losing 1,300 jobs. Information also added 200 jobs while other services gained 100 jobs. The largest decline over the month was seen in the leisure and hospitality sector which dropped by 1,200 jobs. It is the fourth consecutive monthly loss in the series, as food services and drinking places lost 1,300 jobs. Mining and logging showed 400 fewer jobs than in September while construction fell by 300 jobs.

The largest over-the-year gain was seen in the construction sector which added 7,500 jobs. This is its 10<sup>th</sup> consecutive month with an over-the-year gain, led by a 7,600 job increase in construction of buildings. Heavy and civil engineering construction also added 3,000 jobs. Leisure and hospitality added 4,600 jobs with the food services and drinking places subsector increasing by 2,600 jobs. It is the fifth consecutive over-the-year increase in the series. Education and health services added 4,400 jobs over the year and has added jobs over the year every month beginning with the October 2006 figure. Health care and social assistance was responsible for 3,800 of the 4,400 jobs gained, while education services rose by 600. Professional and business services added 3,000 jobs, its fifth increase in the last six months. Other services increased by 1,400 jobs for its ninth straight over-the-year gain. Financial activities added 1,000 jobs from last year and has not lost jobs over the year since March. Manufacturing showed a slight gain of 100 jobs. The largest decline over the year was seen in the trade, transportation, and utilities sector, which declined by 7,100 jobs, its 25<sup>th</sup> straight over-the-year loss. The transportation, warehousing and utilities subsector lost 4,400 jobs while retail trade lost 4,500 jobs. Government lost 4,100 jobs with state government falling by 2,500. The government figure is the lowest for October in series history and the 17<sup>th</sup> straight over-the-year loss. Information lost 1,100 jobs over the year, its 21<sup>st</sup> straight over-the-year loss. The mining and logging sector declined by 500 jobs from last year. Mining and logging has lost jobs over the year for 34 consecutive months

ALEXANDRIA

Total nonfarm employment for the Alexandria MSA was estimated at 62,700 for October 2017. This estimate shows a gain of 300 jobs over the month but a loss of 700 jobs over the year. The MSA has dropped jobs over the year for 15 consecutive months. Trade, transportation, and utilities lost 600 jobs over the year.

BATON ROUGE

Total nonfarm employment for the Baton Rouge MSA was estimated at 413,600 for October 2017. The estimate shows a gain of 1,700 jobs over the month and an increase of 4,200 jobs over the year. The over-the-year gain is the 10<sup>th</sup> in a row. Over the month, professional and business services added 700 jobs and trade, transportation, and utilities gained 600 jobs. Over the year, leisure and hospitality added 1,600 jobs and construction added 800 jobs. Trade, transportation, and utilities dropped by 1,100 jobs, its 13<sup>th</sup> consecutive loss over the year.

### HAMMOND

The Hammond MSA total nonfarm employment was estimated at 46,100 for October 2017. This figure shows a gain of 500 jobs over the month and a gain of 800 jobs over the year. Goods producing employment showed a gain of 100 over the month and no change over the year. Service providing employment added 400 jobs over the month and added 800 jobs over the year.

### HOUMA

Total nonfarm employment in the Houma MSA was estimated at 85,900 for October 2017. This shows a gain of 300 jobs over the month but a decline of 1,700 jobs over the year. Trade, transportation, and utilities lost 2,900 jobs over the year. Mining and logging lost 200 jobs over the year, its 33<sup>rd</sup> consecutive month with an over-the-year loss.

### LAFAYETTE

Total nonfarm employment for the Lafayette MSA was estimated at 199,400 for October 2017. This shows a gain of 400 jobs over the month but a loss of 700 jobs over the year. The MSA has lost jobs over the year for 33 consecutive months. Over the month, government added 500 jobs, while mining and logging, construction, and trade, transportation, and utilities all lost 200 jobs. Over the year, manufacturing added 700 jobs while leisure and hospitality increased by 400. Mining and logging lost 800 jobs over the year for its 34<sup>th</sup> consecutive month with an over-the-year loss. Professional and business services lost 400 jobs, its 32<sup>nd</sup> consecutive loss.

### LAKE CHARLES

Total nonfarm employment for the Lake Charles MSA was estimated at 116,700 for October 2017. This shows a gain of 1,600 jobs over the month and a gain of 4,700 jobs over the year. It is the 76<sup>th</sup> consecutive month with an over-the-year increase and a new series high. The construction sector showed a gain of 900 jobs over the month and added 3,600 jobs over the year. This is construction's 25<sup>th</sup> consecutive month with an over-the-year increase. Leisure and hospitality added 500 jobs over the year.

### MONROE

Total nonfarm employment for the Monroe MSA was estimated at 80,300 for October 2017. This shows a gain of 1,000 jobs over the month and a gain of 500 jobs over the year. Government added 300 jobs over the month. Leisure and hospitality added 200 jobs over the year while government lost 500 jobs over the year, as state government lost 400 jobs.

### NEW ORLEANS

Total nonfarm employment for the New Orleans MSA was estimated at 578,800 for October 2017. This shows a gain of 2,900 jobs over the month and a gain of 400 jobs over the year. Over the month, professional and business services added 1,700 jobs. Over the year, professional and business services added 3,200 jobs while construction increased by 1,400 and manufacturing added 800 jobs. Government lost 2,900 jobs over the year as local government showed 2,400 fewer jobs than last year. Financial activities lost 1,000 jobs over the year.

### SHREVEPORT

Total nonfarm employment for the Shreveport MSA was estimated at 178,100 for October 2017. This shows a loss of 400 jobs over the month and a loss of 2,600 jobs over the year. This is the 30<sup>th</sup> consecutive month with an over-the-year loss. Over the month, education and health services added 400 jobs. Over the year government declined by 1,300 jobs, mining and logging lost 600 jobs, and professional and business services lost 500 jobs.

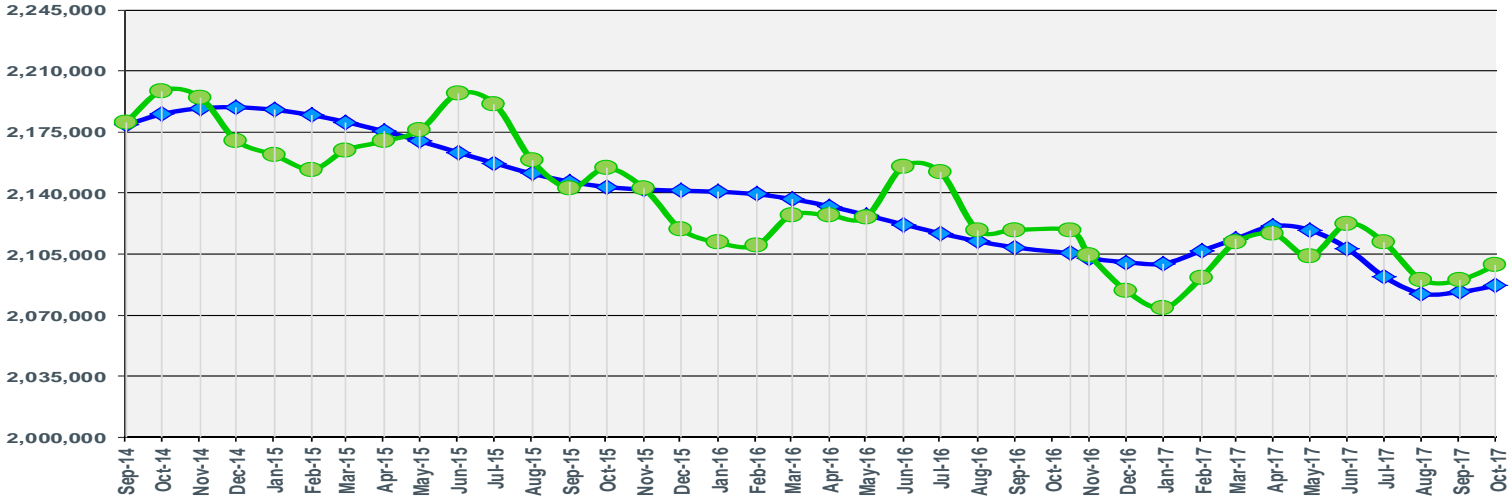
**October 2017**

**Seasonally Adjusted**  
 2,086,965  
 Over the Month: 3,637  
 Over the Year: -18,510

**Louisiana Civilian Labor Force**

**Not Seasonally Adjusted**  
 2,098,942  
 Over the Month: 8,820  
 Over the Year: -19,534

Seasonally Adjusted Not Seasonally Adjusted



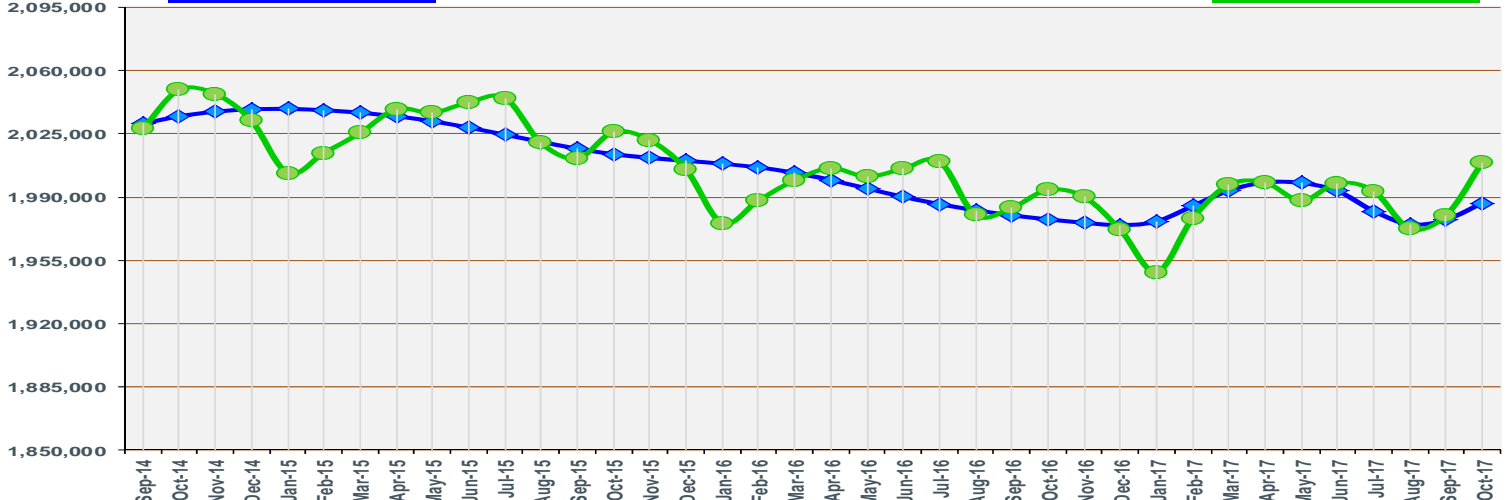
**October 2017**

**Seasonally Adjusted**  
 1,986,690  
 Over the Month: 9,098  
 Over the Year: 8,998

**Louisiana Civilian Labor Force Employment**

**Not Seasonally Adjusted**  
 2,009,107  
 Over the Month: 29,100  
 Over the Year: 15,113

Seasonally Adjusted Not Seasonally Adjusted



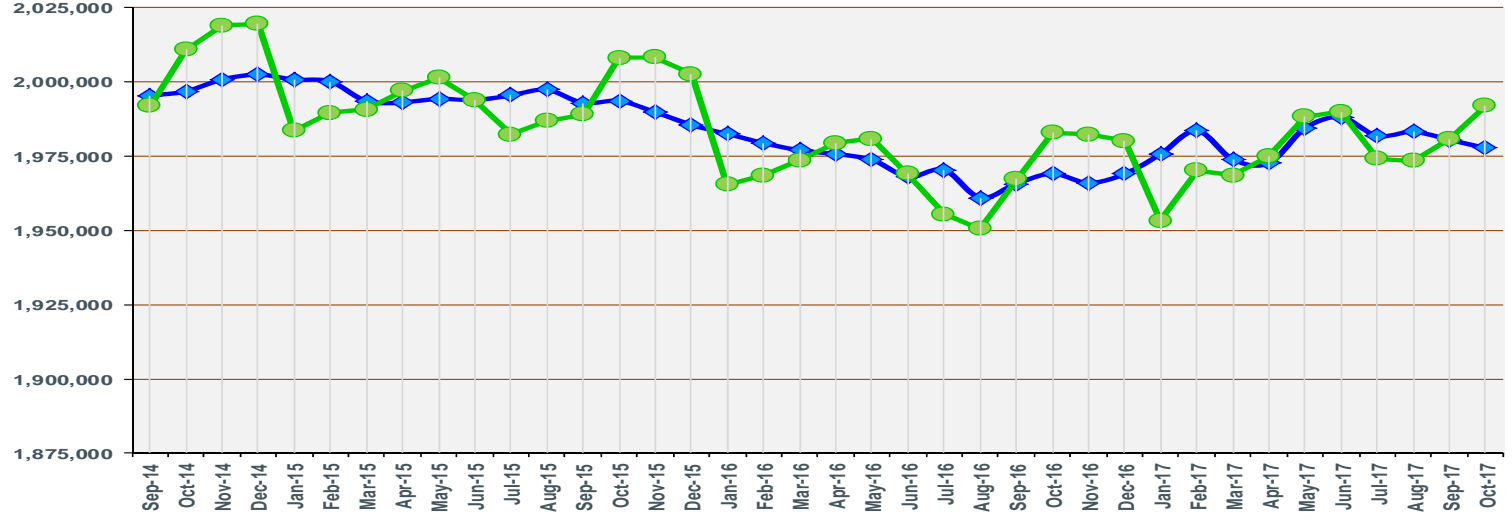
**October 2017**

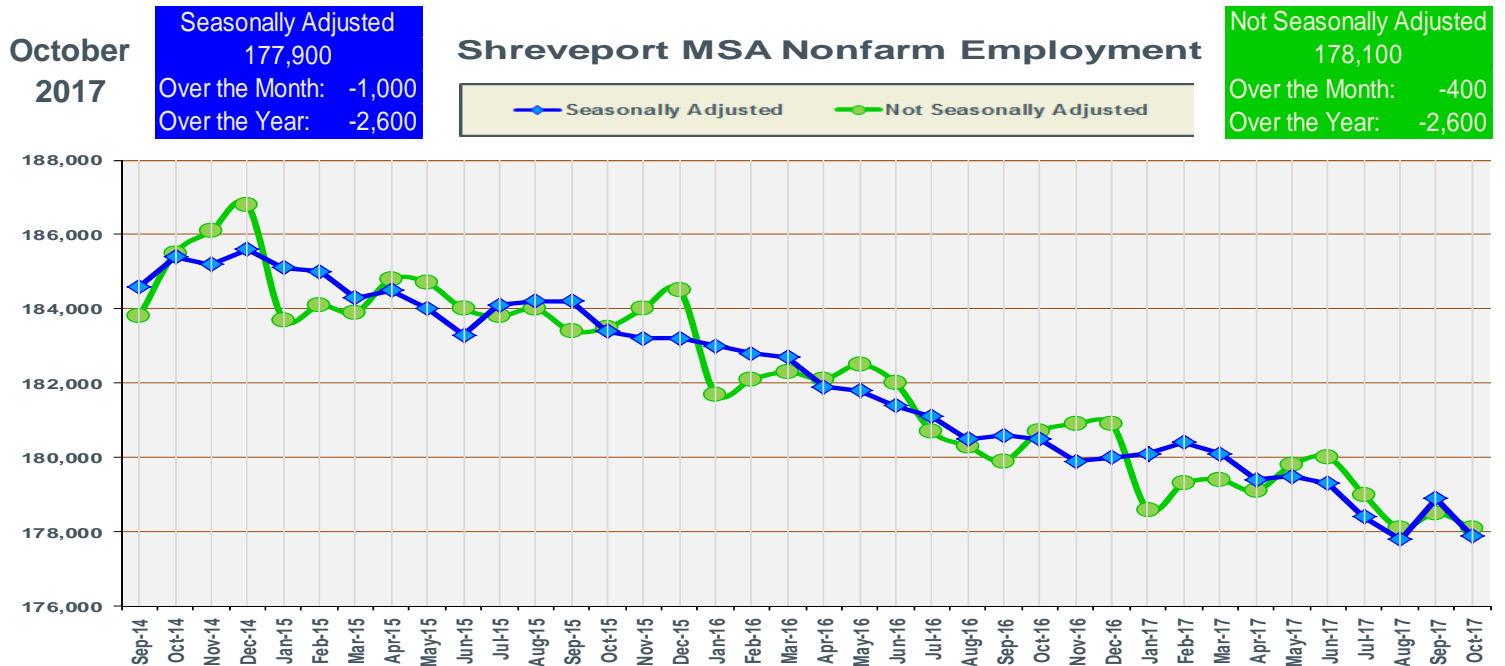
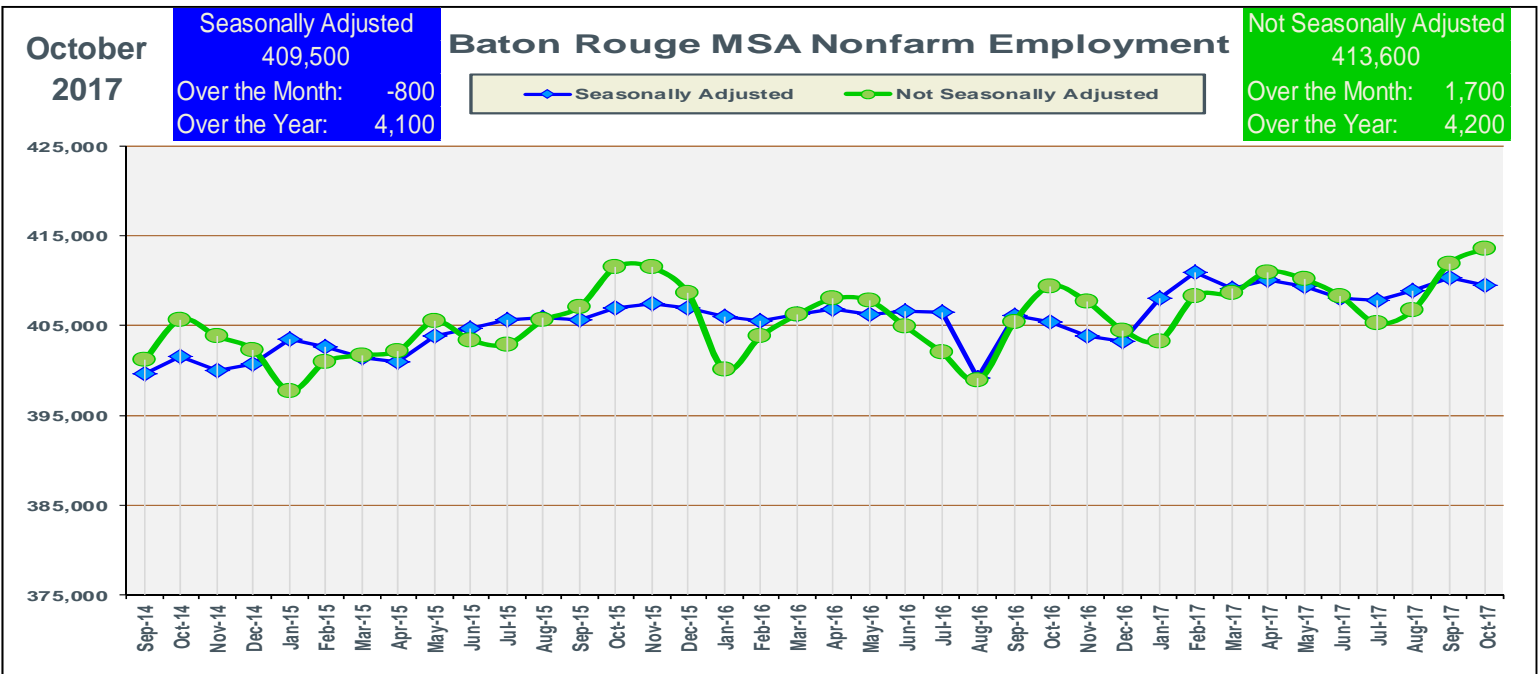
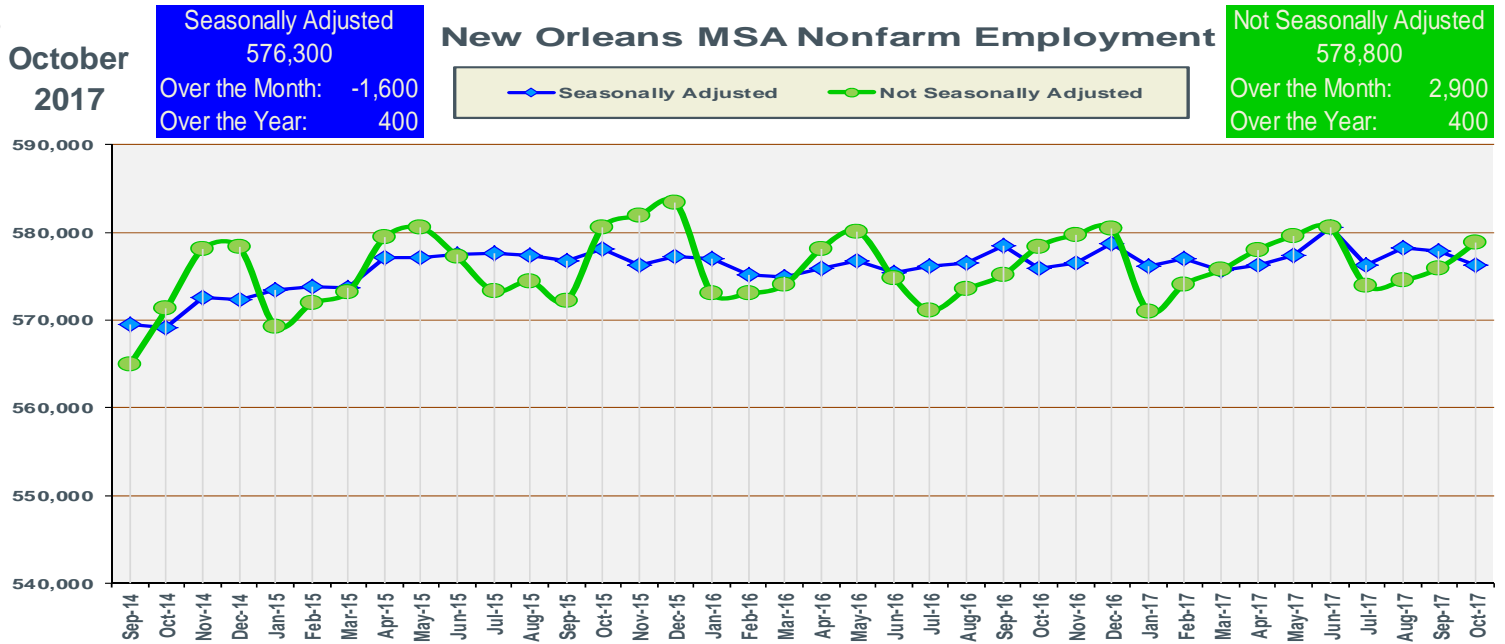
**Seasonally Adjusted**  
 1,977,700  
 Over the Month: -2,800  
 Over the Year: 8,600

**Louisiana Nonfarm Employment**

**Not Seasonally Adjusted**  
 1,992,000  
 Over the Month: 11,200  
 Over the Year: 9,200

Seasonally Adjusted Not Seasonally Adjusted





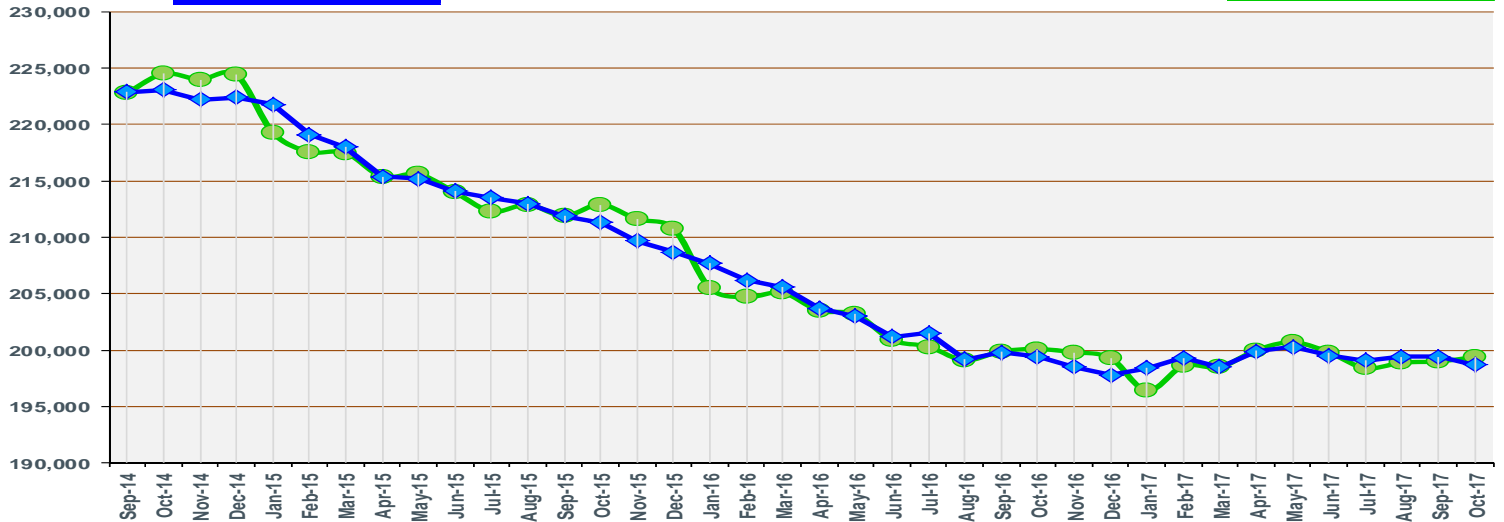
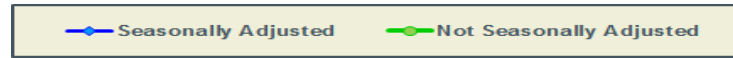


**October  
2017**

**Seasonally Adjusted**  
198,700  
Over the Month: -700  
Over the Year: -700

**Lafayette MSA Nonfarm Employment**

**Not Seasonally Adjusted**  
199,400  
Over the Month: 400  
Over the Year: -700

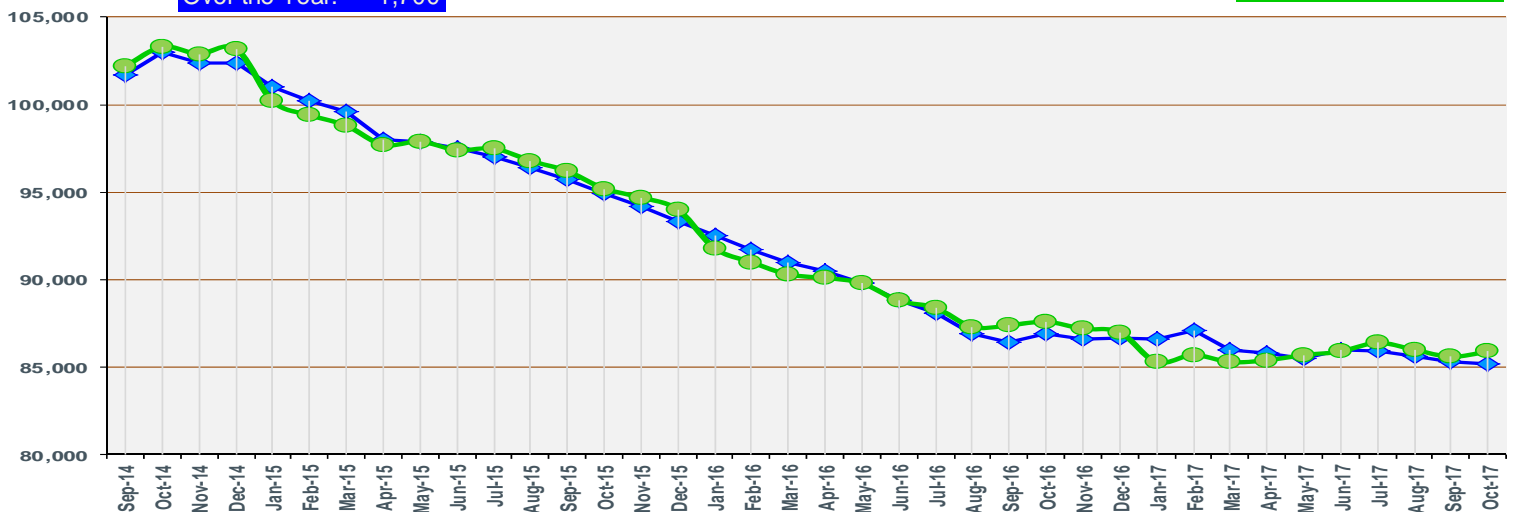
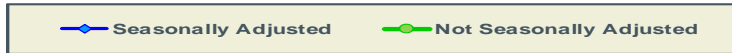


**October  
2017**

**Seasonally Adjusted**  
85,200  
Over the Month: -100  
Over the Year: -1,700

**Houma MSA Nonfarm Employment**

**Not Seasonally Adjusted**  
85,900  
Over the Month: 300  
Over the Year: -1,700

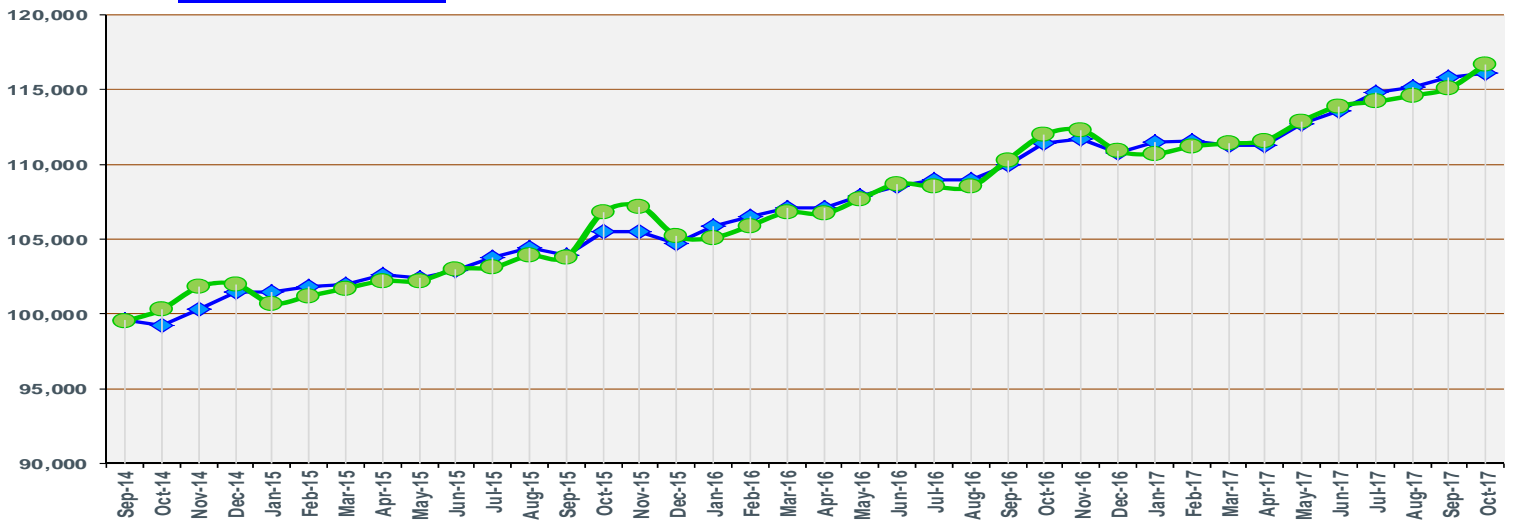
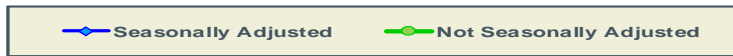


**October  
2017**

**Seasonally Adjusted**  
116,100  
Over the Month: 300  
Over the Year: 4,700

**Lake Charles MSA Nonfarm Employment**

**Not Seasonally Adjusted**  
116,700  
Over the Month: 1,600  
Over the Year: 4,700

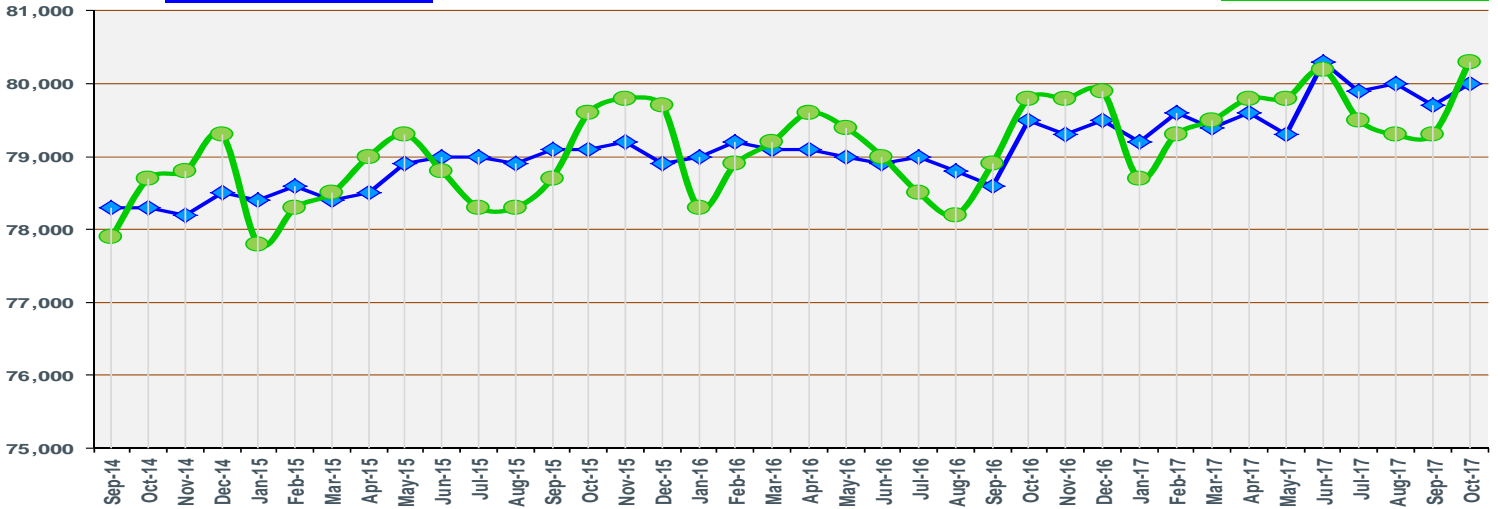


**October 2017**

**Seasonally Adjusted**  
 80,000  
 Over the Month: 300  
 Over the Year: 500

**Monroe MSA Nonfarm Employment**

**Not Seasonally Adjusted**  
 80,300  
 Over the Month: 1,000  
 Over the Year: 500

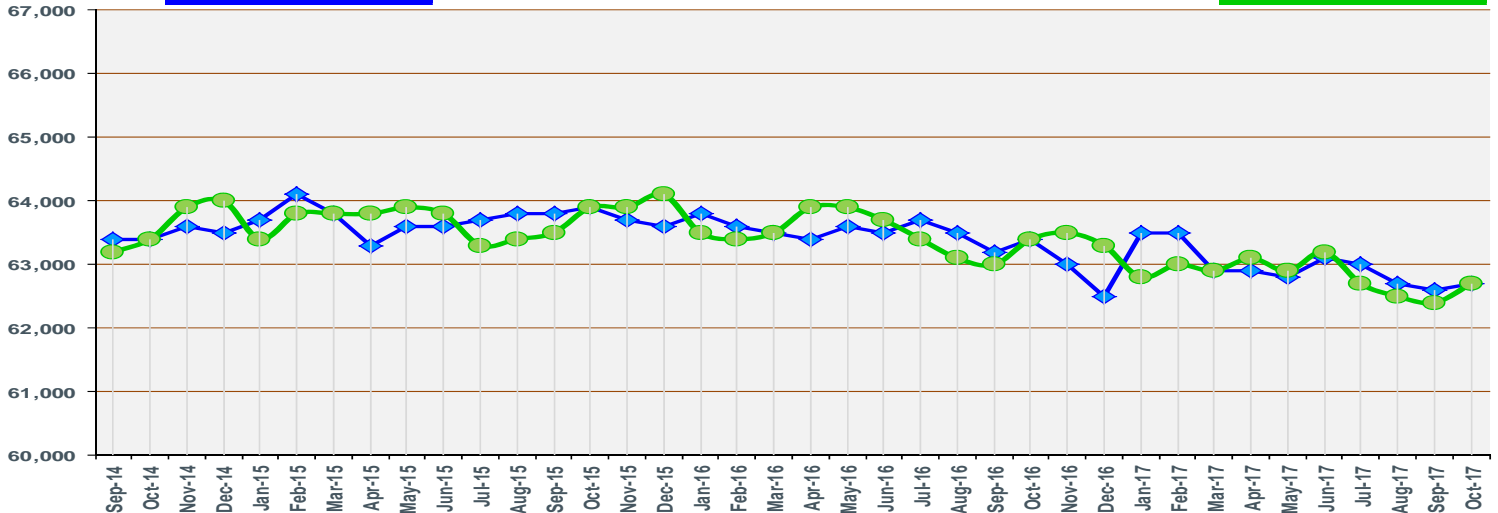
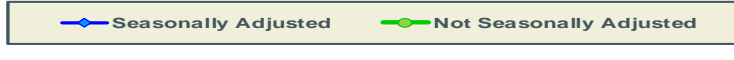


**October 2017**

**Seasonally Adjusted**  
 62,700  
 Over the Month: 100  
 Over the Year: -700

**Alexandria MSA Nonfarm Employment**

**Not Seasonally Adjusted**  
 62,700  
 Over the Month: 300  
 Over the Year: -700

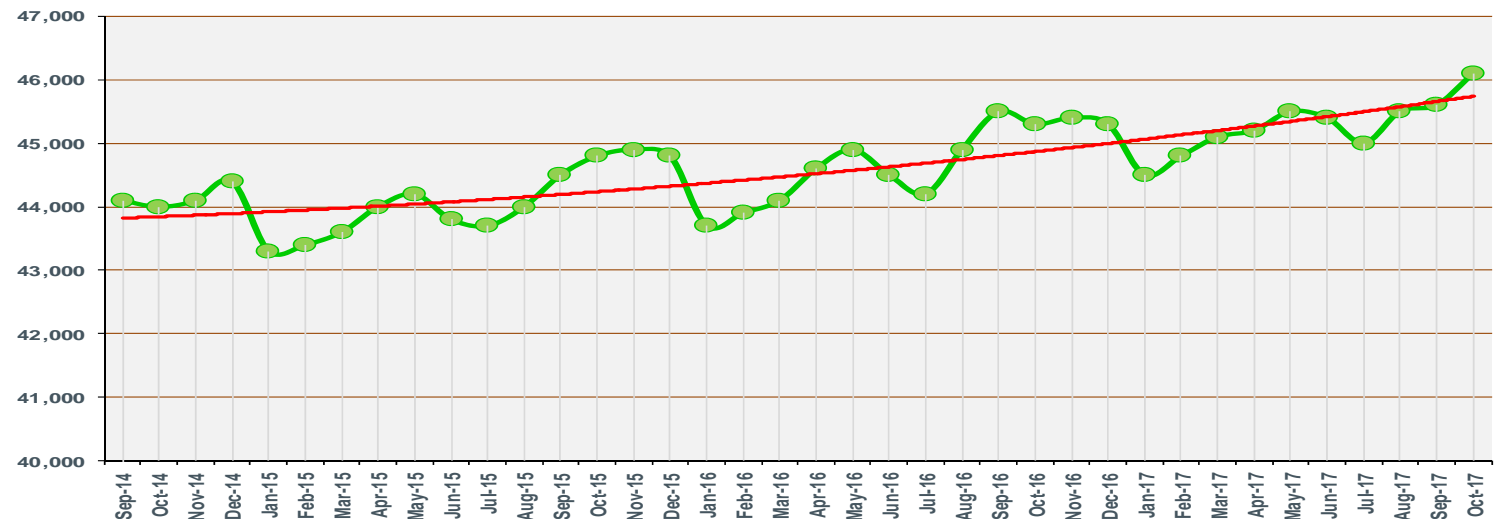


**October 2017**

The Bureau of Labor Statistics is not currently publishing Seasonally Adjusted for this MSA.

**Hammond MSA Nonfarm Employment**

**Not Seasonally Adjusted**  
 46,100  
 Over the Month: 500  
 Over the Year: 800





<i>Louisiana - Seasonally Adjusted</i>	Prel.	Rev.		OTM	OTM	OTY	OTY
	Oct 2017	Sept 2017	Oct 2016	Change	% Change	Change	% Change
Total Nonfarm	1,977,700	1,980,500	1,969,100	-2,800	-0.14%	8,600	0.44%
Total Private	1,657,800	1,659,600	1,645,200	-1,800	-0.11%	12,600	0.77%
Goods-Producing	318,700	323,000	312,100	-4,300	-1.33%	6,600	2.11%
Mining and Logging	35,100	35,800	35,700	-700	-1.96%	-600	-1.68%
Mining, Logging, and Construction	184,800	188,800	178,300	-4,000	-2.12%	6,500	3.65%
Construction	149,700	153,000	142,600	-3,300	-2.16%	7,100	4.98%
Manufacturing	133,900	134,200	133,800	-300	-0.22%	100	0.07%
Durable Goods	62,900	62,700	63,100	200	0.32%	-200	-0.32%
Nondurable Goods	71,000	71,500	70,700	-500	-0.70%	300	0.42%
Service-Providing	1,659,000	1,657,500	1,657,000	1,500	0.09%	2,000	0.12%
Private Service-Providing	1,339,100	1,336,600	1,333,100	2,500	0.19%	6,000	0.45%
Trade, Transportation, and Utilities	380,500	381,900	387,600	-1,400	-0.37%	-7,100	-1.83%
Wholesale Trade	72,000	70,900	70,200	1,100	1.55%	1,800	2.56%
Retail Trade	230,700	231,400	235,200	-700	-0.30%	-4,500	-1.91%
Transportation, Warehousing, and Utilities	77,800	79,600	82,200	-1,800	-2.26%	-4,400	-5.35%
Information	22,000	21,900	23,100	100	0.46%	-1,100	-4.76%
Financial Activities	93,200	92,300	92,200	900	0.98%	1,000	1.08%
Real Estate and Rental and Leasing	30,100	29,600	29,800	500	1.69%	300	1.01%
Professional and Business Services	213,500	208,600	210,700	4,900	2.35%	2,800	1.33%
Professional, Scientific, and Technical Services	83,700	82,400	84,400	1,300	1.58%	-700	-0.83%
Management of Companies and Enterprises	22,800	22,900	22,900	-100	-0.44%	-100	-0.44%
Admin. and Support and Waste Mgmt. and Remediation Serv.	107,000	103,300	103,400	3,700	3.58%	3,600	3.48%
Education and Health Services	316,300	315,900	311,900	400	0.13%	4,400	1.41%
Educational Services	47,400	48,400	46,800	-1,000	-2.07%	600	1.28%
Health Care and Social Assistance	268,900	267,500	265,100	1,400	0.52%	3,800	1.43%
Leisure and Hospitality	235,900	238,100	231,300	-2,200	-0.92%	4,600	1.99%
Arts, Entertainment, and Recreation	30,300	30,100	29,300	200	0.66%	1,000	3.41%
Accommodation and Food Services	205,600	208,000	202,000	-2,400	-1.15%	3,600	1.78%
Other Services	77,700	77,900	76,300	-200	-0.26%	1,400	1.83%
Government	319,900	320,900	323,900	-1,000	-0.31%	-4,000	-1.23%
Federal Government	31,700	31,400	30,900	300	0.96%	800	2.59%
State Government	84,500	84,900	86,900	-400	-0.47%	-2,400	-2.76%
Local Government	203,700	204,600	206,100	-900	-0.44%	-2,400	-1.16%
<i>MSAs - Seasonally Adjusted</i>	Prel. Oct 2017	Rev. Sept 2017	Oct 2016	OTM Change	OTM % Change	OTY Change	OTY % Change
Alexandria Total Nonfarm	62,700	62,600	63,400	100	0.16%	-700	-1.10%
Baton Rouge Total Nonfarm	409,500	410,300	405,400	-800	-0.19%	4,100	1.01%
Houma Total Nonfarm	85,200	85,300	86,900	-100	-0.12%	-1,700	-1.96%
Lafayette Total Nonfarm	198,700	199,400	199,400	-700	-0.35%	-700	-0.35%
Lake Charles Total Nonfarm	116,100	115,800	111,400	300	0.26%	4,700	4.22%
Monroe Total Nonfarm	80,000	79,700	79,500	300	0.38%	500	0.63%
New Orleans Total Nonfarm	576,300	577,900	575,900	-1,600	-0.28%	400	0.07%
Shreveport Total Nonfarm	177,900	178,900	180,500	-1,000	-0.56%	-2,600	-1.44%

<i>Louisiana - Not Seasonally Adjusted</i>	Prel.	Rev.		OTM	OTM	OTY	OTY
	Oct	Sept	Oct	Change	%	Change	%
	2017	2017	2016		Change		Change
Total Nonfarm	1,992,000	1,980,800	1,982,800	11,200	0.57%	9,200	0.46%
Total Private	1,667,900	1,659,100	1,654,600	8,800	0.53%	13,300	0.80%
Goods-Producing	326,500	326,000	319,400	500	0.15%	7,100	2.22%
Mining & Logging	36,000	36,400	36,500	-400	-1.10%	-500	-1.37%
Oil & Gas Extraction	7,800	7,700	7,800	100	1.30%	0	0.00%
Crude Petroleum & Natural Gas Extraction	6,100	6,100	7,100	0	0.00%	-1,000	-14.08%
Support Activities for Mining	24,100	24,300	24,700	-200	-0.82%	-600	-2.43%
Drilling Oil & Gas Wells	2,700	2,700	2,800	0	0.00%	-100	-3.57%
Mining, Logging, & Construction	191,100	191,800	184,100	-700	-0.36%	7,000	3.80%
Construction	155,100	155,400	147,600	-300	-0.19%	7,500	5.08%
Construction of Buildings	39,700	40,300	32,100	-600	-1.49%	7,600	23.68%
Residential Building Construction	5,600	5,700	5,600	-100	-1.75%	0	0.00%
Nonresidential Building Construction	34,100	34,600	26,500	-500	-1.45%	7,600	28.68%
Heavy & Civil Engineering Construction	51,800	52,200	48,800	-400	-0.77%	3,000	6.15%
Specialty Trade Contractors	63,600	62,900	66,700	700	1.11%	-3,100	-4.65%
Manufacturing	135,400	134,200	135,300	1,200	0.89%	100	0.07%
Durable Goods	62,900	62,500	63,100	400	0.64%	-200	-0.32%
Transportation Equipment Manufacturing	8,700	8,800	9,700	-100	-1.14%	-1,000	-10.31%
Ship & Boat Building	6,200	6,200	6,100	0	0.00%	100	1.64%
Nondurable Goods	72,500	71,700	72,200	800	1.12%	300	0.42%
Food Manufacturing	16,400	15,800	16,800	600	3.80%	-400	-2.38%
Paper Manufacturing	6,900	6,900	7,000	0	0.00%	-100	-1.43%
Petroleum & Coal Products Manufacturing	11,800	11,700	11,800	100	0.85%	0	0.00%
Chemical Manufacturing	25,700	25,600	25,500	100	0.39%	200	0.78%
Basic Chemical Manufacturing	13,800	13,800	13,600	0	0.00%	200	1.47%
Service-Providing	1,665,500	1,654,800	1,663,400	10,700	0.65%	2,100	0.13%
Private Service-Providing	1,341,400	1,333,100	1,335,200	8,300	0.62%	6,200	0.46%
Trade, Transportation, & Utilities	379,100	378,900	386,200	200	0.05%	-7,100	-1.84%
Wholesale Trade	72,200	71,200	70,400	1,000	1.40%	1,800	2.56%
Merchant Wholesalers, Durable Goods	38,000	37,600	36,500	400	1.06%	1,500	4.11%
Merchant Wholesalers, Nondurable Goods	25,100	25,100	25,400	0	0.00%	-300	-1.18%
Retail Trade	229,500	229,000	234,000	500	0.22%	-4,500	-1.92%
Motor Vehicle & Parts Dealers	30,000	30,200	29,700	-200	-0.66%	300	1.01%
Building Material & Garden Equipment & Supplies Dealers	20,300	20,500	20,300	-200	-0.98%	0	0.00%
Food & Beverage Stores	39,700	39,500	39,400	200	0.51%	300	0.76%
Grocery Stores	35,400	35,400	34,800	0	0.00%	600	1.72%
Health & Personal Care Stores	17,100	17,000	17,100	100	0.59%	0	0.00%
Gasoline Stations	20,200	20,200	20,100	0	0.00%	100	0.50%
Clothing and Clothing Accessories Stores	17,900	17,100	18,000	800	4.68%	-100	-0.56%
General Merchandise Stores	56,900	56,700	55,600	200	0.35%	1,300	2.34%
Department Stores	10,100	9,800	10,700	300	3.06%	-600	-5.61%
Transportation, Warehousing, & Utilities	77,400	78,700	81,800	-1,300	-1.65%	-4,400	-5.38%
Transportation and Warehousing	68,900	70,100	73,400	-1,200	-1.71%	-4,500	-6.13%
Truck Transportation	16,700	16,700	16,900	0	0.00%	-200	-1.18%
Support Activities for Transportation	18,100	18,500	18,800	-400	-2.16%	-700	-3.72%

<i>Louisiana - Not Seasonally Adjusted</i>	Prel.	Rev.		OTM	OTM	OTY	OTY
	Oct	Sept	Oct	Change	%	Change	%
	2017	2017	2016		Change		Change
Information	21,500	21,300	22,600	200	0.94%	-1,100	-4.87%
Telecommunications	8,500	8,500	9,100	0	0.00%	-600	-6.59%
Financial Activities	93,200	92,400	92,200	800	0.87%	1,000	1.08%
Finance & Insurance	62,800	62,600	62,100	200	0.32%	700	1.13%
Credit Intermediation & Related Activities	30,300	30,200	30,200	100	0.33%	100	0.33%
Depository Credit Intermediation	21,300	21,200	21,200	100	0.47%	100	0.47%
Insurance Carriers & Related Activities	28,800	28,800	28,100	0	0.00%	700	2.49%
Real Estate & Rental & Leasing	30,400	29,800	30,100	600	2.01%	300	1.00%
Professional & Business Services	216,400	210,300	213,400	6,100	2.90%	3,000	1.41%
Professional, Scientific, & Technical Services	84,200	82,400	84,900	1,800	2.18%	-700	-0.82%
Legal Services	17,800	17,500	18,600	300	1.71%	-800	-4.30%
Accounting, Tax Preparation, Bookkeeping & Payroll Services	10,700	10,500	10,700	200	1.90%	0	0.00%
Architectural, Engineering, & Related Services	23,700	23,300	23,700	400	1.72%	0	0.00%
Management of Companies & Enterprises	22,900	23,000	23,000	-100	-0.43%	-100	-0.43%
Admin. & Support & Waste Mgmt. & Remediation Serv.	109,300	104,900	105,500	4,400	4.19%	3,800	3.60%
Administrative & Support Services	100,000	95,800	95,500	4,200	4.38%	4,500	4.71%
Employment Services	36,400	34,700	33,700	1,700	4.90%	2,700	8.01%
Services to Buildings & Dwellings	24,900	24,400	23,600	500	2.05%	1,300	5.51%
Education & Health Services	319,100	317,000	314,700	2,100	0.66%	4,400	1.40%
Educational Services	48,900	48,500	48,300	400	0.82%	600	1.24%
Colleges, Universities, & Professional Schools	14,500	14,300	14,200	200	1.40%	300	2.11%
Health Care & Social Assistance	270,200	268,500	266,400	1,700	0.63%	3,800	1.43%
Ambulatory Health Care Services	102,700	101,500	100,700	1,200	1.18%	2,000	1.99%
Offices of Physicians	40,700	40,700	39,600	0	0.00%	1,100	2.78%
Home Health Care Services	20,600	20,600	21,200	0	0.00%	-600	-2.83%
Hospitals	79,800	79,800	78,400	0	0.00%	1,400	1.79%
Nursing & Residential Care Facilities	44,700	44,400	42,500	300	0.68%	2,200	5.18%
Nursing Care Facilities	27,000	26,900	26,800	100	0.37%	200	0.75%
Social Assistance	43,000	42,800	44,800	200	0.47%	-1,800	-4.02%
Leisure & Hospitality	234,800	236,000	230,200	-1,200	-0.51%	4,600	2.00%
Arts, Entertainment, & Recreation	29,900	30,000	28,900	-100	-0.33%	1,000	3.46%
Amusement, Gambling, & Recreation Industries	23,300	23,400	22,200	-100	-0.43%	1,100	4.95%
Gambling Industries	9,700	9,700	10,100	0	0.00%	-400	-3.96%
Accommodation & Food Services	204,900	206,000	201,300	-1,100	-0.53%	3,600	1.79%
Accommodation	34,500	34,300	33,500	200	0.58%	1,000	2.99%
Food Services & Drinking Places	170,400	171,700	167,800	-1,300	-0.76%	2,600	1.55%
Other Services	77,300	77,200	75,900	100	0.13%	1,400	1.84%
Repair & Maintenance	20,000	19,800	19,400	200	1.01%	600	3.09%
Automotive Repair & Maintenance	11,200	11,300	11,100	-100	-0.88%	100	0.90%
Personal & Laundry Services	17,200	17,300	17,000	-100	-0.58%	200	1.18%
Government	324,100	321,700	328,200	2,400	0.75%	-4,100	-1.25%
Federal Government	31,700	31,400	30,900	300	0.96%	800	2.59%
State Government	87,000	86,700	89,500	300	0.35%	-2,500	-2.79%
Local Government	205,400	203,600	207,800	1,800	0.88%	-2,400	-1.15%

## LOUISIANA &amp; MSAs NONFARM EMPLOYMENT

12

<i>New Orleans-Metairie MSA - Not Seasonally Adjusted</i>	Prel. Oct 2017	Rev. Sept 2017	Oct 2016	OTM Change	OTM % Change	OTY Change	OTY % Change
Total Nonfarm	578,800	575,900	578,400	2,900	0.50%	400	0.07%
Total Private	511,400	508,300	508,100	3,100	0.61%	3,300	0.65%
Goods-Producing	67,800	67,300	65,800	500	0.74%	2,000	3.04%
Mining & Logging	5,200	5,200	5,400	0	0.00%	-200	-3.70%
Mining, Logging, & Construction	37,000	36,700	35,800	300	0.82%	1,200	3.35%
Construction	31,800	31,500	30,400	300	0.95%	1,400	4.61%
Heavy & Civil Engineering Construction	7,100	6,900	7,000	200	2.90%	100	1.43%
Specialty Trade Contractors	15,400	15,400	16,800	0	0.00%	-1,400	-8.33%
Manufacturing	30,800	30,600	30,000	200	0.65%	800	2.67%
Durable Goods	11,300	11,300	11,500	0	0.00%	-200	-1.74%
Transportation Equipment Manufacturing	2,200	2,300	2,500	-100	-4.35%	-300	-12.00%
Ship & Boat Building	1,400	1,400	1,500	0	0.00%	-100	-6.67%
Nondurable Goods	19,500	19,300	18,500	200	1.04%	1,000	5.41%
Chemical Manufacturing	5,500	5,400	5,100	100	1.85%	400	7.84%
Service-Providing	511,000	508,600	512,600	2,400	0.47%	-1,600	-0.31%
Private Service-Providing	443,600	441,000	442,300	2,600	0.59%	1,300	0.29%
Trade, Transportation, & Utilities	114,900	114,600	115,600	300	0.26%	-700	-0.61%
Wholesale Trade	22,800	22,600	23,400	200	0.88%	-600	-2.56%
Merchant Wholesalers, Durable Goods	10,600	10,600	10,500	0	0.00%	100	0.95%
Merchant Wholesalers, Nondurable Goods	8,600	8,600	8,600	0	0.00%	0	0.00%
Retail Trade	64,000	63,300	64,000	700	1.11%	0	0.00%
Grocery Stores	10,400	10,500	10,200	-100	-0.95%	200	1.96%
General Merchandise Stores	14,800	14,800	14,200	0	0.00%	600	4.23%
Transportation, Warehousing, & Utilities	28,100	28,700	28,200	-600	-2.09%	-100	-0.35%
Information	6,400	6,300	6,600	100	1.59%	-200	-3.03%
Financial Activities	29,600	29,500	30,600	100	0.34%	-1,000	-3.27%
Finance & Insurance	21,900	21,900	21,700	0	0.00%	200	0.92%
Credit Intermediation & Related Activities	8,100	8,100	8,100	0	0.00%	0	0.00%
Depository Credit Intermediation	6,000	5,900	6,000	100	1.69%	0	0.00%
Professional & Business Services	79,000	77,300	75,800	1,700	2.20%	3,200	4.22%
Professional, Scientific, & Technical Services	32,200	31,600	31,400	600	1.90%	800	2.55%
Legal Services	8,200	8,100	8,300	100	1.23%	-100	-1.20%
Management of Companies & Enterprises	7,900	7,900	7,700	0	0.00%	200	2.60%
Admin. & Support & Waste Mgmt. & Remediation Serv.	38,900	37,800	36,700	1,100	2.91%	2,200	5.99%
Administrative & Support Services	36,400	35,600	34,100	800	2.25%	2,300	6.74%
Employment Services	13,300	12,700	12,600	600	4.72%	700	5.56%
Education & Health Services	101,200	101,300	101,600	-100	-0.10%	-400	-0.39%
Educational Services	31,500	31,400	31,200	100	0.32%	300	0.96%
Colleges, Universities, & Professional Schools	12,700	12,900	12,400	-200	-1.55%	300	2.42%
Health Care & Social Assistance	69,700	69,900	70,400	-200	-0.29%	-700	-0.99%
Ambulatory Health Care Services	27,100	27,100	26,600	0	0.00%	500	1.88%
Hospitals	25,600	25,600	24,400	0	0.00%	1,200	4.92%
Leisure & Hospitality	88,000	87,600	88,000	400	0.46%	0	0.00%
Arts, Entertainment, & Recreation	12,000	12,000	11,400	0	0.00%	600	5.26%
Amusement, Gambling, & Recreation Industries	6,100	6,200	6,100	-100	-1.61%	0	0.00%
Gambling Industries	1,700	1,700	1,800	0	0.00%	-100	-5.56%
Accommodation & Food Services	76,000	75,600	76,600	400	0.53%	-600	-0.78%
Accommodation	14,700	14,500	14,700	200	1.38%	0	0.00%
Food Services & Drinking Places	61,300	61,100	61,900	200	0.33%	-600	-0.97%
Other Services	24,500	24,400	24,100	100	0.41%	400	1.66%
Government	67,400	67,600	70,300	-200	-0.30%	-2,900	-4.13%
Federal Government	12,900	12,700	12,500	200	1.57%	400	3.20%
State Government	11,500	11,100	12,400	400	3.60%	-900	-7.26%
Local Government	43,000	43,800	45,400	-800	-1.83%	-2,400	-5.29%
<i>Hammond MSA - Not Seasonally Adjusted</i>	Prel. Oct 2017	Rev. Sept 2017	Oct 2016	OTM Change	OTM % Change	OTY Change	OTY % Change
Total Nonfarm	46,100	45,600	45,300	500	1.10%	800	1.77%
Total Private	34,500	34,200	33,800	300	0.88%	700	2.07%
Goods-Producing	3,500	3,400	3,500	100	2.94%	0	0.00%
Service-Providing	42,600	42,200	41,800	400	0.95%	800	1.91%
Private Service-Providing	31,000	30,800	30,300	200	0.65%	700	2.31%
Government	11,600	11,400	11,500	200	1.75%	100	0.87%

<i>Baton Rouge MSA - Not Seasonally Adjusted</i>	Prel.	Rev.		OTM	OTM	OTY	OTY
	Oct 2017	Sept 2017	Oct 2016	Change	% Change	Change	% Change
Total Nonfarm	413,600	411,900	409,400	1,700	0.41%	4,200	1.03%
Total Private	340,500	339,300	336,200	1,200	0.35%	4,300	1.28%
Goods-Producing	85,500	85,300	84,500	200	0.23%	1,000	1.18%
Mining & Logging	1,000	1,000	1,000	0	0.00%	0	0.00%
Mining, Logging, & Construction	55,900	55,800	55,100	100	0.18%	800	1.45%
Construction	54,900	54,800	54,100	100	0.18%	800	1.48%
Construction of Buildings	10,700	10,800	9,600	-100	-0.93%	1,100	11.46%
Nonresidential Building Construction	9,300	9,300	8,300	0	0.00%	1,000	12.05%
Heavy & Civil Engineering Construction	20,900	20,900	19,600	0	0.00%	1,300	6.63%
Specialty Trade Contractors	23,300	23,100	24,900	200	0.87%	-1,600	-6.43%
Manufacturing	29,600	29,500	29,400	100	0.34%	200	0.68%
Nondurable Goods	18,600	18,600	18,500	0	0.00%	100	0.54%
Chemical Manufacturing	11,000	11,000	10,800	0	0.00%	200	1.85%
Basic Chemical Manufacturing	6,000	6,000	6,000	0	0.00%	0	0.00%
Service-Providing	328,100	326,600	324,900	1,500	0.46%	3,200	0.98%
Private Service-Providing	255,000	254,000	251,700	1,000	0.39%	3,300	1.31%
Trade, Transportation, & Utilities	69,000	68,400	70,100	600	0.88%	-1,100	-1.57%
Wholesale Trade	13,400	13,300	13,200	100	0.75%	200	1.52%
Retail Trade	42,100	41,400	42,900	700	1.69%	-800	-1.86%
Grocery Stores	6,700	6,800	6,700	-100	-1.47%	0	0.00%
General Merchandise Stores	9,600	9,600	9,500	0	0.00%	100	1.05%
Department Stores	1,400	1,300	1,500	100	7.69%	-100	-6.67%
Transportation, Warehousing, & Utilities	13,500	13,700	14,000	-200	-1.46%	-500	-3.57%
Information	5,100	5,100	5,300	0	0.00%	-200	-3.77%
Financial Activities	19,300	19,100	19,000	200	1.05%	300	1.58%
Finance & Insurance	12,700	12,600	12,600	100	0.79%	100	0.79%
Depository Credit Intermediation	3,700	3,700	3,800	0	0.00%	-100	-2.63%
Professional & Business Services	49,200	48,500	49,500	700	1.44%	-300	-0.61%
Professional, Scientific, & Technical Services	19,800	19,600	20,900	200	1.02%	-1,100	-5.26%
Admin. & Support & Waste Mgmt. & Remediation Serv.	22,600	22,100	22,600	500	2.26%	0	0.00%
Education & Health Services	54,800	54,900	52,100	-100	-0.18%	2,700	5.18%
Health Care & Social Assistance	47,000	47,000	45,200	0	0.00%	1,800	3.98%
Ambulatory Health Care Services	20,000	19,800	20,000	200	1.01%	0	0.00%
Hospitals	12,100	12,100	12,200	0	0.00%	-100	-0.82%
Leisure & Hospitality	40,700	41,200	39,100	-500	-1.21%	1,600	4.09%
Accommodation & Food Services	33,100	33,800	33,600	-700	-2.07%	-500	-1.49%
Food Services & Drinking Places	29,800	30,600	30,400	-800	-2.61%	-600	-1.97%
Other Services	16,900	16,800	16,600	100	0.60%	300	1.81%
Government	73,100	72,600	73,200	500	0.69%	-100	-0.14%
Federal Government	2,900	2,800	3,000	100	3.57%	-100	-3.33%
State Government	37,500	37,800	37,200	-300	-0.79%	300	0.81%
Local Government	32,700	32,000	33,000	700	2.19%	-300	-0.91%
<i>Houma-Thibodaux MSA - Not Seasonally Adjusted</i>	Prel. Oct 2017	Rev. Sept 2017	Oct 2016	OTM Change	OTM % Change	OTY Change	OTY % Change
Total Nonfarm	85,900	85,600	87,600	300	0.35%	-1,700	-1.94%
Total Private	73,400	73,200	74,900	200	0.27%	-1,500	-2.00%
Goods-Producing	17,700	17,600	17,200	100	0.57%	500	2.91%
Mining & Logging	5,500	5,600	5,700	-100	-1.79%	-200	-3.51%
Support Activities for Mining	4,800	4,900	4,800	-100	-2.04%	0	0.00%
Mining, Logging, & Construction	10,300	10,400	10,400	-100	-0.96%	-100	-0.96%
Construction	4,800	4,800	4,700	0	0.00%	100	2.13%
Service-Providing	68,200	68,000	70,400	200	0.29%	-2,200	-3.13%
Private Service-Providing	55,700	55,600	57,700	100	0.18%	-2,000	-3.47%
Trade, Transportation, & Utilities	20,800	20,600	23,700	200	0.97%	-2,900	-12.24%
Retail Trade	11,000	11,100	11,100	-100	-0.90%	-100	-0.90%
Support Activities for Transportation	4,100	4,200	4,400	-100	-2.38%	-300	-6.82%
Administrative & Support Services	3,500	3,400	3,400	100	2.94%	100	2.94%
Employment Services	1,800	1,800	1,800	0	0.00%	0	0.00%
Leisure & Hospitality	8,000	8,000	7,900	0	0.00%	100	1.27%
Government	12,500	12,400	12,700	100	0.81%	-200	-1.57%
Federal Government	400	400	400	0	0.00%	0	0.00%
State Government	2,000	2,000	2,200	0	0.00%	-200	-9.09%
Local Government	10,100	10,000	10,100	100	1.00%	0	0.00%



## LOUISIANA &amp; MSAs NONFARM EMPLOYMENT

14

<i>Shreveport-Bossier City MSA - Not Seasonally Adjusted</i>	Prel.	Rev.		OTM	OTM	OTY	OTY
	Oct 2017	Sept 2017	Oct 2016	Change	% Change	Change	% Change
Total Nonfarm	178,100	178,500	180,700	-400	-0.22%	-2,600	-1.44%
Total Private	149,400	149,800	150,700	-400	-0.27%	-1,300	-0.86%
Goods-Producing	21,700	21,700	22,600	0	0.00%	-900	-3.98%
Mining & Logging	3,200	3,200	3,800	0	0.00%	-600	-15.79%
Mining, Logging, & Construction	11,500	11,500	12,300	0	0.00%	-800	-6.50%
Construction	8,300	8,300	8,500	0	0.00%	-200	-2.35%
Manufacturing	10,200	10,200	10,300	0	0.00%	-100	-0.97%
Service-Providing	156,400	156,800	158,100	-400	-0.26%	-1,700	-1.08%
Private Service-Providing	127,700	128,100	128,100	-400	-0.31%	-400	-0.31%
Trade, Transportation, & Utilities	37,400	38,100	37,800	-700	-1.84%	-400	-1.06%
Wholesale Trade	7,800	7,800	7,700	0	0.00%	100	1.30%
Retail Trade	23,600	24,200	23,700	-600	-2.48%	-100	-0.42%
General Merchandise Stores	5,900	5,900	5,800	0	0.00%	100	1.72%
Transportation, Warehousing, & Utilities	6,000	6,100	6,400	-100	-1.64%	-400	-6.25%
Information	2,000	2,000	2,100	0	0.00%	-100	-4.76%
Financial Activities	7,400	7,400	7,400	0	0.00%	0	0.00%
Professional & Business Services	16,400	16,300	16,900	100	0.61%	-500	-2.96%
Admin. & Support & Waste Mgmt. & Remediation Serv.	10,200	10,000	10,200	200	2.00%	0	0.00%
Education & Health Services	34,100	33,700	33,800	400	1.19%	300	0.89%
Health Care & Social Assistance	31,800	31,600	31,400	200	0.63%	400	1.27%
Hospitals	13,500	13,500	13,400	0	0.00%	100	0.75%
Leisure & Hospitality	23,700	23,900	23,400	-200	-0.84%	300	1.28%
Arts, Entertainment, & Recreation	4,900	4,900	4,800	0	0.00%	100	2.08%
Amusement, Gambling, & Recreation Industries	4,600	4,600	4,600	0	0.00%	0	0.00%
Gambling Industries	3,200	3,200	3,400	0	0.00%	-200	-5.88%
Accommodation & Food Services	18,800	19,000	18,600	-200	-1.05%	200	1.08%
Food Services & Drinking Places	15,200	15,300	15,000	-100	-0.65%	200	1.33%
Other Services	6,700	6,700	6,700	0	0.00%	0	0.00%
Government	28,700	28,700	30,000	0	0.00%	-1,300	-4.33%
Federal Government	4,800	4,800	4,900	0	0.00%	-100	-2.04%
State Government	4,900	5,100	5,400	-200	-3.92%	-500	-9.26%
Local Government	19,000	18,800	19,700	200	1.06%	-700	-3.55%
<i>Lafayette MSA - Not Seasonally Adjusted</i>	Prel. Oct 2017	Rev. Sept 2017	Oct 2016	OTM Change	OTM % Change	OTY Change	OTY % Change
Total Nonfarm	199,400	199,000	200,100	400	0.20%	-700	-0.35%
Total Private	172,800	172,900	173,600	-100	-0.06%	-800	-0.46%
Goods-Producing	38,500	38,700	39,000	-200	-0.52%	-500	-1.28%
Mining & Logging	13,300	13,500	14,100	-200	-1.48%	-800	-5.67%
Support Activities for Mining	11,100	11,300	11,800	-200	-1.77%	-700	-5.93%
Mining, Logging, & Construction	22,700	23,100	23,900	-400	-1.73%	-1,200	-5.02%
Construction	9,400	9,600	9,800	-200	-2.08%	-400	-4.08%
Manufacturing	15,800	15,600	15,100	200	1.28%	700	4.64%
Service-Providing	160,900	160,300	161,100	600	0.37%	-200	-0.12%
Private Service-Providing	134,300	134,200	134,600	100	0.07%	-300	-0.22%
Trade, Transportation, & Utilities	41,400	41,600	41,500	-200	-0.48%	-100	-0.24%
Wholesale Trade	9,200	9,100	9,100	100	1.10%	100	1.10%
Retail Trade	27,400	27,700	27,200	-300	-1.08%	200	0.74%
General Merchandise Stores	6,100	6,100	5,800	0	0.00%	300	5.17%
Transportation, Warehousing, & Utilities	4,800	4,800	5,200	0	0.00%	-400	-7.69%
Information	2,500	2,500	2,500	0	0.00%	0	0.00%
Financial Activities	10,400	10,400	10,600	0	0.00%	-200	-1.89%
Professional & Business Services	20,100	20,000	20,500	100	0.50%	-400	-1.95%
Professional, Scientific, & Technical Services	8,900	8,800	9,200	100	1.14%	-300	-3.26%
Education & Health Services	30,500	30,200	30,500	300	0.99%	0	0.00%
Health Care & Social Assistance	29,200	29,000	29,100	200	0.69%	100	0.34%
Hospitals	7,500	7,500	7,500	0	0.00%	0	0.00%
Leisure & Hospitality	22,200	22,300	21,800	-100	-0.45%	400	1.83%
Accommodation & Food Services	19,800	19,800	19,400	0	0.00%	400	2.06%
Food Services & Drinking Places	18,200	18,200	17,800	0	0.00%	400	2.25%
Other Services	7,200	7,200	7,200	0	0.00%	0	0.00%
Government	26,600	26,100	26,500	500	1.92%	100	0.38%
Federal Government	1,400	1,400	1,400	0	0.00%	0	0.00%
State Government	5,500	5,300	5,500	200	3.77%	0	0.00%
Local Government	19,700	19,400	19,600	300	1.55%	100	0.51%



<i>Lake Charles MSA - Not Seasonally Adjusted</i>	Prel.	Rev.		OTM	OTM	OTY	OTY
	Oct	Sept	Oct	Change	%	Change	%
	2017	2017	2016		Change		Change
Total Nonfarm	116,700	115,100	112,000	1,600	1.39%	4,700	4.20%
Total Private	101,600	100,200	96,800	1,400	1.40%	4,800	4.96%
Goods-Producing	37,400	36,600	33,900	800	2.19%	3,500	10.32%
Mining & Logging	500	500	500	0	0.00%	0	0.00%
Mining, Logging, & Construction	27,000	26,100	23,400	900	3.45%	3,600	15.38%
Construction	26,500	25,600	22,900	900	3.52%	3,600	15.72%
Heavy & Civil Engineering Construction	8,700	8,700	9,400	0	0.00%	-700	-7.45%
Manufacturing	10,400	10,500	10,500	-100	-0.95%	-100	-0.95%
Nondurable Goods	7,600	7,500	7,600	100	1.33%	0	0.00%
Service-Providing	79,300	78,500	78,100	800	1.02%	1,200	1.54%
Private Service-Providing	64,200	63,600	62,900	600	0.94%	1,300	2.07%
Trade, Transportation, & Utilities	18,500	18,200	18,300	300	1.65%	200	1.09%
Retail Trade	11,400	11,200	11,600	200	1.79%	-200	-1.72%
Professional & Business Services	9,700	9,400	9,500	300	3.19%	200	2.11%
Leisure & Hospitality	15,300	15,300	14,800	0	0.00%	500	3.38%
Accommodation & Food Services	13,900	14,000	13,700	-100	-0.71%	200	1.46%
Government	15,100	14,900	15,200	200	1.34%	-100	-0.66%
Federal Government	600	600	600	0	0.00%	0	0.00%
State Government	2,700	2,700	2,900	0	0.00%	-200	-6.90%
Local Government	11,800	11,600	11,700	200	1.72%	100	0.85%
<i>Monroe MSA - Not Seasonally Adjusted</i>	Prel.	Rev.		OTM	OTM	OTY	OTY
	Oct	Sept	Oct	Change	%	Change	%
	2017	2017	2016		Change		Change
Total Nonfarm	80,300	79,300	79,800	1,000	1.26%	500	0.63%
Total Private	69,000	68,300	68,000	700	1.02%	1,000	1.47%
Goods-Producing	11,100	10,900	10,800	200	1.83%	300	2.78%
Manufacturing	6,500	6,500	6,600	0	0.00%	-100	-1.52%
Nondurable Goods	4,600	4,600	4,700	0	0.00%	-100	-2.13%
Service-Providing	69,200	68,400	69,000	800	1.17%	200	0.29%
Private Service-Providing	57,900	57,400	57,200	500	0.87%	700	1.22%
Trade, Transportation, & Utilities	14,300	14,700	14,600	-400	-2.72%	-300	-2.05%
Retail Trade	10,000	10,300	10,100	-300	-2.91%	-100	-0.99%
Professional & Business Services	9,000	8,800	8,800	200	2.27%	200	2.27%
Education & Health Services	16,000	16,000	15,900	0	0.00%	100	0.63%
Hospitals	3,700	3,700	3,700	0	0.00%	0	0.00%
Leisure & Hospitality	8,100	8,100	7,900	0	0.00%	200	2.53%
Government	11,300	11,000	11,800	300	2.73%	-500	-4.24%
Federal Government	500	500	500	0	0.00%	0	0.00%
State Government	2,300	2,100	2,700	200	9.52%	-400	-14.81%
Local Government	8,500	8,400	8,600	100	1.19%	-100	-1.16%
<i>Alexandria MSA - Not Seasonally Adjusted</i>	Prel.	Rev.		OTM	OTM	OTY	OTY
	Oct	Sept	Oct	Change	%	Change	%
	2017	2017	2016		Change		Change
Total Nonfarm	62,700	62,400	63,400	300	0.48%	-700	-1.10%
Total Private	49,500	49,300	50,000	200	0.41%	-500	-1.00%
Goods-Producing	8,400	8,400	8,400	0	0.00%	0	0.00%
Service-Providing	54,300	54,000	55,000	300	0.56%	-700	-1.27%
Private Service-Providing	41,100	40,900	41,600	200	0.49%	-500	-1.20%
Trade, Transportation, & Utilities	10,800	10,900	11,400	-100	-0.92%	-600	-5.26%
Retail Trade	7,600	7,700	8,000	-100	-1.30%	-400	-5.00%
Hospitals	4,000	4,000	4,100	0	0.00%	-100	-2.44%
Government	13,200	13,100	13,400	100	0.76%	-200	-1.49%
Federal Government	2,800	2,800	2,900	0	0.00%	-100	-3.45%
State Government	3,400	3,400	3,500	0	0.00%	-100	-2.86%
Local Government	7,000	6,900	7,000	100	1.45%	0	0.00%



## CIVILIAN LABOR FORCE (Not Seasonally Adjusted)

Area	October 2017			September 2017			October 2016		
	Employed	Unemployed	Rate	Employed	Unemployed	Rate	Employed	Unemployed	Rate
<b>UNITED STATES</b>	<b>154,223,000</b>	<b>6,242,000</b>	<b>3.9</b>	<b>154,494,000</b>	<b>6,556,000</b>	<b>4.1</b>	<b>152,335,000</b>	<b>7,447,000</b>	<b>4.7</b>
<b>LOUISIANA</b>	<b>2,009,107</b>	<b>89,835</b>	<b>4.3</b>	<b>1,980,007</b>	<b>110,115</b>	<b>5.3</b>	<b>1,993,994</b>	<b>124,482</b>	<b>5.9</b>
<b>ALEXANDRIA MSA</b>	<b>61,295</b>	<b>2,983</b>	<b>4.6</b>	<b>60,447</b>	<b>3,704</b>	<b>5.8</b>	<b>61,510</b>	<b>3,997</b>	<b>6.1</b>
Grant	7,723	385	4.7	7,607	499	6.2	7,741	534	6.5
Rapides	53,572	2,598	4.6	52,840	3,205	5.7	53,769	3,463	6.1
<b>BATON ROUGE MSA</b>	<b>406,443</b>	<b>15,558</b>	<b>3.7</b>	<b>400,817</b>	<b>19,067</b>	<b>4.5</b>	<b>400,648</b>	<b>21,533</b>	<b>5.1</b>
Ascension	59,825	2,204	3.6	58,999	2,714	4.4	58,987	2,916	4.7
East Baton Rouge	227,333	8,487	3.6	224,160	10,406	4.4	224,159	11,808	5.0
East Feliciana	7,870	325	4.0	7,755	406	5.0	7,750	439	5.4
Iberville	13,566	762	5.3	13,412	879	6.2	13,365	898	6.3
Livingston	66,114	2,322	3.4	65,174	2,905	4.3	65,142	3,580	5.2
Pointe Coupee	9,540	478	4.8	9,423	571	5.7	9,373	629	6.3
St. Helena	4,189	251	5.7	4,133	296	6.7	4,124	340	7.6
West Baton Rouge	12,807	537	4.0	12,630	650	4.9	12,632	675	5.1
West Feliciana	5,199	192	3.6	5,131	240	4.5	5,116	248	4.6
<b>HAMMOND MSA</b>	<b>51,830</b>	<b>2,458</b>	<b>4.5</b>	<b>50,944</b>	<b>3,151</b>	<b>5.8</b>	<b>50,919</b>	<b>3,424</b>	<b>6.3</b>
Tangipahoa	51,830	2,458	4.5	50,944	3,151	5.8	50,919	3,424	6.3
<b>HOUMA-THIBODAUX MSA</b>	<b>83,642</b>	<b>3,898</b>	<b>4.5</b>	<b>82,597</b>	<b>4,814</b>	<b>5.5</b>	<b>84,524</b>	<b>6,000</b>	<b>6.6</b>
Lafourche	39,339	1,739	4.2	38,811	2,155	5.3	39,755	2,656	6.3
Terrebonne	44,303	2,159	4.6	43,786	2,659	5.7	44,769	3,344	7.0
<b>LAFAYETTE MSA</b>	<b>199,242</b>	<b>9,633</b>	<b>4.6</b>	<b>196,426</b>	<b>11,642</b>	<b>5.6</b>	<b>198,301</b>	<b>14,615</b>	<b>6.9</b>
Acadia	22,329	1,184	5.0	22,082	1,447	6.1	22,197	1,739	7.3
Iberia	27,274	1,658	5.7	26,892	1,973	6.8	27,098	2,688	9.0
Lafayette	106,255	4,510	4.1	104,652	5,499	5.0	105,842	6,732	6.0
St. Martin	20,898	1,122	5.1	20,667	1,357	6.2	20,827	1,689	7.5
Vermilion	22,486	1,159	4.9	22,133	1,366	5.8	22,337	1,767	7.3
<b>LAKE CHARLES MSA</b>	<b>109,362</b>	<b>3,787</b>	<b>3.3</b>	<b>107,002</b>	<b>4,717</b>	<b>4.2</b>	<b>104,717</b>	<b>4,926</b>	<b>4.5</b>
Calcasieu	105,445	3,661	3.4	103,165	4,559	4.2	100,969	4,764	4.5
Cameron	3,917	126	3.1	3,837	158	4.0	3,748	162	4.1
<b>MONROE MSA</b>	<b>77,453</b>	<b>3,546</b>	<b>4.4</b>	<b>75,819</b>	<b>4,297</b>	<b>5.4</b>	<b>76,530</b>	<b>4,807</b>	<b>5.9</b>
Ouachita	68,725	3,118	4.3	67,247	3,783	5.3	67,929	4,235	5.9
Union	8,728	428	4.7	8,572	514	5.7	8,601	572	6.2
<b>NEW ORLEANS-METAIRIE MSA</b>	<b>571,148</b>	<b>24,240</b>	<b>4.1</b>	<b>562,233</b>	<b>29,735</b>	<b>5.0</b>	<b>567,701</b>	<b>32,129</b>	<b>5.4</b>
Jefferson	207,963	8,383	3.9	204,783	10,258	4.8	206,782	11,184	5.1
Orleans	171,120	7,936	4.4	168,382	9,676	5.4	170,083	10,362	5.7
Plaquemines	9,677	401	4.0	9,564	479	4.8	9,594	549	5.4
St. Bernard	18,455	875	4.5	18,158	1,078	5.6	18,316	1,172	6.0
St. Charles	24,272	934	3.7	23,908	1,177	4.7	24,135	1,293	5.1
St. James	8,991	522	5.5	8,877	638	6.7	8,942	656	6.8
St. John the Baptist	18,963	1,021	5.1	18,691	1,243	6.2	18,868	1,273	6.3
St. Tammany	111,707	4,168	3.6	109,870	5,186	4.5	110,981	5,640	4.8
<b>SHREVEPORT-BOSSIER CITY MSA</b>	<b>176,388</b>	<b>8,750</b>	<b>4.7</b>	<b>174,747</b>	<b>10,457</b>	<b>5.6</b>	<b>177,702</b>	<b>12,092</b>	<b>6.4</b>
Bossier	53,268	2,147	3.9	52,783	2,586	4.7	53,664	3,049	5.4
Caddo	99,478	5,203	5.0	98,522	6,209	5.9	100,225	7,043	6.6
De Soto	9,861	553	5.3	9,783	657	6.3	9,929	762	7.1
Webster	13,781	847	5.8	13,659	1,005	6.9	13,884	1,238	8.2
<b>NON-MSA PARISHES</b>									
Allen	8,639	408	4.5	8,486	489	5.4	8,425	555	6.2
Assumption	8,350	546	6.1	8,247	674	7.6	8,253	747	8.3
Avoyelles	14,990	753	4.8	14,797	951	6.0	14,508	1,021	6.6
Beauregard (DeRidder MC)	14,122	624	4.2	13,767	816	5.6	14,251	834	5.5
Bienville	5,306	284	5.1	5,268	350	6.2	5,146	413	7.4
Caldwell	3,681	180	4.7	3,647	204	5.3	3,672	282	7.1
Catahoula	3,186	197	5.8	3,163	241	7.1	3,001	277	8.5
Claiborne	5,398	260	4.6	5,369	311	5.5	5,518	390	6.6
Concordia (Natchez, MS-LAMC)	6,569	467	6.6	6,535	558	7.9	6,548	558	7.9
East Carroll	1,814	188	9.4	1,797	209	10.4	1,867	227	10.8
Evangeline	11,855	624	5.0	11,737	760	6.1	11,606	891	7.1
Franklin	6,660	426	6.0	6,584	536	7.5	6,486	578	8.2
Jackson	6,524	262	3.9	6,505	327	4.8	6,554	385	5.5
Jefferson Davis	12,974	557	4.1	12,737	679	5.1	12,814	788	5.8
La Salle	5,912	234	3.8	5,806	287	4.7	5,817	349	5.7
Lincoln (Ruston MC)	19,484	900	4.4	18,946	1,118	5.6	19,465	1,214	5.9
Madison	3,423	264	7.2	3,425	297	8.0	3,372	316	8.6
Morehouse (Bastrop MC)	9,686	663	6.4	9,584	808	7.8	9,551	934	8.9
Natchitoches (Natchitoches MC)	14,968	809	5.1	14,850	1,022	6.4	14,727	1,059	6.7
Red River	3,591	183	4.8	3,565	223	5.9	3,486	243	6.5
Richland	7,865	391	4.7	7,763	468	5.7	7,721	529	6.4
Sabine	8,133	408	4.8	8,070	495	5.8	8,383	587	6.5
St. Landry (Opelousas MC)	29,642	1,733	5.5	29,407	2,135	6.8	29,646	2,530	7.9
St. Mary (Morgan City MC)	18,559	1,335	6.7	18,437	1,576	7.9	19,773	2,019	9.3
Tensas	1,415	95	6.3	1,421	127	8.2	1,428	149	9.4
Vernon (Fort Polk South MC)	15,227	824	5.1	15,072	1,194	7.3	15,477	1,128	6.8
Washington (Bogalusa MC)	16,182	817	4.8	15,874	1,016	6.0	15,669	1,121	6.7
West Carroll	3,552	284	7.4	3,559	341	8.7	3,600	448	11.1
Winn	4,601	264	5.4	4,554	320	6.6	4,678	387	7.6

In addition to nine (9) Metropolitan Statistical Areas (MSAs) in Louisiana, there are nine (9) Micropolitan Statistical Areas (MCs). Civilian Labor Force can be derived by adding employed and unemployed. For related information or data, please visit <http://www.bls.gov/au/>.

## LOUISIANA - PRIVATE EMPLOYMENT (Not Seasonally Adjusted)

	Average Weekly Earnings (\$)			Average Weekly Hours			Average Hourly Earnings (\$)		
	OCT	SEPT	OCT	OCT	SEPT	OCT	OCT	SEPT	OCT
	2017	2017	2016	2017	2017	2016	2017	2017	2016
Total Private	831.80	820.22	825.38	35.9	35.6	35.7	23.17	23.04	23.12
Goods-Producing	1,141.68	1,139.34	1,161.28	42.3	42.8	42.6	26.99	26.62	27.26
Private Service-Providing	755.29	741.23	743.92	34.3	33.8	34.0	22.02	21.93	21.88
Construction	1,087.16	1,087.99	1,142.11	41.4	41.4	42.6	26.26	26.28	26.81
Manufacturing	1,127.41	1,135.25	1,077.93	42.9	43.9	41.3	26.28	25.86	26.10
Trade, Transportation, and Utilities	728.59	729.38	718.52	35.3	35.1	35.5	20.64	20.78	20.24
Financial Activities	985.06	966.61	1,011.06	37.2	36.6	37.6	26.48	26.41	26.89
Professional and Business Services	1,006.25	970.91	990.53	37.9	37.1	38.2	26.55	26.17	25.93
Education and Health Services	787.28	773.68	765.80	34.2	33.8	33.9	23.02	22.89	22.59
Leisure and Hospitality	359.10	350.33	359.90	27.0	26.4	26.6	13.30	13.27	13.53

METROPOLITAN STATISTICAL AREAS (MSAs) - PRIVATE EMPLOYMENT  
(Not Seasonally Adjusted)

	Average Weekly Earnings (\$)			Average Weekly Hours			Average Hourly Earnings (\$)		
	OCT	SEPT	OCT	OCT	SEPT	OCT	OCT	SEPT	OCT
	2017	2017	2016	2017	2017	2016	2017	2017	2016
Alexandria	706.88	678.59	655.60	34.6	34.1	33.5	20.43	19.90	19.57
Baton Rouge	912.05	888.51	895.44	37.0	36.7	36.4	24.65	24.21	24.60
Hammond	637.42	642.56	502.37	31.4	31.7	31.3	20.30	20.27	16.05
Houma	975.43	952.48	926.59	39.3	39.1	38.1	24.82	24.36	24.32
Lafayette	866.04	871.20	881.27	36.1	36.0	37.2	23.99	24.20	23.69
Lake Charles	792.96	806.56	915.26	35.4	35.5	37.1	22.40	22.72	24.67
Monroe	709.96	710.41	730.50	36.9	36.6	37.5	19.24	19.41	19.48
New Orleans	897.25	879.83	881.14	35.2	34.9	34.8	25.49	25.21	25.32
Shreveport	698.72	668.78	669.58	35.2	34.0	33.8	19.85	19.67	19.81

AVERAGE HOURS AND EARNINGS FOR PRODUCTION WORKERS IN MANUFACTURING  
AND SELECTED NONMANUFACTURING INDUSTRIES (Not Seasonally Adjusted)

	Production Workers	Average Weekly Earnings (\$)			Average Weekly Hours			Average Hourly Earnings (\$)			
		OCT	OCT	SEPT	OCT	OCT	SEPT	OCT	OCT	SEPT	OCT
		2017	2017	2017	2016	2017	2017	2016	2017	2017	2016
Mining & Logging	27,300	1,477.58	1,435.92	1,558.08	49.7	49.6	49.4	29.73	28.95	31.54	
Manufacturing	105,000	935.88	941.54	944.95	42.1	42.7	42.7	22.23	22.05	22.13	
Durable Goods	48,500	997.33	1,028.48	943.49	43.4	44.6	41.6	22.98	23.06	22.68	
Nondurable Goods	56,500	881.40	865.92	945.25	40.9	41.0	43.6	21.55	21.12	21.68	

WORKFORCE DEVELOPMENT AREA		PERIOD	LABORFORCE	EMP	UNEMP	URATE
St. Tammany, Plaquemines, St. Bernard	WDA 10	September	144,335	137,592	6,743	4.7
		October	145,283	139,839	5,444	3.7
Jefferson	WDA 11	September	215,041	204,783	10,258	4.8
		October	216,346	207,963	8,383	3.9
Orleans	WDA 12	September	178,058	168,382	9,676	5.4
		October	179,056	171,120	7,936	4.4
St. James, St. John the Baptist, St. Charles	WDA 14	September	54,534	51,476	3,058	5.6
		October	54,703	52,226	2,477	4.5
Pointe Coupee, West Feliciana, East Feliciana, St. Helena, Tangipahoa, Washington, Livingston, Ascension, Iberville, West Baton Rouge	WDA 20	September	256,303	243,475	12,828	5.0
		October	257,468	247,122	10,346	4.0
East Baton Rouge	WDA 21	September	234,566	224,160	10,406	4.4
		October	235,820	227,333	8,487	3.6
Assumption, Lafourche, Terrebonne	WDA 31	September	96,332	90,844	5,488	5.7
		October	96,436	91,992	4,444	4.6
Lafayette, Vermilion, Iberia, St. Mary, St. Martin, St. Landry, Evangeline, Acadia	WDA 40	September	272,120	256,007	16,113	5.9
		October	272,623	259,298	13,325	4.9
Vernon, Allen, Beauregard, Calcasieu, Jefferson Davis, Cameron	WDA 51	September	164,959	157,064	7,895	4.8
		October	166,524	160,324	6,200	3.7
Avoyelles, Catahoula, Concordia, LaSalle, Grant, Winn	WDA 60	September	45,318	42,462	2,856	6.3
		October	45,281	42,981	2,300	5.1
Rapides	WDA 61	September	56,045	52,840	3,205	5.7
		October	56,170	53,572	2,598	4.6
DeSoto, Sabine, Natchitoches, Red River, Bienville, Lincoln, Claiborne, Webster	WDA 70	September	84,691	79,510	5,181	6.1
		October	84,766	80,522	4,244	5.0
Caddo, Bossier	WDA 71	September	160,100	151,305	8,795	5.5
		October	160,096	152,746	7,350	4.6
Ouachita	WDA 81	September	71,030	67,247	3,783	5.3
		October	71,843	68,725	3,118	4.3
Union, East Carroll, West Carroll, Morehouse, Franklin, Richland, Caldwell, Jackson, Madison, Tensas	WDA 83	September	56,688	52,857	3,831	6.8
		October	56,529	53,348	3,181	5.6

\*WDA data are seasonally adjusted. September is revised, while October is preliminary.

## Labor Market Questions and Answers!

When will the new projections data be included in the website?

The new projections data for the short-term 2014-2017 and long-term 2014-2024 are now on the website.

[http://www.laworks.net/LaborMarketInfo/LMI\\_employmentprojections.asp](http://www.laworks.net/LaborMarketInfo/LMI_employmentprojections.asp)

This web page shows industry and occupational information sorted by education and all occupations. The data includes occupations that are the fastest growing and the ones that will add the most jobs.



# Glossary & Technical Notes

**Average Hourly Earnings/Average Weekly Earnings/ Average Weekly Hours (CES/BLS)** - average total money earnings, in the survey week (i.e., the week that includes the twelfth of the month), of production workers plus nonsupervisory workers not in production, including overtime, paid vacation and sick leave.

**Civilian Labor Force** - that portion of the population, age sixteen or older, which is employed or unemployed and actively seeking employment during the reference week of the twelfth of the month.

**Employed** - the members of the labor force who worked for pay or profit, or had a job from which they were temporarily absent because of illness, vacation, labor dispute, or other reasons not reflecting a shortage of work, or who worked fifteen hours or more as unpaid workers in an enterprise operated by a member of the family.

**Unemployed** - the members of the labor force who did not work but were seeking work or were awaiting recall from layoffs or the beginning of a new job within thirty days.

**Unemployment Rate** - the number of unemployed persons expressed as a percentage of the labor force.

**Continued Claim** - each week claimed subsequent to the filing of the initial claim for a week of unemployment compensation.

**Current Employment Statistics (CES)** - estimates of nonfarm employment and production workers hours and earnings by industry. They are produced as part of a nationwide program, in cooperation with the Bureau of Labor Statistics (BLS), for the state and each metropolitan statistical area (MSA) from a sample of employing establishments.

**Current Population Survey (CPS)** - a monthly household survey of the U.S. population conducted for the Bureau of Labor Statistics (BLS) by the Bureau of the Census, of 60,000 selected households. Respondents are interviewed to obtain information on the employment status of each household member age 16 and over, during the reference week of the twelfth.

**Durable Goods** - items with a normal life expectancy of three years or more. Automobiles, furniture, household appliances, and mobile homes are examples.

**Extended Layoff Event** - Fifty or more initial claims for unemployment insurance benefits from an establishment during a 5-week period, with at least 50 workers separated for more than 30 days.

**Initial Claims** - a new claim, filed to open a claim for unemployment compensation.

**Metropolitan Statistical Area (MSA)** - a geographical area comprised of a parish generally containing a central city (or twin cities) of 50,000 inhabitants or more and contiguous parishes that are socially and economically integrated with the central city.

**Micropolitan Statistical Area (MC)** - a geographical area comprised of a parish containing a central city of at least 10,000 but less than 50,000 inhabitants and contiguous parishes that are socially and economically integrated with the central city.

**NAICS (North American Industry Classification System)** - an industry classification system that groups establishments into industries based on the activities in which they are primarily engaged.

**Nonfarm Employment** - employment by place of work that does not include the self employed, unpaid family workers, domestics, or agriculture workers. All estimates of nonfarm employment in this publication are in cooperation with the U.S. Department of Labor Bureau of Labor Statistics and include all full-time and part-time workers who were employed during the pay period including the twelfth of the month.

**Nondurable Goods** - items that generally last for only a short period of time (less than three years). Food, beverages, apparel, and gasoline are common examples.

**Seasonally Adjusted** - monthly data that is adjusted to minimize the changes in any time series which result from normal annual occurrences such as Christmas, summer vacations, and weather patterns.

**Separation** - The release of persons from an employer as part of a mass layoff event. Such releases involve both persons subject to recall and those who are terminated by the establishment.

**Subsector** - refers to the three-digit NAICS code, which will fall under the particular sector. Example: If Manufacturing (31-33) is the industry sector, then Food manufacturing (311), Paper manufacturing (322), Chemical manufacturing (325), Transportation equipment manufacturing (336), are some of the subsectors of manufacturing.

**Supersector** - refers to these five categories: Total Nonfarm, Total Private, Goods-Producing, Service-Providing, and Private Service-Providing.

**Summary Industry Sector** - a combination of industry sectors. A summary sector may or may not be published. The summary industry sectors are Mining & Logging; Construction; Manufacturing; Trade, Transportation, & Utilities; Information; Financial Activities; Professional & Business Services; Education & Health Services; Leisure & Hospitality; Other Services; and Government.

**Industry Sector** - 20 industry sectors based on two-digit NAICS code. They are Agriculture, Forestry, Fishing and Hunting (11), Mining (21), Utilities (22), Construction (23), Manufacturing (31-33), Wholesale Trade (42), Retail Trade (44-45), Transportation and Warehousing (48-49), Information (51), Finance and Insurance (52), Real Estate and Rental and Leasing (53), Professional and Technical Services (54), Management of Companies and Enterprises (55), Administrative and Waste Services (56), Educational Services (61), Health Care and Social Assistance (62), Arts, Entertainment, and Recreation (71), Accommodation and Food Services (72), Other Services (81), and Public Administration (92).

## Constraints of the monthly civilian labor force and nonfarm employment estimates:

The civilian labor force estimates are derived by a monthly survey of approximately 723 households throughout Louisiana following the Bureau of Labor Statistics (BLS) methodology. The US Census Bureau conducts the survey by calling randomly selected households and providing BLS with survey results. Households are asked for the number of residents who are sixteen and over and whether they were working or actively looking for work during the week of the twelfth of the month. Responses to these questions become part of the formula to determine the number of people employed and the number of individuals unemployed for the state, MSAs, and each parish every month.

The nonfarm employment estimates are derived from responses received from the monthly BLS survey of approximately 7,000 businesses across the state. Responses capture employment activity during the 12th of each month. This survey relies on responses from these businesses to produce industry employment levels for the state and all metropolitan statistical areas.

Both data sets are comparable with estimates for the U.S., all 50 states, and 387 metropolitan areas across the U.S.



## LABOR MARKET INFORMATION WEB LINKS

### **Civilian Labor Force - LAUS (Local Area Unemployment Statistics) –**

#### **Employment, Unemployment and Unemployment Insurance Rate**

LA <https://www.louisianaworks.net/hire/altentry.asp?action=lmiguest>

Left menu: Historical Data Analysis – Employment and Wage Data – Labor Force Data – Labor Force Employment and Unemployment (LAUS)

States <http://data.bls.gov/cgi-bin/dsrv?la>

US <http://data.bls.gov/pdq/querytool.jsp?survey=ln>

**Consumer Price Index (US)** <http://data.bls.gov/cgi-bin/surveymost?cu>

#### **Download Louisiana Workforce Commission’s Labor Market Information Products**

LA [http://www.laworks.net/Downloads/Downloads\\_LMI.asp](http://www.laworks.net/Downloads/Downloads_LMI.asp)

#### **Employment and Wage Data – Quarterly Census of Employment and Wages (QCEW)**

LA <https://www.louisianaworks.net/hire/altentry.asp?action=lmiguest>

Left menu: Historical Data Analysis – Employment and Wage Data – Industry Data – Quarterly Census of Employment and Wages (QCEW)

States & US <http://data.bls.gov/cgi-bin/dsrv?en>

#### **NAICS (North American Industry Classification System) Codes Look-Up Table**

<http://www.census.gov/eos/www/naics/>

#### **Nonfarm Employment, Hours and Earnings - CES (Current Employment Statistics)**

LA <https://www.louisianaworks.net/hire/altentry.asp?action=lmiguest>

Left menu: Historical Data Analysis – Employment and Wage Data – Industry Data – Current Employment Statistics (CES) – select Show Earnings Data under table

States <http://data.bls.gov/cgi-bin/dsrv?sm>

US <http://data.bls.gov/cgi-bin/dsrv?ce>

#### **Unemployment Insurance Claimants Data (by Occupation) - Unemployment Insurance (UI)**

LA <https://www.louisianaworks.net/hire/altentry.asp?action=lmiguest>

Left menu: Historical Data Analysis – Employment and Wage Data – Labor Force Data – Unemployment Insurance Claimants

#### **Unemployment Insurance Claims Data (by Region, Parish, Industry) - UI**

LA [http://www.laworks.net/LaborMarketInfo/LMI\\_UIClaimsReportMenu.asp](http://www.laworks.net/LaborMarketInfo/LMI_UIClaimsReportMenu.asp)

States & US <http://ows.doleta.gov/unemploy/claims.asp>

#### **Unemployment Rates for all States - LAUS**

States <http://www.bls.gov/web/laus/laumstrk.htm>



Office of Occupational Information Services  
 Research & Statistics Division  
 Post Office Box 94094  
 Baton Rouge, LA 70804-9094

Data for: 10/2017



*Workforce At A Glance* is published monthly by the Louisiana Workforce Commission. The material in this publication is not copyrighted and may be reproduced; however, the LWC would appreciate credit for the material used and a copy of the reprint.

**LMI Staff:**

Kelly Ebey  
 Kelsey Canizaro  
 Jeffrey Duplantier

**Contributors:**

Kelsey Canizaro  
 Karen Clark  
 Natalie Foster-Lawrence  
 Karl Gleichman  
 Mark Jones  
 Sean Painter  
 Tara Robinson

**Contact Us:**

Phone (225) 342-3141; Fax (225) 219-7759  
 Toll Free (888) 302-7662  
 Email [lmj@lwc.la.gov](mailto:lmj@lwc.la.gov)

**John Bel Edwards, Governor**  
 State of Louisiana

**Ava Dejoie, Executive Director**  
 Louisiana Workforce Commission

**Connect With Us:**

Website: <https://www.laworks.net>

 <https://www.facebook.com/LouisianaWorks>

 <https://twitter.com/LouisianaWorks>

 <https://www.linkedin.com/company/louisiana-workforce-commission>

 <http://instagram.com/louisianaworks>