

Louisiana Workforce

at a glance

Release Date: October 27, 2017

Data For: September 2017

<http://www.laworks.net>

In This Issue

- 2 Economic Comparison
- 3-4 NSA State & Area Employment
- 5-8 Data Trends (Graphs)
- 9-15 Nonfarm Employment
- 16-17 Unemployment Rates & Civilian Labor Force
- 18 Average Hours & Earnings
- 19 Workforce Development Area Data
- 20-21 Glossary, Data Constraints, Downloads & Web Links

Louisiana's seasonally adjusted nonfarm employment was estimated at 1,980,400 for September 2017. The figure represents a decrease of 2,800 jobs over the month but an increase of 14,700 jobs over the year. Private sector employment was estimated at 1,659,500, a decrease of 2,300 jobs over the month but a gain of 20,600 jobs over the year.

Over the month the largest gain was seen in the other services sector, which added 1,000 jobs for a new series high for employment of 77,800 jobs. Leisure and hospitality added 900 jobs to also reach a new series employment high of 238,100. The arts, entertainment, and recreation subsector added 600 of the 900 jobs. Trade, transportation, and utilities also added 900 jobs from August, its first over-the-month gain since March of this year. The transportation, warehousing, and utilities subsector was responsible for 800 of the 900 job increase. Construction showed a slight increase of 200 jobs, its fourth gain in the last five months. The largest over-the-month decline was seen in the professional and business services sector, which lost 3,300 jobs. It is the fourth straight monthly decline for the series and largest loss since April 2009. Financial activities lost 1,000 jobs as the real estate and rental and leasing subsector lost 600 jobs. Education and health services lost 500 jobs, its third monthly loss in a row. Government also lost 500 jobs as local government fell by 600 jobs. Manufacturing declined by 300 jobs, the fourth consecutive time the series has lost jobs over the month in the month of September. Both the mining and logging sector and the information sector showed slight decreases of 100 jobs

Over the year the largest gain was seen in the construction sector which added 14,700 jobs. Construction has seen over-the-year gains for 12 consecutive months. Leisure and hospitality showed 6,800 more jobs than last year, as the accommodation and food services sector gained 5,900 jobs. The education and health services sector rose by 5,900 jobs over the year, with the health care and social assistance subsector gaining 4,100 jobs. Education and health services has added jobs over the year every month beginning in October 2006. Other services added 2,600 jobs for its 12th straight over-the-year increase. Financial activities added 100 jobs from last September. The largest decline over the year was seen in the government sector, which lost 5,900 jobs. State government declined by 3,600 jobs while local government lost 2,800. Trade, transportation, and utilities lost 5,300 jobs for its 23rd straight over-the-year decrease. The retail trade subsector lost 3,800 jobs while the transportation, warehousing, and utilities subsector lost 2,200 jobs over the year. Professional and business services dropped by 2,200 jobs, its first over-the-year loss since April. Information showed 1,300 fewer jobs than last year, its 20th consecutive month with an over-the-year loss. Mining and logging sector fell by 600 jobs. The series has lost jobs over the year for 33 straight months. Manufacturing fell by 100 jobs.

The September 2017 preliminary seasonally adjusted unemployment rate for Louisiana decreased to 5.1 percent from the August 2017 rate of 5.2 percent. The national unemployment rate for September of 2017 decreased to 4.2 percent from the August rate of 4.4 percent. Total unemployment in the state for September was 105,829. The state civilian labor force increased to 2,083,447, with an increase in total employment to 1,977,618.

Seasonally Adjusted	United States	Louisiana
Civilian Labor Force	SEPT 2017	SEPT 2017
Labor Force	161,146,000	2,083,447
Employed	154,345,000	1,977,618
Unemployed	6,801,000	105,829
Unemployment Rate	4.2	5.1
Nonfarm Wage and Salary Employment	SEPT 2017	SEPT 2017
Total Nonfarm	146,659,000	1,980,400
Mining and Logging	721,000	36,300
Construction	6,911,000	153,100
Manufacturing	12,447,000	134,300
Trade, Transportation, and Utilities	27,405,000	381,600
Information	2,707,000	22,000
Financial Activities	8,473,000	92,300
Professional and Business Services	20,807,000	207,700
Education and Health Services	23,217,000	316,300
Leisure and Hospitality	15,873,000	238,100
Other Services	5,761,000	77,800
Government	22,337,000	320,900

All Employees Average Hours & Earnings

(Not Seasonally Adjusted)

	SEPT 2017	SEPT 2017
Construction	United States	Louisiana
Average Weekly Earnings	\$ 1,152.45	\$ 1,078.05
Average Weekly Hours	39.4	41.1
Average Hourly Wages	\$ 29.25	\$ 26.23
Manufacturing		
Average Weekly Earnings	\$ 1,085.28	\$ 1,118.42
Average Weekly Hours	40.8	43.4
Average Hourly Wages	\$ 26.60	\$ 25.77

Louisiana Unemployment Insurance Activities

Claims	SEPT 2017
Initial New & Renewals	8,016
Continued Weekly Intrastate Only	56,471
Insured Unemployment Rate	1.2

United States Consumer Price Index

	SEPT 2017
All Urban Consumers	246.8



The civilian labor force and nonfarm **estimates** are prepared according to Bureau of Labor Statistics (BLS) methodology and are comparable with the U.S. and other states' data. For more information, go to page 20.

Economic Comparison

Seasonally Adjusted	United States			Louisiana		
Civilian Labor Force	SEPT 2017	AUG 2017	SEPT 2016	SEPT 2017	AUG 2017	SEPT 2016
Labor Force	161,146,000	160,571,000	159,830,000	2,083,447	2,082,352	2,108,789
Employed	154,345,000	153,439,000	151,926,000	1,977,618	1,974,878	1,979,961
Unemployed	6,801,000	7,132,000	7,904,000	105,829	107,474	128,828
Unemployment Rate	4.2	4.4	4.9	5.1	5.2	6.1
Nonfarm Wage and Salary Employment	SEPT 2017	AUG 2017	SEPT 2016	SEPT 2017	AUG 2017	SEPT 2016
Total Nonfarm	146,659,000	146,692,000	144,882,000	1,980,400	1,983,200	1,965,700
Mining and Logging	721,000	719,000	661,000	36,300	36,400	36,900
Construction	6,911,000	6,903,000	6,727,000	153,100	152,900	138,400
Manufacturing	12,447,000	12,448,000	12,330,000	134,300	134,600	134,400
Trade, Transportation, and Utilities	27,405,000	27,379,000	27,322,000	381,600	380,700	386,900
Information	2,707,000	2,716,000	2,786,000	22,000	22,100	23,300
Financial Activities	8,473,000	8,463,000	8,324,000	92,300	93,300	92,200
Professional and Business Services	20,807,000	20,794,000	20,279,000	207,700	211,000	209,900
Education and Health Services	23,217,000	23,190,000	22,745,000	316,300	316,800	310,400
Leisure and Hospitality	15,873,000	15,984,000	15,684,000	238,100	237,200	231,300
Other Services	5,761,000	5,766,000	5,708,000	77,800	76,800	75,200
Government	22,337,000	22,330,000	22,316,000	320,900	321,400	326,800
All Employees Average Hours & Earnings						
Construction	United States (Not Seasonally Adjusted)			Louisiana (Not Seasonally Adjusted)		
	SEPT 2017	AUG 2017	SEPT 2016	SEPT 2017	AUG 2017	SEPT 2016
Average Weekly Earnings	\$ 1,152.45	\$ 1,150.11	\$ 1,120.68	\$ 1,078.05	\$ 1,053.57	\$ 1,094.49
Average Weekly Hours	39.4	39.7	39.6	41.1	40.6	41.1
Average Hourly Wages	\$ 29.25	\$ 28.97	\$ 28.30	\$ 26.23	\$ 25.95	\$ 26.63
Manufacturing						
	SEPT 2017	AUG 2017	SEPT 2016	SEPT 2017	AUG 2017	SEPT 2016
Average Weekly Earnings	\$ 1,085.28	\$ 1,077.12	\$ 1,064.06	\$ 1,118.42	\$ 1,093.03	\$ 1,043.19
Average Weekly Hours	40.8	40.8	40.8	43.4	42.3	40.2
Average Hourly Wages	\$ 26.60	\$ 26.40	\$ 26.08	\$ 25.77	\$ 25.84	\$ 25.95
Louisiana Unemployment Insurance Activities						
Claims				% Change From		
		SEPT 2017	AUG 2017	SEPT 2016	AUG 2017	SEPT 2016
Initial New & Renewals		8,016	9,956	9,549	-19.5	-16.1
Continued Weekly Intrastate Only		56,471	74,448	56,986	-24.1	-0.9
Insured Unemployment Rate*		1.2	1.2	1.4	-3.2	-16.7
*Insured unemployment rate is for the week including the 12th of the month.						
United States Consumer Price Index (Not Seasonally Adjusted)						
	SEPT 2017	% Change From:		AUG 2017	% Change From:	
	Index	Prior Month	Prior Year	Index	Prior Month	Prior Year
All Urban Consumers	246.8	0.5	2.2	245.5	0.3	1.9

STATEWIDE

Louisiana's total nonfarm not seasonally adjusted employment was estimated at 1,980,700 for September 2017. The estimate represents a gain of 7,300 jobs over the month and an increase of 13,400 jobs from September 2016. The series has gained jobs over the year for five consecutive months.

The total private employment figure was estimated at 1,659,000 in September 2017. Private sector employment showed an over-the-month decrease of 3,100 jobs but a gain of 18,500 jobs from September 2016. This series has lost jobs over the month for three straight months, but has added jobs over the year for five straight months.

Over the month the largest increase was seen the government sector which added 10,400 jobs. State government rose by 5,400 and local government by 4,800 jobs in the traditional pattern seen when schools return from summer break. Construction rose by 2,200 jobs to a new series high for employment with 155,500 jobs. Construction has added jobs in four of the last five months. Education and health services also reached a record employment level, adding 1,000 jobs for a total of 317,400. The educational services subsector added 1,500 jobs. The largest decline over the month was seen in the professional and business services sector, which lost 1,900 jobs. The series has lost jobs in three of the last four months. Leisure and hospitality declined by 1,200 jobs, its third consecutive loss over the month, with the amusement, gambling, and recreation industries subsector losing 1,300 jobs. Financial activities lost 1,100 jobs from August, with the real estate and rental and leasing subsector losing 600 jobs. It is the first monthly loss for financial activities since March 2017. Trade, transportation, and utilities decreased by 900 jobs, its third straight decline, as retail trade lost 700 jobs. Manufacturing showed 600 fewer jobs than in August, also showing three straight months of losses. Information lost 500 jobs while other services lost 100 jobs. Mining and logging showed no change over the month.

The largest over-the-year gain was seen in the construction sector which added 13,800 jobs. This is its ninth consecutive month with an over-the-year gain, led by a 9,600 job increase in construction of buildings. Heavy and civil engineering construction also added 6,600 jobs. Leisure and hospitality added 6,000 jobs with the food services and drinking places subsector increasing by 5,000 jobs. Education and health services added 5,300 jobs over the year and has added jobs over the year every month beginning with the October 2006 figure. Health care and social assistance was responsible for 4,400 of the 5,300 jobs gained, while education services rose by 900. Other services increased by 2,100 jobs for its eighth straight over-the-year gain. Financial activities showed no change. The largest decline over the year was seen in the trade, transportation, and utilities sector, which declined by 6,000 jobs, its 24th straight over-the-year loss. The transportation, warehousing and utilities subsector lost 3,200 jobs while retail trade lost 3,600 jobs. Government lost 5,100 jobs with state government falling by 3,100. The government figure is the second lowest for September in series history and the 16th straight over-the-year loss. Professional and business services declined by 1,400 jobs, as the professional, scientific, and technical services subsector lost 2,300 jobs. Information lost 600 jobs over the year while manufacturing lost 500. The mining and logging sector declined by 200 jobs from last year. Mining and logging has lost jobs over the year for 33 consecutive months

ALEXANDRIA

Total nonfarm employment for the Alexandria MSA was estimated at 62,400 for September 2017. This estimate shows a loss of 100 jobs over the month and a loss of 600 jobs over the year. The MSA has dropped jobs over the year for 14 consecutive months. Trade, transportation, and utilities lost 400 jobs over the year.

BATON ROUGE

Total nonfarm employment for the Baton Rouge MSA was estimated at 411,600 for September 2017. The estimate shows a gain of 4,900 jobs over the month and an increase of 6,200 jobs over the year. The over-the-year gain is the ninth in a row. Over the month, construction added 2,900 jobs, government added 2,300 jobs, and professional and business services added 500 jobs. Over the year, construction increased by 4,600 jobs, leisure and hospitality added 3,000 jobs and education and health services added 2,800 jobs. Trade, transportation, and utilities dropped by 1,400 jobs, its 12th consecutive loss over the year, while government showed 3,100 fewer jobs as state government lost 2,700 jobs.

HAMMOND

The Hammond MSA total nonfarm employment was estimated at 45,600 for September 2017. This figure shows a gain of 100 jobs over the month and a gain of 100 jobs over the year. Goods producing employment showed a loss of 100 over the month and a loss of 200 jobs over the year. Service providing employment added 200 jobs over the month and added 300 jobs over the year.

HOUMA

Total nonfarm employment in the Houma MSA was estimated at 85,100 for September 2017. This shows a loss of 900 jobs over the month and a decline of 2,300 jobs over the year. Trade, transportation, and utilities lost 2,900 jobs over the year. Mining and logging lost 100 jobs over the year, its 32nd consecutive month with an over-the-year loss.

LAFAYETTE

Total nonfarm employment for the Lafayette MSA was estimated at 198,600 for September 2017. This shows a loss of 300 jobs over the month and a loss of 1,300 jobs over the year. The MSA has lost jobs over the year for 32 consecutive months. Over the month, government added 400 jobs, while construction, manufacturing, and leisure and hospitality all lost 200 jobs. Over the year, manufacturing added 600 jobs while leisure and hospitality increased by 300. Mining and logging lost 700 jobs over the year for its 33rd consecutive month with an over-the-year loss. Professional and business services lost 500 jobs, its 31st consecutive loss.

LAKE CHARLES

Total nonfarm employment for the Lake Charles MSA was estimated at 114,800 for September 2017. This shows a gain of 200 jobs over the month and a gain of 4,500 jobs over the year. It is the 75th consecutive month with an over-the-year increase and a new series high. The construction sector showed a gain of 300 jobs over the month and added 4,000 jobs over the year. This is construction's 24th consecutive month with an over-the-year increase. Leisure and hospitality added 400 jobs over the year while trade, transportation, and utilities added 300.

MONROE

Total nonfarm employment for the Monroe MSA was estimated at 79,200 for September 2017. This shows a loss of 100 jobs over the month but a gain of 300 jobs over the year. Government added 500 jobs over the month. Education and health services added 300 jobs over the year while government lost 400 jobs over the year, as state government lost 400 jobs.

NEW ORLEANS

Total nonfarm employment for the New Orleans MSA was estimated at 575,700 for September 2017. This shows a gain of 1,200 jobs over the month and a gain of 600 jobs over the year. Over the month, government added 1,300 jobs and education and health services added 500. Over the year, construction added 1,800 jobs. The professional and business services sector, the education and health sector, and the leisure and hospitality sector each added 1,000 jobs over the year. Government lost 3,300 jobs over the year as local government declined by 2,600 jobs.

SHREVEPORT

Total nonfarm employment for the Shreveport MSA was estimated at 178,500 for September 2017. This shows a gain of 400 jobs over the month but a loss of 1,400 jobs over the year. This is the 29th consecutive month with an over-the-year loss. Over the month, trade, transportation, and utilities added 600 jobs while government added 300 jobs. Over the year government declined by 1,300 jobs, while mining and logging lost 600 jobs.

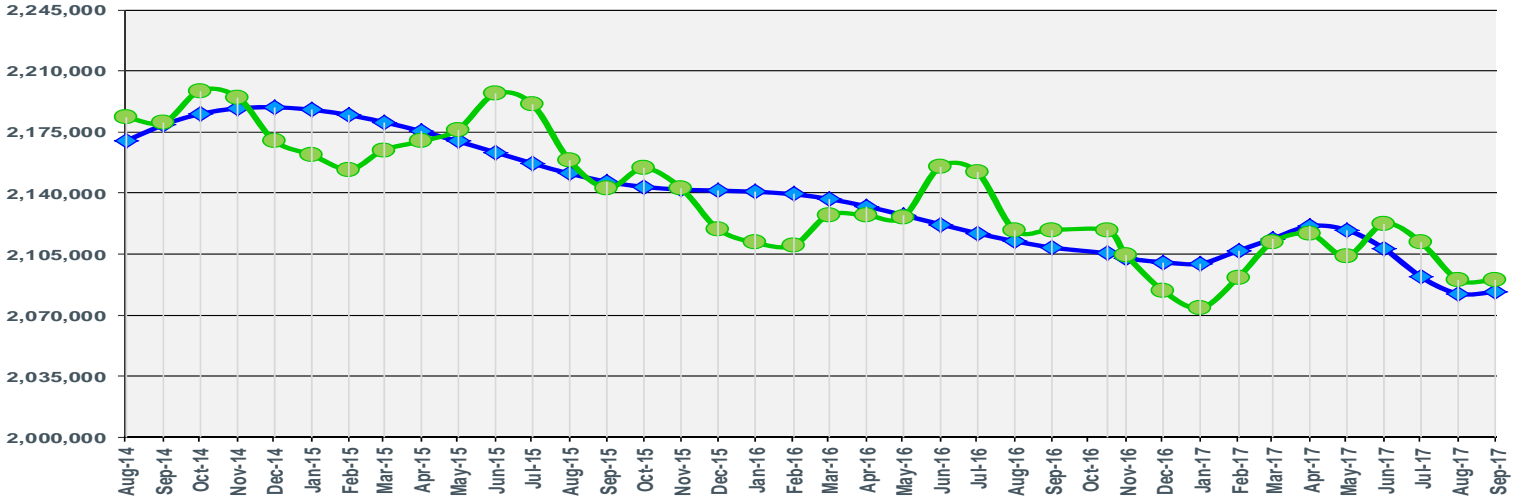
**September
2017**

Seasonally Adjusted
2,083,447
Over the Month: 1,095
Over the Year: -25,342

Louisiana Civilian Labor Force

Not Seasonally Adjusted
2,090,429
Over the Month: 130
Over the Year: -28,520

Seasonally Adjusted Not Seasonally Adjusted



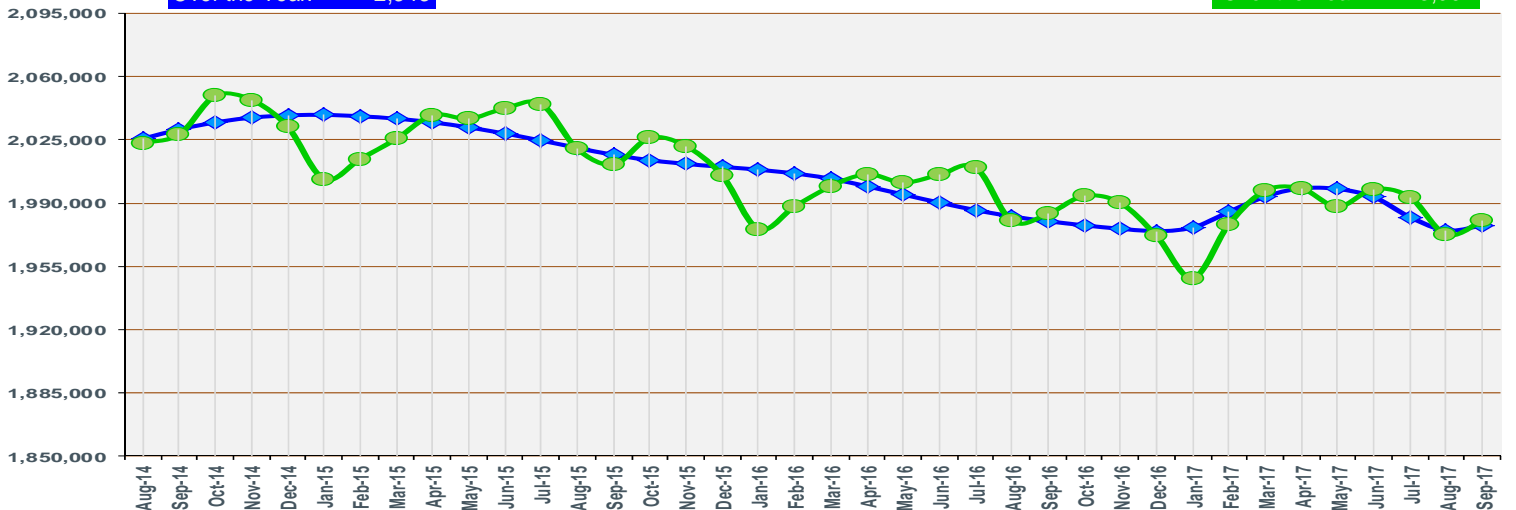
**September
2017**

Seasonally Adjusted
1,977,618
Over the Month: 2,740
Over the Year: -2,343

Louisiana Civilian Labor Force Employment

Not Seasonally Adjusted
1,980,073
Over the Month: 7,643
Over the Year: -3,994

Seasonally Adjusted Not Seasonally Adjusted



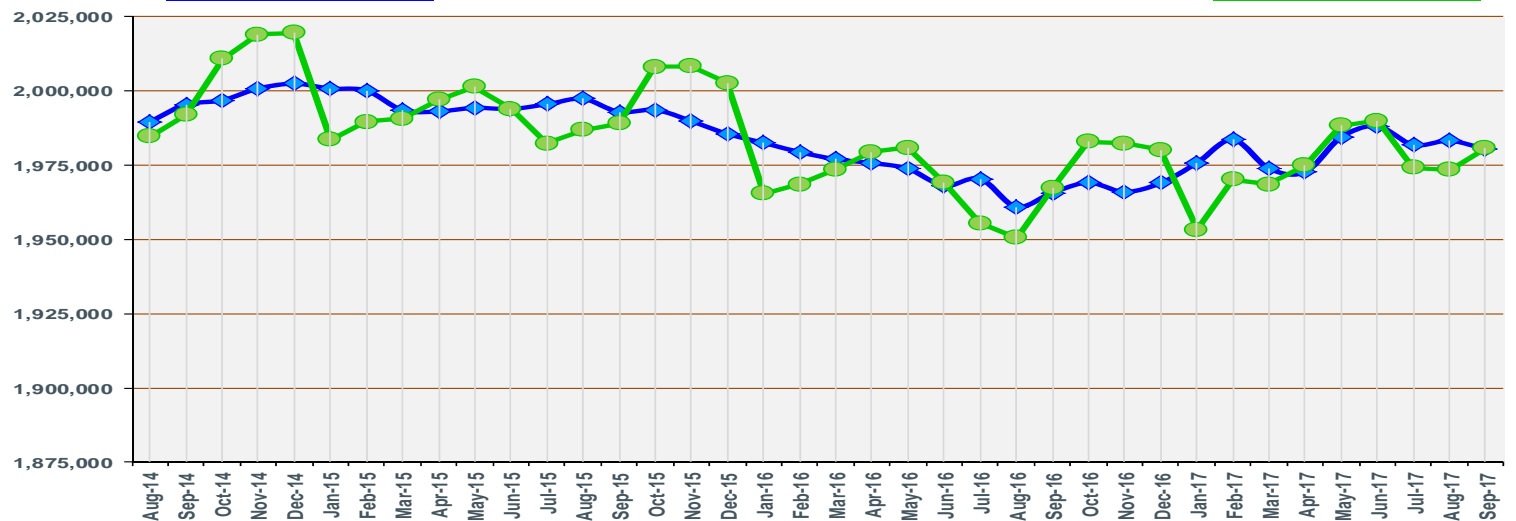
**September
2017**

Seasonally Adjusted
1,980,400
Over the Month: -2,800
Over the Year: 14,700

Louisiana Nonfarm Employment

Not Seasonally Adjusted
1,980,700
Over the Month: 7,300
Over the Year: 13,400

Seasonally Adjusted Not Seasonally Adjusted

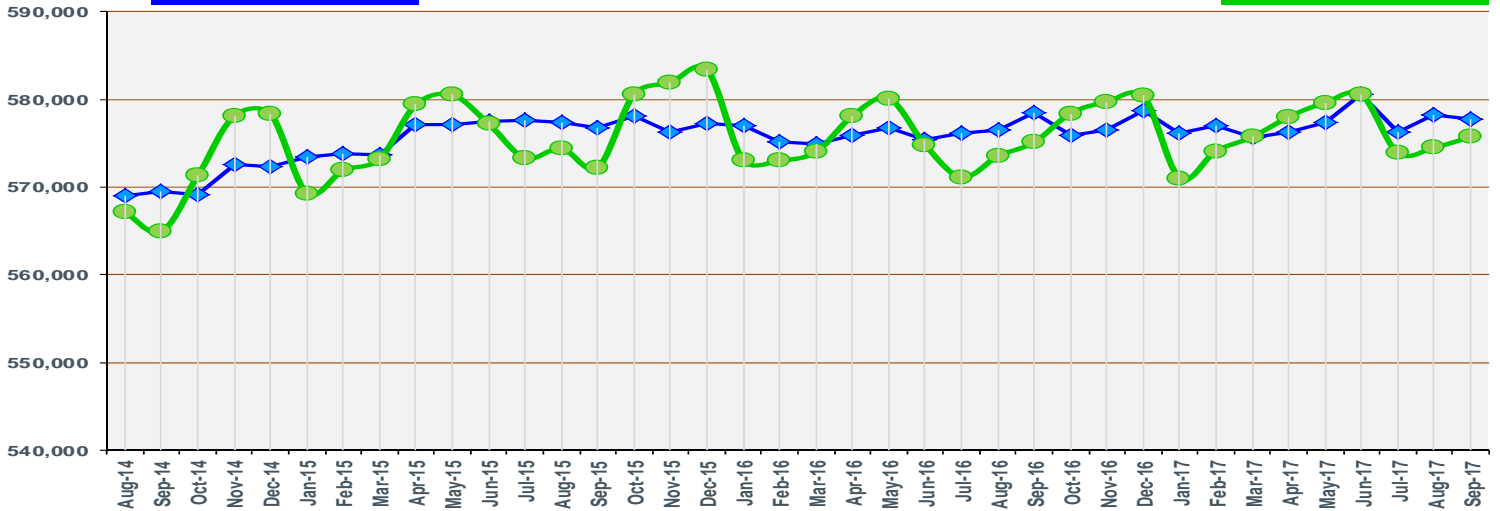


September
2017

Seasonally Adjusted
577,700
Over the Month: -500
Over the Year: -800

New Orleans MSA Nonfarm Employment

Not Seasonally Adjusted
575,700
Over the Month: 1,200
Over the Year: 600

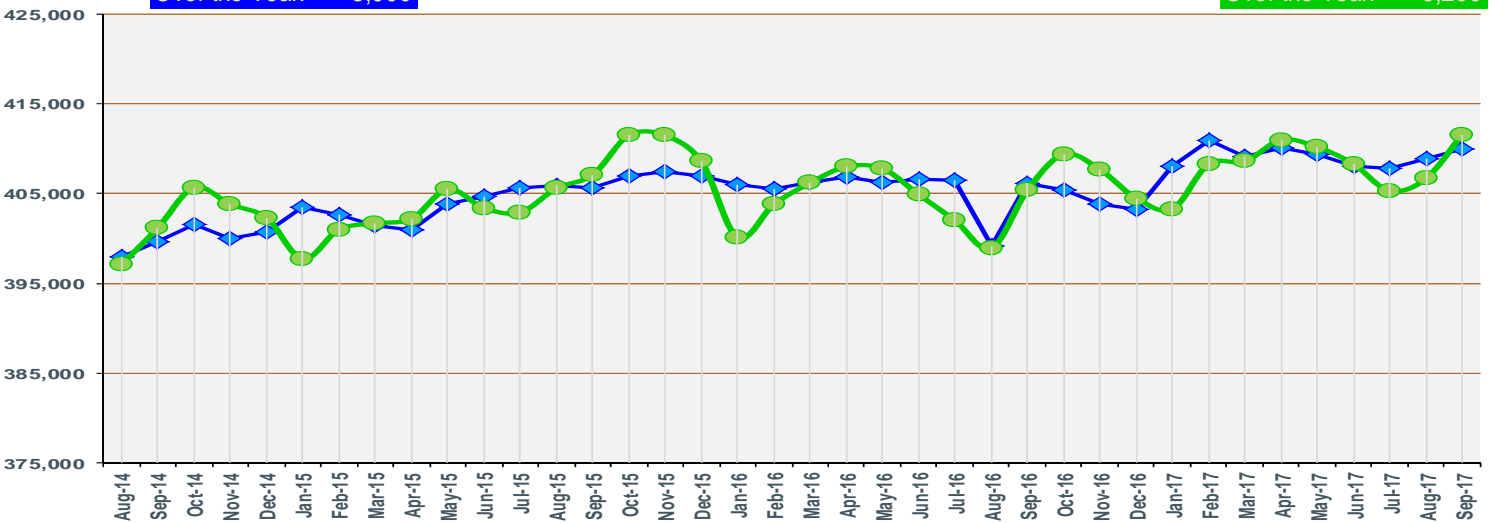
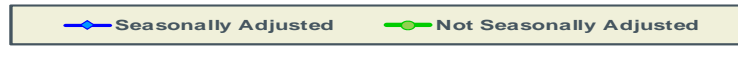


September
2017

Seasonally Adjusted
410,000
Over the Month: 1,100
Over the Year: 3,900

Baton Rouge MSA Nonfarm Employment

Not Seasonally Adjusted
411,600
Over the Month: 4,900
Over the Year: 6,200

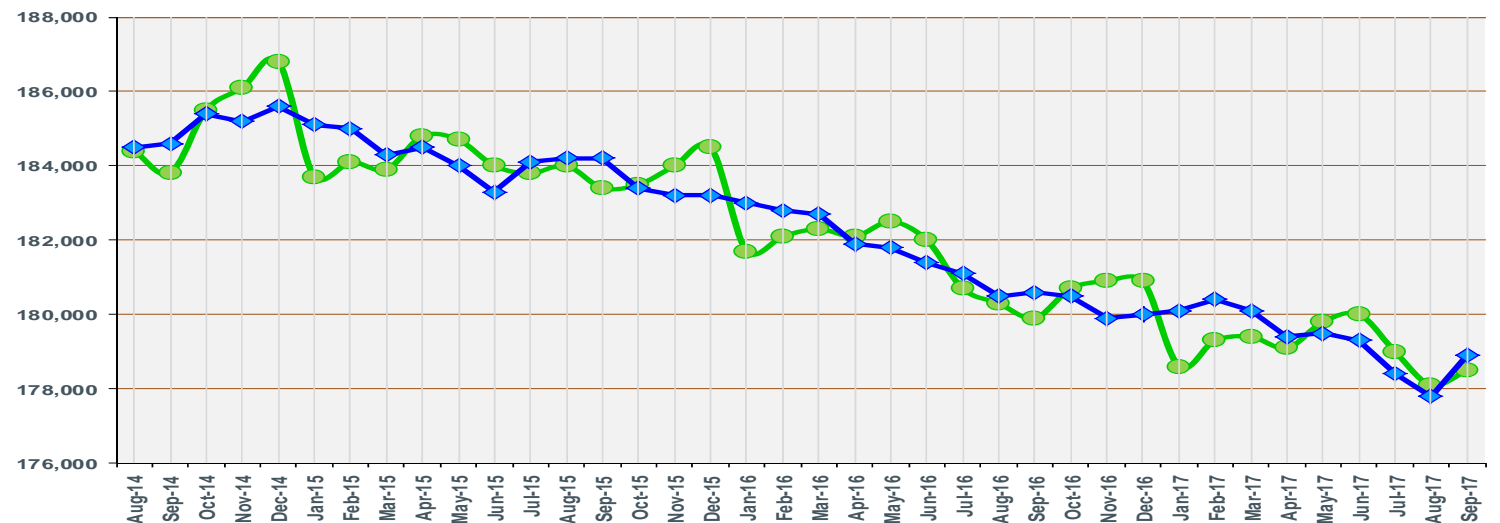
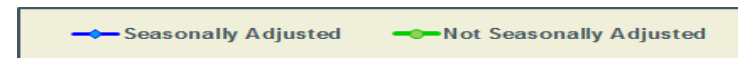


September
2017

Seasonally Adjusted
178,900
Over the Month: 1,100
Over the Year: -1,700

Shreveport MSA Nonfarm Employment

Not Seasonally Adjusted
178,500
Over the Month: 400
Over the Year: -1,400

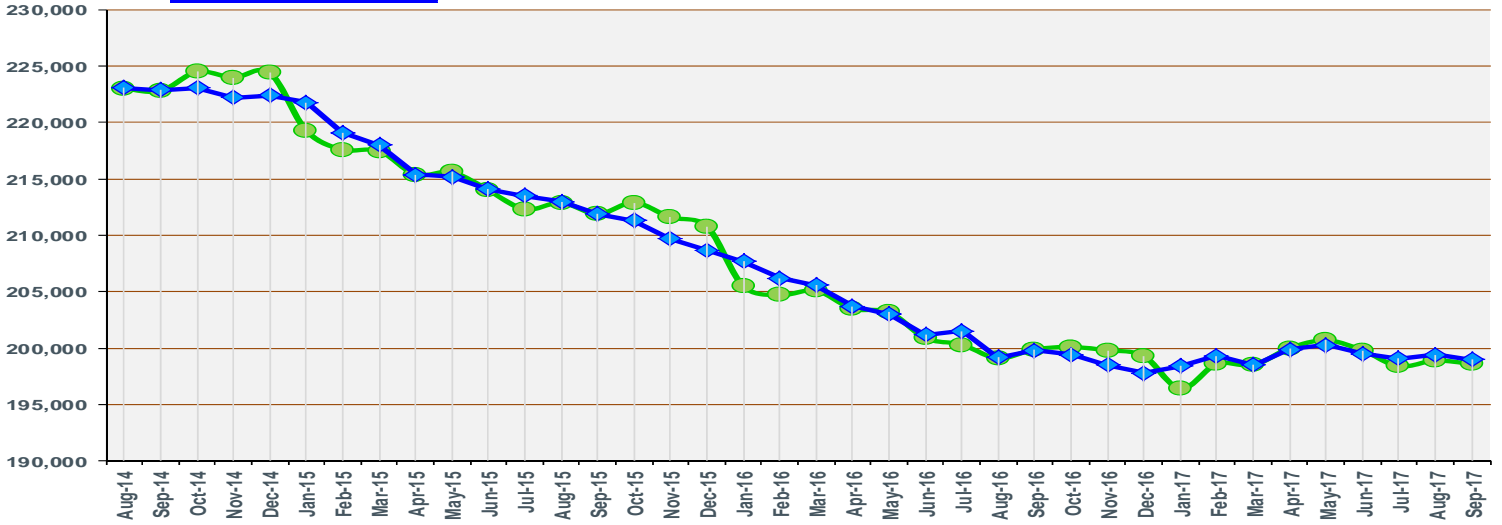
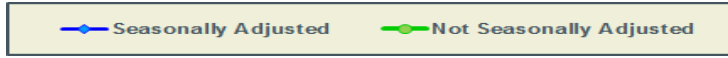


September
2017

Seasonally Adjusted
199,000
Over the Month: -400
Over the Year: -800

Lafayette MSA Nonfarm Employment

Not Seasonally Adjusted
198,600
Over the Month: -300
Over the Year: -1,300

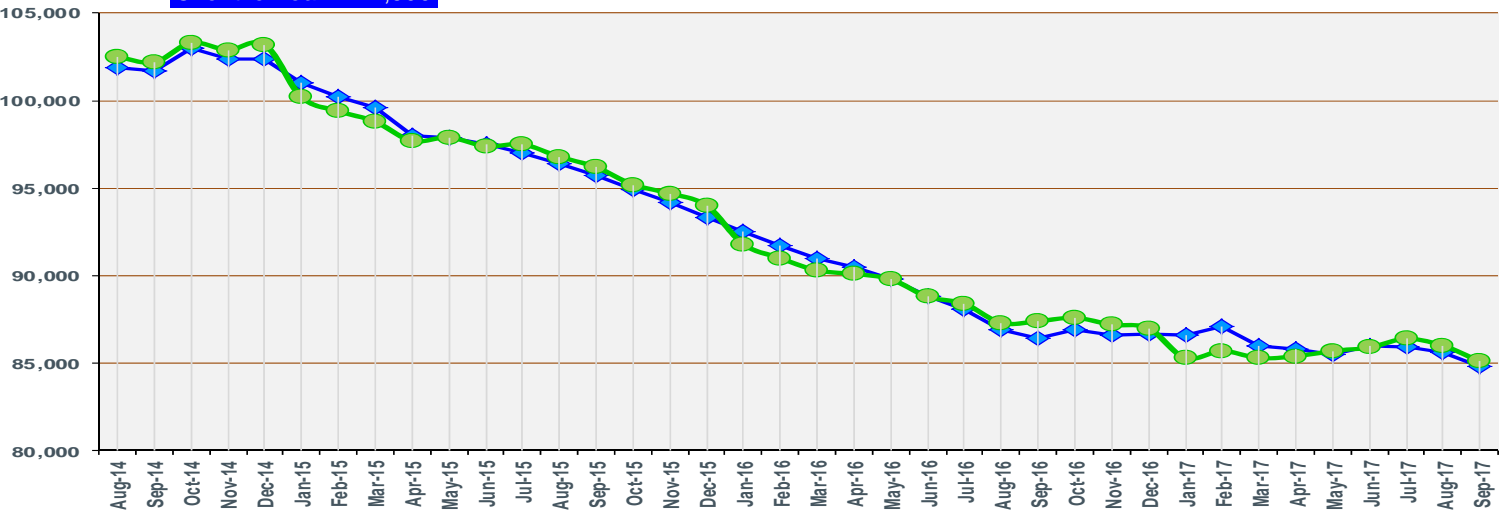
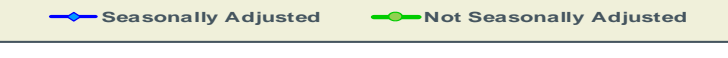


September
2017

Seasonally Adjusted
84,800
Over the Month: -800
Over the Year: -1,600

Houma MSA Nonfarm Employment

Not Seasonally Adjusted
85,100
Over the Month: -900
Over the Year: -2,300

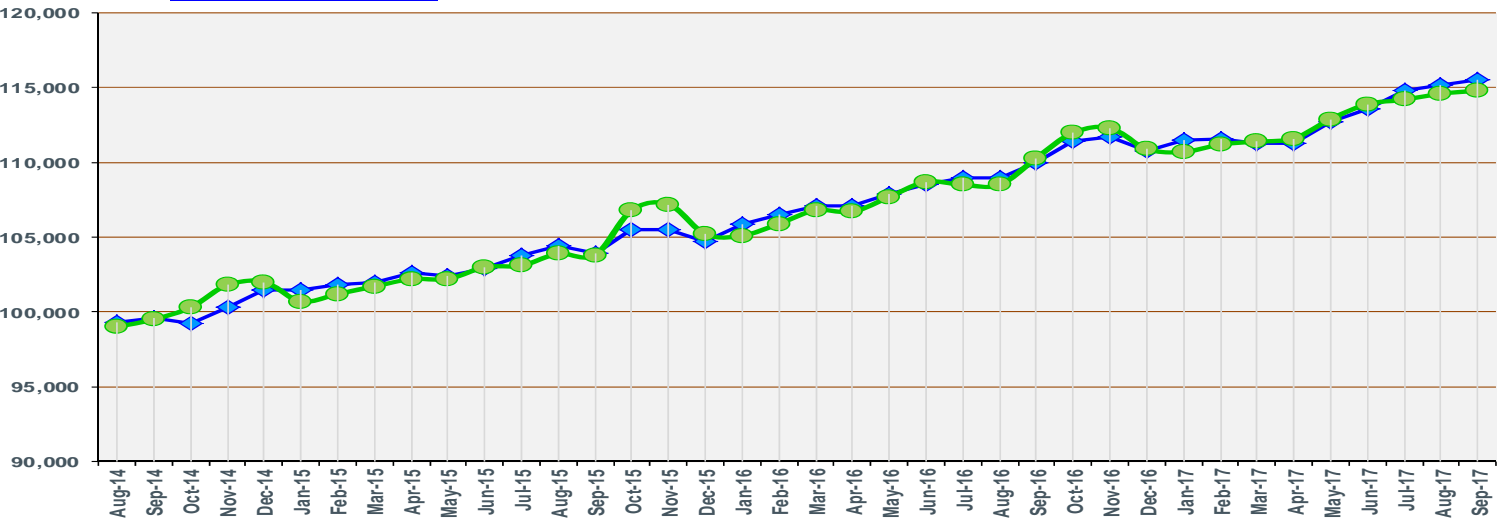
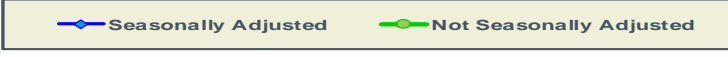


September
2017

Seasonally Adjusted
115,500
Over the Month: 300
Over the Year: 5,500

Lake Charles MSA Nonfarm Employment

Not Seasonally Adjusted
114,800
Over the Month: 200
Over the Year: 4,500

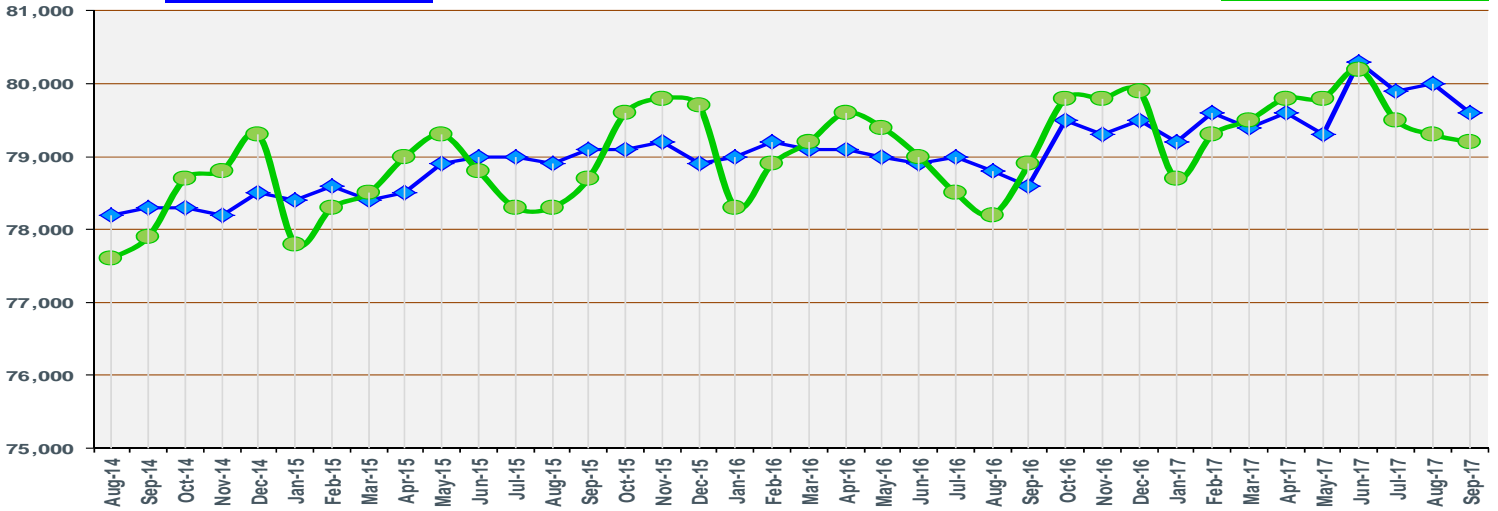
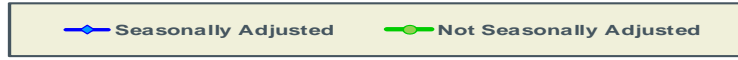


September
2017

Seasonally Adjusted
79,600
Over the Month: -400
Over the Year: 1,000

Monroe MSA Nonfarm Employment

Not Seasonally Adjusted
79,200
Over the Month: -100
Over the Year: 300

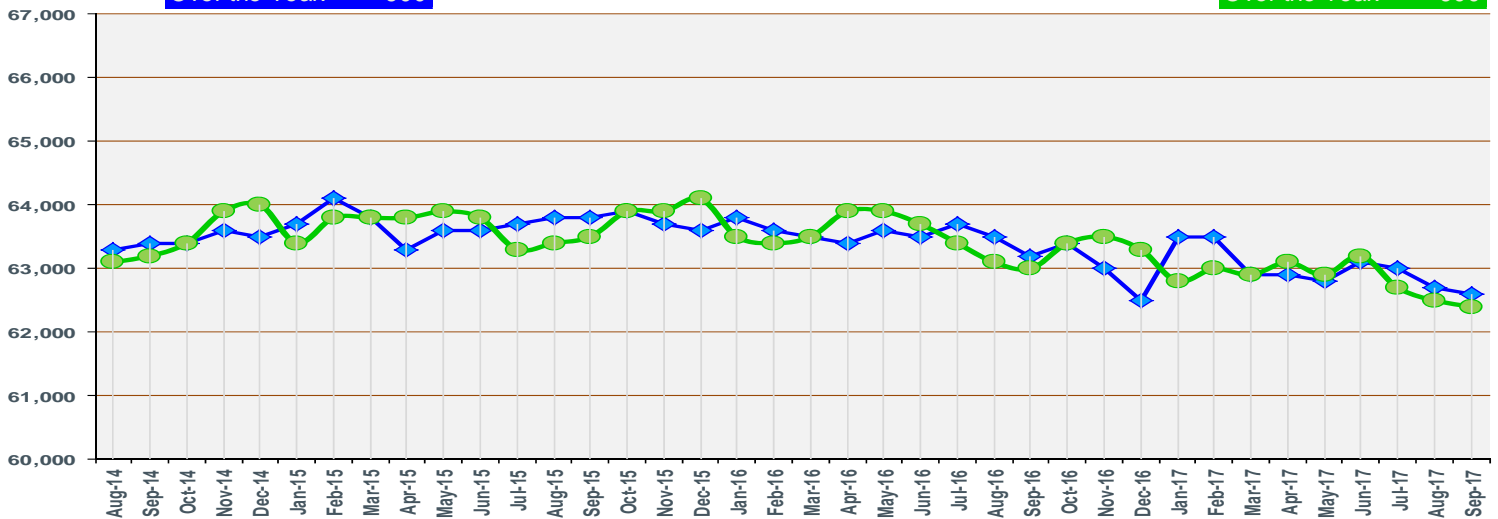
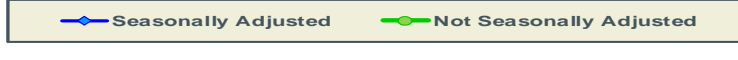


September
2017

Seasonally Adjusted
62,600
Over the Month: -100
Over the Year: -600

Alexandria MSA Nonfarm Employment

Not Seasonally Adjusted
62,400
Over the Month: -100
Over the Year: -600

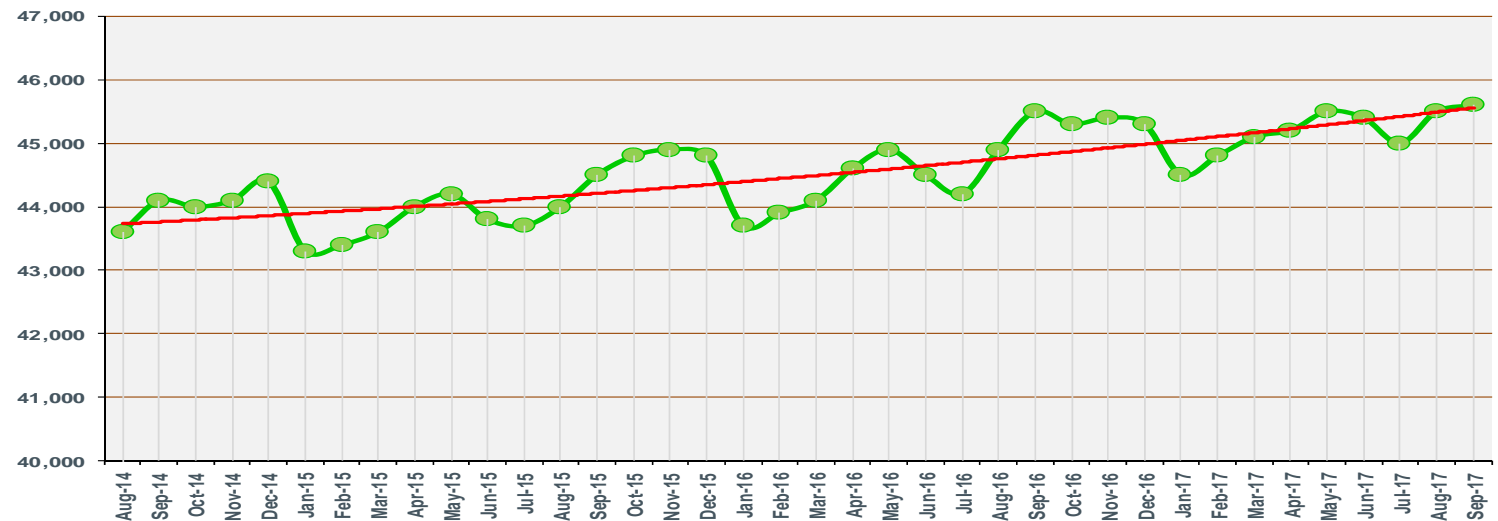


September
2017

The Bureau of Labor
Statistics is not currently
publishing Seasonally
Adjusted for this MSA.

Hammond MSA Nonfarm Employment

Not Seasonally Adjusted
45,600
Over the Month: 100
Over the Year: 100



<i>Louisiana - Seasonally Adjusted</i>	Prel.	Rev.		OTM	OTM	OTY	OTY
	Sept 2017	Aug 2017	Sept 2016	Change	% Change	Change	% Change
Total Nonfarm	1,980,400	1,983,200	1,965,700	-2,800	-0.14%	14,700	0.75%
Total Private	1,659,500	1,661,800	1,638,900	-2,300	-0.14%	20,600	1.26%
Goods-Producing	323,700	323,900	309,700	-200	-0.06%	14,000	4.52%
Mining and Logging	36,300	36,400	36,900	-100	-0.27%	-600	-1.63%
Mining, Logging, and Construction	189,400	189,300	175,300	100	0.05%	14,100	8.04%
Construction	153,100	152,900	138,400	200	0.13%	14,700	10.62%
Manufacturing	134,300	134,600	134,400	-300	-0.22%	-100	-0.07%
Durable Goods	62,800	62,600	63,700	200	0.32%	-900	-1.41%
Nondurable Goods	71,500	72,000	70,700	-500	-0.69%	800	1.13%
Service-Providing	1,656,700	1,659,300	1,656,000	-2,600	-0.16%	700	0.04%
Private Service-Providing	1,335,800	1,337,900	1,329,200	-2,100	-0.16%	6,600	0.50%
Trade, Transportation, and Utilities	381,600	380,700	386,900	900	0.24%	-5,300	-1.37%
Wholesale Trade	70,900	71,000	70,200	-100	-0.14%	700	1.00%
Retail Trade	231,200	231,000	235,000	200	0.09%	-3,800	-1.62%
Transportation, Warehousing, and Utilities	79,500	78,700	81,700	800	1.02%	-2,200	-2.69%
Information	22,000	22,100	23,300	-100	-0.45%	-1,300	-5.58%
Financial Activities	92,300	93,300	92,200	-1,000	-1.07%	100	0.11%
Real Estate and Rental and Leasing	29,600	30,200	29,900	-600	-1.99%	-300	-1.00%
Professional and Business Services	207,700	211,000	209,900	-3,300	-1.56%	-2,200	-1.05%
Professional, Scientific, and Technical Services	82,300	82,700	85,500	-400	-0.48%	-3,200	-3.74%
Management of Companies and Enterprises	22,900	23,000	23,200	-100	-0.43%	-300	-1.29%
Admin. and Support and Waste Mgmt. and Remediation Serv.	102,500	105,300	101,200	-2,800	-2.66%	1,300	1.28%
Education and Health Services	316,300	316,800	310,400	-500	-0.16%	5,900	1.90%
Educational Services	48,400	48,500	46,600	-100	-0.21%	1,800	3.86%
Health Care and Social Assistance	267,900	268,300	263,800	-400	-0.15%	4,100	1.55%
Leisure and Hospitality	238,100	237,200	231,300	900	0.38%	6,800	2.94%
Arts, Entertainment, and Recreation	30,200	29,600	29,300	600	2.03%	900	3.07%
Accommodation and Food Services	207,900	207,600	202,000	300	0.14%	5,900	2.92%
Other Services	77,800	76,800	75,200	1,000	1.30%	2,600	3.46%
Government	320,900	321,400	326,800	-500	-0.16%	-5,900	-1.81%
Federal Government	31,400	31,200	30,900	200	0.64%	500	1.62%
State Government	84,900	85,000	88,500	-100	-0.12%	-3,600	-4.07%
Local Government	204,600	205,200	207,400	-600	-0.29%	-2,800	-1.35%
<i>MSAs - Seasonally Adjusted</i>	Prel. Sept 2017	Rev. Aug 2017	Sept 2016	OTM Change	OTM % Change	OTY Change	OTY % Change
Alexandria Total Nonfarm	62,600	62,700	63,200	-100	-0.16%	-600	-0.95%
Baton Rouge Total Nonfarm	410,000	408,900	406,100	1,100	0.27%	3,900	0.96%
Houma Total Nonfarm	84,800	85,600	86,400	-800	-0.93%	-1,600	-1.85%
Lafayette Total Nonfarm	199,000	199,400	199,800	-400	-0.20%	-800	-0.40%
Lake Charles Total Nonfarm	115,500	115,200	110,000	300	0.26%	5,500	5.00%
Monroe Total Nonfarm	79,600	80,000	78,600	-400	-0.50%	1,000	1.27%
New Orleans Total Nonfarm	577,700	578,200	578,500	-500	-0.09%	-800	-0.14%
Shreveport Total Nonfarm	178,900	177,800	180,600	1,100	0.62%	-1,700	-0.94%

<i>Louisiana - Not Seasonally Adjusted</i>	Prel.	Rev.		OTM	OTM	OTY	OTY
	Sept 2017	Aug 2017	Sept 2016	Change	% Change	Change	% Change
Total Nonfarm	1,980,700	1,973,400	1,967,300	7,300	0.37%	13,400	0.68%
Total Private	1,659,000	1,662,100	1,640,500	-3,100	-0.19%	18,500	1.13%
Goods-Producing	326,700	325,100	313,600	1,600	0.49%	13,100	4.18%
Mining & Logging	36,900	36,900	37,100	0	0.00%	-200	-0.54%
Oil & Gas Extraction	7,800	7,900	7,800	-100	-1.27%	0	0.00%
Crude Petroleum & Natural Gas Extraction	6,400	6,300	7,200	100	1.59%	-800	-11.11%
Support Activities for Mining	24,300	24,400	25,300	-100	-0.41%	-1,000	-3.95%
Drilling Oil & Gas Wells	2,700	2,700	2,900	0	0.00%	-200	-6.90%
Mining, Logging, & Construction	192,400	190,200	178,800	2,200	1.16%	13,600	7.61%
Construction	155,500	153,300	141,700	2,200	1.44%	13,800	9.74%
Construction of Buildings	40,300	39,700	30,700	600	1.51%	9,600	31.27%
Residential Building Construction	5,700	5,700	5,500	0	0.00%	200	3.64%
Nonresidential Building Construction	34,600	34,000	25,200	600	1.76%	9,400	37.30%
Heavy & Civil Engineering Construction	52,200	50,600	45,600	1,600	3.16%	6,600	14.47%
Specialty Trade Contractors	63,000	63,000	65,400	0	0.00%	-2,400	-3.67%
Manufacturing	134,300	134,900	134,800	-600	-0.44%	-500	-0.37%
Durable Goods	62,600	62,900	63,900	-300	-0.48%	-1,300	-2.03%
Transportation Equipment Manufacturing	8,800	8,900	9,900	-100	-1.12%	-1,100	-11.11%
Ship & Boat Building	6,200	6,200	6,200	0	0.00%	0	0.00%
Nondurable Goods	71,700	72,000	70,900	-300	-0.42%	800	1.13%
Food Manufacturing	15,800	15,700	15,800	100	0.64%	0	0.00%
Paper Manufacturing	6,900	6,900	7,100	0	0.00%	-200	-2.82%
Petroleum & Coal Products Manufacturing	11,700	11,700	11,800	0	0.00%	-100	-0.85%
Chemical Manufacturing	25,600	25,600	25,500	0	0.00%	100	0.39%
Basic Chemical Manufacturing	13,800	13,900	13,600	-100	-0.72%	200	1.47%
Service-Providing	1,654,000	1,648,300	1,653,700	5,700	0.35%	300	0.02%
Private Service-Providing	1,332,300	1,337,000	1,326,900	-4,700	-0.35%	5,400	0.41%
Trade, Transportation, & Utilities	378,600	379,500	384,600	-900	-0.24%	-6,000	-1.56%
Wholesale Trade	71,200	71,300	70,400	-100	-0.14%	800	1.14%
Merchant Wholesalers, Durable Goods	37,700	37,800	36,300	-100	-0.26%	1,400	3.86%
Merchant Wholesalers, Nondurable Goods	25,100	25,100	25,500	0	0.00%	-400	-1.57%
Retail Trade	228,800	229,500	232,400	-700	-0.31%	-3,600	-1.55%
Motor Vehicle & Parts Dealers	30,200	30,200	29,800	0	0.00%	400	1.34%
Building Material & Garden Equipment & Supplies Dealers	20,500	20,400	20,300	100	0.49%	200	0.99%
Food & Beverage Stores	39,500	39,600	39,100	-100	-0.25%	400	1.02%
Grocery Stores	35,400	35,500	34,500	-100	-0.28%	900	2.61%
Health & Personal Care Stores	17,100	17,000	17,100	100	0.59%	0	0.00%
Gasoline Stations	20,200	20,300	20,100	-100	-0.49%	100	0.50%
Clothing and Clothing Accessories Stores	17,100	17,500	17,400	-400	-2.29%	-300	-1.72%
General Merchandise Stores	56,700	56,800	54,500	-100	-0.18%	2,200	4.04%
Department Stores	9,800	9,900	10,400	-100	-1.01%	-600	-5.77%
Transportation, Warehousing, & Utilities	78,600	78,700	81,800	-100	-0.13%	-3,200	-3.91%
Transportation and Warehousing	70,000	70,200	73,400	-200	-0.28%	-3,400	-4.63%
Truck Transportation	16,700	16,800	17,100	-100	-0.60%	-400	-2.34%
Support Activities for Transportation	18,500	18,700	18,800	-200	-1.07%	-300	-1.60%

<i>Louisiana - Not Seasonally Adjusted</i>	Prel.	Rev.		OTM	OTM	OTY	OTY
	Sept	Aug	Sept	Change	%	Change	%
	2017	2017	2016		Change		Change
Information	21,400	21,900	22,000	-500	-2.28%	-600	-2.73%
Telecommunications	8,500	8,600	9,100	-100	-1.16%	-600	-6.59%
Financial Activities	92,400	93,500	92,400	-1,100	-1.18%	0	0.00%
Finance & Insurance	62,600	63,100	62,300	-500	-0.79%	300	0.48%
Credit Intermediation & Related Activities	30,200	30,300	30,200	-100	-0.33%	0	0.00%
Depository Credit Intermediation	21,300	21,200	21,200	100	0.47%	100	0.47%
Insurance Carriers & Related Activities	28,800	28,900	28,200	-100	-0.35%	600	2.13%
Real Estate & Rental & Leasing	29,800	30,400	30,100	-600	-1.97%	-300	-1.00%
Professional & Business Services	209,400	211,300	210,800	-1,900	-0.90%	-1,400	-0.66%
Professional, Scientific, & Technical Services	82,300	82,500	84,600	-200	-0.24%	-2,300	-2.72%
Legal Services	17,700	17,600	18,500	100	0.57%	-800	-4.32%
Accounting, Tax Preparation, Bookkeeping & Payroll Services	10,500	10,500	10,500	0	0.00%	0	0.00%
Architectural, Engineering, & Related Services	23,300	23,500	23,200	-200	-0.85%	100	0.43%
Management of Companies & Enterprises	23,000	23,100	23,300	-100	-0.43%	-300	-1.29%
Admin. & Support & Waste Mgmt. & Remediation Serv.	104,100	105,700	102,900	-1,600	-1.51%	1,200	1.17%
Administrative & Support Services	95,100	96,500	93,100	-1,400	-1.45%	2,000	2.15%
Employment Services	33,900	34,600	32,700	-700	-2.02%	1,200	3.67%
Services to Buildings & Dwellings	24,400	24,700	23,600	-300	-1.21%	800	3.39%
Education & Health Services	317,400	316,400	312,100	1,000	0.32%	5,300	1.70%
Educational Services	48,500	47,000	47,600	1,500	3.19%	900	1.89%
Colleges, Universities, & Professional Schools	14,300	13,900	14,000	400	2.88%	300	2.14%
Health Care & Social Assistance	268,900	269,400	264,500	-500	-0.19%	4,400	1.66%
Ambulatory Health Care Services	101,700	101,500	99,200	200	0.20%	2,500	2.52%
Offices of Physicians	40,700	40,600	38,900	100	0.25%	1,800	4.63%
Home Health Care Services	20,600	20,700	21,200	-100	-0.48%	-600	-2.83%
Hospitals	80,100	79,900	78,100	200	0.25%	2,000	2.56%
Nursing & Residential Care Facilities	44,400	44,800	42,400	-400	-0.89%	2,000	4.72%
Nursing Care Facilities	27,000	27,100	26,600	-100	-0.37%	400	1.50%
Social Assistance	42,700	43,200	44,800	-500	-1.16%	-2,100	-4.69%
Leisure & Hospitality	236,000	237,200	230,000	-1,200	-0.51%	6,000	2.61%
Arts, Entertainment, & Recreation	30,100	30,600	29,900	-500	-1.63%	200	0.67%
Amusement, Gambling, & Recreation Industries	23,400	24,700	23,000	-1,300	-5.26%	400	1.74%
Gambling Industries	9,700	10,000	10,200	-300	-3.00%	-500	-4.90%
Accommodation & Food Services	205,900	206,600	200,100	-700	-0.34%	5,800	2.90%
Accommodation	34,200	34,500	33,400	-300	-0.87%	800	2.40%
Food Services & Drinking Places	171,700	172,100	166,700	-400	-0.23%	5,000	3.00%
Other Services	77,100	77,200	75,000	-100	-0.13%	2,100	2.80%
Repair & Maintenance	19,600	19,800	19,400	-200	-1.01%	200	1.03%
Automotive Repair & Maintenance	11,200	11,300	11,200	-100	-0.88%	0	0.00%
Personal & Laundry Services	17,300	17,300	17,000	0	0.00%	300	1.76%
Government	321,700	311,300	326,800	10,400	3.34%	-5,100	-1.56%
Federal Government	31,400	31,200	30,900	200	0.64%	500	1.62%
State Government	86,700	81,300	89,800	5,400	6.64%	-3,100	-3.45%
Local Government	203,600	198,800	206,100	4,800	2.41%	-2,500	-1.21%

LOUISIANA & MSAs NONFARM EMPLOYMENT

12

<i>New Orleans-Metairie MSA - Not Seasonally Adjusted</i>	Prel. Sept 2017	Rev. Aug 2017	Sept 2016	OTM Change	OTM % Change	OTY Change	OTY % Change
Total Nonfarm	575,700	574,500	575,100	1,200	0.21%	600	0.10%
Total Private	508,100	508,200	504,200	-100	-0.02%	3,900	0.77%
Goods-Producing	67,200	67,200	64,800	0	0.00%	2,400	3.70%
Mining & Logging	5,200	5,300	5,400	-100	-1.89%	-200	-3.70%
Mining, Logging, & Construction	36,600	36,500	35,000	100	0.27%	1,600	4.57%
Construction	31,400	31,200	29,600	200	0.64%	1,800	6.08%
Heavy & Civil Engineering Construction	6,900	7,000	6,800	-100	-1.43%	100	1.47%
Specialty Trade Contractors	15,400	15,100	16,400	300	1.99%	-1,000	-6.10%
Manufacturing	30,600	30,700	29,800	-100	-0.33%	800	2.68%
Durable Goods	11,300	11,400	11,500	-100	-0.88%	-200	-1.74%
Transportation Equipment Manufacturing	2,300	2,300	2,600	0	0.00%	-300	-11.54%
Ship & Boat Building	1,400	1,400	1,500	0	0.00%	-100	-6.67%
Nondurable Goods	19,300	19,300	18,300	0	0.00%	1,000	5.46%
Chemical Manufacturing	5,400	5,400	5,100	0	0.00%	300	5.88%
Service-Providing	508,500	507,300	510,300	1,200	0.24%	-1,800	-0.35%
Private Service-Providing	440,900	441,000	439,400	-100	-0.02%	1,500	0.34%
Trade, Transportation, & Utilities	114,600	114,700	115,300	-100	-0.09%	-700	-0.61%
Wholesale Trade	22,700	22,800	23,100	-100	-0.44%	-400	-1.73%
Merchant Wholesalers, Durable Goods	10,600	10,600	10,400	0	0.00%	200	1.92%
Merchant Wholesalers, Nondurable Goods	8,600	8,600	8,700	0	0.00%	-100	-1.15%
Retail Trade	63,400	63,100	63,600	300	0.48%	-200	-0.31%
Grocery Stores	10,500	10,500	10,100	0	0.00%	400	3.96%
General Merchandise Stores	14,800	14,800	13,900	0	0.00%	900	6.47%
Transportation, Warehousing, & Utilities	28,500	28,800	28,600	-300	-1.04%	-100	-0.35%
Information	6,300	6,400	6,700	-100	-1.56%	-400	-5.97%
Financial Activities	29,400	29,800	30,300	-400	-1.34%	-900	-2.97%
Finance & Insurance	21,900	22,000	21,700	-100	-0.45%	200	0.92%
Credit Intermediation & Related Activities	8,100	8,100	8,000	0	0.00%	100	1.25%
Depository Credit Intermediation	5,900	6,000	6,000	-100	-1.67%	-100	-1.67%
Professional & Business Services	76,700	76,300	75,700	400	0.52%	1,000	1.32%
Professional, Scientific, & Technical Services	31,700	31,000	31,600	700	2.26%	100	0.32%
Legal Services	8,200	8,100	8,300	100	1.23%	-100	-1.20%
Management of Companies & Enterprises	8,000	8,000	7,800	0	0.00%	200	2.56%
Admin. & Support & Waste Mgmt. & Remediation Serv.	37,000	37,300	36,300	-300	-0.80%	700	1.93%
Administrative & Support Services	34,800	35,100	33,700	-300	-0.85%	1,100	3.26%
Employment Services	12,500	12,500	12,600	0	0.00%	-100	-0.79%
Education & Health Services	101,700	101,200	100,700	500	0.49%	1,000	0.99%
Educational Services	31,400	30,600	31,100	800	2.61%	300	0.96%
Colleges, Universities, & Professional Schools	12,900	12,600	12,500	300	2.38%	400	3.20%
Health Care & Social Assistance	70,300	70,600	69,600	-300	-0.42%	700	1.01%
Ambulatory Health Care Services	27,100	27,100	26,200	0	0.00%	900	3.44%
Hospitals	25,800	25,800	24,200	0	0.00%	1,600	6.61%
Leisure & Hospitality	87,800	88,100	86,800	-300	-0.34%	1,000	1.15%
Arts, Entertainment, & Recreation	11,500	11,900	11,800	-400	-3.36%	-300	-2.54%
Amusement, Gambling, & Recreation Industries	6,200	6,600	6,500	-400	-6.06%	-300	-4.62%
Gambling Industries	1,700	1,800	1,800	-100	-5.56%	-100	-5.56%
Accommodation & Food Services	76,300	76,200	75,000	100	0.13%	1,300	1.73%
Accommodation	14,600	14,600	14,700	0	0.00%	-100	-0.68%
Food Services & Drinking Places	61,700	61,600	60,300	100	0.16%	1,400	2.32%
Other Services	24,400	24,500	23,900	-100	-0.41%	500	2.09%
Government	67,600	66,300	70,900	1,300	1.96%	-3,300	-4.65%
Federal Government	12,700	12,600	12,500	100	0.79%	200	1.60%
State Government	11,100	10,300	12,000	800	7.77%	-900	-7.50%
Local Government	43,800	43,400	46,400	400	0.92%	-2,600	-5.60%
<i>Hammond MSA - Not Seasonally Adjusted</i>	Prel. Sept 2017	Rev. Aug 2017	Sept 2016	OTM Change	OTM % Change	OTY Change	OTY % Change
Total Nonfarm	45,600	45,500	45,500	100	0.22%	100	0.22%
Total Private	34,200	34,400	34,200	-200	-0.58%	0	0.00%
Goods-Producing	3,400	3,500	3,600	-100	-2.86%	-200	-5.56%
Service-Providing	42,200	42,000	41,900	200	0.48%	300	0.72%
Private Service-Providing	30,800	30,900	30,600	-100	-0.32%	200	0.65%
Government	11,400	11,100	11,300	300	2.70%	100	0.88%

<i>Baton Rouge MSA - Not Seasonally Adjusted</i>	Prel.	Rev.		OTM	OTM	OTY	OTY
	Sept 2017	Aug 2017	Sept 2016	Change	% Change	Change	% Change
Total Nonfarm	411,600	406,700	405,400	4,900	1.20%	6,200	1.53%
Total Private	339,000	336,400	329,700	2,600	0.77%	9,300	2.82%
Goods-Producing	85,300	82,400	80,500	2,900	3.52%	4,800	5.96%
Mining & Logging	1,000	1,000	1,000	0	0.00%	0	0.00%
Mining, Logging, & Construction	55,800	52,900	51,200	2,900	5.48%	4,600	8.98%
Construction	54,800	51,900	50,200	2,900	5.59%	4,600	9.16%
Construction of Buildings	10,800	10,300	8,800	500	4.85%	2,000	22.73%
Nonresidential Building Construction	9,300	8,900	7,400	400	4.49%	1,900	25.68%
Heavy & Civil Engineering Construction	20,900	18,900	17,700	2,000	10.58%	3,200	18.08%
Specialty Trade Contractors	23,100	22,700	23,700	400	1.76%	-600	-2.53%
Manufacturing	29,500	29,500	29,300	0	0.00%	200	0.68%
Nondurable Goods	18,600	18,600	18,300	0	0.00%	300	1.64%
Chemical Manufacturing	11,000	11,000	10,800	0	0.00%	200	1.85%
Basic Chemical Manufacturing	6,000	6,000	6,000	0	0.00%	0	0.00%
Service-Providing	326,300	324,300	324,900	2,000	0.62%	1,400	0.43%
Private Service-Providing	253,700	254,000	249,200	-300	-0.12%	4,500	1.81%
Trade, Transportation, & Utilities	68,400	68,500	69,800	-100	-0.15%	-1,400	-2.01%
Wholesale Trade	13,300	13,400	13,200	-100	-0.75%	100	0.76%
Retail Trade	41,500	41,500	42,600	0	0.00%	-1,100	-2.58%
Grocery Stores	6,800	6,800	6,600	0	0.00%	200	3.03%
General Merchandise Stores	9,600	9,600	9,300	0	0.00%	300	3.23%
Department Stores	1,300	1,300	1,500	0	0.00%	-200	-13.33%
Transportation, Warehousing, & Utilities	13,600	13,600	14,000	0	0.00%	-400	-2.86%
Information	5,100	5,200	5,200	-100	-1.92%	-100	-1.92%
Financial Activities	19,100	19,300	19,000	-200	-1.04%	100	0.53%
Finance & Insurance	12,600	12,600	12,600	0	0.00%	0	0.00%
Depository Credit Intermediation	3,700	3,700	3,800	0	0.00%	-100	-2.63%
Professional & Business Services	48,200	47,700	48,400	500	1.05%	-200	-0.41%
Professional, Scientific, & Technical Services	19,400	19,100	20,000	300	1.57%	-600	-3.00%
Admin. & Support & Waste Mgmt. & Remediation Serv.	22,000	22,200	22,800	-200	-0.90%	-800	-3.51%
Education & Health Services	54,900	55,100	52,100	-200	-0.36%	2,800	5.37%
Health Care & Social Assistance	47,000	47,200	45,200	-200	-0.42%	1,800	3.98%
Ambulatory Health Care Services	19,800	19,900	19,900	-100	-0.50%	-100	-0.50%
Hospitals	12,100	12,100	12,100	0	0.00%	0	0.00%
Leisure & Hospitality	41,200	41,500	38,200	-300	-0.72%	3,000	7.85%
Accommodation & Food Services	33,900	33,900	32,700	0	0.00%	1,200	3.67%
Food Services & Drinking Places	30,600	30,400	29,800	200	0.66%	800	2.68%
Other Services	16,800	16,700	16,500	100	0.60%	300	1.82%
Government	72,600	70,300	75,700	2,300	3.27%	-3,100	-4.10%
Federal Government	2,800	2,800	2,900	0	0.00%	-100	-3.45%
State Government	37,800	37,000	40,500	800	2.16%	-2,700	-6.67%
Local Government	32,000	30,500	32,300	1,500	4.92%	-300	-0.93%
<i>Houma-Thibodaux MSA - Not Seasonally Adjusted</i>	Prel. Sept 2017	Rev. Aug 2017	Sept 2016	OTM Change	OTM % Change	OTY Change	OTY % Change
Total Nonfarm	85,100	86,000	87,400	-900	-1.05%	-2,300	-2.63%
Total Private	72,700	74,000	74,800	-1,300	-1.76%	-2,100	-2.81%
Goods-Producing	17,400	17,500	17,400	-100	-0.57%	0	0.00%
Mining & Logging	5,600	5,700	5,700	-100	-1.75%	-100	-1.75%
Support Activities for Mining	4,900	4,900	4,800	0	0.00%	100	2.08%
Mining, Logging, & Construction	10,400	10,400	10,200	0	0.00%	200	1.96%
Construction	4,800	4,700	4,500	100	2.13%	300	6.67%
Service-Providing	67,700	68,500	70,000	-800	-1.17%	-2,300	-3.29%
Private Service-Providing	55,300	56,500	57,400	-1,200	-2.12%	-2,100	-3.66%
Trade, Transportation, & Utilities	20,500	21,100	23,400	-600	-2.84%	-2,900	-12.39%
Retail Trade	11,000	11,200	10,900	-200	-1.79%	100	0.92%
Support Activities for Transportation	4,200	4,200	4,400	0	0.00%	-200	-4.55%
Administrative & Support Services	3,400	3,400	3,300	0	0.00%	100	3.03%
Employment Services	1,700	1,800	1,800	-100	-5.56%	-100	-5.56%
Leisure & Hospitality	8,000	8,100	7,900	-100	-1.23%	100	1.27%
Government	12,400	12,000	12,600	400	3.33%	-200	-1.59%
Federal Government	400	400	400	0	0.00%	0	0.00%
State Government	2,000	1,500	2,200	500	33.33%	-200	-9.09%
Local Government	10,000	10,100	10,000	-100	-0.99%	0	0.00%

LOUISIANA & MSAs NONFARM EMPLOYMENT

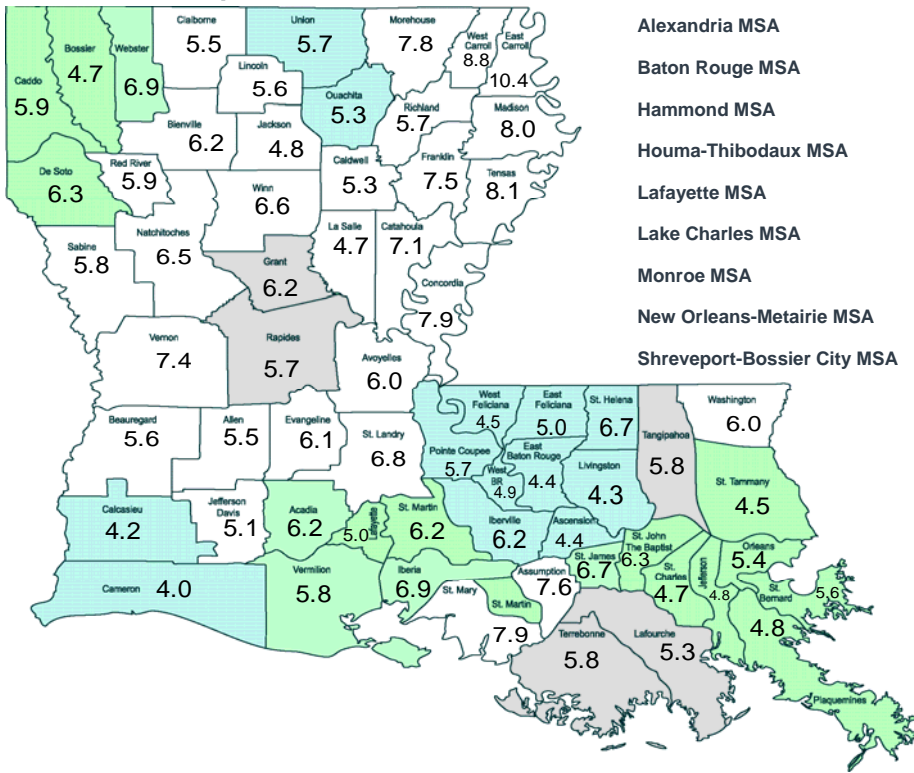
14

<i>Shreveport-Bossier City MSA - Not Seasonally Adjusted</i>	Prel.	Rev.		OTM	OTM	OTY	OTY
	Sept 2017	Aug 2017	Sept 2016	Change	% Change	Change	% Change
Total Nonfarm	178,500	178,100	179,900	400	0.22%	-1,400	-0.78%
Total Private	149,800	149,700	149,900	100	0.07%	-100	-0.07%
Goods-Producing	21,700	21,900	22,800	-200	-0.91%	-1,100	-4.82%
Mining & Logging	3,200	3,300	3,800	-100	-3.03%	-600	-15.79%
Mining, Logging, & Construction	11,500	11,700	12,500	-200	-1.71%	-1,000	-8.00%
Construction	8,300	8,400	8,700	-100	-1.19%	-400	-4.60%
Manufacturing	10,200	10,200	10,300	0	0.00%	-100	-0.97%
Service-Providing	156,800	156,200	157,100	600	0.38%	-300	-0.19%
Private Service-Providing	128,100	127,800	127,100	300	0.23%	1,000	0.79%
Trade, Transportation, & Utilities	38,100	37,500	37,400	600	1.60%	700	1.87%
Wholesale Trade	7,800	7,700	7,700	100	1.30%	100	1.30%
Retail Trade	24,200	23,800	23,300	400	1.68%	900	3.86%
General Merchandise Stores	5,900	6,000	5,700	-100	-1.67%	200	3.51%
Transportation, Warehousing, & Utilities	6,100	6,000	6,400	100	1.67%	-300	-4.69%
Information	2,000	2,000	2,000	0	0.00%	0	0.00%
Financial Activities	7,400	7,400	7,400	0	0.00%	0	0.00%
Professional & Business Services	16,300	16,300	16,500	0	0.00%	-200	-1.21%
Admin. & Support & Waste Mgmt. & Remediation Serv.	10,000	10,100	10,100	-100	-0.99%	-100	-0.99%
Education & Health Services	33,700	33,500	33,400	200	0.60%	300	0.90%
Health Care & Social Assistance	31,600	31,600	31,100	0	0.00%	500	1.61%
Hospitals	13,500	13,500	13,300	0	0.00%	200	1.50%
Leisure & Hospitality	23,900	24,300	23,700	-400	-1.65%	200	0.84%
Arts, Entertainment, & Recreation	4,900	4,800	4,900	100	2.08%	0	0.00%
Amusement, Gambling, & Recreation Industries	4,600	4,500	4,600	100	2.22%	0	0.00%
Gambling Industries	3,200	3,300	3,500	-100	-3.03%	-300	-8.57%
Accommodation & Food Services	19,000	19,500	18,800	-500	-2.56%	200	1.06%
Food Services & Drinking Places	15,300	15,700	15,100	-400	-2.55%	200	1.32%
Other Services	6,700	6,800	6,700	-100	-1.47%	0	0.00%
Government	28,700	28,400	30,000	300	1.06%	-1,300	-4.33%
Federal Government	4,800	4,800	4,900	0	0.00%	-100	-2.04%
State Government	5,100	4,600	5,700	500	10.87%	-600	-10.53%
Local Government	18,800	19,000	19,400	-200	-1.05%	-600	-3.09%
<i>Lafayette MSA - Not Seasonally Adjusted</i>	Prel. Sept 2017	Rev. Aug 2017	Sept 2016	OTM Change	OTM % Change	OTY Change	OTY % Change
Total Nonfarm	198,600	198,900	199,900	-300	-0.15%	-1,300	-0.65%
Total Private	172,500	173,200	174,000	-700	-0.40%	-1,500	-0.86%
Goods-Producing	38,500	38,900	39,100	-400	-1.03%	-600	-1.53%
Mining & Logging	13,500	13,500	14,200	0	0.00%	-700	-4.93%
Support Activities for Mining	11,300	11,300	11,900	0	0.00%	-600	-5.04%
Mining, Logging, & Construction	23,000	23,200	24,200	-200	-0.86%	-1,200	-4.96%
Construction	9,500	9,700	10,000	-200	-2.06%	-500	-5.00%
Manufacturing	15,500	15,700	14,900	-200	-1.27%	600	4.03%
Service-Providing	160,100	160,000	160,800	100	0.06%	-700	-0.44%
Private Service-Providing	134,000	134,300	134,900	-300	-0.22%	-900	-0.67%
Trade, Transportation, & Utilities	41,500	41,400	41,900	100	0.24%	-400	-0.95%
Wholesale Trade	9,100	9,100	9,100	0	0.00%	0	0.00%
Retail Trade	27,600	27,500	27,600	100	0.36%	0	0.00%
General Merchandise Stores	6,100	6,100	5,700	0	0.00%	400	7.02%
Transportation, Warehousing, & Utilities	4,800	4,800	5,200	0	0.00%	-400	-7.69%
Information	2,500	2,500	2,500	0	0.00%	0	0.00%
Financial Activities	10,300	10,400	10,600	-100	-0.96%	-300	-2.83%
Professional & Business Services	20,000	20,000	20,500	0	0.00%	-500	-2.44%
Professional, Scientific, & Technical Services	8,800	8,800	9,100	0	0.00%	-300	-3.30%
Education & Health Services	30,200	30,300	30,200	-100	-0.33%	0	0.00%
Health Care & Social Assistance	29,000	29,100	29,000	-100	-0.34%	0	0.00%
Hospitals	7,500	7,500	7,500	0	0.00%	0	0.00%
Leisure & Hospitality	22,300	22,500	22,000	-200	-0.89%	300	1.36%
Accommodation & Food Services	19,800	19,800	19,400	0	0.00%	400	2.06%
Food Services & Drinking Places	18,200	18,200	17,800	0	0.00%	400	2.25%
Other Services	7,200	7,200	7,200	0	0.00%	0	0.00%
Government	26,100	25,700	25,900	400	1.56%	200	0.77%
Federal Government	1,400	1,400	1,400	0	0.00%	0	0.00%
State Government	5,300	5,000	5,200	300	6.00%	100	1.92%
Local Government	19,400	19,300	19,300	100	0.52%	100	0.52%

<i>Lake Charles MSA - Not Seasonally Adjusted</i>	Prel.	Rev.	Sept 2016	OTM	OTM	OTY	OTY
	Sept 2017	Aug 2017		Change	% Change	Change	% Change
Total Nonfarm	114,800	114,600	110,300	200	0.17%	4,500	4.08%
Total Private	99,900	100,300	95,100	-400	-0.40%	4,800	5.05%
Goods-Producing	36,700	36,400	32,700	300	0.82%	4,000	12.23%
Mining & Logging	500	500	500	0	0.00%	0	0.00%
Mining, Logging, & Construction	26,200	25,900	22,200	300	1.16%	4,000	18.02%
Construction	25,700	25,400	21,700	300	1.18%	4,000	18.43%
Heavy & Civil Engineering Construction	8,700	8,700	9,100	0	0.00%	-400	-4.40%
Manufacturing	10,500	10,500	10,500	0	0.00%	0	0.00%
Nondurable Goods	7,500	7,600	7,500	-100	-1.32%	0	0.00%
Service-Providing	78,100	78,200	77,600	-100	-0.13%	500	0.64%
Private Service-Providing	63,200	63,900	62,400	-700	-1.10%	800	1.28%
Trade, Transportation, & Utilities	18,100	18,400	17,800	-300	-1.63%	300	1.69%
Retail Trade	11,200	11,400	11,400	-200	-1.75%	-200	-1.75%
Professional & Business Services	9,400	9,500	9,400	-100	-1.05%	0	0.00%
Leisure & Hospitality	15,300	15,500	14,900	-200	-1.29%	400	2.68%
Accommodation & Food Services	14,000	14,000	13,600	0	0.00%	400	2.94%
Government	14,900	14,300	15,200	600	4.20%	-300	-1.97%
Federal Government	600	600	600	0	0.00%	0	0.00%
State Government	2,700	2,400	2,900	300	12.50%	-200	-6.90%
Local Government	11,600	11,300	11,700	300	2.65%	-100	-0.85%
<i>Monroe MSA - Not Seasonally Adjusted</i>	Prel. Sept 2017	Rev. Aug 2017	Sept 2016	OTM Change	OTM % Change	OTY Change	OTY % Change
Total Nonfarm	79,200	79,300	78,900	-100	-0.13%	300	0.38%
Total Private	68,200	68,800	67,500	-600	-0.87%	700	1.04%
Goods-Producing	10,900	11,200	10,600	-300	-2.68%	300	2.83%
Manufacturing	6,500	6,500	6,600	0	0.00%	-100	-1.52%
Nondurable Goods	4,600	4,600	4,600	0	0.00%	0	0.00%
Service-Providing	68,300	68,100	68,300	200	0.29%	0	0.00%
Private Service-Providing	57,300	57,600	56,900	-300	-0.52%	400	0.70%
Trade, Transportation, & Utilities	14,700	14,700	14,800	0	0.00%	-100	-0.68%
Retail Trade	10,300	10,300	10,300	0	0.00%	0	0.00%
Professional & Business Services	8,800	8,800	8,700	0	0.00%	100	1.15%
Education & Health Services	16,000	15,900	15,700	100	0.63%	300	1.91%
Hospitals	3,700	3,700	3,700	0	0.00%	0	0.00%
Leisure & Hospitality	8,100	8,200	8,000	-100	-1.22%	100	1.25%
Government	11,000	10,500	11,400	500	4.76%	-400	-3.51%
Federal Government	500	500	500	0	0.00%	0	0.00%
State Government	2,100	1,800	2,500	300	16.67%	-400	-16.00%
Local Government	8,400	8,200	8,400	200	2.44%	0	0.00%
<i>Alexandria MSA - Not Seasonally Adjusted</i>	Prel. Sept 2017	Rev. Aug 2017	Sept 2016	OTM Change	OTM % Change	OTY Change	OTY % Change
Total Nonfarm	62,400	62,500	63,000	-100	-0.16%	-600	-0.95%
Total Private	49,300	49,700	49,700	-400	-0.80%	-400	-0.80%
Goods-Producing	8,400	8,400	8,400	0	0.00%	0	0.00%
Service-Providing	54,000	54,100	54,600	-100	-0.18%	-600	-1.10%
Private Service-Providing	40,900	41,300	41,300	-400	-0.97%	-400	-0.97%
Trade, Transportation, & Utilities	10,900	10,900	11,300	0	0.00%	-400	-3.54%
Retail Trade	7,700	7,700	7,900	0	0.00%	-200	-2.53%
Hospitals	4,000	4,000	4,000	0	0.00%	0	0.00%
Government	13,100	12,800	13,300	300	2.34%	-200	-1.50%
Federal Government	2,800	2,800	2,900	0	0.00%	-100	-3.45%
State Government	3,400	3,300	3,500	100	3.03%	-100	-2.86%
Local Government	6,900	6,700	6,900	200	2.99%	0	0.00%

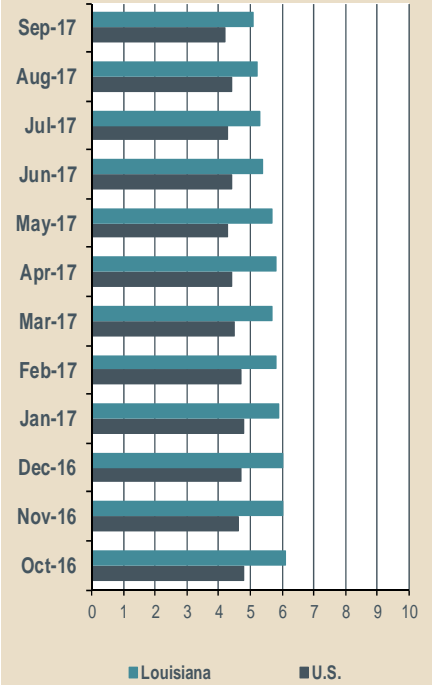
Louisiana Unemployment Rates (Not Seasonally Adjusted)

September 2017



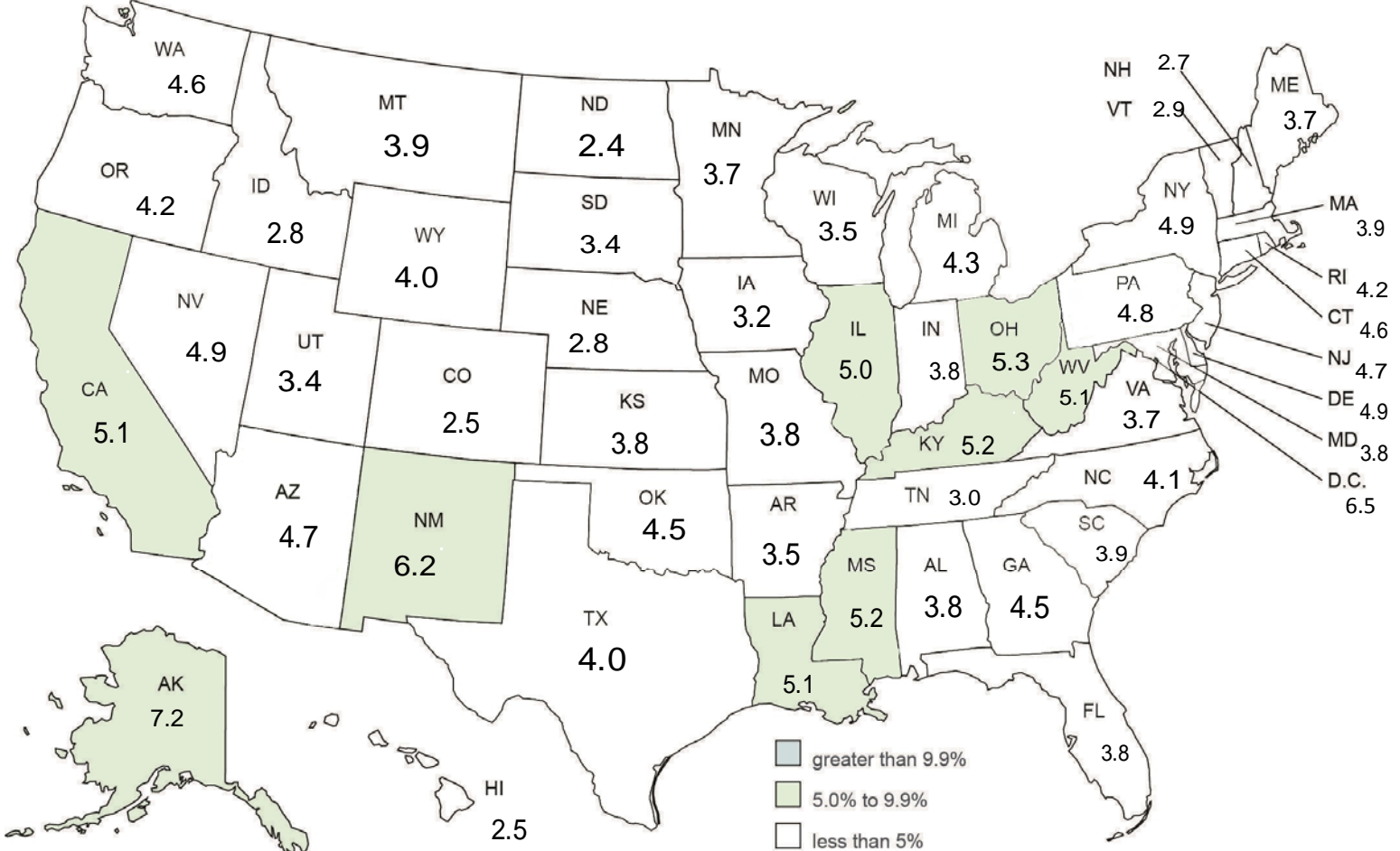
Statewide	5.3 %
Alexandria MSA	5.8 %
Baton Rouge MSA	4.5 %
Hammond MSA	5.8 %
Houma-Thibodaux MSA	5.5 %
Lafayette MSA	5.6 %
Lake Charles MSA	4.2 %
Monroe MSA	5.4 %
New Orleans-Metairie MSA	5.0 %
Shreveport-Bossier City MSA	5.7 %

United States - Louisiana Unemployment Rates (Seasonally Adjusted)



United States Unemployment Rates (Seasonally Adjusted)

September 2017



CIVILIAN LABOR FORCE (Not Seasonally Adjusted)

Area	September 2017			August 2017			September 2016		
	Employed	Unemployed	Rate	Employed	Unemployed	Rate	Employed	Unemployed	Rate
UNITED STATES	154,494,000	6,556,000	4.1	153,576,000	7,287,000	4.5	151,977,000	7,658,000	4.8
LOUISIANA	1,980,073	110,356	5.3	1,972,430	117,869	5.6	1,984,067	134,882	6.4
ALEXANDRIA MSA	60,442	3,713	5.8	60,567	4,036	6.2	61,318	4,302	6.6
Grant	7,605	500	6.2	7,639	590	7.2	7,716	591	7.1
Rapides	52,837	3,213	5.7	52,928	3,446	6.1	53,602	3,711	6.5
BATON ROUGE MSA	400,991	19,113	4.5	395,392	20,603	5.0	396,984	24,302	5.8
Ascension	59,025	2,719	4.4	58,152	2,859	4.7	58,423	3,236	5.2
East Baton Rouge	224,257	10,432	4.4	220,905	11,363	4.9	221,950	13,217	5.6
East Feliciana	7,758	407	5.0	7,675	430	5.3	7,686	488	6.0
Iberville	13,418	881	6.2	13,268	942	6.6	13,305	993	6.9
Livingston	65,203	2,913	4.3	64,376	3,103	4.6	64,564	4,271	6.2
Pointe Coupee	9,427	572	5.7	9,399	618	6.2	9,364	711	7.1
St. Helena	4,135	297	6.7	4,093	333	7.5	4,099	364	8.2
West Baton Rouge	12,635	652	4.9	12,436	698	5.3	12,501	737	5.6
West Feliciana	5,133	240	4.5	5,088	257	4.8	5,092	285	5.3
HAMMOND MSA	50,983	3,160	5.8	50,783	3,435	6.3	51,085	3,848	7.0
Tangipahoa	50,983	3,160	5.8	50,783	3,435	6.3	51,085	3,848	7.0
HOUMA-THIBODAUX MSA	82,199	4,825	5.5	83,120	5,061	5.7	84,536	6,378	7.0
Lafourche	38,625	2,161	5.3	39,032	2,301	5.6	39,701	2,844	6.7
Terbonne	43,574	2,664	5.8	44,088	2,760	5.9	44,835	3,534	7.3
LAFAYETTE MSA	196,455	11,672	5.6	196,905	12,485	6.0	198,303	15,795	7.4
Acadia	22,085	1,452	6.2	22,240	1,503	6.3	22,342	1,904	7.9
Iberia	26,896	1,979	6.9	27,079	2,190	7.5	27,171	2,896	9.6
Lafayette	104,667	5,511	5.0	104,622	5,870	5.3	105,557	7,264	6.4
St. Martin	20,670	1,360	6.2	20,685	1,443	6.5	20,886	1,829	8.1
Vermilion	22,137	1,370	5.8	22,279	1,479	6.2	22,347	1,902	7.8
LAKE CHARLES MSA	106,789	4,722	4.2	106,132	4,771	4.3	103,179	5,330	4.9
Calcasieu	102,959	4,564	4.2	102,320	4,613	4.3	99,477	5,152	4.9
Cameron	3,830	158	4.0	3,812	158	4.0	3,702	178	4.6
MONROE MSA	75,755	4,304	5.4	75,780	4,507	5.6	75,959	5,008	6.2
Ouachita	67,190	3,788	5.3	67,136	3,973	5.6	67,344	4,395	6.1
Union	8,565	516	5.7	8,644	534	5.8	8,615	613	6.6
NEW ORLEANS-METARIE MSA	562,579	29,808	5.0	560,505	32,028	5.4	564,116	34,493	5.8
Jefferson	204,909	10,279	4.8	203,992	10,888	5.1	205,460	11,928	5.5
Orleans	168,485	9,701	5.4	167,842	10,683	6.0	168,914	11,102	6.2
Plaquemines	9,569	481	4.8	9,618	516	5.1	9,627	582	5.7
St. Bernard	18,170	1,081	5.6	18,172	1,119	5.8	18,231	1,257	6.5
St. Charles	23,923	1,179	4.7	23,815	1,245	5.0	23,991	1,396	5.5
St. James	8,883	640	6.7	8,850	699	7.3	8,918	716	7.4
St. John the Baptist	18,702	1,247	6.3	18,591	1,334	6.7	18,753	1,395	6.9
St. Tammany	109,938	5,200	4.5	109,625	5,544	4.8	110,222	6,117	5.3
SHREVEPORT-BOSSIER CITY MSA	174,827	10,473	5.7	174,404	11,298	6.1	176,957	12,761	6.7
Bossier	52,807	2,594	4.7	52,687	2,769	5.0	53,457	3,190	5.6
Caddo	98,567	6,216	5.9	98,296	6,749	6.4	99,748	7,442	6.9
De Soto	9,788	657	6.3	9,785	692	6.6	9,917	800	7.5
Webster	13,665	1,006	6.9	13,636	1,088	7.4	13,835	1,329	8.8
NON-MSA PARISHES									
Allen	8,485	490	5.5	8,403	509	5.7	8,393	597	6.6
Assumption	8,244	676	7.6	8,265	698	7.8	8,345	819	8.9
Avoyelles	14,802	953	6.0	14,887	1,084	6.8	14,471	1,114	7.1
Beauregard (DeRidder MC)	13,765	818	5.6	13,808	834	5.7	13,955	917	6.2
Bienville	5,270	351	6.2	5,290	352	6.2	5,231	444	7.8
Caldwell	3,648	205	5.3	3,649	216	5.6	3,660	301	7.6
Catahoula	3,165	242	7.1	3,242	265	7.6	3,121	306	8.9
Claiborne	5,372	311	5.5	5,399	328	5.7	5,572	418	7.0
Concordia (Natchez, MS-LAMC)	6,539	558	7.9	6,554	602	8.4	6,675	611	8.4
East Carroll	1,798	209	10.4	1,813	223	11.0	1,913	243	11.3
Evangeline	11,742	762	6.1	11,639	798	6.4	11,812	978	7.6
Franklin	6,587	537	7.5	6,617	580	8.1	6,569	636	8.8
Jackson	6,506	328	4.8	6,451	350	5.1	6,488	404	5.9
Jefferson Davis	12,732	680	5.1	12,857	726	5.3	12,644	868	6.4
La Salle	5,809	288	4.7	5,753	304	5.0	5,800	386	6.2
Lincoln (Ruston MC)	18,955	1,121	5.6	18,602	1,236	6.2	19,095	1,336	6.5
Madison	3,427	298	8.0	3,467	323	8.5	3,469	345	9.0
Morehouse (Bastrop MC)	9,584	810	7.8	9,492	851	8.2	9,707	994	9.3
Natchitoches (Natchitoches MC)	14,858	1,025	6.5	14,574	1,095	7.0	15,116	1,117	6.9
Red River	3,567	223	5.9	3,600	212	5.6	3,589	254	6.6
Richland	7,764	469	5.7	7,858	511	6.1	7,782	564	6.8
Sabine	8,074	496	5.8	8,141	513	5.9	8,336	651	7.2
St. Landry (Opelousas MC)	29,419	2,137	6.8	29,490	2,333	7.3	29,815	2,731	8.4
St. Mary (Morgan City MC)	18,446	1,579	7.9	18,476	1,683	8.3	19,465	2,127	9.9
Tensas	1,422	126	8.1	1,452	140	8.8	1,472	162	9.9
Vernon (Fort Polk South MC)	15,079	1,197	7.4	15,124	1,085	6.7	15,124	1,231	7.5
Washington (Bogalusa MC)	15,882	1,018	6.0	15,669	1,085	6.5	15,711	1,219	7.2
West Carroll	3,561	342	8.8	3,656	358	8.9	3,579	485	11.9
Winn	4,556	321	6.6	4,613	348	7.0	4,722	404	7.9

In addition to nine (9) Metropolitan Statistical Areas (MSAs) in Louisiana, there are nine (9) Micropolitan Statistical Areas (MCs). Civilian Labor Force can be derived by adding employed and unemployed. For related information or data, please visit <http://www.bls.gov/au/>.

LOUISIANA - PRIVATE EMPLOYMENT (Not Seasonally Adjusted)

	Average Weekly Earnings (\$)			Average Weekly Hours			Average Hourly Earnings (\$)		
	SEPT	AUG	SEPT	SEPT	AUG	SEPT	SEPT	AUG	SEPT
	2017	2017	2016	2017	2017	2016	2017	2017	2016
Total Private	822.53	808.37	798.16	35.7	35.3	34.9	23.04	22.90	22.87
Goods-Producing	1,131.78	1,115.06	1,117.92	42.5	41.7	41.1	26.63	26.74	27.20
Private Service-Providing	745.96	735.15	721.77	34.0	33.8	33.4	21.94	21.75	21.61
Construction	1,078.05	1,053.57	1,094.49	41.1	40.6	41.1	26.23	25.95	26.63
Manufacturing	1,118.42	1,093.03	1,043.19	43.4	42.3	40.2	25.77	25.84	25.95
Trade, Transportation, and Utilities	728.29	716.74	721.81	35.2	35.1	35.4	20.69	20.42	20.39
Financial Activities	961.91	941.77	947.86	36.7	35.7	36.4	26.21	26.38	26.04
Professional and Business Services	970.17	982.12	944.88	37.1	37.4	37.2	26.15	26.26	25.40
Education and Health Services	773.08	762.80	744.82	33.7	33.5	33.4	22.94	22.77	22.30
Leisure and Hospitality	350.05	347.42	348.44	26.3	26.5	26.1	13.31	13.11	13.35

METROPOLITAN STATISTICAL AREAS (MSAs) - PRIVATE EMPLOYMENT
(Not Seasonally Adjusted)

	Average Weekly Earnings (\$)			Average Weekly Hours			Average Hourly Earnings (\$)		
	SEPT	AUG	SEPT	SEPT	AUG	SEPT	SEPT	AUG	SEPT
	2017	2017	2016	2017	2017	2016	2017	2017	2016
Alexandria	679.27	641.42	640.23	34.1	33.6	32.9	19.92	19.09	19.46
Baton Rouge	889.61	862.06	875.08	36.7	35.8	35.5	24.24	24.08	24.65
Hammond	647.77	655.91	487.83	31.8	32.2	30.3	20.37	20.37	16.10
Houma	949.03	940.41	868.57	38.5	38.7	36.1	24.65	24.30	24.06
Lafayette	867.43	857.77	852.32	35.8	35.8	36.3	24.23	23.96	23.48
Lake Charles	831.38	782.65	894.46	36.1	34.8	36.9	23.03	22.49	24.24
Monroe	711.87	700.59	709.44	36.6	36.3	36.4	19.45	19.30	19.49
New Orleans	877.39	870.19	854.89	34.9	34.6	34.1	25.14	25.15	25.07
Shreveport	656.54	655.20	669.24	33.6	33.6	33.8	19.54	19.50	19.80

AVERAGE HOURS AND EARNINGS FOR PRODUCTION WORKERS IN MANUFACTURING
AND SELECTED NONMANUFACTURING INDUSTRIES (Not Seasonally Adjusted)

	Production Workers	Average Weekly Earnings (\$)			Average Weekly Hours			Average Hourly Earnings (\$)		
		SEPT	SEPT	AUG	SEPT	SEPT	AUG	SEPT	AUG	SEPT
		2017	2017	2017	2016	2017	2017	2016	2017	2017
Mining & Logging	28,200	1,324.80	1,461.67	1,445.66	48.0	49.0	44.4	27.60	29.83	32.56
Manufacturing	104,800	941.96	916.98	886.94	42.7	41.7	41.1	22.06	21.99	21.58
Durable Goods	48,300	1,031.23	999.75	908.19	44.7	43.6	40.4	23.07	22.93	22.48
Nondurable Goods	56,500	865.92	846.51	869.44	41.0	40.1	41.8	21.12	21.11	20.80

WORKFORCE DEVELOPMENT AREA		PERIOD	LABORFORCE	EMP	UNEMP	URATE
St. Tammany, Plaquemines, St. Bernard	WDA 10	August	144,594	137,415	7,179	5.0
		September	144,439	137,677	6,762	4.7
Jefferson	WDA 11	August	214,880	203,992	10,888	5.1
		September	215,188	204,909	10,279	4.8
Orleans	WDA 12	August	178,525	167,842	10,683	6.0
		September	178,186	168,485	9,701	5.4
St. James, St. John the Baptist, St. Charles	WDA 14	August	54,534	51,256	3,278	6.0
		September	54,574	51,508	3,066	5.6
Pointe Coupee, West Feliciana, East Feliciana, St. Helena, Tangipahoa, Washington, Livingston, Ascension, Iberville, West Baton Rouge	WDA 20	August	254,699	240,939	13,760	5.4
		September	256,458	243,599	12,859	5.0
East Baton Rouge	WDA 21	August	232,268	220,905	11,363	4.9
		September	234,689	224,257	10,432	4.4
Assumption, Lafourche, Terrebonne	WDA 31	August	97,144	91,385	5,759	5.9
		September	95,944	90,443	5,501	5.7
Lafayette, Vermilion, Iberia, St. Mary, St. Martin, St. Landry, Evangeline, Acadia	WDA 40	August	273,809	256,510	17,299	6.3
		September	272,212	256,062	16,150	5.9
Vernon, Allen, Beauregard, Calcasieu, Jefferson Davis, Cameron	WDA 51	August	164,249	156,324	7,925	4.8
		September	164,757	156,850	7,907	4.8
Avoyelles, Catahoula, Concordia, LaSalle, Grant, Winn	WDA 60	August	45,881	42,688	3,193	7.0
		September	45,338	42,476	2,862	6.3
Rapides	WDA 61	August	56,374	52,928	3,446	6.1
		September	56,050	52,837	3,213	5.7
DeSoto, Sabine, Natchitoches, Red River, Bienville, Lincoln, Claiborne, Webster	WDA 70	August	84,543	79,027	5,516	6.5
		September	84,739	79,549	5,190	6.1
Caddo, Bossier	WDA 71	August	160,501	150,983	9,518	5.9
		September	160,184	151,374	8,810	5.5
Ouachita	WDA 81	August	71,109	67,136	3,973	5.6
		September	70,978	67,190	3,788	5.3
Union, East Carroll, West Carroll, Morehouse, Franklin, Richland, Caldwell, Jackson, Madison, Tensas	WDA 83	August	57,185	53,099	4,086	7.1
		September	56,702	52,862	3,840	6.8

*WDA data are seasonally adjusted. August is revised, while September is preliminary.

Labor Market Questions and Answers!

When will the new projections data be included in the website?

The new projections data for the short-term 2014-2017 and long-term 2014-2024 are now on the website.

http://www.laworks.net/LaborMarketInfo/LMI_employmentprojections.asp

This web page shows industry and occupational information sorted by education and all occupations. The data includes occupations that are the fastest growing and the ones that will add the most jobs.

Glossary & Technical Notes

Average Hourly Earnings/Average Weekly Earnings/ Average Weekly Hours (CES/BLS) - average total money earnings, in the survey week (i.e., the week that includes the twelfth of the month), of production workers plus nonsupervisory workers not in production, including overtime, paid vacation and sick leave.

Civilian Labor Force - that portion of the population, age sixteen or older, which is employed or unemployed and actively seeking employment during the reference week of the twelfth of the month.

Employed - the members of the labor force who worked for pay or profit, or had a job from which they were temporarily absent because of illness, vacation, labor dispute, or other reasons not reflecting a shortage of work, or who worked fifteen hours or more as unpaid workers in an enterprise operated by a member of the family.

Unemployed - the members of the labor force who did not work but were seeking work or were awaiting recall from layoffs or the beginning of a new job within thirty days.

Unemployment Rate - the number of unemployed persons expressed as a percentage of the labor force.

Continued Claim - each week claimed subsequent to the filing of the initial claim for a week of unemployment compensation.

Current Employment Statistics (CES) - estimates of nonfarm employment and production workers hours and earnings by industry. They are produced as part of a nationwide program, in cooperation with the Bureau of Labor Statistics (BLS), for the state and each metropolitan statistical area (MSA) from a sample of employing establishments.

Current Population Survey (CPS) - a monthly household survey of the U.S. population conducted for the Bureau of Labor Statistics (BLS) by the Bureau of the Census, of 60,000 selected households. Respondents are interviewed to obtain information on the employment status of each household member age 16 and over, during the reference week of the twelfth.

Durable Goods - items with a normal life expectancy of three years or more. Automobiles, furniture, household appliances, and mobile homes are examples.

Extended Layoff Event - Fifty or more initial claims for unemployment insurance benefits from an establishment during a 5-week period, with at least 50 workers separated for more than 30 days.

Initial Claims - a new claim, filed to open a claim for unemployment compensation.

Metropolitan Statistical Area (MSA) - a geographical area comprised of a parish generally containing a central city (or twin cities) of 50,000 inhabitants or more and contiguous parishes that are socially and economically integrated with the central city.

Micropolitan Statistical Area (MC) - a geographical area comprised of a parish containing a central city of at least 10,000 but less than 50,000 inhabitants and contiguous parishes that are socially and economically integrated with the central city.

NAICS (North American Industry Classification System) - an industry classification system that groups establishments into industries based on the activities in which they are primarily engaged.

Nonfarm Employment - employment by place of work that does not include the self employed, unpaid family workers, domestics, or agriculture workers. All estimates of nonfarm employment in this publication are in cooperation with the U.S. Department of Labor Bureau of Labor Statistics and include all full-time and part-time workers who were employed during the pay period including the twelfth of the month.

Nondurable Goods - items that generally last for only a short period of time (less than three years). Food, beverages, apparel, and gasoline are common examples.

Seasonally Adjusted - monthly data that is adjusted to minimize the changes in any time series which result from normal annual occurrences such as Christmas, summer vacations, and weather patterns.

Separation - The release of persons from an employer as part of a mass layoff event. Such releases involve both persons subject to recall and those who are terminated by the establishment.

Subsector - refers to the three-digit NAICS code, which will fall under the particular sector. Example: If Manufacturing (31-33) is the industry sector, then Food manufacturing (311), Paper manufacturing (322), Chemical manufacturing (325), Transportation equipment manufacturing (336), are some of the subsectors of manufacturing.

Supersector - refers to these five categories: Total Nonfarm, Total Private, Goods-Producing, Service-Providing, and Private Service-Providing.

Summary Industry Sector - a combination of industry sectors. A summary sector may or may not be published. The summary industry sectors are Mining & Logging; Construction; Manufacturing; Trade, Transportation, & Utilities; Information; Financial Activities; Professional & Business Services; Education & Health Services; Leisure & Hospitality; Other Services; and Government.

Industry Sector - 20 industry sectors based on two-digit NAICS code. They are Agriculture, Forestry, Fishing and Hunting (11), Mining (21), Utilities (22), Construction (23), Manufacturing (31-33), Wholesale Trade (42), Retail Trade (44-45), Transportation and Warehousing (48-49), Information (51), Finance and Insurance (52), Real Estate and Rental and Leasing (53), Professional and Technical Services (54), Management of Companies and Enterprises (55), Administrative and Waste Services (56), Educational Services (61), Health Care and Social Assistance (62), Arts, Entertainment, and Recreation (71), Accommodation and Food Services (72), Other Services (81), and Public Administration (92).

Constraints of the monthly civilian labor force and nonfarm employment estimates:

The civilian labor force estimates are derived by a monthly survey of approximately 723 households throughout Louisiana following the Bureau of Labor Statistics (BLS) methodology. The US Census Bureau conducts the survey by calling randomly selected households and providing BLS with survey results. Households are asked for the number of residents who are sixteen and over and whether they were working or actively looking for work during the week of the twelfth of the month. Responses to these questions become part of the formula to determine the number of people employed and the number of individuals unemployed for the state, MSAs, and each parish every month.

The nonfarm employment estimates are derived from responses received from the monthly BLS survey of approximately 7,000 businesses across the state. Responses capture employment activity during the 12th of each month. This survey relies on responses from these businesses to produce industry employment levels for the state and all metropolitan statistical areas.

Both data sets are comparable with estimates for the U.S., all 50 states, and 387 metropolitan areas across the U.S.

LABOR MARKET INFORMATION WEB LINKS

Civilian Labor Force - LAUS (Local Area Unemployment Statistics) –

Employment, Unemployment and Unemployment Insurance Rate

LA <https://www.louisianaworks.net/hire/altentry.asp?action=lmiguest>

Left menu: Historical Data Analysis – Employment and Wage Data – Labor Force Data – Labor Force Employment and Unemployment (LAUS)

States <http://data.bls.gov/cgi-bin/dsrv?la>

US <http://data.bls.gov/pdq/querytool.jsp?survey=ln>

Consumer Price Index (US) <http://data.bls.gov/cgi-bin/surveymost?cu>

Download Louisiana Workforce Commission’s Labor Market Information Products

LA http://www.laworks.net/Downloads/Downloads_LMI.asp

Employment and Wage Data – Quarterly Census of Employment and Wages (QCEW)

LA <https://www.louisianaworks.net/hire/altentry.asp?action=lmiguest>

Left menu: Historical Data Analysis – Employment and Wage Data – Industry Data – Quarterly Census of Employment and Wages (QCEW)

States & US <http://data.bls.gov/cgi-bin/dsrv?en>

NAICS (North American Industry Classification System) Codes Look-Up Table

<http://www.census.gov/eos/www/naics/>

Nonfarm Employment, Hours and Earnings - CES (Current Employment Statistics)

LA <https://www.louisianaworks.net/hire/altentry.asp?action=lmiguest>

Left menu: Historical Data Analysis – Employment and Wage Data – Industry Data – Current Employment Statistics (CES) – select Show Earnings Data under table

States <http://data.bls.gov/cgi-bin/dsrv?sm>

US <http://data.bls.gov/cgi-bin/dsrv?ce>

Unemployment Insurance Claimants Data (by Occupation) - Unemployment Insurance (UI)

LA <https://www.louisianaworks.net/hire/altentry.asp?action=lmiguest>

Left menu: Historical Data Analysis – Employment and Wage Data – Labor Force Data – Unemployment Insurance Claimants

Unemployment Insurance Claims Data (by Region, Parish, Industry) - UI

LA http://www.laworks.net/LaborMarketInfo/LMI_UIClaimsReportMenu.asp

States & US <http://ows.doleta.gov/unemploy/claims.asp>

Unemployment Rates for all States - LAUS

States <http://www.bls.gov/web/laus/laumstrk.htm>



Office of Occupational Information Services
 Research & Statistics Division
 Post Office Box 94094
 Baton Rouge, LA 70804-9094

Data for: 09/2017



Workforce At A Glance is published monthly by the Louisiana Workforce Commission. The material in this publication is not copyrighted and may be reproduced; however, the LWC would appreciate credit for the material used and a copy of the reprint.

LMI Staff:

Sachin Chintawar, Director
 Kelsey Canizaro
 Jeffrey Duplantier
 Kelly Ebey

Contributors:

Kelsey Canizaro
 Karen Clark
 Natalie Foster-Lawrence
 Karl Gleichman
 Mark Jones
 Sean Painter
 Tara Robinson

Contact Us:


Phone (225) 342-3141; Fax (225) 219-7759
 Toll Free (888) 302-7662
 Email lmi@lwc.la.gov

John Bel Edwards, Governor
 State of Louisiana

Ava Dejoie, Executive Director
 Louisiana Workforce Commission

Connect With Us:

Website: <https://www.laworks.net>

 <https://www.facebook.com/LouisianaWorks>

 <https://twitter.com/LouisianaWorks>

 <https://www.linkedin.com/company/louisiana-workforce-commission>

 <http://instagram.com/louisianaworks>