

Louisiana Workforce

at a glance

www.laworks.net

Release Date: Oct. 26, 2011

Data For: Sept. 2011

In This Issue

- 2 Economic Comparison
- 3 NSA State & Area Employment
- 4 – 7 Data Trends (Graphs)
- 8 – 10 Nonfarm Employment
- 11 – 12 Unemployment Rates & Civilian Labor Force
- 13 Average Hours & Earnings
- 14 UI Claimants & Labor Market Q & A
- 15 – 16 Glossary, Data Constraints, Downloads & Web Links

Statewide Overview

Seasonally adjusted nonfarm employment for Louisiana was estimated at 1,927,500 in September 2011. This represents a gain of 14,100 jobs from the previous month, and a 44,900-job increase from September 2010. Education and health services showed the largest over-the-month gain, adding 5,200 jobs. Education and health services also posted the largest over-the-year change, adding 18,700 jobs.

Over the month, seven of the 11 industry sectors had increases in employment, while four showed declines. After education and health services, the next largest increase was seen in government, which added 5,000 jobs. Professional and business services showed an increase of 3,600 jobs from August, while the construction sector added 1,900 jobs. Manufacturing rose by 900 jobs over the month. The information sector added 800 positions, while mining and logging increased by 400. The largest decline from August occurred in leisure and hospitality, which fell by 2,500 jobs. The other services sector lost 1,000 jobs over the month. The trade, transportation, and utilities sector as well as the financial activities sector both showed a slight decline of 100 jobs from August.

Over the year, nine of the 11 sectors added jobs. After education and health services, the largest over-the-year gain occurred in manufacturing, which added 8,100 jobs. Trade, transportation, and utilities increased by 7,300 jobs from last September, while construction added 4,700 jobs. Leisure and hospitality added 3,300 jobs over the year. Both the mining and logging as well as financial activities sectors added 1,900 jobs since last September. The information sector saw an increase of 1,200 jobs, while the professional and business sector added 800. The largest over-the-year decline occurred in government, which lost 2,200 jobs. The other services sector fell by 800 from last September.

The September 2011 preliminary seasonally adjusted unemployment rate for Louisiana was 6.9 percent, a decrease from the August revised rate of 7.2 percent. The national unemployment rate for September remained the same as the August rate of 9.1 percent. Total unemployment in the state for September was 141,180. The state civilian labor force increased to 2,038,445 with an increase in total employment to 1,897,265.

Economic Indicators

Seasonally Adjusted	PRELIMINARY SEPTEMBER 2011	
	United States	Louisiana
Civilian Labor Force		
Labor Force	154,017,000	2,038,445
Employed	140,025,000	1,897,265
Unemployed	13,992,000	141,180
Unemployment Rate	9.1	6.9
Nonfarm Wage and Salary Employment	SEPT 2011	SEPT 2011
	United States	Louisiana
Total Nonfarm	131,334,000	1,927,500
Mining and Logging	805,000	54,500
Construction	5,551,000	125,800
Manufacturing	11,741,000	144,100
Trade, Transportation, and Utilities	24,952,000	370,400
Information	2,660,000	29,200
Financial Activities	7,603,000	95,100
Professional and Business Services	17,280,000	195,100
Education and Health Services	20,081,000	291,000
Leisure and Hospitality	13,223,000	198,100
Other Services	5,453,000	65,300
Government	21,985,000	358,900
All Employees Average Hours & Earnings		
(Not Seasonally Adjusted)		
Construction	SEPT 2011	SEPT 2011
	United States	Louisiana
Average Weekly Earnings	\$ 993.33	\$ 934.34
Average Weekly Hours	39.0	41.6
Average Hourly Wages	\$ 25.47	\$ 22.46
Manufacturing		
Average Weekly Earnings	\$ 959.78	\$ 1,024.00
Average Weekly Hours	40.6	40.0
Average Hourly Wages	\$ 23.64	\$ 25.60
Louisiana Unemployment Insurance Activities		
Claims	SEPT 2011	
Initial New & Renewals	13,221	
Continued Weekly Intrastate Only	156,688	
Insured Unemployment Rate	2.6	
Benefits		
Number of First Payment	7,864	
Benefits Paid (000's)	\$ 27,133	
Weeks Compensated	177,325	
Average Wkly. Benefit Amount	\$ 194.98	
Average Duration of Claim (weeks)	17.9	
Exhaustions	3,089	
United States Consumer Price Index		
	SEPT 2011	
All Urban Consumers	226.9	



The civilian labor force and nonfarm **estimates** are prepared according to Bureau of Labor Statistics (BLS) methodology and are comparable with the U.S. and other states' data. For more information, go to page 15.

Economic Comparison

Seasonally Adjusted	PRELIMINARY SEPTEMBER 2011		REVISED AUGUST 2011		REVISED SEPTEMBER 2010	
	United States	Louisiana	United States	Louisiana	United States	Louisiana
Civilian Labor Force						
Labor Force	154,017,000	2,038,445	153,594,000	2,032,073	154,124,000	2,086,066
Employed	140,025,000	1,897,265	139,627,000	1,885,463	139,378,000	1,925,126
Unemployed	13,992,000	141,180	13,967,000	146,610	14,746,000	160,940
Unemployment Rate	9.1	6.9	9.1	7.2	9.6	7.7
Nonfarm Wage and Salary Employment	SEPT 2011	SEPT 2011	AUG 2011	AUG 2011	SEPT 2010	SEPT 2010
	United States	Louisiana	United States	Louisiana	United States	Louisiana
Total Nonfarm	131,334,000	1,927,500	131,231,000	1,913,400	129,844,000	1,882,600
Mining and Logging	805,000	54,500	800,000	54,100	725,000	52,600
Construction	5,551,000	125,800	5,525,000	123,900	5,514,000	121,100
Manufacturing	11,741,000	144,100	11,754,000	143,200	11,545,000	136,000
Trade, Transportation, and Utilities	24,952,000	370,400	24,945,000	370,500	24,627,000	363,100
Information	2,660,000	29,200	2,626,000	28,400	2,701,000	28,000
Financial Activities	7,603,000	95,100	7,611,000	95,200	7,616,000	93,200
Professional and Business Services	17,280,000	195,100	17,232,000	191,500	16,719,000	194,300
Education and Health Services	20,081,000	291,000	20,036,000	285,800	19,631,000	272,300
Leisure and Hospitality	13,223,000	198,100	13,227,000	200,600	13,103,000	194,800
Other Services	5,453,000	65,300	5,456,000	66,300	5,389,000	66,100
Government	21,985,000	358,900	22,019,000	353,900	22,274,000	361,100

All Employees Average Hours & Earnings

Construction	United States (Not Seasonally Adjusted)			Louisiana (Not Seasonally Adjusted)		
	SEPT 2011	AUG 2011	SEPT 2010	SEPT 2011	AUG 2011	SEPT 2010
Average Weekly Earnings	\$ 993.33	\$ 996.86	\$ 951.80	\$ 934.34	\$ 923.78	\$ 887.76
Average Weekly Hours	39.0	39.2	37.8	41.6	41.8	40.5
Average Hourly Wages	\$ 25.47	\$ 25.43	\$ 25.18	\$ 22.46	\$ 22.10	\$ 21.92
Manufacturing						
Average Weekly Earnings	\$ 959.78	\$ 951.82	\$ 941.41	\$ 1,024.00	\$ 1,015.17	\$ 1,019.27
Average Weekly Hours	40.6	40.4	40.3	40.0	41.1	41.4
Average Hourly Wages	\$ 23.64	\$ 23.56	\$ 23.36	\$ 25.60	\$ 24.70	\$ 24.62

Louisiana Unemployment Insurance Activities

Claims	SEPT 2011	AUG 2011	SEPT 2010	% Change From	
				AUG 2011	SEPT 2010
Initial New & Renewals	13,221	16,523	15,294	-20.0	-13.6
Continued Weekly Intrastate Only	156,688	208,409	187,321	-24.8	-16.4
Insured Unemployment Rate*	2.6	2.6	3.1	0.4	-15.9
Benefits					
Number of First Payment	7,864	9,248	6,818	-15.0	15.3
Benefits Paid (000's)	\$ 27,133	\$ 34,350	\$ 29,713	-21.0	-8.7
Weeks Compensated	177,325	177,325	153,458	0.0	15.6
Average Wkly. Benefit Amount	\$ 194.98	\$ 195.39	\$ 195.59	-0.2	-0.3
Average Duration of Claim (w eeks)	17.9	19.2	22.5	-6.9	-20.7
Exhaustions	3,089	4,504	4,429	-31.4	-30.3

* Insured unemployment rate is for the week including the 12th of the month.

United States Consumer Price Index

	SEPT 2011	% Change From:		AUG 2011	% Change From:	
	Index	Prior Month	Prior Year	Index	Prior Month	Prior Year
All Urban Consumers	226.9	0.2	3.9	226.5	0.3	3.8

Not Seasonally Adjusted State and Area Employment

Not seasonally adjusted nonfarm employment for Louisiana was estimated at 1,924,600 for September 2011. Over the month, employment rose by 18,000 jobs from August, while over the year employment gained 41,300 jobs. Goods-producing employment gained 2,800 jobs over the month, while the service-providing employment added 15,200 jobs when compared to August. Over the year, goods-producing industries gained 13,900 jobs while the service-providing sector gained 27,400.

Total nonfarm employment in September for the Alexandria MSA was 65,100, a decrease of 600 jobs from August, but a gain of 1,400 from a year ago. The goods-producing sector showed no change over the month, but added 100 jobs over the year. Service-providing employment decreased by 600 jobs from August but gained 1,300 jobs from September 2010.

Total nonfarm employment for the Baton Rouge MSA was estimated at 363,200 for September 2011. Over the month, the MSA showed an increase of 4,100 jobs, while over the year, nonfarm employment declined by 800 jobs. Goods-producing employment showed a gain of 1,800 jobs from last month and 2,100 jobs from last year. The service-providing sector added 2,300 jobs from August but lost 2,900 jobs over the year.

The Houma MSA nonfarm employment was estimated at 96,400 for September 2011. This shows a loss from August of 200 jobs but an over-the-year gain of 2,900. Goods-producing added 200 over the month, while adding 800 jobs from last year. Service-providing fell by 400 jobs from last month but picked up 2,100 jobs over the year.

Total nonfarm employment for the Lafayette MSA was estimated at 151,800 for September 2011. This represents a gain from August of 1,600 jobs and an increase of 4,400 jobs from last year. Over the month, goods-producing employment rose by 600, while the service-providing sector added 1,000 jobs. Over the year, the goods-producing sector gained 2,100 jobs, while the service-providing sector added 2,300 jobs.

Total nonfarm employment for the Lake Charles MSA was 90,900 for September 2011. This represents a gain of 200 jobs from August, and an increase of 2,900 jobs over the year. Over the month, the goods-producing sector added 200 jobs, while the service-providing sector showed no change. The goods-producing sector added 600 jobs from last September, while the service-providing sector increased by 2,300 jobs over the year.

Total nonfarm employment for the Monroe MSA was estimated at 75,300 for September 2011. This shows no change over the month, but a decline of 400 jobs over the year. Goods-producing employment added 100 from August, while adding 200 jobs from September 2010. The service-providing sector lost 100 jobs from August and 600 jobs over the year.

Total nonfarm employment for the New Orleans MSA was 528,600 for September 2011. Over the month, the MSA added 3,700 jobs, while over the year saw an increase of 10,900 positions. Goods-producing employment showed a decline of 200 jobs from August, and showed no change from September 2010. The service-providing sector increased by 3,900 jobs from August, and added 10,900 jobs from September 2010.

Total nonfarm employment for the Shreveport MSA was 181,500 for September 2011. This shows no change from last month but a gain of 3,600 from September 2010. Goods-producing employment showed no change from August but a gain of 1,500 from September 2010. Service-providing employment showed no change over the month but added 2,100 jobs compared to last year.

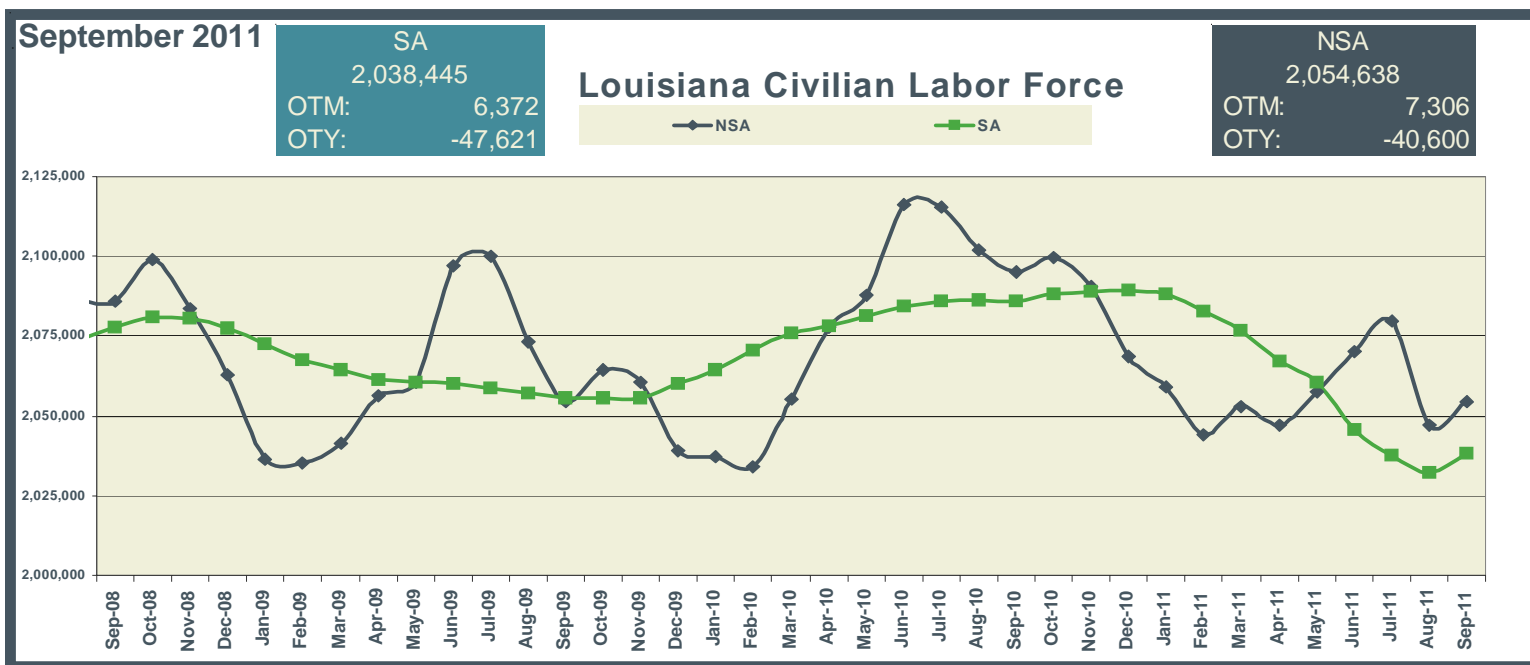
Keys to Graphs

The following graphs have been designed to reflect the over-the-year trends in the statistical data. Below are the most frequently used abbreviations.

- OTM over-the-month change in employment
- OTY over-the-year change in employment
- SA seasonally adjusted estimates
- NSA not seasonally adjusted estimates

Graphs for statewide reflect seasonally adjusted (SA) estimates compared to not seasonally adjusted (NSA) data.

Metropolitan Statistical Areas (MSAs) graphs denote nonfarm employment levels compared to a three year red trend line of the estimated employment. The navy lines in the graphs are the over-the-month changes for each year.

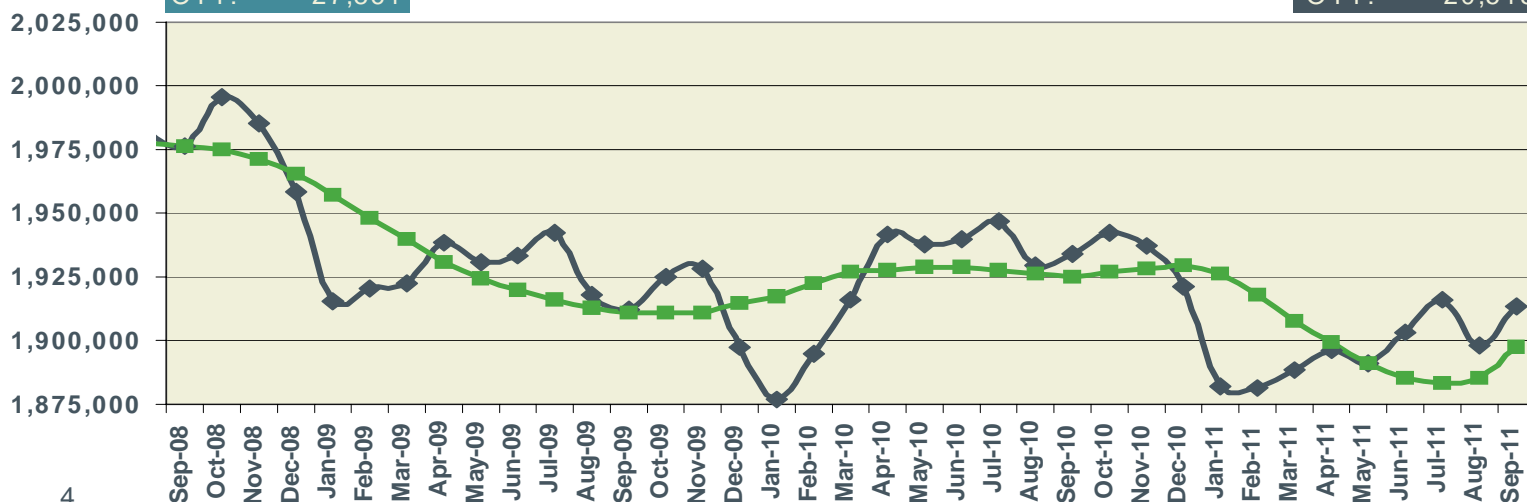


September 2011

Louisiana Civilian Labor Force Employment

SA 1,897,265
OTM: 11,802
OTY: -27,861

NSA 1,913,677
OTM: 15,495
OTY: -20,515

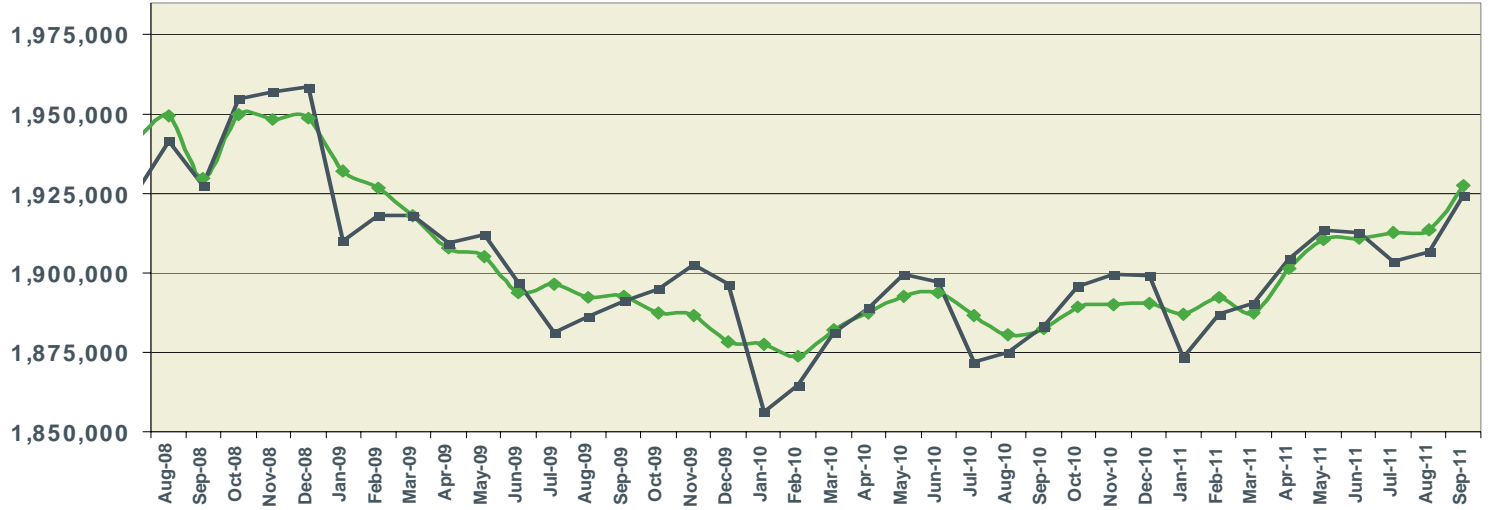


September 2011

SA
1,927,500
OTM: 14,100
OTY: 44,900

Louisiana Nonfarm Employment

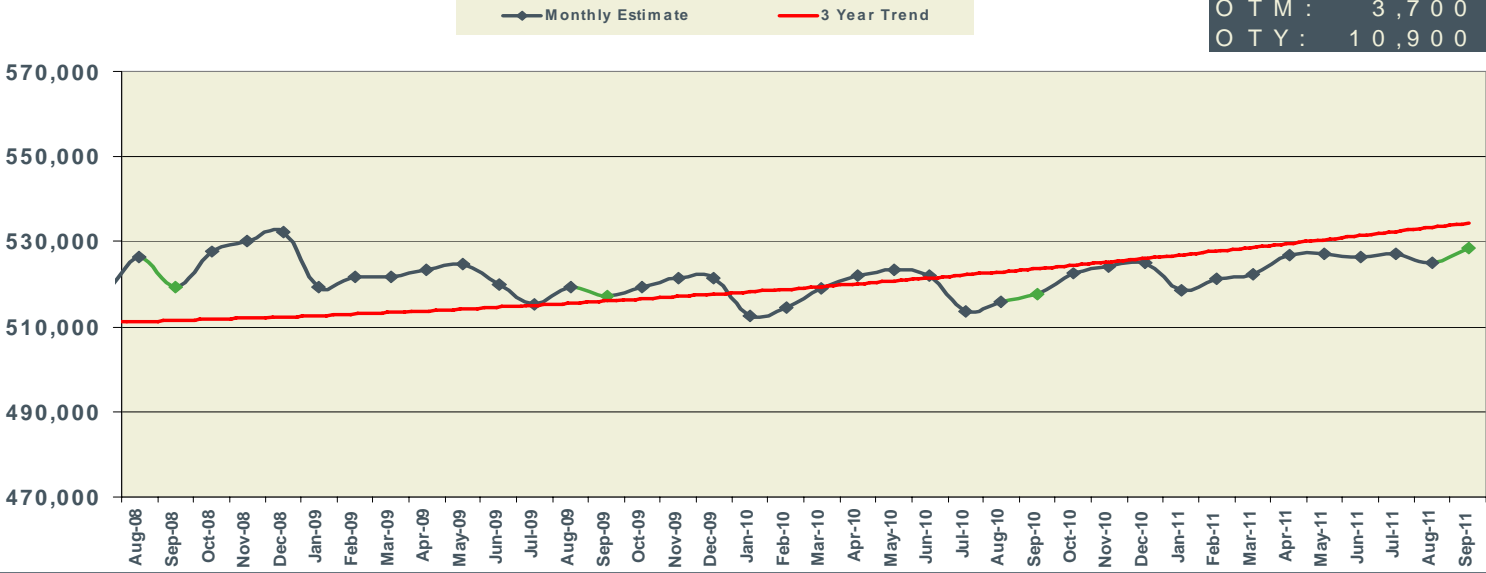
NSA
1,924,600
OTM: 18,000
OTY: 41,300



September 2011

New Orleans MSA Nonfarm Employment

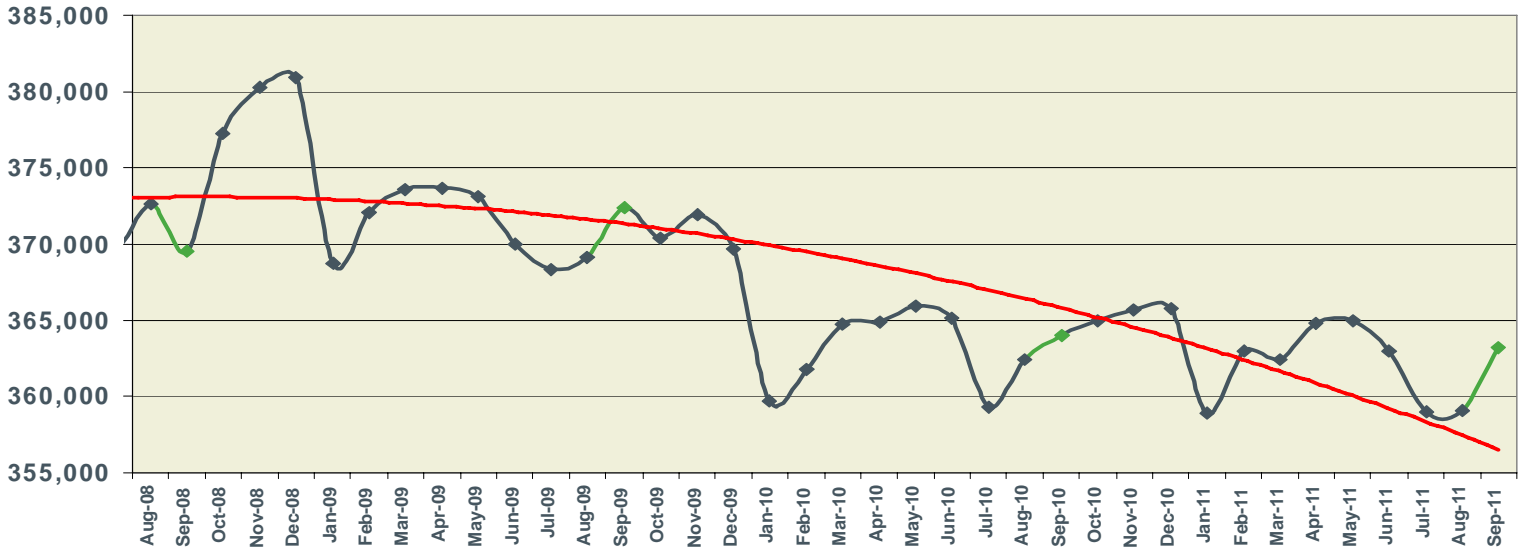
NSA
528,600
OTM: 3,700
OTY: 10,900



September 2011

Baton Rouge MSA Nonfarm Employment

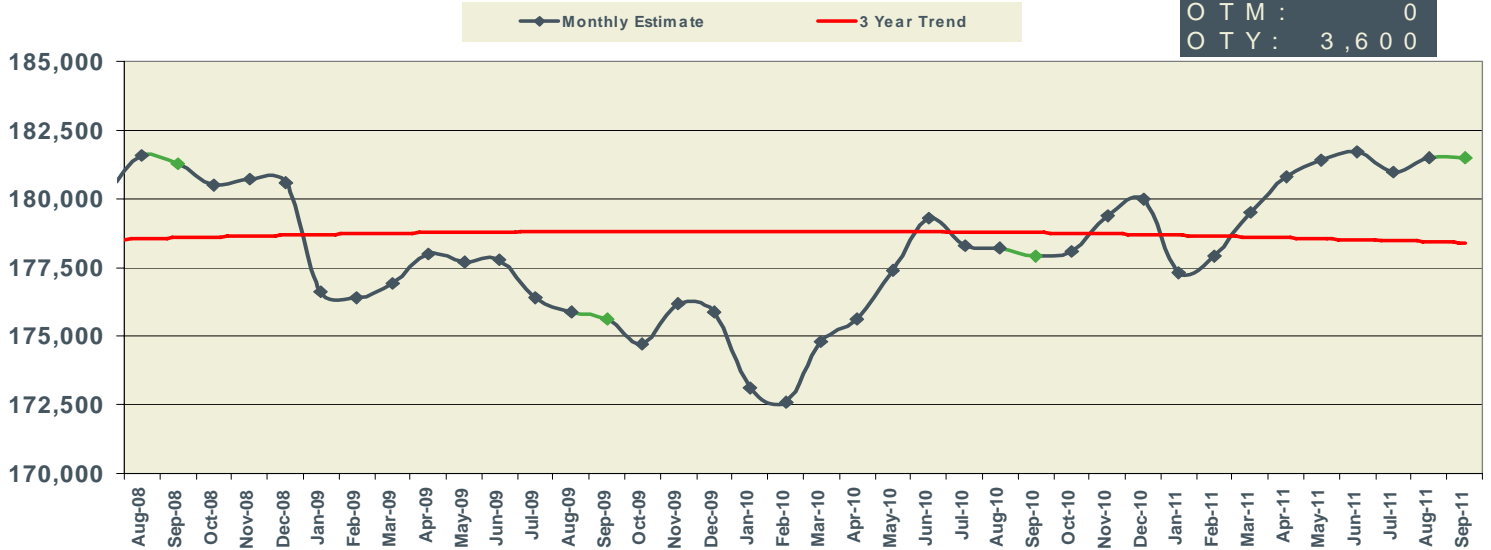
NSA
363,200
OTM: 4,100
OTY: -800



September 2011

Shreveport MSA Nonfarm Employment

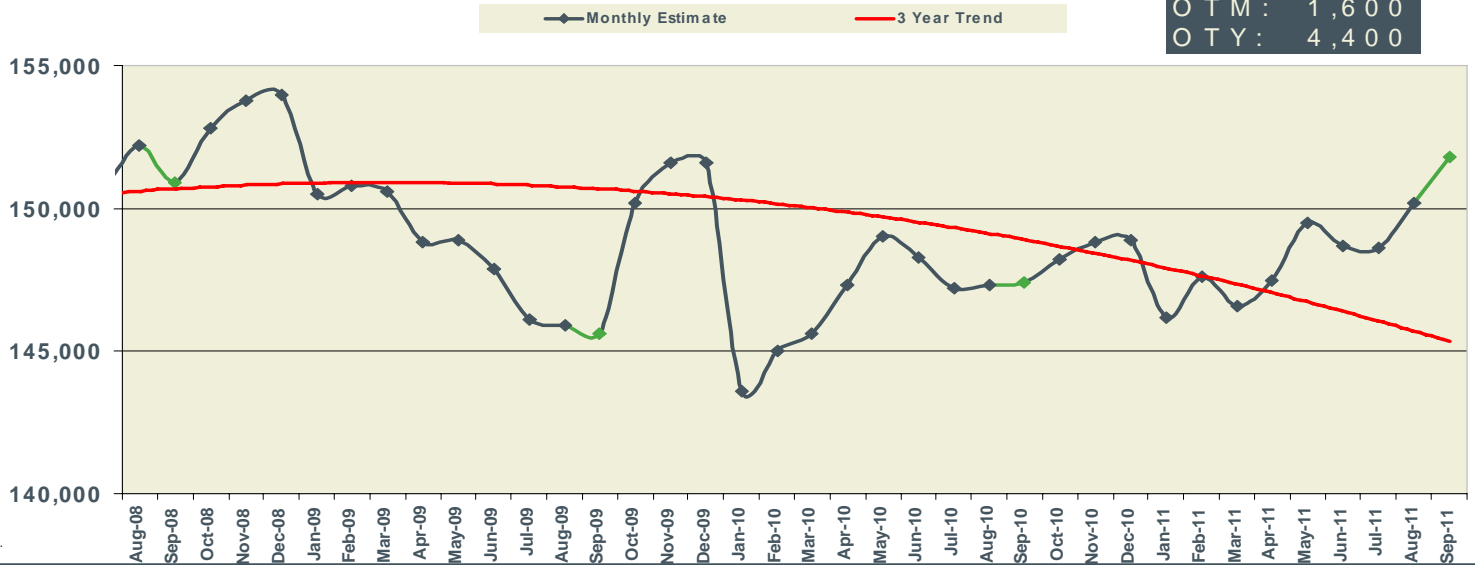
NSA	181,500
OTM :	0
OTY :	3,600



September 2011

Lafayette MSA Nonfarm Employment

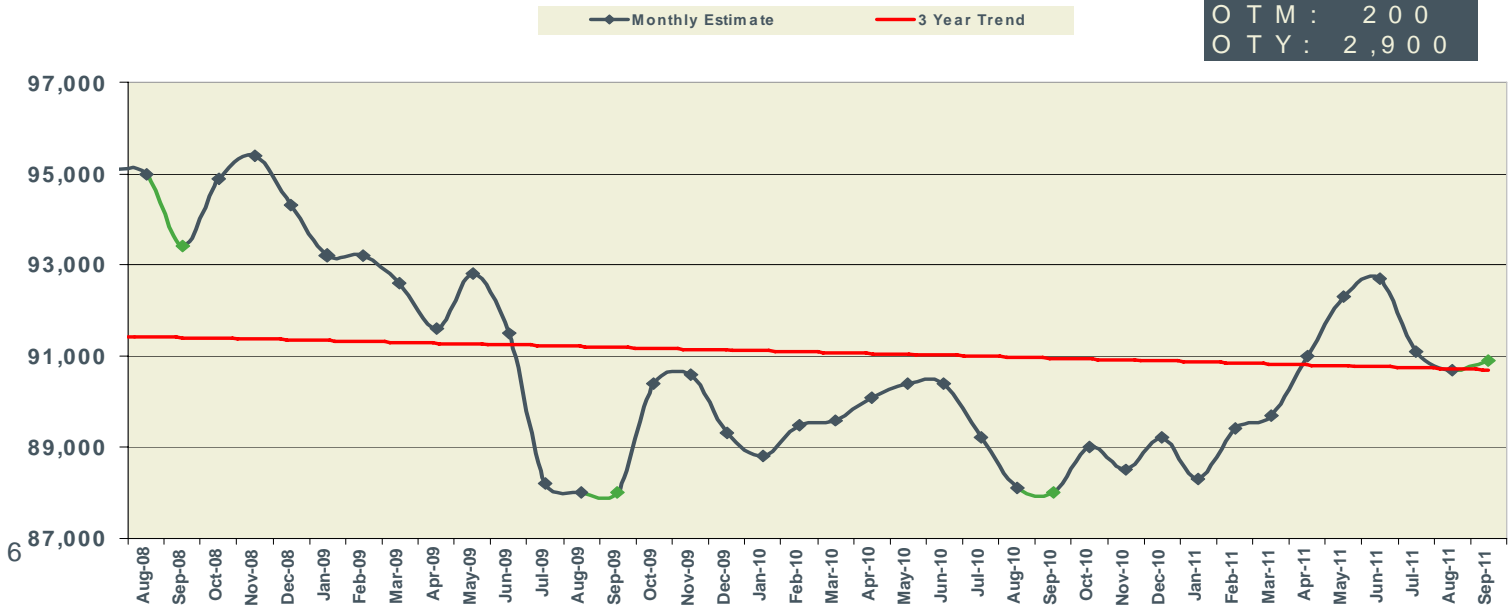
NSA	151,800
OTM :	1,600
OTY :	4,400



September 2011

Lake Charles MSA Nonfarm Employment

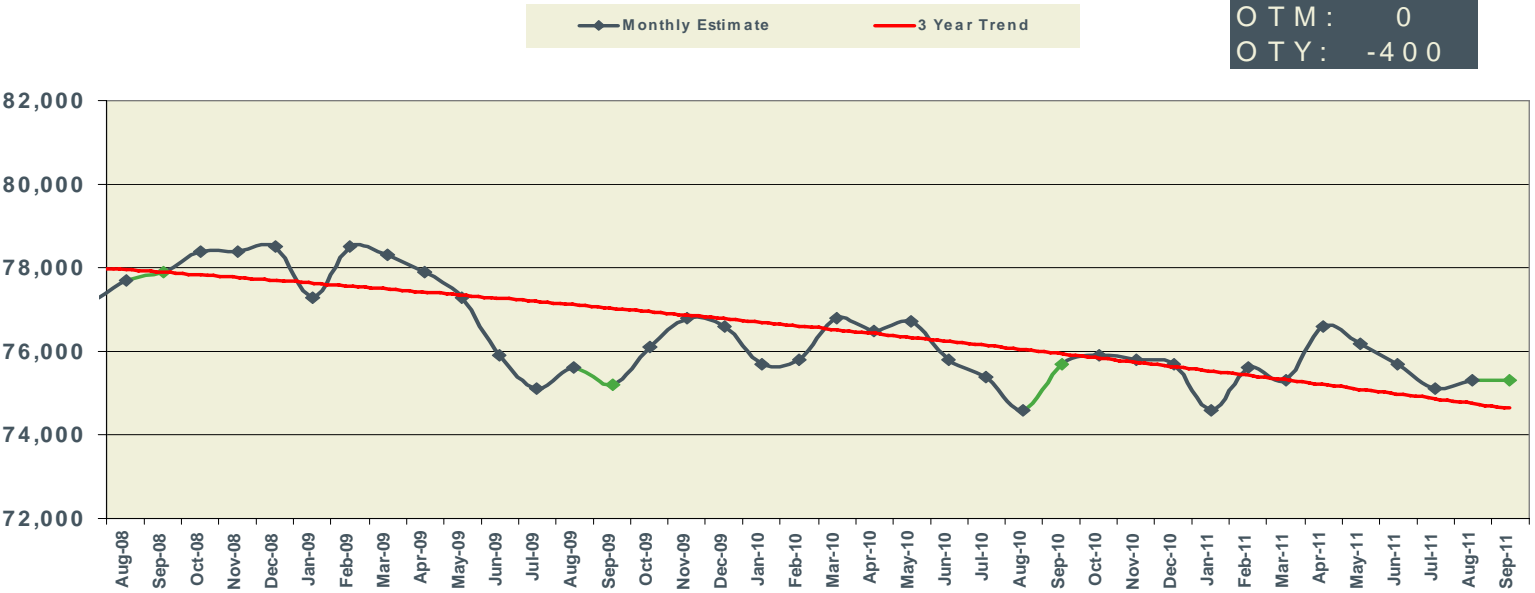
NSA	90,900
OTM :	200
OTY :	2,900



September 2011

Monroe MSA Nonfarm Employment

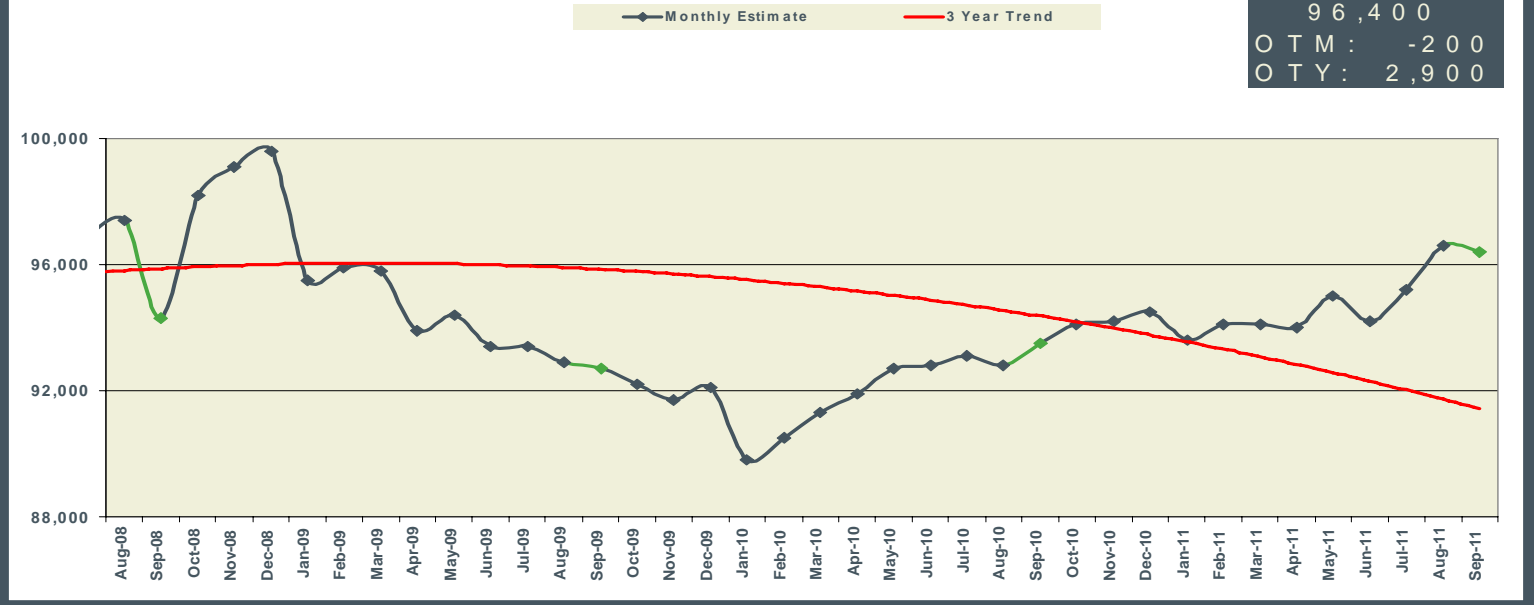
NSA
75,300
OTM: 0
OTY: -400



September 2011

Houma MSA Nonfarm Employment

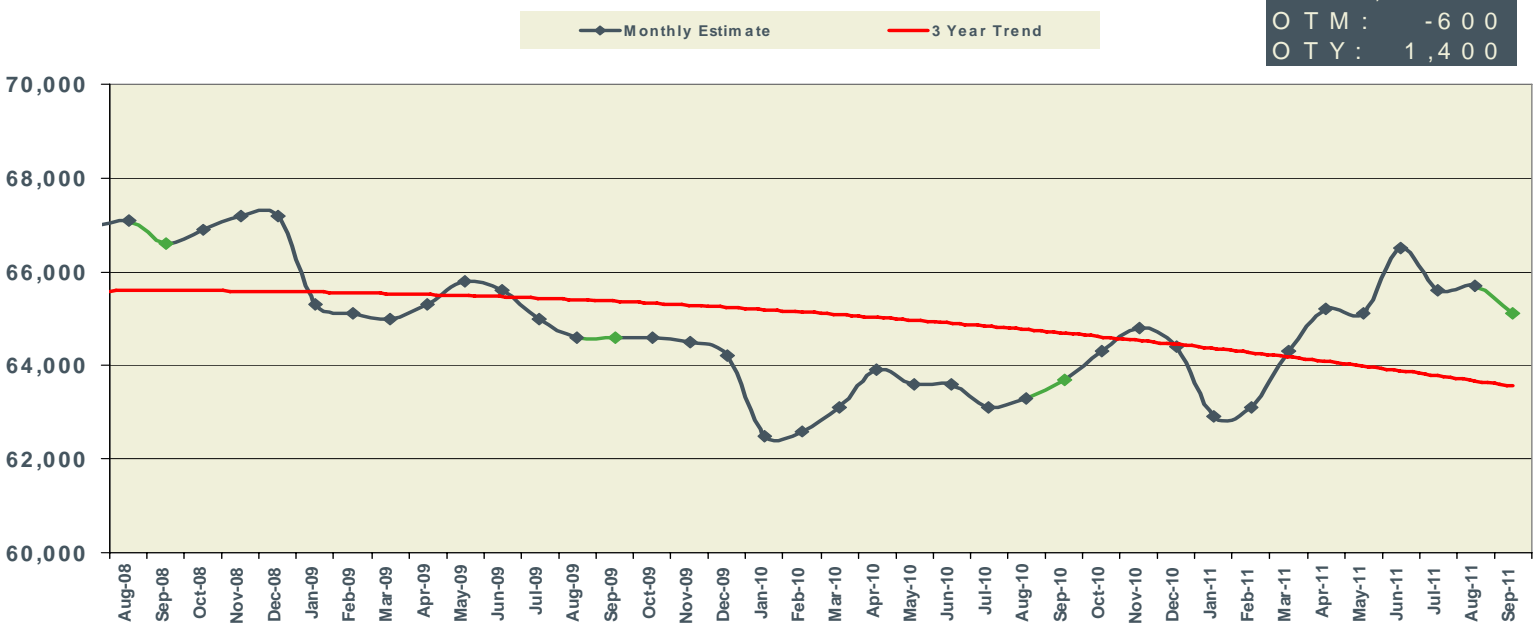
NSA
96,400
OTM: -200
OTY: 2,900



September 2011

Alexandria MSA Nonfarm Employment

NSA
65,100
OTM: -600
OTY: 1,400



8 LOUISIANA & MSAs NONFARM EMPLOYMENT									
Not Seasonally Adjusted	LOUISIANA			NEW ORLEANS-METAIRIE-KENNER MSA			BATON ROUGE MSA		
	PREL	REV	REV	PREL	REV	REV	PREL	REV	REV
	Sept 2011	Aug 2011	Sept 2010	Sept 2011	Aug 2011	Sept 2010	Sept 2011	Aug 2011	Sept 2010
Total Nonfarm	1,924,600	1,906,600	1,883,300	528,600	524,900	517,700	363,200	359,100	364,000
Total Private	1,565,600	1,560,000	1,522,300	447,400	443,300	436,300	286,900	287,000	285,900
Goods-Producing	325,300	322,500	311,400	69,400	69,600	69,400	66,700	64,900	64,600
Mining & Logging	54,700	54,200	52,500	7,500	7,500	7,500	2,000	2,000	2,000
Oil & Gas Extraction	8,700	8,700	8,600	2,900	2,900	2,900			
Crude Petroleum & Natural Gas Extraction	8,200	8,200	8,000						
Support Activities for Mining	40,500	40,200	40,000						
Drilling Oil & Gas Wells	9,100	9,300	8,900						
Construction	125,900	124,900	122,000	29,700	30,100	29,900	39,900	38,100	38,000
Construction of Buildings	20,800	21,100	21,900				7,200	7,000	6,900
Residential Building Construction	6,100	6,200	6,100						
Nonresidential Building Construction	14,700	14,900	15,800				6,600	6,400	6,000
Heavy & Civil Engineering Construction	40,100	39,400	39,300	8,600	8,600	8,700	13,700	13,000	13,300
Utility System Construction	19,900	19,900	19,200						
Specialty Trade Contractors	65,000	64,400	60,800	16,300	16,400	15,600	19,000	18,100	17,800
Manufacturing	144,700	143,400	136,900	32,200	32,000	32,000	24,800	24,800	24,600
Durable Goods	72,200	72,400	68,700	15,500	15,400	16,000			
Transportation Equipment Manufacturing	15,900	16,000	17,100	6,700	6,700	8,000			
Ship & Boat Building	10,900	10,900	11,800	5,500	5,400	6,100			
Nondurable Goods	72,500	71,000	68,200	16,700	16,600	16,000	16,800	16,800	16,900
Food Manufacturing	15,900	15,700	16,200						
Paper Manufacturing	7,100	7,100	7,200						
Petroleum & Coal Products Mfg. & Chemical Mfg.									
Petroleum & Coal Products Manufacturing	11,700	11,700	11,400						
Chemical Manufacturing	23,700	23,700	22,600	4,800	4,700	4,400	9,900	9,900	9,400
Basic Chemical Manufacturing	12,200	12,200	12,200				5,600	5,600	5,600
Service-Providing	1,599,300	1,584,100	1,571,900	459,200	455,300	448,300	296,500	294,200	299,400
Private Service-Providing	1,240,300	1,237,500	1,210,900	378,000	373,700	366,900	220,200	222,100	221,300
Trade, Transportation, & Utilities	368,600	370,000	363,200	102,800	103,500	102,200	63,900	64,100	64,000
Wholesale Trade	71,100	71,700	70,200	22,500	22,300	22,000	12,100	12,100	12,300
Merchant Wholesalers, Durable Goods	37,100	37,900	36,700	10,300	10,500	10,500			
Merchant Wholesalers, Nondurable Goods	24,000	24,100	24,700	7,800	7,800	7,800			
Retail Trade	215,500	216,800	215,000	55,400	56,400	56,000	40,000	40,200	40,000
Clothing & Clothing Accessories Stores, General Merchandise									
Motor Vehicle & Parts Dealers	25,500	25,800	25,900						
Building Material & Garden Equipment & Supplies Dealers	19,200	19,500	19,000						
Food & Beverage Stores	34,600	34,400	35,100						
Grocery Stores	30,400	30,200	30,500	8,000	7,900	8,200	5,600	5,500	5,600
Health & Personal Care Stores	15,400	15,500	15,400						
Gasoline Stations	18,600	18,700	18,400						
Clothing and Clothing Accessories Stores	17,400	17,700	17,600						
General Merchandise Stores	51,300	51,800	50,900	12,100	12,200	12,200	9,100	9,200	9,100
Department Stores	16,200	16,500	16,100				2,400	2,400	2,500
Transportation, Warehousing, & Utilities	82,000	81,500	78,000	24,900	24,800	24,200	11,800	11,800	11,700
Transportation and Warehousing	73,000	72,500	68,600						
Truck Transportation	16,200	16,300	16,500						
Support Activities for Transportation	20,500	20,400	19,200						
Information	28,700	28,400	27,500	8,900	8,900	8,700	5,200	5,200	4,900
Telecommunications	10,600	10,500	10,500						
Financial Activities	95,300	95,400	93,200	25,500	25,700	25,700	16,400	16,600	16,700
Finance & Insurance	65,300	65,400	62,600	18,400	18,500	18,100	11,700	11,800	11,900
Credit Intermediation & Related Activities	31,500	31,700	31,900	7,400	7,500	7,500			
Depository Credit Intermediation	22,500	22,700	22,800	5,800	5,800	5,800	4,300	4,300	4,300
Insurance Carriers & Related Activities	26,400	26,500	26,700						
Real Estate & Rental & Leasing	30,000	30,000	30,600						
Professional & Business Services	194,700	191,800	193,500	69,100	66,300	67,500	41,200	41,400	41,200
Professional, Scientific, & Technical Services	79,000	78,100	78,200	30,000	28,800	28,500	18,700	19,400	18,000
Legal Services	18,900	19,100	18,800	8,500	8,200	8,200			
Accounting, Tax Preparation, Bookkeeping & Payroll Services	9,200	9,200	9,400						
Architectural, Engineering, & Related Services	24,000	24,200	22,900						
Management of Companies & Enterprises	23,800	23,700	23,900	8,400	7,900	8,100			
Admin. & Support & Waste Mgmt. & Remediation Serv.	91,900	90,000	91,400	30,700	29,600	30,900	18,100	18,100	18,300
Administrative & Support Services	81,100	79,000	81,900	28,100	26,900	28,200			
Employment Services	29,100	28,800	29,700	11,000	9,900	10,300			
Services to Buildings & Dwellings	19,700	20,100	19,700						
Education & Health Services	290,900	284,900	272,000	80,400	77,200	74,300	48,700	49,100	49,100
Educational Services	37,600	35,700	35,700	20,900	18,200	19,000			
Colleges, Universities, & Professional Schools	17,900	16,200	18,700	11,500	9,800	10,500			
Health Care & Social Assistance	253,300	249,200	236,300	59,500	59,000	55,300	42,700	44,000	42,200
Ambulatory Health Care Services	93,000	91,000	85,900	22,100	22,000	21,000	18,400	18,300	17,400
Offices of Physicians	35,800	34,900	33,300						
Home Health Care Services	22,500	22,500	21,600						
Hospitals	69,300	68,500	65,800	18,700	18,700	18,200	11,800	11,700	11,500
Nursing & Residential Care Facilities	43,700	43,200	41,200						
Nursing Care Facilities	27,000	26,900	25,900						
Social Assistance	47,300	46,500	43,400						
Leisure & Hospitality	197,000	201,000	195,100	72,400	73,100	69,800	32,000	32,800	32,400
Arts, Entertainment, & Recreation	26,900	28,300	28,800	9,600	10,200	10,200			
Amusement, Gambling, & Recreation Industries	22,100	23,800	22,500	6,200	6,700	6,200			
Gambling Industries	10,000	10,100	10,400	2,100	2,100	2,000			
Accommodation & Food Services	170,100	172,700	166,300	62,800	62,900	59,600	27,200	27,200	27,300
Accommodation	28,900	29,400	26,800	13,300	13,400	12,800			
Food Services & Drinking Places	141,200	143,300	139,500	49,500	49,500	46,800	25,300	25,400	25,200
Other Services	65,100	66,000	66,400	18,900	19,000	18,700	12,800	12,900	13,000
Repair & Maintenance	19,100	19,700	19,300						
Automotive Repair & Maintenance	10,600	10,600	10,700						
Personal & Laundry Services	15,400	15,400	15,400						
Government	359,000	346,600	361,000	81,200	81,600	81,400	76,300	72,100	78,100
Federal Government	31,200	31,400	31,500	12,300	12,400	12,400	2,900	2,900	3,100
State Government	109,300	103,600	112,300	18,500	18,200	19,800	40,900	37,700	41,700
Local Government	218,500	211,600	217,200	50,400	51,000	49,200	32,500	31,500	33,300

LOUISIANA & MSAs NONFARM EMPLOYMENT

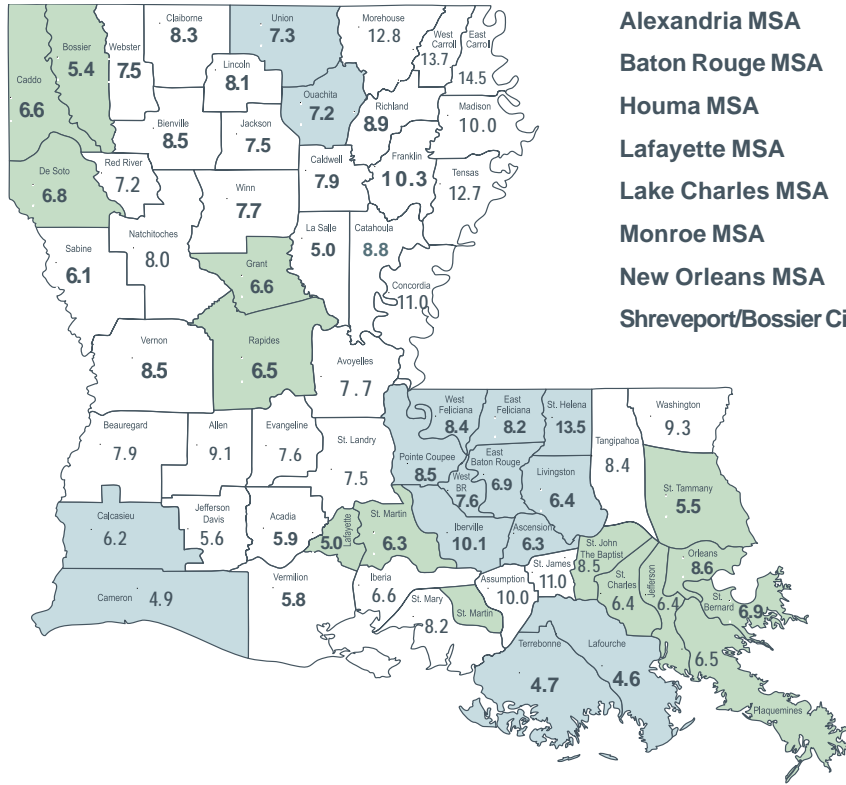
9

Not Seasonally Adjusted	SHREVEPORT-BOSSIER CITY MSA			LAFAYETTE MSA			LAKE CHARLES MSA		
	PREL	REV	REV	PREL	REV	REV	PREL	REV	REV
	SEPT 2011	AUG 2011	SEPT 2010	SEPT 2011	AUG 2011	SEPT 2010	SEPT 2011	AUG 2011	SEPT 2010
Total Nonfarm	181,500	181,500	177,900	151,800	150,200	147,400	90,900	90,700	88,000
Total Private	145,500	145,700	142,900	134,300	132,800	130,100	75,300	75,600	72,400
Goods-Producing	26,800	26,800	25,300	33,300	32,700	31,200	18,600	18,400	18,000
Mining & Logging	6,600	6,600	6,200	16,700	16,400	15,300	1,100	1,100	1,100
Oil & Gas Extraction									
Crude Petroleum & Natural Gas Extraction									
Support Activities for Mining				14,200	13,900	13,400			
Drilling Oil & Gas Wells									
Construction	9,700	9,700	9,100	6,100	6,000	6,400	8,000	7,900	7,800
Construction of Buildings									
Residential Building Construction									
Nonresidential Building Construction									
Heavy & Civil Engineering Construction							3,400	3,300	3,400
Utility System Construction									
Specialty Trade Contractors									
Manufacturing	10,500	10,500	10,000	10,500	10,300	9,500	9,500	9,400	9,100
Durable Goods									
Transportation Equipment Manufacturing	1,000	1,100	1,200						
Ship & Boat Building									
Nondurable Goods							7,100	7,100	7,000
Food Manufacturing									
Paper Manufacturing									
Petroleum & Coal Products Mfg. & Chemical Mfg.							6,600	6,600	6,400
Petroleum & Coal Products Manufacturing									
Chemical Manufacturing									
Basic Chemical Manufacturing									
Service-Providing	154,700	154,700	152,600	118,500	117,500	116,200	72,300	72,300	70,000
Private Service-Providing	118,700	118,900	117,600	101,000	100,100	98,900	56,700	57,200	54,400
Trade, Transportation, & Utilities	34,300	34,600	33,100	29,400	29,200	28,700	16,400	16,500	16,200
Wholesale Trade	6,800	6,800	6,600	7,900	7,800	7,600			
Merchant Wholesalers, Durable Goods									
Merchant Wholesalers, Nondurable Goods									
Retail Trade	21,000	21,200	20,400	17,500	17,400	17,400	10,000	10,000	9,900
Clothing & Clothing Accessories Stores, General Merchandise							3,300	3,300	3,300
Motor Vehicle & Parts Dealers									
Building Material & Garden Equipment & Supplies Dealers									
Food & Beverage Stores									
Grocery Stores									
Health & Personal Care Stores									
Gasoline Stations									
Clothing and Clothing Accessories Stores									
General Merchandise Stores	4,500	4,600	4,400	3,600	3,600	3,600			
Department Stores									
Transportation, Warehousing, & Utilities	6,500	6,600	6,100	4,000	4,000	3,700			
Transportation and Warehousing									
Truck Transportation									
Support Activities for Transportation									
Information	4,800	4,800	4,700	2,700	2,700	2,700			
Telecommunications									
Financial Activities	7,200	7,200	7,100	8,400	8,400	8,400			
Finance & Insurance									
Credit Intermediation & Related Activities									
Depository Credit Intermediation									
Insurance Carriers & Related Activities									
Real Estate & Rental & Leasing									
Professional & Business Services	15,900	15,500	16,600	17,600	17,300	17,300	6,900	6,800	6,800
Professional, Scientific, & Technical Services				8,300	8,200	7,900			
Legal Services									
Accounting, Tax Preparation, Bookkeeping & Payroll Services									
Architectural, Engineering, & Related Services									
Management of Companies & Enterprises									
Admin. & Support & Waste Mgmt. & Remediation Serv.	9,900	9,800	10,200						
Administrative & Support Services									
Employment Services									
Services to Buildings & Dwellings									
Education & Health Services	26,700	26,500	26,100	23,000	22,600	22,000			
Educational Services									
Colleges, Universities, & Professional Schools									
Health Care & Social Assistance	25,700	25,600	25,100	21,000	20,700	19,900			
Ambulatory Health Care Services									
Offices of Physicians									
Home Health Care Services									
Hospitals	9,800	9,800	9,600	5,300	5,200	5,300	3,500	3,500	3,400
Nursing & Residential Care Facilities									
Nursing Care Facilities									
Social Assistance									
Leisure & Hospitality	21,700	22,100	21,900	15,100	15,100	14,900	11,600	11,800	11,600
Arts, Entertainment, & Recreation	5,600	5,800	6,000						
Amusement, Gambling, & Recreation Industries	5,400	5,500	5,700						
Gambling Industries	4,200	4,200	4,400						
Accommodation & Food Services	16,100	16,300	15,900	13,300	13,200	13,100	10,300	10,400	10,200
Accommodation									
Food Services & Drinking Places	13,100	13,300	13,100	12,400	12,200	12,100			
Other Services	8,100	8,200	8,100	4,800	4,800	4,900			
Repair & Maintenance									
Automotive Repair & Maintenance									
Personal & Laundry Services									
Government	36,000	35,800	35,000	17,500	17,400	17,300	15,600	15,100	15,600
Federal Government	4,800	4,800	4,700	1,100	1,100	1,100	600	600	600
State Government	11,800	11,500	11,000	5,600	5,600	5,500	4,200	3,700	4,100
Local Government	19,400	19,500	19,300	10,800	10,700	10,700	10,800	10,800	10,900

	MONROE MSA			HOUMA-BAYOU CANE- THIBODAU MSA			ALEXANDRIA MSA		
	PREL	REV	REV	PREL	REV	REV	PREL	REV	REV
	SEPT 2011	AUG 2011	SEPT 2010	SEPT 2011	AUG 2011	SEPT 2010	SEPT 2011	AUG 2011	SEPT 2010
<i>Not Seasonally Adjusted</i>									
Total Nonfarm	75,300	75,300	75,700	96,400	96,600	93,500	65,100	65,700	63,700
Total Private	61,300	61,600	61,400	82,800	83,000	79,700	50,400	51,200	48,800
Goods-Producing	10,600	10,500	10,400	20,900	20,700	20,100	8,600	8,600	8,500
Mining & Logging				5,900	5,800	5,700			
Oil & Gas Extraction									
Crude Petroleum & Natural Gas Extraction									
Support Activities for Mining				4,800	4,800	4,800			
Drilling Oil & Gas Wells									
Construction				6,000	6,000	5,800			
Construction of Buildings									
Residential Building Construction									
Nonresidential Building Construction									
Heavy & Civil Engineering Construction									
Utility System Construction									
Specialty Trade Contractors									
Manufacturing	7,000	7,000	6,800						
Durable Goods									
Transportation Equipment Manufacturing									
Ship & Boat Building									
Nondurable Goods	5,200	5,100	5,000						
Food Manufacturing									
Paper Manufacturing									
Petroleum & Coal Products Mfg. & Chemical Mfg.									
Petroleum & Coal Products Manufacturing									
Chemical Manufacturing									
Basic Chemical Manufacturing									
Service-Providing	64,700	64,800	65,300	75,500	75,900	73,400	56,500	57,100	55,200
Private Service-Providing	50,700	51,100	51,000	61,900	62,300	59,600	41,800	42,600	40,300
Trade, Transportation, & Utilities	13,700	13,800	13,600	25,400	25,400	23,700	11,500	11,600	11,400
Wholesale Trade									
Merchant Wholesalers, Durable Goods									
Merchant Wholesalers, Nondurable Goods									
Retail Trade	9,300	9,300	9,300	10,600	10,700	10,600	7,700	7,700	7,700
Clothing & Clothing Accessories Stores, General Merchandise	3,300	3,400	3,300						
Motor Vehicle & Parts Dealers									
Building Material & Garden Equipment & Supplies Dealers									
Food & Beverage Stores									
Grocery Stores									
Health & Personal Care Stores									
Gasoline Stations									
Clothing and Clothing Accessories Stores									
General Merchandise Stores									
Department Stores									
Transportation, Warehousing, & Utilities									
Transportation and Warehousing									
Truck Transportation									
Support Activities for Transportation				4,500	4,500	4,400			
Information									
Telecommunications									
Financial Activities									
Finance & Insurance									
Credit Intermediation & Related Activities									
Depository Credit Intermediation									
Insurance Carriers & Related Activities									
Real Estate & Rental & Leasing									
Professional & Business Services	7,300	7,200	7,200						
Professional, Scientific, & Technical Services									
Legal Services									
Accounting, Tax Preparation, Bookkeeping & Payroll Services									
Architectural, Engineering, & Related Services									
Management of Companies & Enterprises									
Admin. & Support & Waste Mgmt. & Remediation Serv.									
Administrative & Support Services				5,400	5,200	5,000			
Employment Services				3,800	3,600	3,500			
Services to Buildings & Dwellings									
Education & Health Services	13,600	13,400	13,300						
Educational Services									
Colleges, Universities, & Professional Schools									
Health Care & Social Assistance									
Ambulatory Health Care Services									
Offices of Physicians									
Home Health Care Services									
Hospitals	3,700	3,600	3,500				4,400	4,400	4,300
Nursing & Residential Care Facilities									
Nursing Care Facilities									
Social Assistance									
Leisure & Hospitality	6,800	6,900	6,800	7,700	7,800	7,600			
Arts, Entertainment, & Recreation									
Amusement, Gambling, & Recreation Industries									
Gambling Industries									
Accommodation & Food Services									
Accommodation									
Food Services & Drinking Places									
Other Services									
Repair & Maintenance									
Automotive Repair & Maintenance									
Personal & Laundry Services									
Government	14,000	13,700	14,300	13,600	13,600	13,800	14,700	14,500	14,900
Federal Government	600	600	600	400	400	500	2,900	3,000	2,900
State Government	4,300	4,000	4,500	3,100	2,600	3,300	4,500	4,500	4,800
Local Government	9,100	9,100	9,200	10,100	10,600	10,000	7,300	7,000	7,200

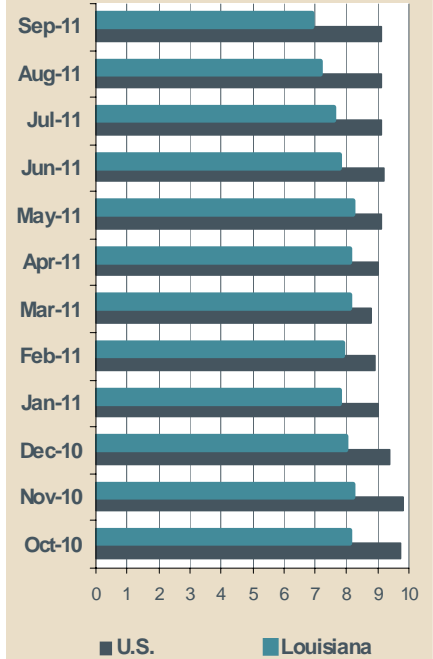
Louisiana Unemployment Rates (Not Seasonally Adjusted)

September 2011



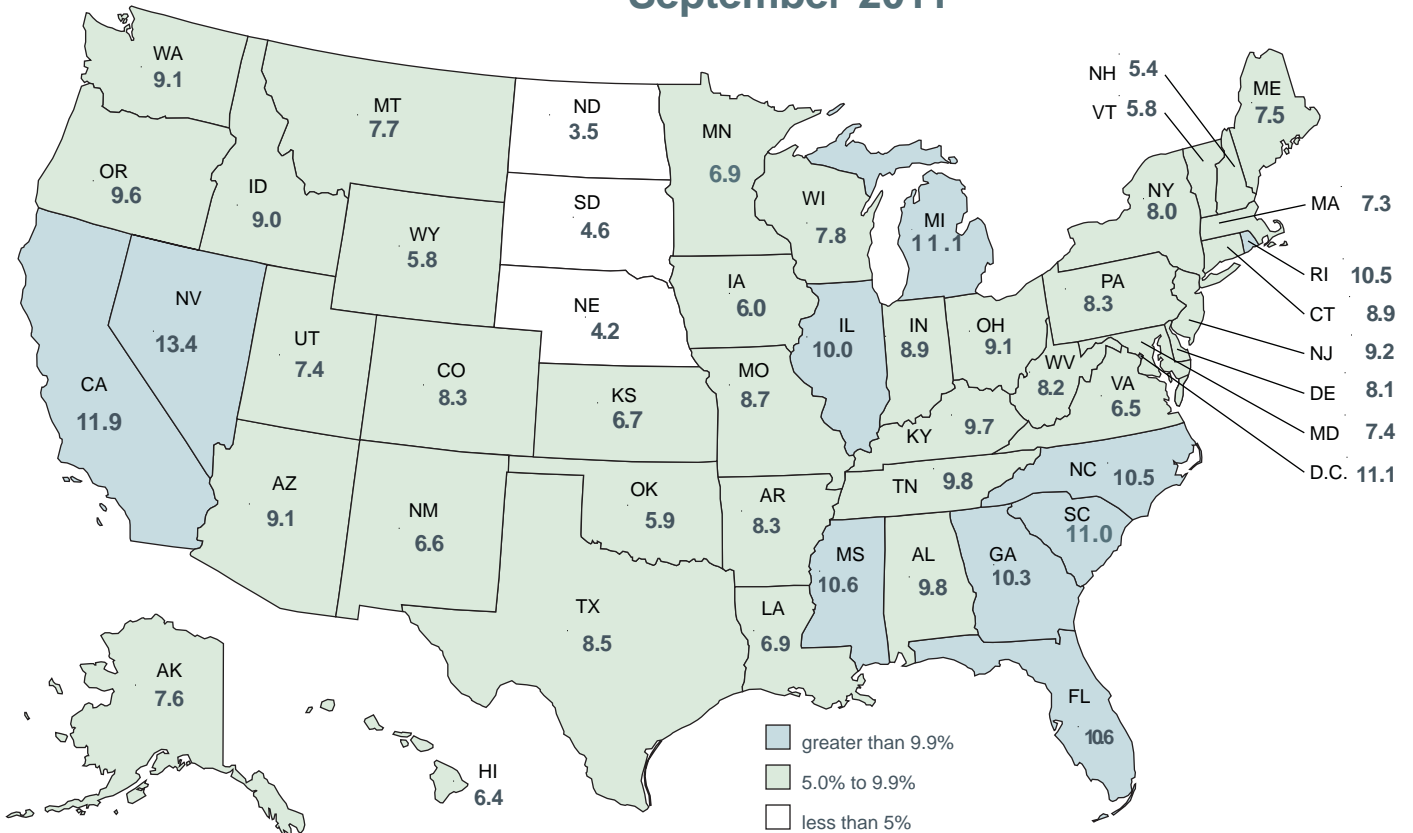
Statewide	Rate (%)
Statewide	6.9
Alexandria MSA	6.5
Baton Rouge MSA	7.0
Houma MSA	4.7
Lafayette MSA	5.2
Lake Charles MSA	6.1
Monroe MSA	7.2
New Orleans MSA	6.9
Shreveport/Bossier City MSA	6.3

United States - Louisiana Unemployment Rates (Seasonally Adjusted)



United States Unemployment Rates (Seasonally Adjusted)

September 2011



United States Rate 9.1

CIVILIAN LABOR FORCE (Not Seasonally Adjusted)

Area	Preliminary September 2011			Revised August 2011			Revised September 2010		
	Employed	Unemployed	Rate	Employed	Unemployed	Rate	Employed	Unemployed	Rate
UNITED STATES	140,502,000	13,520,000	8.8	140,335,000	14,008,000	9.1	139,715,000	14,140,000	9.2
LOUISIANA	1,913,677	140,961	6.9	1,898,182	149,150	7.3	1,934,192	161,046	7.7
ALEXANDRIA MSA	64,479	4,515	6.5	64,910	4,817	6.9	64,714	5,067	7.3
Grant	8,069	574	6.6	8,123	682	7.7	8,099	648	7.4
Rapides	56,410	3,941	6.5	56,787	4,135	6.8	56,615	4,419	7.2
BATON ROUGE MSA	345,231	26,132	7.0	340,059	27,868	7.6	352,463	29,771	7.8
Ascension	47,260	3,164	6.3	46,552	3,363	6.7	48,250	3,746	7.2
East Baton Rouge	199,400	14,828	6.9	196,412	15,914	7.5	203,577	16,678	7.6
East Feliciana	7,334	651	8.2	7,224	698	8.8	7,488	756	9.2
Iberville	10,971	1,232	10.1	10,807	1,259	10.4	11,201	1,347	10.7
Livingston	53,981	3,693	6.4	53,173	3,984	7.0	55,112	4,389	7.4
Pointe Coupee	8,636	807	8.5	8,507	880	9.4	8,817	877	9.0
St. Helena	3,680	573	13.5	3,625	584	13.9	3,757	592	13.6
West Baton Rouge	9,691	792	7.6	9,546	773	7.5	9,894	965	8.9
West Feliciana	4,278	392	8.4	4,214	414	8.9	4,368	420	8.8
HOUMA-BAYOU CANE- THIBODAUX MSA	99,722	4,890	4.7	99,622	5,145	4.9	99,125	5,624	5.4
Lafourche	47,088	2,285	4.6	47,041	2,430	4.9	46,806	2,536	5.1
Terrebonne	52,634	2,605	4.7	52,581	2,715	4.9	52,319	3,088	5.6
LAFAYETTE MSA	129,951	7,113	5.2	128,189	7,540	5.6	129,404	8,379	6.1
Lafayette	107,456	5,603	5.0	105,999	5,957	5.3	107,003	6,600	5.8
St. Martin	22,495	1,510	6.3	22,190	1,583	6.7	22,401	1,779	7.4
LAKE CHARLES MSA	88,653	5,778	6.1	88,317	6,191	6.6	87,802	6,931	7.3
Calcasieu	85,739	5,628	6.2	85,414	6,037	6.6	84,916	6,742	7.4
Cameron	2,914	150	4.9	2,903	154	5.0	2,886	189	6.1
MONROE MSA	73,537	5,734	7.2	73,249	6,092	7.7	75,625	6,571	8.0
Ouachita	64,554	5,026	7.2	64,301	5,342	7.7	66,387	5,747	8.0
Union	8,983	708	7.3	8,948	750	7.7	9,238	824	8.2
NEW ORLEANS-METairie- KENNER MSA	504,632	37,415	6.9	499,515	39,463	7.3	504,002	42,321	7.7
Jefferson	199,932	13,643	6.4	197,905	14,289	6.7	199,683	15,293	7.1
New Orleans City/Orleans	135,704	12,702	8.6	134,328	13,526	9.1	135,535	14,763	9.8
Plaquemines	7,535	526	6.5	7,459	565	7.0	7,526	508	6.3
St. Bernard	17,130	1,264	6.9	16,956	1,327	7.3	17,108	1,372	7.4
St. Charles	22,428	1,529	6.4	22,201	1,630	6.8	22,400	1,708	7.1
St. John Baptist	18,890	1,762	8.5	18,699	1,891	9.2	18,867	2,156	10.3
St. Tammany	103,012	5,988	5.5	101,967	6,236	5.8	102,883	6,521	6.0
SHREVEPORT-BOSSIER CITY MSA	175,163	11,728	6.3	174,492	12,471	6.7	173,251	13,522	7.2
Bossier	51,953	2,947	5.4	51,754	2,930	5.4	51,386	3,242	5.9
Caddo	112,469	8,002	6.6	112,038	8,456	7.0	111,241	9,321	7.7
De Soto	10,741	779	6.8	10,700	1,085	9.2	10,623	959	8.3
NON-MSA PARISHES									
Acadia (Crowley) ¹	23,629	1,480	5.9	23,589	1,549	6.2	24,607	1,754	6.7
Allen	7,810	778	9.1	7,823	846	9.8	7,938	896	10.1
Assumption (Pierre Part) ¹	9,067	1,008	10.0	9,039	1,068	10.6	9,348	1,144	10.9
Avoyelles	14,952	1,248	7.7	14,810	1,341	8.3	15,669	1,424	8.3
Beauregard (DeRidder) ¹	13,014	1,111	7.9	12,856	1,060	7.6	13,635	1,127	7.6
Bienville	5,850	546	8.5	5,815	566	8.9	6,050	581	8.8
Caldwell	4,017	345	7.9	3,975	371	8.5	4,153	429	9.4
Catahoula	3,813	368	8.8	3,809	397	9.4	3,891	432	10.0
Claiborne	5,966	540	8.3	5,899	578	8.9	6,170	623	9.2
Concordia (Natchez, MS-LA) ¹	6,270	772	11.0	6,332	708	10.1	6,561	786	10.7
East Carroll	2,260	382	14.5	2,249	418	15.7	2,498	474	15.9
Evangeline	11,624	955	7.6	11,633	1,065	8.4	11,737	1,058	8.3
Franklin	6,625	763	10.3	6,610	845	11.3	6,975	867	11.1
Iberia (New Iberia) ¹	30,565	2,158	6.6	30,428	2,280	7.0	30,958	2,583	7.7
Jackson (Ruston) ¹	5,854	474	7.5	5,769	472	7.6	6,145	440	6.7
Jefferson Davis (Jennings) ¹	13,337	796	5.6	13,381	857	6.0	13,783	936	6.4
La Salle	6,648	352	5.0	6,658	371	5.3	6,539	408	5.9
Lincoln (Ruston) ¹	17,385	1,526	8.1	17,134	1,721	9.1	18,253	1,673	8.4
Madison (Tallulah) ¹	3,943	440	10.0	3,875	477	11.0	4,143	489	10.6
Morehouse (Bastrop) ¹	9,268	1,358	12.8	9,199	1,423	13.4	9,818	1,616	14.1
Natchitoches (Natchitoches) ¹	15,067	1,313	8.0	14,922	1,434	8.8	16,164	1,449	8.2
Red River	3,441	268	7.2	3,428	295	7.9	3,427	347	9.2
Richland	8,065	792	8.9	7,983	868	9.8	8,365	917	9.9
Sabine	8,961	580	6.1	8,946	596	6.2	9,091	666	6.8
St. James	8,306	1,027	11.0	8,217	1,101	11.8	8,518	1,170	12.1
St. Landry (Opelousas, Eunice) ¹	35,072	2,849	7.5	34,856	2,981	7.9	35,792	3,242	8.3
St. Mary (Morgan City) ¹	20,332	1,828	8.2	20,187	1,954	8.8	20,955	2,193	9.5
Tangipahoa (Hammond) ¹	47,747	4,392	8.4	47,569	4,702	9.0	49,615	5,002	9.2
Tensas	1,512	220	12.7	1,493	232	13.4	1,650	289	14.9
Vermilion (Abbeville) ¹	22,042	1,348	5.8	21,928	1,455	6.2	22,613	1,700	7.0
Vernon (Fort Polk South) ¹	18,734	1,736	8.5	18,579	1,411	7.1	19,754	1,661	7.8
Washington (Bogalusa) ¹	13,631	1,404	9.3	13,515	1,484	9.9	14,130	1,601	10.2
Webster (Mindon) ¹	18,209	1,467	7.5	18,050	1,489	7.6	18,880	1,726	8.4
West Carroll	3,384	539	13.7	3,366	615	15.4	3,690	593	13.8
Winn	5,909	493	7.7	5,905	531	8.3	6,290	564	8.2

¹In addition to the eight (8) Metropolitan Statistical Areas (MSAs) in Louisiana, there are seventeen (17) Micropolitan Statistical Areas (MCs): Jackson and Lincoln Parishes combine to constitute one MC area. Civilian Labor Force can be derived by adding employed and unemployed. For related information or data, please visit: www.bls.gov/lau/home.htm.

LOUISIANA - PRIVATE EMPLOYMENT (Not Seasonally Adjusted)

	Avg. Weekly Earnings (\$)			Avg. Weekly Hours			Avg. Hourly Earnings (\$)		
	SEPT	AUG	SEPT	SEPT	AUG	SEPT	SEPT	AUG	SEPT
	2011	2011	2010	2011	2011	2010	2011	2011	2010
Total Private	758.16	751.15	721.45	36.0	36.2	36.4	21.06	20.75	19.82
Goods-Producing	1,022.59	1,014.61	990.37	41.3	42.1	41.3	24.76	24.10	23.98
Private Service-Providing	688.54	683.24	651.46	34.6	34.7	35.1	19.90	19.69	18.56
Construction	934.34	923.78	887.76	41.6	41.8	40.5	22.46	22.10	21.92
Manufacturing	1,024.00	1,015.17	1,019.27	40.0	41.1	41.4	25.60	24.70	24.62
Trade, Transportation, and Utilities	709.20	711.25	657.49	36.5	36.7	37.0	19.43	19.38	17.77
Financial Activities	733.32	717.80	695.51	37.8	37.0	36.3	19.40	19.40	19.16
Professional and Business Services	952.71	941.84	965.99	38.2	38.6	40.3	24.94	24.40	23.97
Education and Health Services	637.84	627.00	556.08	33.1	33.0	32.5	19.27	19.00	17.11
Leisure and Hospitality	308.90	315.48	326.01	26.2	26.6	26.7	11.79	11.86	12.21

METROPOLITAN STATISTICAL AREA (MSA) PRIVATE EMPLOYMENT (Not Seasonally Adjusted)

	Avg. Weekly Earnings (\$)			Avg. Weekly Hours			Avg. Hourly Earnings (\$)		
	SEPT	AUG	SEPT	SEPT	AUG	SEPT	SEPT	AUG	SEPT
	2011	2011	2010	2011	2011	2010	2011	2011	2010
Alexandria	863.74	828.95	580.13	38.0	37.8	35.7	22.73	21.93	16.25
Baton Rouge	758.09	760.62	759.96	34.6	34.7	36.0	21.91	21.92	21.11
Houma	909.56	894.45	814.25	41.4	41.2	39.7	21.97	21.71	20.51
Lafayette	773.92	768.85	724.50	37.9	38.5	37.5	20.42	19.97	19.32
Lake Charles	887.60	857.46	809.09	40.0	39.1	38.4	22.19	21.93	21.07
Monroe	510.66	525.85	549.59	31.6	32.4	33.8	16.16	16.23	16.26
New Orleans	872.51	852.87	856.53	35.7	36.2	37.6	24.44	23.56	22.78
Shreveport	633.20	666.60	642.75	35.1	35.8	35.2	18.04	18.62	18.26

AVERAGE HOURS AND EARNINGS FOR PRODUCTION WORKERS IN MANUFACTURING AND SELECTED NONMANUFACTURING INDUSTRIES (Not Seasonally Adjusted)

	Avg. Weekly Earnings (\$)			Avg. Weekly Hours			Avg. Hourly Earnings (\$)		
	SEPT	AUG	SEPT	SEPT	AUG	SEPT	SEPT	AUG	SEPT
	2011	2011	2010	2011	2011	2010	2011	2011	2010
Louisiana									
Mining & Logging	1,167.83	1,159.54	1,001.22	45.3	46.4	41.7	25.78	24.99	24.01
Manufacturing	864.03	886.60	900.58	41.5	41.9	42.4	20.82	21.16	21.24
Durable Goods	904.36	929.19	884.94	42.8	43.4	42.0	21.13	21.41	21.07
Nondurable Goods	820.85	838.57	919.35	40.1	40.2	42.9	20.47	20.86	21.43
New Orleans MSA									
Ship and Boat Building	932.84	914.60	829.78	40.7	39.8	37.7	22.92	22.98	22.01

The 106,600 production workers in all manufacturing earned an average of \$864.03 per week in Sept. 2011. Average weekly hours were 41.5, and average hourly earnings were \$20.82.

LOUISIANA UNEMPLOYMENT INSURANCE by CLAIMANT'S PARISH of RESIDENCE

WEEK ENDING - Sept. 17, 2011

RLMA/PARISH	INITIAL CLAIMS	WEEKS CLAIMED	RLMA/PARISH	INITIAL CLAIMS	WEEKS CLAIMED	RLMA/PARISH	INITIAL CLAIMS	WEEKS CLAIMED
RLMA 1	917	11,505	RLMA 4	403	4,513	RLMA 7	418	5,327
JEFFERSON	389	4,405	ACADIA	34	346	BIENVILLE	9	170
ORLEANS	307	4,115	EVANGELINE	25	192	BOSSIER	73	736
PLAQUEMINES	14	143	IBERIA	41	562	CADDO	194	2,484
ST. BERNARD	0	0	LAFAYETTE	134	1,457	CLAIBORNE	7	145
ST. CHARLES	22	426	ST. LANDRY	77	790	DESOTO	14	210
ST. JAMES	26	331	ST. MARTIN	28	375	LINCOLN	27	432
ST. JOHN	35	605	ST. MARY	39	508	NATCHITOCHEs	33	423
ST. TAMMANY	124	1,480	VERMILION	25	283	RED RIVER	8	72
						SABINE	16	185
						WEBSTER	37	470
RLMA 2	717	9,381	RLMA 5	229	2,311	RLMA 8	257	3,158
ASCENSION	83	870	ALLEN	18	176	CALDWELL	8	88
E. BATON ROUGE	313	4,392	BEAUREGARD	31	402	EAST CARROLL	11	102
EAST FELICIANA	13	191	CALCASIEU	159	1,568	FRANKLIN	20	185
IBERVILLE	42	394	CAMERON	3	6	JACKSON	14	146
LIVINGSTON	96	1,001	JEFF. DAVIS	18	159	MADISON	7	112
POINTE COUPEE	16	260				MOREHOUSE	27	393
ST. HELENA	6	90	RLMA 6	236	2,800	OUACHITA	128	1,539
TANGIPAHOA	97	1,459	AVOYELLES	25	331	RICHLAND	20	215
WASHINGTON	29	386	CATAHOULA	9	86	TENSAS	0	75
W. BATON ROUGE	19	248	CONCORDIA	10	166	UNION	18	183
WEST FELICIANA	3	90	GRANT	5	144	WEST CARROLL	4	120
			LASALLE	3	78			
RLMA 3	115	1,341	RAPIDES	87	1,141			
ASSUMPTION	18	288	VERNON	82	706			
LAFOURCHE	38	464	WINN	15	148			
TERREBONNE	59	589						

RLMA = REGIONAL LABOR MARKET AREA

THE ABOVE FIGURES INCLUDE REGULAR UNEMPLOYMENT INSURANCE (UI), UNEMPLOYMENT CLAIMS for FEDERAL EMPLOYEES (UCFE), and UNEMPLOYMENT CLAIMS for EX-SERVICE MEMBERS (UCX) DATA ONLY.

Labor Market Questions and Answers!

- **When will the Occupational Wage Data 2011 excel files be available on the Louisiana Workforce Commission's website <http://www.laworks.net>?**

Excel files for the Occupational Wage Data 2011 are now available on the LWC website.

http://www.laworks.net/LaborMarketInfo/LMI_WageDataMap2009toPresent.asp?Year=2011

Web Navigation to Excel files: Begin on the LWC home page, Select Labor Market Information, Under LMI Products select Occupational Wage Data

Note that all 2011 data in these excel files are the same as the 2011 Occupational Wages data in the LOIS database available since 8-26-2011.

Web Navigation to LOIS database: Begin on the LWC home page, Select Labor Market Information, Select LOIS (Louisiana Occupational Information System)

Use the menu to the left under Historic Data Analysis and scroll over Employment and Wage Data, Occupation Data and select Occupational Wages (OES)

- **How can we find the September 2011 Claimant Characteristics data by Parish on the LWC website?**

http://www.laworks.net/LaborMarketInfo/LMI_UIClaimsReportMenu.asp

Access the link above and copy the link in internet browser. After making a selection close the window before making additional selections. The following characteristics are available for Louisiana and 64 parishes: Total UI Claimants, Sex, Race, Age, Ethnicity, North American Industry Classification System Codes, and Standard Occupational Classification Codes.

Web Navigation: Begin on the LWC home page, Select Labor Market Information, Scroll under the LMI Products section

Select Unemployment Insurance Claims Data

Under UI Monthly Claimant Characteristics by Parish - Select one Month and one Parish for the report

Glossary & Technical Notes

Average Hourly Earnings/Average Weekly Earnings/ Average Weekly Hours (CES/BLS) - average total money earnings, in the survey week (i.e., the week that includes the twelfth of the month), of production workers plus nonsupervisory workers not in production, including overtime, paid vacation and sick leave.

Civilian Labor Force - that portion of the population, age sixteen or older, which is employed or unemployed and actively seeking employment during the reference week of the twelfth of the month.

Employed - the members of the labor force who worked for pay or profit, or had a job from which they were temporarily absent because of illness, vacation, labor dispute, or other reasons not reflecting a shortage of work, or who worked fifteen hours or more as unpaid workers in an enterprise operated by a member of the family.

Unemployed - the members of the labor force who did not work but were seeking work or were awaiting recall from layoffs or the beginning of a new job within thirty days.

Unemployment Rate - the number of unemployed persons expressed as a percentage of the labor force.

Continued Claim - each week claimed subsequent to the filing of the initial claim for a week of unemployment compensation.

Current Employment Statistics (CES) - estimates of nonfarm employment and production workers hours and earnings by industry. They are produced as part of a nationwide program, in cooperation with the Bureau of Labor Statistics (BLS), for the state and each metropolitan statistical area (MSA) from a sample of employing establishments.

Current Population Survey (CPS) - a monthly household survey of the U.S. population conducted for the Bureau of Labor Statistics (BLS) by the Bureau of Census, of 56,000 selected households. Respondents are interviewed to obtain information on the employment status of each household member age 16 and over, during the reference week of the twelfth.

Durable Goods - items with a normal life expectancy of three years or more. Automobiles, furniture, household appliances, and mobile homes are examples.

Extended Layoff Event - Fifty or more initial claims for unemployment insurance benefits from an establishment during a 5-week period, with at least 50 workers separated for more than 30 days.

Initial Claims - a new claim, filed to open a claim for unemployment compensation.

Metropolitan Statistical Area (MSA) - a geographical area comprised of a parish generally containing a central city (or twin cities) of 50,000 inhabitants or more and contiguous parishes that are socially and economically integrated with the central city.

Micropolitan Statistical Area (MC) - a geographical area comprised of a parish containing a central city of at least 10,000 but less than 50,000 inhabitants and contiguous parishes that are socially and economically integrated with the central city.

NAICS (North American Industry Classification System) - an industry classification system that groups establishments into industries based on the activities in which they are primarily engaged.

Nonfarm Employment - employment by place of work that does not include the self employed, unpaid family workers, domestics, or agriculture workers. All estimates of nonfarm employment in this publication are in cooperation with the U.S. Department of Labor Bureau of Labor Statistics and include all full-time and part-time workers who were employed during the pay period including the twelfth of the month.

Nondurable Goods - items that generally last for only a short period of time (less than three years). Food, beverages, apparel, and gasoline are common examples.

Seasonally Adjusted - monthly data that is adjusted to minimize the changes in any time series which result from normal annual occurrences such as Christmas, summer vacations, and weather patterns.

Separation - The release of persons from an employer as part of a mass layoff event. Such releases involve both persons subject to recall and those who are terminated by the establishment.

Subsector - refers to the three-digit NAICS code, which will fall under the particular sector. Example: If Manufacturing (31-33) is the industry sector, then Food manufacturing (311), Paper manufacturing (322), Chemical manufacturing (325), Transportation equipment manufacturing (336), are some of the subsectors of manufacturing.

Supersector - refers to these five categories: Total Nonfarm, Total Private, Goods-Producing, Service-Providing, and Private Service-Providing.

Summary Industry Sector - a combination of industry sectors. A summary sector may or may not be published. The summary industry sectors are Mining & Logging; Construction; Manufacturing; Trade, Transportation, & Utilities; Information; Financial Activities; Professional & Business Services; Education & Health Services; Leisure & Hospitality; Other Services; and Government.

Industry Sector - 20 industry sectors based on two-digit NAICS code. They are Agriculture, Forestry, Fishing and Hunting (11), Mining (21), Utilities (22), Construction (23), Manufacturing (31-33), Wholesale Trade (42), Retail Trade (44-45), Transportation and Warehousing (48-49), Information (51), Finance and Insurance (52), Real Estate and Rental and Leasing (53), Professional and Technical Services (54), Management of Companies and Enterprises (55), Administrative and Waste Services (56), Educational Services (61), Health Care and Social Assistance (62), Arts, Entertainment, and Recreation (71), Accommodation and Food Services (72), Other Services (81), and Public Administration (92).

Constraints of the monthly civilian labor force and nonfarm employment estimates:

The civilian labor force estimates are derived by a monthly survey of approximately 750 households throughout Louisiana following the Bureau of Labor Statistics (BLS) methodology. The US Census Bureau conducts the survey by calling randomly selected households and providing BLS with survey results. Households are asked for the number of residents who are sixteen and over and whether they were working or actively looking for work during the week of the twelfth of the month. Responses to these questions become part of the formula to determine the number of people employed and the number of individuals unemployed for the state, MSAs, and each parish every month.

The nonfarm employment estimates are derived from responses received from the monthly BLS survey of 2,757 businesses across the state surveyed directly by this agency, and an additional 2,500 businesses that respond directly to BLS with their employment data. Responses capture employment activity during the twelfth of each month. This survey relies on responses from these businesses to produce industry employment levels for the state and all metropolitan statistical areas.

Both data sets are comparable with estimates for the U.S., all 50 states, and 270 metropolitan areas across the U.S.

LABOR MARKET INFORMATION WEB LINKS

Civilian Labor Force - LAUS (Local Area Unemployment Statistics) –

Employment, Unemployment and Unemployment Insurance Rate

LA <http://www.voshost.com/altentry.asp?action=lmiguest>

Left menu: Historical Data Analysis – Employment and Wage Data – Labor Force Data – Labor Force Employment and Unemployment (LAUS)

States <http://data.bls.gov/cgi-bin/dsrv?la>

US <http://data.bls.gov/pdq/querytool.jsp?survey=ln>

Consumer Price Index (US) <http://data.bls.gov/cgi-bin/surveymost?cu>

Download Louisiana Workforce Commission’s Labor Market Information Products

LA http://www.laworks.net/Downloads/Downloads_LMI.asp

Employment and Wage Data – Quarterly Census of Employment and Wages (QCEW)

LA <http://www.voshost.com/altentry.asp?action=lmiguest>

Left menu: Historical Data Analysis – Employment and Wage Data – Industry Data – Quarterly Census of Employment and Wages (QCEW)

States & US <http://data.bls.gov/cgi-bin/dsrv?en>

Mass Layoff Statistics (MLS) <http://stats.bls.gov/mls/>

NAICS (North American Industry Classification System) Codes Look-Up Table

<http://www.census.gov/eos/www/naics>

Nonfarm Employment, Hours and Earnings - CES (Current Employment Statistics)

LA <http://www.voshost.com/altentry.asp?action=lmiguest>

Left menu: Historical Data Analysis – Employment and Wage Data – Industry Data – Current Employment Statistics (CES) – select Show Earnings Data under table

States <http://data.bls.gov/cgi-bin/dsrv?sm>

US <http://data.bls.gov/cgi-bin/dsrv?ce>

Unemployment Insurance Claimants Data (by Occupation) - Unemployment Insurance (UI)

LA <http://www.voshost.com/altentry.asp?action=lmiguest>

Left menu: Historical Data Analysis – Employment and Wage Data – Labor Force Data – Unemployment Insurance Claimants

Unemployment Insurance Claims Data (by Region, Parish, Industry) - UI

LA http://www.laworks.net/LaborMarketInfo/LMI_UIClaimsReportMenu.asp

States & US <http://ows.doleta.gov/unemploy/claims.asp>

Unemployment Rates for all States - LAUS

States <http://www.bls.gov/web/laumstrk.htm>



Office of Occupational Information Services
Research & Statistics Division
Post Office Box 94094
Baton Rouge, LA 70804-9094

Data for: 9/2011



Workforce At A Glance is published monthly by the Louisiana Workforce Commission. The material in this publication is not copyrighted and may be reproduced; however, the LWC would appreciate credit for the material used and a copy of the reprint.

LMI Staff:

Patty Granier, Manager
Ramona Robichaux, Supervisor
Ronald Smith, Layout and Design
Karen Clark, Jonathan Helis

Contributors:

Natalie Foster-Lawrence, Mark Jones, Tara Robinson,
Helen Hilliard, and Karen Clark

Contact Us:

Phone (225) 342-3141; Fax (225) 219-7759
Toll Free (888) 302-7662;
Email OOIS@ldol.state.la.us

Bobby Jindal, Governor
State of Louisiana

Curt Eysink, Executive Director
Louisiana Workforce Commission

Raj Jindal,
Information Technology Director

Visit our website:
www.laworks.net