

# Louisiana Workforce

## at a glance

www.laworks.net

Release Date: Nov. 22, 2011

Data For: Oct. 2011

### In This Issue

- 2 Economic Comparison
- 3 NSA State & Area Employment
- 4 – 7 Data Trends (Graphs)
- 8 – 10 Nonfarm Employment
- 11 – 12 Unemployment Rates & Civilian Labor Force
- 13 Average Hours & Earnings
- 14 UI Claimants & Mass Layoff Statistics
- 15 – 16 Glossary, Data Constraints, Downloads & Web Links
- 17 Labor Market Q & A

### Statewide Overview

Seasonally adjusted nonfarm employment for Louisiana was estimated at 1,933,500 in October 2011. This represents a gain of 5,700 jobs from the previous month, and a 44,200-job increase from October 2010. Leisure and hospitality showed the largest over-the-month gain, adding 3,500 jobs. Education and health services posted the largest over-the-year change, adding 18,100 jobs.

Over the month, six of the 11 industry sectors had increases in employment, four showed declines, and one (other services) remained constant. After leisure and hospitality, the next largest increase was seen in financial activities which grew by 1,900 jobs. The government sector added 1,700 jobs from September, while manufacturing rose by 1,200. Education and health services showed an increase of 700, while mining and logging added 500 jobs from last month. The largest over-the-month decline was seen in construction, which lost 2,000 jobs. Professional and business services declined by 1,000. Losses of 400 jobs were seen in the trade, transportation, and utilities sector as well as the information sector.

Over the year, nine of the 11 sectors added jobs. After education and health services, the largest over-the-year gain occurred in manufacturing, which added 7,700 jobs. Leisure and hospitality grew by 5,800 jobs compared to last October, while the financial activities sector added 4,600 jobs. Trade, transportation, and utilities added 3,400 jobs over the year. Mining and logging added 2,800 jobs, while construction rose by 2,100. Professional and business services increased by 900 jobs, while the information sector added 800. Over-the-year declines were seen in the other services sector and the government sector, losing 1,500 and 500 jobs, respectively.

The October 2011 preliminary seasonally adjusted unemployment rate for Louisiana was 7.0 percent, an increase from the September revised rate of 6.9 percent. The national unemployment rate for October was 9.0 percent, a decrease from the September rate of 9.1 percent. Total unemployment in the state for October was 142,383. The state civilian labor force increased to 2,042,983 with an increase in total employment to 1,900,600. 2,042,983 with an increase in total employment to 1,900,600.

### Economic Indicators

Seasonally Adjusted	PRELIMINARY OCTOBER 2011	
	United States	Louisiana
<b>Civilian Labor Force</b>		
Labor Force	154,198,000	2,042,983
Employed	140,302,000	1,900,600
Unemployed	13,897,000	142,383
Unemployment Rate	9.0	7.0
<b>Nonfarm Wage and Salary Employment</b>	<b>OCT 2011</b>	<b>OCT 2011</b>
	<b>United States</b>	<b>Louisiana</b>
Total Nonfarm	131,516,000	1,933,500
Mining and Logging	810,000	55,300
Construction	5,525,000	124,400
Manufacturing	11,759,000	145,300
Trade, Transportation, and Utilities	25,003,000	369,600
Information	2,656,000	28,600
Financial Activities	7,611,000	97,000
Professional and Business Services	17,321,000	194,500
Education and Health Services	20,122,000	291,300
Leisure and Hospitality	13,275,000	201,800
Other Services	5,455,000	65,100
Government	21,979,000	360,600
<b>All Employees Average Hours &amp; Earnings</b>		
( Not Seasonally Adjusted )		
<b>Construction</b>	<b>OCT 2011</b>	<b>OCT 2011</b>
	<b>United States</b>	<b>Louisiana</b>
Average Weekly Earnings	\$ 998.03	\$ 956.34
Average Weekly Hours	38.8	42.0
Average Hourly Wages	\$ 25.46	\$ 22.77
<b>Manufacturing</b>		
Average Weekly Earnings	\$ 955.80	\$ 1,067.50
Average Weekly Hours	40.8	42.7
Average Hourly Wages	\$ 23.60	\$ 25.00
<b>Louisiana Unemployment Insurance Activities</b>		
<b>Claims</b>	<b>OCT 2011</b>	
Initial New & Renewals	13,515	
Continued Weekly Intrastate Only	180,549	
<b>Insured Unemployment Rate</b>	2.5	
<b>Benefits</b>		
Number of First Payment	7,504	
Benefits Paid (000's)	\$ 29,940	
Weeks Compensated	155,241	
Average Wkly. Benefit Amount	\$ 194.84	
Average Duration of Claim (weeks)	20.7	
<b>Exhaustions</b>	4,389	
<b>United States Consumer Price Index</b>		
	<b>OCT 2011</b>	
<b>All Urban Consumers</b>	226.4	



The civilian labor force and nonfarm **estimates** are prepared according to Bureau of Labor Statistics (BLS) methodology and are comparable with the U.S. and other states' data. For more information, go to page 15.

## Economic Comparison

Seasonally Adjusted	PRELIMINARY OCTOBER 2011		REVISED SEPTEMBER 2011		REVISED OCTOBER 2010	
	United States	Louisiana	United States	Louisiana	United States	Louisiana
<b>Civilian Labor Force</b>						
Labor Force	154,198,000	2,042,983	154,017,000	2,038,387	153,960,000	2,088,218
Employed	140,302,000	1,900,600	140,025,000	1,897,283	139,084,000	1,927,213
Unemployed	13,897,000	142,383	13,992,000	141,104	14,876,000	161,005
Unemployment Rate	9.0	7.0	9.1	6.9	9.7	7.7
<b>Nonfarm Wage and Salary Employment</b>	<b>OCT 2011</b>	<b>OCT 2011</b>	<b>SEPT 2011</b>	<b>SEPT 2011</b>	<b>OCT 2010</b>	<b>OCT 2010</b>
	<b>United States</b>	<b>Louisiana</b>	<b>United States</b>	<b>Louisiana</b>	<b>United States</b>	<b>Louisiana</b>
Total Nonfarm	131,516,000	1,933,500	131,436,000	1,927,800	130,015,000	1,889,300
Mining and Logging	810,000	55,300	805,000	54,800	734,000	52,500
Construction	5,525,000	124,400	5,545,000	126,400	5,512,000	122,300
Manufacturing	11,759,000	145,300	11,754,000	144,100	11,539,000	137,600
Trade, Transportation, and Utilities	25,003,000	369,600	24,968,000	370,000	24,670,000	366,200
Information	2,656,000	28,600	2,661,000	29,000	2,697,000	27,800
Financial Activities	7,611,000	97,000	7,607,000	95,100	7,617,000	92,400
Professional and Business Services	17,321,000	194,500	17,289,000	195,500	16,759,000	193,600
Education and Health Services	20,122,000	291,300	20,094,000	290,600	19,695,000	273,200
Leisure and Hospitality	13,275,000	201,800	13,253,000	198,300	13,072,000	196,000
Other Services	5,455,000	65,100	5,457,000	65,100	5,418,000	66,600
Government	21,979,000	360,600	22,003,000	358,900	22,302,000	361,100

### All Employees Average Hours & Earnings

Construction	United States ( Not Seasonally Adjusted)			Louisiana ( Not Seasonally Adjusted)		
	OCT 2011	SEPT 2011	OCT 2010	OCT 2011	SEPT 2011	OCT 2010
Average Weekly Earnings	\$ 998.03	\$ 981.84	\$ 977.56	\$ 956.34	\$ 934.75	\$ 885.60
Average Weekly Hours	38.8	39.0	38.8	42.0	41.6	41.0
Average Hourly Wages	\$ 25.46	\$ 25.24	\$ 25.13	\$ 22.77	\$ 22.47	\$ 21.60
<b>Manufacturing</b>						
Average Weekly Earnings	\$ 955.80	\$ 951.97	\$ 943.65	\$ 1,067.50	\$ 1,027.51	\$ 988.84
Average Weekly Hours	40.8	40.5	40.6	42.7	40.2	41.9
Average Hourly Wages	\$ 23.60	\$ 23.74	\$ 23.30	\$ 25.00	\$ 25.56	\$ 23.60

### Louisiana Unemployment Insurance Activities

Claims	OCT 2011	SEPT 2011	OCT 2010	% Change From	
				SEPT 2011	OCT 2010
Initial New & Renewals	13,515	13,221	14,023	2.2	-3.6
Continued Weekly Intrastate Only	180,549	156,688	177,684	15.2	1.6
<b>Insured Unemployment Rate*</b>	2.5	2.6	3.0	-3.8	-15.5
<b>Benefits</b>					
Number of First Payment	7,504	7,864	6,808	-4.6	10.2
Benefits Paid (000's)	\$ 29,940	\$ 27,133	\$ 26,625	10.3	12.5
Weeks Compensated	155,241	177,325	139,253	-12.5	11.5
Average Wkly. Benefit Amount	\$ 194.84	\$ 194.98	\$ 193.25	-0.1	0.8
Average Duration of Claim (w eeks)	20.7	17.9	20.5	15.9	1.1
<b>Exhaustions</b>	4,389	3,089	4,664	42.1	-5.9

\* Insured unemployment rate is for the week including the 12th of the month.

### United States Consumer Price Index

	OCT 2011	% Change From:		SEPT 2011	% Change From:	
	Index	Prior Month	Prior Year	Index	Prior Month	Prior Year
<b>All Urban Consumers</b>	226.4	-0.2	3.5	226.9	0.2	3.9

# Not Seasonally Adjusted State and Area Employment

Not seasonally adjusted nonfarm employment for Louisiana was estimated at 1,939,900 for October 2011. Over the month, employment rose by 15,000 jobs from September, while over the year employment gained 44,100 jobs. Goods-producing employment gained 1,800 jobs over the month, while the service-providing employment added 13,200 jobs when compared to September. Over the year, goods-producing industries gained 12,800 jobs while the service-providing sector gained 31,300.

Total nonfarm employment in October for the Alexandria MSA was 65,100, a decrease of 100 jobs from September, but a gain of 800 from a year ago. The goods-producing sector showed no change over the month, but added 200 jobs over the year. Service-providing employment decreased by 100 jobs from September but gained 600 jobs from October 2010.

Total nonfarm employment for the Baton Rouge MSA was estimated at 363,900 for October 2011. Over the month, the MSA showed an increase of 600 jobs, while over the year nonfarm employment declined by 1,100 jobs. Goods-producing employment showed a loss of 1,400 jobs from last month and a small decrease of 100 jobs from last year. The service-providing sector added 2,000 jobs from September but lost 1,000 jobs over the year.

The Houma MSA nonfarm employment was estimated at 96,800 for October 2011. This shows a gain from September of 400 jobs and a gain from last October of 2,700. Goods-producing added 100 over the month, while adding 700 jobs from last year. Service-providing rose by 300 jobs from last month and picked up 2,000 jobs over the year.

Total nonfarm employment for the Lafayette MSA was estimated at 154,200 for October 2011. This represents a gain from September of 2,300 jobs and an increase of 6,000 jobs from last year. Over the month, goods-producing employment rose by 700, while the service-providing sector added 1,600 jobs. Over the year, the goods-producing sector gained 2,300 jobs, while the service-providing sector added 3,700 jobs.

Total nonfarm employment for the Lake Charles MSA was 90,900 for October 2011. This represents no change from September, but an increase of 1,900 jobs over the year. Over the month, the goods-producing sector added 100 jobs, while the service-providing sector lost 100 jobs. The goods-producing sector added 400 jobs from last October, while the service-providing sector increased by 1,500 jobs over the year.

Total nonfarm employment for the Monroe MSA was estimated at 76,300 for October 2011. This shows a gain of 1,000 jobs from September, and an increase of 400 jobs over the year. Goods-producing employment showed no change from September, while adding 200 jobs from October 2010. The service-providing sector added 1,000 jobs from September and 200 jobs over the year.

Total nonfarm employment for the New Orleans MSA was 533,100 for October 2011. Over the month, the MSA added 3,500 jobs, while over the year saw an increase of 10,600 positions. Goods-producing employment showed an increase of 1,100 jobs from September, and a gain of 1,700 from October 2010. The service-providing sector increased by 2,400 jobs from September, and added 8,900 jobs from October 2010.

Total nonfarm employment for the Shreveport MSA was 178,900 for October 2011. This shows a loss of 3,000 jobs from last month but a gain of 800 from October 2010. Goods-producing employment fell by 2,000 from September, and lost 500 jobs from October 2010. Service-providing employment declined by 1,000 jobs over the month, but added 1,300 jobs compared to last year.

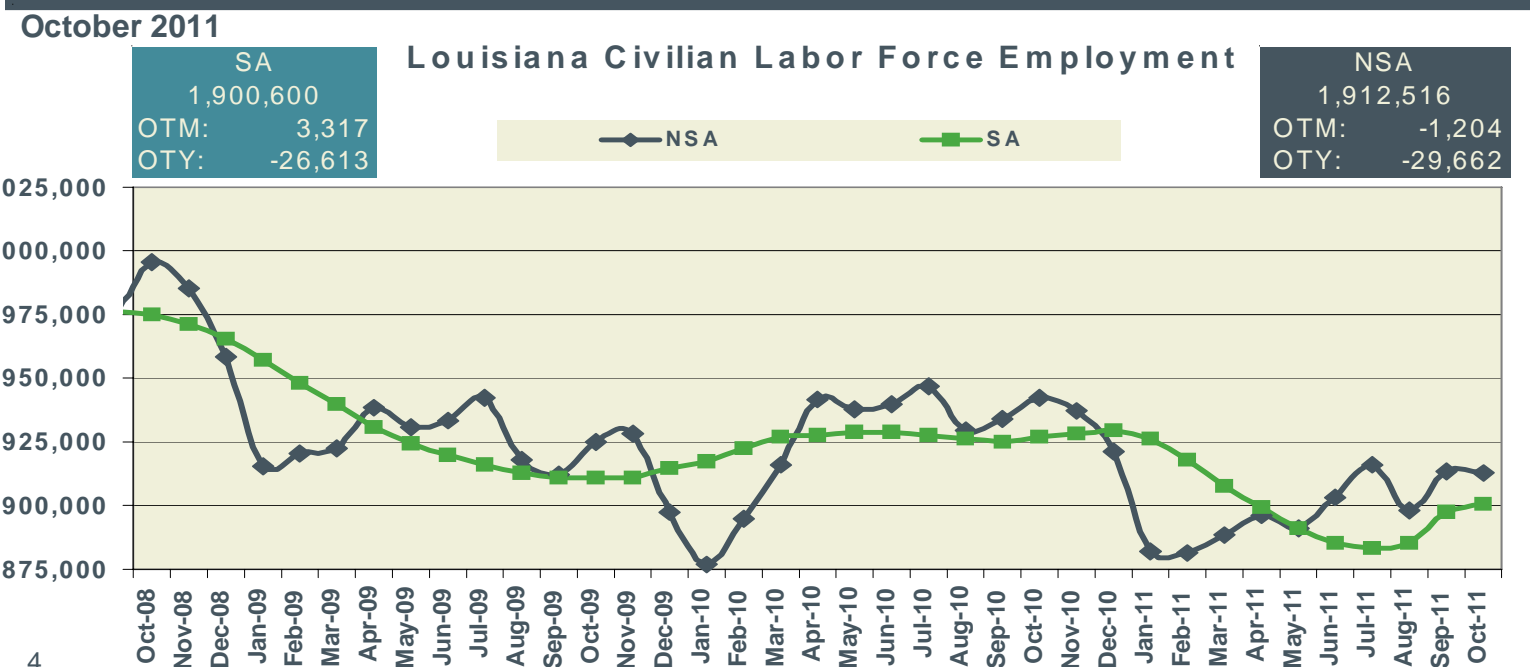
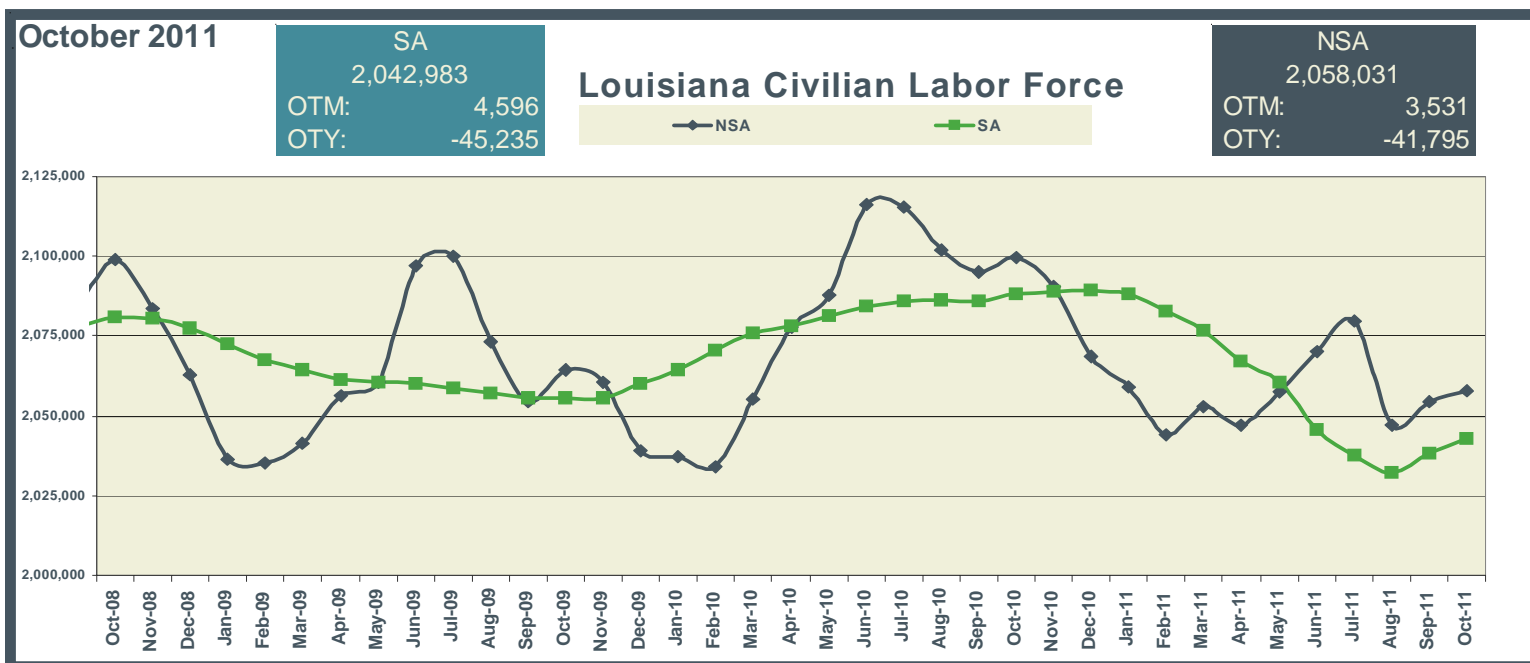
# Keys to Graphs

The following graphs have been designed to reflect the over-the-year trends in the statistical data. Below are the most frequently used abbreviations.

- OTM over-the-month change in employment
- OTY over-the-year change in employment
- SA seasonally adjusted estimates
- NSA not seasonally adjusted estimates

Graphs for statewide reflect seasonally adjusted (SA) estimates compared to not seasonally adjusted (NSA) data.

Metropolitan Statistical Areas (MSAs) graphs denote nonfarm employment levels compared to a three year red trend line of the estimated employment. The navy lines in the graphs are the over-the-month changes for each year.

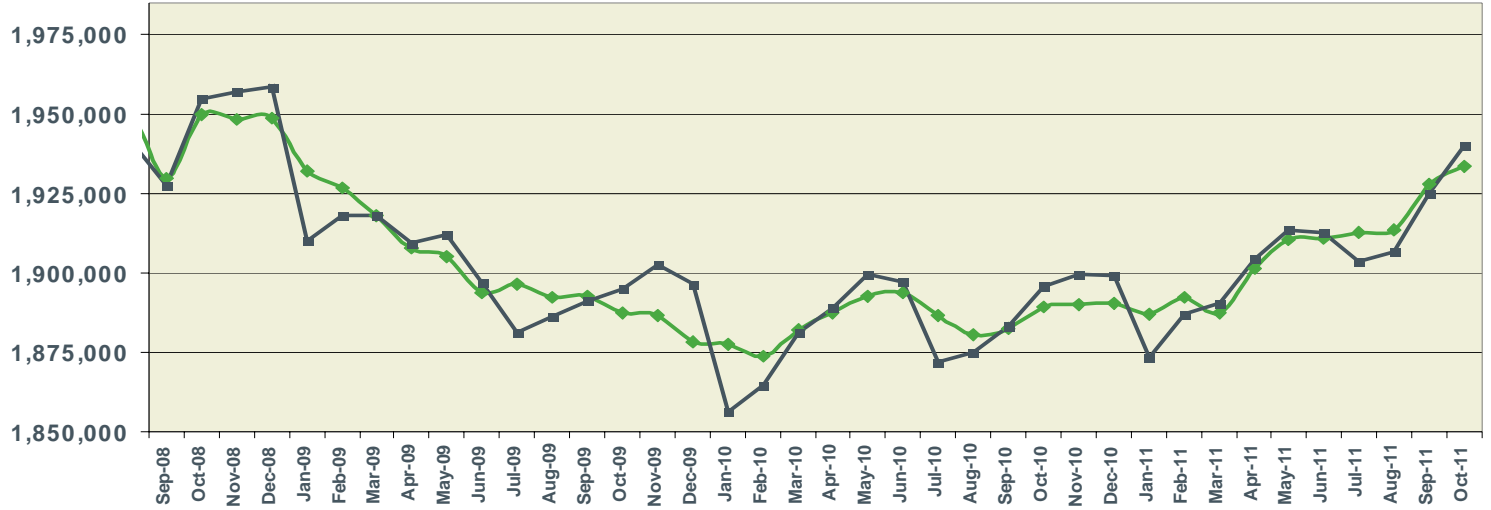


October 2011

SA  
1,933,500  
OTM: 5,700  
OTY: 44,200

Louisiana Nonfarm Employment

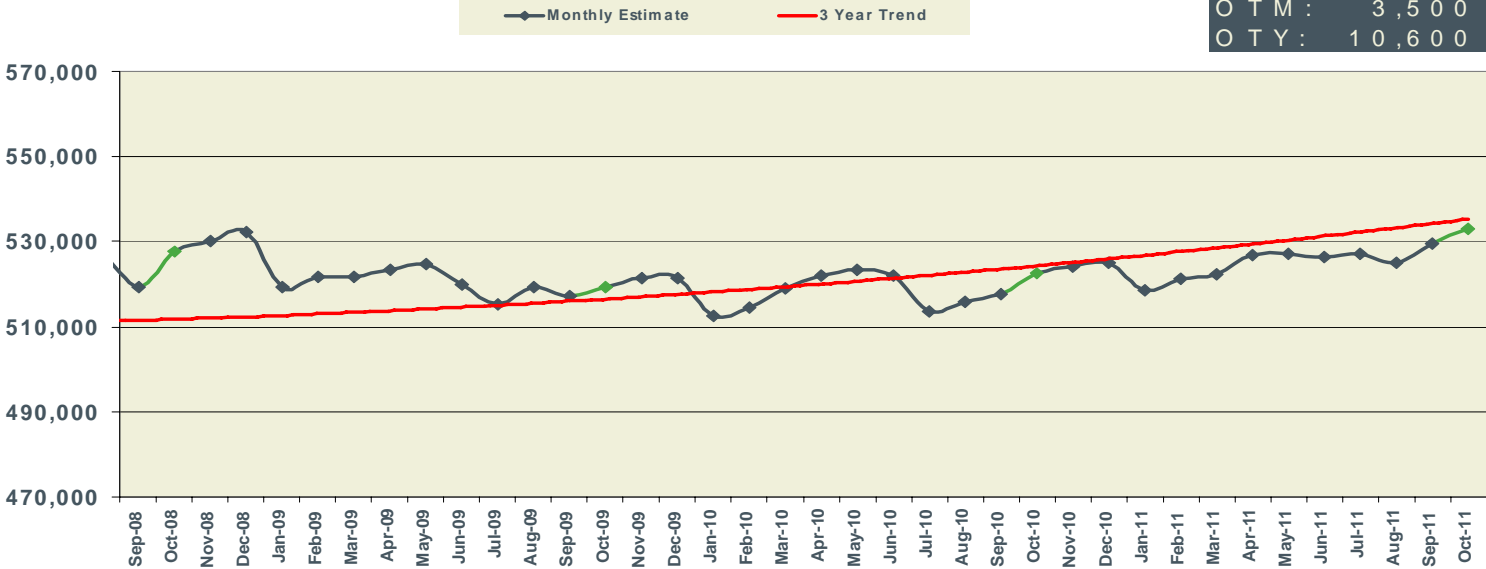
NSA  
1,939,900  
OTM: 15,000  
OTY: 44,100



October 2011

New Orleans MSA Nonfarm Employment

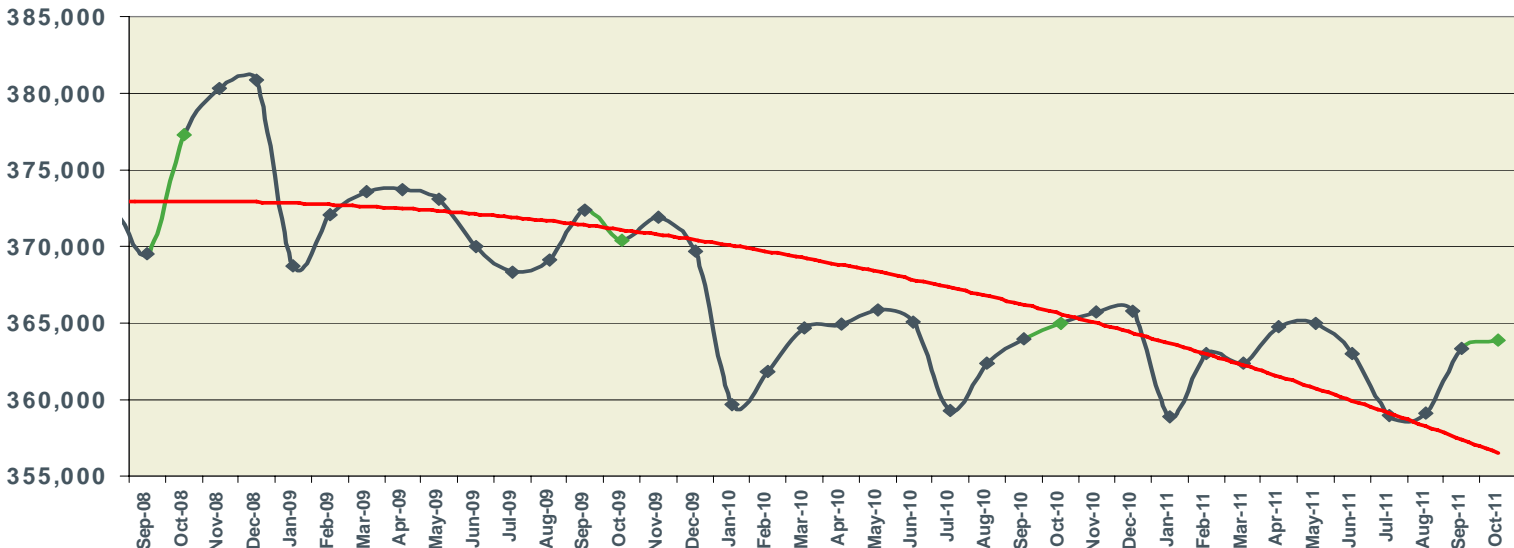
NSA  
533,100  
OTM: 3,500  
OTY: 10,600



October 2011

Baton Rouge MSA Nonfarm Employment

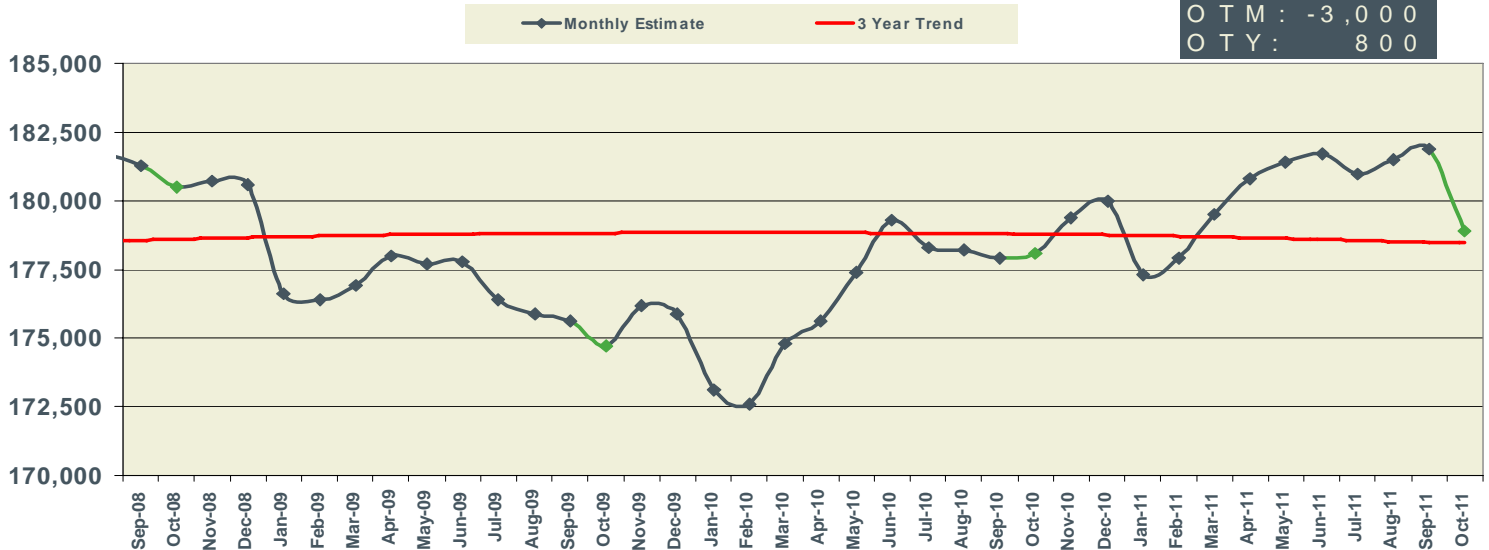
NSA  
363,900  
OTM: 600  
OTY: -1,100



October 2011

### Shreveport MSA Nonfarm Employment

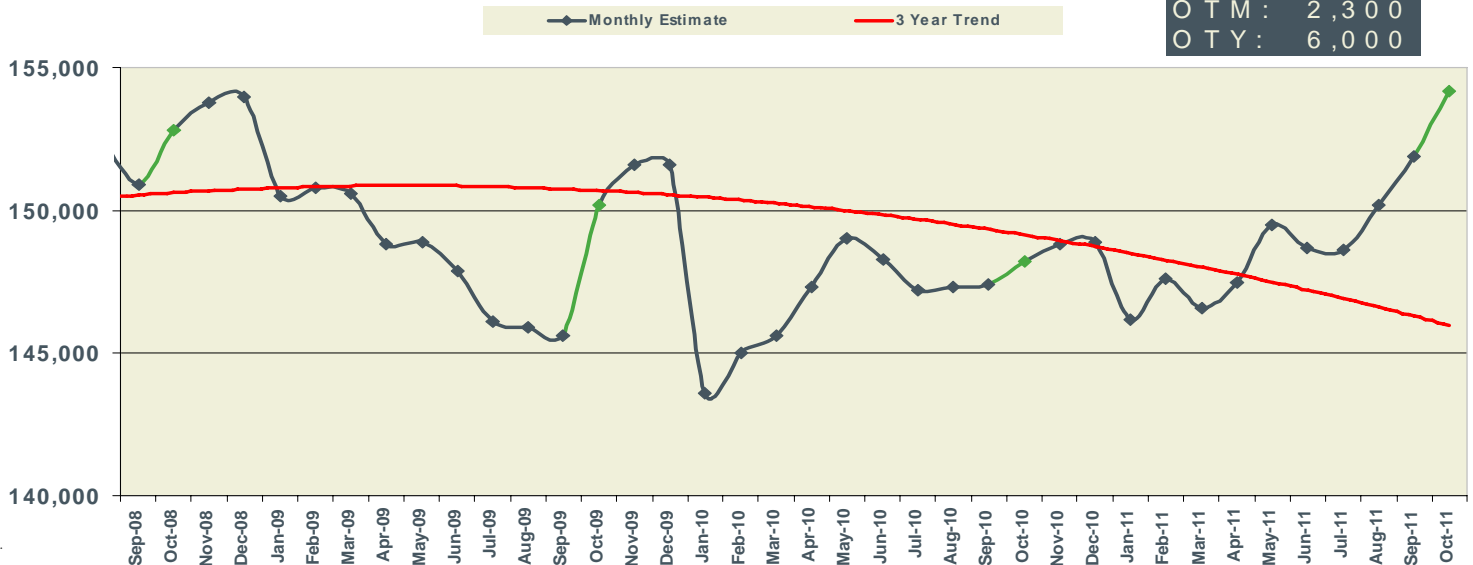
NSA	178,900
OTM	-3,000
OTY	800



October 2011

### Lafayette MSA Nonfarm Employment

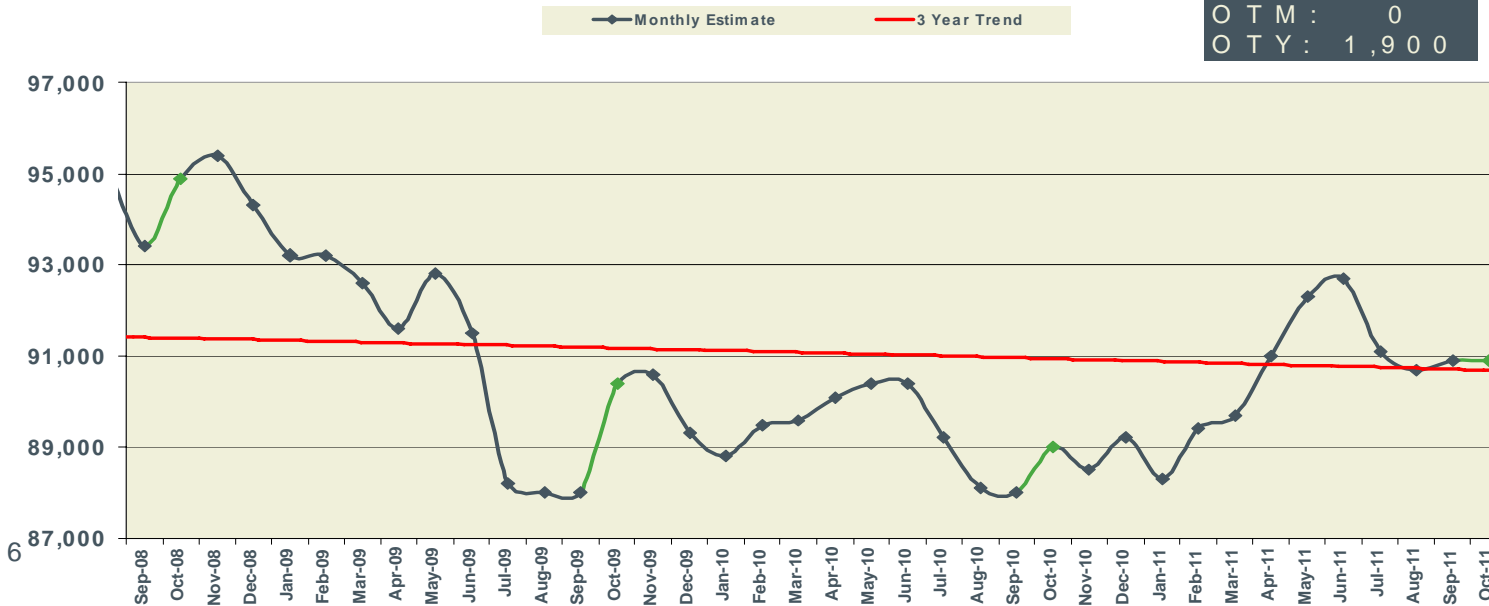
NSA	154,200
OTM	2,300
OTY	6,000



October 2011

### Lake Charles MSA Nonfarm Employment

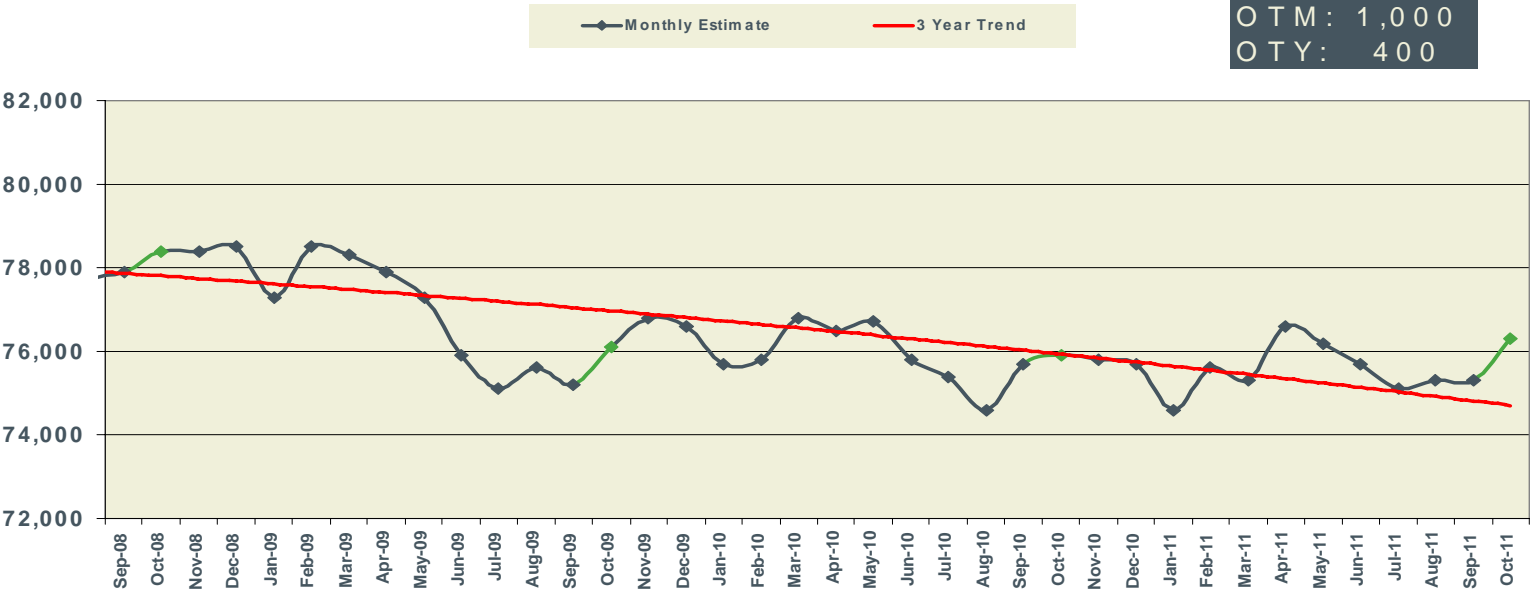
NSA	90,900
OTM	0
OTY	1,900



October 2011

### Monroe MSA Nonfarm Employment

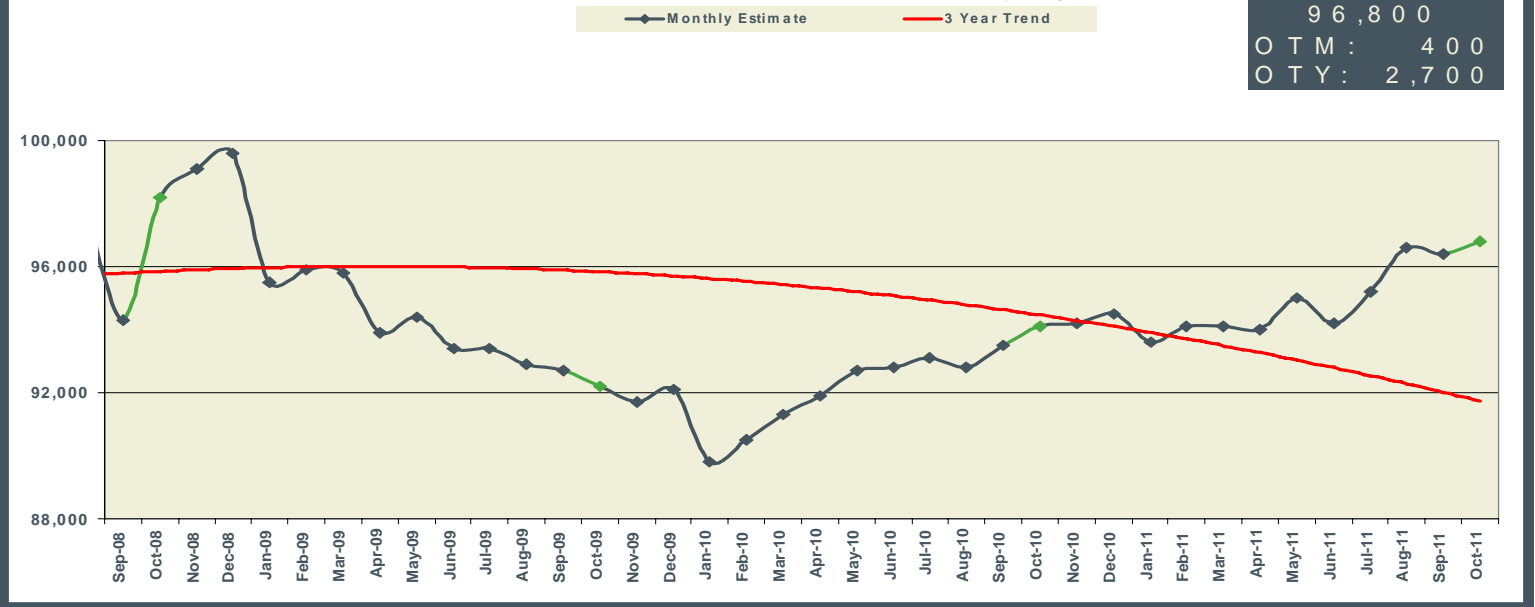
NSA  
76,300  
OTM: 1,000  
OTY: 400



October 2011

### Houma MSA Nonfarm Employment

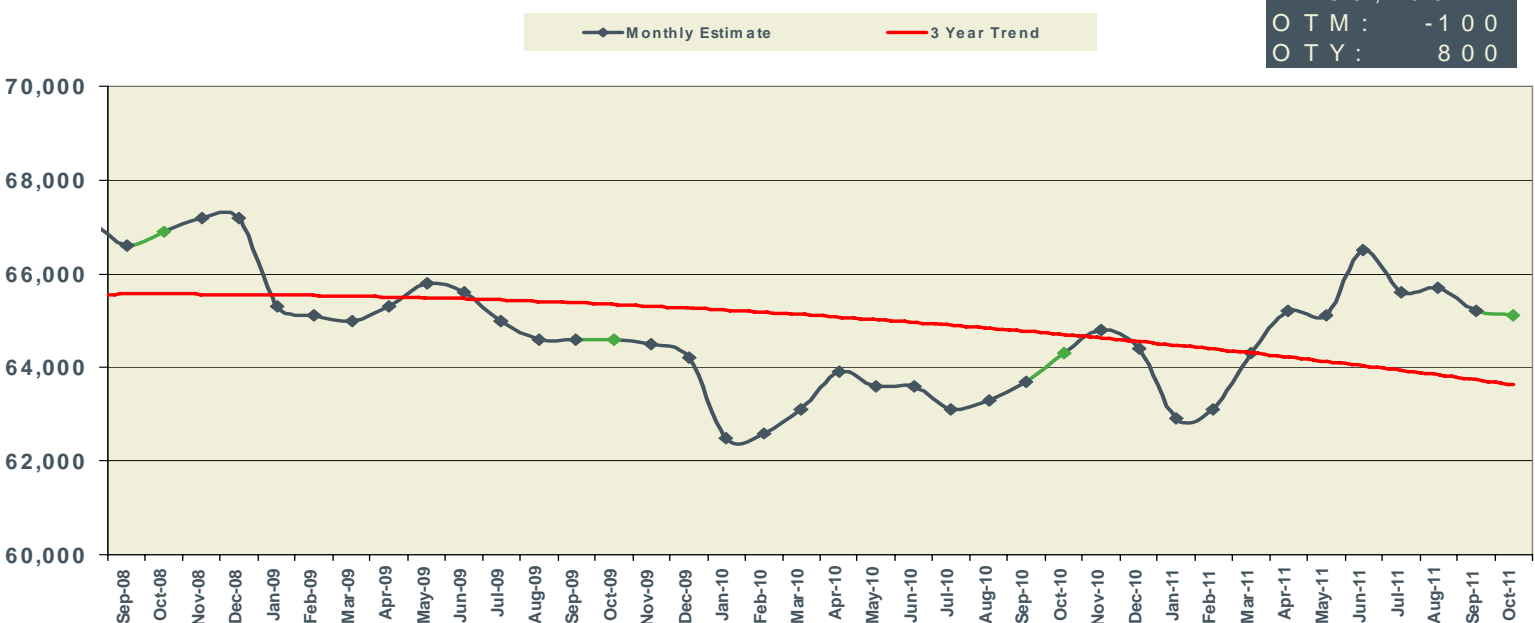
NSA  
96,800  
OTM: 400  
OTY: 2,700



October 2011

### Alexandria MSA Nonfarm Employment

NSA  
65,100  
OTM: -100  
OTY: 800



8 LOUISIANA & MSAs NONFARM EMPLOYMENT									
Not Seasonally Adjusted	LOUISIANA			NEW ORLEANS-METAIRIE-KENNER MSA			BATON ROUGE MSA		
	PREL	REV	REV	PREL	REV	REV	PREL	REV	REV
	OCT 2011	SEPT 2011	OCT 2010	OCT 2011	SEPT 2011	OCT 2010	OCT 2011	SEPT 2011	OCT 2010
Total Nonfarm	1,939,900	1,924,900	1,895,800	533,100	529,600	522,500	363,900	363,300	365,000
Total Private	1,575,300	1,565,900	1,530,600	450,700	448,400	440,600	286,900	287,000	286,300
Goods-Producing	328,000	326,200	315,200	70,800	69,700	69,100	65,200	66,600	65,300
Mining & Logging	55,700	55,000	52,900	7,600	7,500	7,500	2,000	2,000	2,000
Oil & Gas Extraction	8,600	8,700	8,500	2,900	2,900	2,900			
Crude Petroleum & Natural Gas Extraction	8,200	8,200	7,900						
Support Activities for Mining	41,100	40,500	40,100						
Drilling Oil & Gas Wells	9,100	9,100	9,000						
Construction	125,400	126,500	123,200	30,600	30,000	29,700	38,300	39,800	38,500
Construction of Buildings	20,800	20,800	21,800				6,900	7,200	7,000
Residential Building Construction	6,000	6,100	6,000						
Nonresidential Building Construction	14,800	14,700	15,800				6,300	6,500	6,400
Heavy & Civil Engineering Construction	39,400	40,100	40,700	9,000	8,600	8,800	13,000	13,600	13,600
Utility System Construction	20,200	19,900	19,900						
Specialty Trade Contractors	65,200	65,600	60,700	16,900	16,500	15,600	18,400	19,000	17,900
Manufacturing	146,900	144,700	139,100	32,600	32,200	31,900	24,900	24,800	24,800
Durable Goods	72,200	72,300	69,100	15,700	15,500	15,900			
Transportation Equipment Manufacturing	15,900	15,900	17,000	6,700	6,700	7,800			
Ship & Boat Building	11,000	10,900	11,600	5,600	5,500	5,900			
Nondurable Goods	74,700	72,400	70,000	16,900	16,700	16,000	16,900	16,800	17,000
Food Manufacturing	16,700	15,900	17,000						
Paper Manufacturing	7,000	7,100	7,300						
Petroleum & Coal Products Mfg. & Chemical Mfg.									
Petroleum & Coal Products Manufacturing	11,800	11,700	11,500						
Chemical Manufacturing	23,700	23,700	22,700	4,800	4,800	4,400	10,000	9,900	9,400
Basic Chemical Manufacturing	12,200	12,200	12,300				5,600	5,600	5,500
Service-Providing	1,611,900	1,598,700	1,580,600	462,300	459,900	453,400	298,700	296,700	299,700
Private Service-Providing	1,247,300	1,239,700	1,215,400	379,900	378,700	371,500	221,700	220,400	221,000
Trade, Transportation, & Utilities	369,600	368,200	366,200	103,600	103,100	103,500	64,100	63,900	64,200
Wholesale Trade	71,700	71,000	70,500	22,900	22,700	22,200	12,200	12,100	12,300
Merchant Wholesalers, Durable Goods	37,500	37,000	36,600	10,400	10,400	10,500			
Merchant Wholesalers, Nondurable Goods	23,900	24,000	24,700	7,800	7,800	7,900			
Retail Trade	215,600	215,300	217,400	55,700	55,600	57,000	40,100	40,000	40,200
Clothing & Clothing Accessories Stores, General Merchandise									
Motor Vehicle & Parts Dealers	25,400	25,600	25,600						
Building Material & Garden Equipment & Supplies Dealers	18,700	19,200	19,000						
Food & Beverage Stores	34,800	34,600	35,300						
Grocery Stores	30,500	30,400	30,500	8,000	8,000	8,300	5,600	5,600	5,700
Health & Personal Care Stores	15,700	15,400	15,400						
Gasoline Stations	18,700	18,600	18,400						
Clothing and Clothing Accessories Stores	17,500	17,400	18,000						
General Merchandise Stores	51,400	51,300	51,500	12,100	12,100	12,300	9,100	9,100	9,200
Department Stores	16,300	16,200	16,400				2,400	2,400	2,500
Transportation, Warehousing, & Utilities	82,300	81,900	78,300	25,000	24,800	24,300	11,800	11,800	11,700
Transportation and Warehousing	73,200	72,900	69,000						
Truck Transportation	16,300	16,300	16,400						
Support Activities for Transportation	20,600	20,500	19,200						
Information	28,600	28,500	27,800	8,800	8,800	8,700	5,200	5,200	5,000
Telecommunications	10,500	10,600	10,600						
Financial Activities	97,100	95,300	92,500	25,700	25,500	25,800	16,500	16,400	16,700
Finance & Insurance	66,200	65,300	62,200	18,400	18,400	18,100	11,800	11,700	12,000
Credit Intermediation & Related Activities	31,800	31,500	31,900	7,400	7,400	7,500			
Depository Credit Intermediation	22,600	22,500	22,900	5,800	5,800	5,800	4,300	4,300	4,300
Insurance Carriers & Related Activities	26,500	26,400	26,600						
Real Estate & Rental & Leasing	30,900	30,000	30,300						
Professional & Business Services	195,000	195,100	194,100	68,400	69,400	67,900	41,200	41,200	41,600
Professional, Scientific, & Technical Services	79,700	78,700	78,800	29,200	29,600	28,700	18,700	18,700	18,200
Legal Services	19,200	18,900	19,000	8,300	8,400	8,300			
Accounting, Tax Preparation, Bookkeeping & Payroll Services	9,300	9,200	9,500						
Architectural, Engineering, & Related Services	24,300	24,100	23,100						
Management of Companies & Enterprises	24,500	24,300	23,800	8,400	8,400	8,100			
Admin. & Support & Waste Mgmt. & Remediation Serv.	90,800	92,100	91,500	30,800	31,400	31,100	18,100	18,100	18,500
Administrative & Support Services	80,400	81,200	82,200	28,300	28,700	28,500			
Employment Services	29,000	29,200	29,800	10,600	10,800	10,500			
Services to Buildings & Dwellings	19,400	19,700	19,700						
Education & Health Services	293,000	290,500	274,900	81,000	80,300	76,400	49,600	48,700	48,800
Educational Services	39,300	37,500	38,100	22,000	20,900	20,600			
Colleges, Universities, & Professional Schools	19,400	17,900	20,700	12,100	11,500	11,600			
Health Care & Social Assistance	253,700	253,000	236,800	59,000	59,400	55,800	43,300	42,800	42,000
Ambulatory Health Care Services	93,200	92,800	85,800	22,100	22,100	21,100	18,400	18,400	17,500
Offices of Physicians	36,100	35,600	33,200						
Home Health Care Services	22,700	22,500	21,600						
Hospitals	69,400	69,300	65,900	18,800	18,700	18,300	11,800	11,800	11,600
Nursing & Residential Care Facilities	44,000	43,700	41,500						
Nursing Care Facilities	27,000	27,000	25,900						
Social Assistance	47,100	47,200	43,600						
Leisure & Hospitality	199,200	197,200	193,500	73,400	72,800	70,300	32,300	32,200	31,900
Arts, Entertainment, & Recreation	26,400	27,000	27,700	9,700	9,700	10,300			
Amusement, Gambling, & Recreation Industries	21,700	22,400	21,600	6,100	6,200	6,000			
Gambling Industries	9,900	10,100	10,400	2,100	2,100	2,000			
Accommodation & Food Services	172,800	170,200	165,800	63,700	63,100	60,000	27,800	27,300	26,900
Accommodation	29,500	29,100	27,000	13,700	13,400	13,000			
Food Services & Drinking Places	143,300	141,100	138,800	50,000	49,700	47,000	25,300	25,300	24,900
Other Services	64,800	64,900	66,400	19,000	18,800	18,900	12,800	12,800	12,800
Repair & Maintenance	18,900	19,000	19,300						
Automotive Repair & Maintenance	10,500	10,600	10,600						
Personal & Laundry Services	15,300	15,400	15,300						
Government	364,600	359,000	365,200	82,400	81,200	81,900	77,000	76,300	78,700
Federal Government	31,300	31,200	31,600	12,400	12,300	12,400	2,900	2,900	3,100
State Government	111,000	109,300	114,100	18,900	18,500	19,900	40,200	40,900	42,100
Local Government	222,300	218,500	219,500	51,100	50,400	49,600	33,900	32,500	33,500

## LOUISIANA &amp; MSAs NONFARM EMPLOYMENT

9

Not Seasonally Adjusted	SHREVEPORT-BOSSIER CITY MSA			LAFAYETTE MSA			LAKE CHARLES MSA		
	PREL	REV	REV	PREL	REV	REV	PREL	REV	REV
	OCT 2011	SEPT 2011	OCT 2010	OCT 2011	SEPT 2011	OCT 2010	OCT 2011	SEPT 2011	OCT 2010
Total Nonfarm	178,900	181,900	178,100	154,200	151,900	148,200	90,900	90,900	89,000
Total Private	143,300	146,000	142,900	136,400	134,400	130,500	75,400	75,300	73,300
Goods-Producing	25,100	27,100	25,600	33,800	33,100	31,500	18,700	18,600	18,300
Mining & Logging	6,300	6,700	6,400	17,000	16,600	15,400	1,100	1,100	1,100
Oil & Gas Extraction									
Crude Petroleum & Natural Gas Extraction									
Support Activities for Mining				14,400	14,100	13,400			
Drilling Oil & Gas Wells									
Construction	9,000	9,800	9,200	6,100	6,100	6,400	8,000	8,000	8,000
Construction of Buildings									
Residential Building Construction									
Nonresidential Building Construction									
Heavy & Civil Engineering Construction							3,400	3,400	3,500
Utility System Construction									
Specialty Trade Contractors									
Manufacturing	9,800	10,600	10,000	10,700	10,400	9,700	9,600	9,500	9,200
Durable Goods									
Transportation Equipment Manufacturing	1,000	1,100	1,100						
Ship & Boat Building									
Nondurable Goods							7,100	7,100	7,000
Food Manufacturing									
Paper Manufacturing									
Petroleum & Coal Products Mfg. & Chemical Mfg.							6,700	6,600	6,400
Petroleum & Coal Products Manufacturing									
Chemical Manufacturing									
Basic Chemical Manufacturing									
Service-Providing	153,800	154,800	152,500	120,400	118,800	116,700	72,200	72,300	70,700
Private Service-Providing	118,200	118,900	117,300	102,600	101,300	99,000	56,700	56,700	55,000
Trade, Transportation, & Utilities	34,500	34,400	33,300	29,900	29,400	28,900	16,400	16,400	16,400
Wholesale Trade	6,800	6,800	6,600	8,000	7,900	7,600			
Merchant Wholesalers, Durable Goods									
Merchant Wholesalers, Nondurable Goods									
Retail Trade	21,100	21,000	20,600	17,800	17,500	17,500	10,000	9,900	10,000
Clothing & Clothing Accessories Stores, General Merchandise							3,200	3,300	3,300
Motor Vehicle & Parts Dealers									
Building Material & Garden Equipment & Supplies Dealers									
Food & Beverage Stores									
Grocery Stores									
Health & Personal Care Stores									
Gasoline Stations									
Clothing and Clothing Accessories Stores									
General Merchandise Stores	4,600	4,500	4,500	3,700	3,600	3,600			
Department Stores									
Transportation, Warehousing, & Utilities	6,600	6,600	6,100	4,100	4,000	3,800			
Transportation and Warehousing									
Truck Transportation									
Support Activities for Transportation									
Information	4,800	4,800	4,700	2,700	2,700	2,700			
Telecommunications									
Financial Activities	7,200	7,200	7,100	8,600	8,500	8,300			
Finance & Insurance									
Credit Intermediation & Related Activities									
Depository Credit Intermediation									
Insurance Carriers & Related Activities									
Real Estate & Rental & Leasing									
Professional & Business Services	15,400	16,000	16,500	17,800	17,600	17,300	6,900	6,900	6,800
Professional, Scientific, & Technical Services				8,400	8,300	7,900			
Legal Services									
Accounting, Tax Preparation, Bookkeeping & Payroll Services									
Architectural, Engineering, & Related Services									
Management of Companies & Enterprises									
Admin. & Support & Waste Mgmt. & Remediation Serv.	9,800	10,000	10,200						
Administrative & Support Services									
Employment Services									
Services to Buildings & Dwellings									
Education & Health Services	26,800	26,700	26,200	23,400	23,100	22,100			
Educational Services									
Colleges, Universities, & Professional Schools									
Health Care & Social Assistance	25,700	25,700	25,100	21,300	21,000	19,900			
Ambulatory Health Care Services									
Offices of Physicians									
Home Health Care Services									
Hospitals	9,800	9,800	9,600	5,400	5,300	5,300	3,500	3,500	3,500
Nursing & Residential Care Facilities									
Nursing Care Facilities									
Social Assistance									
Leisure & Hospitality	21,500	21,700	21,500	15,300	15,200	14,800	11,700	11,600	11,500
Arts, Entertainment, & Recreation	5,500	5,600	5,800						
Amusement, Gambling, & Recreation Industries	5,300	5,400	5,600						
Gambling Industries	4,200	4,200	4,400						
Accommodation & Food Services	16,000	16,100	15,700	13,500	13,300	13,000	10,300	10,300	10,200
Accommodation									
Food Services & Drinking Places	13,100	13,100	12,900	12,500	12,400	12,000			
Other Services	8,000	8,100	8,000	4,900	4,800	4,900			
Repair & Maintenance									
Automotive Repair & Maintenance									
Personal & Laundry Services									
Government	35,600	35,900	35,200	17,800	17,500	17,700	15,500	15,600	15,700
Federal Government	4,600	4,700	4,700	1,100	1,100	1,100	600	600	600
State Government	11,500	11,800	11,000	5,900	5,600	5,800	4,200	4,200	4,100
Local Government	19,500	19,400	19,500	10,800	10,800	10,800	10,700	10,800	11,000

	MONROE MSA			HOUMA-BAYOU CANE- THIBODAU MSA			ALEXANDRIA MSA		
	PREL	REV	REV	PREL	REV	REV	PREL	REV	REV
	OCT	SEPT	OCT	OCT	SEPT	OCT	OCT	SEPT	OCT
	2011	2011	2010	2011	2011	2010	2011	2011	2010
<i>Not Seasonally Adjusted</i>									
Total Nonfarm	76,300	75,300	75,900	96,800	96,400	94,100	65,100	65,200	64,300
Total Private	61,900	61,300	61,500	83,000	82,800	80,000	50,300	50,400	49,200
Goods-Producing	10,600	10,600	10,400	21,000	20,900	20,300	8,700	8,700	8,500
Mining & Logging				5,900	5,900	5,700			
Oil & Gas Extraction									
Crude Petroleum & Natural Gas Extraction									
Support Activities for Mining				4,800	4,800	4,800			
Drilling Oil & Gas Wells									
Construction				6,000	6,000	5,800			
Construction of Buildings									
Residential Building Construction									
Nonresidential Building Construction									
Heavy & Civil Engineering Construction									
Utility System Construction									
Specialty Trade Contractors									
Manufacturing	7,000	7,000	6,800						
Durable Goods									
Transportation Equipment Manufacturing									
Ship & Boat Building									
Nondurable Goods	5,100	5,200	5,100						
Food Manufacturing									
Paper Manufacturing									
Petroleum & Coal Products Mfg. & Chemical Mfg.									
Petroleum & Coal Products Manufacturing									
Chemical Manufacturing									
Basic Chemical Manufacturing									
Service-Providing	65,700	64,700	65,500	75,800	75,500	73,800	56,400	56,500	55,800
Private Service-Providing	51,300	50,700	51,100	62,000	61,900	59,700	41,600	41,700	40,700
Trade, Transportation, & Utilities	13,800	13,700	13,700	25,000	25,400	23,600	11,600	11,500	11,500
Wholesale Trade									
Merchant Wholesalers, Durable Goods									
Merchant Wholesalers, Nondurable Goods									
Retail Trade	9,300	9,300	9,400	10,600	10,600	10,700	7,700	7,700	7,800
Clothing & Clothing Accessories Stores, General Merchandise	3,300	3,300	3,400						
Motor Vehicle & Parts Dealers									
Building Material & Garden Equipment & Supplies Dealers									
Food & Beverage Stores									
Grocery Stores									
Health & Personal Care Stores									
Gasoline Stations									
Clothing and Clothing Accessories Stores									
General Merchandise Stores									
Department Stores									
Transportation, Warehousing, & Utilities									
Transportation and Warehousing									
Truck Transportation									
Support Activities for Transportation				4,600	4,500	4,400			
Information									
Telecommunications									
Financial Activities									
Finance & Insurance									
Credit Intermediation & Related Activities									
Depository Credit Intermediation									
Insurance Carriers & Related Activities									
Real Estate & Rental & Leasing									
Professional & Business Services	7,300	7,300	7,200						
Professional, Scientific, & Technical Services									
Legal Services									
Accounting, Tax Preparation, Bookkeeping & Payroll Services									
Architectural, Engineering, & Related Services									
Management of Companies & Enterprises									
Admin. & Support & Waste Mgmt. & Remediation Serv.									
Administrative & Support Services				5,300	5,400	5,100			
Employment Services				3,700	3,800	3,600			
Services to Buildings & Dwellings									
Education & Health Services	13,500	13,600	13,300						
Educational Services									
Colleges, Universities, & Professional Schools									
Health Care & Social Assistance									
Ambulatory Health Care Services									
Offices of Physicians									
Home Health Care Services									
Hospitals	3,600	3,700	3,600				4,400	4,400	4,300
Nursing & Residential Care Facilities									
Nursing Care Facilities									
Social Assistance									
Leisure & Hospitality	6,800	6,800	6,800	7,600	7,700	7,500			
Arts, Entertainment, & Recreation									
Amusement, Gambling, & Recreation Industries									
Gambling Industries									
Accommodation & Food Services									
Accommodation									
Food Services & Drinking Places									
Other Services									
Repair & Maintenance									
Automotive Repair & Maintenance									
Personal & Laundry Services									
Government	14,400	14,000	14,400	13,800	13,600	14,100	14,800	14,800	15,100
Federal Government	600	600	600	400	400	400	2,900	3,000	3,000
State Government	4,500	4,300	4,600	3,200	3,100	3,300	4,500	4,500	4,800
Local Government	9,300	9,100	9,200	10,200	10,100	10,400	7,400	7,300	7,300



## CIVILIAN LABOR FORCE (Not Seasonally Adjusted)

Area	Preliminary October 2011			Revised September 2011			Revised October 2010		
	Employed	Unemployed	Rate	Employed	Unemployed	Rate	Employed	Unemployed	Rate
<b>UNITED STATES</b>	<b>140,987,000</b>	<b>13,102,000</b>	<b>8.5</b>	<b>140,502,000</b>	<b>13,520,000</b>	<b>8.8</b>	<b>139,749,000</b>	<b>13,903,000</b>	<b>9.0</b>
<b>LOUISIANA</b>	<b>1,912,516</b>	<b>145,515</b>	<b>7.1</b>	<b>1,913,720</b>	<b>140,780</b>	<b>6.9</b>	<b>1,942,178</b>	<b>157,648</b>	<b>7.5</b>
<b>ALEXANDRIA MSA</b>	<b>63,966</b>	<b>4,693</b>	<b>6.8</b>	<b>64,331</b>	<b>4,513</b>	<b>6.6</b>	<b>65,308</b>	<b>4,989</b>	<b>7.1</b>
Grant	8,005	566	6.6	8,051	573	6.6	8,173	631	7.2
Rapides	55,961	4,127	6.9	56,280	3,940	6.5	57,135	4,358	7.1
<b>BATON ROUGE MSA</b>	<b>344,080</b>	<b>26,416</b>	<b>7.1</b>	<b>344,461</b>	<b>26,087</b>	<b>7.0</b>	<b>353,151</b>	<b>28,946</b>	<b>7.6</b>
Ascension	47,102	3,141	6.3	47,154	3,151	6.3	48,344	3,525	6.8
East Baton Rouge	198,735	15,080	7.1	198,955	14,809	6.9	203,974	16,404	7.4
East Feliciana	7,309	668	8.4	7,318	650	8.2	7,502	754	9.1
Iberville	10,935	1,252	10.3	10,947	1,230	10.1	11,223	1,349	10.7
Livingston	53,801	3,724	6.5	53,861	3,684	6.4	55,220	4,192	7.1
Pointe Coupee	8,607	796	8.5	8,617	802	8.5	8,834	836	8.6
St. Helena	3,667	534	12.7	3,672	576	13.6	3,764	564	13.0
West Baton Rouge	9,658	818	7.8	9,669	793	7.6	9,913	906	8.4
West Feliciana	4,264	403	8.6	4,269	393	8.4	4,376	415	8.7
<b>HOUMA-BAYOU CANE- THIBODAUX MSA</b>	<b>99,294</b>	<b>5,135</b>	<b>4.9</b>	<b>99,537</b>	<b>4,886</b>	<b>4.7</b>	<b>99,638</b>	<b>5,702</b>	<b>5.4</b>
Lafourche	46,886	2,376	4.8	47,000	2,285	4.6	47,048	2,570	5.2
Terrebonne	52,408	2,759	5.0	52,537	2,601	4.7	52,590	3,132	5.6
<b>LAFAYETTE MSA</b>	<b>130,798</b>	<b>7,388</b>	<b>5.3</b>	<b>129,770</b>	<b>7,104</b>	<b>5.2</b>	<b>129,287</b>	<b>8,398</b>	<b>6.1</b>
Lafayette	108,156	5,876	5.2	107,306	5,592	5.0	106,907	6,635	5.8
St. Martin	22,642	1,512	6.3	22,464	1,512	6.3	22,380	1,763	7.3
<b>LAKE CHARLES MSA</b>	<b>88,320</b>	<b>6,070</b>	<b>6.4</b>	<b>88,437</b>	<b>5,780</b>	<b>6.1</b>	<b>88,560</b>	<b>6,632</b>	<b>7.0</b>
Calcasieu	85,417	5,912	6.5	85,530	5,630	6.2	85,649	6,443	7.0
Cameron	2,903	158	5.2	2,907	150	4.9	2,911	189	6.1
<b>MONROE MSA</b>	<b>73,768</b>	<b>5,972</b>	<b>7.5</b>	<b>73,412</b>	<b>5,732</b>	<b>7.2</b>	<b>75,599</b>	<b>6,409</b>	<b>7.8</b>
Ouachita	64,757	5,248	7.5	64,444	5,024	7.2	66,364	5,578	7.8
Union	9,011	724	7.4	8,968	708	7.3	9,235	831	8.3
<b>NEW ORLEANS-METairie- KENNER MSA</b>	<b>506,227</b>	<b>38,816</b>	<b>7.1</b>	<b>504,385</b>	<b>37,372</b>	<b>6.9</b>	<b>508,107</b>	<b>41,553</b>	<b>7.6</b>
Jefferson	200,564	14,229	6.6	199,835	13,626	6.4	201,309	15,200	7.0
New Orleans City/Orleans	136,133	13,011	8.7	135,638	12,684	8.6	136,639	14,107	9.4
Plaquemines	7,559	537	6.6	7,532	525	6.5	7,587	544	6.7
St. Bernard	17,184	1,304	7.1	17,121	1,262	6.9	17,248	1,365	7.3
St. Charles	22,499	1,643	6.8	22,417	1,524	6.4	22,583	1,631	6.7
St. John Baptist	18,950	1,797	8.7	18,881	1,761	8.5	19,020	2,100	9.9
St. Tammany	103,337	6,295	5.7	102,961	5,989	5.5	103,721	6,606	6.0
<b>SHREVEPORT-BOSSIER CITY MSA</b>	<b>171,214</b>	<b>12,201</b>	<b>6.7</b>	<b>175,023</b>	<b>11,703</b>	<b>6.3</b>	<b>172,732</b>	<b>13,199</b>	<b>7.1</b>
Bossier	50,782	3,126	5.8	51,912	2,941	5.4	51,232	3,304	6.1
Caddo	109,933	8,283	7.0	112,379	7,984	6.6	110,908	8,956	7.5
De Soto	10,499	792	7.0	10,732	777	6.8	10,592	939	8.1
<b>NON-MSA PARISHES</b>									
Acadia (Crowley) <sup>1</sup>	23,778	1,550	6.1	23,847	1,477	5.8	24,606	1,764	6.7
Allen	7,985	824	9.4	7,880	776	9.0	8,067	868	9.7
Assumption (Pierre Part) <sup>1</sup>	9,188	1,023	10.0	9,172	1,005	9.9	9,422	1,073	10.2
Avoyelles	14,844	1,265	7.9	14,834	1,245	7.7	15,650	1,384	8.1
Beauregard (DeRidder) <sup>1</sup>	13,132	1,166	8.2	13,112	1,111	7.8	13,712	1,098	7.4
Bienville	5,798	537	8.5	5,807	545	8.6	6,073	572	8.6
Caldwell	4,100	368	8.2	4,098	347	7.8	4,212	410	8.9
Catahoula	3,780	378	9.1	3,745	366	8.9	3,943	431	9.9
Claiborne	6,049	559	8.5	6,087	541	8.2	6,211	608	8.9
Concordia (Natchez, MS-LA) <sup>1</sup>	6,235	753	10.8	6,260	774	11.0	6,606	713	9.7
East Carroll	2,315	387	14.3	2,244	379	14.4	2,600	451	14.8
Evangeline	11,657	1,004	7.9	11,591	957	7.6	11,771	1,090	8.5
Franklin	6,484	777	10.7	6,432	759	10.6	7,072	834	10.5
Iberia (New Iberia) <sup>1</sup>	30,753	2,277	6.9	30,492	2,157	6.6	31,209	2,549	7.6
Jackson (Ruston) <sup>1</sup>	5,864	534	8.3	5,875	474	7.5	6,167	441	6.7
Jefferson Davis (Jennings) <sup>1</sup>	13,240	836	5.9	13,230	795	5.7	13,854	929	6.3
La Salle	6,572	376	5.4	6,580	352	5.1	6,551	429	6.1
Lincoln (Ruston) <sup>1</sup>	17,416	1,584	8.3	17,450	1,523	8.0	18,318	1,685	8.4
Madison (Tallulah) <sup>1</sup>	3,863	436	10.1	3,909	440	10.1	4,150	472	10.2
Morehouse (Bastrop) <sup>1</sup>	9,550	1,348	12.4	9,455	1,354	12.5	9,926	1,548	13.5
Natchitoches (Natchitoches) <sup>1</sup>	15,553	1,353	8.0	15,540	1,310	7.8	16,214	1,431	8.1
Red River	3,458	285	7.6	3,446	268	7.2	3,454	338	8.9
Richland	8,094	819	9.2	8,095	789	8.9	8,498	921	9.8
Sabine	8,829	626	6.6	8,822	580	6.2	9,135	692	7.0
St. James	8,190	1,023	11.1	8,238	1,023	11.0	8,554	1,088	11.3
St. Landry (Opelousas, Eunice) <sup>1</sup>	34,506	2,934	7.8	34,769	2,847	7.6	35,595	3,189	8.2
St. Mary (Morgan City) <sup>1</sup>	20,708	1,884	8.3	20,731	1,826	8.1	21,177	2,149	9.2
Tangipahoa (Hammond) <sup>1</sup>	47,960	4,404	8.4	47,840	4,385	8.4	49,573	4,803	8.8
Tensas	1,607	240	13.0	1,542	218	12.4	1,767	284	13.8
Vermilion (Abbeville) <sup>1</sup>	22,218	1,456	6.2	22,025	1,347	5.8	22,841	1,658	6.8
Vernon (Fort Polk South) <sup>1</sup>	20,065	1,815	8.3	20,196	1,735	7.9	19,759	1,558	7.3
Washington (Bogalusa) <sup>1</sup>	13,523	1,451	9.7	13,422	1,403	9.5	14,148	1,557	9.9
Webster (Mindon) <sup>1</sup>	17,959	1,486	7.6	18,200	1,463	7.4	18,733	1,663	8.2
West Carroll	3,549	562	13.7	3,468	540	13.5	3,818	590	13.4
Winn	6,026	500	7.7	5,933	490	7.6	6,412	548	7.9

<sup>1</sup>In addition to the eight (8) Metropolitan Statistical Areas (MSAs) in Louisiana, there are seventeen (17) Micropolitan Statistical Areas (MCs): Jackson and Lincoln Parishes combine to constitute one MC area. Civilian Labor Force can be derived by adding employed and unemployed. For related information or data, please visit: [www.bls.gov/lau/home.htm](http://www.bls.gov/lau/home.htm).

**LOUISIANA - PRIVATE EMPLOYMENT (Not Seasonally Adjusted)**

	Avg. Weekly Earnings (\$)			Avg. Weekly Hours			Avg. Hourly Earnings (\$)		
	OCT 2011	SEPT 2011	OCT 2010	OCT 2011	SEPT 2011	OCT 2010	OCT 2011	SEPT 2011	OCT 2010
Total Private	782.00	760.99	724.09	36.8	36.1	36.7	21.25	21.08	19.73
Goods-Producing	1,056.08	1,027.94	984.32	43.0	41.6	42.3	24.56	24.71	23.27
Private Service-Providing	710.69	689.58	655.78	35.2	34.6	35.2	20.19	19.93	18.63
Construction	956.34	934.75	885.60	42.0	41.6	41.0	22.77	22.47	21.60
Manufacturing	1,067.50	1,027.51	988.84	42.7	40.2	41.9	25.00	25.56	23.60
Trade, Transportation, and Utilities	737.04	712.60	661.86	37.0	36.6	37.1	19.92	19.47	17.84
Financial Activities	776.92	733.32	720.05	39.1	37.8	36.7	19.87	19.40	19.62
Professional and Business Services	995.01	950.98	998.73	39.5	38.1	41.1	25.19	24.96	24.30
Education and Health Services	648.68	639.87	552.24	33.3	33.0	32.6	19.48	19.39	16.94
Leisure and Hospitality	320.80	311.52	325.58	26.6	26.2	26.6	12.06	11.89	12.24

**METROPOLITAN STATISTICAL AREA (MSA) PRIVATE EMPLOYMENT (Not Seasonally Adjusted)**

	Avg. Weekly Earnings (\$)			Avg. Weekly Hours			Avg. Hourly Earnings (\$)		
	OCT 2011	SEPT 2011	OCT 2010	OCT 2011	SEPT 2011	OCT 2010	OCT 2011	SEPT 2011	OCT 2010
Alexandria	881.63	859.94	601.08	38.1	38.0	35.8	23.14	22.63	16.79
Baton Rouge	776.16	762.12	753.05	35.2	34.8	36.1	22.05	21.90	20.86
Houma	959.67	930.93	832.32	42.9	42.2	40.8	22.37	22.06	20.40
Lafayette	788.60	781.14	711.14	38.3	37.7	37.0	20.59	20.72	19.22
Lake Charles	892.41	875.78	835.76	39.4	39.7	40.2	22.65	22.06	20.79
Monroe	534.95	510.02	583.36	32.9	31.6	35.1	16.26	16.14	16.62
New Orleans	915.34	869.00	846.67	37.3	35.6	37.2	24.54	24.41	22.76
Shreveport	664.51	650.10	677.94	35.9	35.7	35.7	18.51	18.21	18.99

**AVERAGE HOURS AND EARNINGS FOR PRODUCTION WORKERS IN MANUFACTURING AND SELECTED NONMANUFACTURING INDUSTRIES (Not Seasonally Adjusted)**

	Avg. Weekly Earnings (\$)			Avg. Weekly Hours			Avg. Hourly Earnings (\$)		
	OCT 2011	SEPT 2011	OCT 2010	OCT 2011	SEPT 2011	OCT 2010	OCT 2011	SEPT 2011	OCT 2010
Louisiana									
Mining & Logging	1,224.84	1,183.93	976.45	47.2	45.8	41.8	25.95	25.85	23.36
Manufacturing	851.58	867.33	896.73	41.5	41.4	42.6	20.52	20.95	21.05
Durable Goods	928.72	905.58	898.86	44.5	43.0	42.6	20.87	21.06	21.10
Nondurable Goods	772.22	826.95	892.08	38.4	39.7	42.5	20.11	20.83	20.99
New Orleans MSA									
Ship and Boat Building	894.47	932.84	829.78	39.3	40.7	37.7	22.76	22.92	22.01

The 109,410 production workers in all manufacturing earned an average of \$851.58 per week in Oct. 2011. Average weekly hours were 41.5, and average hourly earnings were \$20.52.

LOUISIANA UNEMPLOYMENT INSURANCE by CLAIMANT'S PARISH of RESIDENCE

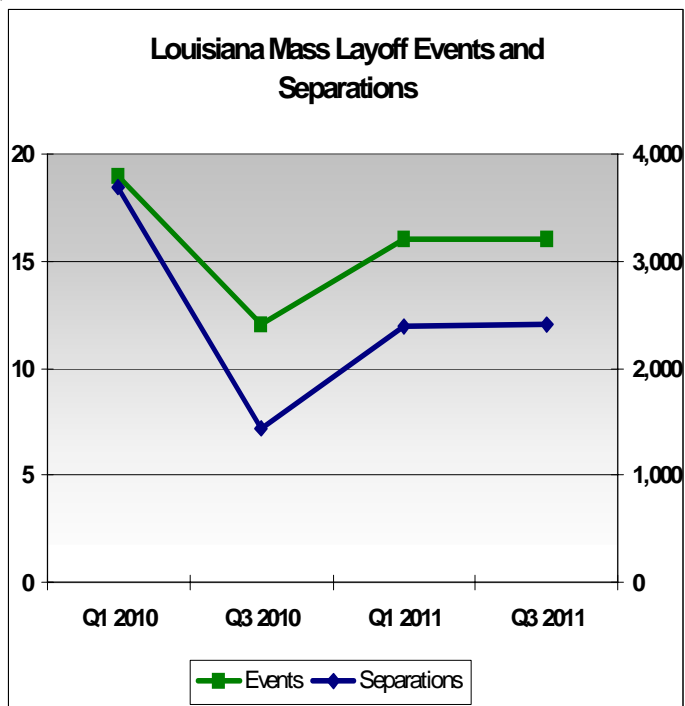
WEEK ENDING - Oct. 15, 2011

RLMA/PARISH	INITIAL CLAIMS	WEEKS CLAIMED	RLMA/PARISH	INITIAL CLAIMS	WEEKS CLAIMED	RLMA/PARISH	INITIAL CLAIMS	WEEKS CLAIMED
<b>RLMA 1</b>	<b>882</b>	<b>10,890</b>	<b>RLMA 4</b>	<b>391</b>	<b>4,369</b>	<b>RLMA 7</b>	<b>394</b>	<b>5,031</b>
JEFFERSON	346	4,221	ACADIA	28	312	BIENVILLE	8	154
ORLEANS	293	3,855	EVANGELINE	21	215	BOSSIER	63	767
PLAQUEMINES	14	122	IBERIA	75	556	CADDO	170	2,386
ST. BERNARD	0	0	LAFAYETTE	110	1,421	CLAIBORNE	8	149
ST. CHARLES	25	421	ST. LANDRY	58	756	DESOTO	16	183
ST. JAMES	35	292	ST. MARTIN	23	363	LINCOLN	45	402
ST. JOHN	47	537	ST. MARY	40	470	NATCHITOCHEs	37	360
ST. TAMMANY	122	1,442	VERMILION	36	276	RED RIVER	8	64
<b>RLMA 2</b>	<b>660</b>	<b>8,553</b>	<b>RLMA 5</b>	<b>220</b>	<b>2,266</b>	WEBSTER	28	445
ASCENSION	70	782	ALLEN	14	165	<b>RLMA 8</b>	<b>266</b>	<b>3,014</b>
E. BATON ROUGE	290	4,026	BEAUREGARD	38	394	CALDWELL	1	88
EAST FELICIANA	13	185	CALCASIEU	150	1,543	EAST CARROLL	10	104
IBERVILLE	30	360	CAMERON	2	5	FRANKLIN	15	198
LIVINGSTON	92	887	JEFF. DAVIS	16	159	JACKSON	11	154
POINTE COUPEE	18	225	<b>RLMA 6</b>	<b>208</b>	<b>2,670</b>	MADISON	6	105
ST. HELENA	3	77	AVOYELLES	35	280	MOREHOUSE	36	360
TANGIPAHOA	105	1,320	CATAHOULA	9	78	OUACHITA	141	1,458
WASHINGTON	19	382	CONCORDIA	13	157	RICHLAND	16	209
W. BATON ROUGE	13	225	GRANT	15	136	TENSAS	5	55
WEST FELICIANA	7	84	LASALLE	6	77	UNION	12	173
<b>RLMA 3</b>	<b>126</b>	<b>1,262</b>	RAPIDES	75	1,092	WEST CARROLL	13	110
ASSUMPTION	32	250	VERNON	43	722			
LAFOURCHE	26	421	WINN	12	128			
TERREBONNE	68	591						

RLMA = REGIONAL LABOR MARKET AREA

THE ABOVE FIGURES INCLUDE REGULAR UNEMPLOYMENT INSURANCE (UI), UNEMPLOYMENT CLAIMS for FEDERAL EMPLOYEES (UCFE), and UNEMPLOYMENT CLAIMS for EX-SERVICE MEMBERS (UCX) DATA ONLY.

### Mass Layoff Statistics



- Third quarter 2011, Louisiana reported 16 mass layoff events which resulted in the separation of 2,405 workers. Construction industry accounted for most of the events with employers reporting reasons for layoff as completion of job projects. Third quarter layoff data are preliminary and are subject to revision.

- Nationally employers reported 1,226 mass layoff events in the third quarter of 2011 affecting 184,493 workers. Both events and separations in the manufacturing sector declined to series' lows during the third quarter of 2011. Fifty percent of private nonfarm employers indicated they anticipated some type of recall, up from 45 percent a year earlier.

- The first quarter of 2010, Louisiana reported 19 mass layoff events resulting in 3,690 separations, while the first quarter of 2011 showed a decrease in both mass layoff events and separations with 16 mass layoff events that resulted in 2,681 separations. Employers nationally initiated 1,564 mass layoff events in the first quarter of 2010 that resulted in the separation of 221,150 workers from their jobs. Nationally employers initiated 1,397 mass layoff events in the first quarter of 2011 that resulted in the separation of 190,895 workers from their jobs. The average size of a layoff (as measured by the number of separations per layoff event) fell to a series low 137 workers during the first quarter of 2011.

- Third quarter 2010, employers nationally reported 1,297 mass layoff events which resulted in the separations of 187,091 workers. Manufacturing accounted for 19 percent of private nonfarm extended layoff events and 18 percent of related separations in the quarter, the lowest third quarter proportions in the program history.

# Glossary & Technical Notes

**Average Hourly Earnings/Average Weekly Earnings/ Average Weekly Hours (CES/BLS)** - average total money earnings, in the survey week (i.e., the week that includes the twelfth of the month), of production workers plus nonsupervisory workers not in production, including overtime, paid vacation and sick leave.

**Civilian Labor Force** - that portion of the population, age sixteen or older, which is employed or unemployed and actively seeking employment during the reference week of the twelfth of the month.

**Employed** - the members of the labor force who worked for pay or profit, or had a job from which they were temporarily absent because of illness, vacation, labor dispute, or other reasons not reflecting a shortage of work, or who worked fifteen hours or more as unpaid workers in an enterprise operated by a member of the family.

**Unemployed** - the members of the labor force who did not work but were seeking work or were awaiting recall from layoffs or the beginning of a new job within thirty days.

**Unemployment Rate** - the number of unemployed persons expressed as a percentage of the labor force.

**Continued Claim** - each week claimed subsequent to the filing of the initial claim for a week of unemployment compensation.

**Current Employment Statistics (CES)** - estimates of nonfarm employment and production workers hours and earnings by industry. They are produced as part of a nationwide program, in cooperation with the Bureau of Labor Statistics (BLS), for the state and each metropolitan statistical area (MSA) from a sample of employing establishments.

**Current Population Survey (CPS)** - a monthly household survey of the U.S. population conducted for the Bureau of Labor Statistics (BLS) by the Bureau of Census, of 56,000 selected households. Respondents are interviewed to obtain information on the employment status of each household member age 16 and over, during the reference week of the twelfth.

**Durable Goods** - items with a normal life expectancy of three years or more. Automobiles, furniture, household appliances, and mobile homes are examples.

**Extended Layoff Event** - Fifty or more initial claims for unemployment insurance benefits from an establishment during a 5-week period, with at least 50 workers separated for more than 30 days.

**Initial Claims** - a new claim, filed to open a claim for unemployment compensation.

**Metropolitan Statistical Area (MSA)** - a geographical area comprised of a parish generally containing a central city (or twin cities) of 50,000 inhabitants or more and contiguous parishes that are socially and economically integrated with the central city.

**Micropolitan Statistical Area (MC)** - a geographical area comprised of a parish containing a central city of at least 10,000 but less than 50,000 inhabitants and contiguous parishes that are socially and economically integrated with the central city.

**NAICS (North American Industry Classification System)** - an industry classification system that groups establishments into industries based on the activities in which they are primarily engaged.

**Nonfarm Employment** - employment by place of work that does not include the self employed, unpaid family workers, domestics, or agriculture workers. All estimates of nonfarm employment in this publication are in cooperation with the U.S. Department of Labor Bureau of Labor Statistics and include all full-time and part-time workers who were employed during the pay period including the twelfth of the month.

**Nondurable Goods** - items that generally last for only a short period of time (less than three years). Food, beverages, apparel, and gasoline are common examples.

**Seasonally Adjusted** - monthly data that is adjusted to minimize the changes in any time series which result from normal annual occurrences such as Christmas, summer vacations, and weather patterns.

**Separation** - The release of persons from an employer as part of a mass layoff event. Such releases involve both persons subject to recall and those who are terminated by the establishment.

**Subsector** - refers to the three-digit NAICS code, which will fall under the particular sector. Example: If Manufacturing (31-33) is the industry sector, then Food manufacturing (311), Paper manufacturing (322), Chemical manufacturing (325), Transportation equipment manufacturing (336), are some of the subsectors of manufacturing.

**Supersector** - refers to these five categories: Total Nonfarm, Total Private, Goods-Producing, Service-Providing, and Private Service-Providing.

**Summary Industry Sector** - a combination of industry sectors. A summary sector may or may not be published. The summary industry sectors are Mining & Logging; Construction; Manufacturing; Trade, Transportation, & Utilities; Information; Financial Activities; Professional & Business Services; Education & Health Services; Leisure & Hospitality; Other Services; and Government.

**Industry Sector** - 20 industry sectors based on two-digit NAICS code. They are Agriculture, Forestry, Fishing and Hunting (11), Mining (21), Utilities (22), Construction (23), Manufacturing (31-33), Wholesale Trade (42), Retail Trade (44-45), Transportation and Warehousing (48-49), Information (51), Finance and Insurance (52), Real Estate and Rental and Leasing (53), Professional and Technical Services (54), Management of Companies and Enterprises (55), Administrative and Waste Services (56), Educational Services (61), Health Care and Social Assistance (62), Arts, Entertainment, and Recreation (71), Accommodation and Food Services (72), Other Services (81), and Public Administration (92).

---

## Constraints of the monthly civilian labor force and nonfarm employment estimates:

The civilian labor force estimates are derived by a monthly survey of approximately 750 households throughout Louisiana following the Bureau of Labor Statistics (BLS) methodology. The US Census Bureau conducts the survey by calling randomly selected households and providing BLS with survey results. Households are asked for the number of residents who are sixteen and over and whether they were working or actively looking for work during the week of the twelfth of the month. Responses to these questions become part of the formula to determine the number of people employed and the number of individuals unemployed for the state, MSAs, and each parish every month.

The nonfarm employment estimates are derived from responses received from the monthly BLS survey of 2,757 businesses across the state surveyed directly by this agency, and an additional 2,500 businesses that respond directly to BLS with their employment data. Responses capture employment activity during the twelfth of each month. This survey relies on responses from these businesses to produce industry employment levels for the state and all metropolitan statistical areas.

Both data sets are comparable with estimates for the U.S., all 50 states, and 270 metropolitan areas across the U.S.

## **LABOR MARKET INFORMATION WEB LINKS**

### **Civilian Labor Force - LAUS (Local Area Unemployment Statistics) –**

#### **Employment, Unemployment and Unemployment Insurance Rate**

LA <http://www.voshost.com/altentry.asp?action=lmiguest>

Left menu: Historical Data Analysis – Employment and Wage Data – Labor Force Data – Labor Force Employment and Unemployment (LAUS)

States <http://data.bls.gov/cgi-bin/dsrv?la>

US <http://data.bls.gov/pdq/querytool.jsp?survey=ln>

#### **Consumer Price Index (US) <http://data.bls.gov/cgi-bin/surveymost?cu>**

#### **Download Louisiana Workforce Commission’s Labor Market Information Products**

LA [http://www.laworks.net/Downloads/Downloads\\_LMI.asp](http://www.laworks.net/Downloads/Downloads_LMI.asp)

#### **Employment and Wage Data – Quarterly Census of Employment and Wages (QCEW)**

LA <http://www.voshost.com/altentry.asp?action=lmiguest>

Left menu: Historical Data Analysis – Employment and Wage Data – Industry Data – Quarterly Census of Employment and Wages (QCEW)

States & US <http://data.bls.gov/cgi-bin/dsrv?en>

#### **Mass Layoff Statistics (MLS) <http://stats.bls.gov/mls/>**

#### **NAICS (North American Industry Classification System) Codes Look-Up Table**

<http://www.census.gov/eos/www/naics>

#### **Nonfarm Employment, Hours and Earnings - CES (Current Employment Statistics)**

LA <http://www.voshost.com/altentry.asp?action=lmiguest>

Left menu: Historical Data Analysis – Employment and Wage Data – Industry Data – Current Employment Statistics (CES) – select Show Earnings Data under table

States <http://data.bls.gov/cgi-bin/dsrv?sm>

US <http://data.bls.gov/cgi-bin/dsrv?ce>

#### **Unemployment Insurance Claimants Data (by Occupation) - Unemployment Insurance (UI)**

LA <http://www.voshost.com/altentry.asp?action=lmiguest>

Left menu: Historical Data Analysis – Employment and Wage Data – Labor Force Data – Unemployment Insurance Claimants

#### **Unemployment Insurance Claims Data (by Region, Parish, Industry) - UI**

LA [http://www.laworks.net/LaborMarketInfo/LMI\\_UIClaimsReportMenu.asp](http://www.laworks.net/LaborMarketInfo/LMI_UIClaimsReportMenu.asp)

States & US <http://ows.doleta.gov/unemploy/claims.asp>

#### **Unemployment Rates for all States - LAUS**

States <http://www.bls.gov/web/laumstrk.htm>

## Labor Market Questions and Answers!

•**When will the 2010 Annual Employment and Wages data be available on the Louisiana Workforce Commissions' website <http://www.laworks.net>?**

The 2010 Annual Employment and Wages data are available now on the LWC's website.

Begin on the LWC home page and select Labor Market Information. Scroll down the page under the LMI Products section and select Employment and Wages - Annually.

[http://www.laworks.net/LaborMarketInfo/LMI\\_WageDataAnnual2002toPresent.asp?year=2010](http://www.laworks.net/LaborMarketInfo/LMI_WageDataAnnual2002toPresent.asp?year=2010)

•**Are the First Quarter 2011 Employment and Wages data on the LWC website?**

Yes, the First Quarter 2011 Employment and Wages data are on the LWC website.

Begin on the LWC home page and select Labor Market Information. Scroll down the page under the LMI Products section and select Employment and Wages – Quarterly.

[http://www.laworks.net/LaborMarketInfo/LMI\\_WageData2002toPresent.asp?year=2011&qtr=1](http://www.laworks.net/LaborMarketInfo/LMI_WageData2002toPresent.asp?year=2011&qtr=1)

Here are additional web navigations to the 2010 Annual Employment and Wages and the First Quarter 2011 Employment and Wages.

Additional Web Navigation #1: Begin on the LWC Home page, select Downloads, then under Download Categories select Complete Alphabetical Listing. Then select either Employment and Wages Annual Report or Quarterly Report.

Additional Web Navigation #2: Begin on the LWC Home page, select Labor Market Information, and then select LOIS (Louisiana Occupational Information System). Use the green menu to the left for the following directions. Under Historic Data Analysis scroll over Employment and Wage Data, Industry Data, and select Quarterly Census of Employment and Wages (QCEW).

Additional Web Navigation #3: Begin on the LWC Home page, select Labor Market Information, and then scroll down under the LMI Products section and select LMI Downloads. Then select Employment and Wages Reports for either Annual Data or Quarterly Data.



Office of Occupational Information Services  
Research & Statistics Division  
Post Office Box 94094  
Baton Rouge, LA 70804-9094

Data for: 10/2011



**Workforce At A Glance** is published monthly by the Louisiana Workforce Commission. The material in this publication is not copyrighted and may be reproduced; however, the LWC would appreciate credit for the material used and a copy of the reprint.

**LMI Staff:**

Patty Granier, Manager  
Ramona Robichaux, Supervisor  
Ronald Smith, Layout and Design  
Karen Clark, Jonathan Helis

**Contributors:**

Natalie Foster-Lawrence, Mark Jones, Tara Robinson,  
Helen Hilliard, and Karen Clark

**Contact Us:**

Phone (225) 342-3141; Fax (225) 219-7759  
Toll Free (888) 302-7662;  
Email [OOIS@ldol.state.la.us](mailto:OOIS@ldol.state.la.us)

**Bobby Jindal, Governor**  
State of Louisiana

**Curt Eysink, Executive Director**  
Louisiana Workforce Commission

Raj Jindal,  
Information Technology Director

Visit our website:  
[www.laworks.net](http://www.laworks.net)