

Louisiana Workforce

at a glance

www.laworks.net

Release Date: Dec. 20, 2011

Data For: Nov. 2011

In This Issue

- 2 Economic Comparison
- 3 NSA State & Area Employment
- 4 – 7 Data Trends (Graphs)
- 8 – 10 Nonfarm Employment
- 11 – 12 Unemployment Rates & Civilian Labor Force
- 13 Average Hours & Earnings
- 14 UI Claimants & Labor Market Q & A
- 15 – 16 Glossary, Data Constraints, Downloads & Web Links

Statewide Overview

Seasonally adjusted nonfarm employment for Louisiana was estimated at 1,936,800 in November 2011. This represents a gain of 3,400 jobs from the previous month, and a 46,700-job increase from November 2010. Trade, transportation, and utilities showed the largest over-the-month gain, adding 1,400 jobs. Education and health services posted the largest over-the-year change, adding 18,600 jobs.

Over the month, seven of the 11 industry sectors had increases in employment while four showed declines. After trade, transportation, and utilities, the next largest increase was seen in professional and business services, which grew by 1,300 jobs. Education and health services rose by 1,000 over the month, while financial activities added 700 jobs. The government sector added 500 jobs from October. Both the mining and logging sector and the information sector added 100 jobs over the month. The leisure and hospitality sector showed the largest over-the-month decline, losing 700 jobs from October 2010. Construction declined by 600 jobs over the month. The manufacturing sector lost 300 jobs from October, while other services lost 100.

Over the year, nine of the 11 sectors added jobs. After education and health services, the largest over-the-year gain occurred in manufacturing, which added 6,900 jobs. Leisure and hospitality grew by 5,100 jobs compared to last November, while the financial activities sector added 4,900 jobs. Trade, transportation, and utilities added 4,700 jobs over the year. Mining and logging added 3,200 while professional and business services increased by 2,800 jobs. Construction added 2,400 jobs, while the information sector added 600. Over-the-year declines were seen in the other services sector and the government sector, losing 1,900 and 600 jobs, respectively.

The November 2011 preliminary seasonally adjusted unemployment rate for Louisiana was 6.9 percent, a decrease from the October revised rate of 7.0 percent. The national unemployment rate for November was 8.6 percent, a decrease from the October rate of 9.0 percent. Total unemployment in the state for November was 140,690. The state civilian labor force increased to 2,047,971 with an increase in total employment to 1,907,281.

Economic Indicators

Seasonally Adjusted	PRELIMINARY NOVEMBER 2011	
	United States	Louisiana
Civilian Labor Force		
Labor Force	153,883,000	2,047,971
Employed	140,580,000	1,907,281
Unemployed	13,303,000	140,690
Unemployment Rate	8.6	6.9
Nonfarm Wage and Salary Employment	NOV 2011	NOV 2011
	United States	Louisiana
Total Nonfarm	131,708,000	1,936,800
Mining and Logging	815,000	55,300
Construction	5,522,000	123,900
Manufacturing	11,764,000	144,700
Trade, Transportation, and Utilities	25,065,000	371,200
Information	2,645,000	28,600
Financial Activities	7,626,000	97,700
Professional and Business Services	17,365,000	195,900
Education and Health Services	20,152,000	292,200
Leisure and Hospitality	13,310,000	201,400
Other Services	5,455,000	64,800
Government	21,989,000	361,100
All Employees Average Hours & Earnings (Not Seasonally Adjusted)		
Construction	NOV 2011	NOV 2011
	United States	Louisiana
Average Weekly Earnings	\$ 983.53	\$ 938.95
Average Weekly Hours	38.6	41.4
Average Hourly Wages	\$ 25.48	\$ 22.68
Manufacturing		
Average Weekly Earnings	\$ 964.66	\$ 1,052.37
Average Weekly Hours	40.6	42.4
Average Hourly Wages	\$ 23.76	\$ 24.82
Louisiana Unemployment Insurance Activities		
Claims	NOV 2011	
Initial New & Renewals	14,801	
Continued Weekly Intrastate Only	151,854	
Insured Unemployment Rate	2.4	
Benefits		
Number of First Payment	7,305	
Benefits Paid (000's)	\$ 25,869	
Weeks Compensated	133,154	
Average Wkly. Benefit Amount	\$ 196.39	
Average Duration of Claim (weeks)	18.2	
Exhaustions	3,549	
United States Consumer Price Index		
	NOV 2011	
All Urban Consumers	226.2	



The civilian labor force and nonfarm **estimates** are prepared according to Bureau of Labor Statistics (BLS) methodology and are comparable with the U.S. and other states' data. For more information, go to page 15.

Economic Comparison

Seasonally Adjusted	PRELIMINARY NOVEMBER 2011		REVISED OCTOBER 2011		REVISED NOVEMBER 2010	
	United States	Louisiana	United States	Louisiana	United States	Louisiana
Civilian Labor Force						
Labor Force	153,883,000	2,047,971	154,198,000	2,042,928	153,950,000	2,088,795
Employed	140,580,000	1,907,281	140,302,000	1,900,613	138,909,000	1,928,199
Unemployed	13,303,000	140,690	13,897,000	142,315	15,041,000	160,596
Unemployment Rate	8.6	6.9	9.0	7.0	9.8	7.7
Nonfarm Wage and Salary Employment	NOV 2011	NOV 2011	OCT 2011	OCT 2011	NOV 2010	NOV 2010
	United States	Louisiana	United States	Louisiana	United States	Louisiana
Total Nonfarm	131,708,000	1,936,800	131,588,000	1,933,400	130,108,000	1,890,100
Mining and Logging	815,000	55,300	811,000	55,200	735,000	52,100
Construction	5,522,000	123,900	5,534,000	124,500	5,504,000	121,500
Manufacturing	11,764,000	144,700	11,762,000	145,000	11,554,000	137,800
Trade, Transportation, and Utilities	25,065,000	371,200	25,007,000	369,800	24,684,000	366,500
Information	2,645,000	28,600	2,649,000	28,500	2,699,000	28,000
Financial Activities	7,626,000	97,700	7,618,000	97,000	7,616,000	92,800
Professional and Business Services	17,365,000	195,900	17,332,000	194,600	16,844,000	193,100
Education and Health Services	20,152,000	292,200	20,125,000	291,200	19,732,000	273,600
Leisure and Hospitality	13,310,000	201,400	13,288,000	202,100	13,057,000	196,300
Other Services	5,455,000	64,800	5,453,000	64,900	5,416,000	66,700
Government	21,989,000	361,100	22,009,000	360,600	22,267,000	361,700

All Employees Average Hours & Earnings

Construction	United States (Not Seasonally Adjusted)			Louisiana (Not Seasonally Adjusted)		
	NOV 2011	OCT 2011	NOV 2010	NOV 2011	OCT 2011	NOV 2010
Average Weekly Earnings	\$ 983.53	\$ 993.12	\$ 970.91	\$ 938.95	\$ 950.53	\$ 906.64
Average Weekly Hours	38.6	38.9	38.3	41.4	41.8	41.8
Average Hourly Wages	\$ 25.48	\$ 25.53	\$ 25.35	\$ 22.68	\$ 22.74	\$ 21.69
Manufacturing						
Average Weekly Earnings	\$ 964.66	\$ 973.08	\$ 952.79	\$ 1,052.37	\$ 1,069.57	\$ 968.01
Average Weekly Hours	40.6	40.8	40.7	42.4	42.8	41.0
Average Hourly Wages	\$ 23.76	\$ 23.85	\$ 23.41	\$ 24.82	\$ 24.99	\$ 23.61

Louisiana Unemployment Insurance Activities

Claims	NOV 2011	OCT 2011	NOV 2010	% Change From	
				OCT 2011	NOV 2010
Initial New & Renewals	14,801	13,515	16,499	9.5	-10.3
Continued Weekly Intrastate Only	151,854	180,549	215,875	-15.9	-29.7
Insured Unemployment Rate*	2.4	2.5	2.8	-5.2	-15.4
Benefits					
Number of First Payment	7,305	7,504	9,557	-2.7	-23.6
Benefits Paid (000's)	\$ 25,869	\$ 29,940	\$ 35,298	-13.6	-26.7
Weeks Compensated	133,154	155,241	183,685	-14.2	-27.5
Average Wkly. Benefit Amount	\$ 196.39	\$ 194.84	\$ 194.18	0.8	1.1
Average Duration of Claim (w eeks)	18.2	20.7	19.2	-11.9	-5.2
Exhaustions	3,549	4,389	5,613	-19.1	-36.8

* Insured unemployment rate is for the week including the 12th of the month.

United States Consumer Price Index

	NOV 2011	% Change From:		OCT 2011	% Change From:	
	Index	Prior Month	Prior Year	Index	Prior Month	Prior Year
All Urban Consumers	226.2	-0.1	3.4	226.4	-0.2	3.5

Not Seasonally Adjusted State and Area Employment

Not seasonally adjusted nonfarm employment for Louisiana was estimated at 1,946,100 for November 2011. Over the month, employment rose by 6,300 jobs from October, while over the year employment gained 46,700 jobs. Goods-producing employment lost 2,300 jobs over the month, while the service-providing employment added 8,600 jobs when compared to October. Over the year, goods-producing industries gained 12,600 jobs while the service-providing sector gained 34,100.

Total nonfarm employment in November for the Alexandria MSA was 65,500, an increase of 500 jobs from October, and a gain of 700 from a year ago. The goods-producing sector showed no change over the month, but added 100 jobs over the year. Service-providing employment increased by 500 jobs from October and gained 600 jobs from November 2010.

Total nonfarm employment for the Baton Rouge MSA was estimated at 366,200 for November 2011. Over the month, the MSA showed an increase of 1,500 jobs, while over the year, nonfarm employment rose by 500 jobs. Goods-producing employment showed a gain of 600 jobs from last month and an increase of 2,100 jobs from last year. The service-providing sector added 900 jobs from October but lost 1,600 jobs over the year.

The Houma MSA nonfarm employment was estimated at 97,300 for November 2011. This shows a gain from October of 500 jobs and a gain from last November of 3,100. Goods-producing lost 100 over the month, while adding 800 jobs from last year. Service-providing rose by 600 jobs from last month and picked up 2,300 jobs over the year.

Total nonfarm employment for the Lafayette MSA was estimated at 153,600 for November 2011. This represents a decrease from October of 900 jobs but an increase of 4,800 jobs from last year. Over the month, goods-producing employment fell by 800, while the service-providing sector lost 100 jobs. Over the year, the goods-producing sector gained 1,800 jobs, while the service-providing sector added 3,000 jobs.

Total nonfarm employment for the Lake Charles MSA was 91,500 for October 2011. This represents an increase of 900 from October, and an increase of 3,000 jobs over the year. Over the month, the goods-producing sector lost 200 jobs, while the service-providing sector added 1,100 jobs. The goods-producing sector added 300 jobs from last November, while the service-providing sector increased by 2,700 jobs over the year.

Total nonfarm employment for the Monroe MSA was estimated at 76,200 for November 2011. This shows a gain of 200 jobs from October, and an increase of 400 jobs over the year. Goods-producing employment lost 200 jobs over the month, while adding 100 jobs over the year. The service-providing sector added 400 jobs from October and 300 jobs over the year.

Total nonfarm employment for the New Orleans MSA was 533,300 for November 2011. Over the month, the MSA added 1,400 jobs, while over the year saw an increase of 9,000 positions. Goods-producing employment showed a decline of 700 jobs from October, and a loss of 600 from November 2010. The service-providing sector increased by 2,100 jobs from October, and added 9,600 jobs from November 2010.

Total nonfarm employment for the Shreveport MSA was 181,400 for November 2011. This shows a gain of 2,200 jobs from last month and a gain of 2,000 from November 2010. Goods-producing employment showed no change over the month, and lost 200 jobs from November 2010. Service-providing employment added 2,200 jobs both over the month and over the year.

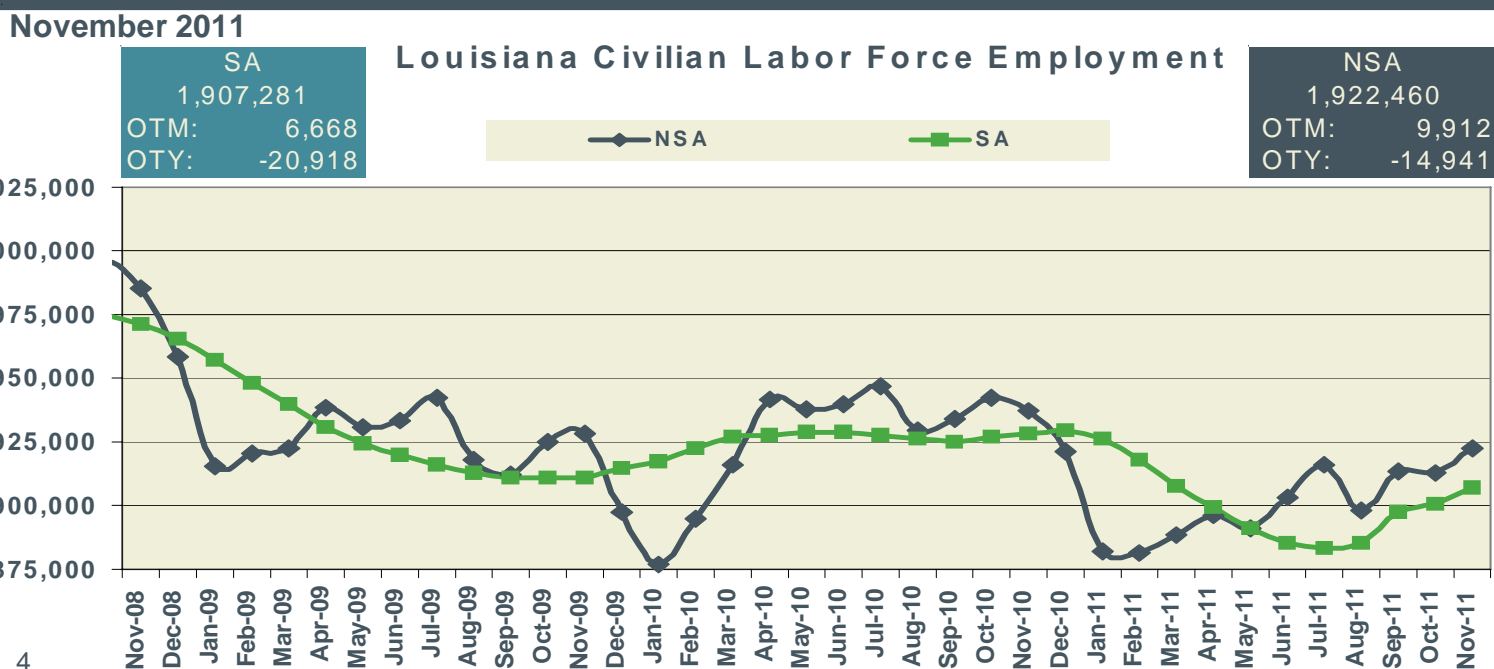
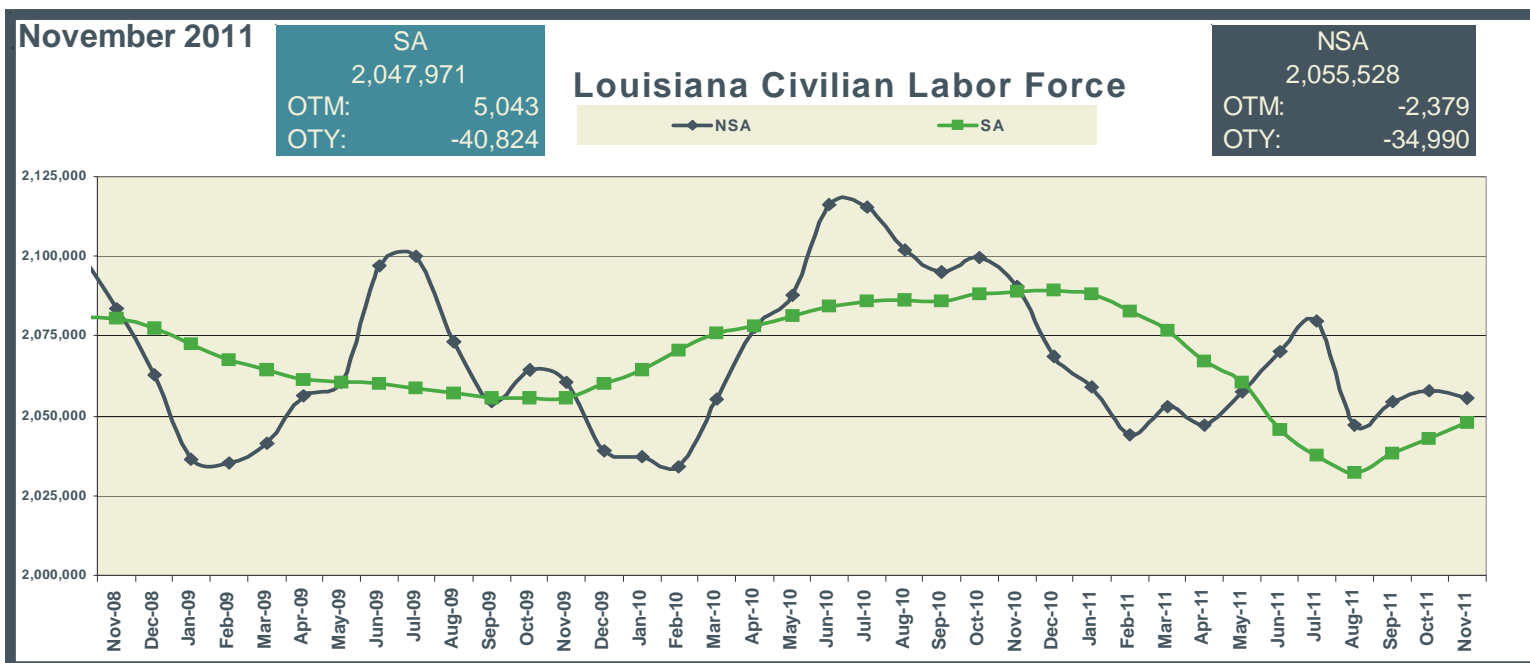
Keys to Graphs

The following graphs have been designed to reflect the over-the-year trends in the statistical data. Below are the most frequently used abbreviations.

- OTM over-the-month change in employment
- OTY over-the-year change in employment
- SA seasonally adjusted estimates
- NSA not seasonally adjusted estimates

Graphs for statewide reflect seasonally adjusted (SA) estimates compared to not seasonally adjusted (NSA) data.

Metropolitan Statistical Areas (MSAs) graphs denote nonfarm employment levels compared to a three year red trend line of the estimated employment. The navy lines in the graphs are the over-the-month changes for each year.



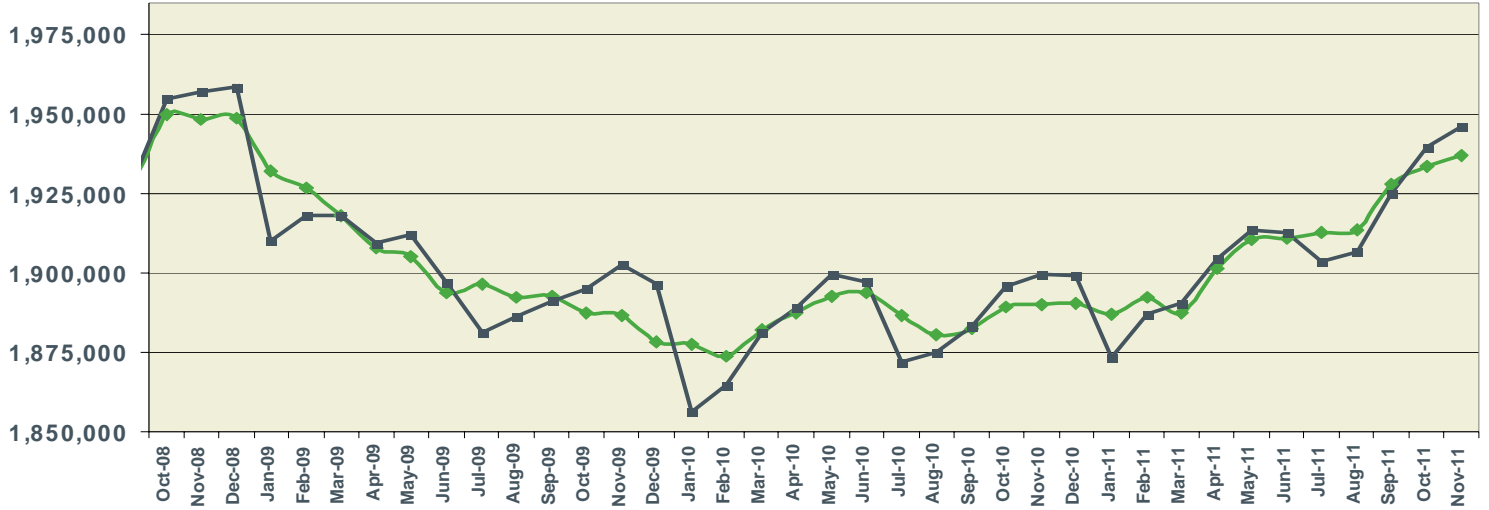
November 2011

SA
1,936,800
OTM: 3,400
OTY: 46,700

Louisiana Nonfarm Employment

NSA
1,946,100
OTM: 6,300
OTY: 46,700

SA Nonfarm NSA Nonfarm

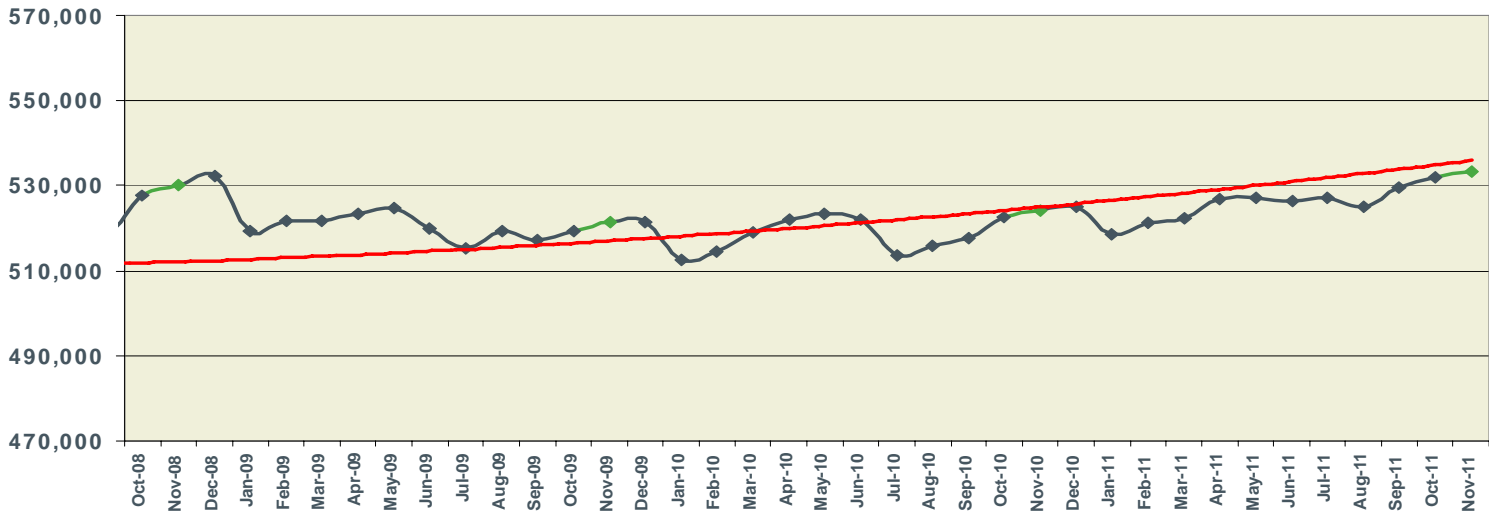


November 2011

New Orleans MSA Nonfarm Employment

NSA
533,300
OTM: 1,400
OTY: 9,000

Monthly Estimate 3 Year Trend

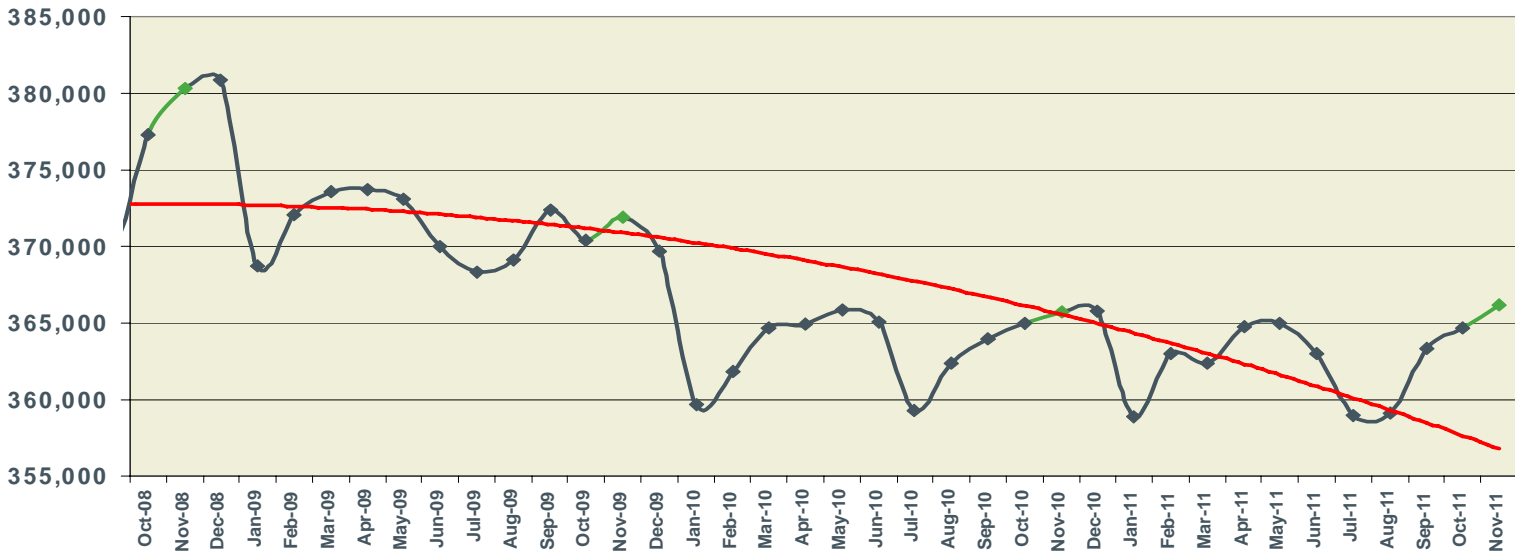


November 2011

Baton Rouge MSA Nonfarm Employment

NSA
366,200
OTM: 1,500
OTY: 500

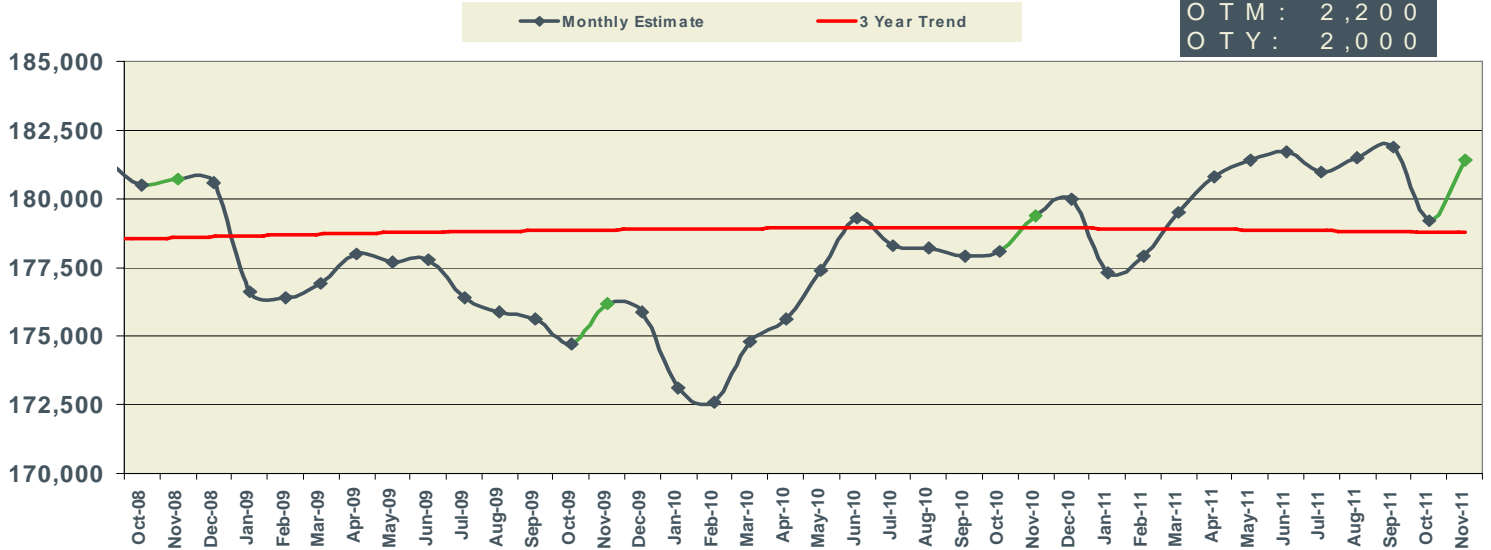
Monthly Estimate 3 Year Trend



November 2011

Shreveport MSA Nonfarm Employment

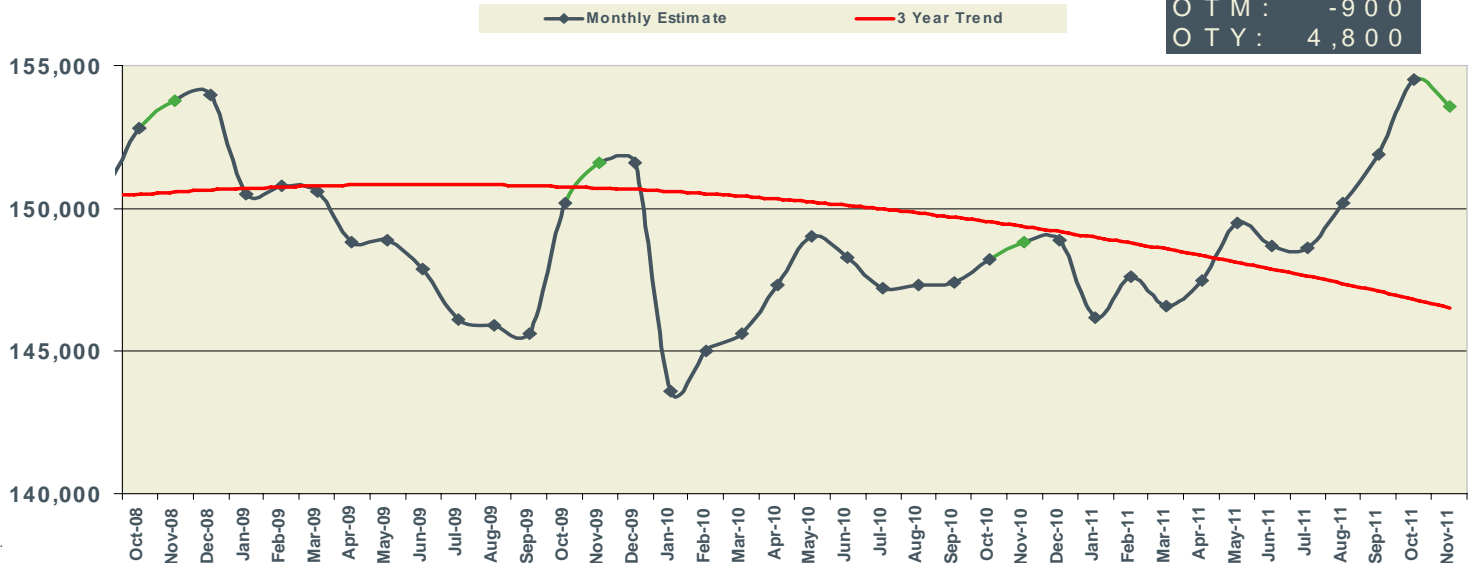
NSA
181,400
OTM : 2,200
OTY : 2,000



November 2011

Lafayette MSA Nonfarm Employment

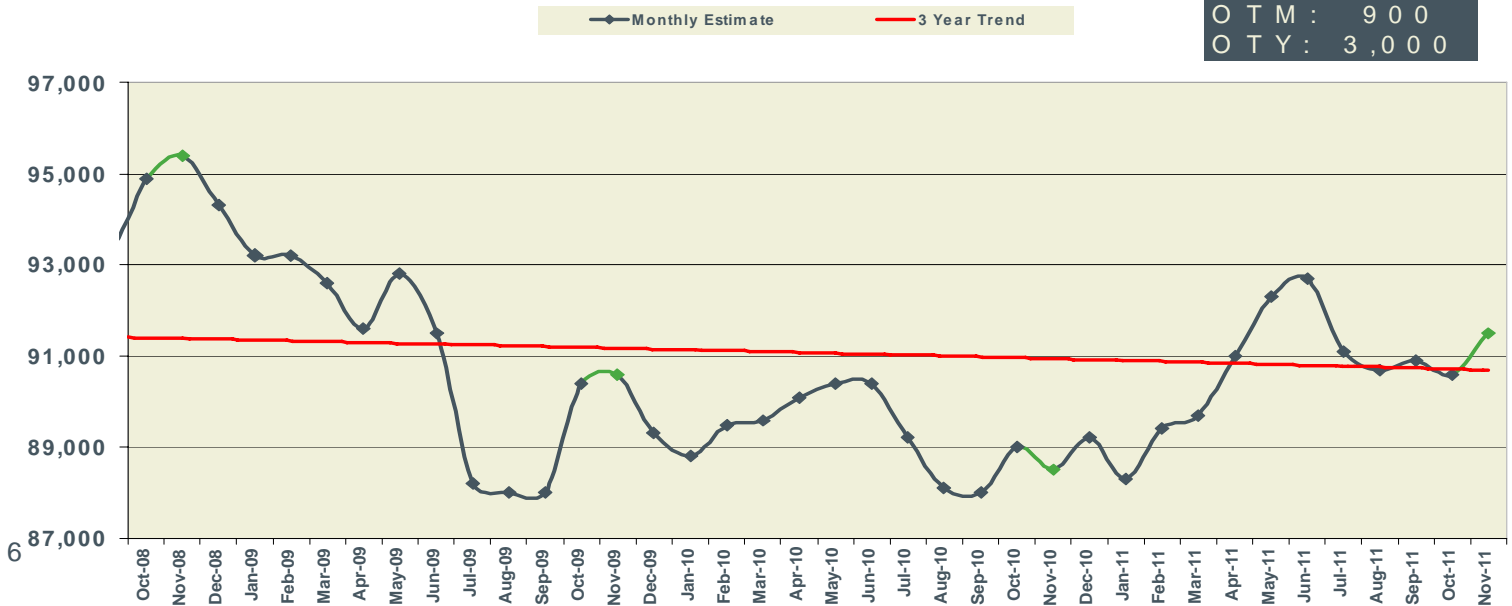
NSA
153,600
OTM : -900
OTY : 4,800



November 2011

Lake Charles MSA Nonfarm Employment

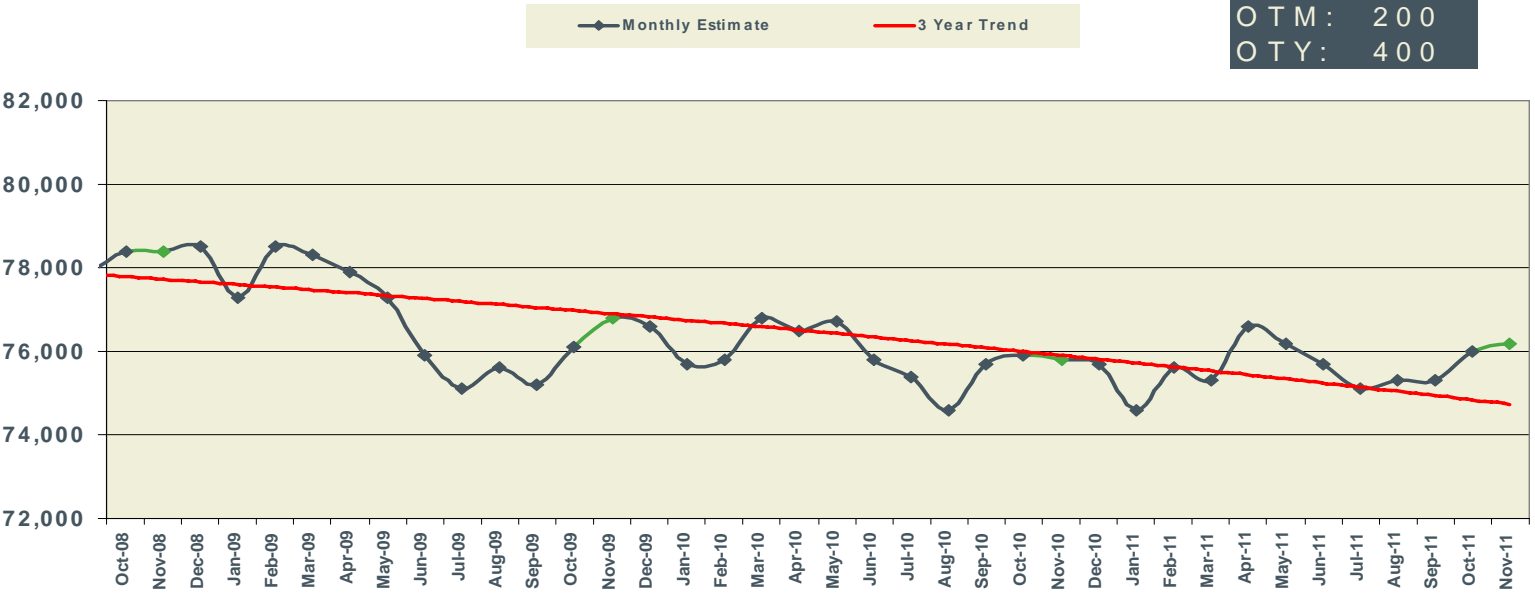
NSA
91,500
OTM : 900
OTY : 3,000



November 2011

Monroe MSA Nonfarm Employment

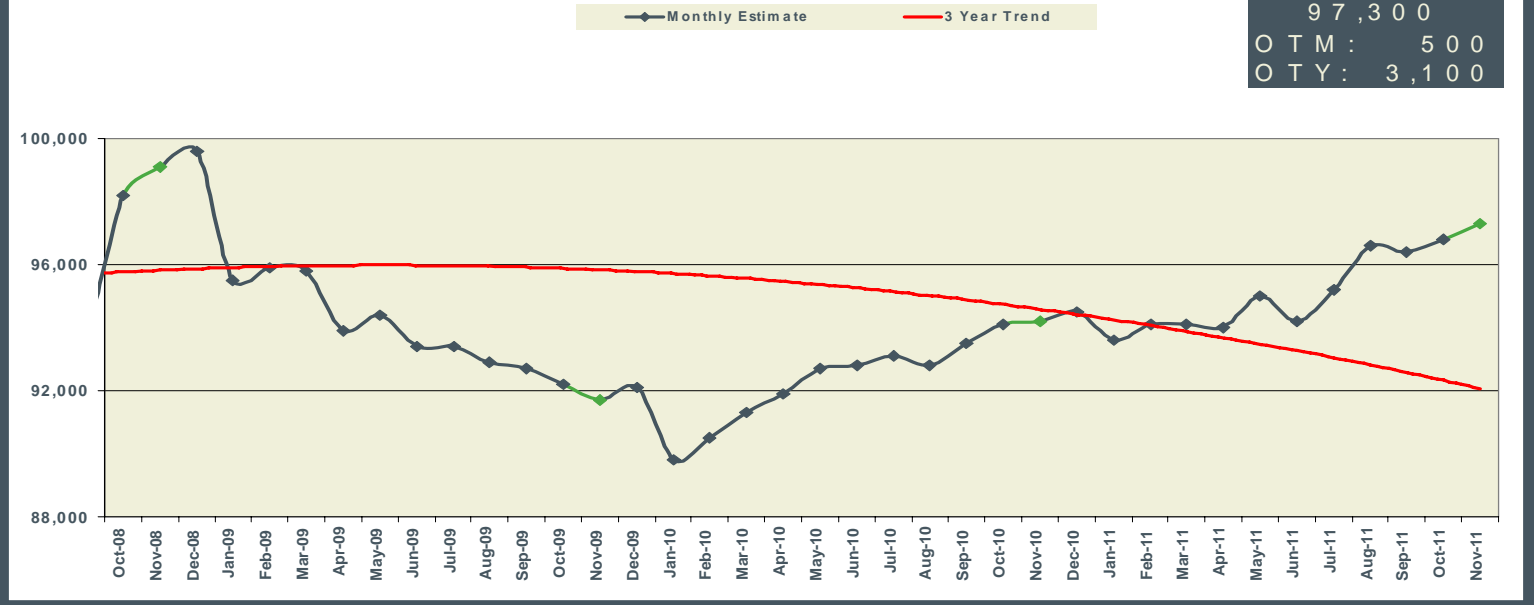
NSA
76,200
OTM: 200
OTY: 400



November 2011

Houma MSA Nonfarm Employment

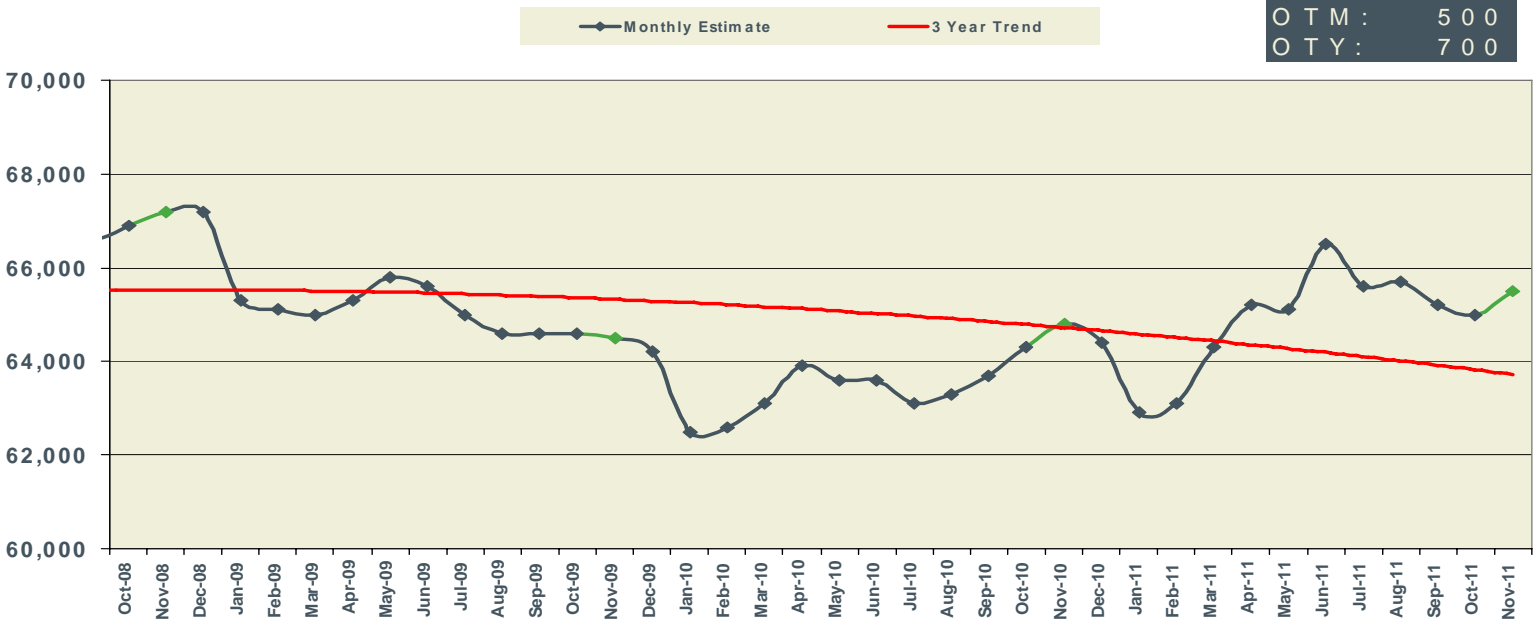
NSA
97,300
OTM: 500
OTY: 3,100



November 2011

Alexandria MSA Nonfarm Employment

NSA
65,500
OTM: 500
OTY: 700



8 LOUISIANA & MSAs NONFARM EMPLOYMENT									
Not Seasonally Adjusted	LOUISIANA			NEW ORLEANS-METAIRIE-KENNER MSA			BATON ROUGE MSA		
	PREL	REV	REV	PREL	REV	REV	PREL	REV	REV
	NOV 2011	OCT 2011	NOV 2010	NOV 2011	OCT 2011	NOV 2010	NOV 2011	OCT 2011	NOV 2010
Total Nonfarm	1,946,100	1,939,800	1,899,400	533,300	531,900	524,300	366,200	364,700	365,700
Total Private	1,580,300	1,575,200	1,533,000	451,100	449,600	442,200	288,900	287,700	286,900
Goods-Producing	325,400	327,700	312,800	68,400	69,100	69,000	66,800	66,200	64,700
Mining & Logging	55,300	55,600	52,100	7,500	7,600	7,500	2,000	2,000	2,000
Oil & Gas Extraction	8,600	8,600	8,500	2,800	2,900	2,900			
Crude Petroleum & Natural Gas Extraction	8,200	8,200	8,000						
Support Activities for Mining	41,000	41,100	39,500						
Drilling Oil & Gas Wells	9,000	9,100	9,000						
Construction	124,000	125,500	121,600	28,300	28,900	30,000	39,900	39,300	37,900
Construction of Buildings	20,800	21,000	21,700				7,300	7,100	6,800
Residential Building Construction	5,900	6,100	5,900						
Nonresidential Building Construction	14,900	14,900	15,800				6,600	6,500	6,300
Heavy & Civil Engineering Construction	39,800	40,600	39,900	8,900	9,100	8,700	13,400	13,400	13,300
Utility System Construction	20,200	20,400	19,600						
Specialty Trade Contractors	63,400	63,900	60,000	15,400	15,600	15,700	19,200	18,800	17,800
Manufacturing	146,100	146,600	139,100	32,600	32,600	31,500	24,900	24,900	24,800
Durable Goods	72,000	72,200	68,400	15,700	15,700	15,500			
Transportation Equipment Manufacturing	16,100	15,900	16,600	6,600	6,700	7,300			
Ship & Boat Building	11,100	11,000	11,600	5,600	5,500	5,900			
Nondurable Goods	74,100	74,400	70,700	16,900	16,900	16,000	16,900	16,900	16,900
Food Manufacturing	16,500	16,700	17,100						
Paper Manufacturing	7,000	7,000	7,300						
Petroleum & Coal Products Mfg. & Chemical Mfg.									
Petroleum & Coal Products Manufacturing	11,700	11,800	11,600						
Chemical Manufacturing	23,700	23,700	22,700	4,800	4,800	4,400	10,000	10,000	9,400
Basic Chemical Manufacturing	12,200	12,200	12,300				5,600	5,600	5,500
Service-Providing	1,620,700	1,612,100	1,586,600	464,900	462,800	455,300	299,400	298,500	301,000
Private Service-Providing	1,254,900	1,247,500	1,220,200	382,700	380,500	373,200	222,100	221,500	222,200
Trade, Transportation, & Utilities	374,500	369,800	369,800	104,700	103,900	104,200	65,500	64,100	65,100
Wholesale Trade	72,300	71,800	70,600	22,600	22,900	22,100	12,200	12,200	12,300
Merchant Wholesalers, Durable Goods	38,000	37,600	36,700	10,500	10,400	10,500			
Merchant Wholesalers, Nondurable Goods	24,100	23,900	24,600	7,900	7,800	7,800			
Retail Trade	220,800	215,700	220,500	57,200	55,900	57,700	41,500	40,100	41,100
Clothing & Clothing Accessories Stores, General Merchandise									
Motor Vehicle & Parts Dealers	25,500	25,400	25,600						
Building Material & Garden Equipment & Supplies Dealers	18,700	18,700	19,000						
Food & Beverage Stores	35,200	34,800	35,600						
Grocery Stores	30,600	30,400	30,800	7,900	8,000	8,300	5,600	5,600	5,700
Health & Personal Care Stores	15,900	15,700	15,600						
Gasoline Stations	18,700	18,700	18,300						
Clothing and Clothing Accessories Stores	19,100	17,600	19,200						
General Merchandise Stores	53,800	51,400	54,000	12,500	12,100	12,800	9,500	9,100	9,600
Department Stores	17,900	16,300	17,900				2,600	2,400	2,800
Transportation, Warehousing, & Utilities	81,400	82,300	78,700	24,900	25,100	24,400	11,800	11,800	11,700
Transportation and Warehousing	72,600	73,300	69,300						
Truck Transportation	16,300	16,300	16,400						
Support Activities for Transportation	20,300	20,600	19,400						
Information	28,800	28,500	28,200	8,800	8,800	8,900	5,200	5,200	5,100
Telecommunications	10,500	10,500	10,700						
Financial Activities	97,800	97,100	92,900	25,700	25,700	25,800	16,500	16,500	16,800
Finance & Insurance	65,900	66,000	62,400	18,400	18,400	18,100	11,800	11,800	12,000
Credit Intermediation & Related Activities	31,800	31,700	32,000	7,400	7,400	7,500			
Depository Credit Intermediation	22,600	22,500	22,900	5,800	5,800	5,800	4,300	4,300	4,300
Insurance Carriers & Related Activities	26,300	26,400	26,600						
Real Estate & Rental & Leasing	31,900	31,100	30,500						
Professional & Business Services	196,000	195,100	193,200	69,300	68,900	67,800	41,200	41,200	41,500
Professional, Scientific, & Technical Services	80,100	79,100	78,700	29,700	29,300	28,800	18,700	18,700	18,400
Legal Services	19,000	19,200	19,000	8,400	8,400	8,200			
Accounting, Tax Preparation, Bookkeeping & Payroll Services	9,500	9,300	10,000						
Architectural, Engineering, & Related Services	24,300	24,300	23,000						
Management of Companies & Enterprises	24,600	24,400	23,700	8,400	8,400	8,100			
Admin. & Support & Waste Mgmt. & Remediation Serv.	91,300	91,600	90,800	31,200	31,200	30,900	18,200	18,200	18,400
Administrative & Support Services	81,500	81,200	81,600	28,800	28,600	28,400			
Employment Services	29,300	29,000	29,900	11,000	10,900	10,400			
Services to Buildings & Dwellings	19,100	19,400	19,500						
Education & Health Services	293,800	292,900	275,200	81,200	80,700	76,800	48,700	49,500	49,000
Educational Services	39,900	39,300	38,500	22,000	21,700	21,000			
Colleges, Universities, & Professional Schools	19,000	19,100	21,000	12,500	12,100	11,700			
Health Care & Social Assistance	253,900	253,600	236,700	59,200	59,000	55,800	42,300	43,300	42,100
Ambulatory Health Care Services	92,900	93,100	85,600	22,100	22,100	21,100	18,500	18,400	17,500
Offices of Physicians	36,400	36,000	33,300						
Home Health Care Services	22,800	22,700	21,600						
Hospitals	69,800	69,400	65,800	18,800	18,700	18,400	11,900	11,800	11,600
Nursing & Residential Care Facilities	43,700	44,000	41,600						
Nursing Care Facilities	27,000	27,000	25,900						
Social Assistance	47,500	47,100	43,700						
Leisure & Hospitality	199,400	199,500	194,400	74,000	73,500	70,700	32,200	32,200	31,900
Arts, Entertainment, & Recreation	26,100	26,400	27,600	9,500	9,700	10,400			
Amusement, Gambling, & Recreation Industries	21,300	21,700	21,300	6,000	6,100	6,000			
Gambling Industries	9,900	9,900	10,500	2,100	2,100	2,100			
Accommodation & Food Services	173,300	173,100	166,800	64,500	63,800	60,300	27,700	27,800	26,900
Accommodation	29,500	29,500	27,000	13,700	13,700	13,100			
Food Services & Drinking Places	143,800	143,600	139,800	50,800	50,100	47,200	25,400	25,300	25,100
Other Services	64,600	64,600	66,500	19,000	19,000	19,000	12,800	12,800	12,800
Repair & Maintenance	19,200	18,900	19,400						
Automotive Repair & Maintenance	10,500	10,500	10,600						
Personal & Laundry Services	15,300	15,300	15,300						
Government	365,800	364,600	366,400	82,200	82,300	82,100	77,300	77,000	78,800
Federal Government	31,000	31,300	31,400	12,200	12,300	12,400	2,900	2,900	3,000
State Government	111,700	111,000	115,200	18,900	18,900	19,900	40,400	40,200	42,200
Local Government	223,100	222,300	219,800	51,100	51,100	49,800	34,000	33,900	33,600

LOUISIANA & MSAs NONFARM EMPLOYMENT

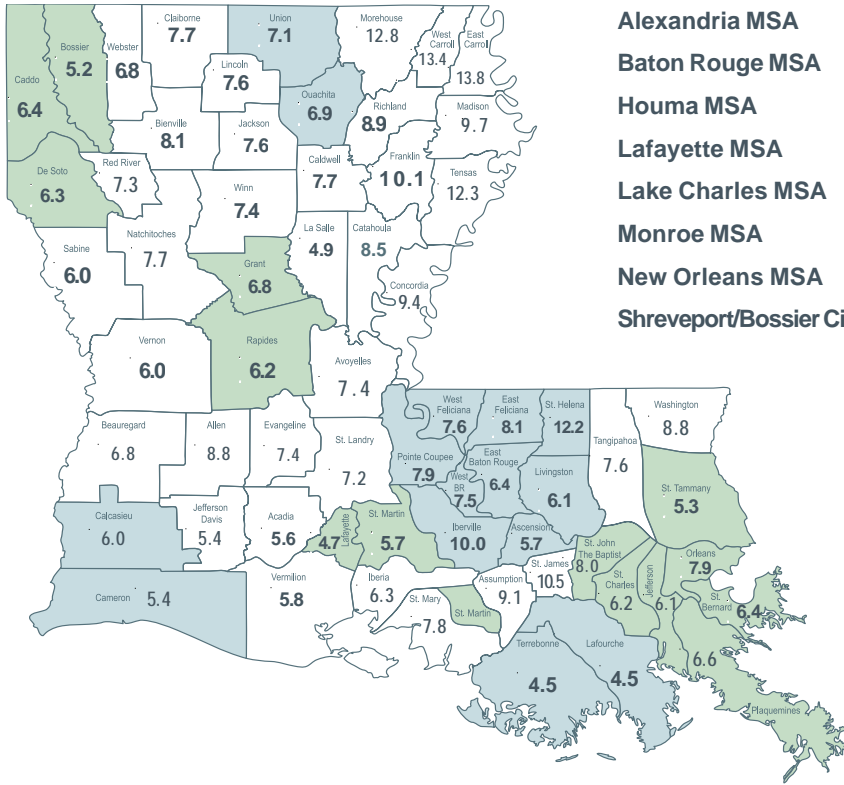
9

Not Seasonally Adjusted	SHREVEPORT-BOSSIER CITY MSA			LAFAYETTE MSA			LAKE CHARLES MSA		
	PREL	REV	REV	PREL	REV	REV	PREL	REV	REV
	NOV 2011	OCT 2011	NOV 2010	NOV 2011	OCT 2011	NOV 2010	NOV 2011	OCT 2011	NOV 2010
Total Nonfarm	181,400	179,200	179,400	153,600	154,500	148,800	91,500	90,600	88,500
Total Private	145,400	143,500	143,800	135,500	136,700	130,900	75,700	75,100	72,700
Goods-Producing	25,300	25,300	25,500	33,100	33,900	31,300	18,400	18,600	18,100
Mining & Logging	6,400	6,400	6,400	16,600	17,100	15,300	1,100	1,100	1,100
Oil & Gas Extraction									
Crude Petroleum & Natural Gas Extraction									
Support Activities for Mining				14,100	14,400	13,300			
Drilling Oil & Gas Wells									
Construction	9,000	9,000	9,100	6,000	6,100	6,300	7,900	8,000	8,000
Construction of Buildings									
Residential Building Construction									
Nonresidential Building Construction									
Heavy & Civil Engineering Construction							3,300	3,400	3,500
Utility System Construction									
Specialty Trade Contractors									
Manufacturing	9,900	9,900	10,000	10,500	10,700	9,700	9,400	9,500	9,000
Durable Goods									
Transportation Equipment Manufacturing	1,000	1,000	1,100						
Ship & Boat Building									
Nondurable Goods							7,000	7,100	6,900
Food Manufacturing									
Paper Manufacturing									
Petroleum & Coal Products Mfg. & Chemical Mfg.							6,700	6,700	6,400
Petroleum & Coal Products Manufacturing									
Chemical Manufacturing									
Basic Chemical Manufacturing									
Service-Providing	156,100	153,900	153,900	120,500	120,600	117,500	73,100	72,000	70,400
Private Service-Providing	120,100	118,200	118,300	102,400	102,800	99,600	57,300	56,500	54,600
Trade, Transportation, & Utilities	35,700	34,500	33,700	30,300	29,900	29,200	16,600	16,400	16,500
Wholesale Trade	7,000	6,800	6,600	8,100	8,000	7,600			
Merchant Wholesalers, Durable Goods									
Merchant Wholesalers, Nondurable Goods									
Retail Trade	22,000	21,100	20,900	18,200	17,800	17,800	10,200	9,900	10,200
Clothing & Clothing Accessories Stores, General Merchandise							3,400	3,200	3,500
Motor Vehicle & Parts Dealers									
Building Material & Garden Equipment & Supplies Dealers									
Food & Beverage Stores									
Grocery Stores									
Health & Personal Care Stores									
Gasoline Stations									
Clothing and Clothing Accessories Stores									
General Merchandise Stores	4,800	4,600	4,700	3,900	3,700	3,800			
Department Stores									
Transportation, Warehousing, & Utilities	6,700	6,600	6,200	4,000	4,100	3,800			
Transportation and Warehousing									
Truck Transportation									
Support Activities for Transportation									
Information	4,800	4,800	4,800	2,700	2,700	2,700			
Telecommunications									
Financial Activities	7,200	7,200	7,100	8,500	8,600	8,400			
Finance & Insurance									
Credit Intermediation & Related Activities									
Depository Credit Intermediation									
Insurance Carriers & Related Activities									
Real Estate & Rental & Leasing									
Professional & Business Services	16,000	15,400	16,700	17,700	17,900	17,300	6,900	6,900	6,800
Professional, Scientific, & Technical Services				8,400	8,400	8,000			
Legal Services									
Accounting, Tax Preparation, Bookkeeping & Payroll Services									
Architectural, Engineering, & Related Services									
Management of Companies & Enterprises									
Admin. & Support & Waste Mgmt. & Remediation Serv.	9,800	9,900	10,100						
Administrative & Support Services									
Employment Services									
Services to Buildings & Dwellings									
Education & Health Services	26,900	26,800	26,300	23,200	23,400	22,200			
Educational Services									
Colleges, Universities, & Professional Schools									
Health Care & Social Assistance	25,800	25,700	25,200	21,100	21,300	20,000			
Ambulatory Health Care Services									
Offices of Physicians									
Home Health Care Services									
Hospitals	9,900	9,800	9,600	5,300	5,400	5,300	3,600	3,500	3,500
Nursing & Residential Care Facilities									
Nursing Care Facilities									
Social Assistance									
Leisure & Hospitality	21,500	21,500	21,700	15,200	15,400	14,900	11,800	11,700	11,500
Arts, Entertainment, & Recreation	5,400	5,500	5,900						
Amusement, Gambling, & Recreation Industries	5,200	5,300	5,600						
Gambling Industries	4,200	4,200	4,400						
Accommodation & Food Services	16,100	16,000	15,800	13,300	13,500	13,100	10,300	10,300	10,200
Accommodation									
Food Services & Drinking Places	13,100	13,100	13,000	12,400	12,500	12,100			
Other Services	8,000	8,000	8,000	4,800	4,900	4,900			
Repair & Maintenance									
Automotive Repair & Maintenance									
Personal & Laundry Services									
Government	36,000	35,700	35,600	18,100	17,800	17,900	15,800	15,500	15,800
Federal Government	4,800	4,700	4,700	1,100	1,100	1,100	600	600	600
State Government	11,700	11,500	11,400	6,200	5,900	5,800	4,200	4,200	4,100
Local Government	19,500	19,500	19,500	10,800	10,800	11,000	11,000	10,700	11,100

	MONROE MSA			HOUMA-BAYOU CANE- THIBODAU MSA			ALEXANDRIA MSA		
	PREL	REV	REV	PREL	REV	REV	PREL	REV	REV
	NOV 2011	OCT 2011	NOV 2010	NOV 2011	OCT 2011	NOV 2010	NOV 2011	OCT 2011	NOV 2010
<i>Not Seasonally Adjusted</i>									
Total Nonfarm	76,200	76,000	75,800	97,300	96,800	94,200	65,500	65,000	64,800
Total Private	61,700	61,600	61,300	83,500	83,000	80,200	50,700	50,200	49,700
Goods-Producing	10,400	10,600	10,300	21,000	21,100	20,200	8,600	8,600	8,500
Mining & Logging				5,900	5,900	5,700			
Oil & Gas Extraction									
Crude Petroleum & Natural Gas Extraction									
Support Activities for Mining				4,800	4,800	4,800			
Drilling Oil & Gas Wells									
Construction				6,000	6,000	5,800			
Construction of Buildings									
Residential Building Construction									
Nonresidential Building Construction									
Heavy & Civil Engineering Construction									
Utility System Construction									
Specialty Trade Contractors									
Manufacturing	6,900	7,000	6,800						
Durable Goods									
Transportation Equipment Manufacturing									
Ship & Boat Building									
Nondurable Goods	5,100	5,100	5,100						
Food Manufacturing									
Paper Manufacturing									
Petroleum & Coal Products Mfg. & Chemical Mfg.									
Petroleum & Coal Products Manufacturing									
Chemical Manufacturing									
Basic Chemical Manufacturing									
Service-Providing	65,800	65,400	65,500	76,300	75,700	74,000	56,900	56,400	56,300
Private Service-Providing	51,300	51,000	51,000	62,500	61,900	60,000	42,100	41,600	41,200
Trade, Transportation, & Utilities	13,900	13,800	13,900	25,000	25,000	23,800	11,700	11,600	11,600
Wholesale Trade									
Merchant Wholesalers, Durable Goods									
Merchant Wholesalers, Nondurable Goods									
Retail Trade	9,500	9,300	9,600	10,900	10,700	10,900	7,900	7,700	7,900
Clothing & Clothing Accessories Stores, General Merchandise	3,400	3,300	3,500						
Motor Vehicle & Parts Dealers									
Building Material & Garden Equipment & Supplies Dealers									
Food & Beverage Stores									
Grocery Stores									
Health & Personal Care Stores									
Gasoline Stations									
Clothing and Clothing Accessories Stores									
General Merchandise Stores									
Department Stores									
Transportation, Warehousing, & Utilities									
Transportation and Warehousing									
Truck Transportation									
Support Activities for Transportation				4,500	4,600	4,400			
Information									
Telecommunications									
Financial Activities									
Finance & Insurance									
Credit Intermediation & Related Activities									
Depository Credit Intermediation									
Insurance Carriers & Related Activities									
Real Estate & Rental & Leasing									
Professional & Business Services	7,300	7,300	7,200						
Professional, Scientific, & Technical Services									
Legal Services									
Accounting, Tax Preparation, Bookkeeping & Payroll Services									
Architectural, Engineering, & Related Services									
Management of Companies & Enterprises									
Admin. & Support & Waste Mgmt. & Remediation Serv.									
Administrative & Support Services				5,300	5,300	5,000			
Employment Services				3,700	3,700	3,300			
Services to Buildings & Dwellings									
Education & Health Services	13,500	13,500	13,200						
Educational Services									
Colleges, Universities, & Professional Schools									
Health Care & Social Assistance									
Ambulatory Health Care Services									
Offices of Physicians									
Home Health Care Services									
Hospitals	3,700	3,600	3,600				4,500	4,400	4,300
Nursing & Residential Care Facilities									
Nursing Care Facilities									
Social Assistance									
Leisure & Hospitality	6,800	6,800	6,800	7,600	7,600	7,500			
Arts, Entertainment, & Recreation									
Amusement, Gambling, & Recreation Industries									
Gambling Industries									
Accommodation & Food Services									
Accommodation									
Food Services & Drinking Places									
Other Services									
Repair & Maintenance									
Automotive Repair & Maintenance									
Personal & Laundry Services									
Government	14,500	14,400	14,500	13,800	13,800	14,000	14,800	14,800	15,100
Federal Government	600	600	600	400	400	400	2,900	2,900	2,900
State Government	4,500	4,500	4,600	3,200	3,200	3,300	4,500	4,500	4,800
Local Government	9,400	9,300	9,300	10,200	10,200	10,300	7,400	7,400	7,400

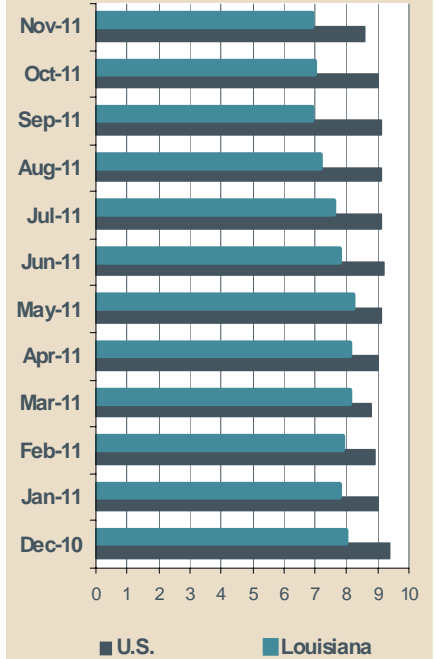
Louisiana Unemployment Rates (Not Seasonally Adjusted)

November 2011



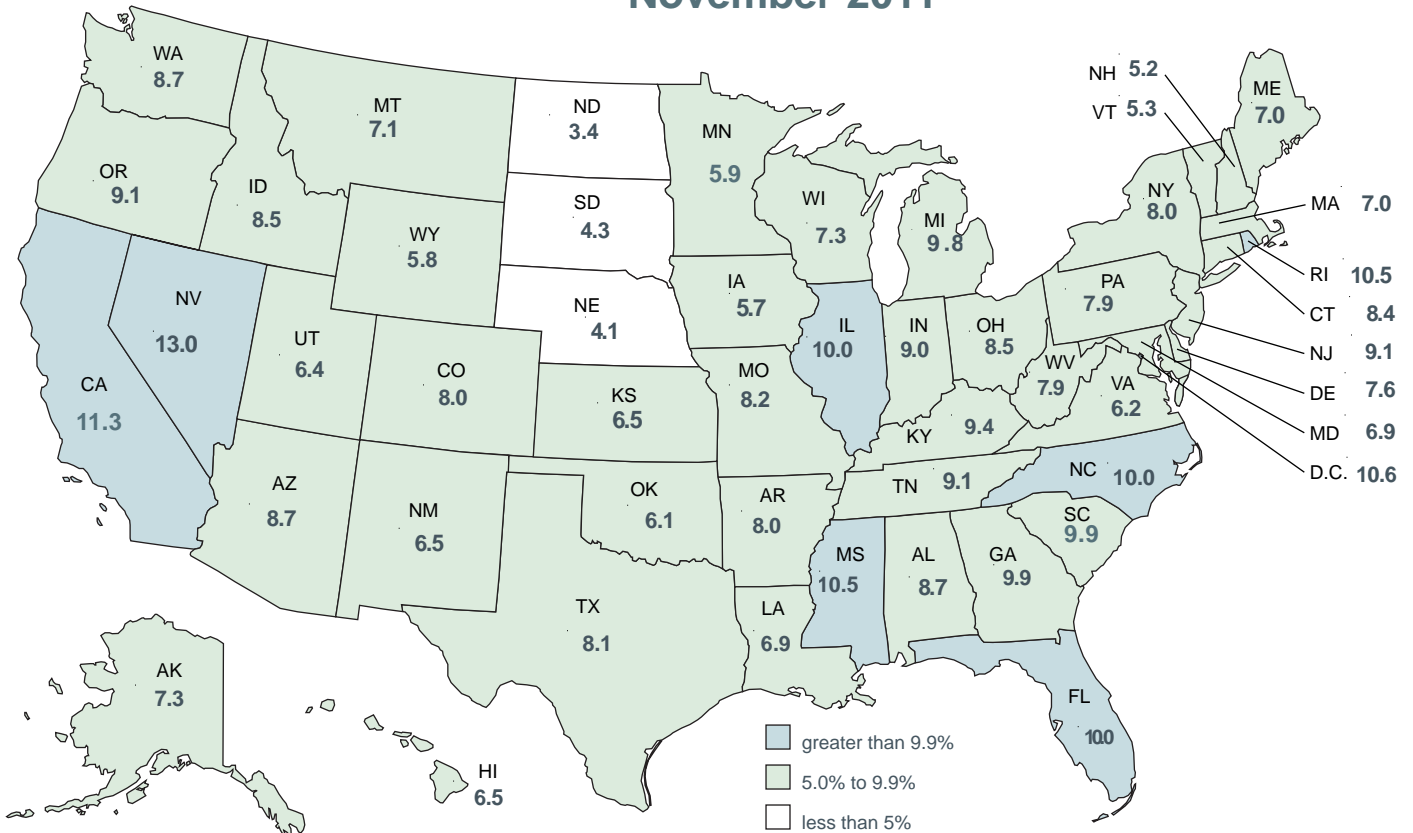
Statewide	Rate (%)
Statewide	6.5 %
Alexandria MSA	6.2 %
Baton Rouge MSA	6.6 %
Houma MSA	4.5 %
Lafayette MSA	4.9 %
Lake Charles MSA	5.9 %
Monroe MSA	6.9 %
New Orleans MSA	6.5 %
Shreveport/Bossier City MSA	6.0 %

United States - Louisiana Unemployment Rates (Seasonally Adjusted)



United States Unemployment Rates (Seasonally Adjusted)

November 2011



United States Rate 8.6

CIVILIAN LABOR FORCE (Not Seasonally Adjusted)

Area	Preliminary November 2011			Revised October 2011			Revised November 2010		
	Employed	Unemployed	Rate	Employed	Unemployed	Rate	Employed	Unemployed	Rate
UNITED STATES	141,070,000	12,613,000	8.2	140,987,000	13,102,000	8.5	139,415,000	14,282,000	9.3
LOUISIANA	1,922,460	133,068	6.5	1,912,548	145,359	7.1	1,937,401	153,117	7.3
ALEXANDRIA MSA	64,906	4,319	6.2	63,977	4,692	6.8	65,322	4,877	6.9
Grant	8,123	590	6.8	8,007	565	6.6	8,175	673	7.6
Rapides	56,783	3,729	6.2	55,970	4,127	6.9	57,147	4,204	6.9
BATON ROUGE MSA	345,351	24,265	6.6	345,124	26,388	7.1	352,684	28,175	7.4
Ascension	47,276	2,883	5.7	47,245	3,135	6.2	48,280	3,415	6.6
East Baton Rouge	199,469	13,620	6.4	199,338	15,069	7.0	203,704	15,850	7.2
East Feliciana	7,336	647	8.1	7,332	668	8.4	7,492	745	9.0
Iberville	10,975	1,225	10.0	10,968	1,247	10.2	11,208	1,321	10.5
Livingston	54,000	3,492	6.1	53,965	3,727	6.5	55,147	4,150	7.0
Pointe Coupee	8,639	746	7.9	8,634	792	8.4	8,823	860	8.9
St. Helena	3,681	510	12.2	3,679	531	12.6	3,759	557	12.9
West Baton Rouge	9,694	791	7.5	9,688	814	7.8	9,900	905	8.4
West Feliciana	4,280	352	7.6	4,277	404	8.6	4,371	371	7.8
HOUMA-BAYOU CANE- THIBODAUX MSA	100,286	4,690	4.5	99,347	5,133	4.9	99,227	5,512	5.3
Lafourche	47,354	2,207	4.5	46,911	2,380	4.8	46,854	2,511	5.1
Terrebonne	52,932	2,483	4.5	52,436	2,753	5.0	52,373	3,001	5.4
LAFAYETTE MSA	131,076	6,724	4.9	130,933	7,375	5.3	129,078	8,062	5.9
Lafayette	108,386	5,352	4.7	108,268	5,864	5.1	106,734	6,410	5.7
St. Martin	22,690	1,372	5.7	22,665	1,511	6.3	22,344	1,652	6.9
LAKE CHARLES MSA	88,789	5,610	5.9	88,101	6,056	6.4	87,850	6,516	6.9
Calcasieu	85,871	5,444	6.0	85,205	5,898	6.5	84,963	6,331	6.9
Cameron	2,918	166	5.4	2,896	158	5.2	2,887	185	6.0
MONROE MSA	74,258	5,508	6.9	73,507	5,971	7.5	75,059	6,249	7.7
Ouachita	65,187	4,810	6.9	64,528	5,249	7.5	65,890	5,384	7.6
Union	9,071	698	7.1	8,979	722	7.4	9,169	865	8.6
NEW ORLEANS-METairie- KENNER MSA	506,017	35,215	6.5	505,134	38,778	7.1	507,660	40,028	7.3
Jefferson	200,481	12,965	6.1	200,131	14,204	6.6	201,132	14,700	6.8
New Orleans City/Orleans	136,077	11,618	7.9	135,839	12,999	8.7	136,519	13,342	8.9
Plaquemines	7,556	534	6.6	7,543	538	6.7	7,581	579	7.1
St. Bernard	17,177	1,165	6.4	17,147	1,302	7.1	17,233	1,354	7.3
St. Charles	22,490	1,479	6.2	22,451	1,640	6.8	22,563	1,586	6.6
St. John Baptist	18,942	1,656	8.0	18,909	1,795	8.7	19,003	2,060	9.8
St. Tammany	103,294	5,797	5.3	103,114	6,301	5.8	103,630	6,408	5.8
SHREVEPORT-BOSSIER CITY MSA	173,962	11,163	6.0	171,505	12,188	6.6	172,902	12,692	6.8
Bossier	51,597	2,843	5.2	50,868	3,121	5.8	51,283	3,214	5.9
Caddo	111,698	7,608	6.4	110,120	8,275	7.0	111,017	8,593	7.2
De Soto	10,667	712	6.3	10,516	793	7.0	10,602	885	7.7
NON-MSA PARISHES									
Acadia (Crowley) ¹	23,989	1,411	5.6	23,781	1,550	6.1	24,459	1,691	6.5
Allen	7,994	772	8.8	7,985	821	9.3	7,999	857	9.7
Assumption (Pierre Part) ¹	9,237	920	9.1	9,197	1,021	10.0	9,371	1,061	10.2
Avoyelles	14,991	1,193	7.4	14,849	1,264	7.8	15,505	1,342	8.0
Beauregard (DeRidder) ¹	13,265	975	6.8	13,134	1,164	8.1	13,642	1,061	7.2
Bienville	5,872	520	8.1	5,800	537	8.5	6,052	558	8.4
Caldwell	4,083	342	7.7	4,097	367	8.2	4,172	409	8.9
Catahoula	3,843	356	8.5	3,781	376	9.0	3,910	440	10.1
Claiborne	6,028	505	7.7	6,051	559	8.5	6,169	574	8.5
Concordia (Natchez, MS-LA) ¹	6,293	653	9.4	6,236	755	10.8	6,647	711	9.7
East Carroll	2,300	367	13.8	2,316	389	14.4	2,547	461	15.3
Evangeline	11,695	938	7.4	11,660	1,004	7.9	11,674	1,089	8.5
Franklin	6,601	740	10.1	6,483	776	10.7	7,010	853	10.8
Iberia (New Iberia) ¹	30,753	2,080	6.3	30,763	2,273	6.9	31,105	2,461	7.3
Jackson (Ruston) ¹	5,887	481	7.6	5,863	533	8.3	6,152	431	6.5
Jefferson Davis (Jennings) ¹	13,404	767	5.4	13,235	835	5.9	13,772	910	6.2
La Salle	6,660	343	4.9	6,573	375	5.4	6,502	402	5.8
Lincoln (Ruston) ¹	17,485	1,445	7.6	17,413	1,584	8.3	18,271	1,662	8.3
Madison (Tallulah) ¹	3,851	416	9.7	3,864	438	10.2	4,150	474	10.3
Morehouse (Bastrop) ¹	9,642	1,417	12.8	9,543	1,344	12.3	9,818	1,562	13.7
Natchitoches (Natchitoches) ¹	15,736	1,319	7.7	15,555	1,351	8.0	16,167	1,410	8.0
Red River	3,484	274	7.3	3,459	284	7.6	3,420	332	8.8
Richland	8,062	785	8.9	8,088	818	9.2	8,455	940	10.0
Sabine	8,932	567	6.0	8,833	625	6.6	9,032	654	6.8
St. James	8,111	947	10.5	8,192	1,021	11.1	8,500	1,066	11.1
St. Landry (Opelousas, Eunice) ¹	34,882	2,694	7.2	34,522	2,929	7.8	35,534	3,124	8.1
St. Mary (Morgan City) ¹	20,578	1,742	7.8	20,713	1,882	8.3	21,085	2,065	8.9
Tangipahoa (Hammond) ¹	48,627	4,024	7.6	47,965	4,403	8.4	49,533	4,736	8.7
Tensas	1,607	226	12.3	1,607	240	13.0	1,716	297	14.8
Vermilion (Abbeville) ¹	22,338	1,380	5.8	22,227	1,454	6.1	22,597	1,650	6.8
Vernon (Fort Polk South) ¹	20,131	1,293	6.0	20,067	1,813	8.3	19,717	1,427	6.7
Washington (Bogalusa) ¹	13,726	1,324	8.8	13,519	1,449	9.7	14,178	1,507	9.6
Webster (Mindon) ¹	18,141	1,329	6.8	17,969	1,484	7.6	18,667	1,609	7.9
West Carroll	3,519	544	13.4	3,551	559	13.6	3,730	631	14.5
Winn	6,069	483	7.4	6,027	501	7.7	6,359	546	7.9

¹In addition to the eight (8) Metropolitan Statistical Areas (MSAs) in Louisiana, there are seventeen (17) Micropolitan Statistical Areas (MCs): Jackson and Lincoln Parishes combine to constitute one MC area. Civilian Labor Force can be derived by adding employed and unemployed. For related information or data, please visit: www.bls.gov/lau/home.htm.

LOUISIANA - PRIVATE EMPLOYMENT (Not Seasonally Adjusted)

	Avg. Weekly Earnings (\$)			Avg. Weekly Hours			Avg. Hourly Earnings (\$)		
	NOV	OCT	NOV	NOV	OCT	NOV	NOV	OCT	NOV
	2011	2011	2010	2011	2011	2010	2011	2011	2010
Total Private	765.20	781.26	718.01	36.3	36.8	36.3	21.08	21.23	19.78
Goods-Producing	1,040.72	1,056.94	979.86	42.6	43.0	42.0	24.43	24.58	23.33
Private Service-Providing	694.69	709.28	651.93	34.7	35.2	34.9	20.02	20.15	18.68
Construction	938.95	950.53	906.64	41.4	41.8	41.8	22.68	22.74	21.69
Manufacturing	1,052.37	1,069.57	968.01	42.4	42.8	41.0	24.82	24.99	23.61
Trade, Transportation, and Utilities	725.19	734.08	671.46	36.7	37.0	37.2	19.76	19.84	18.05
Financial Activities	736.78	773.76	694.31	37.4	39.0	35.9	19.70	19.84	19.34
Professional and Business Services	956.89	990.12	989.02	38.6	39.4	40.6	24.79	25.13	24.36
Education and Health Services	650.06	650.02	553.99	33.2	33.3	32.8	19.58	19.52	16.89
Leisure and Hospitality	320.39	323.87	324.19	26.5	26.7	26.4	12.09	12.13	12.28

METROPOLITAN STATISTICAL AREA (MSA) PRIVATE EMPLOYMENT (Not Seasonally Adjusted)

	Avg. Weekly Earnings (\$)			Avg. Weekly Hours			Avg. Hourly Earnings (\$)		
	NOV	OCT	NOV	NOV	OCT	NOV	NOV	OCT	NOV
	2011	2011	2010	2011	2011	2010	2011	2011	2010
Alexandria	892.80	879.32	627.06	38.4	38.0	36.1	23.25	23.14	17.37
Baton Rouge	742.86	770.45	756.49	34.6	35.1	36.3	21.47	21.95	20.84
Houma	938.31	961.05	818.50	43.3	43.0	40.4	21.67	22.35	20.26
Lafayette	760.88	779.45	729.64	36.9	37.6	37.0	20.62	20.73	19.72
Lake Charles	873.62	886.50	820.48	38.0	39.4	40.2	22.99	22.50	20.41
Monroe	561.21	534.95	576.80	32.8	32.9	35.0	17.11	16.26	16.48
New Orleans	891.08	915.18	830.15	36.7	37.4	36.7	24.28	24.47	22.62
Shreveport	652.86	665.28	642.94	35.1	36.0	34.0	18.60	18.48	18.91

AVERAGE HOURS AND EARNINGS FOR PRODUCTION WORKERS IN MANUFACTURING AND SELECTED NONMANUFACTURING INDUSTRIES (Not Seasonally Adjusted)

	Avg. Weekly Earnings (\$)			Avg. Weekly Hours			Avg. Hourly Earnings (\$)		
	NOV	OCT	NOV	NOV	OCT	NOV	NOV	OCT	NOV
	2011	2011	2010	2011	2011	2010	2011	2011	2010
Louisiana									
Mining & Logging	1,193.69	1,225.76	963.63	47.2	47.4	41.5	25.29	25.86	23.22
Manufacturing	838.83	863.14	872.17	41.2	41.9	42.4	20.36	20.60	20.57
Durable Goods	941.02	932.14	879.80	44.2	44.6	42.4	21.29	20.90	20.75
Nondurable Goods	734.19	792.17	866.15	38.1	39.1	42.5	19.27	20.26	20.38
New Orleans MSA									
Ship and Boat Building	1,022.95	894.47	823.50	40.1	39.3	37.5	25.51	22.76	21.96

The 108,480 production workers in all manufacturing earned an average of \$838.83 per week in Nov. 2011. Average weekly hours were 41.2, and average hourly earnings were \$20.36.

LOUISIANA UNEMPLOYMENT INSURANCE by CLAIMANT'S PARISH of RESIDENCE

WEEK ENDING - Nov. 12, 2011

RLMA/PARISH	INITIAL CLAIMS	WEEKS CLAIMED	RLMA/PARISH	INITIAL CLAIMS	WEEKS CLAIMED	RLMA/PARISH	INITIAL CLAIMS	WEEKS CLAIMED
RLMA 1	701	10,568	RLMA 4	361	4,274	RLMA 7	407	4,893
JEFFERSON	290	4,038	ACADIA	15	334	BIENVILLE	16	165
ORLEANS	209	3,772	EVANGELINE	21	203	BOSSIER	57	701
PLAQUEMINES	11	143	IBERIA	47	565	CADDO	158	2,368
ST. BERNARD	6	3	LAFAYETTE	105	1,314	CLAIBORNE	3	139
ST. CHARLES	28	393	ST. LANDRY	73	729	DESOTO	18	188
ST. JAMES	23	324	ST. MARTIN	25	332	LINCOLN	32	371
ST. JOHN	29	547	ST. MARY	33	481	NATCHITOCHEs	72	364
ST. TAMMANY	105	1,348	VERMILION	42	316	RED RIVER	9	75
						SABINE	11	118
						WEBSTER	31	404
RLMA 2	657	8,189	RLMA 5	186	2,155	RLMA 8	312	3,076
ASCENSION	61	744	ALLEN	11	172	CALDWELL	7	89
E. BATON ROUGE	298	3,785	BEAUREGARD	19	277	EAST CARROLL	8	104
EAST FELICIANA	11	179	CALCASIEU	141	1,541	FRANKLIN	28	172
IBERVILLE	35	401	CAMERON	5	13	JACKSON	18	142
LIVINGSTON	87	875	JEFF. DAVIS	10	152	MADISON	9	115
POINTE COUPEE	20	211	RLMA 6	174	2,342	MOREHOUSE	45	380
ST. HELENA	3	79	AVOUELLES	30	292	OUACHITA	136	1,498
TANGIPAHOA	93	1,256	CATAHOULA	7	88	RICHLAND	24	223
WASHINGTON	23	351	CONCORDIA	12	156	TENSAS	7	51
W. BATON ROUGE	24	233	GRANT	22	135	UNION	14	174
WEST FELICIANA	2	75	LASALLE	4	80	WEST CARROLL	16	128
RLMA 3	112	1,151	RAPIDES	80	1,066			
ASSUMPTION	26	227	VERNON	11	396			
LAFOURCHE	38	407	WINN	8	129			
TERREBONNE	48	517						

RLMA = REGIONAL LABOR MARKET AREA

THE ABOVE FIGURES INCLUDE REGULAR UNEMPLOYMENT INSURANCE (UI), UNEMPLOYMENT CLAIMS for FEDERAL EMPLOYEES (UCFE), and UNEMPLOYMENT CLAIMS for EX-SERVICE MEMBERS (UCX) DATA ONLY.

Labor Market Questions and Answers!

Be Alert for LWC's Occupational Wage Survey

The Louisiana Workforce Commission in cooperation with the U.S. Bureau of Labor Statistics (BLS) is sending out a survey to selected employers called the Occupational Employment Statistics (OES) Wage Survey. The purpose of the survey is to gather statistical information about wage ranges paid to workers and staffing patterns of industries comprising Louisiana's economy. It is extremely important that all Louisiana employers who were selected to participate in this year's Occupational Employment and Wage Survey complete and return the report for their perspective firm as soon as possible. Through this survey, employers will have an opportunity to have a direct impact on local governmental programs and influence the future economic occupational projections for the state. All employer responses are treated confidentially.

Glossary & Technical Notes

Average Hourly Earnings/Average Weekly Earnings/ Average Weekly Hours (CES/BLS) - average total money earnings, in the survey week (i.e., the week that includes the twelfth of the month), of production workers plus nonsupervisory workers not in production, including overtime, paid vacation and sick leave.

Civilian Labor Force - that portion of the population, age sixteen or older, which is employed or unemployed and actively seeking employment during the reference week of the twelfth of the month.

Employed - the members of the labor force who worked for pay or profit, or had a job from which they were temporarily absent because of illness, vacation, labor dispute, or other reasons not reflecting a shortage of work, or who worked fifteen hours or more as unpaid workers in an enterprise operated by a member of the family.

Unemployed - the members of the labor force who did not work but were seeking work or were awaiting recall from layoffs or the beginning of a new job within thirty days.

Unemployment Rate - the number of unemployed persons expressed as a percentage of the labor force.

Continued Claim - each week claimed subsequent to the filing of the initial claim for a week of unemployment compensation.

Current Employment Statistics (CES) - estimates of nonfarm employment and production workers hours and earnings by industry. They are produced as part of a nationwide program, in cooperation with the Bureau of Labor Statistics (BLS), for the state and each metropolitan statistical area (MSA) from a sample of employing establishments.

Current Population Survey (CPS) - a monthly household survey of the U.S. population conducted for the Bureau of Labor Statistics (BLS) by the Bureau of Census, of 56,000 selected households. Respondents are interviewed to obtain information on the employment status of each household member age 16 and over, during the reference week of the twelfth.

Durable Goods - items with a normal life expectancy of three years or more. Automobiles, furniture, household appliances, and mobile homes are examples.

Extended Layoff Event - Fifty or more initial claims for unemployment insurance benefits from an establishment during a 5-week period, with at least 50 workers separated for more than 30 days.

Initial Claims - a new claim, filed to open a claim for unemployment compensation.

Metropolitan Statistical Area (MSA) - a geographical area comprised of a parish generally containing a central city (or twin cities) of 50,000 inhabitants or more and contiguous parishes that are socially and economically integrated with the central city.

Micropolitan Statistical Area (MC) - a geographical area comprised of a parish containing a central city of at least 10,000 but less than 50,000 inhabitants and contiguous parishes that are socially and economically integrated with the central city.

NAICS (North American Industry Classification System) - an industry classification system that groups establishments into industries based on the activities in which they are primarily engaged.

Nonfarm Employment - employment by place of work that does not include the self employed, unpaid family workers, domestics, or agriculture workers. All estimates of nonfarm employment in this publication are in cooperation with the U.S. Department of Labor Bureau of Labor Statistics and include all full-time and part-time workers who were employed during the pay period including the twelfth of the month.

Nondurable Goods - items that generally last for only a short period of time (less than three years). Food, beverages, apparel, and gasoline are common examples.

Seasonally Adjusted - monthly data that is adjusted to minimize the changes in any time series which result from normal annual occurrences such as Christmas, summer vacations, and weather patterns.

Separation - The release of persons from an employer as part of a mass layoff event. Such releases involve both persons subject to recall and those who are terminated by the establishment.

Subsector - refers to the three-digit NAICS code, which will fall under the particular sector. Example: If Manufacturing (31-33) is the industry sector, then Food manufacturing (311), Paper manufacturing (322), Chemical manufacturing (325), Transportation equipment manufacturing (336), are some of the subsectors of manufacturing.

Supersector - refers to these five categories: Total Nonfarm, Total Private, Goods-Producing, Service-Providing, and Private Service-Providing.

Summary Industry Sector - a combination of industry sectors. A summary sector may or may not be published. The summary industry sectors are Mining & Logging; Construction; Manufacturing; Trade, Transportation, & Utilities; Information; Financial Activities; Professional & Business Services; Education & Health Services; Leisure & Hospitality; Other Services; and Government.

Industry Sector - 20 industry sectors based on two-digit NAICS code. They are Agriculture, Forestry, Fishing and Hunting (11), Mining (21), Utilities (22), Construction (23), Manufacturing (31-33), Wholesale Trade (42), Retail Trade (44-45), Transportation and Warehousing (48-49), Information (51), Finance and Insurance (52), Real Estate and Rental and Leasing (53), Professional and Technical Services (54), Management of Companies and Enterprises (55), Administrative and Waste Services (56), Educational Services (61), Health Care and Social Assistance (62), Arts, Entertainment, and Recreation (71), Accommodation and Food Services (72), Other Services (81), and Public Administration (92).

Constraints of the monthly civilian labor force and nonfarm employment estimates:

The civilian labor force estimates are derived by a monthly survey of approximately 750 households throughout Louisiana following the Bureau of Labor Statistics (BLS) methodology. The US Census Bureau conducts the survey by calling randomly selected households and providing BLS with survey results. Households are asked for the number of residents who are sixteen and over and whether they were working or actively looking for work during the week of the twelfth of the month. Responses to these questions become part of the formula to determine the number of people employed and the number of individuals unemployed for the state, MSAs, and each parish every month.

The nonfarm employment estimates are derived from responses received from the monthly BLS survey of 2,757 businesses across the state surveyed directly by this agency, and an additional 2,500 businesses that respond directly to BLS with their employment data. Responses capture employment activity during the twelfth of each month. This survey relies on responses from these businesses to produce industry employment levels for the state and all metropolitan statistical areas.

Both data sets are comparable with estimates for the U.S., all 50 states, and 270 metropolitan areas across the U.S.

LABOR MARKET INFORMATION WEB LINKS

Civilian Labor Force - LAUS (Local Area Unemployment Statistics) –

Employment, Unemployment and Unemployment Insurance Rate

LA <http://www.voshost.com/altentry.asp?action=lmiguest>

Left menu: Historical Data Analysis – Employment and Wage Data – Labor Force Data – Labor Force Employment and Unemployment (LAUS)

States <http://data.bls.gov/cgi-bin/dsrv?la>

US <http://data.bls.gov/pdq/querytool.jsp?survey=ln>

Consumer Price Index (US) <http://data.bls.gov/cgi-bin/surveymost?cu>

Download Louisiana Workforce Commission’s Labor Market Information Products

LA http://www.laworks.net/Downloads/Downloads_LMI.asp

Employment and Wage Data – Quarterly Census of Employment and Wages (QCEW)

LA <http://www.voshost.com/altentry.asp?action=lmiguest>

Left menu: Historical Data Analysis – Employment and Wage Data – Industry Data – Quarterly Census of Employment and Wages (QCEW)

States & US <http://data.bls.gov/cgi-bin/dsrv?en>

Mass Layoff Statistics (MLS) <http://stats.bls.gov/mls/>

NAICS (North American Industry Classification System) Codes Look-Up Table

<http://www.census.gov/eos/www/naics>

Nonfarm Employment, Hours and Earnings - CES (Current Employment Statistics)

LA <http://www.voshost.com/altentry.asp?action=lmiguest>

Left menu: Historical Data Analysis – Employment and Wage Data – Industry Data – Current Employment Statistics (CES) – select Show Earnings Data under table

States <http://data.bls.gov/cgi-bin/dsrv?sm>

US <http://data.bls.gov/cgi-bin/dsrv?ce>

Unemployment Insurance Claimants Data (by Occupation) - Unemployment Insurance (UI)

LA <http://www.voshost.com/altentry.asp?action=lmiguest>

Left menu: Historical Data Analysis – Employment and Wage Data – Labor Force Data – Unemployment Insurance Claimants

Unemployment Insurance Claims Data (by Region, Parish, Industry) - UI

LA http://www.laworks.net/LaborMarketInfo/LMI_UIClaimsReportMenu.asp

States & US <http://ows.doleta.gov/unemploy/claims.asp>

Unemployment Rates for all States - LAUS

States <http://www.bls.gov/web/laumstrk.htm>



Office of Occupational Information Services
Research & Statistics Division
Post Office Box 94094
Baton Rouge, LA 70804-9094

Data for: 11/2011



Workforce At A Glance is published monthly by the Louisiana Workforce Commission. The material in this publication is not copyrighted and may be reproduced; however, the LWC would appreciate credit for the material used and a copy of the reprint.

LMI Staff:

Patty Granier, Manager
Ramona Robichaux, Supervisor
Ronald Smith, Layout and Design
Karen Clark, Jonathan Helis

Contributors:

Natalie Foster-Lawrence, Mark Jones, Tara Robinson,
Helen Hilliard, and Karen Clark

Contact Us:

Phone (225) 342-3141; Fax (225) 219-7759
Toll Free (888) 302-7662;
Email OOIS@ldol.state.la.us

Bobby Jindal, Governor
State of Louisiana

Curt Eysink, Executive Director
Louisiana Workforce Commission

Raj Jindal,
Information Technology Director

Visit our website:
www.laworks.net