

Louisiana Workforce

at a glance

Release Date: June 23, 2017

Data For: May 2017

<http://www.laworks.net>

In This Issue

- 2 Economic Comparison
- 3-4 NSA State & Area Employment
- 5-8 Data Trends (Graphs)
- 9-15 Nonfarm Employment
- 16-17 Unemployment Rates & Civilian Labor Force
- 18 Average Hours & Earnings
- 19 Pie Chart of Nonfarm Jobs by NAICS Supersector
- 20-21 Glossary, Data Constraints, Downloads & Web Links

Louisiana's seasonally adjusted nonfarm employment was estimated at 1,983,200 for May 2017. The figure represents an increase of 10,500 jobs over the month and an increase of 9,400 jobs over the year. Private sector employment was estimated at 1,659,100, an increase of 9,100 jobs over the month and a gain of 12,600 jobs over the year.

Over the month the largest gain was seen in the construction sector which added 5,000 jobs, the largest gain for the series in the month of May. Professional and business services rose by 2,000 jobs as the administrative and support and waste management and remediation subsector added 1,400 jobs from April. Leisure and hospitality increased by 1,900 jobs as accommodation and food services increased by 1,800 jobs. Government added 1,400 jobs as local government added 1,700, while state government lost 500 jobs. Other services rose by 900 jobs and has shown an over-the-month gain in four of the last six months. Manufacturing showed an increase of 300 jobs as durable goods manufacturing added 600 jobs. Both the trade, transportation, and utilities sector and the education and health services sector showed small increases of 200 jobs. Mining and logging showed the largest decline over the month, losing 1,000 jobs. Mining and logging has seen a loss over the month in 28 of the last 31 months. Both the information sector and the financial activities sector lost 200 jobs from April.

Over the year the largest gain was seen in the construction sector which added 12,600 jobs. Construction has seen over-the-year gains for eight consecutive months. The education and health services sector rose by 7,000 jobs over the year, with the health care and social assistance subsector gaining 5,100 jobs. Education and health services has added jobs over the year every month beginning in October 2006. Professional and business services added 2,800 jobs and has seen a gain over the year in three of the last four months. Other services added 1,900 jobs for its eighth straight over-the-year increase. The largest decline over the year was seen in the trade, transportation, and utilities sector which lost 5,000 jobs for its 19th straight decrease. Both the retail trade subsector and the transportation, warehousing, and utilities subsector lost 2,200 jobs over the year. Mining and logging sector fell by 4,200 jobs. The series has lost jobs over the year for 29 straight months. Government fell by 3,200 jobs with local government losing 3,300 jobs. Manufacturing fell by 1,500 jobs, its 27th straight over-the-year loss, as the durable goods manufacturing subsector declined by 3,100 jobs. Information decreased by 600 jobs for its 16th consecutive over-the-year loss. Leisure and hospitality showed 400 fewer jobs than last year, its sixth consecutive over-the-year loss. The financial activities sector showed no change over the year.

The May 2017 preliminary seasonally adjusted unemployment rate for Louisiana decreased to 5.7 percent from the April 2017 rate of 5.8 percent. The national unemployment rate for May of 2017 decreased to 4.3 percent from the April rate of 4.4 percent. Total unemployment in the state for May was 121,173. The state civilian labor force decreased to 2,118,719, with a decrease in total employment to 1,997,546.

Seasonally Adjusted	United States	Louisiana
Civilian Labor Force	MAY 2017	MAY 2017
Labor Force	159,784,000	2,118,719
Employed	152,923,000	1,997,546
Unemployed	6,861,000	121,173
Unemployment Rate	4.3	5.7
Nonfarm Wage and Salary Employment	MAY 2017	MAY 2017
Total Nonfarm	146,135,000	1,983,200
Mining and Logging	706,000	34,100
Construction	6,881,000	151,700
Manufacturing	12,398,000	135,000
Trade, Transportation, and Utilities	27,346,000	383,600
Information	2,723,000	22,500
Financial Activities	8,428,000	92,500
Professional and Business Services	20,644,000	214,000
Education and Health Services	23,069,000	316,600
Leisure and Hospitality	15,892,000	232,200
Other Services	5,744,000	76,900
Government	22,304,000	324,100

All Employees Average Hours & Earnings

(Not Seasonally Adjusted)

Construction	MAY 2017 United States	MAY 2017 Louisiana
Average Weekly Earnings	\$ 1,128.42	\$ 1,073.53
Average Weekly Hours	39.4	41.1
Average Hourly Wages	\$ 28.64	\$ 26.12
Manufacturing		
Average Weekly Earnings	\$ 1,076.11	\$ 1,087.53
Average Weekly Hours	40.7	42.3
Average Hourly Wages	\$ 26.44	\$ 25.71

Louisiana Unemployment Insurance Activities

Claims	MAY 2017
Initial New & Renewals	10,334
Continued Weekly Intrastate Only	68,947
Insured Unemployment Rate	1.1

United States Consumer Price Index

	MAY 2017
All Urban Consumers	244.7



The civilian labor force and nonfarm **estimates** are prepared according to Bureau of Labor Statistics (BLS) methodology and are comparable with the U.S. and other states' data. For more information, go to page 20.

Economic Comparison

Seasonally Adjusted	United States			Louisiana		
	MAY 2017	APR 2017	MAY 2016	MAY 2017	APR 2017	MAY 2016
Civilian Labor Force						
Labor Force	159,784,000	160,213,000	158,510,000	2,118,719	2,121,129	2,127,498
Employed	152,923,000	153,156,000	151,058,000	1,997,546	1,998,157	1,994,792
Unemployed	6,861,000	7,056,000	7,451,000	121,173	122,972	132,706
Unemployment Rate	4.3	4.4	4.7	5.7	5.8	6.2
Nonfarm Wage and Salary Employment						
Total Nonfarm	146,135,000	145,997,000	143,869,000	1,983,200	1,972,700	1,973,800
Mining and Logging	706,000	700,000	674,000	34,100	35,100	38,300
Construction	6,881,000	6,870,000	6,690,000	151,700	146,700	139,100
Manufacturing	12,398,000	12,399,000	12,335,000	135,000	134,700	136,500
Trade, Transportation, and Utilities	27,346,000	27,352,000	27,187,000	383,600	383,400	388,600
Information	2,723,000	2,725,000	2,739,000	22,500	22,700	23,100
Financial Activities	8,428,000	8,417,000	8,263,000	92,500	92,700	92,500
Professional and Business Services	20,644,000	20,606,000	20,022,000	214,000	212,000	211,200
Education and Health Services	23,069,000	23,022,000	22,544,000	316,600	316,400	309,600
Leisure and Hospitality	15,892,000	15,861,000	15,561,000	232,200	230,300	232,600
Other Services	5,744,000	5,732,000	5,667,000	76,900	76,000	75,000
Government	22,304,000	22,313,000	22,187,000	324,100	322,700	327,300

All Employees Average Hours & Earnings

Construction	United States (Not Seasonally Adjusted)			Louisiana (Not Seasonally Adjusted)		
	MAY 2017	APR 2017	MAY 2016	MAY 2017	APR 2017	MAY 2016
Average Weekly Earnings	\$ 1,128.42	\$ 1,101.26	\$ 1,100.40	\$ 1,073.53	\$ 1,003.31	\$ 1,084.54
Average Weekly Hours	39.4	38.6	39.3	41.1	38.5	42.2
Average Hourly Wages	\$ 28.64	\$ 28.53	\$ 28.00	\$ 26.12	\$ 26.06	\$ 25.70
Manufacturing						
Average Weekly Earnings	\$ 1,076.11	\$ 1,080.70	\$ 1,060.39	\$ 1,087.53	\$ 1,088.26	\$ 1,051.54
Average Weekly Hours	40.7	40.4	40.8	42.3	41.6	40.6
Average Hourly Wages	\$ 26.44	\$ 26.75	\$ 25.99	\$ 25.71	\$ 26.16	\$ 25.90

Louisiana Unemployment Insurance Activities

Claims	MAY 2017	APR 2017	MAY 2016	% Change From	
				APR 2017	MAY 2016
Initial New & Renewals	10,334	8,137	14,337	27.0	-27.9
Continued Weekly Intrastate Only	68,947	60,226	69,330	14.5	-0.6
Insured Unemployment Rate*	1.1	1.1	1.2	0.0	-5.9

*Insured unemployment rate is for the week including the 12th of the month.

United States Consumer Price Index (Not Seasonally Adjusted)

	May 2017	% Change From:		Apr 2017	% Change From:	
	Index	Prior Month	Prior Year	Index	Prior Month	Prior Year
All Urban Consumers	244.7	0.1	1.9	244.5	0.3	2.2

STATEWIDE

Louisiana's total nonfarm not seasonally adjusted employment was estimated at 1,987,100 for May 2017. The estimate represents a gain of 12,300 jobs over the month and an increase of 6,300 jobs from May 2016. Despite this annual gain, the series still has lost jobs over-the-year in 19 of the last 21 months.

The total private employment figure was estimated at 1,660,500 in May 2017. Private sector employment showed an over-the-month increase of 11,100 jobs and a gain of 10,000 jobs from May 2016. This series has seen over-the-year losses in 17 of the last 19 months.

Over the month the largest increase was seen in the leisure and hospitality sector which added 4,200 jobs. The food services and drinking places subsector added 2,400 jobs. Construction rose by 3,400 jobs as heavy and civil engineering construction gained 2,400 jobs. Professional and business services added 1,600 jobs as the administrative and support and waste management and remediation services subsector gained 2,100 jobs. Professional and business services has added jobs over the month in three of the last four months. Both the other services sector and the government sector added 1,200 jobs from April. Other services has added jobs in three of the last four months. Local government added 2,000 jobs while state government fell by 1,100. Manufacturing rose by 900 jobs as durable goods manufacturing gained 1,000 jobs. Manufacturing has gained jobs in five of the last six months. . The education and health services sector gained 500 jobs. Trade transportation and utilities added 100 jobs despite the retail trade subsector losing 400 jobs. The largest monthly loss occurred in the mining and logging sector which lost 600 jobs from April. Mining and logging has lost jobs in eight of the last 10 months. Both the information sector and the financial activities sector lost 100 jobs from April.

The largest over-the-year gain was seen in the construction sector which added 12,100 jobs. The construction estimate of 149,800 is a series record for employment and is the fifth consecutive month with an over-the-year gain, led by a 8,800 job gain in construction of buildings. Heavy and civil engineering construction also added 7,100 jobs. Education and health services added 6,500 jobs over the year and has added jobs over the year every month beginning with the October 2006 figure. Health care and social assistance was responsible for 4,800 of the 6,500 jobs gained, while education services rose by 1,700. Other services increased by 2,100 jobs. Professional and business services added 1,300 jobs while financial activities showed no change over the year. The largest decline over the year was seen in the trade, transportation, and utilities sector, which declined by 4,600 jobs, its 20th straight over-the-year loss. The transportation, warehousing, and utilities subsector lost 2,100 jobs. The mining and logging sector declined by 4,100 jobs from last year. Mining and logging has lost jobs over the year for 29 consecutive months. Government showed 3,700 fewer jobs than last year as the local government subsector lost 3,900 jobs. The government figure is the lowest for May in series history and the 12th straight over-the-year loss. Manufacturing lost 1,700 jobs with durable goods manufacturing losing 2,900 jobs. Information lost 900 jobs while leisure and hospitality fell by 700 jobs over the year, with food services and drinking places losing 600 jobs.

ALEXANDRIA

Total nonfarm employment for the Alexandria MSA was estimated at 63,000 for May 2017. This estimate shows a loss of 100 jobs over the month and a loss of 900 jobs over the year. The MSA has dropped jobs over the year for 10 consecutive months. Trade, transportation, and utilities lost 300 jobs over the year.

BATON ROUGE

Total nonfarm employment for the Baton Rouge MSA was estimated at 409,700 for May 2017. The estimate shows a loss of 1,300 jobs over the month but an increase of 1,900 jobs over the year. Over the month, construction added 700 jobs while professional and business services lost 900 and trade, transportation, and utilities fell by 700. Over the year, construction saw a gain of 3,400 jobs and education and health services increased by 1,600 jobs. Trade, transportation, and utilities lost 1,900 jobs from last year as retail trade declined by 1,500 jobs.

HAMMOND

The Hammond MSA total nonfarm employment was estimated at 45,500 for May 2017. This figure shows a gain of 300 jobs over the month and a gain of 600 jobs over the year. Goods producing employment added 200 jobs over the month and gained 200 jobs over the year. Service providing employment gained 100 jobs over the month and 400 jobs over the year.

HOUMA

Total nonfarm employment in the Houma MSA was estimated at 85,600 for May 2017. This shows a gain of 200 jobs over the month but a decline of 4,200 jobs over the year. Trade, transportation, and utilities lost 3,200 jobs over the year. Mining and logging lost 600 jobs over the year, its 28th consecutive month with an over-the-year loss.

LAFAYETTE

Total nonfarm employment for the Lafayette MSA was estimated at 200,800 for May 2017. This shows a gain of 800 jobs over the month but a loss of 2,400 jobs over the year. The MSA has lost jobs over the year for 28 consecutive months. Over the month, manufacturing added 300 jobs. Mining and logging lost 1,100 jobs over the year for its 29th consecutive month with an over-the-year loss. Professional and business services lost 400 jobs, its 27th consecutive loss. Manufacturing lost 300 jobs from last May, its 31st straight month with an over-the-year decline.

LAKE CHARLES

Total nonfarm employment for the Lake Charles MSA was estimated at 113,100 for May 2017. This shows a gain of 1,500 jobs over the month and a gain of 5,400 jobs over the year. It is the 71st consecutive month with an over-the-year increase. The construction sector showed a gain of 700 jobs over the month and added 4,500 jobs over the year. This is construction's 20th consecutive month with an over-the-year increase. Trade, transportation, and utilities added 800 jobs over the year.

MONROE

Total nonfarm employment for the Monroe MSA was estimated at 79,800 for May 2017. This shows no change over the month and a gain of 400 jobs over the year. Leisure and hospitality added 200 jobs over the year. Government lost 500 jobs over the year, with state government losing 400 jobs

NEW ORLEANS

Total nonfarm employment for the New Orleans MSA was estimated at 578,500 for May 2017. This shows a gain of 500 jobs over the month but a loss of 1,600 jobs over the year. Over the month, leisure and hospitality added 1,700 jobs and professional and business services added 500 jobs, while education and health services lost 1,100 jobs. Over the year, education and health services added 2,200 jobs while construction rose by 1,100. Government lost 4,900 jobs over the year as local government declined by 4,200 jobs. Trade, transportation, and utilities decreased by 1,100 jobs over the year.

SHREVEPORT

Total nonfarm employment for the Shreveport MSA was estimated at 179,500 for May 2017. This shows a gain of 400 jobs over the month but a loss of 3,000 jobs over the year. This is the 25th consecutive month with an over-the-year loss. Over the month, leisure and hospitality gained 500 jobs. Over the year government declined by 1,300 jobs, while professional and business services fell by 800 jobs and mining and logging lost 600 jobs.

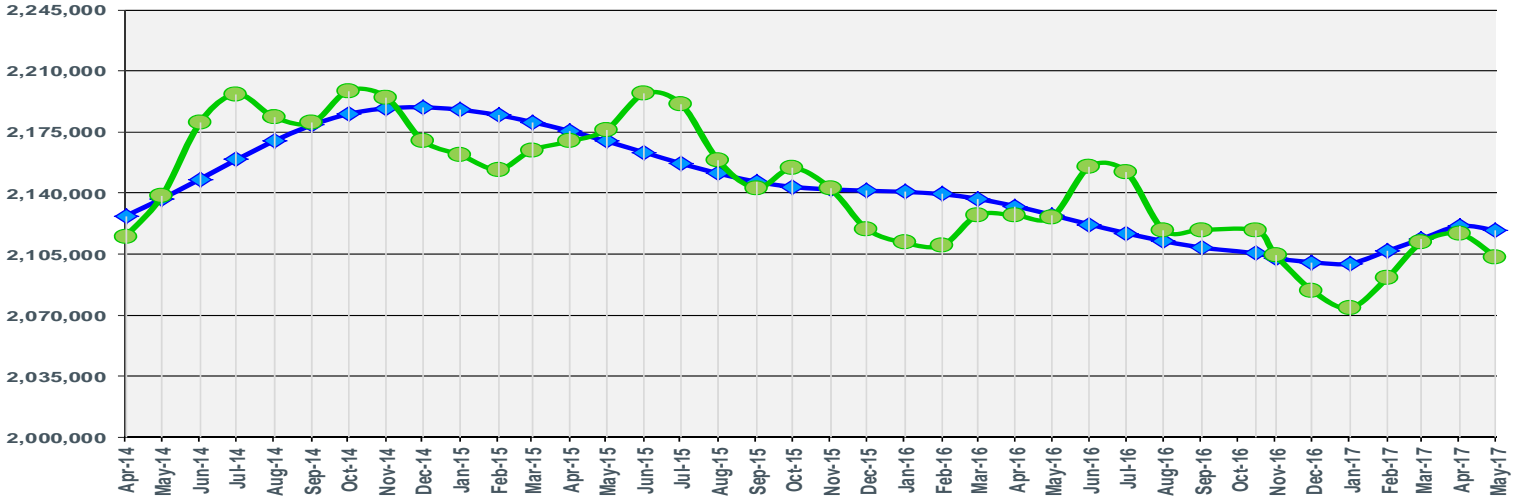
May 2017

Seasonally Adjusted
2,118,719
Over the Month: -2,410
Over the Year: -8,779

Louisiana Civilian Labor Force

Not Seasonally Adjusted
2,103,477
Over the Month: -13,142
Over the Year: -22,661

Seasonally Adjusted Not Seasonally Adjusted



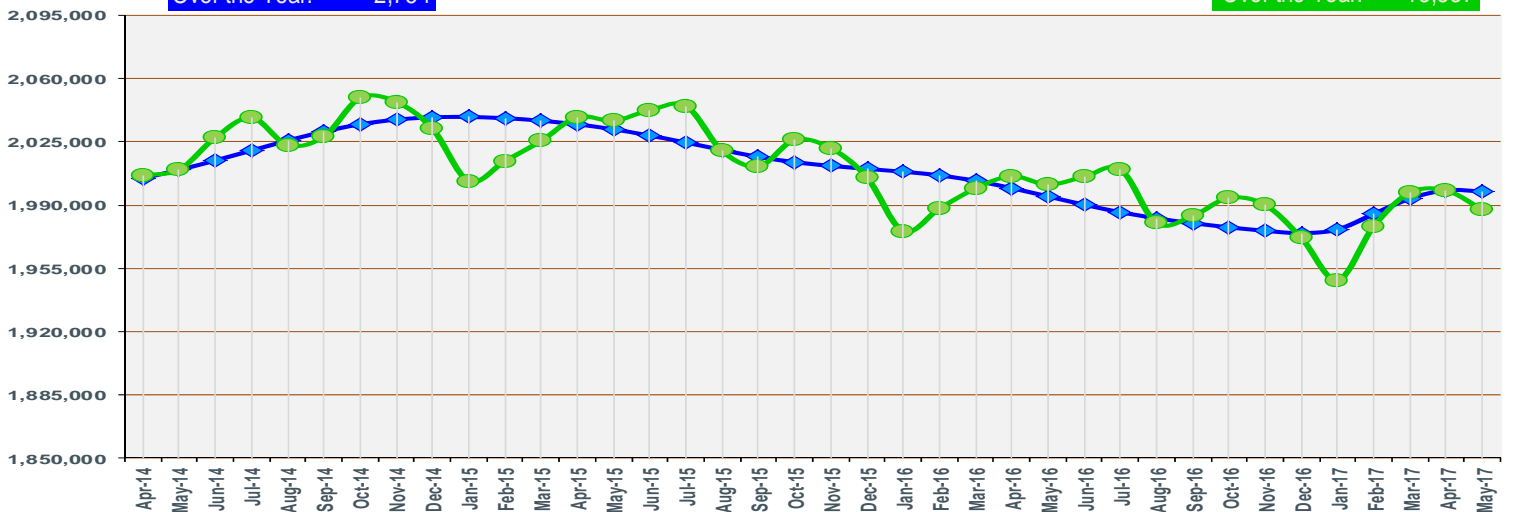
May 2017

Seasonally Adjusted
1,997,546
Over the Month: -611
Over the Year: 2,754

Louisiana Civilian Labor Force Employment

Not Seasonally Adjusted
1,987,476
Over the Month: -10,560
Over the Year: -13,837

Seasonally Adjusted Not Seasonally Adjusted



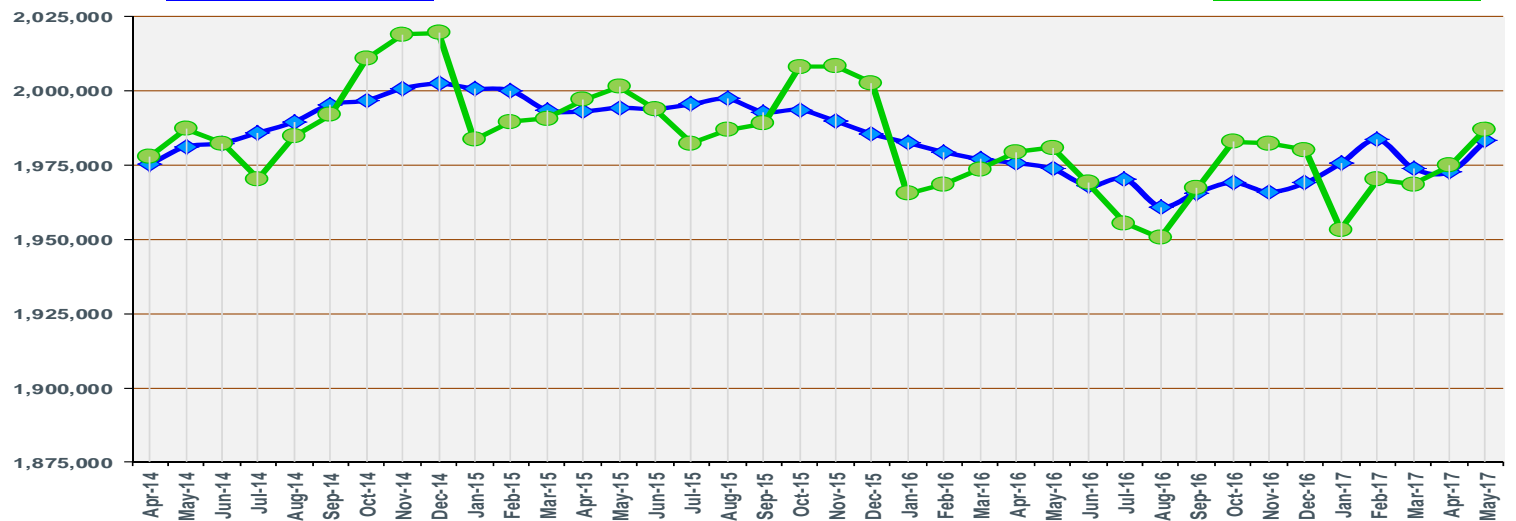
May 2017

Seasonally Adjusted
1,983,200
Over the Month: 10,500
Over the Year: 9,400

Louisiana Nonfarm Employment

Not Seasonally Adjusted
1,987,100
Over the Month: 12,300
Over the Year: 6,300

Seasonally Adjusted Not Seasonally Adjusted

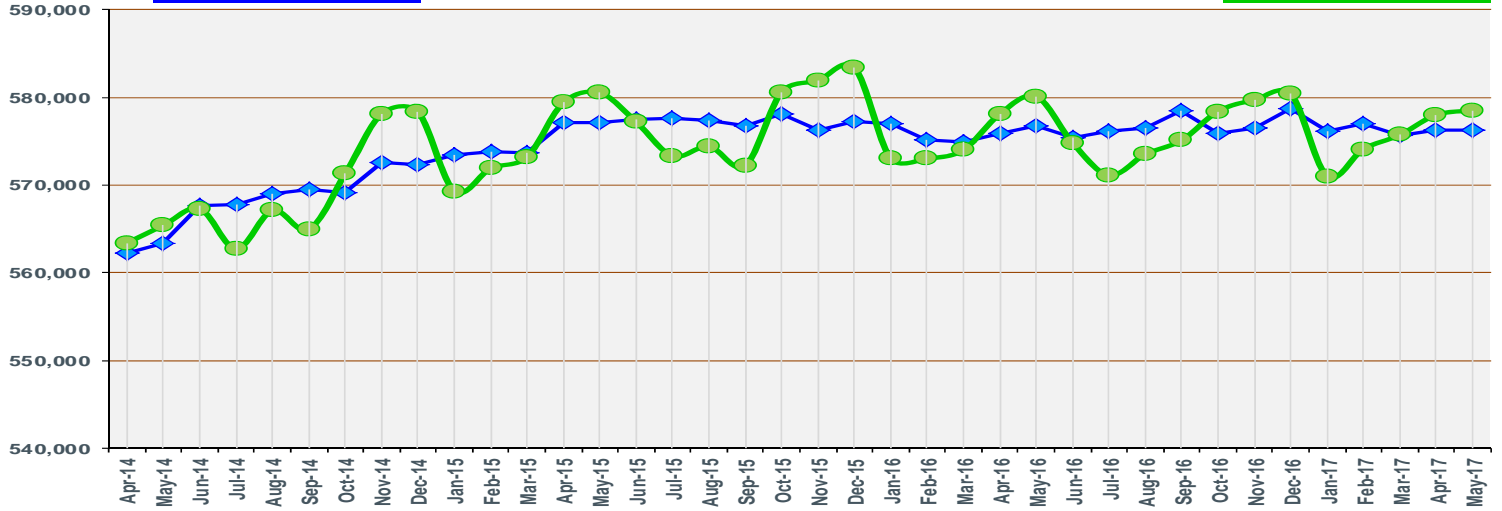
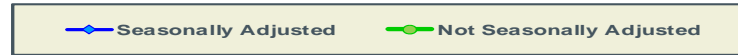


May
2017

Seasonally Adjusted
576,300
Over the Month: 0
Over the Year: -500

New Orleans MSA Nonfarm Employment

Not Seasonally Adjusted
578,500
Over the Month: 500
Over the Year: -1,600

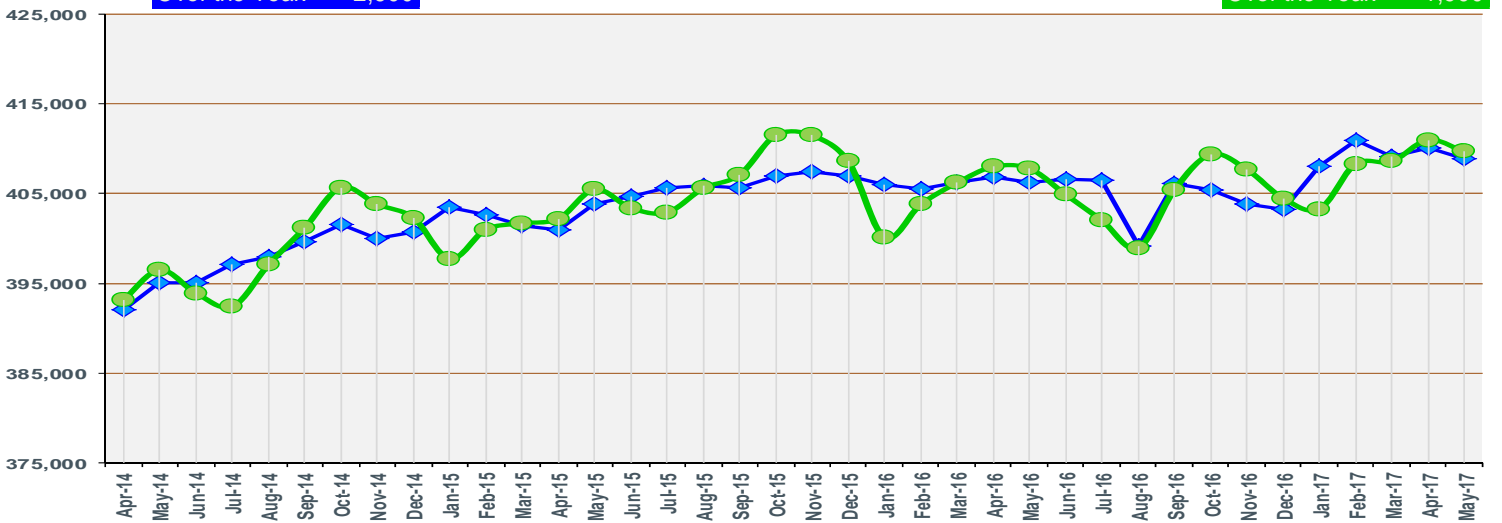
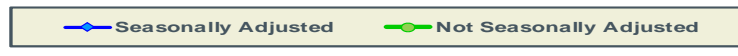


May
2017

Seasonally Adjusted
408,900
Over the Month: -1,200
Over the Year: 2,600

Baton Rouge MSA Nonfarm Employment

Not Seasonally Adjusted
409,700
Over the Month: -1,300
Over the Year: 1,900

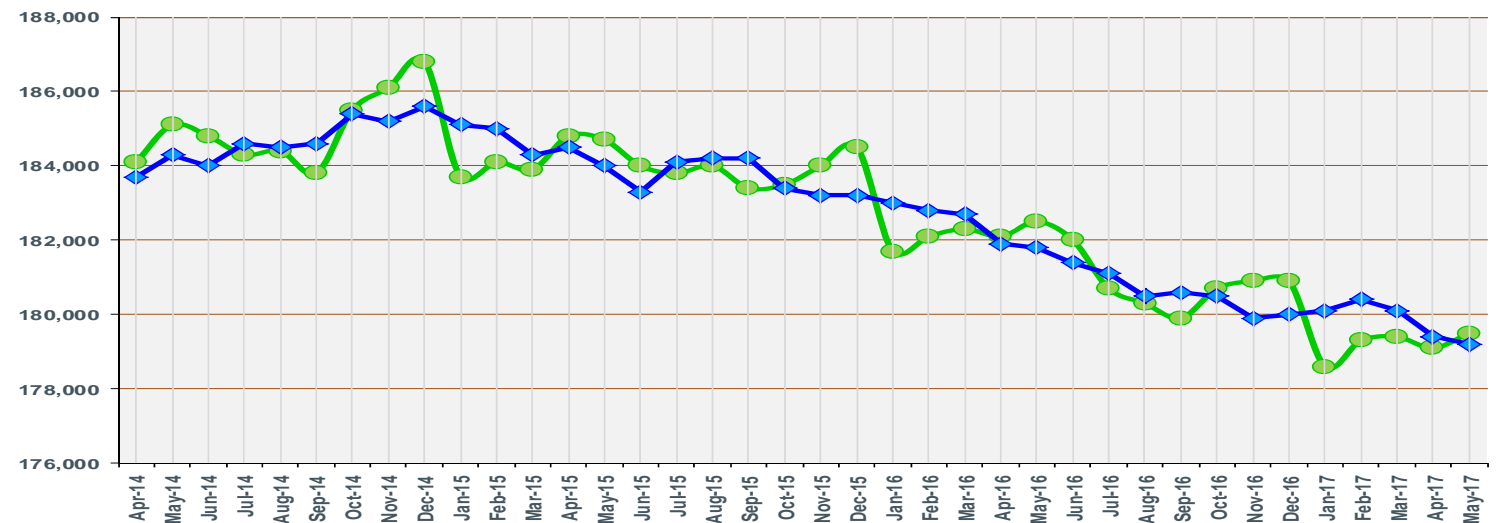
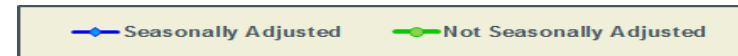


May
2017

Seasonally Adjusted
179,200
Over the Month: -200
Over the Year: -2,600

Shreveport MSA Nonfarm Employment

Not Seasonally Adjusted
179,500
Over the Month: 400
Over the Year: -3,000

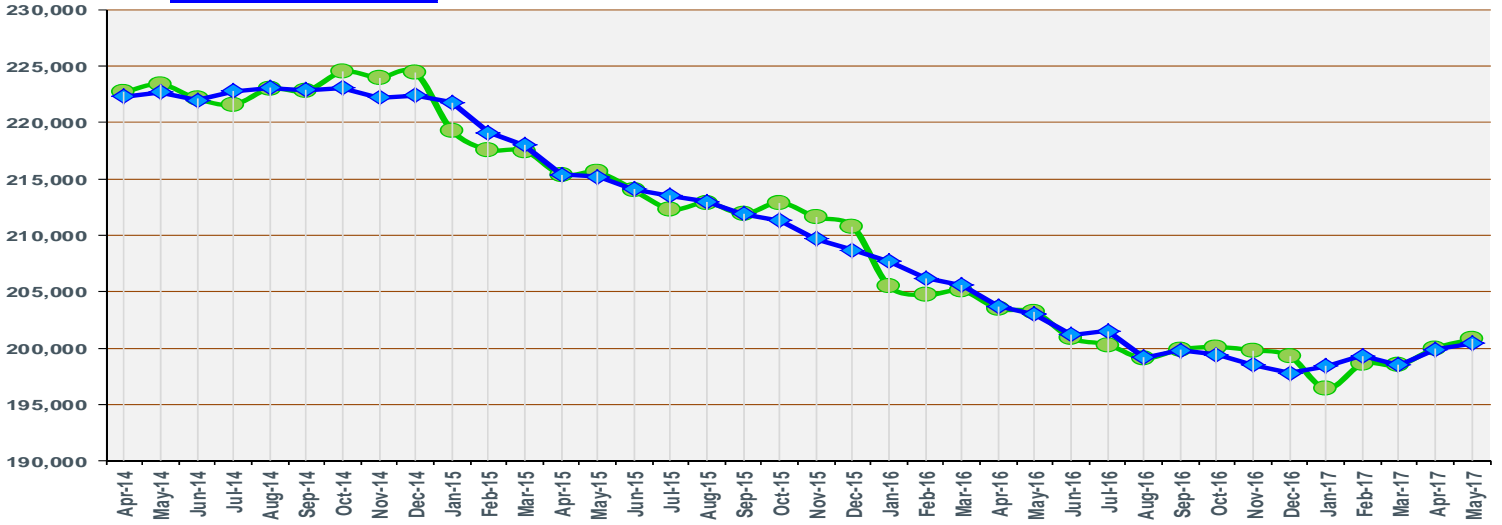


May
2017

Seasonally Adjusted
200,400
Over the Month: 500
Over the Year: -2,600

Lafayette MSA Nonfarm Employment

Not Seasonally Adjusted
200,800
Over the Month: 800
Over the Year: -2,400

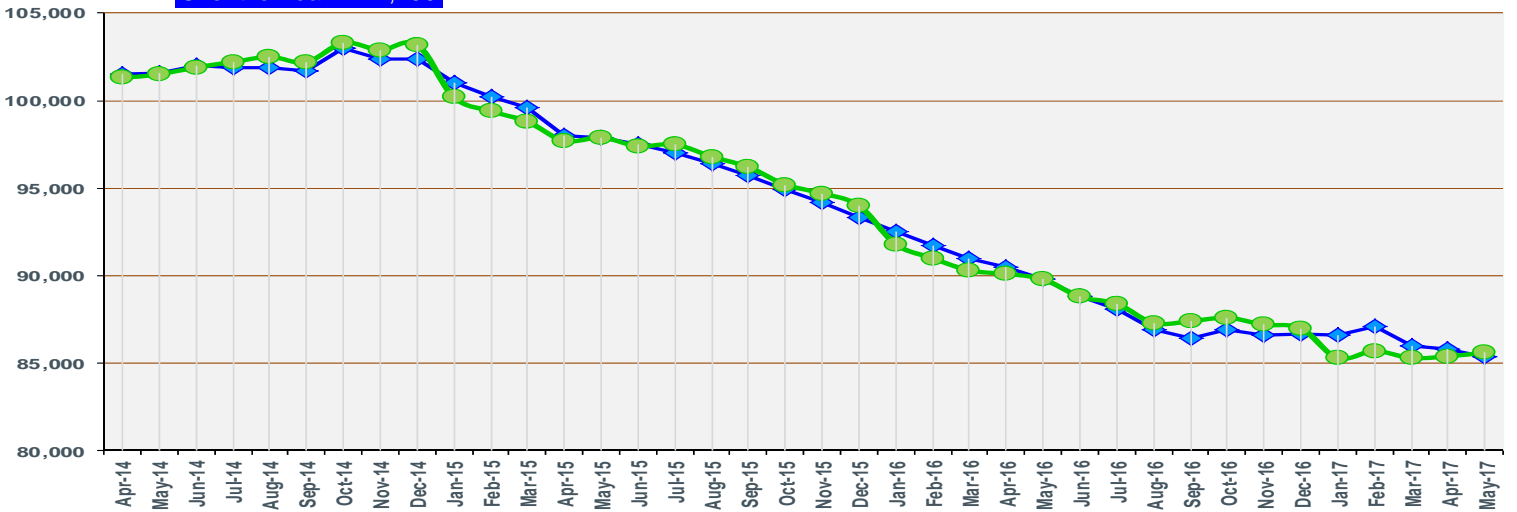


May
2017

Seasonally Adjusted
85,400
Over the Month: -400
Over the Year: -4,400

Houma MSA Nonfarm Employment

Not Seasonally Adjusted
85,600
Over the Month: 200
Over the Year: -4,200

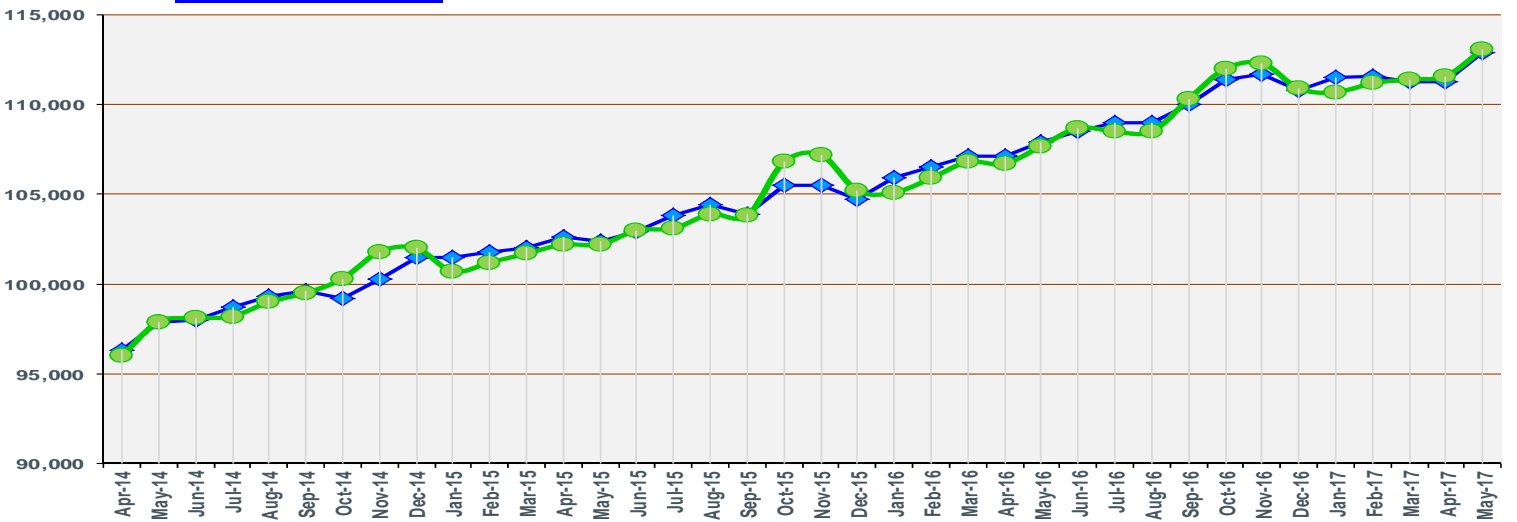
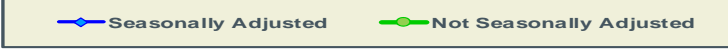


May
2017

Seasonally Adjusted
112,900
Over the Month: 1,600
Over the Year: 5,000

Lake Charles MSA Nonfarm Employment

Not Seasonally Adjusted
113,100
Over the Month: 1,500
Over the Year: 5,400



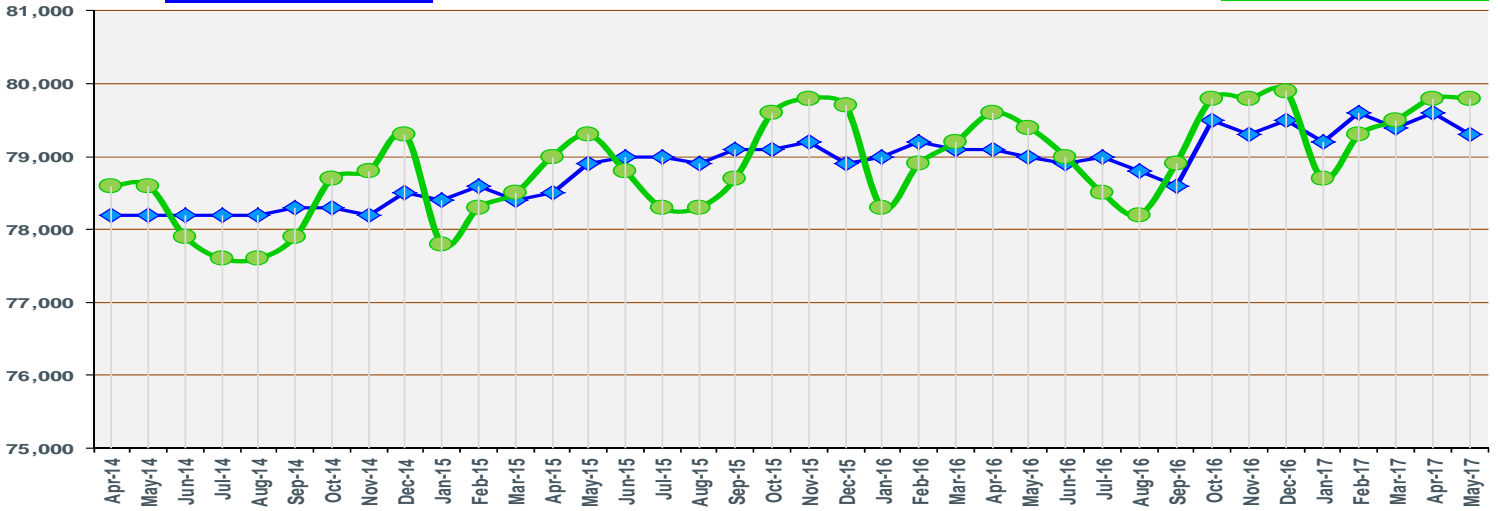
May
2017

Seasonally Adjusted
79,300
Over the Month: -300
Over the Year: 300

Monroe MSA Nonfarm Employment

Seasonally Adjusted Not Seasonally Adjusted

Not Seasonally Adjusted
79,800
Over the Month: 0
Over the Year: 400



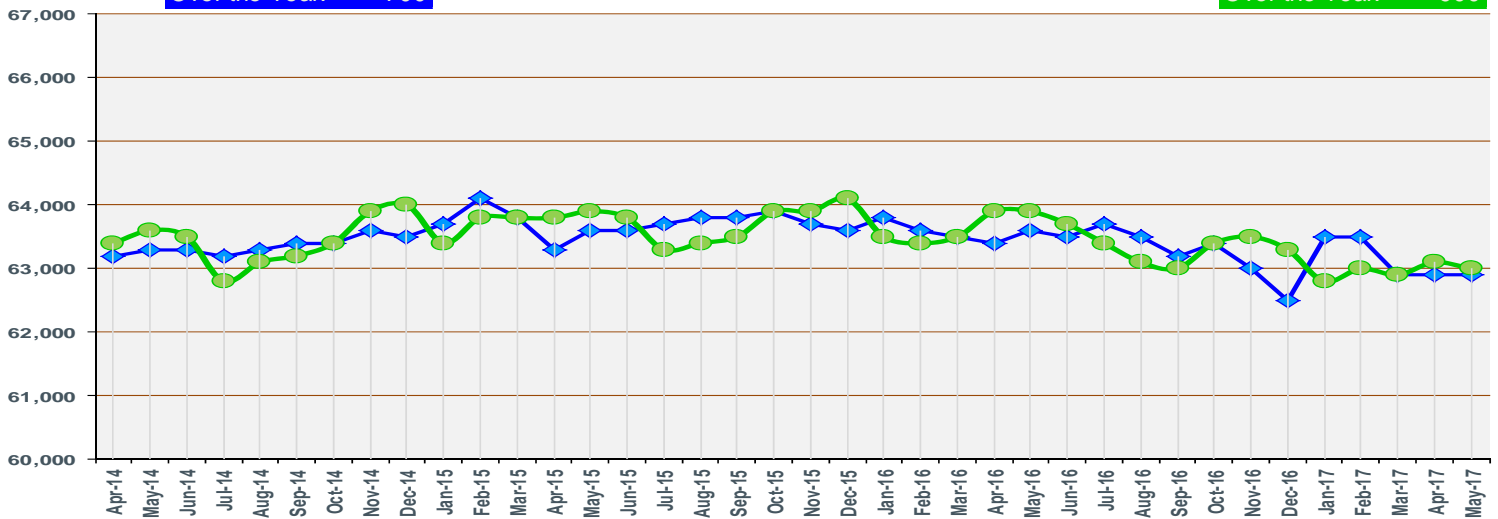
May
2017

Seasonally Adjusted
62,900
Over the Month: 0
Over the Year: -700

Alexandria MSA Nonfarm Employment

Seasonally Adjusted Not Seasonally Adjusted

Not Seasonally Adjusted
63,000
Over the Month: -100
Over the Year: -900



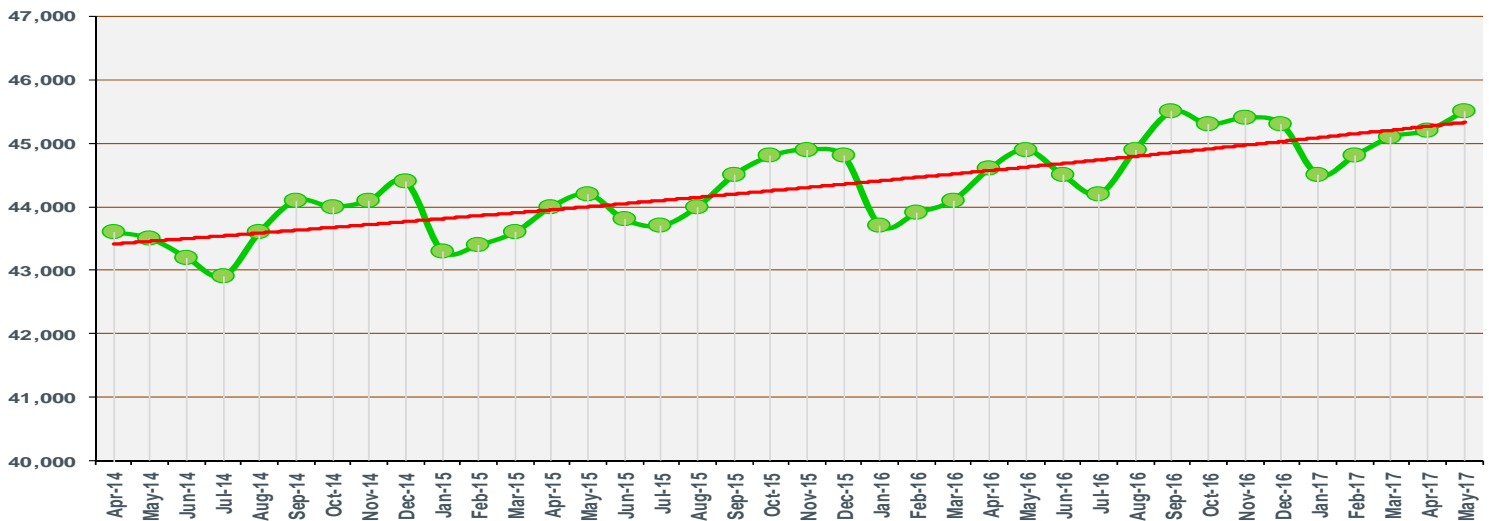
May
2017

The Bureau of Labor
Statistics is not currently
publishing Seasonally
Adjusted for this MSA.

Hammond MSA Nonfarm Employment

Not Seasonally Adjusted 3 Year Trend

Not Seasonally Adjusted
45,500
Over the Month: 300
Over the Year: 600



<i>Louisiana - Seasonally Adjusted</i>	Prel.	Rev.		OTM	OTM	OTY	OTY
	May 2017	Apr 2017	May 2016	Change	% Change	Change	% Change
Total Nonfarm	1,983,200	1,972,700	1,973,800	10,500	0.53%	9,400	0.48%
Total Private	1,659,100	1,650,000	1,646,500	9,100	0.55%	12,600	0.77%
Goods-Producing	320,800	316,500	313,900	4,300	1.36%	6,900	2.20%
Mining and Logging	34,100	35,100	38,300	-1,000	-2.85%	-4,200	-10.97%
Mining, Logging, and Construction	185,800	181,800	177,400	4,000	2.20%	8,400	4.74%
Construction	151,700	146,700	139,100	5,000	3.41%	12,600	9.06%
Manufacturing	135,000	134,700	136,500	300	0.22%	-1,500	-1.10%
Durable Goods	62,400	61,800	65,500	600	0.97%	-3,100	-4.73%
Nondurable Goods	72,600	72,900	71,000	-300	-0.41%	1,600	2.25%
Service-Providing	1,662,400	1,656,200	1,659,900	6,200	0.37%	2,500	0.15%
Private Service-Providing	1,338,300	1,333,500	1,332,600	4,800	0.36%	5,700	0.43%
Trade, Transportation, and Utilities	383,600	383,400	388,600	200	0.05%	-5,000	-1.29%
Wholesale Trade	70,100	70,400	70,700	-300	-0.43%	-600	-0.85%
Retail Trade	232,800	233,400	235,000	-600	-0.26%	-2,200	-0.94%
Transportation, Warehousing, and Utilities	80,700	79,600	82,900	1,100	1.38%	-2,200	-2.65%
Information	22,500	22,700	23,100	-200	-0.88%	-600	-2.60%
Financial Activities	92,500	92,700	92,500	-200	-0.22%	0	0.00%
Real Estate and Rental and Leasing	30,500	30,200	30,600	300	0.99%	-100	-0.33%
Professional and Business Services	214,000	212,000	211,200	2,000	0.94%	2,800	1.33%
Professional, Scientific, and Technical Services	84,900	84,600	87,000	300	0.35%	-2,100	-2.41%
Management of Companies and Enterprises	23,400	23,100	23,300	300	1.30%	100	0.43%
Admin. and Support and Waste Mgmt. and Remediation Serv.	105,700	104,300	100,900	1,400	1.34%	4,800	4.76%
Education and Health Services	316,600	316,400	309,600	200	0.06%	7,000	2.26%
Educational Services	48,400	48,600	46,500	-200	-0.41%	1,900	4.09%
Health Care and Social Assistance	268,200	267,800	263,100	400	0.15%	5,100	1.94%
Leisure and Hospitality	232,200	230,300	232,600	1,900	0.83%	-400	-0.17%
Arts, Entertainment, and Recreation	29,200	29,100	30,400	100	0.34%	-1,200	-3.95%
Accommodation and Food Services	203,000	201,200	202,200	1,800	0.89%	800	0.40%
Other Services	76,900	76,000	75,000	900	1.18%	1,900	2.53%
Government	324,100	322,700	327,300	1,400	0.43%	-3,200	-0.98%
Federal Government	31,200	31,000	30,600	200	0.65%	600	1.96%
State Government	85,300	85,800	85,800	-500	-0.58%	-500	-0.58%
Local Government	207,600	205,900	210,900	1,700	0.83%	-3,300	-1.56%
<i>MSAs - Seasonally Adjusted</i>	Prel. May 2017	Rev. Apr 2017	May 2016	OTM Change	OTM % Change	OTY Change	OTY %
Alexandria Total Nonfarm	62,900	62,900	63,600	0	0.00%	-700	-1.10%
Baton Rouge Total Nonfarm	408,900	410,100	406,300	-1,200	-0.29%	2,600	0.64%
Houma Total Nonfarm	85,400	85,800	89,800	-400	-0.47%	-4,400	-4.90%
Lafayette Total Nonfarm	200,400	199,900	203,000	500	0.25%	-2,600	-1.28%
Lake Charles Total Nonfarm	112,900	111,300	107,900	1,600	1.44%	5,000	4.63%
Monroe Total Nonfarm	79,300	79,600	79,000	-300	-0.38%	300	0.38%
New Orleans Total Nonfarm	576,300	576,300	576,800	0	0.00%	-500	-0.09%
Shreveport Total Nonfarm	179,200	179,400	181,800	-200	-0.11%	-2,600	-1.43%

<i>Louisiana - Not Seasonally Adjusted</i>	Prel.	Rev.		OTM	OTM	OTY	OTY
	May	Apr	May	Change	%	Change	%
	2017	2017	2016		Change		Change
Total Nonfarm	1,987,100	1,974,800	1,980,800	12,300	0.62%	6,300	0.32%
Total Private	1,660,500	1,649,400	1,650,500	11,100	0.67%	10,000	0.61%
Goods-Producing	318,400	314,700	312,100	3,700	1.18%	6,300	2.02%
Mining & Logging	33,900	34,500	38,000	-600	-1.74%	-4,100	-10.79%
Oil & Gas Extraction	7,500	7,600	7,900	-100	-1.32%	-400	-5.06%
Crude Petroleum & Natural Gas Extraction	6,200	6,300	7,200	-100	-1.59%	-1,000	-13.89%
Support Activities for Mining	23,300	23,600	26,200	-300	-1.27%	-2,900	-11.07%
Drilling Oil & Gas Wells	2,700	2,800	3,000	-100	-3.57%	-300	-10.00%
Mining, Logging, & Construction	183,700	180,900	175,700	2,800	1.55%	8,000	4.55%
Construction	149,800	146,400	137,700	3,400	2.32%	12,100	8.79%
Construction of Buildings	35,300	33,900	26,500	1,400	4.13%	8,800	33.21%
Residential Building Construction	5,800	5,700	5,400	100	1.75%	400	7.41%
Nonresidential Building Construction	29,500	28,200	21,100	1,300	4.61%	8,400	39.81%
Heavy & Civil Engineering Construction	52,900	50,500	45,800	2,400	4.75%	7,100	15.50%
Specialty Trade Contractors	61,600	62,000	65,400	-400	-0.65%	-3,800	-5.81%
Manufacturing	134,700	133,800	136,400	900	0.67%	-1,700	-1.25%
Durable Goods	62,600	61,600	65,500	1,000	1.62%	-2,900	-4.43%
Transportation Equipment Manufacturing	9,200	9,200	10,200	0	0.00%	-1,000	-9.80%
Ship & Boat Building	6,200	6,200	6,200	0	0.00%	0	0.00%
Nondurable Goods	72,100	72,200	70,900	-100	-0.14%	1,200	1.69%
Food Manufacturing	15,600	15,400	15,900	200	1.30%	-300	-1.89%
Paper Manufacturing	6,900	6,900	7,000	0	0.00%	-100	-1.43%
Petroleum & Coal Products Manufacturing	11,800	11,800	11,700	0	0.00%	100	0.85%
Chemical Manufacturing	25,600	25,600	25,400	0	0.00%	200	0.79%
Basic Chemical Manufacturing	13,700	13,700	13,600	0	0.00%	100	0.74%
Service-Providing	1,668,700	1,660,100	1,668,700	8,600	0.52%	0	0.00%
Private Service-Providing	1,342,100	1,334,700	1,338,400	7,400	0.55%	3,700	0.28%
Trade, Transportation, & Utilities	383,100	383,000	387,700	100	0.03%	-4,600	-1.19%
Wholesale Trade	69,900	69,900	70,700	0	0.00%	-800	-1.13%
Merchant Wholesalers, Durable Goods	37,400	37,400	36,400	0	0.00%	1,000	2.75%
Merchant Wholesalers, Nondurable Goods	24,900	24,900	25,600	0	0.00%	-700	-2.73%
Retail Trade	232,600	233,000	234,300	-400	-0.17%	-1,700	-0.73%
Motor Vehicle & Parts Dealers	30,000	30,000	29,900	0	0.00%	100	0.33%
Building Material & Garden Equipment & Supplies Dealers	21,300	21,500	20,700	-200	-0.93%	600	2.90%
Food & Beverage Stores	40,000	40,000	39,700	0	0.00%	300	0.76%
Grocery Stores	35,300	35,400	34,900	-100	-0.28%	400	1.15%
Health & Personal Care Stores	17,300	17,300	16,900	0	0.00%	400	2.37%
Gasoline Stations	20,200	20,000	20,000	200	1.00%	200	1.00%
Clothing and Clothing Accessories Stores	17,700	17,700	17,600	0	0.00%	100	0.57%
General Merchandise Stores	56,600	56,600	54,800	0	0.00%	1,800	3.28%
Department Stores	10,000	10,100	10,600	-100	-0.99%	-600	-5.66%
Transportation, Warehousing, & Utilities	80,600	80,100	82,700	500	0.62%	-2,100	-2.54%
Transportation and Warehousing	72,100	71,800	74,300	300	0.42%	-2,200	-2.96%
Truck Transportation	16,800	16,600	17,300	200	1.20%	-500	-2.89%
Support Activities for Transportation	18,600	18,500	19,400	100	0.54%	-800	-4.12%

<i>Louisiana - Not Seasonally Adjusted</i>	Prel.	Rev.		OTM	OTM	OTY	OTY
	May	Apr	May	Change	%	Change	%
	2017	2017	2016		Change		Change
Information	22,900	23,000	23,800	-100	-0.43%	-900	-3.78%
Telecommunications	8,800	8,800	9,200	0	0.00%	-400	-4.35%
Financial Activities	92,300	92,400	92,300	-100	-0.11%	0	0.00%
Finance & Insurance	62,000	62,300	61,700	-300	-0.48%	300	0.49%
Credit Intermediation & Related Activities	29,900	30,000	30,400	-100	-0.33%	-500	-1.64%
Depository Credit Intermediation	21,000	20,900	21,400	100	0.48%	-400	-1.87%
Insurance Carriers & Related Activities	28,300	28,200	27,400	100	0.35%	900	3.28%
Real Estate & Rental & Leasing	30,300	30,100	30,600	200	0.66%	-300	-0.98%
Professional & Business Services	213,400	211,800	212,100	1,600	0.76%	1,300	0.61%
Professional, Scientific, & Technical Services	83,600	84,400	86,200	-800	-0.95%	-2,600	-3.02%
Legal Services	17,600	17,900	18,600	-300	-1.68%	-1,000	-5.38%
Accounting, Tax Preparation, Bookkeeping & Payroll Services	11,100	12,400	11,100	-1,300	-10.48%	0	0.00%
Architectural, Engineering, & Related Services	23,000	22,800	23,500	200	0.88%	-500	-2.13%
Management of Companies & Enterprises	23,300	23,000	23,200	300	1.30%	100	0.43%
Admin. & Support & Waste Mgmt. & Remediation Serv.	106,500	104,400	102,700	2,100	2.01%	3,800	3.70%
Administrative & Support Services	96,900	95,000	93,400	1,900	2.00%	3,500	3.75%
Employment Services	33,800	33,200	33,000	600	1.81%	800	2.42%
Services to Buildings & Dwellings	24,600	24,300	23,600	300	1.23%	1,000	4.24%
Education & Health Services	316,700	316,200	310,200	500	0.16%	6,500	2.10%
Educational Services	48,700	49,400	47,000	-700	-1.42%	1,700	3.62%
Colleges, Universities, & Professional Schools	14,400	14,800	13,400	-400	-2.70%	1,000	7.46%
Health Care & Social Assistance	268,000	266,800	263,200	1,200	0.45%	4,800	1.82%
Ambulatory Health Care Services	100,500	100,600	99,200	-100	-0.10%	1,300	1.31%
Offices of Physicians	39,900	39,600	38,800	300	0.76%	1,100	2.84%
Home Health Care Services	20,800	20,800	21,400	0	0.00%	-600	-2.80%
Hospitals	78,700	78,400	77,300	300	0.38%	1,400	1.81%
Nursing & Residential Care Facilities	44,400	43,700	42,000	700	1.60%	2,400	5.71%
Nursing Care Facilities	26,800	26,700	26,500	100	0.37%	300	1.13%
Social Assistance	44,400	44,100	44,700	300	0.68%	-300	-0.67%
Leisure & Hospitality	236,200	232,000	236,900	4,200	1.81%	-700	-0.30%
Arts, Entertainment, & Recreation	30,200	28,900	31,200	1,300	4.50%	-1,000	-3.21%
Amusement, Gambling, & Recreation Industries	24,100	23,000	24,200	1,100	4.78%	-100	-0.41%
Gambling Industries	10,000	9,800	10,400	200	2.04%	-400	-3.85%
Accommodation & Food Services	206,000	203,100	205,700	2,900	1.43%	300	0.15%
Accommodation	34,600	34,100	33,700	500	1.47%	900	2.67%
Food Services & Drinking Places	171,400	169,000	172,000	2,400	1.42%	-600	-0.35%
Other Services	77,500	76,300	75,400	1,200	1.57%	2,100	2.79%
Repair & Maintenance	20,500	19,300	19,600	1,200	6.22%	900	4.59%
Automotive Repair & Maintenance	11,400	11,300	11,300	100	0.88%	100	0.88%
Personal & Laundry Services	17,300	17,200	17,100	100	0.58%	200	1.17%
Government	326,600	325,400	330,300	1,200	0.37%	-3,700	-1.12%
Federal Government	31,200	30,900	30,600	300	0.97%	600	1.96%
State Government	85,500	86,600	85,900	-1,100	-1.27%	-400	-0.47%
Local Government	209,900	207,900	213,800	2,000	0.96%	-3,900	-1.82%

LOUISIANA & MSAs NONFARM EMPLOYMENT

12

<i>New Orleans-Metairie MSA - Not Seasonally Adjusted</i>	Prel. May 2017	Rev. Apr 2017	May 2016	OTM Change	OTM % Change	OTY Change	OTY % Change
Total Nonfarm	578,500	578,000	580,100	500	0.09%	-1,600	-0.28%
Total Private	509,000	508,400	505,700	600	0.12%	3,300	0.65%
Goods-Producing	65,900	66,500	65,000	-600	-0.90%	900	1.38%
Mining & Logging	5,000	5,100	5,500	-100	-1.96%	-500	-9.09%
Mining, Logging, & Construction	35,400	35,900	34,800	-500	-1.39%	600	1.72%
Construction	30,400	30,800	29,300	-400	-1.30%	1,100	3.75%
Heavy & Civil Engineering Construction	7,000	6,900	7,000	100	1.45%	0	0.00%
Specialty Trade Contractors	14,900	15,300	16,200	-400	-2.61%	-1,300	-8.02%
Manufacturing	30,500	30,600	30,200	-100	-0.33%	300	0.99%
Durable Goods	11,400	11,500	11,500	-100	-0.87%	-100	-0.87%
Transportation Equipment Manufacturing	2,300	2,300	2,400	0	0.00%	-100	-4.17%
Ship & Boat Building	1,400	1,400	1,300	0	0.00%	100	7.69%
Nondurable Goods	19,100	19,100	18,700	0	0.00%	400	2.14%
Chemical Manufacturing	5,300	5,400	5,200	-100	-1.85%	100	1.92%
Service-Providing	512,600	511,500	515,100	1,100	0.22%	-2,500	-0.49%
Private Service-Providing	443,100	441,900	440,700	1,200	0.27%	2,400	0.54%
Trade, Transportation, & Utilities	114,700	114,500	115,800	200	0.17%	-1,100	-0.95%
Wholesale Trade	22,800	22,500	23,200	300	1.33%	-400	-1.72%
Merchant Wholesalers, Durable Goods	10,600	10,500	10,400	100	0.95%	200	1.92%
Merchant Wholesalers, Nondurable Goods	8,600	8,600	8,800	0	0.00%	-200	-2.27%
Retail Trade	63,900	63,900	64,100	0	0.00%	-200	-0.31%
Grocery Stores	10,400	10,500	10,300	-100	-0.95%	100	0.97%
General Merchandise Stores	14,700	14,700	13,800	0	0.00%	900	6.52%
Transportation, Warehousing, & Utilities	28,000	28,100	28,500	-100	-0.36%	-500	-1.75%
Information	6,900	7,000	7,500	-100	-1.43%	-600	-8.00%
Financial Activities	29,600	29,700	29,900	-100	-0.34%	-300	-1.00%
Finance & Insurance	21,900	21,800	21,200	100	0.46%	700	3.30%
Credit Intermediation & Related Activities	8,000	8,100	8,100	-100	-1.23%	-100	-1.23%
Depository Credit Intermediation	5,900	5,900	6,100	0	0.00%	-200	-3.28%
Professional & Business Services	77,400	76,900	76,400	500	0.65%	1,000	1.31%
Professional, Scientific, & Technical Services	30,600	31,000	31,700	-400	-1.29%	-1,100	-3.47%
Legal Services	7,900	8,100	8,400	-200	-2.47%	-500	-5.95%
Management of Companies & Enterprises	7,800	7,700	8,000	100	1.30%	-200	-2.50%
Admin. & Support & Waste Mgmt. & Remediation Serv.	39,000	38,200	36,700	800	2.09%	2,300	6.27%
Administrative & Support Services	36,600	35,700	34,200	900	2.52%	2,400	7.02%
Employment Services	12,600	12,500	13,000	100	0.80%	-400	-3.08%
Education & Health Services	101,100	102,200	98,900	-1,100	-1.08%	2,200	2.22%
Educational Services	31,400	31,600	30,400	-200	-0.63%	1,000	3.29%
Colleges, Universities, & Professional Schools	12,700	12,900	11,900	-200	-1.55%	800	6.72%
Health Care & Social Assistance	69,700	70,600	68,500	-900	-1.27%	1,200	1.75%
Ambulatory Health Care Services	26,900	26,800	26,300	100	0.37%	600	2.28%
Hospitals	25,200	25,000	22,900	200	0.80%	2,300	10.04%
Leisure & Hospitality	89,000	87,300	88,300	1,700	1.95%	700	0.79%
Arts, Entertainment, & Recreation	11,900	11,400	12,000	500	4.39%	-100	-0.83%
Amusement, Gambling, & Recreation Industries	6,500	6,000	6,800	500	8.33%	-300	-4.41%
Gambling Industries	1,800	1,700	1,800	100	5.88%	0	0.00%
Accommodation & Food Services	77,100	75,900	76,300	1,200	1.58%	800	1.05%
Accommodation	14,900	14,600	14,900	300	2.05%	0	0.00%
Food Services & Drinking Places	62,200	61,300	61,400	900	1.47%	800	1.30%
Other Services	24,400	24,300	23,900	100	0.41%	500	2.09%
Government	69,500	69,600	74,400	-100	-0.14%	-4,900	-6.59%
Federal Government	12,400	12,300	12,300	100	0.81%	100	0.81%
State Government	11,800	11,800	12,600	0	0.00%	-800	-6.35%
Local Government	45,300	45,500	49,500	-200	-0.44%	-4,200	-8.48%
<i>Hammond MSA - Not Seasonally Adjusted</i>	Prel. May 2017	Rev. Apr 2017	May 2016	OTM Change	OTM % Change	OTY Change	OTY % Change
Total Nonfarm	45,500	45,200	44,900	300	0.66%	600	1.34%
Total Private	34,300	34,000	33,800	300	0.88%	500	1.48%
Goods-Producing	3,600	3,400	3,400	200	5.88%	200	5.88%
Service-Providing	41,900	41,800	41,500	100	0.24%	400	0.96%
Private Service-Providing	30,700	30,600	30,400	100	0.33%	300	0.99%
Government	11,200	11,200	11,100	0	0.00%	100	0.90%

<i>Baton Rouge MSA - Not Seasonally Adjusted</i>	Prel.	Rev.		OTM	OTM	OTY	OTY
	May 2017	Apr 2017	May 2016	Change	% Change	Change	% Change
Total Nonfarm	409,700	411,000	407,800	-1,300	-0.32%	1,900	0.47%
Total Private	337,100	338,200	334,200	-1,100	-0.33%	2,900	0.87%
Goods-Producing	83,800	83,000	80,300	800	0.96%	3,500	4.36%
Mining & Logging	1,000	1,000	1,100	0	0.00%	-100	-9.09%
Mining, Logging, & Construction	54,600	53,900	51,300	700	1.30%	3,300	6.43%
Construction	53,600	52,900	50,200	700	1.32%	3,400	6.77%
Construction of Buildings	9,900	9,800	7,900	100	1.02%	2,000	25.32%
Nonresidential Building Construction	8,400	8,400	6,600	0	0.00%	1,800	27.27%
Heavy & Civil Engineering Construction	20,700	20,000	19,200	700	3.50%	1,500	7.81%
Specialty Trade Contractors	23,000	23,100	23,100	-100	-0.43%	-100	-0.43%
Manufacturing	29,200	29,100	29,000	100	0.34%	200	0.69%
Nondurable Goods	18,400	18,300	18,300	100	0.55%	100	0.55%
Chemical Manufacturing	10,900	10,800	10,700	100	0.93%	200	1.87%
Basic Chemical Manufacturing	6,000	6,000	6,000	0	0.00%	0	0.00%
Service-Providing	325,900	328,000	327,500	-2,100	-0.64%	-1,600	-0.49%
Private Service-Providing	253,300	255,200	253,900	-1,900	-0.74%	-600	-0.24%
Trade, Transportation, & Utilities	68,500	69,200	70,400	-700	-1.01%	-1,900	-2.70%
Wholesale Trade	13,300	13,300	13,400	0	0.00%	-100	-0.75%
Retail Trade	41,400	42,100	42,900	-700	-1.66%	-1,500	-3.50%
Grocery Stores	6,700	6,800	6,600	-100	-1.47%	100	1.52%
General Merchandise Stores	9,700	9,700	9,600	0	0.00%	100	1.04%
Department Stores	1,400	1,400	1,500	0	0.00%	-100	-6.67%
Transportation, Warehousing, & Utilities	13,800	13,800	14,100	0	0.00%	-300	-2.13%
Information	5,400	5,400	5,900	0	0.00%	-500	-8.47%
Financial Activities	19,100	19,000	18,900	100	0.53%	200	1.06%
Finance & Insurance	12,600	12,700	12,600	-100	-0.79%	0	0.00%
Depository Credit Intermediation	3,700	3,700	3,800	0	0.00%	-100	-2.63%
Professional & Business Services	48,800	49,700	48,600	-900	-1.81%	200	0.41%
Professional, Scientific, & Technical Services	20,000	20,800	20,700	-800	-3.85%	-700	-3.38%
Admin. & Support & Waste Mgmt. & Remediation Serv.	22,500	22,500	22,200	0	0.00%	300	1.35%
Education & Health Services	54,100	54,000	52,500	100	0.19%	1,600	3.05%
Health Care & Social Assistance	47,100	46,200	45,600	900	1.95%	1,500	3.29%
Ambulatory Health Care Services	19,900	19,900	20,200	0	0.00%	-300	-1.49%
Hospitals	12,000	12,000	12,000	0	0.00%	0	0.00%
Leisure & Hospitality	40,600	41,200	40,700	-600	-1.46%	-100	-0.25%
Accommodation & Food Services	33,500	34,600	34,500	-1,100	-3.18%	-1,000	-2.90%
Food Services & Drinking Places	29,800	31,000	31,600	-1,200	-3.87%	-1,800	-5.70%
Other Services	16,800	16,700	16,900	100	0.60%	-100	-0.59%
Government	72,600	72,800	73,600	-200	-0.27%	-1,000	-1.36%
Federal Government	2,900	2,800	2,900	100	3.57%	0	0.00%
State Government	36,800	37,200	37,700	-400	-1.08%	-900	-2.39%
Local Government	32,900	32,800	33,000	100	0.30%	-100	-0.30%
Houma-Thibodaux MSA - Not Seasonally Adjusted							
	Prel. May 2017	Rev. Apr 2017	May 2016	OTM Change	OTM % Change	OTY Change	OTY % Change
Total Nonfarm	85,600	85,400	89,800	200	0.23%	-4,200	-4.68%
Total Private	72,900	72,800	76,900	100	0.14%	-4,000	-5.20%
Goods-Producing	16,800	16,700	17,800	100	0.60%	-1,000	-5.62%
Mining & Logging	5,200	5,300	5,800	-100	-1.89%	-600	-10.34%
Support Activities for Mining	4,500	4,500	5,000	0	0.00%	-500	-10.00%
Mining, Logging, & Construction	9,800	9,800	10,400	0	0.00%	-600	-5.77%
Construction	4,600	4,500	4,600	100	2.22%	0	0.00%
Service-Providing	68,800	68,700	72,000	100	0.15%	-3,200	-4.44%
Private Service-Providing	56,100	56,100	59,100	0	0.00%	-3,000	-5.08%
Trade, Transportation, & Utilities	21,100	20,900	24,300	200	0.96%	-3,200	-13.17%
Retail Trade	11,100	11,000	10,900	100	0.91%	200	1.83%
Support Activities for Transportation	4,300	4,300	5,100	0	0.00%	-800	-15.69%
Administrative & Support Services	3,400	3,300	3,400	100	3.03%	0	0.00%
Employment Services	1,800	1,700	1,700	100	5.88%	100	5.88%
Leisure & Hospitality	8,100	8,000	8,300	100	1.25%	-200	-2.41%
Government	12,700	12,600	12,900	100	0.79%	-200	-1.55%
Federal Government	400	400	400	0	0.00%	0	0.00%
State Government	2,100	2,100	2,300	0	0.00%	-200	-8.70%
Local Government	10,200	10,100	10,200	100	0.99%	0	0.00%

LOUISIANA & MSAs NONFARM EMPLOYMENT

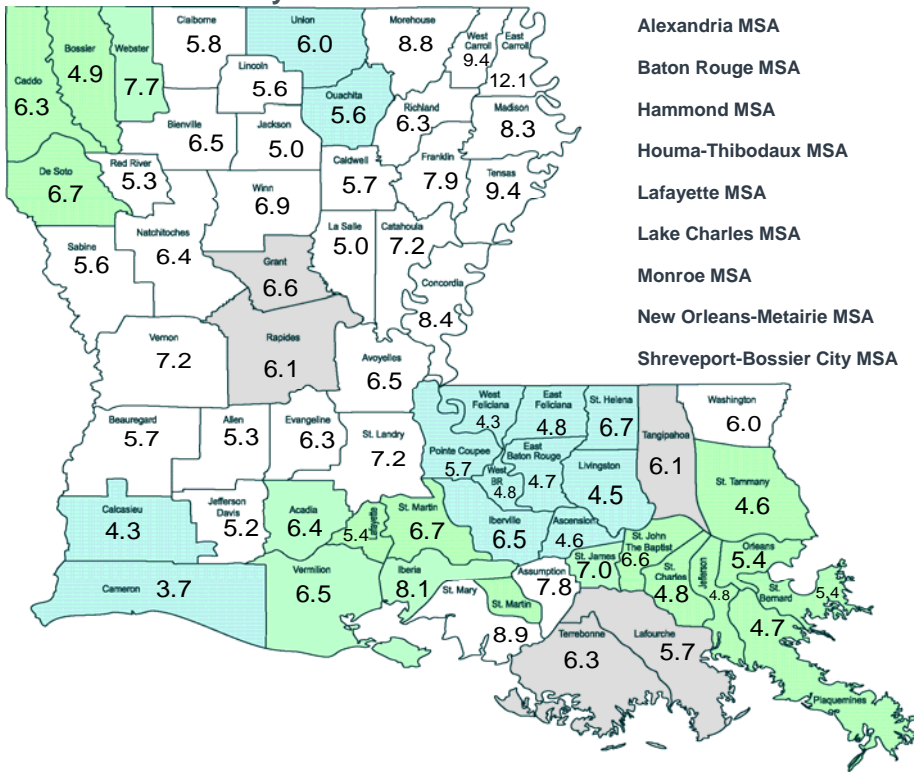
14

<i>Shreveport-Bossier City MSA - Not Seasonally Adjusted</i>	Prel.	Rev.		OTM	OTM	OTY	OTY
	May 2017	Apr 2017	May 2016	Change	% Change	Change	% Change
Total Nonfarm	179,500	179,100	182,500	400	0.22%	-3,000	-1.64%
Total Private	149,900	149,600	151,600	300	0.20%	-1,700	-1.12%
Goods-Producing	21,800	21,900	22,700	-100	-0.46%	-900	-3.96%
Mining & Logging	3,300	3,400	3,900	-100	-2.94%	-600	-15.38%
Mining, Logging, & Construction	11,500	11,500	12,300	0	0.00%	-800	-6.50%
Construction	8,200	8,100	8,400	100	1.23%	-200	-2.38%
Manufacturing	10,300	10,400	10,400	-100	-0.96%	-100	-0.96%
Service-Providing	157,700	157,200	159,800	500	0.32%	-2,100	-1.31%
Private Service-Providing	128,100	127,700	128,900	400	0.31%	-800	-0.62%
Trade, Transportation, & Utilities	37,600	37,800	38,000	-200	-0.53%	-400	-1.05%
Wholesale Trade	7,600	7,600	7,800	0	0.00%	-200	-2.56%
Retail Trade	23,800	24,100	23,800	-300	-1.24%	0	0.00%
General Merchandise Stores	6,000	6,000	5,900	0	0.00%	100	1.69%
Transportation, Warehousing, & Utilities	6,200	6,100	6,400	100	1.64%	-200	-3.13%
Information	2,000	2,000	2,000	0	0.00%	0	0.00%
Financial Activities	7,500	7,400	7,500	100	1.35%	0	0.00%
Professional & Business Services	16,100	16,000	16,900	100	0.63%	-800	-4.73%
Admin. & Support & Waste Mgmt. & Remediation Serv.	10,200	10,000	10,400	200	2.00%	-200	-1.92%
Education & Health Services	33,900	34,000	33,200	-100	-0.29%	700	2.11%
Health Care & Social Assistance	31,500	31,400	30,900	100	0.32%	600	1.94%
Hospitals	13,400	13,300	13,100	100	0.75%	300	2.29%
Leisure & Hospitality	24,300	23,800	24,700	500	2.10%	-400	-1.62%
Arts, Entertainment, & Recreation	4,800	4,600	5,000	200	4.35%	-200	-4.00%
Amusement, Gambling, & Recreation Industries	4,600	4,300	4,700	300	6.98%	-100	-2.13%
Gambling Industries	3,300	3,300	3,500	0	0.00%	-200	-5.71%
Accommodation & Food Services	19,500	19,200	19,700	300	1.56%	-200	-1.02%
Food Services & Drinking Places	15,700	15,500	15,900	200	1.29%	-200	-1.26%
Other Services	6,700	6,700	6,600	0	0.00%	100	1.52%
Government	29,600	29,500	30,900	100	0.34%	-1,300	-4.21%
Federal Government	4,800	4,800	4,800	0	0.00%	0	0.00%
State Government	5,200	5,200	5,700	0	0.00%	-500	-8.77%
Local Government	19,600	19,500	20,400	100	0.51%	-800	-3.92%
<i>Lafayette MSA - Not Seasonally Adjusted</i>	Prel. May 2017	Rev. Apr 2017	May 2016	OTM Change	OTM % Change	OTY Change	OTY % Change
Total Nonfarm	200,800	200,000	203,200	800	0.40%	-2,400	-1.18%
Total Private	173,900	173,400	176,400	500	0.29%	-2,500	-1.42%
Goods-Producing	38,900	38,600	40,600	300	0.78%	-1,700	-4.19%
Mining & Logging	13,800	13,800	14,900	0	0.00%	-1,100	-7.38%
Support Activities for Mining	11,000	11,100	12,600	-100	-0.90%	-1,600	-12.70%
Mining, Logging, & Construction	23,600	23,600	25,000	0	0.00%	-1,400	-5.60%
Construction	9,800	9,800	10,100	0	0.00%	-300	-2.97%
Manufacturing	15,300	15,000	15,600	300	2.00%	-300	-1.92%
Service-Providing	161,900	161,400	162,600	500	0.31%	-700	-0.43%
Private Service-Providing	135,000	134,800	135,800	200	0.15%	-800	-0.59%
Trade, Transportation, & Utilities	41,900	41,900	42,200	0	0.00%	-300	-0.71%
Wholesale Trade	9,000	9,000	9,100	0	0.00%	-100	-1.10%
Retail Trade	28,000	28,000	27,900	0	0.00%	100	0.36%
General Merchandise Stores	6,000	6,000	5,600	0	0.00%	400	7.14%
Transportation, Warehousing, & Utilities	4,900	4,900	5,200	0	0.00%	-300	-5.77%
Information	2,500	2,500	2,600	0	0.00%	-100	-3.85%
Financial Activities	10,400	10,400	10,600	0	0.00%	-200	-1.89%
Professional & Business Services	20,000	20,000	20,400	0	0.00%	-400	-1.96%
Professional, Scientific, & Technical Services	8,700	8,800	9,100	-100	-1.14%	-400	-4.40%
Education & Health Services	30,300	30,300	30,100	0	0.00%	200	0.66%
Health Care & Social Assistance	29,100	29,000	29,000	100	0.34%	100	0.34%
Hospitals	7,500	7,500	7,800	0	0.00%	-300	-3.85%
Leisure & Hospitality	22,700	22,500	22,700	200	0.89%	0	0.00%
Accommodation & Food Services	20,000	19,900	19,900	100	0.50%	100	0.50%
Food Services & Drinking Places	18,400	18,300	18,200	100	0.55%	200	1.10%
Other Services	7,200	7,200	7,200	0	0.00%	0	0.00%
Government	26,900	26,600	26,800	300	1.13%	100	0.37%
Federal Government	1,400	1,300	1,400	100	7.69%	0	0.00%
State Government	5,700	5,600	5,600	100	1.79%	100	1.79%
Local Government	19,800	19,700	19,800	100	0.51%	0	0.00%

<i>Lake Charles MSA - Not Seasonally Adjusted</i>	Prel.	Rev.		OTM	OTM	OTY	OTY
	May	Apr	May	Change	%	Change	%
	2017	2017	2016		Change		Change
Total Nonfarm	113,100	111,600	107,700	1,500	1.34%	5,400	5.01%
Total Private	97,800	96,400	92,200	1,400	1.45%	5,600	6.07%
Goods-Producing	34,300	33,500	29,900	800	2.39%	4,400	14.72%
Mining & Logging	500	500	500	0	0.00%	0	0.00%
Mining, Logging, & Construction	23,800	23,100	19,300	700	3.03%	4,500	23.32%
Construction	23,300	22,600	18,800	700	3.10%	4,500	23.94%
Heavy & Civil Engineering Construction	8,800	8,700	9,000	100	1.15%	-200	-2.22%
Manufacturing	10,500	10,400	10,600	100	0.96%	-100	-0.94%
Nondurable Goods	7,600	7,500	7,300	100	1.33%	300	4.11%
Service-Providing	78,800	78,100	77,800	700	0.90%	1,000	1.29%
Private Service-Providing	63,500	62,900	62,300	600	0.95%	1,200	1.93%
Trade, Transportation, & Utilities	18,400	18,400	17,600	0	0.00%	800	4.55%
Retail Trade	11,400	11,400	11,300	0	0.00%	100	0.88%
Professional & Business Services	9,500	9,500	9,500	0	0.00%	0	0.00%
Leisure & Hospitality	15,500	15,100	15,200	400	2.65%	300	1.97%
Accommodation & Food Services	14,000	13,800	13,800	200	1.45%	200	1.45%
Government	15,300	15,200	15,500	100	0.66%	-200	-1.29%
Federal Government	600	600	600	0	0.00%	0	0.00%
State Government	2,800	2,800	3,000	0	0.00%	-200	-6.67%
Local Government	11,900	11,800	11,900	100	0.85%	0	0.00%
<i>Monroe MSA - Not Seasonally Adjusted</i>	Prel.	Rev.		OTM	OTM	OTY	OTY
	May	Apr	May	Change	%	Change	%
	2017	2017	2016		Change		Change
Total Nonfarm	79,800	79,800	79,400	0	0.00%	400	0.50%
Total Private	68,400	68,400	67,500	0	0.00%	900	1.33%
Goods-Producing	10,800	10,800	10,400	0	0.00%	400	3.85%
Manufacturing	6,500	6,500	6,500	0	0.00%	0	0.00%
Nondurable Goods	4,700	4,700	4,500	0	0.00%	200	4.44%
Service-Providing	69,000	69,000	69,000	0	0.00%	0	0.00%
Private Service-Providing	57,600	57,600	57,100	0	0.00%	500	0.88%
Trade, Transportation, & Utilities	14,800	14,900	14,700	-100	-0.67%	100	0.68%
Retail Trade	10,400	10,500	10,300	-100	-0.95%	100	0.97%
Professional & Business Services	8,800	8,800	8,700	0	0.00%	100	1.15%
Education & Health Services	15,900	15,900	15,900	0	0.00%	0	0.00%
Hospitals	3,600	3,600	3,800	0	0.00%	-200	-5.26%
Leisure & Hospitality	8,200	8,100	8,000	100	1.23%	200	2.50%
Government	11,400	11,400	11,900	0	0.00%	-500	-4.20%
Federal Government	500	500	500	0	0.00%	0	0.00%
State Government	2,300	2,300	2,700	0	0.00%	-400	-14.81%
Local Government	8,600	8,600	8,700	0	0.00%	-100	-1.15%
<i>Alexandria MSA - Not Seasonally Adjusted</i>	Prel.	Rev.		OTM	OTM	OTY	OTY
	May	Apr	May	Change	%	Change	%
	2017	2017	2016		Change		Change
Total Nonfarm	63,000	63,100	63,900	-100	-0.16%	-900	-1.41%
Total Private	49,800	49,800	50,500	0	0.00%	-700	-1.39%
Goods-Producing	8,300	8,400	8,800	-100	-1.19%	-500	-5.68%
Service-Providing	54,700	54,700	55,100	0	0.00%	-400	-0.73%
Private Service-Providing	41,500	41,400	41,700	100	0.24%	-200	-0.48%
Trade, Transportation, & Utilities	11,100	11,000	11,400	100	0.91%	-300	-2.63%
Retail Trade	7,800	7,800	8,000	0	0.00%	-200	-2.50%
Hospitals	4,000	4,000	4,000	0	0.00%	0	0.00%
Government	13,200	13,300	13,400	-100	-0.75%	-200	-1.49%
Federal Government	2,800	2,900	2,900	-100	-3.45%	-100	-3.45%
State Government	3,400	3,400	3,500	0	0.00%	-100	-2.86%
Local Government	7,000	7,000	7,000	0	0.00%	0	0.00%

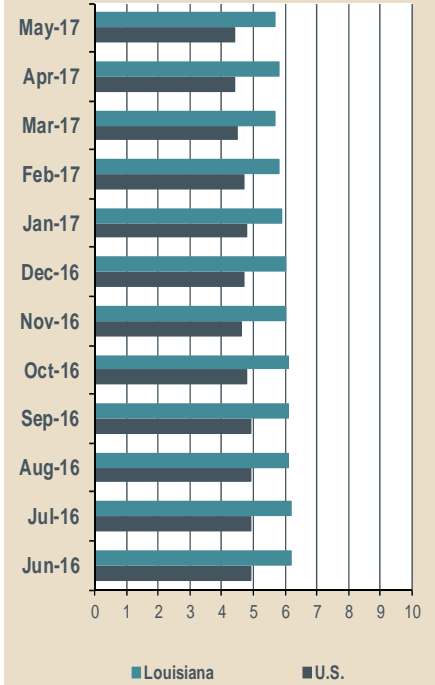
Louisiana Unemployment Rates (Not Seasonally Adjusted)

May 2017



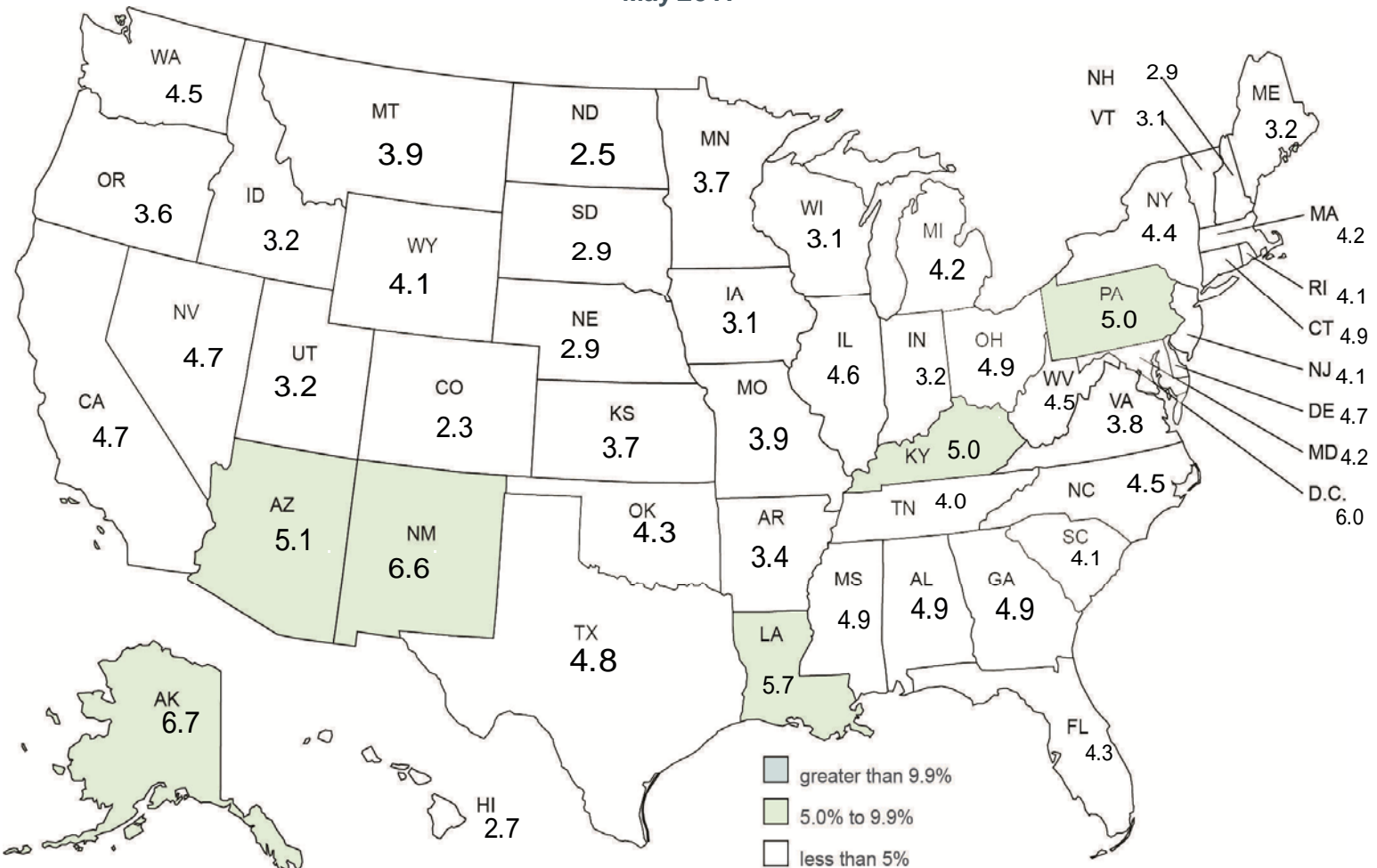
Statewide	5.5 %
Alexandria MSA	6.2 %
Baton Rouge MSA	4.7 %
Hammond MSA	6.1 %
Houma-Thibodaux MSA	6.0 %
Lafayette MSA	6.2 %
Lake Charles MSA	4.3 %
Monroe MSA	5.7 %
New Orleans-Metairie MSA	5.1 %
Shreveport-Bossier City MSA	6.0 %

United States - Louisiana Unemployment Rates (Seasonally Adjusted)



United States Unemployment Rates (Seasonally Adjusted)

May 2017



United States Rate 4.3

CIVILIAN LABOR FORCE (Not Seasonally Adjusted)

Area	May 2017			April 2017			May 2016		
	Employed	Unemployed	Rate	Employed	Unemployed	Rate	Employed	Unemployed	Rate
UNITED STATES	153,407,000	6,572,000	4.1	153,262,000	6,555,000	4.1	151,594,000	7,207,000	4.5
LOUISIANA	1,987,476	116,001	5.5	1,998,036	118,583	5.6	2,001,313	124,825	5.9
ALEXANDRIA MSA	61,158	4,027	6.2	61,572	4,012	6.1	62,163	3,973	6.0
Grant	7,742	545	6.6	7,776	545	6.5	7,856	592	7.0
Rapides	53,416	3,482	6.1	53,796	3,467	6.1	54,307	3,381	5.9
BATON ROUGE MSA	397,376	19,785	4.7	402,196	20,302	4.8	397,683	20,852	5.0
Ascension	58,383	2,825	4.6	59,145	2,917	4.7	58,447	2,918	4.8
East Baton Rouge	221,752	10,876	4.7	224,702	11,115	4.7	222,000	11,439	4.9
East Feliciana	7,745	390	4.8	7,815	430	5.2	7,741	471	5.7
Iberville	13,366	926	6.5	13,474	958	6.6	13,372	944	6.6
Livingston	64,817	3,030	4.5	65,514	3,106	4.5	64,828	3,168	4.7
Pointe Coupee	9,567	579	5.7	9,561	600	5.9	9,539	635	6.2
St. Helena	4,132	296	6.7	4,164	296	6.6	4,129	317	7.1
West Baton Rouge	12,470	634	4.8	12,646	637	4.8	12,488	685	5.2
West Feliciana	5,144	229	4.3	5,175	243	4.5	5,139	275	5.1
HAMMOND MSA	50,968	3,339	6.1	51,139	3,358	6.2	50,790	3,487	6.4
Tangipahoa	50,968	3,339	6.1	51,139	3,358	6.2	50,790	3,487	6.4
HOUMA-THIBODAUX MSA	83,341	5,323	6.0	83,349	5,567	6.3	87,193	6,112	6.6
Lafourche	39,127	2,347	5.7	39,168	2,477	5.9	40,929	2,695	6.2
Terrebonne	44,214	2,976	6.3	44,181	3,090	6.5	46,264	3,417	6.9
LAFAYETTE MSA	199,614	13,082	6.2	199,976	13,486	6.3	202,298	15,420	7.1
Acadia	22,640	1,540	6.4	22,542	1,568	6.5	22,921	1,833	7.4
Iberia	27,608	2,425	8.1	27,517	2,530	8.4	27,919	2,886	9.4
Lafayette	105,752	6,025	5.4	106,299	6,191	5.5	107,275	7,014	6.1
St. Martin	20,888	1,511	6.7	20,947	1,544	6.9	21,212	1,814	7.9
Vermilion	22,726	1,581	6.5	22,671	1,653	6.8	22,971	1,873	7.5
LAKE CHARLES MSA	104,318	4,700	4.3	104,128	4,691	4.3	100,284	4,782	4.6
Calcasieu	100,567	4,556	4.3	100,390	4,533	4.3	96,678	4,624	4.6
Cameron	3,751	144	3.7	3,738	158	4.1	3,606	158	4.2
MONROE MSA	76,317	4,599	5.7	76,795	4,686	5.8	76,202	4,835	6.0
Ouachita	67,527	4,042	5.6	68,047	4,117	5.7	67,447	4,243	5.9
Union	8,790	557	6.0	8,748	569	6.1	8,755	592	6.3
NEW ORLEANS-METARIE MSA	564,668	30,037	5.1	568,705	30,562	5.1	568,183	31,563	5.3
Jefferson	205,256	10,435	4.8	206,893	10,657	4.9	206,628	11,019	5.1
Orleans	169,101	9,560	5.4	170,354	9,645	5.4	170,140	10,000	5.6
Plaquemines	9,778	485	4.7	9,740	504	4.9	9,815	509	4.9
St. Bernard	18,405	1,060	5.4	18,457	1,115	5.7	18,485	1,132	5.8
St. Charles	23,958	1,217	4.8	24,147	1,227	4.8	24,121	1,269	5.0
St. James	8,897	667	7.0	8,953	678	7.0	8,962	721	7.4
St. John the Baptist	18,660	1,318	6.6	18,837	1,329	6.6	18,802	1,319	6.6
St. Tammany	110,613	5,295	4.6	111,324	5,407	4.6	111,230	5,594	4.8
SHREVEPORT-BOSSIER CITY MSA	175,484	11,250	6.0	176,833	11,372	6.0	179,180	11,727	6.1
Bossier	53,015	2,722	4.9	53,412	2,760	4.9	54,132	2,890	5.1
Caddo	98,882	6,678	6.3	99,688	6,731	6.3	100,967	6,787	6.3
De Soto	9,864	711	6.7	9,912	721	6.8	10,069	769	7.1
Webster	13,723	1,139	7.7	13,821	1,160	7.7	14,012	1,281	8.4
NON-MSA PARISHES									
Allen	8,485	479	5.3	8,474	481	5.4	8,428	534	6.0
Assumption	8,355	710	7.8	8,329	764	8.4	8,434	756	8.2
Avoyelles	14,624	1,009	6.5	14,567	1,050	6.7	14,814	1,089	6.8
Beauregard (DeRidder MC)	14,254	868	5.7	14,218	865	5.7	14,348	864	5.7
Bienville	5,290	366	6.5	5,248	394	7.0	5,249	449	7.9
Caldwell	3,689	222	5.7	3,692	254	6.4	3,724	297	7.4
Catahoula	3,251	253	7.2	3,152	269	7.9	3,230	335	9.4
Claiborne	5,541	344	5.8	5,542	363	6.1	5,594	393	6.6
Concordia (Natchez, MS-LAMC)	6,744	619	8.4	6,671	629	8.6	6,751	581	7.9
East Carroll	1,940	268	12.1	1,898	274	12.6	1,924	239	11.0
Evangeline	11,851	792	6.3	11,834	809	6.4	11,896	891	7.0
Franklin	6,739	581	7.9	6,621	613	8.5	6,775	696	9.3
Jackson	6,571	345	5.0	6,538	349	5.1	6,757	398	5.6
Jefferson Davis	12,828	706	5.2	12,776	713	5.3	12,873	803	5.9
La Salle	5,773	302	5.0	5,765	331	5.4	5,882	457	7.2
Lincoln (Ruston MC)	19,643	1,175	5.6	19,776	1,225	5.8	19,488	1,337	6.4
Madison	3,554	323	8.3	3,488	339	8.9	3,540	346	8.9
Morehouse (Bastrop MC)	9,737	945	8.8	9,697	982	9.2	9,719	1,048	9.7
Natchitoches (Natchitoches MC)	15,306	1,040	6.4	15,293	1,043	6.4	15,238	1,118	6.8
Red River	3,659	206	5.3	3,620	226	5.9	3,593	210	5.5
Richland	7,863	531	6.3	7,808	562	6.7	7,901	623	7.3
Sabine	8,594	512	5.6	8,467	521	5.8	8,646	634	6.8
St. Landry (Opelousas MC)	29,906	2,320	7.2	29,918	2,342	7.3	30,393	2,611	7.9
St. Mary (Morgan City MC)	18,898	1,842	8.9	18,980	1,902	9.1	20,057	2,066	9.3
Tensas	1,510	156	9.4	1,430	146	9.3	1,513	160	9.6
Vernon (Fort Polk South MC)	15,180	1,181	7.2	15,079	1,199	7.4	16,062	1,101	6.4
Washington (Bogalusa MC)	15,926	1,021	6.0	16,095	1,088	6.3	15,908	1,162	6.8
West Carroll	3,701	383	9.4	3,617	456	11.2	3,722	471	11.2
Winn	4,821	359	6.9	4,749	360	7.0	4,876	407	7.7

In addition to nine (9) Metropolitan Statistical Areas (MSAs) in Louisiana, there are nine (9) Micropolitan Statistical Areas (MCs). Civilian Labor Force can be derived by adding employed and unemployed. For related information or data, please visit <http://www.bls.gov/au/>.

LOUISIANA - PRIVATE EMPLOYMENT (Not Seasonally Adjusted)

	Average Weekly Earnings (\$)			Average Weekly Hours			Average Hourly Earnings (\$)		
	MAY	APR	MAY	MAY	APR	MAY	MAY	APR	MAY
	2017	2017	2016	2017	2017	2016	2017	2017	2016
Total Private	803.93	808.54	803.37	35.4	35.4	35.5	22.71	22.84	22.63
Goods-Producing	1,133.34	1,088.32	1,120.83	42.8	40.7	41.9	26.48	26.74	26.75
Private Service-Providing	724.75	743.85	728.96	33.6	34.2	34.0	21.57	21.75	21.44
Construction	1,073.53	1,003.31	1,084.54	41.1	38.5	42.2	26.12	26.06	25.70
Manufacturing	1,087.53	1,088.26	1,051.54	42.3	41.6	40.6	25.71	26.16	25.90
Trade, Transportation, and Utilities	705.86	715.88	732.36	35.1	35.3	35.9	20.11	20.28	20.40
Financial Activities	930.65	995.71	969.43	35.0	36.3	37.3	26.59	27.43	25.99
Professional and Business Services	964.84	973.41	951.95	36.7	37.7	37.2	26.29	25.82	25.59
Education and Health Services	757.66	773.75	734.61	33.1	33.7	33.9	22.89	22.96	21.67
Leisure and Hospitality	365.58	371.54	364.46	27.0	27.4	27.3	13.54	13.56	13.35

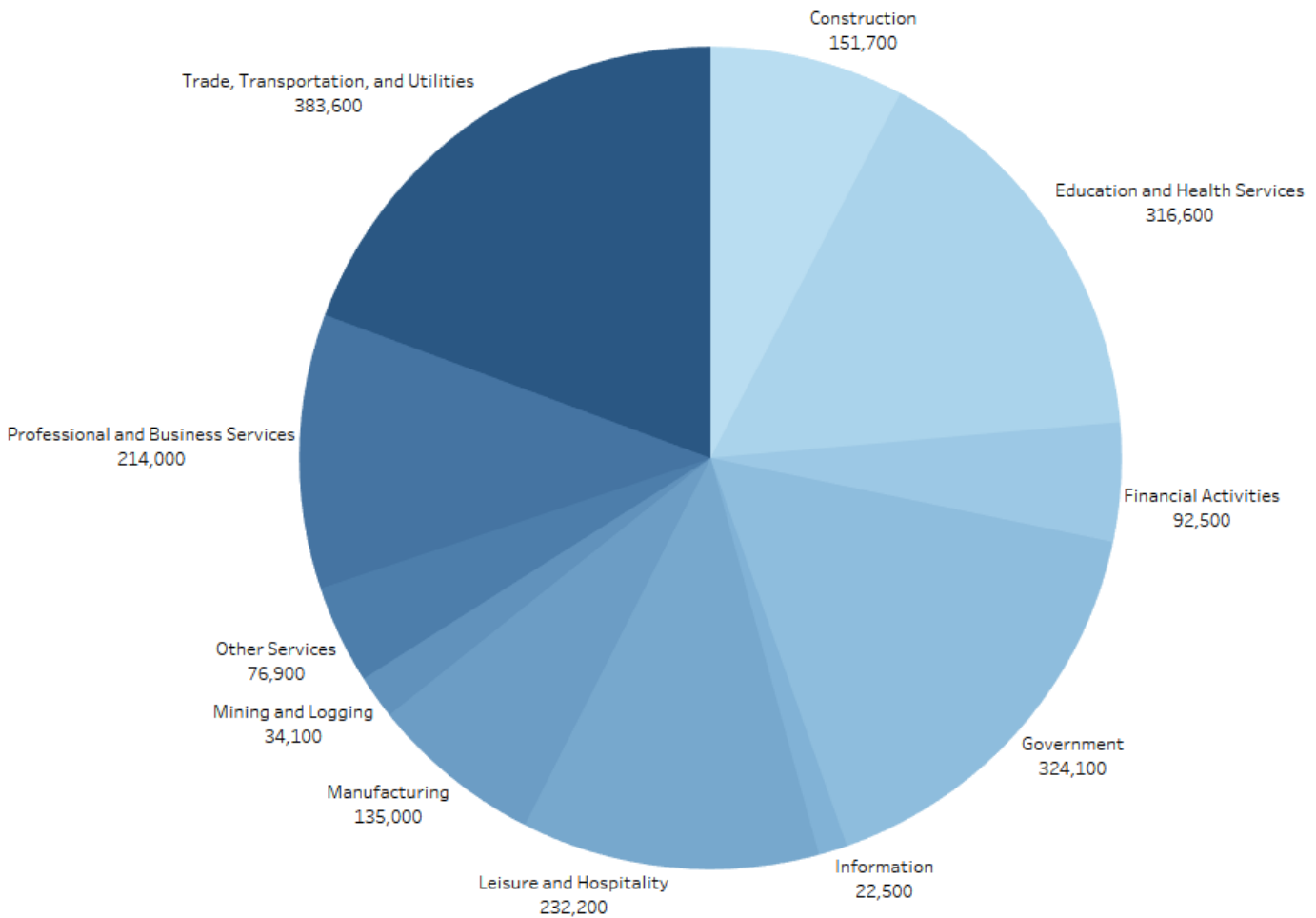
METROPOLITAN STATISTICAL AREAS (MSAs) - PRIVATE EMPLOYMENT
(Not Seasonally Adjusted)

	Average Weekly Earnings (\$)			Average Weekly Hours			Average Hourly Earnings (\$)		
	MAY	APR	MAY	MAY	APR	MAY	MAY	APR	MAY
	2017	2017	2016	2017	2017	2016	2017	2017	2016
Alexandria	625.97	673.30	644.95	32.3	33.8	34.9	19.38	19.92	18.48
Baton Rouge	876.28	833.98	871.88	36.3	35.1	35.5	24.14	23.76	24.56
Hammond	594.75	570.69	544.32	30.8	30.6	31.5	19.31	18.65	17.28
Houma	898.13	864.60	857.68	37.5	36.1	37.8	23.95	23.95	22.69
Lafayette	826.78	844.36	870.98	35.9	36.6	37.0	23.03	23.07	23.54
Lake Charles	830.74	866.02	878.90	35.7	37.2	37.4	23.27	23.28	23.50
Monroe	696.24	693.12	702.81	36.0	36.1	36.7	19.34	19.20	19.15
New Orleans	850.71	866.99	869.71	34.4	34.5	34.9	24.73	25.13	24.92
Shreveport	651.63	678.72	656.52	33.4	33.7	34.7	19.51	20.14	18.92

AVERAGE HOURS AND EARNINGS FOR PRODUCTION WORKERS IN MANUFACTURING
AND SELECTED NONMANUFACTURING INDUSTRIES (Not Seasonally Adjusted)

	Production Workers	Average Weekly Earnings (\$)			Average Weekly Hours			Average Hourly Earnings (\$)		
		MAY	MAY	APR	MAY	MAY	APR	MAY	APR	MAY
		2017	2017	2017	2016	2017	2017	2016	2017	2017
Mining & Logging	24,700	1,445.00	1,440.70	1,521.48	49.2	48.2	46.5	29.37	29.89	32.72
Manufacturing	106,000	925.65	883.48	913.65	42.5	41.4	41.1	21.78	21.34	22.23
Durable Goods	48,600	1,016.95	930.92	859.78	44.1	41.1	38.4	23.06	22.65	22.39
Nondurable Goods	57,400	847.07	842.82	961.35	41.1	41.6	43.5	20.61	20.26	22.10

May 2017 Nonfarm Jobs by NAICS Supersector



*Data from the Current Employment Statistics (CES) program of the Bureau of Labor Statistics (BLS) for May of 2017. Data are seasonally adjusted.

Labor Market Questions and Answers!

When will the new projections data be included in the website?

The new projections data for the short-term 2014-2017 and long-term 2014-2024 are now on the website. http://www.laworks.net/LaborMarketInfo/LMI_employmentprojections.asp

This web page shows industry and occupational information sorted by education and all occupations. The data includes occupations that are the fastest growing and the ones that will add the most jobs.

Glossary & Technical Notes

Average Hourly Earnings/Average Weekly Earnings/ Average Weekly Hours (CES/BLS) - average total money earnings, in the survey week (i.e., the week that includes the twelfth of the month), of production workers plus nonsupervisory workers not in production, including overtime, paid vacation and sick leave.

Civilian Labor Force - that portion of the population, age sixteen or older, which is employed or unemployed and actively seeking employment during the reference week of the twelfth of the month.

Employed - the members of the labor force who worked for pay or profit, or had a job from which they were temporarily absent because of illness, vacation, labor dispute, or other reasons not reflecting a shortage of work, or who worked fifteen hours or more as unpaid workers in an enterprise operated by a member of the family.

Unemployed - the members of the labor force who did not work but were seeking work or were awaiting recall from layoffs or the beginning of a new job within thirty days.

Unemployment Rate - the number of unemployed persons expressed as a percentage of the labor force.

Continued Claim - each week claimed subsequent to the filing of the initial claim for a week of unemployment compensation.

Current Employment Statistics (CES) - estimates of nonfarm employment and production workers hours and earnings by industry. They are produced as part of a nationwide program, in cooperation with the Bureau of Labor Statistics (BLS), for the state and each metropolitan statistical area (MSA) from a sample of employing establishments.

Current Population Survey (CPS) - a monthly household survey of the U.S. population conducted for the Bureau of Labor Statistics (BLS) by the Bureau of the Census, of 60,000 selected households. Respondents are interviewed to obtain information on the employment status of each household member age 16 and over, during the reference week of the twelfth.

Durable Goods - items with a normal life expectancy of three years or more. Automobiles, furniture, household appliances, and mobile homes are examples.

Extended Layoff Event - Fifty or more initial claims for unemployment insurance benefits from an establishment during a 5-week period, with at least 50 workers separated for more than 30 days.

Initial Claims - a new claim, filed to open a claim for unemployment compensation.

Metropolitan Statistical Area (MSA) - a geographical area comprised of a parish generally containing a central city (or twin cities) of 50,000 inhabitants or more and contiguous parishes that are socially and economically integrated with the central city.

Micropolitan Statistical Area (MC) - a geographical area comprised of a parish containing a central city of at least 10,000 but less than 50,000 inhabitants and contiguous parishes that are socially and economically integrated with the central city.

NAICS (North American Industry Classification System) - an industry classification system that groups establishments into industries based on the activities in which they are primarily engaged.

Nonfarm Employment - employment by place of work that does not include the self employed, unpaid family workers, domestics, or agriculture workers. All estimates of nonfarm employment in this publication are in cooperation with the U.S. Department of Labor Bureau of Labor Statistics and include all full-time and part-time workers who were employed during the pay period including the twelfth of the month.

Nondurable Goods - items that generally last for only a short period of time (less than three years). Food, beverages, apparel, and gasoline are common examples.

Seasonally Adjusted - monthly data that is adjusted to minimize the changes in any time series which result from normal annual occurrences such as Christmas, summer vacations, and weather patterns.

Separation - The release of persons from an employer as part of a mass layoff event. Such releases involve both persons subject to recall and those who are terminated by the establishment.

Subsector - refers to the three-digit NAICS code, which will fall under the particular sector. Example: If Manufacturing (31-33) is the industry sector, then Food manufacturing (311), Paper manufacturing (322), Chemical manufacturing (325), Transportation equipment manufacturing (336), are some of the subsectors of manufacturing.

Supersector - refers to these five categories: Total Nonfarm, Total Private, Goods-Producing, Service-Providing, and Private Service-Providing.

Summary Industry Sector - a combination of industry sectors. A summary sector may or may not be published. The summary industry sectors are Mining & Logging; Construction; Manufacturing; Trade, Transportation, & Utilities; Information; Financial Activities; Professional & Business Services; Education & Health Services; Leisure & Hospitality; Other Services; and Government.

Industry Sector - 20 industry sectors based on two-digit NAICS code. They are Agriculture, Forestry, Fishing and Hunting (11), Mining (21), Utilities (22), Construction (23), Manufacturing (31-33), Wholesale Trade (42), Retail Trade (44-45), Transportation and Warehousing (48-49), Information (51), Finance and Insurance (52), Real Estate and Rental and Leasing (53), Professional and Technical Services (54), Management of Companies and Enterprises (55), Administrative and Waste Services (56), Educational Services (61), Health Care and Social Assistance (62), Arts, Entertainment, and Recreation (71), Accommodation and Food Services (72), Other Services (81), and Public Administration (92).

Constraints of the monthly civilian labor force and nonfarm employment estimates:

The civilian labor force estimates are derived by a monthly survey of approximately 723 households throughout Louisiana following the Bureau of Labor Statistics (BLS) methodology. The US Census Bureau conducts the survey by calling randomly selected households and providing BLS with survey results. Households are asked for the number of residents who are sixteen and over and whether they were working or actively looking for work during the week of the twelfth of the month. Responses to these questions become part of the formula to determine the number of people employed and the number of individuals unemployed for the state, MSAs, and each parish every month.

The nonfarm employment estimates are derived from responses received from the monthly BLS survey of approximately 7,000 businesses across the state. Responses capture employment activity during the 12th of each month. This survey relies on responses from these businesses to produce industry employment levels for the state and all metropolitan statistical areas.

Both data sets are comparable with estimates for the U.S., all 50 states, and 387 metropolitan areas across the U.S.

LABOR MARKET INFORMATION WEB LINKS

Civilian Labor Force - LAUS (Local Area Unemployment Statistics) –

Employment, Unemployment and Unemployment Insurance Rate

LA <https://www.louisianaworks.net/hire/altentry.asp?action=lmiguest>

Left menu: Historical Data Analysis – Employment and Wage Data – Labor Force Data – Labor Force Employment and Unemployment (LAUS)

States <http://data.bls.gov/cgi-bin/dsrv?la>

US <http://data.bls.gov/pdq/querytool.jsp?survey=ln>

Consumer Price Index (US) <http://data.bls.gov/cgi-bin/surveymost?cu>

Download Louisiana Workforce Commission’s Labor Market Information Products

LA http://www.laworks.net/Downloads/Downloads_LMI.asp

Employment and Wage Data – Quarterly Census of Employment and Wages (QCEW)

LA <https://www.louisianaworks.net/hire/altentry.asp?action=lmiguest>

Left menu: Historical Data Analysis – Employment and Wage Data – Industry Data – Quarterly Census of Employment and Wages (QCEW)

States & US <http://data.bls.gov/cgi-bin/dsrv?en>

NAICS (North American Industry Classification System) Codes Look-Up Table

<http://www.census.gov/eos/www/naics/>

Nonfarm Employment, Hours and Earnings - CES (Current Employment Statistics)

LA <https://www.louisianaworks.net/hire/altentry.asp?action=lmiguest>

Left menu: Historical Data Analysis – Employment and Wage Data – Industry Data – Current Employment Statistics (CES) – select Show Earnings Data under table

States <http://data.bls.gov/cgi-bin/dsrv?sm>

US <http://data.bls.gov/cgi-bin/dsrv?ce>

Unemployment Insurance Claimants Data (by Occupation) - Unemployment Insurance (UI)

LA <https://www.louisianaworks.net/hire/altentry.asp?action=lmiguest>

Left menu: Historical Data Analysis – Employment and Wage Data – Labor Force Data – Unemployment Insurance Claimants

Unemployment Insurance Claims Data (by Region, Parish, Industry) - UI

LA http://www.laworks.net/LaborMarketInfo/LMI_UIClaimsReportMenu.asp

States & US <http://ows.doleta.gov/unemploy/claims.asp>

Unemployment Rates for all States - LAUS

States <http://www.bls.gov/web/laus/laumstrk.htm>



Office of Occupational Information Services
 Research & Statistics Division
 Post Office Box 94094
 Baton Rouge, LA 70804-9094

Data for: 05/2017



Workforce At A Glance is published monthly by the Louisiana Workforce Commission. The material in this publication is not copyrighted and may be reproduced; however, the LWC would appreciate credit for the material used and a copy of the reprint.

LMI Staff:

Sachin Chintawar, LMI Manager
 Kelsey Canizaro
 Jeffrey Duplantier
 Kelly Ebey

Contributors:

Kelsey Canizaro
 Karen Clark
 Natalie Foster-Lawrence
 Karl Gleichman
 Mark Jones
 Sean Painter
 Tara Robinson
 Marcella Wallin

Contact Us:

Phone (225) 342-3141; Fax (225) 219-7759
 Toll Free (888) 302-7662
 Email lmi@lwc.la.gov

John Bel Edwards, Governor
 State of Louisiana

Ava Dejoie, Executive Director
 Louisiana Workforce Commission

Connect With Us:

Website: <https://www.laworks.net>

 <https://www.facebook.com/LouisianaWorks>

 <https://twitter.com/LouisianaWorks>

 <https://www.linkedin.com/company/louisiana-workforce-commission>

 <http://instagram.com/louisianaworks>