

Louisiana Workforce

at a glance

www.laworks.net

Release Date: June 22, 2011

Data For: May 2011

In This Issue

2 Economic Comparison

3 NSA State & Area Employment

4 - 7 Data Trends (Graphs)

8 - 10 Nonfarm Employment

11 - 12 Unemployment Rates & Civilian Labor Force

13 Average Hours & Earnings

14 UI Claimants & Mass Layoffs

15 - 16 Glossary, Data Constraints, Downloads & Web Links

Statewide Overview

Seasonally adjusted nonfarm employment for Louisiana was estimated at 1,911,700 in May 2011. This represents a gain of 10,100 jobs from the previous month, and a 19,000-job increase from May 2010. Education and health services posted the largest over-the-month change, gaining 4,000 jobs. The government sector posted the largest over-the-year change, losing 15,900 jobs.

Over the month, eight of the 11 industry sectors had increases in employment, while three showed a decrease. After education and health, the largest increase was seen in manufacturing, which added 3,000 jobs from April. Other services saw an increase of 1,300 jobs, while trade, transportation, and utilities rose by 1,000. The mining and logging sector added 900 positions from last month. Construction rose by 600, while information added 500 jobs. Professional and business services showed a slight increase of 100 jobs. The largest over-the-month decline occurred in government, which fell by 1,000. Leisure and hospitality lost 200 jobs from April, while financial activities fell by 100.

Over the year, nine of the 11 sectors added jobs. The largest over-the-year gain occurred in education and health services, which posted an increase of 10,500. Leisure and hospitality also posted a strong gain of 9,100 compared to last year. Manufacturing saw its figure increase by 5,100, while trade, transportation, and utilities added 3,400 jobs. The information sector rose by 2,700 from May 2010, while construction added 1,400 jobs. Professional and business services gained 1,300 jobs over the year, while mining and logging added 900. Finally, other services increased by 500 from May 2010. Government lost 15,900 jobs, while financial activities showed no change.

The May 2011 preliminary seasonally adjusted unemployment rate for Louisiana was 8.2 percent, an increase from the April revised rate of 8.1 percent. The national unemployment rate for May was 9.1 percent, an increase from the April rate of 9.0 percent. Total unemployment in the state for May was 169,767. The state civilian labor force decreased to 2,060,707 with a decrease in total employment to 1,890,940.

Economic Indicators

Seasonally Adjusted	PRELIMINARY MAY 2011	
	United States	Louisiana
Civilian Labor Force		
Labor Force	153,693,000	2,060,707
Employed	139,779,000	1,890,940
Unemployed	13,914,000	169,767
Unemployment Rate	9.1	8.2
Nonfarm Wage and Salary Employment	MAY 2011	MAY 2011
	United States	Louisiana
Total Nonfarm	131,043,000	1,911,700
Mining and Logging	774,000	52,600
Construction	5,529,000	122,300
Manufacturing	11,694,000	143,600
Trade, Transportation, and Utilities	24,872,000	368,700
Information	2,681,000	28,500
Financial Activities	7,612,000	92,500
Professional and Business Services	17,160,000	193,800
Education and Health Services	19,953,000	281,500
Leisure and Hospitality	13,197,000	202,400
Other Services	5,444,000	66,300
Government	22,127,000	359,500
All Employees Average Hours & Earnings		
(Not Seasonally Adjusted)		
Construction	MAY 2011	MAY 2011
	United States	Louisiana
Average Weekly Earnings	\$ 977.18	\$ 940.53
Average Weekly Hours	38.7	42.5
Average Hourly Wages	\$ 25.25	\$ 22.13
Manufacturing		
Average Weekly Earnings	\$ 959.04	\$ 1,035.31
Average Weekly Hours	40.5	41.1
Average Hourly Wages	\$ 23.68	\$ 25.19
Louisiana Unemployment Insurance Activities		
Claims	MAY 2011	
Initial New & Renewals	18,095	
Continued Weekly Intrastate Only	191,565	
Insured Unemployment Rate	2.5	
Benefits		
Number of First Payment	8,474	
Benefits Paid (000's)	\$ 32,247	
Weeks Compensated	166,081	
Average Wkly. Benefit Amount	\$ 195.88	
Average Duration of Claim (weeks)	19.6	
Exhaustions	4,561	
United States Consumer Price Index		
	MAY 2011	
All Urban Consumers	226.0	



The civilian labor force and nonfarm **estimates** are prepared according to Bureau of Labor Statistics (BLS) methodology and are comparable with the U.S. and other states' data. For more information, go to page 15.

Economic Comparison

Seasonally Adjusted	PRELIMINARY MAY 2011		REVISED APRIL 2011		REVISED MAY 2010	
Civilian Labor Force	United States	Louisiana	United States	Louisiana	United States	Louisiana
Labor Force	153,693,000	2,060,707	153,421,000	2,067,257	154,237,000	2,081,431
Employed	139,779,000	1,890,940	139,674,000	1,899,420	139,353,000	1,928,653
Unemployed	13,914,000	169,767	13,747,000	167,837	14,884,000	152,778
Unemployment Rate	9.1	8.2	9.0	8.1	9.6	7.3
Nonfarm Wage and Salary Employment	MAY 2011 United States	MAY 2011 Louisiana	APR 2011 United States	APR 2011 Louisiana	MAY 2010 United States	MAY 2010 Louisiana
Total Nonfarm	131,043,000	1,911,700	130,989,000	1,901,600	130,173,000	1,892,700
Mining and Logging	774,000	52,600	768,000	51,700	698,000	51,700
Construction	5,529,000	122,300	5,527,000	121,700	5,529,000	120,900
Manufacturing	11,694,000	143,600	11,699,000	140,600	11,536,000	138,500
Trade, Transportation, and Utilities	24,872,000	368,700	24,869,000	367,700	24,584,000	365,300
Information	2,681,000	28,500	2,682,000	28,000	2,715,000	25,800
Financial Activities	7,612,000	92,500	7,609,000	92,600	7,640,000	92,500
Professional and Business Services	17,160,000	193,800	17,116,000	193,700	16,640,000	192,500
Education and Health Services	19,953,000	281,500	19,919,000	277,500	19,508,000	271,000
Leisure and Hospitality	13,197,000	202,400	13,203,000	202,600	12,995,000	193,300
Other Services	5,444,000	66,300	5,441,000	65,000	5,348,000	65,800
Government	22,127,000	359,500	22,156,000	360,500	22,980,000	375,400
All Employees Average Hours & Earnings						
Construction	United States (Not Seasonally Adjusted)			Louisiana (Not Seasonally Adjusted)		
	MAY 2011	APR 2011	MAY 2010	MAY 2011	APR 2011	MAY 2010
Average Weekly Earnings	\$ 977.18	\$ 965.07	\$ 949.02	\$ 940.53	\$ 925.99	\$ 894.67
Average Weekly Hours	38.7	38.1	37.9	42.5	41.9	43.6
Average Hourly Wages	\$ 25.25	\$ 25.33	\$ 25.04	\$ 22.13	\$ 22.10	\$ 20.52
Manufacturing						
Average Weekly Earnings	\$ 959.04	\$ 953.10	\$ 944.06	\$ 1,035.31	\$ 1,025.00	\$ 1,004.36
Average Weekly Hours	40.5	40.3	40.5	41.1	41.0	42.2
Average Hourly Wages	\$ 23.68	\$ 23.65	\$ 23.31	\$ 25.19	\$ 25.00	\$ 23.80
Louisiana Unemployment Insurance Activities						
Claims		MAY 2011	APR 2011	MAY 2010	% Change From	
Initial New & Renewals		18,095	14,559	18,317	APR 2011	MAY 2010
Continued Weekly Intrastate Only		191,565	155,603	237,635	23.1	-19.4
Insured Unemployment Rate*		2.5	2.6	3.2	-4.3	-21.6
Benefits						
Number of First Payment		8,474	7,007	9,436	20.9	-10.2
Benefits Paid (000's)		\$ 32,247	\$ 26,758	\$ 43,138	20.5	-25.2
Weeks Compensated		166,081	137,129	207,403	21.1	-19.9
Average Wkly. Benefit Amount		\$ 195.88	\$ 196.94	\$ 210.15	-0.5	-6.8
Average Duration of Claim (w eeks)		19.6	19.6	22.0	0.1	-10.8
Exhaustions		4,561	4,065	6,952	12.2	-34.4
* Insured unemployment rate is for the week including the 12th of the month.						
United States Consumer Price Index						
	MAY 2011	% Change From:		APR 2011	% Change From:	
	Index	Prior Month	Prior Year	Index	Prior Month	Prior Year
All Urban Consumers	226.0	0.5	3.6	224.9	0.6	3.2

Not Seasonally Adjusted State and Area Employment

Not seasonally adjusted nonfarm employment for Louisiana was estimated at 1,914,600 for May 2011. Over the month, employment gained 10,200 jobs from April, while over the year employment gained 15,000 jobs. Goods-producing employment added 4,700 jobs over the month, while the service-providing employment added 5,500 jobs when compared to April. Over the year, goods-producing industries gained 6,500 jobs while the service-providing sector gained 8,500.

Total nonfarm employment in May for the Alexandria MSA was 65,000, a decrease of 200 jobs from April, but a gain of 1,400 from a year ago. The goods-producing sector gained 100 jobs over the month, and added 300 jobs over the year. Service-providing employment lost 300 jobs from April but gained 1,100 jobs from May 2010.

Total nonfarm employment for the Baton Rouge MSA was estimated at 365,000 for May 2011. Over the month, the MSA showed an increase of 200 jobs, while over the year, nonfarm employment decreased by 900 jobs. Goods-producing employment showed a loss of 200 jobs from last month, but a gain of 400 from last year. The service-providing sector gained 400 jobs from April, while losing 1,300 jobs over the year.

The Houma MSA nonfarm employment was estimated at 95,100 for May 2011. This shows a gain over the month of 1,100 jobs and an over-the-year gain of 2,400. Goods-producing gained 400 jobs over the month, while adding 700 jobs from last year. Service-providing added 700 jobs from last month and 1,700 over the year.

Total nonfarm employment for the Lafayette MSA was estimated at 148,900 for May 2011. This represents a gain from April of 1,400 jobs but a decrease of 100 jobs from last year. Over the month, goods-producing employment rose by 400, while the service-providing sector added 1,000 jobs. Over the year, goods-producing employment increased by 400 jobs, while the service-providing sector decreased by 500 jobs.

Total nonfarm employment for the Lake Charles MSA was 92,300 for May 2011. This represents a gain of 1,300 jobs from April and an increase of 1,900 jobs over the year. Over the month, the goods-producing sector added 100 jobs, while the service-providing sector added 1,200 jobs. The goods-producing sector lost 200 jobs from last May, while the service-providing sector increased by 2,100 jobs over the year.

Total nonfarm employment for the Monroe MSA was estimated at 75,800 for May 2011. This represents a loss of 800 jobs over the month and a loss of 900 jobs over the year. The goods-producing sector added 100 jobs over the month, while adding 200 jobs over the year. The service-providing sector lost 900 jobs from April and 1,100 jobs over the year.

Total nonfarm employment for the New Orleans MSA was 528,300 for May 2011. Over the month the MSA added 1,300 jobs, and over the year increased by 4,900 positions. Goods-producing employment showed a gain of 900 from last month, but declined by 500 positions from last year. The service-providing sector rose by 400 jobs from April and added 5,400 jobs from May 2010.

Total nonfarm employment for the Shreveport MSA was 182,200 for May 2011, an increase of 1,400 jobs from last month and a gain of 4,800 from May 2010. Goods-producing employment showed an increase of 600 from April and a gain of 2,600 from May 2010. Service-providing employment added 800 jobs over the month and 2,200 jobs compared to last year.

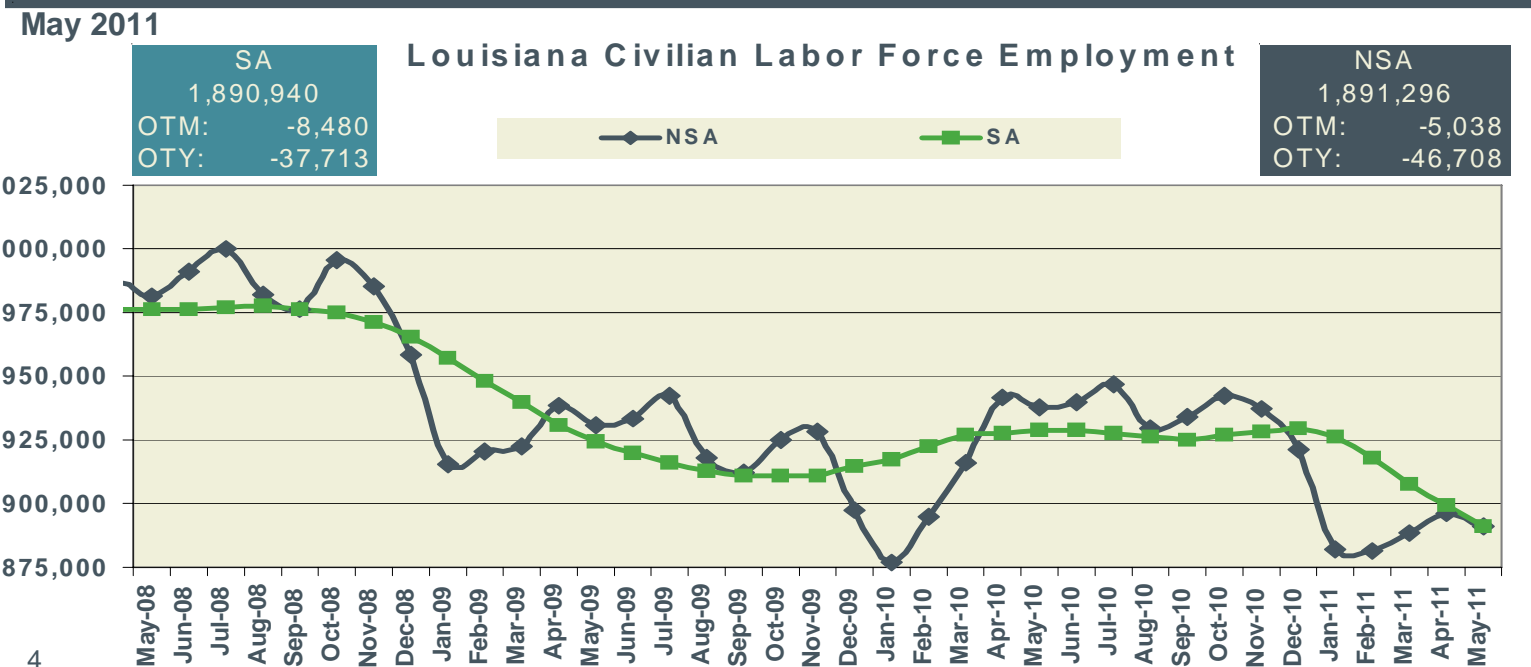
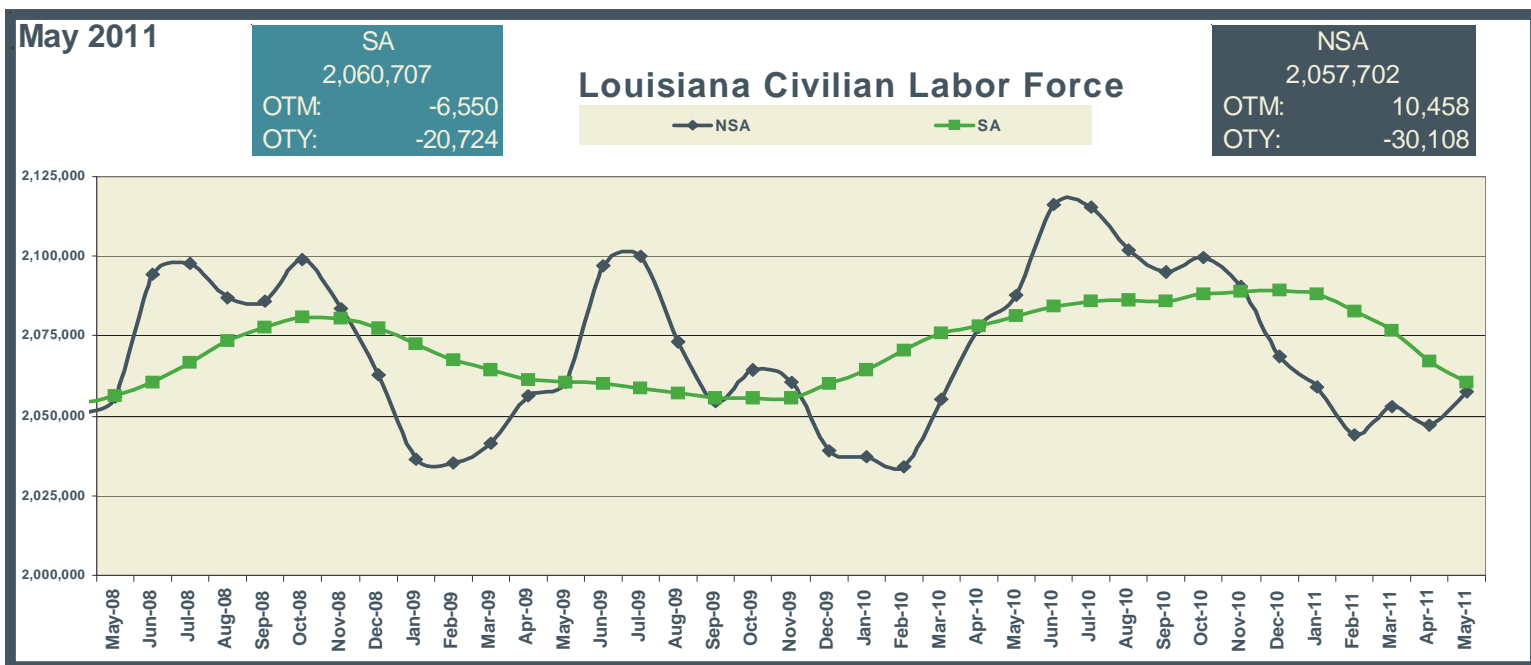
Keys to Graphs

The following graphs have been designed to reflect the over-the-year trends in the statistical data. Below are the most frequently used abbreviations.

- OTM over-the-month change in employment
- OTY over-the-year change in employment
- SA seasonally adjusted estimates
- NSA not seasonally adjusted estimates

Graphs for statewide reflect seasonally adjusted (SA) estimates compared to not seasonally adjusted (NSA) data.

Metropolitan Statistical Areas (MSAs) graphs denote nonfarm employment levels compared to a three year red trend line of the estimated employment. The navy lines in the graphs are the over-the-month changes for each year.

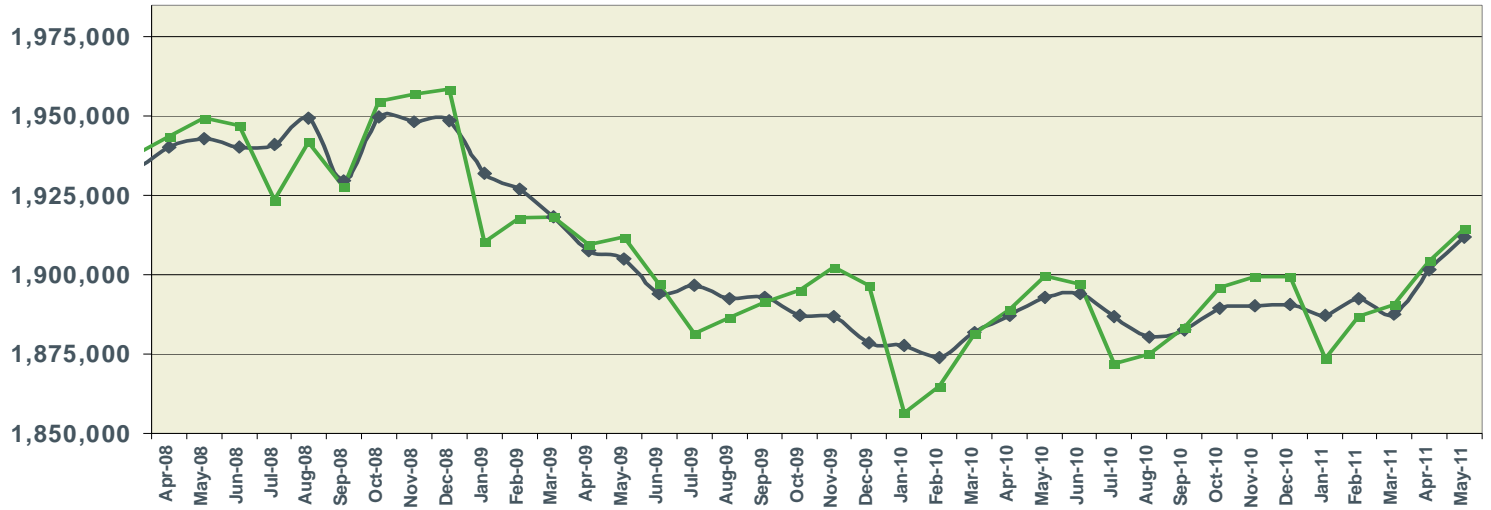


May 2011

SA
1,911,700
OTM: 10,100
OTY: 19,000

Louisiana Nonfarm Employment

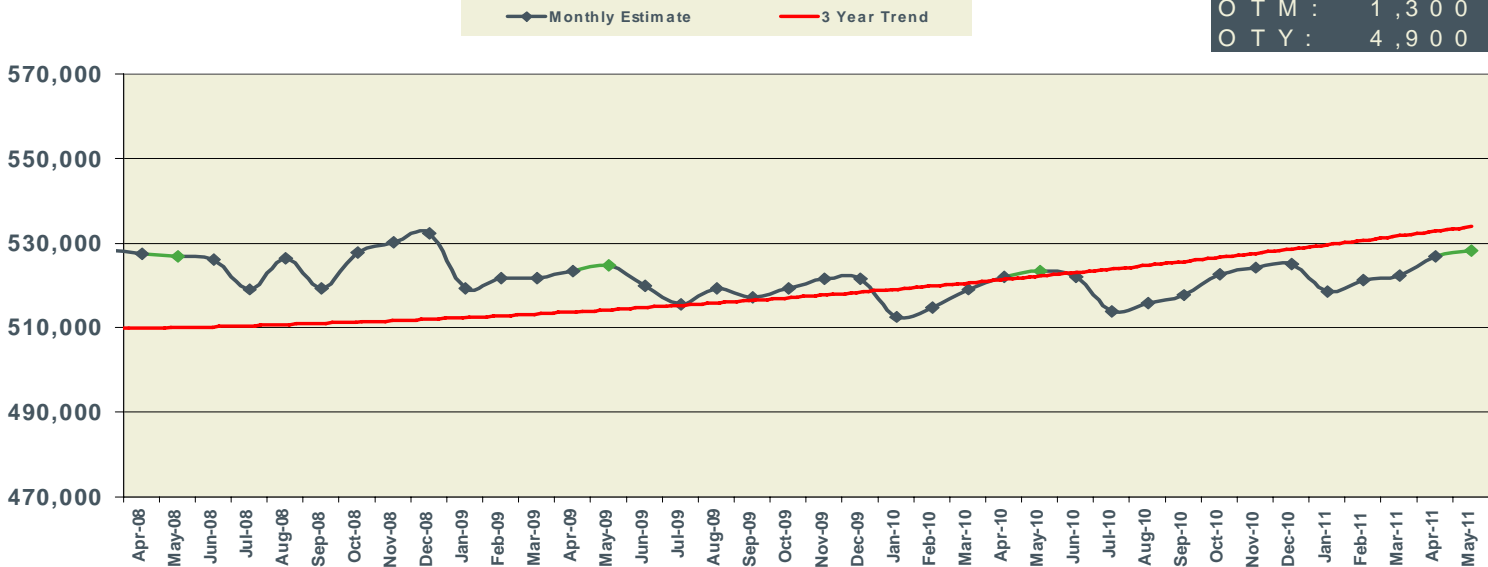
NSA
1,914,600
OTM: 10,200
OTY: 15,000



May 2011

New Orleans MSA Nonfarm Employment

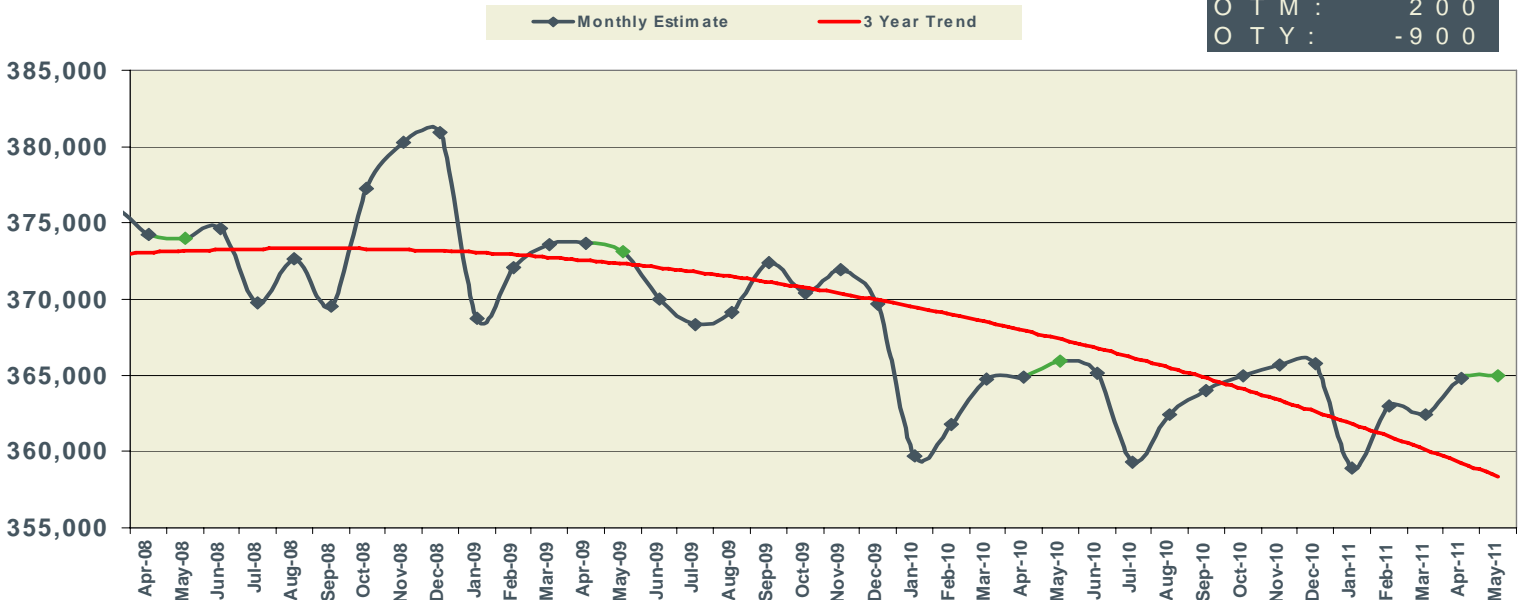
NSA
528,300
OTM: 1,300
OTY: 4,900



May 2011

Baton Rouge MSA Nonfarm Employment

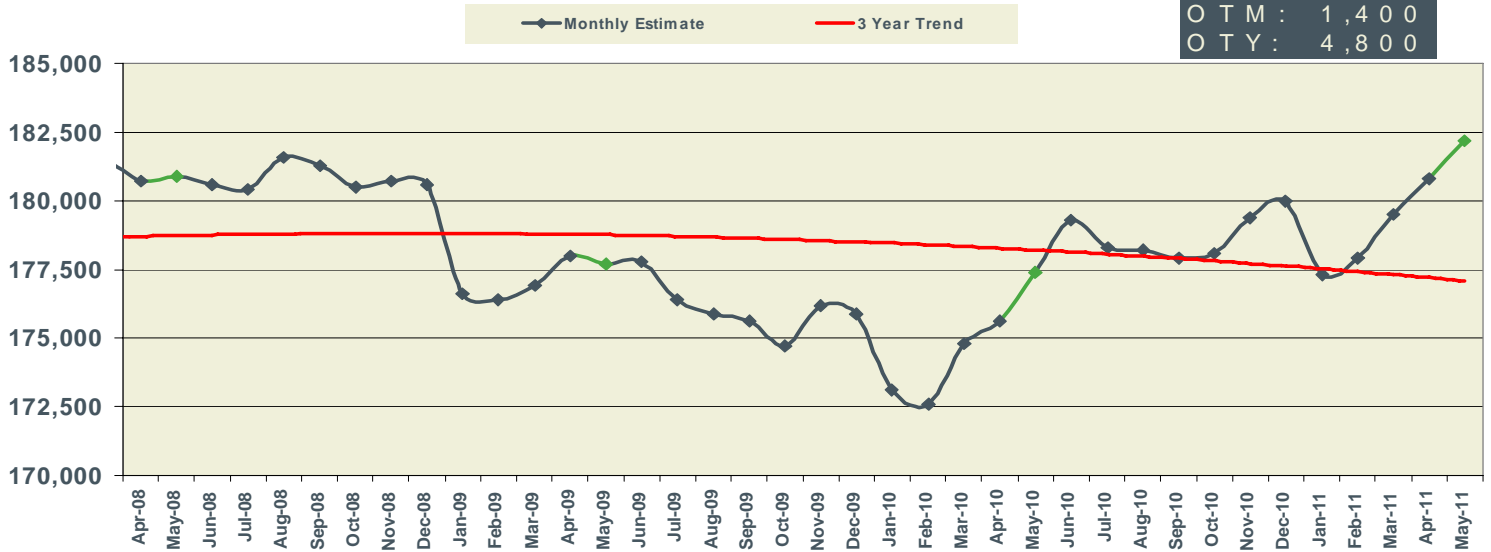
NSA
365,000
OTM: 200
OTY: -900



May 2011

Shreveport MSA Nonfarm Employment

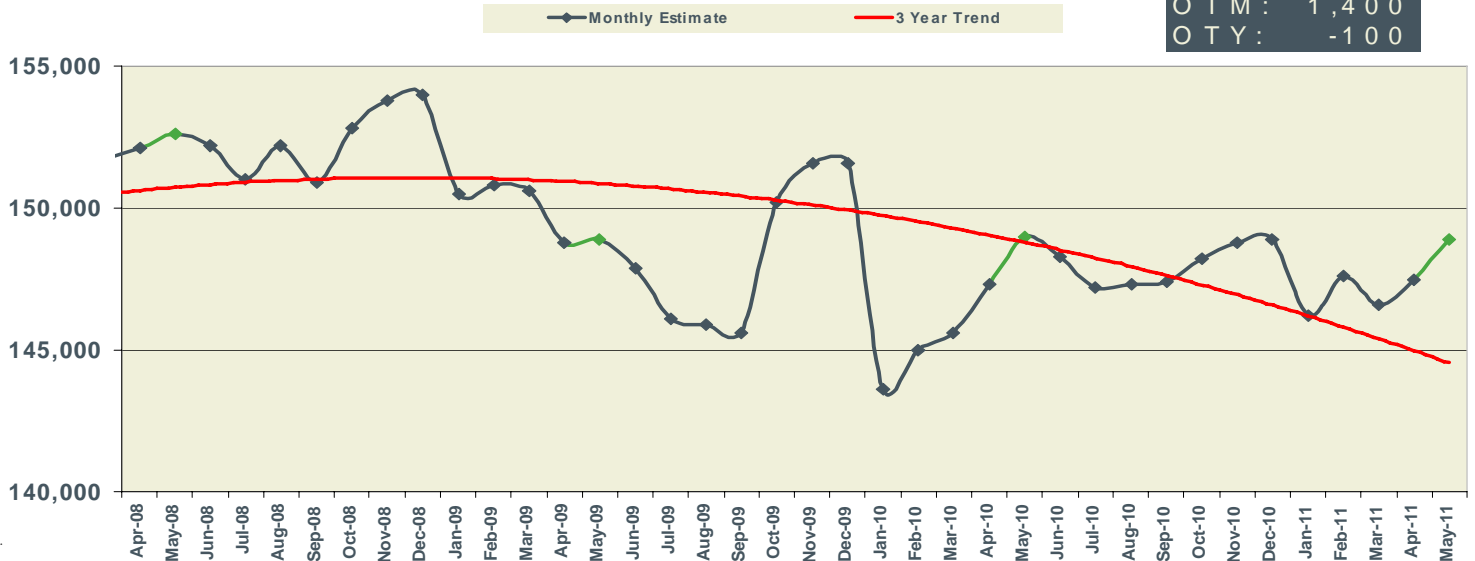
NSA
182,200
OTM : 1,400
OTY : 4,800



May 2011

Lafayette MSA Nonfarm Employment

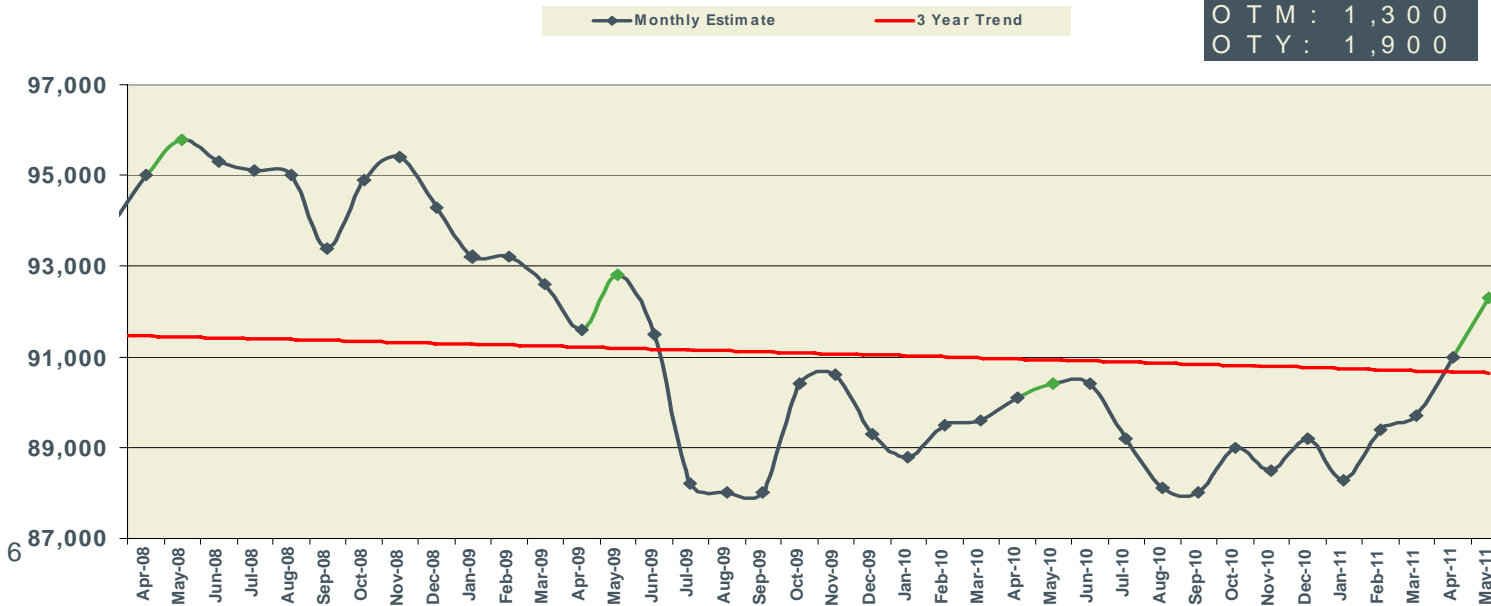
NSA
148,900
OTM : 1,400
OTY : -100



May 2011

Lake Charles MSA Nonfarm Employment

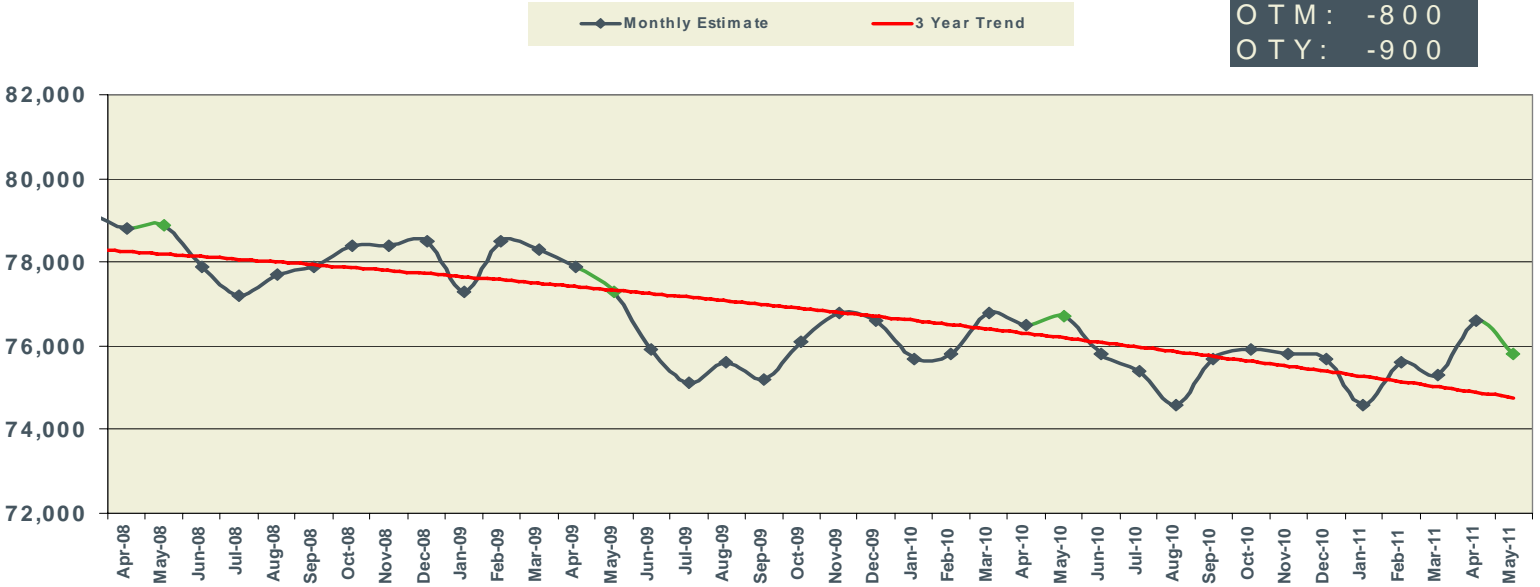
NSA
92,300
OTM : 1,300
OTY : 1,900



May 2011

Monroe MSA Nonfarm Employment

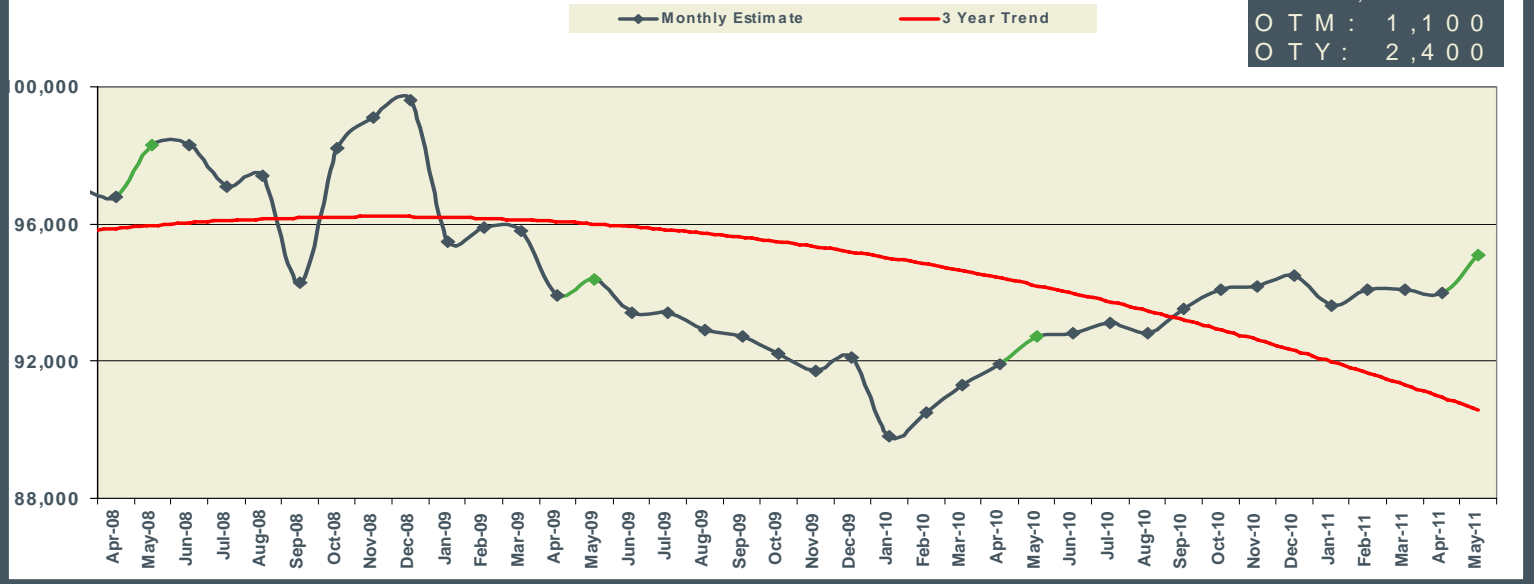
NSA
75,800
OTM: -800
OTY: -900



May 2011

Houma MSA Nonfarm Employment

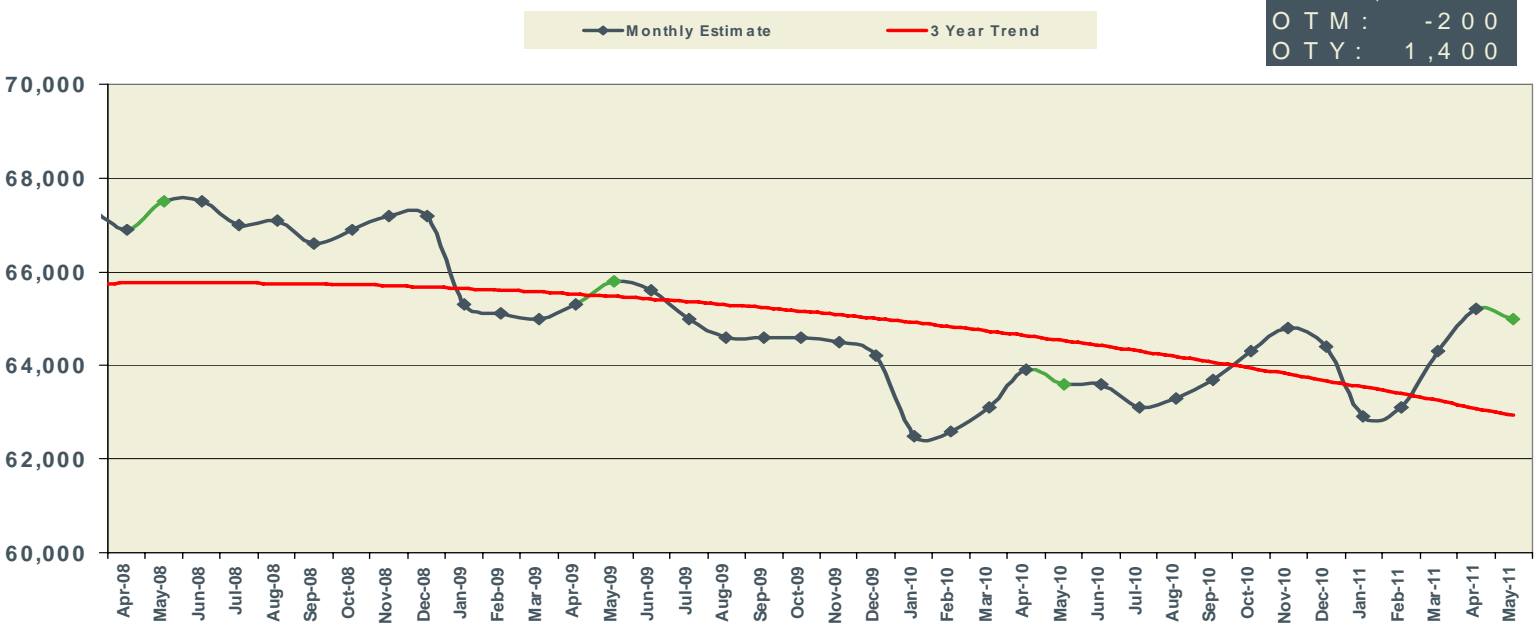
NSA
95,100
OTM: 1,100
OTY: 2,400



May 2011

Alexandria MSA Nonfarm Employment

NSA
65,000
OTM: -200
OTY: 1,400



LOUISIANA

NEW ORLEANS-
METAIRIE-KENNER

BATON ROUGE MSA

*Not Seasonally Adjusted*PREL
MAY
2011REV
APR
2011REV
MAY
2010PREL
MAY
2011REV
APR
2011REV
MAY
2010PREL
MAY
2011REV
APR
2011REV
MAY
2010

	PREL MAY 2011	REV APR 2011	REV MAY 2010	PREL MAY 2011	REV APR 2011	REV MAY 2010	PREL MAY 2011	REV APR 2011	REV MAY 2010
Total Nonfarm	1,914,600	1,904,400	1,899,600	528,300	527,000	523,400	365,000	364,800	365,900
Total Private	1,553,400	1,542,000	1,521,600	447,800	446,300	438,700	287,500	286,900	287,600
Goods-Producing	318,000	313,300	311,500	70,200	69,300	70,700	64,400	64,600	64,000
Mining & Logging	52,800	51,800	52,000	7,500	7,500	7,600	2,000	1,900	1,900
Oil & Gas Extraction	8,600	8,600	8,400	2,900	2,800	2,800			
Crude Petroleum & Natural Gas Extraction	8,000	7,900	7,900						
Support Activities for Mining	39,900	39,400	39,700						
Drilling Oil & Gas Wells	9,400	9,400	9,100						
Construction	122,500	121,200	121,000	30,700	30,900	30,200	37,300	37,800	37,300
Construction of Buildings	20,600	20,600	22,500				6,700	6,900	7,200
Residential Building Construction	5,900	5,800	6,200						
Nonresidential Building Construction	14,700	14,800	16,300				6,300	6,500	6,300
Heavy & Civil Engineering Construction	39,700	39,000	38,600	8,600	8,600	8,800	13,000	13,200	13,000
Utility System Construction	19,000	18,900	18,200						
Specialty Trade Contractors	62,200	61,600	59,900	16,000	16,500	15,900	17,600	17,700	17,100
Manufacturing	142,700	140,300	138,500	32,000	30,900	32,900	25,100	24,900	24,800
Durable Goods	71,500	70,800	70,500	15,400	15,000	16,800			
Transportation Equipment Manufacturing	16,300	16,000	18,000	7,200	6,700	8,700			
Ship & Boat Building	11,200	11,000	12,200	5,700	5,400	6,400			
Nondurable Goods	71,200	69,500	68,000	16,600	15,900	16,100	16,900	16,700	16,700
Food Manufacturing	15,900	15,400	16,100						
Paper Manufacturing	7,100	7,200	6,900						
Petroleum & Coal Products Mfg. & Chemical Mfg.									
Petroleum & Coal Products Manufacturing	11,600	11,500	11,500						
Chemical Manufacturing	23,200	23,100	22,500	4,700	4,600	4,400	9,900	9,800	9,400
Basic Chemical Manufacturing	12,200	12,200	12,100				5,500	5,500	5,500
Service-Providing	1,596,600	1,591,100	1,588,100	458,100	457,700	452,700	300,600	300,200	301,900
Private Service-Providing	1,235,400	1,228,700	1,210,100	377,600	377,000	368,000	223,100	222,300	223,600
Trade, Transportation, & Utilities	368,700	366,500	363,800	104,100	103,800	102,300	64,300	64,300	64,800
Wholesale Trade	68,900	68,500	70,300	22,000	22,000	22,100	12,100	12,100	12,500
Merchant Wholesalers, Durable Goods	36,700	36,900	36,600	10,400	10,500	10,700			
Merchant Wholesalers, Nondurable Goods	23,800	23,600	24,900	7,700	7,600	7,700			
Retail Trade	219,900	219,300	216,900	57,500	57,400	56,200	40,500	40,600	40,600
Clothing & Clothing Accessories Stores, General Merchandise									
Motor Vehicle & Parts Dealers	25,700	25,700	25,900						
Building Material & Garden Equipment & Supplies Dealers	20,500	20,400	20,300						
Food & Beverage Stores	35,300	35,100	35,800						
Grocery Stores	30,300	30,200	31,100	8,200	7,900	8,300	5,600	5,500	5,700
Health & Personal Care Stores	15,400	15,300	15,500						
Gasoline Stations	18,600	18,400	18,400						
Clothing and Clothing Accessories Stores	17,600	17,600	17,800						
General Merchandise Stores	53,000	52,800	51,000	12,800	12,800	11,900	9,400	9,300	9,300
Department Stores	16,700	16,700	16,200				2,400	2,400	2,600
Transportation, Warehousing, & Utilities	79,900	78,700	76,600	24,600	24,400	24,000	11,700	11,600	11,700
Transportation and Warehousing	70,800	69,500	67,200						
Truck Transportation	16,200	16,100	16,300						
Support Activities for Transportation	19,500	19,200	18,800						
Information	28,400	28,000	25,800	8,900	8,900	7,500	5,200	5,200	5,200
Telecommunications	10,300	10,200	10,700						
Financial Activities	92,300	92,500	92,500	25,700	25,600	26,100	16,700	16,700	17,200
Finance & Insurance	62,100	62,000	62,200	18,100	18,100	18,600	11,800	11,900	12,300
Credit Intermediation & Related Activities	31,600	31,700	32,400	7,400	7,400	7,700			
Depository Credit Intermediation	22,700	22,700	23,200	5,700	5,700	5,900	4,300	4,300	4,500
Insurance Carriers & Related Activities	26,400	26,400	25,500						
Real Estate & Rental & Leasing	30,200	30,500	30,300						
Professional & Business Services	193,300	193,600	193,300	68,100	66,500	69,000	40,900	41,800	41,700
Professional, Scientific, & Technical Services	79,700	80,900	78,700	29,200	28,600	28,900	18,400	19,200	18,400
Legal Services	18,600	19,200	19,100	8,300	8,200	8,300			
Accounting, Tax Preparation, Bookkeeping & Payroll Services	10,000	11,700	10,000						
Architectural, Engineering, & Related Services	23,900	23,700	23,000						
Management of Companies & Enterprises	23,800	23,600	23,800	8,100	7,900	8,100			
Admin. & Support & Waste Mgmt. & Remediation Serv.	89,800	89,100	90,800	30,800	30,000	32,000	18,100	18,000	18,500
Administrative & Support Services	79,400	79,100	82,400	28,100	27,500	29,800			
Employment Services	29,400	28,800	28,900	10,700	10,400	10,800			
Services to Buildings & Dwellings	19,900	19,500	19,900						
Education & Health Services	281,200	278,700	271,900	76,600	77,800	74,900	49,500	49,000	49,200
Educational Services	36,900	38,700	36,800	18,800	20,700	19,800			
Colleges, Universities, & Professional Schools	17,800	21,300	18,700	10,600	11,900	11,200			
Health Care & Social Assistance	244,300	240,000	235,100	57,800	57,100	55,100	43,000	42,400	42,200
Ambulatory Health Care Services	88,600	86,500	85,500	21,700	21,400	21,100	18,000	17,800	17,400
Offices of Physicians	34,200	33,300	33,400						
Home Health Care Services	22,100	21,700	21,500						
Hospitals	67,400	66,500	65,300	18,700	18,600	17,900	11,700	11,600	11,500
Nursing & Residential Care Facilities	42,400	42,200	40,900						
Nursing Care Facilities	26,300	26,000	25,500						
Social Assistance	45,900	44,800	43,400						
Leisure & Hospitality	204,900	203,600	196,700	75,200	75,500	69,600	33,700	32,600	32,600
Arts, Entertainment, & Recreation	28,900	27,400	28,600	10,400	10,200	9,700			
Amusement, Gambling, & Recreation Industries	23,200	21,500	22,500	6,200	6,000	6,000			
Gambling Industries	10,300	10,300	10,600	2,100	2,100	2,000			
Accommodation & Food Services	176,000	176,200	168,100	64,800	65,300	59,900	27,700	27,700	27,600
Accommodation	29,500	28,800	27,100	13,700	13,700	13,000			
Food Services & Drinking Places	146,500	147,400	141,000	51,100	51,600	46,900	25,900	25,800	25,400
Other Services	66,600	65,800	66,100	19,000	18,900	18,600	12,800	12,700	12,900
Repair & Maintenance	19,700	19,200	19,500						
Automotive Repair & Maintenance	10,800	10,700	10,900						
Personal & Laundry Services	15,600	15,500	15,600						
Government	361,200	362,400	378,000	80,500	80,700	84,700	77,500	77,900	78,300
Federal Government	31,400	31,600	39,400	12,300	12,400	14,500	2,900	3,000	4,200
State Government	110,300	111,600	112,800	18,900	19,200	20,200	40,500	40,900	40,300
Local Government	219,500	219,200	225,800	49,300	49,100	50,000	34,100	34,000	33,800

LOUISIANA & MSAs NONFARM EMPLOYMENT

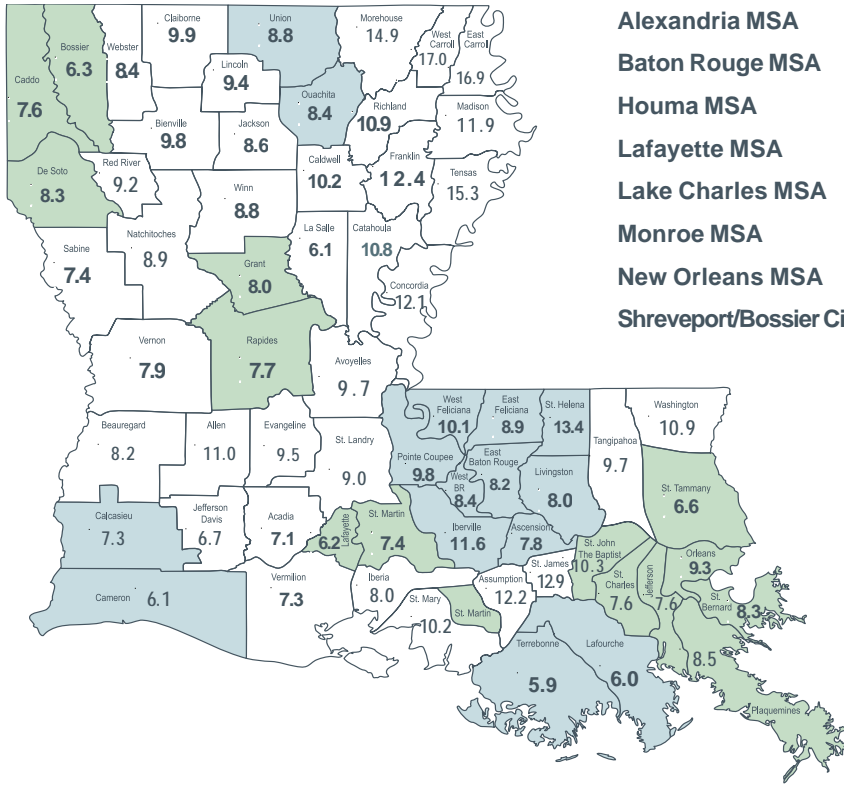
9

Not Seasonally Adjusted	SHREVEPORT-BOSSIER CITY MSA			LAFAYETTE MSA			LAKE CHARLES MSA		
	PREL	REV	REV	PREL	REV	REV	PREL	REV	REV
	MAY 2011	APR 2011	MAY 2010	MAY 2011	APR 2011	MAY 2010	MAY 2011	APR 2011	MAY 2010
Total Nonfarm	182,200	180,800	177,400	148,900	147,500	149,000	92,300	91,000	90,400
Total Private	146,400	145,000	141,200	130,900	129,500	130,300	76,500	75,200	73,300
Goods-Producing	26,700	26,100	24,100	31,500	31,100	31,100	18,400	18,300	18,600
Mining & Logging	6,400	6,300	5,600	15,700	15,600	15,200	1,100	1,100	1,200
Oil & Gas Extraction									
Crude Petroleum & Natural Gas Extraction									
Support Activities for Mining				13,300	12,900	13,200			
Drilling Oil & Gas Wells									
Construction	9,700	9,500	8,400	5,700	5,700	6,500	7,900	7,900	8,200
Construction of Buildings									
Residential Building Construction									
Nonresidential Building Construction									
Heavy & Civil Engineering Construction							3,500	3,500	3,900
Utility System Construction									
Specialty Trade Contractors									
Manufacturing	10,600	10,300	10,100	10,100	9,800	9,400	9,400	9,300	9,200
Durable Goods									
Transportation Equipment Manufacturing	1,100	1,100	1,300						
Ship & Boat Building									
Nondurable Goods							7,100	7,000	7,000
Food Manufacturing									
Paper Manufacturing									
Petroleum & Coal Products Mfg. & Chemical Mfg.							6,600	6,500	6,400
Petroleum & Coal Products Manufacturing									
Chemical Manufacturing									
Basic Chemical Manufacturing									
Service-Providing	155,500	154,700	153,300	117,400	116,400	117,900	73,900	72,700	71,800
Private Service-Providing	119,700	118,900	117,100	99,400	98,400	99,200	58,100	56,900	54,700
Trade, Transportation, & Utilities	34,100	33,700	33,000	29,000	28,700	28,900	16,500	16,400	16,200
Wholesale Trade	6,600	6,500	6,400	7,600	7,600	7,600			
Merchant Wholesalers, Durable Goods									
Merchant Wholesalers, Nondurable Goods									
Retail Trade	21,100	20,900	20,500	17,500	17,300	17,500	10,200	10,100	10,200
Clothing & Clothing Accessories Stores, General Merchandise							3,400	3,300	3,400
Motor Vehicle & Parts Dealers									
Building Material & Garden Equipment & Supplies Dealers									
Food & Beverage Stores									
Grocery Stores									
Health & Personal Care Stores									
Gasoline Stations									
Clothing and Clothing Accessories Stores									
General Merchandise Stores	4,600	4,600	4,500	3,700	3,600	3,500			
Department Stores									
Transportation, Warehousing, & Utilities	6,400	6,300	6,100	3,900	3,800	3,800			
Transportation and Warehousing									
Truck Transportation									
Support Activities for Transportation									
Information	4,700	4,700	3,900	2,600	2,600	2,700			
Telecommunications									
Financial Activities	7,100	7,100	7,000	8,300	8,200	8,300			
Finance & Insurance									
Credit Intermediation & Related Activities									
Depository Credit Intermediation									
Insurance Carriers & Related Activities									
Real Estate & Rental & Leasing									
Professional & Business Services	16,900	16,700	16,300	17,100	17,000	17,000	6,800	6,800	6,800
Professional, Scientific, & Technical Services				8,100	8,000	7,800			
Legal Services									
Accounting, Tax Preparation, Bookkeeping & Payroll Services									
Architectural, Engineering, & Related Services									
Management of Companies & Enterprises									
Admin. & Support & Waste Mgmt. & Remediation Serv.	9,900	9,900	9,900						
Administrative & Support Services									
Employment Services									
Services to Buildings & Dwellings									
Education & Health Services	26,400	26,400	26,400	22,300	22,000	21,900			
Educational Services									
Colleges, Universities, & Professional Schools									
Health Care & Social Assistance	25,500	25,300	25,000	20,300	19,900	19,800			
Ambulatory Health Care Services									
Offices of Physicians									
Home Health Care Services									
Hospitals	9,700	9,700	9,600	5,300	5,200	5,400	3,500	3,500	3,500
Nursing & Residential Care Facilities									
Nursing Care Facilities									
Social Assistance									
Leisure & Hospitality	22,400	22,200	22,500	15,300	15,100	15,500	12,000	11,900	11,700
Arts, Entertainment, & Recreation	5,900	5,600	6,100						
Amusement, Gambling, & Recreation Industries	5,700	5,600	5,700						
Gambling Industries	4,300	4,300	4,500						
Accommodation & Food Services	16,500	16,600	16,400	13,400	13,200	13,400	10,500	10,400	10,200
Accommodation									
Food Services & Drinking Places	13,600	13,600	13,400	12,300	12,200	12,400			
Other Services	8,100	8,100	8,000	4,800	4,800	4,900			
Repair & Maintenance									
Automotive Repair & Maintenance									
Personal & Laundry Services									
Government	35,800	35,800	36,200	18,000	18,000	18,700	15,800	15,800	17,100
Federal Government	4,800	4,800	5,200	1,100	1,100	1,700	600	600	1,100
State Government	11,300	11,400	10,900	5,900	5,900	5,900	4,100	4,000	4,200
Local Government	19,700	19,600	20,100	11,000	11,000	11,100	11,100	11,200	11,800

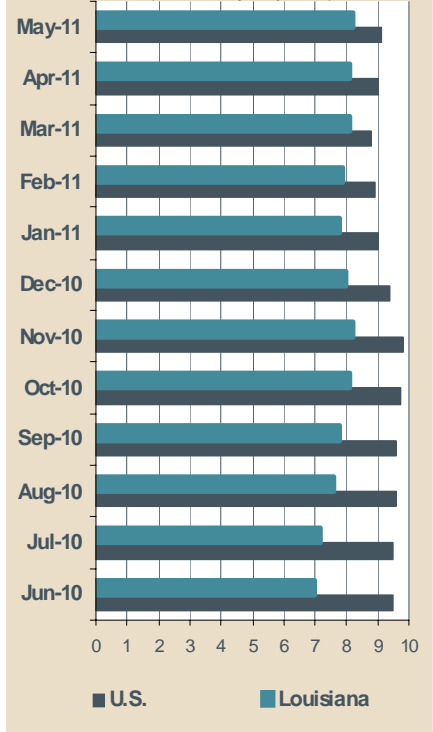
	MONROE MSA			HOUMA-BAYOU CANE- THIBODAU MSA			ALEXANDRIA MSA		
	PREL	REV	REV	PREL	REV	REV	PREL	REV	REV
	MAY 2011	APR 2011	MAY 2010	MAY 2011	APR 2011	MAY 2010	MAY 2011	APR 2011	MAY 2010
<i>Not Seasonally Adjusted</i>									
Total Nonfarm	75,800	76,600	76,700	95,100	94,000	92,700	65,000	65,200	63,600
Total Private	61,200	62,600	61,400	81,200	80,100	77,900	50,100	50,200	48,300
Goods-Producing	10,500	10,400	10,300	20,500	20,100	19,800	8,500	8,400	8,200
Mining & Logging				5,700	5,700	5,900			
Oil & Gas Extraction									
Crude Petroleum & Natural Gas Extraction									
Support Activities for Mining				4,700	4,700	5,000			
Drilling Oil & Gas Wells									
Construction				5,900	5,800	5,200			
Construction of Buildings									
Residential Building Construction									
Nonresidential Building Construction									
Heavy & Civil Engineering Construction									
Utility System Construction									
Specialty Trade Contractors									
Manufacturing	7,000	6,900	6,800						
Durable Goods									
Transportation Equipment Manufacturing									
Ship & Boat Building									
Nondurable Goods	5,200	5,100	5,000						
Food Manufacturing									
Paper Manufacturing									
Petroleum & Coal Products Mfg. & Chemical Mfg.									
Petroleum & Coal Products Manufacturing									
Chemical Manufacturing									
Basic Chemical Manufacturing									
Service-Providing	65,300	66,200	66,400	74,600	73,900	72,900	56,500	56,800	55,400
Private Service-Providing	50,700	51,600	51,100	60,700	60,000	58,100	41,600	41,800	40,100
Trade, Transportation, & Utilities	13,800	13,700	13,900	25,100	24,700	23,700	11,600	11,500	11,600
Wholesale Trade									
Merchant Wholesalers, Durable Goods									
Merchant Wholesalers, Nondurable Goods									
Retail Trade	9,500	9,500	9,600	10,800	10,700	10,800	7,900	7,900	7,700
Clothing & Clothing Accessories Stores, General Merchandise	3,300	3,300	3,400						
Motor Vehicle & Parts Dealers									
Building Material & Garden Equipment & Supplies Dealers									
Food & Beverage Stores									
Grocery Stores									
Health & Personal Care Stores									
Gasoline Stations									
Clothing and Clothing Accessories Stores									
General Merchandise Stores									
Department Stores									
Transportation, Warehousing, & Utilities									
Transportation and Warehousing									
Truck Transportation									
Support Activities for Transportation				4,500	4,400	4,400			
Information									
Telecommunications									
Financial Activities									
Finance & Insurance									
Credit Intermediation & Related Activities									
Depository Credit Intermediation									
Insurance Carriers & Related Activities									
Real Estate & Rental & Leasing									
Professional & Business Services	7,200	7,300	7,100						
Professional, Scientific, & Technical Services									
Legal Services									
Accounting, Tax Preparation, Bookkeeping & Payroll Services									
Architectural, Engineering, & Related Services									
Management of Companies & Enterprises									
Admin. & Support & Waste Mgmt. & Remediation Serv.									
Administrative & Support Services				5,200	5,100	4,200			
Employment Services				3,600	3,500	2,600			
Services to Buildings & Dwellings									
Education & Health Services	13,300	13,300	12,900						
Educational Services									
Colleges, Universities, & Professional Schools									
Health Care & Social Assistance									
Ambulatory Health Care Services									
Offices of Physicians									
Home Health Care Services									
Hospitals	3,600	3,600	3,500				4,400	4,400	4,100
Nursing & Residential Care Facilities									
Nursing Care Facilities									
Social Assistance									
Leisure & Hospitality	7,000	7,200	7,100	7,800	7,700	7,500			
Arts, Entertainment, & Recreation									
Amusement, Gambling, & Recreation Industries									
Gambling Industries									
Accommodation & Food Services									
Accommodation									
Food Services & Drinking Places									
Other Services									
Repair & Maintenance									
Automotive Repair & Maintenance									
Personal & Laundry Services									
Government	14,600	14,600	15,300	13,900	13,900	14,800	14,900	15,000	15,300
Federal Government	600	600	1,000	400	400	900	2,900	3,000	3,100
State Government	4,700	4,700	4,800	3,300	3,300	3,300	4,600	4,600	4,800
Local Government	9,300	9,300	9,500	10,200	10,200	10,600	7,400	7,400	7,400

Louisiana Unemployment Rates (Not Seasonally Adjusted)

May 2011

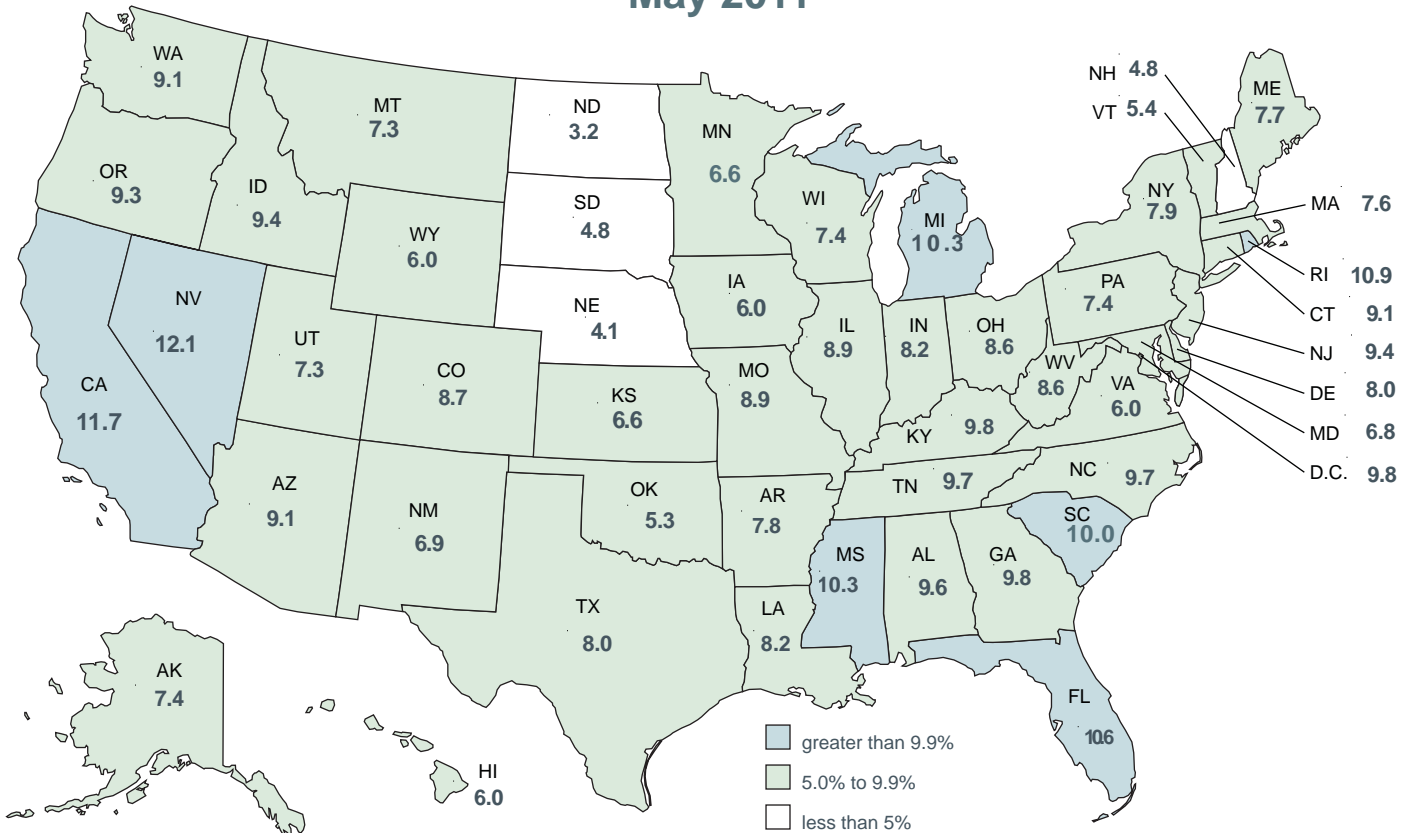


United States - Louisiana Unemployment Rates (Seasonally Adjusted)



United States Unemployment Rates (Seasonally Adjusted)

May 2011



United States Rate 9.1

CIVILIAN LABOR FORCE (Not Seasonally Adjusted)

Area	Preliminary May 2011			Revised April 2011			Revised May 2010		
	Employed	Unemployed	Rate	Employed	Unemployed	Rate	Employed	Unemployed	Rate
UNITED STATES	140,028,000	13,421,000	8.7	139,661,000	13,237,000	8.7	139,497,000	14,369,000	9.3
LOUISIANA	1,891,296	166,406	8.1	1,896,334	150,910	7.4	1,938,004	149,806	7.2
ALEXANDRIA MSA	63,469	5,306	7.7	64,140	4,826	7.0	64,433	4,716	6.8
Grant	7,943	687	8.0	8,027	644	7.4	8,064	696	7.9
Rapides	55,526	4,619	7.7	56,113	4,182	6.9	56,369	4,020	6.7
BATON ROUGE MSA	342,161	31,189	8.4	343,925	28,171	7.6	352,263	27,613	7.3
Ascension	46,839	3,967	7.8	47,081	3,589	7.1	48,222	3,813	7.3
East Baton Rouge	197,627	17,574	8.2	198,645	15,768	7.4	203,461	15,080	6.9
East Feliciana	7,269	710	8.9	7,306	643	8.1	7,483	647	8.0
Iberville	10,874	1,423	11.6	10,930	1,313	10.7	11,195	1,231	9.9
Livingston	53,501	4,662	8.0	53,777	4,228	7.3	55,081	4,302	7.2
Pointe Coupee	8,559	934	9.8	8,604	840	8.9	8,812	792	8.2
St. Helena	3,647	563	13.4	3,666	562	13.3	3,755	522	12.2
West Baton Rouge	9,605	881	8.4	9,654	838	8.0	9,888	830	7.7
West Feliciana	4,240	476	10.1	4,262	390	8.4	4,365	397	8.3
HOUMA-BAYOU CANE- THIBODAUX MSA	97,093	6,141	5.9	96,993	5,530	5.4	98,016	5,489	5.3
Lafourche	45,846	2,928	6.0	45,799	2,596	5.4	46,282	2,491	5.1
Terrebonne	51,247	3,213	5.9	51,194	2,934	5.4	51,734	2,998	5.5
LAFAYETTE MSA	125,939	8,643	6.4	126,109	7,739	5.8	129,756	7,772	5.7
Lafayette	104,138	6,895	6.2	104,279	6,145	5.6	107,294	6,059	5.3
St. Martin	21,801	1,748	7.4	21,830	1,594	6.8	22,462	1,713	7.1
LAKE CHARLES MSA	89,018	6,946	7.2	88,266	6,328	6.7	89,526	6,459	6.7
Calcasieu	86,092	6,755	7.3	85,365	6,136	6.7	86,584	6,292	6.8
Cameron	2,926	191	6.1	2,901	192	6.2	2,942	167	5.4
MONROE MSA	72,987	6,761	8.5	74,293	6,117	7.6	76,176	6,208	7.5
Ouachita	64,071	5,901	8.4	65,218	5,311	7.5	66,871	5,377	7.4
Union	8,916	860	8.8	9,075	806	8.2	9,305	831	8.2
NEW ORLEANS-METairie- KENNER MSA	497,393	43,244	8.0	499,396	38,992	7.2	506,748	38,486	7.1
Jefferson	197,064	16,204	7.6	197,858	14,581	6.9	200,771	14,632	6.8
New Orleans City/Orleans	133,758	13,678	9.3	134,296	12,308	8.4	136,273	11,915	8.0
Plaquemines	7,427	687	8.5	7,457	639	7.9	7,567	497	6.2
St. Bernard	16,884	1,523	8.3	16,952	1,386	7.6	17,202	1,231	6.7
St. Charles	22,106	1,826	7.6	22,196	1,629	6.8	22,522	1,796	7.4
St. John Baptist	18,619	2,131	10.3	18,694	1,948	9.4	18,969	2,115	10.0
St. Tammany	101,534	7,195	6.6	101,943	6,501	6.0	103,444	6,299	5.7
SHREVEPORT-BOSSIER CITY MSA	173,121	13,570	7.3	173,605	12,275	6.6	173,528	12,358	6.6
Bossier	51,348	3,480	6.3	51,491	3,169	5.8	51,468	3,013	5.5
Caddo	111,158	9,130	7.6	111,468	8,276	6.9	111,419	8,399	7.0
De Soto	10,616	959	8.3	10,645	831	7.2	10,640	946	8.2
NON-MSA PARISHES									
Acadia (Crowley) ¹	23,636	1,801	7.1	23,684	1,588	6.3	24,796	1,705	6.4
Allen	7,725	951	11.0	7,672	841	9.9	7,967	923	10.4
Assumption (Pierre Part) ¹	9,030	1,255	12.2	9,028	1,154	11.3	9,343	1,077	10.3
Avoyelles	14,504	1,550	9.7	14,567	1,384	8.7	15,441	1,315	7.8
Beauregard (DeRidder) ¹	13,402	1,198	8.2	13,391	1,113	7.7	13,572	1,037	7.1
Bienville	5,725	623	9.8	5,705	576	9.2	5,912	562	8.7
Caldwell	4,021	458	10.2	4,032	435	9.7	4,124	427	9.4
Catahoula	3,784	458	10.8	3,750	420	10.1	3,945	398	9.2
Claiborne	5,764	634	9.9	5,769	571	9.0	6,082	586	8.8
Concordia (Natchez, MS-LA) ¹	6,459	890	12.1	6,439	818	11.3	6,705	794	10.6
East Carroll	2,267	461	16.9	2,217	430	16.2	2,554	419	14.1
Evangeline	11,248	1,182	9.5	11,207	1,066	8.7	11,713	1,046	8.2
Franklin	6,701	947	12.4	6,665	883	11.7	7,143	851	10.6
Iberia (New Iberia) ¹	30,224	2,618	8.0	30,112	2,404	7.4	31,023	2,553	7.6
Jackson (Ruston) ¹	5,927	556	8.6	5,901	492	7.7	6,092	456	7.0
Jefferson Davis (Jennings) ¹	13,312	958	6.7	13,245	855	6.1	13,999	904	6.1
La Salle	6,503	426	6.1	6,503	374	5.4	6,479	393	5.7
Lincoln (Ruston) ¹	17,604	1,824	9.4	17,526	1,636	8.5	18,095	1,576	8.0
Madison (Tallulah) ¹	4,049	545	11.9	4,021	494	10.9	4,200	467	10.0
Morehouse (Bastrop) ¹	9,258	1,616	14.9	9,249	1,522	14.1	9,942	1,542	13.4
Natchitoches (Natchitoches) ¹	15,157	1,485	8.9	15,170	1,294	7.9	16,035	1,342	7.7
Red River	3,284	332	9.2	3,274	300	8.4	3,425	302	8.1
Richland	8,155	993	10.9	8,109	937	10.4	8,423	882	9.5
Sabine	8,737	699	7.4	8,694	640	6.9	8,884	617	6.5
St. James	8,100	1,202	12.9	8,128	1,109	12.0	8,453	1,061	11.2
St. Landry (Opelousas, Eunice) ¹	34,802	3,428	9.0	34,879	3,061	8.1	36,058	3,135	8.0
St. Mary (Morgan City) ¹	20,170	2,280	10.2	20,228	2,133	9.5	20,890	2,083	9.1
Tangipahoa (Hammond) ¹	47,142	5,056	9.7	47,365	4,604	8.9	49,114	4,746	8.8
Tensas	1,538	277	15.3	1,482	256	14.7	1,738	287	14.2
Vermilion (Abbeville) ¹	22,006	1,726	7.3	21,886	1,593	6.8	23,016	1,660	6.7
Vernon (Fort Polk South) ¹	19,579	1,670	7.9	19,397	1,738	8.2	19,772	1,332	6.3
Washington (Bogalusa) ¹	13,147	1,616	10.9	13,166	1,486	10.1	14,371	1,493	9.4
Webster (Mindon) ¹	17,855	1,632	8.4	17,965	1,507	7.7	18,507	1,528	7.6
West Carroll	3,372	691	17.0	3,331	680	17.0	3,751	684	15.4
Winn	5,927	569	8.8	5,852	538	8.4	5,995	517	7.9

¹In addition to the eight (8) Metropolitan Statistical Areas (MSAs) in Louisiana, there are seventeen (17) Micropolitan Statistical Areas (MCs): Jackson and Lincoln Parishes combine to constitute one MC area. Civilian Labor Force can be derived by adding employed and unemployed. For related information or data, please visit: www.bls.gov/lau/home.htm.

LOUISIANA - PRIVATE EMPLOYMENT (Not Seasonally Adjusted)

	Avg. Weekly Earnings (\$)			Avg. Weekly Hours			Avg. Hourly Earnings (\$)		
	MAY	APR	MAY	MAY	APR	MAY	MAY	APR	MAY
	2011	2011	2010	2011	2011	2010	2011	2011	2010
Total Private	754.77	738.71	710.09	36.8	36.3	37.1	20.51	20.35	19.14
Goods-Producing	1,026.50	1,013.04	989.41	42.4	42.0	43.3	24.21	24.12	22.85
Private Service-Providing	685.70	669.73	638.29	35.4	34.9	35.5	19.37	19.19	17.98
Construction	940.53	925.99	894.67	42.5	41.9	43.6	22.13	22.10	20.52
Manufacturing	1,035.31	1,025.00	1,004.36	41.1	41.0	42.2	25.19	25.00	23.80
Trade, Transportation, and Utilities	713.23	677.49	658.61	38.1	36.8	37.4	18.72	18.41	17.61
Financial Activities	742.95	703.17	716.25	39.0	36.7	37.5	19.05	19.16	19.10
Professional and Business Services	989.60	968.73	934.57	39.6	39.8	39.4	24.99	24.34	23.72
Education and Health Services	607.72	609.22	552.09	33.1	33.4	33.0	18.36	18.24	16.73
Leisure and Hospitality	329.37	325.42	331.93	26.8	26.5	27.8	12.29	12.28	11.94

METROPOLITAN STATISTICAL AREA (MSA) PRIVATE EMPLOYMENT (Not Seasonally Adjusted)

	Avg. Weekly Earnings (\$)			Avg. Weekly Hours			Avg. Hourly Earnings (\$)		
	MAY	APR	MAY	MAY	APR	MAY	MAY	APR	MAY
	2011	2011	2010	2011	2011	2010	2011	2011	2010
Alexandria	721.13	703.98	563.49	37.0	36.8	35.8	19.49	19.13	15.74
Baton Rouge	779.36	776.16	712.05	36.3	35.9	36.2	21.47	21.62	19.67
Houma	869.45	833.49	807.61	40.8	40.5	40.3	21.31	20.58	20.04
Lafayette	771.46	759.66	681.47	38.4	37.7	37.3	20.09	20.15	18.27
Lake Charles	858.13	841.49	756.76	39.6	39.9	37.8	21.67	21.09	20.02
Monroe	528.72	512.94	529.94	33.4	33.2	34.3	15.83	15.45	15.45
New Orleans	872.46	855.77	849.47	37.0	36.2	38.7	23.58	23.64	21.95
Shreveport	628.25	595.39	672.47	35.0	34.1	35.3	17.95	17.46	19.05

AVERAGE HOURS AND EARNINGS FOR PRODUCTION WORKERS IN MANUFACTURING AND SELECTED NONMANUFACTURING INDUSTRIES (Not Seasonally Adjusted)

	Avg. Weekly Earnings (\$)			Avg. Weekly Hours			Avg. Hourly Earnings (\$)		
	MAY	APR	MAY	MAY	APR	MAY	MAY	APR	MAY
	2011	2011	2010	2011	2011	2010	2011	2011	2010
Louisiana									
Mining & Logging	1,042.19	1,042.04	954.71	43.9	43.6	41.8	23.74	23.90	22.84
Manufacturing	875.28	882.40	921.29	42.0	41.8	42.3	20.84	21.11	21.78
Durable Goods	898.80	899.73	845.83	42.0	42.5	41.0	21.40	21.17	20.63
Nondurable Goods	851.68	865.16	1,006.96	42.1	41.1	43.8	20.23	21.05	22.99
New Orleans MSA									
Ship and Boat Building	874.68	874.68	829.74	38.6	38.6	38.9	22.66	22.66	21.33

The 103,500 production workers in all manufacturing earned an average of \$875.28 per week in May 2011. Average weekly hours were 42.0, and average hourly earnings were \$20.84.

LOUISIANA UNEMPLOYMENT INSURANCE by CLAIMANT'S PARISH of RESIDENCE

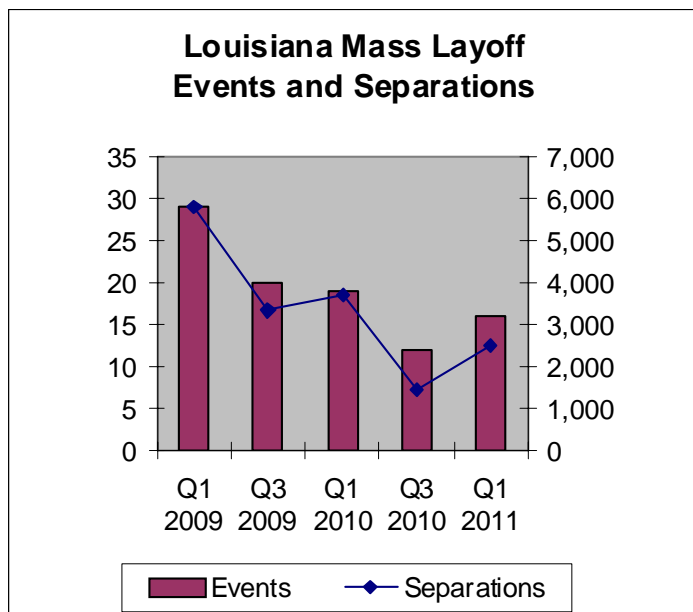
WEEK ENDING - May 14, 2011

RLMA/PARISH	INITIAL CLAIMS	WEEKS CLAIMED	RLMA/PARISH	INITIAL CLAIMS	WEEKS CLAIMED	RLMA/PARISH	INITIAL CLAIMS	WEEKS CLAIMED
RLMA 1	1,012	10,444	RLMA 4	461	4,915	RLMA 7	428	4,767
JEFFERSON	414	4,195	ACADIA	34	351	BIENVILLE	12	151
ORLEANS	328	3,300	EVANGELINE	14	231	BOSSIER	63	700
PLAQUEMINES	13	178	IBERIA	61	616	CADDO	188	2,251
ST. BERNARD	0	1	LAFAYETTE	163	1,589	CLAIBORNE	8	125
ST. CHARLES	33	397	ST. LANDRY	70	825	DESOTO	26	199
ST. JAMES	36	346	ST. MARTIN	35	337	LINCOLN	42	422
ST. JOHN	65	573	ST. MARY	55	603	NATCHITOCHEs	42	326
ST. TAMMANY	123	1,454	VERMILION	29	363	RED RIVER	3	79
						SABINE	7	127
						WEBSTER	37	387
RLMA 2	850	9,218	RLMA 5	192	2,291	RLMA 8	264	3,257
ASCENSION	104	1,012	ALLEN	18	186	CALDWELL	14	97
E. BATON ROUGE	371	4,286	BEAUREGARD	24	369	EAST CARROLL	7	115
EAST FELICIANA	17	167	CALCASIEU	140	1,540	FRANKLIN	15	253
IBERVILLE	38	393	CAMERON	0	22	JACKSON	10	152
LIVINGSTON	105	1,095	JEFF. DAVIS	10	174	MADISON	11	126
POINTE COUPEE	21	232				MOREHOUSE	23	424
ST. HELENA	7	75	RLMA 6	213	2,691	OUACHITA	131	1,475
TANGIPAOHA	139	1,297	AVOYELLES	34	372	RICHLAND	26	249
WASHINGTON	20	332	CATAHOULA	13	105	TENSAS	10	62
W. BATON ROUGE	22	238	CONCORDIA	22	169	UNION	10	187
WEST FELICIANA	6	91	GRANT	15	133	WEST CARROLL	7	117
			LASALLE	8	72			
RLMA 3	143	1,627	RAPIDES	84	1,108			
ASSUMPTION	26	350	VERNON	29	627			
LAFOURCHE	55	590	WINN	8	105			
TERREBONNE	62	687						

RLMA = REGIONAL LABOR MARKET AREA

THE ABOVE FIGURES INCLUDE REGULAR UNEMPLOYMENT INSURANCE (UI), UNEMPLOYMENT CLAIMS for FEDERAL EMPLOYEES (UCFE), and UNEMPLOYMENT CLAIMS for EX-SERVICE MEMBERS (UCX) DATA ONLY.

Mass Layoff Events and Separations First Quarter 2011



Louisiana recorded a total of 12 mass layoff events from July through September of 2010, down from 19 events during the first quarter of 2010. The first quarter 2010 mass layoff events included 3,690 separations while the third quarter's mass layoff events included 1,434 separations.

Nationally, employers initiated 1,564 mass layoff events in the first quarter of 2010 that resulted in the separation of 221,150 workers from their jobs for at least 31 days. Although Louisiana reported 29 mass layoff events in the first quarter of 2009, the second quarter of 2009 recorded an increase in the amount of mass layoff events, resulting in 9,699 separations.

Source: The Mass Layoff Statistics (MLS) program is a federal-state program that identify and track the effects of major job cutbacks, using data from each state's unemployment insurance database.

For additional information visit www.bls.gov/mls

Glossary & Technical Notes

Average Hourly Earnings/Average Weekly Earnings/ Average Weekly Hours (CES/BLS) - average total money earnings, in the survey week (i.e., the week that includes the twelfth of the month), of production workers plus nonsupervisory workers not in production, including overtime, paid vacation and sick leave.

Civilian Labor Force - that portion of the population, age sixteen or older, which is employed or unemployed and actively seeking employment during the reference week of the twelfth of the month.

Employed - the members of the labor force who worked for pay or profit, or had a job from which they were temporarily absent because of illness, vacation, labor dispute, or other reasons not reflecting a shortage of work, or who worked fifteen hours or more as unpaid workers in an enterprise operated by a member of the family.

Unemployed - the members of the labor force who did not work but were seeking work or were awaiting recall from layoffs or the beginning of a new job within thirty days.

Unemployment Rate - the number of unemployed persons expressed as a percentage of the labor force.

Continued Claim - each week claimed subsequent to the filing of the initial claim for a week of unemployment compensation.

Current Employment Statistics (CES) - estimates of nonfarm employment and production workers hours and earnings by industry. They are produced as part of a nationwide program, in cooperation with the Bureau of Labor Statistics (BLS), for the state and each metropolitan statistical area (MSA) from a sample of employing establishments.

Current Population Survey (CPS) - a monthly household survey of the U.S. population conducted for the Bureau of Labor Statistics (BLS) by the Bureau of Census, of 56,000 selected households. Respondents are interviewed to obtain information on the employment status of each household member age 16 and over, during the reference week of the twelfth.

Durable Goods - items with a normal life expectancy of three years or more. Automobiles, furniture, household appliances, and mobile homes are examples.

Extended Layoff Event - Fifty or more initial claims for unemployment insurance benefits from an establishment during a 5-week period, with at least 50 workers separated for more than 30 days.

Initial Claims - a new claim, filed to open a claim for unemployment compensation.

Metropolitan Statistical Area (MSA) - a geographical area comprised of a parish generally containing a central city (or twin cities) of 50,000 inhabitants or more and contiguous parishes that are socially and economically integrated with the central city.

Micropolitan Statistical Area (MC) - a geographical area comprised of a parish containing a central city of at least 10,000 but less than 50,000 inhabitants and contiguous parishes that are socially and economically integrated with the central city.

NAICS (North American Industry Classification System) - an industry classification system that groups establishments into industries based on the activities in which they are primarily engaged.

Nonfarm Employment - employment by place of work that does not include the self employed, unpaid family workers, domestics, or agriculture workers. All estimates of nonfarm employment in this publication are in cooperation with the U.S. Department of Labor Bureau of Labor Statistics and include all full-time and part-time workers who were employed during the pay period including the twelfth of the month.

Nondurable Goods - items that generally last for only a short period of time (less than three years). Food, beverages, apparel, and gasoline are common examples.

Seasonally Adjusted - monthly data that is adjusted to minimize the changes in any time series which result from normal annual occurrences such as Christmas, summer vacations, and weather patterns.

Separation - The release of persons from an employer as part of a mass layoff event. Such releases involve both persons subject to recall and those who are terminated by the establishment.

Subsector - refers to the three-digit NAICS code, which will fall under the particular sector. Example: If Manufacturing (31-33) is the industry sector, then Food manufacturing (311), Paper manufacturing (322), Chemical manufacturing (325), Transportation equipment manufacturing (336), are some of the subsectors of manufacturing.

Supersector - refers to these five categories: Total Nonfarm, Total Private, Goods-Producing, Service-Providing, and Private Service-Providing.

Summary Industry Sector - a combination of industry sectors. A summary sector may or may not be published. The summary industry sectors are Mining & Logging; Construction; Manufacturing; Trade, Transportation, & Utilities; Information; Financial Activities; Professional & Business Services; Education & Health Services; Leisure & Hospitality; Other Services; and Government.

Industry Sector - 20 industry sectors based on two-digit NAICS code. They are Agriculture, Forestry, Fishing and Hunting (11), Mining (21), Utilities (22), Construction (23), Manufacturing (31-33), Wholesale Trade (42), Retail Trade (44-45), Transportation and Warehousing (48-49), Information (51), Finance and Insurance (52), Real Estate and Rental and Leasing (53), Professional and Technical Services (54), Management of Companies and Enterprises (55), Administrative and Waste Services (56), Educational Services (61), Health Care and Social Assistance (62), Arts, Entertainment, and Recreation (71), Accommodation and Food Services (72), Other Services (81), and Public Administration (92).

Constraints of the monthly civilian labor force and nonfarm employment estimates:

The civilian labor force estimates are derived by a monthly survey of approximately 750 households throughout Louisiana following the Bureau of Labor Statistics (BLS) methodology. The US Census Bureau conducts the survey by calling randomly selected households and providing BLS with survey results. Households are asked for the number of residents who are sixteen and over and whether they were working or actively looking for work during the week of the twelfth of the month. Responses to these questions become part of the formula to determine the number of people employed and the number of individuals unemployed for the state, MSAs, and each parish every month.

The nonfarm employment estimates are derived from responses received from the monthly BLS survey of 2,757 businesses across the state surveyed directly by this agency, and an additional 2,500 businesses that respond directly to BLS with their employment data. Responses capture employment activity during the twelfth of each month. This survey relies on responses from these businesses to produce industry employment levels for the state and all metropolitan statistical areas.

Both data sets are comparable with estimates for the U.S., all 50 states, and 270 metropolitan areas across the U.S.

LABOR MARKET INFORMATION WEB LINKS

Civilian Labor Force - LAUS (Local Area Unemployment Statistics) –

Employment, Unemployment and Unemployment Insurance Rate

LA <http://www.voshost.com/altentry.asp?action=lmiguest>

Left menu: Historical Data Analysis – Employment and Wage Data – Labor Force Data – Labor Force Employment and Unemployment (LAUS)

States <http://data.bls.gov/cgi-bin/dsrv?la>

US <http://data.bls.gov/pdq/querytool.jsp?survey=ln>

Consumer Price Index (US) <http://data.bls.gov/cgi-bin/surveymost?cu>

Download Louisiana Workforce Commission’s Labor Market Information Products

LA http://www.laworks.net/Downloads/Downloads_LMI.asp

Employment and Wage Data – Quarterly Census of Employment and Wages (QCEW)

LA <http://www.voshost.com/altentry.asp?action=lmiguest>

Left menu: Historical Data Analysis – Employment and Wage Data – Industry Data – Quarterly Census of Employment and Wages (QCEW)

States & US <http://data.bls.gov/cgi-bin/dsrv?en>

NAICS (North American Industry Classification System) Codes Look-Up Table

<http://www.census.gov/eos/www/naics>

Nonfarm Employment, Hours and Earnings - CES (Current Employment Statistics)

LA <http://www.voshost.com/altentry.asp?action=lmiguest>

Left menu: Historical Data Analysis – Employment and Wage Data – Industry Data – Current Employment Statistics (CES) – select Show Earnings Data under table

States <http://data.bls.gov/cgi-bin/dsrv?sm>

US <http://data.bls.gov/cgi-bin/dsrv?ce>

Unemployment Insurance Claimants Data (by Occupation) - Unemployment Insurance (UI)

LA <http://www.voshost.com/altentry.asp?action=lmiguest>

Left menu: Historical Data Analysis – Employment and Wage Data – Labor Force Data – Unemployment Insurance Claimants

Unemployment Insurance Claims Data (by Region, Parish, Industry) - UI

LA http://www.laworks.net/LaborMarketInfo/LMI_UIClaimsReportMenu.asp

States & US <http://ows.doleta.gov/unemploy/claims.asp>

Unemployment Rates for all States - LAUS

States <http://www.bls.gov/web/laumstrk.htm>



Office of Occupational Information Services
Research & Statistics Division
Post Office Box 94094
Baton Rouge, LA 70804-9094

Data for: 5/2011



Workforce At A Glance is published monthly by the Louisiana Workforce Commission (LWC). The material in this publication is not copyrighted and may be reproduced; however, the LWC would appreciate credit for the material used and a copy of the reprint.

LMI Staff:

Patty Granier, Manager
Ramona Robichaux, Supervisor
Ronald Smith, Layout and Design
Benjamin Caldwell, Karen Clark, Jonathan Helis,
and Tequila Perkins

Contributors:

Florence Gibson-Williams, Eula Sanders,
Natalie Foster-Lawrence, Mark Jones, Tara Robinson,
Helen Hilliard, and Karen Clark

Contact Us:

Phone (225) 342-3141; Fax (225) 219-7759
Toll Free (888) 302-7662;
Email OOIS@ldol.state.la.us

Bobby Jindal, Governor
State of Louisiana

Curt Eysink, Executive Director
Louisiana Workforce Commission

Raj Jindal,
Information Technology Director

Visit our Web site:
www.laworks.net