

# Louisiana Workforce

## at a glance

www.laworks.net

Updated May 25, 2011 for Shreveport MSA on Page 9

Correction: April 26, 2011

Data For: March 2011

### In This Issue

2 Economic Comparison

3 NSA State & Area Employment

4 – 7 Data Trends (Graphs)

8 – 10 Nonfarm Employment

11 – 12 Unemployment Rates & Civilian Labor Force

13 Average Hours & Earnings

14 UI Claimants & BLS changes to CES Q&A

15 – 16 Glossary, Data Constraints, Downloads & Web Links

## Statewide Overview

**NOTE: This replaces an earlier version that contained incorrect seasonally adjusted nonfarm data.**

Seasonally adjusted nonfarm employment for Louisiana was estimated at 1,886,400 in March 2011. This represents a loss of 5,900 jobs from the previous month, but a 4,400 job increase from March 2010. The construction sector posted a loss of 3,500 over the month, the largest monthly change in March. The government sector recorded the largest over-the-year change, losing 10,800 jobs from last March.

Over the month, nine of the eleven industry sectors had decreases in employment, while two showed an increase. The education and health sector gained 2,000 jobs when compared to last month, while leisure and hospitality added 100 jobs. After construction, the trade, transportation, and utilities sector recorded the second largest loss, dropping 1,600 jobs from February. Manufacturing lost 700 jobs over the month, while both the mining and logging and financial activities sectors fell by 500 jobs. Both the professional and business services sector and other services declined by 400 jobs from February. Government decreased by 300, while information showed a small loss of 100 jobs.

Over the year, six sectors showed a gain, while five declined from last March. The largest over-the-year gain occurred in the education and health services sector, which added 8,000 jobs. Leisure and hospitality added 5,600 jobs over the year, while information rose by 3,700. Trade, transportation, and utilities saw an over-the-year increase of 1,200 workers. Mining and logging showed 600 more jobs than last March, while professional and business services added 400 more. After government, the largest over-the-year decline was seen in construction, which fell by 3,200. The manufacturing sector lost 700 jobs compared to last year. Financial activities declined by 300, while other services lost 100 jobs over the year.

The March 2011 preliminary seasonally adjusted unemployment rate for Louisiana was 8.1 percent, an increase from the February revised rate of 7.9 percent. The national unemployment rate for March was 8.8 percent, a decrease from the February rate of 8.9 percent. Total unemployment in the state for March was 168,768. The state civilian labor force decreased to 2,076,576 with a decrease in total employment to 1,907,808.

## Economic Indicators

### Seasonally Adjusted

Civilian Labor Force	PRELIMINARY MARCH 2011	
	United States	Louisiana
Labor Force	153,406,000	2,076,576
Employed	139,864,000	1,907,808
Unemployed	13,542,000	168,768
Unemployment Rate	8.8	8.1

### Nonfarm Wage and

Salary Employment	MAR 2011	
	United States	Louisiana
Total Nonfarm	130,738,000	1,886,400
Mining and Logging	758,000	51,800
Construction	5,514,000	120,100
Manufacturing	11,667,000	137,400
Trade, Transportation, and Utilities	24,797,000	364,700
Information	2,681,000	28,000
Financial Activities	7,610,000	92,100
Professional and Business Services	17,075,000	190,400
Education and Health Services	19,875,000	277,700
Leisure and Hospitality	13,156,000	199,200
Other Services	5,439,000	65,400
Government	22,166,000	359,600

### All Employees Average Hours & Earnings

(Not Seasonally Adjusted)

Construction	MAR 2011	
	United States	Louisiana
Average Weekly Earnings	\$ 951.83	\$ 877.59
Average Weekly Hours	37.4	39.8
Average Hourly Wages	\$ 25.45	\$ 22.05
Manufacturing	MAR 2011	
	United States	Louisiana
Average Weekly Earnings	\$ 951.82	\$ 1,002.73
Average Weekly Hours	40.4	40.4
Average Hourly Wages	\$ 23.56	\$ 24.82

### Louisiana Unemployment Insurance Activities

Claims	MAR 2011
Initial New & Renewals	14,711
Continued Weekly Intrastate Only	163,026
<b>Insured Unemployment Rate</b>	2.7
Benefits	
Number of First Payment	9,282
Benefits Paid (000's)	\$ 31,096
Weeks Compensated	159,629
Average Wkly. Benefit Amount	\$ 196.66
Average Duration of Claim (weeks)	17.2
<b>Exhaustions</b>	3,952

### United States Consumer Price Index

All Urban Consumers	MAR 2011
	223.5



The civilian labor force and nonfarm **estimates** are prepared according to Bureau of Labor Statistics (BLS) methodology and are comparable with the U.S. and other states' data. For more information, go to page 15.

## Economic Comparison

Seasonally Adjusted	PRELIMINARY MARCH 2011		REVISED FEBRUARY 2011		REVISED MARCH 2010	
<b>Civilian Labor Force</b>	<b>United States</b>	<b>Louisiana</b>	<b>United States</b>	<b>Louisiana</b>	<b>United States</b>	<b>Louisiana</b>
Labor Force	153,406,000	2,076,576	153,246,000	2,082,877	153,895,000	2,075,803
Employed	139,864,000	1,907,808	139,573,000	1,918,027	138,952,000	1,926,843
Unemployed	13,542,000	168,768	13,673,000	164,850	14,943,000	148,960
Unemployment Rate	8.8	8.1	8.9	7.9	9.7	7.2
<b>Nonfarm Wage and Salary Employment</b>	<b>MAR 2011 United States</b>	<b>MAR 2011 Louisiana</b>	<b>FEB 2011 United States</b>	<b>FEB 2011 Louisiana</b>	<b>MAR 2010 United States</b>	<b>MAR 2010 Louisiana</b>
Total Nonfarm	130,738,000	1,886,400	130,522,000	1,892,300	129,438,000	1,882,000
Mining and Logging	758,000	51,800	743,000	52,300	680,000	51,200
Construction	5,514,000	120,100	5,515,000	123,600	5,550,000	123,300
Manufacturing	11,667,000	137,400	11,650,000	138,100	11,471,000	138,100
Trade, Transportation, and Utilities	24,797,000	364,700	24,765,000	366,300	24,559,000	363,500
Information	2,681,000	28,000	2,685,000	28,100	2,718,000	24,300
Financial Activities	7,610,000	92,100	7,604,000	92,600	7,643,000	92,400
Professional and Business Services	17,075,000	190,400	16,997,000	190,800	16,546,000	190,000
Education and Health Services	19,875,000	277,700	19,830,000	275,700	19,455,000	269,700
Leisure and Hospitality	13,156,000	199,200	13,119,000	199,100	12,963,000	193,600
Other Services	5,439,000	65,400	5,434,000	65,800	5,331,000	65,500
Government	22,166,000	359,600	22,180,000	359,900	22,522,000	370,400
<b>All Employees Average Hours &amp; Earnings</b>						
<b>Construction</b>	<b>United States ( Not Seasonally Adjusted)</b>			<b>Louisiana ( Not Seasonally Adjusted)</b>		
	<b>MAR 2011</b>	<b>FEB 2011</b>	<b>MAR 2010</b>	<b>MAR 2011</b>	<b>FEB 2011</b>	<b>MAR 2010</b>
Average Weekly Earnings	\$ 951.83	\$ 940.21	\$ 930.99	\$ 877.59	\$ 894.74	\$ 915.16
Average Weekly Hours	37.4	36.9	36.9	39.8	40.8	43.6
Average Hourly Wages	\$ 25.45	\$ 25.48	\$ 25.23	\$ 22.05	\$ 21.93	\$ 20.99
<b>Manufacturing</b>						
Average Weekly Earnings	\$ 951.82	\$ 947.16	\$ 926.48	\$ 1,002.73	\$ 992.26	\$ 984.49
Average Weekly Hours	40.4	40.1	39.9	40.4	40.8	41.4
Average Hourly Wages	\$ 23.56	\$ 23.62	\$ 23.22	\$ 24.82	\$ 24.32	\$ 23.78
<b>Louisiana Unemployment Insurance Activities</b>						
<b>Claims</b>		<b>MAR 2011</b>	<b>FEB 2011</b>	<b>MAR 2010</b>	<b>% Change From</b>	
Initial New & Renewals		14,711	11,889	17,635	<b>FEB 2011</b>	<b>MAR 2010</b>
Continued Weekly Intrastate Only		163,026	167,447	261,230	23.7	-16.6
<b>Insured Unemployment Rate*</b>		2.7	2.8	3.4	-2.6	-37.6
<b>Benefits</b>					-1.8	-20.6
Number of First Payment		9,282	7,931	9,734	17.0	-4.6
Benefits Paid (000's)		\$ 31,096	\$ 29,547	\$ 51,844	5.2	-40.0
Weeks Compensated		159,629	152,130	236,456	4.9	-32.5
Average Wkly. Benefit Amount		\$ 196.66	\$ 195.88	\$ 221.59	0.4	-11.3
Average Duration of Claim (w eeks)		17.2	19.2	24.3	-10.4	-29.2
<b>Exhaustions</b>		3,952	4,092	7,630	-3.4	-48.2
<b>* Insured unemployment rate is for the week including the 12th of the month.</b>						
<b>United States Consumer Price Index</b>						
	<b>MAR 2011</b>	<b>% Change From:</b>		<b>FEB 2011</b>	<b>% Change From:</b>	
	<b>Index</b>	<b>Prior Month</b>	<b>Prior Year</b>	<b>Index</b>	<b>Prior Month</b>	<b>Prior Year</b>
<b>All Urban Consumers</b>	223.5	1.0	2.7	221.3	0.5	2.1

# Not Seasonally Adjusted State and Area Employment

Not seasonally adjusted nonfarm employment for Louisiana was estimated at 1,889,600 for March 2011. Over the month, employment gained 2,700 jobs from February, while over-the-year employment gained 8,200 jobs. Goods-producing employment fell by 3,000 jobs over the month, while the service-providing employment added 5,700 jobs when compared to February. Over the year, goods-producing industries lost 2,500 jobs while the service-providing sector gained 10,700.

Total nonfarm employment in March for the Alexandria MSA was 64,100, an increase of 1,000 jobs from February, and also a gain of 1,000 from a year ago. The goods-producing sector showed no change over the month, but a loss of 100 jobs over the year. Service-providing employment gained 1,000 jobs from February and 1,100 jobs from March 2010.

Total nonfarm employment for the Baton Rouge MSA was estimated at 362,200 for March 2011. Over the month, the MSA showed a decrease of 800 jobs, while over the year, nonfarm employment decreased by 2,500. Goods-producing employment showed a loss of 800 from last month and a loss of 1,300 from last year. The service-providing sector had no change over the month, while losing 1,200 jobs over the year.

The Houma MSA nonfarm employment was estimated at 94,100 for March 2011. This shows no change over the month and an over-the-year gain of 2,800. Neither goods-producing nor service-providing had a change from February. Goods-producing gained 200 jobs from last year, while service-providing added 2,600 compared to March 2010.

Total nonfarm employment for the Lafayette MSA was estimated at 146,100 for March 2011. This represents a loss from February of 1,500 jobs but an increase of 500 jobs from last year. Over the month, goods-producing employment fell by 700, while the service-providing sector decreased by 800 jobs. Over the year, goods-producing employment decreased by 400 jobs, while the service-providing sector increased by 900 jobs.

Total nonfarm employment for the Lake Charles MSA was 89,900 for March 2011. This represents a gain of 500 jobs from February and an increase of 300 jobs over the year. Over the month, the goods-producing sector lost 100 jobs, while service-providing employment gained 600. Over the year, goods-producing lost 900 jobs, while service-providing added 1,200.

Total nonfarm employment for the Monroe MSA was estimated at 76,200 for March 2011. This represents a gain of 600 jobs over the month, but a loss of 600 jobs over the year. The goods-producing sector showed no change both over the month and over the year. The service-providing sector added 600 jobs from February, but lost 600 jobs over the year.

Total nonfarm employment for the New Orleans MSA was 522,100 for March 2011. Over the month the MSA added 800 jobs, while over the year saw an increase of 3,100 positions. Goods-producing employment showed no change from last month, but declined by 1,900 positions from last year. The service-providing sector rose by 800 from February and added 5,000 jobs from March 2010.

Total nonfarm employment for the Shreveport MSA was 177,400 for March 2011, an increase of 1,700 jobs from last month and a gain of 2,600 from March 2010. Goods-producing employment showed an increase of 500 from February, and a gain of 1,900 from March 2010. Service-providing employment added 1,200 jobs over the month and 700 jobs compared to last year.

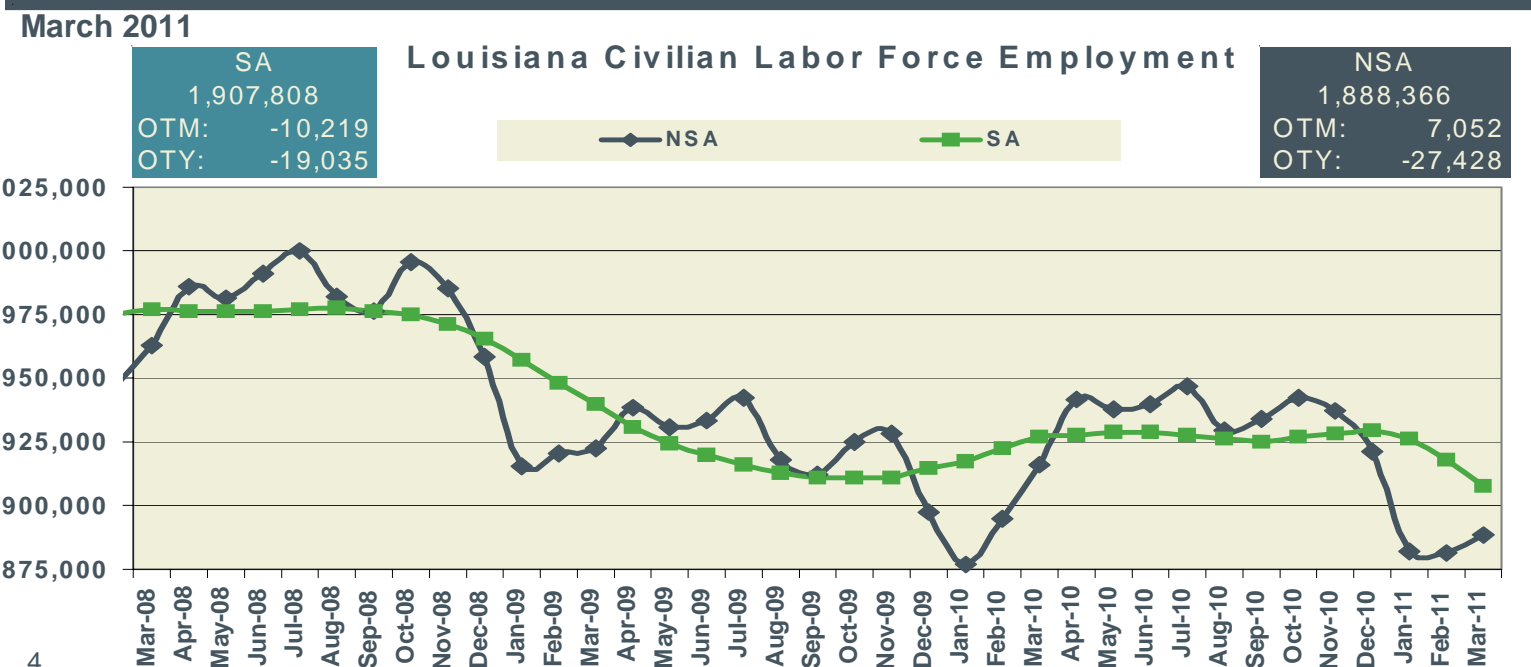
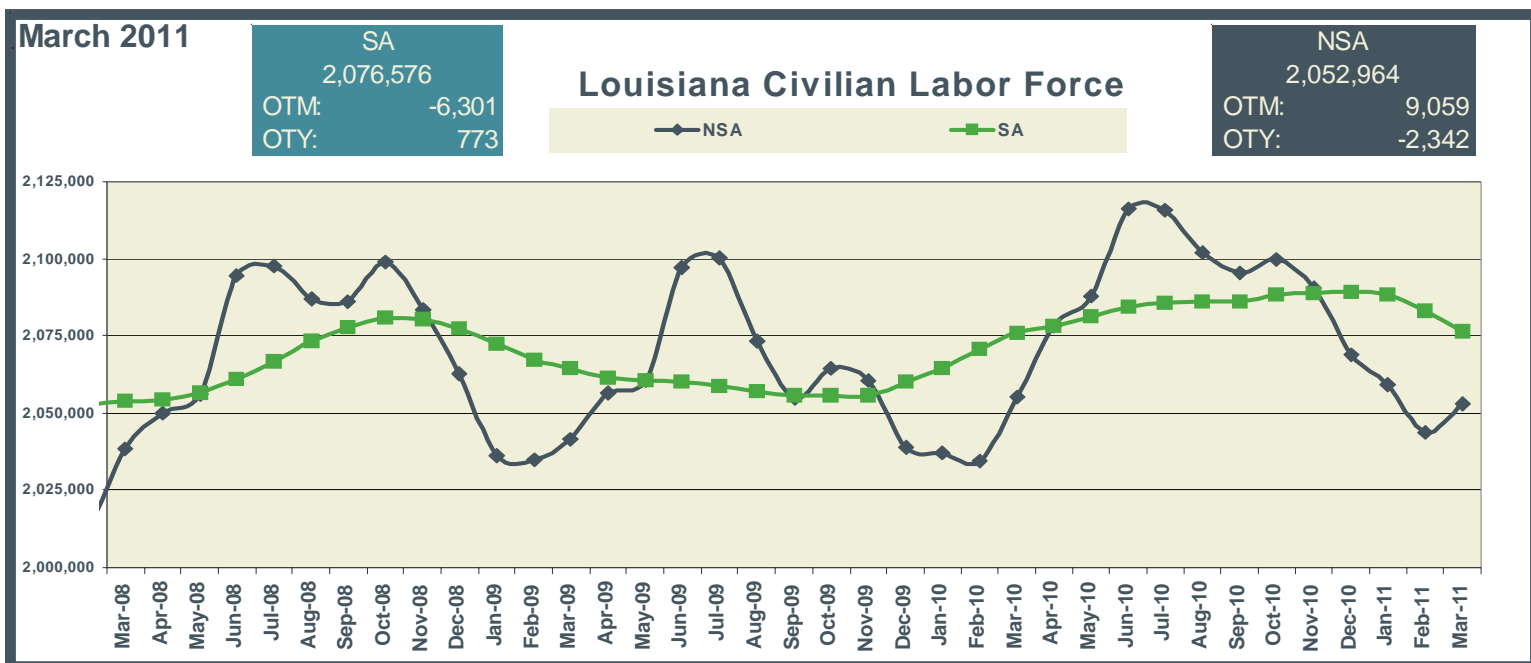
# Keys to Graphs

The following graphs have been designed to reflect the over-the-year trends in the statistical data. Below are the most frequently used abbreviations.

- OTM over-the-month change in employment
- OTY over-the-year change in employment
- SA seasonally adjusted estimates
- NSA not seasonally adjusted estimates

Graphs for statewide reflect seasonally adjusted (SA) estimates compared to not seasonally adjusted (NSA) data.

Metropolitan Statistical Areas (MSAs) graphs denote nonfarm employment levels compared to a three year red trend line of the estimated employment. The navy lines in the graphs are the over-the-month changes for each year.

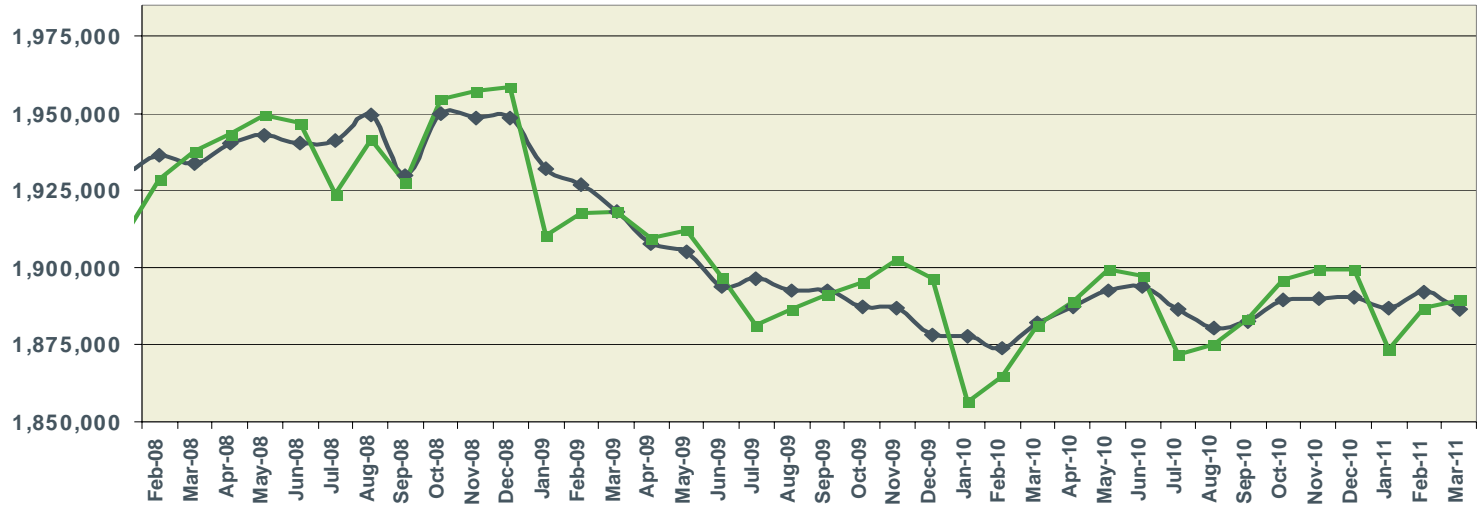


March 2011

SA  
1,886,400  
OTM: -5,900  
OTY: 4,400

### Louisiana Nonfarm Employment

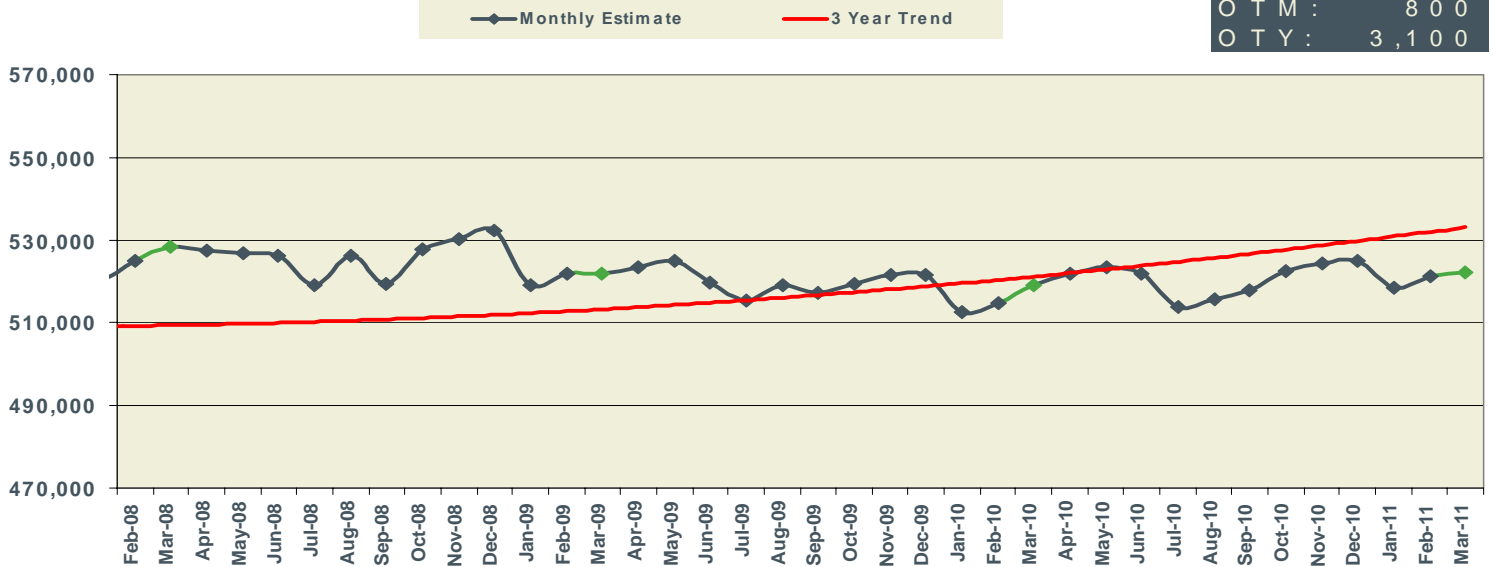
NSA  
1,889,600  
OTM: 2,700  
OTY: 8,200



March 2011

### New Orleans MSA Nonfarm Employment

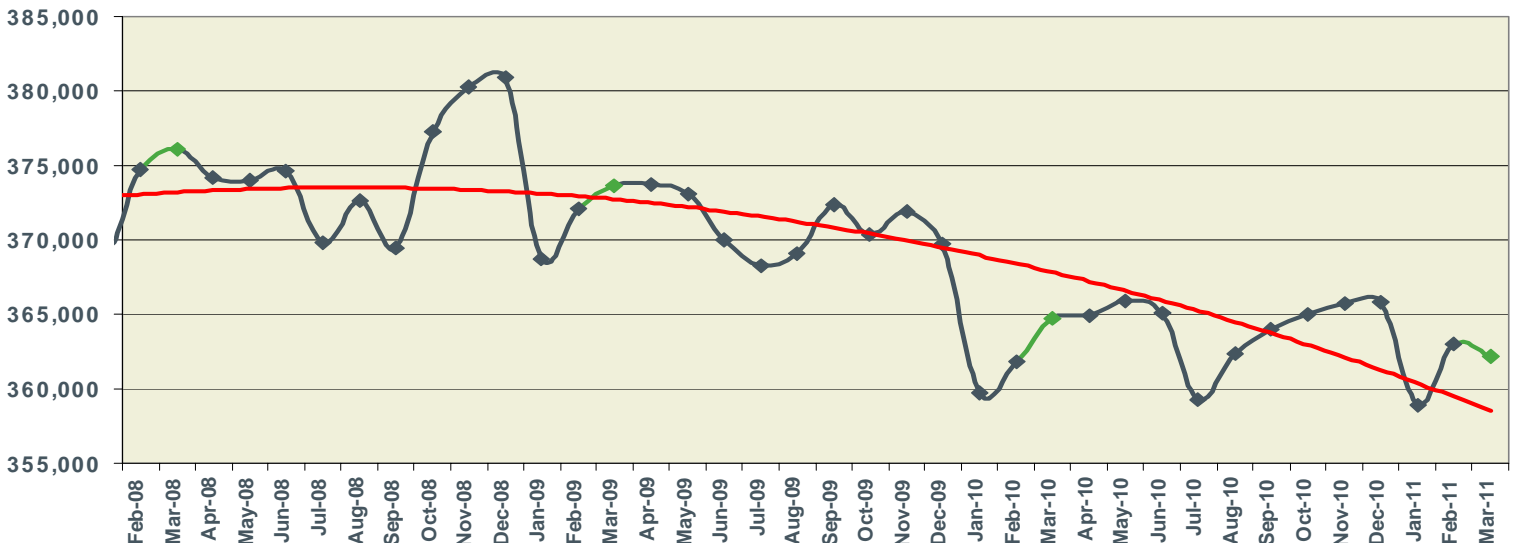
NSA  
522,100  
OTM: 800  
OTY: 3,100



March 2011

### Baton Rouge MSA Nonfarm Employment

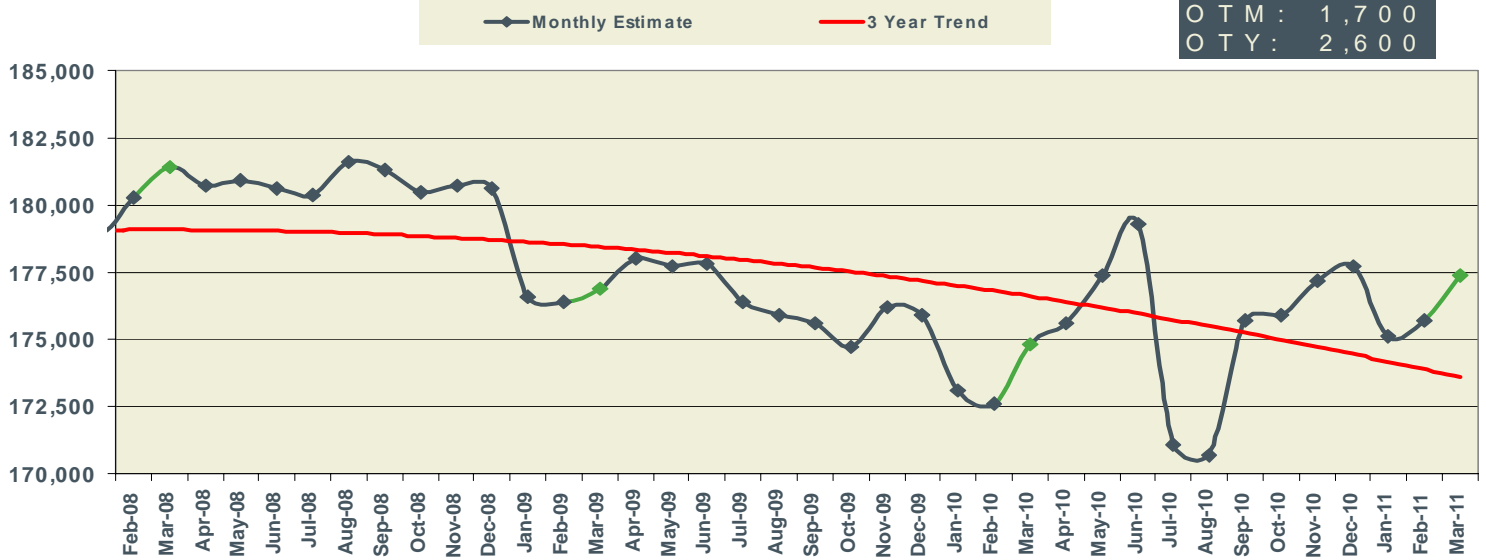
NSA  
362,200  
OTM: -800  
OTY: -2,500



March 2011

### Shreveport MSA Nonfarm Employment

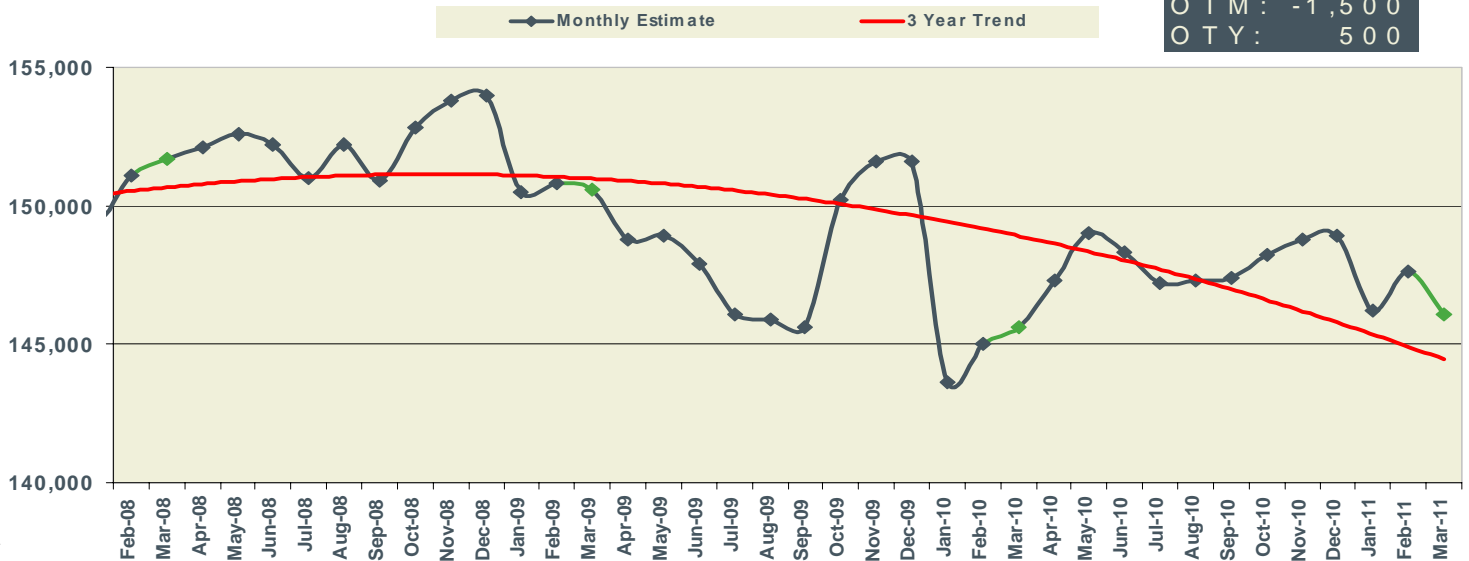
NSA	177,400
OTM	1,700
OTY	2,600



March 2011

### Lafayette MSA Nonfarm Employment

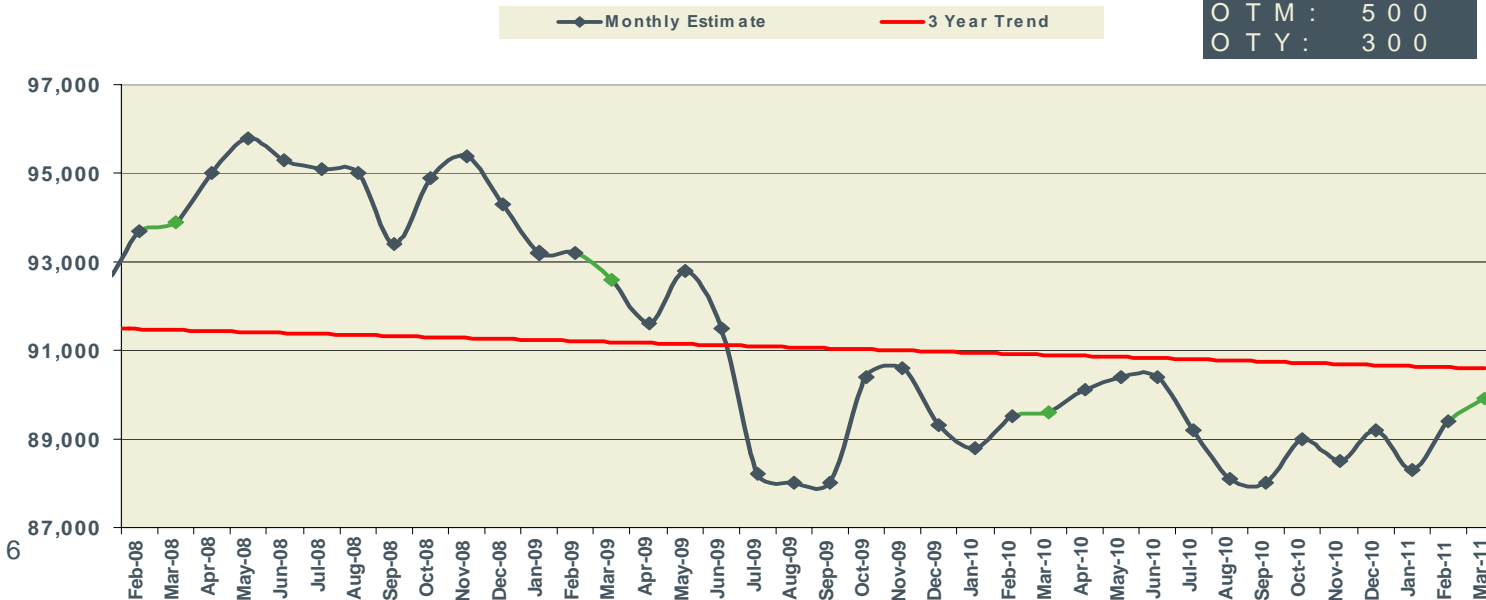
NSA	146,100
OTM	-1,500
OTY	500



March 2011

### Lake Charles MSA Nonfarm Employment

NSA	89,900
OTM	500
OTY	300

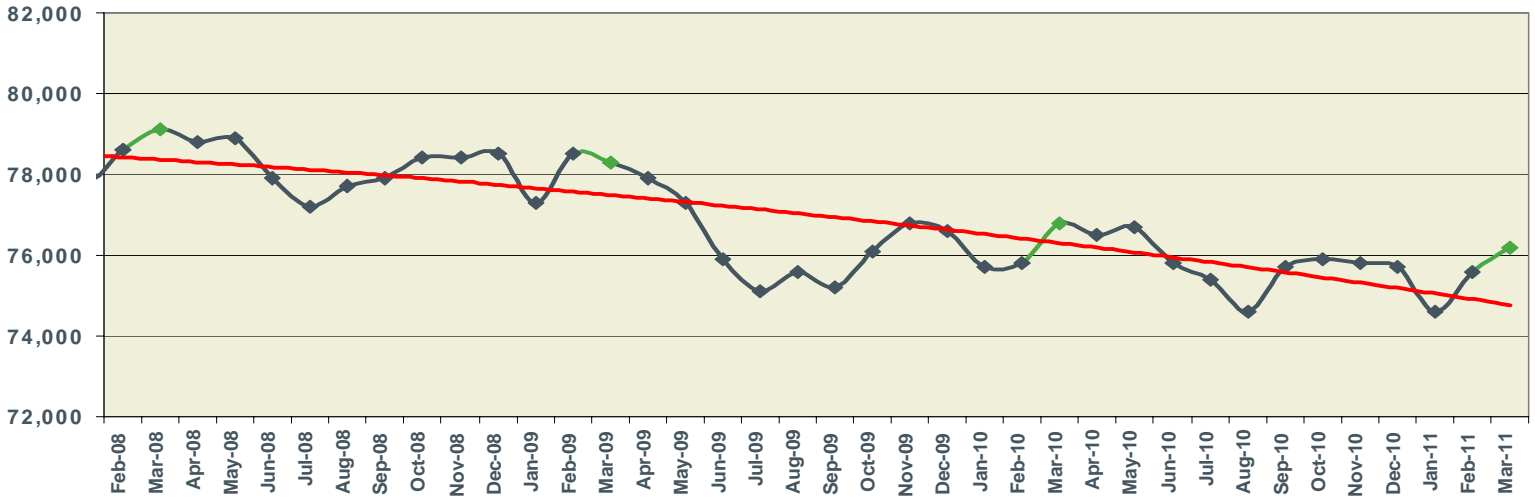


March 2011

### Monroe MSA Nonfarm Employment

NSA  
76,200  
OTM: 600  
OTY: -600

Monthly Estimate 3 Year Trend

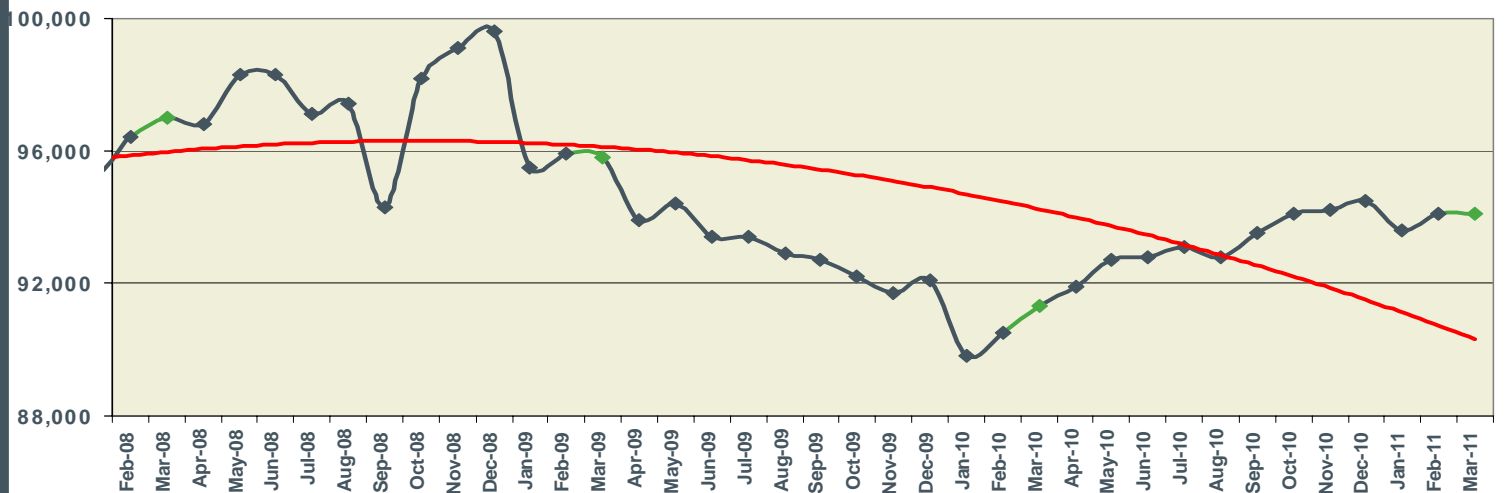


March 2011

### Houma MSA Nonfarm Employment

NSA  
94,100  
OTM: 0  
OTY: 2,800

Monthly Estimate 3 Year Trend

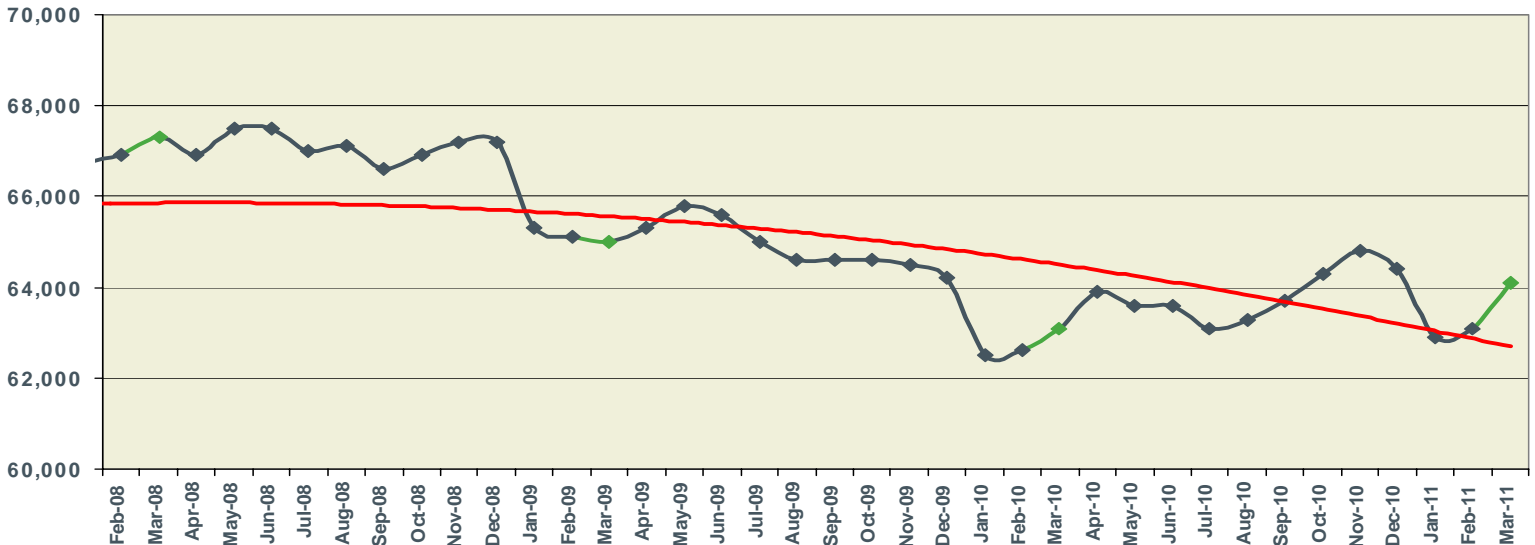


March 2011

### Alexandria MSA Nonfarm Employment

NSA  
64,100  
OTM: 1,000  
OTY: 1,000

Monthly Estimate 3 Year Trend



	LOUISIANA			NEW ORLEANS-METAIRIE-KENNER MSA			BATON ROUGE MSA		
	PREL	REV	REV	PREL	REV	REV	PREL	REV	REV
	MAR	FEB	MAR	MAR	FEB	MAR	MAR	FEB	MAR
	2011	2011	2010	2011	2011	2010	2011	2011	2010
<i>Not Seasonally Adjusted</i>									
Total Nonfarm	1,889,600	1,886,900	1,881,400	522,100	521,300	519,000	362,200	363,000	364,700
Total Private	1,527,900	1,525,200	1,507,800	441,900	440,700	435,600	284,500	285,100	286,600
Goods-Producing	307,900	310,900	310,400	68,600	68,600	70,500	63,700	64,500	65,000
Mining & Logging	51,600	51,700	51,100	7,500	7,500	7,600	1,900	1,900	1,900
Oil & Gas Extraction	8,600	8,600	8,400	2,800	2,800	2,900			
Crude Petroleum & Natural Gas Extraction	7,900	7,900	7,900						
Support Activities for Mining	39,300	39,300	38,800						
Drilling Oil & Gas Wells	9,000	9,000	8,800						
Construction	119,800	122,100	122,400	30,000	30,200	30,600	37,200	37,900	38,400
Construction of Buildings	20,800	20,600	23,100				7,100	7,000	7,300
Residential Building Construction	5,700	5,800	6,100						
Nonresidential Building Construction	15,100	14,800	17,000				6,400	6,200	6,400
Heavy & Civil Engineering Construction	39,300	40,200	38,900	8,800	8,900	8,500	13,100	13,400	13,500
Utility System Construction	18,800	18,900	18,600						
Specialty Trade Contractors	59,700	61,300	60,400	15,900	16,000	16,400	17,000	17,500	17,600
Manufacturing	136,500	137,100	136,900	31,100	30,900	32,300	24,600	24,700	24,700
Durable Goods	69,200	68,900	70,500	15,200	15,000	16,500			
Transportation Equipment Manufacturing	15,900	16,000	17,800	6,900	6,900	8,500			
Ship & Boat Building	11,000	11,100	11,800	5,600	5,600	6,000			
Nondurable Goods	67,300	68,200	66,400	15,900	15,900	15,800	16,700	16,700	16,500
Food Manufacturing	15,200	15,000	15,200						
Paper Manufacturing	7,200	7,200	7,000						
Petroleum & Coal Products Mfg. & Chemical Mfg.									
Petroleum & Coal Products Manufacturing	11,600	11,600	11,400						
Chemical Manufacturing	22,900	22,800	22,200	4,500	4,400	4,300	9,500	9,500	9,300
Basic Chemical Manufacturing	12,300	12,300	12,100				5,600	5,600	5,500
Service-Providing	1,581,700	1,576,000	1,571,000	453,500	452,700	448,500	298,500	298,500	299,700
Private Service-Providing	1,220,000	1,214,300	1,197,400	373,300	372,100	365,100	220,800	220,600	221,600
Trade, Transportation, & Utilities	365,500	363,200	361,700	103,400	103,000	102,200	63,800	63,800	64,500
Wholesale Trade	69,300	69,800	69,900	21,700	22,000	22,100	12,100	12,100	12,400
Merchant Wholesalers, Durable Goods	36,700	36,900	36,200	10,400	10,500	10,700			
Merchant Wholesalers, Nondurable Goods	23,600	23,600	24,800	7,700	7,700	7,600			
Retail Trade	217,300	215,400	216,200	57,300	56,800	56,600	40,100	40,200	40,400
Clothing & Clothing Accessories Stores, General Merchandise									
Motor Vehicle & Parts Dealers	25,500	25,300	25,500						
Building Material & Garden Equipment & Supplies Dealers	19,900	19,200	19,700						
Food & Beverage Stores	35,300	35,200	36,200						
Grocery Stores	30,600	30,500	31,500	8,200	8,000	8,500	5,600	5,600	5,800
Health & Personal Care Stores	15,300	15,400	15,400						
Gasoline Stations	18,400	18,200	18,000						
Clothing and Clothing Accessories Stores	17,700	17,300	18,000						
General Merchandise Stores	52,100	51,600	51,100	12,400	12,300	12,100	9,200	9,100	9,100
Department Stores	16,400	16,600	16,100				2,400	2,400	2,500
Transportation, Warehousing, & Utilities	78,900	78,000	75,600	24,400	24,200	23,500	11,600	11,500	11,700
Transportation and Warehousing	70,300	69,100	66,100						
Truck Transportation	15,900	15,900	15,900						
Support Activities for Transportation	19,400	19,300	18,300						
Information	28,000	28,300	24,500	9,000	9,100	7,200	5,200	5,200	4,900
Telecommunications	10,200	10,400	10,900						
Financial Activities	92,100	92,300	92,200	25,600	25,500	25,800	16,700	16,700	17,400
Finance & Insurance	62,100	62,100	62,300	18,100	18,100	18,400	12,000	11,900	12,600
Credit Intermediation & Related Activities	31,700	31,600	32,400	7,400	7,400	7,600			
Depository Credit Intermediation	22,700	22,700	23,200	5,700	5,700	5,900	4,300	4,300	4,500
Insurance Carriers & Related Activities	26,500	26,400	25,800						
Real Estate & Rental & Leasing	30,000	30,200	29,900						
Professional & Business Services	190,500	191,700	189,500	65,500	66,400	67,300	41,200	41,600	41,500
Professional, Scientific, & Technical Services	80,900	80,700	81,100	28,400	28,600	29,300	18,800	19,100	18,200
Legal Services	18,900	18,800	19,000	8,200	8,200	8,300			
Accounting, Tax Preparation, Bookkeeping & Payroll Services	11,700	12,000	11,900						
Architectural, Engineering, & Related Services	23,600	23,400	22,700						
Management of Companies & Enterprises	23,700	23,600	23,700	8,000	8,000	8,200			
Admin. & Support & Waste Mgmt. & Remediation Serv.	85,900	87,400	84,700	29,100	29,800	29,800	17,700	17,600	18,400
Administrative & Support Services	77,100	78,500	77,100	26,700	27,400	27,800			
Employment Services	28,100	27,700	27,700	9,900	10,000	10,600			
Services to Buildings & Dwellings	18,900	18,600	18,000						
Education & Health Services	278,400	275,800	270,400	77,200	76,700	75,100	49,000	48,800	48,400
Educational Services	38,100	37,900	37,800	20,300	20,200	20,600			
Colleges, Universities, & Professional Schools	20,900	20,900	20,700	11,800	11,600	12,100			
Health Care & Social Assistance	240,300	237,900	232,600	56,900	56,500	54,500	42,400	42,100	41,500
Ambulatory Health Care Services	87,100	85,800	84,400	21,400	21,200	20,800	17,700	17,600	17,100
Offices of Physicians	33,500	33,000	33,000						
Home Health Care Services	21,700	21,600	21,000						
Hospitals	66,300	66,200	64,600	18,600	18,600	17,700	11,600	11,600	11,400
Nursing & Residential Care Facilities	42,400	41,700	40,500						
Nursing Care Facilities	26,000	25,800	25,400						
Social Assistance	44,500	44,200	43,100						
Leisure & Hospitality	199,900	197,300	193,600	73,800	72,600	69,000	32,200	31,900	32,200
Arts, Entertainment, & Recreation	27,400	27,100	27,000	10,100	10,200	9,600			
Amusement, Gambling, & Recreation Industries	21,300	21,100	20,600	5,900	5,900	5,500			
Gambling Industries	10,400	10,500	10,600	2,100	2,100	2,100			
Accommodation & Food Services	172,500	170,200	166,600	63,700	62,400	59,400	27,200	26,900	27,900
Accommodation	27,500	27,300	26,600	13,300	13,300	12,700			
Food Services & Drinking Places	145,000	142,900	140,000	50,400	49,100	46,700	25,700	25,300	25,700
Other Services	65,600	65,700	65,500	18,800	18,800	18,500	12,700	12,600	12,700
Repair & Maintenance	19,400	19,500	19,300						
Automotive Repair & Maintenance	10,600	10,500	10,700						
Personal & Laundry Services	15,300	15,200	15,400						
Government	361,700	361,700	373,600	80,200	80,600	83,400	77,700	77,900	78,100
Federal Government	31,300	31,400	34,500	12,300	12,400	13,500	3,000	3,000	3,400
State Government	112,300	112,500	114,700	18,800	19,100	20,300	41,500	41,600	41,300
Local Government	218,100	217,800	224,400	49,100	49,100	49,600	33,200	33,300	33,400

## LOUISIANA &amp; MSAs NONFARM EMPLOYMENT

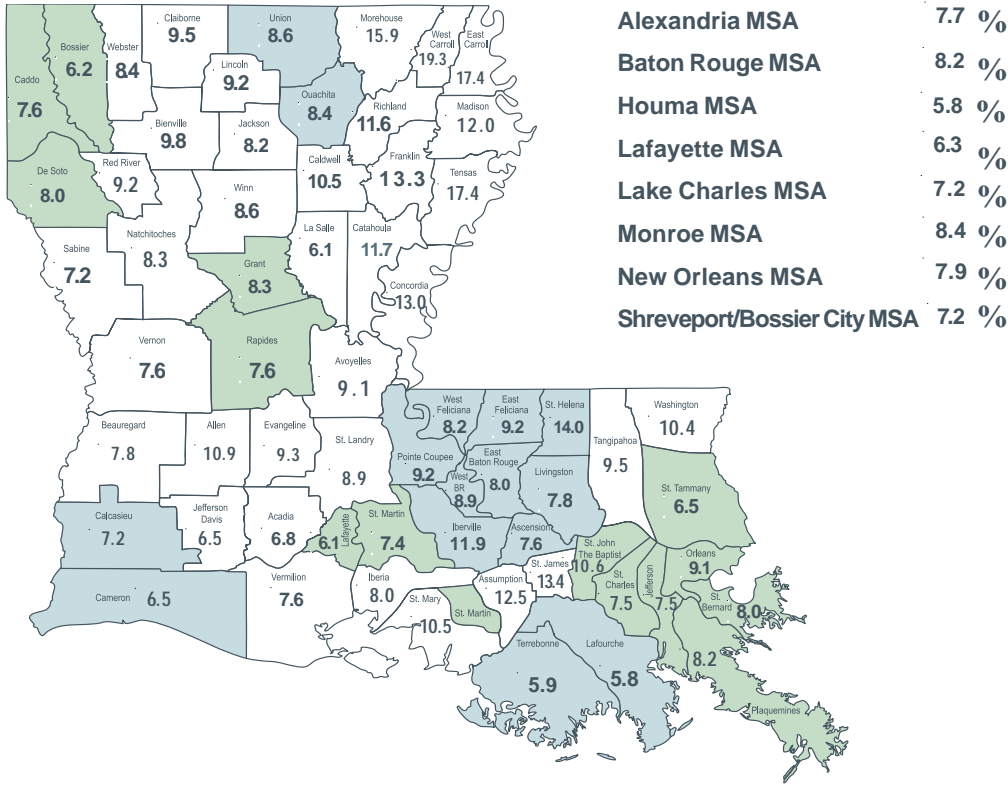
9

Not Seasonally Adjusted	SHREVEPORT-BOSSIER CITY MSA			LAFAYETTE MSA			LAKE CHARLES MSA		
	PREL	REV	REV	PREL	REV	REV	PREL	REV	REV
	MAR 2011	FEB 2011	MAR 2010	MAR 2011	FEB 2011	MAR 2010	MAR 2011	FEB 2011	MAR 2010
Total Nonfarm	179,500	177,900	174,800	146,100	147,600	145,600	89,900	89,400	89,600
Total Private	143,900	142,300	139,100	128,100	129,600	127,400	74,100	73,500	72,800
Goods-Producing	25,700	25,200	23,800	30,300	31,000	30,700	18,100	18,200	19,000
Mining & Logging	6,400	6,400	5,400	15,200	15,500	14,900	1,100	1,100	1,200
Oil & Gas Extraction									
Crude Petroleum & Natural Gas Extraction									
Support Activities for Mining				12,700	13,200	12,900			
Drilling Oil & Gas Wells									
Construction	9,300	9,000	8,200	5,700	5,900	6,700	8,000	8,100	8,800
Construction of Buildings									
Residential Building Construction									
Nonresidential Building Construction									
Heavy & Civil Engineering Construction							3,500	3,500	4,100
Utility System Construction									
Specialty Trade Contractors									
Manufacturing	10,000	9,800	10,200	9,400	9,600	9,100	9,000	9,000	9,000
Durable Goods									
Transportation Equipment Manufacturing	1,100	1,100	1,400						
Ship & Boat Building									
Nondurable Goods							6,800	6,800	6,800
Food Manufacturing									
Paper Manufacturing									
Petroleum & Coal Products Mfg. & Chemical Mfg.							6,400	6,400	6,400
Petroleum & Coal Products Manufacturing									
Chemical Manufacturing									
Basic Chemical Manufacturing									
Service-Providing	153,800	152,700	151,000	115,800	116,600	114,900	71,800	71,200	70,600
Private Service-Providing	118,200	117,100	115,300	97,800	98,600	96,700	56,000	55,300	53,800
Trade, Transportation, & Utilities	33,700	33,100	33,000	28,600	28,700	28,300	16,300	16,200	15,800
Wholesale Trade	6,600	6,500	6,400	7,600	7,600	7,400			
Merchant Wholesalers, Durable Goods									
Merchant Wholesalers, Nondurable Goods									
Retail Trade	20,800	20,400	20,500	17,200	17,300	17,100	10,000	10,000	10,000
Clothing & Clothing Accessories Stores, General Merchandise							3,300	3,300	3,400
Motor Vehicle & Parts Dealers									
Building Material & Garden Equipment & Supplies Dealers									
Food & Beverage Stores									
Grocery Stores									
Health & Personal Care Stores									
Gasoline Stations									
Clothing and Clothing Accessories Stores									
General Merchandise Stores	4,600	4,500	4,600	3,600	3,600	3,500			
Department Stores									
Transportation, Warehousing, & Utilities	6,300	6,200	6,100	3,800	3,800	3,800			
Transportation and Warehousing									
Truck Transportation									
Support Activities for Transportation									
Information	4,800	4,800	3,100	2,600	2,700	2,700			
Telecommunications									
Financial Activities	7,100	7,100	6,900	8,200	8,300	8,200			
Finance & Insurance									
Credit Intermediation & Related Activities									
Depository Credit Intermediation									
Insurance Carriers & Related Activities									
Real Estate & Rental & Leasing									
Professional & Business Services	16,400	16,400	16,000	16,800	17,100	16,600	6,800	6,800	6,900
Professional, Scientific, & Technical Services				8,000	8,100	7,700			
Legal Services									
Accounting, Tax Preparation, Bookkeeping & Payroll Services									
Architectural, Engineering, & Related Services									
Management of Companies & Enterprises									
Admin. & Support & Waste Mgmt. & Remediation Serv.	9,500	9,600	7,800						
Administrative & Support Services									
Employment Services									
Services to Buildings & Dwellings									
Education & Health Services	26,400	26,300	26,400	21,900	22,100	21,200			
Educational Services									
Colleges, Universities, & Professional Schools									
Health Care & Social Assistance	25,300	25,200	24,900	19,900	20,000	19,600			
Ambulatory Health Care Services									
Offices of Physicians									
Home Health Care Services									
Hospitals	9,700	9,700	9,600	5,200	5,300	5,400	3,500	3,500	3,400
Nursing & Residential Care Facilities									
Nursing Care Facilities									
Social Assistance									
Leisure & Hospitality	21,700	21,400	22,000	14,900	14,900	14,900	11,700	11,500	11,500
Arts, Entertainment, & Recreation	5,600	5,700	5,900						
Amusement, Gambling, & Recreation Industries	5,500	5,500	5,600						
Gambling Industries	4,300	4,300	4,600						
Accommodation & Food Services	16,100	15,700	16,100	13,100	13,100	13,100	10,300	10,100	10,100
Accommodation									
Food Services & Drinking Places	13,300	12,900	13,100	12,100	12,100	12,100			
Other Services	8,100	8,000	7,900	4,800	4,800	4,800			
Repair & Maintenance									
Automotive Repair & Maintenance									
Personal & Laundry Services									
Government	35,800	35,600	35,700	18,000	18,000	18,200	15,800	15,900	16,800
Federal Government	4,800	4,800	4,800	1,100	1,100	1,200	600	600	800
State Government	11,600	11,600	11,200	5,800	5,800	5,800	4,000	4,100	4,100
Local Government	19,400	19,200	19,700	11,100	11,100	11,200	11,200	11,200	11,900

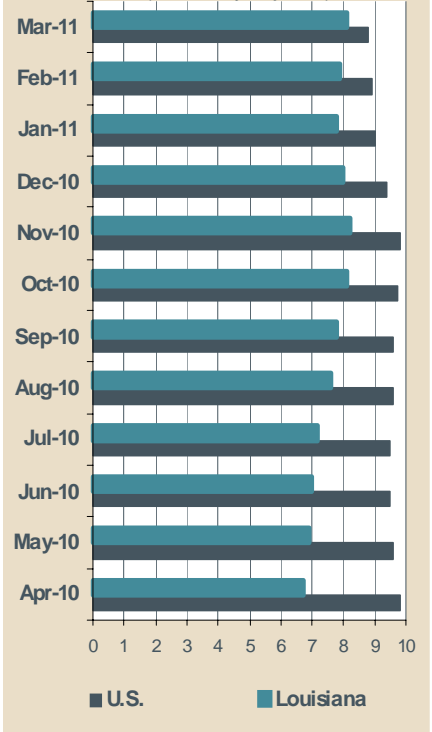
	MONROE MSA			HOUMA-BAYOU CANE- THIBODAU MSA			ALEXANDRIA MSA		
	PREL	REV	REV	PREL	REV	REV	PREL	REV	REV
	MAR	FEB	MAR	MAR	FEB	MAR	MAR	FEB	MAR
	2011	2011	2010	2011	2011	2010	2011	2011	2010
<i>Not Seasonally Adjusted</i>									
Total Nonfarm	76,200	75,600	76,800	94,100	94,100	91,300	64,100	63,100	63,100
Total Private	61,700	61,000	61,600	80,200	80,200	76,400	49,400	48,200	47,800
Goods-Producing	10,300	10,300	10,300	19,800	19,800	19,600	8,300	8,300	8,400
Mining & Logging				5,700	5,700	5,800			
Oil & Gas Extraction									
Crude Petroleum & Natural Gas Extraction									
Support Activities for Mining				4,700	4,700	5,000			
Drilling Oil & Gas Wells									
Construction				5,900	5,900	5,000			
Construction of Buildings									
Residential Building Construction									
Nonresidential Building Construction									
Heavy & Civil Engineering Construction									
Utility System Construction									
Specialty Trade Contractors									
Manufacturing	6,700	6,700	6,800						
Durable Goods									
Transportation Equipment Manufacturing									
Ship & Boat Building									
Nondurable Goods	5,000	5,000	5,000						
Food Manufacturing									
Paper Manufacturing									
Petroleum & Coal Products Mfg. & Chemical Mfg.									
Petroleum & Coal Products Manufacturing									
Chemical Manufacturing									
Basic Chemical Manufacturing									
Service-Providing	65,900	65,300	66,500	74,300	74,300	71,700	55,800	54,800	54,700
Private Service-Providing	51,400	50,700	51,300	60,400	60,400	56,800	41,100	39,900	39,400
Trade, Transportation, & Utilities	13,700	13,600	13,900	24,700	24,300	23,500	11,500	11,400	11,500
Wholesale Trade									
Merchant Wholesalers, Durable Goods									
Merchant Wholesalers, Nondurable Goods									
Retail Trade	9,400	9,400	9,600	10,700	10,600	10,800	7,800	7,700	7,700
Clothing & Clothing Accessories Stores, General Merchandise	3,400	3,400	3,400						
Motor Vehicle & Parts Dealers									
Building Material & Garden Equipment & Supplies Dealers									
Food & Beverage Stores									
Grocery Stores									
Health & Personal Care Stores									
Gasoline Stations									
Clothing and Clothing Accessories Stores									
General Merchandise Stores									
Department Stores									
Transportation, Warehousing, & Utilities									
Transportation and Warehousing									
Truck Transportation									
Support Activities for Transportation				4,400	4,400	4,300			
Information									
Telecommunications									
Financial Activities									
Finance & Insurance									
Credit Intermediation & Related Activities									
Depository Credit Intermediation									
Insurance Carriers & Related Activities									
Real Estate & Rental & Leasing									
Professional & Business Services	7,200	7,200	7,200						
Professional, Scientific, & Technical Services									
Legal Services									
Accounting, Tax Preparation, Bookkeeping & Payroll Services									
Architectural, Engineering, & Related Services									
Management of Companies & Enterprises									
Admin. & Support & Waste Mgmt. & Remediation Serv.									
Administrative & Support Services				4,800	4,800	3,700			
Employment Services				3,200	3,100	2,100			
Services to Buildings & Dwellings									
Education & Health Services	13,300	13,300	12,800						
Educational Services									
Colleges, Universities, & Professional Schools									
Health Care & Social Assistance									
Ambulatory Health Care Services									
Offices of Physicians									
Home Health Care Services									
Hospitals	3,600	3,600	3,400				4,400	4,400	4,000
Nursing & Residential Care Facilities									
Nursing Care Facilities									
Social Assistance									
Leisure & Hospitality	6,900	6,800	7,100	7,600	7,500	7,400			
Arts, Entertainment, & Recreation									
Amusement, Gambling, & Recreation Industries									
Gambling Industries									
Accommodation & Food Services									
Accommodation									
Food Services & Drinking Places									
Other Services									
Repair & Maintenance									
Automotive Repair & Maintenance									
Personal & Laundry Services									
Government	14,500	14,600	15,200	13,900	13,900	14,900	14,700	14,900	15,300
Federal Government	600	600	700	400	400	600	2,900	3,000	3,000
State Government	4,700	4,700	5,000	3,200	3,200	3,500	4,500	4,500	4,800
Local Government	9,200	9,300	9,500	10,300	10,300	10,800	7,300	7,400	7,500

# Louisiana Unemployment Rates (Not Seasonally Adjusted)

March 2011

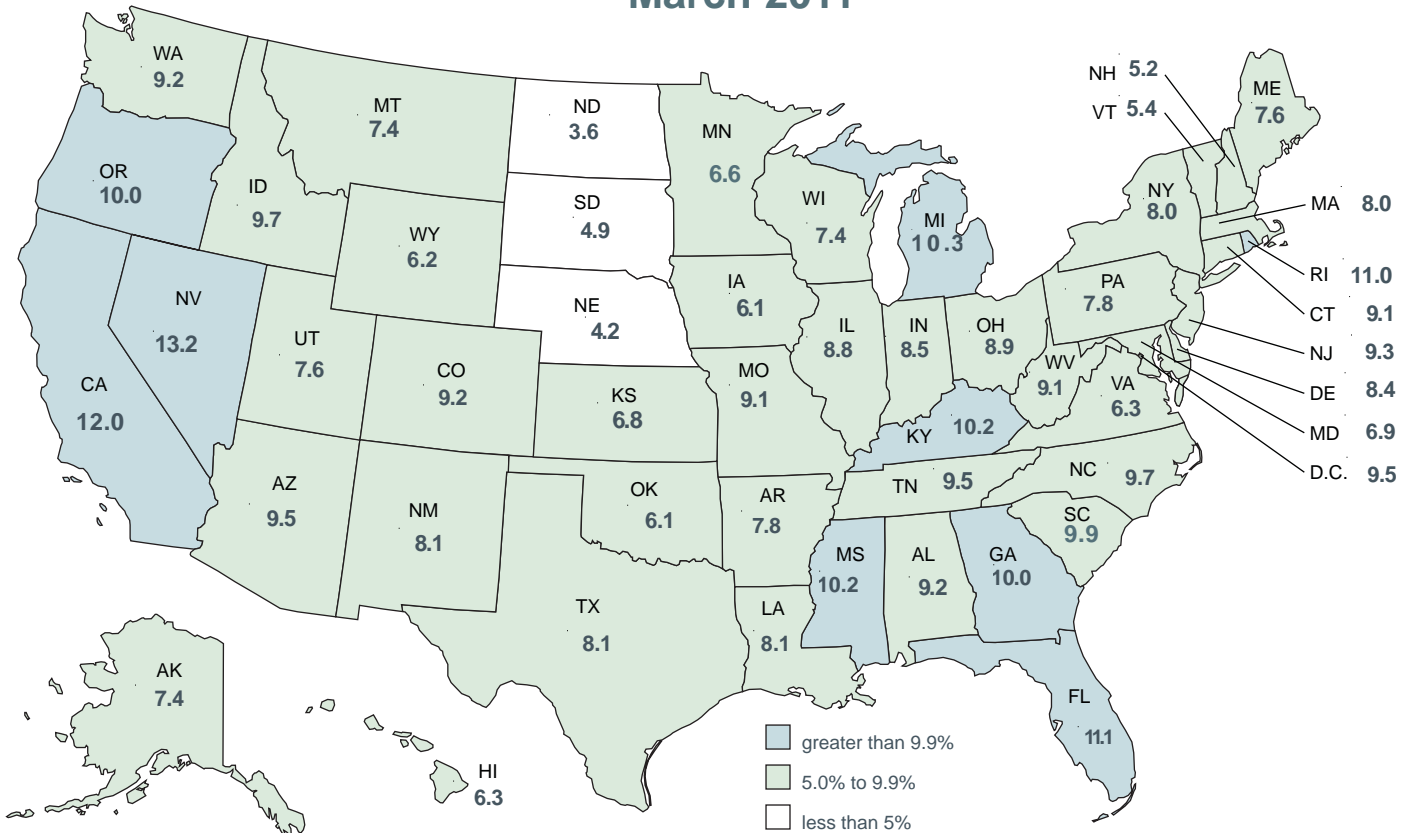


# United States - Louisiana Unemployment Rates (Seasonally Adjusted)



# United States Unemployment Rates (Seasonally Adjusted)

March 2011



United States Rate **8.8**

## CIVILIAN LABOR FORCE (Not Seasonally Adjusted)

Area	Preliminary March 2011			Revised February 2011			Revised March 2010		
	Employed	Unemployed	Rate	Employed	Unemployed	Rate	Employed	Unemployed	Rate
<b>UNITED STATES</b>	<b>138,962,000</b>	<b>14,060,000</b>	<b>9.2</b>	<b>138,093,000</b>	<b>14,542,000</b>	<b>9.5</b>	<b>137,983,000</b>	<b>15,678,000</b>	<b>10.2</b>
<b>LOUISIANA</b>	<b>1,888,366</b>	<b>164,598</b>	<b>8.0</b>	<b>1,881,314</b>	<b>162,591</b>	<b>8.0</b>	<b>1,915,794</b>	<b>139,512</b>	<b>6.8</b>
<b>ALEXANDRIA MSA</b>	<b>63,289</b>	<b>5,264</b>	<b>7.7</b>	<b>62,339</b>	<b>5,155</b>	<b>7.6</b>	<b>63,778</b>	<b>4,429</b>	<b>6.5</b>
Grant	7,920	715	8.3	7,802	693	8.2	7,982	645	7.5
Rapides	55,369	4,549	7.6	54,537	4,462	7.6	55,796	3,784	6.4
<b>BATON ROUGE MSA</b>	<b>342,812</b>	<b>30,657</b>	<b>8.2</b>	<b>342,570</b>	<b>29,971</b>	<b>8.0</b>	<b>350,664</b>	<b>24,790</b>	<b>6.6</b>
Ascension	46,929	3,847	7.6	46,895	3,728	7.4	48,003	3,315	6.5
East Baton Rouge	198,003	17,264	8.0	197,863	16,645	7.8	202,538	13,627	6.3
East Feliciana	7,283	736	9.2	7,277	725	9.1	7,449	588	7.3
Iberville	10,895	1,477	11.9	10,887	1,471	11.9	11,144	1,199	9.7
Livingston	53,603	4,554	7.8	53,565	4,547	7.8	54,831	3,853	6.6
Pointe Coupee	8,576	867	9.2	8,570	978	10.2	8,772	651	6.9
St. Helena	3,654	593	14.0	3,651	592	14.0	3,738	474	11.3
West Baton Rouge	9,623	940	8.9	9,616	909	8.6	9,843	723	6.8
West Feliciana	4,248	379	8.2	4,245	374	8.1	4,346	360	7.6
<b>HOUMA-BAYOU CANE- THIBODAUX MSA</b>	<b>97,045</b>	<b>6,024</b>	<b>5.8</b>	<b>97,090</b>	<b>5,963</b>	<b>5.8</b>	<b>96,537</b>	<b>5,109</b>	<b>5.0</b>
Lafourche	45,824	2,823	5.8	45,845	2,818	5.8	45,584	2,335	4.9
Terrebonne	51,221	3,201	5.9	51,245	3,145	5.8	50,953	2,774	5.2
<b>LAFAYETTE MSA</b>	<b>124,755</b>	<b>8,439</b>	<b>6.3</b>	<b>125,896</b>	<b>8,401</b>	<b>6.3</b>	<b>126,909</b>	<b>7,388</b>	<b>5.5</b>
Lafayette	103,159	6,708	6.1	104,103	6,663	6.0	104,940	5,765	5.2
St. Martin	21,596	1,731	7.4	21,793	1,738	7.4	21,969	1,623	6.9
<b>LAKE CHARLES MSA</b>	<b>87,483</b>	<b>6,791</b>	<b>7.2</b>	<b>86,589</b>	<b>6,782</b>	<b>7.3</b>	<b>88,648</b>	<b>5,987</b>	<b>6.3</b>
Calcasieu	84,608	6,591	7.2	83,743	6,584	7.3	85,734	5,800	6.3
Cameron	2,875	200	6.5	2,846	198	6.5	2,914	187	6.0
<b>MONROE MSA</b>	<b>73,964</b>	<b>6,795</b>	<b>8.4</b>	<b>73,384</b>	<b>6,740</b>	<b>8.4</b>	<b>76,123</b>	<b>5,819</b>	<b>7.1</b>
Ouachita	64,929	5,944	8.4	64,420	5,836	8.3	66,824	4,967	6.9
Union	9,035	851	8.6	8,964	904	9.2	9,299	852	8.4
<b>NEW ORLEANS-METairie- KENNER MSA</b>	<b>496,675</b>	<b>42,493</b>	<b>7.9</b>	<b>494,089</b>	<b>41,811</b>	<b>7.8</b>	<b>501,865</b>	<b>35,618</b>	<b>6.6</b>
Jefferson	196,780	15,878	7.5	195,755	15,717	7.4	198,836	13,757	6.5
New Orleans City/Orleans	133,565	13,431	9.1	132,869	13,101	9.0	134,960	10,926	7.5
Plaquemines	7,417	666	8.2	7,378	670	8.3	7,494	503	6.3
St. Bernard	16,860	1,474	8.0	16,772	1,491	8.2	17,036	1,133	6.2
St. Charles	22,075	1,788	7.5	21,960	1,799	7.6	22,305	1,564	6.6
St. John Baptist	18,592	2,216	10.6	18,495	2,164	10.5	18,787	1,947	9.4
St. Tammany	101,387	7,042	6.5	100,860	6,868	6.4	102,447	5,787	5.3
<b>SHREVEPORT-BOSSIER CITY MSA</b>	<b>169,878</b>	<b>13,213</b>	<b>7.2</b>	<b>168,626</b>	<b>13,054</b>	<b>7.2</b>	<b>170,975</b>	<b>11,467</b>	<b>6.3</b>
Bossier	50,386	3,315	6.2	50,015	3,262	6.1	50,711	2,824	5.3
Caddo	109,075	8,988	7.6	108,272	8,855	7.6	109,780	7,831	6.7
De Soto	10,417	910	8.0	10,340	936	8.3	10,484	812	7.2
<b>NON-MSA PARISHES</b>									
Acadia (Crowley) <sup>1</sup>	23,825	1,729	6.8	23,683	1,736	6.8	24,292	1,641	6.3
Allen	7,623	934	10.9	7,616	934	10.9	7,838	996	11.3
Assumption (Pierre Part) <sup>1</sup>	8,975	1,287	12.5	8,985	1,287	12.5	9,258	974	9.5
Avoyelles	14,986	1,495	9.1	14,886	1,462	8.9	15,101	1,224	7.5
Beauregard (DeRidder) <sup>1</sup>	13,257	1,123	7.8	13,235	1,086	7.6	13,521	1,003	6.9
Bienville	5,827	631	9.8	5,828	616	9.6	5,744	546	8.7
Caldwell	4,018	473	10.5	4,008	472	10.5	4,069	462	10.2
Catahoula	3,700	489	11.7	3,711	502	11.9	3,839	426	10.0
Claiborne	5,951	622	9.5	5,935	609	9.3	5,930	543	8.4
Concordia (Natchez, MS-LA) <sup>1</sup>	6,290	939	13.0	6,281	965	13.3	6,556	740	10.1
East Carroll	2,341	493	17.4	2,347	526	18.3	2,540	413	14.0
Evangeline	11,352	1,169	9.3	11,239	1,183	9.5	11,557	982	7.8
Franklin	6,651	1,018	13.3	6,668	1,042	13.5	6,906	809	10.5
Iberia (New Iberia) <sup>1</sup>	29,922	2,608	8.0	29,775	2,603	8.0	30,200	2,553	7.8
Jackson (Ruston) <sup>1</sup>	5,966	536	8.2	5,922	527	8.2	6,015	487	7.5
Jefferson Davis (Jennings) <sup>1</sup>	13,387	936	6.5	13,359	913	6.4	13,504	816	5.7
La Salle	6,301	407	6.1	6,309	401	6.0	6,230	364	5.5
Lincoln (Ruston) <sup>1</sup>	17,721	1,787	9.2	17,587	1,740	9.0	17,867	1,345	7.0
Madison (Tallulah) <sup>1</sup>	3,974	542	12.0	3,957	555	12.3	4,069	450	10.0
Morehouse (Bastrop) <sup>1</sup>	9,371	1,767	15.9	9,350	1,777	16.0	9,757	1,545	13.7
Natchitoches (Natchitoches) <sup>1</sup>	15,651	1,419	8.3	15,546	1,344	8.0	15,829	1,206	7.1
Red River	3,313	335	9.2	3,298	331	9.1	3,312	281	7.8
Richland	8,138	1,066	11.6	8,042	1,101	12.0	8,121	889	9.9
Sabine	8,759	675	7.2	8,723	681	7.2	8,735	588	6.3
St. James	8,247	1,271	13.4	8,209	1,252	13.2	8,477	955	10.1
St. Landry (Opelousas, Eunice) <sup>1</sup>	34,693	3,410	8.9	34,533	3,416	9.0	35,537	2,954	7.7
St. Mary (Morgan City) <sup>1</sup>	20,285	2,374	10.5	20,187	2,359	10.5	20,949	2,084	9.0
Tangipahoa (Hammond) <sup>1</sup>	48,095	5,075	9.5	47,871	5,043	9.5	48,355	4,234	8.1
Tensas	1,490	314	17.4	1,510	310	17.0	1,703	289	14.5
Vermilion (Abbeville) <sup>1</sup>	21,636	1,772	7.6	21,688	1,764	7.5	22,344	1,701	7.1
Vernon (Fort Polk South) <sup>1</sup>	19,201	1,576	7.6	19,044	1,486	7.2	19,732	1,216	5.8
Washington (Bogalusa) <sup>1</sup>	13,792	1,596	10.4	13,768	1,574	10.3	14,433	1,411	8.9
Webster (Mindon) <sup>1</sup>	18,268	1,677	8.4	18,166	1,689	8.5	18,574	1,458	7.3
West Carroll	3,391	810	19.3	3,395	853	20.1	3,630	802	18.1
Winn	6,069	569	8.6	6,072	575	8.7	5,770	516	8.2

<sup>1</sup>In addition to the eight (8) Metropolitan Statistical Areas (MSAs) in Louisiana, there are seventeen (17) Micropolitan Statistical Areas (MCs): Jackson and Lincoln Parishes combine to constitute one MC area. Civilian Labor Force can be derived by adding employed and unemployed. For related information or data, please visit: [www.bls.gov/lau/home.htm](http://www.bls.gov/lau/home.htm).

**LOUISIANA - PRIVATE EMPLOYMENT (Not Seasonally Adjusted)**

	Avg. Weekly Earnings (\$)			Avg. Weekly Hours			Avg. Hourly Earnings (\$)		
	MAR	FEB	MAR	MAR	FEB	MAR	MAR	FEB	MAR
	2011	2011	2010	2011	2011	2010	2011	2011	2010
Total Private	715.64	727.62	704.31	35.8	36.2	36.1	19.99	20.10	19.51
Goods-Producing	974.84	985.73	992.71	40.5	41.4	42.9	24.07	23.81	23.14
Private Service-Providing	649.79	662.05	630.55	34.6	34.9	34.4	18.78	18.97	18.33
Construction	877.59	894.74	915.16	39.8	40.8	43.6	22.05	21.93	20.99
Manufacturing	1,002.73	992.26	984.49	40.4	40.8	41.4	24.82	24.32	23.78
Trade, Transportation, and Utilities	650.50	644.45	620.60	36.3	36.7	36.7	17.92	17.56	16.91
Financial Activities	659.53	724.68	692.52	36.6	36.6	35.1	18.02	19.80	19.73
Professional and Business Services	958.13	976.69	909.08	39.3	39.8	38.8	24.38	24.54	23.43
Education and Health Services	585.15	585.21	576.07	32.8	33.1	32.4	17.84	17.68	17.78
Leisure and Hospitality	333.47	328.03	325.42	27.2	26.8	27.3	12.26	12.24	11.92

**METROPOLITAN STATISTICAL AREA (MSA) PRIVATE EMPLOYMENT (Not Seasonally Adjusted)**

	Avg. Weekly Earnings (\$)			Avg. Weekly Hours			Avg. Hourly Earnings (\$)		
	MAR	FEB	MAR	MAR	FEB	MAR	MAR	FEB	MAR
	2011	2011	2010	2011	2011	2010	2011	2011	2010
Alexandria	654.84	638.67	530.62	36.4	35.8	34.3	17.99	17.84	15.47
Baton Rouge	749.06	772.54	732.89	35.2	36.1	34.8	21.28	21.40	21.06
Houma	812.82	834.95	838.39	39.4	40.2	40.6	20.63	20.77	20.65
Lafayette	725.33	739.48	641.83	36.8	36.9	36.2	19.71	20.04	17.73
Lake Charles	807.91	818.07	758.76	39.2	40.2	37.9	20.61	20.35	20.02
Monroe	536.99	538.03	523.02	34.6	34.6	34.5	15.52	15.55	15.16
New Orleans	828.50	824.01	832.00	36.1	36.3	38.2	22.95	22.70	21.78
Shreveport	581.16	627.00	646.33	33.4	33.0	34.6	17.40	19.00	18.68

**AVERAGE HOURS AND EARNINGS FOR PRODUCTION WORKERS IN MANUFACTURING AND SELECTED NONMANUFACTURING INDUSTRIES (Not Seasonally Adjusted)**

	Avg. Weekly Earnings (\$)			Avg. Weekly Hours			Avg. Hourly Earnings (\$)		
	MAR	FEB	MAR	MAR	FEB	MAR	MAR	FEB	MAR
	2011	2011	2010	2011	2011	2010	2011	2011	2010
Louisiana									
Mining & Logging	957.59	1,010.94	995.28	39.8	42.0	42.9	24.06	24.07	23.20
Manufacturing	860.80	895.57	901.69	40.0	41.5	41.9	21.52	21.58	21.52
Durable Goods	916.33	898.03	835.82	43.0	42.4	40.3	21.31	21.18	20.74
Nondurable Goods	799.69	892.62	976.26	36.7	40.5	43.7	21.79	22.04	22.34
New Orleans MSA									
Ship and Boat Building	880.50	823.50	792.23	38.5	37.5	37.6	22.87	21.96	21.07

The 97,200 production workers in all manufacturing earned an average of \$860.80 per week in March 2011. Average weekly hours were 40.0, and average hourly earnings were \$21.52.

**LOUISIANA UNEMPLOYMENT INSURANCE by CLAIMANT'S PARISH of RESIDENCE**

**WEEK ENDING - March 12, 2011**

RLMA/PARISH	INITIAL CLAIMS	WEEKS CLAIMED	RLMA/PARISH	INITIAL CLAIMS	WEEKS CLAIMED	RLMA/PARISH	INITIAL CLAIMS	WEEKS CLAIMED
<b>RLMA 1</b>	<b>756</b>	<b>10,585</b>	<b>RLMA 4</b>	<b>322</b>	<b>5,332</b>	<b>RLMA 7</b>	<b>385</b>	<b>4,940</b>
JEFFERSON	299	4,250	ACADIA	21	347	BIENVILLE	14	173
ORLEANS	263	3,244	EVANGELINE	14	274	BOSSIER	52	739
PLAQUEMINES	11	180	IBERIA	38	608	CADDO	188	2,318
ST. BERNARD	0	2	LAFAYETTE	99	1,658	CLAIBORNE	12	120
ST. CHARLES	29	403	ST. LANDRY	59	853	DESOTO	20	205
ST. JAMES	18	379	ST. MARTIN	36	400	LINCOLN	29	445
ST. JOHN	37	619	ST. MARY	32	744	NATCHITOCHEs	25	289
ST. TAMMANY	99	1,508	VERMILION	23	448	RED RIVER	2	80
						SABINE	12	119
						WEBSTER	31	452
<b>RLMA 2</b>	<b>646</b>	<b>9,351</b>	<b>RLMA 5</b>	<b>220</b>	<b>2,247</b>	<b>RLMA 8</b>	<b>213</b>	<b>3,688</b>
ASCENSION	74	951	ALLEN	32	167	CALDWELL	5	100
E. BATON ROUGE	301	4,346	BEAUREGARD	29	303	EAST CARROLL	7	140
EAST FELICIANA	15	186	CALCASIEU	140	1,539	FRANKLIN	15	322
IBERVILLE	25	441	CAMERON	2	31	JACKSON	8	139
LIVINGSTON	82	1,099	JEFF. DAVIS	17	207	MADISON	3	128
POINTE COUPEE	9	214				MOREHOUSE	33	520
ST. HELENA	2	72	<b>RLMA 6</b>	<b>219</b>	<b>2,721</b>	OUACHITA	99	1,551
TANGIPAHOA	85	1,370	AVOYELLES	31	380	RICHLAND	17	322
WASHINGTON	21	350	CATAHOULA	5	126	TENSAS	4	86
W. BATON ROUGE	21	261	CONCORDIA	9	190	UNION	15	201
WEST FELICIANA	11	61	GRANT	13	168	WEST CARROLL	7	179
			LASALLE	2	80			
<b>RLMA 3</b>	<b>123</b>	<b>1,785</b>	RAPIDES	91	1,163			
ASSUMPTION	23	379	VERNON	55	500			
LAFOURCHE	38	632	WINN	13	114			
TERREBONNE	62	774						

RLMA = REGIONAL LABOR MARKET AREA

THE ABOVE FIGURES INCLUDE REGULAR UNEMPLOYMENT INSURANCE (UI), UNEMPLOYMENT CLAIMS for FEDERAL EMPLOYEES (UCFE), and UNEMPLOYMENT CLAIMS for EX-SERVICE MEMBERS (UCX) DATA ONLY.

## Labor Market Questions and Answers!

### Changes to Procedures for producing Current Employment Statistics (CES) estimates

#### Production of State estimates will transition from State Workforce Agencies to Bureau of Labor Statistics (BLS)

With the production of preliminary estimates for March, 2011, responsibility for the production of State and metropolitan area (MSA) estimates will transition from individual State Workforce Agencies to the BLS. State agencies will continue to provide the BLS with information on local events that may impact the estimates, such as strikes or large layoffs at businesses not covered by the survey, and to disseminate and analyze the CES estimates for local data users. This change is designed to improve the cost efficiency of the CES program and to reduce the potential for statistical bias in state and area estimates. A portion of the cost savings generated by this change is slated to be directed towards raising survey response rates in future years, which will decrease the level of statistical error in the CES estimates.

#### Refinement of procedures for producing State and MSA estimates

Estimates produced by the BLS at the statewide industry super-sector level will continue to utilize an improved outlier identification procedure that has been in effect since the production of January 2010 preliminary state CES estimates. Beginning with March 2011 preliminary estimates, this procedure also will be used in the estimation of detailed industry statewide estimates and MSA estimates. In addition at that time, the BLS will implement an improved imputation procedure for major survey non-respondents and a procedure to correct for differential response rates within an industry sector. The use of these procedures will allow BLS to rely less on individual analyst judgment and more on the use of standard statistical methodology. Statewide and MSA series with smaller sample sizes will continue to be estimated using a small domain model. Introduction of the new estimation procedures may result in more month to month variability in the estimates, particularly in smaller MSAs. For further information on the estimators see <http://www.bls.gov/opub/hom/homch2.htm>.

# Glossary & Technical Notes

**Average Hourly Earnings/Average Weekly Earnings/ Average Weekly Hours (CES/BLS)** - average total money earnings, in the survey week (i.e., the week that includes the twelfth of the month), of production workers plus nonsupervisory workers not in production, including overtime, paid vacation and sick leave.

**Civilian Labor Force** - that portion of the population, age sixteen or older, which is employed or unemployed and actively seeking employment during the reference week of the twelfth of the month.

**Employed** - the members of the labor force who worked for pay or profit, or had a job from which they were temporarily absent because of illness, vacation, labor dispute, or other reasons not reflecting a shortage of work, or who worked fifteen hours or more as unpaid workers in an enterprise operated by a member of the family.

**Unemployed** - the members of the labor force who did not work but were seeking work or were awaiting recall from layoffs or the beginning of a new job within thirty days.

**Unemployment Rate** - the number of unemployed persons expressed as a percentage of the labor force.

**Continued Claim** - each week claimed subsequent to the filing of the initial claim for a week of unemployment compensation.

**Current Employment Statistics (CES)** - estimates of nonfarm employment and production workers hours and earnings by industry. They are produced as part of a nationwide program, in cooperation with the Bureau of Labor Statistics (BLS), for the state and each metropolitan statistical area (MSA) from a sample of employing establishments.

**Current Population Survey (CPS)** - a monthly household survey of the U.S. population conducted for the Bureau of Labor Statistics (BLS) by the Bureau of Census, of 56,000 selected households. Respondents are interviewed to obtain information on the employment status of each household member age 16 and over, during the reference week of the twelfth.

**Durable Goods** - items with a normal life expectancy of three years or more. Automobiles, furniture, household appliances, and mobile homes are examples.

**Initial Claims** - a new claim, filed to open a claim for unemployment compensation.

**Metropolitan Statistical Area (MSA)** - a geographical area comprised of a parish generally containing a central city (or twin cities) of 50,000 inhabitants or more and contiguous parishes that are socially and economically integrated with the central city.

**Micropolitan Statistical Area (MC)** - a geographical area comprised of a parish containing a central city of at least 10,000 but less than 50,000 inhabitants and contiguous parishes that are socially and economically integrated with the central city.

**NAICS (North American Industry Classification System)** - an industry classification system that groups establishments into industries based on the activities in which they are primarily engaged.

**Nonfarm Employment** - employment by place of work that does not include the self employed, unpaid family workers, domestics, or agriculture workers. All estimates of nonfarm employment in this publication are in cooperation with the U.S. Department of Labor Bureau of Labor Statistics and include all full-time and part-time workers who were employed during the pay period including the twelfth of the month.

**Nondurable Goods** - items that generally last for only a short period of time (less than three years). Food, beverages, apparel, and gasoline are common examples.

**Seasonally Adjusted** - monthly data that is adjusted to minimize the changes in any time series which result from normal annual occurrences such as Christmas, summer vacations, and weather patterns.

**Subsector** - refers to the three-digit NAICS code, which will fall under the particular sector. Example: If Manufacturing (31-33) is the industry sector, then Food manufacturing (311), Paper manufacturing (322), Chemical manufacturing (325), Transportation equipment manufacturing (336), are some of the subsectors of manufacturing.

**Supersector** - refers to these five categories: Total Nonfarm, Total Private, Goods-Producing, Service-Providing, and Private Service-Providing.

**Summary Industry Sector** - a combination of industry sectors. A summary sector may or may not be published. The summary industry sectors are Mining & Logging; Construction; Manufacturing; Trade, Transportation, & Utilities; Information; Financial Activities; Professional & Business Services; Education & Health Services; Leisure & Hospitality; Other Services; and Government.

**Industry Sector** - 20 industry sectors based on two-digit NAICS code. They are Agriculture, Forestry, Fishing and Hunting (11), Mining (21), Utilities (22), Construction (23), Manufacturing (31-33), Wholesale Trade (42), Retail Trade (44-45), Transportation and Warehousing (48-49), Information (51), Finance and Insurance (52), Real Estate and Rental and Leasing (53), Professional and Technical Services (54), Management of Companies and Enterprises (55), Administrative and Waste Services (56), Educational Services (61), Health Care and Social Assistance (62), Arts, Entertainment, and Recreation (71), Accommodation and Food Services (72), Other Services (81), and Public Administration (92).

---

## Constraints of the monthly civilian labor force and nonfarm employment estimates:

The civilian labor force estimates are derived by a monthly survey of approximately 750 households throughout Louisiana following the Bureau of Labor Statistics (BLS) methodology. The US Census Bureau conducts the survey by calling randomly selected households and providing BLS with survey results. Households are asked for the number of residents who are sixteen and over and whether they were working or actively looking for work during the week of the twelfth of the month. Responses to these questions become part of the formula to determine the number of people employed and the number of individuals unemployed for the state, MSAs, and each parish every month.

The nonfarm employment estimates are derived from responses received from the monthly BLS survey of 2,757 businesses across the state surveyed directly by this agency, and an additional 2,500 businesses that respond directly to BLS with their employment data. Responses capture employment activity during the twelfth of each month. This survey relies on responses from these businesses to produce industry employment levels for the state and all metropolitan statistical areas.

Both data sets are comparable with estimates for the U.S., all 50 states, and 270 metropolitan areas across the U.S.

## LABOR MARKET INFORMATION WEB LINKS

### **Civilian Labor Force - LAUS (Local Area Unemployment Statistics) –**

#### **Employment, Unemployment and Unemployment Insurance Rate**

LA <http://www.voshost.com/altentry.asp?action=lmiguest>

Left menu: Historical Data Analysis – Employment and Wage Data – Labor Force Data – Labor Force Employment and Unemployment (LAUS)

States <http://data.bls.gov/cgi-bin/dsrv?la>

US <http://data.bls.gov/pdq/querytool.jsp?survey=ln>

#### **Consumer Price Index (US) <http://data.bls.gov/cgi-bin/surveymost?cu>**

### **Download Louisiana Workforce Commission’s Labor Market Information Products**

LA [http://www.laworks.net/Downloads/Downloads\\_LMI.asp](http://www.laworks.net/Downloads/Downloads_LMI.asp)

### **Employment and Wage Data – Quarterly Census of Employment and Wages (QCEW)**

LA <http://www.voshost.com/altentry.asp?action=lmiguest>

Left menu: Historical Data Analysis – Employment and Wage Data – Industry Data – Quarterly Census of Employment and Wages (QCEW)

States & US <http://data.bls.gov/cgi-bin/dsrv?en>

### **NAICS (North American Industry Classification System) Codes Look-Up Table**

<http://www.census.gov/eos/www/naics>

### **Nonfarm Employment, Hours and Earnings - CES (Current Employment Statistics)**

LA <http://www.voshost.com/altentry.asp?action=lmiguest>

Left menu: Historical Data Analysis – Employment and Wage Data – Industry Data – Current Employment Statistics (CES) – select Show Earnings Data under table

States <http://data.bls.gov/cgi-bin/dsrv?sm>

US <http://data.bls.gov/cgi-bin/dsrv?ce>

### **Unemployment Insurance Claimants Data (by Occupation) - Unemployment Insurance (UI)**

LA <http://www.voshost.com/altentry.asp?action=lmiguest>

Left menu: Historical Data Analysis – Employment and Wage Data – Labor Force Data – Unemployment Insurance Claimants

### **Unemployment Insurance Claims Data (by Region, Parish, Industry) - UI**

LA [http://www.laworks.net/LaborMarketInfo/LMI\\_UIClaimsReportMenu.asp](http://www.laworks.net/LaborMarketInfo/LMI_UIClaimsReportMenu.asp)

States & US <http://ows.doleta.gov/unemploy/claims.asp>

### **Unemployment Rates for all States - LAUS**

States <http://www.bls.gov/web/laumstrk.htm>



Office of Occupational Information Services  
Research & Statistics Division  
Post Office Box 94094  
Baton Rouge, LA 70804-9094

Data for: 3/2011



**Workforce At A Glance** is published monthly by the Louisiana Workforce Commission (LWC). The material in this publication is not copyrighted and may be reproduced; however, the LWC would appreciate credit for the material used and a copy of the reprint.

**LMI Staff:**

Patty Granier, Manager  
Ramona Robichaux, Supervisor  
Karen Clark, Layout and Design  
Benjamin Caldwell, Jonathan Helis, Tequila Perkins and Ronald Smith

**Contributors:**

Florence Gibson-Williams, Eula Sanders,  
Natalie Foster-Lawrence, Mark Jones, Helen Hillard,  
Tara Robinson, William F. Johnson, and Karen Clark

**Contact Us:**

Phone (225) 342-3141; Fax (225) 219-7759  
Toll Free (888) 302-7662;  
Email [OOIS@ldol.state.la.us](mailto:OOIS@ldol.state.la.us)

**Bobby Jindal, Governor**  
State of Louisiana

**Curt Eysink, Executive Director**  
Louisiana Workforce Commission

Raj Jindal,  
Information Technology Director

Visit our Web site:  
[www.laworks.net](http://www.laworks.net)