

Louisiana Workforce

at a glance

Release Date: July 28, 2017

Data For: June 2017

<http://www.laworks.net>

In This Issue

- 2 **Economic Comparison**
- 3-4 **NSA State & Area Employment**
- 5-8 **Data Trends (Graphs)**
- 9-15 **Nonfarm Employment**
- 16-17 **Unemployment Rates & Civilian Labor Force**
- 18 **Average Hours & Earnings**
- 19 **Workforce Development Area Data**
- 20-21 **Glossary, Data Constraints, Downloads & Web Links**

Louisiana's seasonally adjusted nonfarm employment was estimated at 1,988,800 for June 2017. The figure represents an increase of 4,400 jobs over the month and an increase of 20,700 jobs over the year. Private sector employment was estimated at 1,665,000, an increase of 4,700 jobs over the month and a gain of 22,300 jobs over the year.

Over the month the largest gain was seen in the construction sector which added 4,000 jobs, the largest gain for the series in the month of June. Leisure and hospitality increased by 3,700 jobs as accommodation and food services increased by 2,500 jobs. Mining and logging gained 800 jobs from May but has still lost jobs over the month in 28 of the last 32 months. Information increased by 600 jobs, its first increase in June since 2013. Education and health services added 300 jobs, with the health care and social assistance subsector adding 500 jobs. Education and health services has added jobs over the month for seven consecutive months. Other services showed a small gain of 100 jobs. The largest decline over the month was seen in the professional and business services sector which lost 2,900 jobs. Financial activities fell by 1,000 jobs as the real estate and rental and leasing subsector lost 600 jobs. Manufacturing declined by 500 jobs with non-durable goods manufacturing falling by 1,200 jobs. Trade, transportation, and utilities lost 400 jobs, its third straight loss, as the transportation, warehousing and utilities subsector declined by 900 jobs. Government showed 300 fewer jobs than in May with local government losing 600 jobs.

Over the year the largest gain was seen in the construction sector which added 15,600 jobs. Construction has seen over-the-year gains for nine consecutive months. The education and health services sector rose by 7,800 jobs over the year, with the health care and social assistance subsector gaining 6,100 jobs. Education and health services has added jobs over the year every month beginning in October 2006. Leisure and hospitality showed 4,400 more jobs last year, as the accommodation and food services sector gained 3,900 jobs. Other services added 1,700 jobs for its ninth straight over-the-year increase. Professional and business services added 1,500 jobs and has seen a gain over the year in four of the last five months. Information showed no change over the year. The largest decline over the year was seen in the trade, transportation, and utilities sector which lost 5,000 jobs for its 20th straight decrease. The transportation, warehousing, and utilities subsector lost 2,800 jobs over the year while retail trade lost 2,700 jobs. Mining and logging sector fell by 2,100 jobs. The series has lost jobs over the year for 30 straight months. Government fell by 1,600 jobs with local government losing 2,400 jobs. Manufacturing fell by 1,300 jobs, its 28th straight over-the-year loss, as the durable goods manufacturing subsector declined by 1,700 jobs. The financial activities sector showed 300 fewer jobs than in June 2016.

The June 2017 preliminary seasonally adjusted unemployment rate for Louisiana decreased to 5.5 percent from the May 2017 rate of 5.7 percent. The national unemployment rate for June of 2017 increased to 4.4 percent from the May rate of 4.3 percent. Total unemployment in the state for June was 114,911. The state civilian labor force decreased to 2,108,429, with a decrease in total employment to 1,993,518.

Seasonally Adjusted	United States	Louisiana
Civilian Labor Force	JUNE 2017	JUNE 2017
Labor Force	160,145,000	2,108,429
Employed	153,168,000	1,993,518
Unemployed	6,977,000	114,911
Unemployment Rate	4.4	5.5
Nonfarm Wage and Salary Employment	JUNE 2017	JUNE 2017
Total Nonfarm	146,404,000	1,988,800
Mining and Logging	715,000	35,800
Construction	6,896,000	155,600
Manufacturing	12,396,000	134,300
Trade, Transportation, and Utilities	27,389,000	382,800
Information	2,719,000	22,800
Financial Activities	8,449,000	91,700
Professional and Business Services	20,705,000	211,300
Education and Health Services	23,097,000	317,400
Leisure and Hospitality	15,924,000	236,400
Other Services	5,761,000	76,900
Government	22,353,000	323,800

All Employees Average Hours & Earnings		
(Not Seasonally Adjusted)		
	JUNE 2017	JUNE 2017
Construction	United States	Louisiana
Average Weekly Earnings	\$ 1,145.13	\$ 1,063.95
Average Weekly Hours	39.9	41.0
Average Hourly Wages	\$ 28.70	\$ 25.95
Manufacturing		
Average Weekly Earnings	\$ 1,078.12	\$ 1,071.87
Average Weekly Hours	40.9	42.1
Average Hourly Wages	\$ 26.36	\$ 25.46

Louisiana Unemployment Insurance Activities	
Claims	JUNE 2017
Initial New & Renewals	11,501
Continued Weekly Intrastate Only	73,888
Insured Unemployment Rate	1.2

United States Consumer Price Index	
	JUNE 2017
All Urban Consumers	245.0



The civilian labor force and nonfarm **estimates** are prepared according to Bureau of Labor Statistics (BLS) methodology and are comparable with the U.S. and other states' data. For more information, go to page 20.

Economic Comparison

Seasonally Adjusted	United States			Louisiana		
	JUNE 2017	MAY 2017	JUNE 2016	JUNE 2017	MAY 2017	JUNE 2016
Civilian Labor Force						
Labor Force	160,145,000	159,784,000	158,889,000	2,108,429	2,118,893	2,122,064
Employed	153,168,000	152,923,000	151,090,000	1,993,518	1,997,767	1,990,157
Unemployed	6,977,000	6,861,000	7,799,000	114,911	121,126	131,907
Unemployment Rate	4.4	4.3	4.9	5.5	5.7	6.2
Nonfarm Wage and Salary Employment						
Total Nonfarm	146,404,000	146,182,000	144,166,000	1,988,800	1,984,400	1,968,100
Mining and Logging	715,000	707,000	668,000	35,800	35,000	37,900
Construction	6,896,000	6,880,000	6,690,000	155,600	151,600	140,000
Manufacturing	12,396,000	12,395,000	12,347,000	134,300	134,800	135,600
Trade, Transportation, and Utilities	27,389,000	27,367,000	27,209,000	382,800	383,200	387,800
Information	2,719,000	2,723,000	2,780,000	22,800	22,200	22,800
Financial Activities	8,449,000	8,432,000	8,280,000	91,700	92,700	92,000
Professional and Business Services	20,705,000	20,670,000	20,081,000	211,300	214,200	209,800
Education and Health Services	23,097,000	23,052,000	22,603,000	317,400	317,100	309,600
Leisure and Hospitality	15,924,000	15,888,000	15,610,000	236,400	232,700	232,000
Other Services	5,761,000	5,750,000	5,683,000	76,900	76,800	75,200
Government	22,353,000	22,318,000	22,215,000	323,800	324,100	325,400

All Employees Average Hours & Earnings

Construction	United States (Not Seasonally Adjusted)			Louisiana (Not Seasonally Adjusted)		
	JUNE 2017	MAY 2017	JUNE 2016	JUNE 2017	MAY 2017	JUNE 2016
Average Weekly Earnings	\$ 1,145.13	\$ 1,130.89	\$ 1,113.21	\$ 1,063.95	\$ 1,098.20	\$ 1,060.33
Average Weekly Hours	39.9	39.5	39.8	41.0	41.9	41.5
Average Hourly Wages	\$ 28.70	\$ 28.63	\$ 27.97	\$ 25.95	\$ 26.21	\$ 25.55
Manufacturing						
Average Weekly Earnings	\$ 1,078.12	\$ 1,077.74	\$ 1,051.69	\$ 1,071.87	\$ 1,087.86	\$ 1,039.90
Average Weekly Hours	40.9	40.7	40.7	42.1	42.1	40.4
Average Hourly Wages	\$ 26.36	\$ 26.48	\$ 25.84	\$ 25.46	\$ 25.84	\$ 25.74

Louisiana Unemployment Insurance Activities

Claims	JUNE 2017	MAY 2017	JUNE 2016	% Change From	
				MAY 2017	JUNE 2016
Initial New & Renewals	11,501	10,334	11,811	11.3	-2.6
Continued Weekly Intrastate Only	73,888	68,947	60,641	7.2	21.8
Insured Unemployment Rate*	1.2	1.1	1.2	4.5	-4.9

*Insured unemployment rate is for the week including the 12th of the month.

United States Consumer Price Index (Not Seasonally Adjusted)

	June 2017	% Change From:		May 2017	% Change From:	
	Index	Prior Month	Prior Year	Index	Prior Month	Prior Year
All Urban Consumers	245.0	0.1	1.6	244.7	0.1	1.9

STATEWIDE

Louisiana's total nonfarm not seasonally adjusted employment was estimated at 1,990,600 for June 2017. The estimate represents a gain of 2,200 jobs over the month and an increase of 21,600 jobs from June 2016. Despite this annual gain, the series still has lost jobs over-the-year in 19 of the last 22 months.

The total private employment figure was estimated at 1,668,900 in June 2017. Private sector employment showed an over-the-month increase of 7,100 jobs and a gain of 24,800 jobs from June 2016. This series has seen over-the-year losses in 17 of the last 20 months.

Over the month the largest increase was seen in construction which rose by 5,400 jobs as the heavy and civil engineering construction subsector gained 2,100 jobs. The leisure and hospitality sector added 4,100 jobs for its fifth straight over-the-month gain. The arts, entertainment, and recreation subsector gained 2,300 jobs. Information rose by 900 jobs for its first over-the-month increase in the month of June since 2013. Mining and logging added 700 jobs and has added jobs over the month in four of the last five months. Both the manufacturing sector and the other services sector gained 500 jobs from May. Manufacturing has seen three straight months of employment gains, with the durable goods manufacturing subsector gaining 900 jobs from May. Other services has also added jobs over the last 3 months. Trade, transportation, and utilities showed an increase of 300 jobs as the wholesale trade subsector added 600 jobs. The largest decrease from May was seen in government, which lost 4,900 jobs. State government lost 4,700 jobs in its traditional decline as universities reach summer break. Professional and business services lost 3,000 jobs as the administrative and support and waste management and remediation services subsector lost 3,400 jobs. Education and health services lost 1,900 jobs with the educational services subsector falling by 2,600. Financial assistance lost 400 jobs from May.

The largest over-the-year gain was seen in the construction sector which added 14,600 jobs. The construction estimate of 155,100 is a series record for employment and is the sixth consecutive month with an over-the-year gain, led by a 9,400 job gain in construction of buildings. Heavy and civil engineering construction also added 8,600 jobs. Education and health services added 7,500 jobs over the year and has added jobs over the year every month beginning with the October 2006 figure. Health care and social assistance was responsible for 6,100 of the 7,500 jobs gained, while education services rose by 1,400. Leisure and hospitality added 4,900 jobs with the food services and drinking places subsector increasing by 3,100 jobs. Other services increased by 2,200 jobs for its fifth straight over-the-year gain. Professional and business services added 1,700 jobs as the administrative and support and waste management and remediation services subsector added 3,000 jobs. Financial activities increased by 400 jobs while information increased by 200. The largest decline over the year was seen in the trade, transportation, and utilities sector, which declined by 3,400 jobs, its 21st straight over-the-year loss. The retail trade subsector lost 2,300 jobs. Government showed 3,200 fewer jobs than last year as the local government subsector lost 3,500 jobs. The government figure is the lowest for June in series history and the 13th straight over-the-year loss. The mining and logging sector declined by 2,300 jobs from last year. Mining and logging has lost jobs over the year for 30 consecutive months. Manufacturing lost 1,000 jobs with durable goods manufacturing losing 1,500 jobs.

ALEXANDRIA

Total nonfarm employment for the Alexandria MSA was estimated at 63,200 for June 2017. This estimate shows a gain of 300 jobs over the month but a loss of 500 jobs over the year. The MSA has dropped jobs over the year for 11 consecutive months. Trade, transportation, and utilities lost 500 jobs over the year.

BATON ROUGE

Total nonfarm employment for the Baton Rouge MSA was estimated at 409,400 for June 2017. The estimate shows a loss of 800 jobs over the month but an increase of 4,500 jobs over the year. The over-the-year gain is the sixth in a row. Over the month education and health services added 900 jobs while government lost 1,600 jobs and construction lost 1,000. Over the year education and health services added 3,000, leisure and hospitality added 1,600 jobs and professional and business services added 1,300 jobs.

HAMMOND

The Hammond MSA total nonfarm employment was estimated at 45,400 for June 2017. This figure shows a loss of 100 jobs over the month but a gain of 900 jobs over the year. Goods producing employment showed no change over the month and gained 100 jobs over the year. Service providing employment lost 100 jobs over the month but added 800 jobs over the year.

HOUMA

Total nonfarm employment in the Houma MSA was estimated at 86,000 for June 2017. This shows a gain of 300 jobs over the month but a decline of 2,800 jobs over the year. Trade, transportation, and utilities lost 3,200 jobs over the year. Mining and logging lost 400 jobs over the year, its 29th consecutive month with an over-the-year loss.

LAFAYETTE

Total nonfarm employment for the Lafayette MSA was estimated at 199,800 for June 2017. This shows a loss of 900 jobs over the month and a loss of 1,100 jobs over the year. The MSA has lost jobs over the year for 29 consecutive months. Over the month manufacturing added 200 jobs. Mining and logging lost 800 jobs over the year for its 30th consecutive month with an over-the-year loss. Professional and business services lost 600 jobs, its 28th consecutive loss. Manufacturing added 200 jobs from last June, ending a streak of 31 straight months with an over-the-year decline.

LAKE CHARLES

Total nonfarm employment for the Lake Charles MSA was estimated at 114,300 for June 2017. This shows a gain of 1,400 jobs over the month and a gain of 5,600 jobs over the year. It is the 72nd consecutive month with an over-the-year increase and a new series high. The construction sector showed a gain of 1,100 jobs over the month and added 4,700 jobs over the year. This is construction's 21st consecutive month with an over-the-year increase. Trade, transportation, and utilities added 500 jobs over the year.

MONROE

Total nonfarm employment for the Monroe MSA was estimated at 80,200 for June 2017. This shows a gain of 400 jobs over the month and a gain of 1,200 jobs over the year. Trade, transportation, and utilities added 400 jobs over the year while government lost 400 jobs over the year, all in state government.

NEW ORLEANS

Total nonfarm employment for the New Orleans MSA was estimated at 578,900 for June 2017. This shows a loss of 700 jobs over the month but a gain of 4,100 jobs over the year. Over the month leisure and hospitality added 1,600 jobs while both the education and health services sector and the government sector lost 1,100 jobs. Over the year leisure and hospitality added 2,600 jobs while education and health services gained 2,400. Government lost 4,300 jobs over the year as local government declined by 3,500 jobs.

SHREVEPORT

Total nonfarm employment for the Shreveport MSA was estimated at 180,100 for June 2017. This shows a gain of 300 jobs over the month but a loss of 1,900 jobs over the year. This is the 26th consecutive month with an over-the-year loss. Over the month leisure and hospitality gained 300 jobs. Over the year government declined by 1,300 jobs, while professional and business services fell by 400 jobs and mining and logging also lost 400 jobs.

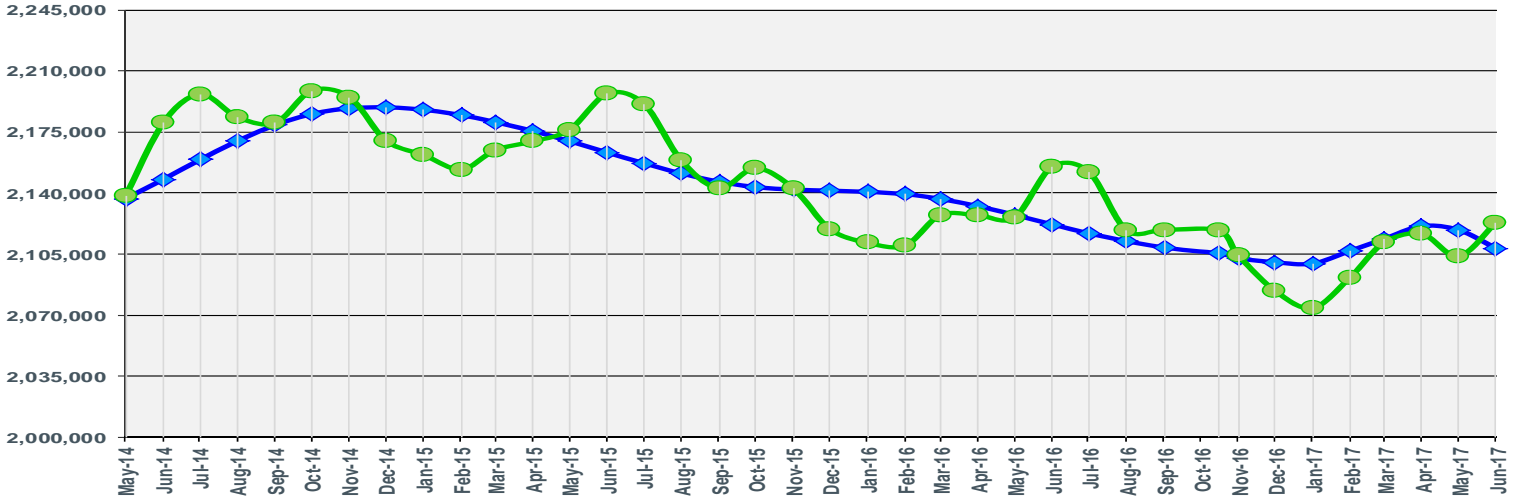
June 2017

Seasonally Adjusted
 2,108,429
 Over the Month: -10,464
 Over the Year: -13,635

Louisiana Civilian Labor Force

Not Seasonally Adjusted
 2,123,048
 Over the Month: 19,156
 Over the Year: -32,139

Seasonally Adjusted Not Seasonally Adjusted



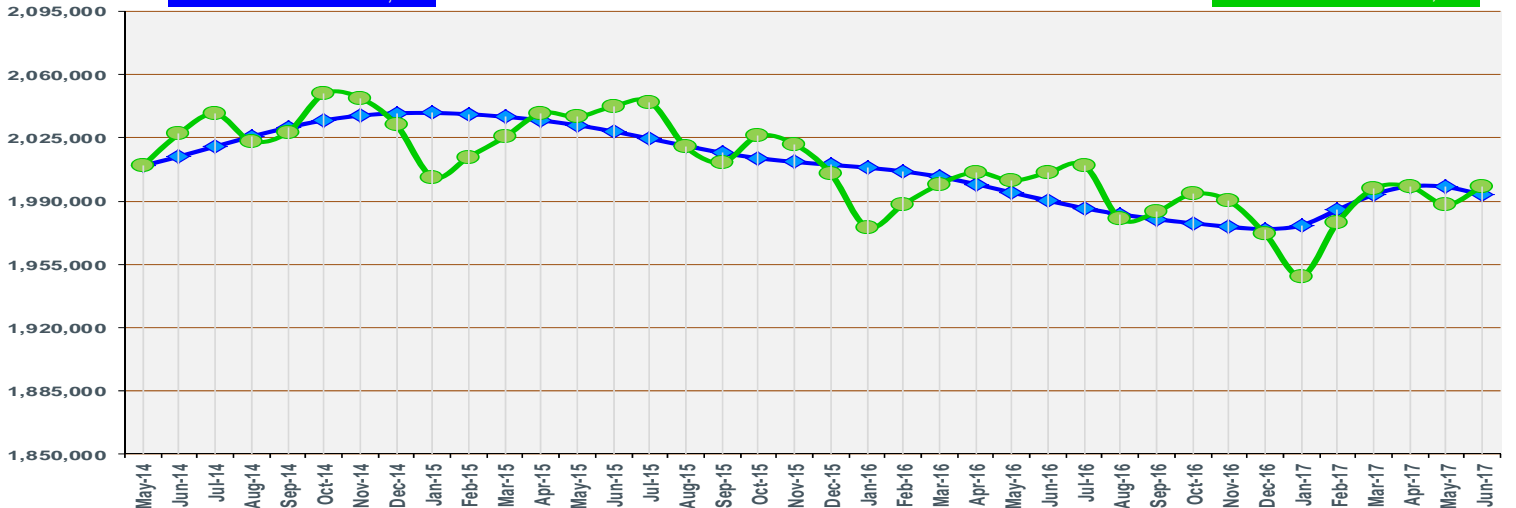
June 2017

Seasonally Adjusted
 1,993,518
 Over the Month: -4,249
 Over the Year: 3,361

Louisiana Civilian Labor Force Employment

Not Seasonally Adjusted
 1,998,184
 Over the Month: 10,170
 Over the Year: -7,502

Seasonally Adjusted Not Seasonally Adjusted



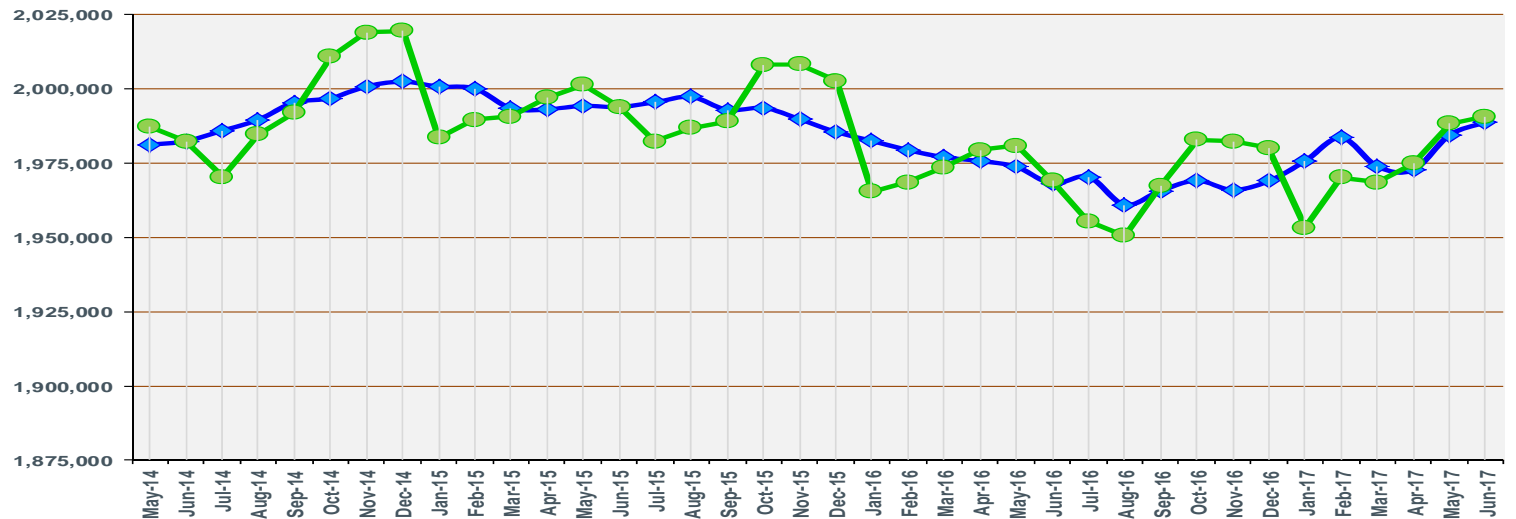
June 2017

Seasonally Adjusted
 1,988,800
 Over the Month: 4,400
 Over the Year: 20,700

Louisiana Nonfarm Employment

Not Seasonally Adjusted
 1,990,600
 Over the Month: 2,200
 Over the Year: 21,600

Seasonally Adjusted Not Seasonally Adjusted



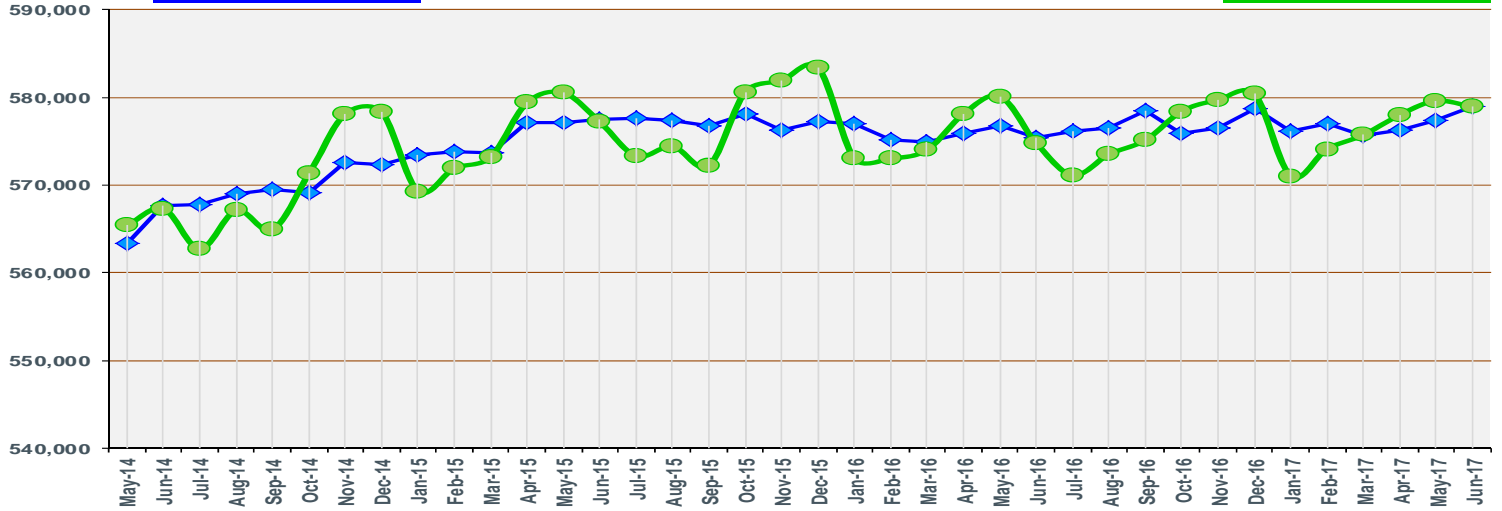
June 2017

Seasonally Adjusted
 578,900
 Over the Month: 1,500
 Over the Year: 3,500

New Orleans MSA Nonfarm Employment

— Seasonally Adjusted — Not Seasonally Adjusted

Not Seasonally Adjusted
 578,900
 Over the Month: -700
 Over the Year: 4,100



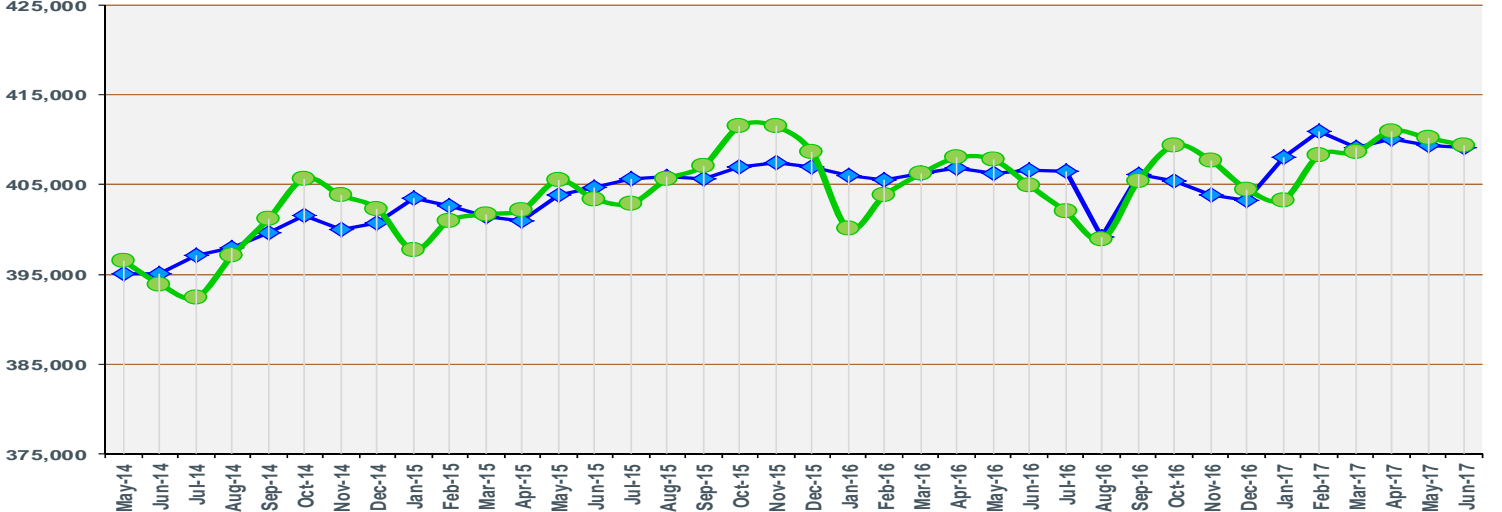
June 2017

Seasonally Adjusted
 409,100
 Over the Month: -300
 Over the Year: 2,500

Baton Rouge MSA Nonfarm Employment

— Seasonally Adjusted — Not Seasonally Adjusted

Not Seasonally Adjusted
 409,400
 Over the Month: -800
 Over the Year: 4,500



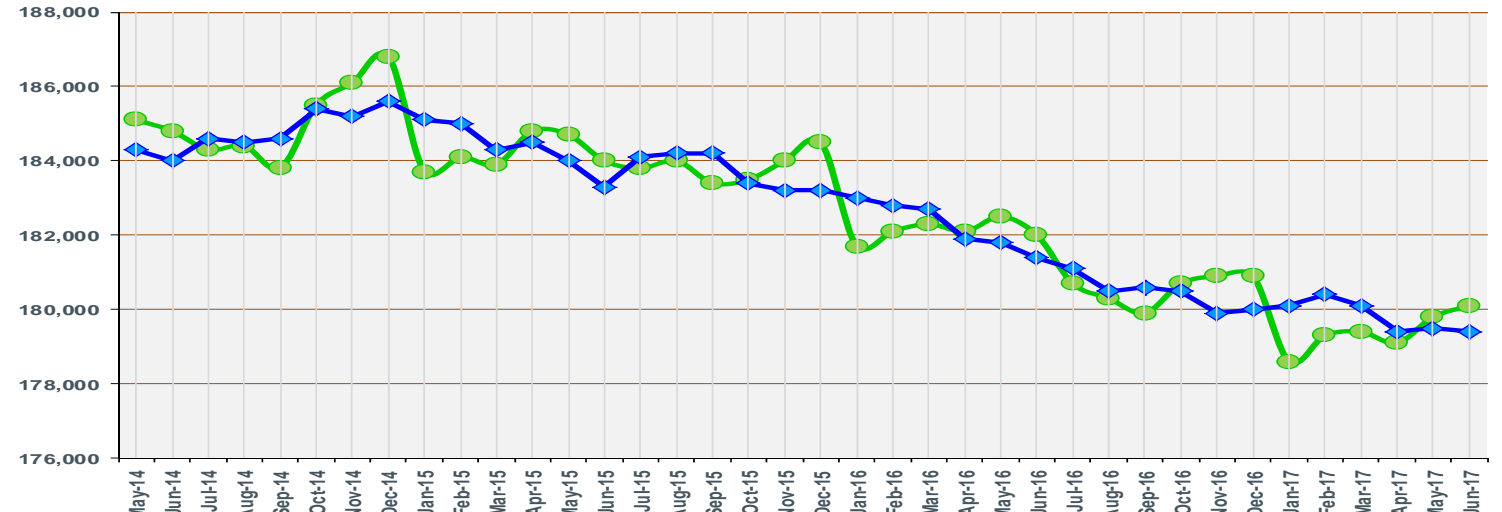
June 2017

Seasonally Adjusted
 179,400
 Over the Month: -100
 Over the Year: -2,000

Shreveport MSA Nonfarm Employment

— Seasonally Adjusted — Not Seasonally Adjusted

Not Seasonally Adjusted
 180,100
 Over the Month: 300
 Over the Year: -1,900

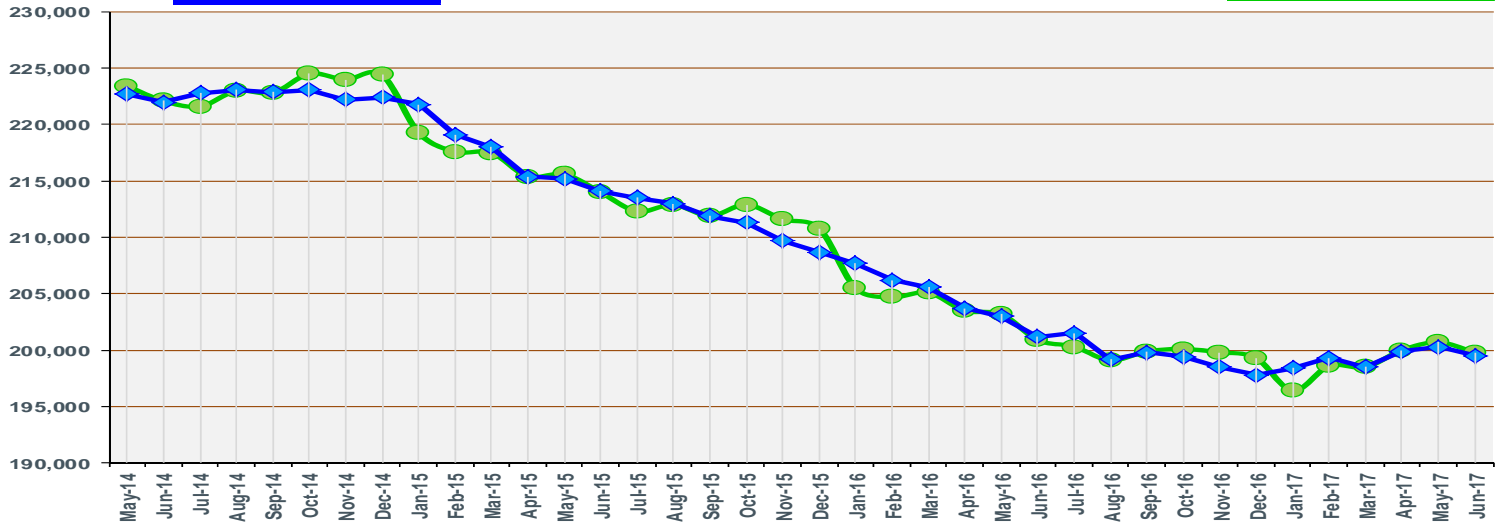
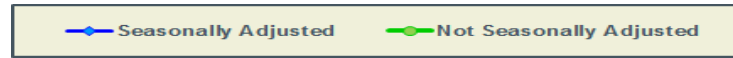


June 2017

Seasonally Adjusted
 199,500
 Over the Month: -800
 Over the Year: -1,700

Lafayette MSA Nonfarm Employment

Not Seasonally Adjusted
 199,800
 Over the Month: -900
 Over the Year: -1,100

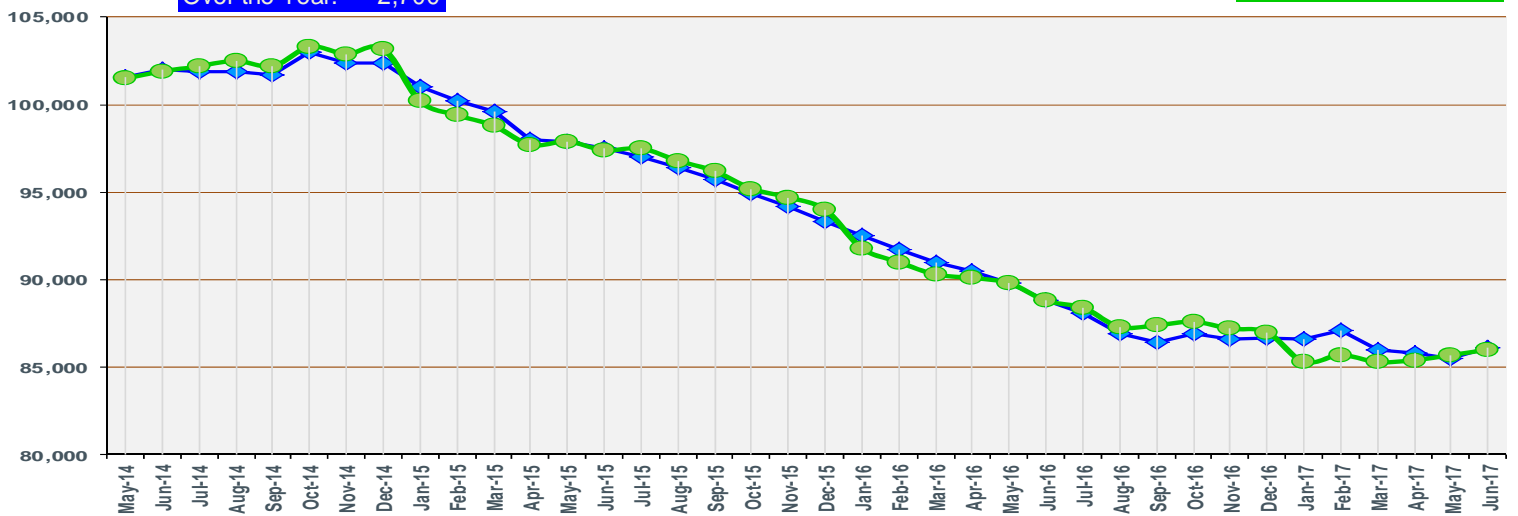


June 2017

Seasonally Adjusted
 86,100
 Over the Month: 600
 Over the Year: -2,700

Houma MSA Nonfarm Employment

Not Seasonally Adjusted
 86,000
 Over the Month: 300
 Over the Year: -2,800

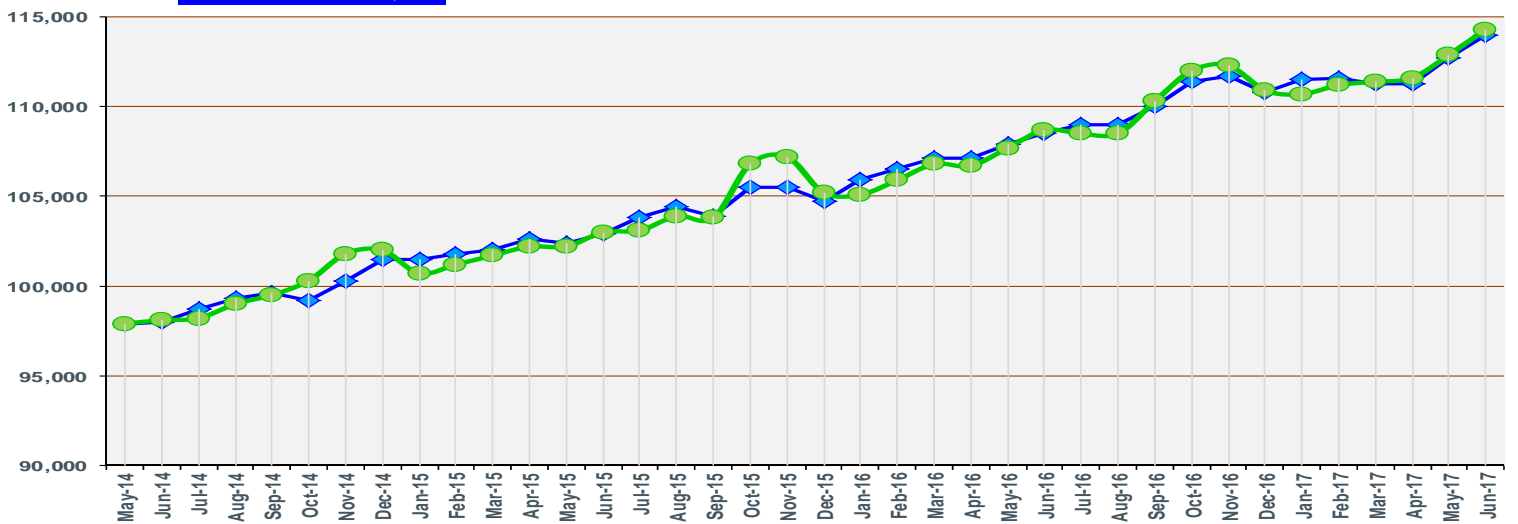
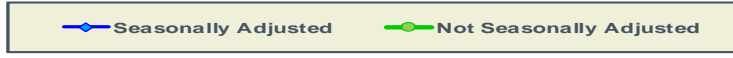


June 2017

Seasonally Adjusted
 114,000
 Over the Month: 1,300
 Over the Year: 5,500

Lake Charles MSA Nonfarm Employment

Not Seasonally Adjusted
 114,300
 Over the Month: 1,400
 Over the Year: 5,600



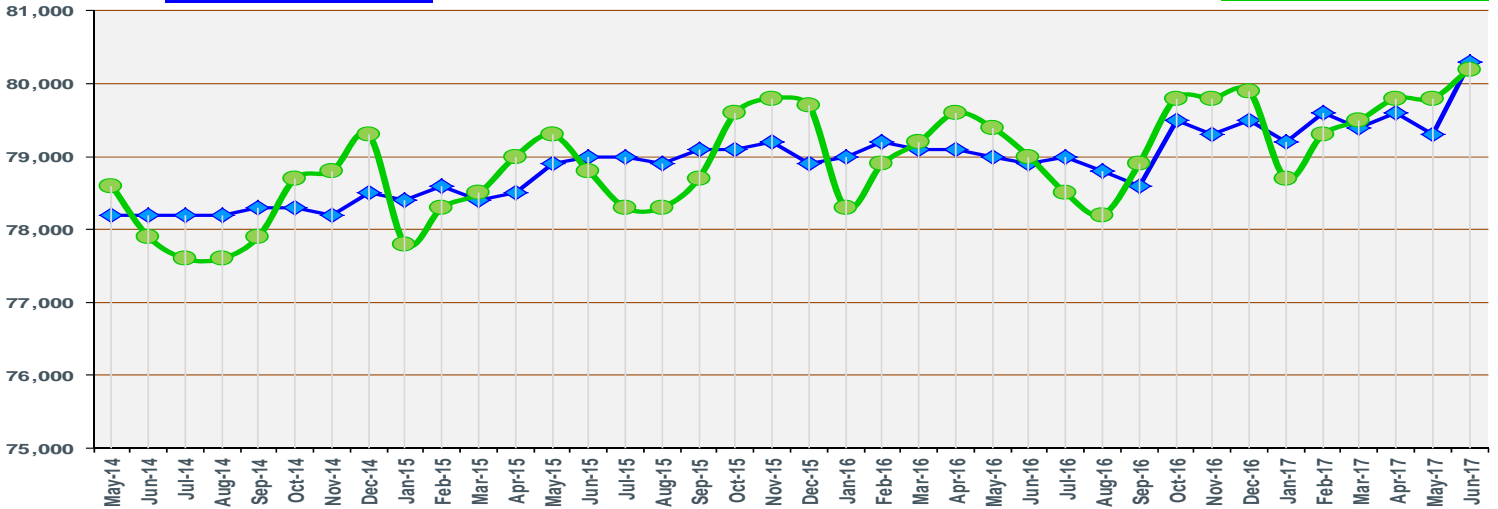
June 2017

Seasonally Adjusted
 80,300
 Over the Month: 1,000
 Over the Year: 1,400

Monroe MSA Nonfarm Employment

— Seasonally Adjusted — Not Seasonally Adjusted

Not Seasonally Adjusted
 80,200
 Over the Month: 400
 Over the Year: 1,200



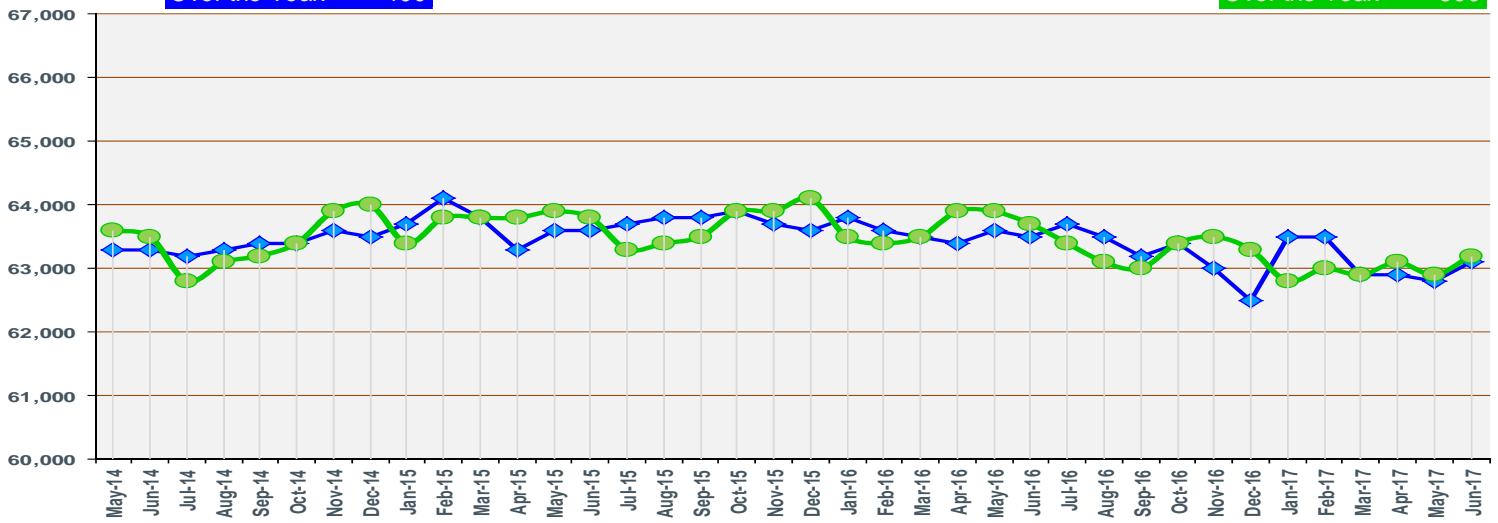
June 2017

Seasonally Adjusted
 63,100
 Over the Month: 300
 Over the Year: -400

Alexandria MSA Nonfarm Employment

— Seasonally Adjusted — Not Seasonally Adjusted

Not Seasonally Adjusted
 63,200
 Over the Month: 300
 Over the Year: -500



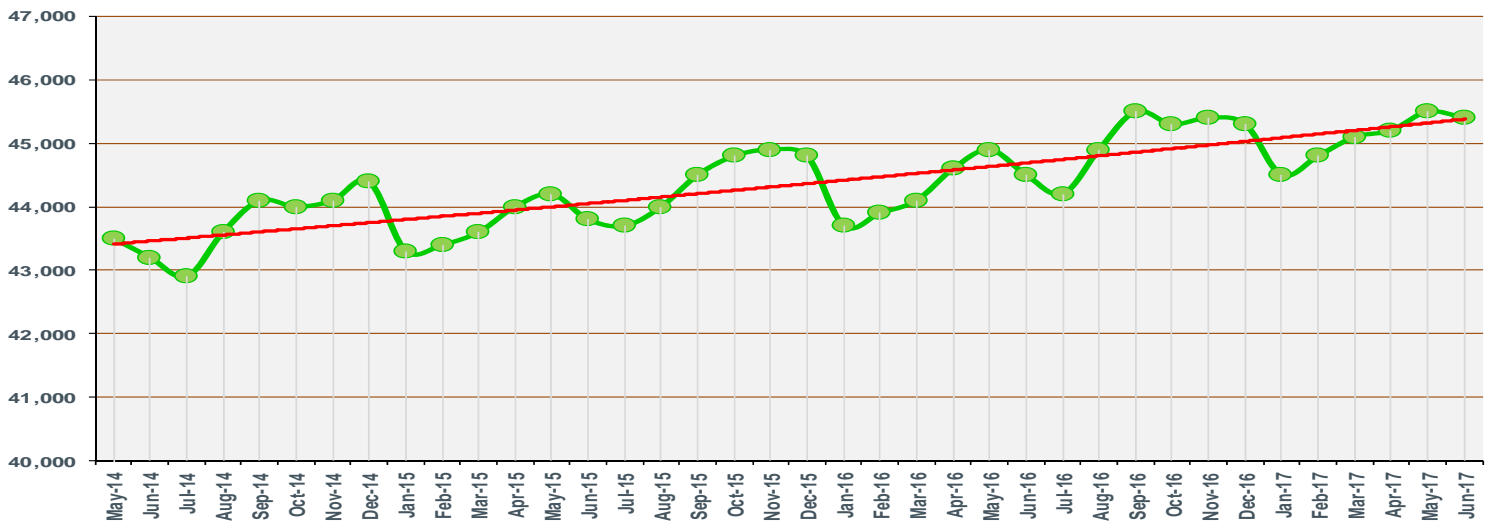
June 2017

The Bureau of Labor Statistics is not currently publishing Seasonally Adjusted for this MSA.

Hammond MSA Nonfarm Employment

— Not Seasonally Adjusted — 3 Year Trend

Not Seasonally Adjusted
 45,400
 Over the Month: -100
 Over the Year: 900



<i>Louisiana - Seasonally Adjusted</i>	Prel.	Rev.		OTM	OTM	OTY	OTY
	June 2017	May 2017	June 2016	Change	% Change	Change	% Change
Total Nonfarm	1,988,800	1,984,400	1,968,100	4,400	0.22%	20,700	1.05%
Total Private	1,665,000	1,660,300	1,642,700	4,700	0.28%	22,300	1.36%
Goods-Producing	325,700	321,400	313,500	4,300	1.34%	12,200	3.89%
Mining and Logging	35,800	35,000	37,900	800	2.29%	-2,100	-5.54%
Mining, Logging, and Construction	191,400	186,600	177,900	4,800	2.57%	13,500	7.59%
Construction	155,600	151,600	140,000	4,000	2.64%	15,600	11.14%
Manufacturing	134,300	134,800	135,600	-500	-0.37%	-1,300	-0.96%
Durable Goods	62,900	62,200	64,600	700	1.13%	-1,700	-2.63%
Nondurable Goods	71,400	72,600	71,000	-1,200	-1.65%	400	0.56%
Service-Providing	1,663,100	1,663,000	1,654,600	100	0.01%	8,500	0.51%
Private Service-Providing	1,339,300	1,338,900	1,329,200	400	0.03%	10,100	0.76%
Trade, Transportation, and Utilities	382,800	383,200	387,800	-400	-0.10%	-5,000	-1.29%
Wholesale Trade	70,900	70,300	70,400	600	0.85%	500	0.71%
Retail Trade	232,300	232,400	235,000	-100	-0.04%	-2,700	-1.15%
Transportation, Warehousing, and Utilities	79,600	80,500	82,400	-900	-1.12%	-2,800	-3.40%
Information	22,800	22,200	22,800	600	2.70%	0	0.00%
Financial Activities	91,700	92,700	92,000	-1,000	-1.08%	-300	-0.33%
Real Estate and Rental and Leasing	30,000	30,600	29,900	-600	-1.96%	100	0.33%
Professional and Business Services	211,300	214,200	209,800	-2,900	-1.35%	1,500	0.71%
Professional, Scientific, and Technical Services	84,400	85,200	86,600	-800	-0.94%	-2,200	-2.54%
Management of Companies and Enterprises	23,100	23,300	23,200	-200	-0.86%	-100	-0.43%
Admin. and Support and Waste Mgmt. and Remediation Serv.	103,800	105,700	100,000	-1,900	-1.80%	3,800	3.80%
Education and Health Services	317,400	317,100	309,600	300	0.09%	7,800	2.52%
Educational Services	48,200	48,400	46,500	-200	-0.41%	1,700	3.66%
Health Care and Social Assistance	269,200	268,700	263,100	500	0.19%	6,100	2.32%
Leisure and Hospitality	236,400	232,700	232,000	3,700	1.59%	4,400	1.90%
Arts, Entertainment, and Recreation	30,600	29,400	30,100	1,200	4.08%	500	1.66%
Accommodation and Food Services	205,800	203,300	201,900	2,500	1.23%	3,900	1.93%
Other Services	76,900	76,800	75,200	100	0.13%	1,700	2.26%
Government	323,800	324,100	325,400	-300	-0.09%	-1,600	-0.49%
Federal Government	31,300	31,200	30,700	100	0.32%	600	1.95%
State Government	85,500	85,300	85,300	200	0.23%	200	0.23%
Local Government	207,000	207,600	209,400	-600	-0.29%	-2,400	-1.15%
<i>MSAs - Seasonally Adjusted</i>	Prel.	Rev.		OTM	OTM	OTY	OTY
	June 2017	May 2017	June 2016	Change	% Change	Change	% Change
Alexandria Total Nonfarm	63,100	62,800	63,500	300	0.48%	-400	-0.63%
Baton Rouge Total Nonfarm	409,100	409,400	406,600	-300	-0.07%	2,500	0.61%
Houma Total Nonfarm	86,100	85,500	88,800	600	0.70%	-2,700	-3.04%
Lafayette Total Nonfarm	199,500	200,300	201,200	-800	-0.40%	-1,700	-0.84%
Lake Charles Total Nonfarm	114,000	112,700	108,500	1,300	1.15%	5,500	5.07%
Monroe Total Nonfarm	80,300	79,300	78,900	1,000	1.26%	1,400	1.77%
New Orleans Total Nonfarm	578,900	577,400	575,400	1,500	0.26%	3,500	0.61%
Shreveport Total Nonfarm	179,400	179,500	181,400	-100	-0.06%	-2,000	-1.10%

<i>Louisiana - Not Seasonally Adjusted</i>	Prel.	Rev.		OTM	OTM	OTY	OTY
	June	May	June	Change	%	Change	%
	2017	2017	2016		Change		Change
Total Nonfarm	1,990,600	1,988,400	1,969,000	2,200	0.11%	21,600	1.10%
Total Private	1,668,900	1,661,800	1,644,100	7,100	0.43%	24,800	1.51%
Goods-Producing	325,600	319,000	314,300	6,600	2.07%	11,300	3.60%
Mining & Logging	35,500	34,800	37,800	700	2.01%	-2,300	-6.08%
Oil & Gas Extraction	7,500	7,600	7,800	-100	-1.32%	-300	-3.85%
Crude Petroleum & Natural Gas Extraction	6,200	6,200	7,100	0	0.00%	-900	-12.68%
Support Activities for Mining	23,800	23,500	26,000	300	1.28%	-2,200	-8.46%
Drilling Oil & Gas Wells	2,800	2,800	3,100	0	0.00%	-300	-9.68%
Mining, Logging, & Construction	190,600	184,500	178,300	6,100	3.31%	12,300	6.90%
Construction	155,100	149,700	140,500	5,400	3.61%	14,600	10.39%
Construction of Buildings	37,100	35,300	27,700	1,800	5.10%	9,400	33.94%
Residential Building Construction	5,900	5,800	5,400	100	1.72%	500	9.26%
Nonresidential Building Construction	31,200	29,500	22,300	1,700	5.76%	8,900	39.91%
Heavy & Civil Engineering Construction	54,800	52,700	46,200	2,100	3.98%	8,600	18.61%
Specialty Trade Contractors	63,200	61,700	66,600	1,500	2.43%	-3,400	-5.11%
Manufacturing	135,000	134,500	136,000	500	0.37%	-1,000	-0.74%
Durable Goods	63,300	62,400	64,800	900	1.44%	-1,500	-2.31%
Transportation Equipment Manufacturing	9,000	9,100	10,100	-100	-1.10%	-1,100	-10.89%
Ship & Boat Building	6,200	6,200	6,200	0	0.00%	0	0.00%
Nondurable Goods	71,700	72,100	71,200	-400	-0.55%	500	0.70%
Food Manufacturing	15,700	15,600	15,900	100	0.64%	-200	-1.26%
Paper Manufacturing	6,900	6,900	7,000	0	0.00%	-100	-1.43%
Petroleum & Coal Products Manufacturing	11,700	11,600	11,800	100	0.86%	-100	-0.85%
Chemical Manufacturing	25,600	25,600	25,500	0	0.00%	100	0.39%
Basic Chemical Manufacturing	13,800	13,700	13,700	100	0.73%	100	0.73%
Service-Providing	1,665,000	1,669,400	1,654,700	-4,400	-0.26%	10,300	0.62%
Private Service-Providing	1,343,300	1,342,800	1,329,800	500	0.04%	13,500	1.02%
Trade, Transportation, & Utilities	383,000	382,700	386,400	300	0.08%	-3,400	-0.88%
Wholesale Trade	70,700	70,100	70,400	600	0.86%	300	0.43%
Merchant Wholesalers, Durable Goods	37,800	37,400	36,200	400	1.07%	1,600	4.42%
Merchant Wholesalers, Nondurable Goods	25,000	24,900	25,600	100	0.40%	-600	-2.34%
Retail Trade	232,100	232,200	234,400	-100	-0.04%	-2,300	-0.98%
Motor Vehicle & Parts Dealers	30,100	30,000	29,900	100	0.33%	200	0.67%
Building Material & Garden Equipment & Supplies Dealers	21,000	21,300	20,400	-300	-1.41%	600	2.94%
Food & Beverage Stores	40,100	39,900	39,900	200	0.50%	200	0.50%
Grocery Stores	35,700	35,300	35,000	400	1.13%	700	2.00%
Health & Personal Care Stores	17,400	17,300	17,100	100	0.58%	300	1.75%
Gasoline Stations	20,300	20,200	20,200	100	0.50%	100	0.50%
Clothing and Clothing Accessories Stores	17,400	17,700	17,700	-300	-1.69%	-300	-1.69%
General Merchandise Stores	56,800	56,700	55,100	100	0.18%	1,700	3.09%
Department Stores	10,000	10,000	10,600	0	0.00%	-600	-5.66%
Transportation, Warehousing, & Utilities	80,200	80,400	81,600	-200	-0.25%	-1,400	-1.72%
Transportation and Warehousing	71,600	71,900	73,200	-300	-0.42%	-1,600	-2.19%
Truck Transportation	16,800	16,800	17,300	0	0.00%	-500	-2.89%
Support Activities for Transportation	18,600	18,600	19,100	0	0.00%	-500	-2.62%

<i>Louisiana - Not Seasonally Adjusted</i>	Prel.	Rev.		OTM	OTM	OTY	OTY
	June	May	June	Change	%	Change	%
	2017	2017	2016		Change		Change
Information	23,500	22,600	23,300	900	3.98%	200	0.86%
Telecommunications	8,800	8,800	9,200	0	0.00%	-400	-4.35%
Financial Activities	92,100	92,500	91,700	-400	-0.43%	400	0.44%
Finance & Insurance	62,300	62,100	61,700	200	0.32%	600	0.97%
Credit Intermediation & Related Activities	30,100	30,000	30,300	100	0.33%	-200	-0.66%
Depository Credit Intermediation	21,000	21,000	21,200	0	0.00%	-200	-0.94%
Insurance Carriers & Related Activities	28,500	28,300	27,500	200	0.71%	1,000	3.64%
Real Estate & Rental & Leasing	29,800	30,400	30,000	-600	-1.97%	-200	-0.67%
Professional & Business Services	210,600	213,600	208,900	-3,000	-1.40%	1,700	0.81%
Professional, Scientific, & Technical Services	84,400	83,900	85,500	500	0.60%	-1,100	-1.29%
Legal Services	18,000	17,600	18,800	400	2.27%	-800	-4.26%
Accounting, Tax Preparation, Bookkeeping & Payroll Services	10,700	11,100	10,900	-400	-3.60%	-200	-1.83%
Architectural, Engineering, & Related Services	23,500	23,100	23,400	400	1.73%	100	0.43%
Management of Companies & Enterprises	23,100	23,200	23,300	-100	-0.43%	-200	-0.86%
Admin. & Support & Waste Mgmt. & Remediation Serv.	103,100	106,500	100,100	-3,400	-3.19%	3,000	3.00%
Administrative & Support Services	94,000	97,200	90,700	-3,200	-3.29%	3,300	3.64%
Employment Services	33,800	33,700	31,500	100	0.30%	2,300	7.30%
Services to Buildings & Dwellings	24,400	24,700	23,300	-300	-1.21%	1,100	4.72%
Education & Health Services	315,300	317,200	307,800	-1,900	-0.60%	7,500	2.44%
Educational Services	46,100	48,700	44,700	-2,600	-5.34%	1,400	3.13%
Colleges, Universities, & Professional Schools	13,700	14,400	13,000	-700	-4.86%	700	5.38%
Health Care & Social Assistance	269,200	268,500	263,100	700	0.26%	6,100	2.32%
Ambulatory Health Care Services	100,800	100,900	98,900	-100	-0.10%	1,900	1.92%
Offices of Physicians	39,800	39,900	38,800	-100	-0.25%	1,000	2.58%
Home Health Care Services	20,800	20,900	21,200	-100	-0.48%	-400	-1.89%
Hospitals	79,200	78,800	77,900	400	0.51%	1,300	1.67%
Nursing & Residential Care Facilities	45,300	44,300	42,400	1,000	2.26%	2,900	6.84%
Nursing Care Facilities	26,900	26,800	26,900	100	0.37%	0	0.00%
Social Assistance	43,900	44,500	43,900	-600	-1.35%	0	0.00%
Leisure & Hospitality	240,900	236,800	236,000	4,100	1.73%	4,900	2.08%
Arts, Entertainment, & Recreation	32,700	30,400	31,700	2,300	7.57%	1,000	3.15%
Amusement, Gambling, & Recreation Industries	26,100	24,300	25,300	1,800	7.41%	800	3.16%
Gambling Industries	10,100	10,000	10,400	100	1.00%	-300	-2.88%
Accommodation & Food Services	208,200	206,400	204,300	1,800	0.87%	3,900	1.91%
Accommodation	34,900	34,500	34,100	400	1.16%	800	2.35%
Food Services & Drinking Places	173,300	171,900	170,200	1,400	0.81%	3,100	1.82%
Other Services	77,900	77,400	75,700	500	0.65%	2,200	2.91%
Repair & Maintenance	20,700	20,400	19,500	300	1.47%	1,200	6.15%
Automotive Repair & Maintenance	11,300	11,400	11,200	-100	-0.88%	100	0.89%
Personal & Laundry Services	17,300	17,300	17,100	0	0.00%	200	1.17%
Government	321,700	326,600	324,900	-4,900	-1.50%	-3,200	-0.98%
Federal Government	31,300	31,200	30,700	100	0.32%	600	1.95%
State Government	80,800	85,500	81,100	-4,700	-5.50%	-300	-0.37%
Local Government	209,600	209,900	213,100	-300	-0.14%	-3,500	-1.64%

LOUISIANA & MSAs NONFARM EMPLOYMENT

12

<i>New Orleans-Metairie MSA - Not Seasonally Adjusted</i>	Prel. June 2017	Rev. May 2017	June 2016	OTM Change	OTM % Change	OTY Change	OTY % Change
Total Nonfarm	578,900	579,600	574,800	-700	-0.12%	4,100	0.71%
Total Private	510,500	510,100	502,100	400	0.08%	8,400	1.67%
Goods-Producing	66,700	66,100	65,000	600	0.91%	1,700	2.62%
Mining & Logging	5,100	5,100	5,600	0	0.00%	-500	-8.93%
Mining, Logging, & Construction	36,300	35,500	34,900	800	2.25%	1,400	4.01%
Construction	31,200	30,400	29,300	800	2.63%	1,900	6.48%
Heavy & Civil Engineering Construction	7,500	7,000	7,000	500	7.14%	500	7.14%
Specialty Trade Contractors	15,300	15,000	16,200	300	2.00%	-900	-5.56%
Manufacturing	30,400	30,600	30,100	-200	-0.65%	300	1.00%
Durable Goods	11,400	11,400	11,500	0	0.00%	-100	-0.87%
Transportation Equipment Manufacturing	2,300	2,300	2,400	0	0.00%	-100	-4.17%
Ship & Boat Building	1,400	1,400	1,300	0	0.00%	100	7.69%
Nondurable Goods	19,000	19,200	18,600	-200	-1.04%	400	2.15%
Chemical Manufacturing	5,300	5,400	5,200	-100	-1.85%	100	1.92%
Service-Providing	512,200	513,500	509,800	-1,300	-0.25%	2,400	0.47%
Private Service-Providing	443,800	444,000	437,100	-200	-0.05%	6,700	1.53%
Trade, Transportation, & Utilities	115,200	115,100	115,700	100	0.09%	-500	-0.43%
Wholesale Trade	22,700	22,900	23,100	-200	-0.87%	-400	-1.73%
Merchant Wholesalers, Durable Goods	10,600	10,500	10,400	100	0.95%	200	1.92%
Merchant Wholesalers, Nondurable Goods	8,600	8,600	8,800	0	0.00%	-200	-2.27%
Retail Trade	64,200	63,800	64,400	400	0.63%	-200	-0.31%
Grocery Stores	10,600	10,400	10,300	200	1.92%	300	2.91%
General Merchandise Stores	14,700	14,700	13,900	0	0.00%	800	5.76%
Transportation, Warehousing, & Utilities	28,300	28,400	28,200	-100	-0.35%	100	0.35%
Information	7,000	6,800	6,800	200	2.94%	200	2.94%
Financial Activities	29,600	29,900	29,800	-300	-1.00%	-200	-0.67%
Finance & Insurance	21,900	21,900	21,200	0	0.00%	700	3.30%
Credit Intermediation & Related Activities	8,100	8,000	8,100	100	1.25%	0	0.00%
Depository Credit Intermediation	5,900	5,900	6,100	0	0.00%	-200	-3.28%
Professional & Business Services	76,700	77,500	75,000	-800	-1.03%	1,700	2.27%
Professional, Scientific, & Technical Services	31,900	30,800	31,700	1,100	3.57%	200	0.63%
Legal Services	8,300	8,000	8,400	300	3.75%	-100	-1.19%
Management of Companies & Enterprises	7,900	7,800	8,000	100	1.28%	-100	-1.25%
Admin. & Support & Waste Mgmt. & Remediation Serv.	36,900	38,900	35,300	-2,000	-5.14%	1,600	4.53%
Administrative & Support Services	34,700	36,700	32,800	-2,000	-5.45%	1,900	5.79%
Employment Services	12,400	12,600	12,400	-200	-1.59%	0	0.00%
Education & Health Services	100,300	101,400	97,900	-1,100	-1.08%	2,400	2.45%
Educational Services	30,000	31,400	29,200	-1,400	-4.46%	800	2.74%
Colleges, Universities, & Professional Schools	12,300	12,700	11,700	-400	-3.15%	600	5.13%
Health Care & Social Assistance	70,300	70,000	68,700	300	0.43%	1,600	2.33%
Ambulatory Health Care Services	27,000	26,900	26,300	100	0.37%	700	2.66%
Hospitals	25,400	25,200	23,300	200	0.79%	2,100	9.01%
Leisure & Hospitality	90,500	88,900	87,900	1,600	1.80%	2,600	2.96%
Arts, Entertainment, & Recreation	12,500	11,700	12,000	800	6.84%	500	4.17%
Amusement, Gambling, & Recreation Industries	6,900	6,400	7,300	500	7.81%	-400	-5.48%
Gambling Industries	1,800	1,700	1,800	100	5.88%	0	0.00%
Accommodation & Food Services	78,000	77,200	75,900	800	1.04%	2,100	2.77%
Accommodation	15,000	14,600	15,100	400	2.74%	-100	-0.66%
Food Services & Drinking Places	63,000	62,600	60,800	400	0.64%	2,200	3.62%
Other Services	24,500	24,400	24,000	100	0.41%	500	2.08%
Government	68,400	69,500	72,700	-1,100	-1.58%	-4,300	-5.91%
Federal Government	12,500	12,400	12,400	100	0.81%	100	0.81%
State Government	10,300	11,800	11,200	-1,500	-12.71%	-900	-8.04%
Local Government	45,600	45,300	49,100	300	0.66%	-3,500	-7.13%
<i>Hammond MSA - Not Seasonally Adjusted</i>	Prel. June 2017	Rev. May 2017	June 2016	OTM Change	OTM % Change	OTY Change	OTY % Change
Total Nonfarm	45,400	45,500	44,500	-100	-0.22%	900	2.02%
Total Private	34,400	34,300	33,600	100	0.29%	800	2.38%
Goods-Producing	3,600	3,600	3,500	0	0.00%	100	2.86%
Service-Providing	41,800	41,900	41,000	-100	-0.24%	800	1.95%
Private Service-Providing	30,800	30,700	30,100	100	0.33%	700	2.33%
Government	11,000	11,200	10,900	-200	-1.79%	100	0.92%

<i>Baton Rouge MSA - Not Seasonally Adjusted</i>	Prel.	Rev.		OTM	OTM	OTY	OTY
	June 2017	May 2017	June 2016	Change	% Change	Change	% Change
Total Nonfarm	409,400	410,200	404,900	-800	-0.20%	4,500	1.11%
Total Private	338,400	337,600	332,800	800	0.24%	5,600	1.68%
Goods-Producing	82,800	83,700	81,800	-900	-1.08%	1,000	1.22%
Mining & Logging	1,000	1,000	1,200	0	0.00%	-200	-16.67%
Mining, Logging, & Construction	53,500	54,500	52,800	-1,000	-1.83%	700	1.33%
Construction	52,500	53,500	51,600	-1,000	-1.87%	900	1.74%
Construction of Buildings	9,800	9,900	8,000	-100	-1.01%	1,800	22.50%
Nonresidential Building Construction	8,400	8,400	6,800	0	0.00%	1,600	23.53%
Heavy & Civil Engineering Construction	19,900	20,600	19,400	-700	-3.40%	500	2.58%
Specialty Trade Contractors	22,800	23,000	24,200	-200	-0.87%	-1,400	-5.79%
Manufacturing	29,300	29,200	29,000	100	0.34%	300	1.03%
Nondurable Goods	18,500	18,400	18,500	100	0.54%	0	0.00%
Chemical Manufacturing	10,900	10,900	10,800	0	0.00%	100	0.93%
Basic Chemical Manufacturing	6,000	6,000	6,100	0	0.00%	-100	-1.64%
Service-Providing	326,600	326,500	323,100	100	0.03%	3,500	1.08%
Private Service-Providing	255,600	253,900	251,000	1,700	0.67%	4,600	1.83%
Trade, Transportation, & Utilities	68,700	68,300	69,600	400	0.59%	-900	-1.29%
Wholesale Trade	13,300	13,300	13,300	0	0.00%	0	0.00%
Retail Trade	41,800	41,200	42,900	600	1.46%	-1,100	-2.56%
Grocery Stores	6,800	6,600	6,600	200	3.03%	200	3.03%
General Merchandise Stores	9,700	9,700	9,700	0	0.00%	0	0.00%
Department Stores	1,400	1,400	1,500	0	0.00%	-100	-6.67%
Transportation, Warehousing, & Utilities	13,600	13,800	13,400	-200	-1.45%	200	1.49%
Information	5,500	5,300	6,200	200	3.77%	-700	-11.29%
Financial Activities	19,100	19,100	18,800	0	0.00%	300	1.60%
Finance & Insurance	12,600	12,700	12,600	-100	-0.79%	0	0.00%
Depository Credit Intermediation	3,700	3,700	3,700	0	0.00%	0	0.00%
Professional & Business Services	48,500	49,000	47,200	-500	-1.02%	1,300	2.75%
Professional, Scientific, & Technical Services	19,900	20,100	20,300	-200	-1.00%	-400	-1.97%
Admin. & Support & Waste Mgmt. & Remediation Serv.	21,900	22,500	21,200	-600	-2.67%	700	3.30%
Education & Health Services	55,100	54,200	52,100	900	1.66%	3,000	5.76%
Health Care & Social Assistance	47,700	47,100	45,500	600	1.27%	2,200	4.84%
Ambulatory Health Care Services	19,900	19,900	20,000	0	0.00%	-100	-0.50%
Hospitals	12,000	12,000	12,000	0	0.00%	0	0.00%
Leisure & Hospitality	41,800	41,200	40,200	600	1.46%	1,600	3.98%
Accommodation & Food Services	34,200	34,400	33,800	-200	-0.58%	400	1.18%
Food Services & Drinking Places	30,800	30,700	31,000	100	0.33%	-200	-0.65%
Other Services	16,900	16,800	16,900	100	0.60%	0	0.00%
Government	71,000	72,600	72,100	-1,600	-2.20%	-1,100	-1.53%
Federal Government	2,800	2,900	2,900	-100	-3.45%	-100	-3.45%
State Government	35,700	36,800	36,600	-1,100	-2.99%	-900	-2.46%
Local Government	32,500	32,900	32,600	-400	-1.22%	-100	-0.31%
<i>Houma-Thibodaux MSA - Not Seasonally Adjusted</i>	Prel. June 2017	Rev. May 2017	June 2016	OTM Change	OTM % Change	OTY Change	OTY % Change
Total Nonfarm	86,000	85,700	88,800	300	0.35%	-2,800	-3.15%
Total Private	73,900	73,000	76,500	900	1.23%	-2,600	-3.40%
Goods-Producing	17,200	16,800	17,600	400	2.38%	-400	-2.27%
Mining & Logging	5,400	5,300	5,800	100	1.89%	-400	-6.90%
Support Activities for Mining	4,600	4,500	4,900	100	2.22%	-300	-6.12%
Mining, Logging, & Construction	10,200	9,900	10,400	300	3.03%	-200	-1.92%
Construction	4,800	4,600	4,600	200	4.35%	200	4.35%
Service-Providing	68,800	68,900	71,200	-100	-0.15%	-2,400	-3.37%
Private Service-Providing	56,700	56,200	58,900	500	0.89%	-2,200	-3.74%
Trade, Transportation, & Utilities	21,100	21,200	24,300	-100	-0.47%	-3,200	-13.17%
Retail Trade	11,100	11,100	11,000	0	0.00%	100	0.91%
Support Activities for Transportation	4,300	4,300	5,000	0	0.00%	-700	-14.00%
Administrative & Support Services	3,300	3,400	3,300	-100	-2.94%	0	0.00%
Employment Services	1,800	1,700	1,600	100	5.88%	200	12.50%
Leisure & Hospitality	8,200	8,100	8,300	100	1.23%	-100	-1.20%
Government	12,100	12,700	12,300	-600	-4.72%	-200	-1.63%
Federal Government	400	400	400	0	0.00%	0	0.00%
State Government	1,500	2,100	1,700	-600	-28.57%	-200	-11.76%
Local Government	10,200	10,200	10,200	0	0.00%	0	0.00%

LOUISIANA & MSAs NONFARM EMPLOYMENT

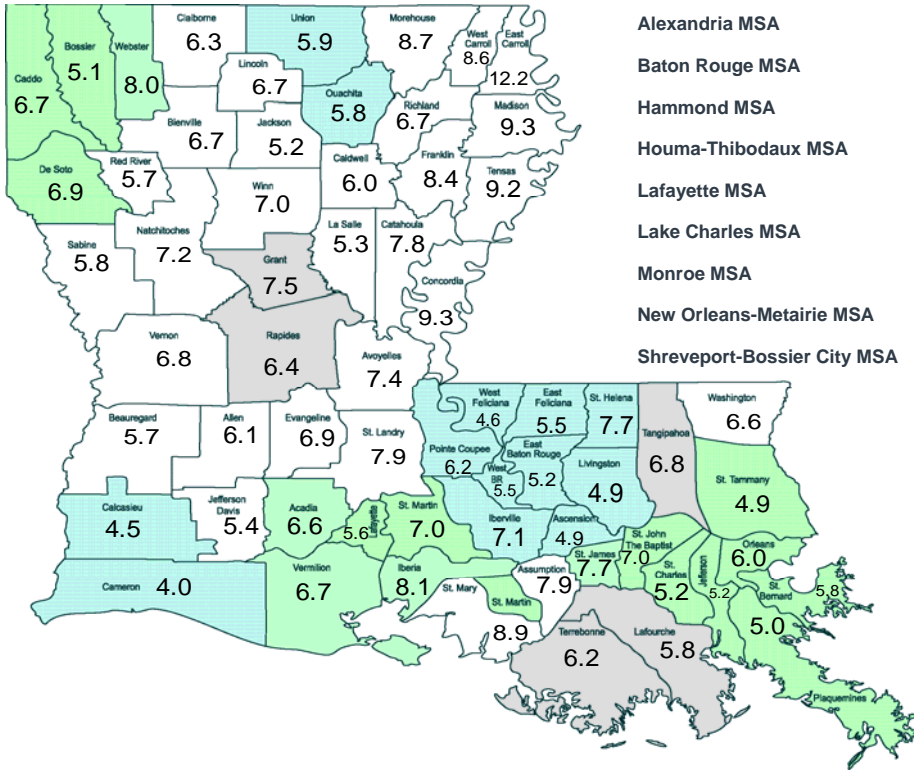
14

<i>Shreveport-Bossier City MSA - Not Seasonally Adjusted</i>	Prel.	Rev.		OTM	OTM	OTY	OTY
	June 2017	May 2017	June 2016	Change	% Change	Change	% Change
Total Nonfarm	180,100	179,800	182,000	300	0.17%	-1,900	-1.04%
Total Private	151,000	150,200	151,600	800	0.53%	-600	-0.40%
Goods-Producing	22,100	21,900	22,900	200	0.91%	-800	-3.49%
Mining & Logging	3,400	3,400	3,800	0	0.00%	-400	-10.53%
Mining, Logging, & Construction	11,900	11,600	12,500	300	2.59%	-600	-4.80%
Construction	8,500	8,200	8,700	300	3.66%	-200	-2.30%
Manufacturing	10,200	10,300	10,400	-100	-0.97%	-200	-1.92%
Service-Providing	158,000	157,900	159,100	100	0.06%	-1,100	-0.69%
Private Service-Providing	128,900	128,300	128,700	600	0.47%	200	0.16%
Trade, Transportation, & Utilities	37,900	37,700	37,900	200	0.53%	0	0.00%
Wholesale Trade	7,700	7,600	7,800	100	1.32%	-100	-1.28%
Retail Trade	24,100	24,000	23,700	100	0.42%	400	1.69%
General Merchandise Stores	6,000	6,000	5,900	0	0.00%	100	1.69%
Transportation, Warehousing, & Utilities	6,100	6,100	6,400	0	0.00%	-300	-4.69%
Information	2,100	2,000	2,000	100	5.00%	100	5.00%
Financial Activities	7,400	7,500	7,500	-100	-1.33%	-100	-1.33%
Professional & Business Services	16,500	16,200	16,900	300	1.85%	-400	-2.37%
Admin. & Support & Waste Mgmt. & Remediation Serv.	10,100	10,200	10,400	-100	-0.98%	-300	-2.88%
Education & Health Services	33,600	33,900	33,100	-300	-0.88%	500	1.51%
Health Care & Social Assistance	31,600	31,600	31,000	0	0.00%	600	1.94%
Hospitals	13,400	13,400	13,300	0	0.00%	100	0.75%
Leisure & Hospitality	24,600	24,300	24,600	300	1.23%	0	0.00%
Arts, Entertainment, & Recreation	5,100	4,800	5,000	300	6.25%	100	2.00%
Amusement, Gambling, & Recreation Industries	4,800	4,600	4,800	200	4.35%	0	0.00%
Gambling Industries	3,400	3,300	3,500	100	3.03%	-100	-2.86%
Accommodation & Food Services	19,500	19,500	19,600	0	0.00%	-100	-0.51%
Food Services & Drinking Places	15,800	15,700	15,800	100	0.64%	0	0.00%
Other Services	6,800	6,700	6,700	100	1.49%	100	1.49%
Government	29,100	29,600	30,400	-500	-1.69%	-1,300	-4.28%
Federal Government	4,800	4,800	4,900	0	0.00%	-100	-2.04%
State Government	4,900	5,200	5,400	-300	-5.77%	-500	-9.26%
Local Government	19,400	19,600	20,100	-200	-1.02%	-700	-3.48%
<i>Lafayette MSA - Not Seasonally Adjusted</i>	Prel. June 2017	Rev. May 2017	June 2016	OTM Change	OTM % Change	OTY Change	OTY % Change
Total Nonfarm	199,800	200,700	200,900	-900	-0.45%	-1,100	-0.55%
Total Private	173,800	173,800	174,900	0	0.00%	-1,100	-0.63%
Goods-Producing	39,100	39,000	39,800	100	0.26%	-700	-1.76%
Mining & Logging	13,700	13,900	14,500	-200	-1.44%	-800	-5.52%
Support Activities for Mining	11,100	11,100	12,300	0	0.00%	-1,200	-9.76%
Mining, Logging, & Construction	23,600	23,700	24,500	-100	-0.42%	-900	-3.67%
Construction	9,900	9,800	10,000	100	1.02%	-100	-1.00%
Manufacturing	15,500	15,300	15,300	200	1.31%	200	1.31%
Service-Providing	160,700	161,700	161,100	-1,000	-0.62%	-400	-0.25%
Private Service-Providing	134,700	134,800	135,100	-100	-0.07%	-400	-0.30%
Trade, Transportation, & Utilities	41,700	41,900	42,000	-200	-0.48%	-300	-0.71%
Wholesale Trade	9,000	9,000	9,100	0	0.00%	-100	-1.10%
Retail Trade	27,800	28,000	27,800	-200	-0.71%	0	0.00%
General Merchandise Stores	6,000	6,000	5,600	0	0.00%	400	7.14%
Transportation, Warehousing, & Utilities	4,900	4,900	5,100	0	0.00%	-200	-3.92%
Information	2,600	2,500	2,600	100	4.00%	0	0.00%
Financial Activities	10,400	10,400	10,400	0	0.00%	0	0.00%
Professional & Business Services	19,700	19,800	20,300	-100	-0.51%	-600	-2.96%
Professional, Scientific, & Technical Services	8,700	8,700	9,100	0	0.00%	-400	-4.40%
Education & Health Services	30,200	30,300	30,000	-100	-0.33%	200	0.67%
Health Care & Social Assistance	29,100	29,100	29,000	0	0.00%	100	0.34%
Hospitals	7,500	7,500	8,000	0	0.00%	-500	-6.25%
Leisure & Hospitality	22,800	22,700	22,600	100	0.44%	200	0.88%
Accommodation & Food Services	20,000	20,000	19,700	0	0.00%	300	1.52%
Food Services & Drinking Places	18,300	18,400	18,000	-100	-0.54%	300	1.67%
Other Services	7,300	7,200	7,200	100	1.39%	100	1.39%
Government	26,000	26,900	26,000	-900	-3.35%	0	0.00%
Federal Government	1,400	1,400	1,400	0	0.00%	0	0.00%
State Government	4,800	5,700	4,800	-900	-15.79%	0	0.00%
Local Government	19,800	19,800	19,800	0	0.00%	0	0.00%

<i>Lake Charles MSA - Not Seasonally Adjusted</i>	Prel.	Rev.		OTM	OTM	OTY	OTY
	June	May	June	Change	%	Change	%
	2017	2017	2016		Change		Change
Total Nonfarm	114,300	112,900	108,700	1,400	1.24%	5,600	5.15%
Total Private	98,900	97,600	93,300	1,300	1.33%	5,600	6.00%
Goods-Producing	35,300	34,200	30,800	1,100	3.22%	4,500	14.61%
Mining & Logging	500	500	500	0	0.00%	0	0.00%
Mining, Logging, & Construction	24,900	23,800	20,200	1,100	4.62%	4,700	23.27%
Construction	24,400	23,300	19,700	1,100	4.72%	4,700	23.86%
Heavy & Civil Engineering Construction	9,100	8,800	9,000	300	3.41%	100	1.11%
Manufacturing	10,400	10,400	10,600	0	0.00%	-200	-1.89%
Nondurable Goods	7,600	7,600	7,400	0	0.00%	200	2.70%
Service-Providing	79,000	78,700	77,900	300	0.38%	1,100	1.41%
Private Service-Providing	63,600	63,400	62,500	200	0.32%	1,100	1.76%
Trade, Transportation, & Utilities	18,300	18,300	17,800	0	0.00%	500	2.81%
Retail Trade	11,300	11,300	11,200	0	0.00%	100	0.89%
Professional & Business Services	9,400	9,500	9,300	-100	-1.05%	100	1.08%
Leisure & Hospitality	15,700	15,500	15,500	200	1.29%	200	1.29%
Accommodation & Food Services	14,100	14,000	14,100	100	0.71%	0	0.00%
Government	15,400	15,300	15,400	100	0.65%	0	0.00%
Federal Government	600	600	600	0	0.00%	0	0.00%
State Government	2,600	2,800	2,700	-200	-7.14%	-100	-3.70%
Local Government	12,200	11,900	12,100	300	2.52%	100	0.83%
<i>Monroe MSA - Not Seasonally Adjusted</i>	Prel.	Rev.		OTM	OTM	OTY	OTY
	June	May	June	Change	%	Change	%
	2017	2017	2016		Change		Change
Total Nonfarm	80,200	79,800	79,000	400	0.50%	1,200	1.52%
Total Private	69,100	68,400	67,500	700	1.02%	1,600	2.37%
Goods-Producing	11,100	10,800	10,600	300	2.78%	500	4.72%
Manufacturing	6,500	6,500	6,500	0	0.00%	0	0.00%
Nondurable Goods	4,700	4,700	4,600	0	0.00%	100	2.17%
Service-Providing	69,100	69,000	68,400	100	0.14%	700	1.02%
Private Service-Providing	58,000	57,600	56,900	400	0.69%	1,100	1.93%
Trade, Transportation, & Utilities	15,100	14,800	14,700	300	2.03%	400	2.72%
Retail Trade	10,600	10,400	10,300	200	1.92%	300	2.91%
Professional & Business Services	8,800	8,900	8,700	-100	-1.12%	100	1.15%
Education & Health Services	15,800	16,000	15,700	-200	-1.25%	100	0.64%
Hospitals	3,700	3,700	3,800	0	0.00%	-100	-2.63%
Leisure & Hospitality	8,300	8,200	8,000	100	1.22%	300	3.75%
Government	11,100	11,400	11,500	-300	-2.63%	-400	-3.48%
Federal Government	500	500	500	0	0.00%	0	0.00%
State Government	1,900	2,300	2,300	-400	-17.39%	-400	-17.39%
Local Government	8,700	8,600	8,700	100	1.16%	0	0.00%
<i>Alexandria MSA - Not Seasonally Adjusted</i>	Prel.	Rev.		OTM	OTM	OTY	OTY
	June	May	June	Change	%	Change	%
	2017	2017	2016		Change		Change
Total Nonfarm	63,200	62,900	63,700	300	0.48%	-500	-0.78%
Total Private	50,000	49,700	50,300	300	0.60%	-300	-0.60%
Goods-Producing	8,400	8,300	8,700	100	1.20%	-300	-3.45%
Service-Providing	54,800	54,600	55,000	200	0.37%	-200	-0.36%
Private Service-Providing	41,600	41,400	41,600	200	0.48%	0	0.00%
Trade, Transportation, & Utilities	11,000	11,100	11,500	-100	-0.90%	-500	-4.35%
Retail Trade	7,800	7,800	8,000	0	0.00%	-200	-2.50%
Hospitals	4,000	4,000	4,000	0	0.00%	0	0.00%
Government	13,200	13,200	13,400	0	0.00%	-200	-1.49%
Federal Government	2,800	2,800	2,900	0	0.00%	-100	-3.45%
State Government	3,400	3,400	3,500	0	0.00%	-100	-2.86%
Local Government	7,000	7,000	7,000	0	0.00%	0	0.00%

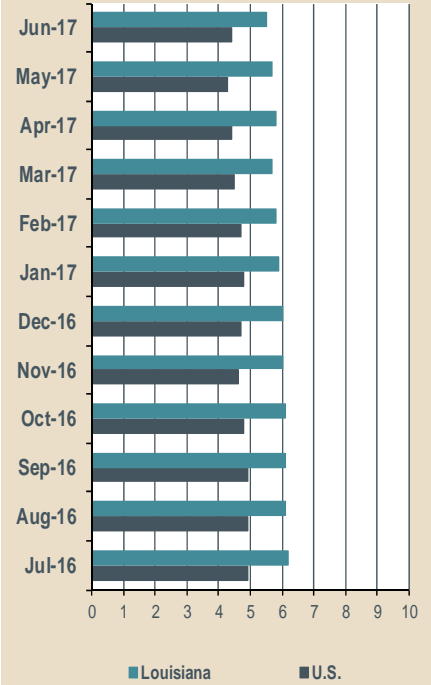
Louisiana Unemployment Rates (Not Seasonally Adjusted)

June 2017



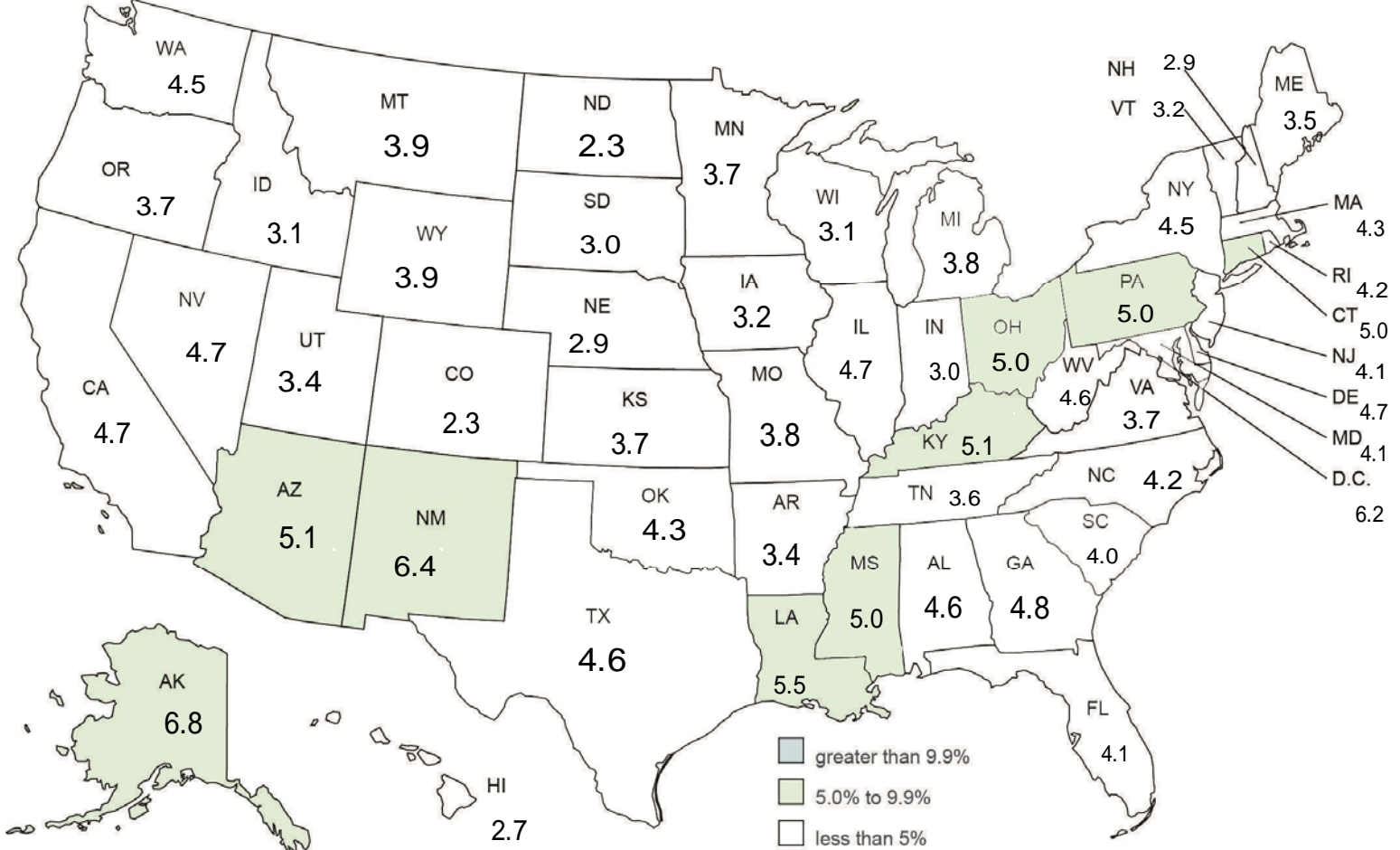
Statewide	5.9 %
Alexandria MSA	6.5 %
Baton Rouge MSA	5.2 %
Hammond MSA	6.8 %
Houma-Thibodaux MSA	6.0 %
Lafayette MSA	6.3 %
Lake Charles MSA	4.5 %
Monroe MSA	5.8 %
New Orleans-Metairie MSA	5.5 %
Shreveport-Bossier City MSA	6.3 %

United States - Louisiana Unemployment Rates (Seasonally Adjusted)



United States Unemployment Rates (Seasonally Adjusted)

June 2017



CIVILIAN LABOR FORCE (Not Seasonally Adjusted)

Area	June 2017			May 2017			June 2016		
	Employed	Unemployed	Rate	Employed	Unemployed	Rate	Employed	Unemployed	Rate
UNITED STATES	154,086,000	7,250,000	4.5	153,407,000	6,572,000	4.1	151,990,000	8,144,000	5.1
LOUISIANA	1,998,184	124,864	5.9	1,988,014	115,878	5.5	2,005,686	149,501	6.9
ALEXANDRIA MSA	61,660	4,300	6.5	61,153	4,022	6.2	62,465	4,795	7.1
Grant	7,811	633	7.5	7,741	546	6.6	7,894	695	8.1
Rapides	53,849	3,667	6.4	53,412	3,476	6.1	54,571	4,100	7.0
BATON ROUGE MSA	398,735	21,857	5.2	397,861	19,760	4.7	398,307	25,574	6.0
Ascension	58,558	3,009	4.9	58,455	2,820	4.6	58,531	3,497	5.6
East Baton Rouge	222,374	12,078	5.2	222,024	10,861	4.7	222,296	14,229	6.0
East Feliciana	7,782	454	5.5	7,755	389	4.8	7,755	540	6.5
Iberville	13,451	1,029	7.1	13,382	926	6.5	13,415	1,134	7.8
Livingston	65,068	3,319	4.9	64,895	3,028	4.5	64,930	3,860	5.6
Pointe Coupee	9,666	644	6.2	9,578	578	5.7	9,580	749	7.3
St. Helena	4,156	347	7.7	4,136	297	6.7	4,140	392	8.6
West Baton Rouge	12,501	729	5.5	12,486	633	4.8	12,505	851	6.4
West Feliciana	5,179	248	4.6	5,150	228	4.2	5,155	322	5.9
HAMMOND MSA	51,240	3,739	6.8	50,983	3,335	6.1	50,730	4,314	7.8
Tangipahoa	51,240	3,739	6.8	50,983	3,335	6.1	50,730	4,314	7.8
HOUMA-THIBODAUX MSA	84,366	5,426	6.0	83,367	5,316	6.0	87,090	7,079	7.5
Lafourche	39,572	2,446	5.8	39,139	2,343	5.6	40,859	3,156	7.2
Terbonne	44,794	2,980	6.2	44,228	2,973	6.3	46,231	3,923	7.8
LAFAYETTE MSA	199,838	13,516	6.3	199,584	13,063	6.1	201,876	17,766	8.1
Acadia	22,764	1,607	6.6	22,636	1,539	6.4	22,926	2,104	8.4
Iberia	27,712	2,437	8.1	27,604	2,422	8.1	27,887	3,287	10.5
Lafayette	105,649	6,271	5.6	105,737	6,016	5.4	106,948	8,164	7.1
St. Martin	20,926	1,563	7.0	20,884	1,508	6.7	21,190	2,080	8.9
Vermilion	22,787	1,638	6.7	22,723	1,578	6.5	22,925	2,131	8.5
LAKE CHARLES MSA	105,821	5,013	4.5	104,281	4,697	4.3	102,055	5,785	5.4
Calcasieu	102,011	4,856	4.5	100,531	4,553	4.3	98,384	5,587	5.4
Cameron	3,810	157	4.0	3,750	144	3.7	3,671	198	5.1
MONROE MSA	76,975	4,771	5.8	76,292	4,596	5.7	76,584	5,710	6.9
Ouachita	68,052	4,212	5.8	67,505	4,040	5.6	67,761	5,026	6.9
Union	8,923	559	5.9	8,787	556	6.0	8,823	684	7.2
NEW ORLEANS-METARIE MSA	567,317	33,024	5.5	565,477	30,000	5.0	567,669	38,040	6.3
Jefferson	206,169	11,279	5.2	205,553	10,420	4.8	206,443	13,119	6.0
Orleans	169,842	10,894	6.0	169,343	9,550	5.3	169,949	12,196	6.7
Plaquemines	9,892	524	5.0	9,790	484	4.7	9,839	597	5.7
St. Bernard	18,525	1,141	5.8	18,430	1,058	5.4	18,478	1,332	6.7
St. Charles	24,069	1,310	5.2	23,993	1,215	4.8	24,103	1,583	6.2
St. James	8,954	748	7.7	8,910	666	7.0	8,967	844	8.6
St. John the Baptist	18,738	1,400	7.0	18,687	1,318	6.6	18,789	1,591	7.8
St. Tammany	111,128	5,728	4.9	110,771	5,289	4.6	111,101	6,778	5.7
SHREVEPORT-BOSSIER CITY MSA	176,964	11,972	6.3	175,895	11,247	6.0	180,187	14,145	7.3
Bossier	53,471	2,873	5.1	53,139	2,721	4.9	54,443	3,474	6.0
Caddo	99,678	7,160	6.7	99,114	6,673	6.3	101,514	8,252	7.5
De Soto	9,970	737	6.9	9,887	712	6.7	10,135	909	8.2
Webster	13,845	1,202	8.0	13,755	1,141	7.7	14,095	1,510	9.7
NON-MSA PARISHES									
Allen	8,440	546	6.1	8,398	480	5.4	8,484	666	7.3
Assumption	8,487	732	7.9	8,370	709	7.8	8,514	886	9.4
Avoyelles	14,615	1,173	7.4	14,464	1,007	6.5	14,995	1,304	8.0
Beauregard (DeRidder MC)	14,108	856	5.7	14,123	868	5.8	14,278	1,053	6.9
Bienville	5,321	382	6.7	5,236	365	6.5	5,333	499	8.6
Caldwell	3,729	240	6.0	3,678	223	5.7	3,772	343	8.3
Catahoula	3,324	281	7.8	3,255	252	7.2	3,274	372	10.2
Claiborne	5,442	366	6.3	5,420	343	6.0	5,655	458	7.5
Concordia (Natchez, MS-LAMC)	6,769	690	9.3	6,688	621	8.5	6,814	696	9.3
East Carroll	1,918	267	12.2	1,890	268	12.4	1,932	289	13.0
Evangeline	11,786	879	6.9	11,703	791	6.3	11,928	1,139	8.7
Franklin	6,904	634	8.4	6,772	580	7.9	6,900	758	9.9
Jackson	6,684	369	5.2	6,601	345	5.0	6,840	470	6.4
Jefferson Davis	13,000	738	5.4	12,910	705	5.2	12,868	939	6.8
La Salle	5,808	328	5.3	5,760	302	5.0	5,900	486	7.6
Lincoln (Ruston MC)	19,099	1,382	6.7	19,285	1,175	5.7	19,305	1,723	8.2
Madison	3,646	374	9.3	3,562	323	8.3	3,607	404	10.1
Morehouse (Bastrop MC)	9,726	922	8.7	9,696	944	8.9	9,714	1,168	10.7
Natchitoches (Natchitoches MC)	15,199	1,182	7.2	15,277	1,038	6.4	15,038	1,385	8.4
Red River	3,725	227	5.7	3,675	208	5.4	3,661	254	6.5
Richland	8,017	572	6.7	7,897	530	6.3	7,977	708	8.2
Sabine	8,790	545	5.8	8,674	511	5.6	8,738	740	7.8
St. Landry (Opelousas MC)	30,088	2,566	7.9	29,789	2,318	7.2	30,544	3,148	9.3
St. Mary (Morgan City MC)	18,744	1,842	8.9	18,547	1,842	9.0	20,212	2,374	10.5
Tensas	1,557	158	9.2	1,496	156	9.4	1,557	195	11.1
Vernon (Fort Polk South MC)	15,658	1,141	6.8	15,446	1,179	7.1	16,172	1,478	8.4
Washington (Bogalusa MC)	16,041	1,134	6.6	16,080	1,019	6.0	15,889	1,422	8.2
West Carroll	3,816	361	8.6	3,685	383	9.4	3,870	502	11.5
Winn	4,830	364	7.0	4,743	359	7.0	4,950	441	8.2

In addition to nine (9) Metropolitan Statistical Areas (MSAs) in Louisiana, there are nine (9) Micropolitan Statistical Areas (MCs). Civilian Labor Force can be derived by adding employed and unemployed. For related information or data, please visit <http://www.bls.gov/au/>.

LOUISIANA - PRIVATE EMPLOYMENT (Not Seasonally Adjusted)

	Average Weekly Earnings (\$)			Average Weekly Hours			Average Hourly Earnings (\$)		
	JUNE	MAY	JUNE	JUNE	MAY	JUNE	JUNE	MAY	JUNE
	2017	2017	2016	2017	2017	2016	2017	2017	2016
Total Private	806.06	807.12	790.94	35.4	35.4	35.2	22.77	22.80	22.47
Goods-Producing	1,106.81	1,129.65	1,098.17	42.1	42.5	41.3	26.29	26.58	26.59
Private Service-Providing	733.80	730.28	719.26	33.8	33.7	33.8	21.71	21.67	21.28
Construction	1,063.95	1,098.20	1,060.33	41.0	41.9	41.5	25.95	26.21	25.55
Manufacturing	1,071.87	1,087.86	1,039.90	42.1	42.1	40.4	25.46	25.84	25.74
Trade, Transportation, and Utilities	709.37	707.62	724.71	35.1	35.1	35.7	20.21	20.16	20.30
Financial Activities	918.92	937.38	921.31	35.7	35.2	37.3	25.74	26.63	24.70
Professional and Business Services	998.58	958.67	940.91	37.4	37.0	37.0	26.70	25.91	25.43
Education and Health Services	758.44	756.96	735.83	33.5	33.2	33.8	22.64	22.80	21.77
Leisure and Hospitality	352.45	362.07	354.03	26.6	27.0	26.8	13.25	13.41	13.21

METROPOLITAN STATISTICAL AREAS (MSAs) - PRIVATE EMPLOYMENT
(Not Seasonally Adjusted)

	Average Weekly Earnings (\$)			Average Weekly Hours			Average Hourly Earnings (\$)		
	JUNE	MAY	JUNE	JUNE	MAY	JUNE	JUNE	MAY	JUNE
	2017	2017	2016	2017	2017	2016	2017	2017	2016
Alexandria	634.05	628.55	630.03	32.7	32.5	33.8	19.39	19.34	18.64
Baton Rouge	872.65	878.46	857.60	36.3	36.3	35.6	24.04	24.20	24.09
Hammond	595.66	598.22	530.09	31.6	30.9	31.2	18.85	19.36	16.99
Houma	909.32	890.63	861.09	37.7	37.5	37.9	24.12	23.75	22.72
Lafayette	829.49	828.41	854.83	35.8	35.8	36.5	23.17	23.14	23.42
Lake Charles	791.16	851.60	886.85	34.7	36.1	37.2	22.80	23.59	23.84
Monroe	696.24	698.40	693.33	36.0	36.0	36.3	19.34	19.40	19.10
New Orleans	858.53	855.10	845.50	34.3	34.3	34.3	25.03	24.93	24.65
Shreveport	652.18	647.07	652.88	33.6	33.2	34.2	19.41	19.49	19.09

AVERAGE HOURS AND EARNINGS FOR PRODUCTION WORKERS IN MANUFACTURING
AND SELECTED NONMANUFACTURING INDUSTRIES (Not Seasonally Adjusted)

	Production Workers	Average Weekly Earnings (\$)			Average Weekly Hours			Average Hourly Earnings (\$)			
		JUNE	JUNE	MAY	JUNE	JUNE	MAY	JUNE	JUNE	MAY	JUNE
		2017	2017	2017	2016	2017	2017	2016	2017	2017	2016
Mining & Logging	26,300	1,385.75	1,422.48	1,494.98	47.9	48.4	44.8	28.93	29.39	33.37	
Manufacturing	105,700	909.51	911.66	910.20	42.6	41.8	41.0	21.35	21.81	22.20	
Durable Goods	49,500	962.93	1,014.09	873.74	43.2	43.9	39.5	22.29	23.10	22.12	
Nondurable Goods	56,200	860.58	826.86	941.60	42.0	40.1	42.3	20.49	20.62	22.26	

WORKFORCE DEVELOPMENT AREA		PERIOD	LABORFORCE	EMP	UNEMP	URATE
St. Tammany, Plaquemines, St. Bernard	WDA 10	May 2017	145,822	138,991	6,831	4.7
		June 2017	146,938	139,545	7,393	5.0
Jefferson	WDA 11	May 2017	215,973	205,553	10,420	4.8
		June 2017	217,448	206,169	11,279	5.2
Orleans	WDA 12	May 2017	178,893	169,343	9,550	5.3
		June 2017	180,736	169,842	10,894	6.0
St. James, St. John the Baptist, St. Charles	WDA 14	May 2017	54,789	51,590	3,199	5.8
		June 2017	55,219	51,761	3,458	6.3
Pointe Coupee, West Feliciana, East Feliciana, St. Helena, Tangipahoa, Washington, Livingston, Ascension, Iberville, West Baton Rouge	WDA 20	May 2017	256,153	242,900	13,253	5.2
		June 2017	258,294	243,642	14,652	5.7
East Baton Rouge	WDA 21	May 2017	232,885	222,024	10,861	4.7
		June 2017	234,452	222,374	12,078	5.2
Assumption, Lafourche, Terrebonne	WDA 31	May 2017	97,762	91,737	6,025	6.2
		June 2017	99,011	92,853	6,158	6.2
Lafayette, Vermilion, Iberia, St. Mary, St. Martin, St. Landry, Evangeline, Acadia	WDA 40	May 2017	277,637	259,623	18,014	6.5
		June 2017	279,259	260,456	18,803	6.7
Vernon, Allen, Beauregard, Calcasieu, Jefferson Davis, Cameron	WDA 51	May 2017	163,087	155,158	7,929	4.9
		June 2017	165,321	157,027	8,294	5.0
Avoyelles, Catahoula, Concordia, LaSalle, Grant, Winn	WDA 60	May 2017	45,738	42,651	3,087	6.7
		June 2017	46,626	43,157	3,469	7.4
Rapides	WDA 61	May 2017	56,888	53,412	3,476	6.1
		June 2017	57,516	53,849	3,667	6.4
DeSoto, Sabine, Natchitoches, Red River, Bienville, Lincoln, Claiborne, Webster	WDA 70	May 2017	86,702	81,209	5,493	6.3
		June 2017	87,414	81,391	6,023	6.9
Caddo, Bossier	WDA 71	May 2017	161,647	152,253	9,394	5.8
		June 2017	163,182	153,149	10,033	6.1
Ouachita	WDA 81	May 2017	71,545	67,505	4,040	5.6
		June 2017	72,264	68,052	4,212	5.8
Union, East Carroll, West Carroll, Morehouse, Franklin, Richland, Caldwell, Jackson, Madison, Tensas	WDA 83	May 2017	58,372	54,064	4,308	7.4
		June 2017	59,376	54,920	4,456	7.5

*WDA data are seasonally adjusted.

Labor Market Questions and Answers!

When will the new projections data be included in the website?

The new projections data for the short-term 2014-2017 and long-term 2014-2024 are now on the website.

http://www.laworks.net/LaborMarketInfo/LMI_employmentprojections.asp

This web page shows industry and occupational information sorted by education and all occupations. The data includes occupations that are the fastest growing and the ones that will add the most jobs.

Glossary & Technical Notes

Average Hourly Earnings/Average Weekly Earnings/ Average Weekly Hours (CES/BLS) - average total money earnings, in the survey week (i.e., the week that includes the twelfth of the month), of production workers plus nonsupervisory workers not in production, including overtime, paid vacation and sick leave.

Civilian Labor Force - that portion of the population, age sixteen or older, which is employed or unemployed and actively seeking employment during the reference week of the twelfth of the month.

Employed - the members of the labor force who worked for pay or profit, or had a job from which they were temporarily absent because of illness, vacation, labor dispute, or other reasons not reflecting a shortage of work, or who worked fifteen hours or more as unpaid workers in an enterprise operated by a member of the family.

Unemployed - the members of the labor force who did not work but were seeking work or were awaiting recall from layoffs or the beginning of a new job within thirty days.

Unemployment Rate - the number of unemployed persons expressed as a percentage of the labor force.

Continued Claim - each week claimed subsequent to the filing of the initial claim for a week of unemployment compensation.

Current Employment Statistics (CES) - estimates of nonfarm employment and production workers hours and earnings by industry. They are produced as part of a nationwide program, in cooperation with the Bureau of Labor Statistics (BLS), for the state and each metropolitan statistical area (MSA) from a sample of employing establishments.

Current Population Survey (CPS) - a monthly household survey of the U.S. population conducted for the Bureau of Labor Statistics (BLS) by the Bureau of the Census, of 60,000 selected households. Respondents are interviewed to obtain information on the employment status of each household member age 16 and over, during the reference week of the twelfth.

Durable Goods - items with a normal life expectancy of three years or more. Automobiles, furniture, household appliances, and mobile homes are examples.

Extended Layoff Event - Fifty or more initial claims for unemployment insurance benefits from an establishment during a 5-week period, with at least 50 workers separated for more than 30 days.

Initial Claims - a new claim, filed to open a claim for unemployment compensation.

Metropolitan Statistical Area (MSA) - a geographical area comprised of a parish generally containing a central city (or twin cities) of 50,000 inhabitants or more and contiguous parishes that are socially and economically integrated with the central city.

Micropolitan Statistical Area (MC) - a geographical area comprised of a parish containing a central city of at least 10,000 but less than 50,000 inhabitants and contiguous parishes that are socially and economically integrated with the central city.

NAICS (North American Industry Classification System) - an industry classification system that groups establishments into industries based on the activities in which they are primarily engaged.

Nonfarm Employment - employment by place of work that does not include the self employed, unpaid family workers, domestics, or agriculture workers. All estimates of nonfarm employment in this publication are in cooperation with the U.S. Department of Labor Bureau of Labor Statistics and include all full-time and part-time workers who were employed during the pay period including the twelfth of the month.

Nondurable Goods - items that generally last for only a short period of time (less than three years). Food, beverages, apparel, and gasoline are common examples.

Seasonally Adjusted - monthly data that is adjusted to minimize the changes in any time series which result from normal annual occurrences such as Christmas, summer vacations, and weather patterns.

Separation - The release of persons from an employer as part of a mass layoff event. Such releases involve both persons subject to recall and those who are terminated by the establishment.

Subsector - refers to the three-digit NAICS code, which will fall under the particular sector. Example: If Manufacturing (31-33) is the industry sector, then Food manufacturing (311), Paper manufacturing (322), Chemical manufacturing (325), Transportation equipment manufacturing (336), are some of the subsectors of manufacturing.

Supersector - refers to these five categories: Total Nonfarm, Total Private, Goods-Producing, Service-Providing, and Private Service-Providing.

Summary Industry Sector - a combination of industry sectors. A summary sector may or may not be published. The summary industry sectors are Mining & Logging; Construction; Manufacturing; Trade, Transportation, & Utilities; Information; Financial Activities; Professional & Business Services; Education & Health Services; Leisure & Hospitality; Other Services; and Government.

Industry Sector - 20 industry sectors based on two-digit NAICS code. They are Agriculture, Forestry, Fishing and Hunting (11), Mining (21), Utilities (22), Construction (23), Manufacturing (31-33), Wholesale Trade (42), Retail Trade (44-45), Transportation and Warehousing (48-49), Information (51), Finance and Insurance (52), Real Estate and Rental and Leasing (53), Professional and Technical Services (54), Management of Companies and Enterprises (55), Administrative and Waste Services (56), Educational Services (61), Health Care and Social Assistance (62), Arts, Entertainment, and Recreation (71), Accommodation and Food Services (72), Other Services (81), and Public Administration (92).

Constraints of the monthly civilian labor force and nonfarm employment estimates:

The civilian labor force estimates are derived by a monthly survey of approximately 723 households throughout Louisiana following the Bureau of Labor Statistics (BLS) methodology. The US Census Bureau conducts the survey by calling randomly selected households and providing BLS with survey results. Households are asked for the number of residents who are sixteen and over and whether they were working or actively looking for work during the week of the twelfth of the month. Responses to these questions become part of the formula to determine the number of people employed and the number of individuals unemployed for the state, MSAs, and each parish every month.

The nonfarm employment estimates are derived from responses received from the monthly BLS survey of approximately 7,000 businesses across the state. Responses capture employment activity during the 12th of each month. This survey relies on responses from these businesses to produce industry employment levels for the state and all metropolitan statistical areas.

Both data sets are comparable with estimates for the U.S., all 50 states, and 387 metropolitan areas across the U.S.

LABOR MARKET INFORMATION WEB LINKS

Civilian Labor Force - LAUS (Local Area Unemployment Statistics) –

Employment, Unemployment and Unemployment Insurance Rate

LA <https://www.louisianaworks.net/hire/altentry.asp?action=lmiguest>

Left menu: Historical Data Analysis – Employment and Wage Data – Labor Force Data – Labor Force Employment and Unemployment (LAUS)

States <http://data.bls.gov/cgi-bin/dsrv?la>

US <http://data.bls.gov/pdq/querytool.jsp?survey=ln>

Consumer Price Index (US) <http://data.bls.gov/cgi-bin/surveymost?cu>

Download Louisiana Workforce Commission’s Labor Market Information Products

LA http://www.laworks.net/Downloads/Downloads_LMI.asp

Employment and Wage Data – Quarterly Census of Employment and Wages (QCEW)

LA <https://www.louisianaworks.net/hire/altentry.asp?action=lmiguest>

Left menu: Historical Data Analysis – Employment and Wage Data – Industry Data – Quarterly Census of Employment and Wages (QCEW)

States & US <http://data.bls.gov/cgi-bin/dsrv?en>

NAICS (North American Industry Classification System) Codes Look-Up Table

<http://www.census.gov/eos/www/naics/>

Nonfarm Employment, Hours and Earnings - CES (Current Employment Statistics)

LA <https://www.louisianaworks.net/hire/altentry.asp?action=lmiguest>

Left menu: Historical Data Analysis – Employment and Wage Data – Industry Data – Current Employment Statistics (CES) – select Show Earnings Data under table

States <http://data.bls.gov/cgi-bin/dsrv?sm>

US <http://data.bls.gov/cgi-bin/dsrv?ce>

Unemployment Insurance Claimants Data (by Occupation) - Unemployment Insurance (UI)

LA <https://www.louisianaworks.net/hire/altentry.asp?action=lmiguest>

Left menu: Historical Data Analysis – Employment and Wage Data – Labor Force Data – Unemployment Insurance Claimants

Unemployment Insurance Claims Data (by Region, Parish, Industry) - UI

LA http://www.laworks.net/LaborMarketInfo/LMI_UIClaimsReportMenu.asp

States & US <http://ows.doleta.gov/unemploy/claims.asp>

Unemployment Rates for all States - LAUS

States <http://www.bls.gov/web/laus/laumstrk.htm>



Office of Occupational Information Services
 Research & Statistics Division
 Post Office Box 94094
 Baton Rouge, LA 70804-9094

Data for: 06/2017



Workforce At A Glance is published monthly by the Louisiana Workforce Commission. The material in this publication is not copyrighted and may be reproduced; however, the LWC would appreciate credit for the material used and a copy of the reprint.

LMI Staff:

Sachin Chintawar, LMI Manager
 Kelsey Canizaro
 Jeffrey Duplantier
 Kelly Ebey

Contributors:

Kelsey Canizaro
 Karen Clark
 Natalie Foster-Lawrence
 Karl Gleichman
 Mark Jones
 Sean Painter
 Tara Robinson

Contact Us:

Phone (225) 342-3141; Fax (225) 219-7759
 Toll Free (888) 302-7662
 Email lmi@lwc.la.gov

John Bel Edwards, Governor
 State of Louisiana

Ava Dejoie, Executive Director
 Louisiana Workforce Commission

Connect With Us:

Website: <https://www.laworks.net>

 <https://www.facebook.com/LouisianaWorks>

 <https://twitter.com/LouisianaWorks>

 <https://www.linkedin.com/company/louisiana-workforce-commission>

 <http://instagram.com/louisianaworks>