

# Louisiana Workforce

## at a glance

www.laworks.net

Release Date: July 27, 2011

Data For: June 2011

### In This Issue

2 Economic Comparison

3 NSA State & Area Employment

4 – 7 Data Trends (Graphs)

8 – 10 Nonfarm Employment

11 – 12 Unemployment Rates & Civilian Labor Force

13 Average Hours & Earnings

14 UI Claimants & Labor Market Q & A

15 – 16 Glossary, Data Constraints, Downloads & Web Links

### Statewide Overview

Seasonally adjusted nonfarm employment for Louisiana was estimated at 1,906,500 in June 2011. This represents a loss of 4,100 from the previous month, but a 12,600-job increase from June 2010. Government posted the largest over-the-month change, losing 2,700 jobs. The government sector also posted the largest over-the-year change, losing 15,200 jobs.

Over the month, four of the 11 industry sectors had increases in employment, six showed a decrease, and one showed no change. The largest gain over the month was seen in trade, transportation, and utilities, which added 1,100 jobs. The information sector showed 700 more jobs than in May. Education and health services added 500 jobs over the month, while other services rose by 400. After government, the largest monthly decrease occurred in construction, which dropped by 1,800. The leisure and hospitality sector showed 1,300 fewer jobs than in May, while mining and logging lost 500 positions. Manufacturing declined by 400 jobs from May, while professional and business services lost 100 jobs. Financial activities showed no change.

Over the year, seven of the 11 sectors added jobs. The largest over-the-year gain occurred in education and health services, which posted an increase of 9,700. Leisure and hospitality also posted a strong gain of 8,000 compared to last year. Manufacturing saw its figure increase by 6,000, while trade, transportation, and utilities added 4,900 jobs. The information sector rose by 2,200 from June 2010, while other services gained 500 jobs. The mining and logging sector increased by 400 from last year. After government, the largest annual decline was seen in construction, which fell by 2,100 jobs from last June. Professional and business services declined by 1,500, while financial activities lost 300 jobs over the year.

The June 2011 preliminary seasonally adjusted unemployment rate for Louisiana was 7.8 percent, a decrease from the May revised rate of 8.2 percent. The national unemployment rate for June was 9.2 percent, an increase from the May rate of 9.1 percent. Total unemployment in the state for June was 160,418. The state civilian labor force decreased to 2,045,363 with a decrease in total employment to 1,884,945.

### Economic Indicators

#### Seasonally Adjusted

#### Civilian Labor Force

	United States	Louisiana
Labor Force	153,421,000	2,045,363
Employed	139,334,000	1,884,945
Unemployed	14,087,000	160,418
Unemployment Rate	9.2	7.8

#### Nonfarm Wage and

#### Salary Employment

	JUNE 2011	JUNE 2011
	United States	Louisiana
Total Nonfarm	131,017,000	1,906,500
Mining and Logging	786,000	52,300
Construction	5,513,000	120,400
Manufacturing	11,707,000	144,000
Trade, Transportation, and Utilities	24,900,000	369,700
Information	2,686,000	29,200
Financial Activities	7,611,000	92,400
Professional and Business Services	17,168,000	192,800
Education and Health Services	19,923,000	280,800
Leisure and Hospitality	13,210,000	201,300
Other Services	5,449,000	66,600
Government	22,064,000	357,000

#### All Employees Average Hours & Earnings

(Not Seasonally Adjusted)

	JUNE 2011	JUNE 2011
	United States	Louisiana
<b>Construction</b>		
Average Weekly Earnings	\$ 979.68	\$ 920.22
Average Weekly Hours	39.0	42.0
Average Hourly Wages	\$ 25.12	\$ 21.91
<b>Manufacturing</b>		
Average Weekly Earnings	\$ 952.23	\$ 1,020.08
Average Weekly Hours	40.4	41.0
Average Hourly Wages	\$ 23.57	\$ 24.88

#### Louisiana Unemployment Insurance Activities

	JUNE 2011
<b>Claims</b>	
Initial New & Renewals	17,156
Continued Weekly Intrastate Only	171,248
<b>Insured Unemployment Rate</b>	2.5
<b>Benefits</b>	
Number of First Payment	9,166
Benefits Paid (000's)	\$ 28,295
Weeks Compensated	146,056
Average Wkly. Benefit Amount	\$ 195.38
Average Duration of Claim (weeks)	15.9
<b>Exhaustions</b>	3,472

#### United States Consumer Price Index

	JUNE 2011
All Urban Consumers	225.7



The civilian labor force and nonfarm **estimates** are prepared according to Bureau of Labor Statistics (BLS) methodology and are comparable with the U.S. and other states' data. For more information, go to page 15.

## Economic Comparison

Seasonally Adjusted	PRELIMINARY JUNE 2011		REVISED MAY 2011		REVISED JUNE 2010	
	United States	Louisiana	United States	Louisiana	United States	Louisiana
<b>Civilian Labor Force</b>						
Labor Force	153,421,000	2,045,363	153,693,000	2,060,548	153,684,000	2,084,341
Employed	139,334,000	1,884,945	139,779,000	1,890,869	139,092,000	1,928,721
Unemployed	14,087,000	160,418	13,914,000	169,679	14,593,000	155,620
Unemployment Rate	9.2	7.8	9.1	8.2	9.5	7.5
<b>Nonfarm Wage and Salary Employment</b>	<b>JUNE 2011</b>	<b>JUNE 2011</b>	<b>MAY 2011</b>	<b>MAY 2011</b>	<b>JUNE 2010</b>	<b>JUNE 2010</b>
	<b>United States</b>	<b>Louisiana</b>	<b>United States</b>	<b>Louisiana</b>	<b>United States</b>	<b>Louisiana</b>
Total Nonfarm	131,017,000	1,906,500	130,999,000	1,910,600	129,981,000	1,893,900
Mining and Logging	786,000	52,300	779,000	52,800	704,000	51,900
Construction	5,513,000	120,400	5,522,000	122,200	5,511,000	122,500
Manufacturing	11,707,000	144,000	11,701,000	144,400	11,548,000	138,000
Trade, Transportation, and Utilities	24,900,000	369,700	24,883,000	368,600	24,587,000	364,800
Information	2,686,000	29,200	2,686,000	28,500	2,701,000	27,000
Financial Activities	7,611,000	92,400	7,626,000	92,400	7,628,000	92,700
Professional and Business Services	17,168,000	192,800	17,156,000	192,900	16,683,000	194,300
Education and Health Services	19,923,000	280,800	19,923,000	280,300	19,535,000	271,100
Leisure and Hospitality	13,210,000	201,300	13,176,000	202,600	13,018,000	193,300
Other Services	5,449,000	66,600	5,444,000	66,200	5,343,000	66,100
Government	22,064,000	357,000	22,103,000	359,700	22,723,000	372,200

### All Employees Average Hours & Earnings

Construction	United States ( Not Seasonally Adjusted)			Louisiana ( Not Seasonally Adjusted)		
	JUNE 2011	MAY 2011	JUNE 2010	JUNE 2011	MAY 2011	JUNE 2010
Average Weekly Earnings	\$ 979.68	\$ 977.18	\$ 951.18	\$ 920.22	\$ 938.74	\$ 868.56
Average Weekly Hours	39.0	38.7	38.2	42.0	42.4	42.0
Average Hourly Wages	\$ 25.12	\$ 25.25	\$ 24.90	\$ 21.91	\$ 22.14	\$ 20.68
<b>Manufacturing</b>						
Average Weekly Earnings	\$ 952.23	\$ 962.63	\$ 930.63	\$ 1,020.08	\$ 1,020.10	\$ 1,008.57
Average Weekly Hours	40.4	40.6	40.2	41.0	41.1	42.7
Average Hourly Wages	\$ 23.57	\$ 23.71	\$ 23.15	\$ 24.88	\$ 24.82	\$ 23.62

### Louisiana Unemployment Insurance Activities

Claims	JUNE 2011	MAY 2011	JUNE 2010	% Change From	
				MAY 2011	JUNE 2010
Initial New & Renewals	17,156	18,095	19,684	-5.2	-12.8
Continued Weekly Intrastate Only	171,248	191,565	216,721	-10.6	-21.0
<b>Insured Unemployment Rate*</b>	2.5	2.5	3.1	-0.8	-21.0
<b>Benefits</b>					
Number of First Payment	9,166	8,474	9,212	8.2	-0.5
Benefits Paid (000's)	\$ 28,295	\$ 32,247	\$ 36,313	-12.3	-22.1
Weeks Compensated	146,056	166,081	177,619	-12.1	-17.8
Average Wkly. Benefit Amount	\$ 195.38	\$ 195.88	\$ 200.03	-0.3	-2.3
Average Duration of Claim (w eeks)	15.9	19.6	19.3	-18.7	-17.4
<b>Exhaustions</b>	3,472	4,561	5,166	-23.9	-32.8

\* Insured unemployment rate is for the week including the 12th of the month.

### United States Consumer Price Index

	JUNE 2011	% Change From:		MAY 2011	% Change From:	
	Index	Prior Month	Prior Year	Index	Prior Month	Prior Year
<b>All Urban Consumers</b>	225.7	-0.1	3.6	226.0	0.5	3.6

# Not Seasonally Adjusted State and Area Employment

Not seasonally adjusted nonfarm employment for Louisiana was estimated at 1,908,700 for June 2011. Over the month, employment lost 4,800 jobs from May, while over the year employment gained 11,600 jobs. Goods-producing employment dropped by 1,200 jobs over the month, while the service-providing employment lost 3,600 jobs when compared to May. Over the year, goods-producing industries gained 2,600 jobs while the service-providing sector gained 9,000.

Total nonfarm employment in June for the Alexandria MSA was 66,500, an increase of 1,400 jobs from May, but a gain of 2,900 from a year ago. The goods-producing sector gained 100 jobs over the month, and added 400 jobs over the year. Service-providing employment added 1,300 jobs from May and gained 2,500 jobs from June 2010.

Total nonfarm employment for the Baton Rouge MSA was estimated at 363,200 for June 2011. Over the month, the MSA showed a decrease of 1,800 jobs, while over the year, nonfarm employment decreased by 1,900 jobs. Goods-producing employment showed a loss of 1,500 jobs from last month and a loss of 2,400 from last year. The service-providing sector lost 300 jobs from May, while adding 500 jobs over the year.

The Houma MSA nonfarm employment was estimated at 94,600 for June 2011. This shows a loss over the month of 400 jobs but an over-the-year gain of 1,800. Goods-producing showed no change over the month, while adding 600 jobs from last year. Service-providing dropped 400 jobs from last month but picked up 1,200 over the year.

Total nonfarm employment for the Lafayette MSA was estimated at 148,700 for June 2011. This represents a loss from May of 800 jobs but an increase of 400 jobs from last year. Over the month, goods-producing employment fell by 100, while the service-providing sector lost 700 jobs. Over the year, goods-producing employment increased by 300 jobs, while the service-providing sector increased by 100 jobs.

Total nonfarm employment for the Lake Charles MSA was 92,700 for June 2011. This represents a gain of 400 jobs from May and an increase of 2,300 jobs over the year. Over the month, the goods-producing sector lost 100 jobs, while the service-providing sector added 500 jobs. The goods-producing sector lost 400 jobs from last June, while the service-providing sector increased by 2,700 jobs over the year.

Total nonfarm employment for the Monroe MSA was estimated at 75,700 for June 2011. This represents a loss of 500 jobs over the month and a loss of 100 jobs over the year. The goods-producing employment showed no change either from May or from June of 2010. The service-providing sector lost 500 jobs from May and 100 jobs over the year.

Total nonfarm employment for the New Orleans MSA was 524,800 for June 2011. Over the month the MSA lost 2,300 jobs, while over the year saw an increase of 2,900 positions. Goods-producing employment showed no change from May, but lost 1,300 jobs from June 2010. The service-providing sector declined by 2,300 jobs from May but added 4,200 jobs from June 2010.

Total nonfarm employment for the Shreveport MSA was 181,200 for June 2011. This shows a decrease of 200 jobs from last month but a gain of 1,900 from June 2010. Goods-producing employment showed an increase of 200 from May and a gain of 1,700 from June 2010. Service-providing employment lost 400 jobs over the month but added 200 jobs compared to last year.

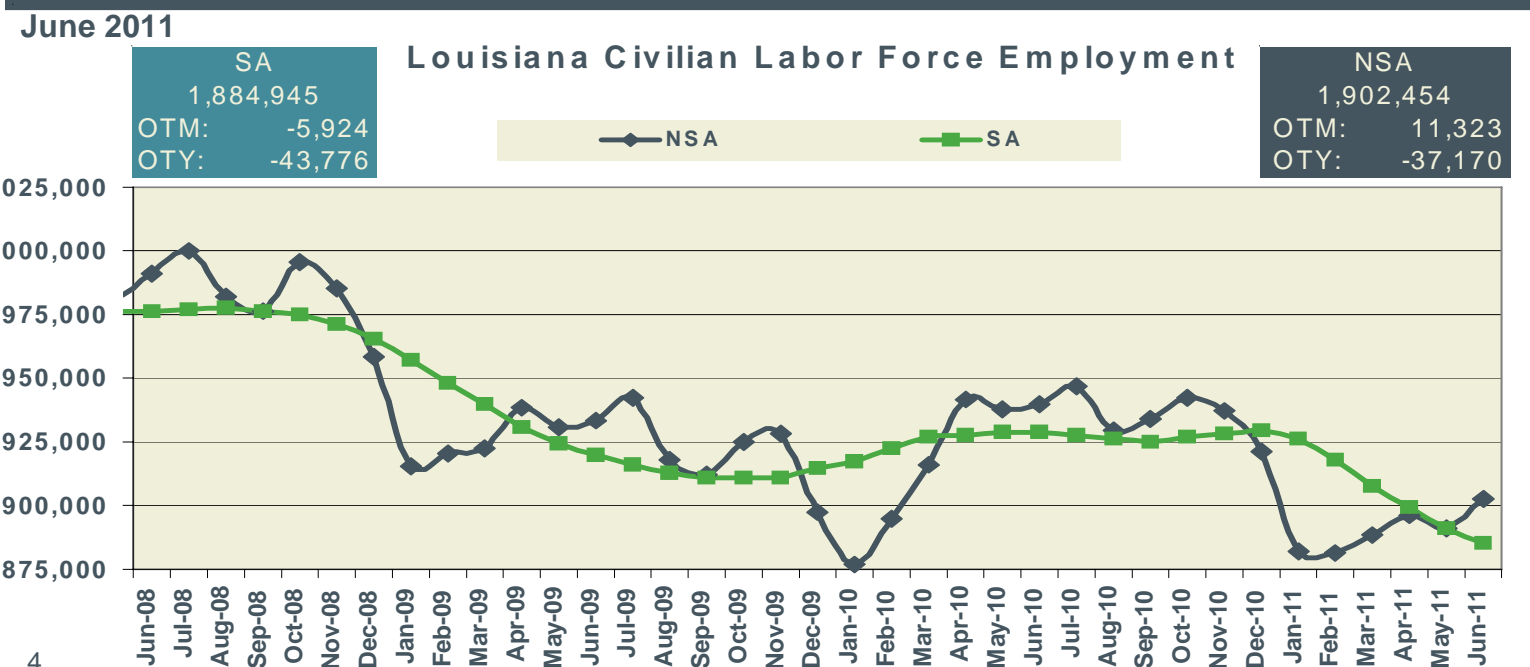
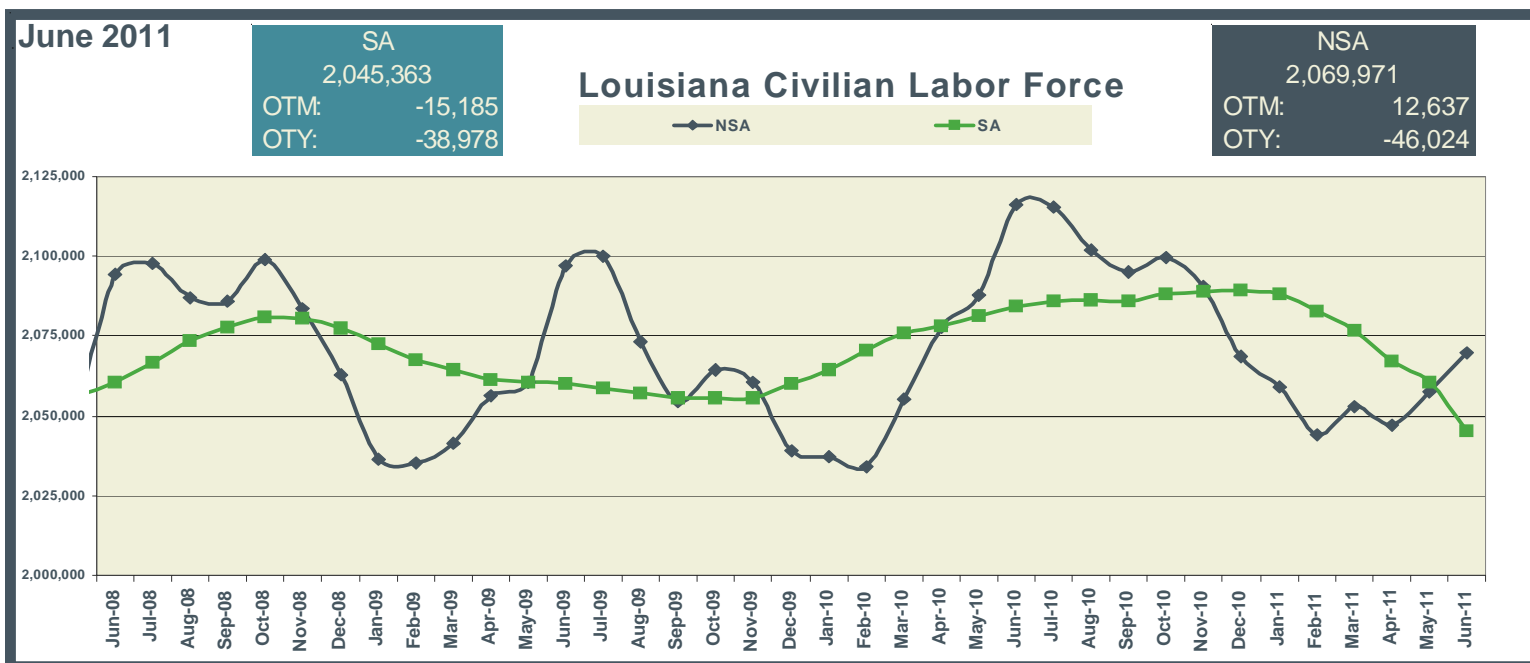
# Keys to Graphs

The following graphs have been designed to reflect the over-the-year trends in the statistical data. Below are the most frequently used abbreviations.

- OTM over-the-month change in employment
- OTY over-the-year change in employment
- SA seasonally adjusted estimates
- NSA not seasonally adjusted estimates

Graphs for statewide reflect seasonally adjusted (SA) estimates compared to not seasonally adjusted (NSA) data.

Metropolitan Statistical Areas (MSAs) graphs denote nonfarm employment levels compared to a three year red trend line of the estimated employment. The navy lines in the graphs are the over-the-month changes for each year.

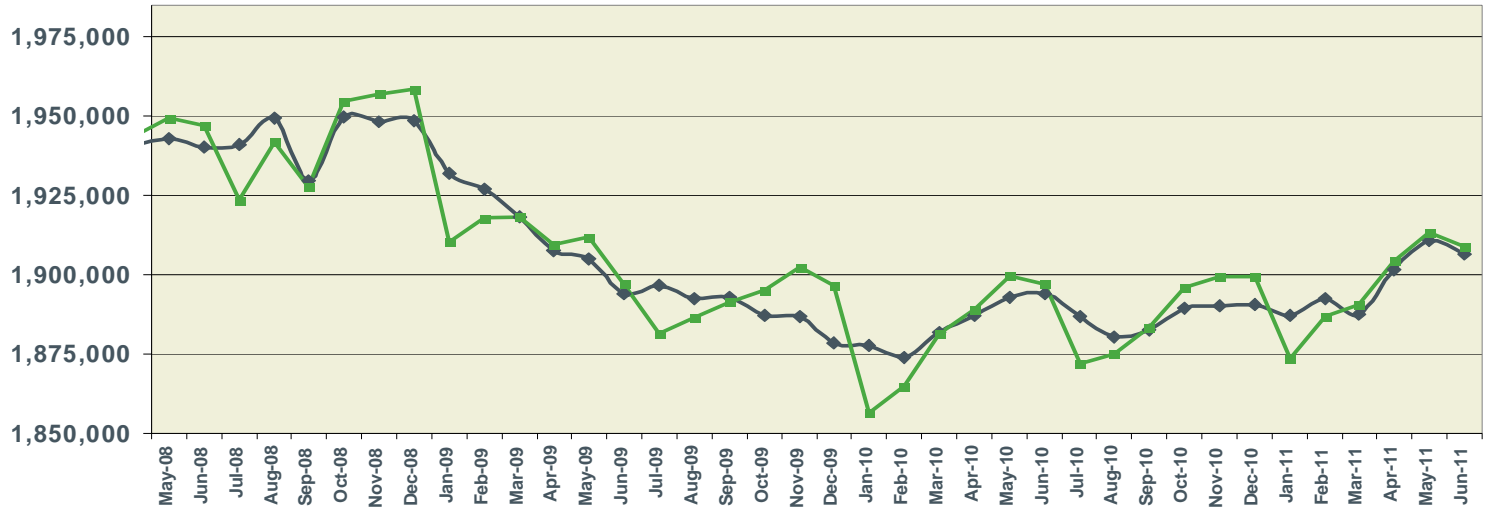


June 2011

SA  
1,906,500  
OTM: -4,100  
OTY: 12,600

### Louisiana Nonfarm Employment

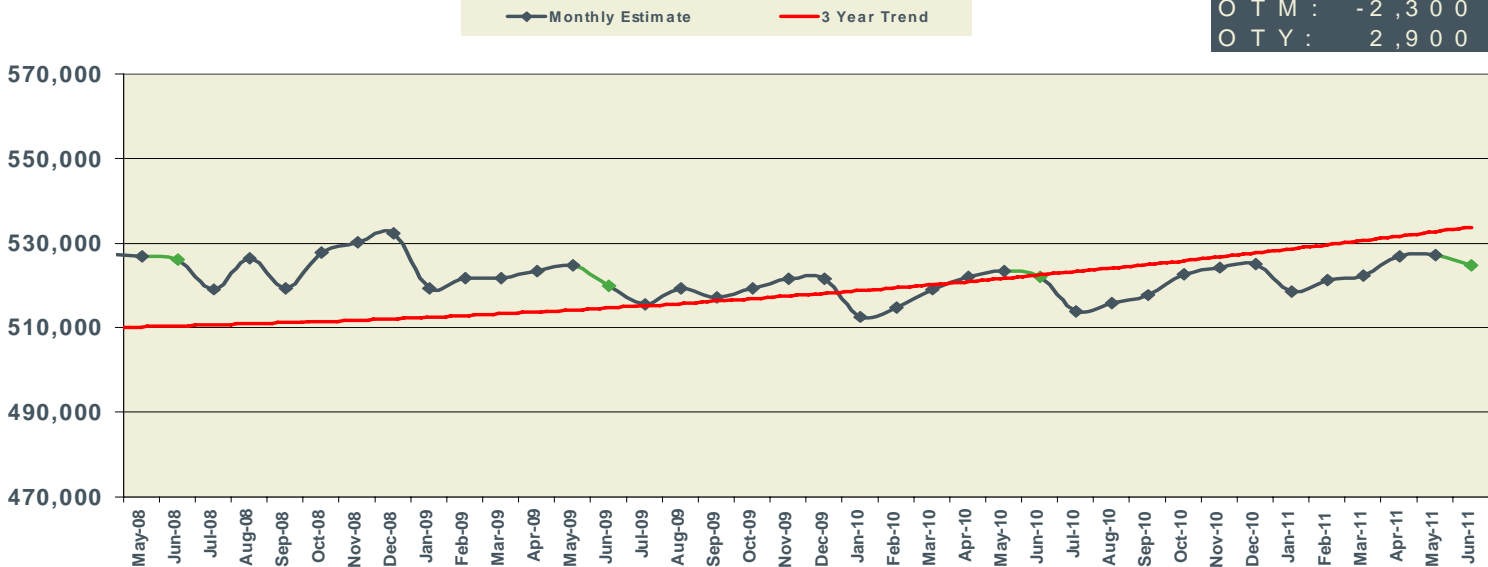
NSA  
1,908,700  
OTM: -4,800  
OTY: 11,600



June 2011

### New Orleans MSA Nonfarm Employment

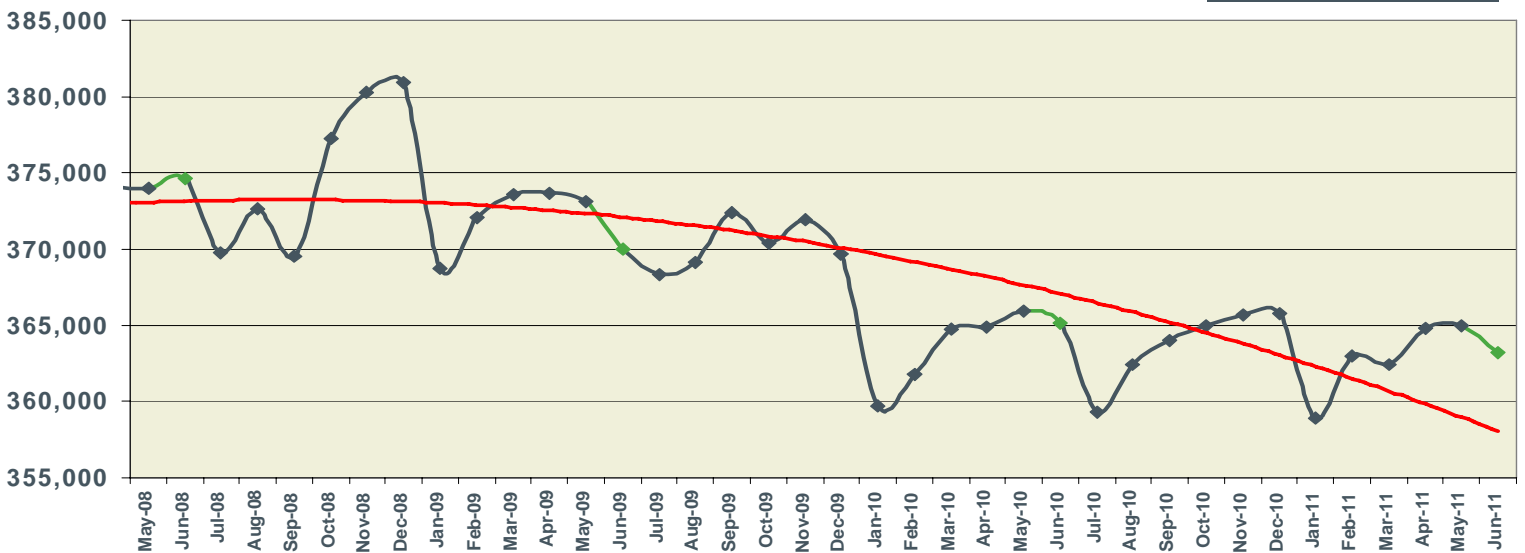
NSA  
524,800  
OTM: -2,300  
OTY: 2,900



June 2011

### Baton Rouge MSA Nonfarm Employment

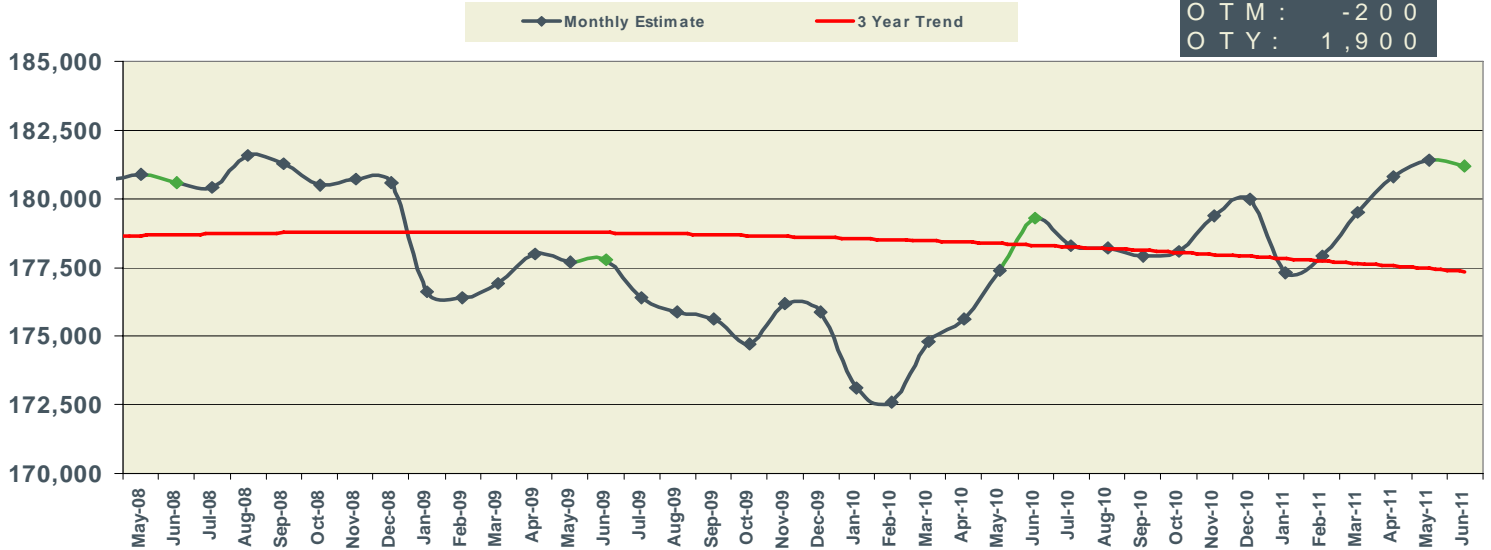
NSA  
363,200  
OTM: -1,800  
OTY: -1,900



June 2011

### Shreveport MSA Nonfarm Employment

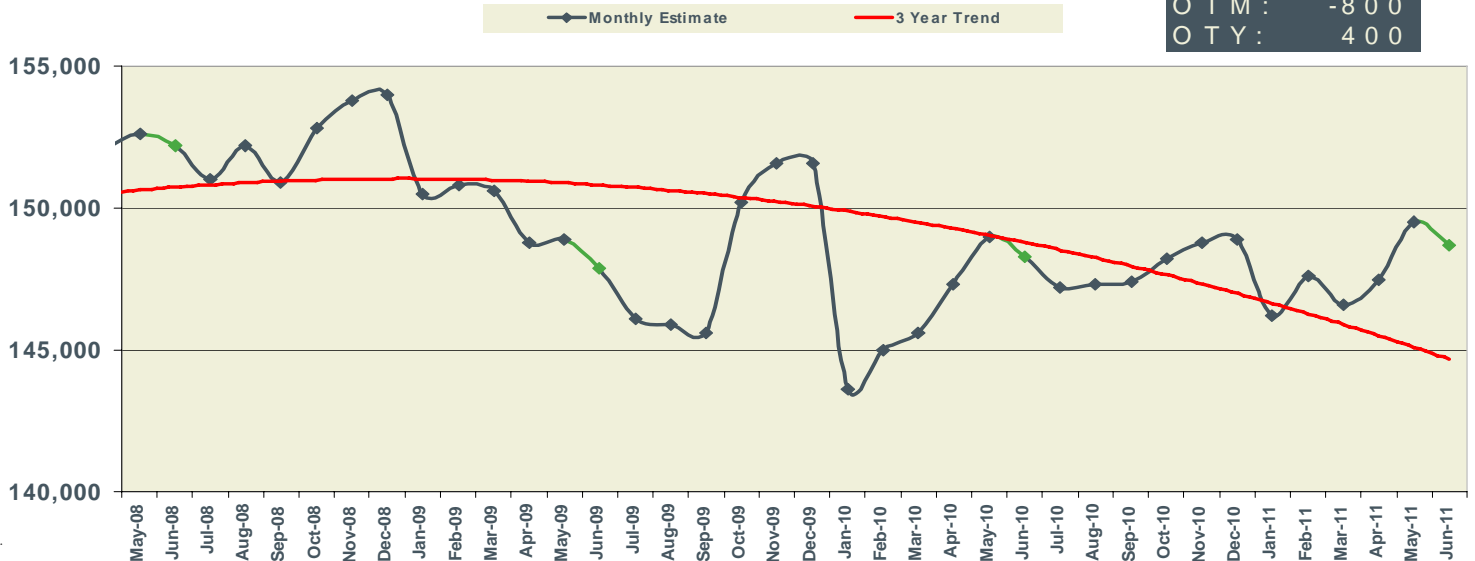
NSA	181,200
OTM	-200
OTY	1,900



June 2011

### Lafayette MSA Nonfarm Employment

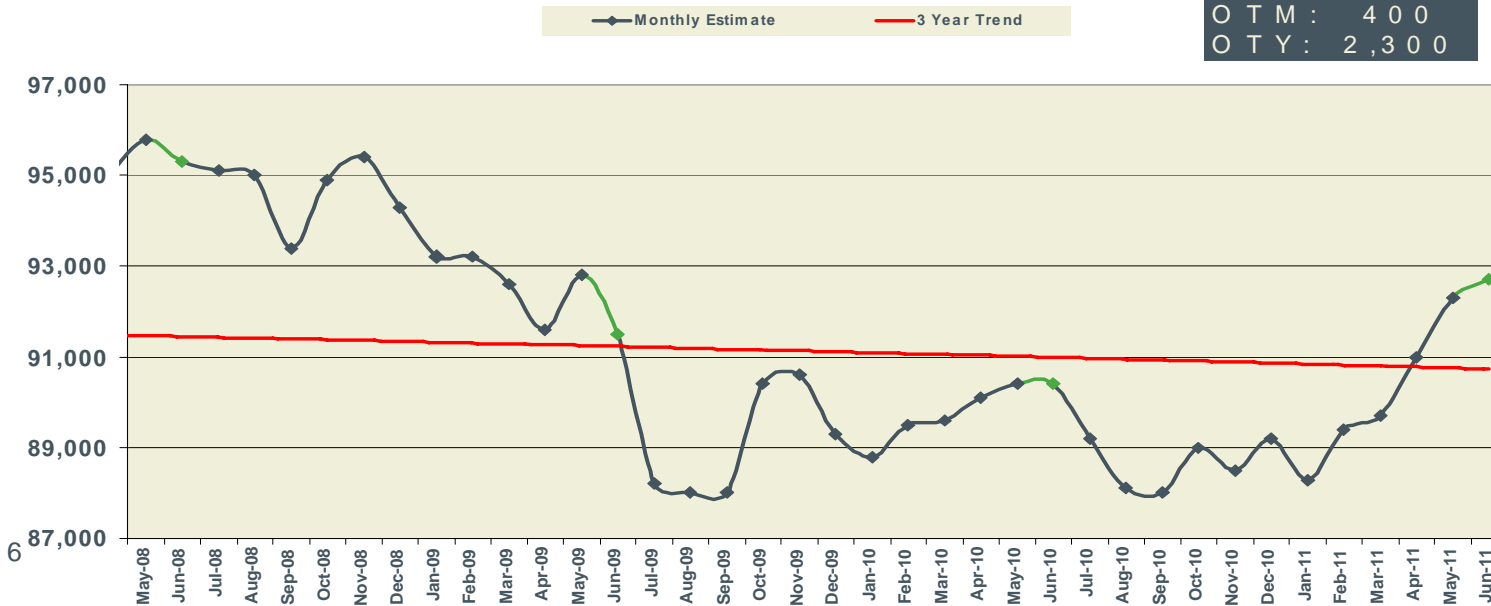
NSA	148,700
OTM	-800
OTY	400



June 2011

### Lake Charles MSA Nonfarm Employment

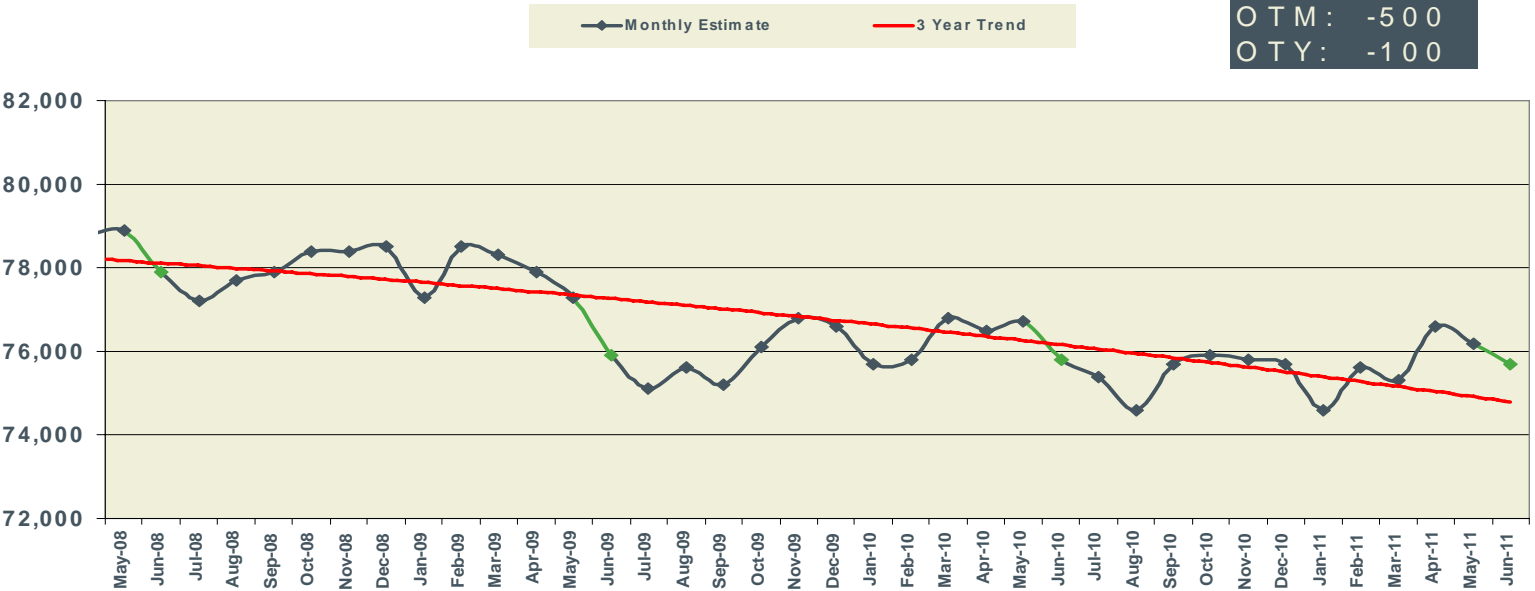
NSA	92,700
OTM	400
OTY	2,300



June 2011

### Monroe MSA Nonfarm Employment

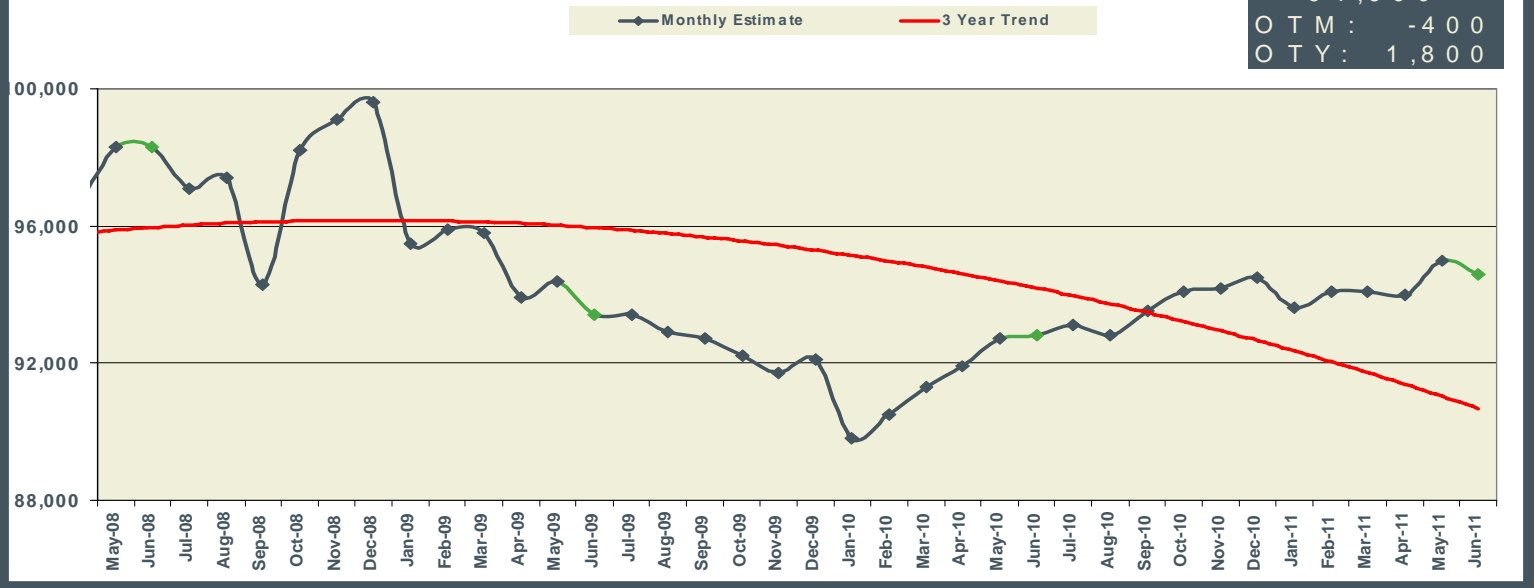
NSA  
75,700  
OTM: -500  
OTY: -100



June 2011

### Houma MSA Nonfarm Employment

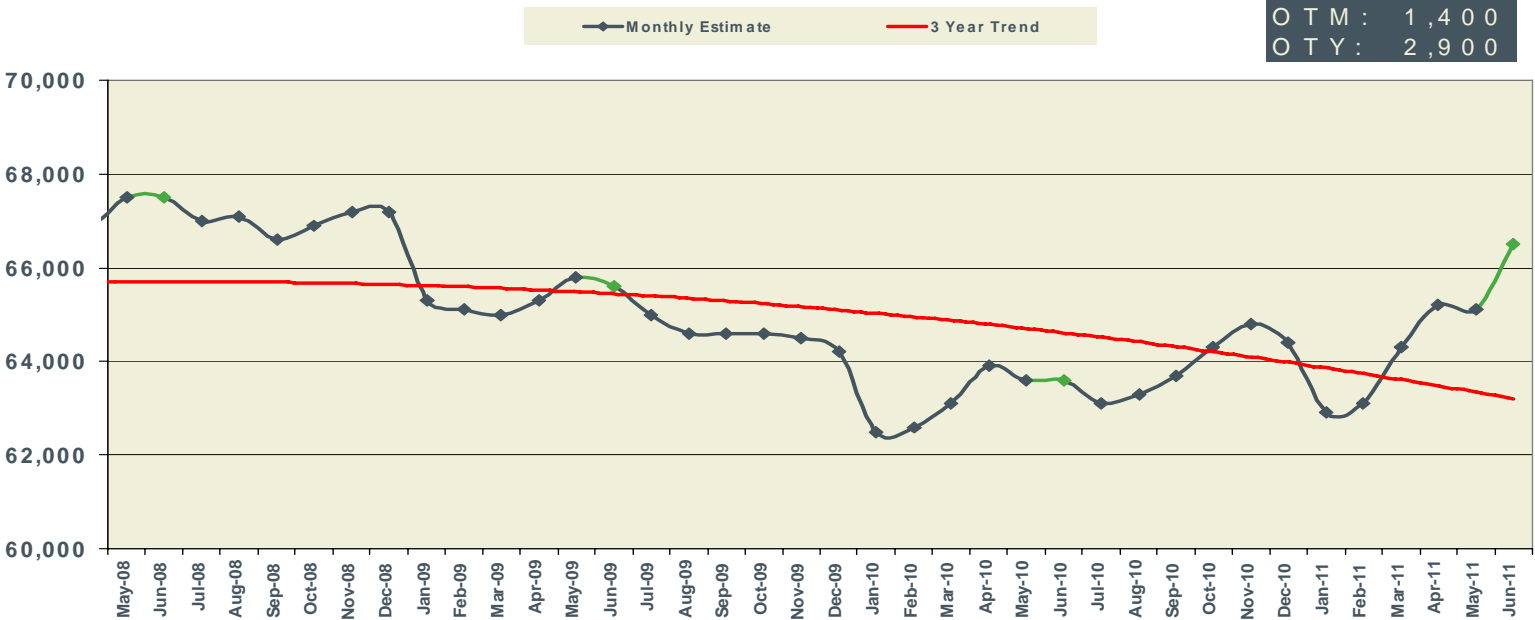
NSA  
94,600  
OTM: -400  
OTY: 1,800



June 2011

### Alexandria MSA Nonfarm Employment

NSA  
66,500  
OTM: 1,400  
OTY: 2,900



8 LOUISIANA & MSAs NONFARM EMPLOYMENT									
Not Seasonally Adjusted	LOUISIANA			NEW ORLEANS-METAIRIE-KENNER MSA			BATON ROUGE MSA		
	PREL	REV	REV	PREL	REV	REV	PREL	REV	REV
	June 2011	May 2011	June 2010	June 2011	May 2011	June 2010	June 2011	May 2011	June 2010
Total Nonfarm	1,908,700	1,913,500	1,897,100	524,800	527,100	521,900	363,200	365,000	365,100
Total Private	1,552,900	1,552,100	1,526,900	445,200	446,500	439,200	287,300	287,400	288,500
Goods-Producing	317,700	318,900	315,100	69,900	69,900	71,200	62,900	64,400	65,300
Mining & Logging	52,600	53,000	52,500	7,500	7,500	7,700	2,000	2,000	1,900
Oil & Gas Extraction	8,600	8,600	8,600	2,900	2,900	2,900			
Crude Petroleum & Natural Gas Extraction	8,200	8,000	8,000						
Support Activities for Mining	39,800	39,700	39,900						
Drilling Oil & Gas Wells	9,500	9,400	8,900						
Construction	121,400	122,400	124,100	30,300	30,700	30,700	35,800	37,400	38,500
Construction of Buildings	20,900	20,600	22,900				6,500	6,800	7,300
Residential Building Construction	6,000	5,900	6,600						
Nonresidential Building Construction	14,900	14,700	16,300				6,100	6,300	6,400
Heavy & Civil Engineering Construction	38,200	39,500	39,800	8,600	8,500	9,000	12,300	13,000	13,700
Utility System Construction	19,400	19,000	19,100						
Specialty Trade Contractors	62,300	62,300	61,400	16,000	16,200	15,800	17,000	17,600	17,500
Manufacturing	143,700	143,500	138,500	32,100	31,700	32,800	25,100	25,000	24,900
Durable Goods	71,400	71,400	70,200	15,100	15,300	16,700			
Transportation Equipment Manufacturing	15,900	16,100	17,900	6,700	6,900	8,500			
Ship & Boat Building	11,000	11,100	12,100	5,400	5,600	6,300			
Nondurable Goods	72,300	72,100	68,300	17,000	16,400	16,100	16,900	16,900	16,900
Food Manufacturing	15,700	15,900	16,000						
Paper Manufacturing	7,100	7,100	7,100						
Petroleum & Coal Products Mfg. & Chemical Mfg.									
Petroleum & Coal Products Manufacturing	11,600	11,600	11,600						
Chemical Manufacturing	23,600	23,200	22,700	4,600	4,700	4,400	9,900	9,900	9,400
Basic Chemical Manufacturing	12,200	12,200	12,200				5,500	5,500	5,500
Service-Providing	1,591,000	1,594,600	1,582,000	454,900	457,200	450,700	300,300	300,600	299,800
Private Service-Providing	1,235,200	1,233,200	1,211,800	375,300	376,600	368,000	224,400	223,000	223,200
Trade, Transportation, & Utilities	369,900	368,600	364,200	103,900	103,900	102,400	64,700	64,400	64,500
Wholesale Trade	70,100	68,900	70,400	22,400	22,000	22,200	12,100	12,100	12,300
Merchant Wholesalers, Durable Goods	37,300	36,700	36,700	10,600	10,400	10,700			
Merchant Wholesalers, Nondurable Goods	23,900	23,800	24,800	7,800	7,700	7,800			
Retail Trade	219,200	220,000	216,800	56,800	57,400	56,200	40,900	40,600	40,600
Clothing & Clothing Accessories Stores, General Merchandise									
Motor Vehicle & Parts Dealers	25,800	25,800	25,900						
Building Material & Garden Equipment & Supplies Dealers	20,200	20,500	20,000						
Food & Beverage Stores	34,800	35,300	35,500						
Grocery Stores	30,400	30,300	30,900	7,800	8,100	8,200	5,600	5,600	5,700
Health & Personal Care Stores	15,500	15,400	15,700						
Gasoline Stations	18,700	18,600	18,400						
Clothing and Clothing Accessories Stores	17,800	17,600	18,000						
General Merchandise Stores	53,300	53,000	51,100	12,700	12,800	12,000	9,400	9,400	9,200
Department Stores	16,800	16,700	16,100				2,400	2,400	2,600
Transportation, Warehousing, & Utilities	80,600	79,700	77,000	24,700	24,500	24,000	11,700	11,700	11,600
Transportation and Warehousing	71,600	70,600	67,600						
Truck Transportation	16,300	16,200	16,400						
Support Activities for Transportation	20,000	19,500	18,800						
Information	29,300	28,400	27,700	9,200	8,900	8,200	5,300	5,200	5,200
Telecommunications	10,500	10,300	10,800						
Financial Activities	92,600	92,200	93,300	25,800	25,700	26,000	16,700	16,700	17,200
Finance & Insurance	63,400	62,100	62,800	18,400	18,100	18,500	11,900	11,800	12,300
Credit Intermediation & Related Activities	30,800	31,600	32,200	7,400	7,400	7,600			
Depository Credit Intermediation	22,000	22,700	23,100	5,900	5,700	5,900	4,300	4,300	4,500
Insurance Carriers & Related Activities	25,700	26,400	26,400						
Real Estate & Rental & Leasing	29,200	30,100	30,500						
Professional & Business Services	193,300	192,400	195,000	67,900	67,700	69,300	42,200	41,100	41,900
Professional, Scientific, & Technical Services	79,500	79,000	78,800	29,800	29,100	29,200	18,900	18,400	18,300
Legal Services	19,000	18,600	19,400	8,300	8,200	8,400			
Accounting, Tax Preparation, Bookkeeping & Payroll Services	9,400	10,000	9,400						
Architectural, Engineering, & Related Services	24,300	23,700	23,300						
Management of Companies & Enterprises	23,900	23,700	23,900	8,000	8,100	8,200			
Admin. & Support & Waste Mgmt. & Remediation Serv.	89,900	89,700	92,300	30,100	30,500	31,900	18,200	18,100	18,600
Administrative & Support Services	80,800	79,300	83,400	27,500	27,900	29,600			
Employment Services	28,900	29,300	29,900	9,800	10,700	10,600			
Services to Buildings & Dwellings	20,200	19,900	20,300						
Education & Health Services	279,000	280,000	268,000	75,900	76,400	72,900	48,300	49,300	48,500
Educational Services	33,200	36,400	33,200	18,200	18,800	17,400			
Colleges, Universities, & Professional Schools	16,900	17,700	17,800	9,600	10,200	9,900			
Health Care & Social Assistance	245,800	243,600	234,800	57,700	57,600	55,500	43,900	42,800	41,900
Ambulatory Health Care Services	89,900	88,400	85,600	21,800	21,700	21,200	18,200	18,000	17,100
Offices of Physicians	34,300	34,000	33,500						
Home Health Care Services	22,200	22,000	21,200						
Hospitals	68,100	67,200	65,700	18,700	18,700	18,200	11,700	11,600	11,600
Nursing & Residential Care Facilities	42,300	42,300	41,000						
Nursing Care Facilities	26,400	26,200	25,500						
Social Assistance	45,500	45,700	42,500						
Leisure & Hospitality	204,300	205,100	197,100	73,500	75,000	70,300	34,200	33,500	32,700
Arts, Entertainment, & Recreation	29,100	28,600	29,900	10,200	10,400	10,100			
Amusement, Gambling, & Recreation Industries	24,300	23,100	23,900	6,700	6,300	6,600			
Gambling Industries	10,200	10,300	10,600	2,100	2,100	2,000			
Accommodation & Food Services	175,200	176,500	167,200	63,300	64,600	60,200	28,000	27,400	27,200
Accommodation	30,000	29,500	27,700	13,800	13,700	13,400			
Food Services & Drinking Places	145,200	147,000	139,500	49,500	50,900	46,800	25,800	25,900	25,000
Other Services	66,800	66,500	66,500	19,100	19,000	18,900	13,000	12,800	13,200
Repair & Maintenance	19,500	19,400	19,300						
Automotive Repair & Maintenance	10,600	10,700	10,700						
Personal & Laundry Services	15,600	15,600	15,500						
Government	355,800	361,400	370,200	79,600	80,600	82,700	75,900	77,600	76,600
Federal Government	31,400	31,600	37,400	12,400	12,400	14,100	2,900	3,000	4,000
State Government	104,300	110,300	106,300	17,600	18,900	18,800	39,200	40,500	39,000
Local Government	220,100	219,500	226,500	49,600	49,300	49,800	33,800	34,100	33,600

## LOUISIANA &amp; MSAs NONFARM EMPLOYMENT

9

Not Seasonally Adjusted	SHREVEPORT-BOSSIER CITY MSA			LAFAYETTE MSA			LAKE CHARLES MSA		
	PREL	REV	REV	PREL	REV	REV	PREL	REV	REV
	JUNE 2011	MAY 2011	JUNE 2010	JUNE 2011	MAY 2011	JUNE 2010	JUNE 2011	MAY 2011	JUNE 2010
Total Nonfarm	181,200	181,400	179,300	148,700	149,500	148,300	92,700	92,300	90,400
Total Private	145,500	145,600	143,500	131,400	131,400	130,700	76,900	76,500	73,400
Goods-Producing	26,700	26,500	25,000	31,700	31,800	31,400	18,300	18,400	18,700
Mining & Logging	6,500	6,400	5,800	15,800	15,800	15,400	1,100	1,100	1,200
Oil & Gas Extraction									
Crude Petroleum & Natural Gas Extraction									
Support Activities for Mining				13,500	13,500	13,300			
Drilling Oil & Gas Wells									
Construction	9,700	9,600	9,000	5,800	5,800	6,500	7,800	7,900	8,300
Construction of Buildings									
Residential Building Construction									
Nonresidential Building Construction									
Heavy & Civil Engineering Construction							3,400	3,500	3,900
Utility System Construction									
Specialty Trade Contractors									
Manufacturing	10,500	10,500	10,200	10,100	10,200	9,500	9,400	9,400	9,200
Durable Goods									
Transportation Equipment Manufacturing	1,000	1,100	1,300						
Ship & Boat Building									
Nondurable Goods							7,100	7,100	7,000
Food Manufacturing									
Paper Manufacturing									
Petroleum & Coal Products Mfg. & Chemical Mfg.							6,600	6,600	6,400
Petroleum & Coal Products Manufacturing									
Chemical Manufacturing									
Basic Chemical Manufacturing									
Service-Providing	154,500	154,900	154,300	117,000	117,700	116,900	74,400	73,900	71,700
Private Service-Providing	118,800	119,100	118,500	99,700	99,600	99,300	58,600	58,100	54,700
Trade, Transportation, & Utilities	33,400	33,900	33,300	29,000	29,000	28,700	16,600	16,500	16,200
Wholesale Trade	6,500	6,600	6,500	7,700	7,600	7,500			
Merchant Wholesalers, Durable Goods									
Merchant Wholesalers, Nondurable Goods									
Retail Trade	20,600	21,000	20,700	17,400	17,500	17,400	10,100	10,200	10,100
Clothing & Clothing Accessories Stores, General Merchandise							3,600	3,400	3,400
Motor Vehicle & Parts Dealers									
Building Material & Garden Equipment & Supplies Dealers									
Food & Beverage Stores									
Grocery Stores									
Health & Personal Care Stores									
Gasoline Stations									
Clothing and Clothing Accessories Stores									
General Merchandise Stores	4,600	4,600	4,500	3,700	3,700	3,500			
Department Stores									
Transportation, Warehousing, & Utilities	6,300	6,300	6,100	3,900	3,900	3,800			
Transportation and Warehousing									
Truck Transportation									
Support Activities for Transportation									
Information	4,900	4,700	4,900	2,700	2,700	2,700			
Telecommunications									
Financial Activities	7,300	7,100	7,000	8,300	8,300	8,400			
Finance & Insurance									
Credit Intermediation & Related Activities									
Depository Credit Intermediation									
Insurance Carriers & Related Activities									
Real Estate & Rental & Leasing									
Professional & Business Services	16,400	16,500	16,500	17,200	17,100	17,400	6,800	6,800	6,900
Professional, Scientific, & Technical Services				8,200	8,100	7,900			
Legal Services									
Accounting, Tax Preparation, Bookkeeping & Payroll Services									
Architectural, Engineering, & Related Services									
Management of Companies & Enterprises									
Admin. & Support & Waste Mgmt. & Remediation Serv.	9,900	9,900	10,000						
Administrative & Support Services									
Employment Services									
Services to Buildings & Dwellings									
Education & Health Services	26,300	26,400	26,300	22,300	22,300	22,000			
Educational Services									
Colleges, Universities, & Professional Schools									
Health Care & Social Assistance	25,500	25,500	24,900	20,400	20,300	19,900			
Ambulatory Health Care Services									
Offices of Physicians									
Home Health Care Services									
Hospitals	9,800	9,700	9,700	5,300	5,300	5,400	3,500	3,500	3,500
Nursing & Residential Care Facilities									
Nursing Care Facilities									
Social Assistance									
Leisure & Hospitality	22,300	22,400	22,400	15,300	15,400	15,200	12,000	12,000	11,600
Arts, Entertainment, & Recreation	5,800	5,800	6,200						
Amusement, Gambling, & Recreation Industries	5,500	5,600	5,800						
Gambling Industries	4,300	4,300	4,500						
Accommodation & Food Services	16,500	16,600	16,200	13,300	13,400	13,200	10,500	10,500	10,200
Accommodation									
Food Services & Drinking Places	13,500	13,600	13,300	12,300	12,400	12,200			
Other Services	8,200	8,100	8,100	4,900	4,800	4,900			
Repair & Maintenance									
Automotive Repair & Maintenance									
Personal & Laundry Services									
Government	35,700	35,800	35,800	17,300	18,100	17,600	15,800	15,800	17,000
Federal Government	4,800	4,800	5,100	1,100	1,100	1,400	600	600	900
State Government	11,200	11,300	10,600	5,100	6,000	5,000	3,800	4,100	4,000
Local Government	19,700	19,700	20,100	11,100	11,000	11,200	11,400	11,100	12,100

Not Seasonally Adjusted	MONROE MSA			HOUMA-BAYOU CANE- THIBODAU MSA			ALEXANDRIA MSA		
	PREL	REV	REV	PREL	REV	REV	PREL	REV	REV
	JUNE 2011	MAY 2011	JUNE 2010	JUNE 2011	MAY 2011	JUNE 2010	JUNE 2011	MAY 2011	JUNE 2010
Total Nonfarm	75,700	76,200	75,800	94,600	95,000	92,800	66,500	65,100	63,600
Total Private	61,700	61,600	61,300	81,000	81,100	78,300	51,800	50,100	48,400
Goods-Producing	10,500	10,500	10,500	20,500	20,500	19,900	8,600	8,500	8,200
Mining & Logging				5,700	5,700	5,900			
Oil & Gas Extraction									
Crude Petroleum & Natural Gas Extraction									
Support Activities for Mining				4,800	4,800	5,000			
Drilling Oil & Gas Wells									
Construction				6,000	5,900	5,300			
Construction of Buildings									
Residential Building Construction									
Nonresidential Building Construction									
Heavy & Civil Engineering Construction									
Utility System Construction									
Specialty Trade Contractors									
Manufacturing	7,000	7,000	6,800						
Durable Goods									
Transportation Equipment Manufacturing									
Ship & Boat Building									
Nondurable Goods	5,200	5,200	5,000						
Food Manufacturing									
Paper Manufacturing									
Petroleum & Coal Products Mfg. & Chemical Mfg.									
Petroleum & Coal Products Manufacturing									
Chemical Manufacturing									
Basic Chemical Manufacturing									
Service-Providing	65,200	65,700	65,300	74,100	74,500	72,900	57,900	56,600	55,400
Private Service-Providing	51,200	51,100	50,800	60,500	60,600	58,400	43,200	41,600	40,200
Trade, Transportation, & Utilities	13,800	13,800	13,800	25,300	25,100	23,800	11,600	11,600	11,500
Wholesale Trade									
Merchant Wholesalers, Durable Goods									
Merchant Wholesalers, Nondurable Goods									
Retail Trade	9,500	9,500	9,500	10,800	10,800	10,700	7,900	7,900	7,700
Clothing & Clothing Accessories Stores, General Merchandise	3,400	3,300	3,400						
Motor Vehicle & Parts Dealers									
Building Material & Garden Equipment & Supplies Dealers									
Food & Beverage Stores									
Grocery Stores									
Health & Personal Care Stores									
Gasoline Stations									
Clothing and Clothing Accessories Stores									
General Merchandise Stores									
Department Stores									
Transportation, Warehousing, & Utilities									
Transportation and Warehousing									
Truck Transportation									
Support Activities for Transportation				4,500	4,500	4,400			
Information									
Telecommunications									
Financial Activities									
Finance & Insurance									
Credit Intermediation & Related Activities									
Depository Credit Intermediation									
Insurance Carriers & Related Activities									
Real Estate & Rental & Leasing									
Professional & Business Services	7,300	7,200	7,100						
Professional, Scientific, & Technical Services									
Legal Services									
Accounting, Tax Preparation, Bookkeeping & Payroll Services									
Architectural, Engineering, & Related Services									
Management of Companies & Enterprises									
Admin. & Support & Waste Mgmt. & Remediation Serv.									
Administrative & Support Services				5,500	5,200	4,500			
Employment Services				3,800	3,600	2,900			
Services to Buildings & Dwellings									
Education & Health Services	13,200	13,300	12,700						
Educational Services									
Colleges, Universities, & Professional Schools									
Health Care & Social Assistance									
Ambulatory Health Care Services									
Offices of Physicians									
Home Health Care Services									
Hospitals	3,600	3,500	3,500				4,400	4,400	4,100
Nursing & Residential Care Facilities									
Nursing Care Facilities									
Social Assistance									
Leisure & Hospitality	7,100	7,000	7,100	7,800	7,800	7,500			
Arts, Entertainment, & Recreation									
Amusement, Gambling, & Recreation Industries									
Gambling Industries									
Accommodation & Food Services									
Accommodation									
Food Services & Drinking Places									
Other Services									
Repair & Maintenance									
Automotive Repair & Maintenance									
Personal & Laundry Services									
Government	14,000	14,600	14,500	13,600	13,900	14,500	14,700	15,000	15,200
Federal Government	600	600	900	400	400	900	2,900	3,000	3,000
State Government	4,000	4,700	4,100	2,800	3,300	2,800	4,500	4,600	4,800
Local Government	9,400	9,300	9,500	10,400	10,200	10,800	7,300	7,400	7,400



## CIVILIAN LABOR FORCE (Not Seasonally Adjusted)

Area	Preliminary June 2011			Revised May 2011			Revised June 2010		
	Employed	Unemployed	Rate	Employed	Unemployed	Rate	Employed	Unemployed	Rate
<b>UNITED STATES</b>	<b>140,129,000</b>	<b>14,409,000</b>	<b>9.3</b>	<b>140,028,000</b>	<b>13,421,000</b>	<b>8.7</b>	<b>139,882,000</b>	<b>14,885,000</b>	<b>9.6</b>
<b>LOUISIANA</b>	<b>1,902,454</b>	<b>167,517</b>	<b>8.1</b>	<b>1,891,131</b>	<b>166,203</b>	<b>8.1</b>	<b>1,939,624</b>	<b>176,371</b>	<b>8.3</b>
<b>ALEXANDRIA MSA</b>	<b>65,219</b>	<b>5,506</b>	<b>7.8</b>	<b>63,570</b>	<b>5,296</b>	<b>7.7</b>	<b>64,550</b>	<b>5,670</b>	<b>8.1</b>
Grant	8,162	745	8.4	7,956	686	7.9	8,078	845	9.5
Rapides	57,057	4,761	7.7	55,614	4,610	7.7	56,472	4,825	7.9
<b>BATON ROUGE MSA</b>	<b>343,969</b>	<b>31,725</b>	<b>8.4</b>	<b>342,101</b>	<b>31,149</b>	<b>8.3</b>	<b>352,453</b>	<b>32,748</b>	<b>8.5</b>
Ascension	47,087	3,857	7.6	46,831	3,962	7.8	48,248	4,325	8.2
East Baton Rouge	198,671	18,122	8.4	197,592	17,564	8.2	203,571	18,192	8.2
East Feliciana	7,307	733	9.1	7,267	704	8.8	7,487	777	9.4
Iberville	10,931	1,439	11.6	10,872	1,422	11.6	11,201	1,434	11.3
Livingston	53,784	4,636	7.9	53,492	4,655	8.0	55,111	4,919	8.2
Pointe Coupee	8,605	957	10.0	8,558	931	9.8	8,817	951	9.7
St. Helena	3,666	633	14.7	3,646	557	13.3	3,757	664	15.0
West Baton Rouge	9,655	888	8.4	9,603	879	8.4	9,893	1,026	9.4
West Feliciana	4,263	459	9.7	4,239	475	10.1	4,368	460	9.5
<b>HOUMA-BAYOU CANE- THIBODAUX MSA</b>	<b>97,248</b>	<b>5,895</b>	<b>5.7</b>	<b>97,086</b>	<b>6,130</b>	<b>5.9</b>	<b>98,305</b>	<b>6,265</b>	<b>6.0</b>
Lafourche	45,920	2,835	5.8	45,843	2,923	6.0	46,419	2,876	5.8
Terrebonne	51,328	3,060	5.6	51,243	3,207	5.9	51,886	3,389	6.1
<b>LAFAYETTE MSA</b>	<b>126,635</b>	<b>8,502</b>	<b>6.3</b>	<b>126,333</b>	<b>8,639</b>	<b>6.4</b>	<b>129,727</b>	<b>9,117</b>	<b>6.6</b>
Lafayette	104,714	6,705	6.0	104,464	6,894	6.2	107,270	7,152	6.3
St. Martin	21,921	1,797	7.6	21,869	1,745	7.4	22,457	1,965	8.0
<b>LAKE CHARLES MSA</b>	<b>90,348</b>	<b>6,702</b>	<b>6.9</b>	<b>88,991</b>	<b>6,941</b>	<b>7.2</b>	<b>89,698</b>	<b>7,579</b>	<b>7.8</b>
Calcasieu	87,379	6,493	6.9	86,066	6,750	7.3	86,750	7,353	7.8
Cameron	2,969	209	6.6	2,925	191	6.1	2,948	226	7.1
<b>MONROE MSA</b>	<b>73,415</b>	<b>6,817</b>	<b>8.5</b>	<b>73,422</b>	<b>6,750</b>	<b>8.4</b>	<b>75,535</b>	<b>7,308</b>	<b>8.8</b>
Ouachita	64,447	5,992	8.5	64,453	5,898	8.4	66,308	6,336	8.7
Union	8,968	825	8.4	8,969	852	8.7	9,227	972	9.5
<b>NEW ORLEANS-METairie- KENNER MSA</b>	<b>499,542</b>	<b>43,405</b>	<b>8.0</b>	<b>496,781</b>	<b>43,197</b>	<b>8.0</b>	<b>506,150</b>	<b>45,448</b>	<b>8.2</b>
Jefferson	197,916	15,759	7.4	196,822	16,167	7.6	200,534	16,699	7.7
New Orleans City/Orleans	134,336	14,367	9.7	133,593	13,675	9.3	136,113	14,832	9.8
Plaquemines	7,459	647	8.0	7,418	687	8.5	7,558	567	7.0
St. Bernard	16,957	1,498	8.1	16,863	1,521	8.3	17,181	1,419	7.6
St. Charles	22,202	1,925	8.0	22,079	1,827	7.6	22,496	2,088	8.5
St. John Baptist	18,700	2,169	10.4	18,596	2,130	10.3	18,947	2,458	11.5
St. Tammany	101,973	7,039	6.5	101,409	7,190	6.6	103,322	7,384	6.7
<b>SHREVEPORT-BOSSIER CITY MSA</b>	<b>173,409</b>	<b>13,576</b>	<b>7.3</b>	<b>172,534</b>	<b>13,555</b>	<b>7.3</b>	<b>175,948</b>	<b>14,624</b>	<b>7.7</b>
Bossier	51,433	3,418	6.2	51,174	3,475	6.4	52,186	3,485	6.3
Caddo	111,343	9,235	7.7	110,781	9,118	7.6	112,973	10,088	8.2
De Soto	10,633	923	8.0	10,580	962	8.3	10,789	1,052	8.9
<b>NON-MSA PARISHES</b>									
Acadia (Crowley) <sup>1</sup>	23,838	1,749	6.8	23,644	1,799	7.1	24,801	1,982	7.4
Allen	7,813	953	10.9	7,729	950	10.9	7,907	1,089	12.1
Assumption (Pierre Part) <sup>1</sup>	9,073	1,232	12.0	9,031	1,252	12.2	9,371	1,196	11.3
Avoyelles	14,621	1,558	9.6	14,512	1,546	9.6	15,438	1,539	9.1
Beauregard (DeRidder) <sup>1</sup>	13,351	1,226	8.4	13,404	1,202	8.2	13,301	1,207	8.3
Bienville	5,758	627	9.8	5,724	622	9.8	5,944	627	9.5
Caldwell	4,029	439	9.8	4,028	456	10.2	4,089	498	10.9
Catahoula	3,770	469	11.1	3,786	457	10.8	3,940	466	10.6
Claiborne	5,741	642	10.1	5,764	633	9.9	6,026	673	10.0
Concordia (Natchez, MS-LA) <sup>1</sup>	6,355	939	12.9	6,461	888	12.1	6,606	951	12.6
East Carroll	2,230	490	18.0	2,268	460	16.9	2,489	515	17.1
Evangeline	11,373	1,222	9.7	11,254	1,179	9.5	11,755	1,259	9.7
Franklin	6,695	962	12.6	6,706	947	12.4	7,128	967	11.9
Iberia (New Iberia) <sup>1</sup>	30,780	2,586	7.8	30,250	2,613	8.0	31,117	2,927	8.6
Jackson (Ruston) <sup>1</sup>	5,929	532	8.2	5,932	555	8.6	6,013	501	7.7
Jefferson Davis (Jennings) <sup>1</sup>	13,432	969	6.7	13,316	957	6.7	13,968	1,080	7.2
La Salle	6,586	431	6.1	6,506	425	6.1	6,565	457	6.5
Lincoln (Ruston) <sup>1</sup>	17,611	1,976	10.1	17,618	1,823	9.4	17,858	1,997	10.1
Madison (Tallulah) <sup>1</sup>	4,061	561	12.1	4,051	547	11.9	4,199	554	11.7
Morehouse (Bastrop) <sup>1</sup>	9,225	1,605	14.8	9,275	1,606	14.8	9,933	1,789	15.3
Natchitoches (Natchitoches) <sup>1</sup>	15,154	1,688	10.0	15,161	1,486	8.9	16,060	1,581	9.0
Red River	3,270	347	9.6	3,283	330	9.1	3,408	355	9.4
Richland	8,164	1,001	10.9	8,169	990	10.8	8,348	1,004	10.7
Sabine	8,715	689	7.3	8,737	699	7.4	8,931	733	7.6
St. James	8,178	1,259	13.3	8,100	1,199	12.9	8,480	1,254	12.9
St. Landry (Opelousas, Eunice) <sup>1</sup>	35,210	3,400	8.8	34,836	3,422	8.9	36,031	3,616	9.1
St. Mary (Morgan City) <sup>1</sup>	20,567	2,253	9.9	20,177	2,275	10.1	21,075	2,375	10.1
Tangipahoa (Hammond) <sup>1</sup>	47,338	5,250	10.0	47,146	5,059	9.7	49,411	5,622	10.2
Tensas	1,475	274	15.7	1,538	276	15.2	1,667	329	16.5
Vermilion (Abbeville) <sup>1</sup>	22,164	1,661	7.0	22,029	1,727	7.3	23,006	1,943	7.8
Vernon (Fort Polk South) <sup>1</sup>	19,778	1,793	8.3	19,584	1,670	7.9	19,678	1,551	7.3
Washington (Bogalusa) <sup>1</sup>	13,069	1,652	11.2	13,147	1,612	10.9	14,227	1,800	11.2
Webster (Mindon) <sup>1</sup>	18,057	1,694	8.6	17,846	1,631	8.4	18,747	1,812	8.8
West Carroll	3,333	686	17.1	3,373	685	16.9	3,723	760	17.0
Winn	5,925	573	8.8	5,930	569	8.8	6,019	607	9.2

<sup>1</sup>In addition to the eight (8) Metropolitan Statistical Areas (MSAs) in Louisiana, there are seventeen (17) Micropolitan Statistical Areas (MCs): Jackson and Lincoln Parishes combine to constitute one MC area. Civilian Labor Force can be derived by adding employed and unemployed. For related information or data, please visit: [www.bls.gov/lau/home.htm](http://www.bls.gov/lau/home.htm).

**LOUISIANA - PRIVATE EMPLOYMENT (Not Seasonally Adjusted)**

	Avg. Weekly Earnings (\$)			Avg. Weekly Hours			Avg. Hourly Earnings (\$)		
	JUNE	MAY	JUNE	JUNE	MAY	JUNE	JUNE	MAY	JUNE
	2011	2011	2010	2011	2011	2010	2011	2011	2010
Total Private	737.62	750.15	705.82	36.3	36.7	36.8	20.32	20.44	19.18
Goods-Producing	1,013.88	1,019.01	981.98	42.0	42.3	42.9	24.14	24.09	22.89
Private Service-Providing	666.07	681.64	633.60	34.8	35.3	35.2	19.14	19.31	18.00
Construction	920.22	938.74	868.56	42.0	42.4	42.0	21.91	22.14	20.68
Manufacturing	1,020.08	1,020.10	1,008.57	41.0	41.1	42.7	24.88	24.82	23.62
Trade, Transportation, and Utilities	679.56	703.84	656.87	37.4	37.8	37.6	18.17	18.62	17.47
Financial Activities	755.71	741.08	682.20	36.9	38.8	36.0	20.48	19.10	18.95
Professional and Business Services	953.65	987.23	922.35	39.1	39.6	39.0	24.39	24.93	23.65
Education and Health Services	611.61	607.56	545.76	32.9	33.2	32.7	18.59	18.30	16.69
Leisure and Hospitality	317.74	328.94	328.16	26.5	26.7	27.6	11.99	12.32	11.89

**METROPOLITAN STATISTICAL AREA (MSA) PRIVATE EMPLOYMENT (Not Seasonally Adjusted)**

	Avg. Weekly Earnings (\$)			Avg. Weekly Hours			Avg. Hourly Earnings (\$)		
	JUNE	MAY	JUNE	JUNE	MAY	JUNE	JUNE	MAY	JUNE
	2011	2011	2010	2011	2011	2010	2011	2011	2010
Alexandria	744.24	716.97	568.36	36.5	36.9	35.5	20.39	19.43	16.01
Baton Rouge	758.98	778.27	721.10	35.7	36.3	36.2	21.26	21.44	19.92
Houma	879.45	874.34	812.04	41.7	40.8	40.4	21.09	21.43	20.10
Lafayette	738.79	768.77	678.53	37.2	38.4	37.2	19.86	20.02	18.24
Lake Charles	852.26	843.88	764.03	39.9	39.6	37.6	21.36	21.31	20.32
Monroe	542.91	543.75	536.73	33.7	33.4	34.1	16.11	16.28	15.74
New Orleans	839.70	856.66	832.66	35.9	36.5	37.9	23.39	23.47	21.97
Shreveport	620.92	626.80	648.79	35.1	34.9	34.9	17.69	17.96	18.59

**AVERAGE HOURS AND EARNINGS FOR PRODUCTION WORKERS IN MANUFACTURING AND SELECTED NONMANUFACTURING INDUSTRIES (Not Seasonally Adjusted)**

	Avg. Weekly Earnings (\$)			Avg. Weekly Hours			Avg. Hourly Earnings (\$)		
	JUNE	MAY	JUNE	JUNE	MAY	JUNE	JUNE	MAY	JUNE
	2011	2011	2010	2011	2011	2010	2011	2011	2010
Louisiana									
Mining & Logging	1,090.15	1,064.80	970.36	44.1	44.0	41.7	24.72	24.20	23.27
Manufacturing	868.19	882.42	913.68	41.7	42.0	42.3	20.82	21.01	21.60
Durable Goods	900.21	897.60	866.84	43.3	42.5	42.1	20.79	21.12	20.59
Nondurable Goods	836.49	864.85	965.60	40.1	41.4	42.5	20.86	20.89	22.72
New Orleans MSA									
Ship and Boat Building	892.01	829.91	785.97	38.3	37.0	36.9	23.29	22.43	21.30

The 105,500 production workers in all manufacturing earned an average of \$868.19 per week in June 2011. Average weekly hours were 41.7, and average hourly earnings were \$20.82.

**LOUISIANA UNEMPLOYMENT INSURANCE by CLAIMANT'S PARISH of RESIDENCE**

**WEEK ENDING - June 18, 2011**

RLMA/PARISH	INITIAL CLAIMS	WEEKS CLAIMED	RLMA/PARISH	INITIAL CLAIMS	WEEKS CLAIMED	RLMA/PARISH	INITIAL CLAIMS	WEEKS CLAIMED
<b>RLMA 1</b>	<b>1,063</b>	<b>11,734</b>	<b>RLMA 4</b>	<b>444</b>	<b>5,148</b>	<b>RLMA 7</b>	<b>599</b>	<b>5,320</b>
JEFFERSON	398	4,500	ACADIA	28	330	BIENVILLE	21	167
ORLEANS	393	3,985	EVANGELINE	27	301	BOSSIER	67	774
PLAQUEMINES	16	163	IBERIA	60	636	CADDO	218	2,450
ST. BERNARD	1	3	LAFAYETTE	134	1,609	CLAIBORNE	13	151
ST. CHARLES	44	508	ST. LANDRY	82	874	DESOTO	17	204
ST. JAMES	21	427	ST. MARTIN	35	405	LINCOLN	46	519
ST. JOHN	41	659	ST. MARY	46	660	NATCHITOCHEs	134	391
ST. TAMMANY	149	1,489	VERMILION	32	333	RED RIVER	19	65
						SABINE	21	131
						WEBSTER	43	468
<b>RLMA 2</b>	<b>860</b>	<b>10,424</b>	<b>RLMA 5</b>	<b>207</b>	<b>2,280</b>	<b>RLMA 8</b>	<b>300</b>	<b>3,513</b>
ASCENSION	84	1,021	ALLEN	17	203	CALDWELL	12	92
E. BATON ROUGE	395	4,910	BEAUREGARD	32	336	EAST CARROLL	11	131
EAST FELICIANA	21	191	CALCASIEU	131	1,549	FRANKLIN	22	259
IBERVILLE	31	434	CAMERON	1	18	JACKSON	14	171
LIVINGSTON	97	1,251	JEFF. DAVIS	26	174	MADISON	16	156
POINTE COUPEE	22	266				MOREHOUSE	37	454
ST. HELENA	6	96	<b>RLMA 6</b>	<b>213</b>	<b>3,069</b>	OUACHITA	137	1,584
TANGIPAHOA	139	1,521	AVOYELLES	26	423	RICHLAND	19	288
WASHINGTON	30	392	CATAHOULA	8	118	TENSAS	1	77
W. BATON ROUGE	27	247	CONCORDIA	9	233	UNION	20	181
WEST FELICIANA	8	95	GRANT	14	184	WEST CARROLL	11	120
			LASALLE	4	83			
<b>RLMA 3</b>	<b>112</b>	<b>1,578</b>	RAPIDES	97	1,354			
ASSUMPTION	25	357	VERNON	45	559			
LAFOURCHE	47	588	WINN	10	115			
TERREBONNE	40	633						

RLMA = REGIONAL LABOR MARKET AREA

THE ABOVE FIGURES INCLUDE REGULAR UNEMPLOYMENT INSURANCE (UI), UNEMPLOYMENT CLAIMS for FEDERAL EMPLOYEES (UCFE), and UNEMPLOYMENT CLAIMS for EX-SERVICE MEMBERS (UCX) DATA ONLY.

## Labor Market Questions and Answers!

- **What new labor market products were added to the LWC Web site [www.laworks.net](http://www.laworks.net) since the last monthly bulletin release?**

Fourth Quarter 2010 Employment and Wages data have been added to the LWC Web site.

[www.laworks.net/LaborMarketInfo/LMI\\_WageData2002toPresent.asp?year=2010&qtr=4](http://www.laworks.net/LaborMarketInfo/LMI_WageData2002toPresent.asp?year=2010&qtr=4)

Web Navigation #1: LWC home page, Labor Market Information, Employment and Wages – Quarterly

Web Navigation #2: LWC home page, Labor Market Information, LOIS (Louisiana Occupational Information System), use the left-side menu under Historic Data Analysis and scroll over Employment and Wage Data, Industry Data, then select Quarterly Census of Employment and Wages (QCEW).

My Skills My Future Web resource link was also added to the LWC Web site.

[www.myskillsmyfuture.org/](http://www.myskillsmyfuture.org/)

Web Navigation: LWC home page, Labor Market Information, under LMI Resources select Labor Market Information Resource Links, under US Department of Labor – Employment and Training (ETA) select Career One Stop – My Skills My Future.

# Glossary & Technical Notes

**Average Hourly Earnings/Average Weekly Earnings/ Average Weekly Hours (CES/BLS)** - average total money earnings, in the survey week (i.e., the week that includes the twelfth of the month), of production workers plus nonsupervisory workers not in production, including overtime, paid vacation and sick leave.

**Civilian Labor Force** - that portion of the population, age sixteen or older, which is employed or unemployed and actively seeking employment during the reference week of the twelfth of the month.

**Employed** - the members of the labor force who worked for pay or profit, or had a job from which they were temporarily absent because of illness, vacation, labor dispute, or other reasons not reflecting a shortage of work, or who worked fifteen hours or more as unpaid workers in an enterprise operated by a member of the family.

**Unemployed** - the members of the labor force who did not work but were seeking work or were awaiting recall from layoffs or the beginning of a new job within thirty days.

**Unemployment Rate** - the number of unemployed persons expressed as a percentage of the labor force.

**Continued Claim** - each week claimed subsequent to the filing of the initial claim for a week of unemployment compensation.

**Current Employment Statistics (CES)** - estimates of nonfarm employment and production workers hours and earnings by industry. They are produced as part of a nationwide program, in cooperation with the Bureau of Labor Statistics (BLS), for the state and each metropolitan statistical area (MSA) from a sample of employing establishments.

**Current Population Survey (CPS)** - a monthly household survey of the U.S. population conducted for the Bureau of Labor Statistics (BLS) by the Bureau of Census, of 56,000 selected households. Respondents are interviewed to obtain information on the employment status of each household member age 16 and over, during the reference week of the twelfth.

**Durable Goods** - items with a normal life expectancy of three years or more. Automobiles, furniture, household appliances, and mobile homes are examples.

**Extended Layoff Event** - Fifty or more initial claims for unemployment insurance benefits from an establishment during a 5-week period, with at least 50 workers separated for more than 30 days.

**Initial Claims** - a new claim, filed to open a claim for unemployment compensation.

**Metropolitan Statistical Area (MSA)** - a geographical area comprised of a parish generally containing a central city (or twin cities) of 50,000 inhabitants or more and contiguous parishes that are socially and economically integrated with the central city.

**Micropolitan Statistical Area (MC)** - a geographical area comprised of a parish containing a central city of at least 10,000 but less than 50,000 inhabitants and contiguous parishes that are socially and economically integrated with the central city.

**NAICS (North American Industry Classification System)** - an industry classification system that groups establishments into industries based on the activities in which they are primarily engaged.

**Nonfarm Employment** - employment by place of work that does not include the self employed, unpaid family workers, domestics, or agriculture workers. All estimates of nonfarm employment in this publication are in cooperation with the U.S. Department of Labor Bureau of Labor Statistics and include all full-time and part-time workers who were employed during the pay period including the twelfth of the month.

**Nondurable Goods** - items that generally last for only a short period of time (less than three years). Food, beverages, apparel, and gasoline are common examples.

**Seasonally Adjusted** - monthly data that is adjusted to minimize the changes in any time series which result from normal annual occurrences such as Christmas, summer vacations, and weather patterns.

**Separation** - The release of persons from an employer as part of a mass layoff event. Such releases involve both persons subject to recall and those who are terminated by the establishment.

**Subsector** - refers to the three-digit NAICS code, which will fall under the particular sector. Example: If Manufacturing (31-33) is the industry sector, then Food manufacturing (311), Paper manufacturing (322), Chemical manufacturing (325), Transportation equipment manufacturing (336), are some of the subsectors of manufacturing.

**Supersector** - refers to these five categories: Total Nonfarm, Total Private, Goods-Producing, Service-Providing, and Private Service-Providing.

**Summary Industry Sector** - a combination of industry sectors. A summary sector may or may not be published. The summary industry sectors are Mining & Logging; Construction; Manufacturing; Trade, Transportation, & Utilities; Information; Financial Activities; Professional & Business Services; Education & Health Services; Leisure & Hospitality; Other Services; and Government.

**Industry Sector** - 20 industry sectors based on two-digit NAICS code. They are Agriculture, Forestry, Fishing and Hunting (11), Mining (21), Utilities (22), Construction (23), Manufacturing (31-33), Wholesale Trade (42), Retail Trade (44-45), Transportation and Warehousing (48-49), Information (51), Finance and Insurance (52), Real Estate and Rental and Leasing (53), Professional and Technical Services (54), Management of Companies and Enterprises (55), Administrative and Waste Services (56), Educational Services (61), Health Care and Social Assistance (62), Arts, Entertainment, and Recreation (71), Accommodation and Food Services (72), Other Services (81), and Public Administration (92).

---

## Constraints of the monthly civilian labor force and nonfarm employment estimates:

The civilian labor force estimates are derived by a monthly survey of approximately 750 households throughout Louisiana following the Bureau of Labor Statistics (BLS) methodology. The US Census Bureau conducts the survey by calling randomly selected households and providing BLS with survey results. Households are asked for the number of residents who are sixteen and over and whether they were working or actively looking for work during the week of the twelfth of the month. Responses to these questions become part of the formula to determine the number of people employed and the number of individuals unemployed for the state, MSAs, and each parish every month.

The nonfarm employment estimates are derived from responses received from the monthly BLS survey of 2,757 businesses across the state surveyed directly by this agency, and an additional 2,500 businesses that respond directly to BLS with their employment data. Responses capture employment activity during the twelfth of each month. This survey relies on responses from these businesses to produce industry employment levels for the state and all metropolitan statistical areas.

Both data sets are comparable with estimates for the U.S., all 50 states, and 270 metropolitan areas across the U.S.

## LABOR MARKET INFORMATION WEB LINKS

### **Civilian Labor Force - LAUS (Local Area Unemployment Statistics) –**

#### **Employment, Unemployment and Unemployment Insurance Rate**

LA <http://www.voshost.com/altentry.asp?action=lmiguest>

Left menu: Historical Data Analysis – Employment and Wage Data – Labor Force Data – Labor Force Employment and Unemployment (LAUS)

States <http://data.bls.gov/cgi-bin/dsrv?la>

US <http://data.bls.gov/pdq/querytool.jsp?survey=ln>

#### **Consumer Price Index (US) <http://data.bls.gov/cgi-bin/surveymost?cu>**

### **Download Louisiana Workforce Commission’s Labor Market Information Products**

LA [http://www.laworks.net/Downloads/Downloads\\_LMI.asp](http://www.laworks.net/Downloads/Downloads_LMI.asp)

### **Employment and Wage Data – Quarterly Census of Employment and Wages (QCEW)**

LA <http://www.voshost.com/altentry.asp?action=lmiguest>

Left menu: Historical Data Analysis – Employment and Wage Data – Industry Data – Quarterly Census of Employment and Wages (QCEW)

States & US <http://data.bls.gov/cgi-bin/dsrv?en>

### **NAICS (North American Industry Classification System) Codes Look-Up Table**

<http://www.census.gov/eos/www/naics>

### **Nonfarm Employment, Hours and Earnings - CES (Current Employment Statistics)**

LA <http://www.voshost.com/altentry.asp?action=lmiguest>

Left menu: Historical Data Analysis – Employment and Wage Data – Industry Data – Current Employment Statistics (CES) – select Show Earnings Data under table

States <http://data.bls.gov/cgi-bin/dsrv?sm>

US <http://data.bls.gov/cgi-bin/dsrv?ce>

### **Unemployment Insurance Claimants Data (by Occupation) - Unemployment Insurance (UI)**

LA <http://www.voshost.com/altentry.asp?action=lmiguest>

Left menu: Historical Data Analysis – Employment and Wage Data – Labor Force Data – Unemployment Insurance Claimants

### **Unemployment Insurance Claims Data (by Region, Parish, Industry) - UI**

LA [http://www.laworks.net/LaborMarketInfo/LMI\\_UIClaimsReportMenu.asp](http://www.laworks.net/LaborMarketInfo/LMI_UIClaimsReportMenu.asp)

States & US <http://ows.doleta.gov/unemploy/claims.asp>

### **Unemployment Rates for all States - LAUS**

States <http://www.bls.gov/web/laumstrk.htm>



Office of Occupational Information Services  
Research & Statistics Division  
Post Office Box 94094  
Baton Rouge, LA 70804-9094

Data for: 6/2011



**Workforce At A Glance** is published monthly by the Louisiana Workforce Commission (LWC). The material in this publication is not copyrighted and may be reproduced; however, the LWC would appreciate credit for the material used and a copy of the reprint.

**LMI Staff:**

Patty Granier, Manager  
Ramona Robichaux, Supervisor  
Ronald Smith, Layout and Design  
Benjamin Caldwell, Karen Clark, Jonathan Helis,  
and Tequila Perkins

**Contributors:**

Natalie Foster-Lawrence, Mark Jones, Tara Robinson,  
Helen Hilliard, and Karen Clark

**Contact Us:**

Phone (225) 342-3141; Fax (225) 219-7759  
Toll Free (888) 302-7662;  
Email [OOIS@Idol.state.la.us](mailto:OOIS@Idol.state.la.us)

**Bobby Jindal, Governor**  
State of Louisiana

**Curt Eysink, Executive Director**  
Louisiana Workforce Commission

Raj Jindal,  
Information Technology Director

Visit our Web site:  
[www.laworks.net](http://www.laworks.net)