

Louisiana Workforce

at a glance

Release Date: Mar. 13, 2017

Data For: January 2017

<http://www.laworks.net>

In This Issue

- 2 Economic Comparison
- 3-4 NSA State & Area Employment
- 5-8 Data Trends (Graphs)
- 9-15 Nonfarm Employment
- 16-17 Unemployment Rates & Civilian Labor Force
- 18 Average Hours & Earnings
- 19 Over-The-Year Changes in Average Hours & Earnings
- 20-21 Glossary, Data Constraints, Downloads & Web Links

Louisiana's seasonally adjusted nonfarm employment was estimated at 1,975,000 for January 2017. The figure represents an increase of 6,000 jobs over the month but a decrease of 7,500 jobs over the year. This is the 17th consecutive month with an over-the-year loss. Private sector employment was estimated at 1,650,700, an increase of 4,800 jobs over the month but a loss of 5,200 jobs over the year. This shows 17 consecutive months with an over-the-year loss.

Over the month the largest gain was seen in the construction sector, which added 7,600 jobs, its largest monthly gain in series history. Manufacturing rose by 2,000 jobs as non-durable manufacturing gained 1,400 jobs. Education and health services rose by 1,800 jobs, with the educational services subsector increasing by 1,000. Government added 1,200 jobs from December with local government rising by 1,800 jobs. The mining and logging sector added 200 jobs over the month, its first monthly increase since October 2014, while financial activities showed no change. The largest decline over the month occurred in the professional and business services sector, which lost 1,800 jobs. The professional, scientific and technical services subsector lost 1,600 of those jobs. Leisure and hospitality fell by 1,700 jobs, its largest monthly loss for the month of January since 1998. Both the information sector and the other services sector lost 1,300 jobs from December. Information has lost jobs over the month in January for four straight years. Trade, transportation, and utilities lost 700 jobs, its first January decline since 2009.

Over the year the largest gain was seen in the construction sector, which added 9,900 jobs for a new series employment high of 150,500. The education and health services sector rose by 7,500 jobs over the year, with the health care and social assistance subsector gaining 5,200 jobs. The education and health services employment level of 314,900 is also a series high. Other services added 300 jobs for its fourth straight over-the-year increase. The largest decline over the year was seen in the mining and logging sector which fell by 7,400 jobs. The series has lost jobs over the year for 25 straight months. Trade, transportation, and utilities lost 4,000 jobs for its 15th straight decline over the year. Manufacturing fell by 3,900 jobs, its 23rd straight over-the-year loss, as durable goods manufacturing declined by 6,000 jobs. Leisure and hospitality showed 3,100 fewer jobs than last year, its first over-the-year loss in January since 2010. Information decreased by 2,900 jobs for its 12th consecutive over-the-year loss. Government fell by 2,300 jobs with local government losing 3,100 jobs. Professional and business services fell by 1,400 jobs as the professional, scientific, and technical services subsector lost 5,100 jobs. Financial activities showed a slight decrease of 200 jobs and has lost jobs over the year for 19 straight months.

The January 2017 preliminary seasonally adjusted unemployment rate for Louisiana decreased to 5.9 percent from the December 2016 revised rate of 6.0 percent. The national unemployment rate for January 2017 increased to 4.8 from the December rate of 4.7 percent. Total unemployment in the state for January was 123,116. The state civilian labor force decreased to 2,099,558, with an increase in total employment to 1,976,442.

Seasonally Adjusted	United States	Louisiana
Civilian Labor Force	JAN 2017	JAN 2017
Labor Force	159,716,000	2,099,558
Employed	152,081,000	1,976,442
Unemployed	7,635,000	123,116
Unemployment Rate	4.8	5.9
Nonfarm Wage and Salary Employment	JAN 2017	JAN 2017
Total Nonfarm	145,554,000	1,975,000
Mining and Logging	672,000	34,900
Construction	6,809,000	150,500
Manufacturing	12,341,000	134,900
Trade, Transportation, and Utilities	27,444,000	387,000
Information	2,767,000	22,300
Financial Activities	8,397,000	92,300
Professional and Business Services	20,451,000	209,500
Education and Health Services	22,890,000	314,900
Leisure and Hospitality	15,790,000	228,600
Other Services	5,717,000	75,800
Government	22,276,000	324,300

All Employees Average Hours & Earnings

(Not Seasonally Adjusted)

Construction	JAN 2017 United States	JAN 2017 Louisiana
Average Weekly Earnings	\$ 1,077.09	\$ 1,112.97
Average Weekly Hours	37.7	41.7
Average Hourly Wages	\$ 28.57	\$ 26.69
Manufacturing		
Average Weekly Earnings	\$ 1,076.31	\$ 1,044.83
Average Weekly Hours	40.6	41.2
Average Hourly Wages	\$ 26.51	\$ 25.36

Louisiana Unemployment Insurance Activities

Claims	JAN 2017
Initial New & Renewals	11,112
Continued Weekly Intrastate Only	62,876
Insured Unemployment Rate	1.2

United States Consumer Price Index

	JAN 2017
All Urban Consumers	242.8



The civilian labor force and nonfarm **estimates** are prepared according to Bureau of Labor Statistics (BLS) methodology and are comparable

Economic Comparison

Seasonally Adjusted	United States			Louisiana		
Civilian Labor Force	JAN 2017	DEC 2016	JAN 2016	JAN 2017	DEC 2016	JAN 2016
Labor Force	159,716,000	159,640,000	158,362,000	2,099,558	2,100,414	2,140,755
Employed	152,081,000	152,111,000	150,533,000	1,976,442	1,974,499	2,008,483
Unemployed	7,635,000	7,529,000	7,829,000	123,116	125,915	132,272
Unemployment Rate	4.8	4.7	4.9	5.9	6.0	6.2
Nonfarm Wage and Salary Employment	JAN 2017	DEC 2016	JAN 2016	JAN 2017	DEC 2016	JAN 2016
Total Nonfarm	145,554,000	145,327,000	143,211,000	1,975,000	1,969,000	1,982,500
Mining and Logging	672,000	668,000	728,000	34,900	34,700	42,300
Construction	6,809,000	6,773,000	6,639,000	150,500	142,900	140,600
Manufacturing	12,341,000	12,336,000	12,387,000	134,900	132,900	138,800
Trade, Transportation, and Utilities	27,444,000	27,400,000	27,072,000	387,000	387,700	391,000
Information	2,767,000	2,764,000	2,763,000	22,300	23,600	25,200
Financial Activities	8,397,000	8,365,000	8,207,000	92,300	92,300	92,500
Professional and Business Services	20,451,000	20,412,000	19,877,000	209,500	211,300	210,900
Education and Health Services	22,890,000	22,866,000	22,334,000	314,900	313,100	307,400
Leisure and Hospitality	15,790,000	15,756,000	15,443,000	228,600	230,300	231,700
Other Services	5,717,000	5,701,000	5,647,000	75,800	77,100	75,500
Government	22,276,000	22,286,000	22,114,000	324,300	323,100	326,600
All Employees Average Hours & Earnings						
Construction	United States (Not Seasonally Adjusted)			Louisiana (Not Seasonally Adjusted)		
	JAN 2017	DEC 2016	JAN 2016	JAN 2017	DEC 2016	JAN 2016
Average Weekly Earnings	\$ 1,077.09	\$ 1,098.02	\$ 1,064.45	\$ 1,112.97	\$ 1,074.80	\$ 1,029.71
Average Weekly Hours	37.7	38.5	38.4	41.7	40.3	40.7
Average Hourly Wages	\$ 28.57	\$ 28.52	\$ 27.72	\$ 26.69	\$ 26.67	\$ 25.30
Manufacturing						
Average Weekly Earnings	\$ 1,076.31	\$ 1,081.58	\$ 1,043.01	\$ 1,044.83	\$ 1,077.76	\$ 1,103.76
Average Weekly Hours	40.6	41.0	40.6	41.2	42.1	42.0
Average Hourly Wages	\$ 26.51	\$ 26.38	\$ 25.69	\$ 25.36	\$ 25.60	\$ 26.28
Louisiana Unemployment Insurance Activities						
Claims		JAN 2017	DEC 2016	JAN 2016	% Change From	
Initial New & Renewals		11,112	8,748	12,393	DEC 2016	JAN 2016
Continued Weekly Intrastate Only		62,876	70,164	64,071	-10.4	-1.9
Insured Unemployment Rate*		1.2	1.3	1.2	-0.8	6.0
United States Consumer Price Index (Not Seasonally Adjusted)						
	Jan 2017	% Change From:		Dec 2016	% Change From:	
	Index	Prior Month	Prior Year	Index	Prior Month	Prior Year
All Urban Consumers	242.8	0.6	2.5	241.4	0.0	2.1

Not Seasonally Adjusted State and Area Employment

STATEWIDE

Louisiana's total nonfarm not seasonally adjusted employment was estimated at 1,952,500 for January 2017. The estimate represents a loss of 27,600 jobs over the month and a loss of 13,000 jobs from January 2016. The estimate shows 17 consecutive months with an over-the-year loss.

The total private employment figure was estimated at 1,630,500 in January 2017. Private sector employment showed an over-the-month decrease of 22,200 jobs and a loss of 10,200 jobs from January 2016. This shows 15 consecutive months with an over-the-year loss.

Over the month the largest increase was seen in the construction sector which added 2,500 jobs, its largest increase for January since 2006. The manufacturing sector added 100 jobs, its first gain in January in series history. Financial activities showed no change over the month. The largest decline over the month was seen in the trade, transportation and utilities sector, which fell by 11,200 jobs in its traditional post holidays decline. The series has averaged a decline of 13,000 jobs in January since 1990. The retail trade subsector fell by 6,900 jobs. Government lost 5,400 jobs over the month as state government fell by 6,000 with state universities on winter break. Leisure and hospitality fell by 4,400 jobs as food services and drinking places lost 3,600 jobs. The professional and business services sector lost 3,800 jobs from December and has lost jobs over the month in January for 14 consecutive years. Both the information sector and the education and health services sectors declined by 1,800 jobs. Educational services were responsible for 1,200 of the 1,800 jobs lost in education and health services. Other services lost 1,500 jobs, its largest over-the-month loss for January since 2010. Mining and logging lost 300 jobs, its sixth straight monthly loss and 26th loss in 27 months.

Construction also showed the largest over-the-year gain by adding 8,800 jobs from January 2016. The January estimate of 145,200 is 4th highest in series history. Education and health services added 5,700 jobs and has seen over-the-year gains every month beginning with October 2006. Other services added 100 jobs while financial activities showed no change. The largest decline over the year was seen in the mining and logging sector which lost 7,800 jobs. Mining and logging has lost jobs over the year for 25 straight months. Manufacturing fell by 4,900 jobs, with durable goods manufacturing losing 6,100 jobs. Manufacturing has lost jobs over the year for 23 straight months. Trade, transportation, and utilities fell by 4,300 jobs with the transportation, warehousing, and utilities subsector also losing 4,300 jobs. Leisure and hospitality declined by 3,800 as food services and drinking places showed 2,800 fewer jobs. Information showed its 12th straight annual loss in dropping 3,200 jobs. Government fell by 2,800 with the local government subsector losing 3,300 jobs. Finally, professional and business services showed a loss of 800 jobs for its 15th consecutive over-the-year loss.

ALEXANDRIA

Total nonfarm employment for the Alexandria MSA was estimated at 62,700 for January 2017. This estimate shows a loss of 600 jobs over the month and a loss of 800 jobs over the year. The MSA has dropped jobs over the year for six consecutive months. Retail trade lost 300 jobs over the month while government lost 300 jobs over the year.

BATON ROUGE

Total nonfarm employment for the Baton Rouge MSA was estimated at 402,600 for January 2017. The estimate shows a loss of 1,900 jobs over the month but an increase of 2,500 jobs over the year. Baton Rouge ended 2016 with six consecutive over-the-year losses after 66 months of gains. Over the month, construction added 2,000 jobs while government lost 1,600 jobs and trade, transportation, and utilities declined by 1,500. Over the year, construction added 1,600 jobs and leisure and hospitality rose by 1,200 jobs. Both the professional and business services sector and the education and health services sector added 700 jobs over the year.

HAMMOND

The Hammond MSA total nonfarm employment was estimated at 44,500 for January 2017. This figure shows a loss of 800 jobs over the month but a gain of 800 jobs over the year. Goods producing employment had no change over the month or over the year. Service providing employment lost 800 jobs over the month but gained 800 jobs over the year.

HOUMA

Total nonfarm employment in the Houma MSA was estimated at 85,200 for January 2017. This shows a loss of 1,800 jobs over the month and a decline of 6,600 jobs over the year. Trade, transportation, and utilities lost 1,000 jobs over the month and 3,100 jobs over the year. Mining and logging lost 1,400 jobs over the year, its 24th consecutive month with an over-the-year loss.

LAFAYETTE

Total nonfarm employment for the Lafayette MSA was estimated at 196,700 for January 2017. This represents a loss of 2,600 jobs over the month and a loss of 8,800 jobs over the year. The MSA has lost jobs over the year for 24 consecutive months. Over the month both the trade, transportation, and utilities sector and the government sector lost 800 jobs, while professional and business services lost 700 jobs. Over the year, mining and logging was down 3,100 jobs, its 25th consecutive month with an over-the-year loss. Professional and business services lost 1,500 jobs, its 23rd consecutive over-the-year loss. Manufacturing lost 1,400 jobs from last January, its 27th straight month with an over-the-year decline.

LAKE CHARLES

Total nonfarm employment for the Lake Charles MSA was estimated at 110,700 for January 2017. This shows a loss of 200 jobs over the month but a gain of 5,600 jobs over the year. It is the 67th consecutive month with an over-the-year increase. The construction sector added 600 jobs over the month. Construction also added 4,800 jobs over the year for its 16th consecutive month with an increase. Trade, transportation, and utilities added 800 jobs over the year.

MONROE

Total nonfarm employment for the Monroe MSA was estimated at 78,700 for January 2017. This shows a loss of 1,200 jobs over the month but an increase of 400 jobs over the year. Over the month, government fell by 700 jobs, seen entirely in state government. Professional and business services added 400 jobs over the year while government fell by 500 jobs.

NEW ORLEANS

Total nonfarm employment for the New Orleans MSA was estimated at 572,200 for January 2017. This shows a loss of 8,200 jobs over the month and 800 jobs over the year. Over the month, trade, transportation, and utilities lost 3,100 jobs as retail trade declined by 2,300 jobs. Education and health services lost 1,100 jobs from December while professional and business services fell by 1,000. Over the year, education and health services added 3,700 jobs. The health care and social assistance subsector accounted for 2,600 jobs of the over-the-year gain. Government lost 2,900 jobs over the year, with local government losing 2,100. Information fell by 1,900 jobs from last January. Mining and logging declined by 900 over the year while construction fell by 700 jobs.

SHREVEPORT

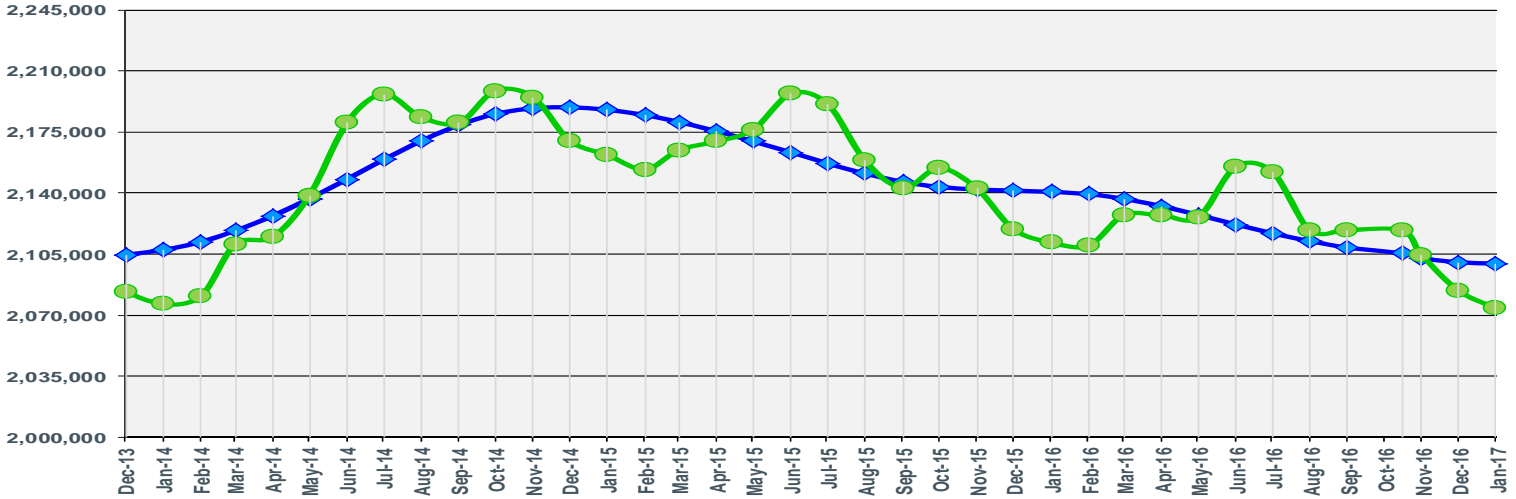
Total nonfarm employment for the Shreveport MSA was estimated at 178,600 for January 2017. This shows a loss of 2,300 jobs over the month and a loss of 3,100 jobs over the year. This is the 21st consecutive month with an over-the-year loss. Government lost 1,600 jobs over the year with local government losing 900 jobs. Mining and logging was down 600 jobs over the year.

January 2017

Seasonally Adjusted
 2,099,558
 Over the Month: -856
 Over the Year: -41,197

Louisiana Civilian Labor Force

Not Seasonally Adjusted
 2,073,964
 Over the Month: -10,248
 Over the Year: -37,658

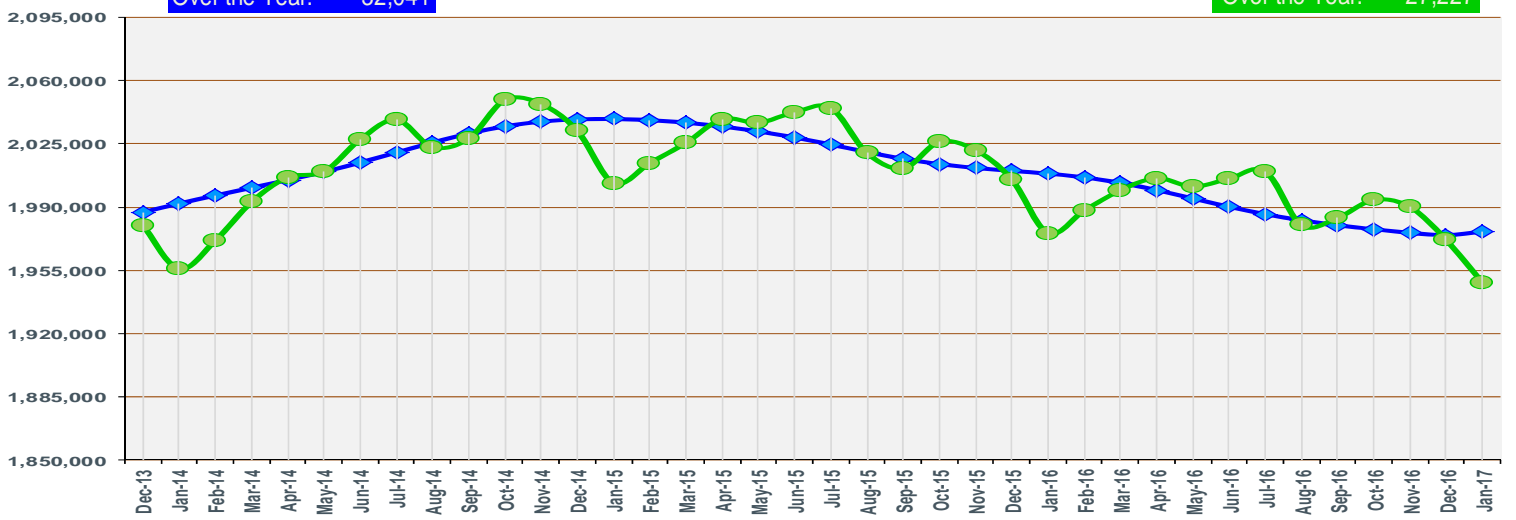
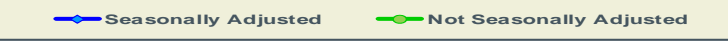


January 2017

Seasonally Adjusted
 1,976,442
 Over the Month: 1,943
 Over the Year: -32,041

Louisiana Civilian Labor Force Employment

Not Seasonally Adjusted
 1,948,261
 Over the Month: -23,515
 Over the Year: -27,227

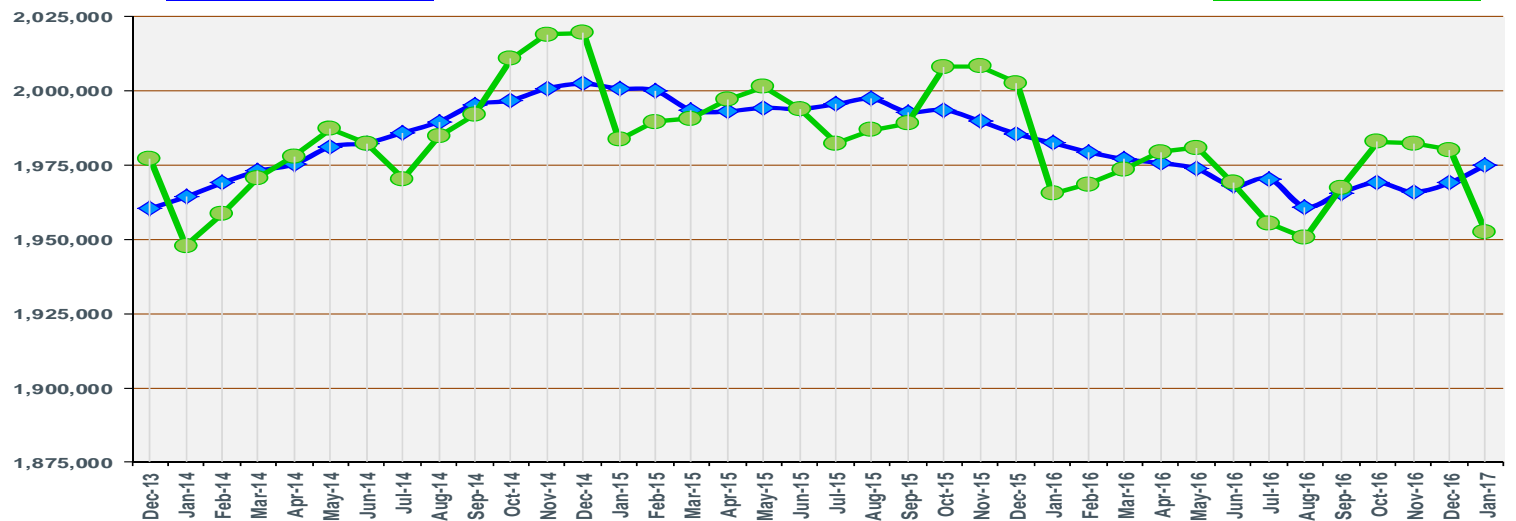
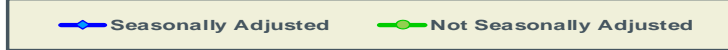


January 2017

Seasonally Adjusted
 1,975,000
 Over the Month: 6,000
 Over the Year: -7,500

Louisiana Nonfarm Employment

Not Seasonally Adjusted
 1,952,500
 Over the Month: -27,600
 Over the Year: -13,000



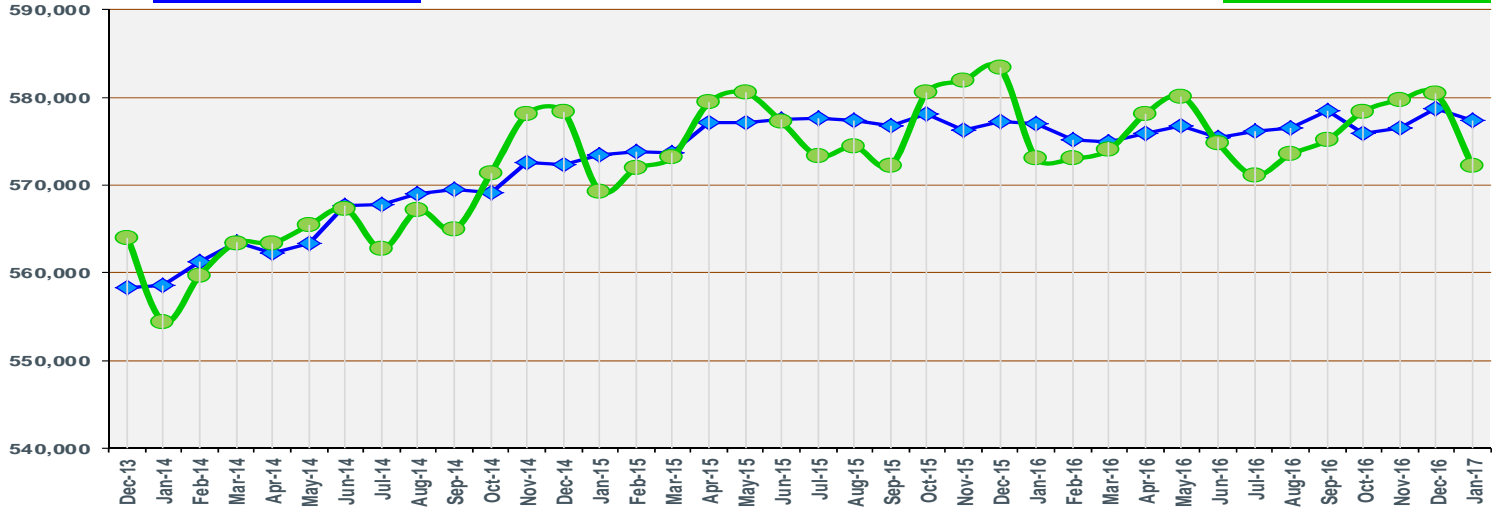
January
2017

Seasonally Adjusted
577,300
Over the Month: -1,400
Over the Year: 300

New Orleans MSA Nonfarm Employment

Seasonally Adjusted Not Seasonally Adjusted

Not Seasonally Adjusted
572,200
Over the Month: -8,200
Over the Year: -800



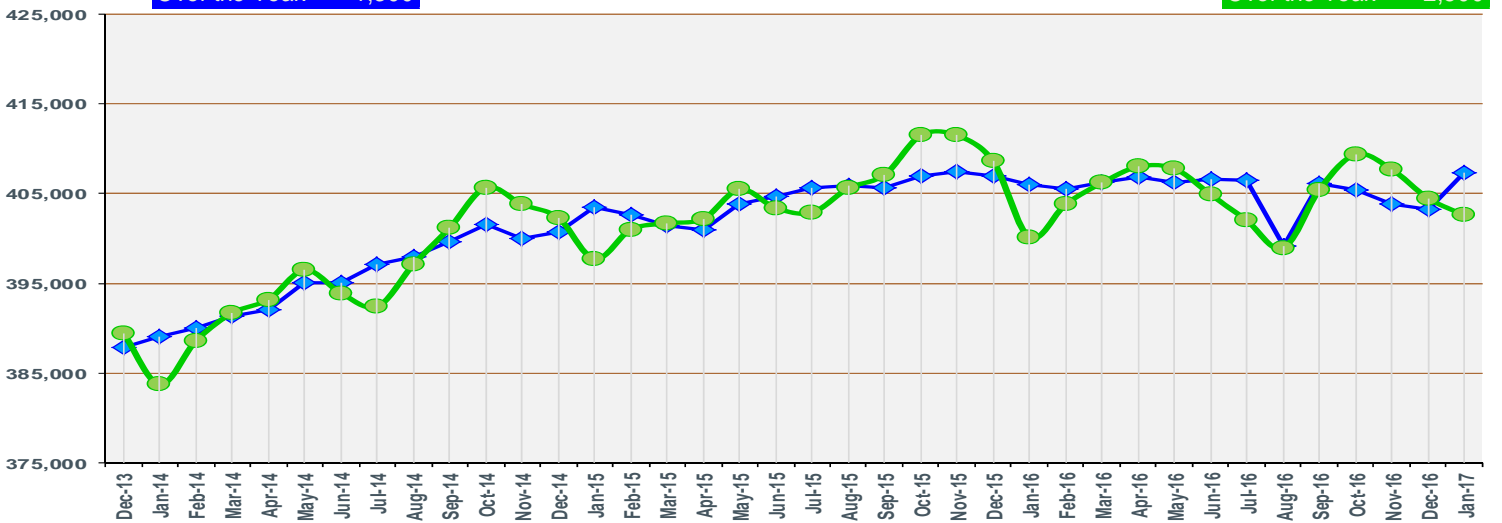
January
2017

Seasonally Adjusted
407,300
Over the Month: 4,100
Over the Year: 1,300

Baton Rouge MSA Nonfarm Employment

Seasonally Adjusted Not Seasonally Adjusted

Not Seasonally Adjusted
402,600
Over the Month: -1,900
Over the Year: 2,500



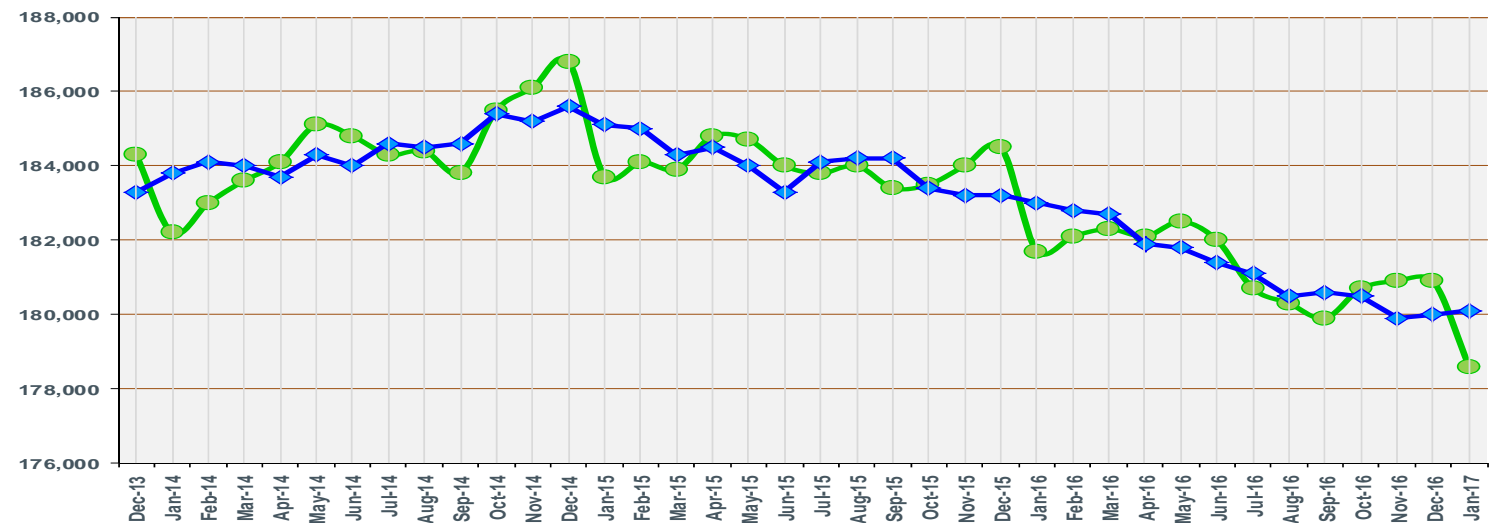
January
2017

Seasonally Adjusted
180,100
Over the Month: 100
Over the Year: -2,900

Shreveport MSA Nonfarm Employment

Seasonally Adjusted Not Seasonally Adjusted

Not Seasonally Adjusted
178,600
Over the Month: -2,300
Over the Year: -3,100



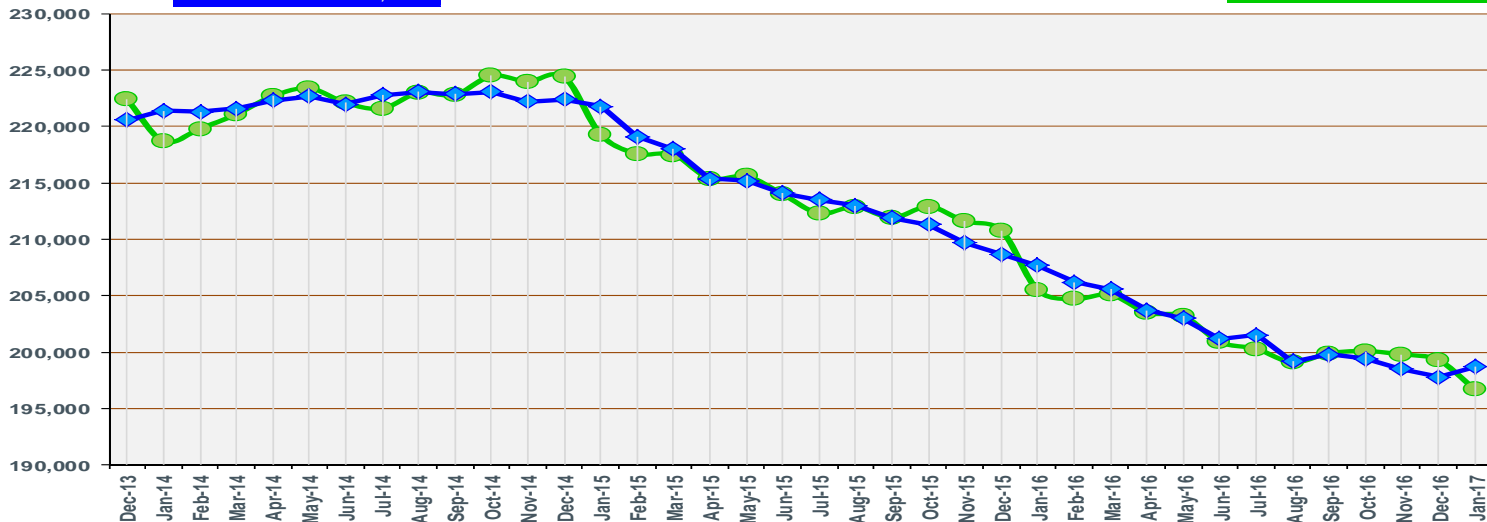
January
2017

Seasonally Adjusted
198,700
Over the Month: 900
Over the Year: -9,000

Lafayette MSA Nonfarm Employment

— Seasonally Adjusted — Not Seasonally Adjusted

Not Seasonally Adjusted
196,700
Over the Month: -2,600
Over the Year: -8,800



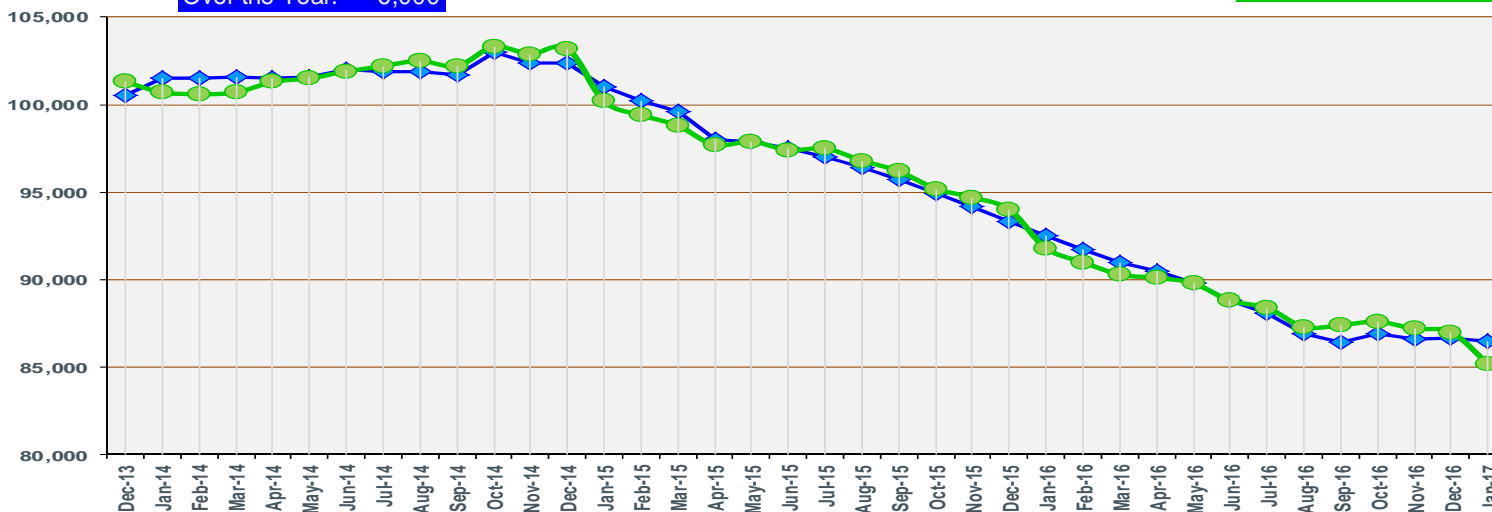
January
2017

Seasonally Adjusted
86,500
Over the Month: -200
Over the Year: -6,000

Houma MSA Nonfarm Employment

— Seasonally Adjusted — Not Seasonally Adjusted

Not Seasonally Adjusted
85,200
Over the Month: -1,800
Over the Year: -6,600



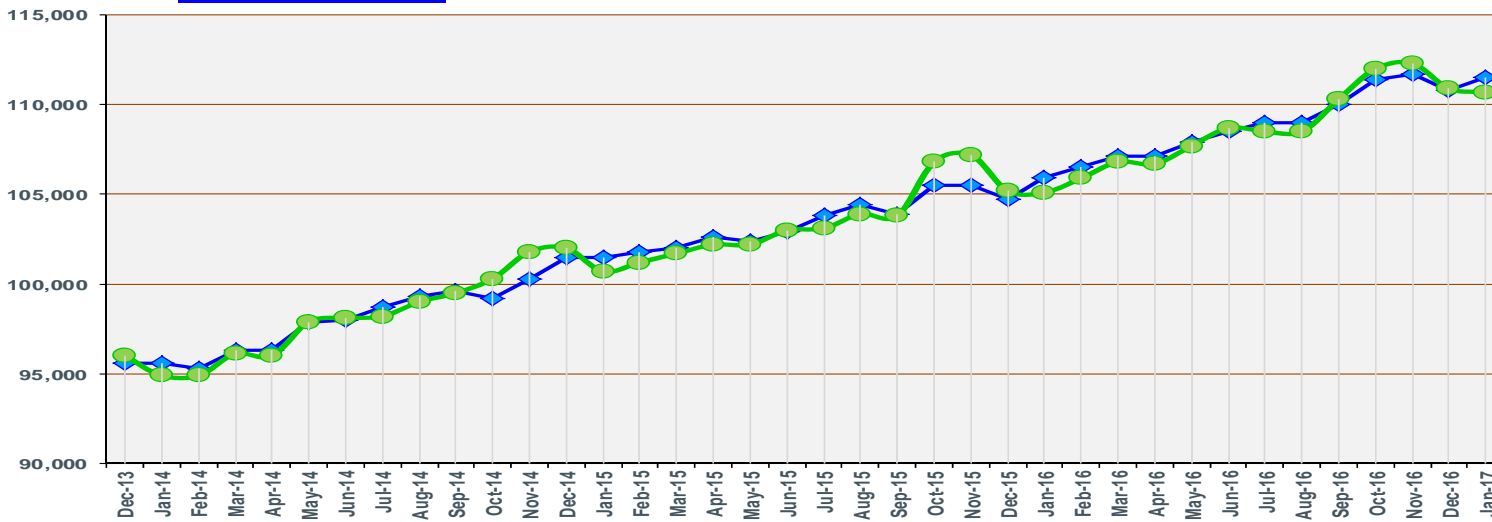
January
2017

Seasonally Adjusted
111,500
Over the Month: 700
Over the Year: 5,600

Lake Charles MSA Nonfarm Employment

— Seasonally Adjusted — Not Seasonally Adjusted

Not Seasonally Adjusted
110,700
Over the Month: -200
Over the Year: 5,600

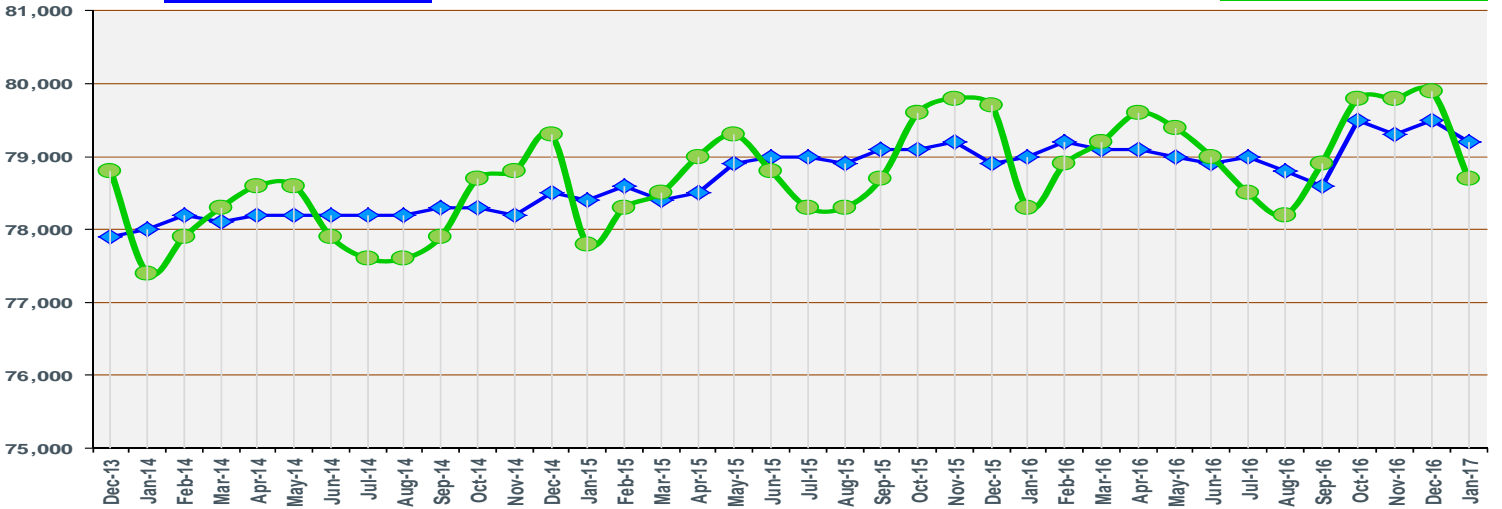
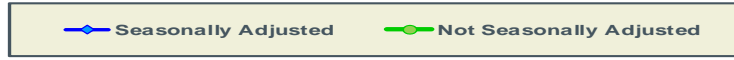


January
2017

Seasonally Adjusted
79,200
Over the Month: -300
Over the Year: 200

Monroe MSA Nonfarm Employment

Not Seasonally Adjusted
78,700
Over the Month: -1,200
Over the Year: 400

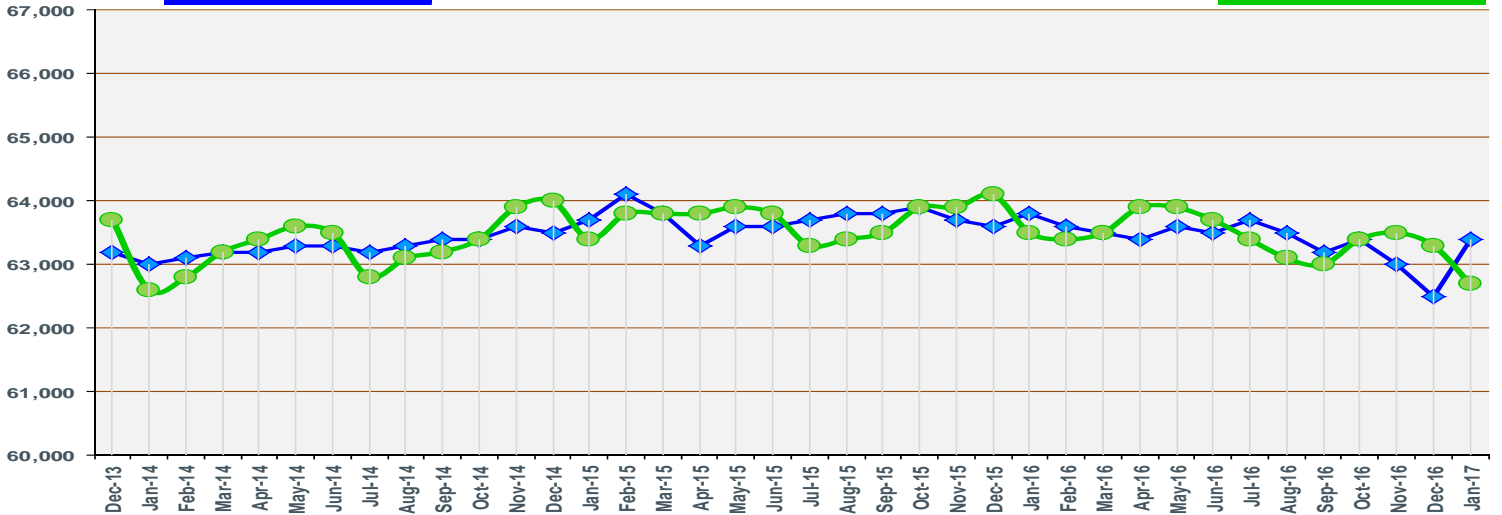
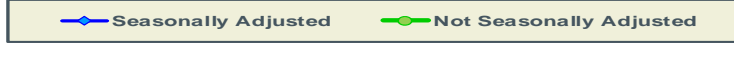


January
2017

Seasonally Adjusted
63,400
Over the Month: 900
Over the Year: -400

Alexandria MSA Nonfarm Employment

Not Seasonally Adjusted
62,700
Over the Month: -600
Over the Year: -800

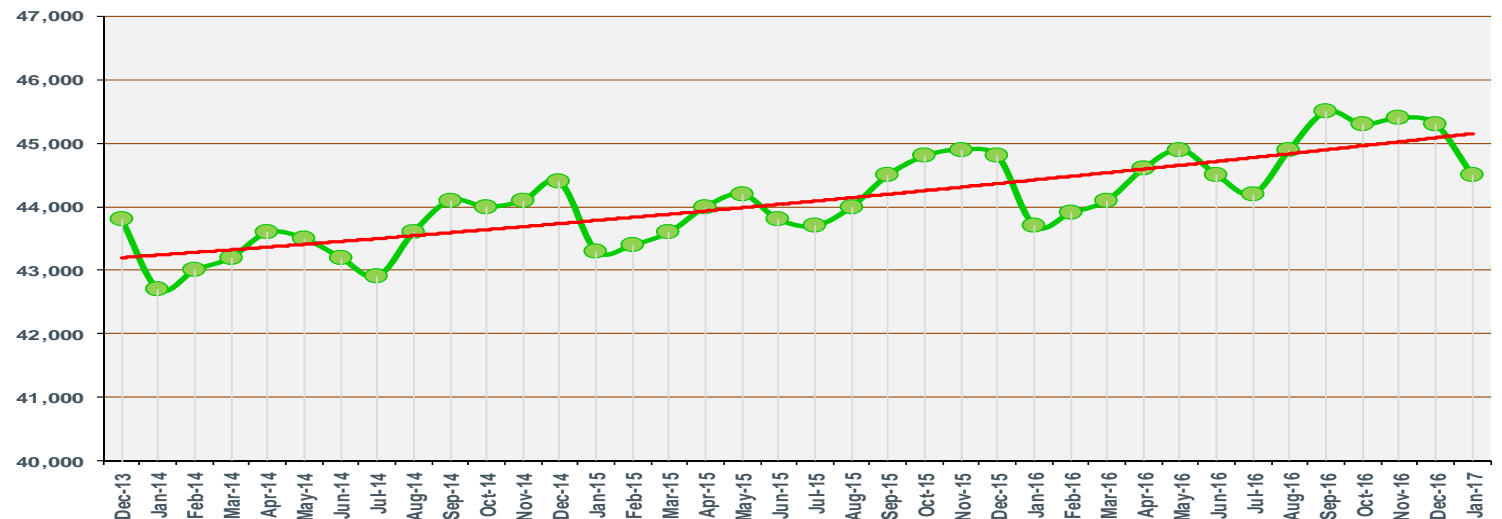


January
2017

The Bureau of Labor
Statistics is not currently
publishing Seasonally
Adjusted for this MSA.

Hammond MSA Nonfarm Employment

Not Seasonally Adjusted
44,500
Over the Month: -800
Over the Year: 800



<i>Louisiana - Seasonally Adjusted</i>	Prel.	Rev.		OTM	OTM	OTY	OTY
	Jan 2017	Dec 2016	Jan 2016	Change	% Change	Change	% Change
Total Nonfarm	1,975,000	1,969,000	1,982,500	6,000	0.30%	-7,500	-0.38%
Total Private	1,650,700	1,645,900	1,655,900	4,800	0.29%	-5,200	-0.31%
Goods-Producing	320,300	310,500	321,700	9,800	3.16%	-1,400	-0.44%
Mining and Logging	34,900	34,700	42,300	200	0.58%	-7,400	-17.49%
Mining, Logging, and Construction	185,400	177,600	182,900	7,800	4.39%	2,500	1.37%
Construction	150,500	142,900	140,600	7,600	5.32%	9,900	7.04%
Manufacturing	134,900	132,900	138,800	2,000	1.50%	-3,900	-2.81%
Durable Goods	62,200	61,600	68,200	600	0.97%	-6,000	-8.80%
Nondurable Goods	72,700	71,300	70,600	1,400	1.96%	2,100	2.97%
Service-Providing	1,654,700	1,658,500	1,660,800	-3,800	-0.23%	-6,100	-0.37%
Private Service-Providing	1,330,400	1,335,400	1,334,200	-5,000	-0.37%	-3,800	-0.28%
Trade, Transportation, and Utilities	387,000	387,700	391,000	-700	-0.18%	-4,000	-1.02%
Wholesale Trade	69,700	69,800	71,500	-100	-0.14%	-1,800	-2.52%
Retail Trade	236,100	235,200	234,800	900	0.38%	1,300	0.55%
Transportation, Warehousing, and Utilities	81,200	82,700	84,700	-1,500	-1.81%	-3,500	-4.13%
Information	22,300	23,600	25,200	-1,300	-5.51%	-2,900	-11.51%
Financial Activities	92,300	92,300	92,500	0	0.00%	-200	-0.22%
Real Estate and Rental and Leasing	29,600	29,600	30,900	0	0.00%	-1,300	-4.21%
Professional and Business Services	209,500	211,300	210,900	-1,800	-0.85%	-1,400	-0.66%
Professional, Scientific, and Technical Services	82,600	84,200	87,700	-1,600	-1.90%	-5,100	-5.82%
Management of Companies and Enterprises	23,300	22,800	23,700	500	2.19%	-400	-1.69%
Admin. and Support and Waste Mgmt. and Remediation Serv.	103,600	104,300	99,500	-700	-0.67%	4,100	4.12%
Education and Health Services	314,900	313,100	307,400	1,800	0.57%	7,500	2.44%
Educational Services	48,200	47,200	45,900	1,000	2.12%	2,300	5.01%
Health Care and Social Assistance	266,700	265,900	261,500	800	0.30%	5,200	1.99%
Leisure and Hospitality	228,600	230,300	231,700	-1,700	-0.74%	-3,100	-1.34%
Arts, Entertainment, and Recreation	29,000	28,800	30,500	200	0.69%	-1,500	-4.92%
Accommodation and Food Services	199,600	201,500	201,200	-1,900	-0.94%	-1,600	-0.80%
Other Services	75,800	77,100	75,500	-1,300	-1.69%	300	0.40%
Government	324,300	323,100	326,600	1,200	0.37%	-2,300	-0.70%
Federal Government	31,300	32,000	30,500	-700	-2.19%	800	2.62%
State Government	86,600	86,500	86,600	100	0.12%	0	0.00%
Local Government	206,400	204,600	209,500	1,800	0.88%	-3,100	-1.48%
<i>MSAs - Seasonally Adjusted</i>	Prel. Jan 2017	Rev. Dec 2016	Jan 2016	OTM Change	OTM % Change	OTY Change	OTY % Change
Alexandria Total Nonfarm	63,400	62,500	63,800	900	1.44%	-400	-0.63%
Baton Rouge Total Nonfarm	407,300	403,200	406,000	4,100	1.02%	1,300	0.32%
Houma Total Nonfarm	86,500	86,700	92,500	-200	-0.23%	-6,000	-6.49%
Lafayette Total Nonfarm	198,700	197,800	207,700	900	0.46%	-9,000	-4.33%
Lake Charles Total Nonfarm	111,500	110,800	105,900	700	0.63%	5,600	5.29%
Monroe Total Nonfarm	79,200	79,500	79,000	-300	-0.38%	200	0.25%
New Orleans Total Nonfarm	577,300	578,700	577,000	-1,400	-0.24%	300	0.05%
Shreveport Total Nonfarm	180,100	180,000	183,000	100	0.06%	-2,900	-1.58%

<i>Louisiana - Not Seasonally Adjusted</i>	Prel.	Rev.		OTM	OTM	OTY	OTY
	Jan	Dec	Jan	Change	%	Change	%
	2017	2016	2016		Change		Change
Total Nonfarm	1,952,500	1,980,100	1,965,500	-27,600	-1.39%	-13,000	-0.66%
Total Private	1,630,500	1,652,700	1,640,700	-22,200	-1.34%	-10,200	-0.62%
Goods-Producing	313,300	311,000	317,200	2,300	0.74%	-3,900	-1.23%
Mining & Logging	34,500	34,800	42,300	-300	-0.86%	-7,800	-18.44%
Oil & Gas Extraction	7,700	7,700	8,600	0	0.00%	-900	-10.47%
Crude Petroleum & Natural Gas Extraction	6,700	6,800	7,900	-100	-1.47%	-1,200	-15.19%
Support Activities for Mining	23,900	24,100	29,700	-200	-0.83%	-5,800	-19.53%
Drilling Oil & Gas Wells	2,800	2,800	3,700	0	0.00%	-900	-24.32%
Mining, Logging, & Construction	179,700	177,500	178,700	2,200	1.24%	1,000	0.56%
Construction	145,200	142,700	136,400	2,500	1.75%	8,800	6.45%
Construction of Buildings	33,200	32,700	24,600	500	1.53%	8,600	34.96%
Residential Building Construction	5,400	5,600	5,100	-200	-3.57%	300	5.88%
Nonresidential Building Construction	27,800	27,100	19,500	700	2.58%	8,300	42.56%
Heavy & Civil Engineering Construction	47,000	44,100	46,400	2,900	6.58%	600	1.29%
Specialty Trade Contractors	65,000	65,900	65,400	-900	-1.37%	-400	-0.61%
Manufacturing	133,600	133,500	138,500	100	0.07%	-4,900	-3.54%
Durable Goods	62,200	61,200	68,300	1,000	1.63%	-6,100	-8.93%
Transportation Equipment Manufacturing	9,500	9,500	10,500	0	0.00%	-1,000	-9.52%
Ship & Boat Building	6,100	6,000	6,400	100	1.67%	-300	-4.69%
Nondurable Goods	71,400	72,300	70,200	-900	-1.24%	1,200	1.71%
Food Manufacturing	15,200	16,300	15,200	-1,100	-6.75%	0	0.00%
Paper Manufacturing	7,000	7,000	7,100	0	0.00%	-100	-1.41%
Petroleum & Coal Products Manufacturing	11,900	11,900	11,800	0	0.00%	100	0.85%
Chemical Manufacturing	25,600	25,500	25,500	100	0.39%	100	0.39%
Basic Chemical Manufacturing	13,700	13,700	13,600	0	0.00%	100	0.74%
Service-Providing	1,639,200	1,669,100	1,648,300	-29,900	-1.79%	-9,100	-0.55%
Private Service-Providing	1,317,200	1,341,700	1,323,500	-24,500	-1.83%	-6,300	-0.48%
Trade, Transportation, & Utilities	384,700	395,900	389,000	-11,200	-2.83%	-4,300	-1.11%
Wholesale Trade	69,400	70,300	71,200	-900	-1.28%	-1,800	-2.53%
Merchant Wholesalers, Durable Goods	36,800	37,100	37,000	-300	-0.81%	-200	-0.54%
Merchant Wholesalers, Nondurable Goods	24,800	25,200	25,400	-400	-1.59%	-600	-2.36%
Retail Trade	234,800	241,700	233,000	-6,900	-2.85%	1,800	0.77%
Motor Vehicle & Parts Dealers	29,400	29,500	29,700	-100	-0.34%	-300	-1.01%
Building Material & Garden Equipment & Supplies Dealers	20,000	20,300	19,300	-300	-1.48%	700	3.63%
Food & Beverage Stores	40,000	40,200	39,800	-200	-0.50%	200	0.50%
Grocery Stores	35,300	35,400	35,100	-100	-0.28%	200	0.57%
Health & Personal Care Stores	17,200	17,800	16,800	-600	-3.37%	400	2.38%
Gasoline Stations	19,800	20,000	19,500	-200	-1.00%	300	1.54%
Clothing and Clothing Accessories Stores	18,700	20,200	18,000	-1,500	-7.43%	700	3.89%
General Merchandise Stores	57,700	61,400	54,400	-3,700	-6.03%	3,300	6.07%
Department Stores	10,900	12,200	11,500	-1,300	-10.66%	-600	-5.22%
Transportation, Warehousing, & Utilities	80,500	83,900	84,800	-3,400	-4.05%	-4,300	-5.07%
Transportation and Warehousing	71,700	75,200	76,300	-3,500	-4.65%	-4,600	-6.03%
Truck Transportation	16,400	16,800	17,400	-400	-2.38%	-1,000	-5.75%
Support Activities for Transportation	18,400	19,000	20,100	-600	-3.16%	-1,700	-8.46%

<i>Louisiana - Not Seasonally Adjusted</i>	Prel.	Rev.		OTM	OTM	OTY	OTY
	Jan	Dec	Jan	Change	%	Change	%
	2017	2016	2016		Change		Change
Information	21,600	23,400	24,800	-1,800	-7.69%	-3,200	-12.90%
Telecommunications	8,900	9,100	9,400	-200	-2.20%	-500	-5.32%
Financial Activities	92,100	92,100	92,100	0	0.00%	0	0.00%
Finance & Insurance	62,800	62,500	61,500	300	0.48%	1,300	2.11%
Credit Intermediation & Related Activities	30,200	30,300	30,600	-100	-0.33%	-400	-1.31%
Depository Credit Intermediation	21,200	21,200	21,300	0	0.00%	-100	-0.47%
Insurance Carriers & Related Activities	28,100	28,300	27,000	-200	-0.71%	1,100	4.07%
Real Estate & Rental & Leasing	29,300	29,600	30,600	-300	-1.01%	-1,300	-4.25%
Professional & Business Services	207,800	211,600	208,600	-3,800	-1.80%	-800	-0.38%
Professional, Scientific, & Technical Services	82,900	84,400	88,400	-1,500	-1.78%	-5,500	-6.22%
Legal Services	18,000	18,500	18,600	-500	-2.70%	-600	-3.23%
Accounting, Tax Preparation, Bookkeeping & Payroll Services	12,500	11,600	13,300	900	7.76%	-800	-6.02%
Architectural, Engineering, & Related Services	22,800	23,100	24,200	-300	-1.30%	-1,400	-5.79%
Management of Companies & Enterprises	23,200	23,000	23,400	200	0.87%	-200	-0.85%
Admin. & Support & Waste Mgmt. & Remediation Serv.	101,700	104,200	96,800	-2,500	-2.40%	4,900	5.06%
Administrative & Support Services	91,500	94,100	87,700	-2,600	-2.76%	3,800	4.33%
Employment Services	30,400	33,700	30,000	-3,300	-9.79%	400	1.33%
Services to Buildings & Dwellings	22,700	22,600	21,800	100	0.44%	900	4.13%
Education & Health Services	312,500	314,300	306,800	-1,800	-0.57%	5,700	1.86%
Educational Services	47,200	48,400	45,800	-1,200	-2.48%	1,400	3.06%
Colleges, Universities, & Professional Schools	13,800	14,200	12,900	-400	-2.82%	900	6.98%
Health Care & Social Assistance	265,300	265,900	261,000	-600	-0.23%	4,300	1.65%
Ambulatory Health Care Services	99,800	100,100	97,900	-300	-0.30%	1,900	1.94%
Offices of Physicians	39,300	39,800	38,500	-500	-1.26%	800	2.08%
Home Health Care Services	20,900	21,000	21,200	-100	-0.48%	-300	-1.42%
Hospitals	78,200	78,500	76,900	-300	-0.38%	1,300	1.69%
Nursing & Residential Care Facilities	42,400	42,800	42,000	-400	-0.93%	400	0.95%
Nursing Care Facilities	26,500	26,600	26,500	-100	-0.38%	0	0.00%
Social Assistance	44,900	44,500	44,200	400	0.90%	700	1.58%
Leisure & Hospitality	223,400	227,800	227,200	-4,400	-1.93%	-3,800	-1.67%
Arts, Entertainment, & Recreation	27,500	27,900	29,200	-400	-1.43%	-1,700	-5.82%
Amusement, Gambling, & Recreation Industries	21,600	21,300	21,800	300	1.41%	-200	-0.92%
Gambling Industries	9,700	9,700	10,500	0	0.00%	-800	-7.62%
Accommodation & Food Services	195,900	199,900	198,000	-4,000	-2.00%	-2,100	-1.06%
Accommodation	33,100	33,500	32,400	-400	-1.19%	700	2.16%
Food Services & Drinking Places	162,800	166,400	165,600	-3,600	-2.16%	-2,800	-1.69%
Other Services	75,100	76,600	75,000	-1,500	-1.96%	100	0.13%
Repair & Maintenance	18,900	19,100	19,500	-200	-1.05%	-600	-3.08%
Automotive Repair & Maintenance	11,100	11,100	11,000	0	0.00%	100	0.91%
Personal & Laundry Services	16,900	17,200	16,900	-300	-1.74%	0	0.00%
Government	322,000	327,400	324,800	-5,400	-1.65%	-2,800	-0.86%
Federal Government	31,200	32,100	30,400	-900	-2.80%	800	2.63%
State Government	83,800	89,800	84,100	-6,000	-6.68%	-300	-0.36%
Local Government	207,000	205,500	210,300	1,500	0.73%	-3,300	-1.57%

LOUISIANA & MSAs NONFARM EMPLOYMENT

12

<i>New Orleans-Metairie MSA - Not Seasonally Adjusted</i>	Prel. Jan 2017	Rev. Dec 2016	Jan 2016	OTM Change	OTM % Change	OTY Change	OTY % Change
Total Nonfarm	572,200	580,400	573,000	-8,200	-1.41%	-800	-0.14%
Total Private	503,400	510,600	501,300	-7,200	-1.41%	2,100	0.42%
Goods-Producing	65,200	65,500	66,200	-300	-0.46%	-1,000	-1.51%
Mining & Logging	5,100	5,200	6,000	-100	-1.92%	-900	-15.00%
Mining, Logging, & Construction	34,600	35,400	36,200	-800	-2.26%	-1,600	-4.42%
Construction	29,500	30,200	30,200	-700	-2.32%	-700	-2.32%
Heavy & Civil Engineering Construction	6,700	6,600	7,000	100	1.52%	-300	-4.29%
Specialty Trade Contractors	15,600	16,300	17,100	-700	-4.29%	-1,500	-8.77%
Manufacturing	30,600	30,100	30,000	500	1.66%	600	2.00%
Durable Goods	11,600	11,400	11,500	200	1.75%	100	0.87%
Transportation Equipment Manufacturing	2,400	2,400	2,400	0	0.00%	0	0.00%
Ship & Boat Building	1,400	1,300	1,300	100	7.69%	100	7.69%
Nondurable Goods	19,000	18,700	18,500	300	1.60%	500	2.70%
Chemical Manufacturing	5,300	5,200	5,100	100	1.92%	200	3.92%
Service-Providing	507,000	514,900	506,800	-7,900	-1.53%	200	0.04%
Private Service-Providing	438,200	445,100	435,100	-6,900	-1.55%	3,100	0.71%
Trade, Transportation, & Utilities	117,000	120,100	116,400	-3,100	-2.58%	600	0.52%
Wholesale Trade	23,500	23,700	23,300	-200	-0.84%	200	0.86%
Merchant Wholesalers, Durable Goods	10,400	10,500	10,600	-100	-0.95%	-200	-1.89%
Merchant Wholesalers, Nondurable Goods	8,600	8,700	8,700	-100	-1.15%	-100	-1.15%
Retail Trade	65,400	67,700	64,100	-2,300	-3.40%	1,300	2.03%
Grocery Stores	10,300	10,400	10,300	-100	-0.96%	0	0.00%
General Merchandise Stores	15,100	15,900	13,700	-800	-5.03%	1,400	10.22%
Transportation, Warehousing, & Utilities	28,100	28,700	29,000	-600	-2.09%	-900	-3.10%
Information	6,800	7,100	8,700	-300	-4.23%	-1,900	-21.84%
Financial Activities	29,900	30,500	29,500	-600	-1.97%	400	1.36%
Finance & Insurance	21,600	21,800	20,900	-200	-0.92%	700	3.35%
Credit Intermediation & Related Activities	8,100	8,100	8,100	0	0.00%	0	0.00%
Depository Credit Intermediation	6,000	6,000	6,100	0	0.00%	-100	-1.64%
Professional & Business Services	74,400	75,400	73,500	-1,000	-1.33%	900	1.22%
Professional, Scientific, & Technical Services	30,600	31,100	32,400	-500	-1.61%	-1,800	-5.56%
Legal Services	8,100	8,300	8,400	-200	-2.41%	-300	-3.57%
Management of Companies & Enterprises	7,700	7,800	8,000	-100	-1.28%	-300	-3.75%
Admin. & Support & Waste Mgmt. & Remediation Serv.	36,100	36,500	33,100	-400	-1.10%	3,000	9.06%
Administrative & Support Services	33,300	33,800	30,800	-500	-1.48%	2,500	8.12%
Employment Services	11,600	12,600	11,100	-1,000	-7.94%	500	4.50%
Education & Health Services	100,800	101,900	97,100	-1,100	-1.08%	3,700	3.81%
Educational Services	30,500	31,300	29,400	-800	-2.56%	1,100	3.74%
Colleges, Universities, & Professional Schools	12,200	12,300	11,400	-100	-0.81%	800	7.02%
Health Care & Social Assistance	70,300	70,600	67,700	-300	-0.42%	2,600	3.84%
Ambulatory Health Care Services	26,500	26,700	25,900	-200	-0.75%	600	2.32%
Hospitals	24,700	24,900	22,700	-200	-0.80%	2,000	8.81%
Leisure & Hospitality	85,300	85,900	86,100	-600	-0.70%	-800	-0.93%
Arts, Entertainment, & Recreation	11,000	11,300	11,900	-300	-2.65%	-900	-7.56%
Amusement, Gambling, & Recreation Industries	5,800	5,800	6,200	0	0.00%	-400	-6.45%
Gambling Industries	1,700	1,700	1,800	0	0.00%	-100	-5.56%
Accommodation & Food Services	74,300	74,600	74,200	-300	-0.40%	100	0.13%
Accommodation	14,400	14,500	14,300	-100	-0.69%	100	0.70%
Food Services & Drinking Places	59,900	60,100	59,900	-200	-0.33%	0	0.00%
Other Services	24,000	24,200	23,800	-200	-0.83%	200	0.84%
Government	68,800	69,800	71,700	-1,000	-1.43%	-2,900	-4.04%
Federal Government	12,300	12,700	12,200	-400	-3.15%	100	0.82%
State Government	11,200	12,400	12,100	-1,200	-9.68%	-900	-7.44%
Local Government	45,300	44,700	47,400	600	1.34%	-2,100	-4.43%
<i>Hammond MSA - Not Seasonally Adjusted</i>	Prel. Jan 2017	Rev. Dec 2016	Jan 2016	OTM Change	OTM % Change	OTY Change	OTY % Change
Total Nonfarm	44,500	45,300	43,700	-800	-1.77%	800	1.83%
Total Private	33,500	33,900	32,800	-400	-1.18%	700	2.13%
Goods-Producing	3,400	3,400	3,400	0	0.00%	0	0.00%
Service-Providing	41,100	41,900	40,300	-800	-1.91%	800	1.99%
Private Service-Providing	30,100	30,500	29,400	-400	-1.31%	700	2.38%
Government	11,000	11,400	10,900	-400	-3.51%	100	0.92%

<i>Baton Rouge MSA - Not Seasonally Adjusted</i>	Prel.	Rev.		OTM	OTM	OTY	OTY
	Jan 2017	Dec 2016	Jan 2016	Change	% Change	Change	% Change
Total Nonfarm	402,600	404,500	400,100	-1,900	-0.47%	2,500	0.62%
Total Private	331,000	331,300	327,800	-300	-0.09%	3,200	0.98%
Goods-Producing	80,500	78,800	79,300	1,700	2.16%	1,200	1.51%
Mining & Logging	1,000	1,000	1,200	0	0.00%	-200	-16.67%
Mining, Logging, & Construction	51,500	49,500	50,100	2,000	4.04%	1,400	2.79%
Construction	50,500	48,500	48,900	2,000	4.12%	1,600	3.27%
Construction of Buildings	9,200	9,000	8,400	200	2.22%	800	9.52%
Nonresidential Building Construction	7,900	7,700	7,200	200	2.60%	700	9.72%
Heavy & Civil Engineering Construction	18,500	16,200	18,200	2,300	14.20%	300	1.65%
Specialty Trade Contractors	22,800	23,300	22,300	-500	-2.15%	500	2.24%
Manufacturing	29,000	29,300	29,200	-300	-1.02%	-200	-0.68%
Nondurable Goods	18,300	18,600	18,300	-300	-1.61%	0	0.00%
Chemical Manufacturing	10,800	10,800	10,800	0	0.00%	0	0.00%
Basic Chemical Manufacturing	6,000	6,000	6,100	0	0.00%	-100	-1.64%
Service-Providing	322,100	325,700	320,800	-3,600	-1.11%	1,300	0.41%
Private Service-Providing	250,500	252,500	248,500	-2,000	-0.79%	2,000	0.80%
Trade, Transportation, & Utilities	70,000	71,500	70,300	-1,500	-2.10%	-300	-0.43%
Wholesale Trade	13,300	13,300	13,400	0	0.00%	-100	-0.75%
Retail Trade	42,700	43,900	42,800	-1,200	-2.73%	-100	-0.23%
Grocery Stores	6,800	6,800	6,600	0	0.00%	200	3.03%
General Merchandise Stores	10,000	10,500	9,600	-500	-4.76%	400	4.17%
Department Stores	1,600	1,800	1,800	-200	-11.11%	-200	-11.11%
Transportation, Warehousing, & Utilities	14,000	14,300	14,100	-300	-2.10%	-100	-0.71%
Information	5,200	5,400	5,700	-200	-3.70%	-500	-8.77%
Financial Activities	18,900	19,100	18,500	-200	-1.05%	400	2.16%
Finance & Insurance	12,700	12,700	12,600	0	0.00%	100	0.79%
Depository Credit Intermediation	3,700	3,700	3,800	0	0.00%	-100	-2.63%
Professional & Business Services	48,300	49,000	47,600	-700	-1.43%	700	1.47%
Professional, Scientific, & Technical Services	20,800	20,900	20,800	-100	-0.48%	0	0.00%
Admin. & Support & Waste Mgmt. & Remediation Serv.	21,700	22,200	21,200	-500	-2.25%	500	2.36%
Education & Health Services	52,600	52,200	51,900	400	0.77%	700	1.35%
Health Care & Social Assistance	45,300	45,100	45,200	200	0.44%	100	0.22%
Ambulatory Health Care Services	19,800	20,000	19,800	-200	-1.00%	0	0.00%
Hospitals	12,000	12,000	12,200	0	0.00%	-200	-1.64%
Leisure & Hospitality	39,100	38,800	37,900	300	0.77%	1,200	3.17%
Accommodation & Food Services	33,100	33,400	32,900	-300	-0.90%	200	0.61%
Food Services & Drinking Places	29,900	30,300	30,100	-400	-1.32%	-200	-0.66%
Other Services	16,400	16,500	16,600	-100	-0.61%	-200	-1.20%
Government	71,600	73,200	72,300	-1,600	-2.19%	-700	-0.97%
Federal Government	2,900	3,000	2,800	-100	-3.33%	100	3.57%
State Government	36,000	37,300	36,900	-1,300	-3.49%	-900	-2.44%
Local Government	32,700	32,900	32,600	-200	-0.61%	100	0.31%
<i>Houma-Thibodaux MSA - Not Seasonally Adjusted</i>	Prel. Jan 2017	Rev. Dec 2016	Jan 2016	OTM Change	OTM % Change	OTY Change	OTY % Change
Total Nonfarm	85,200	87,000	91,800	-1,800	-2.07%	-6,600	-7.19%
Total Private	73,000	74,300	79,500	-1,300	-1.75%	-6,500	-8.18%
Goods-Producing	16,600	16,800	19,300	-200	-1.19%	-2,700	-13.99%
Mining & Logging	5,300	5,400	6,700	-100	-1.85%	-1,400	-20.90%
Support Activities for Mining	4,500	4,600	5,800	-100	-2.17%	-1,300	-22.41%
Mining, Logging, & Construction	9,800	9,900	11,300	-100	-1.01%	-1,500	-13.27%
Construction	4,500	4,500	4,600	0	0.00%	-100	-2.17%
Service-Providing	68,600	70,200	72,500	-1,600	-2.28%	-3,900	-5.38%
Private Service-Providing	56,400	57,500	60,200	-1,100	-1.91%	-3,800	-6.31%
Trade, Transportation, & Utilities	22,200	23,200	25,300	-1,000	-4.31%	-3,100	-12.25%
Retail Trade	11,300	11,500	11,000	-200	-1.74%	300	2.73%
Support Activities for Transportation	4,400	4,400	5,400	0	0.00%	-1,000	-18.52%
Administrative & Support Services	3,200	3,400	3,500	-200	-5.88%	-300	-8.57%
Employment Services	1,500	1,800	1,900	-300	-16.67%	-400	-21.05%
Leisure & Hospitality	7,700	7,800	8,100	-100	-1.28%	-400	-4.94%
Government	12,200	12,700	12,300	-500	-3.94%	-100	-0.81%
Federal Government	400	400	400	0	0.00%	0	0.00%
State Government	1,800	2,200	1,900	-400	-18.18%	-100	-5.26%
Local Government	10,000	10,100	10,000	-100	-0.99%	0	0.00%

LOUISIANA & MSAs NONFARM EMPLOYMENT

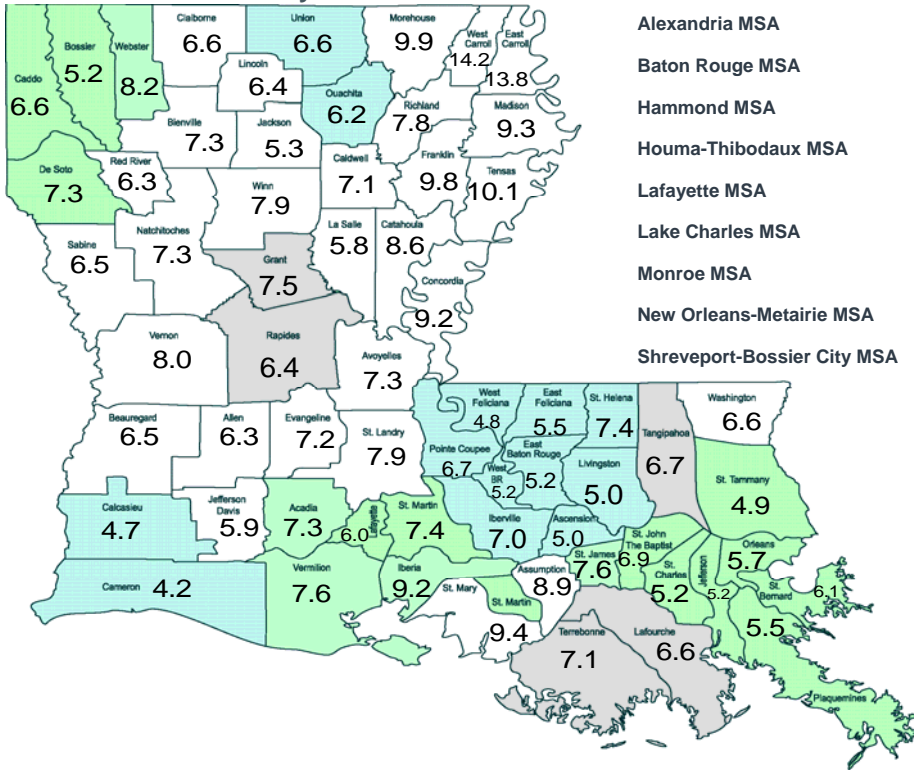
14

<i>Shreveport-Bossier City MSA - Not Seasonally Adjusted</i>	Prel.	Rev.		OTM	OTM	OTY	OTY
	Jan 2017	Dec 2016	Jan 2016	Change	% Change	Change	% Change
Total Nonfarm	178,600	180,900	181,700	-2,300	-1.27%	-3,100	-1.71%
Total Private	149,200	151,100	150,700	-1,900	-1.26%	-1,500	-1.00%
Goods-Producing	22,400	22,400	23,200	0	0.00%	-800	-3.45%
Mining & Logging	3,700	3,800	4,300	-100	-2.63%	-600	-13.95%
Mining, Logging, & Construction	11,900	12,100	12,600	-200	-1.65%	-700	-5.56%
Construction	8,200	8,300	8,300	-100	-1.20%	-100	-1.20%
Manufacturing	10,500	10,300	10,600	200	1.94%	-100	-0.94%
Service-Providing	156,200	158,500	158,500	-2,300	-1.45%	-2,300	-1.45%
Private Service-Providing	126,800	128,700	127,500	-1,900	-1.48%	-700	-0.55%
Trade, Transportation, & Utilities	37,700	38,700	37,900	-1,000	-2.58%	-200	-0.53%
Wholesale Trade	7,600	7,700	7,800	-100	-1.30%	-200	-2.56%
Retail Trade	23,800	24,600	23,500	-800	-3.25%	300	1.28%
General Merchandise Stores	6,100	6,400	5,900	-300	-4.69%	200	3.39%
Transportation, Warehousing, & Utilities	6,300	6,400	6,600	-100	-1.56%	-300	-4.55%
Information	2,000	2,100	2,100	-100	-4.76%	-100	-4.76%
Financial Activities	7,400	7,400	7,500	0	0.00%	-100	-1.33%
Professional & Business Services	16,500	16,700	16,800	-200	-1.20%	-300	-1.79%
Admin. & Support & Waste Mgmt. & Remediation Serv.	9,800	10,000	9,800	-200	-2.00%	0	0.00%
Education & Health Services	33,600	33,800	33,100	-200	-0.59%	500	1.51%
Health Care & Social Assistance	31,200	31,300	30,700	-100	-0.32%	500	1.63%
Hospitals	13,300	13,300	13,000	0	0.00%	300	2.31%
Leisure & Hospitality	23,000	23,300	23,500	-300	-1.29%	-500	-2.13%
Arts, Entertainment, & Recreation	4,600	4,600	4,800	0	0.00%	-200	-4.17%
Amusement, Gambling, & Recreation Industries	4,200	4,300	4,500	-100	-2.33%	-300	-6.67%
Gambling Industries	3,300	3,300	3,600	0	0.00%	-300	-8.33%
Accommodation & Food Services	18,400	18,700	18,700	-300	-1.60%	-300	-1.60%
Food Services & Drinking Places	14,800	15,100	15,000	-300	-1.99%	-200	-1.33%
Other Services	6,600	6,700	6,600	-100	-1.49%	0	0.00%
Government	29,400	29,800	31,000	-400	-1.34%	-1,600	-5.16%
Federal Government	4,700	4,900	4,800	-200	-4.08%	-100	-2.08%
State Government	4,900	5,300	5,500	-400	-7.55%	-600	-10.91%
Local Government	19,800	19,600	20,700	200	1.02%	-900	-4.35%
<i>Lafayette MSA - Not Seasonally Adjusted</i>	Prel. Jan 2017	Rev. Dec 2016	Jan 2016	OTM Change	OTM % Change	OTY Change	OTY % Change
Total Nonfarm	196,700	199,300	205,500	-2,600	-1.30%	-8,800	-4.28%
Total Private	170,800	172,600	179,500	-1,800	-1.04%	-8,700	-4.85%
Goods-Producing	38,300	37,900	43,600	400	1.06%	-5,300	-12.16%
Mining & Logging	13,700	13,600	16,800	100	0.74%	-3,100	-18.45%
Support Activities for Mining	11,200	11,300	14,300	-100	-0.88%	-3,100	-21.68%
Mining, Logging, & Construction	23,400	23,100	27,300	300	1.30%	-3,900	-14.29%
Construction	9,700	9,500	10,500	200	2.11%	-800	-7.62%
Manufacturing	14,900	14,800	16,300	100	0.68%	-1,400	-8.59%
Service-Providing	158,400	161,400	161,900	-3,000	-1.86%	-3,500	-2.16%
Private Service-Providing	132,500	134,700	135,900	-2,200	-1.63%	-3,400	-2.50%
Trade, Transportation, & Utilities	41,400	42,200	42,700	-800	-1.90%	-1,300	-3.04%
Wholesale Trade	9,000	9,100	9,300	-100	-1.10%	-300	-3.23%
Retail Trade	27,300	27,900	27,600	-600	-2.15%	-300	-1.09%
General Merchandise Stores	6,100	6,400	5,500	-300	-4.69%	600	10.91%
Transportation, Warehousing, & Utilities	5,100	5,200	5,800	-100	-1.92%	-700	-12.07%
Information	2,500	2,500	2,600	0	0.00%	-100	-3.85%
Financial Activities	10,500	10,600	10,900	-100	-0.94%	-400	-3.67%
Professional & Business Services	19,400	20,100	20,900	-700	-3.48%	-1,500	-7.18%
Professional, Scientific, & Technical Services	8,900	9,200	9,500	-300	-3.26%	-600	-6.32%
Education & Health Services	30,100	30,400	29,900	-300	-0.99%	200	0.67%
Health Care & Social Assistance	28,900	29,100	28,700	-200	-0.69%	200	0.70%
Hospitals	7,500	7,500	7,900	0	0.00%	-400	-5.06%
Leisure & Hospitality	21,500	21,700	21,700	-200	-0.92%	-200	-0.92%
Accommodation & Food Services	19,000	19,300	19,000	-300	-1.55%	0	0.00%
Food Services & Drinking Places	17,600	17,700	17,500	-100	-0.56%	100	0.57%
Other Services	7,100	7,200	7,200	-100	-1.39%	-100	-1.39%
Government	25,900	26,700	26,000	-800	-3.00%	-100	-0.38%
Federal Government	1,300	1,400	1,400	-100	-7.14%	-100	-7.14%
State Government	4,800	5,700	4,800	-900	-15.79%	0	0.00%
Local Government	19,800	19,600	19,800	200	1.02%	0	0.00%

<i>Lake Charles MSA - Not Seasonally Adjusted</i>	Prel.	Rev.		OTM	OTM	OTY	OTY
	Jan	Dec	Jan	Change	%	Change	%
	2017	2016	2016		Change		Change
Total Nonfarm	110,700	110,900	105,100	-200	-0.18%	5,600	5.33%
Total Private	95,700	95,900	90,000	-200	-0.21%	5,700	6.33%
Goods-Producing	33,200	32,600	28,300	600	1.84%	4,900	17.31%
Mining & Logging	500	500	400	0	0.00%	100	25.00%
Mining, Logging, & Construction	22,700	22,100	17,800	600	2.71%	4,900	27.53%
Construction	22,200	21,600	17,400	600	2.78%	4,800	27.59%
Heavy & Civil Engineering Construction	8,700	8,800	9,800	-100	-1.14%	-1,100	-11.22%
Manufacturing	10,500	10,500	10,500	0	0.00%	0	0.00%
Nondurable Goods	7,500	7,600	7,300	-100	-1.32%	200	2.74%
Service-Providing	77,500	78,300	76,800	-800	-1.02%	700	0.91%
Private Service-Providing	62,500	63,300	61,700	-800	-1.26%	800	1.30%
Trade, Transportation, & Utilities	18,400	18,800	17,600	-400	-2.13%	800	4.55%
Retail Trade	11,500	11,800	11,300	-300	-2.54%	200	1.77%
Professional & Business Services	9,400	9,400	9,400	0	0.00%	0	0.00%
Leisure & Hospitality	14,600	14,900	14,700	-300	-2.01%	-100	-0.68%
Accommodation & Food Services	13,400	13,600	13,400	-200	-1.47%	0	0.00%
Government	15,000	15,000	15,100	0	0.00%	-100	-0.66%
Federal Government	600	600	500	0	0.00%	100	20.00%
State Government	2,700	2,900	2,900	-200	-6.90%	-200	-6.90%
Local Government	11,700	11,500	11,700	200	1.74%	0	0.00%
<i>Monroe MSA - Not Seasonally Adjusted</i>	Prel.	Rev.		OTM	OTM	OTY	OTY
	Jan	Dec	Jan	Change	%	Change	%
	2017	2016	2016		Change		Change
Total Nonfarm	78,700	79,900	78,300	-1,200	-1.50%	400	0.51%
Total Private	67,500	68,000	66,600	-500	-0.74%	900	1.35%
Goods-Producing	10,800	10,500	10,600	300	2.86%	200	1.89%
Manufacturing	6,500	6,500	6,600	0	0.00%	-100	-1.52%
Nondurable Goods	4,600	4,700	4,600	-100	-2.13%	0	0.00%
Service-Providing	67,900	69,400	67,700	-1,500	-2.16%	200	0.30%
Private Service-Providing	56,700	57,500	56,000	-800	-1.39%	700	1.25%
Trade, Transportation, & Utilities	14,600	14,900	14,600	-300	-2.01%	0	0.00%
Retail Trade	10,200	10,500	10,200	-300	-2.86%	0	0.00%
Professional & Business Services	8,700	8,800	8,300	-100	-1.14%	400	4.82%
Education & Health Services	15,700	15,900	15,700	-200	-1.26%	0	0.00%
Hospitals	3,600	3,600	3,800	0	0.00%	-200	-5.26%
Leisure & Hospitality	7,800	7,900	7,700	-100	-1.27%	100	1.30%
Government	11,200	11,900	11,700	-700	-5.88%	-500	-4.27%
Federal Government	500	500	500	0	0.00%	0	0.00%
State Government	2,100	2,800	2,500	-700	-25.00%	-400	-16.00%
Local Government	8,600	8,600	8,700	0	0.00%	-100	-1.15%
<i>Alexandria MSA - Not Seasonally Adjusted</i>	Prel.	Rev.		OTM	OTM	OTY	OTY
	Jan	Dec	Jan	Change	%	Change	%
	2017	2016	2016		Change		Change
Total Nonfarm	62,700	63,300	63,500	-600	-0.95%	-800	-1.26%
Total Private	49,400	50,000	49,900	-600	-1.20%	-500	-1.00%
Goods-Producing	8,200	8,200	8,700	0	0.00%	-500	-5.75%
Service-Providing	54,500	55,100	54,800	-600	-1.09%	-300	-0.55%
Private Service-Providing	41,200	41,800	41,200	-600	-1.44%	0	0.00%
Trade, Transportation, & Utilities	11,300	11,900	11,500	-600	-5.04%	-200	-1.74%
Retail Trade	8,000	8,300	7,900	-300	-3.61%	100	1.27%
Hospitals	4,000	4,000	4,100	0	0.00%	-100	-2.44%
Government	13,300	13,300	13,600	0	0.00%	-300	-2.21%
Federal Government	2,900	2,900	3,000	0	0.00%	-100	-3.33%
State Government	3,400	3,500	3,600	-100	-2.86%	-200	-5.56%
Local Government	7,000	6,900	7,000	100	1.45%	0	0.00%

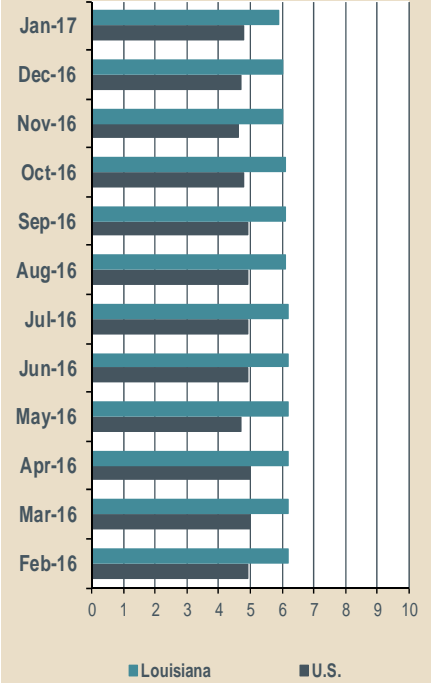
Louisiana Unemployment Rates (Not Seasonally Adjusted)

January 2017



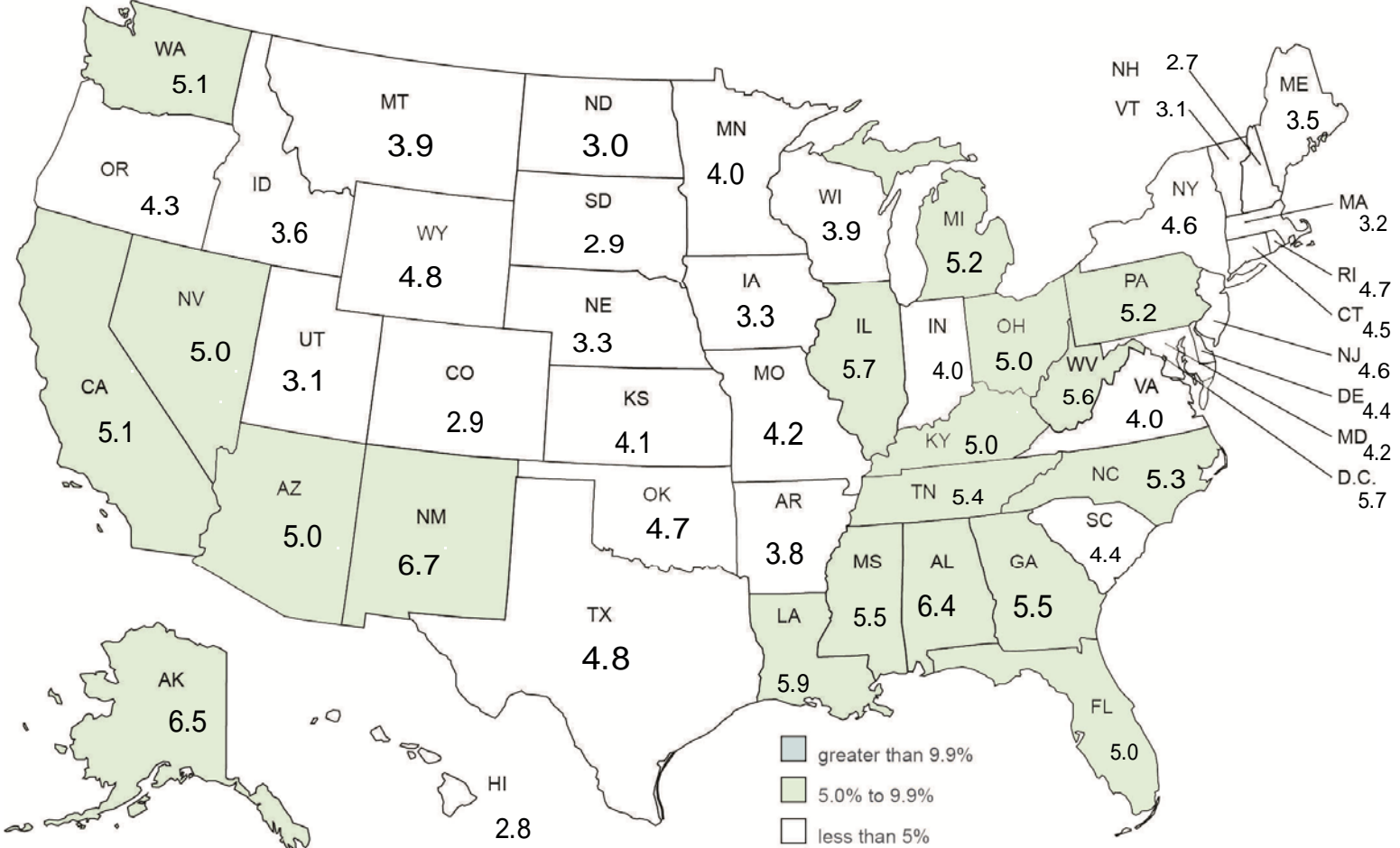
Statewide	6.1 %
Alexandria MSA	6.6 %
Baton Rouge MSA	5.3 %
Hammond MSA	6.7 %
Houma-Thibodaux MSA	6.8 %
Lafayette MSA	6.9 %
Lake Charles MSA	4.7 %
Monroe MSA	6.2 %
New Orleans-Metairie MSA	5.4 %
Shreveport-Bossier City MSA	6.4 %

United States - Louisiana Unemployment Rates (Seasonally Adjusted)



United States Unemployment Rates (Seasonally Adjusted)

January 2017



CIVILIAN LABOR FORCE (Not Seasonally Adjusted)

Area	January 2017			December 2016			January 2016		
	Employed	Unemployed	Rate	Employed	Unemployed	Rate	Employed	Unemployed	Rate
UNITED STATES	150,527,000	8,149,000	5.1	151,798,000	7,170,000	4.5	149,037,000	8,309,000	5.3
LOUISIANA	1,948,261	125,703	6.1	1,971,776	112,436	5.4	1,975,488	136,134	6.4
ALEXANDRIA MSA	60,416	4,235	6.6	60,971	3,776	5.8	61,460	4,262	6.5
Grant	7,611	615	7.5	7,680	577	7.0	7,744	612	7.3
Rapides	52,805	3,620	6.4	53,291	3,199	5.7	53,716	3,650	6.4
BATON ROUGE MSA	389,535	21,619	5.3	392,119	19,204	4.7	389,895	22,547	5.5
Ascension	57,303	3,010	5.0	57,705	2,716	4.5	57,344	3,107	5.1
East Baton Rouge	217,676	11,916	5.2	219,264	10,465	4.6	217,816	12,320	5.4
East Feliciana	7,553	438	5.5	7,598	393	4.9	7,566	484	6.0
Iberville	13,072	977	7.0	13,105	883	6.3	13,102	1,024	7.2
Livingston	63,396	3,367	5.0	63,798	3,057	4.6	63,469	3,564	5.3
Pointe Coupee	9,241	665	6.7	9,232	570	5.8	9,277	663	6.7
St. Helena	4,030	322	7.4	4,045	304	7.0	4,038	357	8.1
West Baton Rouge	12,256	673	5.2	12,349	607	4.7	12,262	716	5.5
West Feliciana	5,008	251	4.8	5,023	209	4.0	5,021	312	5.9
HAMMOND MSA	49,737	3,562	6.7	50,558	3,216	6.0	49,509	3,939	7.4
Tangipahoa	49,737	3,562	6.7	50,558	3,216	6.0	49,509	3,939	7.4
HOUMA-THIBODAU MSA	81,898	6,020	6.8	83,446	5,420	6.1	88,396	6,330	6.7
Lafourche	38,453	2,716	6.6	39,229	2,384	5.7	41,483	2,801	6.3
Terrebonne	43,445	3,304	7.1	44,217	3,036	6.4	46,913	3,529	7.0
LAFAYETTE MSA	193,578	14,441	6.9	196,256	13,034	6.2	202,879	15,939	7.3
Acadia	21,859	1,715	7.3	22,035	1,569	6.6	22,946	1,873	7.5
Iberia	26,593	2,690	9.2	26,886	2,453	8.4	27,873	2,924	9.5
Lafayette	102,893	6,607	6.0	104,580	5,871	5.3	107,784	7,306	6.3
St. Martin	20,362	1,638	7.4	20,604	1,499	6.8	21,370	1,828	7.9
Vermilion	21,871	1,791	7.6	22,151	1,642	6.9	22,906	2,008	8.1
LAKE CHARLES MSA	102,237	5,026	4.7	102,711	4,487	4.2	98,004	5,489	5.3
Calcasieu	98,565	4,866	4.7	99,031	4,344	4.2	94,482	5,310	5.3
Cameron	3,672	160	4.2	3,680	143	3.7	3,522	179	4.8
MONROE MSA	74,817	4,970	6.2	75,986	4,421	5.5	74,984	5,331	6.6
Ouachita	66,294	4,371	6.2	67,401	3,888	5.5	66,416	4,681	6.6
Union	8,523	599	6.6	8,585	533	5.8	8,568	650	7.1
NEW ORLEANS-METARIE MSA	555,425	31,919	5.4	564,120	28,275	4.8	559,696	35,359	5.9
Jefferson	202,209	11,107	5.2	205,407	9,887	4.6	203,747	12,349	5.7
Orleans	166,304	10,133	5.7	168,985	8,912	5.0	167,560	11,191	6.3
Plaquemines	9,520	551	5.5	9,584	484	4.8	9,622	590	5.8
St. Bernard	17,986	1,170	6.1	18,234	1,017	5.3	18,137	1,278	6.6
St. Charles	23,609	1,303	5.2	23,975	1,169	4.6	23,790	1,452	5.8
St. James	8,779	726	7.6	8,891	671	7.0	8,853	787	8.2
St. John the Baptist	18,442	1,363	6.9	18,734	1,248	6.2	18,581	1,462	7.3
St. Tammany	108,576	5,566	4.9	110,310	4,887	4.2	109,406	6,250	5.4
SHREVEPORT-BOSSIER CITY MSA	173,891	11,801	6.4	176,286	10,684	5.7	177,702	12,949	6.8
Bossier	52,533	2,908	5.2	53,243	2,638	4.7	53,689	3,249	5.7
Caddo	98,005	6,906	6.6	99,404	6,257	5.9	100,137	7,454	6.9
De Soto	9,756	768	7.3	9,863	696	6.6	9,978	859	7.9
Webster	13,597	1,219	8.2	13,776	1,093	7.4	13,898	1,387	9.1
NON-MSA PARISHES									
Allen	8,261	557	6.3	8,281	520	5.9	8,251	606	6.8
Assumption	8,040	785	8.9	8,170	702	7.9	8,466	825	8.9
Avoyelles	14,197	1,122	7.3	14,382	1,033	6.7	14,385	1,181	7.6
Beauregard (DeRidder MC)	13,884	958	6.5	13,926	865	5.8	13,970	965	6.5
Bienville	5,102	402	7.3	5,137	377	6.8	5,209	460	8.1
Caldwell	3,618	277	7.1	3,656	256	6.5	3,620	341	8.6
Catahoula	2,966	280	8.6	2,998	261	8.0	3,066	357	10.4
Claiborne	5,479	386	6.6	5,493	354	6.1	5,633	430	7.1
Concordia (Natchez, MS-LAMC)	6,454	657	9.2	6,526	559	7.9	6,660	634	8.7
East Carroll	1,848	295	13.8	1,836	254	12.2	1,894	282	13.0
Evangeline	11,373	879	7.2	11,512	794	6.5	11,701	974	7.7
Franklin	6,404	692	9.8	6,442	616	8.7	6,576	738	10.1
Jackson	6,518	363	5.3	6,560	319	4.6	6,563	437	6.2
Jefferson Davis	12,593	789	5.9	12,585	708	5.3	12,594	881	6.5
La Salle	5,637	348	5.8	5,778	317	5.2	5,898	462	7.3
Lincoln (Ruston MC)	19,026	1,296	6.4	19,393	1,115	5.4	18,870	1,378	6.8
Madison	3,378	348	9.3	3,382	297	8.1	3,445	366	9.6
Morehouse (Bastrop MC)	9,370	1,027	9.9	9,464	937	9.0	9,393	1,168	11.1
Natchitoches (Natchitoches MC)	14,437	1,129	7.3	14,738	993	6.3	14,651	1,169	7.4
Red River	3,489	234	6.3	3,465	213	5.8	3,571	244	6.4
Richland	7,527	640	7.8	7,677	540	6.6	7,704	736	8.7
Sabine	8,372	578	6.5	8,354	519	5.8	8,553	685	7.4
St. Landry (Opelousas MC)	28,971	2,500	7.9	29,460	2,261	7.1	29,974	2,765	8.4
St. Mary (Morgan City MC)	19,157	1,976	9.4	19,585	1,864	8.7	20,796	2,048	9.0
Tensas	1,423	160	10.1	1,388	135	8.9	1,518	168	10.0
Vernon (Fort Polk South MC)	15,404	1,341	8.0	15,205	1,225	7.5	15,969	1,330	7.7
Washington (Bogalusa MC)	15,506	1,091	6.6	15,623	979	5.9	15,715	1,289	7.6
West Carroll	3,604	598	14.2	3,623	510	12.3	3,574	610	14.6
Winn	4,688	402	7.9	4,679	397	7.8	4,746	455	8.7

In addition to nine (9) Metropolitan Statistical Areas (MSAs) in Louisiana, there are nine (9) Micropolitan Statistical Areas (MCs). Civilian Labor Force can be derived by adding employed and unemployed. For related information or data, please visit <http://www.bls.gov/iau/>.

LOUISIANA - PRIVATE EMPLOYMENT (Not Seasonally Adjusted)

	Average Weekly Earnings (\$)			Average Weekly Hours			Average Hourly Earnings (\$)		
	JAN	DEC	JAN	JAN	DEC	JAN	JAN	DEC	JAN
	2017	2016	2016	2017	2016	2016	2017	2016	2016
Total Private	818.80	803.62	794.60	35.4	35.2	35.3	23.13	22.83	22.51
Goods-Producing	1,120.66	1,118.81	1,118.57	41.8	41.7	41.8	26.81	26.83	26.76
Private Service-Providing	747.50	730.62	716.13	33.9	33.7	33.7	22.05	21.68	21.25
Construction	1,112.97	1,074.80	1,029.71	41.7	40.3	40.7	26.69	26.67	25.30
Manufacturing	1,044.83	1,077.76	1,103.76	41.2	42.1	42.0	25.36	25.60	26.28
Trade, Transportation, and Utilities	707.97	703.61	729.34	35.1	35.5	35.2	20.17	19.82	20.72
Financial Activities	1,003.22	954.69	957.75	36.1	36.3	37.5	27.79	26.30	25.54
Professional and Business Services	989.60	971.65	932.58	37.8	37.4	36.5	26.18	25.98	25.55
Education and Health Services	788.73	762.80	683.36	34.1	33.5	34.1	23.13	22.77	20.04
Leisure and Hospitality	362.61	360.72	352.98	26.9	26.7	26.5	13.48	13.51	13.32

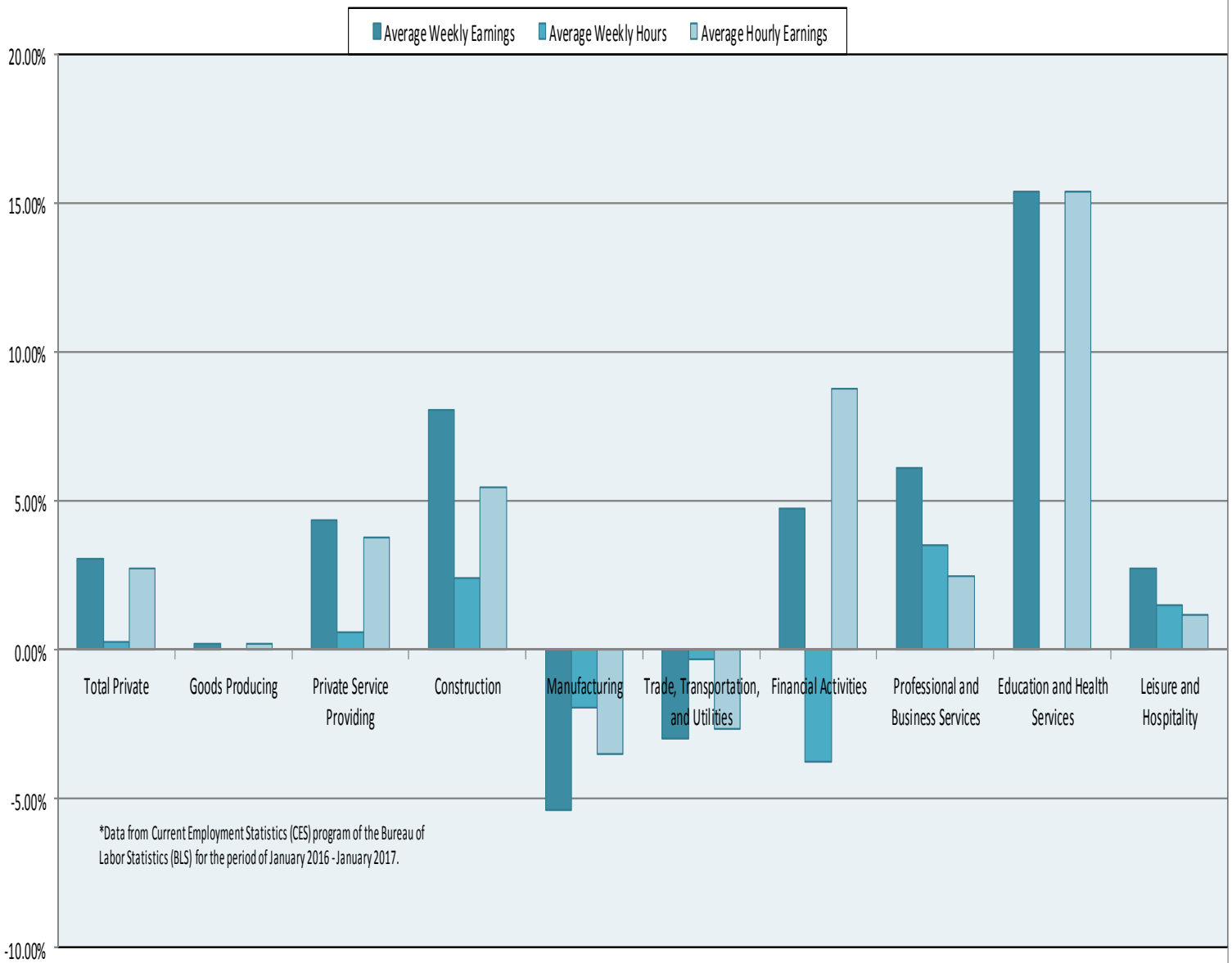
METROPOLITAN STATISTICAL AREAS (MSAs) - PRIVATE EMPLOYMENT
(Not Seasonally Adjusted)

	Average Weekly Earnings (\$)			Average Weekly Hours			Average Hourly Earnings (\$)		
	JAN	DEC	JAN	JAN	DEC	JAN	JAN	DEC	JAN
	2017	2016	2016	2017	2016	2016	2017	2016	2016
Alexandria	677.94	689.84	635.10	33.2	34.1	35.5	20.42	20.23	17.89
Baton Rouge	879.42	861.35	908.95	36.4	36.1	36.3	24.16	23.86	25.04
Hammond	531.02	503.87	568.62	29.9	30.1	32.4	17.76	16.74	17.55
Houma	845.64	870.35	851.07	34.8	36.6	37.1	24.30	23.78	22.94
Lafayette	856.13	851.65	867.60	36.4	36.9	37.3	23.52	23.08	23.26
Lake Charles	907.59	884.99	823.13	36.7	36.3	36.6	24.73	24.38	22.49
Monroe	716.56	711.89	636.31	36.3	36.1	34.1	19.74	19.72	18.66
New Orleans	873.76	856.25	831.91	34.4	34.1	33.9	25.40	25.11	24.54
Shreveport	677.57	666.62	632.96	34.1	33.6	34.4	19.87	19.84	18.40

AVERAGE HOURS AND EARNINGS FOR PRODUCTION WORKERS IN MANUFACTURING
AND SELECTED NONMANUFACTURING INDUSTRIES (Not Seasonally Adjusted)

	Production Workers	Average Weekly Earnings (\$)			Average Weekly Hours			Average Hourly Earnings (\$)			
		JAN	JAN	DEC	JAN	JAN	DEC	JAN	JAN	DEC	JAN
		2017	2017	2016	2016	2017	2016	2016	2017	2016	2016
Mining & Logging	24,900	1,313.94	1,436.39	1,495.95	42.1	47.8	46.1	31.21	30.05	32.45	
Manufacturing	103,800	897.99	927.94	968.69	42.1	43.0	43.4	21.33	21.58	22.32	
Durable Goods	47,600	944.32	955.83	942.33	41.6	42.5	41.9	22.70	22.49	22.49	
Nondurable Goods	56,200	860.09	905.32	993.22	42.6	43.4	44.8	20.19	20.86	22.17	

Over-The-Year Percentage Change in Avg. Weekly Earnings, Avg. Weekly Hours, and Avg. Hourly Earnings for LA Private Employment



Labor Market Questions and Answers!

When will the new projections data be included in the website?

The new projections data for the short-term 2014-2017 and long-term 2014-2024 are now on the website. http://www.laworks.net/LaborMarketInfo/LMI_employmentprojections.asp This web page shows industry and occupational information sorted by education and all occupations. The data includes occupations that are the fastest growing and the ones that will add the most jobs.

Glossary & Technical Notes

Average Hourly Earnings/Average Weekly Earnings/ Average Weekly Hours (CES/BLS) - average total money earnings, in the survey week (i.e., the week that includes the twelfth of the month), of production workers plus nonsupervisory workers not in production, including overtime, paid vacation and sick leave.

Civilian Labor Force - that portion of the population, age sixteen or older, which is employed or unemployed and actively seeking employment during the reference week of the twelfth of the month.

Employed - the members of the labor force who worked for pay or profit, or had a job from which they were temporarily absent because of illness, vacation, labor dispute, or other reasons not reflecting a shortage of work, or who worked fifteen hours or more as unpaid workers in an enterprise operated by a member of the family.

Unemployed - the members of the labor force who did not work but were seeking work or were awaiting recall from layoffs or the beginning of a new job within thirty days.

Unemployment Rate - the number of unemployed persons expressed as a percentage of the labor force.

Continued Claim - each week claimed subsequent to the filing of the initial claim for a week of unemployment compensation.

Current Employment Statistics (CES) - estimates of nonfarm employment and production workers hours and earnings by industry. They are produced as part of a nationwide program, in cooperation with the Bureau of Labor Statistics (BLS), for the state and each metropolitan statistical area (MSA) from a sample of employing establishments.

Current Population Survey (CPS) - a monthly household survey of the U.S. population conducted for the Bureau of Labor Statistics (BLS) by the Bureau of the Census, of 60,000 selected households. Respondents are interviewed to obtain information on the employment status of each household member age 16 and over, during the reference week of the twelfth.

Durable Goods - items with a normal life expectancy of three years or more. Automobiles, furniture, household appliances, and mobile homes are examples.

Extended Layoff Event - Fifty or more initial claims for unemployment insurance benefits from an establishment during a 5-week period, with at least 50 workers separated for more than 30 days.

Initial Claims - a new claim, filed to open a claim for unemployment compensation.

Metropolitan Statistical Area (MSA) - a geographical area comprised of a parish generally containing a central city (or twin cities) of 50,000 inhabitants or more and contiguous parishes that are socially and economically integrated with the central city.

Micropolitan Statistical Area (MC) - a geographical area comprised of a parish containing a central city of at least 10,000 but less than 50,000 inhabitants and contiguous parishes that are socially and economically integrated with the central city.

NAICS (North American Industry Classification System) - an industry classification system that groups establishments into industries based on the activities in which they are primarily engaged.

Nonfarm Employment - employment by place of work that does not include the self employed, unpaid family workers, domestics, or agriculture workers. All estimates of nonfarm employment in this publication are in cooperation with the U.S. Department of Labor Bureau of Labor Statistics and include all full-time and part-time workers who were employed during the pay period including the twelfth of the month.

Nondurable Goods - items that generally last for only a short period of time (less than three years). Food, beverages, apparel, and gasoline are common examples.

Seasonally Adjusted - monthly data that is adjusted to minimize the changes in any time series which result from normal annual occurrences such as Christmas, summer vacations, and weather patterns.

Separation - The release of persons from an employer as part of a mass layoff event. Such releases involve both persons subject to recall and those who are terminated by the establishment.

Subsector - refers to the three-digit NAICS code, which will fall under the particular sector. Example: If Manufacturing (31-33) is the industry sector, then Food manufacturing (311), Paper manufacturing (322), Chemical manufacturing (325), Transportation equipment manufacturing (336), are some of the subsectors of manufacturing.

Supersector - refers to these five categories: Total Nonfarm, Total Private, Goods-Producing, Service-Providing, and Private Service-Providing.

Summary Industry Sector - a combination of industry sectors. A summary sector may or may not be published. The summary industry sectors are Mining & Logging; Construction; Manufacturing; Trade, Transportation, & Utilities; Information; Financial Activities; Professional & Business Services; Education & Health Services; Leisure & Hospitality; Other Services; and Government.

Industry Sector - 20 industry sectors based on two-digit NAICS code. They are Agriculture, Forestry, Fishing and Hunting (11), Mining (21), Utilities (22), Construction (23), Manufacturing (31-33), Wholesale Trade (42), Retail Trade (44-45), Transportation and Warehousing (48-49), Information (51), Finance and Insurance (52), Real Estate and Rental and Leasing (53), Professional and Technical Services (54), Management of Companies and Enterprises (55), Administrative and Waste Services (56), Educational Services (61), Health Care and Social Assistance (62), Arts, Entertainment, and Recreation (71), Accommodation and Food Services (72), Other Services (81), and Public Administration (92).

Constraints of the monthly civilian labor force and nonfarm employment estimates:

The civilian labor force estimates are derived by a monthly survey of approximately 723 households throughout Louisiana following the Bureau of Labor Statistics (BLS) methodology. The US Census Bureau conducts the survey by calling randomly selected households and providing BLS with survey results. Households are asked for the number of residents who are sixteen and over and whether they were working or actively looking for work during the week of the twelfth of the month. Responses to these questions become part of the formula to determine the number of people employed and the number of individuals unemployed for the state, MSAs, and each parish every month.

The nonfarm employment estimates are derived from responses received from the monthly BLS survey of approximately 7,000 businesses across the state. Responses capture employment activity during the 12th of each month. This survey relies on responses from these businesses to produce industry employment levels for the state and all metropolitan statistical areas.

Both data sets are comparable with estimates for the U.S., all 50 states, and 387 metropolitan areas across the U.S.

LABOR MARKET INFORMATION WEB LINKS

Civilian Labor Force - LAUS (Local Area Unemployment Statistics) –

Employment, Unemployment and Unemployment Insurance Rate

LA <https://www.louisianaworks.net/hire/altentry.asp?action=lmiguest>

Left menu: Historical Data Analysis – Employment and Wage Data – Labor Force Data – Labor Force Employment and Unemployment (LAUS)

States <http://data.bls.gov/cgi-bin/dsrv?la>

US <http://data.bls.gov/pdq/querytool.jsp?survey=ln>

Consumer Price Index (US) <http://data.bls.gov/cgi-bin/surveymost?cu>

Download Louisiana Workforce Commission’s Labor Market Information Products

LA http://www.laworks.net/Downloads/Downloads_LMI.asp

Employment and Wage Data – Quarterly Census of Employment and Wages (QCEW)

LA <https://www.louisianaworks.net/hire/altentry.asp?action=lmiguest>

Left menu: Historical Data Analysis – Employment and Wage Data – Industry Data – Quarterly Census of Employment and Wages (QCEW)

States & US <http://data.bls.gov/cgi-bin/dsrv?en>

NAICS (North American Industry Classification System) Codes Look-Up Table

<http://www.census.gov/eos/www/naics/>

Nonfarm Employment, Hours and Earnings - CES (Current Employment Statistics)

LA <https://www.louisianaworks.net/hire/altentry.asp?action=lmiguest>

Left menu: Historical Data Analysis – Employment and Wage Data – Industry Data – Current Employment Statistics (CES) – select Show Earnings Data under table

States <http://data.bls.gov/cgi-bin/dsrv?sm>

US <http://data.bls.gov/cgi-bin/dsrv?ce>

Unemployment Insurance Claimants Data (by Occupation) - Unemployment Insurance (UI)

LA <https://www.louisianaworks.net/hire/altentry.asp?action=lmiguest>

Left menu: Historical Data Analysis – Employment and Wage Data – Labor Force Data – Unemployment Insurance Claimants

Unemployment Insurance Claims Data (by Region, Parish, Industry) - UI

LA http://www.laworks.net/LaborMarketInfo/LMI_UIClaimsReportMenu.asp

States & US <http://ows.doleta.gov/unemploy/claims.asp>

Unemployment Rates for all States - LAUS

States <http://www.bls.gov/web/laus/laumstrk.htm>



Office of Occupational Information Services
 Research & Statistics Division
 Post Office Box 94094
 Baton Rouge, LA 70804-9094

Data for: 01/2017



Workforce At A Glance is published monthly by the Louisiana Workforce Commission. The material in this publication is not copyrighted and may be reproduced; however, the LWC would appreciate credit for the material used and a copy of the reprint.

LMI Staff:

Sachin Chintawar, LMI Manager
 Kelsey Canizaro
 Jeffrey Duplantier
 Kelly Ebey
 Deborah Williams

Contributors:

Kelsey Canizaro
 Karen Clark
 Natalie Foster-Lawrence
 Karl Gleichman
 Mark Jones
 Sean Painter
 Tara Robinson

Contact Us:

Phone (225) 342-3141; Fax (225) 219-7759
 Toll Free (888) 302-7662
 Email lmi@lwc.la.gov

John Bel Edwards, Governor
 State of Louisiana

Ava Dejoie, Executive Director
 Louisiana Workforce Commission

Connect With Us:

Website: <https://www.laworks.net>

 <https://www.facebook.com/LouisianaWorks>

 <https://twitter.com/LouisianaWorks>

 <https://www.linkedin.com/company/louisiana-workforce-commission>

 <http://instagram.com/louisianaworks>