

Louisiana Workforce

at a glance

www.laworks.net

Updated May 25, 2011 for Shreveport MSA on Page 9

Release Date: March 10, 2011

Data For: January 2011

In This Issue

2 Economic Comparison

3 NSA State & Area Employment

4-7 Data Trends (Graphs)

8-10 Nonfarm Employment

11-12 Unemployment Rates & Civilian Labor Force

13 Average Hours & Earnings

14 UI Claimants & Labor Market Q & A

15-16 Glossary, Data Constraints, Downloads & Web Links

17 2011 Press Release Schedule



Statewide Overview

Seasonally adjusted nonfarm employment for Louisiana was estimated at 1,887,200 in January 2011. This represents a loss of 3,200 jobs from the previous month, but a 9,500 job increase from January 2010. The largest gain from December was seen in professional and business services, which added 1,700 jobs. The government sector recorded the largest over-the-year change, losing 9,400 jobs from last January.

Over the month, two of the 11 industry sectors had increases in employment, eight showed declines, and one sector showed no change. With professional and business services, the only other sector to show a gain from December was manufacturing, which added 400 jobs. The largest over-the-month decline occurred in government, which lost 1,700 jobs. The construction sector dropped 1,600 jobs over the month, while financial activities fell by 700. Both the trade, transportation, and utilities and education and health services sectors saw 400 fewer jobs than last month, while other services declined by 300. Both the mining and logging and leisure and hospitality sectors showed a small decrease of 100 from December. The information sector was unchanged.

Over the year, seven of the eleven industry sectors showed an increase from the January 2010 figures, while four lost employment. The largest gain from last year occurred in professional and business services, which added 4,800 jobs. Trade, transportation, and utilities added 4,500, while education and health services added 4,400. The information sector gained 3,800 jobs compared to last year, while leisure and hospitality added 3,200. Mining and logging was up 2,400 from last January, while other services added 500 jobs. After government, the largest over-the-year decline occurred in construction, which fell by 3,500 jobs. Manufacturing lost 1,000 jobs over the year, while financial activities fell by 200.

The January 2011 preliminary seasonally adjusted unemployment rate for Louisiana was 7.8 percent, an increase from the December revised rate of 7.7 percent. The national unemployment rate for January was 9.0 percent, a decrease from the December rate of 9.4 percent. Total unemployment in the state for January was 161,916. The state civilian labor force decreased to 2,088,377 with a decrease in total employment to 1,926,461.

Economic Indicators

Seasonally Adjusted

Civilian Labor Force

	United States	Louisiana
Labor Force	153,186,000	2,088,377
Employed	139,323,000	1,926,461
Unemployed	13,863,000	161,916
Unemployment Rate	9.0	7.8

Nonfarm Wage and

Salary Employment

	JAN 2011	JAN 2011
	United States	Louisiana
Total Nonfarm	130,265,000	1,887,200
Mining and Logging	732,000	52,100
Construction	5,455,000	120,300
Manufacturing	11,617,000	137,500
Trade, Transportation, and Utilities	24,739,000	367,300
Information	2,698,000	28,200
Financial Activities	7,606,000	92,100
Professional and Business Services	16,929,000	194,200
Education and Health Services	19,768,000	273,200
Leisure and Hospitality	13,062,000	196,000
Other Services	5,424,000	66,000
Government	22,235,000	360,300

All Employees Average Hours & Earnings

(Not Seasonally Adjusted)

Construction

	JAN 2011	JAN 2011
	United States	Louisiana
Average Weekly Earnings	\$ 931.11	\$ 910.14
Average Weekly Hours	36.4	42.0
Average Hourly Wages	\$ 25.58	\$ 21.67

Manufacturing

Average Weekly Earnings	\$ 956.36	\$ 926.80
Average Weekly Hours	40.2	40.0
Average Hourly Wages	\$ 23.79	\$ 23.17

Louisiana Unemployment Insurance Activities

Claims

	JAN 2011
Initial New & Renewals	18,849
Continued Weekly Intrastate Only	222,052

Insured Unemployment Rate

	2.8
--	-----

Benefits

Number of First Payment	11,831
Benefits Paid (000's)	\$ 37,425
Weeks Compensated	192,846
Average Wkly. Benefit Amount	\$ 195.78
Average Duration of Claim (weeks)	16.3
Exhaustions	5,614

United States Consumer Price Index

	JAN 2011
All Urban Consumers	220.2

The civilian labor force and nonfarm **estimates** are prepared according to Bureau of Labor Statistics (BLS) methodology and are comparable with the U.S. and other states' data. For more information, go to page 15.

Economic Comparison

Seasonally Adjusted	PRELIMINARY JANUARY 2011		REVISED DECEMBER 2010		REVISED JANUARY 2010	
	United States	Louisiana	United States	Louisiana	United States	Louisiana
Civilian Labor Force						
Labor Force	153,186,000	2,088,377	153,690,000	2,089,232	153,353,000	2,064,325
Employed	139,323,000	1,926,461	139,206,000	1,929,214	138,511,000	1,917,596
Unemployed	13,863,000	161,916	14,485,000	160,018	14,842,000	146,729
Unemployment Rate	9.0	7.8	9.4	7.7	9.7	7.1
Nonfarm Wage and Salary Employment	JAN 2011	JAN 2011	DEC 2010	DEC 2010	JAN 2010	JAN 2010
	United States	Louisiana	United States	Louisiana	United States	Louisiana
Total Nonfarm	130,265,000	1,887,200	130,229,000	1,890,400	129,281,000	1,877,700
Mining and Logging	732,000	52,100	731,000	52,200	667,000	49,700
Construction	5,455,000	120,300	5,487,000	121,900	5,585,000	123,800
Manufacturing	11,617,000	137,500	11,568,000	137,100	11,465,000	138,500
Trade, Transportation, and Utilities	24,739,000	367,300	24,742,000	367,700	24,536,000	362,800
Information	2,698,000	28,200	2,699,000	28,200	2,737,000	24,400
Financial Activities	7,606,000	92,100	7,616,000	92,800	7,666,000	92,300
Professional and Business Services	16,929,000	194,200	16,898,000	192,500	16,513,000	189,400
Education and Health Services	19,768,000	273,200	19,755,000	273,600	19,371,000	268,800
Leisure and Hospitality	13,062,000	196,000	13,065,000	196,100	12,931,000	192,800
Other Services	5,424,000	66,000	5,419,000	66,300	5,322,000	65,500
Government	22,235,000	360,300	22,249,000	362,000	22,488,000	369,700

All Employees Average Hours & Earnings

Construction	United States (Not Seasonally Adjusted)			Louisiana (Not Seasonally Adjusted)		
	JAN 2011	DEC 2010	JAN 2010	JAN 2011	DEC 2010	JAN 2010
Average Weekly Earnings	\$ 931.11	\$ 966.55	\$ 929.20	\$ 910.14	\$ 929.15	\$ 869.53
Average Weekly Hours	36.4	37.8	36.8	42.0	42.7	40.9
Average Hourly Wages	\$ 25.58	\$ 25.57	\$ 25.25	\$ 21.67	\$ 21.76	\$ 21.26
Manufacturing						
Average Weekly Earnings	\$ 956.36	\$ 960.84	\$ 923.42	\$ 926.80	\$ 968.61	\$ 1,004.76
Average Weekly Hours	40.2	40.8	39.7	40.0	41.2	41.9
Average Hourly Wages	\$ 23.79	\$ 23.55	\$ 23.26	\$ 23.17	\$ 23.51	\$ 23.98

Louisiana Unemployment Insurance Activities

Claims	JAN 2011	DEC 2010	JAN 2010	% Change From	
				DEC 2010	JAN 2010
Initial New & Renewals	18,849	15,964	16,964	18.1	11.1
Continued Weekly Intrastate Only	222,052	182,123	236,502	21.9	-6.1
Insured Unemployment Rate*	2.8	2.7	3.4	1.8	-19.3
Benefits					
Number of First Payment	11,831	9,899	11,091	19.5	6.7
Benefits Paid (000's)	\$ 37,425	\$ 32,633	\$ 50,176	14.7	-25.4
Weeks Compensated	192,846	168,756	218,974	14.3	-11.9
Average Wkly. Benefit Amount	\$ 195.78	\$ 195.26	\$ 231.54	0.3	-15.4
Average Duration of Claim (w eeks)	16.3	17.0	19.7	-4.3	-17.4
Exhaustions	5,614	4,176	5,985	34.4	-6.2

* Insured unemployment rate is for the week including the 12th of the month.

United States Consumer Price Index

	JAN 2011	% Change From:		DEC 2010	% Change From:	
	Index	Prior Month	Prior Year	Index	Prior Month	Prior Year
All Urban Consumers	220.2	0.5	1.6	219.2	0.2	1.5

Not Seasonally Adjusted State and Area Employment

Not seasonally adjusted nonfarm employment for Louisiana was estimated at 1,873,500 for January 2011. Over the month, employment lost 25,800 jobs from December, while over the year, employment gained 16,900 jobs. Goods-producing employment fell by 4,800 over the month, while the service-providing employment lost 21,000 jobs compared to December. Over the year, goods-producing industries gained 600 jobs while the service-providing sector gained 16,300.

Total nonfarm employment in January for the Alexandria MSA was 62,900, a decrease of 1,500 jobs from December, but a gain of 400 from a year ago. The goods-producing sector fell by 200 over the month, and lost 100 jobs over the year. Service-providing employment lost 1,300 from December, but gained 500 jobs from January 2010.

Total nonfarm employment for the Baton Rouge MSA was estimated at 358,900 for January 2011. Over the month, the MSA showed a loss of 6,900 jobs, while over the year, nonfarm employment decreased by 800. Goods-producing employment showed a decrease of 1,000 from last month and a loss of 1,300 from last year. The service-providing sector fell by 5,900 jobs over the month, while gaining 500 jobs over the year.

The Houma MSA nonfarm employment was estimated at 93,600 for January 2011. This shows an over-the-month decrease of 900 but an over-the-year gain of 3,800. The goods-producing sector showed a loss of 400 over the month, while the service-providing sector lost 500 jobs from December. Over the year, the goods-producing sector gained 500 positions, while the service-providing sector added 3,300.

Total nonfarm employment for the Lafayette MSA was estimated at 146,300 for January 2011. This represents a decrease from December of 2,600 jobs but an increase of 2,700 jobs from last year. Over the month, goods-producing employment fell by 500, while the service-providing sector decreased by 2,100. Over the year, goods-producing employment increased by 300 jobs, while the service-providing sector increased by 2,400 jobs.

Total nonfarm employment for the Lake Charles MSA was 88,300 for January 2011. This represents a loss of 900 jobs from December and a decline of 500 jobs over the year. Over the month, the goods-producing sector lost 200 jobs, while service-providing employment fell by 700 jobs. The goods-producing sector lost 1,000 jobs from last January, while the service-providing sector increased by 500 jobs over the year.

Total nonfarm employment for the Monroe MSA was estimated at 74,600 for January 2011, showing a loss of 1,100 jobs both over the month and over the year. The goods-producing sector lost 100 jobs over the month, but gained 100 jobs over the year. The service-providing sector lost 1,000 jobs from December and 1,200 jobs over the year.

Total nonfarm employment for the New Orleans MSA was 518,800 for January 2011. Over the month the MSA lost 6,200 jobs, while over the year saw an increase of 6,300 positions. Goods-producing employment showed a loss of 400 from last month, and declined by 1,400 positions from last year. The service-providing sector fell by 5,800 from December but added 7,700 jobs from January 2010.

Total nonfarm employment for the Shreveport MSA was 175,200 for January 2011, a decrease of 2,500 jobs from last month but a gain of 2,100 from January 2010. Goods-producing employment showed a decrease of 400 from December, but a gain of 2,000 from January 2010. Service-providing employment lost 2,100 jobs over the month but added 100 jobs compared to last year.

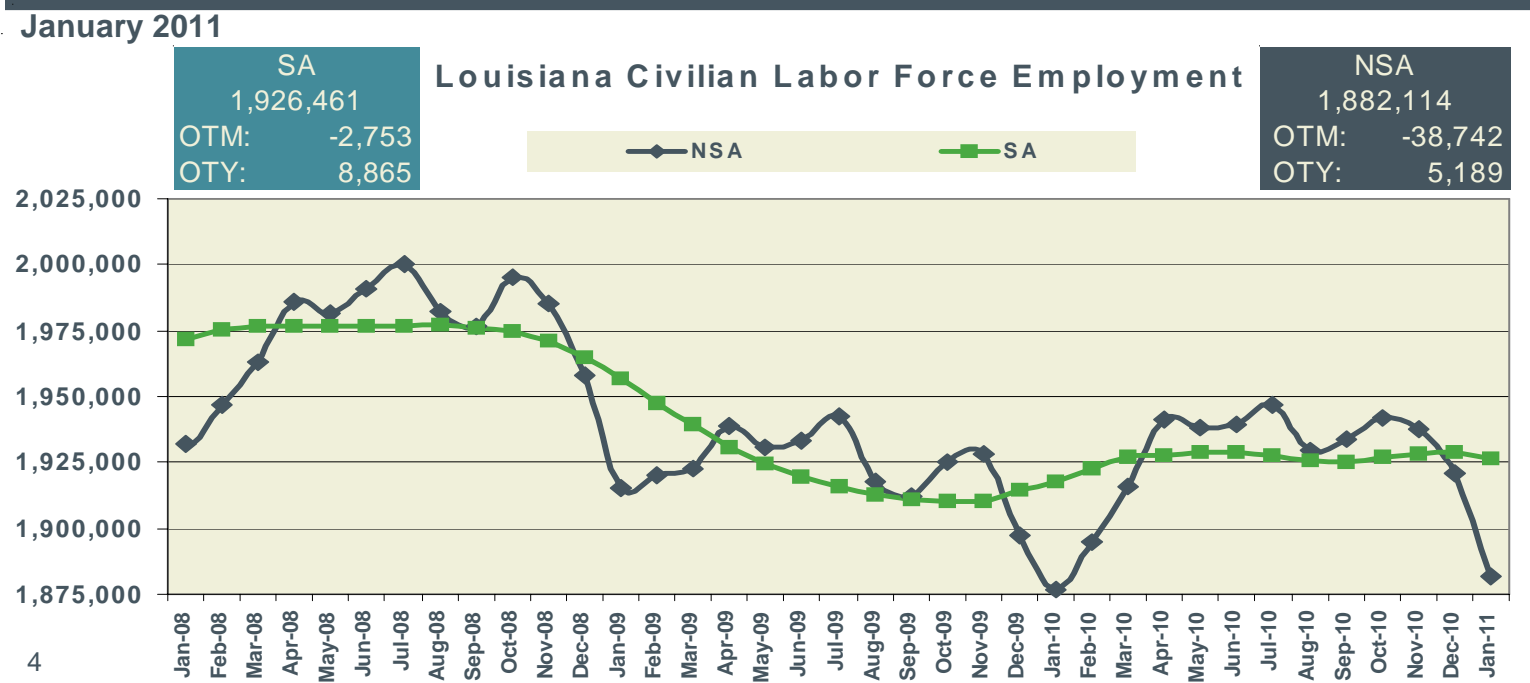
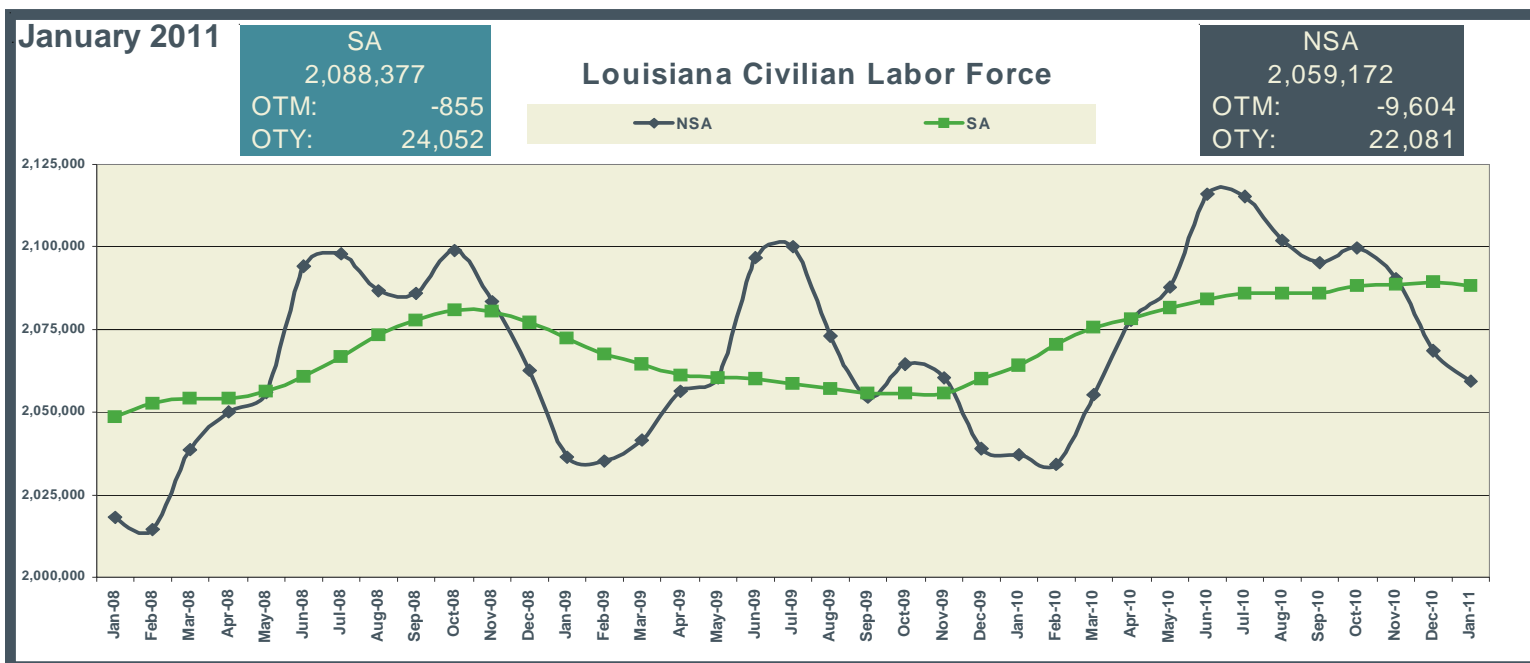
Keys to Graphs

The following graphs have been designed to reflect the over-the-year trends in the statistical data. Below are the most frequently used abbreviations.

- OTM over-the-month change in employment
- OTY over-the-year change in employment
- SA seasonally adjusted estimates
- NSA not seasonally adjusted estimates

Graphs for statewide reflect seasonally adjusted (SA) estimates compared to not seasonally adjusted (NSA) data.

Metropolitan Statistical Areas (MSAs) graphs denote nonfarm employment levels compared to a three year red trend line of the estimated employment. The navy lines in the graphs are the over-the-month changes for each year.

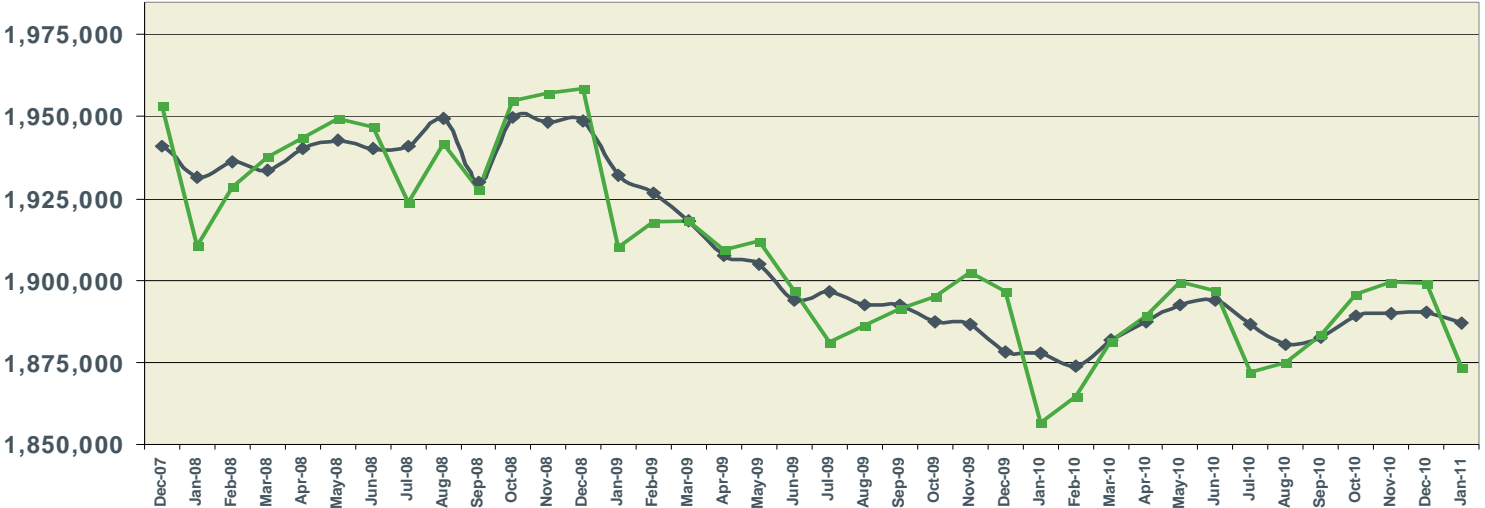


January 2011

SA
1,887,200
OTM: -3,200
OTY: 9,500

Louisiana Nonfarm Employment

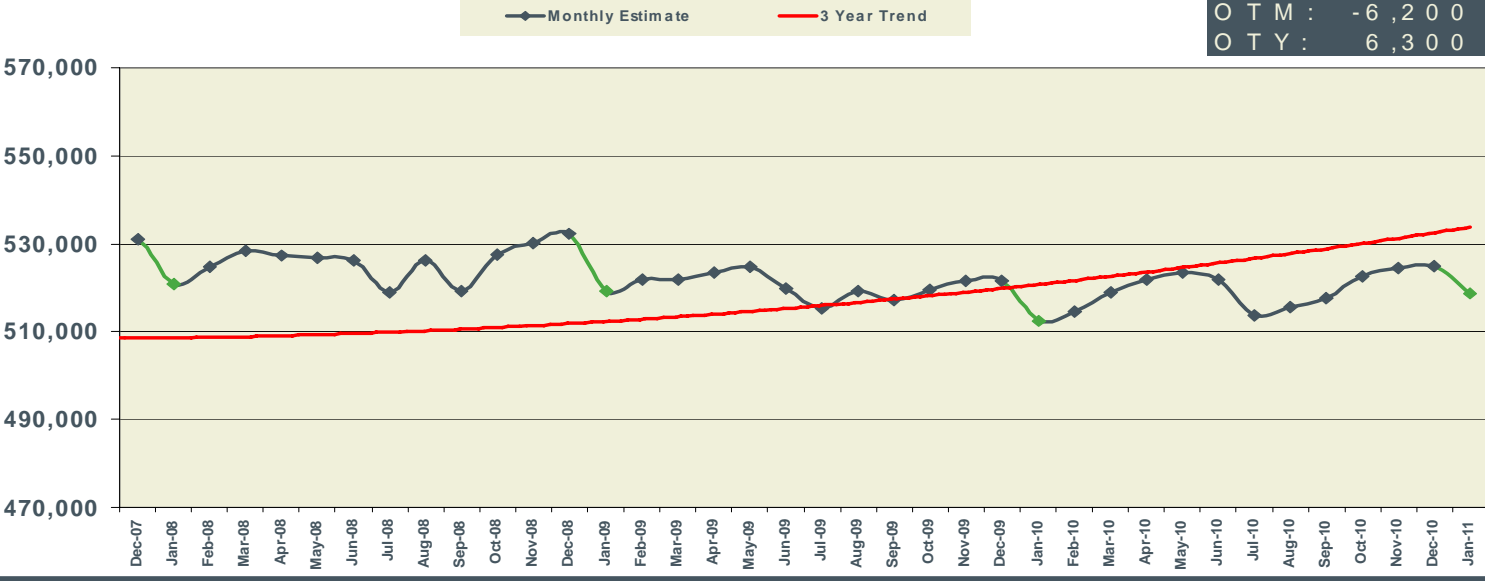
NSA
1,873,500
OTM: -25,800
OTY: 16,900



January 2011

New Orleans MSA Nonfarm Employment

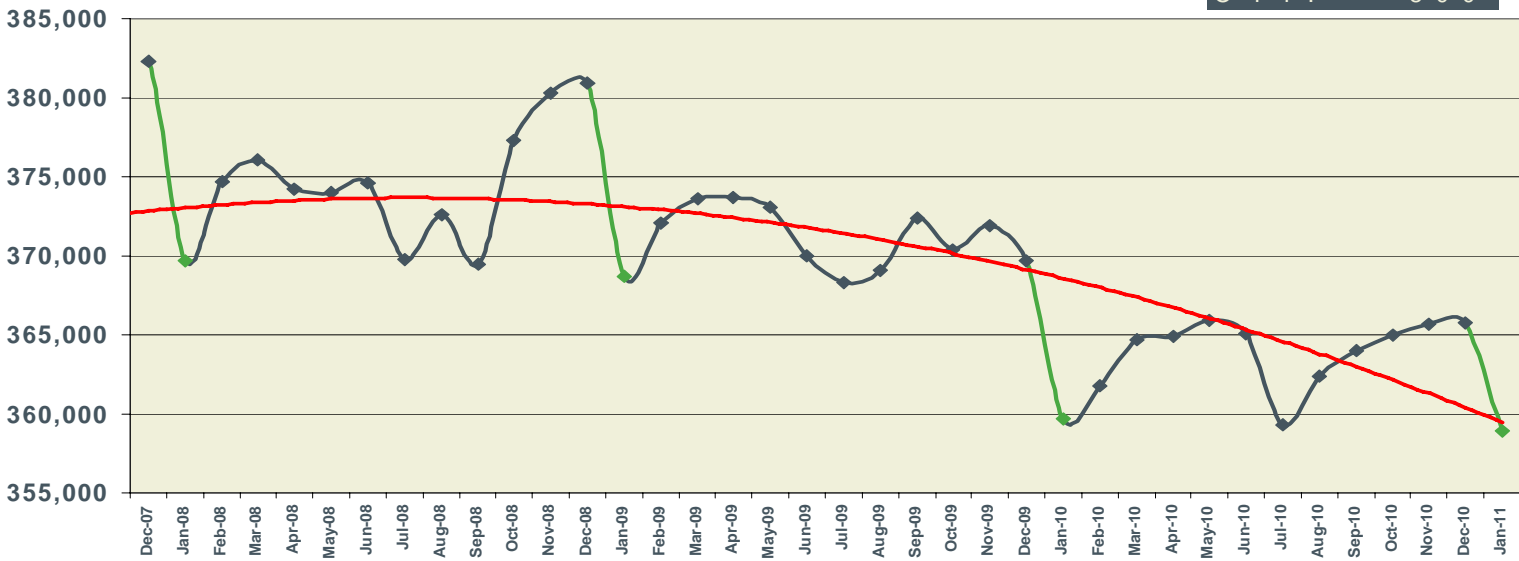
NSA
518,800
OTM: -6,200
OTY: 6,300



January 2011

Baton Rouge MSA Nonfarm Employment

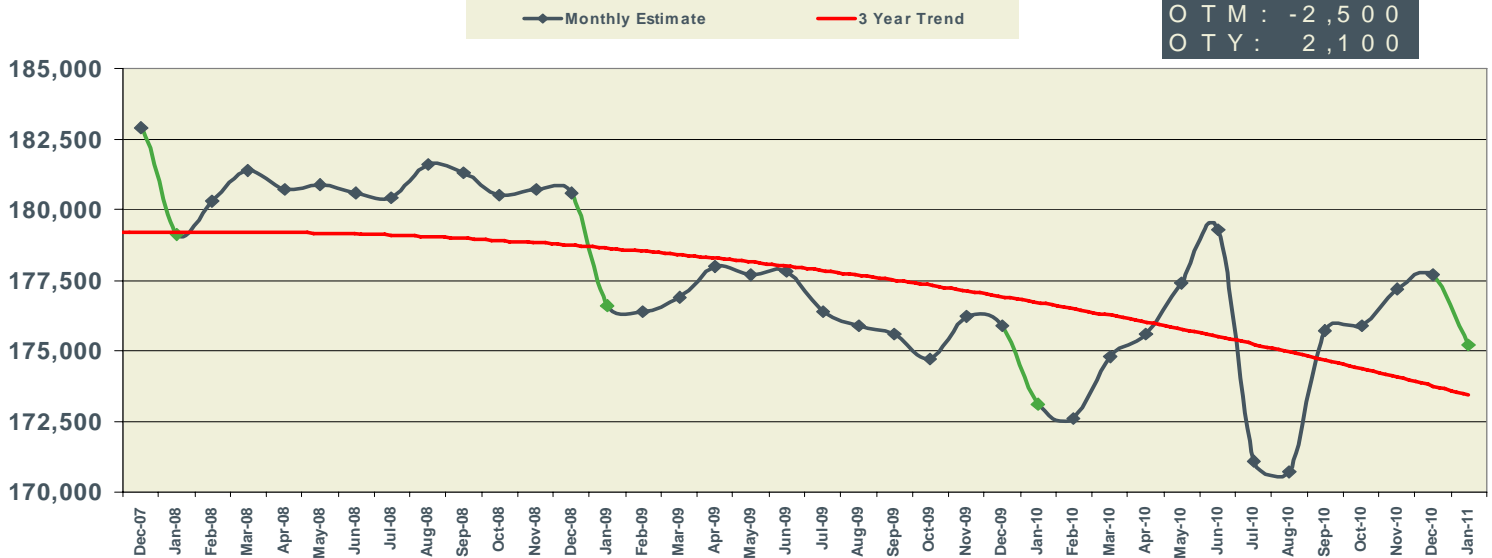
NSA
358,900
OTM: -6,900
OTY: -800



January 2011

Shreveport MSA Nonfarm Employment

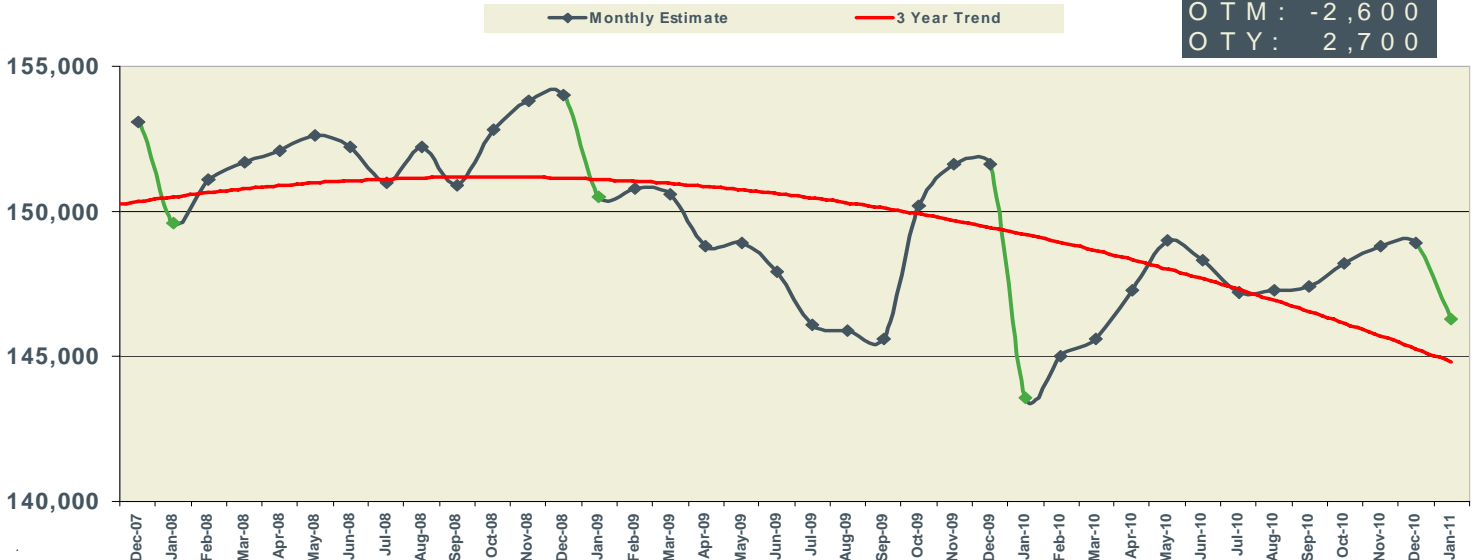
NSA
175,200
OTM: -2,500
OTY: 2,100



January 2011

Lafayette MSA Nonfarm Employment

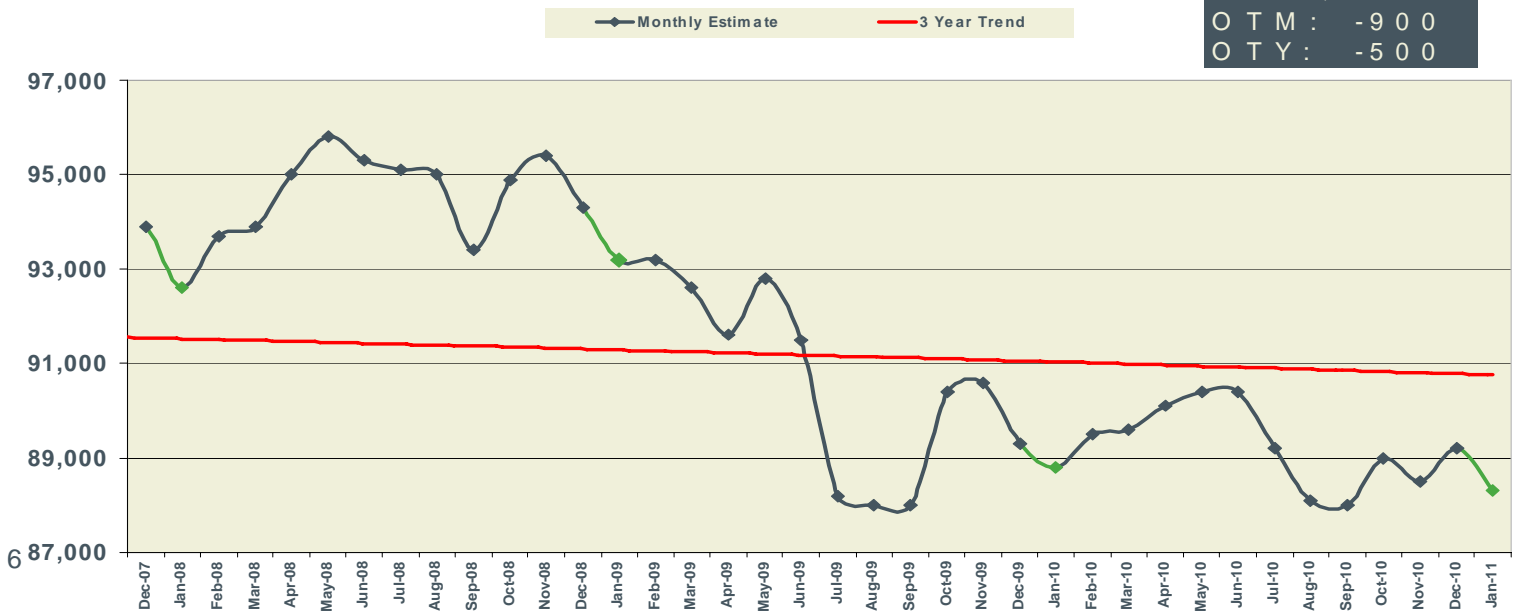
NSA
146,300
OTM: -2,600
OTY: 2,700



January 2011

Lake Charles MSA Nonfarm Employment

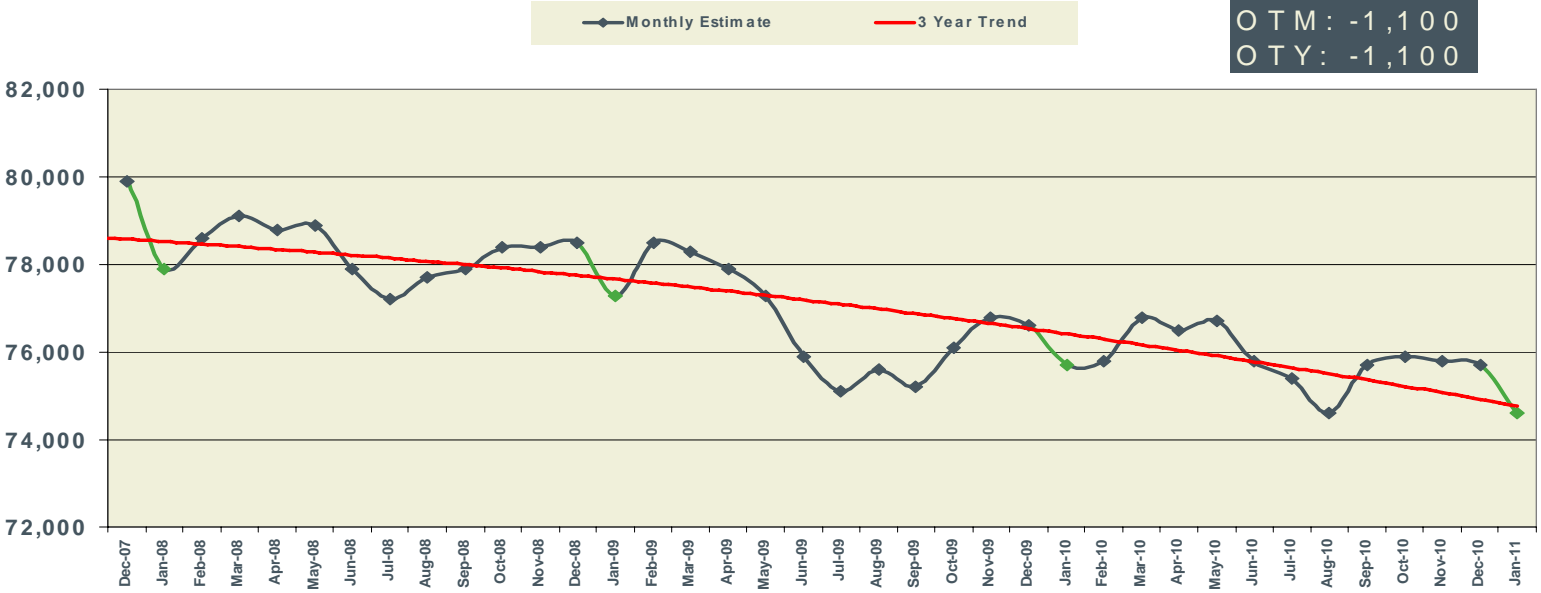
NSA
88,300
OTM: -900
OTY: -500



January 2011

Monroe MSA Nonfarm Employment

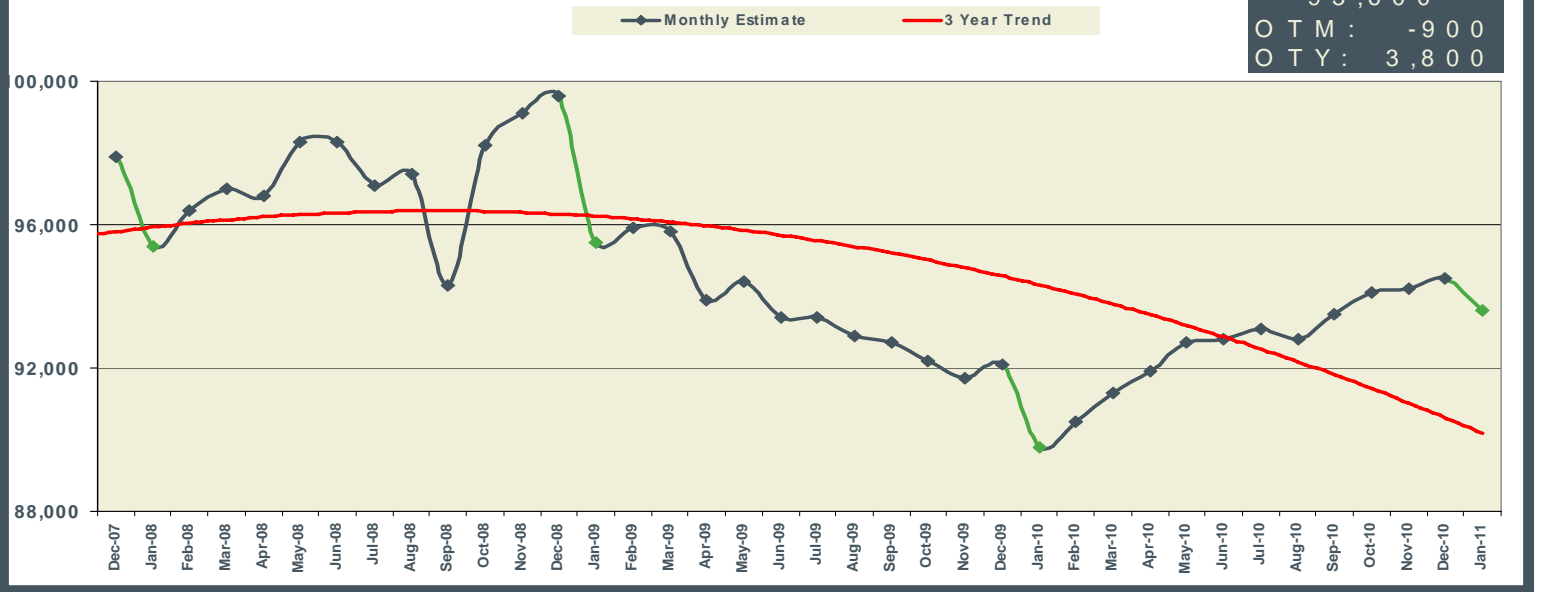
NSA
74,600
OTM: -1,100
OTY: -1,100



January 2011

Houma MSA Nonfarm Employment

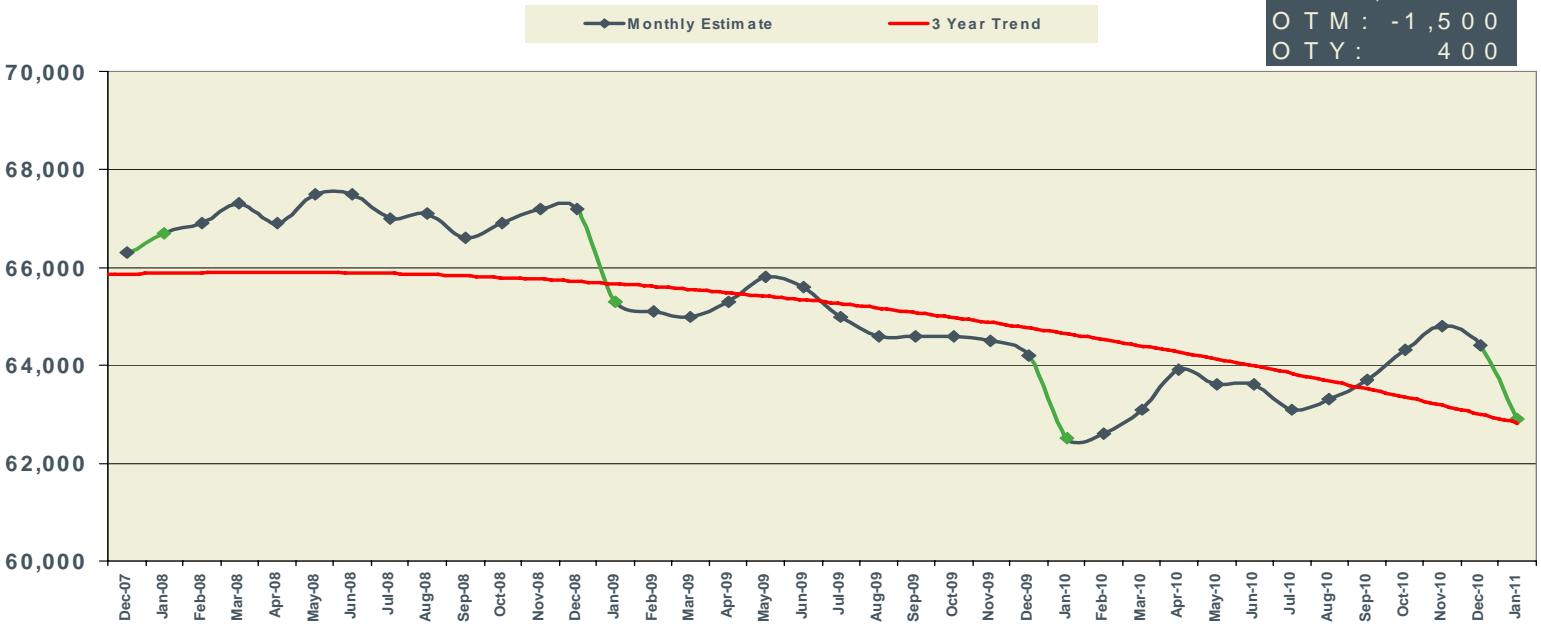
NSA
93,600
OTM: -900
OTY: 3,800



January 2011

Alexandria MSA Nonfarm Employment

NSA
62,900
OTM: -1,500
OTY: 400



LOUISIANA & MSAs NONFARM EMPLOYMENT

	NEW ORLEANS-								
	LOUISIANA			METAIRIE-KENNER MSA			BATON ROUGE MSA		
	PREL JAN 2011	REV DEC 2010	REV JAN 2010	PREL JAN 2011	REV DEC 2010	REV JAN 2010	PREL JAN 2011	REV DEC 2010	REV JAN 2010
<i>Not Seasonally Adjusted</i>									
Total Nonfarm	1,873,500	1,899,300	1,856,600	518,800	525,000	512,500	358,900	365,800	359,700
Total Private	1,516,400	1,534,700	1,490,000	438,200	443,500	430,200	283,200	287,700	283,400
Goods-Producing	307,500	312,300	306,900	68,400	68,800	69,800	63,600	64,600	64,900
Mining & Logging	51,500	52,300	49,400	7,500	7,500	7,500	2,000	2,000	1,700
Oil & Gas Extraction	8,500	8,600	8,400	2,800	2,900	2,900			
Crude Petroleum & Natural Gas Extraction	7,800	8,000	7,900						
Support Activities for Mining	39,100	39,600	37,300						
Drilling Oil & Gas Wells	9,100	9,000	8,100						
Construction	119,200	121,800	120,900	30,000	29,800	29,800	37,000	37,800	38,600
Construction of Buildings	20,900	21,600	22,900				6,800	6,800	7,400
Residential Building Construction	5,600	5,800	5,900						
Nonresidential Building Construction	15,300	15,800	17,000				6,200	6,000	6,500
Heavy & Civil Engineering Construction	38,600	39,700	38,100	8,800	8,600	8,100	12,900	13,200	13,500
Utility System Construction	18,800	19,200	18,000						
Specialty Trade Contractors	59,700	60,500	59,900	15,700	15,800	16,100	17,300	17,800	17,700
Manufacturing	136,800	138,200	136,600	30,900	31,500	32,500	24,600	24,800	24,600
Durable Goods	68,900	68,000	69,900	15,100	15,500	16,600			
Transportation Equipment Manufacturing	16,300	16,500	17,800	7,200	7,200	8,600			
Ship & Boat Building	11,400	11,500	11,900	5,700	5,800	6,000			
Nondurable Goods	67,900	70,200	66,700	15,800	16,000	15,900	16,700	16,900	16,500
Food Manufacturing	15,500	16,800	15,500						
Paper Manufacturing	7,200	7,300	7,000						
Petroleum & Coal Products Mfg. & Chemical Mfg.									
Petroleum & Coal Products Manufacturing	11,500	11,500	11,400						
Chemical Manufacturing	22,800	22,700	22,200	4,400	4,400	4,400	9,400	9,400	9,200
Basic Chemical Manufacturing	12,300	12,300	12,100				5,600	5,500	5,500
Service-Providing	1,566,000	1,587,000	1,549,700	450,400	456,200	442,700	295,300	301,200	294,800
Private Service-Providing	1,208,900	1,222,400	1,183,100	369,800	374,700	360,400	219,600	223,100	218,500
Trade, Transportation, & Utilities	364,600	373,500	359,600	103,600	105,800	102,000	64,100	65,700	64,000
Wholesale Trade	70,500	70,500	69,200	21,900	22,200	22,000	12,100	12,300	12,400
Merchant Wholesalers, Durable Goods	36,900	36,700	36,000	10,400	10,400	10,700			
Merchant Wholesalers, Nondurable Goods	24,300	24,500	24,500	7,700	7,800	7,600			
Retail Trade	216,500	223,300	215,100	57,500	58,800	56,500	40,500	41,600	40,000
Clothing & Clothing Accessories Stores, General Merchandise									
Motor Vehicle & Parts Dealers	25,300	25,600	25,300						
Building Material & Garden Equipment & Supplies Dealers	18,700	19,200	18,700						
Food & Beverage Stores	35,000	35,700	35,700						
Grocery Stores	30,400	30,900	31,100	7,900	8,300	8,500	5,600	5,700	5,600
Health & Personal Care Stores	15,300	15,800	15,400						
Gasoline Stations	18,100	18,300	17,900						
Clothing and Clothing Accessories Stores	17,900	20,200	18,300						
General Merchandise Stores	52,200	54,800	50,600	12,500	13,000	12,000	9,300	9,700	9,100
Department Stores	16,900	18,400	16,300				2,500	2,800	2,600
Transportation, Warehousing, & Utilities	77,600	79,700	75,300	24,200	24,800	23,500	11,500	11,800	11,600
Transportation and Warehousing	68,600	70,600	65,800						
Truck Transportation	15,900	16,300	15,700						
Support Activities for Transportation	19,100	19,500	18,400						
Information	28,000	28,300	24,400	8,900	9,000	6,800	5,200	5,200	4,900
Telecommunications	10,500	10,600	10,900						
Financial Activities	91,700	92,900	91,400	25,500	25,900	25,700	16,700	16,800	17,300
Finance & Insurance	61,800	62,400	61,800	18,100	18,200	18,300	11,900	12,100	12,500
Credit Intermediation & Related Activities	31,700	32,000	32,300	7,500	7,500	7,600			
Depository Credit Intermediation	22,700	22,800	23,200	5,700	5,800	5,900	4,300	4,300	4,500
Insurance Carriers & Related Activities	26,400	26,700	25,500						
Real Estate & Rental & Leasing	29,900	30,500	29,600						
Professional & Business Services	192,500	192,600	187,100	66,700	67,600	65,800	41,400	41,800	41,000
Professional, Scientific, & Technical Services	80,100	78,900	80,800	28,800	28,900	29,000	18,800	18,500	18,200
Legal Services	18,900	19,000	19,000	8,300	8,300	8,300			
Accounting, Tax Preparation, Bookkeeping & Payroll Services	11,700	10,200	12,100						
Architectural, Engineering, & Related Services	23,200	23,000	22,600						
Management of Companies & Enterprises	23,800	23,800	23,500	8,100	8,100	8,200			
Admin. & Support & Waste Mgmt. & Remediation Serv.	88,600	89,900	82,800	29,800	30,600	28,600	17,700	18,400	18,000
Administrative & Support Services	79,400	80,400	75,100	27,400	28,000	26,600			
Employment Services	27,600	29,600	25,800	10,000	10,500	9,900			
Services to Buildings & Dwellings	18,600	19,100	17,600						
Education & Health Services	272,900	274,200	267,800	75,100	76,200	74,300	48,300	49,000	47,700
Educational Services	36,000	38,100	36,800	19,200	20,600	20,200			
Colleges, Universities, & Professional Schools	19,700	20,500	20,300	10,700	11,500	11,800			
Health Care & Social Assistance	236,900	236,100	231,000	55,900	55,600	54,100	41,500	42,000	41,100
Ambulatory Health Care Services	85,500	85,200	83,700	21,100	21,100	20,600	17,500	17,600	17,000
Offices of Physicians	32,900	33,000	33,000						
Home Health Care Services	21,600	21,600	20,500						
Hospitals	66,100	65,900	64,600	18,600	18,400	17,800	11,600	11,600	11,300
Nursing & Residential Care Facilities	41,500	41,400	40,300						
Nursing Care Facilities	25,800	25,800	25,200						
Social Assistance	43,800	43,600	42,400						
Leisure & Hospitality	193,200	194,500	187,900	71,300	71,300	67,400	31,300	31,800	31,000
Arts, Entertainment, & Recreation	26,800	27,200	27,300	10,200	10,300	10,100			
Amusement, Gambling, & Recreation Industries	20,700	21,000	20,600	5,800	6,000	5,600			
Gambling Industries	10,500	10,400	10,900	2,000	2,100	2,100			
Accommodation & Food Services	166,400	167,300	160,600	61,100	61,000	57,300	26,300	26,800	26,900
Accommodation	26,800	27,100	26,000	13,200	13,200	12,400			
Food Services & Drinking Places	139,600	140,200	134,600	47,900	47,800	44,900	24,500	25,200	24,700
Other Services	66,000	66,400	64,900	18,700	18,900	18,400	12,600	12,800	12,600
Repair & Maintenance	19,300	19,600	19,100						
Automotive Repair & Maintenance	10,500	10,600	10,700						
Personal & Laundry Services	15,100	15,300	15,300						
Government	357,100	364,600	366,600	80,600	81,500	82,300	75,700	78,100	76,300
Federal Government	31,400	31,600	31,900	12,400	12,400	12,500	3,000	3,000	3,200
State Government	107,500	113,800	110,400	19,100	19,800	20,000	39,600	41,600	39,700
Local Government	218,200	219,200	224,300	49,100	49,300	49,800	33,100	33,500	33,400

LOUISIANA & MSAs NONFARM EMPLOYMENT

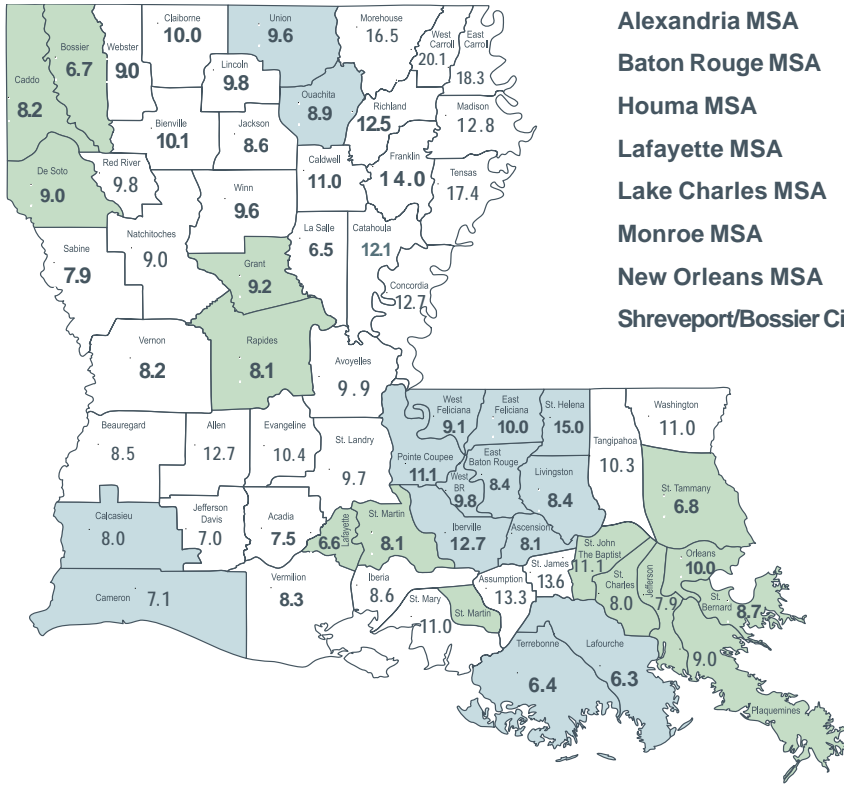
9

Not Seasonally Adjusted	SHREVEPORT-BOSSIER CITY MSA			LAFAYETTE MSA			LAKE CHARLES MSA		
	PREL	REV	REV	PREL	REV	REV	PREL	REV	REV
	JAN 2011	DEC 2010	JAN 2010	JAN 2011	DEC 2010	JAN 2010	JAN 2011	DEC 2010	JAN 2010
Total Nonfarm	177,300	177,700	173,100	146,300	148,900	143,600	88,300	89,200	88,800
Total Private	141,900	144,100	137,800	129,200	131,100	126,200	72,500	73,400	72,400
Goods-Producing	25,100	25,500	23,100	30,700	31,200	30,400	18,000	18,200	19,000
Mining & Logging	6,300	6,400	5,200	15,200	15,300	14,500	1,100	1,100	1,200
Oil & Gas Extraction									
Crude Petroleum & Natural Gas Extraction									
Support Activities for Mining				13,000	13,200	12,500			
Drilling Oil & Gas Wells									
Construction	9,000	9,200	7,700	5,900	6,300	6,800	8,000	8,000	8,900
Construction of Buildings									
Residential Building Construction									
Nonresidential Building Construction									
Heavy & Civil Engineering Construction							3,500	3,500	4,100
Utility System Construction									
Specialty Trade Contractors									
Manufacturing	9,800	9,900	10,200	9,600	9,600	9,100	8,900	9,100	8,900
Durable Goods									
Transportation Equipment Manufacturing	1,100	1,100	1,400						
Ship & Boat Building									
Nondurable Goods							6,800	6,900	6,800
Food Manufacturing									
Paper Manufacturing									
Petroleum & Coal Products Mfg. & Chemical Mfg.							6,400	6,400	6,400
Petroleum & Coal Products Manufacturing									
Chemical Manufacturing									
Basic Chemical Manufacturing									
Service-Providing	152,200	152,200	150,000	115,600	117,700	113,200	70,300	71,000	69,800
Private Service-Providing	116,800	118,600	114,700	98,500	99,900	95,800	54,500	55,200	53,400
Trade, Transportation, & Utilities	33,300	34,000	32,600	28,800	29,500	28,000	16,200	16,700	15,800
Wholesale Trade	6,600	6,600	6,300	7,600	7,600	7,300			
Merchant Wholesalers, Durable Goods									
Merchant Wholesalers, Nondurable Goods									
Retail Trade	20,500	21,200	20,300	17,400	18,000	17,000	10,000	10,300	10,000
Clothing & Clothing Accessories Stores, General Merchandise							3,300	3,500	3,400
Motor Vehicle & Parts Dealers									
Building Material & Garden Equipment & Supplies Dealers									
Food & Beverage Stores									
Grocery Stores									
Health & Personal Care Stores									
Gasoline Stations									
Clothing and Clothing Accessories Stores									
General Merchandise Stores	4,500	4,700	4,500	3,700	3,800	3,600			
Department Stores									
Transportation, Warehousing, & Utilities	6,200	6,200	6,000	3,800	3,900	3,700			
Transportation and Warehousing									
Truck Transportation									
Support Activities for Transportation									
Information	4,800	4,900	3,500	2,700	2,700	2,700			
Telecommunications									
Financial Activities	7,000	7,100	6,800	8,300	8,400	8,100			
Finance & Insurance									
Credit Intermediation & Related Activities									
Depository Credit Intermediation									
Insurance Carriers & Related Activities									
Real Estate & Rental & Leasing									
Professional & Business Services	16,300	16,600	16,400	17,100	17,300	16,700	6,800	6,800	6,700
Professional, Scientific, & Technical Services				8,100	8,100	7,600			
Legal Services									
Accounting, Tax Preparation, Bookkeeping & Payroll Services									
Architectural, Engineering, & Related Services									
Management of Companies & Enterprises									
Admin. & Support & Waste Mgmt. & Remediation Serv.	9,600	9,900	7,700						
Administrative & Support Services									
Employment Services									
Services to Buildings & Dwellings									
Education & Health Services	26,100	26,300	26,200	22,000	22,200	21,100			
Educational Services									
Colleges, Universities, & Professional Schools									
Health Care & Social Assistance	25,100	25,200	24,700	19,900	20,000	19,500			
Ambulatory Health Care Services									
Offices of Physicians									
Home Health Care Services									
Hospitals	9,700	9,700	9,600	5,300	5,300	5,400	3,500	3,500	3,400
Nursing & Residential Care Facilities									
Nursing Care Facilities									
Social Assistance									
Leisure & Hospitality	21,300	21,700	21,400	14,700	14,900	14,400	11,400	11,500	11,300
Arts, Entertainment, & Recreation	5,700	5,800	6,100						
Amusement, Gambling, & Recreation Industries	5,500	5,600	5,800						
Gambling Industries	4,400	4,400	4,900						
Accommodation & Food Services	15,600	15,900	15,300	12,900	13,100	12,700	10,000	10,200	10,000
Accommodation									
Food Services & Drinking Places	12,800	13,000	12,500	12,000	12,100	11,700			
Other Services	8,000	8,000	7,800	4,900	4,900	4,800			
Repair & Maintenance									
Automotive Repair & Maintenance									
Personal & Laundry Services									
Government	35,500	33,600	35,300	17,100	17,800	17,400	15,800	15,800	16,400
Federal Government	4,700	4,700	4,700	1,100	1,100	1,100	600	600	600
State Government	11,400	11,500	10,700	5,000	5,800	5,100	4,100	4,100	3,900
Local Government	19,400	17,400	19,900	11,000	10,900	11,200	11,100	11,100	11,900

	MONROE MSA			HOUMA-BAYOU CANE- THIBODAOX MSA			ALEXANDRIA MSA		
	PREL	REV	REV	PREL	REV	REV	PREL	REV	REV
	JAN 2011	DEC 2010	JAN 2010	JAN 2011	DEC 2010	JAN 2010	JAN 2011	DEC 2010	JAN 2010
<i>Not Seasonally Adjusted</i>									
Total Nonfarm	74,600	75,700	75,700	93,600	94,500	89,800	62,900	64,400	62,500
Total Private	60,600	61,300	60,900	79,900	80,600	75,500	48,100	49,500	47,100
Goods-Producing	10,200	10,300	10,100	19,800	20,200	19,300	8,300	8,500	8,400
Mining & Logging				5,700	5,700	5,500			
Oil & Gas Extraction									
Crude Petroleum & Natural Gas Extraction									
Support Activities for Mining				4,700	4,800	4,700			
Drilling Oil & Gas Wells									
Construction				5,900	5,800	5,000			
Construction of Buildings									
Residential Building Construction									
Nonresidential Building Construction									
Heavy & Civil Engineering Construction									
Utility System Construction									
Specialty Trade Contractors									
Manufacturing	6,700	6,800	6,600						
Durable Goods									
Transportation Equipment Manufacturing									
Ship & Boat Building									
Nondurable Goods	5,000	5,100	4,800						
Food Manufacturing									
Paper Manufacturing									
Petroleum & Coal Products Mfg. & Chemical Mfg.									
Petroleum & Coal Products Manufacturing									
Chemical Manufacturing									
Basic Chemical Manufacturing									
Service-Providing	64,400	65,400	65,600	73,800	74,300	70,500	54,600	55,900	54,100
Private Service-Providing	50,400	51,000	50,800	60,100	60,400	56,200	39,800	41,000	38,700
Trade, Transportation, & Utilities	13,600	14,000	13,800	23,500	24,300	23,500	11,400	11,800	11,200
Wholesale Trade									
Merchant Wholesalers, Durable Goods									
Merchant Wholesalers, Nondurable Goods									
Retail Trade	9,400	9,700	9,600	10,700	11,000	10,900	7,700	8,000	7,600
Clothing & Clothing Accessories Stores, General Merchandise	3,400	3,600	3,500						
Motor Vehicle & Parts Dealers									
Building Material & Garden Equipment & Supplies Dealers									
Food & Beverage Stores									
Grocery Stores									
Health & Personal Care Stores									
Gasoline Stations									
Clothing and Clothing Accessories Stores									
General Merchandise Stores									
Department Stores									
Transportation, Warehousing, & Utilities									
Transportation and Warehousing									
Truck Transportation									
Support Activities for Transportation				4,400	4,400	4,300			
Information									
Telecommunications									
Financial Activities									
Finance & Insurance									
Credit Intermediation & Related Activities									
Depository Credit Intermediation									
Insurance Carriers & Related Activities									
Real Estate & Rental & Leasing									
Professional & Business Services	7,200	7,200	7,300						
Professional, Scientific, & Technical Services									
Legal Services									
Accounting, Tax Preparation, Bookkeeping & Payroll Services									
Architectural, Engineering, & Related Services									
Management of Companies & Enterprises									
Admin. & Support & Waste Mgmt. & Remediation Serv.									
Administrative & Support Services				4,700	5,000	3,500			
Employment Services				3,100	3,400	2,000			
Services to Buildings & Dwellings									
Education & Health Services	13,100	13,300	12,800						
Educational Services									
Colleges, Universities, & Professional Schools									
Health Care & Social Assistance									
Ambulatory Health Care Services									
Offices of Physicians									
Home Health Care Services									
Hospitals	3,600	3,600	3,500				4,400	4,300	4,100
Nursing & Residential Care Facilities									
Nursing Care Facilities									
Social Assistance									
Leisure & Hospitality	6,700	6,800	6,800	7,400	7,600	7,100			
Arts, Entertainment, & Recreation									
Amusement, Gambling, & Recreation Industries									
Gambling Industries									
Accommodation & Food Services									
Accommodation									
Food Services & Drinking Places									
Other Services									
Repair & Maintenance									
Automotive Repair & Maintenance									
Personal & Laundry Services									
Government	14,000	14,400	14,800	13,700	13,900	14,300	14,800	14,900	15,400
Federal Government	600	600	600	400	400	500	3,000	2,900	3,000
State Government	4,200	4,500	4,800	2,800	3,300	3,100	4,500	4,700	4,900
Local Government	9,200	9,300	9,400	10,500	10,200	10,700	7,300	7,300	7,500

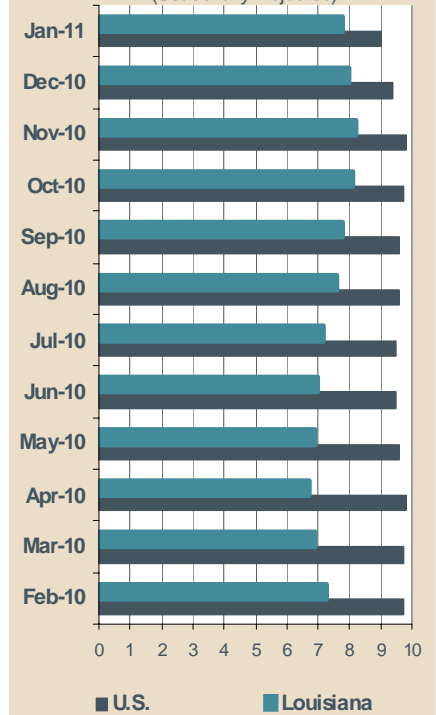
Louisiana Unemployment Rates (Not Seasonally Adjusted)

January 2011



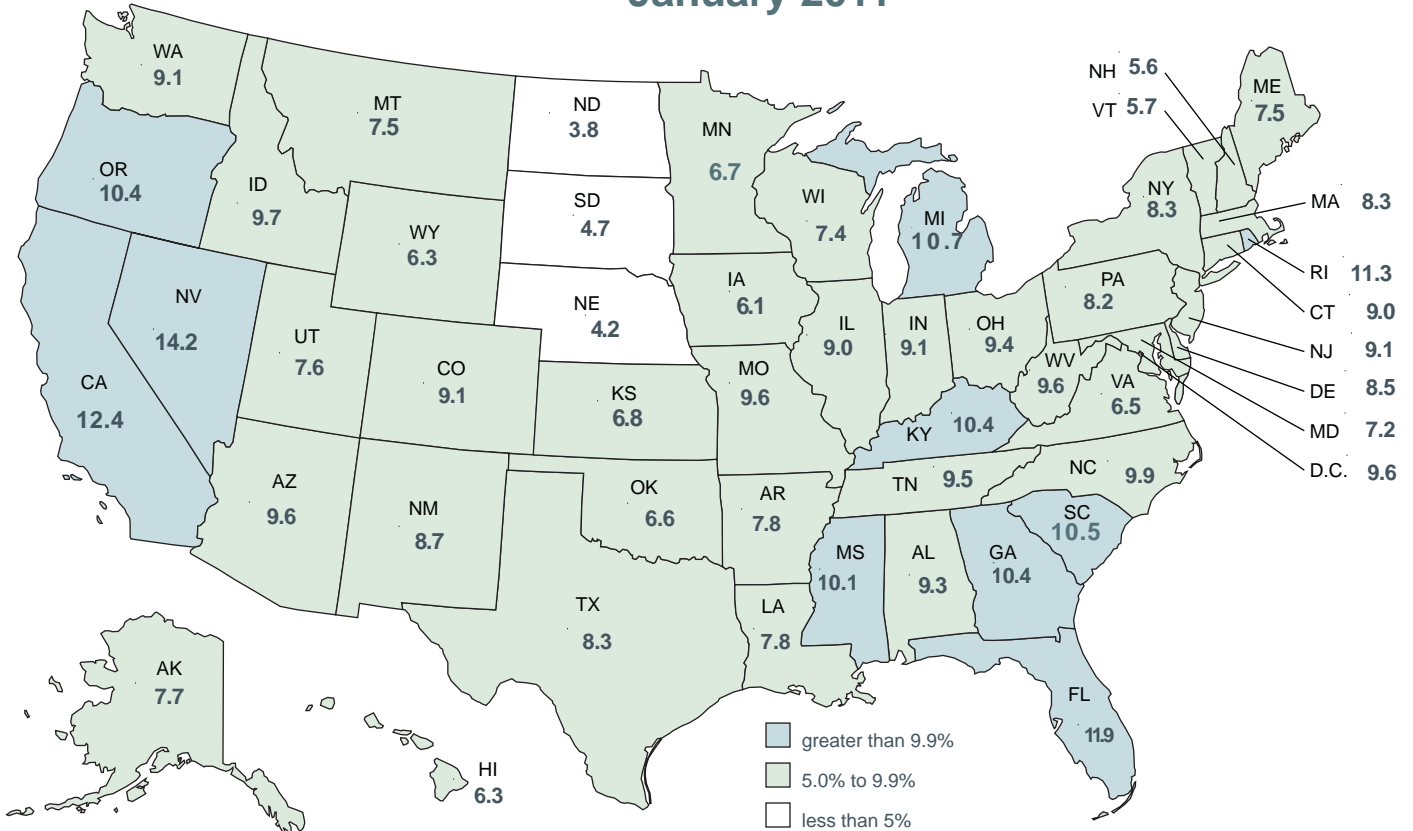
Statewide 8.6 %

United States - Louisiana Unemployment Rates (Seasonally Adjusted)



United States Unemployment Rates (Seasonally Adjusted)

January 2011



United States Rate 9.0

CIVILIAN LABOR FORCE (Not Seasonally Adjusted)

Area	Preliminary January 2011			Revised December 2010			Revised January 2010		
	Employed	Unemployed	Rate	Employed	Unemployed	Rate	Employed	Unemployed	Rate
UNITED STATES	137,599,000	14,937,000	9.8	139,159,000	13,997,000	9.1	136,809,000	16,147,000	10.6
LOUISIANA	1,882,114	177,058	8.6	1,920,856	147,920	7.2	1,876,925	160,166	7.9
ALEXANDRIA MSA	62,633	5,594	8.2	64,388	4,684	6.8	62,489	5,065	7.5
Grant	7,838	792	9.2	8,058	599	6.9	7,820	713	8.4
Rapides	54,795	4,802	8.1	56,330	4,085	6.8	54,669	4,352	7.4
BATON ROUGE MSA	340,731	32,491	8.7	349,576	27,167	7.2	344,166	28,245	7.6
Ascension	46,644	4,095	8.1	47,854	3,278	6.4	47,114	3,779	7.4
East Baton Rouge	196,801	17,959	8.4	201,909	15,161	7.0	198,785	15,577	7.3
East Feliciana	7,238	807	10.0	7,426	708	8.7	7,311	650	8.2
Iberville	10,828	1,575	12.7	11,109	1,310	10.5	10,938	1,369	11.1
Livingston	53,278	4,888	8.4	54,661	4,026	6.9	53,815	4,330	7.4
Pointe Coupee	8,524	1,065	11.1	8,745	895	9.3	8,610	762	8.1
St. Helena	3,632	639	15.0	3,726	558	13.0	3,668	538	12.8
West Baton Rouge	9,564	1,040	9.8	9,813	880	8.2	9,661	829	7.9
West Feliciana	4,223	423	9.1	4,332	352	7.5	4,265	411	8.8
HOUMA-BAYOU CANE- THIBODAUX MSA	97,221	6,569	6.3	98,543	5,176	5.0	94,256	5,990	6.0
Lafourche	45,907	3,087	6.3	46,531	2,332	4.8	44,507	2,717	5.8
Terrebonne	51,314	3,482	6.4	52,012	2,844	5.2	49,749	3,273	6.2
LAFAYETTE MSA	125,265	9,196	6.8	127,972	7,589	5.6	124,149	8,652	6.5
Lafayette	103,581	7,296	6.6	105,819	6,003	5.4	102,658	6,774	6.2
St. Martin	21,684	1,900	8.1	22,153	1,586	6.7	21,491	1,878	8.0
LAKE CHARLES MSA	86,235	7,469	8.0	87,585	6,315	6.7	87,408	6,943	7.4
Calcasieu	83,401	7,251	8.0	84,706	6,153	6.8	84,535	6,746	7.4
Cameron	2,834	218	7.1	2,879	162	5.3	2,873	197	6.4
MONROE MSA	72,916	7,180	9.0	74,297	6,078	7.6	74,460	6,596	8.1
Ouachita	64,009	6,236	8.9	65,221	5,276	7.5	65,364	5,611	7.9
Union	8,907	944	9.6	9,076	802	8.1	9,096	985	9.8
NEW ORLEANS-METairie- KENNER MSA	494,383	45,466	8.4	503,787	38,127	7.0	492,863	40,619	7.6
Jefferson	195,872	16,810	7.9	199,598	14,075	6.6	195,270	15,528	7.4
New Orleans City/O'leans	132,948	14,766	10.0	135,477	12,654	8.5	132,539	12,640	8.7
Plaquemines	7,382	727	9.0	7,523	591	7.3	7,360	600	7.5
St. Bernard	16,782	1,606	8.7	17,101	1,373	7.4	16,730	1,323	7.3
St. Charles	21,973	1,903	8.0	22,391	1,568	6.5	21,905	1,818	7.7
St. John Baptist	18,506	2,303	11.1	18,859	2,028	9.7	18,450	2,191	10.6
St. Tammany	100,920	7,351	6.8	102,839	5,839	5.4	100,609	6,519	6.1
SHREVEPORT-BOSSIER CITY MSA	168,737	14,343	7.8	171,976	11,970	6.5	168,019	13,208	7.3
Bossier	50,047	3,590	6.7	51,008	3,008	5.6	49,835	3,363	6.3
Caddo	108,343	9,732	8.2	110,423	8,119	6.8	107,882	8,835	7.6
De Soto	10,347	1,021	9.0	10,545	843	7.4	10,303	1,009	8.9
NON-MSA PARISHES									
Acadia (Crowley) ¹	23,855	1,941	7.5	24,233	1,570	6.1	23,649	1,937	7.6
Allen	7,739	1,121	12.7	7,884	832	9.5	7,889	1,093	12.2
Assumption (Pierre Part) ¹	9,032	1,386	13.3	9,271	1,109	10.7	9,051	1,135	11.1
Avoyelles	15,002	1,640	9.9	15,298	1,355	8.1	14,776	1,427	8.8
Beauregard (DeRidder) ¹	13,426	1,255	8.5	13,519	1,082	7.4	13,131	1,192	8.3
Bienville	5,888	665	10.1	5,987	555	8.5	5,550	618	10.0
Caldwell	4,072	503	11.0	4,134	407	9.0	3,950	518	11.6
Catahoula	3,798	522	12.1	3,838	431	10.1	3,729	467	11.1
Claiborne	6,010	666	10.0	6,119	551	8.3	5,833	626	9.7
Concordia (Natchez, MS-LA) ¹	6,332	920	12.7	6,544	846	11.4	6,411	938	12.8
East Carroll	2,444	546	18.3	2,481	475	16.1	2,480	438	15.0
Evangeline	11,364	1,326	10.4	11,559	1,052	8.3	11,333	1,204	9.6
Franklin	6,800	1,103	14.0	6,905	922	11.8	6,655	923	12.2
Iberia (New Iberia) ¹	29,953	2,836	8.6	30,873	2,371	7.1	29,728	2,922	8.9
Jackson (Ruston) ¹	5,950	559	8.6	6,067	469	7.2	5,887	552	8.6
Jefferson Davis (Jennings) ¹	13,471	1,020	7.0	13,631	833	5.8	13,279	969	6.8
La Salle	6,368	445	6.5	6,437	369	5.4	5,981	453	7.0
Lincoln (Ruston) ¹	17,673	1,913	9.8	18,018	1,582	8.1	17,485	1,578	8.3
Madison (Tallulah) ¹	4,029	592	12.8	4,125	488	10.6	4,025	510	11.2
Morehouse (Bastrop) ¹	9,542	1,880	16.5	9,703	1,652	14.5	9,489	1,788	15.9
Natchitoches (Natchitoches) ¹	15,448	1,535	9.0	16,037	1,313	7.6	15,027	1,527	9.2
Red River	3,343	362	9.8	3,371	322	8.7	3,179	344	9.8
Richland	8,115	1,161	12.5	8,339	980	10.5	7,760	1,008	11.5
Sabine	8,854	760	7.9	8,938	639	6.7	8,436	746	8.1
St. James	8,256	1,299	13.6	8,410	1,091	11.5	8,234	1,026	11.1
St. Landry (Opelousas, Eunice) ¹	34,610	3,698	9.7	35,119	3,011	7.9	34,626	3,421	9.0
St. Mary (Morgan City) ¹	20,289	2,515	11.0	20,881	2,094	9.1	20,610	2,241	9.8
Tangipahoa (Hammond) ¹	47,923	5,507	10.3	49,064	4,702	8.7	47,107	4,739	9.1
Tensas	1,611	340	17.4	1,655	305	15.6	1,623	326	16.7
Vermilion (Abbeville) ¹	21,850	1,971	8.3	22,358	1,555	6.5	21,932	1,982	8.3
Vernon (Fort Polk South) ¹	19,135	1,703	8.2	19,421	1,652	7.8	19,118	1,457	7.1
Washington (Bogalusa) ¹	13,865	1,712	11.0	14,059	1,432	9.2	14,046	1,619	10.3
Webster (Mindon) ¹	18,214	1,811	9.0	18,499	1,559	7.8	18,004	1,646	8.4
West Carroll	3,506	880	20.1	3,666	697	16.0	3,471	891	20.4
Winn	6,226	659	9.6	6,288	512	7.5	5,630	584	9.4

¹In addition to the eight (8) Metropolitan Statistical Areas (MSAs) in Louisiana, there are seventeen (17) Micropolitan Statistical Areas (MCs): Jackson and Lincoln Parishes combine to constitute one MC area. Civilian Labor Force can be derived by adding employed and unemployed. For related information or data, please visit: www.bls.gov/lau/home.htm.

LOUISIANA - PRIVATE EMPLOYMENT (Not Seasonally Adjusted)

	Avg. Weekly Earnings (\$)			Avg. Weekly Hours			Avg. Hourly Earnings (\$)		
	JAN	DEC	JAN	JAN	DEC	JAN	JAN	DEC	JAN
	2011	2010	2010	2011	2010	2010	2011	2010	2010
Total Private	726.72	724.46	700.77	36.5	36.7	35.9	19.91	19.74	19.52
Goods-Producing	961.56	1,004.52	975.61	41.5	42.8	41.8	23.17	23.47	23.34
Private Service-Providing	666.34	652.16	630.21	35.2	35.1	34.4	18.93	18.58	18.32
Construction	910.14	929.15	869.53	42.0	42.7	40.9	21.67	21.76	21.26
Manufacturing	926.80	968.61	1,004.76	40.0	41.2	41.9	23.17	23.51	23.98
Trade, Transportation, and Utilities	666.37	663.00	613.47	37.0	37.5	36.3	18.01	17.68	16.90
Financial Activities	675.27	645.34	699.71	36.9	35.4	36.5	18.30	18.23	19.17
Professional and Business Services	978.43	997.14	900.68	40.7	40.9	38.1	24.04	24.38	23.64
Education and Health Services	578.49	563.97	559.09	33.4	33.0	32.6	17.32	17.09	17.15
Leisure and Hospitality	333.17	325.95	323.99	26.4	26.5	26.6	12.62	12.30	12.18

METROPOLITAN STATISTICAL AREA (MSA) PRIVATE EMPLOYMENT (Not Seasonally Adjusted)

	Avg. Weekly Earnings (\$)			Avg. Weekly Hours			Avg. Hourly Earnings (\$)		
	JAN	DEC	JAN	JAN	DEC	JAN	JAN	DEC	JAN
	2011	2010	2010	2011	2010	2010	2011	2010	2010
Alexandria	675.64	643.96	503.15	36.6	36.3	34.7	18.46	17.74	14.50
Baton Rouge	761.21	759.48	741.24	36.3	36.2	34.8	20.97	20.98	21.30
Houma	827.20	833.40	816.00	40.0	40.3	40.0	20.68	20.68	20.40
Lafayette	747.25	752.22	638.31	37.4	37.8	35.6	19.98	19.90	17.93
Lake Charles	806.26	784.30	733.84	39.6	40.2	37.1	20.36	19.51	19.78
Monroe	561.49	585.87	502.27	34.3	35.4	33.8	16.37	16.55	14.86
New Orleans	828.80	831.68	842.50	37.0	36.8	38.4	22.40	22.60	21.94
Shreveport	649.74	636.48	637.52	34.0	34.0	35.3	19.11	18.72	18.06

AVERAGE HOURS AND EARNINGS FOR PRODUCTION WORKERS IN MANUFACTURING AND SELECTED NONMANUFACTURING INDUSTRIES (Not Seasonally Adjusted)

	Avg. Weekly Earnings (\$)			Avg. Weekly Hours			Avg. Hourly Earnings (\$)		
	JAN	DEC	JAN	JAN	DEC	JAN	JAN	DEC	JAN
	2011	2010	2010	2011	2010	2010	2011	2010	2010
Louisiana									
Mining & Logging	939.47	1,004.72	954.33	40.2	42.9	43.3	23.37	23.42	22.04
Manufacturing	876.66	880.74	919.77	41.1	42.0	43.0	21.33	20.97	21.39
Durable Goods	900.15	896.18	820.86	42.5	42.9	40.9	21.18	20.89	20.07
Nondurable Goods	849.65	860.95	1,028.76	39.5	40.9	45.3	21.51	21.05	22.71
New Orleans MSA									
Ship and Boat Building	824.35	874.82	790.01	37.2	39.3	37.3	22.16	22.26	21.18

The 97,300 production workers in all manufacturing earned an average of \$876.66 per week in January 2011. Average weekly hours were 41.1, and average hourly earnings were \$21.33.

LOUISIANA UNEMPLOYMENT INSURANCE by CLAIMANT'S PARISH of RESIDENCE

WEEK ENDING - January 15, 2011

RLMA/PARISH	INITIAL CLAIMS	WEEKS CLAIMED	RLMA/PARISH	INITIAL CLAIMS	WEEKS CLAIMED	RLMA/PARISH	INITIAL CLAIMS	WEEKS CLAIMED
RLMA 1	1,130	12,461	RLMA 4	685	6,090	RLMA 7	536	5,578
JEFFERSON	442	4,780	ACADIA	45	398	BIENVILLE	17	175
ORLEANS	315	4,262	EVANGELINE	40	336	BOSSIER	89	767
PLAQUEMINES	19	201	IBERIA	85	719	CADDO	250	2,610
ST. BERNARD	1	14	LAFAYETTE	159	1,840	CLAIBORNE	9	126
ST. CHARLES	48	440	ST. LANDRY	138	1,045	DESOTO	23	225
ST. JAMES	51	434	ST. MARTIN	49	450	LINCOLN	60	496
ST. JOHN	88	765	ST. MARY	98	824	NATCHITOCHE	31	402
ST. TAMMANY	166	1,565	VERMILION	71	478	RED RIVER	10	90
						SABINE	16	141
						WEBSTER	31	546
RLMA 2	1,000	10,872	RLMA 5	265	2,779	RLMA 8	419	3,997
ASCENSION	112	1,118	ALLEN	31	291	CALDWELL	13	108
E. BATON ROUGE	411	4,895	BEAUREGARD	29	374	EAST CARROLL	13	161
EAST FELICIANA	20	229	CALCASIEU	178	1,880	FRANKLIN	48	328
IBERVILLE	47	475	CAMERON	0	26	JACKSON	18	147
LIVINGSTON	136	1,271	JEFF. DAVIS	27	208	MADISON	12	153
POINTE COUPEE	41	294				MOREHOUSE	54	566
ST. HELENA	11	92	RLMA 6	316	3,003	OUACHITA	162	1,653
TANGIPAHOA	153	1,695	AVOYELLES	39	461	RICHLAND	39	376
WASHINGTON	29	415	CATAHOULA	23	135	TENSAS	6	92
W. BATON ROUGE	36	313	CONCORDIA	23	177	UNION	26	228
WEST FELICIANA	4	75	GRANT	15	179	WEST CARROLL	28	185
			LASALLE	9	86			
RLMA 3	253	2,018	RAPIDES	150	1,186			
ASSUMPTION	41	454	VERNON	39	634			
LAFOURCHE	108	692	WINN	18	145			
TERREBONNE	104	872						

RLMA = REGIONAL LABOR MARKET AREA

THE ABOVE FIGURES INCLUDE REGULAR UNEMPLOYMENT INSURANCE (UI), UNEMPLOYMENT CLAIMS for FEDERAL EMPLOYEES (UCFE), and UNEMPLOYMENT CLAIMS for EX-SERVICE MEMBERS (UCX) DATA ONLY.

Labor Market Questions and Answers!

- **What annual benchmarking updates can be found on the Louisiana Workforce Commission (LWC) Web site**

<http://www.laworks.net?>

The two data series with updated benchmark data are the Current Employment Statistics (CES) or nonfarm data with new benchmarked figures for 2009 and 2010, and the Civilian Labor Force data with benchmarked updates for 2010.

Web Navigation: LWC home page / Labor Market Information / LOIS (Louisiana Occupational Information System) / use left-side menu under Historic Data Analysis and scroll over Employment and Wage Data – Industry Data – then select Current Employment Statistics (CES) for nonfarm data or select Labor Force Data – Labor Force Employment and Unemployment (LAUS) for the Civilian Labor Force benchmarked data.

- **What new labor market products were added to the LWC Web site since the last monthly bulletin release?**

Second Quarter 2010 Employment and Wages data have been added to the LWC Web site.

Web Navigation: LWC home page / Labor Market Information / Employment and Wages – Quarterly

http://www.laworks.net/LaborMarketInfo/LMI_WageData2002toPresent.asp?year=2010&qtr=2

- **Is the 2011 Schedule of Unemployment Rate Press Releases located on the LWC Web?**

Yes, the 2011 Unemployment Rate Press Release schedule is in the following Web location and it is also included in this monthly bulletin on page 17. Web Navigation: LWC home page / Labor Market Information / LMI Downloads / Schedule of LMI Release Dates / Unemployment Rate Press Release Schedule for 2011 NEW

http://www.laworks.net/Downloads/LMI/LMI_Schedule_2011.pdf

Glossary & Technical Notes

Average Hourly Earnings/Average Weekly Earnings/ Average Weekly Hours (CES/BLS) - average total money earnings, in the survey week (i.e., the week that includes the twelfth of the month), of production workers plus nonsupervisory workers not in production, including overtime, paid vacation and sick leave.

Civilian Labor Force - that portion of the population, age sixteen or older, which is employed or unemployed and actively seeking employment during the reference week of the twelfth of the month.

Employed - the members of the labor force who worked for pay or profit, or had a job from which they were temporarily absent because of illness, vacation, labor dispute, or other reasons not reflecting a shortage of work, or who worked fifteen hours or more as unpaid workers in an enterprise operated by a member of the family.

Unemployed - the members of the labor force who did not work but were seeking work or were awaiting recall from layoffs or the beginning of a new job within thirty days.

Unemployment Rate - the number of unemployed persons expressed as a percentage of the labor force.

Continued Claim - each week claimed subsequent to the filing of the initial claim for a week of unemployment compensation.

Current Employment Statistics (CES) - estimates of nonfarm employment and production workers hours and earnings by industry. They are produced as part of a nationwide program, in cooperation with the Bureau of Labor Statistics (BLS), for the state and each metropolitan statistical area (MSA) from a sample of employing establishments.

Current Population Survey (CPS) - a monthly household survey of the U.S. population conducted for the Bureau of Labor Statistics (BLS) by the Bureau of Census, of 56,000 selected households. Respondents are interviewed to obtain information on the employment status of each household member age 16 and over, during the reference week of the twelfth.

Durable Goods - items with a normal life expectancy of three years or more. Automobiles, furniture, household appliances, and mobile homes are examples.

Initial Claims - a new claim, filed to open a claim for unemployment compensation.

Metropolitan Statistical Area (MSA) - a geographical area comprised of a parish generally containing a central city (or twin cities) of 50,000 inhabitants or more and contiguous parishes that are socially and economically integrated with the central city.

Micropolitan Statistical Area (MC) - a geographical area comprised of a parish containing a central city of at least 10,000 but less than 50,000 inhabitants and contiguous parishes that are socially and economically integrated with the central city.

NAICS (North American Industry Classification System) - an industry classification system that groups establishments into industries based on the activities in which they are primarily engaged.

Nonfarm Employment - employment by place of work that does not include the self employed, unpaid family workers, domestics, or agriculture workers. All estimates of nonfarm employment in this publication are in cooperation with the U.S. Department of Labor Bureau of Labor Statistics and include all full-time and part-time workers who were employed during the pay period including the twelfth of the month.

Nondurable Goods - items that generally last for only a short period of time (less than three years). Food, beverages, apparel, and gasoline are common examples.

Seasonally Adjusted - monthly data that is adjusted to minimize the changes in any time series which result from normal annual occurrences such as Christmas, summer vacations, and weather patterns.

Subsector - refers to the three-digit NAICS code, which will fall under the particular sector. Example: If Manufacturing (31-33) is the industry sector, then Food manufacturing (311), Paper manufacturing (322), Chemical manufacturing (325), Transportation equipment manufacturing (336), are some of the subsectors of manufacturing.

Supersector - refers to these five categories: Total Nonfarm, Total Private, Goods-Producing, Service-Providing, and Private Service-Providing.

Summary Industry Sector - a combination of industry sectors. A summary sector may or may not be published. The summary industry sectors are Mining & Logging; Construction; Manufacturing; Trade, Transportation, & Utilities; Information; Financial Activities; Professional & Business Services; Education & Health Services; Leisure & Hospitality; Other Services; and Government.

Industry Sector - 20 industry sectors based on two-digit NAICS code. They are Agriculture, Forestry, Fishing and Hunting (11), Mining (21), Utilities (22), Construction (23), Manufacturing (31-33), Wholesale Trade (42), Retail Trade (44-45), Transportation and Warehousing (48-49), Information (51), Finance and Insurance (52), Real Estate and Rental and Leasing (53), Professional and Technical Services (54), Management of Companies and Enterprises (55), Administrative and Waste Services (56), Educational Services (61), Health Care and Social Assistance (62), Arts, Entertainment, and Recreation (71), Accommodation and Food Services (72), Other Services (81), and Public Administration (92).

Constraints of the monthly civilian labor force and nonfarm employment estimates:

The civilian labor force estimates are derived by a monthly survey of approximately 750 households throughout Louisiana following the Bureau of Labor Statistics (BLS) methodology. The US Census Bureau conducts the survey by calling randomly selected households and providing BLS with survey results. Households are asked for the number of residents who are sixteen and over and whether they were working or actively looking for work during the week of the twelfth of the month. Responses to these questions become part of the formula to determine the number of people employed and the number of individuals unemployed for the state, MSAs, and each parish every month.

The nonfarm employment estimates are derived from responses received from the monthly BLS survey of 2,757 businesses across the state surveyed directly by this agency, and an additional 2,500 businesses that respond directly to BLS with their employment data. Responses capture employment activity during the twelfth of each month. This survey relies on responses from these businesses to produce industry employment levels for the state and all metropolitan statistical areas.

Both data sets are comparable with estimates for the U.S., all 50 states, and 270 metropolitan areas across the U.S.

LABOR MARKET INFORMATION WEB LINKS

Civilian Labor Force - LAUS (Local Area Unemployment Statistics) –

Employment, Unemployment and Unemployment Insurance Rate

LA <http://www.voshost.com/altentry.asp?action=lmiguest>

Left menu: Historical Data Analysis – Employment and Wage Data – Labor Force Data – Labor Force Employment and Unemployment (LAUS)

States <http://data.bls.gov/cgi-bin/dsrv?la>

US <http://data.bls.gov/pdq/querytool.jsp?survey=ln>

Consumer Price Index (US) <http://data.bls.gov/cgi-bin/surveymost?cu>

Download Louisiana Workforce Commission’s Labor Market Information Products

LA http://www.laworks.net/Downloads/Downloads_LMI.asp

Employment and Wage Data – Quarterly Census of Employment and Wages (QCEW)

LA <http://www.voshost.com/altentry.asp?action=lmiguest>

Left menu: Historical Data Analysis – Employment and Wage Data – Industry Data – Quarterly Census of Employment and Wages (QCEW)

States & US <http://data.bls.gov/cgi-bin/dsrv?en>

NAICS (North American Industry Classification System) Codes Look-Up Table

<http://www.census.gov/eos/www/naics>

Nonfarm Employment, Hours and Earnings - CES (Current Employment Statistics)

LA <http://www.voshost.com/altentry.asp?action=lmiguest>

Left menu: Historical Data Analysis – Employment and Wage Data – Industry Data – Current Employment Statistics (CES) – select Show Earnings Data under table

States <http://data.bls.gov/cgi-bin/dsrv?sm>

US <http://data.bls.gov/cgi-bin/dsrv?ce>

Unemployment Insurance Claimants Data (by Occupation) - Unemployment Insurance (UI)

LA <http://www.voshost.com/altentry.asp?action=lmiguest>

Left menu: Historical Data Analysis – Employment and Wage Data – Labor Force Data – Unemployment Insurance Claimants

Unemployment Insurance Claims Data (by Region, Parish, Industry) - UI

LA http://www.laworks.net/LaborMarketInfo/LMI_UIClaimsReportMenu.asp

States & US <http://ows.doleta.gov/unemploy/claims.asp>

Unemployment Rates for all States - LAUS

States <http://www.bls.gov/web/laumstrk.htm>



1001 North 23rd Street
Post Office Box 94094
Baton Rouge, LA 70804-9094

(o) 225-342-3001
(F) 225-342-3778
www.laworks.net

Bobby Jindal, Governor
Curt Eysink, Executive Director

Office of Occupational Information Services

Date: January 5, 2011
Release: Immediately

Media Should Contact:
Public Relations (225) 342-3035

N E W S R E L E A S E

2011 Schedule of Unemployment Rate Press Releases

BATON ROUGE - The Louisiana Workforce Commission (LWC) has released its 2011 unemployment rate press release schedule. Louisiana's state unemployment rate and nonfarm industry employment press release will coincide with the Bureau of Labor Statistics' monthly release of statewide data for the nation and will include seasonally adjusted data for the state. The Metropolitan Statistical Area (MSA) unemployment rate press release will include not seasonally adjusted data for the state, all 64 parishes, and eight MSAs. For some months, the seasonally and not seasonally adjusted data will be combined into one release.

Listed release dates are target dates and are subject to change.

- | | |
|---------------------------|-------------------------------------------------------------|
| January 25, 2011 | – State and MSA Unemployment Rates for December 2010 |
| March 10, 2011 | – State and MSA Unemployment Rates for January 2011 |
| March 25, 2011 | – State and MSA Unemployment Rates for February 2011 |
| April 19, 2011 | – State and MSA Unemployment Rates for March 2011 |
| May 20, 2011 | – State Unemployment Rates for April 2011 |
| May 25, 2011 | – MSA Unemployment Rates for April 2011 |
| June 17, 2011 | – State Unemployment Rates for May 2011 |
| June 22, 2011 | – MSA Unemployment Rates for May 2011 |
| July 22, 2011 | – State Unemployment Rates for June 2011 |
| July 27, 2011 | – MSA Unemployment Rates for June 2011 |
| August 19, 2011 | – State Unemployment Rates for July 2011 |
| August 24, 2011 | – MSA Unemployment Rates for July 2011 |
| September 16, 2011 | – State Unemployment Rates for August 2011 |
| September 21, 2011 | – MSA Unemployment Rates for August 2011 |
| October 21, 2011 | – State Unemployment Rates for September 2011 |
| October 26, 2011 | – MSA Unemployment Rates for September 2011 |
| November 22, 2011 | – State and MSA Unemployment Rates for October 2011 |
| December 20, 2011 | – State and MSA Unemployment Rates for November 2011 |
| January 24, 2012 | – State and MSA Unemployment Rates for December 2011 |

For more detailed statistics on Louisiana's labor market information, visit our Web site at www.laworks.net and select Labor Market Information.



Office of Occupational Information Services
Research & Statistics Division
Post Office Box 94094
Baton Rouge, LA 70804-9094

Data for: 1/2011



Workforce At A Glance is published monthly by the Louisiana Workforce Commission (LWC). The material in this publication is not copyrighted and may be reproduced; however, the LWC would appreciate credit for the material used and a copy of the reprint.

LMI Staff:

Patty Granier, Manager
Ramona Robichaux, Supervisor
Richard Pierce, Layout and Design
Benjamin Caldwell, Karen Clark, Jonathan Helis,
Tequila Perkins and Ronald Smith

Contributors:

Florence Gibson-Williams, Eula Sanders,
Natalie Foster-Lawrence, Mark Jones, Helen Hillard,
Tara Robinson, William F. Johnson, and Karen Clark

Contact Us:

Phone (225) 342-3141; Fax (225) 219-7759
Toll Free (888) 302-7662;
Email OOIS@ldol.state.la.us

Bobby Jindal, Governor
State of Louisiana

Curt Eysink, Executive Director
Louisiana Workforce Commission

Raj Jindal,
Information Technology Director

Visit our Web site:
www.laworks.net