

Louisiana Workforce

at a glance

www.laworks.net

Updated May 25, 2011 for Shreveport MSA on Page 9

Release Date: March 25, 2011

Data For: February 2011

In This Issue

2 Economic Comparison

3 NSA State & Area Employment

4 – 7 Data Trends (Graphs)

8 – 10 Nonfarm Employment

11 – 12 Unemployment Rates & Civilian Labor Force

13 Average Hours & Earnings

14 UI Claimants & Labor Market Q & A

15 – 16 Glossary, Data Constraints, Downloads & Web Links

Statewide Overview

Seasonally adjusted nonfarm employment for Louisiana was estimated at 1,891,300 in February 2011. This represents a gain of 4,200 jobs from the previous month, and a 17,300-job increase from February 2010. The construction and education and health services sectors both posted gains of 3,000 over the month, the largest monthly changes in February. The government sector recorded the largest over-the-year change, losing 7,800 jobs from last February.

Over the month, four of the 11 industry sectors had increases in employment, six showed declines, and one sector showed no change. After the aforementioned increases, leisure and hospitality followed with an increase of 2,200 jobs from January. Mining and logging recorded a gain of 300 jobs. The largest over-the-month decline was seen in professional and business services, which lost 2,100 jobs. The trade, transportation, and utilities sector and government sector lost 800 jobs from January. Losses of 200 jobs were seen in the manufacturing, financial activities, and other services sectors. The information sector showed no change.

Over the year, all sectors except government and manufacturing posted over-the-year increases. The largest gain from last February was seen in education and health services, which added 6,600 jobs. The leisure and hospitality sector grew by 6,000 jobs. The trade, transportation, and utilities sector and the information sector both added 3,600 jobs. Professional and business services saw a gain of 1,800 from last year. Both the mining and logging and construction sectors posted increases of 1,500. Financial activities saw 400 more jobs, while other services increased by 100. The manufacturing sector saw no change over the year.

The February 2011 preliminary seasonally adjusted unemployment rate for Louisiana was 7.9 percent, an increase from the January revised rate of 7.8 percent. The national unemployment rate for February was 8.9 percent, a decrease from the January rate of 9.0 percent. Total unemployment in the state for February was 164,961. The state civilian labor force decreased to 2,082,903 with a decrease in total employment to 1,917,942.

Economic Indicators

Seasonally Adjusted	PRELIMINARY FEBRUARY 2011	
	United States	Louisiana
Civilian Labor Force		
Labor Force	153,246,000	2,082,903
Employed	139,573,000	1,917,942
Unemployed	13,673,000	164,961
Unemployment Rate	8.9	7.9
Nonfarm Wage and Salary Employment	FEB 2011	FEB 2011
	United States	Louisiana
Total Nonfarm	130,515,000	1,891,300
Mining and Logging	742,000	52,400
Construction	5,509,000	123,600
Manufacturing	11,651,000	137,600
Trade, Transportation, and Utilities	24,767,000	366,500
Information	2,685,000	28,200
Financial Activities	7,608,000	92,600
Professional and Business Services	16,984,000	191,200
Education and Health Services	19,824,000	275,200
Leisure and Hospitality	13,092,000	198,400
Other Services	5,436,000	65,600
Government	22,217,000	360,000
All Employees Average Hours & Earnings		
(Not Seasonally Adjusted)		
Construction	FEB 2011	FEB 2011
	United States	Louisiana
Average Weekly Earnings	\$ 939.47	\$ 899.13
Average Weekly Hours	36.9	41.0
Average Hourly Wages	\$ 25.46	\$ 21.93
Manufacturing		
Average Weekly Earnings	\$ 944.80	\$ 995.92
Average Weekly Hours	40.0	40.9
Average Hourly Wages	\$ 23.62	\$ 24.35
Louisiana Unemployment Insurance Activities		
Claims	FEB 2011	
Initial New & Renewals	11,889	
Continued Weekly Intrastate Only	167,447	
Insured Unemployment Rate	2.8	
Benefits		
Number of First Payment	7,931	
Benefits Paid (000's)	\$ 29,547	
Weeks Compensated	152,130	
Average Wkly. Benefit Amount	\$ 195.88	
Average Duration of Claim (weeks)	19.2	
Exhaustions	4,092	
United States Consumer Price Index		
	FEB 2011	
All Urban Consumers	221.3	



The civilian labor force and nonfarm **estimates** are prepared according to Bureau of Labor Statistics (BLS) methodology and are comparable with the U.S. and other states' data. For more information, go to page 15.

Economic Comparison

Seasonally Adjusted	PRELIMINARY FEBRUARY 2011		REVISED JANUARY 2011		REVISED FEBRUARY 2010	
Civilian Labor Force	United States	Louisiana	United States	Louisiana	United States	Louisiana
Labor Force	153,246,000	2,082,903	153,186,000	2,088,336	153,558,000	2,070,462
Employed	139,573,000	1,917,942	139,323,000	1,926,449	138,698,000	1,922,680
Unemployed	13,673,000	164,961	13,863,000	161,887	14,860,000	147,782
Unemployment Rate	8.9	7.9	9.0	7.8	9.7	7.1
Nonfarm Wage and Salary Employment	FEB 2011 United States	FEB 2011 Louisiana	JAN 2011 United States	JAN 2011 Louisiana	FEB 2010 United States	FEB 2010 Louisiana
Total Nonfarm	130,515,000	1,891,300	130,323,000	1,887,100	129,246,000	1,874,000
Mining and Logging	742,000	52,400	738,000	52,100	672,000	50,900
Construction	5,509,000	123,600	5,476,000	120,600	5,533,000	122,100
Manufacturing	11,651,000	137,600	11,618,000	137,800	11,462,000	137,600
Trade, Transportation, and Utilities	24,767,000	366,500	24,740,000	367,300	24,525,000	362,900
Information	2,685,000	28,200	2,685,000	28,200	2,731,000	24,600
Financial Activities	7,608,000	92,600	7,605,000	92,800	7,657,000	92,200
Professional and Business Services	16,984,000	191,200	16,937,000	193,300	16,544,000	189,400
Education and Health Services	19,824,000	275,200	19,784,000	272,200	19,399,000	268,600
Leisure and Hospitality	13,092,000	198,400	13,071,000	196,200	12,932,000	192,400
Other Services	5,436,000	65,600	5,422,000	65,800	5,317,000	65,500
Government	22,217,000	360,000	22,247,000	360,800	22,474,000	367,800
All Employees Average Hours & Earnings						
Construction	United States (Not Seasonally Adjusted)			Louisiana (Not Seasonally Adjusted)		
	FEB 2011	JAN 2011	FEB 2010	FEB 2011	JAN 2011	FEB 2010
Average Weekly Earnings	\$ 939.47	\$ 933.31	\$ 903.57	\$ 899.13	\$ 909.72	\$ 869.41
Average Weekly Hours	36.9	36.5	35.7	41.0	42.0	40.4
Average Hourly Wages	\$ 25.46	\$ 25.57	\$ 25.31	\$ 21.93	\$ 21.66	\$ 21.52
Manufacturing						
Average Weekly Earnings	\$ 944.80	\$ 954.78	\$ 914.93	\$ 995.92	\$ 983.28	\$ 951.62
Average Weekly Hours	40.0	40.1	39.2	40.9	40.8	39.9
Average Hourly Wages	\$ 23.62	\$ 23.81	\$ 23.34	\$ 24.35	\$ 24.10	\$ 23.85
Louisiana Unemployment Insurance Activities						
Claims	FEB 2011	JAN 2011	FEB 2010	% Change From		
Initial New & Renewals	11,889	18,849	14,568	JAN 2011	FEB 2010	
Continued Weekly Intrastate Only	167,447	222,052	219,489	-36.9	-18.4	
Insured Unemployment Rate*	2.8	2.8	3.5	-24.6	-23.7	
Benefits				0.7	-20.1	
Number of First Payment	7,931	11,831	8,755	-33.0	-9.4	
Benefits Paid (000's)	\$ 29,547	\$ 37,425	\$ 45,669	-21.1	-35.3	
Weeks Compensated	152,130	192,846	203,455	-21.1	-25.2	
Average Wkly. Benefit Amount	\$ 195.88	\$ 195.78	\$ 226.90	0.1	-13.7	
Average Duration of Claim (w eeks)	19.2	16.3	23.2	17.7	-17.4	
Exhaustions	4,092	5,614	5,398	-27.1	-24.2	
* Insured unemployment rate is for the week including the 12th of the month.						
United States Consumer Price Index						
	FEB 2011	% Change From:		JAN 2011	% Change From:	
	Index	Prior Month	Prior Year	Index	Prior Month	Prior Year
All Urban Consumers	221.3	0.5	2.1	220.2	0.5	1.6

Not Seasonally Adjusted State and Area Employment

Not seasonally adjusted nonfarm employment for Louisiana was estimated at 1,885,900 for February 2011. Over the month, employment gained 12,500 jobs from January, while over the year employment gained 21,200 jobs. Goods-producing employment rose by 2,400 jobs over the month, while the service-providing employment added 10,100 jobs when compared to January. Over the year, goods-producing industries gained 3,800 jobs while the service-providing sector gained 17,400.

Total nonfarm employment in February for the Alexandria MSA was 63,600, an increase of 700 jobs from January, and a gain of 1,000 from a year ago. The goods-producing sector rose by 100 over the month and 200 jobs over the year. Service-providing employment gained 600 jobs from January and 800 jobs from February 2010.

Total nonfarm employment for the Baton Rouge MSA was estimated at 362,200 for February 2011. Over the month, the MSA showed an increase of 3,300 jobs, while over the year, nonfarm employment increased by 400. Goods-producing employment showed a gain of 600 from last month and a loss of 600 from last year. The service-providing sector increased by 2,700 jobs over the month, while gaining 1,000 jobs over the year.

The Houma MSA nonfarm employment was estimated at 94,100 for February 2011. This shows an over-the-month increase of 500 and an over-the-year gain of 3,600. The goods-producing sector showed a gain of 100 over the month, while the service-providing sector added 400 jobs from January. Over the year, the goods-producing sector gained 500 positions, while the service-providing sector added 3,100.

Total nonfarm employment for the Lafayette MSA was estimated at 147,400 for February 2011. This represents a gain from January of 1,200 jobs and an increase of 2,400 jobs from last year. Over the month, goods-producing employment rose by 200, while the service-providing sector increased by 1,000. Over the year, goods-producing employment increased by 300 jobs, while the service-providing sector increased by 2,100 jobs.

Total nonfarm employment for the Lake Charles MSA was 88,800 for February 2011. This represents a gain of 500 jobs from January but a decline of 700 jobs over the year. Over the month, the goods-producing sector added 200 jobs, while service-providing employment gained 300. The goods-producing sector lost 1,000 jobs from last February, while the service-providing sector increased by 300 jobs over the year.

Total nonfarm employment for the Monroe MSA was estimated at 75,300 for February 2011. This represents a gain of 700 jobs over the month, but a loss of 500 jobs over the year. The goods-producing sector showed no change over the month, but gained 200 jobs over the year. The service-providing sector added 700 jobs from January, but lost 700 jobs over the year.

Total nonfarm employment for the New Orleans MSA was 521,100 for February 2011. Over the month the MSA added 2,600 jobs, while over the year saw an increase of 6,500 positions. Goods-producing employment showed no change from last month, but declined by 1,500 positions from last year. The service-providing sector rose by 2,600 from January and added 8,000 jobs from February 2010.

Total nonfarm employment for the Shreveport MSA was 175,700 for February 2011, an increase of 600 jobs from last month and a gain of 3,100 from February 2010. Goods-producing employment showed an increase of 100 from January, and a gain of 2,700 from February 2010. Service-providing employment added 500 jobs over the month and 400 jobs compared to last year.

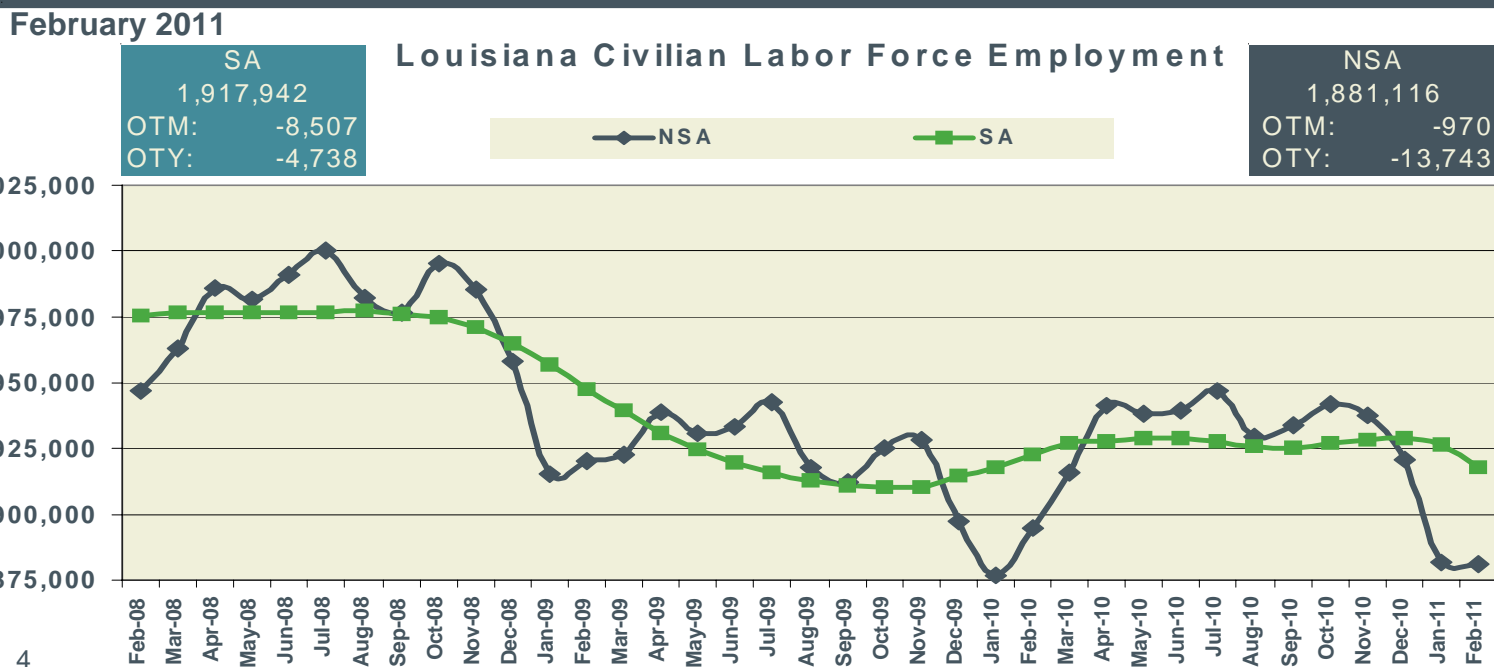
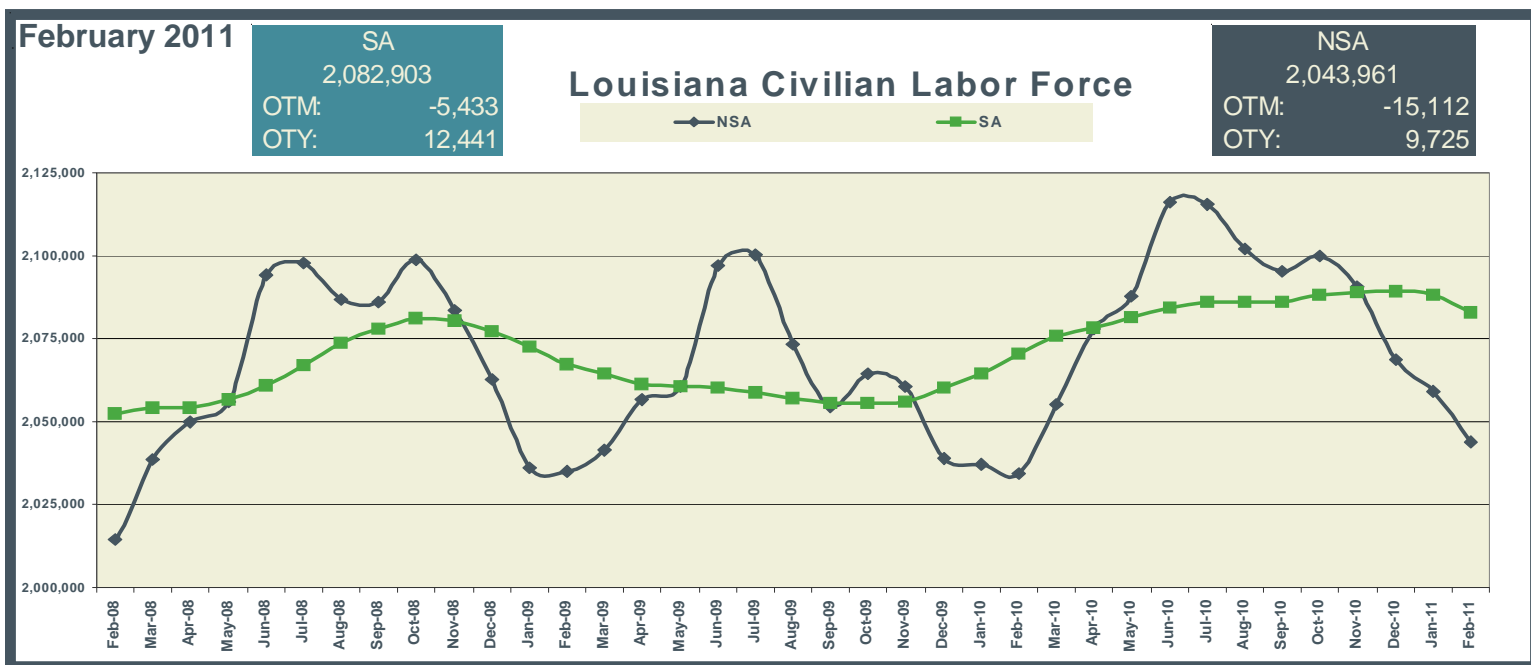
Keys to Graphs

The following graphs have been designed to reflect the over-the-year trends in the statistical data. Below are the most frequently used abbreviations.

- OTM over-the-month change in employment
- OTY over-the-year change in employment
- SA seasonally adjusted estimates
- NSA not seasonally adjusted estimates

Graphs for statewide reflect seasonally adjusted (SA) estimates compared to not seasonally adjusted (NSA) data.

Metropolitan Statistical Areas (MSAs) graphs denote nonfarm employment levels compared to a three year red trend line of the estimated employment. The navy lines in the graphs are the over-the-month changes for each year.

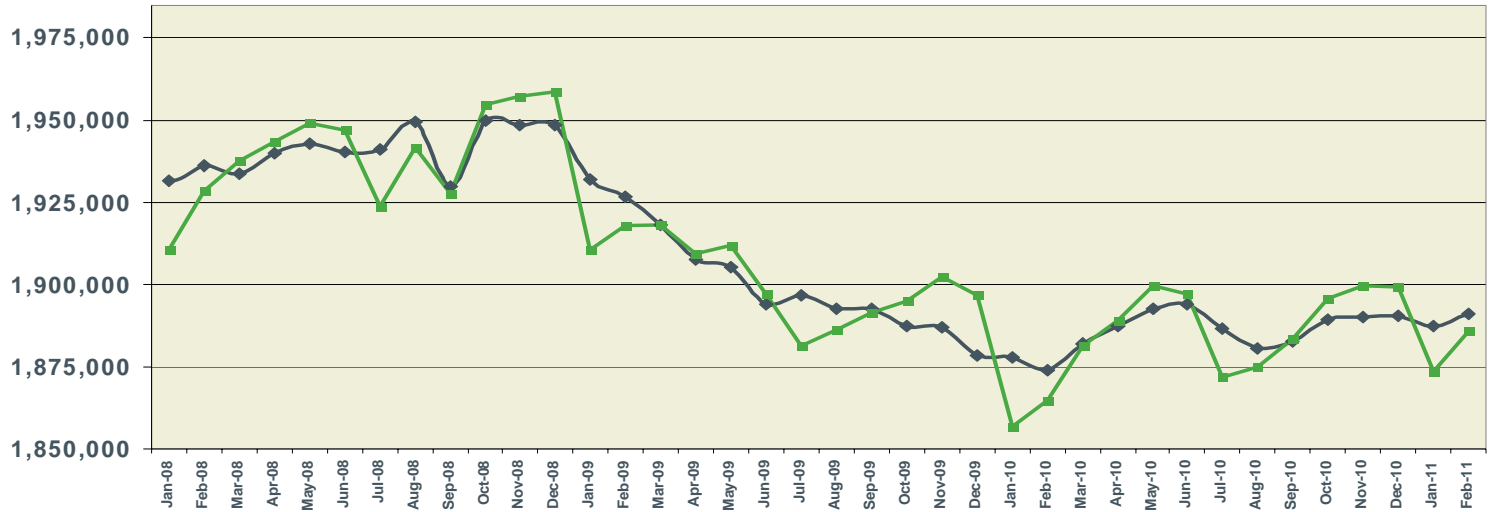


February 2011

SA
1,891,300
OTM: 4,200
OTY: 17,300

Louisiana Nonfarm Employment

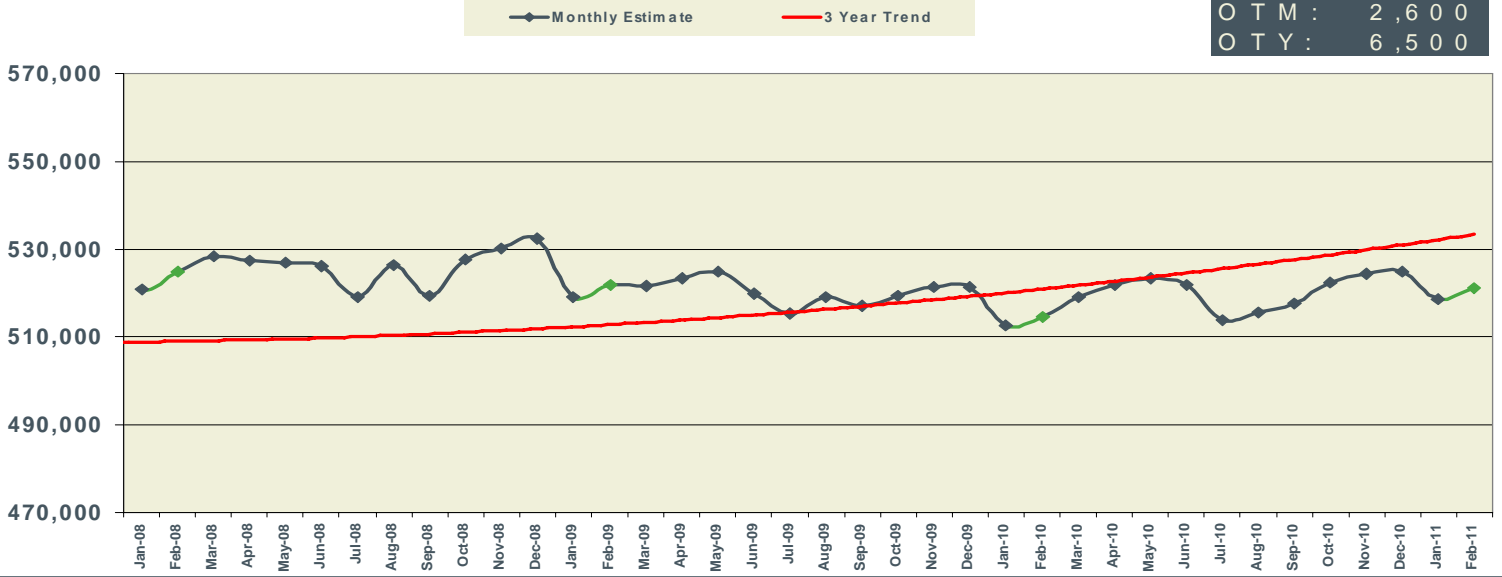
NSA
1,885,900
OTM: 12,500
OTY: 21,200



February 2011

New Orleans MSA Nonfarm Employment

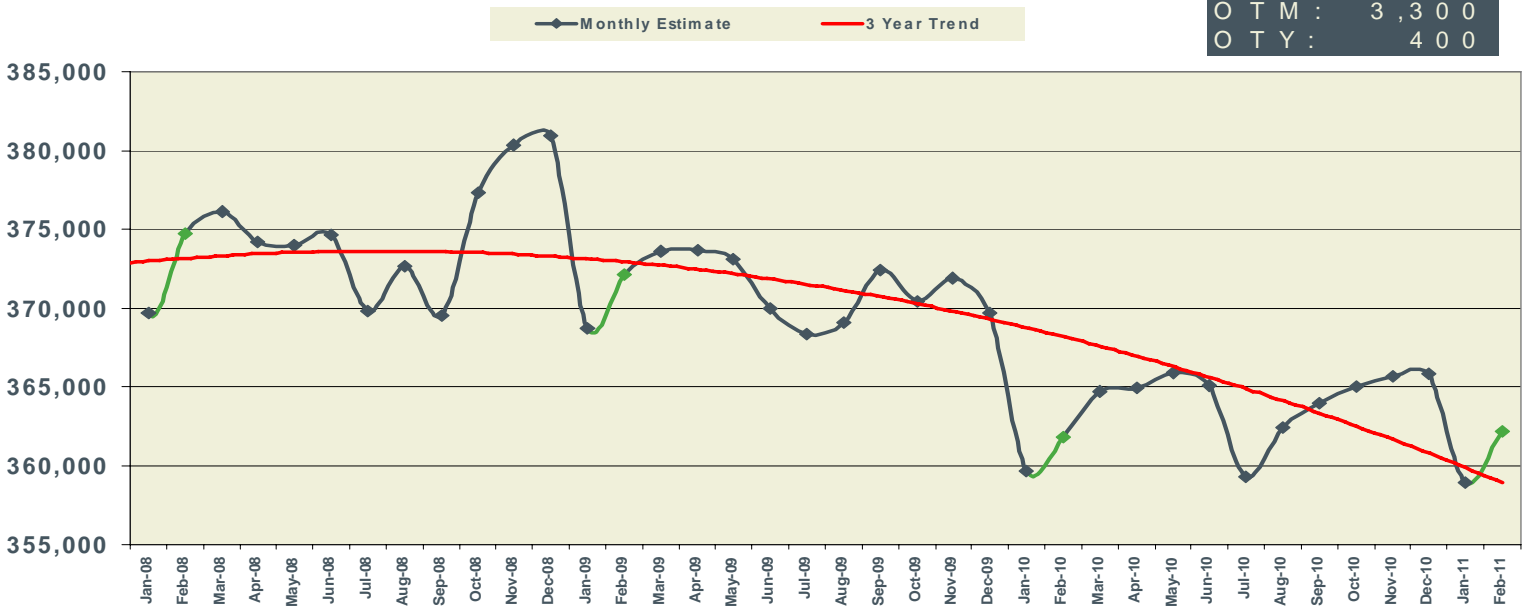
NSA
521,100
OTM: 2,600
OTY: 6,500



February 2011

Baton Rouge MSA Nonfarm Employment

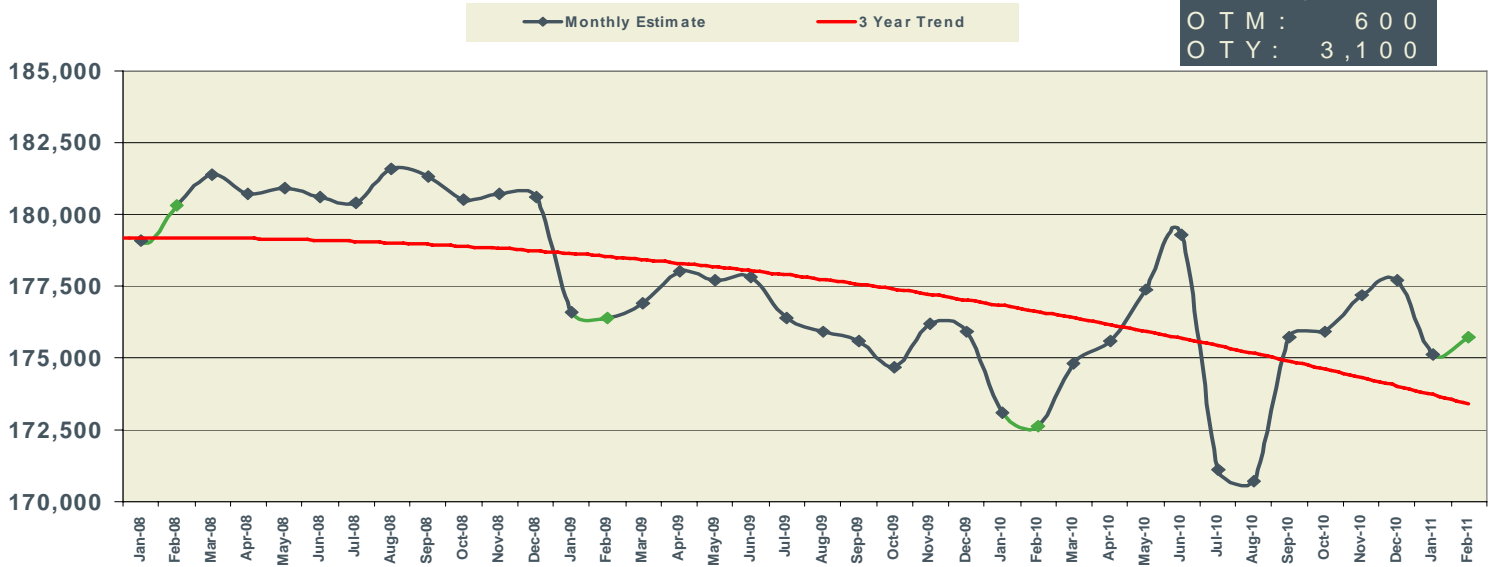
NSA
362,200
OTM: 3,300
OTY: 400



February 2011

Shreveport MSA Nonfarm Employment

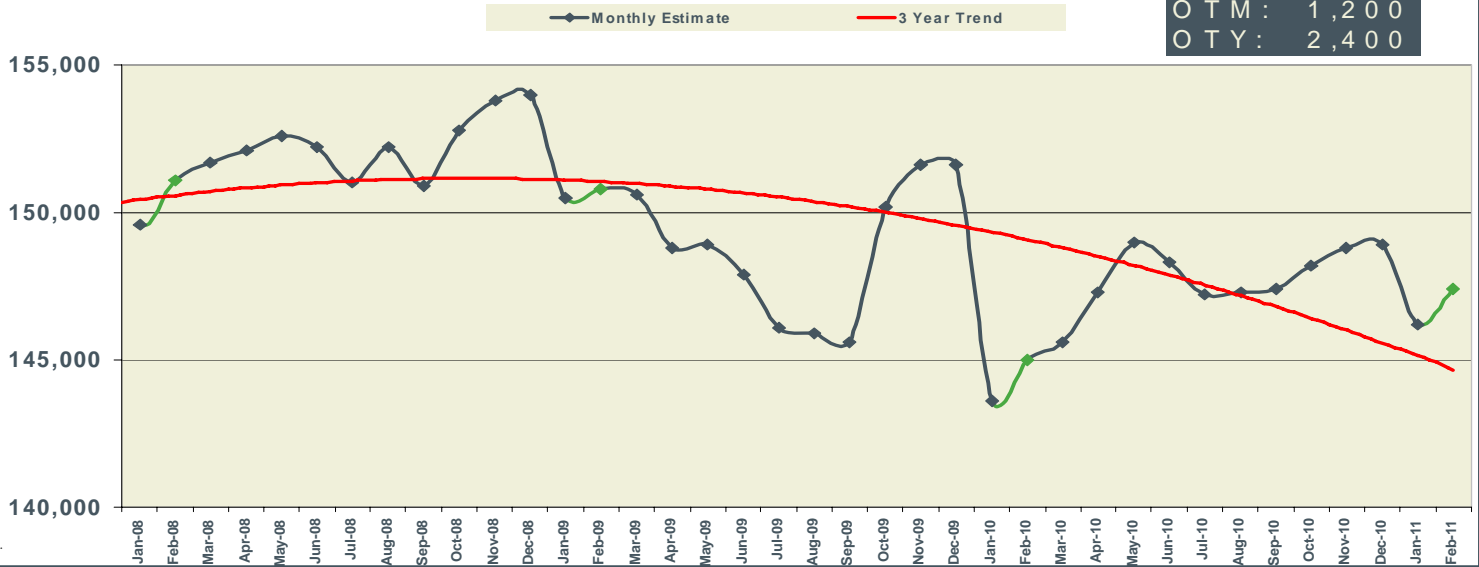
NSA	175,700
OTM :	600
OTY :	3,100



February 2011

Lafayette MSA Nonfarm Employment

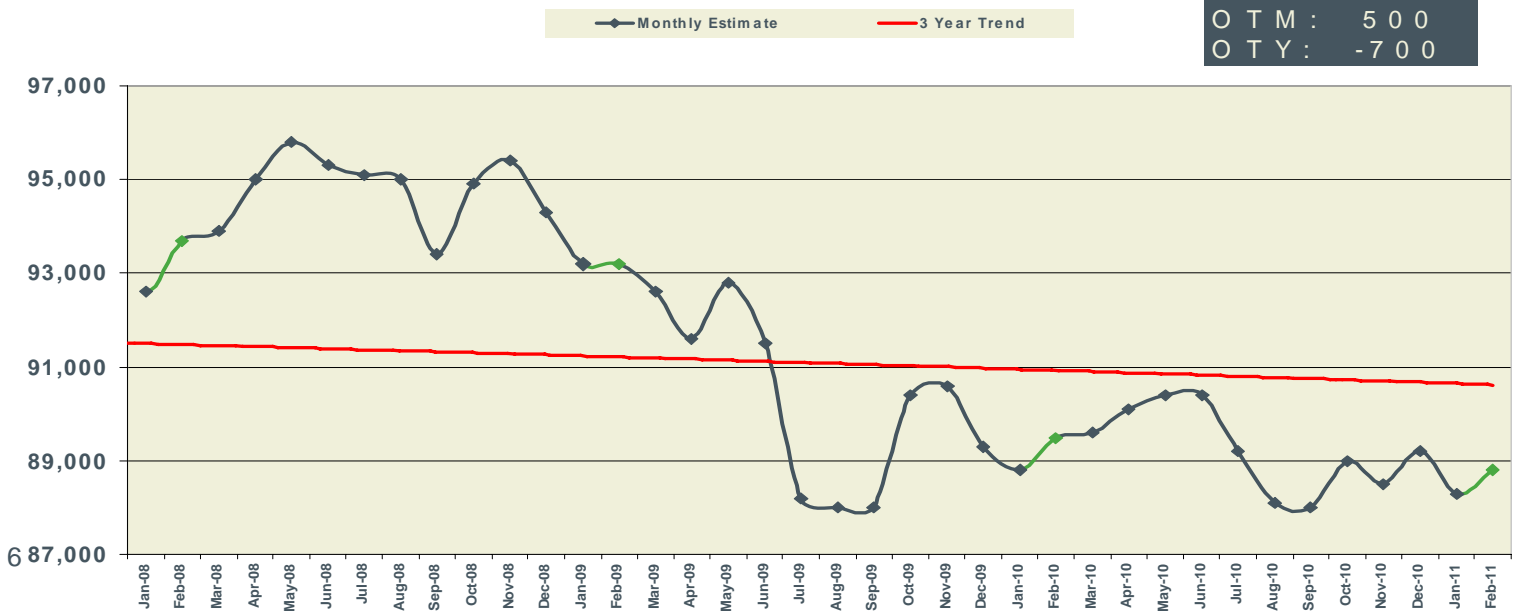
NSA	147,400
OTM :	1,200
OTY :	2,400



February 2011

Lake Charles MSA Nonfarm Employment

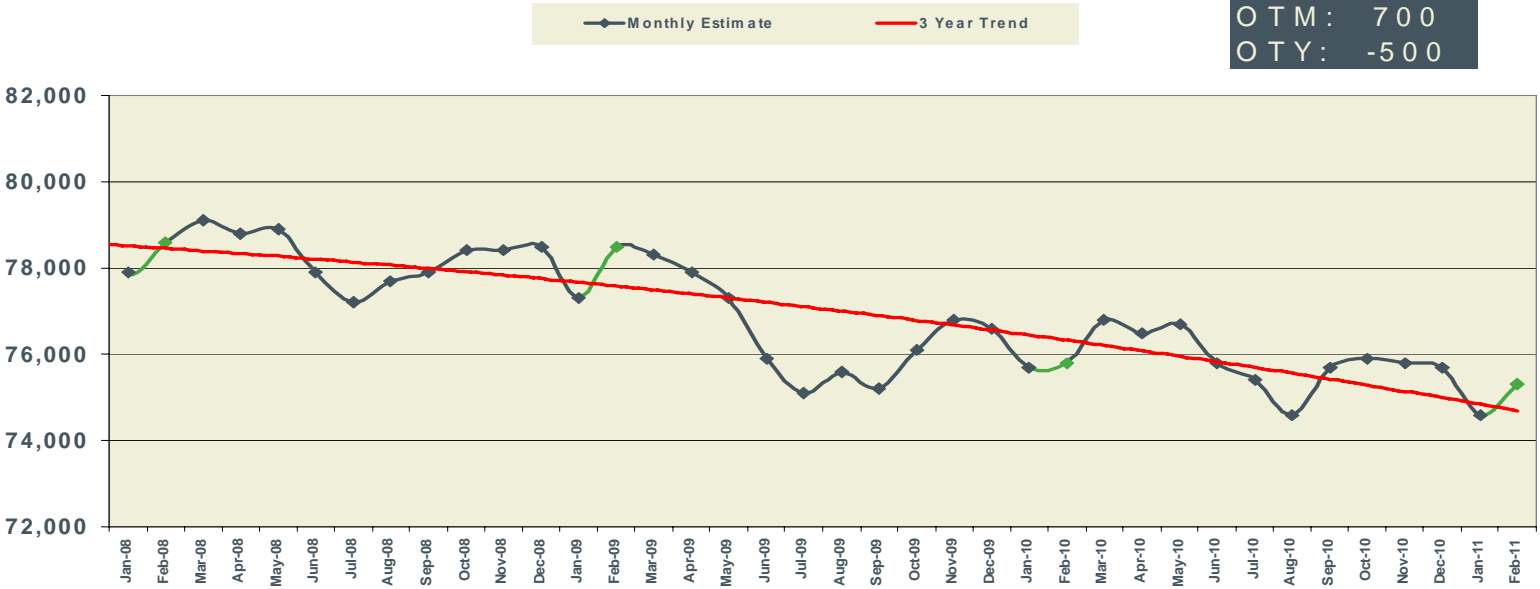
NSA	88,800
OTM :	500
OTY :	-700



February 2011

Monroe MSA Nonfarm Employment

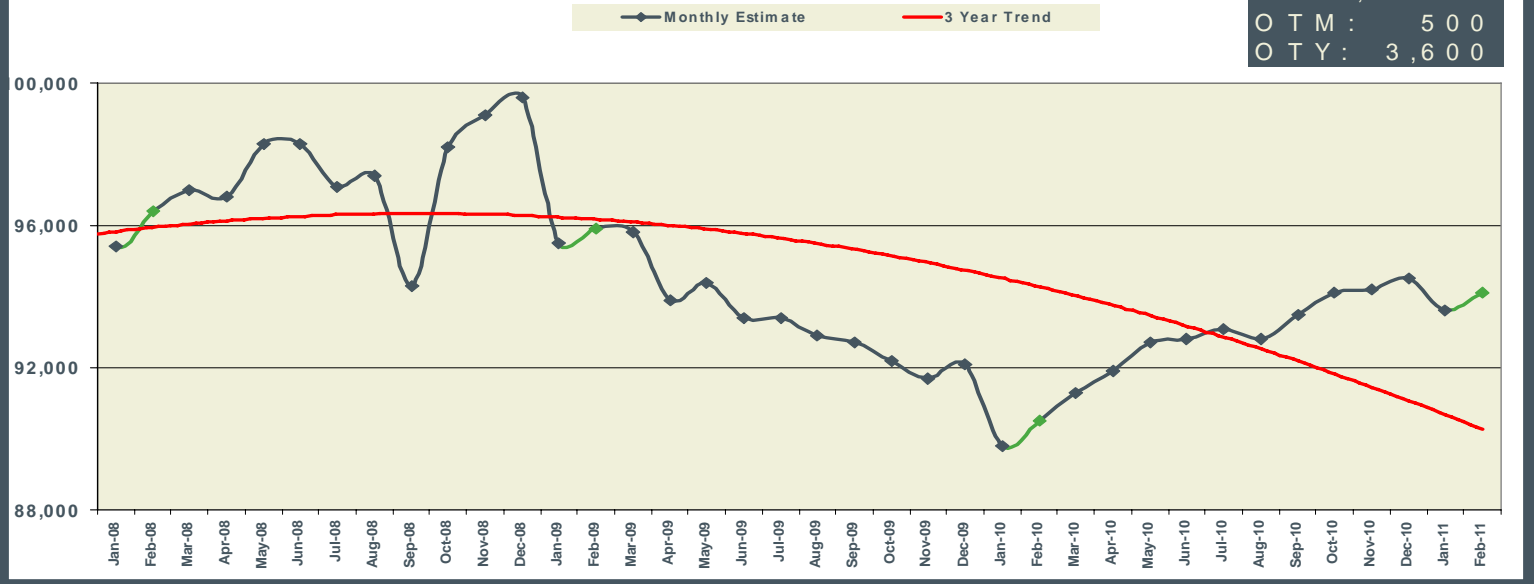
NSA
75,300
OTM: 700
OTY: -500



February 2011

Houma MSA Nonfarm Employment

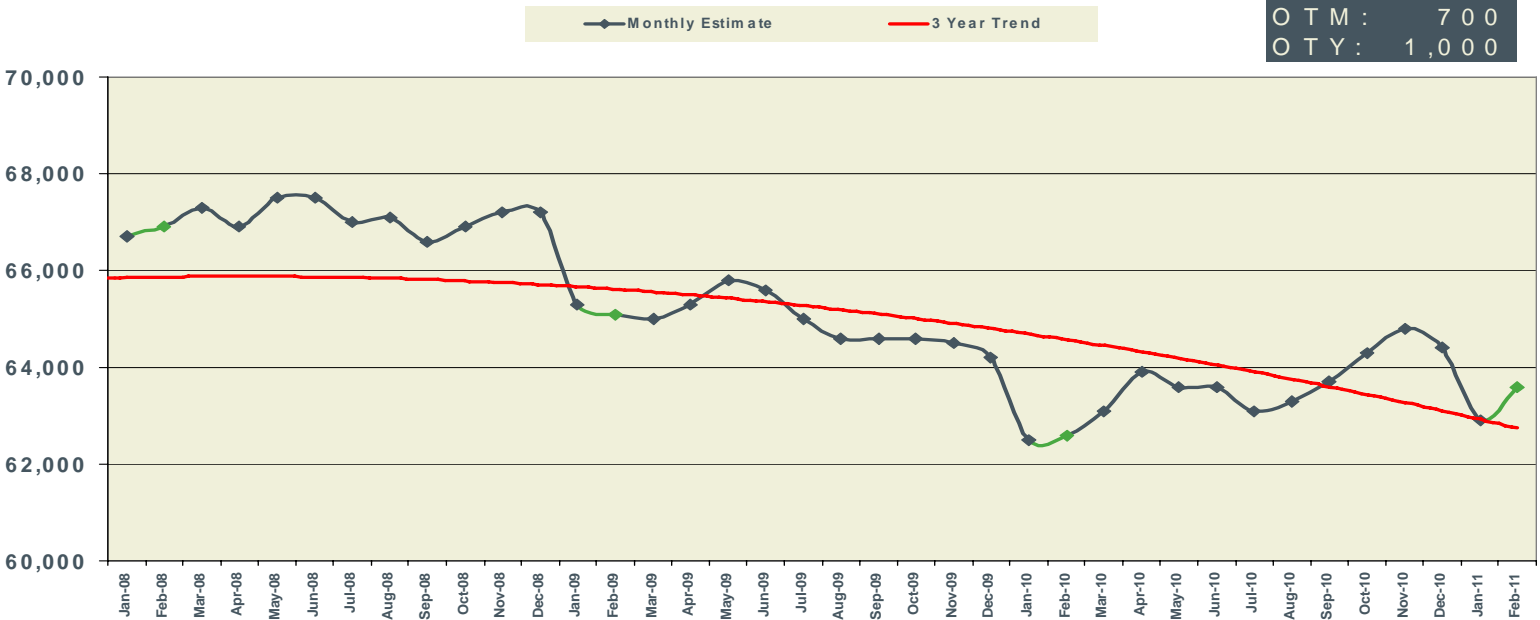
NSA
94,100
OTM: 500
OTY: 3,600



February 2011

Alexandria MSA Nonfarm Employment

NSA
63,600
OTM: 700
OTY: 1,000



Not Seasonally Adjusted	LOUISIANA			NEW ORLEANS-METAIRIE-KENNER MSA			BATON ROUGE MSA		
	PREL	REV	REV	PREL	REV	REV	PREL	REV	REV
	FEB	JAN	FEB	FEB	JAN	FEB	FEB	JAN	FEB
	2011	2011	2010	2011	2011	2010	2011	2011	2010
Total Nonfarm	1,885,900	1,873,400	1,864,700	521,100	518,500	514,600	362,200	358,900	361,800
Total Private	1,524,100	1,515,800	1,493,400	440,300	438,000	431,800	284,300	283,300	284,000
Goods-Producing	310,500	308,100	306,700	68,500	68,500	70,000	64,300	63,700	64,900
Mining & Logging	51,800	51,500	50,600	7,500	7,500	7,600	1,900	2,000	1,900
Oil & Gas Extraction	8,600	8,500	8,400						
Crude Petroleum & Natural Gas Extraction	7,900	7,800	7,900	2,800	2,800	2,900			
Support Activities for Mining	39,300	39,100	38,500						
Drilling Oil & Gas Wells	9,000	9,100	8,700						
Construction	122,100	119,500	120,300	30,100	30,000	30,100	37,800	37,100	38,300
Construction of Buildings	20,500	20,900	22,600				6,900	6,800	7,300
Residential Building Construction	5,700	5,600	6,000						
Nonresidential Building Construction	14,800	15,300	16,600				6,200	6,200	6,400
Heavy & Civil Engineering Construction	40,200	38,600	38,000	8,900	8,800	8,200	13,400	12,900	13,600
Utility System Construction	18,900	18,800	18,000						
Specialty Trade Contractors	61,400	60,000	59,700	15,900	15,700	16,300	17,500	17,400	17,400
Manufacturing	136,600	137,100	135,800	30,900	31,000	32,300	24,600	24,600	24,700
Durable Goods	68,500	69,200	69,400	15,000	15,200	16,500			
Transportation Equipment Manufacturing	15,900	16,400	17,100	6,900	7,200	8,500			
Ship & Boat Building	11,100	11,500	11,800	5,500	5,700	6,000			
Nondurable Goods	68,100	67,900	66,400	15,900	15,800	15,800	16,700	16,700	16,600
Food Manufacturing	15,100	15,300	15,100						
Paper Manufacturing	7,200	7,200	7,100						
Petroleum & Coal Products Mfg. & Chemical Mfg.									
Petroleum & Coal Products Manufacturing	11,600	11,500	11,500						
Chemical Manufacturing	22,900	22,800	22,200	4,400	4,400	4,300	9,400	9,400	9,300
Basic Chemical Manufacturing	12,300	12,300	12,100				5,600	5,600	5,500
Service-Providing	1,575,400	1,565,300	1,558,000	452,600	450,000	444,600	297,900	295,200	296,900
Private Service-Providing	1,213,600	1,207,700	1,186,700	371,800	369,500	361,800	220,000	219,600	219,100
Trade, Transportation, & Utilities	363,400	364,600	358,600	103,000	103,600	101,400	63,800	64,200	63,900
Wholesale Trade	69,700	70,400	69,400	21,900	22,000	22,000	12,100	12,200	12,400
Merchant Wholesalers, Durable Goods	36,800	37,000	36,000	10,500	10,400	10,700			
Merchant Wholesalers, Nondurable Goods	23,600	23,900	24,700	7,700	7,700	7,600			
Retail Trade	215,600	216,000	214,100	56,900	57,400	55,900	40,200	40,500	39,900
Clothing & Clothing Accessories Stores, General Merchandise									
Motor Vehicle & Parts Dealers	25,300	25,300	25,300						
Building Material & Garden Equipment & Supplies Dealers	19,200	18,700	19,100						
Food & Beverage Stores	35,200	35,000	35,900						
Grocery Stores	30,500	30,400	31,300	8,100	7,900	8,400	5,600	5,600	5,800
Health & Personal Care Stores	15,400	15,300	15,400						
Gasoline Stations	18,200	18,100	17,900						
Clothing and Clothing Accessories Stores	17,200	17,900	17,800						
General Merchandise Stores	51,200	52,300	50,200	12,400	12,500	11,900	9,100	9,300	9,000
Department Stores	16,400	16,900	16,000				2,400	2,500	2,500
Transportation, Warehousing, & Utilities	78,100	78,200	75,100	24,200	24,200	23,500	11,500	11,500	11,600
Transportation and Warehousing	69,200	69,100	65,700						
Truck Transportation	15,900	15,900	15,800						
Support Activities for Transportation	19,400	19,100	18,200						
Information	28,400	28,000	24,800	9,100	8,900	7,300	5,200	5,200	4,900
Telecommunications	10,400	10,500	10,800						
Financial Activities	92,300	92,400	91,600	25,500	25,500	25,700	16,700	16,700	17,300
Finance & Insurance	62,300	62,400	61,900	18,100	18,100	18,300	11,900	12,000	12,500
Credit Intermediation & Related Activities	31,600	31,700	32,200	7,500	7,500	7,600			
Depository Credit Intermediation	22,700	22,700	23,100	5,700	5,800	5,900	4,300	4,300	4,500
Insurance Carriers & Related Activities	26,400	26,300	25,600						
Real Estate & Rental & Leasing	30,000	30,000	29,700						
Professional & Business Services	192,100	191,600	188,200	66,400	66,400	66,600	41,600	41,300	41,100
Professional, Scientific, & Technical Services	80,700	80,000	80,900	28,600	28,800	29,000	19,100	18,800	18,200
Legal Services	18,800	18,900	18,900	8,200	8,300	8,200			
Accounting, Tax Preparation, Bookkeeping & Payroll Services	12,000	11,600	12,300						
Architectural, Engineering, & Related Services	23,400	23,200	22,700						
Management of Companies & Enterprises	23,600	23,800	23,500	8,000	8,100	8,200			
Admin. & Support & Waste Mgmt. & Remediation Serv.	87,800	87,800	83,800	29,800	29,500	29,400	17,600	17,700	18,000
Administrative & Support Services	78,600	78,700	76,200	27,300	27,100	27,500			
Employment Services	27,800	27,600	26,900	10,000	10,000	10,700			
Services to Buildings & Dwellings	18,600	18,600	17,600						
Education & Health Services	275,300	271,900	268,800	76,600	75,100	74,500	48,400	48,300	47,900
Educational Services	37,700	35,700	37,500	20,200	19,200	20,400			
Colleges, Universities, & Professional Schools	20,800	19,600	20,600	11,600	10,700	12,000			
Health Care & Social Assistance	237,600	236,200	231,300	56,400	55,900	54,100	41,900	42,100	41,000
Ambulatory Health Care Services	85,500	85,200	83,900	21,200	21,100	20,600	17,500	17,500	17,000
Offices of Physicians	33,100	32,800	33,100						
Home Health Care Services	21,600	21,600	20,700						
Hospitals	66,300	65,900	64,400	18,600	18,600	17,700	11,600	11,600	11,200
Nursing & Residential Care Facilities	41,600	41,400	40,200						
Nursing Care Facilities	25,800	25,700	25,200						
Social Assistance	44,200	43,700	42,800						
Leisure & Hospitality	196,600	193,400	189,600	72,400	71,300	67,900	31,700	31,300	31,300
Arts, Entertainment, & Recreation	27,000	26,900	26,500	10,100	10,200	9,400			
Amusement, Gambling, & Recreation Industries	21,000	20,700	20,400	5,900	5,800	5,500			
Gambling Industries	10,500	10,500	10,700	2,100	2,000	2,100			
Accommodation & Food Services	169,600	166,500	163,100	62,300	61,100	58,500	26,900	26,400	27,100
Accommodation	27,200	26,800	26,100	13,300	13,200	12,600			
Food Services & Drinking Places	142,400	139,700	137,000	49,000	47,900	45,900	25,000	24,600	24,900
Other Services	65,500	65,800	65,100	18,800	18,700	18,400	12,600	12,600	12,700
Repair & Maintenance	19,100	19,300	19,100						
Automotive Repair & Maintenance	10,500	10,500	10,700						
Personal & Laundry Services	15,200	15,100	15,300						
Government	361,800	357,600	371,300	80,800	80,500	82,800	77,900	75,600	77,800
Federal Government	31,100	31,500	32,000	12,300	12,400	12,500	3,000	3,000	3,200
State Government	112,800	107,700	115,100	19,200	18,900	20,800	41,700	39,400	41,200
Local Government	217,900	218,400	224,200	49,300	49,200	49,500	33,200	33,200	33,400

LOUISIANA & MSAs NONFARM EMPLOYMENT

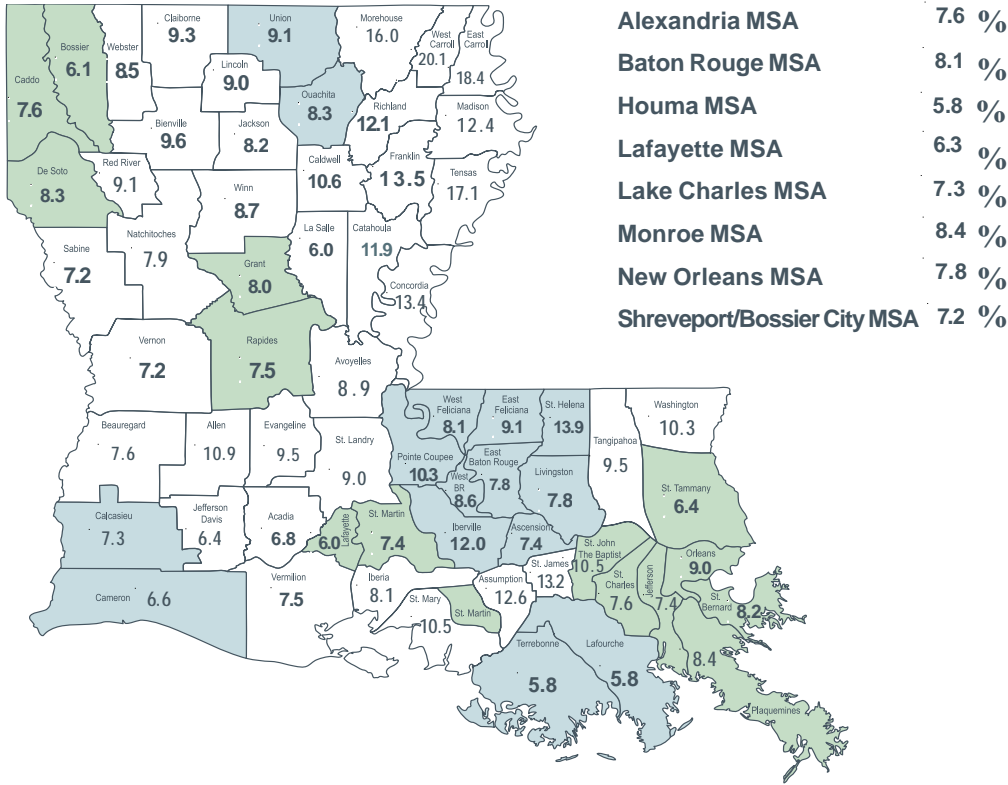
9

Not Seasonally Adjusted	SHREVEPORT-BOSSIER CITY MSA			LAFAYETTE MSA			LAKE CHARLES MSA		
	PREL	REV	REV	PREL	REV	REV	PREL	REV	REV
	FEB 2011	JAN 2011	FEB 2010	FEB 2011	JAN 2011	FEB 2010	FEB 2011	JAN 2011	FEB 2010
Total Nonfarm	177,900	177,300	172,600	147,400	146,200	145,000	88,800	88,300	89,500
Total Private	142,300	141,800	137,000	129,500	129,200	126,700	72,900	72,500	72,700
Goods-Producing	25,200	25,100	22,500	30,900	30,700	30,600	18,200	18,000	19,200
Mining & Logging	6,400	6,300	5,200	15,400	15,200	14,900	1,100	1,100	1,200
Oil & Gas Extraction									
Crude Petroleum & Natural Gas Extraction									
Support Activities for Mining				13,200	13,000	12,900			
Drilling Oil & Gas Wells									
Construction	9,000	9,000	7,800	5,900	5,900	6,700	8,100	8,000	9,000
Construction of Buildings									
Residential Building Construction									
Nonresidential Building Construction									
Heavy & Civil Engineering Construction							3,500	3,500	4,100
Utility System Construction									
Specialty Trade Contractors									
Manufacturing	9,800	9,800	9,500	9,600	9,600	9,000	9,000	8,900	9,000
Durable Goods									
Transportation Equipment Manufacturing	1,100	1,100	700						
Ship & Boat Building									
Nondurable Goods							6,800	6,800	6,800
Food Manufacturing									
Paper Manufacturing									
Petroleum & Coal Products Mfg. & Chemical Mfg.							6,400	6,400	6,400
Petroleum & Coal Products Manufacturing									
Chemical Manufacturing									
Basic Chemical Manufacturing									
Service-Providing	152,700	152,200	150,100	116,500	115,500	114,400	70,600	70,300	70,300
Private Service-Providing	117,100	116,700	114,500	98,600	98,500	96,100	54,700	54,500	53,500
Trade, Transportation, & Utilities	33,100	33,200	32,500	28,700	28,800	28,000	16,300	16,200	15,800
Wholesale Trade	6,500	6,600	6,300	7,600	7,600	7,300			
Merchant Wholesalers, Durable Goods									
Merchant Wholesalers, Nondurable Goods									
Retail Trade	20,400	20,400	20,200	17,300	17,400	17,000	10,000	9,900	10,000
Clothing & Clothing Accessories Stores, General Merchandise							3,200	3,300	3,400
Motor Vehicle & Parts Dealers									
Building Material & Garden Equipment & Supplies Dealers									
Food & Beverage Stores									
Grocery Stores									
Health & Personal Care Stores									
Gasoline Stations									
Clothing and Clothing Accessories Stores									
General Merchandise Stores	4,400	4,500	4,500	3,600	3,700	3,500			
Department Stores									
Transportation, Warehousing, & Utilities	6,200	6,200	6,000	3,800	3,800	3,700			
Transportation and Warehousing									
Truck Transportation									
Support Activities for Transportation									
Information	4,800	4,800	3,400	2,700	2,700	2,700			
Telecommunications									
Financial Activities	7,100	7,000	6,800	8,300	8,300	8,200			
Finance & Insurance									
Credit Intermediation & Related Activities									
Depository Credit Intermediation									
Insurance Carriers & Related Activities									
Real Estate & Rental & Leasing									
Professional & Business Services	16,400	16,300	16,200	17,100	17,100	16,600	6,800	6,800	6,800
Professional, Scientific, & Technical Services				8,100	8,100	7,700			
Legal Services									
Accounting, Tax Preparation, Bookkeeping & Payroll Services									
Architectural, Engineering, & Related Services									
Management of Companies & Enterprises									
Admin. & Support & Waste Mgmt. & Remediation Serv.	9,600	9,600	7,700						
Administrative & Support Services									
Employment Services									
Services to Buildings & Dwellings									
Education & Health Services	26,300	26,100	26,300	22,100	22,000	21,100			
Educational Services									
Colleges, Universities, & Professional Schools									
Health Care & Social Assistance	25,200	25,100	24,800	20,000	19,900	19,500			
Ambulatory Health Care Services									
Offices of Physicians									
Home Health Care Services									
Hospitals	9,700	9,700	9,600	5,300	5,300	5,400	3,500	3,500	3,400
Nursing & Residential Care Facilities									
Nursing Care Facilities									
Social Assistance									
Leisure & Hospitality	21,400	21,300	21,500	14,900	14,700	14,700	11,500	11,400	11,400
Arts, Entertainment, & Recreation	5,700	5,700	5,900						
Amusement, Gambling, & Recreation Industries	5,500	5,500	5,700						
Gambling Industries	4,300	4,400	4,700						
Accommodation & Food Services	15,700	15,600	15,600	13,100	12,900	13,000	10,100	10,000	10,000
Accommodation									
Food Services & Drinking Places	12,900	12,800	12,700	12,100	12,000	12,000			
Other Services	8,000	8,000	7,800	4,800	4,900	4,800			
Repair & Maintenance									
Automotive Repair & Maintenance									
Personal & Laundry Services									
Government	35,600	35,500	35,600	17,900	17,000	18,300	15,900	15,800	16,800
Federal Government	4,800	4,700	4,700	1,100	1,100	1,200	600	600	700
State Government	11,600	11,400	11,200	5,800	5,000	5,800	4,100	4,100	4,100
Local Government	19,200	19,400	19,700	11,000	10,900	11,300	11,200	11,100	12,000

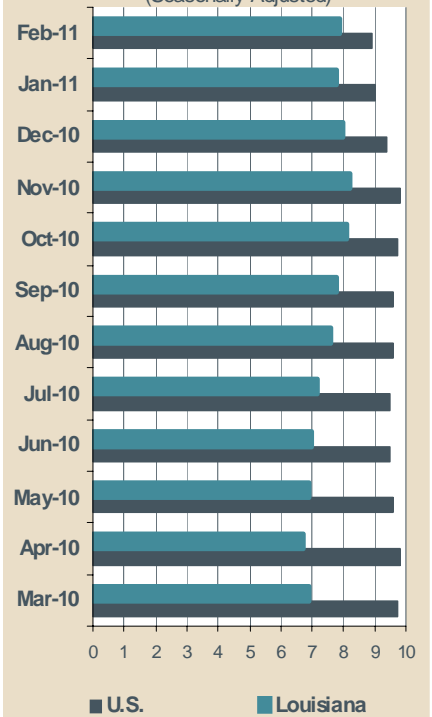
	MONROE MSA			HOUMA-BAYOU CANE- THIBODAOX MSA			ALEXANDRIA MSA		
	PREL	REV	REV	PREL	REV	REV	PREL	REV	REV
	FEB	JAN	FEB	FEB	JAN	FEB	FEB	JAN	FEB
	2011	2011	2010	2011	2011	2010	2011	2011	2010
<i>Not Seasonally Adjusted</i>									
Total Nonfarm	75,300	74,600	75,800	94,100	93,600	90,500	63,600	62,900	62,600
Total Private	60,900	60,600	60,900	80,300	79,900	75,700	48,700	48,100	47,400
Goods-Producing	10,200	10,200	10,000	19,900	19,800	19,400	8,400	8,300	8,200
Mining & Logging				5,700	5,700	5,700			
Oil & Gas Extraction									
Crude Petroleum & Natural Gas Extraction									
Support Activities for Mining				4,700	4,700	4,900			
Drilling Oil & Gas Wells									
Construction				5,900	5,900	4,900			
Construction of Buildings									
Residential Building Construction									
Nonresidential Building Construction									
Heavy & Civil Engineering Construction									
Utility System Construction									
Specialty Trade Contractors									
Manufacturing	6,700	6,700	6,700						
Durable Goods									
Transportation Equipment Manufacturing									
Ship & Boat Building									
Nondurable Goods	5,000	5,000	4,900						
Food Manufacturing									
Paper Manufacturing									
Petroleum & Coal Products Mfg. & Chemical Mfg.									
Petroleum & Coal Products Manufacturing									
Chemical Manufacturing									
Basic Chemical Manufacturing									
Service-Providing	65,100	64,400	65,800	74,200	73,800	71,100	55,200	54,600	54,400
Private Service-Providing	50,700	50,400	50,900	60,400	60,100	56,300	40,300	39,800	39,200
Trade, Transportation, & Utilities	13,600	13,600	13,800	24,000	24,100	23,300	11,400	11,400	11,200
Wholesale Trade									
Merchant Wholesalers, Durable Goods									
Merchant Wholesalers, Nondurable Goods									
Retail Trade	9,300	9,300	9,500	10,600	10,700	10,800	7,700	7,700	7,600
Clothing & Clothing Accessories Stores, General Merchandise	3,300	3,400	3,400						
Motor Vehicle & Parts Dealers									
Building Material & Garden Equipment & Supplies Dealers									
Food & Beverage Stores									
Grocery Stores									
Health & Personal Care Stores									
Gasoline Stations									
Clothing and Clothing Accessories Stores									
General Merchandise Stores									
Department Stores									
Transportation, Warehousing, & Utilities									
Transportation and Warehousing									
Truck Transportation									
Support Activities for Transportation				4,400	4,400	4,200			
Information									
Telecommunications									
Financial Activities									
Finance & Insurance									
Credit Intermediation & Related Activities									
Depository Credit Intermediation									
Insurance Carriers & Related Activities									
Real Estate & Rental & Leasing									
Professional & Business Services	7,200	7,200	7,300						
Professional, Scientific, & Technical Services									
Legal Services									
Accounting, Tax Preparation, Bookkeeping & Payroll Services									
Architectural, Engineering, & Related Services									
Management of Companies & Enterprises									
Admin. & Support & Waste Mgmt. & Remediation Serv.									
Administrative & Support Services				4,800	4,700	3,600			
Employment Services				3,100	3,100	2,100			
Services to Buildings & Dwellings									
Education & Health Services	13,300	13,100	12,800						
Educational Services									
Colleges, Universities, & Professional Schools									
Health Care & Social Assistance									
Ambulatory Health Care Services									
Offices of Physicians									
Home Health Care Services									
Hospitals	3,600	3,600	3,500				4,300	4,400	4,000
Nursing & Residential Care Facilities									
Nursing Care Facilities									
Social Assistance									
Leisure & Hospitality	6,800	6,700	6,900	7,500	7,400	7,200			
Arts, Entertainment, & Recreation									
Amusement, Gambling, & Recreation Industries									
Gambling Industries									
Accommodation & Food Services									
Accommodation									
Food Services & Drinking Places									
Other Services									
Repair & Maintenance									
Automotive Repair & Maintenance									
Personal & Laundry Services									
Government	14,400	14,000	14,900	13,800	13,700	14,800	14,900	14,800	15,200
Federal Government	600	600	600	400	400	500	2,900	3,000	2,900
State Government	4,700	4,200	4,900	3,200	2,800	3,500	4,600	4,500	4,900
Local Government	9,100	9,200	9,400	10,200	10,500	10,800	7,400	7,300	7,400

Louisiana Unemployment Rates (Not Seasonally Adjusted)

February 2011

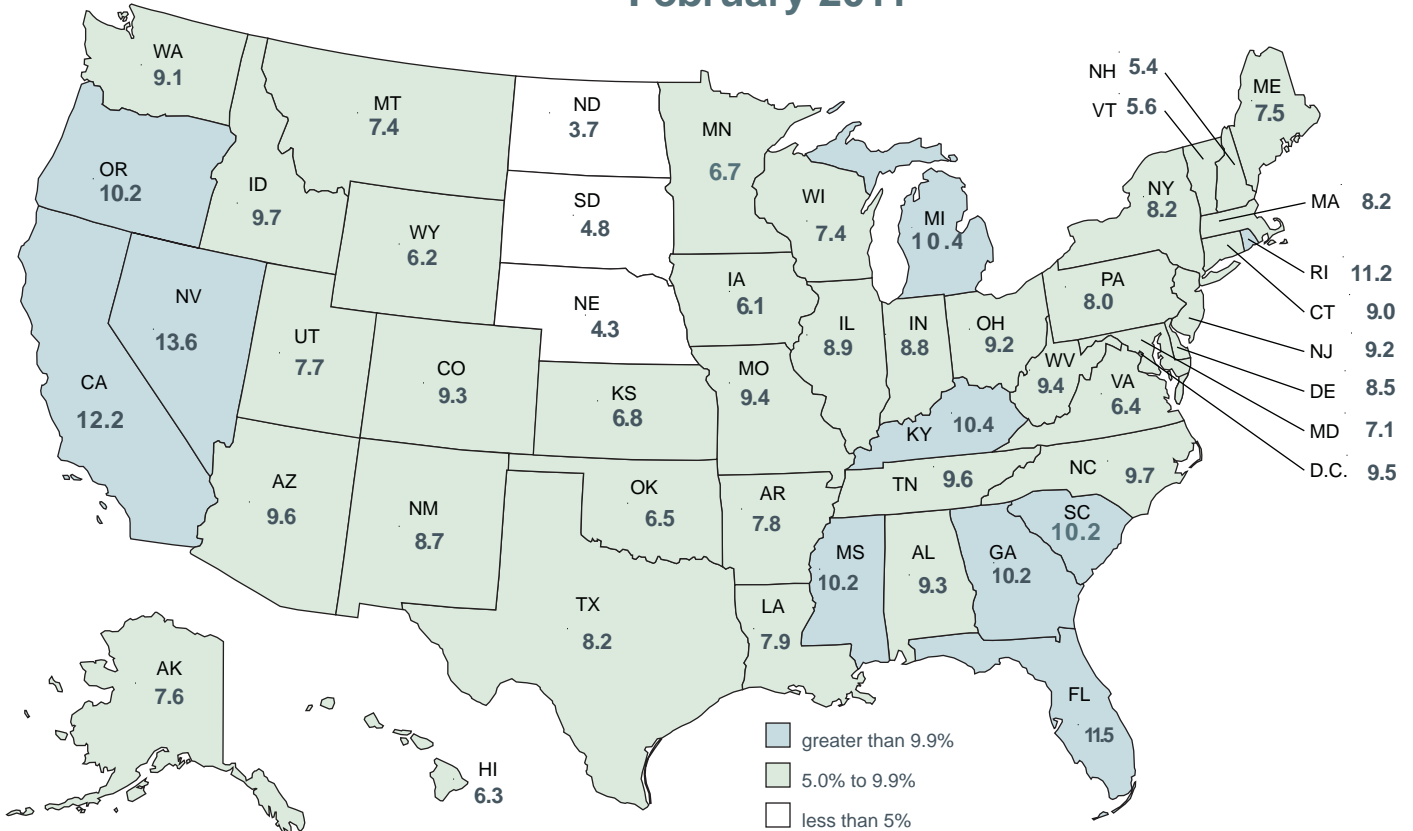


United States - Louisiana Unemployment Rates (Seasonally Adjusted)



United States Unemployment Rates (Seasonally Adjusted)

February 2011



United States Rate 8.9

CIVILIAN LABOR FORCE (Not Seasonally Adjusted)

Area	Preliminary February 2011			Revised January 2011			Revised February 2010		
	Employed	Unemployed	Rate	Employed	Unemployed	Rate	Employed	Unemployed	Rate
UNITED STATES	138,093,000	14,542,000	9.5	137,599,000	14,937,000	9.8	137,203,000	15,991,000	10.4
LOUISIANA	1,881,116	162,845	8.0	1,882,086	176,987	8.6	1,894,859	139,377	6.9
ALEXANDRIA MSA	62,871	5,158	7.6	62,635	5,594	8.2	63,090	4,356	6.5
Grant	7,868	687	8.0	7,839	796	9.2	7,896	623	7.3
Rapides	55,003	4,471	7.5	54,796	4,798	8.1	55,194	3,733	6.3
BATON ROUGE MSA	342,222	30,014	8.1	340,691	32,473	8.7	347,764	24,443	6.6
Ascension	46,848	3,736	7.4	46,638	4,102	8.1	47,606	3,203	6.3
East Baton Rouge	197,662	16,659	7.8	196,778	17,937	8.4	200,863	13,586	6.3
East Feliciana	7,270	729	9.1	7,237	805	10.0	7,388	553	7.0
Iberville	10,876	1,477	12.0	10,827	1,569	12.7	11,052	1,158	9.5
Livingston	53,511	4,557	7.8	53,271	4,893	8.4	54,377	3,755	6.5
Pointe Coupee	8,561	981	10.3	8,523	1,065	11.1	8,700	646	6.9
St. Helena	3,648	591	13.9	3,631	637	14.9	3,707	484	11.5
West Baton Rouge	9,606	909	8.6	9,563	1,043	9.8	9,762	714	6.8
West Feliciana	4,241	375	8.1	4,222	421	9.1	4,310	345	7.4
HOUMA-BAYOU CANE- THIBODAUX MSA	97,186	5,966	5.8	97,269	6,564	6.3	95,334	5,063	5.0
Lafourche	45,890	2,825	5.8	45,930	3,090	6.3	45,016	2,270	4.8
Terrebonne	51,296	3,141	5.8	51,339	3,474	6.3	50,318	2,793	5.3
LAFAYETTE MSA	125,754	8,404	6.3	125,205	9,194	6.8	125,821	7,442	5.6
Lafayette	103,985	6,662	6.0	103,531	7,288	6.6	104,041	5,822	5.3
St. Martin	21,769	1,742	7.4	21,674	1,906	8.1	21,780	1,620	6.9
LAKE CHARLES MSA	86,075	6,792	7.3	86,249	7,473	8.0	88,304	5,957	6.3
Calcasieu	83,246	6,593	7.3	83,414	7,253	8.0	85,402	5,767	6.3
Cameron	2,829	199	6.6	2,835	220	7.2	2,902	190	6.1
MONROE MSA	73,303	6,752	8.4	72,941	7,179	9.0	74,955	5,855	7.2
Ouachita	64,349	5,851	8.3	64,031	6,237	8.9	65,799	4,989	7.0
Union	8,954	901	9.1	8,910	942	9.6	9,156	866	8.6
NEW ORLEANS-METairie- KENNER MSA	494,175	41,879	7.8	494,313	45,434	8.4	497,313	35,198	6.6
Jefferson	195,789	15,754	7.4	195,844	16,813	7.9	197,033	13,535	6.4
New Orleans City/O'leans	132,892	13,112	9.0	132,929	14,739	10.0	133,736	10,926	7.6
Plaquemines	7,379	674	8.4	7,381	731	9.0	7,426	468	5.9
St. Bernard	16,775	1,492	8.2	16,780	1,604	8.7	16,881	1,154	6.4
St. Charles	21,963	1,794	7.6	21,970	1,900	8.0	22,103	1,588	6.7
St. John Baptist	18,499	2,171	10.5	18,504	2,295	11.0	18,616	1,876	9.2
St. Tammany	100,877	6,881	6.4	100,905	7,352	6.8	101,518	5,652	5.3
SHREVEPORT-BOSSIER CITY MSA	168,660	13,080	7.2	168,757	14,337	7.8	168,730	12,124	6.7
Bossier	50,025	3,271	6.1	50,053	3,582	6.7	50,045	2,921	5.5
Caddo	108,293	8,875	7.6	108,356	9,732	8.2	108,338	8,356	7.2
De Soto	10,342	934	8.3	10,348	1,023	9.0	10,346	847	7.6
NON-MSA PARISHES									
Acadia (Crowley) ¹	23,691	1,737	6.8	23,858	1,939	7.5	23,784	1,647	6.5
Allen	7,615	935	10.9	7,740	1,123	12.7	7,768	948	10.9
Assumption (Pierre Part) ¹	8,986	1,290	12.6	9,033	1,386	13.3	9,115	954	9.5
Avoyelles	14,911	1,465	8.9	15,004	1,636	9.8	14,933	1,226	7.6
Beauregard (DeRidder) ¹	13,241	1,087	7.6	13,427	1,256	8.6	13,203	976	6.9
Bienville	5,830	619	9.6	5,888	664	10.1	5,648	552	8.9
Caldwell	4,009	473	10.6	4,074	503	11.0	3,998	459	10.3
Catahoula	3,714	503	11.9	3,798	520	12.0	3,781	420	10.0
Claiborne	5,937	611	9.3	6,010	667	10.0	5,885	555	8.6
Concordia (Natchez, MS-LA) ¹	6,285	972	13.4	6,333	917	12.6	6,489	814	11.1
East Carroll	2,348	528	18.4	2,444	548	18.3	2,496	412	14.2
Evangeline	11,248	1,187	9.5	11,364	1,321	10.4	11,461	1,006	8.1
Franklin	6,670	1,044	13.5	6,802	1,103	14.0	6,768	832	10.9
Iberia (New Iberia) ¹	29,780	2,609	8.1	29,952	2,837	8.7	30,010	2,525	7.8
Jackson (Ruston) ¹	5,923	531	8.2	5,951	559	8.6	5,938	478	7.5
Jefferson Davis (Jennings) ¹	13,344	916	6.4	13,473	1,021	7.0	13,345	823	5.8
La Salle	6,316	401	6.0	6,369	445	6.5	6,121	379	5.8
Lincoln (Ruston) ¹	17,593	1,740	9.0	17,675	1,914	9.8	17,635	1,377	7.2
Madison (Tallulah) ¹	3,959	558	12.4	4,030	592	12.8	4,031	445	9.9
Morehouse (Bastrop) ¹	9,350	1,778	16.0	9,543	1,878	16.4	9,570	1,629	14.5
Natchitoches (Natchitoches) ¹	15,559	1,343	7.9	15,449	1,535	9.0	15,579	1,228	7.3
Red River	3,298	331	9.1	3,343	362	9.8	3,203	294	8.4
Richland	8,042	1,105	12.1	8,116	1,161	12.5	7,903	908	10.3
Sabine	8,726	677	7.2	8,854	760	7.9	8,564	616	6.7
St. James	8,210	1,252	13.2	8,256	1,294	13.5	8,347	902	9.8
St. Landry (Opelousas, Eunice) ¹	34,536	3,421	9.0	34,610	3,699	9.7	34,837	2,986	7.9
St. Mary (Morgan City) ¹	20,195	2,363	10.5	20,292	2,510	11.0	20,789	2,032	8.9
Tangipahoa (Hammond) ¹	47,887	5,055	9.5	47,926	5,507	10.3	47,624	4,090	7.9
Tensas	1,511	311	17.1	1,611	340	17.4	1,642	299	15.4
Vermilion (Abbeville) ¹	21,689	1,768	7.5	21,849	1,970	8.3	22,097	1,692	7.1
Vernon (Fort Polk South) ¹	19,051	1,485	7.2	19,137	1,700	8.2	19,169	1,204	5.9
Washington (Bogalusa) ¹	13,773	1,581	10.3	13,866	1,712	11.0	14,211	1,400	9.0
Webster (Mindon) ¹	18,173	1,691	8.5	18,215	1,817	9.1	18,341	1,467	7.4
West Carroll	3,397	854	20.1	3,507	882	20.1	3,530	846	19.3
Winn	6,077	577	8.7	6,227	658	9.6	5,732	518	8.3

¹In addition to the eight (8) Metropolitan Statistical Areas (MSAs) in Louisiana, there are seventeen (17) Micropolitan Statistical Areas (MCs): Jackson and Lincoln Parishes combine to constitute one MC area. Civilian Labor Force can be derived by adding employed and unemployed. For related information or data, please visit: www.bls.gov/lau/home.htm.

LOUISIANA - PRIVATE EMPLOYMENT (Not Seasonally Adjusted)

	Avg. Weekly Earnings (\$)			Avg. Weekly Hours			Avg. Hourly Earnings (\$)		
	FEB	JAN	FEB	FEB	JAN	FEB	FEB	JAN	FEB
	2011	2011	2010	2011	2011	2010	2011	2011	2010
Total Private	723.81	732.92	695.45	36.1	36.5	35.5	20.05	20.08	19.59
Goods-Producing	986.56	990.24	942.62	41.4	41.8	40.3	23.83	23.69	23.39
Private Service-Providing	657.72	668.45	632.15	34.8	35.2	34.3	18.90	18.99	18.43
Construction	899.13	909.72	869.41	41.0	42.0	40.4	21.93	21.66	21.52
Manufacturing	995.92	983.28	951.62	40.9	40.8	39.9	24.35	24.10	23.85
Trade, Transportation, and Utilities	648.70	666.37	618.55	36.9	37.0	36.3	17.58	18.01	17.04
Financial Activities	731.58	724.83	689.01	36.8	37.0	35.1	19.88	19.59	19.63
Professional and Business Services	984.40	999.99	914.76	40.0	41.0	38.5	24.61	24.39	23.76
Education and Health Services	568.18	579.89	555.84	32.9	33.5	32.0	17.27	17.31	17.37
Leisure and Hospitality	327.61	327.12	326.61	26.7	25.9	27.4	12.27	12.63	11.92

METROPOLITAN STATISTICAL AREA (MSA) PRIVATE EMPLOYMENT (Not Seasonally Adjusted)

	Avg. Weekly Earnings (\$)			Avg. Weekly Hours			Avg. Hourly Earnings (\$)		
	FEB	JAN	FEB	FEB	JAN	FEB	FEB	JAN	FEB
	2011	2011	2010	2011	2011	2010	2011	2011	2010
Alexandria	640.10	637.63	484.13	35.8	36.9	32.8	17.88	17.28	14.76
Baton Rouge	770.40	772.83	737.33	36.0	36.3	33.9	21.40	21.29	21.75
Houma	835.02	832.40	806.34	40.3	40.0	39.2	20.72	20.81	20.57
Lafayette	743.11	749.25	642.25	37.1	37.5	35.9	20.03	19.98	17.89
Lake Charles	818.47	805.91	731.10	40.2	39.7	36.5	20.36	20.30	20.03
Monroe	545.25	561.49	514.42	35.2	34.3	34.0	15.49	16.37	15.13
New Orleans	826.19	838.37	824.33	36.3	36.9	37.9	22.76	22.72	21.75
Shreveport	671.60	648.04	608.42	33.1	34.0	34.2	20.29	19.06	17.79

AVERAGE HOURS AND EARNINGS FOR PRODUCTION WORKERS IN MANUFACTURING AND SELECTED NONMANUFACTURING INDUSTRIES (Not Seasonally Adjusted)

	Avg. Weekly Earnings (\$)			Avg. Weekly Hours			Avg. Hourly Earnings (\$)		
	FEB	JAN	FEB	FEB	JAN	FEB	FEB	JAN	FEB
	2011	2011	2010	2011	2011	2010	2011	2011	2010
Louisiana									
Mining & Logging	989.78	993.19	937.26	41.5	41.4	41.0	23.85	23.99	22.86
Manufacturing	907.55	903.10	883.44	41.9	41.2	40.9	21.66	21.92	21.60
Durable Goods	905.22	900.15	792.30	42.8	42.5	38.8	21.15	21.18	20.42
Nondurable Goods	907.39	907.44	983.66	40.8	39.8	43.2	22.24	22.80	22.77
New Orleans MSA									
Ship and Boat Building	823.50	824.35	726.53	37.5	37.2	35.2	21.96	22.16	20.64

The 96,800 production workers in all manufacturing earned an average of \$907.55 per week in February 2011. Average weekly hours were 41.9, and average hourly earnings were \$21.66.

LOUISIANA UNEMPLOYMENT INSURANCE by CLAIMANT'S PARISH of RESIDENCE

WEEK ENDING - February 12, 2011

RLMA/PARISH	INITIAL CLAIMS	WEEKS CLAIMED	RLMA/PARISH	INITIAL CLAIMS	WEEKS CLAIMED	RLMA/PARISH	INITIAL CLAIMS	WEEKS CLAIMED
RLMA 1	1,007	11,898	RLMA 4	529	6,048	RLMA 7	411	5,359
JEFFERSON	419	4,677	ACADIA	37	406	BIENVILLE	12	179
ORLEANS	259	3,827	EVANGELINE	27	319	BOSSIER	64	789
PLAQUEMINES	18	208	IBERIA	76	691	CADDO	188	2,496
ST. BERNARD	0	1	LAFAYETTE	161	1,843	CLAIBORNE	8	128
ST. CHARLES	35	487	ST. LANDRY	81	1,041	DESOTO	23	219
ST. JAMES	32	423	ST. MARTIN	38	449	LINCOLN	41	508
ST. JOHN	62	711	ST. MARY	64	812	NATCHITOCHEs	21	305
ST. TAMMANY	182	1,564	VERMILION	45	487	RED RIVER	6	91
						SABINE	11	140
						WEBSTER	37	504
RLMA 2	829	10,486	RLMA 5	259	2,562	RLMA 8	302	4,105
ASCENSION	107	1,049	ALLEN	20	209	CALDWELL	7	117
E. BATON ROUGE	374	4,792	BEAUREGARD	30	315	EAST CARROLL	6	169
EAST FELICIANA	10	200	CALCASIEU	184	1,794	FRANKLIN	32	357
IBERVILLE	30	465	CAMERON	2	48	JACKSON	12	157
LIVINGSTON	105	1,274	JEFF. DAVIS	23	196	MADISON	4	159
POINTE COUPEE	21	283	RLMA 6	293	2,916	MOREHOUSE	37	544
ST. HELENA	6	92	AVOYELLES	28	418	OUACHITA	144	1,684
TANGIPAHOA	117	1,560	CATAHOULA	14	147	RICHLAND	20	380
WASHINGTON	31	411	CONCORDIA	22	207	TENSAS	3	92
W. BATON ROUGE	20	292	GRANT	33	161	UNION	23	240
WEST FELICIANA	8	68	LASALLE	13	83	WEST CARROLL	14	206
			RAPIDES	128	1,245			
RLMA 3	173	1,961	VERNON	48	521			
ASSUMPTION	29	424	WINN	7	134			
LAFOURCHE	72	716						
TERREBONNE	72	821						

RLMA = REGIONAL LABOR MARKET AREA

THE ABOVE FIGURES INCLUDE REGULAR UNEMPLOYMENT INSURANCE (UI), UNEMPLOYMENT CLAIMS for FEDERAL EMPLOYEES (UCFE), and UNEMPLOYMENT CLAIMS for EX-SERVICE MEMBERS (UCX) DATA ONLY.

Labor Market Questions and Answers!

Where can I find information on career assessment tools to plan a new career?

The Louisiana Workforce Commission's (LWC) Web site <http://www.laworks.net> has career information and assessment tools.

On the LWC home page select Career Solutions from the menu in the top right section.

- Selections are available for the following:
- How to Post Your Résumé and Search for Jobs (PDF)
- Career Compass – Finding the Right Job (PDF)
- Disability Program Navigator Initiative (PDF)
- Search for Jobs
- Post Your Résumé
- Career Services
- Bureau of Labor Statistics (BLS) Spotlight
- Career Planning Guide
- Louisiana Youth Works
- Louisiana Licensing Guide
- Apprenticeship

Glossary & Technical Notes

Average Hourly Earnings/Average Weekly Earnings/ Average Weekly Hours (CES/BLS) - average total money earnings, in the survey week (i.e., the week that includes the twelfth of the month), of production workers plus nonsupervisory workers not in production, including overtime, paid vacation and sick leave.

Civilian Labor Force - that portion of the population, age sixteen or older, which is employed or unemployed and actively seeking employment during the reference week of the twelfth of the month.

Employed - the members of the labor force who worked for pay or profit, or had a job from which they were temporarily absent because of illness, vacation, labor dispute, or other reasons not reflecting a shortage of work, or who worked fifteen hours or more as unpaid workers in an enterprise operated by a member of the family.

Unemployed - the members of the labor force who did not work but were seeking work or were awaiting recall from layoffs or the beginning of a new job within thirty days.

Unemployment Rate - the number of unemployed persons expressed as a percentage of the labor force.

Continued Claim - each week claimed subsequent to the filing of the initial claim for a week of unemployment compensation.

Current Employment Statistics (CES) - estimates of nonfarm employment and production workers hours and earnings by industry. They are produced as part of a nationwide program, in cooperation with the Bureau of Labor Statistics (BLS), for the state and each metropolitan statistical area (MSA) from a sample of employing establishments.

Current Population Survey (CPS) - a monthly household survey of the U.S. population conducted for the Bureau of Labor Statistics (BLS) by the Bureau of Census, of 56,000 selected households. Respondents are interviewed to obtain information on the employment status of each household member age 16 and over, during the reference week of the twelfth.

Durable Goods - items with a normal life expectancy of three years or more. Automobiles, furniture, household appliances, and mobile homes are examples.

Initial Claims - a new claim, filed to open a claim for unemployment compensation.

Metropolitan Statistical Area (MSA) - a geographical area comprised of a parish generally containing a central city (or twin cities) of 50,000 inhabitants or more and contiguous parishes that are socially and economically integrated with the central city.

Micropolitan Statistical Area (MC) - a geographical area comprised of a parish containing a central city of at least 10,000 but less than 50,000 inhabitants and contiguous parishes that are socially and economically integrated with the central city.

NAICS (North American Industry Classification System) - an industry classification system that groups establishments into industries based on the activities in which they are primarily engaged.

Nonfarm Employment - employment by place of work that does not include the self employed, unpaid family workers, domestics, or agriculture workers. All estimates of nonfarm employment in this publication are in cooperation with the U.S. Department of Labor Bureau of Labor Statistics and include all full-time and part-time workers who were employed during the pay period including the twelfth of the month.

Nondurable Goods - items that generally last for only a short period of time (less than three years). Food, beverages, apparel, and gasoline are common examples.

Seasonally Adjusted - monthly data that is adjusted to minimize the changes in any time series which result from normal annual occurrences such as Christmas, summer vacations, and weather patterns.

Subsector - refers to the three-digit NAICS code, which will fall under the particular sector. Example: If Manufacturing (31-33) is the industry sector, then Food manufacturing (311), Paper manufacturing (322), Chemical manufacturing (325), Transportation equipment manufacturing (336), are some of the subsectors of manufacturing.

Supersector - refers to these five categories: Total Nonfarm, Total Private, Goods-Producing, Service-Providing, and Private Service-Providing.

Summary Industry Sector - a combination of industry sectors. A summary sector may or may not be published. The summary industry sectors are Mining & Logging; Construction; Manufacturing; Trade, Transportation, & Utilities; Information; Financial Activities; Professional & Business Services; Education & Health Services; Leisure & Hospitality; Other Services; and Government.

Industry Sector - 20 industry sectors based on two-digit NAICS code. They are Agriculture, Forestry, Fishing and Hunting (11), Mining (21), Utilities (22), Construction (23), Manufacturing (31-33), Wholesale Trade (42), Retail Trade (44-45), Transportation and Warehousing (48-49), Information (51), Finance and Insurance (52), Real Estate and Rental and Leasing (53), Professional and Technical Services (54), Management of Companies and Enterprises (55), Administrative and Waste Services (56), Educational Services (61), Health Care and Social Assistance (62), Arts, Entertainment, and Recreation (71), Accommodation and Food Services (72), Other Services (81), and Public Administration (92).

Constraints of the monthly civilian labor force and nonfarm employment estimates:

The civilian labor force estimates are derived by a monthly survey of approximately 750 households throughout Louisiana following the Bureau of Labor Statistics (BLS) methodology. The US Census Bureau conducts the survey by calling randomly selected households and providing BLS with survey results. Households are asked for the number of residents who are sixteen and over and whether they were working or actively looking for work during the week of the twelfth of the month. Responses to these questions become part of the formula to determine the number of people employed and the number of individuals unemployed for the state, MSAs, and each parish every month.

The nonfarm employment estimates are derived from responses received from the monthly BLS survey of 2,757 businesses across the state surveyed directly by this agency, and an additional 2,500 businesses that respond directly to BLS with their employment data. Responses capture employment activity during the twelfth of each month. This survey relies on responses from these businesses to produce industry employment levels for the state and all metropolitan statistical areas.

Both data sets are comparable with estimates for the U.S., all 50 states, and 270 metropolitan areas across the U.S.

LABOR MARKET INFORMATION WEB LINKS

Civilian Labor Force - LAUS (Local Area Unemployment Statistics) –

Employment, Unemployment and Unemployment Insurance Rate

LA <http://www.voshost.com/altentry.asp?action=lmiguest>

Left menu: Historical Data Analysis – Employment and Wage Data – Labor Force Data – Labor Force Employment and Unemployment (LAUS)

States <http://data.bls.gov/cgi-bin/dsrv?la>

US <http://data.bls.gov/pdq/querytool.jsp?survey=ln>

Consumer Price Index (US) <http://data.bls.gov/cgi-bin/surveymost?cu>

Download Louisiana Workforce Commission’s Labor Market Information Products

LA http://www.laworks.net/Downloads/Downloads_LMI.asp

Employment and Wage Data – Quarterly Census of Employment and Wages (QCEW)

LA <http://www.voshost.com/altentry.asp?action=lmiguest>

Left menu: Historical Data Analysis – Employment and Wage Data – Industry Data – Quarterly Census of Employment and Wages (QCEW)

States & US <http://data.bls.gov/cgi-bin/dsrv?en>

NAICS (North American Industry Classification System) Codes Look-Up Table

<http://www.census.gov/eos/www/naics>

Nonfarm Employment, Hours and Earnings - CES (Current Employment Statistics)

LA <http://www.voshost.com/altentry.asp?action=lmiguest>

Left menu: Historical Data Analysis – Employment and Wage Data – Industry Data – Current Employment Statistics (CES) – select Show Earnings Data under table

States <http://data.bls.gov/cgi-bin/dsrv?sm>

US <http://data.bls.gov/cgi-bin/dsrv?ce>

Unemployment Insurance Claimants Data (by Occupation) - Unemployment Insurance (UI)

LA <http://www.voshost.com/altentry.asp?action=lmiguest>

Left menu: Historical Data Analysis – Employment and Wage Data – Labor Force Data – Unemployment Insurance Claimants

Unemployment Insurance Claims Data (by Region, Parish, Industry) - UI

LA http://www.laworks.net/LaborMarketInfo/LMI_UIClaimsReportMenu.asp

States & US <http://ows.doleta.gov/unemploy/claims.asp>

Unemployment Rates for all States - LAUS

States <http://www.bls.gov/web/laumstrk.htm>



Office of Occupational Information Services
Research & Statistics Division
Post Office Box 94094
Baton Rouge, LA 70804-9094

Data for: 2/2011



Workforce At A Glance is published monthly by the Louisiana Workforce Commission (LWC). The material in this publication is not copyrighted and may be reproduced; however, the LWC would appreciate credit for the material used and a copy of the reprint.

LMI Staff:

Patty Granier, Manager
Ramona Robichaux, Supervisor
Richard Pierce, Layout and Design
Benjamin Caldwell, Karen Clark, Jonathan Helis,
Tequila Perkins and Ronald Smith

Contributors:

Florence Gibson-Williams, Eula Sanders,
Natalie Foster-Lawrence, Mark Jones, Helen Hillard,
Tara Robinson, William F. Johnson, and Karen Clark

Contact Us:

Phone (225) 342-3141; Fax (225) 219-7759
Toll Free (888) 302-7662;
Email OOIS@ldol.state.la.us

Bobby Jindal, Governor
State of Louisiana

Curt Eysink, Executive Director
Louisiana Workforce Commission

Raj Jindal,
Information Technology Director

Visit our Web site:
www.laworks.net