

Louisiana Workforce

at a glance

Release Date: January 30, 2018

Data For: December 2017

<http://www.laworks.net>

In This Issue

- 2 **Economic Comparison**
- 3-4 **NSA State & Area Employment**
- 5-8 **Data Trends (Graphs)**
- 9-15 **Nonfarm Employment**
- 16-17 **Unemployment Rates & Civilian Labor Force**
- 18 **Average Hours & Earnings**
- 19 **Workforce Development Area Data**
- 20-21 **Glossary, Data Constraints, Downloads, & Web Links**

Louisiana's seasonally adjusted nonfarm employment was estimated at 1,974,500 for December 2017. The figure represents a decrease of 400 jobs over the month but an increase of 5,500 jobs over the year. Private sector employment was estimated at 1,656,400, an increase of 800 jobs over the month and a gain of 10,500 jobs over the year.

Over the month the largest gain was seen in the construction sector which added 1,300 jobs, its third over-the-month gain in the last four months. Manufacturing added 1,100 jobs from November, seen entirely in the non-durable goods subsector. Leisure and hospitality rose by 600 jobs after two straight months of losses. The accommodation and food services subsector rose by 500 jobs. Financial activities added 400 jobs from last month. Education and health services added 300 jobs over the month while other services showed a small increase of 100 jobs. The largest decline over the month occurred in the professional and business services sector which lost 1,300 jobs. Trade, transportation, and utilities lost 1,200 jobs from November, its third straight loss and eighth in the past nine months. The retail trade subsector declined by 1,700 jobs. The government sector also lost 1,200 jobs from last month. A gain of 500 jobs in the federal government subsector was lost to a 1,600 job decline in local government. Mining and logging saw 300 fewer jobs than in November, its third loss in the last four months. The information sector declined by 200 jobs, also its third loss in four months.

Over the year the largest gain was seen in the construction sector which added 10,100 jobs. Construction has seen over-the-year gains for 15 consecutive months. Leisure and hospitality showed 5,500 more jobs than last year as the accommodation and food services subsector added 3,700 jobs. It is the eighth consecutive over-the-year gain for leisure and hospitality. The education and health services sector rose by 3,100 jobs over the year, with the health care and social assistance subsector gaining 2,900 jobs. Education and health services has added jobs over the year every month beginning with October 2006. The professional and business services sector increased by 2,100 jobs and has seen over-the-year gains in nine of the last 11 months. Manufacturing increased by 1,400 jobs from last year as the non-durable goods subsector added 1,200 jobs. Mining and logging gained 800 jobs to show back to back over-the-year gains. Financial activities added 500 jobs from last December and the series hasn't lost jobs over the year since March. The other services sector showed no change over the month, ending a streak of 14 straight over-the-year increases. The largest decline over the year was seen in trade, transportation, and utilities lost which lost 11,000 jobs for its 26th straight over-the-year decrease. The retail trade subsector lost 9,100 jobs while the transportation, warehousing, and utilities subsector lost 3,900 jobs over the year. The government sector lost 5,000 jobs as local government lost 2,800 jobs and state government lost 2,400 jobs. Information showed 2,000 fewer jobs than last year, its 23rd consecutive month with an over-the-year loss.

The December 2017 preliminary seasonally adjusted unemployment rate for Louisiana decreased to 4.6 percent from the November 2017 rate of 4.7 percent. The national unemployment rate for December of 2017 remained at 4.1 percent, matching its November rate. Total unemployment in the state for December was 97,337. The state civilian labor force increased to 2,116,924, with an increase in total employment to 2,019,587.

Seasonally Adjusted	United States	Louisiana
Civilian Labor Force	DEC 2017	DEC 2017
Labor Force	160,597,000	2,116,924
Employed	154,021,000	2,019,587
Unemployed	6,576,000	97,337
Unemployment Rate	4.1	4.6
Nonfarm Wage and Salary Employment	DEC 2017	DEC 2017
Total Nonfarm	147,380,000	1,974,500
Mining and Logging	727,000	35,500
Construction	6,993,000	153,000
Manufacturing	12,539,000	134,300
Trade, Transportation, and Utilities	27,448,000	376,700
Information	2,722,000	21,600
Financial Activities	8,498,000	92,800
Professional and Business Services	20,943,000	213,400
Education and Health Services	23,309,000	316,200
Leisure and Hospitality	16,050,000	235,800
Other Services	5,810,000	77,100
Government	22,341,000	318,100

All Employees Average Hours & Earnings

(Not Seasonally Adjusted)

Construction	DEC 2017	DEC 2017	
	United States	Louisiana	
Average Weekly Earnings	\$ 1,151.70	\$ 1,078.53	
Average Weekly Hours	39.2	40.9	
Average Hourly Wages	\$ 29.38	\$ 26.37	
Manufacturing	Average Weekly Earnings	\$ 1,104.98	\$ 1,114.18
	Average Weekly Hours	41.2	42.3
	Average Hourly Wages	\$ 26.82	\$ 26.34

Louisiana Unemployment Insurance Activities

Claims	DEC 2017
Initial New & Renewals	7,947
Continued Weekly Intrastate Only	56,300
Insured Unemployment Rate	1.0

United States Consumer Price Index

	DEC 2017
All Urban Consumers	246.5



The civilian labor force and nonfarm **estimates** are prepared according to Bureau of Labor Statistics (BLS) methodology and are comparable with the U.S. and other states' data. For more information, go to page 20.

Economic Comparison

Seasonally Adjusted	United States			Louisiana		
Civilian Labor Force	DEC 2017	NOV 2017	DEC 2016	DEC 2017	NOV 2017	DEC 2016
Labor Force	160,597,000	160,533,000	159,736,000	2,116,924	2,098,549	2,100,414
Employed	154,021,000	153,917,000	152,233,000	2,019,587	2,000,391	1,974,499
Unemployed	6,576,000	6,616,000	7,502,000	97,337	98,158	125,915
Unemployment Rate	4.1	4.1	4.7	4.6	4.7	6.0
Nonfarm Wage and Salary Employment	DEC 2017	NOV 2017	DEC 2016	DEC 2017	NOV 2017	DEC 2016
Total Nonfarm	147,380,000	147,232,000	145,325,000	1,974,500	1,974,900	1,969,000
Mining and Logging	727,000	727,000	668,000	35,500	35,800	34,700
Construction	6,993,000	6,963,000	6,783,000	153,000	151,700	142,900
Manufacturing	12,539,000	12,514,000	12,343,000	134,300	133,200	132,900
Trade, Transportation, and Utilities	27,448,000	27,458,000	27,374,000	376,700	377,900	387,700
Information	2,722,000	2,715,000	2,762,000	21,600	21,800	23,600
Financial Activities	8,498,000	8,492,000	8,364,000	92,800	92,400	92,300
Professional and Business Services	20,943,000	20,924,000	20,416,000	213,400	214,700	211,300
Education and Health Services	23,309,000	23,281,000	22,871,000	316,200	315,900	313,100
Leisure and Hospitality	16,050,000	16,021,000	15,744,000	235,800	235,200	230,300
Other Services	5,810,000	5,798,000	5,701,000	77,100	77,000	77,100
Government	22,341,000	22,339,000	22,299,000	318,100	319,300	323,100
All Employees Average Hours & Earnings						
Construction	United States (Not Seasonally Adjusted)			Louisiana (Not Seasonally Adjusted)		
	DEC 2017	NOV 2017	DEC 2016	DEC 2017	NOV 2017	DEC 2016
Average Weekly Earnings	\$ 1,151.70	\$ 1,144.02	\$ 1,098.02	\$ 1,078.53	\$ 1,063.94	\$ 1,074.80
Average Weekly Hours	39.2	39.3	38.5	40.9	40.5	40.3
Average Hourly Wages	\$ 29.38	\$ 29.11	\$ 28.52	\$ 26.37	\$ 26.27	\$ 26.67
Manufacturing	United States (Not Seasonally Adjusted)			Louisiana (Not Seasonally Adjusted)		
	DEC 2017	NOV 2017	DEC 2016	DEC 2017	NOV 2017	DEC 2016
Average Weekly Earnings	\$ 1,104.98	\$ 1,095.73	\$ 1,081.17	\$ 1,114.18	\$ 1,117.15	\$ 1,077.76
Average Weekly Hours	41.2	41.1	41.0	42.3	43.1	42.1
Average Hourly Wages	\$ 26.82	\$ 26.66	\$ 26.37	\$ 26.34	\$ 25.92	\$ 25.60
Louisiana Unemployment Insurance Activities						
Claims				% Change From		
		DEC 2017	NOV 2017	DEC 2016	NOV 2017	DEC 2016
Initial New & Renewals		7,947	8,156	8,748	-2.6	-9.2
Continued Weekly Intrastate Only		56,300	48,240	70,164	16.7	-19.8
Insured Unemployment Rate*		1.0	1.0	1.3	1.0	-19.2
*Insured unemployment rate is for the week including the 12th of the month.						
United States Consumer Price Index (Not Seasonally Adjusted)						
	DEC 2017	% Change From:		NOV 2017	% Change From:	
	Index	Prior Month	Prior Year	Index	Prior Month	Prior Year
All Urban Consumers	246.5	-0.1	2.1	246.7	0.0	2.2

Not Seasonally Adjusted State and Area Employment

STATEWIDE

Louisiana's total nonfarm not seasonally adjusted employment was estimated at 1,989,900 for December 2017. The estimate represents a loss of 7,300 jobs over the month but an increase of 9,800 jobs from December 2016. The series has gained jobs over the year for eight consecutive months.

The total private employment figure was estimated at 1,667,200 in December 2017. Private sector employment showed an over-the-month decrease of 4,200 jobs but a gain of 14,500 jobs from December 2016. This series has added jobs over the year for eight straight months.

Over the month the largest increase was 700 jobs, seen in both the manufacturing sector and the trade, transportation, and utilities sector. The non-durable goods manufacturing subsector was responsible for all 700 jobs gained in manufacturing. Trade, transportation, and utilities has now seen three straight over-the-month gains as the transportation, warehousing, and utilities subsector added 900 jobs. Other services increased by 400 jobs, its fourth straight over-the-month gain for the month of December. Financial activities showed a slight gain of 100 jobs. The largest decline over the month was seen in the government sector which dropped 3,100 jobs. Local government declined by 2,600 jobs while state government lost 1,100 jobs. Government has lost jobs over the month in December every year with the exception of 1991. Professional and business services lost 2,000 jobs from November, its third straight over-the-month loss in the month of December. Construction lost 1,600 jobs over the month as the construction of buildings subsector declined by 900 jobs. It is the 11th straight over-the-month loss for construction for the month of December. Education and health services decreased by 900 jobs with the educational services subsector losing 500 jobs. Mining and logging showed 800 fewer jobs than last month and has lost jobs over the month in three of the last four months. Leisure and hospitality lost 600 jobs from last month, its fifth loss in six months. Information showed a small decline of 200 jobs.

The largest over-the-year gain was seen in the construction sector which added 10,800 jobs. This is its 12th consecutive month with an over-the-year gain, as heavy and civil engineering construction added 7,100 jobs. Construction of buildings also added 6,100 jobs. Leisure and hospitality added 6,900 jobs with the accommodation and food services subsector increasing by 4,900 jobs. Leisure and hospitality has seen over-the-year gains for seven consecutive months. Professional and business services added 3,900 jobs, its seventh increase in the last eight months. Education and health services added 3,300 jobs over the year and has added jobs over the year every month beginning with the October 2006 figure. Health care and social assistance was responsible for 3,100 of the 3,300 jobs gained, while education services rose by 200. Manufacturing gained 1,400 jobs from December 2016 as non-durable goods manufacturing gained 1,200 jobs. Manufacturing has added jobs over the year for three straight months. Mining and logging added 800 jobs from last year to show back to back over the year gains. Financial activities added 600 jobs from last year and has not lost jobs over the year since March. Other services increased by 200 jobs for its 11th straight over-the-year gain. The largest decline over the year was seen in the trade, transportation, and utilities sector, which declined by 11,400 jobs, its 27th straight over-the-year loss. The transportation, warehousing and utilities subsector lost 4,100 jobs while retail trade lost 9,300 jobs. Government lost 4,700 jobs with state government falling by 2,500. The government figure is the lowest for December in series history (beginning in 1990) and the 19th straight over-the-year loss. Information lost 2,000 jobs over the year, its 23rd straight over-the-year loss.

ALEXANDRIA

Total nonfarm employment for the Alexandria MSA was estimated at 62,900 for December 2017. This estimate shows no change over the month but a loss of 400 jobs over the year. The MSA has dropped jobs over the year for 17 consecutive months. Trade, transportation, and utilities lost 800 jobs over the year.

BATON ROUGE

Total nonfarm employment for the Baton Rouge MSA was estimated at 414,000 for December 2017. The estimate shows a loss of 2,000 jobs over the month but an increase of 9,500 jobs over the year. The over-the-year gain is the 12th in a row. Over the month trade, transportation, and utilities gained 300 jobs while construction lost 1,400 jobs. Over the year, construction added 4,100 jobs, education and health services added 3,000 jobs and leisure and hospitality added 2,200 jobs. Trade, transportation, and utilities dropped by 1,100 jobs, its 15th consecutive loss over the year.

HAMMOND

The Hammond MSA total nonfarm employment was estimated at 45,900 for December 2017. This figure shows a loss of 200 jobs over the month but a gain of 600 jobs over the year. Goods producing employment showed no change over the month or over the year. Service providing employment lost 200 jobs over the month but added 600 jobs over the year.

HOUMA

Total nonfarm employment in the Houma MSA was estimated at 85,800 for December 2017. This shows a loss of 300 jobs over the month and a decline of 1,200 jobs over the year. Trade, transportation, and utilities lost 2,600 jobs over the year. Construction added 300 jobs over the year.

LAFAYETTE

Total nonfarm employment for the Lafayette MSA was estimated at 199,300 for December 2017. This shows a loss of 1,300 jobs over the month and no change over the year. Over the month, construction lost 300 jobs. Over the year, manufacturing added 900 jobs while leisure and hospitality increased by 400. Mining and logging lost 100 jobs over the year for its 36th consecutive month with an over-the-year loss. Trade, transportation, and utilities lost 800 jobs from last year, with retail trade falling by 600 jobs.

LAKE CHARLES

Total nonfarm employment for the Lake Charles MSA was estimated at 115,600 for December 2017. This shows a loss of 1,400 jobs over the month but a gain of 4,700 jobs over the year. It is the 78th consecutive month with an over-the-year increase. The construction sector showed a loss of 900 jobs over the month but added 3,500 jobs over the year. This is construction's 27th consecutive month with an over-the-year increase. Both the professional and business services sector and the leisure and hospitality sector added 300 jobs over the year.

MONROE

Total nonfarm employment for the Monroe MSA was estimated at 80,300 for December 2017. This shows a loss of 200 jobs over the month but a gain of 400 jobs over the year. Over the year, government lost 500 jobs with state government losing 400 jobs, while trade, transportation, and utilities lost 300 jobs.

NEW ORLEANS

Total nonfarm employment for the New Orleans MSA was estimated at 578,200 for December 2017. This shows a loss of 500 jobs over the month and a loss of 2,200 jobs over the year. Over the month, trade, transportation, and utilities added 1,300 jobs while education and health services lost 1,400 jobs. Over the year, construction increased by 1,900 jobs, professional and business services added 1,700 jobs, leisure and hospitality added 1,300 jobs, while manufacturing added 1,000 jobs. Government lost 2,400 jobs over the year as local government showed 2,200 fewer jobs than last year. Trade, transportation, and utilities declined by 2,800 jobs from last year while education and health services lost 1,500 jobs over the year.

SHREVEPORT

Total nonfarm employment for the Shreveport MSA was estimated at 178,700 for December 2017. This shows a gain of 100 jobs over the month but a loss of 2,200 jobs over the year. This is the 32nd consecutive month with an over-the-year loss. Over the month professional and business services added 300 jobs. Over the year government declined by 1,200 jobs and mining and logging lost 600 jobs.

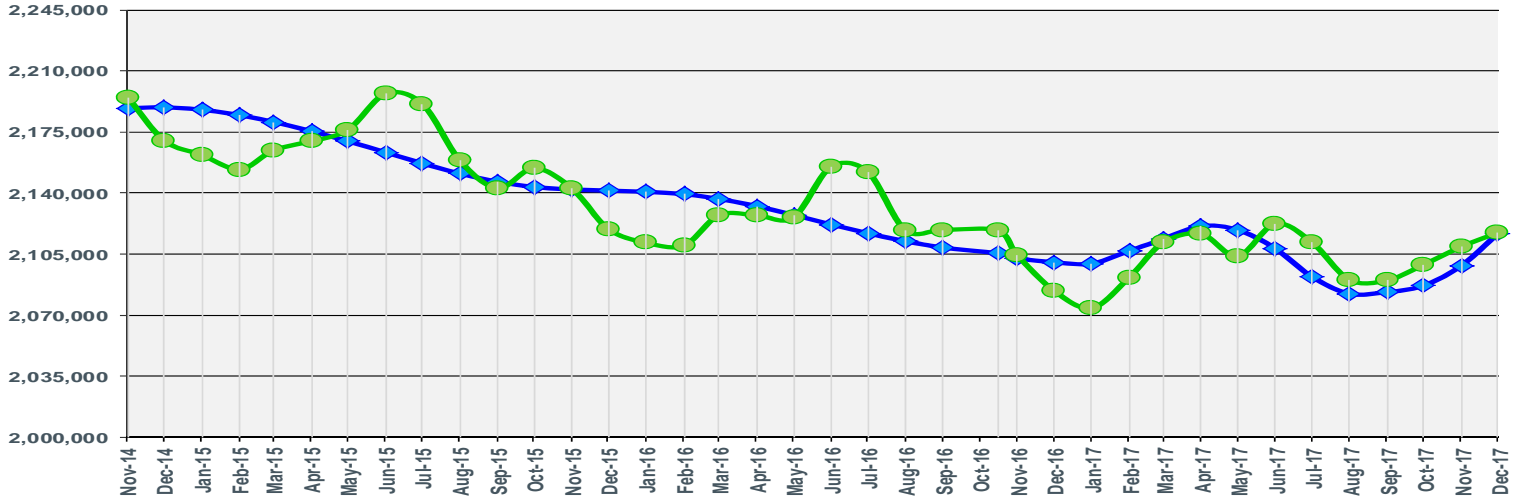
December 2017

Seasonally Adjusted
 2,116,924
 Over the Month: 18,375
 Over the Year: 16,510

Louisiana Civilian Labor Force

Seasonally Adjusted Not Seasonally Adjusted

Not Seasonally Adjusted
 2,117,381
 Over the Month: 8,039
 Over the Year: 33,169



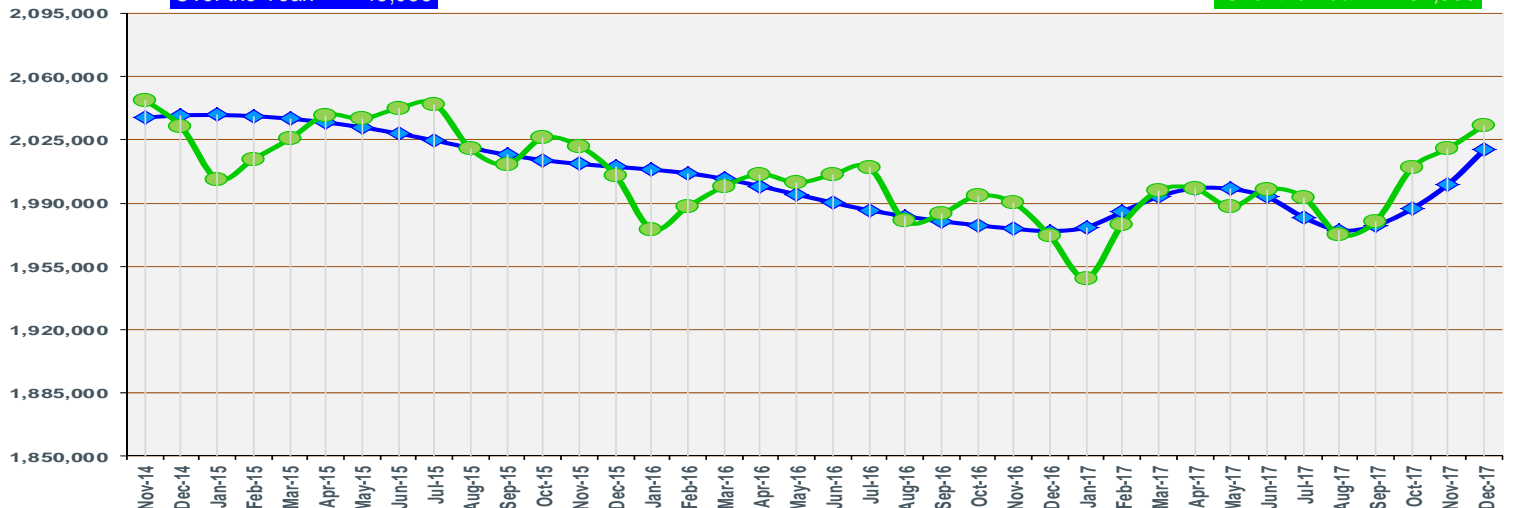
December 2017

Seasonally Adjusted
 2,019,587
 Over the Month: 19,196
 Over the Year: 45,088

Louisiana Civilian Labor Force Employment

Seasonally Adjusted Not Seasonally Adjusted

Not Seasonally Adjusted
 2,033,106
 Over the Month: 12,770
 Over the Year: 61,330



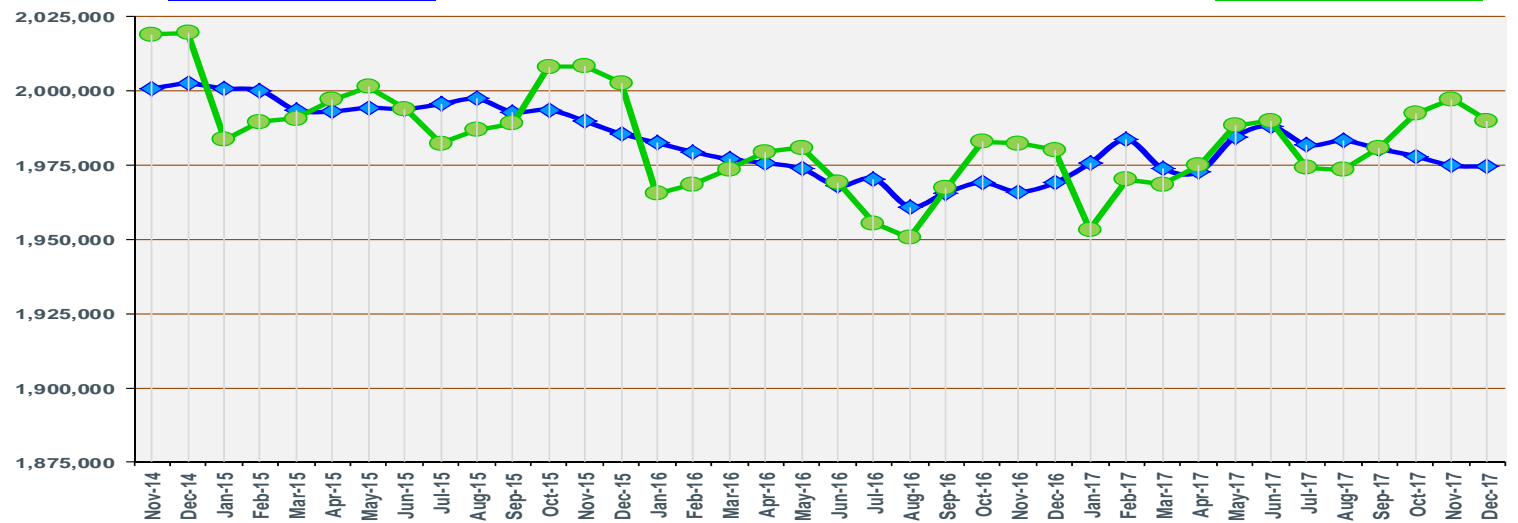
December 2017

Seasonally Adjusted
 1,974,500
 Over the Month: -400
 Over the Year: 5,500

Louisiana Nonfarm Employment

Seasonally Adjusted Not Seasonally Adjusted

Not Seasonally Adjusted
 1,989,900
 Over the Month: -7,300
 Over the Year: 9,800

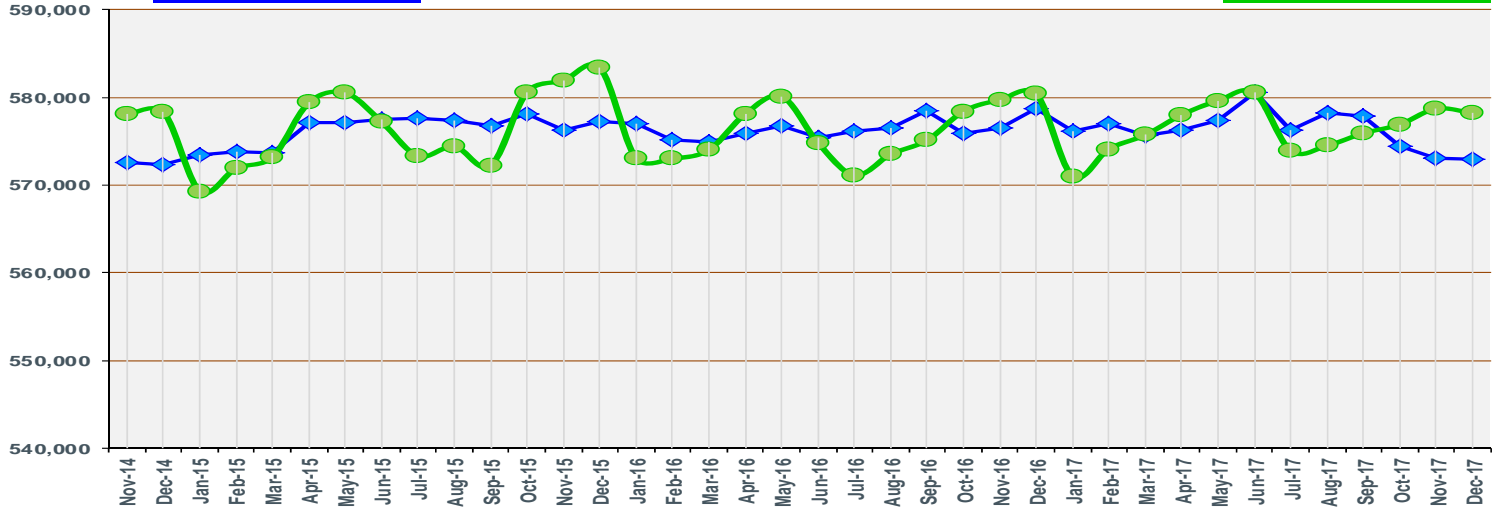


December 2017

Seasonally Adjusted
 572,900
 Over the Month: -200
 Over the Year: -5,800

New Orleans MSA Nonfarm Employment

Not Seasonally Adjusted
 578,200
 Over the Month: -500
 Over the Year: -2,200

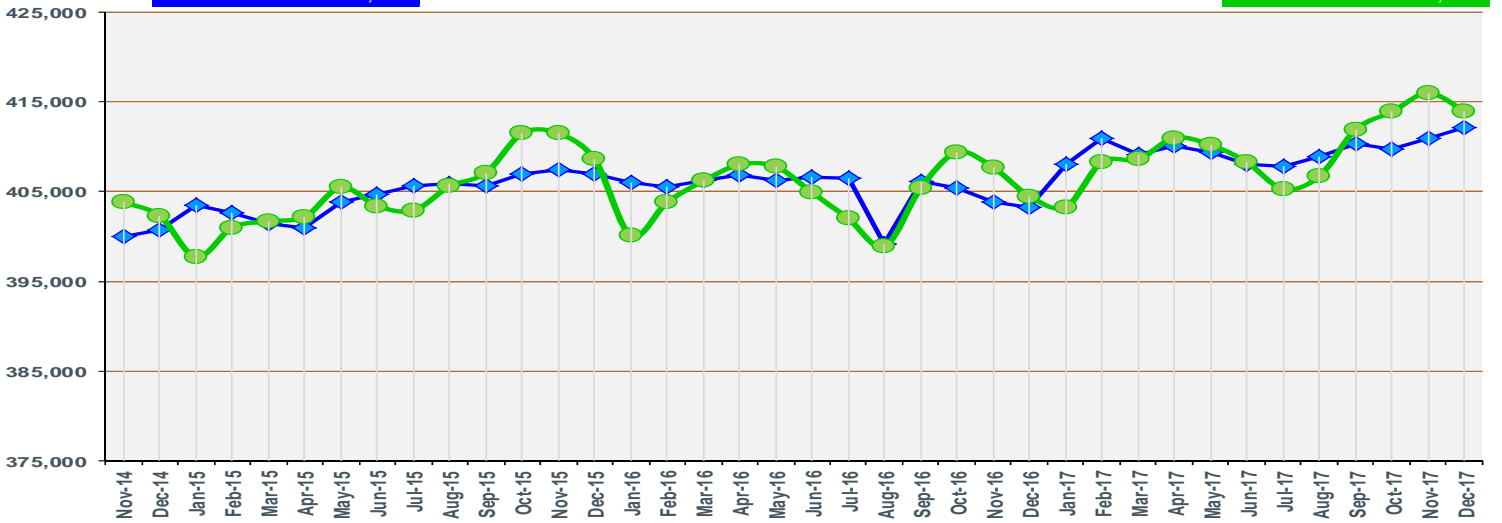
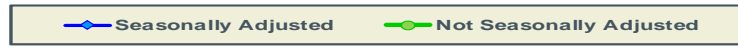


December 2017

Seasonally Adjusted
 412,200
 Over the Month: 1,300
 Over the Year: 9,000

Baton Rouge MSA Nonfarm Employment

Not Seasonally Adjusted
 414,000
 Over the Month: -2,000
 Over the Year: 9,500

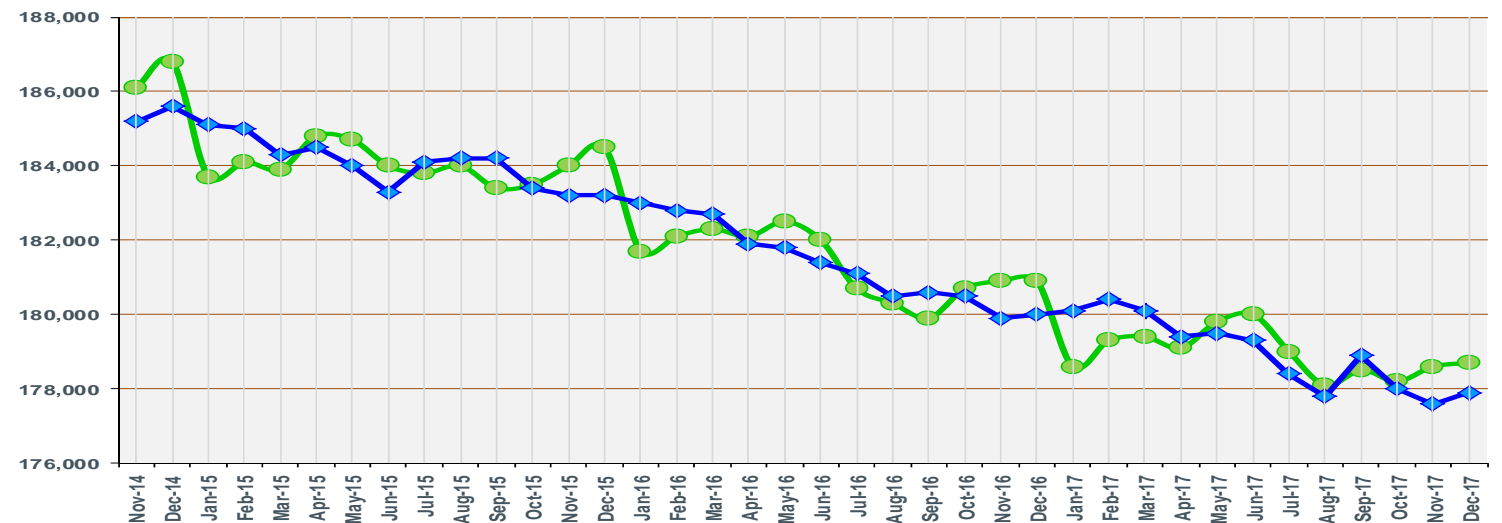
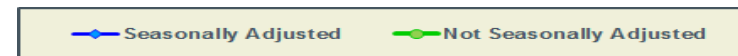


December 2017

Seasonally Adjusted
 177,900
 Over the Month: 300
 Over the Year: -2,100

Shreveport MSA Nonfarm Employment

Not Seasonally Adjusted
 178,700
 Over the Month: 100
 Over the Year: -2,200



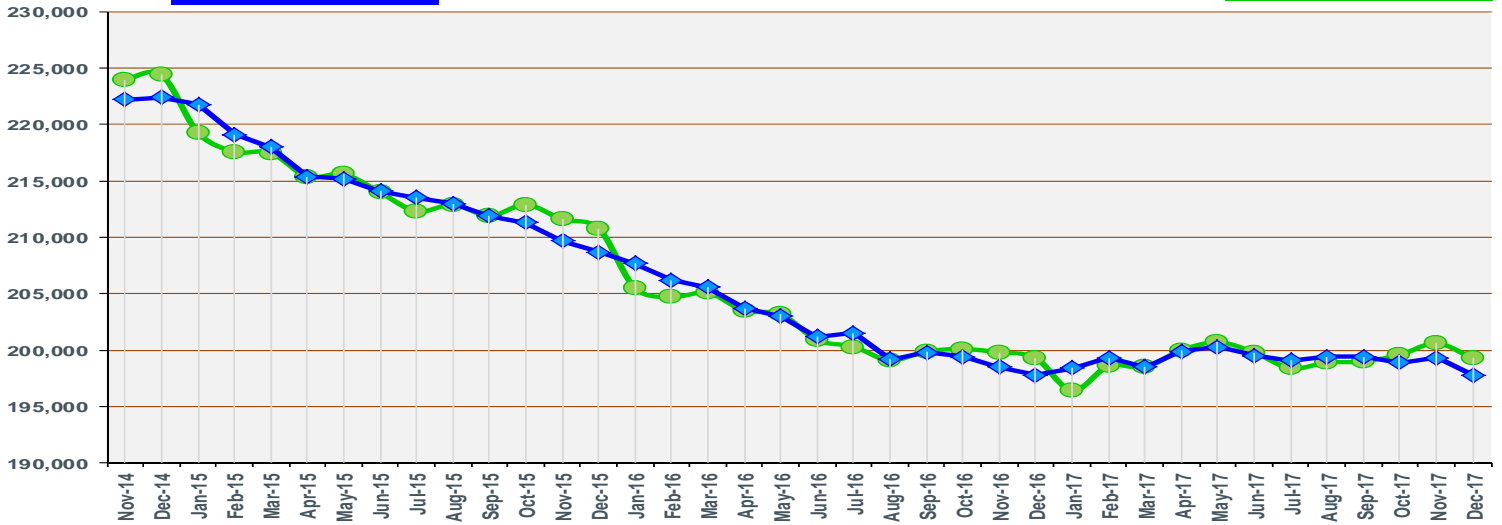
December
2017

Seasonally Adjusted
197,800
Over the Month: -1,500
Over the Year: 0

Lafayette MSA Nonfarm Employment

Seasonally Adjusted Not Seasonally Adjusted

Not Seasonally Adjusted
199,300
Over the Month: -1,300
Over the Year: 0



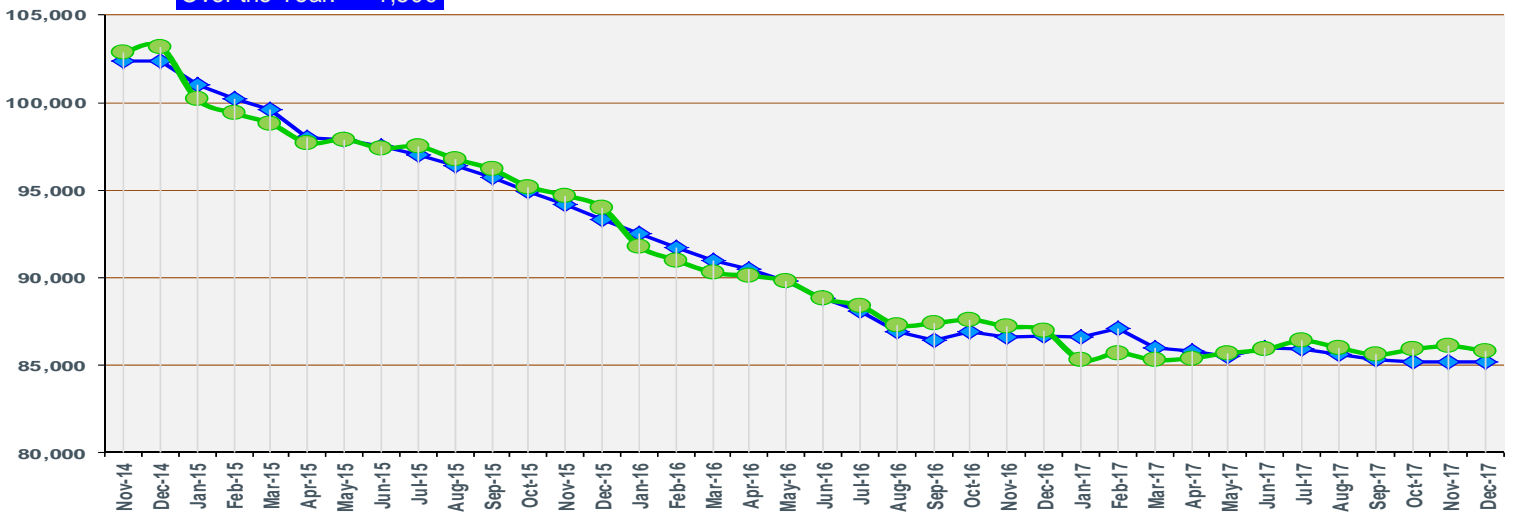
December
2017

Seasonally Adjusted
85,200
Over the Month: 0
Over the Year: -1,500

Houma MSA Nonfarm Employment

Seasonally Adjusted Not Seasonally Adjusted

Not Seasonally Adjusted
85,800
Over the Month: -300
Over the Year: -1,200



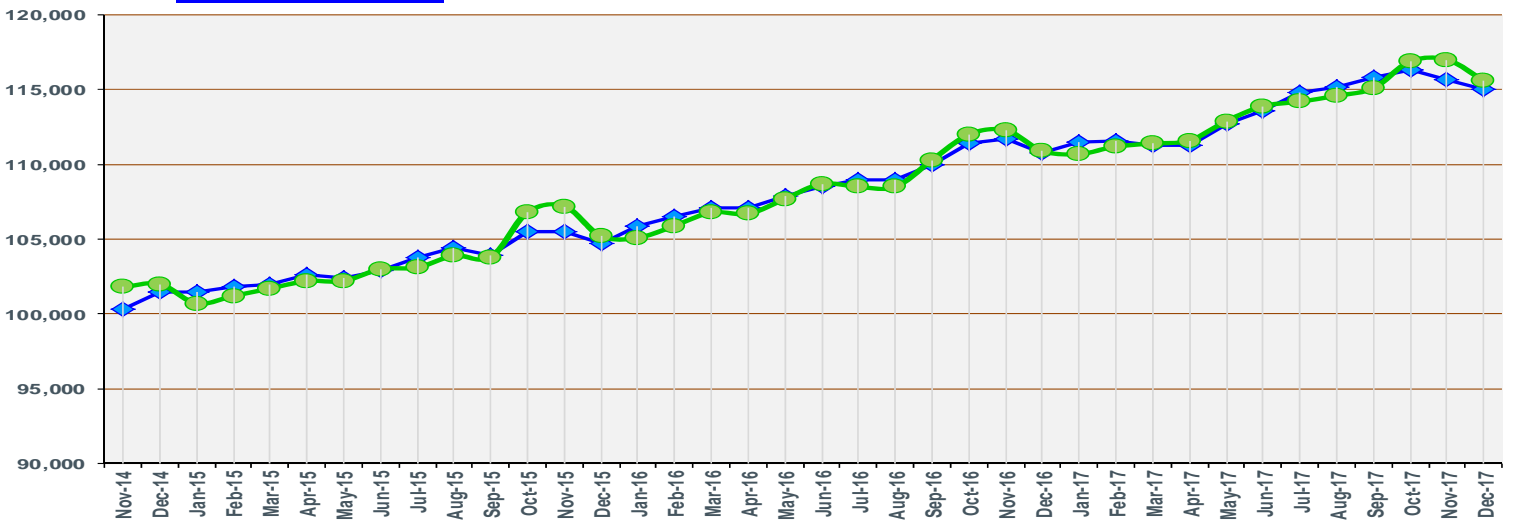
December
2017

Seasonally Adjusted
115,000
Over the Month: -700
Over the Year: 4,200

Lake Charles MSA Nonfarm Employment

Seasonally Adjusted Not Seasonally Adjusted

Not Seasonally Adjusted
115,600
Over the Month: -1,400
Over the Year: 4,700



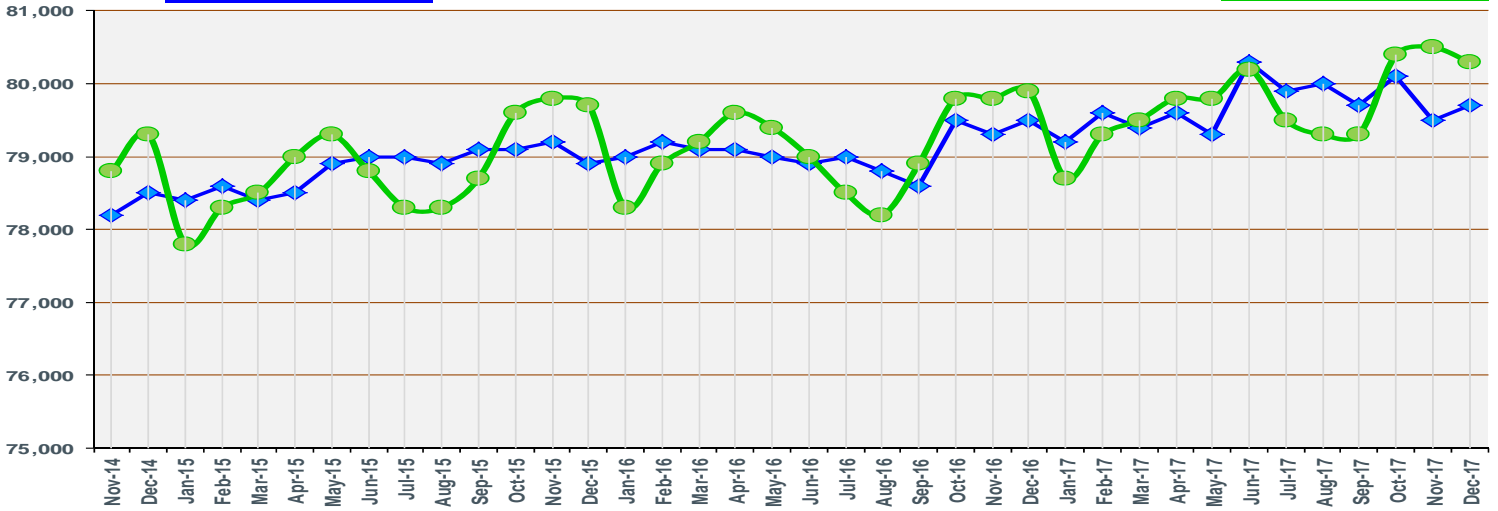
December 2017

Seasonally Adjusted
 79,700
 Over the Month: 200
 Over the Year: 200

Monroe MSA Nonfarm Employment

Not Seasonally Adjusted
 80,300
 Over the Month: -200
 Over the Year: 400

Seasonally Adjusted Not Seasonally Adjusted



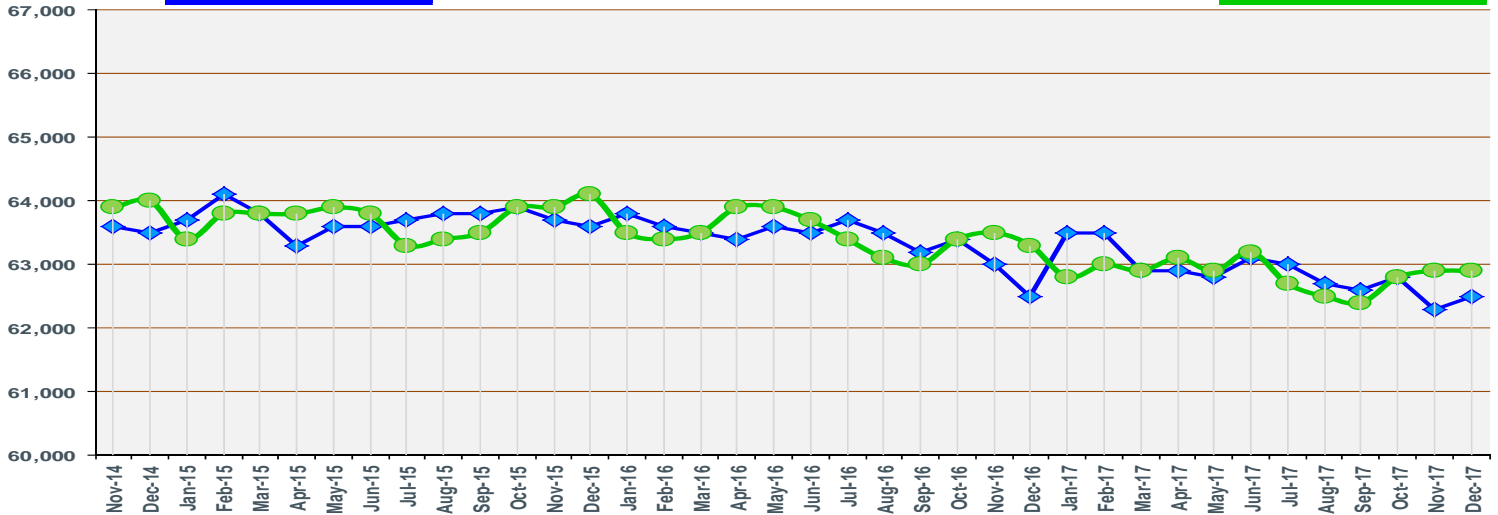
December 2017

Seasonally Adjusted
 62,500
 Over the Month: 200
 Over the Year: 0

Alexandria MSA Nonfarm Employment

Not Seasonally Adjusted
 62,900
 Over the Month: 0
 Over the Year: -400

Seasonally Adjusted Not Seasonally Adjusted



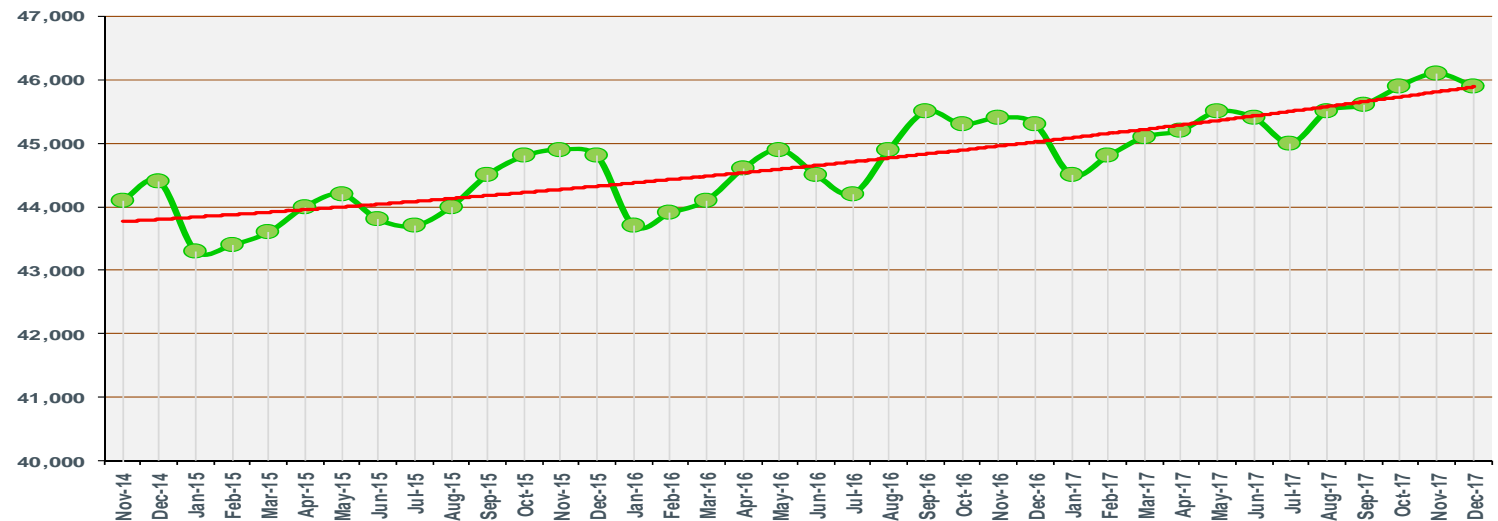
December 2017

The Bureau of Labor Statistics is not currently publishing Seasonally Adjusted for this MSA.

Hammond MSA Nonfarm Employment

Not Seasonally Adjusted
 45,900
 Over the Month: -200
 Over the Year: 600

Not Seasonally Adjusted 3 Year Trend



<i>Louisiana - Seasonally Adjusted</i>	Prel.	Rev.		OTM	OTM	OTY	OTY
	Dec 2017	Nov 2017	Dec 2016	Change	% Change	Change	% Change
Total Nonfarm	1,974,500	1,974,900	1,969,000	-400	-0.02%	5,500	0.28%
Total Private	1,656,400	1,655,600	1,645,900	800	0.05%	10,500	0.64%
Goods-Producing	322,800	320,700	310,500	2,100	0.65%	12,300	3.96%
Mining and Logging	35,500	35,800	34,700	-300	-0.84%	800	2.31%
Mining, Logging, and Construction	188,500	187,500	177,600	1,000	0.53%	10,900	6.14%
Construction	153,000	151,700	142,900	1,300	0.86%	10,100	7.07%
Manufacturing	134,300	133,200	132,900	1,100	0.83%	1,400	1.05%
Durable Goods	61,800	61,800	61,600	0	0.00%	200	0.32%
Nondurable Goods	72,500	71,400	71,300	1,100	1.54%	1,200	1.68%
Service-Providing	1,651,700	1,654,200	1,658,500	-2,500	-0.15%	-6,800	-0.41%
Private Service-Providing	1,333,600	1,334,900	1,335,400	-1,300	-0.10%	-1,800	-0.13%
Trade, Transportation, and Utilities	376,700	377,900	387,700	-1,200	-0.32%	-11,000	-2.84%
Wholesale Trade	71,800	71,600	69,800	200	0.28%	2,000	2.87%
Retail Trade	226,100	227,800	235,200	-1,700	-0.75%	-9,100	-3.87%
Transportation, Warehousing, and Utilities	78,800	78,500	82,700	300	0.38%	-3,900	-4.72%
Information	21,600	21,800	23,600	-200	-0.92%	-2,000	-8.47%
Financial Activities	92,800	92,400	92,300	400	0.43%	500	0.54%
Real Estate and Rental and Leasing	30,300	30,000	29,600	300	1.00%	700	2.36%
Professional and Business Services	213,400	214,700	211,300	-1,300	-0.61%	2,100	0.99%
Professional, Scientific, and Technical Services	83,800	83,800	84,200	0	0.00%	-400	-0.48%
Management of Companies and Enterprises	22,700	22,500	22,800	200	0.89%	-100	-0.44%
Admin. and Support and Waste Mgmt. and Remediation Serv.	106,900	108,400	104,300	-1,500	-1.38%	2,600	2.49%
Education and Health Services	316,200	315,900	313,100	300	0.09%	3,100	0.99%
Educational Services	47,400	47,300	47,200	100	0.21%	200	0.42%
Health Care and Social Assistance	268,800	268,600	265,900	200	0.07%	2,900	1.09%
Leisure and Hospitality	235,800	235,200	230,300	600	0.26%	5,500	2.39%
Arts, Entertainment, and Recreation	30,600	30,500	28,800	100	0.33%	1,800	6.25%
Accommodation and Food Services	205,200	204,700	201,500	500	0.24%	3,700	1.84%
Other Services	77,100	77,000	77,100	100	0.13%	0	0.00%
Government	318,100	319,300	323,100	-1,200	-0.38%	-5,000	-1.55%
Federal Government	32,200	31,700	32,000	500	1.58%	200	0.63%
State Government	84,100	84,200	86,500	-100	-0.12%	-2,400	-2.77%
Local Government	201,800	203,400	204,600	-1,600	-0.79%	-2,800	-1.37%
<i>MSAs - Seasonally Adjusted</i>	Prel. Dec 2017	Rev. Nov 2017	Dec 2016	OTM Change	OTM % Change	OTY Change	OTY % Change
Alexandria Total Nonfarm	62,500	62,300	62,500	200	0.32%	0	0.00%
Baton Rouge Total Nonfarm	412,200	410,900	403,200	1,300	0.32%	9,000	2.23%
Houma Total Nonfarm	85,200	85,200	86,700	0	0.00%	-1,500	-1.73%
Lafayette Total Nonfarm	197,800	199,300	197,800	-1,500	-0.75%	0	0.00%
Lake Charles Total Nonfarm	115,000	115,700	110,800	-700	-0.61%	4,200	3.79%
Monroe Total Nonfarm	79,700	79,500	79,500	200	0.25%	200	0.25%
New Orleans Total Nonfarm	572,900	573,100	578,700	-200	-0.03%	-5,800	-1.00%
Shreveport Total Nonfarm	177,900	177,600	180,000	300	0.17%	-2,100	-1.17%

<i>Louisiana - Not Seasonally Adjusted</i>	Prel.	Rev.		OTM	OTM	OTY	OTY
	Dec	Nov	Dec	Change	%	Change	%
	2017	2017	2016		Change		Change
Total Nonfarm	1,989,900	1,997,200	1,980,100	-7,300	-0.37%	9,800	0.49%
Total Private	1,667,200	1,671,400	1,652,700	-4,200	-0.25%	14,500	0.88%
Goods-Producing	324,000	325,700	311,000	-1,700	-0.52%	13,000	4.18%
Mining & Logging	35,600	36,400	34,800	-800	-2.20%	800	2.30%
Oil & Gas Extraction	7,700	7,700	7,700	0	0.00%	0	0.00%
Crude Petroleum & Natural Gas Extraction	5,900	5,800	6,800	100	1.72%	-900	-13.24%
Support Activities for Mining	23,900	24,400	24,100	-500	-2.05%	-200	-0.83%
Drilling Oil & Gas Wells	2,800	2,700	2,800	100	3.70%	0	0.00%
Mining, Logging, & Construction	189,100	191,500	177,500	-2,400	-1.25%	11,600	6.54%
Construction	153,500	155,100	142,700	-1,600	-1.03%	10,800	7.57%
Construction of Buildings	38,800	39,700	32,700	-900	-2.27%	6,100	18.65%
Residential Building Construction	5,700	5,600	5,600	100	1.79%	100	1.79%
Nonresidential Building Construction	33,100	34,100	27,100	-1,000	-2.93%	6,000	22.14%
Heavy & Civil Engineering Construction	51,200	51,800	44,100	-600	-1.16%	7,100	16.10%
Specialty Trade Contractors	63,500	63,600	65,900	-100	-0.16%	-2,400	-3.64%
Manufacturing	134,900	134,200	133,500	700	0.52%	1,400	1.05%
Durable Goods	61,400	61,400	61,200	0	0.00%	200	0.33%
Transportation Equipment Manufacturing	8,500	8,600	9,500	-100	-1.16%	-1,000	-10.53%
Ship & Boat Building	5,900	6,100	6,000	-200	-3.28%	-100	-1.67%
Nondurable Goods	73,500	72,800	72,300	700	0.96%	1,200	1.66%
Food Manufacturing	16,100	16,200	16,300	-100	-0.62%	-200	-1.23%
Paper Manufacturing	6,800	6,800	7,000	0	0.00%	-200	-2.86%
Petroleum & Coal Products Manufacturing	11,800	11,800	11,900	0	0.00%	-100	-0.84%
Chemical Manufacturing	25,700	25,700	25,500	0	0.00%	200	0.78%
Basic Chemical Manufacturing	13,900	13,900	13,700	0	0.00%	200	1.46%
Service-Providing	1,665,900	1,671,500	1,669,100	-5,600	-0.34%	-3,200	-0.19%
Private Service-Providing	1,343,200	1,345,700	1,341,700	-2,500	-0.19%	1,500	0.11%
Trade, Transportation, & Utilities	384,500	383,800	395,900	700	0.18%	-11,400	-2.88%
Wholesale Trade	72,300	72,000	70,300	300	0.42%	2,000	2.84%
Merchant Wholesalers, Durable Goods	38,200	37,300	37,100	900	2.41%	1,100	2.96%
Merchant Wholesalers, Nondurable Goods	25,000	25,100	25,200	-100	-0.40%	-200	-0.79%
Retail Trade	232,400	232,900	241,700	-500	-0.21%	-9,300	-3.85%
Motor Vehicle & Parts Dealers	29,900	29,900	29,500	0	0.00%	400	1.36%
Building Material & Garden Equipment & Supplies Dealers	20,300	20,200	20,300	100	0.50%	0	0.00%
Food & Beverage Stores	40,400	40,200	40,200	200	0.50%	200	0.50%
Grocery Stores	35,800	35,700	35,400	100	0.28%	400	1.13%
Health & Personal Care Stores	17,600	17,400	17,800	200	1.15%	-200	-1.12%
Gasoline Stations	20,100	20,100	20,000	0	0.00%	100	0.50%
Clothing and Clothing Accessories Stores	19,900	19,000	20,200	900	4.74%	-300	-1.49%
General Merchandise Stores	58,600	59,200	61,400	-600	-1.01%	-2,800	-4.56%
Department Stores	11,600	11,300	12,200	300	2.65%	-600	-4.92%
Transportation, Warehousing, & Utilities	79,800	78,900	83,900	900	1.14%	-4,100	-4.89%
Transportation and Warehousing	71,000	70,300	75,200	700	1.00%	-4,200	-5.59%
Truck Transportation	16,700	16,800	16,800	-100	-0.60%	-100	-0.60%
Support Activities for Transportation	18,400	18,300	19,000	100	0.55%	-600	-3.16%

<i>Louisiana - Not Seasonally Adjusted</i>	Prel.	Rev.		OTM	OTM	OTY	OTY
	Dec	Nov	Dec	Change	%	Change	%
	2017	2017	2016		Change		Change
Information	21,400	21,600	23,400	-200	-0.93%	-2,000	-8.55%
Telecommunications	8,500	8,500	9,100	0	0.00%	-600	-6.59%
Financial Activities	92,700	92,600	92,100	100	0.11%	600	0.65%
Finance & Insurance	62,200	62,200	62,500	0	0.00%	-300	-0.48%
Credit Intermediation & Related Activities	30,300	30,300	30,300	0	0.00%	0	0.00%
Depository Credit Intermediation	21,300	21,300	21,200	0	0.00%	100	0.47%
Insurance Carriers & Related Activities	28,600	28,600	28,300	0	0.00%	300	1.06%
Real Estate & Rental & Leasing	30,500	30,400	29,600	100	0.33%	900	3.04%
Professional & Business Services	215,500	217,500	211,600	-2,000	-0.92%	3,900	1.84%
Professional, Scientific, & Technical Services	84,700	85,000	84,400	-300	-0.35%	300	0.36%
Legal Services	17,700	18,000	18,500	-300	-1.67%	-800	-4.32%
Accounting, Tax Preparation, Bookkeeping & Payroll Services	11,000	10,800	11,600	200	1.85%	-600	-5.17%
Architectural, Engineering, & Related Services	23,700	23,800	23,100	-100	-0.42%	600	2.60%
Management of Companies & Enterprises	22,900	22,700	23,000	200	0.88%	-100	-0.43%
Admin. & Support & Waste Mgmt. & Remediation Serv.	107,900	109,800	104,200	-1,900	-1.73%	3,700	3.55%
Administrative & Support Services	98,400	100,100	94,100	-1,700	-1.70%	4,300	4.57%
Employment Services	35,900	36,600	33,700	-700	-1.91%	2,200	6.53%
Services to Buildings & Dwellings	24,000	24,600	22,600	-600	-2.44%	1,400	6.19%
Education & Health Services	317,600	318,500	314,300	-900	-0.28%	3,300	1.05%
Educational Services	48,600	49,100	48,400	-500	-1.02%	200	0.41%
Colleges, Universities, & Professional Schools	14,000	14,600	14,200	-600	-4.11%	-200	-1.41%
Health Care & Social Assistance	269,000	269,400	265,900	-400	-0.15%	3,100	1.17%
Ambulatory Health Care Services	102,100	101,800	100,100	300	0.29%	2,000	2.00%
Offices of Physicians	41,200	40,900	39,800	300	0.73%	1,400	3.52%
Home Health Care Services	20,600	20,700	21,000	-100	-0.48%	-400	-1.90%
Hospitals	80,500	80,500	78,500	0	0.00%	2,000	2.55%
Nursing & Residential Care Facilities	43,900	44,600	42,800	-700	-1.57%	1,100	2.57%
Nursing Care Facilities	26,300	27,000	26,600	-700	-2.59%	-300	-1.13%
Social Assistance	42,500	42,500	44,500	0	0.00%	-2,000	-4.49%
Leisure & Hospitality	234,700	235,300	227,800	-600	-0.25%	6,900	3.03%
Arts, Entertainment, & Recreation	29,900	30,200	27,900	-300	-0.99%	2,000	7.17%
Amusement, Gambling, & Recreation Industries	21,800	22,400	21,300	-600	-2.68%	500	2.35%
Gambling Industries	9,900	9,800	9,700	100	1.02%	200	2.06%
Accommodation & Food Services	204,800	205,100	199,900	-300	-0.15%	4,900	2.45%
Accommodation	34,700	34,700	33,500	0	0.00%	1,200	3.58%
Food Services & Drinking Places	170,100	170,400	166,400	-300	-0.18%	3,700	2.22%
Other Services	76,800	76,400	76,600	400	0.52%	200	0.26%
Repair & Maintenance	19,200	19,000	19,100	200	1.05%	100	0.52%
Automotive Repair & Maintenance	10,900	10,900	11,100	0	0.00%	-200	-1.80%
Personal & Laundry Services	17,300	17,200	17,200	100	0.58%	100	0.58%
Government	322,700	325,800	327,400	-3,100	-0.95%	-4,700	-1.44%
Federal Government	32,300	31,700	32,100	600	1.89%	200	0.62%
State Government	87,300	88,400	89,800	-1,100	-1.24%	-2,500	-2.78%
Local Government	203,100	205,700	205,500	-2,600	-1.26%	-2,400	-1.17%

LOUISIANA & MSAs NONFARM EMPLOYMENT

12

<i>New Orleans-Metairie MSA - Not Seasonally Adjusted</i>	Prel. Dec 2017	Rev. Nov 2017	Dec 2016	OTM Change	OTM % Change	OTY Change	OTY % Change
Total Nonfarm	578,200	578,700	580,400	-500	-0.09%	-2,200	-0.38%
Total Private	510,800	511,200	510,600	-400	-0.08%	200	0.04%
Goods-Producing	68,300	67,200	65,500	1,100	1.64%	2,800	4.27%
Mining & Logging	5,100	5,200	5,200	-100	-1.92%	-100	-1.92%
Mining, Logging, & Construction	37,200	36,400	35,400	800	2.20%	1,800	5.08%
Construction	32,100	31,200	30,200	900	2.88%	1,900	6.29%
Heavy & Civil Engineering Construction	7,000	7,100	6,600	-100	-1.41%	400	6.06%
Specialty Trade Contractors	15,500	15,100	16,300	400	2.65%	-800	-4.91%
Manufacturing	31,100	30,800	30,100	300	0.97%	1,000	3.32%
Durable Goods	11,300	11,200	11,400	100	0.89%	-100	-0.88%
Transportation Equipment Manufacturing	2,200	2,200	2,400	0	0.00%	-200	-8.33%
Ship & Boat Building	1,300	1,300	1,300	0	0.00%	0	0.00%
Nondurable Goods	19,800	19,600	18,700	200	1.02%	1,100	5.88%
Chemical Manufacturing	5,600	5,600	5,200	0	0.00%	400	7.69%
Service-Providing	509,900	511,500	514,900	-1,600	-0.31%	-5,000	-0.97%
Private Service-Providing	442,500	444,000	445,100	-1,500	-0.34%	-2,600	-0.58%
Trade, Transportation, & Utilities	117,300	116,000	120,100	1,300	1.12%	-2,800	-2.33%
Wholesale Trade	22,800	22,700	23,700	100	0.44%	-900	-3.80%
Merchant Wholesalers, Durable Goods	10,700	10,500	10,500	200	1.90%	200	1.90%
Merchant Wholesalers, Nondurable Goods	8,600	8,600	8,700	0	0.00%	-100	-1.15%
Retail Trade	65,300	64,700	67,700	600	0.93%	-2,400	-3.55%
Grocery Stores	10,700	10,600	10,400	100	0.94%	300	2.88%
General Merchandise Stores	15,200	15,400	15,900	-200	-1.30%	-700	-4.40%
Transportation, Warehousing, & Utilities	29,200	28,600	28,700	600	2.10%	500	1.74%
Information	6,400	6,400	7,100	0	0.00%	-700	-9.86%
Financial Activities	29,500	29,600	30,500	-100	-0.34%	-1,000	-3.28%
Finance & Insurance	22,000	21,900	21,800	100	0.46%	200	0.92%
Credit Intermediation & Related Activities	8,100	8,100	8,100	0	0.00%	0	0.00%
Depository Credit Intermediation	6,000	6,000	6,000	0	0.00%	0	0.00%
Professional & Business Services	77,100	77,800	75,400	-700	-0.90%	1,700	2.25%
Professional, Scientific, & Technical Services	31,900	31,900	31,100	0	0.00%	800	2.57%
Legal Services	8,200	8,300	8,300	-100	-1.20%	-100	-1.20%
Management of Companies & Enterprises	7,800	7,700	7,800	100	1.30%	0	0.00%
Admin. & Support & Waste Mgmt. & Remediation Serv.	37,400	38,200	36,500	-800	-2.09%	900	2.47%
Administrative & Support Services	35,000	35,800	33,800	-800	-2.23%	1,200	3.55%
Employment Services	13,200	13,300	12,600	-100	-0.75%	600	4.76%
Education & Health Services	100,400	101,800	101,900	-1,400	-1.38%	-1,500	-1.47%
Educational Services	31,200	31,600	31,300	-400	-1.27%	-100	-0.32%
Colleges, Universities, & Professional Schools	12,300	12,700	12,300	-400	-3.15%	0	0.00%
Health Care & Social Assistance	69,200	70,200	70,600	-1,000	-1.42%	-1,400	-1.98%
Ambulatory Health Care Services	27,200	27,100	26,700	100	0.37%	500	1.87%
Hospitals	26,100	26,100	24,900	0	0.00%	1,200	4.82%
Leisure & Hospitality	87,200	87,900	85,900	-700	-0.80%	1,300	1.51%
Arts, Entertainment, & Recreation	12,400	12,500	11,300	-100	-0.80%	1,100	9.73%
Amusement, Gambling, & Recreation Industries	5,900	6,000	5,800	-100	-1.67%	100	1.72%
Gambling Industries	1,700	1,700	1,700	0	0.00%	0	0.00%
Accommodation & Food Services	74,800	75,400	74,600	-600	-0.80%	200	0.27%
Accommodation	15,000	15,000	14,500	0	0.00%	500	3.45%
Food Services & Drinking Places	59,800	60,400	60,100	-600	-0.99%	-300	-0.50%
Other Services	24,600	24,500	24,200	100	0.41%	400	1.65%
Government	67,400	67,500	69,800	-100	-0.15%	-2,400	-3.44%
Federal Government	13,300	12,900	12,700	400	3.10%	600	4.72%
State Government	11,600	11,700	12,400	-100	-0.85%	-800	-6.45%
Local Government	42,500	42,900	44,700	-400	-0.93%	-2,200	-4.92%
<i>Hammond MSA - Not Seasonally Adjusted</i>	Prel. Dec 2017	Rev. Nov 2017	Dec 2016	OTM Change	OTM % Change	OTY Change	OTY % Change
Total Nonfarm	45,900	46,100	45,300	-200	-0.43%	600	1.32%
Total Private	34,400	34,500	33,900	-100	-0.29%	500	1.47%
Goods-Producing	3,400	3,400	3,400	0	0.00%	0	0.00%
Service-Providing	42,500	42,700	41,900	-200	-0.47%	600	1.43%
Private Service-Providing	31,000	31,100	30,500	-100	-0.32%	500	1.64%
Government	11,500	11,600	11,400	-100	-0.86%	100	0.88%

<i>Baton Rouge MSA - Not Seasonally Adjusted</i>	Prel.	Rev.		OTM	OTM	OTY	OTY
	Dec 2017	Nov 2017	Dec 2016	Change	% Change	Change	% Change
Total Nonfarm	414,000	416,000	404,500	-2,000	-0.48%	9,500	2.35%
Total Private	340,800	342,500	331,300	-1,700	-0.50%	9,500	2.87%
Goods-Producing	83,100	84,500	78,800	-1,400	-1.66%	4,300	5.46%
Mining & Logging	1,000	1,000	1,000	0	0.00%	0	0.00%
Mining, Logging, & Construction	53,600	55,000	49,500	-1,400	-2.55%	4,100	8.28%
Construction	52,600	54,000	48,500	-1,400	-2.59%	4,100	8.45%
Construction of Buildings	9,800	10,300	9,000	-500	-4.85%	800	8.89%
Nonresidential Building Construction	8,400	8,900	7,700	-500	-5.62%	700	9.09%
Heavy & Civil Engineering Construction	19,900	20,500	16,200	-600	-2.93%	3,700	22.84%
Specialty Trade Contractors	22,900	23,200	23,300	-300	-1.29%	-400	-1.72%
Manufacturing	29,500	29,500	29,300	0	0.00%	200	0.68%
Nondurable Goods	18,700	18,700	18,600	0	0.00%	100	0.54%
Chemical Manufacturing	11,100	11,100	10,800	0	0.00%	300	2.78%
Basic Chemical Manufacturing	6,000	6,000	6,000	0	0.00%	0	0.00%
Service-Providing	330,900	331,500	325,700	-600	-0.18%	5,200	1.60%
Private Service-Providing	257,700	258,000	252,500	-300	-0.12%	5,200	2.06%
Trade, Transportation, & Utilities	70,400	70,100	71,500	300	0.43%	-1,100	-1.54%
Wholesale Trade	13,500	13,400	13,300	100	0.75%	200	1.50%
Retail Trade	43,000	43,000	43,900	0	0.00%	-900	-2.05%
Grocery Stores	6,800	6,800	6,800	0	0.00%	0	0.00%
General Merchandise Stores	9,900	10,000	10,500	-100	-1.00%	-600	-5.71%
Department Stores	1,600	1,500	1,800	100	6.67%	-200	-11.11%
Transportation, Warehousing, & Utilities	13,900	13,700	14,300	200	1.46%	-400	-2.80%
Information	5,100	5,100	5,400	0	0.00%	-300	-5.56%
Financial Activities	19,400	19,300	19,100	100	0.52%	300	1.57%
Finance & Insurance	12,600	12,600	12,700	0	0.00%	-100	-0.79%
Depository Credit Intermediation	3,700	3,700	3,700	0	0.00%	0	0.00%
Professional & Business Services	49,900	50,400	49,000	-500	-0.99%	900	1.84%
Professional, Scientific, & Technical Services	19,900	20,200	20,900	-300	-1.49%	-1,000	-4.78%
Admin. & Support & Waste Mgmt. & Remediation Serv.	22,500	22,800	22,200	-300	-1.32%	300	1.35%
Education & Health Services	55,200	55,400	52,200	-200	-0.36%	3,000	5.75%
Health Care & Social Assistance	47,300	47,400	45,100	-100	-0.21%	2,200	4.88%
Ambulatory Health Care Services	20,000	19,900	20,000	100	0.50%	0	0.00%
Hospitals	12,200	12,200	12,000	0	0.00%	200	1.67%
Leisure & Hospitality	41,000	40,900	38,800	100	0.24%	2,200	5.67%
Accommodation & Food Services	33,500	33,800	33,400	-300	-0.89%	100	0.30%
Food Services & Drinking Places	30,100	30,400	30,300	-300	-0.99%	-200	-0.66%
Other Services	16,700	16,800	16,500	-100	-0.60%	200	1.21%
Government	73,200	73,500	73,200	-300	-0.41%	0	0.00%
Federal Government	2,900	2,800	3,000	100	3.57%	-100	-3.33%
State Government	37,600	37,900	37,300	-300	-0.79%	300	0.80%
Local Government	32,700	32,800	32,900	-100	-0.30%	-200	-0.61%

<i>Houma-Thibodaux MSA - Not Seasonally Adjusted</i>	Prel.	Rev.		OTM	OTM	OTY	OTY
	Dec 2017	Nov 2017	Dec 2016	Change	% Change	Change	% Change
Total Nonfarm	85,800	86,100	87,000	-300	-0.35%	-1,200	-1.38%
Total Private	73,300	73,500	74,300	-200	-0.27%	-1,000	-1.35%
Goods-Producing	17,600	17,600	16,800	0	0.00%	800	4.76%
Mining & Logging	5,400	5,600	5,400	-200	-3.57%	0	0.00%
Support Activities for Mining	4,700	4,900	4,600	-200	-4.08%	100	2.17%
Mining, Logging, & Construction	10,200	10,400	9,900	-200	-1.92%	300	3.03%
Construction	4,800	4,800	4,500	0	0.00%	300	6.67%
Service-Providing	68,200	68,500	70,200	-300	-0.44%	-2,000	-2.85%
Private Service-Providing	55,700	55,900	57,500	-200	-0.36%	-1,800	-3.13%
Trade, Transportation, & Utilities	20,600	21,000	23,200	-400	-1.90%	-2,600	-11.21%
Retail Trade	11,000	11,200	11,500	-200	-1.79%	-500	-4.35%
Support Activities for Transportation	4,200	4,200	4,400	0	0.00%	-200	-4.55%
Administrative & Support Services	3,500	3,500	3,400	0	0.00%	100	2.94%
Employment Services	1,900	1,900	1,800	0	0.00%	100	5.56%
Leisure & Hospitality	8,000	8,000	7,800	0	0.00%	200	2.56%
Government	12,500	12,600	12,700	-100	-0.79%	-200	-1.57%
Federal Government	400	400	400	0	0.00%	0	0.00%
State Government	2,000	2,100	2,200	-100	-4.76%	-200	-9.09%
Local Government	10,100	10,100	10,100	0	0.00%	0	0.00%

LOUISIANA & MSAs NONFARM EMPLOYMENT

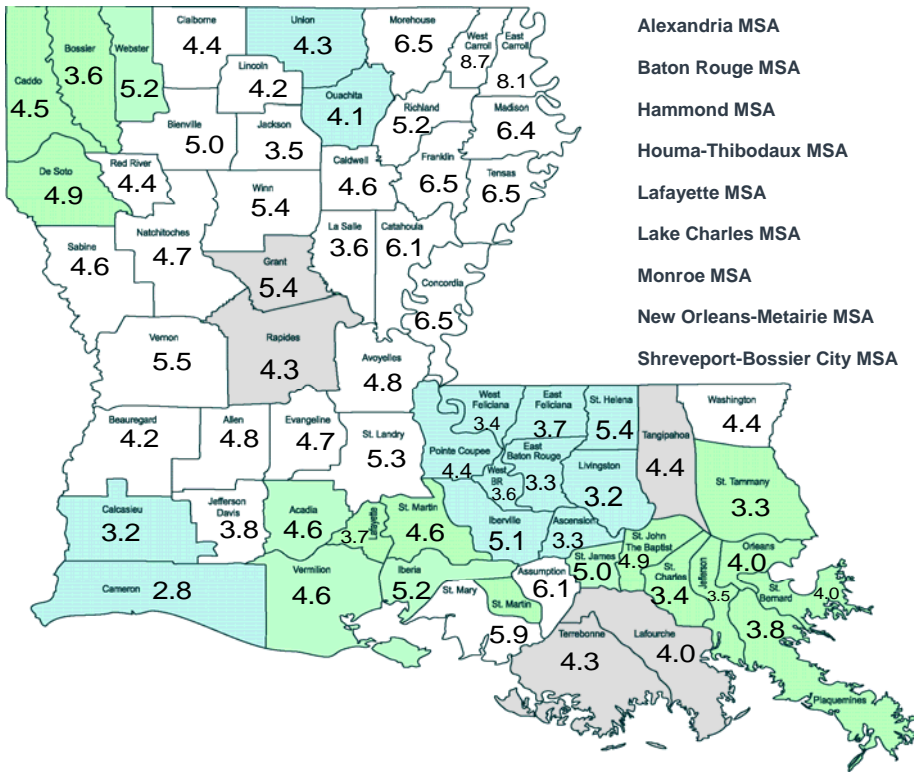
14

<i>Shreveport-Bossier City MSA - Not Seasonally Adjusted</i>	Prel.	Rev.		OTM	OTM	OTY	OTY
	Dec 2017	Nov 2017	Dec 2016	Change	% Change	Change	% Change
Total Nonfarm	178,700	178,600	180,900	100	0.06%	-2,200	-1.22%
Total Private	150,100	149,900	151,100	200	0.13%	-1,000	-0.66%
Goods-Producing	21,700	21,800	22,400	-100	-0.46%	-700	-3.13%
Mining & Logging	3,200	3,200	3,800	0	0.00%	-600	-15.79%
Mining, Logging, & Construction	11,500	11,500	12,100	0	0.00%	-600	-4.96%
Construction	8,300	8,300	8,300	0	0.00%	0	0.00%
Manufacturing	10,200	10,300	10,300	-100	-0.97%	-100	-0.97%
Service-Providing	157,000	156,800	158,500	200	0.13%	-1,500	-0.95%
Private Service-Providing	128,400	128,100	128,700	300	0.23%	-300	-0.23%
Trade, Transportation, & Utilities	38,300	38,100	38,700	200	0.52%	-400	-1.03%
Wholesale Trade	7,800	7,800	7,700	0	0.00%	100	1.30%
Retail Trade	24,300	24,200	24,600	100	0.41%	-300	-1.22%
General Merchandise Stores	6,100	6,200	6,400	-100	-1.61%	-300	-4.69%
Transportation, Warehousing, & Utilities	6,200	6,100	6,400	100	1.64%	-200	-3.13%
Information	2,000	2,000	2,100	0	0.00%	-100	-4.76%
Financial Activities	7,400	7,400	7,400	0	0.00%	0	0.00%
Professional & Business Services	16,500	16,200	16,700	300	1.85%	-200	-1.20%
Admin. & Support & Waste Mgmt. & Remediation Serv.	10,100	10,100	10,000	0	0.00%	100	1.00%
Education & Health Services	34,000	34,100	33,800	-100	-0.29%	200	0.59%
Health Care & Social Assistance	31,700	31,700	31,300	0	0.00%	400	1.28%
Hospitals	13,600	13,600	13,300	0	0.00%	300	2.26%
Leisure & Hospitality	23,500	23,600	23,300	-100	-0.42%	200	0.86%
Arts, Entertainment, & Recreation	4,600	4,800	4,600	-200	-4.17%	0	0.00%
Amusement, Gambling, & Recreation Industries	4,300	4,500	4,300	-200	-4.44%	0	0.00%
Gambling Industries	3,200	3,300	3,300	-100	-3.03%	-100	-3.03%
Accommodation & Food Services	18,900	18,800	18,700	100	0.53%	200	1.07%
Food Services & Drinking Places	15,300	15,200	15,100	100	0.66%	200	1.32%
Other Services	6,700	6,700	6,700	0	0.00%	0	0.00%
Government	28,600	28,700	29,800	-100	-0.35%	-1,200	-4.03%
Federal Government	4,900	4,800	4,900	100	2.08%	0	0.00%
State Government	4,800	4,900	5,300	-100	-2.04%	-500	-9.43%
Local Government	18,900	19,000	19,600	-100	-0.53%	-700	-3.57%
<i>Lafayette MSA - Not Seasonally Adjusted</i>							
	Prel. Dec 2017	Rev. Nov 2017	Dec 2016	OTM Change	OTM % Change	OTY Change	OTY % Change
Total Nonfarm	199,300	200,600	199,300	-1,300	-0.65%	0	0.00%
Total Private	172,500	173,600	172,600	-1,100	-0.63%	-100	-0.06%
Goods-Producing	38,200	38,700	37,900	-500	-1.29%	300	0.79%
Mining & Logging	13,500	13,700	13,600	-200	-1.46%	-100	-0.74%
Support Activities for Mining	11,200	11,500	11,300	-300	-2.61%	-100	-0.88%
Mining, Logging, & Construction	22,500	23,000	23,100	-500	-2.17%	-600	-2.60%
Construction	9,000	9,300	9,500	-300	-3.23%	-500	-5.26%
Manufacturing	15,700	15,700	14,800	0	0.00%	900	6.08%
Service-Providing	161,100	161,900	161,400	-800	-0.49%	-300	-0.19%
Private Service-Providing	134,300	134,900	134,700	-600	-0.44%	-400	-0.30%
Trade, Transportation, & Utilities	41,400	41,600	42,200	-200	-0.48%	-800	-1.90%
Wholesale Trade	9,200	9,100	9,100	100	1.10%	100	1.10%
Retail Trade	27,300	27,700	27,900	-400	-1.44%	-600	-2.15%
General Merchandise Stores	6,300	6,300	6,400	0	0.00%	-100	-1.56%
Transportation, Warehousing, & Utilities	4,900	4,800	5,200	100	2.08%	-300	-5.77%
Information	2,500	2,600	2,500	-100	-3.85%	0	0.00%
Financial Activities	10,400	10,400	10,600	0	0.00%	-200	-1.89%
Professional & Business Services	20,200	20,400	20,100	-200	-0.98%	100	0.50%
Professional, Scientific, & Technical Services	9,000	8,900	9,200	100	1.12%	-200	-2.17%
Education & Health Services	30,500	30,500	30,400	0	0.00%	100	0.33%
Health Care & Social Assistance	29,200	29,100	29,100	100	0.34%	100	0.34%
Hospitals	7,600	7,600	7,500	0	0.00%	100	1.33%
Leisure & Hospitality	22,100	22,200	21,700	-100	-0.45%	400	1.84%
Accommodation & Food Services	19,600	19,700	19,300	-100	-0.51%	300	1.55%
Food Services & Drinking Places	18,100	18,100	17,700	0	0.00%	400	2.26%
Other Services	7,200	7,200	7,200	0	0.00%	0	0.00%
Government	26,800	27,000	26,700	-200	-0.74%	100	0.37%
Federal Government	1,400	1,400	1,400	0	0.00%	0	0.00%
State Government	5,700	5,700	5,700	0	0.00%	0	0.00%
Local Government	19,700	19,900	19,600	-200	-1.01%	100	0.51%

<i>Lake Charles MSA - Not Seasonally Adjusted</i>	Prel.	Rev.		OTM	OTM	OTY	OTY
	Dec	Nov	Dec	Change	%	Change	%
	2017	2017	2016		Change		Change
Total Nonfarm	115,600	117,000	110,900	-1,400	-1.20%	4,700	4.24%
Total Private	100,600	101,600	95,900	-1,000	-0.98%	4,700	4.90%
Goods-Producing	36,000	37,100	32,600	-1,100	-2.96%	3,400	10.43%
Mining & Logging	400	500	500	-100	-20.00%	-100	-20.00%
Mining, Logging, & Construction	25,500	26,500	22,100	-1,000	-3.77%	3,400	15.38%
Construction	25,100	26,000	21,600	-900	-3.46%	3,500	16.20%
Heavy & Civil Engineering Construction	8,800	8,800	8,800	0	0.00%	0	0.00%
Manufacturing	10,500	10,600	10,500	-100	-0.94%	0	0.00%
Nondurable Goods	7,600	7,600	7,600	0	0.00%	0	0.00%
Service-Providing	79,600	79,900	78,300	-300	-0.38%	1,300	1.66%
Private Service-Providing	64,600	64,500	63,300	100	0.16%	1,300	2.05%
Trade, Transportation, & Utilities	18,800	19,000	18,800	-200	-1.05%	0	0.00%
Retail Trade	11,600	11,800	11,800	-200	-1.69%	-200	-1.69%
Professional & Business Services	9,700	9,700	9,400	0	0.00%	300	3.19%
Leisure & Hospitality	15,200	15,300	14,900	-100	-0.65%	300	2.01%
Accommodation & Food Services	13,900	13,900	13,600	0	0.00%	300	2.21%
Government	15,000	15,400	15,000	-400	-2.60%	0	0.00%
Federal Government	600	600	600	0	0.00%	0	0.00%
State Government	2,800	2,800	2,900	0	0.00%	-100	-3.45%
Local Government	11,600	12,000	11,500	-400	-3.33%	100	0.87%
<i>Monroe MSA - Not Seasonally Adjusted</i>	Prel.	Rev.		OTM	OTM	OTY	OTY
	Dec	Nov	Dec	Change	%	Change	%
	2017	2017	2016		Change		Change
Total Nonfarm	80,300	80,500	79,900	-200	-0.25%	400	0.50%
Total Private	68,900	69,100	68,000	-200	-0.29%	900	1.32%
Goods-Producing	10,900	10,900	10,500	0	0.00%	400	3.81%
Manufacturing	6,500	6,400	6,500	100	1.56%	0	0.00%
Nondurable Goods	4,700	4,600	4,700	100	2.17%	0	0.00%
Service-Providing	69,400	69,600	69,400	-200	-0.29%	0	0.00%
Private Service-Providing	58,000	58,200	57,500	-200	-0.34%	500	0.87%
Trade, Transportation, & Utilities	14,600	14,600	14,900	0	0.00%	-300	-2.01%
Retail Trade	10,100	10,200	10,500	-100	-0.98%	-400	-3.81%
Professional & Business Services	8,900	9,000	8,800	-100	-1.11%	100	1.14%
Education & Health Services	16,000	16,000	15,900	0	0.00%	100	0.63%
Hospitals	3,700	3,700	3,600	0	0.00%	100	2.78%
Leisure & Hospitality	8,100	8,200	7,900	-100	-1.22%	200	2.53%
Government	11,400	11,400	11,900	0	0.00%	-500	-4.20%
Federal Government	500	500	500	0	0.00%	0	0.00%
State Government	2,400	2,300	2,800	100	4.35%	-400	-14.29%
Local Government	8,500	8,600	8,600	-100	-1.16%	-100	-1.16%
<i>Alexandria MSA - Not Seasonally Adjusted</i>	Prel.	Rev.		OTM	OTM	OTY	OTY
	Dec	Nov	Dec	Change	%	Change	%
	2017	2017	2016		Change		Change
Total Nonfarm	62,900	62,900	63,300	0	0.00%	-400	-0.63%
Total Private	49,800	49,700	50,000	100	0.20%	-200	-0.40%
Goods-Producing	8,400	8,400	8,200	0	0.00%	200	2.44%
Service-Providing	54,500	54,500	55,100	0	0.00%	-600	-1.09%
Private Service-Providing	41,400	41,300	41,800	100	0.24%	-400	-0.96%
Trade, Transportation, & Utilities	11,100	11,000	11,900	100	0.91%	-800	-6.72%
Retail Trade	7,800	7,800	8,300	0	0.00%	-500	-6.02%
Hospitals	4,100	4,100	4,000	0	0.00%	100	2.50%
Government	13,100	13,200	13,300	-100	-0.76%	-200	-1.50%
Federal Government	2,800	2,800	2,900	0	0.00%	-100	-3.45%
State Government	3,400	3,400	3,500	0	0.00%	-100	-2.86%
Local Government	6,900	7,000	6,900	-100	-1.43%	0	0.00%

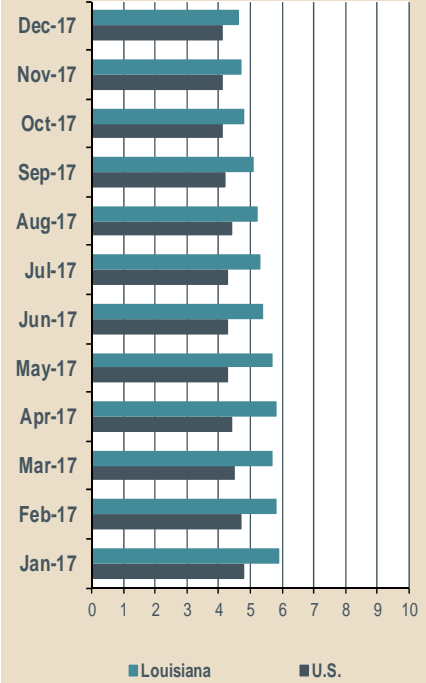
Louisiana Unemployment Rates (Not Seasonally Adjusted)

December 2017



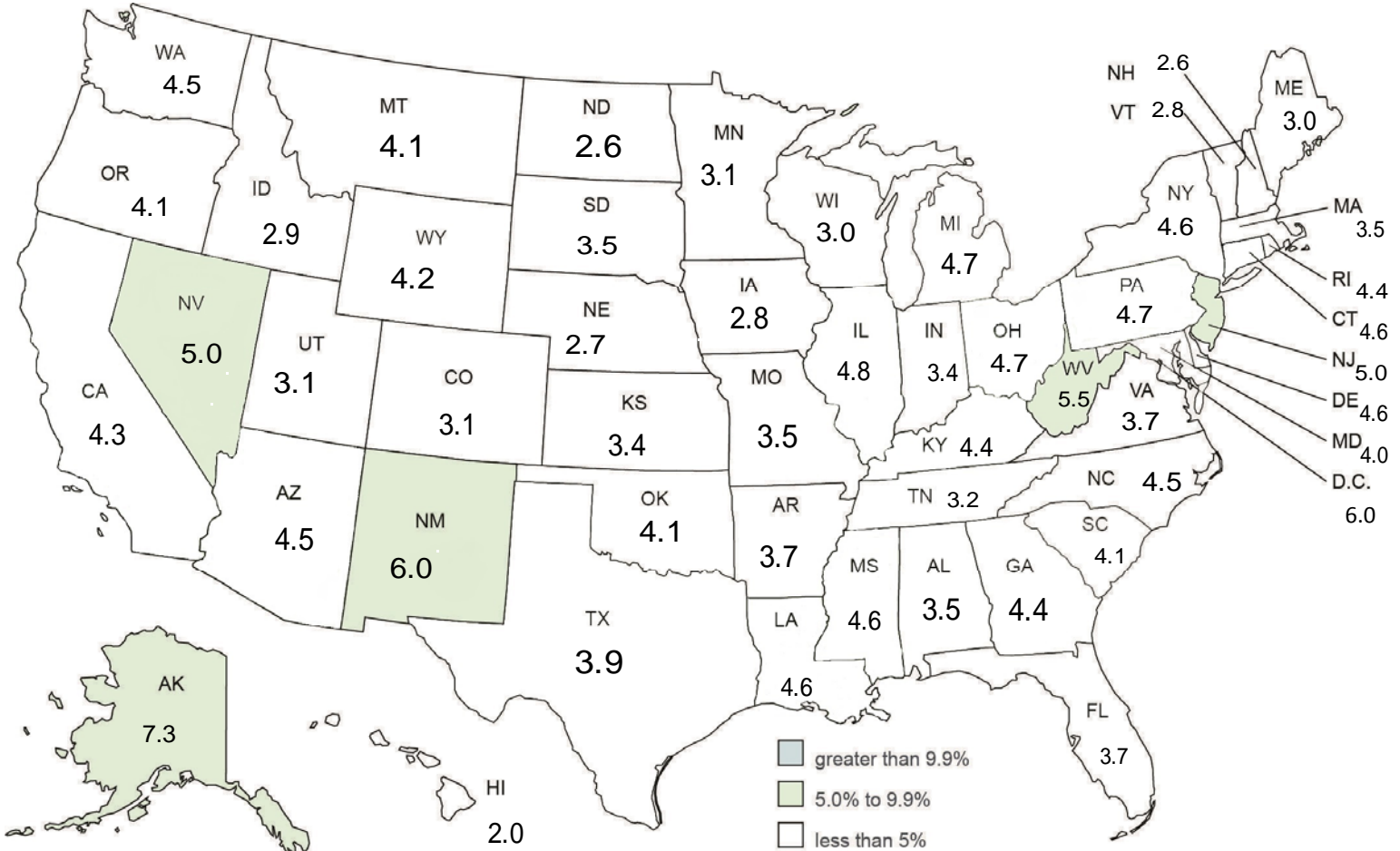
Statewide	4.0 %
Alexandria MSA	4.5 %
Baton Rouge MSA	3.4 %
Hammond MSA	4.4 %
Houma-Thibodaux MSA	4.1 %
Lafayette MSA	4.2 %
Lake Charles MSA	3.2 %
Monroe MSA	4.1 %
New Orleans-Metairie MSA	3.7 %
Shreveport-Bossier City MSA	4.3 %

United States - Louisiana Unemployment Rates (Seasonally Adjusted)



United States Unemployment Rates (Seasonally Adjusted)

December 2017



CIVILIAN LABOR FORCE (Not Seasonally Adjusted)

Area	December 2017			November 2017			December 2016		
	Employed	Unemployed	Rate	Employed	Unemployed	Rate	Employed	Unemployed	Rate
UNITED STATES	153,602,000	6,278,000	3.9	154,180,000	6,286,000	3.9	151,798,000	7,170,000	4.5
LOUISIANA	2,033,106	84,275	4.0	2,020,336	89,006	4.2	1,971,776	112,436	5.4
ALEXANDRIA MSA	62,321	2,915	4.5	61,698	2,970	4.6	60,971	3,777	5.8
Grant	7,851	444	5.4	7,774	416	5.1	7,680	577	7.0
Rapides	54,470	2,471	4.3	53,924	2,554	4.5	53,291	3,200	5.7
BATON ROUGE MSA	412,054	14,544	3.4	410,573	15,532	3.6	392,119	19,192	4.7
Ascension	60,647	2,087	3.3	60,435	2,209	3.5	57,705	2,715	4.5
East Baton Rouge	230,450	7,830	3.3	229,659	8,479	3.6	219,264	10,462	4.6
East Feliciana	7,979	304	3.7	7,950	343	4.1	7,598	391	4.9
Iberville	13,762	739	5.1	13,698	732	5.1	13,105	883	6.3
Livingston	67,030	2,227	3.2	66,784	2,357	3.4	63,798	3,052	4.6
Pointe Coupee	9,683	441	4.4	9,629	460	4.6	9,232	570	5.8
St. Helena	4,248	244	5.4	4,231	247	5.5	4,045	303	7.0
West Baton Rouge	12,983	489	3.6	12,938	516	3.8	12,349	606	4.7
West Feliciana	5,272	183	3.4	5,249	189	3.5	5,023	210	4.0
HAMMOND MSA	52,450	2,423	4.4	52,035	2,488	4.6	50,558	3,216	6.0
Tangipahoa	52,450	2,423	4.4	52,035	2,488	4.6	50,558	3,216	6.0
HOUMA-THIBODAUX MSA	84,722	3,660	4.1	84,107	3,866	4.4	83,446	5,423	6.1
Lafourche	39,839	1,650	4.0	39,565	1,753	4.2	39,229	2,386	5.7
Terrebonne	44,883	2,010	4.3	44,542	2,113	4.5	44,217	3,037	6.4
LAFAYETTE MSA	201,793	8,882	4.2	200,847	9,427	4.5	196,256	13,052	6.2
Acadia	22,635	1,086	4.6	22,493	1,166	4.9	22,035	1,572	6.7
Iberia	27,634	1,517	5.2	27,487	1,597	5.5	26,886	2,458	8.4
Lafayette	107,574	4,157	3.7	107,138	4,464	4.0	104,580	5,876	5.3
St. Martin	21,174	1,032	4.6	21,061	1,079	4.9	20,604	1,502	6.8
Vermilion	22,776	1,090	4.6	22,668	1,121	4.7	22,151	1,644	6.9
LAKE CHARLES MSA	109,856	3,577	3.2	109,960	3,824	3.4	102,711	4,484	4.2
Calcasieu	105,921	3,463	3.2	106,023	3,698	3.4	99,031	4,341	4.2
Cameron	3,935	114	2.8	3,937	126	3.1	3,680	143	3.7
MONROE MSA	78,537	3,358	4.1	78,050	3,521	4.3	75,986	4,421	5.5
Ouachita	69,675	2,955	4.1	69,261	3,104	4.3	67,401	3,890	5.5
Union	8,862	403	4.3	8,789	417	4.5	8,585	531	5.8
NEW ORLEANS-METairie MSA	577,999	22,206	3.7	573,592	23,742	4.0	564,120	28,277	4.8
Jefferson	210,455	7,680	3.5	208,848	8,146	3.8	205,407	9,885	4.6
Orleans	173,159	7,149	4.0	171,864	7,701	4.3	168,985	8,917	5.0
Plaquemines	9,807	390	3.8	9,711	403	4.0	9,584	486	4.8
St. Bernard	18,682	773	4.0	18,533	851	4.4	18,234	1,017	5.3
St. Charles	24,564	864	3.4	24,373	948	3.7	23,975	1,167	4.6
St. James	9,103	482	5.0	9,025	515	5.4	8,891	668	7.0
St. John the Baptist	19,191	991	4.9	19,043	987	4.9	18,734	1,250	6.3
St. Tammany	113,038	3,877	3.3	112,195	4,191	3.6	110,310	4,887	4.2
SHREVEPORT-BOSSIER CITY MSA	179,348	8,068	4.3	177,316	8,582	4.6	176,286	10,680	5.7
Bossier	54,165	2,013	3.6	53,547	2,156	3.9	53,243	2,638	4.7
Caddo	101,140	4,776	4.5	100,008	5,083	4.8	99,404	6,256	5.9
De Soto	10,030	513	4.9	9,909	527	5.0	9,863	694	6.6
Webster	14,013	766	5.2	13,852	816	5.6	13,776	1,092	7.3
NON-MSA PARISHES									
Allen	8,598	435	4.8	8,610	425	4.7	8,281	518	5.9
Assumption	8,378	542	6.1	8,313	542	6.1	8,170	704	7.9
Avoyelles	14,611	743	4.8	14,495	772	5.1	14,382	1,032	6.7
Beauregard (DeRidder MC)	13,983	617	4.2	14,116	644	4.4	13,926	867	5.9
Bienville	5,267	279	5.0	5,208	290	5.3	5,137	376	6.8
Caldwell	3,676	178	4.6	3,635	183	4.8	3,656	257	6.6
Catahoula	3,172	205	6.1	3,141	189	5.7	2,998	261	8.0
Claiborne	5,657	258	4.4	5,581	260	4.5	5,493	354	6.1
Concordia (Natchez, MS-LAMC)	6,546	453	6.5	6,488	448	6.5	6,526	556	7.9
East Carroll	1,844	163	8.1	1,845	182	9.0	1,836	253	12.1
Evangeline	11,868	581	4.7	11,743	620	5.0	11,512	795	6.5
Franklin	6,674	463	6.5	6,618	452	6.4	6,442	614	8.7
Jackson	6,588	241	3.5	6,520	262	3.9	6,560	320	4.7
Jefferson Davis	13,061	517	3.8	13,050	573	4.2	12,585	710	5.3
La Salle	6,000	225	3.6	5,955	244	3.9	5,778	316	5.2
Lincoln (Ruston MC)	19,919	867	4.2	19,758	958	4.6	19,393	1,112	5.4
Madison	3,524	240	6.4	3,473	256	6.9	3,382	297	8.1
Morehouse (Bastrop MC)	9,750	681	6.5	9,648	654	6.3	9,464	935	9.0
Natchitoches (Natchitoches MC)	15,144	754	4.7	14,900	815	5.2	14,738	991	6.3
Red River	3,647	166	4.4	3,603	176	4.7	3,465	211	5.7
Richland	7,965	437	5.2	7,893	420	5.1	7,677	540	6.6
Sabine	8,238	399	4.6	8,123	421	4.9	8,354	520	5.9
St. Landry (Opelousas MC)	30,049	1,688	5.3	29,794	1,720	5.5	29,460	2,262	7.1
St. Mary (Morgan City MC)	18,806	1,185	5.9	18,648	1,242	6.2	19,585	1,872	8.7
Tensas	1,361	94	6.5	1,375	97	6.6	1,388	136	8.9
Vernon (Fort Polk South MC)	15,028	868	5.5	15,218	849	5.3	15,205	1,225	7.5
Washington (Bogalusa MC)	16,350	753	4.4	16,195	803	4.7	15,623	975	5.9
West Carroll	3,614	345	8.7	3,571	295	7.6	3,623	508	12.3
Winn	4,708	268	5.4	4,640	265	5.4	4,679	396	7.8

In addition to nine (9) Metropolitan Statistical Areas (MSAs) in Louisiana, there are nine (9) Micropolitan Statistical Areas (MCs). Civilian Labor Force can be derived by adding employed and unemployed. For related information or data, please visit <http://www.bls.gov/au/>.

LOUISIANA - PRIVATE EMPLOYMENT (Not Seasonally Adjusted)

	Average Weekly Earnings (\$)			Average Weekly Hours			Average Hourly Earnings (\$)		
	DEC	NOV	DEC	DEC	NOV	DEC	DEC	NOV	DEC
	2017	2017	2016	2017	2017	2016	2017	2017	2016
Total Private	821.28	821.47	803.62	35.4	35.5	35.2	23.20	23.14	22.83
Goods-Producing	1,133.20	1,128.28	1,118.81	41.8	42.1	41.7	27.11	26.80	26.83
Private Service-Providing	747.16	747.16	730.62	33.9	33.9	33.7	22.04	22.04	21.68
Construction	1,078.53	1,063.94	1,074.80	40.9	40.5	40.3	26.37	26.27	26.67
Manufacturing	1,114.18	1,117.15	1,077.76	42.3	43.1	42.1	26.34	25.92	25.60
Trade, Transportation, and Utilities	731.48	740.61	703.61	35.1	35.2	35.5	20.84	21.04	19.82
Financial Activities	995.15	979.16	954.69	36.6	36.7	36.3	27.19	26.68	26.30
Professional and Business Services	977.11	976.51	971.65	36.9	37.3	37.4	26.48	26.18	25.98
Education and Health Services	773.50	777.74	762.80	34.0	33.8	33.5	22.75	23.01	22.77
Leisure and Hospitality	368.29	362.61	360.72	27.1	26.9	26.7	13.59	13.48	13.51

METROPOLITAN STATISTICAL AREAS (MSAs) - PRIVATE EMPLOYMENT
(Not Seasonally Adjusted)

	Average Weekly Earnings (\$)			Average Weekly Hours			Average Hourly Earnings (\$)		
	DEC	NOV	DEC	DEC	NOV	DEC	DEC	NOV	DEC
	2017	2017	2016	2017	2017	2016	2017	2017	2016
Alexandria	663.00	661.92	689.81	34.0	33.6	34.2	19.50	19.70	20.17
Baton Rouge	899.57	905.12	861.35	36.2	36.6	36.1	24.85	24.73	23.86
Hammond	650.76	645.22	512.24	31.9	31.8	30.6	20.40	20.29	16.74
Houma	984.47	950.21	870.32	39.3	38.8	36.8	25.05	24.49	23.65
Lafayette	874.44	876.04	852.02	36.0	36.2	36.9	24.29	24.20	23.09
Lake Charles	766.47	778.62	887.43	35.6	35.7	36.4	21.53	21.81	24.38
Monroe	704.88	706.48	717.44	36.0	36.1	36.4	19.58	19.57	19.71
New Orleans	885.20	888.30	856.25	34.7	35.0	34.1	25.51	25.38	25.11
Shreveport	667.49	663.67	664.98	33.9	33.3	33.5	19.69	19.93	19.85

AVERAGE HOURS AND EARNINGS FOR PRODUCTION WORKERS IN MANUFACTURING
AND SELECTED NONMANUFACTURING INDUSTRIES (Not Seasonally Adjusted)

	Production Workers	Average Weekly Earnings (\$)			Average Weekly Hours			Average Hourly Earnings (\$)		
		DEC	NOV	DEC	DEC	NOV	DEC	DEC	NOV	DEC
		2017	2017	2016	2017	2017	2016	2017	2017	2016
Mining & Logging	26,900	1,515.98	1,459.76	1,436.39	49.3	49.5	47.8	30.75	29.49	30.05
Manufacturing	105,400	944.25	943.67	927.94	42.4	42.7	43.0	22.27	22.10	21.58
Durable Goods	47,700	1,034.52	1,023.56	955.83	44.4	44.1	42.5	23.30	23.21	22.49
Nondurable Goods	57,700	871.08	879.42	905.32	40.8	41.6	43.4	21.35	21.14	20.86

WORKFORCE DEVELOPMENT AREA		PERIOD	LABORFORCE	EMP	UNEMP	URATE
St. Tammany, Plaquemines, St. Bernard	WDA 10	November	145,884	140,439	5,445	3.7
		December	146,567	141,527	5,040	3.4
Jefferson	WDA 11	November	216,994	208,848	8,146	3.8
		December	218,135	210,455	7,680	3.5
Orleans	WDA 12	November	179,565	171,864	7,701	4.3
		December	180,308	173,159	7,149	4.0
St. James, St. John the Baptist, St. Charles	WDA 14	November	54,891	52,441	2,450	4.5
		December	55,195	52,858	2,337	4.2
Pointe Coupee, West Feliciana, East Feliciana, St. Helena, Tangipahoa, Washington, Livingston, Ascension, Iberville, West Baton Rouge	WDA 20	November	259,488	249,144	10,344	4.0
		December	260,294	250,404	9,890	3.8
East Baton Rouge	WDA 21	November	238,138	229,659	8,479	3.6
		December	238,280	230,450	7,830	3.3
Assumption, Lafourche, Terrebonne	WDA 31	November	96,828	92,420	4,408	4.6
		December	97,302	93,100	4,202	4.3
Lafayette, Vermilion, Iberia, St. Mary, St. Martin, St. Landry, Evangeline, Acadia	WDA 40	November	274,041	261,032	13,009	4.7
		December	274,852	262,516	12,336	4.5
Vernon, Allen, Beauregard, Calcasieu, Jefferson Davis, Cameron	WDA 51	November	167,269	160,954	6,315	3.8
		December	166,540	160,526	6,014	3.6
Avoyelles, Catahoula, Concordia, LaSalle, Grant, Winn	WDA 60	November	44,827	42,493	2,334	5.2
		December	45,226	42,888	2,338	5.2
Rapides	WDA 61	November	56,478	53,924	2,554	4.5
		December	56,941	54,470	2,471	4.3
DeSoto, Sabine, Natchitoches, Red River, Bienville, Lincoln, Claiborne, Webster	WDA 70	November	85,197	80,934	4,263	5.0
		December	85,917	81,915	4,002	4.7
Caddo, Bossier	WDA 71	November	160,794	153,555	7,239	4.5
		December	162,094	155,305	6,789	4.2
Ouachita	WDA 81	November	72,365	69,261	3,104	4.3
		December	72,630	69,675	2,955	4.1
Union, East Carroll, West Carroll, Morehouse, Franklin, Richland, Caldwell, Jackson, Madison, Tensas	WDA 83	November	56,585	53,367	3,218	5.7
		December	57,103	53,858	3,245	5.7

*WDA data are seasonally adjusted. November is revised, while December is preliminary.

Labor Market Questions and Answers!

When will the new projections data be included in the website?

The new projections data for the short-term 2015-2018 and long-term 2015-2024 are now on the website.

http://www.laworks.net/LaborMarketInfo/LMI_EmploymentProjections_Revised.asp

This web page shows industry and occupational information sorted by education and all occupations. The data includes occupations that are the fastest growing and the ones that will add the most jobs.

Glossary & Technical Notes

Average Hourly Earnings/Average Weekly Earnings/ Average Weekly Hours (CES/BLS) - average total money earnings, in the survey week (i.e., the week that includes the twelfth of the month), of production workers plus nonsupervisory workers not in production, including overtime, paid vacation and sick leave.

Civilian Labor Force - that portion of the population, age sixteen or older, which is employed or unemployed and actively seeking employment during the reference week of the twelfth of the month.

Employed - the members of the labor force who worked for pay or profit, or had a job from which they were temporarily absent because of illness, vacation, labor dispute, or other reasons not reflecting a shortage of work, or who worked fifteen hours or more as unpaid workers in an enterprise operated by a member of the family.

Unemployed - the members of the labor force who did not work but were seeking work or were awaiting recall from layoffs or the beginning of a new job within thirty days.

Unemployment Rate - the number of unemployed persons expressed as a percentage of the labor force.

Continued Claim - each week claimed subsequent to the filing of the initial claim for a week of unemployment compensation.

Current Employment Statistics (CES) - estimates of nonfarm employment and production workers hours and earnings by industry. They are produced as part of a nationwide program, in cooperation with the Bureau of Labor Statistics (BLS), for the state and each metropolitan statistical area (MSA) from a sample of employing establishments.

Current Population Survey (CPS) - a monthly household survey of the U.S. population conducted for the Bureau of Labor Statistics (BLS) by the Bureau of the Census, of 60,000 selected households. Respondents are interviewed to obtain information on the employment status of each household member age 16 and over, during the reference week of the twelfth.

Durable Goods - items with a normal life expectancy of three years or more. Automobiles, furniture, household appliances, and mobile homes are examples.

Extended Layoff Event - Fifty or more initial claims for unemployment insurance benefits from an establishment during a 5-week period, with at least 50 workers separated for more than 30 days.

Initial Claims - a new claim, filed to open a claim for unemployment compensation.

Metropolitan Statistical Area (MSA) - a geographical area comprised of a parish generally containing a central city (or twin cities) of 50,000 inhabitants or more and contiguous parishes that are socially and economically integrated with the central city.

Micropolitan Statistical Area (MC) - a geographical area comprised of a parish containing a central city of at least 10,000 but less than 50,000 inhabitants and contiguous parishes that are socially and economically integrated with the central city.

NAICS (North American Industry Classification System) - an industry classification system that groups establishments into industries based on the activities in which they are primarily engaged.

Nonfarm Employment - employment by place of work that does not include the self employed, unpaid family workers, domestics, or agriculture workers. All estimates of nonfarm employment in this publication are in cooperation with the U.S. Department of Labor Bureau of Labor Statistics and include all full-time and part-time workers who were employed during the pay period including the twelfth of the month.

Nondurable Goods - items that generally last for only a short period of time (less than three years). Food, beverages, apparel, and gasoline are common examples.

Seasonally Adjusted - monthly data that is adjusted to minimize the changes in any time series which result from normal annual occurrences such as Christmas, summer vacations, and weather patterns.

Separation - The release of persons from an employer as part of a mass layoff event. Such releases involve both persons subject to recall and those who are terminated by the establishment.

Subsector - refers to the three-digit NAICS code, which will fall under the particular sector. Example: If Manufacturing (31-33) is the industry sector, then Food manufacturing (311), Paper manufacturing (322), Chemical manufacturing (325), Transportation equipment manufacturing (336), are some of the subsectors of manufacturing.

Supersector - refers to these five categories: Total Nonfarm, Total Private, Goods-Producing, Service-Providing, and Private Service-Providing.

Summary Industry Sector - a combination of industry sectors. A summary sector may or may not be published. The summary industry sectors are Mining & Logging; Construction; Manufacturing; Trade, Transportation, & Utilities; Information; Financial Activities; Professional & Business Services; Education & Health Services; Leisure & Hospitality; Other Services; and Government.

Industry Sector - 20 industry sectors based on two-digit NAICS code. They are Agriculture, Forestry, Fishing and Hunting (11), Mining (21), Utilities (22), Construction (23), Manufacturing (31-33), Wholesale Trade (42), Retail Trade (44-45), Transportation and Warehousing (48-49), Information (51), Finance and Insurance (52), Real Estate and Rental and Leasing (53), Professional and Technical Services (54), Management of Companies and Enterprises (55), Administrative and Waste Services (56), Educational Services (61), Health Care and Social Assistance (62), Arts, Entertainment, and Recreation (71), Accommodation and Food Services (72), Other Services (81), and Public Administration (92).

Constraints of the monthly civilian labor force and nonfarm employment estimates:

The civilian labor force estimates are derived by a monthly survey of approximately 723 households throughout Louisiana following the Bureau of Labor Statistics (BLS) methodology. The US Census Bureau conducts the survey by calling randomly selected households and providing BLS with survey results. Households are asked for the number of residents who are sixteen and over and whether they were working or actively looking for work during the week of the twelfth of the month. Responses to these questions become part of the formula to determine the number of people employed and the number of individuals unemployed for the state, MSAs, and each parish every month.

The nonfarm employment estimates are derived from responses received from the monthly BLS survey of approximately 7,000 businesses across the state. Responses capture employment activity during the 12th of each month. This survey relies on responses from these businesses to produce industry employment levels for the state and all metropolitan statistical areas.

Both data sets are comparable with estimates for the U.S., all 50 states, and 387 metropolitan areas across the U.S.

LABOR MARKET INFORMATION WEB LINKS

Civilian Labor Force - LAUS (Local Area Unemployment Statistics) –

Employment, Unemployment and Unemployment Insurance Rate

LA <https://www.louisianaworks.net/hire/altentry.asp?action=lmiguest>

Left menu: Historical Data Analysis – Employment and Wage Data – Labor Force Data – Labor Force Employment and Unemployment (LAUS)

States <http://data.bls.gov/cgi-bin/dsrv?la>

US <http://data.bls.gov/pdq/querytool.jsp?survey=ln>

Consumer Price Index (US) <http://data.bls.gov/cgi-bin/surveymost?cu>

Download Louisiana Workforce Commission’s Labor Market Information Products

LA http://www.laworks.net/Downloads/Downloads_LMI.asp

Employment and Wage Data – Quarterly Census of Employment and Wages (QCEW)

LA <https://www.louisianaworks.net/hire/altentry.asp?action=lmiguest>

Left menu: Historical Data Analysis – Employment and Wage Data – Industry Data – Quarterly Census of Employment and Wages (QCEW)

States & US <http://data.bls.gov/cgi-bin/dsrv?en>

NAICS (North American Industry Classification System) Codes Look-Up Table

<http://www.census.gov/eos/www/naics/>

Nonfarm Employment, Hours and Earnings - CES (Current Employment Statistics)

LA <https://www.louisianaworks.net/hire/altentry.asp?action=lmiguest>

Left menu: Historical Data Analysis – Employment and Wage Data – Industry Data – Current Employment Statistics (CES) – select Show Earnings Data under table

States <http://data.bls.gov/cgi-bin/dsrv?sm>

US <http://data.bls.gov/cgi-bin/dsrv?ce>

Unemployment Insurance Claimants Data (by Occupation) - Unemployment Insurance (UI)

LA <https://www.louisianaworks.net/hire/altentry.asp?action=lmiguest>

Left menu: Historical Data Analysis – Employment and Wage Data – Labor Force Data – Unemployment Insurance Claimants

Unemployment Insurance Claims Data (by Region, Parish, Industry) - UI

LA http://www.laworks.net/LaborMarketInfo/LMI_UIClaimsReportMenu.asp

States & US <http://ows.doleta.gov/unemploy/claims.asp>

Unemployment Rates for all States - LAUS

States <http://www.bls.gov/web/laus/laumstrk.htm>



Office of Occupational Information Services
 Research & Statistics Division
 Post Office Box 94094
 Baton Rouge, LA 70804-9094

Data for: 12/2017



Workforce At A Glance is published monthly by the Louisiana Workforce Commission. The material in this publication is not copyrighted and may be reproduced; however, the LWC would appreciate credit for the material used and a copy of the reprint.

LMI Staff:

Kelly Ebey
 Kelsey Canizaro
 Jeffrey Duplantier

Contributors:

Kelsey Canizaro
 Karen Clark
 Natalie Foster-Lawrence
 Karl Gleichman
 Mark Jones
 Sean Painter
 Tara Robinson

Contact Us:

Phone (225) 342-3141; Fax (225) 219-7759
 Toll Free (888) 302-7662
 Email lmi@lwc.la.gov

John Bel Edwards, Governor
 State of Louisiana

Ava Dejoie, Executive Director
 Louisiana Workforce Commission

Connect With Us:

Website: <https://www.laworks.net>

 <https://www.facebook.com/LouisianaWorks>

 <https://twitter.com/LouisianaWorks>

 <https://www.linkedin.com/company/louisiana-workforce-commission>

 <http://instagram.com/louisianaworks>