

Louisiana Workforce

at a glance

www.laworks.net

Release Date: Sept. 21, 2011

Data For: Aug 2011

In This Issue

- 2 Economic Comparison
- 3 NSA State & Area Employment
- 4 – 7 Data Trends (Graphs)
- 8 – 10 Nonfarm Employment
- 11 – 12 Unemployment Rates & Civilian Labor Force
- 13 Average Hours & Earnings
- 14 UI Claimants & Labor Market Q & A
- 15 – 16 Glossary, Data Constraints, Downloads & Web Links

Statewide Overview

Seasonally adjusted nonfarm employment for Louisiana was estimated at 1,912,100 in August 2011. This represents a loss of 500 jobs from the previous month, but a 31,600-job increase from August 2010. Financial activities showed the largest over-the-month gain, adding 1,600 jobs. Education and health services posted the largest over-the-year change, adding 14,400 jobs.

Over the month, three of the 11 industry sectors had increases in employment, seven decreased, and the mining and logging sector showed no change. After financial activities, the next largest increase was seen in government, which added 1,500 jobs. Education and health services added 700 jobs from July. The largest over-the-month decline was seen in manufacturing, which lost 1,700 jobs. The information sector fell by 700 positions, while trade, transportation, and utilities lost 600. The leisure and hospitality sector recorded 500 fewer jobs than in July, while both professional and business services as well as other services lost 300 jobs. Construction showed a slight decrease of 200 jobs.

Over the year, eight of the 11 sectors added jobs. After education and health services, the largest over-the-year gain occurred in leisure and hospitality, which grew by 7,600 jobs. Manufacturing saw its figure increase by 6,400 jobs, while trade, transportation, and utilities added 6,300 jobs. The information sector rose by 2,900 from August 2010. Financial activities added 2,000 jobs from last year. The mining and logging sector added 1,900 jobs from last August, while construction added 1,700. The largest over-the-year decline was seen in government, which lost 8,400 jobs. Professional and business services lost 2,800 jobs from last August, while other services showed a loss of 400 jobs.

The August 2011 preliminary seasonally adjusted unemployment rate for Louisiana was 7.2 percent, a decrease from the July revised rate of 7.6 percent. The national unemployment rate for August remained the same as the July rate of 9.1 percent. Total unemployment in the state for August was 146,673. The state civilian labor force decreased to 2,032,058 with an increase in total employment to 1,885,385.

Economic Indicators

Seasonally Adjusted	PRELIMINARY AUG 2011	
	United States	Louisiana
Civilian Labor Force		
Labor Force	153,594,000	2,032,058
Employed	139,627,000	1,885,385
Unemployed	13,967,000	146,673
Unemployment Rate	9.1	7.2
Nonfarm Wage and Salary Employment	AUG 2011	AUG 2011
	United States	Louisiana
Total Nonfarm	131,132,000	1,912,100
Mining and Logging	803,000	54,300
Construction	5,524,000	123,100
Manufacturing	11,757,000	143,100
Trade, Transportation, and Utilities	24,938,000	369,800
Information	2,631,000	28,500
Financial Activities	7,605,000	95,200
Professional and Business Services	17,211,000	191,800
Education and Health Services	20,024,000	285,800
Leisure and Hospitality	13,216,000	201,000
Other Services	5,461,000	65,700
Government	21,962,000	353,800
All Employees Average Hours & Earnings		
(Not Seasonally Adjusted)		
Construction	AUG 2011	AUG 2011
	United States	Louisiana
Average Weekly Earnings	\$ 998.03	\$ 921.86
Average Weekly Hours	39.2	41.6
Average Hourly Wages	\$ 25.46	\$ 22.16
Manufacturing		
Average Weekly Earnings	\$ 955.80	\$ 1,009.42
Average Weekly Hours	40.5	41.1
Average Hourly Wages	\$ 23.60	\$ 24.56
Louisiana Unemployment Insurance Activities		
Claims	AUG 2011	
Initial New & Renewals	16,523	
Continued Weekly Intrastate Only	208,409	
Insured Unemployment Rate	2.6	
Benefits		
Number of First Payment	9,248	
Benefits Paid (000's)	\$ 34,350	
Weeks Compensated	177,325	
Average Wkly. Benefit Amount	\$ 195.39	
Average Duration of Claim (weeks)	19.2	
Exhaustions	4,504	
United States Consumer Price Index		
	AUG 2011	
All Urban Consumers	226.5	



The civilian labor force and nonfarm **estimates** are prepared according to Bureau of Labor Statistics (BLS) methodology and are comparable with the U.S. and other states' data. For more information, go to page 15.

Economic Comparison

Seasonally Adjusted	PRELIMINARY AUG 2011		REVISED JULY 2011		REVISED AUG 2010	
	United States	Louisiana	United States	Louisiana	United States	Louisiana
Civilian Labor Force						
Labor Force	153,594,000	2,032,058	153,228,000	2,037,757	154,117,000	2,086,216
Employed	139,627,000	1,885,385	139,296,000	1,883,559	139,267,000	1,926,031
Unemployed	13,967,000	146,673	13,931,000	154,198	14,849,000	160,185
Unemployment Rate	9.1	7.2	9.1	7.6	9.6	7.7
Nonfarm Wage and Salary Employment	AUG 2011	AUG 2011	JULY 2011	JULY 2011	AUG 2010	AUG 2010
	United States	Louisiana	United States	Louisiana	United States	Louisiana
Total Nonfarm	131,132,000	1,912,100	131,132,000	1,912,600	129,873,000	1,880,500
Mining and Logging	803,000	54,300	798,000	54,300	719,000	52,400
Construction	5,524,000	123,100	5,529,000	123,300	5,520,000	121,400
Manufacturing	11,757,000	143,100	11,760,000	144,800	11,551,000	136,700
Trade, Transportation, and Utilities	24,938,000	369,800	24,946,000	370,400	24,601,000	363,500
Information	2,631,000	28,500	2,679,000	29,200	2,711,000	25,600
Financial Activities	7,605,000	95,200	7,602,000	93,600	7,616,000	93,200
Professional and Business Services	17,211,000	191,800	17,183,000	192,100	16,711,000	194,600
Education and Health Services	20,024,000	285,800	19,990,000	285,100	19,612,000	271,400
Leisure and Hospitality	13,216,000	201,000	13,214,000	201,500	13,051,000	193,400
Other Services	5,461,000	65,700	5,452,000	66,000	5,369,000	66,100
Government	21,962,000	353,800	21,979,000	352,300	22,412,000	362,200

All Employees Average Hours & Earnings

Construction	United States (Not Seasonally Adjusted)			Louisiana (Not Seasonally Adjusted)		
	AUG 2011	JULY 2011	AUG 2010	AUG 2011	JULY 2011	AUG 2010
Average Weekly Earnings	\$ 998.03	\$ 981.84	\$ 977.56	\$ 921.86	\$ 902.32	\$ 875.50
Average Weekly Hours	39.2	38.9	38.9	41.6	40.7	41.2
Average Hourly Wages	\$ 25.46	\$ 25.24	\$ 25.13	\$ 22.16	\$ 22.17	\$ 21.25
Manufacturing						
Average Weekly Earnings	\$ 955.80	\$ 951.97	\$ 943.65	\$ 1,009.42	\$ 1,048.13	\$ 998.90
Average Weekly Hours	40.5	40.1	40.5	41.1	41.2	41.9
Average Hourly Wages	\$ 23.60	\$ 23.74	\$ 23.30	\$ 24.56	\$ 25.44	\$ 23.84

Louisiana Unemployment Insurance Activities

Claims	AUG 2011	JULY 2011	AUG 2010	% Change From	
				JULY 2011	AUG 2010
Initial New & Renewals	16,523	15,543	17,115	6.3	-3.5
Continued Weekly Intrastate Only	208,409	173,395	247,777	20.2	-15.9
Insured Unemployment Rate*	2.6	2.5	3.1	3.2	-17.0
Benefits					
Number of First Payment	9,248	8,530	8,933	8.4	3.5
Benefits Paid (000's)	\$ 34,350	\$ 28,600	\$ 39,052	20.1	-12.0
Weeks Compensated	177,325	147,489	200,469	20.2	-11.5
Average Wkly. Benefit Amount	\$ 195.39	\$ 195.45	\$ 196.71	0.0	-0.7
Average Duration of Claim (w eeks)	19.2	17.3	22.3	10.9	-14.0
Exhaustions	4,504	4,596	5,557	-2.0	-18.9

* Insured unemployment rate is for the week including the 12th of the month.

United States Consumer Price Index

	AUG 2011	% Change From:		JULY 2011	% Change From:	
	Index	Prior Month	Prior Year	Index	Prior Month	Prior Year
All Urban Consumers	226.5	0.3	3.8	225.9	0.1	3.6

Not Seasonally Adjusted State and Area Employment

Not seasonally adjusted nonfarm employment for Louisiana was estimated at 1,905,300 for August 2011. Over the month, employment rose by 1,600 jobs from July, while over the year employment gained 30,300 jobs. Goods-producing employment lost 100 jobs over the month, while the service-providing employment added 1,700 jobs when compared to July. Over the year, goods-producing industries gained 9,500 jobs while the service-providing sector gained 20,800.

Total nonfarm employment in August for the Alexandria MSA was 65,800, an increase of 200 jobs from July, and a gain of 2,500 from a year ago. The goods-producing sector showed no change over the month, but added 200 jobs over the year. Service-providing employment increased by 200 jobs from July and gained 2,300 jobs from August 2010.

Total nonfarm employment for the Baton Rouge MSA was estimated at 357,500 for August 2011. Over the month, the MSA showed a decrease of 1,500 jobs, while over the year, nonfarm employment declined by 4,900 jobs. Goods-producing employment showed a loss of 400 jobs from last month and 800 jobs from last year. The service-providing sector lost 1,100 jobs from July and 4,100 jobs over the year.

The Houma MSA nonfarm employment was estimated at 95,900 for August 2011. This shows a gain from July of 700 jobs and an over-the-year gain of 3,100. Goods producing showed no change over the month, while adding 700 jobs from last year. Service-providing rose by 700 jobs from last month and picked up 2,400 jobs over the year.

Total nonfarm employment for the Lafayette MSA was estimated at 150,100 for August 2011. This represents a gain from July of 1,500 jobs and an increase of 2,800 jobs from last year. Over the month, goods-producing employment rose by 800, while the service-providing sector added 700 jobs. Over the year, both the goods-producing and service-providing sectors added 1,400 jobs.

Total nonfarm employment for the Lake Charles MSA was 90,400 for August 2011. This represents a loss of 700 jobs from July but an increase of 2,300 jobs over the year. Over the month, the goods-producing sector showed no change, while the service-providing sector lost 700 jobs. The goods-producing sector added 500 jobs from last August, while the service-providing sector increased by 1,800 jobs over the year.

Total nonfarm employment for the Monroe MSA was estimated at 75,300 for August 2011. This represents a gain of 200 jobs over the month and 700 jobs over the year. Goods-producing employment showed no change from July, but added 300 jobs from August 2010. The service-providing sector gained 200 jobs from July and 400 jobs over the year.

Total nonfarm employment for the New Orleans MSA was 526,200 for August 2011. Over the month, the MSA lost 1,000 jobs, while over the year saw an increase of 10,500 positions. Goods-producing employment showed a decline of 700 jobs from July, and showed no change from August 2010. The service-providing sector decreased by 300 jobs from July, but added 10,500 jobs from August 2010.

Total nonfarm employment for the Shreveport MSA was 181,100 for August 2011. This shows an increase of 100 jobs from last month and a gain of 2,900 from August 2010. Goods-producing employment showed no change from July but a gain of 1,000 from August 2010. Service-providing employment added 100 jobs over the month and 1,900 jobs compared to last year.

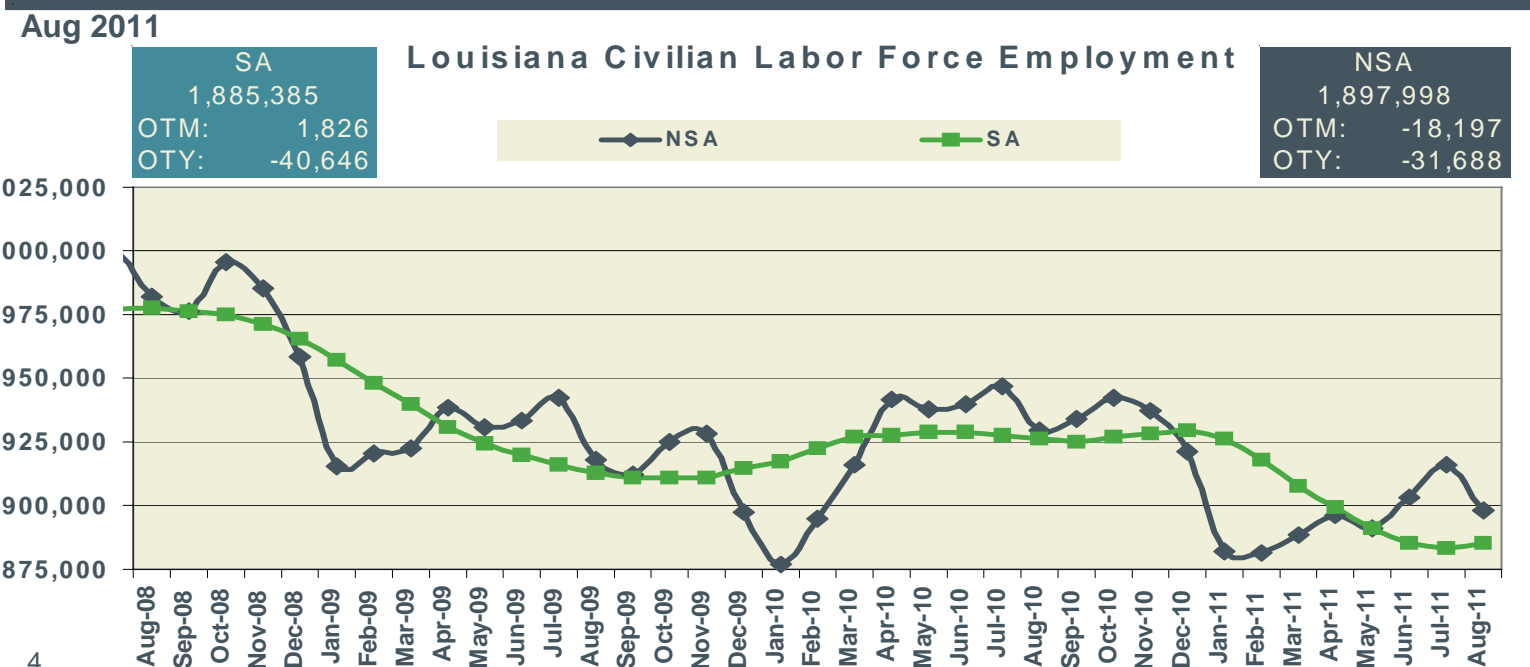
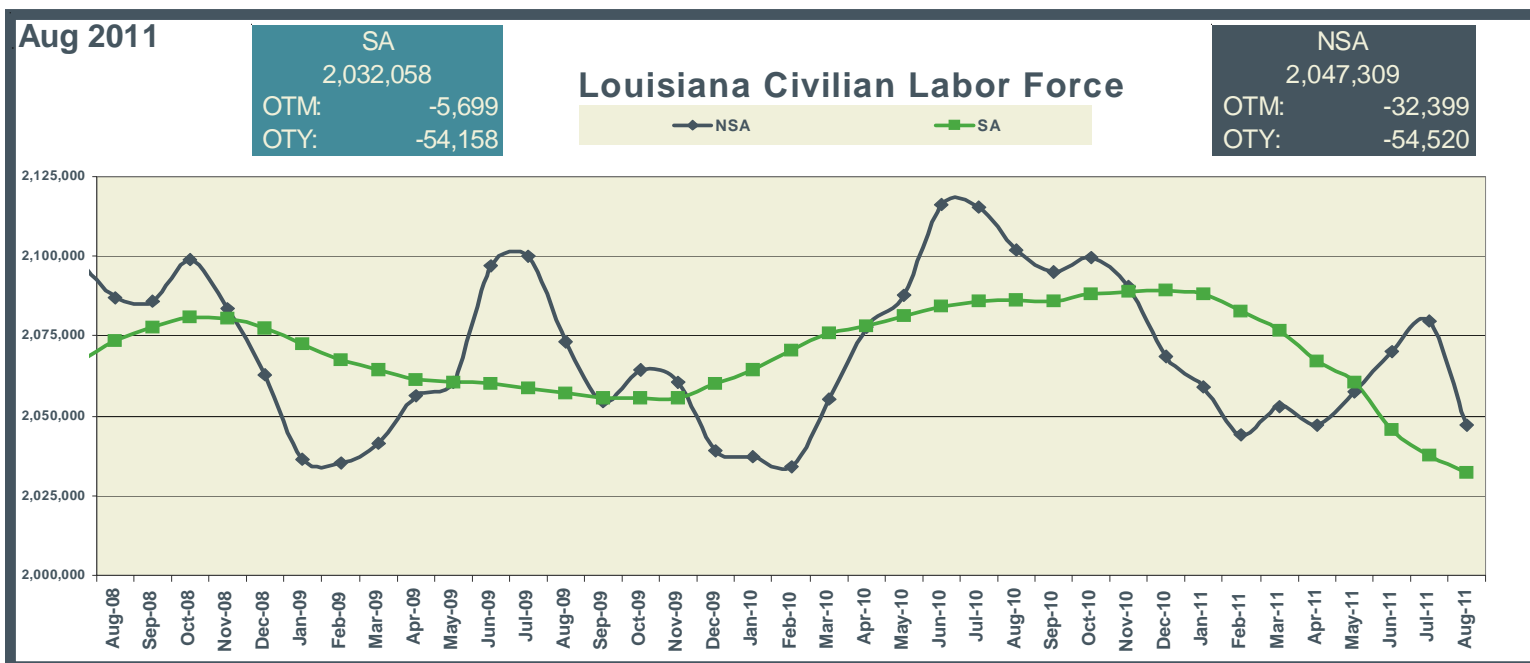
Keys to Graphs

The following graphs have been designed to reflect the over-the-year trends in the statistical data. Below are the most frequently used abbreviations.

- OTM over-the-month change in employment
- OTY over-the-year change in employment
- SA seasonally adjusted estimates
- NSA not seasonally adjusted estimates

Graphs for statewide reflect seasonally adjusted (SA) estimates compared to not seasonally adjusted (NSA) data.

Metropolitan Statistical Areas (MSAs) graphs denote nonfarm employment levels compared to a three year red trend line of the estimated employment. The navy lines in the graphs are the over-the-month changes for each year.

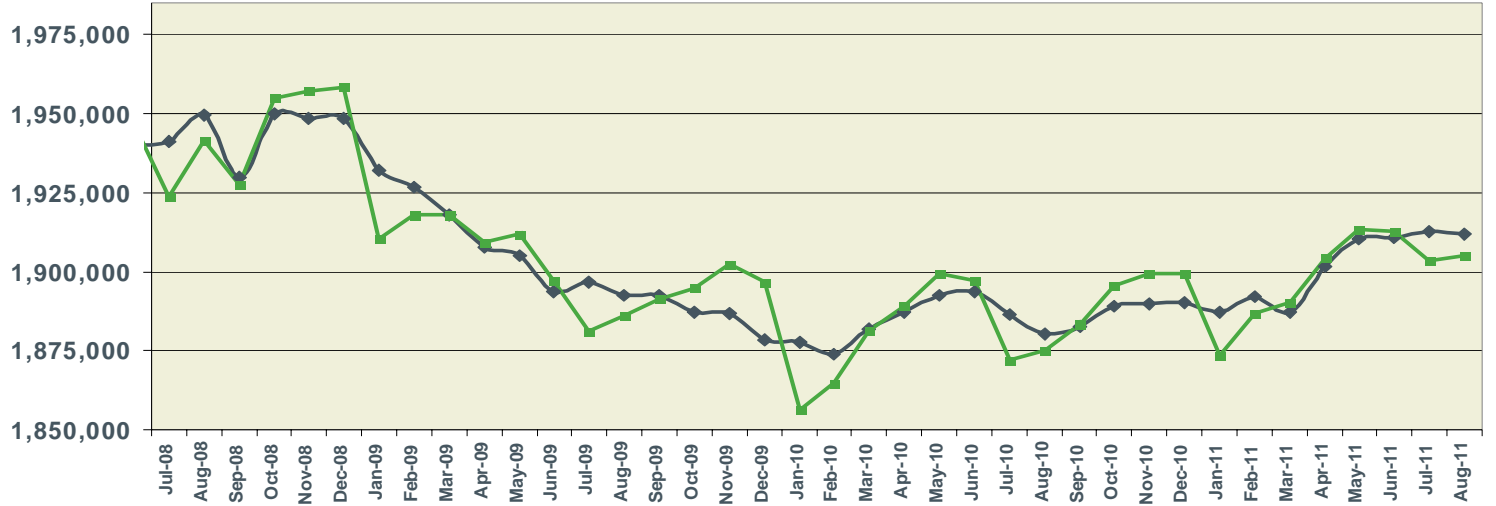


Aug 2011

SA
1,912,100
OTM: -500
OTY: 31,600

Louisiana Nonfarm Employment

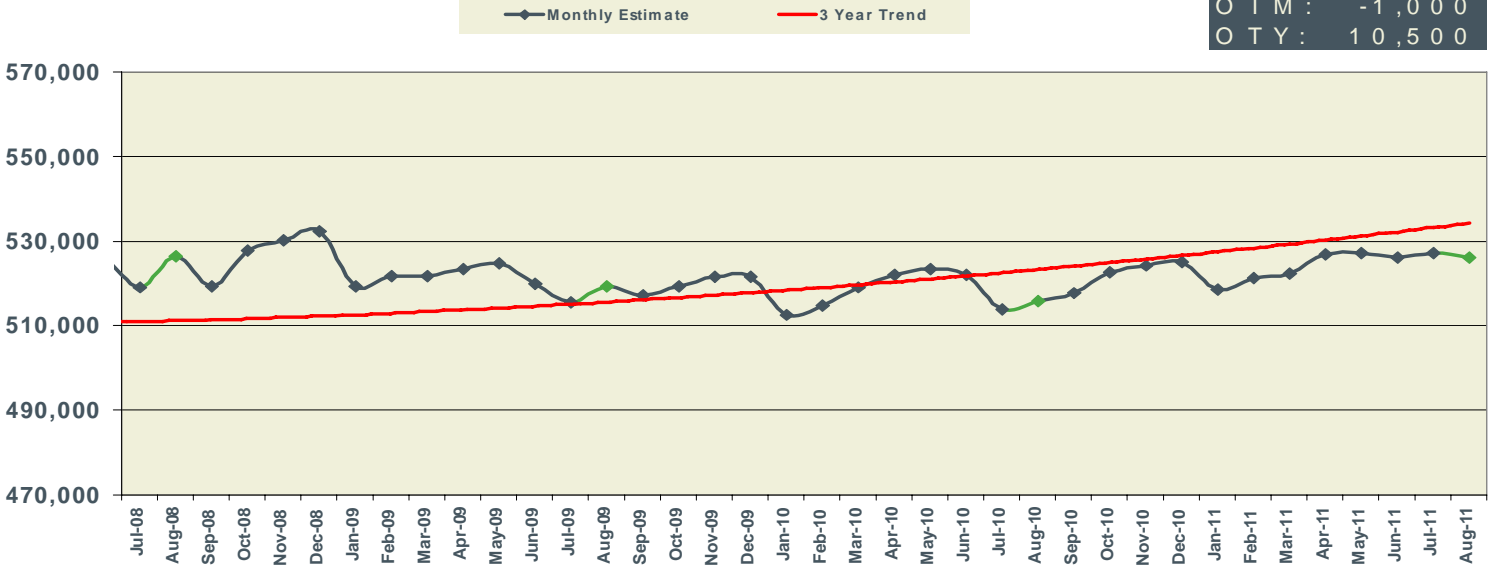
NSA
1,905,300
OTM: 1,600
OTY: 30,300



Aug 2011

New Orleans MSA Nonfarm Employment

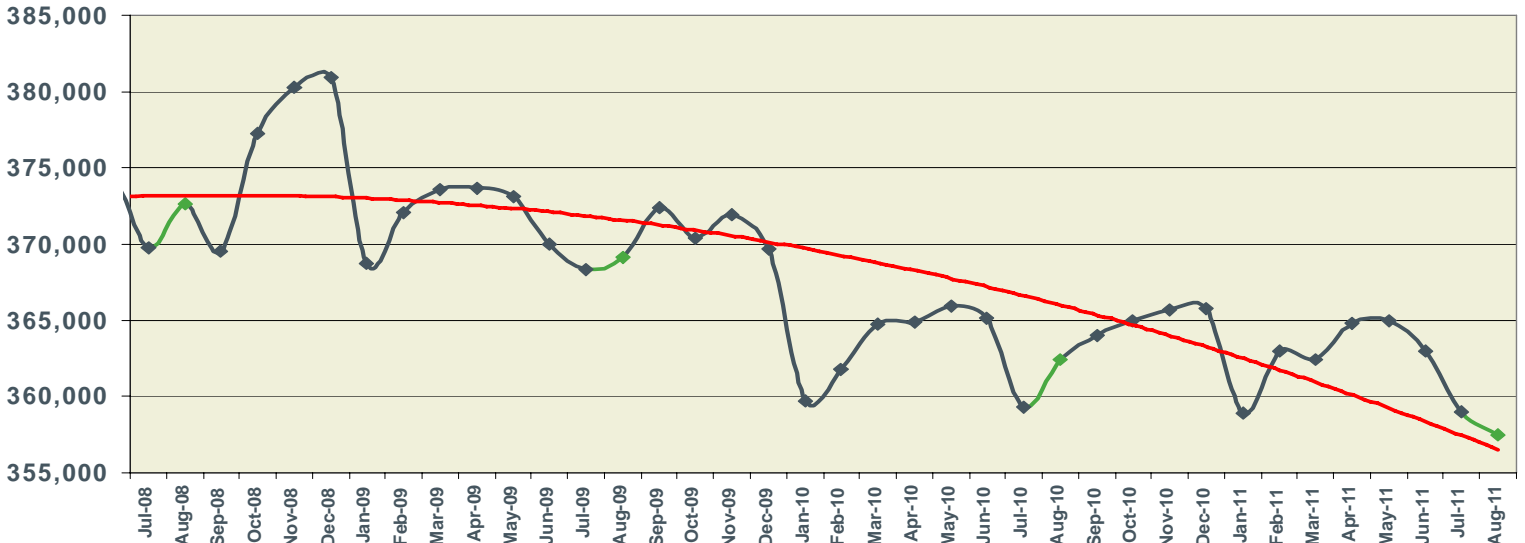
NSA
526,200
OTM: -1,000
OTY: 10,500



Aug 2011

Baton Rouge MSA Nonfarm Employment

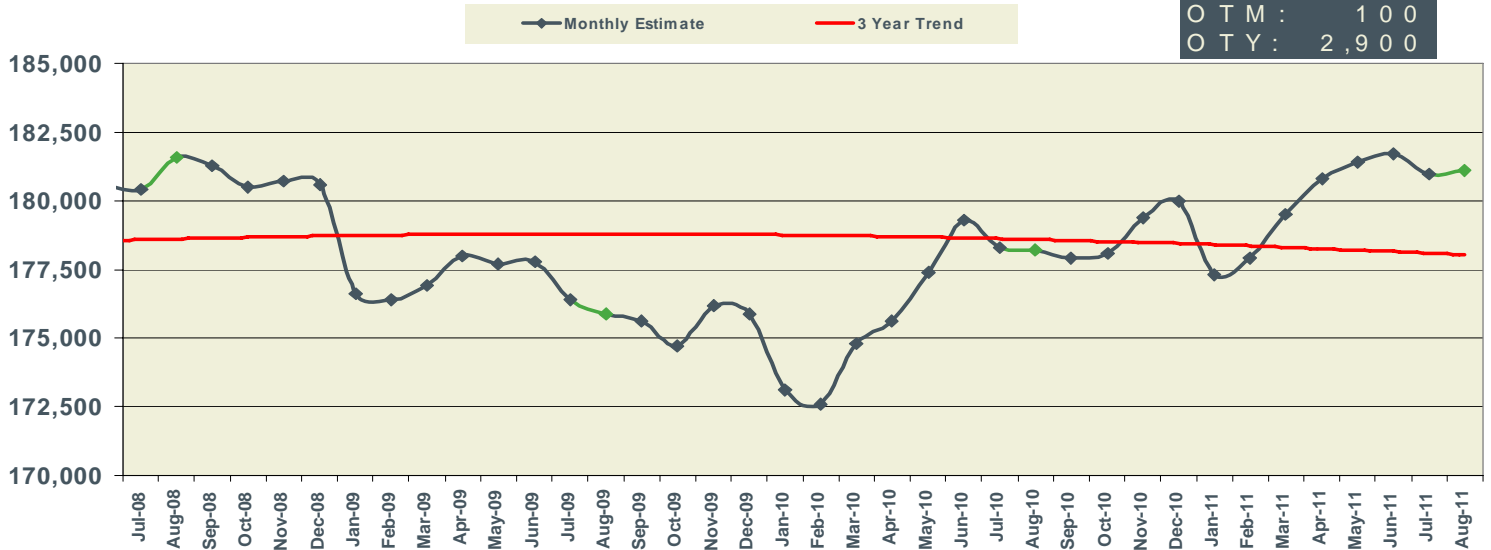
NSA
357,500
OTM: -1,500
OTY: -4,900



Aug 2011

Shreveport MSA Nonfarm Employment

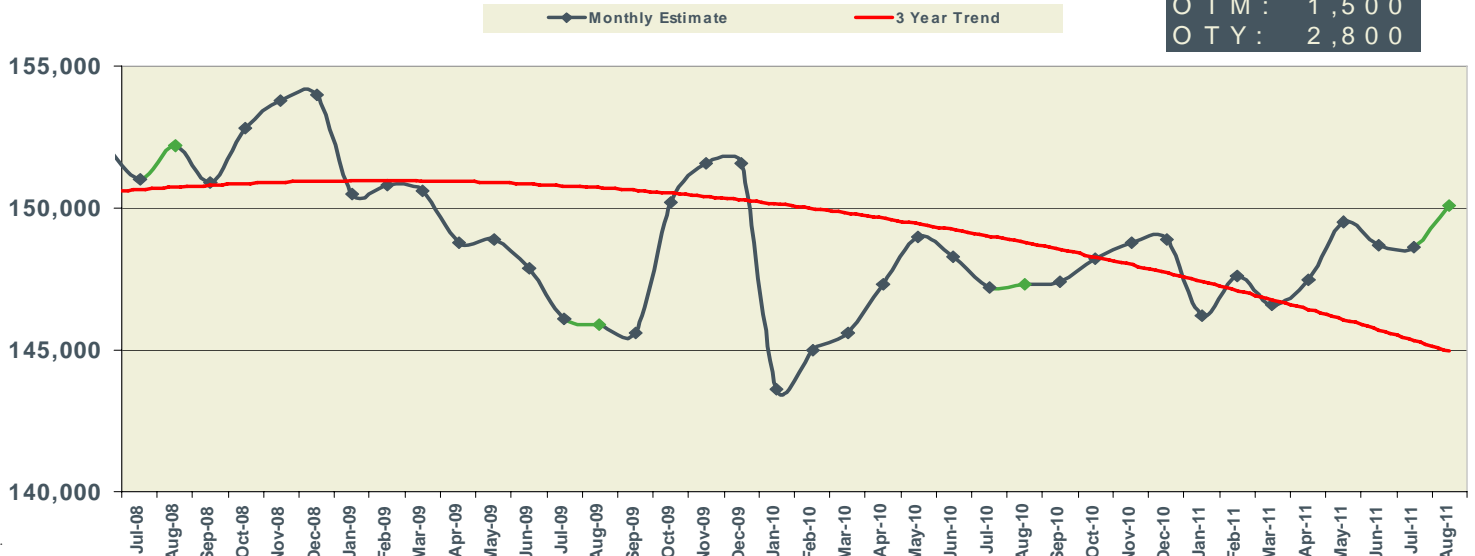
NSA	181,100
OTM	100
OTY	2,900



Aug 2011

Lafayette MSA Nonfarm Employment

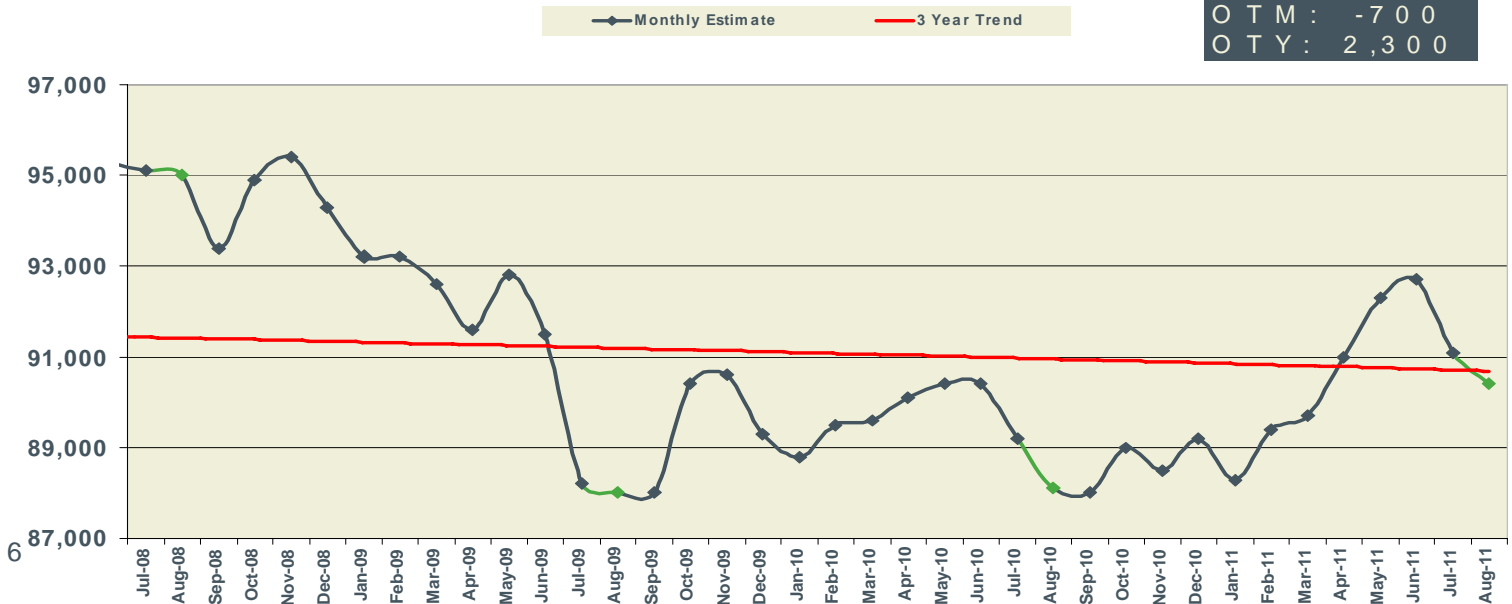
NSA	150,100
OTM	1,500
OTY	2,800



Aug 2011

Lake Charles MSA Nonfarm Employment

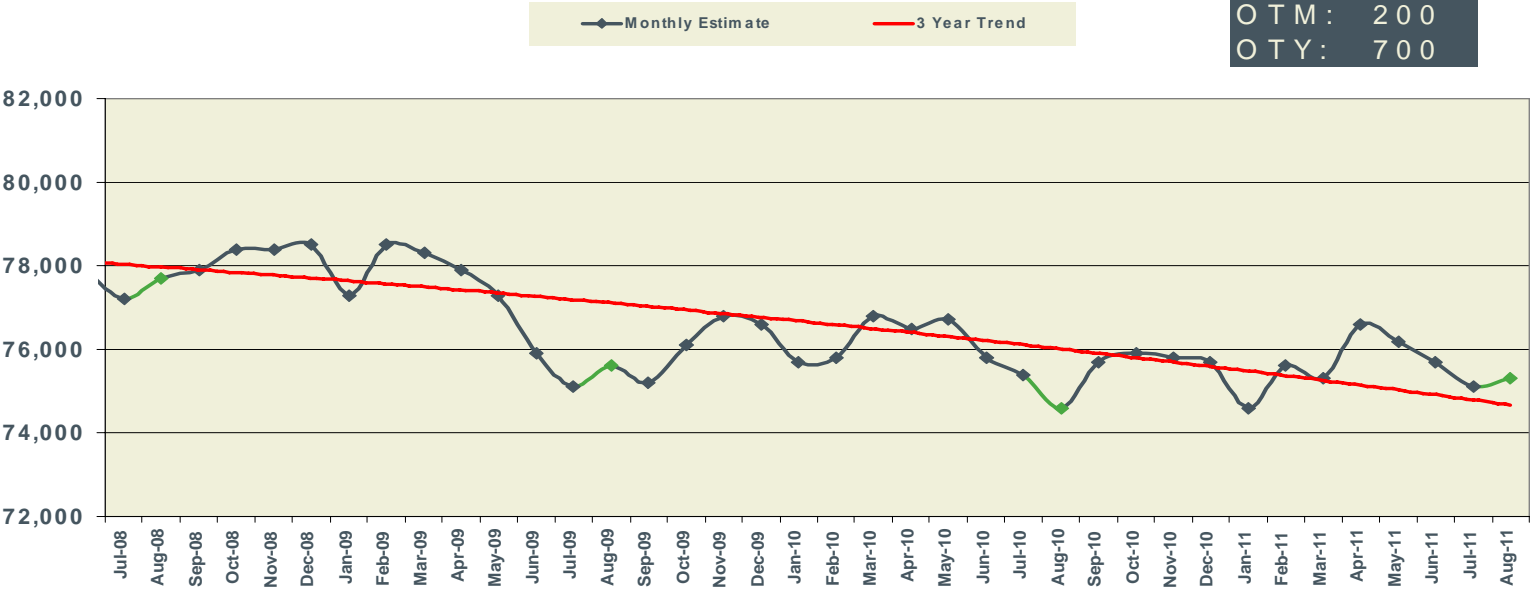
NSA	90,400
OTM	-700
OTY	2,300



Aug 2011

Monroe MSA Nonfarm Employment

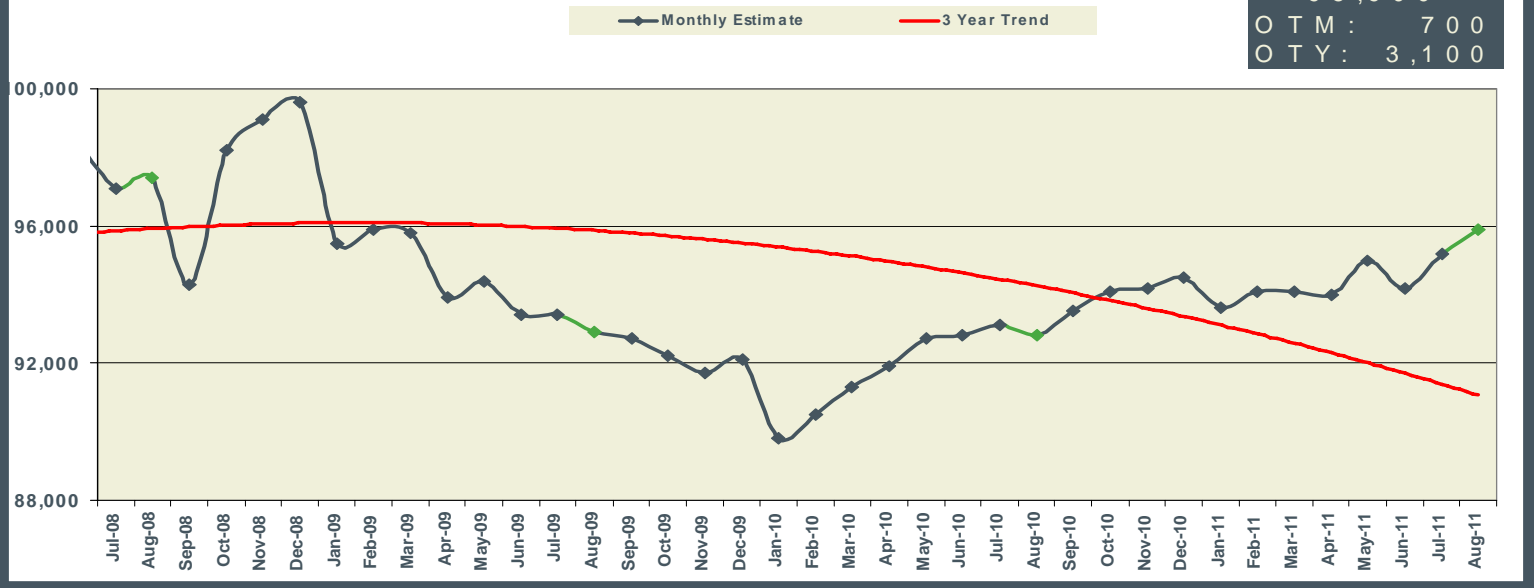
NSA
75,300
OTM: 200
OTY: 700



Aug 2011

Houma MSA Nonfarm Employment

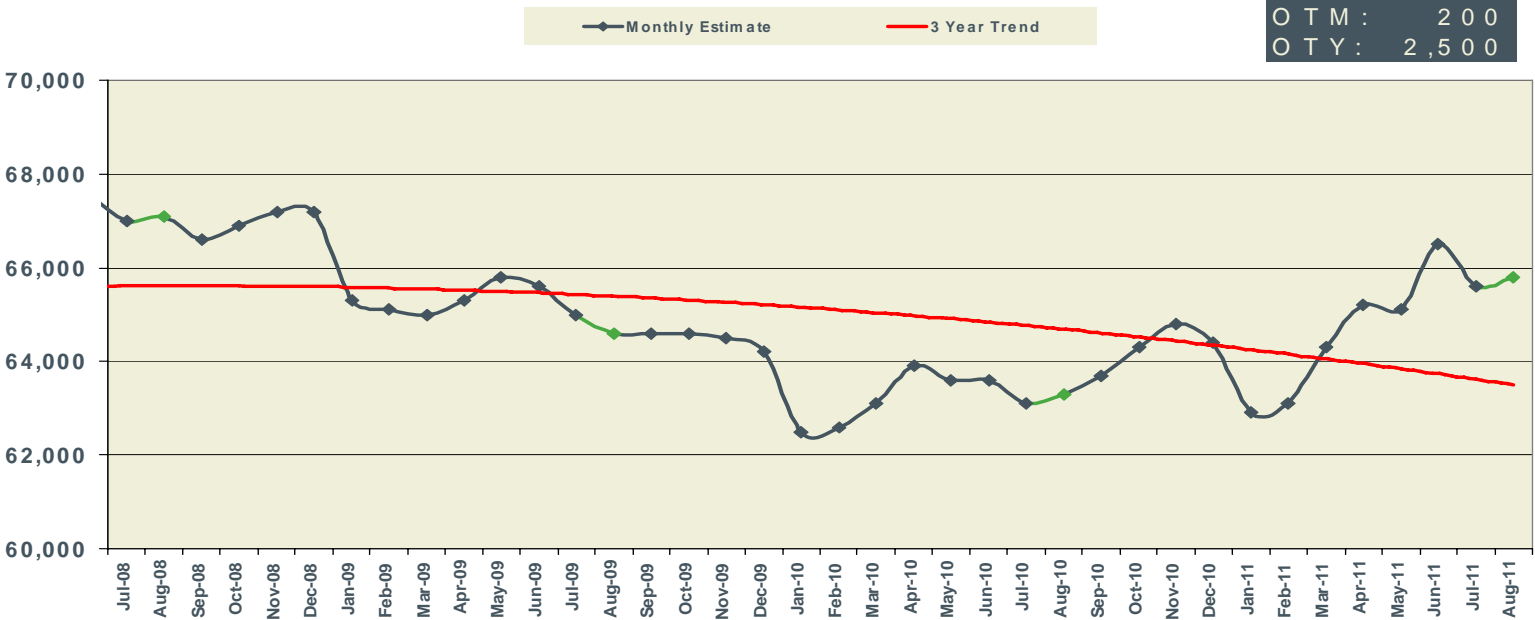
NSA
95,900
OTM: 700
OTY: 3,100



Aug 2011

Alexandria MSA Nonfarm Employment

NSA
65,800
OTM: 200
OTY: 2,500



	LOUISIANA			NEW ORLEANS-METAIRIE-KENNER MSA			BATON ROUGE MSA		
	PREL	REV	REV	PREL	REV	REV	PREL	REV	REV
	Aug 2011	July 2011	Aug 2010	Aug 2011	July 2011	Aug 2010	Aug 2011	July 2011	Aug 2010
<i>Not Seasonally Adjusted</i>									
Total Nonfarm	1,905,300	1,903,700	1,875,000	526,200	527,200	515,700	357,500	359,000	362,400
Total Private	1,558,800	1,559,400	1,521,700	444,600	447,100	434,900	285,400	286,400	286,500
Goods-Producing	321,800	321,900	312,300	69,900	70,600	69,900	63,700	64,100	64,500
Mining & Logging	54,400	54,200	52,800	7,500	7,600	7,600	2,000	2,000	1,900
Oil & Gas Extraction	8,700	8,700	8,600	2,900	2,900	2,900			
Crude Petroleum & Natural Gas Extraction	8,200	8,200	8,000						
Support Activities for Mining	40,500	40,300	40,300						
Drilling Oil & Gas Wells	9,300	9,300	9,100						
Construction	124,100	123,500	122,300	30,400	30,800	30,100	36,900	37,200	37,900
Construction of Buildings	21,300	20,900	21,800				6,800	6,800	7,000
Residential Building Construction	6,300	6,100	6,100						
Nonresidential Building Construction	15,000	14,800	15,700				6,200	6,300	6,100
Heavy & Civil Engineering Construction	38,800	39,100	39,500	8,700	8,500	8,800	12,600	12,800	13,300
Utility System Construction	19,900	19,700	19,700						
Specialty Trade Contractors	64,000	63,500	61,000	16,200	16,800	15,800	17,500	17,600	17,600
Manufacturing	143,300	144,200	137,200	32,000	32,200	32,200	24,800	24,900	24,700
Durable Goods	72,500	72,400	69,000	15,300	15,500	16,100			
Transportation Equipment Manufacturing	15,900	15,900	17,100	6,600	6,800	8,100			
Ship & Boat Building	10,900	11,000	11,700	5,400	5,500	6,000			
Nondurable Goods	70,800	71,800	68,200	16,700	16,700	16,100	16,800	16,800	16,900
Food Manufacturing	15,700	15,500	16,000						
Paper Manufacturing	7,100	7,100	7,100						
Petroleum & Coal Products Mfg. & Chemical Mfg.									
Petroleum & Coal Products Manufacturing	11,700	11,700	11,500						
Chemical Manufacturing	23,700	23,700	22,700	4,700	4,700	4,400	9,900	9,900	9,500
Basic Chemical Manufacturing	12,200	12,300	12,300				5,600	5,600	5,600
Service-Providing	1,583,500	1,581,800	1,562,700	456,300	456,600	445,800	293,800	294,900	297,900
Private Service-Providing	1,237,000	1,237,500	1,209,400	374,700	376,500	365,000	221,700	222,300	222,000
Trade, Transportation, & Utilities	369,300	369,600	363,800	103,200	103,900	102,300	64,300	64,600	64,200
Wholesale Trade	71,200	71,200	70,400	22,300	22,400	22,100	12,100	12,100	12,400
Merchant Wholesalers, Durable Goods	37,800	37,900	36,800	10,500	10,600	10,600			
Merchant Wholesalers, Nondurable Goods	24,100	24,000	24,800	7,800	7,800	7,700			
Retail Trade	216,800	217,300	215,400	56,100	56,800	55,800	40,400	40,800	40,100
Clothing & Clothing Accessories Stores, General Merchandise									
Motor Vehicle & Parts Dealers	25,800	25,800	25,900						
Building Material & Garden Equipment & Supplies Dealers	19,500	19,600	19,300						
Food & Beverage Stores	34,400	34,500	35,000						
Grocery Stores	30,200	30,200	30,500	8,000	7,600	8,100	5,500	5,500	5,600
Health & Personal Care Stores	15,500	15,400	15,400						
Gasoline Stations	18,700	18,600	18,500						
Clothing and Clothing Accessories Stores	17,700	17,700	18,000						
General Merchandise Stores	51,800	52,400	51,000	12,200	12,400	12,000	9,100	9,300	9,200
Department Stores	16,500	16,500	16,100				2,400	2,400	2,500
Transportation, Warehousing, & Utilities	81,300	81,100	78,000	24,800	24,700	24,400	11,800	11,700	11,700
Transportation and Warehousing	72,300	72,100	68,600						
Truck Transportation	16,300	16,200	16,600						
Support Activities for Transportation	20,400	20,400	19,300						
Information	28,500	29,300	25,300	8,900	9,100	6,200	5,200	5,300	5,000
Telecommunications	10,500	10,700	10,500						
Financial Activities	95,400	93,700	93,600	25,700	25,700	25,900	16,600	16,500	16,900
Finance & Insurance	65,400	64,200	62,900	18,500	18,500	18,200	11,800	11,700	12,100
Credit Intermediation & Related Activities	31,700	31,700	32,000	7,500	7,500	7,600			
Depository Credit Intermediation	22,700	22,600	22,900	5,800	5,800	5,800	4,300	4,300	4,300
Insurance Carriers & Related Activities	26,500	26,500	26,800						
Real Estate & Rental & Leasing	30,000	29,500	30,700						
Professional & Business Services	192,100	192,400	195,100	66,800	67,100	68,500	41,300	42,000	41,800
Professional, Scientific, & Technical Services	78,300	78,800	78,400	28,900	29,300	28,700	19,400	19,000	18,200
Legal Services	19,100	19,200	19,100	8,200	8,400	8,300			
Accounting, Tax Preparation, Bookkeeping & Payroll Services	9,200	9,400	9,300						
Architectural, Engineering, & Related Services	24,300	24,100	23,200						
Management of Companies & Enterprises	23,800	23,800	23,900	8,000	8,000	8,100			
Admin. & Support & Waste Mgmt. & Remediation Serv.	90,000	89,800	92,800	29,900	29,800	31,700	18,100	18,100	18,600
Administrative & Support Services	79,200	79,100	83,100	27,200	27,200	28,900			
Employment Services	29,100	28,000	29,600	10,000	9,500	10,100			
Services to Buildings & Dwellings	20,100	20,400	20,300						
Education & Health Services	284,900	282,500	270,400	77,900	77,600	74,000	48,800	48,000	48,700
Educational Services	35,600	33,600	34,400	19,000	18,600	18,500			
Colleges, Universities, & Professional Schools	16,200	16,900	18,200	9,800	10,000	10,100			
Health Care & Social Assistance	249,300	248,900	236,000	58,900	59,000	55,500	43,800	43,100	42,100
Ambulatory Health Care Services	91,300	91,000	86,400	21,900	21,900	21,200	18,300	18,200	17,500
Offices of Physicians	35,300	35,200	33,400						
Home Health Care Services	22,400	22,400	21,800						
Hospitals	68,400	68,900	65,500	18,700	18,800	18,100	11,700	11,800	11,500
Nursing & Residential Care Facilities	43,200	43,300	41,300						
Nursing Care Facilities	26,900	26,900	26,000						
Social Assistance	46,400	45,700	42,800						
Leisure & Hospitality	201,400	204,200	195,000	73,300	74,200	69,500	32,700	33,000	32,500
Arts, Entertainment, & Recreation	28,300	29,200	28,900	10,100	10,300	10,000			
Amusement, Gambling, & Recreation Industries	23,800	24,500	23,200	6,700	7,000	6,500			
Gambling Industries	10,100	10,200	10,500	2,100	2,100	2,100			
Accommodation & Food Services	173,100	175,000	166,100	63,200	63,900	59,500	27,300	27,100	27,300
Accommodation	29,300	29,700	27,400	13,400	13,700	13,200			
Food Services & Drinking Places	143,800	145,300	138,700	49,800	50,200	46,300	25,400	25,400	25,100
Other Services	65,400	65,800	66,200	18,900	18,900	18,600	12,800	12,900	12,900
Repair & Maintenance	19,700	19,700	19,200						
Automotive Repair & Maintenance	10,600	10,500	10,500						
Personal & Laundry Services	15,400	15,400	15,400						
Government	346,500	344,300	353,300	81,600	80,100	80,800	72,100	72,600	75,900
Federal Government	31,300	31,700	33,100	12,400	12,500	12,800	2,900	3,000	3,400
State Government	103,600	102,100	108,200	18,200	17,400	19,700	37,700	37,700	40,300
Local Government	211,600	210,500	212,000	51,000	50,200	48,300	31,500	31,900	32,200

LOUISIANA & MSAs NONFARM EMPLOYMENT

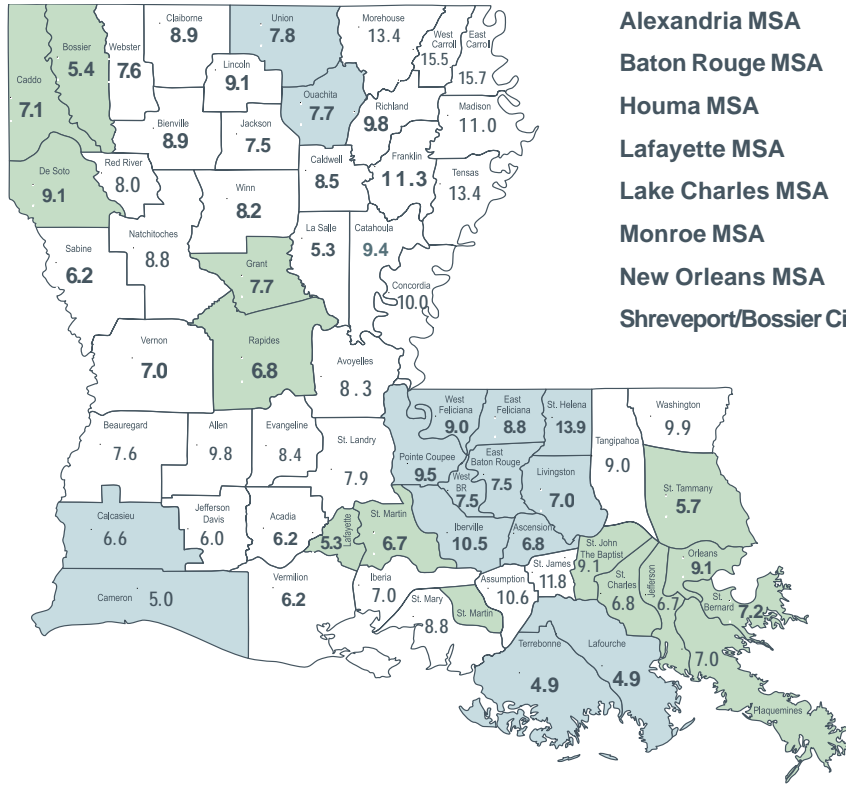
9

Not Seasonally Adjusted	SHREVEPORT-BOSSIER CITY MSA			LAFAYETTE MSA			LAKE CHARLES MSA		
	PREL	REV	REV	PREL	REV	REV	PREL	REV	REV
	AUG 2011	JULY 2011	AUG 2010	AUG 2011	JULY 2011	AUG 2010	AUG 2011	JULY 2011	AUG 2010
Total Nonfarm	181,100	181,000	178,200	150,100	148,600	147,300	90,400	91,100	88,100
Total Private	145,400	145,400	143,800	132,700	131,800	130,800	75,300	76,200	72,600
Goods-Producing	26,700	26,700	25,700	32,700	31,900	31,300	18,400	18,400	17,900
Mining & Logging	6,600	6,600	6,200	16,400	16,000	15,400	1,100	1,100	1,100
Oil & Gas Extraction									
Crude Petroleum & Natural Gas Extraction									
Support Activities for Mining				13,900	13,600	13,400			
Drilling Oil & Gas Wells									
Construction	9,700	9,600	9,400	6,000	5,800	6,300	7,900	7,800	7,700
Construction of Buildings									
Residential Building Construction									
Nonresidential Building Construction									
Heavy & Civil Engineering Construction							3,300	3,300	3,300
Utility System Construction									
Specialty Trade Contractors									
Manufacturing	10,400	10,500	10,100	10,300	10,100	9,600	9,400	9,500	9,100
Durable Goods									
Transportation Equipment Manufacturing	1,000	1,000	1,100						
Ship & Boat Building									
Nondurable Goods							7,100	7,100	7,000
Food Manufacturing									
Paper Manufacturing									
Petroleum & Coal Products Mfg. & Chemical Mfg.							6,600	6,600	6,400
Petroleum & Coal Products Manufacturing									
Chemical Manufacturing									
Basic Chemical Manufacturing									
Service-Providing	154,400	154,300	152,500	117,400	116,700	116,000	72,000	72,700	70,200
Private Service-Providing	118,700	118,700	118,100	100,000	99,900	99,500	56,900	57,800	54,700
Trade, Transportation, & Utilities	34,400	34,000	33,500	29,100	29,000	28,700	16,400	16,500	16,200
Wholesale Trade	6,800	6,700	6,600	7,800	7,700	7,600			
Merchant Wholesalers, Durable Goods									
Merchant Wholesalers, Nondurable Goods									
Retail Trade	21,100	20,900	20,700	17,400	17,400	17,400	10,000	10,000	10,000
Clothing & Clothing Accessories Stores, General Merchandise							3,300	3,400	3,400
Motor Vehicle & Parts Dealers									
Building Material & Garden Equipment & Supplies Dealers									
Food & Beverage Stores									
Grocery Stores									
Health & Personal Care Stores									
Gasoline Stations									
Clothing and Clothing Accessories Stores									
General Merchandise Stores	4,600	4,600	4,500	3,600	3,700	3,600			
Department Stores									
Transportation, Warehousing, & Utilities	6,500	6,400	6,200	3,900	3,900	3,700			
Transportation and Warehousing									
Truck Transportation									
Support Activities for Transportation									
Information	4,800	4,900	4,800	2,700	2,700	2,700			
Telecommunications									
Financial Activities	7,200	7,100	7,000	8,400	8,400	8,500			
Finance & Insurance									
Credit Intermediation & Related Activities									
Depository Credit Intermediation									
Insurance Carriers & Related Activities									
Real Estate & Rental & Leasing									
Professional & Business Services	15,500	16,100	16,500	17,300	17,300	17,600	6,800	6,800	6,900
Professional, Scientific, & Technical Services				8,200	8,300	7,900			
Legal Services									
Accounting, Tax Preparation, Bookkeeping & Payroll Services									
Architectural, Engineering, & Related Services									
Management of Companies & Enterprises									
Admin. & Support & Waste Mgmt. & Remediation Serv.	9,800	9,800	10,200						
Administrative & Support Services									
Employment Services									
Services to Buildings & Dwellings									
Education & Health Services	26,500	26,300	26,000	22,600	22,500	22,100			
Educational Services									
Colleges, Universities, & Professional Schools									
Health Care & Social Assistance	25,500	25,400	24,900	20,700	20,600	20,000			
Ambulatory Health Care Services									
Offices of Physicians									
Home Health Care Services									
Hospitals	9,800	9,800	9,600	5,200	5,300	5,300	3,500	3,500	3,500
Nursing & Residential Care Facilities									
Nursing Care Facilities									
Social Assistance									
Leisure & Hospitality	22,100	22,200	22,100	15,100	15,200	15,000	11,900	12,000	11,600
Arts, Entertainment, & Recreation	5,600	5,800	6,000						
Amusement, Gambling, & Recreation Industries	5,400	5,700	5,700						
Gambling Industries	4,200	4,200	4,500						
Accommodation & Food Services	16,500	16,400	16,100	13,200	13,200	13,000	10,400	10,400	10,200
Accommodation									
Food Services & Drinking Places	13,500	13,400	13,200	12,200	12,200	12,000			
Other Services	8,200	8,100	8,200	4,800	4,800	4,900			
Repair & Maintenance									
Automotive Repair & Maintenance									
Personal & Laundry Services									
Government	35,700	35,600	34,400	17,400	16,800	16,500	15,100	14,900	15,500
Federal Government	4,700	4,900	4,800	1,100	1,100	1,200	600	600	700
State Government	11,500	11,500	10,600	5,600	4,900	5,100	3,700	3,700	3,900
Local Government	19,500	19,200	19,000	10,700	10,800	10,200	10,800	10,600	10,900

	MONROE MSA			HOUMA-BAYOU CANE- THIBODAU MSA			ALEXANDRIA MSA		
	PREL	REV	REV	PREL	REV	REV	PREL	REV	REV
	AUG 2011	JULY 2011	AUG 2010	AUG 2011	JULY 2011	AUG 2010	AUG 2011	JULY 2011	AUG 2010
<i>Not Seasonally Adjusted</i>									
Total Nonfarm	75,300	75,100	74,600	95,900	95,200	92,800	65,800	65,600	63,300
Total Private	61,600	61,500	61,100	82,800	81,800	79,300	51,300	51,200	48,600
Goods-Producing	10,500	10,500	10,200	20,700	20,700	20,000	8,600	8,600	8,400
Mining & Logging				5,900	5,800	5,700			
Oil & Gas Extraction									
Crude Petroleum & Natural Gas Extraction									
Support Activities for Mining				4,800	4,800	4,800			
Drilling Oil & Gas Wells									
Construction				6,000	6,000	5,800			
Construction of Buildings									
Residential Building Construction									
Nonresidential Building Construction									
Heavy & Civil Engineering Construction									
Utility System Construction									
Specialty Trade Contractors									
Manufacturing	6,900	6,900	6,700						
Durable Goods									
Transportation Equipment Manufacturing									
Ship & Boat Building									
Nondurable Goods	5,100	5,200	5,000						
Food Manufacturing									
Paper Manufacturing									
Petroleum & Coal Products Mfg. & Chemical Mfg.									
Petroleum & Coal Products Manufacturing									
Chemical Manufacturing									
Basic Chemical Manufacturing									
Service-Providing	64,800	64,600	64,400	75,200	74,500	72,800	57,200	57,000	54,900
Private Service-Providing	51,100	51,000	50,900	62,100	61,100	59,300	42,700	42,600	40,200
Trade, Transportation, & Utilities	13,800	13,800	13,700	25,400	25,100	23,700	11,600	11,600	11,500
Wholesale Trade									
Merchant Wholesalers, Durable Goods									
Merchant Wholesalers, Nondurable Goods									
Retail Trade	9,300	9,400	9,400	10,700	10,700	10,600	7,700	7,700	7,700
Clothing & Clothing Accessories Stores, General Merchandise	3,400	3,400	3,400						
Motor Vehicle & Parts Dealers									
Building Material & Garden Equipment & Supplies Dealers									
Food & Beverage Stores									
Grocery Stores									
Health & Personal Care Stores									
Gasoline Stations									
Clothing and Clothing Accessories Stores									
General Merchandise Stores									
Department Stores									
Transportation, Warehousing, & Utilities									
Transportation and Warehousing									
Truck Transportation									
Support Activities for Transportation				4,500	4,500	4,400			
Information									
Telecommunications									
Financial Activities									
Finance & Insurance									
Credit Intermediation & Related Activities									
Depository Credit Intermediation									
Insurance Carriers & Related Activities									
Real Estate & Rental & Leasing									
Professional & Business Services	7,200	7,200	7,300						
Professional, Scientific, & Technical Services									
Legal Services									
Accounting, Tax Preparation, Bookkeeping & Payroll Services									
Architectural, Engineering, & Related Services									
Management of Companies & Enterprises									
Admin. & Support & Waste Mgmt. & Remediation Serv.									
Administrative & Support Services				5,200	5,200	4,900			
Employment Services				3,600	3,600	3,300			
Services to Buildings & Dwellings									
Education & Health Services	13,400	13,300	13,100						
Educational Services									
Colleges, Universities, & Professional Schools									
Health Care & Social Assistance									
Ambulatory Health Care Services									
Offices of Physicians									
Home Health Care Services									
Hospitals	3,600	3,600	3,600				4,400	4,400	4,200
Nursing & Residential Care Facilities									
Nursing Care Facilities									
Social Assistance									
Leisure & Hospitality	7,000	7,000	6,900	7,800	7,800	7,700			
Arts, Entertainment, & Recreation									
Amusement, Gambling, & Recreation Industries									
Gambling Industries									
Accommodation & Food Services									
Accommodation									
Food Services & Drinking Places									
Other Services									
Repair & Maintenance									
Automotive Repair & Maintenance									
Personal & Laundry Services									
Government	13,700	13,600	13,500	13,100	13,400	13,500	14,500	14,400	14,700
Federal Government	600	600	700	400	400	600	3,000	3,000	2,900
State Government	4,000	4,000	4,100	2,600	2,700	2,900	4,500	4,500	4,800
Local Government	9,100	9,000	8,700	10,100	10,300	10,000	7,000	6,900	7,000

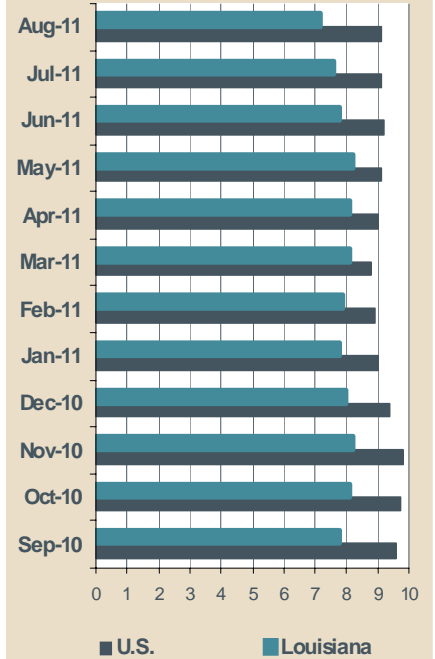
Louisiana Unemployment Rates (Not Seasonally Adjusted)

Aug 2011



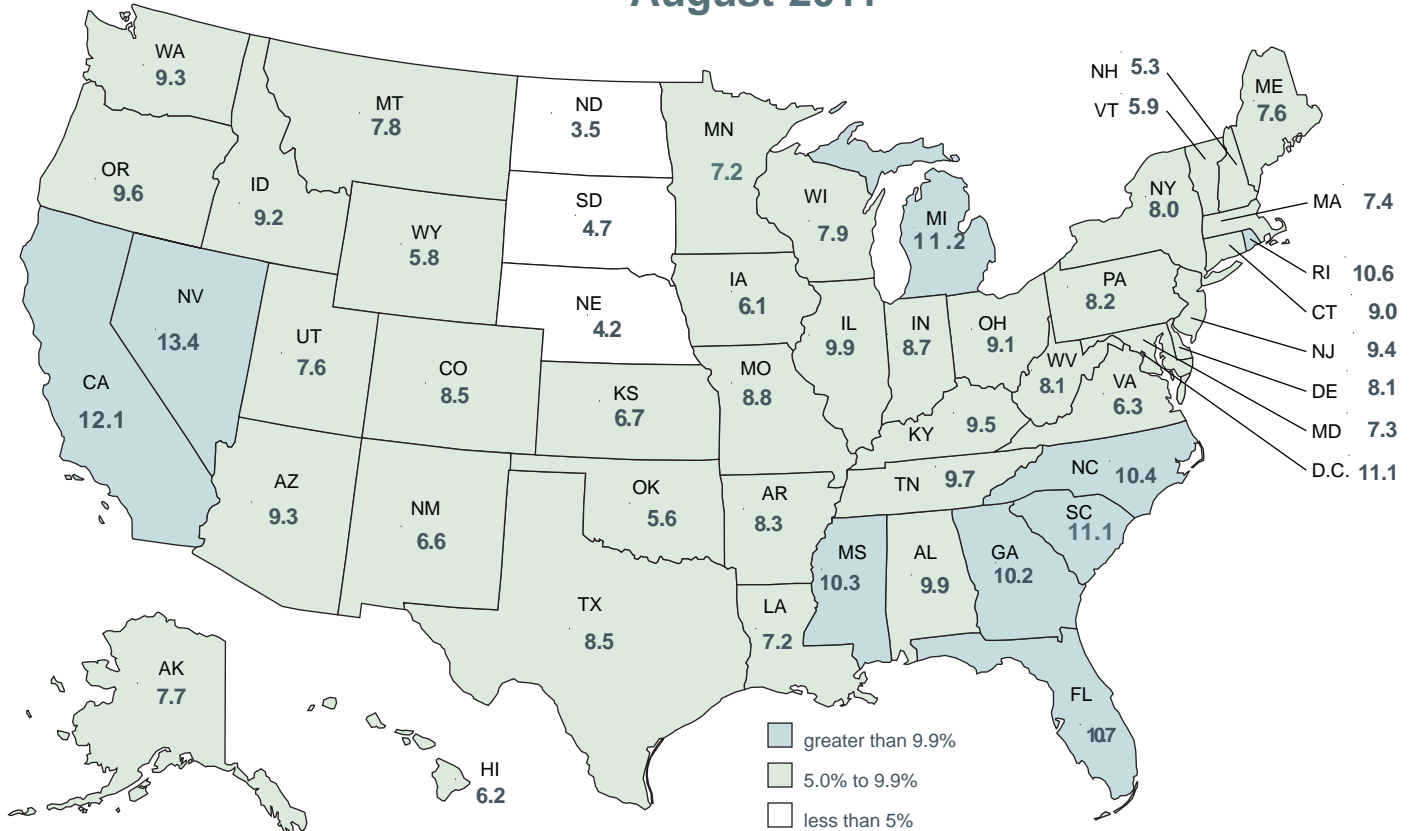
Statewide	7.3 %
Alexandria MSA	6.9 %
Baton Rouge MSA	7.6 %
Houma MSA	4.9 %
Lafayette MSA	5.6 %
Lake Charles MSA	6.6 %
Monroe MSA	7.7 %
New Orleans MSA	7.3 %
Shreveport/Bossier City MSA	6.7 %

United States - Louisiana Unemployment Rates (Seasonally Adjusted)



United States Unemployment Rates (Seasonally Adjusted)

August 2011



United States Rate 9.1

CIVILIAN LABOR FORCE (Not Seasonally Adjusted)

Area	Preliminary Aug 2011			Revised July 2011			Revised Aug 2010		
	Employed	Unemployed	Rate	Employed	Unemployed	Rate	Employed	Unemployed	Rate
UNITED STATES	140,335,000	14,008,000	9.1	140,384,000	14,428,000	9.3	139,919,000	14,759,000	9.5
LOUISIANA	1,897,998	149,311	7.3	1,916,195	163,513	7.9	1,929,686	172,143	8.2
ALEXANDRIA MSA	65,004	4,821	6.9	65,328	5,429	7.7	64,623	5,553	7.9
Grant	8,135	680	7.7	8,176	756	8.5	8,087	752	8.5
Rapides	56,869	4,141	6.8	57,152	4,673	7.6	56,536	4,801	7.8
BATON ROUGE MSA	339,007	27,899	7.6	343,991	30,706	8.2	352,312	31,924	8.3
Ascension	46,408	3,367	6.8	47,090	3,711	7.3	48,229	3,981	7.6
East Baton Rouge	195,805	15,928	7.5	198,684	17,552	8.1	203,490	18,069	8.2
East Feliciana	7,202	699	8.8	7,308	748	9.3	7,484	804	9.7
Iberville	10,774	1,263	10.5	10,932	1,410	11.4	11,196	1,407	11.2
Livingston	53,008	3,985	7.0	53,787	4,426	7.6	55,088	4,634	7.8
Pointe Coupee	8,480	886	9.5	8,605	946	9.9	8,813	903	9.3
St. Helena	3,613	584	13.9	3,667	623	14.5	3,755	674	15.2
West Baton Rouge	9,516	771	7.5	9,656	847	8.1	9,890	1,002	9.2
West Feliciana	4,201	417	9.0	4,263	443	9.4	4,366	450	9.3
HOUMA-BAYOU CANE- THIBODAUX MSA	99,179	5,150	4.9	99,206	5,685	5.4	98,826	6,134	5.8
Lafourche	46,831	2,434	4.9	46,844	2,675	5.4	46,665	2,827	5.7
Terrebonne	52,348	2,716	4.9	52,362	3,010	5.4	52,161	3,307	6.0
LAFAYETTE MSA	128,270	7,551	5.6	128,282	8,261	6.1	129,200	9,037	6.5
Lafayette	106,066	5,966	5.3	106,076	6,517	5.8	106,835	7,114	6.2
St. Martin	22,204	1,585	6.7	22,206	1,744	7.3	22,365	1,923	7.9
LAKE CHARLES MSA	88,169	6,192	6.6	89,713	6,558	6.8	88,189	7,372	7.7
Calcasieu	85,271	6,038	6.6	86,764	6,373	6.8	85,291	7,147	7.7
Cameron	2,898	154	5.0	2,949	185	5.9	2,898	225	7.2
MONROE MSA	73,299	6,098	7.7	73,890	6,635	8.2	74,816	7,012	8.6
Ouachita	64,345	5,343	7.7	64,864	5,813	8.2	65,677	6,124	8.5
Union	8,954	755	7.8	9,026	822	8.3	9,139	888	8.9
NEW ORLEANS-METairie- KENNER MSA	501,106	39,514	7.3	507,433	43,074	7.8	503,921	44,799	8.2
Jefferson	198,535	14,335	6.7	201,042	15,477	7.1	199,651	16,202	7.5
New Orleans City/Orleans	134,756	13,538	9.1	136,458	14,678	9.7	135,513	15,411	10.2
Plaquemines	7,483	566	7.0	7,577	616	7.5	7,525	556	6.9
St. Bernard	17,010	1,325	7.2	17,225	1,491	8.0	17,106	1,392	7.5
St. Charles	22,272	1,634	6.8	22,553	1,835	7.5	22,397	1,859	7.7
St. John Baptist	18,758	1,888	9.1	18,995	2,146	10.2	18,864	2,302	10.9
St. Tammany	102,292	6,229	5.7	103,584	6,831	6.2	102,867	7,078	6.4
SHREVEPORT-BOSSIER CITY MSA	173,870	12,480	6.7	175,807	13,331	7.0	168,293	14,298	7.8
Bossier	51,570	2,938	5.4	52,144	3,313	6.0	49,916	3,428	6.4
Caddo	111,639	8,472	7.1	112,882	9,135	7.5	108,058	9,840	8.3
De Soto	10,661	1,070	9.1	10,780	883	7.6	10,319	1,029	9.1
NON-MSA PARISHES									
Acadia (Crowley) ¹	23,606	1,554	6.2	23,740	1,691	6.6	24,717	1,933	7.3
Allen	7,827	848	9.8	7,880	924	10.5	8,040	963	10.7
Assumption (Pierre Part) ¹	9,027	1,071	10.6	9,089	1,182	11.5	9,436	1,169	11.0
Avoyelles	14,820	1,349	8.3	14,887	1,493	9.1	15,591	1,572	9.2
Beauregard (DeRidder) ¹	12,867	1,063	7.6	12,904	1,213	8.6	13,593	1,258	8.5
Bienville	5,815	567	8.9	5,863	601	9.3	6,045	622	9.3
Caldwell	3,979	370	8.5	4,009	423	9.5	4,196	452	9.7
Catahoula	3,814	398	9.4	3,795	468	11.0	3,960	467	10.5
Claiborne	5,901	577	8.9	5,924	603	9.2	6,199	658	9.6
Concordia (Natchez, MS-LA) ¹	6,337	708	10.0	6,366	875	12.1	6,571	763	10.4
East Carroll	2,251	419	15.7	2,240	459	17.0	2,573	492	16.1
Evangeline	11,642	1,068	8.4	11,719	1,188	9.2	11,879	1,218	9.3
Franklin	6,615	845	11.3	6,656	931	12.3	7,072	960	12.0
Iberia (New Iberia) ¹	30,451	2,285	7.0	30,615	2,510	7.6	31,161	2,757	8.1
Jackson (Ruston) ¹	5,773	470	7.5	5,856	516	8.1	6,088	498	7.6
Jefferson Davis (Jennings) ¹	13,384	859	6.0	13,486	942	6.5	13,957	1,035	6.9
La Salle	6,664	372	5.3	6,700	411	5.8	6,603	449	6.4
Lincoln (Ruston) ¹	17,146	1,723	9.1	17,393	1,904	9.9	18,081	1,929	9.6
Madison (Tallulah) ¹	3,878	478	11.0	3,953	538	12.0	4,171	535	11.4
Morehouse (Bastrop) ¹	9,213	1,422	13.4	9,298	1,562	14.4	9,861	1,711	14.8
Natchitoches (Natchitoches) ¹	14,933	1,434	8.8	15,089	1,532	9.2	16,105	1,563	8.8
Red River	3,427	296	8.0	3,434	313	8.4	3,431	351	9.3
Richland	7,989	868	9.8	8,016	949	10.6	8,403	956	10.2
Sabine	8,950	595	6.2	9,045	681	7.0	9,156	726	7.3
St. James	8,220	1,103	11.8	8,279	1,172	12.4	8,538	1,195	12.3
St. Landry (Opelousas, Eunice) ¹	34,879	2,982	7.9	35,144	3,253	8.5	35,760	3,477	8.9
St. Mary (Morgan City) ¹	20,198	1,961	8.8	20,314	2,158	9.6	21,138	2,279	9.7
Tangipahoa (Hammond) ¹	47,606	4,701	9.0	47,467	5,102	9.7	49,787	5,347	9.7
Tensas	1,494	231	13.4	1,481	273	15.6	1,735	308	15.1
Vermilion (Abbeville) ¹	21,945	1,455	6.2	22,061	1,606	6.8	22,778	1,843	7.5
Vernon (Fort Polk South) ¹	18,594	1,409	7.0	18,766	1,856	9.0	19,846	1,822	8.4
Washington (Bogalusa) ¹	13,531	1,482	9.9	13,559	1,593	10.5	14,163	1,701	10.7
Webster (Mindon) ¹	18,038	1,494	7.6	18,184	1,653	8.3	18,679	1,793	8.8
West Carroll	3,370	616	15.5	3,375	685	16.9	3,784	631	14.3
Winn	5,910	530	8.2	5,957	574	8.8	6,408	579	8.3

¹In addition to the eight (8) Metropolitan Statistical Areas (MSAs) in Louisiana, there are seventeen (17) Micropolitan Statistical Areas (MCs): Jackson and Lincoln Parishes combine to constitute one MC area. Civilian Labor Force can be derived by adding employed and unemployed. For related information or data, please visit: www.bls.gov/lau/home.htm.

LOUISIANA - PRIVATE EMPLOYMENT (Not Seasonally Adjusted)

	Avg. Weekly Earnings (\$)			Avg. Weekly Hours			Avg. Hourly Earnings (\$)		
	AUG	JULY	AUG	AUG	JULY	AUG	AUG	JULY	AUG
	2011	2011	2010	2011	2011	2010	2011	2011	2010
Total Private	745.00	752.50	729.76	36.2	36.3	37.1	20.58	20.73	19.67
Goods-Producing	1,010.52	1,021.28	977.53	42.0	41.6	41.9	24.06	24.55	23.33
Private Service-Providing	675.96	682.30	664.45	34.7	34.9	35.8	19.48	19.55	18.56
Construction	921.86	902.32	875.50	41.6	40.7	41.2	22.16	22.17	21.25
Manufacturing	1,009.42	1,048.13	998.90	41.1	41.2	41.9	24.56	25.44	23.84
Trade, Transportation, and Utilities	695.15	729.00	683.72	36.8	37.5	37.9	18.89	19.44	18.04
Financial Activities	720.48	726.68	720.45	37.1	37.4	37.7	19.42	19.43	19.11
Professional and Business Services	942.48	941.68	986.95	38.5	38.8	40.8	24.48	24.27	24.19
Education and Health Services	629.97	621.17	569.91	33.0	33.2	33.0	19.09	18.71	17.27
Leisure and Hospitality	315.74	312.84	327.70	26.6	26.4	27.4	11.87	11.85	11.96

METROPOLITAN STATISTICAL AREA (MSA) PRIVATE EMPLOYMENT (Not Seasonally Adjusted)

	Avg. Weekly Earnings (\$)			Avg. Weekly Hours			Avg. Hourly Earnings (\$)		
	AUG	JULY	AUG	AUG	JULY	AUG	AUG	JULY	AUG
	2011	2011	2010	2011	2011	2010	2011	2011	2010
Alexandria	834.10	811.58	607.53	38.0	37.4	35.8	21.95	21.70	16.97
Baton Rouge	765.80	752.54	758.94	35.0	35.1	36.4	21.88	21.44	20.85
Houma	873.18	902.52	824.14	40.5	41.4	40.9	21.56	21.80	20.15
Lafayette	767.11	754.83	712.99	38.9	38.2	37.0	19.72	19.76	19.27
Lake Charles	860.10	891.00	797.23	39.4	40.5	38.2	21.83	22.00	20.87
Monroe	528.40	515.51	549.71	32.2	32.3	34.4	16.41	15.96	15.98
New Orleans	852.87	865.90	857.15	36.2	36.2	38.3	23.56	23.92	22.38
Shreveport	670.09	646.45	667.15	35.7	35.0	36.9	18.77	18.47	18.08

AVERAGE HOURS AND EARNINGS FOR PRODUCTION WORKERS IN MANUFACTURING AND SELECTED NONMANUFACTURING INDUSTRIES (Not Seasonally Adjusted)

	Avg. Weekly Earnings (\$)			Avg. Weekly Hours			Avg. Hourly Earnings (\$)		
	AUG	JULY	AUG	AUG	JULY	AUG	AUG	JULY	AUG
	2011	2011	2010	2011	2011	2010	2011	2011	2010
Louisiana									
Mining & Logging	1,123.34	1,114.20	988.83	46.4	45.0	41.6	24.21	24.76	23.77
Manufacturing	871.94	902.30	889.95	41.6	41.6	42.5	20.96	21.69	20.94
Durable Goods	923.18	911.64	878.10	43.2	42.6	42.4	21.37	21.40	20.71
Nondurable Goods	817.15	894.42	902.69	39.9	40.6	42.6	20.48	22.03	21.19
New Orleans MSA									
Ship and Boat Building	914.60	871.34	791.32	39.8	38.2	36.5	22.98	22.81	21.68

The 105,700 production workers in all manufacturing earned an average of \$871.94 per week in Aug. 2011. Average weekly hours were 41.6, and average hourly earnings were \$20.96.

LOUISIANA UNEMPLOYMENT INSURANCE by CLAIMANT'S PARISH of RESIDENCE

WEEK ENDING - August 13, 2011

RLMA/PARISH	INITIAL CLAIMS	WEEKS CLAIMED	RLMA/PARISH	INITIAL CLAIMS	WEEKS CLAIMED	RLMA/PARISH	INITIAL CLAIMS	WEEKS CLAIMED
RLMA 1	951	12,485	RLMA 4	417	5,010	RLMA 7	466	5,580
JEFFERSON	372	4,715	ACADIA	44	328	BIENVILLE	15	187
ORLEANS	333	4,624	EVANGELINE	20	282	BOSSIER	57	735
PLAQUEMINES	16	153	IBERIA	33	639	CADDO	225	2,645
ST. BERNARD	0	1	LAFAYETTE	144	1,590	CLAIBORNE	15	173
ST. CHARLES	32	459	ST. LANDRY	74	846	DESOTO	15	205
ST. JAMES	24	376	ST. MARTIN	38	406	LINCOLN	30	518
ST. JOHN	42	656	ST. MARY	43	590	NATCHITOCHEs	48	490
ST. TAMMANY	132	1,501	VERMILION	21	329	RED RIVER	4	68
RLMA 2	815	10,438	RLMA 5	245	2,408	RLMA 8	288	3,382
ASCENSION	86	984	ALLEN	17	199	CALDWELL	8	87
E. BATON ROUGE	375	4,907	BEAUREGARD	32	365	EAST CARROLL	7	110
EAST FELICIANA	17	224	CALCASIEU	180	1,635	FRANKLIN	27	238
IBERVILLE	37	431	CAMERON	1	13	JACKSON	10	131
LIVINGSTON	91	1,132	JEFF. DAVIS	15	196	MADISON	8	124
POINTE COUPEE	17	296	RLMA 6	175	3,003	MOREHOUSE	41	413
ST. HELENA	6	99	AVOYELLES	20	376	OUACHITA	141	1,613
TANGIPAHOA	144	1,589	CATAHOULA	10	113	RICHLAND	26	249
WASHINGTON	26	429	CONCORDIA	5	181	TENSAS	1	67
W. BATON ROUGE	13	245	GRANT	15	162	UNION	13	204
WEST FELICIANA	3	102	LASALLE	7	79	WEST CARROLL	6	146
RLMA 3	125	1,374	RAPIDES	85	1,402			
ASSUMPTION	38	288	VERNON	27	536			
LAFOURCHE	33	486	WINN	6	154			
TERREBONNE	54	600						

RLMA = REGIONAL LABOR MARKET AREA

THE ABOVE FIGURES INCLUDE REGULAR UNEMPLOYMENT INSURANCE (UI), UNEMPLOYMENT CLAIMS for FEDERAL EMPLOYEES (UCFE), and UNEMPLOYMENT CLAIMS for EX-SERVICE MEMBERS (UCX) DATA ONLY.

Labor Market Questions and Answers!

- **When will the Louisiana Labor Force Diversity Data 2011 product be available on the Louisiana Workforce Commission's website www.laworks.net?**

The Louisiana Labor Force Diversity Data 2011 file is now available for downloading at the following location. Begin on the LWC home page, select Labor Market Information, and then select Louisiana Labor Force Diversity Data.

www.laworks.net/Downloads/Employment/AffirmativeActionPublication_2011.pdf

This product provides population and labor force data by sex, race, and ethnic group for the state, metropolitan statistical areas, and individual parishes. The labor force also includes data by occupation, sex, and race. Unemployment Insurance Claimant Characteristics are included with details by sex, race, age, ethnicity, industry, and occupation for claimants filing UI claims for continued weeks of unemployment benefits during the week of the 19th of the month.

- **Are there any free conferences in Louisiana concerning Growing Green Jobs?**

Yes, the Louisiana Workforce Commission invites you to attend the Growing Green Regional Conference in your area. Come to one of our regional conferences to learn the results of a comprehensive study of Louisiana's green economy.

The following conferences are still available at the time of publication.

Central and North Louisiana: Thursday, Sept. 22 in Shreveport.

New Orleans and Houma: Thursday, Sept. 27 in New Orleans.

Use the link below to register for the free event in your area.

www.laworks.net/Green/GG_Main.asp

Glossary & Technical Notes

Average Hourly Earnings/Average Weekly Earnings/ Average Weekly Hours (CES/BLS) - average total money earnings, in the survey week (i.e., the week that includes the twelfth of the month), of production workers plus nonsupervisory workers not in production, including overtime, paid vacation and sick leave.

Civilian Labor Force - that portion of the population, age sixteen or older, which is employed or unemployed and actively seeking employment during the reference week of the twelfth of the month.

Employed - the members of the labor force who worked for pay or profit, or had a job from which they were temporarily absent because of illness, vacation, labor dispute, or other reasons not reflecting a shortage of work, or who worked fifteen hours or more as unpaid workers in an enterprise operated by a member of the family.

Unemployed - the members of the labor force who did not work but were seeking work or were awaiting recall from layoffs or the beginning of a new job within thirty days.

Unemployment Rate - the number of unemployed persons expressed as a percentage of the labor force.

Continued Claim - each week claimed subsequent to the filing of the initial claim for a week of unemployment compensation.

Current Employment Statistics (CES) - estimates of nonfarm employment and production workers hours and earnings by industry. They are produced as part of a nationwide program, in cooperation with the Bureau of Labor Statistics (BLS), for the state and each metropolitan statistical area (MSA) from a sample of employing establishments.

Current Population Survey (CPS) - a monthly household survey of the U.S. population conducted for the Bureau of Labor Statistics (BLS) by the Bureau of Census, of 56,000 selected households. Respondents are interviewed to obtain information on the employment status of each household member age 16 and over, during the reference week of the twelfth.

Durable Goods - items with a normal life expectancy of three years or more. Automobiles, furniture, household appliances, and mobile homes are examples.

Extended Layoff Event - Fifty or more initial claims for unemployment insurance benefits from an establishment during a 5-week period, with at least 50 workers separated for more than 30 days.

Initial Claims - a new claim, filed to open a claim for unemployment compensation.

Metropolitan Statistical Area (MSA) - a geographical area comprised of a parish generally containing a central city (or twin cities) of 50,000 inhabitants or more and contiguous parishes that are socially and economically integrated with the central city.

Micropolitan Statistical Area (MC) - a geographical area comprised of a parish containing a central city of at least 10,000 but less than 50,000 inhabitants and contiguous parishes that are socially and economically integrated with the central city.

NAICS (North American Industry Classification System) - an industry classification system that groups establishments into industries based on the activities in which they are primarily engaged.

Nonfarm Employment - employment by place of work that does not include the self employed, unpaid family workers, domestics, or agriculture workers. All estimates of nonfarm employment in this publication are in cooperation with the U.S. Department of Labor Bureau of Labor Statistics and include all full-time and part-time workers who were employed during the pay period including the twelfth of the month.

Nondurable Goods - items that generally last for only a short period of time (less than three years). Food, beverages, apparel, and gasoline are common examples.

Seasonally Adjusted - monthly data that is adjusted to minimize the changes in any time series which result from normal annual occurrences such as Christmas, summer vacations, and weather patterns.

Separation - The release of persons from an employer as part of a mass layoff event. Such releases involve both persons subject to recall and those who are terminated by the establishment.

Subsector - refers to the three-digit NAICS code, which will fall under the particular sector. Example: If Manufacturing (31-33) is the industry sector, then Food manufacturing (311), Paper manufacturing (322), Chemical manufacturing (325), Transportation equipment manufacturing (336), are some of the subsectors of manufacturing.

Supersector - refers to these five categories: Total Nonfarm, Total Private, Goods-Producing, Service-Providing, and Private Service-Providing.

Summary Industry Sector - a combination of industry sectors. A summary sector may or may not be published. The summary industry sectors are Mining & Logging; Construction; Manufacturing; Trade, Transportation, & Utilities; Information; Financial Activities; Professional & Business Services; Education & Health Services; Leisure & Hospitality; Other Services; and Government.

Industry Sector - 20 industry sectors based on two-digit NAICS code. They are Agriculture, Forestry, Fishing and Hunting (11), Mining (21), Utilities (22), Construction (23), Manufacturing (31-33), Wholesale Trade (42), Retail Trade (44-45), Transportation and Warehousing (48-49), Information (51), Finance and Insurance (52), Real Estate and Rental and Leasing (53), Professional and Technical Services (54), Management of Companies and Enterprises (55), Administrative and Waste Services (56), Educational Services (61), Health Care and Social Assistance (62), Arts, Entertainment, and Recreation (71), Accommodation and Food Services (72), Other Services (81), and Public Administration (92).

Constraints of the monthly civilian labor force and nonfarm employment estimates:

The civilian labor force estimates are derived by a monthly survey of approximately 750 households throughout Louisiana following the Bureau of Labor Statistics (BLS) methodology. The US Census Bureau conducts the survey by calling randomly selected households and providing BLS with survey results. Households are asked for the number of residents who are sixteen and over and whether they were working or actively looking for work during the week of the twelfth of the month. Responses to these questions become part of the formula to determine the number of people employed and the number of individuals unemployed for the state, MSAs, and each parish every month.

The nonfarm employment estimates are derived from responses received from the monthly BLS survey of 2,757 businesses across the state surveyed directly by this agency, and an additional 2,500 businesses that respond directly to BLS with their employment data. Responses capture employment activity during the twelfth of each month. This survey relies on responses from these businesses to produce industry employment levels for the state and all metropolitan statistical areas.

Both data sets are comparable with estimates for the U.S., all 50 states, and 270 metropolitan areas across the U.S.

LABOR MARKET INFORMATION WEB LINKS

Civilian Labor Force - LAUS (Local Area Unemployment Statistics) –

Employment, Unemployment and Unemployment Insurance Rate

LA <http://www.voshost.com/altentry.asp?action=lmiguest>

Left menu: Historical Data Analysis – Employment and Wage Data – Labor Force Data – Labor Force Employment and Unemployment (LAUS)

States <http://data.bls.gov/cgi-bin/dsrv?la>

US <http://data.bls.gov/pdq/querytool.jsp?survey=ln>

Consumer Price Index (US) <http://data.bls.gov/cgi-bin/surveymost?cu>

Download Louisiana Workforce Commission's Labor Market Information Products

LA http://www.laworks.net/Downloads/Downloads_LMI.asp

Employment and Wage Data – Quarterly Census of Employment and Wages (QCEW)

LA <http://www.voshost.com/altentry.asp?action=lmiguest>

Left menu: Historical Data Analysis – Employment and Wage Data – Industry Data – Quarterly Census of Employment and Wages (QCEW)

States & US <http://data.bls.gov/cgi-bin/dsrv?en>

Mass Layoff Statistics (MLS) <http://stats.bls.gov/mls/>

NAICS (North American Industry Classification System) Codes Look-Up Table

<http://www.census.gov/eos/www/naics>

Nonfarm Employment, Hours and Earnings - CES (Current Employment Statistics)

LA <http://www.voshost.com/altentry.asp?action=lmiguest>

Left menu: Historical Data Analysis – Employment and Wage Data – Industry Data – Current Employment Statistics (CES) – select Show Earnings Data under table

States <http://data.bls.gov/cgi-bin/dsrv?sm>

US <http://data.bls.gov/cgi-bin/dsrv?ce>

Unemployment Insurance Claimants Data (by Occupation) - Unemployment Insurance (UI)

LA <http://www.voshost.com/altentry.asp?action=lmiguest>

Left menu: Historical Data Analysis – Employment and Wage Data – Labor Force Data – Unemployment Insurance Claimants

Unemployment Insurance Claims Data (by Region, Parish, Industry) - UI

LA http://www.laworks.net/LaborMarketInfo/LMI_UIClaimsReportMenu.asp

States & US <http://ows.doleta.gov/unemploy/claims.asp>

Unemployment Rates for all States - LAUS

States <http://www.bls.gov/web/laumstrk.htm>



Office of Occupational Information Services
Research & Statistics Division
Post Office Box 94094
Baton Rouge, LA 70804-9094

Data for: 8/2011



Workforce At A Glance is published monthly by the Louisiana Workforce Commission. The material in this publication is not copyrighted and may be reproduced; however, the LWC would appreciate credit for the material used and a copy of the reprint.

LMI Staff:

Patty Granier, Manager
Ramona Robichaux, Supervisor
Ronald Smith, Layout and Design
Karen Clark, Jonathan Helis,
and Tequila Perkins

Contributors:

Natalie Foster-Lawrence, Mark Jones, Tara Robinson,
Helen Hilliard, and Karen Clark

Contact Us:

Phone (225) 342-3141; Fax (225) 219-7759
Toll Free (888) 302-7662;
Email OOIS@ldol.state.la.us

Bobby Jindal, Governor
State of Louisiana

Curt Eysink, Executive Director
Louisiana Workforce Commission

Raj Jindal,
Information Technology Director

Visit our website:
www.laworks.net