

Louisiana Workforce

at a glance

www.laworks.net 5-27-11 Updated Revised March 2011 Civilian Labor Force on page 12

Release Date: May 25, 2011

Data For: April 2011

In This Issue

- 2 Economic Comparison
- 3 NSA State & Area Employment
- 4 – 7 Data Trends (Graphs)
- 8 – 10 Nonfarm Employment
- 11 – 12 Unemployment Rates & Civilian Labor Force
- 13 Average Hours & Earnings
- 14 UI Claimants & BLS changes to CES Q&A
- 15 – 16 Glossary, Data Constraints, Downloads & Web Links

Statewide Overview

Seasonally adjusted nonfarm employment for Louisiana was estimated at 1,900,800 in April 2011. This represents a gain of 13,400 jobs from the previous month, and a 13,500-job increase from April 2010. Trade, transportation, and utilities posted the largest over-the-month change, gaining 3,400 jobs. The government sector posted the largest over-the-year change, losing 9,100 jobs.

Over the month, ten of the 11 industry sectors had increases in employment, while one showed a decrease. After trade, transportation, and utilities, the largest increase was seen in leisure and hospitality, which added 2,400 jobs. The manufacturing sector rose by 2,200 jobs from March, while the professional and business services sector added 2,000 jobs. Financial activities saw their total rise by 1,100, while the education and health services sector gained 1,000 jobs. Government added 700 jobs over the month, while both the construction and other services sectors added 300 jobs apiece. Mining and logging had a small increase of 100, while the information sector posted the only loss of the month, losing 100 jobs.

Over the year, eight sectors showed a gain, while three declined from last April. The largest over-the-year gain occurred in leisure and hospitality, which added 7,800 jobs. Education and health services also posted a strong gain of 7,100 compared to last year. Information rose by 3,200 from last April, while trade, transportation, and utilities added 2,000 jobs. Both the manufacturing and professional and business services sectors added 1,600 jobs over the year. Financial activities posted an increase of 400 jobs, while mining and logging added 200. After the decline in government, losses were also seen in construction (-1,100) and in other services (-200).

The April 2011 preliminary seasonally adjusted unemployment rate for Louisiana remained the same as the March revised rate of 8.1 percent. The national unemployment rate for April was 9.0 percent, an increase from the March rate of 8.8 percent. Total unemployment in the state for April was 167,919. The state civilian labor force decreased to 2,067,288 with a decrease in total employment to 1,899,369.

Economic Indicators

Seasonally Adjusted	PRELIMINARY APRIL 2011	
	United States	Louisiana
Civilian Labor Force		
Labor Force	153,421,000	2,067,288
Employed	139,674,000	1,899,369
Unemployed	13,747,000	167,919
Unemployment Rate	9.0	8.1
Nonfarm Wage and Salary Employment	APR 2011	APR 2011
	United States	Louisiana
Total Nonfarm	131,028,000	1,900,800
Mining and Logging	767,000	51,700
Construction	5,524,000	121,200
Manufacturing	11,706,000	140,600
Trade, Transportation, and Utilities	24,861,000	367,400
Information	2,684,000	28,000
Financial Activities	7,615,000	92,900
Professional and Business Services	17,128,000	193,200
Education and Health Services	19,914,000	277,700
Leisure and Hospitality	13,222,000	202,200
Other Services	5,441,000	65,500
Government	22,166,000	360,400
All Employees Average Hours & Earnings		
(Not Seasonally Adjusted)		
Construction	APR 2011	APR 2011
	United States	Louisiana
Average Weekly Earnings	\$ 968.75	\$ 923.06
Average Weekly Hours	38.2	41.9
Average Hourly Wages	\$ 25.36	\$ 22.03
Manufacturing		
Average Weekly Earnings	\$ 956.27	\$ 1,030.38
Average Weekly Hours	40.4	41.1
Average Hourly Wages	\$ 23.67	\$ 25.07
Louisiana Unemployment Insurance Activities		
Claims	APR 2011	
Initial New & Renewals	14,559	
Continued Weekly Intrastate Only	155,603	
Insured Unemployment Rate	2.6	
Benefits		
Number of First Payment	7,007	
Benefits Paid (000's)	\$ 26,758	
Weeks Compensated	137,129	
Average Wkly. Benefit Amount	\$ 196.94	
Average Duration of Claim (weeks)	19.6	
Exhaustions	4,065	
United States Consumer Price Index		
	APR 2011	
All Urban Consumers	224.9	



The civilian labor force and nonfarm **estimates** are prepared according to Bureau of Labor Statistics (BLS) methodology and are comparable with the U.S. and other states' data. For more information, go to page 15.

Economic Comparison

Seasonally Adjusted	PRELIMINARY APRIL 2011		REVISED MARCH 2011		REVISED APRIL 2010	
Civilian Labor Force	United States	Louisiana	United States	Louisiana	United States	Louisiana
Labor Force	153,421,000	2,067,288	153,406,000	2,076,517	154,520,000	2,078,366
Employed	139,674,000	1,899,369	139,864,000	1,907,830	139,382,000	1,927,839
Unemployed	13,747,000	167,919	13,542,000	168,687	15,138,000	150,527
Unemployment Rate	9.0	8.1	8.8	8.1	9.8	7.2
Nonfarm Wage and Salary Employment	APR 2011 United States	APR 2011 Louisiana	MAR 2011 United States	MAR 2011 Louisiana	APR 2010 United States	APR 2010 Louisiana
Total Nonfarm	131,028,000	1,900,800	130,784,000	1,887,400	129,715,000	1,887,300
Mining and Logging	767,000	51,700	757,000	51,600	687,000	51,500
Construction	5,524,000	121,200	5,519,000	120,900	5,566,000	122,300
Manufacturing	11,706,000	140,600	11,677,000	138,400	11,509,000	139,000
Trade, Transportation, and Utilities	24,861,000	367,400	24,790,000	364,000	24,581,000	365,400
Information	2,684,000	28,000	2,682,000	28,100	2,716,000	24,800
Financial Activities	7,615,000	92,900	7,611,000	91,800	7,648,000	92,500
Professional and Business Services	17,128,000	193,200	17,077,000	191,200	16,615,000	191,600
Education and Health Services	19,914,000	277,700	19,865,000	276,700	19,482,000	270,600
Leisure and Hospitality	13,222,000	202,200	13,176,000	199,800	12,998,000	194,400
Other Services	5,441,000	65,500	5,440,000	65,200	5,343,000	65,700
Government	22,166,000	360,400	22,190,000	359,700	22,570,000	369,500
All Employees Average Hours & Earnings						
Construction	United States (Not Seasonally Adjusted)			Louisiana (Not Seasonally Adjusted)		
	APR 2011	MAR 2011	APR 2010	APR 2011	MAR 2011	APR 2010
Average Weekly Earnings	\$ 968.75	\$ 952.50	\$ 951.90	\$ 923.06	\$ 885.61	\$ 885.60
Average Weekly Hours	38.2	37.5	38.0	41.9	40.2	42.7
Average Hourly Wages	\$ 25.36	\$ 25.40	\$ 25.05	\$ 22.03	\$ 22.03	\$ 20.74
Manufacturing						
Average Weekly Earnings	\$ 956.27	\$ 951.48	\$ 932.33	\$ 1,030.38	\$ 998.76	\$ 1,002.34
Average Weekly Hours	40.4	40.3	40.1	41.1	40.6	42.4
Average Hourly Wages	\$ 23.67	\$ 23.61	\$ 23.25	\$ 25.07	\$ 24.60	\$ 23.64
Louisiana Unemployment Insurance Activities						
Claims		APR 2011	MAR 2011	APR 2010	% Change From	
Initial New & Renewals		14,559	14,711	17,302	MAR 2011	APR 2010
Continued Weekly Intrastate Only		155,603	163,026	206,465	-1.0	-15.9
Insured Unemployment Rate*		2.6	2.7	3.3	-4.6	-24.6
Benefits					-5.5	-21.8
Number of First Payment		7,007	9,282	8,300		
Benefits Paid (000's)		\$ 26,758	\$ 31,096	\$ 39,010	-24.5	-15.6
Weeks Compensated		137,129	159,629	182,398	-14.0	-31.4
Average Wkly. Benefit Amount		\$ 196.94	\$ 196.66	\$ 216.17	-14.1	-24.8
Average Duration of Claim (w eeks)		19.6	17.2	22.0	0.1	-8.9
Exhaustions		4,065	3,952	6,143	13.8	-10.9
					2.9	-33.8
* Insured unemployment rate is for the week including the 12th of the month.						
United States Consumer Price Index						
	APR 2011	% Change From:		MAR 2011	% Change From:	
	Index	Prior Month	Prior Year	Index	Prior Month	Prior Year
All Urban Consumers	224.9	0.6	3.2	223.5	1.0	2.7

Not Seasonally Adjusted State and Area Employment

Not seasonally adjusted nonfarm employment for Louisiana was estimated at 1,903,600 for April 2011. Over the month, employment gained 13,100 jobs from March, while over the year employment gained 14,500 jobs. Goods-producing employment added 3,400 jobs over the month, while the service-providing employment added 9,700 jobs when compared to March. Over the year, goods-producing industries gained 2,100 jobs while the service-providing sector gained 12,400.

Total nonfarm employment in April for the Alexandria MSA was 65,200, an increase of 900 jobs from March, and a gain of 1,300 from a year ago. The goods-producing sector gained 100 jobs over the month, but had no change over the year. Service-providing employment gained 800 jobs from March and 1,300 jobs from April 2010.

Total nonfarm employment for the Baton Rouge MSA was estimated at 364,200 for April 2011. Over the month, the MSA showed an increase of 1,800 jobs, while over the year, nonfarm employment decreased by 700 jobs. Goods-producing employment showed no change from last month and a loss of 800 from last year. The service-providing sector gained 1,800 jobs from March, while adding 100 jobs over the year.

The Houma MSA nonfarm employment was estimated at 93,800 for April 2011. This shows a loss over the month of 300 jobs but an over-the-year gain of 1,900. Goods-producing gained 100 jobs over the month, while adding 400 jobs from last year. Service-providing lost 400 jobs from last month, while adding 1,500 over the year.

Total nonfarm employment for the Lafayette MSA was estimated at 147,500 for April 2011. This represents a gain from March of 900 jobs and an increase of 200 jobs from last year. Over the month, goods-producing employment rose by 800, while the service-providing sector added 100 jobs. Over the year, goods-producing employment increased by 500 jobs, while the service-providing sector decreased by 300 jobs.

Total nonfarm employment for the Lake Charles MSA was 89,900 for April 2011. This represents a gain of 200 jobs from March but a decrease of 200 jobs over the year. Over the month, both the goods-producing and service-providing sectors added 100 jobs. The goods-producing sector lost 700 jobs from last April, while the service-providing sector increased by 500 jobs over the year.

Total nonfarm employment for the Monroe MSA was estimated at 76,100 for April 2011. This represents a gain of 800 jobs over the month, but a loss of 400 jobs over the year. The goods-producing sector added 100 jobs over the month, while showing no change over the year. The service-providing sector added 700 jobs from March, but lost 400 jobs over the year.

Total nonfarm employment for the New Orleans MSA was 526,800 for April 2011. Over the month the MSA added 4,500 jobs, while over the year saw an increase of 4,900 positions. Goods-producing employment showed a gain of 600 from last month, but declined by 1,200 positions from last year. The service-providing sector rose by 3,900 from March and added 6,100 jobs from April 2010.

Total nonfarm employment for the Shreveport MSA was 181,000 for April 2011, an increase of 1,500 jobs from last month and a gain of 5,400 from April 2010. Goods-producing employment showed an increase of 400 from March and a gain of 2,400 from April 2010. Service-providing employment added 1,100 jobs over the month and 3,000 jobs compared to last year.

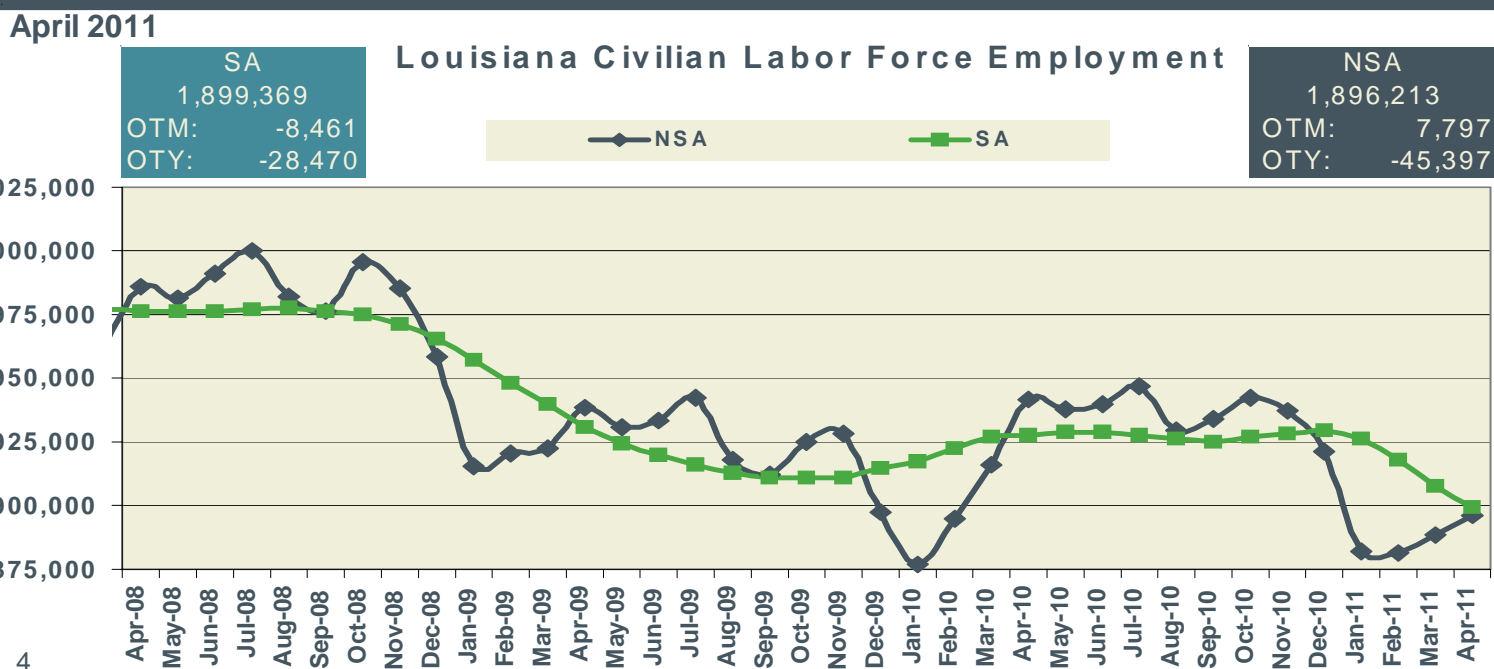
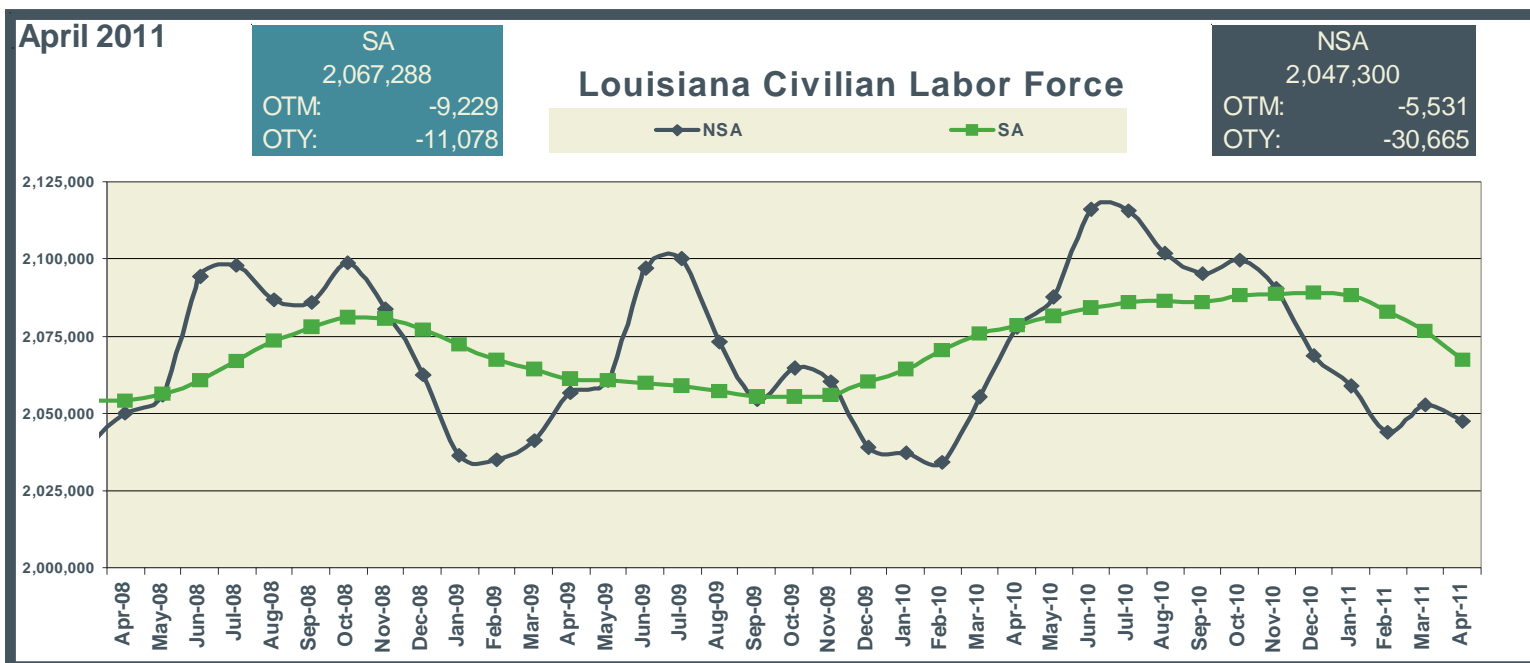
Keys to Graphs

The following graphs have been designed to reflect the over-the-year trends in the statistical data. Below are the most frequently used abbreviations.

- OTM over-the-month change in employment
- OTY over-the-year change in employment
- SA seasonally adjusted estimates
- NSA not seasonally adjusted estimates

Graphs for statewide reflect seasonally adjusted (SA) estimates compared to not seasonally adjusted (NSA) data.

Metropolitan Statistical Areas (MSAs) graphs denote nonfarm employment levels compared to a three year red trend line of the estimated employment. The navy lines in the graphs are the over-the-month changes for each year.



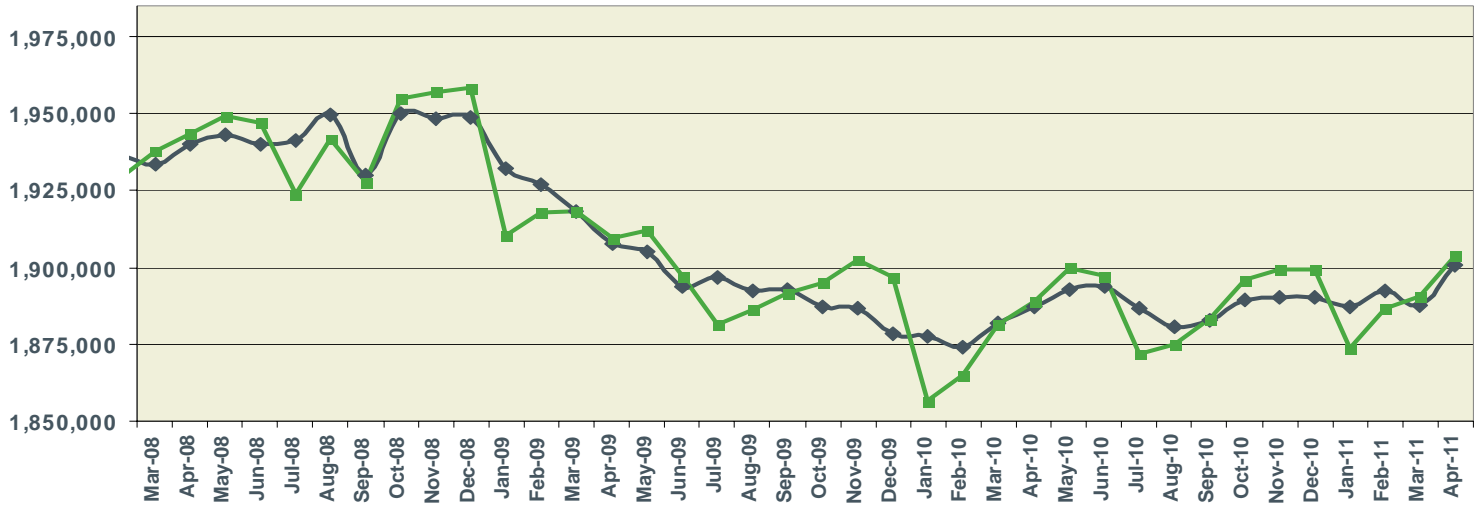
April 2011

SA	
1,900,800	
OTM:	13,400
OTY:	13,500

Louisiana Nonfarm Employment

NSA	
1,903,600	
OTM:	13,100
OTY:	14,500

SA Nonfarm NSA Nonfarm

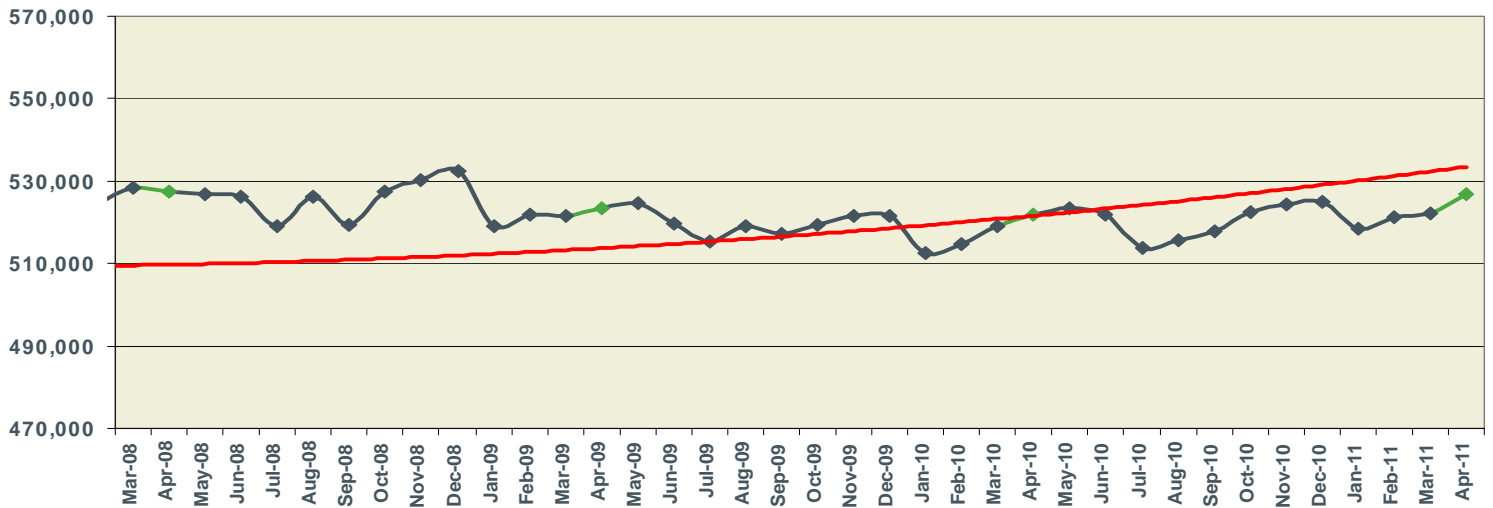


April 2011

New Orleans MSA Nonfarm Employment

NSA	
526,800	
OTM:	4,500
OTY:	4,900

Monthly Estimate 3 Year Trend

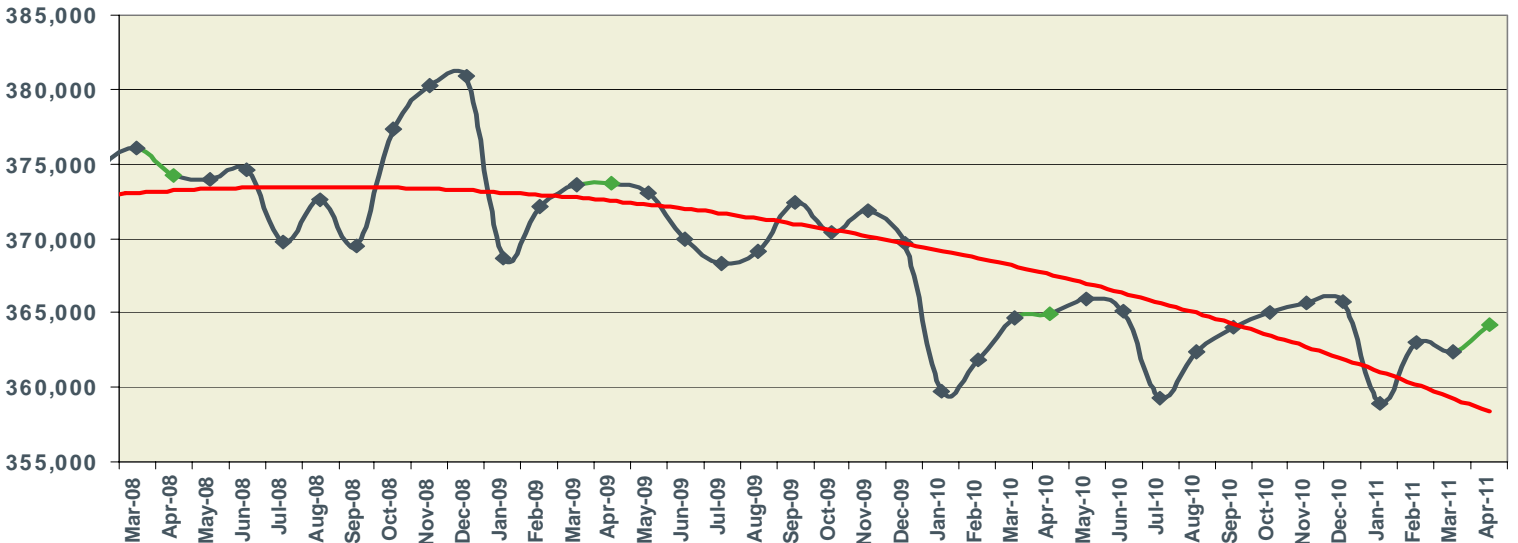


April 2011

Baton Rouge MSA Nonfarm Employment

NSA	
364,200	
OTM:	1,800
OTY:	-700

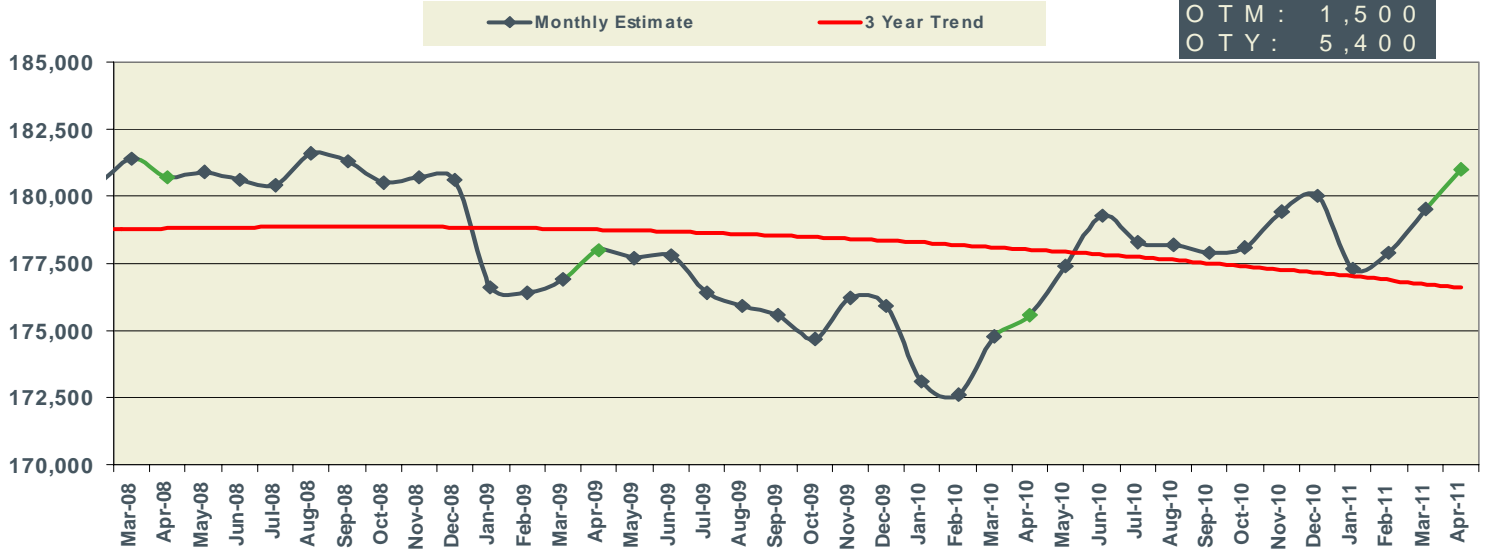
Monthly Estimate 3 Year Trend



April 2011

Shreveport MSA Nonfarm Employment

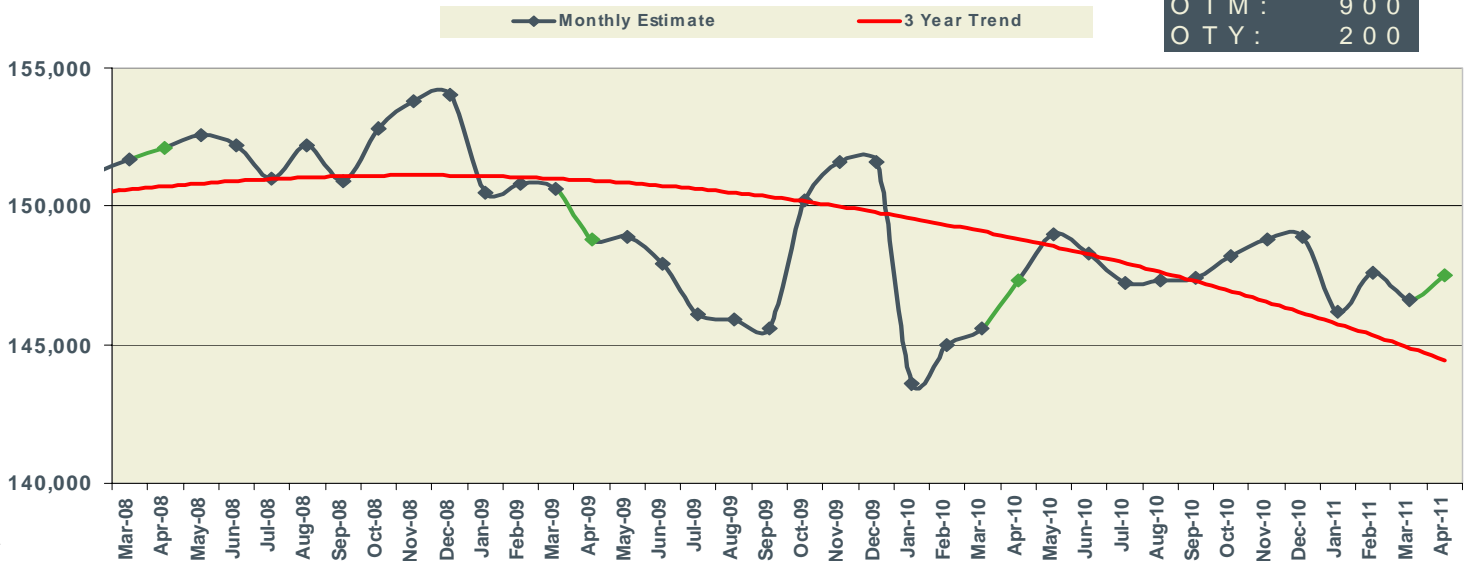
NSA	181,000
OTM	1,500
OTY	5,400



April 2011

Lafayette MSA Nonfarm Employment

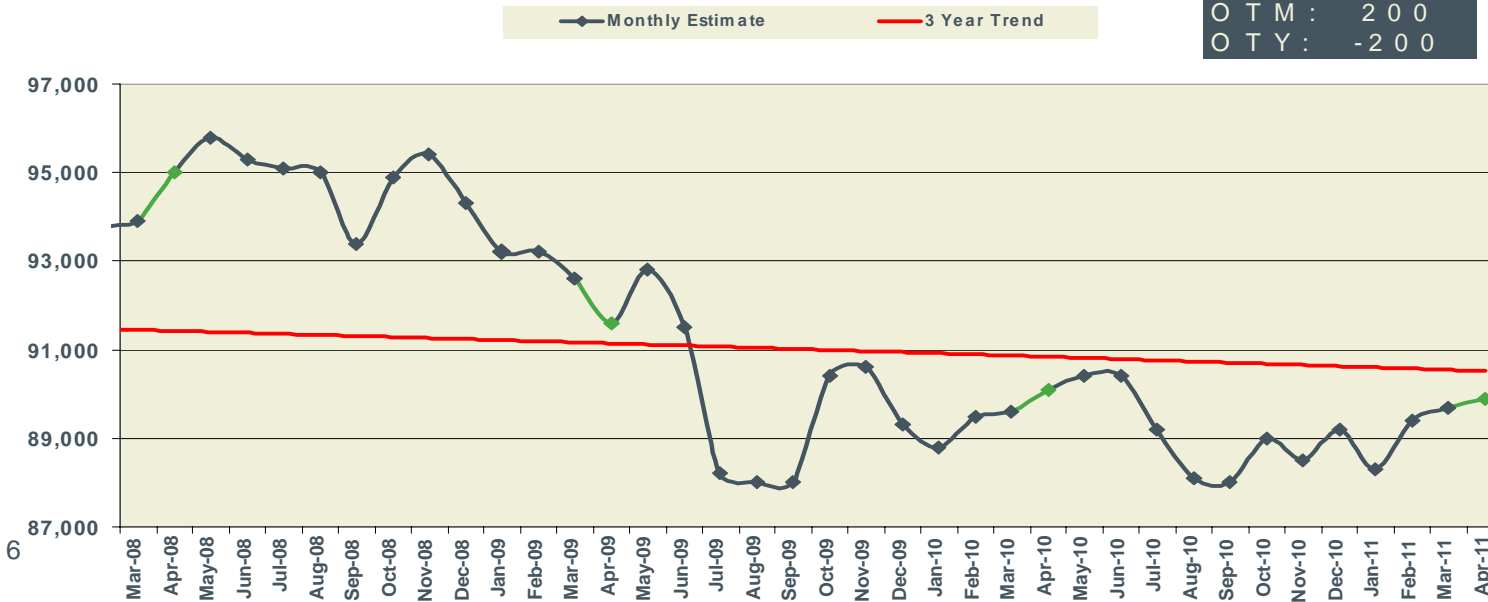
NSA	147,500
OTM	900
OTY	200



April 2011

Lake Charles MSA Nonfarm Employment

NSA	89,900
OTM	200
OTY	-200

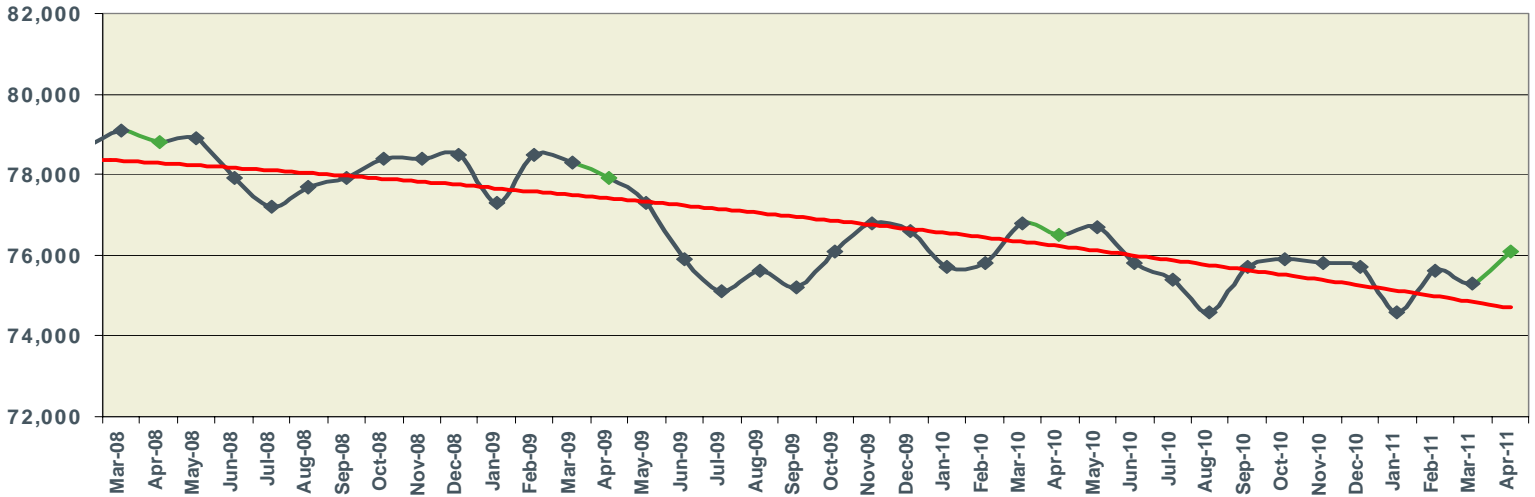


April 2011

Monroe MSA Nonfarm Employment

NSA
76,100
OTM: 800
OTY: -400

◆ Monthly Estimate — 3 Year Trend

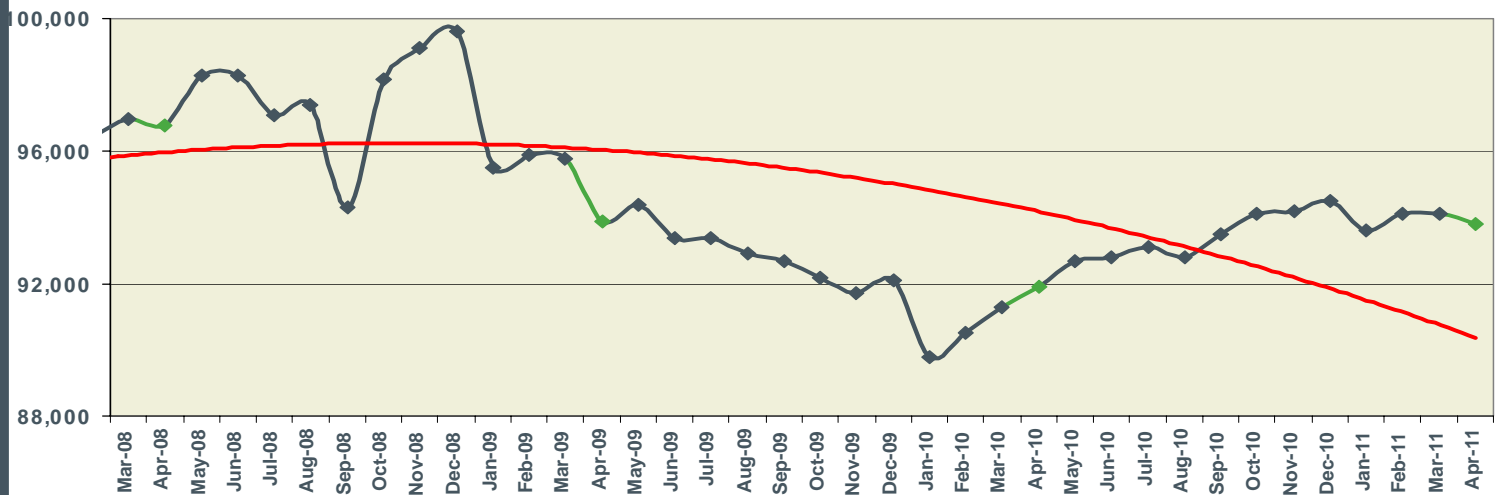


April 2011

Houma MSA Nonfarm Employment

NSA
93,800
OTM: -300
OTY: 1,900

◆ Monthly Estimate — 3 Year Trend

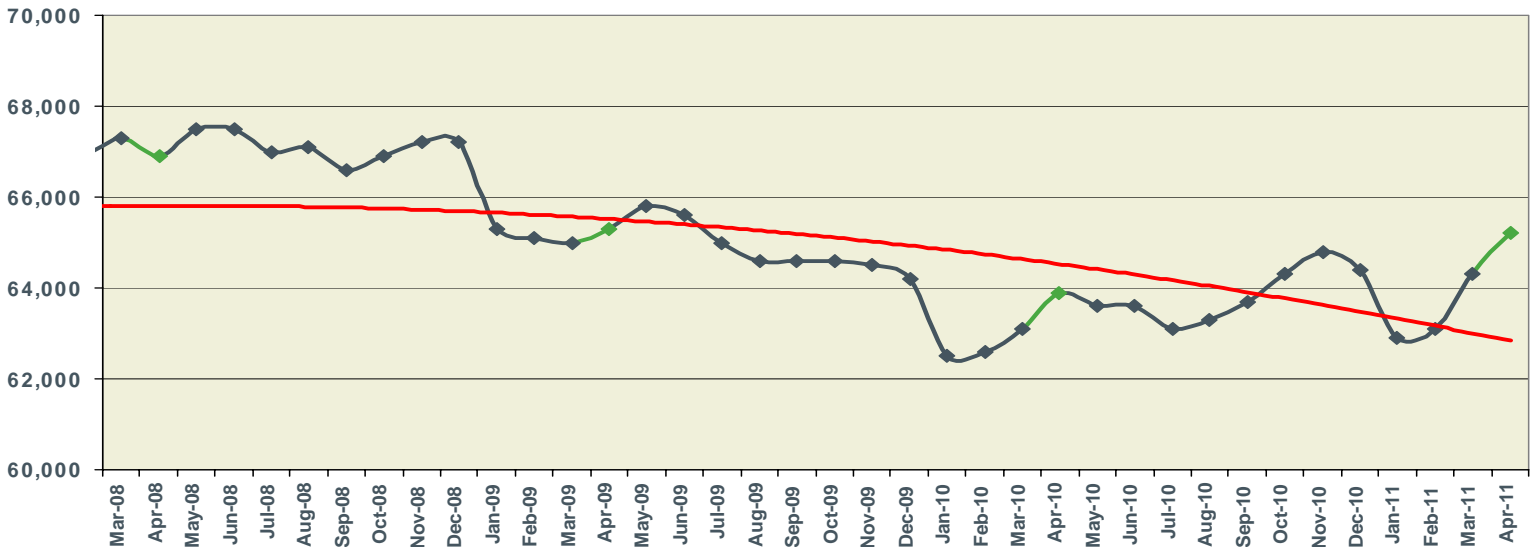


April 2011

Alexandria MSA Nonfarm Employment

NSA
65,200
OTM: 900
OTY: 1,300

◆ Monthly Estimate — 3 Year Trend



8 LOUISIANA & MSAs NONFARM EMPLOYMENT									
Not Seasonally Adjusted	LOUISIANA			NEW ORLEANS-METAIRIE-KENNER MSA			BATON ROUGE MSA		
	PREL	REV	REV	PREL	REV	REV	REL	REV	REV
	APR 2011	MAR 2011	APR 2010	APR 2011	MAR 2011	APR 2010	APR 2011	MAR 2011	APR 2010
Total Nonfarm	1,903,600	1,890,500	1,889,100	526,800	522,300	521,900	364,200	362,400	364,900
Total Private	1,541,300	1,528,700	1,516,000	446,100	442,000	438,600	286,300	284,700	287,000
Goods-Producing	312,800	309,400	310,700	69,200	68,600	70,400	63,600	63,600	64,400
Mining & Logging	51,800	51,400	51,400	7,500	7,500	7,600	1,900	1,900	2,100
Oil & Gas Extraction	8,600	8,500	8,300	2,800	2,800	2,800			
Crude Petroleum & Natural Gas Extraction	7,900	7,800	7,900						
Support Activities for Mining	39,300	39,300	39,300						
Drilling Oil & Gas Wells	9,400	9,000	9,100						
Construction	120,700	120,500	121,000	30,700	30,000	30,100	36,800	37,000	37,600
Construction of Buildings	20,600	20,800	22,900				6,800	6,900	7,300
Residential Building Construction	5,800	5,700	6,200						
Nonresidential Building Construction	14,800	15,100	16,700				6,300	6,200	6,400
Heavy & Civil Engineering Construction	38,900	39,500	38,400	8,400	8,900	8,800	12,600	13,000	12,900
Utility System Construction	18,800	18,800	18,100						
Specialty Trade Contractors	61,200	60,200	59,700	16,400	15,900	15,800	17,400	17,100	17,400
Manufacturing	140,300	137,500	138,300	31,000	31,100	32,700	24,900	24,700	24,700
Durable Goods	71,000	69,800	71,000	15,000	15,200	16,800			
Transportation Equipment Manufacturing	15,900	16,000	18,100	6,700	6,900	8,700			
Ship & Boat Building	11,000	11,000	12,100	5,400	5,500	6,300			
Nondurable Goods	69,300	67,700	67,300	16,000	15,900	15,900	16,700	16,700	16,500
Food Manufacturing	15,400	15,200	15,900						
Paper Manufacturing	7,200	7,200	6,900						
Petroleum & Coal Products Mfg. & Chemical Mfg.									
Petroleum & Coal Products Manufacturing	11,500	11,600	11,500						
Chemical Manufacturing	23,100	22,900	22,300	4,500	4,500	4,300	9,800	9,500	9,300
Basic Chemical Manufacturing	12,200	12,300	12,100				5,500	5,600	5,500
Service-Providing	1,590,800	1,581,100	1,578,400	457,600	453,700	451,500	300,600	298,800	300,500
Private Service-Providing	1,228,500	1,219,300	1,205,300	376,900	373,400	368,200	222,700	221,100	222,600
Trade, Transportation, & Utilities	366,200	364,800	362,600	103,600	103,000	102,400	64,500	64,000	64,600
Wholesale Trade	68,200	68,900	70,100	21,800	21,400	22,100	12,100	12,100	12,400
Merchant Wholesalers, Durable Goods	36,500	37,000	36,400	10,400	10,500	10,600			
Merchant Wholesalers, Nondurable Goods	23,600	23,600	24,700	7,600	7,600	7,700			
Retail Trade	219,400	217,400	216,400	57,400	57,300	56,300	40,800	40,300	40,500
Clothing & Clothing Accessories Stores, General Merchandise									
Motor Vehicle & Parts Dealers	25,700	25,500	25,800						
Building Material & Garden Equipment & Supplies Dealers	20,400	19,900	20,100						
Food & Beverage Stores	35,100	35,400	36,000						
Grocery Stores	30,200	30,600	31,200	7,900	8,200	8,400	5,500	5,600	5,700
Health & Personal Care Stores	15,300	15,300	15,500						
Gasoline Stations	18,400	18,400	18,200						
Clothing and Clothing Accessories Stores	17,600	17,700	17,800						
General Merchandise Stores	52,900	52,100	50,800	12,800	12,400	11,900	9,300	9,200	9,300
Department Stores	16,700	16,400	16,100				2,400	2,400	2,600
Transportation, Warehousing, & Utilities	78,600	78,500	76,100	24,400	24,300	24,000	11,600	11,600	11,700
Transportation and Warehousing	69,400	69,500	66,700						
Truck Transportation	16,100	15,900	16,200						
Support Activities for Transportation	19,200	19,400	18,700						
Information	28,000	28,100	24,800	8,900	9,000	7,000	5,100	5,200	5,200
Telecommunications	10,200	10,200	10,700						
Financial Activities	92,800	91,800	92,200	25,600	25,600	25,900	16,700	16,700	17,200
Finance & Insurance	62,200	62,300	62,000	18,100	18,100	18,400	11,900	12,000	12,300
Credit Intermediation & Related Activities	31,700	31,600	32,500	7,400	7,400	7,700			
Depository Credit Intermediation	22,700	22,700	23,300	5,700	5,700	5,900	4,300	4,300	4,500
Insurance Carriers & Related Activities	26,400	26,500	25,400						
Real Estate & Rental & Leasing	30,600	29,500	30,200						
Professional & Business Services	193,100	191,300	192,500	66,500	66,100	68,900	42,000	41,300	41,800
Professional, Scientific, & Technical Services	81,000	81,200	79,700	28,600	28,800	29,300	19,200	18,800	18,500
Legal Services	19,200	18,900	19,000	8,200	8,200	8,300			
Accounting, Tax Preparation, Bookkeeping & Payroll Services	11,700	11,700	11,900						
Architectural, Engineering, & Related Services	23,700	23,700	22,900						
Management of Companies & Enterprises	23,600	23,700	23,800	8,000	8,000	8,200			
Admin. & Support & Waste Mgmt. & Remediation Serv.	88,500	86,400	89,000	29,900	29,300	31,400	18,000	17,800	18,400
Administrative & Support Services	79,100	77,600	80,900	27,400	26,900	29,400			
Employment Services	28,400	28,100	28,700	10,200	9,900	11,400			
Services to Buildings & Dwellings	19,600	18,900	18,800						
Education & Health Services	278,900	277,400	272,000	77,900	76,900	75,700	49,100	49,100	48,900
Educational Services	38,700	38,000	38,100	20,700	20,300	20,900			
Colleges, Universities, & Professional Schools	21,300	20,900	21,000	11,900	11,800	12,400			
Health Care & Social Assistance	240,200	239,400	233,900	57,200	56,600	54,800	42,500	42,500	41,900
Ambulatory Health Care Services	86,600	86,600	85,100	21,400	21,400	21,000	17,800	17,700	17,300
Offices of Physicians	33,400	33,300	33,300						
Home Health Care Services	21,700	21,600	21,300						
Hospitals	66,500	66,200	64,900	18,600	18,600	17,800	11,700	11,600	11,500
Nursing & Residential Care Facilities	42,200	42,300	40,800						
Nursing Care Facilities	26,000	26,000	25,500						
Social Assistance	44,900	44,300	43,100						
Leisure & Hospitality	203,200	200,500	195,500	75,500	74,000	69,700	32,500	32,100	32,200
Arts, Entertainment, & Recreation	27,400	27,400	27,600	10,200	10,200	9,700			
Amusement, Gambling, & Recreation Industries	21,400	21,400	21,200	5,900	5,900	5,600			
Gambling Industries	10,300	10,400	10,500	2,100	2,100	2,000			
Accommodation & Food Services	175,800	173,100	167,900	65,300	63,800	60,000	27,600	27,200	27,700
Accommodation	28,800	27,700	26,900	13,700	13,400	12,800			
Food Services & Drinking Places	147,000	145,400	141,000	51,600	50,400	47,200	25,800	25,700	25,500
Other Services	66,300	65,400	65,700	18,900	18,800	18,600	12,800	12,700	12,700
Repair & Maintenance	19,200	19,300	19,500						
Automotive Repair & Maintenance	10,700	10,600	10,900						
Personal & Laundry Services	15,500	15,300	15,500						
Government	362,300	361,800	373,100	80,700	80,300	83,300	77,900	77,700	77,900
Federal Government	31,500	31,400	33,200	12,400	12,400	12,800	3,000	3,000	3,300
State Government	111,600	112,300	114,000	19,200	18,800	20,600	40,900	41,500	40,700
Local Government	219,200	218,100	225,900	49,100	49,100	49,900	34,000	33,200	33,900

LOUISIANA & MSAs NONFARM EMPLOYMENT

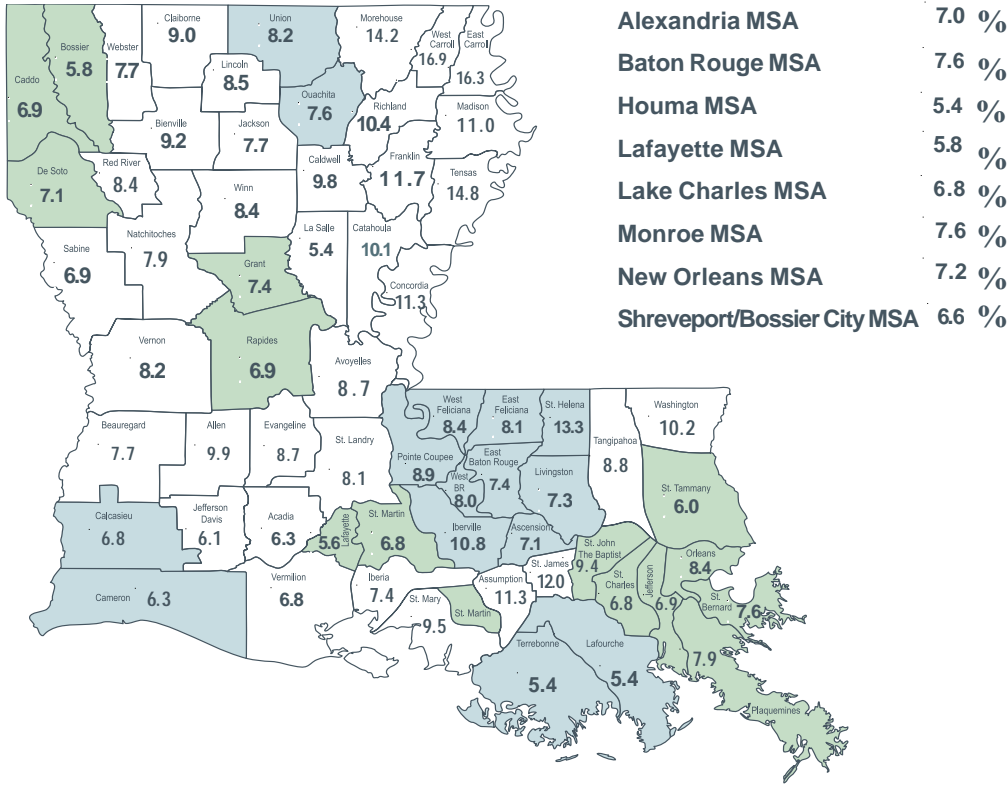
9

Not Seasonally Adjusted	SHREVEPORT-BOSSIER CITY MSA			LAFAYETTE MSA			LAKE CHARLES MSA		
	PREL	REV	REV	PREL	REV	REV	PREL	REV	REV
	APR 2011	MAR 2011	APR 2010	APR 2011	MAR 2011	APR 2010	APR 2011	MAR 2011	APR 2010
Total Nonfarm	181,000	179,500	175,600	147,500	146,600	147,300	89,900	89,700	90,100
Total Private	145,100	143,700	139,800	129,500	128,600	129,100	74,300	74,000	73,400
Goods-Producing	26,100	25,700	23,700	31,200	30,400	30,700	18,200	18,100	18,900
Mining & Logging	6,300	6,400	5,300	15,600	15,200	14,900	1,100	1,100	1,200
Oil & Gas Extraction									
Crude Petroleum & Natural Gas Extraction									
Support Activities for Mining				13,000	12,700	12,900			
Drilling Oil & Gas Wells									
Construction	9,500	9,300	8,200	5,700	5,700	6,500	7,900	8,000	8,500
Construction of Buildings									
Residential Building Construction									
Nonresidential Building Construction									
Heavy & Civil Engineering Construction							3,500	3,500	3,900
Utility System Construction									
Specialty Trade Contractors									
Manufacturing	10,300	10,000	10,200	9,900	9,500	9,300	9,200	9,000	9,200
Durable Goods									
Transportation Equipment Manufacturing	1,100	1,100	1,400						
Ship & Boat Building									
Nondurable Goods							6,900	6,800	6,900
Food Manufacturing									
Paper Manufacturing									
Petroleum & Coal Products Mfg. & Chemical Mfg.							6,500	6,400	6,400
Petroleum & Coal Products Manufacturing									
Chemical Manufacturing									
Basic Chemical Manufacturing									
Service-Providing	154,900	153,800	151,900	116,300	116,200	116,600	71,700	71,600	71,200
Private Service-Providing	119,000	118,000	116,100	98,300	98,200	98,400	56,100	55,900	54,500
Trade, Transportation, & Utilities	33,800	33,400	32,900	28,600	28,700	28,700	16,400	16,300	16,100
Wholesale Trade	6,500	6,500	6,400	7,500	7,600	7,600			
Merchant Wholesalers, Durable Goods									
Merchant Wholesalers, Nondurable Goods									
Retail Trade	21,000	20,700	20,400	17,300	17,300	17,400	10,100	10,000	10,100
Clothing & Clothing Accessories Stores, General Merchandise							3,300	3,300	3,400
Motor Vehicle & Parts Dealers									
Building Material & Garden Equipment & Supplies Dealers									
Food & Beverage Stores									
Grocery Stores									
Health & Personal Care Stores									
Gasoline Stations									
Clothing and Clothing Accessories Stores									
General Merchandise Stores	4,600	4,600	4,400	3,600	3,600	3,500			
Department Stores									
Transportation, Warehousing, & Utilities	6,300	6,200	6,100	3,800	3,800	3,700			
Transportation and Warehousing									
Truck Transportation									
Support Activities for Transportation									
Information	4,700	4,800	3,400	2,600	2,600	2,700			
Telecommunications									
Financial Activities	7,100	7,100	6,900	8,200	8,200	8,300			
Finance & Insurance									
Credit Intermediation & Related Activities									
Depository Credit Intermediation									
Insurance Carriers & Related Activities									
Real Estate & Rental & Leasing									
Professional & Business Services	16,800	16,400	16,500	17,000	16,900	16,700	6,800	6,800	6,900
Professional, Scientific, & Technical Services				8,000	8,100	7,700			
Legal Services									
Accounting, Tax Preparation, Bookkeeping & Payroll Services									
Architectural, Engineering, & Related Services									
Management of Companies & Enterprises									
Admin. & Support & Waste Mgmt. & Remediation Serv.	9,900	9,600	9,800						
Administrative & Support Services									
Employment Services									
Services to Buildings & Dwellings									
Education & Health Services	26,400	26,400	26,300	22,000	22,000	21,800			
Educational Services									
Colleges, Universities, & Professional Schools									
Health Care & Social Assistance	25,300	25,300	24,800	20,000	19,900	19,600			
Ambulatory Health Care Services									
Offices of Physicians									
Home Health Care Services									
Hospitals	9,700	9,700	9,600	5,200	5,200	5,400	3,500	3,500	3,400
Nursing & Residential Care Facilities									
Nursing Care Facilities									
Social Assistance									
Leisure & Hospitality	22,100	21,800	22,200	15,100	15,000	15,300	11,800	11,700	11,500
Arts, Entertainment, & Recreation	5,600	5,600	5,900						
Amusement, Gambling, & Recreation Industries	5,500	5,500	5,600						
Gambling Industries	4,300	4,300	4,500						
Accommodation & Food Services	16,500	16,200	16,300	13,200	13,200	13,300	10,300	10,300	10,200
Accommodation									
Food Services & Drinking Places	13,600	13,300	13,200	12,200	12,100	12,300			
Other Services	8,100	8,100	7,900	4,800	4,800	4,900			
Repair & Maintenance									
Automotive Repair & Maintenance									
Personal & Laundry Services									
Government	35,900	35,800	35,800	18,000	18,000	18,200	15,600	15,700	16,700
Federal Government	4,800	4,800	4,800	1,100	1,100	1,300	600	600	800
State Government	11,400	11,600	10,900	5,900	5,800	5,800	4,000	4,000	4,100
Local Government	19,700	19,400	20,100	11,000	11,100	11,100	11,000	11,100	11,800

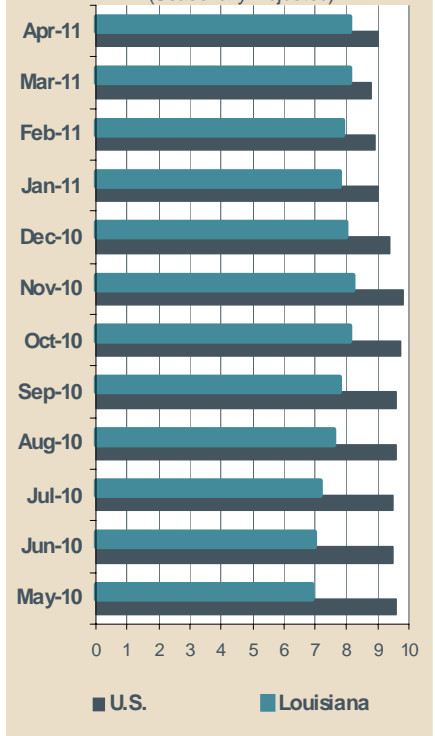
	MONROE MSA			HOUMA-BAYOU CANE- THIBODAU MSA			ALEXANDRIA MSA		
	PREL	REV	REV	PREL	REV	REV	PREL	REV	REV
	APR	MAR	APR	APR	MAR	APR	APR	MAR	APR
	2011	2011	2010	2011	2011	2010	2011	2011	2010
<i>Not Seasonally Adjusted</i>									
Total Nonfarm	76,100	75,300	76,500	93,800	94,100	91,900	65,200	64,300	63,900
Total Private	61,500	60,800	61,600	80,000	80,300	77,200	50,300	49,400	48,600
Goods-Producing	10,300	10,200	10,300	20,100	20,000	19,700	8,400	8,300	8,400
Mining & Logging				5,700	5,700	5,900			
Oil & Gas Extraction									
Crude Petroleum & Natural Gas Extraction									
Support Activities for Mining				4,700	4,700	5,100			
Drilling Oil & Gas Wells									
Construction				5,800	5,900	5,000			
Construction of Buildings									
Residential Building Construction									
Nonresidential Building Construction									
Heavy & Civil Engineering Construction									
Utility System Construction									
Specialty Trade Contractors									
Manufacturing	6,900	6,700	6,700						
Durable Goods									
Transportation Equipment Manufacturing									
Ship & Boat Building									
Nondurable Goods	5,100	5,000	4,900						
Food Manufacturing									
Paper Manufacturing									
Petroleum & Coal Products Mfg. & Chemical Mfg.									
Petroleum & Coal Products Manufacturing									
Chemical Manufacturing									
Basic Chemical Manufacturing									
Service-Providing	65,800	65,100	66,200	73,700	74,100	72,200	56,800	56,000	55,500
Private Service-Providing	51,200	50,600	51,300	59,900	60,300	57,500	41,900	41,100	40,200
Trade, Transportation, & Utilities	13,700	13,700	13,800	24,500	24,700	23,600	11,500	11,500	11,500
Wholesale Trade									
Merchant Wholesalers, Durable Goods									
Merchant Wholesalers, Nondurable Goods									
Retail Trade	9,500	9,400	9,500	10,700	10,700	10,800	7,900	7,800	7,700
Clothing & Clothing Accessories Stores, General Merchandise	3,300	3,400	3,400						
Motor Vehicle & Parts Dealers									
Building Material & Garden Equipment & Supplies Dealers									
Food & Beverage Stores									
Grocery Stores									
Health & Personal Care Stores									
Gasoline Stations									
Clothing and Clothing Accessories Stores									
General Merchandise Stores									
Department Stores									
Transportation, Warehousing, & Utilities									
Transportation and Warehousing									
Truck Transportation									
Support Activities for Transportation				4,400	4,400	4,400			
Information									
Telecommunications									
Financial Activities									
Finance & Insurance									
Credit Intermediation & Related Activities									
Depository Credit Intermediation									
Insurance Carriers & Related Activities									
Real Estate & Rental & Leasing									
Professional & Business Services	7,300	7,200	7,200						
Professional, Scientific, & Technical Services									
Legal Services									
Accounting, Tax Preparation, Bookkeeping & Payroll Services									
Architectural, Engineering, & Related Services									
Management of Companies & Enterprises									
Admin. & Support & Waste Mgmt. & Remediation Serv.									
Administrative & Support Services				5,000	4,800	3,900			
Employment Services				3,400	3,200	2,300			
Services to Buildings & Dwellings									
Education & Health Services	13,300	13,300	12,900						
Educational Services									
Colleges, Universities, & Professional Schools									
Health Care & Social Assistance									
Ambulatory Health Care Services									
Offices of Physicians									
Home Health Care Services									
Hospitals	3,600	3,600	3,500				4,400	4,400	4,100
Nursing & Residential Care Facilities									
Nursing Care Facilities									
Social Assistance									
Leisure & Hospitality	7,100	6,900	7,200	7,700	7,600	7,400			
Arts, Entertainment, & Recreation									
Amusement, Gambling, & Recreation Industries									
Gambling Industries									
Accommodation & Food Services									
Accommodation									
Food Services & Drinking Places									
Other Services									
Repair & Maintenance									
Automotive Repair & Maintenance									
Personal & Laundry Services									
Government	14,600	14,500	14,900	13,800	13,800	14,700	14,900	14,900	15,300
Federal Government	600	600	700	400	400	600	3,000	3,000	3,000
State Government	4,700	4,700	4,800	3,200	3,200	3,400	4,500	4,500	4,800
Local Government	9,300	9,200	9,400	10,200	10,200	10,700	7,400	7,400	7,500

Louisiana Unemployment Rates (Not Seasonally Adjusted)

April 2011

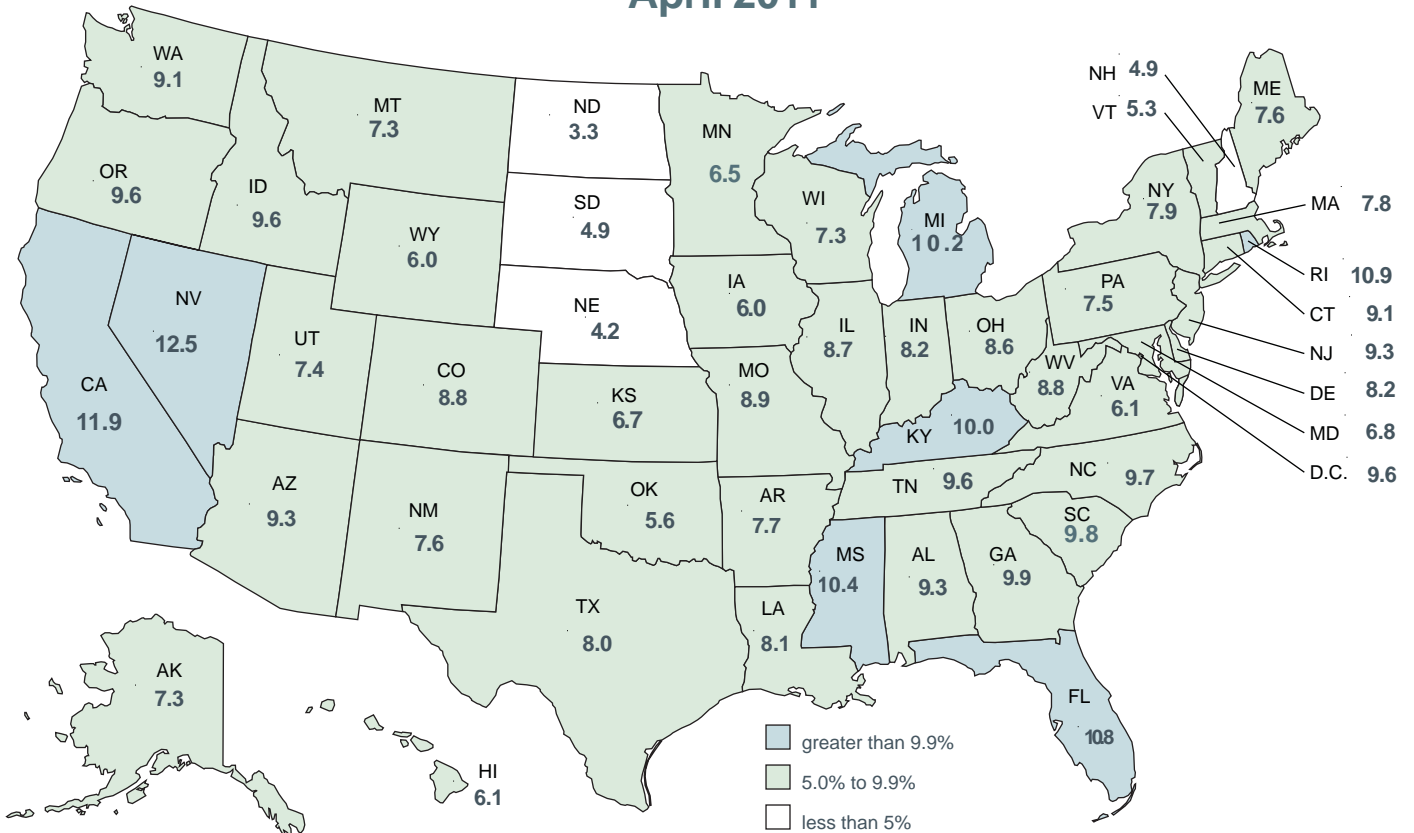


United States - Louisiana Unemployment Rates (Seasonally Adjusted)



United States Unemployment Rates (Seasonally Adjusted)

April 2011



United States Rate 9.0

CIVILIAN LABOR FORCE (Not Seasonally Adjusted)

Area	Preliminary April 2011			Revised March 2011			Revised April 2010		
	Employed	Unemployed	Rate	Employed	Unemployed	Rate	Employed	Unemployed	Rate
UNITED STATES	139,661,000	13,237,000	8.7	138,962,000	14,060,000	9.2	139,302,000	14,609,000	9.5
LOUISIANA	1,896,213	151,087	7.4	1,888,416	164,415	8.0	1,941,610	136,355	6.6
ALEXANDRIA MSA	64,242	4,837	7.0	63,280	5,264	7.7	65,046	4,298	6.2
Grant	8,040	644	7.4	7,919	715	8.3	8,140	606	6.9
Rapides	56,202	4,193	6.9	55,361	4,549	7.6	56,906	3,692	6.1
BATON ROUGE MSA	343,621	28,202	7.6	343,149	30,598	8.2	353,863	24,318	6.4
Ascension	47,039	3,612	7.1	46,975	3,844	7.6	48,441	3,322	6.4
East Baton Rouge	198,470	15,770	7.4	198,197	17,233	8.0	204,385	13,362	6.1
East Feliciana	7,300	644	8.1	7,290	737	9.2	7,517	587	7.2
Iberville	10,920	1,318	10.8	10,905	1,474	11.9	11,246	1,085	8.8
Livingston	53,730	4,220	7.3	53,656	4,541	7.8	55,331	3,772	6.4
Pointe Coupee	8,596	844	8.9	8,584	863	9.1	8,852	666	7.0
St. Helena	3,663	562	13.3	3,658	592	13.9	3,772	446	10.6
West Baton Rouge	9,646	842	8.0	9,632	938	8.9	9,933	720	6.8
West Feliciana	4,258	391	8.4	4,252	376	8.1	4,385	360	7.6
HOUMA-BAYOU CANE- THIBODAUX MSA	96,834	5,540	5.4	97,102	6,024	5.8	97,915	5,098	4.9
Lafourche	45,724	2,602	5.4	45,851	2,821	5.8	46,235	2,297	4.7
Terrebonne	51,110	2,938	5.4	51,251	3,203	5.9	51,680	2,801	5.1
LAFAYETTE MSA	126,330	7,739	5.8	125,333	8,426	6.3	129,360	7,231	5.3
Lafayette	104,461	6,145	5.6	103,637	6,704	6.1	106,967	5,666	5.0
St. Martin	21,869	1,594	6.8	21,696	1,722	7.4	22,393	1,565	6.5
LAKE CHARLES MSA	87,456	6,331	6.8	87,516	6,795	7.2	89,681	5,969	6.2
Calcasieu	84,582	6,138	6.8	84,640	6,596	7.2	86,734	5,798	6.3
Cameron	2,874	193	6.3	2,876	199	6.5	2,947	171	5.5
MONROE MSA	73,980	6,117	7.6	73,335	6,790	8.5	76,580	5,698	6.9
Ouachita	64,943	5,315	7.6	64,377	5,939	8.4	67,225	4,919	6.8
Union	9,037	802	8.2	8,958	851	8.7	9,355	779	7.7
NEW ORLEANS-METairie- KENNER MSA	499,707	39,046	7.2	497,147	42,438	7.9	508,717	35,185	6.5
Jefferson	197,981	14,595	6.9	196,967	15,821	7.4	201,551	13,433	6.2
New Orleans City/Oreans	134,380	12,344	8.4	133,691	13,442	9.1	136,803	10,792	7.3
Plaquemines	7,462	638	7.9	7,424	664	8.2	7,596	475	5.9
St. Bernard	16,963	1,391	7.6	16,876	1,475	8.0	17,268	1,136	6.2
St. Charles	22,209	1,630	6.8	22,096	1,788	7.5	22,610	1,599	6.6
St. John Baptist	18,706	1,943	9.4	18,610	2,212	10.6	19,043	1,936	9.2
St. Tammany	102,006	6,505	6.0	101,484	7,036	6.5	103,846	5,815	5.3
SHREVEPORT-BOSSIER CITY MSA	174,089	12,291	6.6	172,269	13,199	7.1	173,484	11,297	6.1
Bossier	51,635	3,170	5.8	51,095	3,314	6.1	51,455	2,764	5.1
Caddo	111,779	8,299	6.9	110,611	8,977	7.5	111,391	7,702	6.5
De Soto	10,675	822	7.1	10,563	908	7.9	10,638	831	7.2
NON-MSA PARISHES									
Acadia (Crowley) ¹	23,703	1,589	6.3	23,577	1,728	6.8	25,086	1,582	5.9
Allen	7,668	841	9.9	7,697	934	10.8	7,974	890	10.0
Assumption (Pierre Part) ¹	9,029	1,155	11.3	9,026	1,280	12.4	9,339	930	9.1
Avoyelles	14,582	1,387	8.7	14,477	1,494	9.4	15,511	1,193	7.1
Beauregard (DeRidder) ¹	13,406	1,114	7.7	13,366	1,120	7.7	13,630	980	6.7
Bienville	5,712	577	9.2	5,722	631	9.9	5,862	517	8.1
Caldwell	4,032	436	9.8	4,021	471	10.5	4,130	405	8.9
Catahoula	3,754	423	10.1	3,739	489	11.6	3,937	381	8.8
Claiborne	5,775	571	9.0	5,827	625	9.7	6,052	547	8.3
Concordia (Natchez, MS-LA) ¹	6,445	818	11.3	6,365	938	12.8	6,671	674	9.2
East Carroll	2,219	432	16.3	2,281	493	17.8	2,512	375	13.0
Evangeline	11,219	1,065	8.7	11,275	1,169	9.4	11,736	951	7.5
Franklin	6,668	885	11.7	6,629	1,016	13.3	7,085	770	9.8
Iberia (New Iberia) ¹	30,147	2,407	7.4	30,142	2,604	8.0	30,828	2,409	7.2
Jackson (Ruston) ¹	5,904	495	7.7	5,903	531	8.3	6,088	440	6.7
Jefferson Davis (Jennings) ¹	13,226	858	6.1	13,199	934	6.6	13,949	810	5.5
La Salle	6,511	375	5.4	6,459	407	5.9	6,461	357	5.2
Lincoln (Ruston) ¹	17,535	1,639	8.5	17,534	1,786	9.2	18,080	1,361	7.0
Madison (Tallulah) ¹	4,025	495	11.0	4,014	541	11.9	4,165	441	9.6
Morehouse (Bastrop) ¹	9,245	1,526	14.2	9,243	1,764	16.0	9,936	1,427	12.6
Natchitoches (Natchitoches) ¹	15,188	1,296	7.9	15,202	1,416	8.5	16,056	1,163	6.8
Red River	3,279	300	8.4	3,274	336	9.3	3,407	273	7.4
Richland	8,107	938	10.4	8,100	1,062	11.6	8,297	812	8.9
Sabine	8,704	641	6.9	8,685	678	7.2	8,802	575	6.1
St. James	8,132	1,111	12.0	8,116	1,271	13.5	8,491	955	10.1
St. Landry (Opelousas, Eunice) ¹	34,918	3,067	8.1	34,777	3,405	8.9	35,906	2,838	7.3
St. Mary (Morgan City) ¹	20,246	2,135	9.5	20,312	2,371	10.5	20,930	1,965	8.6
Tangipahoa (Hammond) ¹	47,403	4,600	8.8	47,190	5,071	9.7	49,084	4,169	7.8
Tensas	1,484	257	14.8	1,524	315	17.1	1,700	269	13.7
Vermilion (Abbeville) ¹	21,912	1,594	6.8	21,723	1,769	7.5	22,987	1,610	6.5
Vernon (Fort Polk South) ¹	19,415	1,741	8.2	19,340	1,577	7.5	19,573	1,256	6.0
Washington (Bogalusa) ¹	13,178	1,489	10.2	13,300	1,599	10.7	14,460	1,383	8.7
Webster (Mindon) ¹	17,990	1,510	7.7	17,965	1,676	8.5	18,598	1,390	7.0
West Carroll	3,335	679	16.9	3,363	810	19.4	3,701	677	15.5
Winn	5,858	538	8.4	5,916	569	8.8	5,939	486	7.6

¹In addition to the eight (8) Metropolitan Statistical Areas (MSAs) in Louisiana, there are seventeen (17) Micropolitan Statistical Areas (MCs): Jackson and Lincoln Parishes combine to constitute one MC area. Civilian Labor Force can be derived by adding employed and unemployed. For related information or data, please visit: www.bls.gov/lau/home.htm.

LOUISIANA - PRIVATE EMPLOYMENT (Not Seasonally Adjusted)

	Avg. Weekly Earnings (\$)			Avg. Weekly Hours			Avg. Hourly Earnings (\$)		
	APR	MAR	APR	APR	MAR	APR	APR	MAR	APR
	2011	2011	2010	2011	2011	2010	2011	2011	2010
Total Private	742.20	721.80	712.85	36.4	36.0	36.5	20.39	20.05	19.53
Goods-Producing	1,015.45	979.15	995.16	42.1	40.9	43.4	24.12	23.94	22.93
Private Service-Providing	671.48	655.14	639.52	34.9	34.7	34.7	19.24	18.88	18.43
Construction	923.06	885.61	885.60	41.9	40.2	42.7	22.03	22.03	20.74
Manufacturing	1,030.38	998.76	1,002.34	41.1	40.6	42.4	25.07	24.60	23.64
Trade, Transportation, and Utilities	674.53	655.04	642.69	36.9	36.8	37.0	18.28	17.80	17.37
Financial Activities	706.93	661.70	706.15	36.8	36.7	35.9	19.21	18.03	19.67
Professional and Business Services	981.29	975.03	898.17	39.6	39.3	39.0	24.78	24.81	23.03
Education and Health Services	605.73	582.53	575.06	33.3	32.8	32.6	18.19	17.76	17.64
Leisure and Hospitality	324.46	330.71	320.65	26.4	26.8	26.9	12.29	12.34	11.92

METROPOLITAN STATISTICAL AREA (MSA) PRIVATE EMPLOYMENT (Not Seasonally Adjusted)

	Avg. Weekly Earnings (\$)			Avg. Weekly Hours			Avg. Hourly Earnings (\$)		
	APR	MAR	APR	APR	MAR	APR	APR	MAR	APR
	2011	2011	2010	2011	2011	2010	2011	2011	2010
Alexandria	710.24	659.90	545.03	36.8	36.6	35.3	19.30	18.03	15.44
Baton Rouge	786.60	767.42	747.20	36.0	35.3	35.7	21.85	21.74	20.93
Houma	844.18	830.58	803.48	40.9	40.3	39.6	20.64	20.61	20.29
Lafayette	752.98	718.82	653.38	37.8	36.6	36.4	19.92	19.64	17.95
Lake Charles	845.21	802.72	773.17	39.7	39.1	38.2	21.29	20.53	20.24
Monroe	509.29	536.99	521.54	33.2	34.6	34.7	15.34	15.52	15.03
New Orleans	854.32	824.76	845.18	36.2	36.0	38.4	23.60	22.91	22.01
Shreveport	599.56	586.59	634.56	34.3	33.5	34.6	17.48	17.51	18.34

AVERAGE HOURS AND EARNINGS FOR PRODUCTION WORKERS IN MANUFACTURING AND SELECTED NONMANUFACTURING INDUSTRIES (Not Seasonally Adjusted)

	Avg. Weekly Earnings (\$)			Avg. Weekly Hours			Avg. Hourly Earnings (\$)		
	APR	MAR	APR	APR	MAR	APR	APR	MAR	APR
	2011	2011	2010	2011	2011	2010	2011	2011	2010
Louisiana									
Mining & Logging	1,049.01	964.41	1,015.01	43.8	40.1	43.6	23.95	24.05	23.28
Manufacturing	883.23	866.96	916.26	41.8	40.1	42.4	21.13	21.62	21.61
Durable Goods	898.88	914.61	865.28	42.4	43.0	41.5	21.20	21.27	20.85
Nondurable Goods	865.16	812.91	973.46	41.1	36.8	43.4	21.05	22.09	22.43
New Orleans MSA									
Ship and Boat Building	874.68	880.50	829.92	38.6	38.5	39.0	22.66	22.87	21.28

The 101,200 production workers in all manufacturing earned an average of \$883.23 per week in April 2011. Average weekly hours were 41.8, and average hourly earnings were \$21.13.

LOUISIANA UNEMPLOYMENT INSURANCE by CLAIMANT'S PARISH of RESIDENCE

WEEK ENDING - April 16, 2011

RLMA/PARISH	INITIAL CLAIMS	WEEKS CLAIMED	RLMA/PARISH	INITIAL CLAIMS	WEEKS CLAIMED	RLMA/PARISH	INITIAL CLAIMS	WEEKS CLAIMED
RLMA 1	920	10,458	RLMA 4	456	5,064	RLMA 7	443	4,850
JEFFERSON	390	4,166	ACADIA	26	321	BIENVILLE	7	164
ORLEANS	273	3,336	EVANGELINE	20	252	BOSSIER	61	757
PLAQUEMINES	15	194	IBERIA	69	616	CADDO	204	2,294
ST. BERNARD	0	2	LAFAYETTE	148	1,632	CLAIBORNE	11	122
ST. CHARLES	41	386	ST. LANDRY	63	813	DESOTO	19	194
ST. JAMES	36	333	ST. MARTIN	35	374	LINCOLN	46	424
ST. JOHN	47	601	ST. MARY	54	649	NATCHITOCHEs	31	297
ST. TAMMANY	118	1,440	VERMILION	41	407	RED RIVER	8	73
						SABINE	13	126
						WEBSTER	43	399
RLMA 2	902	9,294	RLMA 5	278	2,236	RLMA 8	272	3,395
ASCENSION	104	999	ALLEN	21	167	CALDWELL	12	108
E. BATON ROUGE	406	4,334	BEAUREGARD	43	325	EAST CARROLL	8	114
EAST FELICIANA	11	175	CALCASIEU	195	1,527	FRANKLIN	24	281
IBERVILLE	42	395	CAMERON	4	28	JACKSON	16	148
LIVINGSTON	115	1,111	JEFF. DAVIS	15	189	MADISON	11	124
POINTE COUPEE	12	231				MOREHOUSE	35	455
ST. HELENA	4	71	RLMA 6	258	2,796	OUACHITA	109	1,451
TANGIPAHOA	143	1,306	AVOYELLES	38	368	RICHLAND	21	278
WASHINGTON	38	333	CATAHOULA	0	128	TENSAS	3	80
W. BATON ROUGE	19	261	CONCORDIA	10	186	UNION	26	211
WEST FELICIANA	8	78	GRANT	15	155	WEST CARROLL	7	145
			LASALLE	7	81			
RLMA 3	151	1,713	RAPIDES	91	1,179			
ASSUMPTION	37	339	VERNON	79	588			
LAFOURCHE	56	618	WINN	18	111			
TERREBONNE	58	756						

RLMA = REGIONAL LABOR MARKET AREA

THE ABOVE FIGURES INCLUDE REGULAR UNEMPLOYMENT INSURANCE (UI), UNEMPLOYMENT CLAIMS for FEDERAL EMPLOYEES (UCFE), and UNEMPLOYMENT CLAIMS for EX-SERVICE MEMBERS (UCX) DATA ONLY.

Labor Market Questions and Answers!

- **Production of State estimates will transition from State Workforce Agencies to Bureau of Labor Statistics (BLS)**

With the production of preliminary estimates for March, 2011, responsibility for the production of State and metropolitan area (MSA) estimates will transition from individual State Workforce Agencies to the BLS. State agencies will continue to provide the BLS with information on local events that may impact the estimates, such as strikes or large layoffs at businesses not covered by the survey, and to disseminate and analyze the CES estimates for local data users. This change is designed to improve the cost efficiency of the CES program and to reduce the potential for statistical bias in state and area estimates. A portion of the cost savings generated by this change is slated to be directed towards raising survey response rates in future years, which will decrease the level of statistical error in the CES estimates.

- **Note that Shreveport MSA data for July 2010 through March 2011 have been updated on the Louisiana Workforce Commission's (LWC's) Web site www.laworks.net**

Web navigation: LWC home page, Labor Market Information, LOIS (Louisiana Occupational Information System), then use menu to left in green and scroll over Employment and Wage Data, Industry Data, and select Current Employment Statistics (CES).

- **New data for Interstate Claims back to 1-2-2010 are now available on the LWC Web site**

Web navigation: LWC home page, Labor Market Information, Unemployment Insurance (UI) Claims Data, and select UI Weekly Claims Data.

www.laworks.net/LaborMarketInfo/LMI_UIClaimsReportMenu.asp

Glossary & Technical Notes

Average Hourly Earnings/Average Weekly Earnings/ Average Weekly Hours (CES/BLS) - average total money earnings, in the survey week (i.e., the week that includes the twelfth of the month), of production workers plus nonsupervisory workers not in production, including overtime, paid vacation and sick leave.

Civilian Labor Force - that portion of the population, age sixteen or older, which is employed or unemployed and actively seeking employment during the reference week of the twelfth of the month.

Employed - the members of the labor force who worked for pay or profit, or had a job from which they were temporarily absent because of illness, vacation, labor dispute, or other reasons not reflecting a shortage of work, or who worked fifteen hours or more as unpaid workers in an enterprise operated by a member of the family.

Unemployed - the members of the labor force who did not work but were seeking work or were awaiting recall from layoffs or the beginning of a new job within thirty days.

Unemployment Rate - the number of unemployed persons expressed as a percentage of the labor force.

Continued Claim - each week claimed subsequent to the filing of the initial claim for a week of unemployment compensation.

Current Employment Statistics (CES) - estimates of nonfarm employment and production workers hours and earnings by industry. They are produced as part of a nationwide program, in cooperation with the Bureau of Labor Statistics (BLS), for the state and each metropolitan statistical area (MSA) from a sample of employing establishments.

Current Population Survey (CPS) - a monthly household survey of the U.S. population conducted for the Bureau of Labor Statistics (BLS) by the Bureau of Census, of 56,000 selected households. Respondents are interviewed to obtain information on the employment status of each household member age 16 and over, during the reference week of the twelfth.

Durable Goods - items with a normal life expectancy of three years or more. Automobiles, furniture, household appliances, and mobile homes are examples.

Initial Claims - a new claim, filed to open a claim for unemployment compensation.

Metropolitan Statistical Area (MSA) - a geographical area comprised of a parish generally containing a central city (or twin cities) of 50,000 inhabitants or more and contiguous parishes that are socially and economically integrated with the central city.

Micropolitan Statistical Area (MC) - a geographical area comprised of a parish containing a central city of at least 10,000 but less than 50,000 inhabitants and contiguous parishes that are socially and economically integrated with the central city.

NAICS (North American Industry Classification System) - an industry classification system that groups establishments into industries based on the activities in which they are primarily engaged.

Nonfarm Employment - employment by place of work that does not include the self employed, unpaid family workers, domestics, or agriculture workers. All estimates of nonfarm employment in this publication are in cooperation with the U.S. Department of Labor Bureau of Labor Statistics and include all full-time and part-time workers who were employed during the pay period including the twelfth of the month.

Nondurable Goods - items that generally last for only a short period of time (less than three years). Food, beverages, apparel, and gasoline are common examples.

Seasonally Adjusted - monthly data that is adjusted to minimize the changes in any time series which result from normal annual occurrences such as Christmas, summer vacations, and weather patterns.

Subsector - refers to the three-digit NAICS code, which will fall under the particular sector. Example: If Manufacturing (31-33) is the industry sector, then Food manufacturing (311), Paper manufacturing (322), Chemical manufacturing (325), Transportation equipment manufacturing (336), are some of the subsectors of manufacturing.

Supersector - refers to these five categories: Total Nonfarm, Total Private, Goods-Producing, Service-Providing, and Private Service-Providing.

Summary Industry Sector - a combination of industry sectors. A summary sector may or may not be published. The summary industry sectors are Mining & Logging; Construction; Manufacturing; Trade, Transportation, & Utilities; Information; Financial Activities; Professional & Business Services; Education & Health Services; Leisure & Hospitality; Other Services; and Government.

Industry Sector - 20 industry sectors based on two-digit NAICS code. They are Agriculture, Forestry, Fishing and Hunting (11), Mining (21), Utilities (22), Construction (23), Manufacturing (31-33), Wholesale Trade (42), Retail Trade (44-45), Transportation and Warehousing (48-49), Information (51), Finance and Insurance (52), Real Estate and Rental and Leasing (53), Professional and Technical Services (54), Management of Companies and Enterprises (55), Administrative and Waste Services (56), Educational Services (61), Health Care and Social Assistance (62), Arts, Entertainment, and Recreation (71), Accommodation and Food Services (72), Other Services (81), and Public Administration (92).

Constraints of the monthly civilian labor force and nonfarm employment estimates:

The civilian labor force estimates are derived by a monthly survey of approximately 750 households throughout Louisiana following the Bureau of Labor Statistics (BLS) methodology. The US Census Bureau conducts the survey by calling randomly selected households and providing BLS with survey results. Households are asked for the number of residents who are sixteen and over and whether they were working or actively looking for work during the week of the twelfth of the month. Responses to these questions become part of the formula to determine the number of people employed and the number of individuals unemployed for the state, MSAs, and each parish every month.

The nonfarm employment estimates are derived from responses received from the monthly BLS survey of 2,757 businesses across the state surveyed directly by this agency, and an additional 2,500 businesses that respond directly to BLS with their employment data. Responses capture employment activity during the twelfth of each month. This survey relies on responses from these businesses to produce industry employment levels for the state and all metropolitan statistical areas.

Both data sets are comparable with estimates for the U.S., all 50 states, and 270 metropolitan areas across the U.S.

LABOR MARKET INFORMATION WEB LINKS

Civilian Labor Force - LAUS (Local Area Unemployment Statistics) –

Employment, Unemployment and Unemployment Insurance Rate

LA <http://www.voshost.com/altentry.asp?action=lmiguest>

Left menu: Historical Data Analysis – Employment and Wage Data – Labor Force Data – Labor Force Employment and Unemployment (LAUS)

States <http://data.bls.gov/cgi-bin/dsrv?la>

US <http://data.bls.gov/pdq/querytool.jsp?survey=ln>

Consumer Price Index (US) <http://data.bls.gov/cgi-bin/surveymost?cu>

Download Louisiana Workforce Commission’s Labor Market Information Products

LA http://www.laworks.net/Downloads/Downloads_LMI.asp

Employment and Wage Data – Quarterly Census of Employment and Wages (QCEW)

LA <http://www.voshost.com/altentry.asp?action=lmiguest>

Left menu: Historical Data Analysis – Employment and Wage Data – Industry Data – Quarterly Census of Employment and Wages (QCEW)

States & US <http://data.bls.gov/cgi-bin/dsrv?en>

NAICS (North American Industry Classification System) Codes Look-Up Table

<http://www.census.gov/eos/www/naics>

Nonfarm Employment, Hours and Earnings - CES (Current Employment Statistics)

LA <http://www.voshost.com/altentry.asp?action=lmiguest>

Left menu: Historical Data Analysis – Employment and Wage Data – Industry Data – Current Employment Statistics (CES) – select Show Earnings Data under table

States <http://data.bls.gov/cgi-bin/dsrv?sm>

US <http://data.bls.gov/cgi-bin/dsrv?ce>

Unemployment Insurance Claimants Data (by Occupation) - Unemployment Insurance (UI)

LA <http://www.voshost.com/altentry.asp?action=lmiguest>

Left menu: Historical Data Analysis – Employment and Wage Data – Labor Force Data – Unemployment Insurance Claimants

Unemployment Insurance Claims Data (by Region, Parish, Industry) - UI

LA http://www.laworks.net/LaborMarketInfo/LMI_UIClaimsReportMenu.asp

States & US <http://ows.doleta.gov/unemploy/claims.asp>

Unemployment Rates for all States - LAUS

States <http://www.bls.gov/web/laumstrk.htm>



Office of Occupational Information Services
Research & Statistics Division
Post Office Box 94094
Baton Rouge, LA 70804-9094

Data for: 4/2011



Workforce At A Glance is published monthly by the Louisiana Workforce Commission (LWC). The material in this publication is not copyrighted and may be reproduced; however, the LWC would appreciate credit for the material used and a copy of the reprint.

LMI Staff:

Patty Granier, Manager
Ramona Robichaux, Supervisor
Karen Clark, Layout and Design
Benjamin Caldwell, Jonathan Helis, Tequila Perkins and Ronald Smith

Contributors:

Florence Gibson-Williams, Eula Sanders,
Natalie Foster-Lawrence, Mark Jones, Helen Hillard,
Tara Robinson, and Karen Clark

Contact Us:

Phone (225) 342-3141; Fax (225) 219-7759
Toll Free (888) 302-7662;
Email OOIS@ldol.state.la.us

Bobby Jindal, Governor
State of Louisiana

Curt Eysink, Executive Director
Louisiana Workforce Commission

Raj Jindal,
Information Technology Director

Visit our Web site:
www.laworks.net