

2004 –2014 Projected Occupations in Demand

Occupational Title	Minimum Education Requirements	** Total Annual Demand	1 st Quarter 2006 Average Hourly Wage
Choreographers	Work Exp. in a related occ.	30	\$10.35
Ushers, Lobby Attendants, and Ticket Takers	Short-term Tng. & Exp.	100	\$6.72
Printing Machine Operators	Mod.-term Tng. & Exp.	40	\$11.50
Actors	Long-term Tng. & Exp.	140	\$9.39
Telecommunications Line Installers and Repairers	Long-term Tng. & Exp.	60	15.36
Musicians and Singers	Long-term Tng. & Exp.	50	12.35
Photographers	Long-term Tng. & Exp.	50	11.56
Audio and Video Equipment Technicians	Long-term Tng. & Exp.	20	13.23
Graphic Designers	Bachelor's degree	20	\$14.60
Editors	Bachelor's degree	20	19.64

**Total Annual Demand = Demand in the occupation as a function of replacement demand (retirements + turnover) + new growth.

Occupations in the Spotlight

Telecommunications Line Installers and Repairers



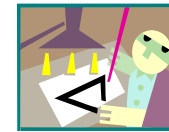
String and repair telephone and television cable, including fiber optics and other equipment, for transmitting messages or television programming.

- ◆ Knowledge of transmission, broadcasting, switching, control, and operation of telecommunications systems
- ◆ Knowledge of circuit boards, processors, chips, electronic equipment, and computer hardware and software, including

Required WorkKeys® Scores:

AM LI RI
4 5 4

Graphic Designers



Create designs, concepts, and sample layouts based on knowledge of layout principles and esthetic design concepts through the use of rough sketches, illustrations and

- ◆ Knowledge of design theory, techniques, tools, and principles involved in production of visual media and arts
- ◆ Use computer software to generate new images
- ◆ Knowledge of media production, communication, and dissemination techniques and methods

Required WorkKeys® Scores:

AM LI RI
5 4 5

AM = Applied Mathematics

LI = Locating Information

RI = Reading for Information

WorkKeys® assessments give students and workers reliable, relevant information about workplace skill levels. Combined with information about skill levels required for jobs, assessments information can help students make better career and educational decisions. Louisiana uses three WorkKeys® assessments as the foundation for awarding career readiness certificates. For more information, contact the Workforce Education and Training Office at the Louisiana Board of Regents (225-342-4253).

LOUISIANA Opportunities in



This cluster offers two different avenues of concentration. Careers in the performing arts, or certain aspects of journalism, broadcasting and film require courses and activities that challenge students' creative talents. Careers in audio-video communications technology, telecommunications, or printing technology require strong backgrounds in computer and electronic-based technology and a solid foundation in math and science.

FASTEST GROWING JOBS

- 👤 Actors
- 👤 Ushers, Lobby Attendants, and Ticket Takers
- 👤 Telecommunications Line Installers and Repairers
- 👤 Musicians and Singers
- 👤 Photographers

**Louisiana Department of Labor
Office of Occupational Information Services
P.O. Box 94094
Baton Rouge, LA 70804-9094
Phone (225) 342-3141
TDD Toll Free (866) 277-9317
FAX (225) 342-9192**

"This document was produced as a collaborative endeavor between the Louisiana Departments of Labor, Education and the Board of Regents".

*An Equal Opportunity Employer
Auxiliary Aids and Services are available upon request to
individuals with disabilities*

The total cost of printing this document, including reprints, is \$.09 per copy. This document was published by the Louisiana Department of Labor, Office of Occupational Information Services, Research & Statistics Division, P. O. Box 94094, Baton Rouge, Louisiana 70804-9094. Its purpose is to disseminate information pertaining to labor market developments and employment trends under the authority of Part 602.6, Title 20, Chapter V of the Code of Federal Regulations. It was printed in accordance with the standards for printing by state agencies established pursuant to R.S. 43:31.

Reference Center:

Louisiana Department of Labor -
<http://www.LAWORKS.net>

Occupational Information – go to Career Exploration
<https://www.voshost.com/default.asp>

Louisiana Employment Outlook -
http://www.laworks.net/LaborMarketInfo/LMI_employmentprojections.asp

Louisiana Technical Colleges -
<http://www.ltc.edu/home.asp>

Financial Aid-
<http://www.osfa.state.la.us/>

Louisiana Board of Regents-
<http://www.regents.state.la.us>

Louisiana Community & Technical College System
<http://www.lctcs.net/>

ACT
<http://www.act.org>

National Career Clusters
<http://www.careerclusters.org>



This brochure is designed to provide assistance to students as they prepare to make decisions about course selection, their career options and future plans.

The Career Options Law (Act 1124) mandates that all high school students have a five-year educational plan and that all high schools offer career majors/areas of concentrations. It is the intent of the law that students have a focus while in school to help make learning more relevant and meaningful.

Students in 6th – 8th grades must complete at least six career awareness activities which help students to develop a five-year educational plan. It also requires school systems to offer areas of concentrations to address students' interests.

The Five-Year Educational Plan Students must complete this plan at the end of their 8th grade year with input from their counselor and/or advisor and family. This plan must be reviewed and revised on an annual basis throughout high school with student, parent and counselor/advisor signatures each year.

Arts, A/V Technology and Communications Cluster High School Areas of Concentrations (2007 – 2008)

Diploma Endorsements will help provide for students the preparation necessary for college and/or a career. By the same token employers will be getting better prepared workers, and higher education institutions will have students better prepared for success in their post secondary institutions. These endorsements help students to maximize their 11th and 12th grades, encourage more students to take Advanced Placement courses, encourage students to take advantage of career and technical education courses and opportunities, as well as hold high schools accountable for what is taught during the 11th and 12th grades. Students can complete the necessary requirements for two different diploma endorsements:

- Academic Endorsement
 - Career and Technical Endorsement
- Please see your guidance counselor for further details.

The Louisiana WORKReady! Certificate is a portable credential that signifies to an employer that an individual has achieved acceptable levels in the foundation skills necessary for success in the workplace and gives Louisiana citizens a “key to work”. Issued by the Workforce Commission, the Certificate is a tool that helps employers identify qualified candidates to fill the openings they have in their businesses.

People who attain the Certificate, which will display their workplace readiness skill levels, will have an advantage as they pursue their career goals. The Certificate increases the likelihood that business will receive a well-trained, highly skilled worker and that education will prepare students for available jobs. For more information, contact the Workforce Commission at 225-342-2094 or the Board of Regents at 225-342-4253.

Career Cluster

Arts, A/V Technology & Communications

Areas of Concentrations

Commercial Arts
Graphic Arts
Interiors and Furnishings
Journalism
Liberal Arts
Mass Communications
Performing Arts
Photography
Printing Technology
Entertainment Production

Post Secondary Programs

Two-year postsecondary education
Apprenticeship
Four-year postsecondary education
Mass Communications
Printing Technology
Speech
Performing Arts
Music
Dance
Journalism
Interior Design

Training Programs Related

Certification(s):

PrintED
CIW

For more information on course selection visit our Web site:

<http://www.doe.state.la.us/ide/ssa/currichome.html>

TOP EMPLOYING INDUSTRIES

Industry

(based on North American

Industry Classification System NAICS)

Number
of New
Jobs

Percent
Change

Industry	2004	2014	Number of New Jobs	Percent Change
Performing arts and spectator sports	4,568	5,241	673	14.7%
Museums, historical sites, zoos, and parks	1,803	1,635	-168	-9.3%
Amusements, gambling, and recreation	31,070	29,414	-1,656	-5.3%